

Livestock Slaughter

Released August 22, 2008, by the National Agricultural Statistics Service (NASS), Agricultural Statistics Board, U.S. Department of Agriculture. For information on *Livestock Slaughter* call Benita Hodge at (515) 284-4340, office hours 7:00 a.m. to 4:00 p.m. CT.

July Pork and Total Red Meat Production Above Previous Year

Commercial red meat production for the United States totaled 4.25 billion pounds in July, up 8 percent from the 3.94 billion pounds produced in July 2007.

Beef production, at 2.37 billion pounds, was 5 percent above the previous year. Cattle slaughter totaled 3.06 million head, up 6 percent from July 2007. The average live weight was up 4 pounds from the previous year, at 1,273 pounds.

Veal production totaled 12.3 million pounds, 16 percent above July a year ago. Calf slaughter totaled 87,900 head, up 41 percent from July 2007. The average live weight was down 46 pounds from last year, at 243 pounds.

Pork production totaled 1.85 billion pounds, up 12 percent from the previous year. Hog kill totaled 9.47 million head, up 13 percent from July 2007. The average live weight was down 2 pounds from the previous year, at 262 pounds.

Lamb and mutton production, at 13.7 million pounds, was up 1 percent from July 2007. Sheep slaughter totaled 207,800 head, 1 percent above last year. The average live weight was 132 pounds, up 1 pound from July a year ago.

January to July 2008 commercial red meat production was 29.3 billion pounds, up 6 percent from 2007. Accumulated beef production was up 3 percent from last year, veal was down 6 percent, pork was up 11 percent from last year, and lamb and mutton production was down 4 percent.

July 2007 contained 22 weekdays (including one holiday) and 4 Saturdays.

July 2008 contained 23 weekdays (including one holiday) and 4 Saturdays.

Contents

	Page
Red Meat Production, Commercial and FI, by Type, U.S.	1
Livestock Slaughter, Number and Average Weights, by Species and Type of Slaughter, U.S.	2
Commercial Red Meat Production, by State and U.S.	3
Commercial Cattle Slaughter, Number, Total and Average Live Weight, by State and U.S.	4
Commercial Calf Slaughter, Number, Total and Average Live Weight, by State and U.S.	5
Commercial Hog Slaughter, Number, Total and Average Live Weight, by State and U.S.	6
Commercial Sheep and Lamb Slaughter, Number, Total and Average Live Weight, by State and U.S.	7
Federally Inspected Classification of Number and Average Dressed Weight, by Species and Class and U.S.	8
Federally Inspected Slaughter by Species and Class, by Region and U.S.	9
Federally Inspected Percent of Total Commercial, by Species, U.S.	11
Reliability Statement.....	18
Types of Plants.....	19
Terms and Definitions	20
Information Contacts	20

Commercial Red Meat Production: United States ¹

Type	Jul 2007	Jun 2008	Jul 2008	Jul 08 % of		Jan - Jul ²		
				Jul 2007	Jun 2008	2007	2008	08 as % of 07
	<i>Million Pounds</i>	<i>Million Pounds</i>	<i>Million Pounds</i>	<i>Percent</i>	<i>Percent</i>	<i>Million Pounds</i>	<i>Million Pounds</i>	<i>Percent</i>
Beef	2,256.7	*2,262.7	2,372.7	105	105	15,142.1	15,641.3	103
Veal	10.7	11.7	12.3	116	105	86.0	81.0	94
Pork	1,659.5	1,762.1	1,852.9	112	105	12,183.6	13,469.3	111
Lamb & Mutton	13.5	13.1	13.7	101	104	106.9	103.0	96
Total Red Meat ³	3,940.4	4,049.6	4,251.6	108	105	27,518.6	29,294.6	106

* Revised.

¹ Based on packers' dressed weights and excludes farm slaughter.

² Accumulated totals and percentages based on unrounded data.

³ Totals may not equal sum of the parts due to rounding.

Federally Inspected Red Meat Production: United States ¹

Type	Jul 2007	Jun 2008	Jul 2008	Jul 08 % of		Jan - Jul ²		
				Jul 2007	Jun 2008	2007	2008	08 as % of 07
	<i>Million Pounds</i>	<i>Million Pounds</i>	<i>Million Pounds</i>	<i>Percent</i>	<i>Percent</i>	<i>Million Pounds</i>	<i>Million Pounds</i>	<i>Percent</i>
Beef	2,228.6	2,234.2	2,341.9	105	105	14,940.2	15,432.3	103
Veal	10.5	11.5	12.1	115	105	84.4	79.3	94
Pork	1,644.9	1,747.9	1,837.4	112	105	12,087.4	13,367.5	111
Lamb & Mutton	12.8	12.5	13.0	102	103	102.5	98.6	96
Total Red Meat ³	3,896.8	*4,006.1	4,204.3	108	105	27,214.4	28,977.7	106

* Revised.

¹ Based on packers' dressed weights and excludes farm slaughter.

² Accumulated totals and percentages based on unrounded data.

³ Totals may not equal sum of the parts due to rounding.

Livestock Slaughter: Number and Average Weights, United States ¹

Species	Unit	Jul 2007	Jun 2008	Jul 2008	Jul 08 % of		Jan - Jul ²		
					Jul 2007	Jun 2008	2007	2008	08 % of 07
					<i>Percent</i>	<i>Percent</i>			<i>Prent</i>
Cattle No.									
Fed. Insp.	Thou	2,859.9	2,911.6	3,017.0	105	104	19,575.9	20,066.3	103
Other	Thou	43.2	43.9	47.0	109	107	310.8	322.1	104
Comm'l. ³	Thou	2,903.1	2,955.5	3,064.0	106	104	19,886.8	20,388.4	103
Live Wt/Hd									
Fed. Insp.	Lbs	1,271	1,263	1,275	100	101	1,260	1,273	101
Other	Lbs	1,137	1,136	1,148	101	101	1,143	1,145	100
Comm'l.	Lbs	1,269	1,261	1,273	100	101	1,258	1,271	101
Calves No.									
Fed. Insp.	Thou	61.7	74.2	86.7	141	117	444.3	511.4	115
Other	Thou	0.8	1.2	1.2	147	102	7.0	7.9	112
Comm'l. ³	Thou	62.5	75.4	87.9	141	117	451.4	519.2	115
Live Wt/Hd									
Fed. Insp.	Lbs	288	265	241	84	91	319	265	83
Other	Lbs	384	377	415	108	110	397	401	101
Comm'l.	Lbs	289	266	243	84	91	320	267	84
Hogs No.									
Fed. Insp.	Thou	8,311.8	8,800.5	9,373.1	113	107	60,039.0	66,415.3	111
Other	Thou	87.2	84.3	92.2	106	109	569.6	589.1	103
Comm'l. ³	Thou	8,399.0	*8,884.8	9,465.2	113	107	60,608.5	67,004.4	111
Live Wt/Hd									
Fed. Insp.	Lbs	265	266	263	99	99	269	269	100
Other	Lbs	233	233	234	100	100	234	239	102
Comm'l.	Lbs	264	266	262	99	99	269	269	100
Sheep&Lambs No.									
Fed. Insp.	Thou	191.2	180.7	193.1	101	107	1,452.9	1,398.5	96
Other	Thou	14.8	11.7	14.7	99	126	87.9	85.7	97
Comm'l. ³	Thou	206.0	192.4	207.8	101	108	1,540.8	1,484.2	96
Live Wt/Hd									
Fed. Insp.	Lbs	133	139	134	101	97	141	141	100
Other	Lbs	106	107	105	100	98	102	105	103
Comm'l.	Lbs	131	137	132	101	96	139	139	101
Goats No.									
Fed. Insp.	Thou	52.9	53.5	56.7	107	106	351.0	367.8	105
Other	Thou	15.5	16.2	15.6	101	96	106.1	107.0	101
Comm'l. ³	Thou	68.4	69.8	72.3	106	104	457.2	474.8	104
Live Wt/Hd									
Fed. Insp.	Lbs	61	61	62	101	100	61	62	101
Other	Lbs	52	58	51	98	88	59	62	105
Comm'l.	Lbs	59	61	59	101	98	61	62	102
Bison No.									
Fed. Insp.	Thou	4.4	4.8	5.1	116	107	29.5	34.0	115
Other	Thou	1.2	1.3	1.1	98	88	10.3	9.4	91
Comm'l. ³	Thou	5.6	6.1	6.3	112	103	39.8	43.4	109

* Revised.

¹ Excludes slaughter on farms.

² Accumulated totals and percentages based on unrounded data.

³ Totals may not equal sum of the parts due to rounding.

Commercial Red Meat Production: By State and United States ¹

State	Jul 2007	Jun 2008	Jul 2008	Jul 08 as % of ²	
				Jul 2007	Jun 2008
	<i>Million Pounds</i>	<i>Million Pounds</i>	<i>Million Pounds</i>	<i>Percent</i>	<i>Percent</i>
AL	2.2	2.1	2.2	100	103
AK			0.1		
AZ	36.2	34.0	34.9	96	103
AR	4.5	5.8	5.7	127	97
CA	133.4	135.6	133.5	100	98
CO	161.6	196.1	198.3	123	101
DE-MD	3.0	2.9	2.9	97	98
FL	6.7	8.2	9.7	146	118
GA	12.9	12.5	13.4	104	108
HI	0.8	0.9	1.0	121	112
ID	16.0	20.3	20.3	127	100
IL	222.7	238.3	242.2	109	102
IN	121.3	126.2	137.8	114	109
IA	490.0	527.3	568.1	116	108
KS	546.4	436.2	474.6	87	109
KY	45.4	42.2	45.6	100	108
LA	0.5	0.5	0.5	102	101
MI	42.2	44.5	44.4	105	100
MN	187.5	205.5	215.6	115	105
MS	1.0	1.2	1.3	131	104
MO	119.4	126.0	135.5	113	108
MT	1.2	0.9	1.8	148	193
NE	617.1	620.5	650.7	105	105
NV	0.1	0.1	0.1	164	148
N ENG ³	1.0	1.1	1.2	117	111
NJ	4.2	3.5	3.8	89	109
NM	0.4	0.4	0.4	108	102
NY	2.7	3.0	3.3	123	108
NC	178.6	186.1	195.7	110	105
ND	2.4	2.0	2.3	94	111
OH	23.4	26.2	27.4	117	105
OK	78.1	88.1	89.0	114	101
OR	4.7	4.8	4.9	105	104
PA	104.1	105.2	112.6	108	107
SC	20.0	20.1	20.4	102	102
SD	76.3	80.3	77.8	102	97
TN	16.3	15.9	16.2	99	102
TX	390.9	457.5	474.9	121	104
UT	38.9	44.4	48.0	123	108
VA	35.3	36.7	36.7	104	100
WA	76.2	64.9	71.3	94	110
WV	0.5	0.3	0.4	94	150
WI	113.9	120.7	124.7	110	103
WY	0.5	0.5	0.6	117	118
US	3,940.4	4,049.6	4,251.6	108	105

¹ Includes total beef, veal, pork, lamb, and mutton.

² Percentages based on unrounded data.

³ N ENG includes CT, ME, MA, NH, RI, and VT.

**Commercial Cattle Slaughter: By State and United States,
July 2007 and 2008 ¹**

State	Number Slaughtered		Total Live Weight		Average Live Weight	
	2007	2008	2007	2008	2007	2008
	<i>1,000 Head</i>	<i>1,000 Head</i>	<i>1,000 Pounds</i>	<i>1,000 Pounds</i>	<i>Pounds</i>	<i>Pounds</i>
AL	0.4	0.4	376	374	1,002	908
AK		0.1		98		1,037
AZ	44.4	45.2	61,039	61,681	1,376	1,370
AR	0.9	0.7	900	718	1,008	1,044
CA	130.2	127.5	165,029	159,400	1,288	1,269
CO	190.4	232.5	245,680	304,328	1,291	1,310
DE-MD	3.3	3.2	4,283	4,061	1,307	1,288
FL						
GA	24.7		21,687		880	
HI	0.9	1.1	939	1,219	1,023	1,140
ID	21.6	27.4	25,036	33,526	1,171	1,238
IL						
IN	3.1	3.7	3,309	3,934	1,054	1,061
IA						
KS	671.5	572.2	847,035	734,022	1,262	1,283
KY	1.1	1.3	1,088	1,200	980	960
LA	0.6	0.5	462	393	739	770
MI	49.1	51.8	66,175	69,105	1,355	1,342
MN	56.5	75.5	76,465	103,647	1,363	1,380
MS	0.1	0.1	68	88	832	835
MO	7.2	7.3	8,809	8,775	1,226	1,204
MT	1.4	2.1	1,646	2,488	1,220	1,192
NE	624.7	646.6	807,489	841,080	1,294	1,302
NV	0.1	0.2	96	188	1,009	1,124
N ENG ²	0.9	1.2	1,061	1,292	1,119	1,096
NJ	2.4	2.5	2,925	2,775	1,214	1,109
NM	0.8	0.4	629	460	877	1,082
NY	2.1	2.4	2,388	2,780	1,164	1,191
NC	17.3	21.2	20,169	24,271	1,169	1,151
ND	0.9	0.9	1,115	1,138	1,198	1,230
OH	9.2	10.6	10,838	12,504	1,184	1,184
OK	1.6	2.2	1,722	2,367	1,068	1,084
OR	2.6	3.4	3,003	4,044	1,182	1,214
PA	79.9	86.7	98,715	106,528	1,243	1,240
SC	12.4	13.8	13,867	14,968	1,123	1,088
SD						
TN	2.0	2.6	1,667	2,153	873	849
TX	501.1	620.5	617,462	757,636	1,236	1,224
UT	48.8	59.4	61,981	76,203	1,272	1,287
VA	1.0	0.8	1,084	829	1,077	1,033
WA	94.3	90.1	122,900	114,772	1,310	1,280
WV	0.5	0.4	585	488	1,188	1,238
WI	133.9	145.0	176,964	192,346	1,336	1,341
WY	0.6	0.7	680	796	1,121	1,210
US ³	2,903.1	3,064.0	3,673,852	3,888,150	1,269	1,273

¹ Includes slaughter under Federal inspection and other Commercial slaughter, excludes farm slaughter.

² N ENG includes CT, ME, MA, NH, RI, and VT.

³ States with no data printed are still included in the US total, data not printed to avoid disclosing individual operations. Accumulated totals and percentages based on unrounded data.

**Commercial Calf Slaughter: By State and United States,
July 2007 and 2008¹**

State	Number Slaughtered		Total Live Weight		Average Live Weight	
	2007	2008	2007	2008	2007	2008
	<i>1,000 Head</i>	<i>1,000 Head</i>	<i>1,000 Pounds</i>	<i>1,000 Pounds</i>	<i>Pounds</i>	<i>Pounds</i>
AL						
AK						
AZ						
AR						
CA	12.2	19.3	1,502	2,295	124	120
CO						
DE-MD	0.2	0.2	52	62	265	271
FL		0.1		45		404
GA	0.1	0.1	32	50	397	445
HI						
ID						
IL	2.7	6.0	1,098	1,438	408	244
IN						
IA						
KS						
KY	0.1		40		534	
LA	0.1	0.4	65	228	469	524
MI	1.8	1.5	755	619	421	423
MN						
MS						
MO		0.1		23		395
MT						
NE						
NV						
N ENG ²	0.1	0.2	35	50	266	255
NJ	6.5	5.0	2,754	2,064	427	413
NM		1.9		168		89
NY	13.1	23.2	1,491	2,303	118	103
NC	0.1	0.2	65	73	494	488
ND						
OH		4.8		2,147		448
OK						
OR						
PA	14.1	12.4	5,254	4,557	375	367
SC						
SD						
TN	0.1	0.1	27	44	424	436
TX	0.6	0.7	339	403	602	552
UT						
VA	0.1		20		327	
WA						
WV						
WI						
WY						
US ³	62.5	87.9	17,883	21,052	289	243

¹ Includes slaughter under Federal inspection and other Commercial slaughter, excludes farm slaughter.

² N ENG includes CT, ME, MA, NH, RI, and VT.

³ States with no data printed are still included in the US total, data not printed to avoid disclosing individual operations. Accumulated totals and percentages based on unrounded data.

**Commercial Hog Slaughter: By State and United States,
July 2007 and 2008 ¹**

State	Number Slaughtered		Total Live Weight		Average Live Weight	
	2007	2008	2007	2008	2007	2008
	<i>1,000 Head</i>	<i>1,000 Head</i>	<i>1,000 Pounds</i>	<i>1,000 Pounds</i>	<i>Pounds</i>	<i>Pounds</i>
AL	7.8	8.3	3,555	3,685	455	444
AK						
AZ	0.1	0.2	23	28	196	181
AR	13.1	17.3	6,002	8,000	457	463
CA	206.4	225.7	48,295	52,615	234	233
CO	0.9	0.9	233	215	247	249
DE-MD	1.5	1.4	333	323	217	225
FL	6.8	9.2	1,024	987	152	107
GA	11.4	9.8	2,532	2,255	221	229
HI	1.8	1.7	388	384	211	225
ID	13.1	12.9	3,214	3,158	247	245
IL	765.8	842.0	210,811	228,499	276	272
IN	616.5	698.2	157,899	178,511	256	256
IA	2,241.6	2,690.9	594,127	702,334	265	261
KS	18.2		8,144		450	
KY	226.3		59,253		262	
LA	1.0	1.0	187	166	193	172
MI	11.2	11.5	3,863	4,141	347	361
MN	749.1	818.5	192,942	210,889	258	258
MS		6.0		1,742		288
MO	562.2	650.9	150,983	172,847	269	266
MT	1.4	1.8	343	424	237	235
NE	566.4	649.5	149,066	169,630	263	262
NV						
N ENG ²	1.6	2.1	317	407	198	193
NJ	8.9	9.3	911	884	103	95
NM		0.1		16		243
NY	3.1	3.1	500	552	160	178
NC	873.8	979.5	222,533	243,738	255	249
ND	10.9	9.1	2,669	2,429	244	269
OH	89.8	98.0	23,926	26,430	267	270
OK	386.4	428.3	102,119	116,071	264	271
OR	17.3	15.0	3,953	3,660	230	245
PA	225.8	254.4	56,480	63,688	250	251
SC						
SD	364.1	358.0	91,526	90,227	252	252
TN	48.1	46.6	22,866	22,322	476	481
TX	33.8	36.2	8,066	8,245	239	228
UT	5.5	6.3	1,034	1,176	188	188
VA	179.3	184.3	45,990	47,688	257	259
WA	2.1	2.7	428	498	202	183
WV	0.8	0.7	208	195	254	262
WI	49.7	59.3	21,743	26,336	444	451
WY	0.4	0.4	99	114	262	262
US ³	8,399.0	9,465.2	2,217,224	2,480,080	264	262

¹ Includes slaughter under Federal inspection and other Commercial slaughter, excludes farm slaughter.

² N ENG includes CT, ME, MA, NH, RI, and VT.

³ States with no data printed are still included in the US total, data not printed to avoid disclosing individual operations. Accumulated totals and percentages based on unrounded data.

**Commercial Sheep and Lamb Slaughter: By State and United States,
July 2007 and 2008¹**

State	Number Slaughtered		Total Live Weight		Average Live Weight	
	2007	2008	2007	2008	2007	2008
	<i>1,000 Head</i>	<i>1,000 Head</i>	<i>1,000 Pounds</i>	<i>1,000 Pounds</i>	<i>Pounds</i>	<i>Pounds</i>
AL						
AK						
AZ						
AR						
CA						
CO	71.5	68.3	10,480	10,470	147	153
DE-MD	2.8	3.7	288	347	101	95
FL	0.2	0.3	15	19	64	55
GA	0.6	0.3	78	27	130	80
HI						
ID	1.1	0.7	126	88	114	118
IL						
IN	2.2	2.6	240	283	107	107
IA	31.8	29.7	4,572	4,168	144	140
KS	0.2	0.3	27	35	114	100
KY	1.2	1.2	153	143	130	117
LA	0.2	0.4	21	23	91	65
MI	16.1	17.2	2,011	2,089	126	122
MN	0.2	1.4	33	169	134	122
MS						
MO	0.5	0.7	58	74	110	108
MT	0.2	0.4	30	51	136	126
NE		0.1		15		129
NV	0.2	0.2	21	18	112	117
N ENG ²	2.4	2.1	252	210	104	99
NJ	9.8	12.0	814	1,014	83	84
NM	1.0	1.2	132	133	133	134
NY	3.0	2.6	260	236	88	90
NC	0.6	0.8	44	61	76	77
ND		0.1		7		102
OH	1.4	1.4	152	144	106	103
OK		0.1		10		92
OR	2.2	2.2	299	293	135	132
PA	4.4	4.5	438	442	99	98
SC						
SD	0.8	0.3	96	39	117	121
TN	1.1	1.2	86	95	78	76
TX	2.9	3.1	207	249	71	81
UT	2.4	2.8	332	380	137	136
VA	1.1	1.1	108	110	102	97
WA	0.8	0.5	98	86	129	159
WV	0.1	0.4	8	55	143	134
WI	1.6	1.5	216	213	135	138
WY	0.2	0.2	23	27	151	149
US ³	206.0	207.8	26,985	27,411	131	132

¹ Includes slaughter under Federal inspection and other Commercial slaughter, excludes farm slaughter.

² N ENG includes CT, ME, MA, NH, RI, and VT.

³ States with no data printed are still included in the US total, data not printed to avoid disclosing individual operations. Accumulated totals and percentages based on unrounded data.

**Classification of Livestock Slaughtered Under Federal Inspection:
United States**

Item	Jul 2007	Jun 2008	Jul 2008	Jan - Jul ¹		Jul 2007	Jun 2008	Jul 2008	Jan - Jul ¹	
	<i>1,000 Head</i>	<i>1,000 Head</i>	<i>1,000 Head</i>	<i>1,000 Head</i>	<i>1,000 Head</i>	<i>Percent of Total</i>	<i>Percent of Total</i>	<i>Percent of Total</i>	<i>Percent of Total</i>	<i>Percent of Total</i>
Class ²										
Cattle										
Steers	1,556	1,553	1,580	10,179	10,273	54.4	53.3	52.4	52.0	51.2
Heifers	842	820	861	5,858	5,947	29.4	28.2	28.5	29.9	29.6
All Cows	416	485	520	3,227	3,499	14.6	16.7	17.2	16.5	17.4
Dairy Cows	180	181	209	1,419	1,468	6.3	6.2	6.9	7.2	7.3
Other Cows	236	304	311	1,808	2,031	8.3	10.5	10.3	9.2	10.1
Bulls	45	53	57	312	347	1.6	1.8	1.9	1.6	1.7
Total ¹	2,860	2,912	3,017	19,576	20,066	100.0	100.0	100.0	100.0	100.0
Calves & Vealers	62	74	87	444	511	100.0	100.0	100.0	100.0	100.0
Hogs										
Barrow & Gilts	8,008	8,458	9,025	57,864	64,049	96.3	96.1	96.3	96.4	96.4
Sows	266	305	305	1,894	2,088	3.2	3.5	3.3	3.2	3.1
Boars	38	37	43	281	278	0.5	0.4	0.5	0.5	0.4
Total ¹	8,312	8,800	9,373	60,039	66,415	100.0	100.0	100.0	100.0	100.0
Sheep										
Mature Sheep	9	11	11	65	70	4.9	5.9	5.5	4.5	5.0
Lambs & Yrlngs	182	170	183	1,388	1,328	95.1	94.1	94.5	95.5	95.0
Total ¹	191	181	193	1,453	1,399	100.0	100.0	100.0	100.0	100.0
Average Dressed Weight										
	<i>Pounds</i>	<i>Pounds</i>	<i>Pounds</i>	<i>Pounds</i>	<i>Pounds</i>					
Cattle	782	770	779	766	772					
Steers ³	836	826	840	815	826					
Heifers ³	757	751	764	749	760					
All Cows ³	613	603	600	624	616					
Bulls ³	900	905	897	909	894					
Calves & Vealers	172	157	141	191	157					
Hogs										
Barrow Gilts ⁴	194	195	192	198	198					
Sows ⁴	309	310	308	309	308					
Boars ⁴	218	208	205	214	210					
Sheep										
Mature Sheep ⁵	67	70	67	71	71					
Lamb & Yrlngs ⁵	67	68	66	67	67					
Lamb & Yrlngs ⁵	67	70	67	71	71					

¹ Total and percentages based on unrounded data.

² Species totals and classification reported by food inspectors, Inspection Operations, FSIS.

³ Included in cattle average dressed weight.

⁴ Included in hog average dressed weight.

⁵ Included in sheep average dressed weight.

**Federally Inspected Slaughter: By Region and United States,
July 2008¹**

Standard Federal Regions	Cattle							Calves
	Total ²	Steers	Heifers	Cows			Bulls	Total
				All	Dairy	Other		
	<i>1,000 Head</i>	<i>1,000 Head</i>	<i>1,000 Head</i>	<i>1,000 Head</i>	<i>1,000 Head</i>	<i>1,000 Head</i>	<i>1,000 Head</i>	<i>1,000 Head</i>
1	1.0	0.4	0.2					0.2
2	4.8	1.2	0.3	2.9	2.2	0.7	0.4	28.2
3	89.4	38.3	6.8	42.1	33.5	8.6	2.2	12.7
4	78.2	1.2	0.4	66.0	10.9	55.1	10.6	0.4
5	356.8	167.9	41.7	136.0	68.6	67.4	11.3	22.4
6	618.9	323.1	190.7	93.0	14.2	78.7	12.1	2.5
7	1,269.7	733.9	465.8	61.1	1.7	59.4	8.9	0.1
8	305.3	173.4	112.6					
9	173.2	90.6	10.1	69.6	57.4	12.2	3.0	19.1
10	119.7	49.5	32.2	32.4	13.8	18.6	5.7	
US ²	3,017.0	1,579.6	860.7	519.8	208.5	311.3	56.9	86.7
	Hogs				Sheep			
	Total ²	Barrows & Gilts	Sows	Boars	Total ²	Mature Sheep	Lambs & Yearlings	
	<i>1,000 Head</i>	<i>1,000 Head</i>	<i>1,000 Head</i>	<i>1,000 Head</i>	<i>1,000 Head</i>	<i>1,000 Head</i>	<i>1,000 Head</i>	<i>1,000 Head</i>
1	1.7	1.6			2.0	0.2		1.8
2	12.2	11.9	0.2	0.1	14.0	1.6		12.5
3	439.0	421.6	2.6	14.7	9.4	0.6		8.8
4	1,335.4	1,266.7	67.4	1.4	3.9	1.2		2.7
5	2,485.9	2,349.7	132.8	3.4	29.9	3.3		26.6
6	475.6	448.9	26.7					
7	4,001.2	3,903.9	73.8	23.5	30.2	0.5		29.8
8	371.8	370.3	1.4		70.6	1.5		69.0
9	220.8	220.8						
10	29.5	29.4	0.1		2.7	0.1		2.6
US ²	9,373.1	9,024.7	305.1	43.3	193.1	10.6		182.5

¹ States included in regions are as follows: 1- CT, ME, NH, VT, MA, & RI; 2- NY & NJ; 3- DE-MD, PA, WV, & VA; 4- AL, FL, GA, KY, MS, NC, SC, & TN; 5- IL, IN, MI, MN, OH, & WI; 6- AR, LA, NM, OK, & TX; 7- IA, KS, MO, & NE; 8- CO, MT, ND, SD, UT, & WY; 9- AZ, CA, HI & NV; 10- AK, ID, OR, & WA.

² Regions with no data printed are still included in the US and Region total, data not printed to avoid disclosing individual operations. Totals may not add due to rounding.

**Federally Inspected Slaughter: By Region and United States,
January - July 2008¹**

Standard Federal Regions	Cattle							Calves
	Total ²	Steers	Heifers	Cows			Bulls	Total
				All	Dairy	Other		
	<i>1,000 Head</i>	<i>1,000 Head</i>	<i>1,000 Head</i>	<i>1,000 Head</i>	<i>1,000 Head</i>	<i>1,000 Head</i>	<i>1,000 Head</i>	<i>1,000 Head</i>
1	6.2	2.7	1.1					1.3
2	32.1	10.4	2.0	17.2	14.1	3.0	2.5	157.8
3	590.7	248.8	56.7	270.4	215.0	55.5	14.8	91.5
4	499.8	8.9	3.1	421.9	80.6	341.3	65.9	2.3
5	2,368.6	1,048.8	296.0	960.9	490.0	470.8	62.9	125.5
6	4,034.4	2,149.6	1,234.4	569.2	100.5	468.7	81.2	16.1
7	8,508.6	4,784.1	3,224.7	444.3	10.3	434.0	55.6	0.4
8	2,005.5	1,051.1	820.5					
9	1,232.9	644.3	82.4	486.5	422.6	63.9	19.8	108.8
10	787.4	323.9	226.4	207.9	94.0	113.8	29.2	
US ²	20,066.3	10,272.7	5,947.3	3,499.1	1,468.2	2,030.9	347.2	511.4
	Hogs				Sheep			
	Total ²	Barrows & Gilts	Sows	Boars	Total ²	Mature Sheep	Lambs & Yearlings	
	<i>1,000 Head</i>	<i>1,000 Head</i>	<i>1,000 Head</i>	<i>1,000 Head</i>	<i>1,000 Head</i>	<i>1,000 Head</i>	<i>1,000 Head</i>	
1	7.8	7.5			13.6	0.8	12.8	
2	76.6	74.7	1.1	0.8	97.8	9.7	88.1	
3	3,182.9	3,078.7	17.5	86.7	59.9	3.0	57.0	
4	9,528.0	9,029.2	486.4	12.3	22.1	7.3	14.8	
5	17,588.0	16,651.9	911.8	24.3	212.7	22.4	190.3	
6	3,352.6	3,176.6	169.1	6.9				
7	28,109.2	27,467.4	495.5	146.3	195.4	2.9	192.5	
8	2,874.7	2,869.3	5.4	0.1	585.9	11.2	574.7	
9	1,490.3	1,489.5						
10	205.0	204.2	0.8	0.1	15.4	0.9	14.5	
US ²	66,415.3	64,049.0	2,088.4	277.9	1,398.5	70.5	1,328.0	

¹ States included in regions are as follows: 1- CT, ME, NH, VT, MA, & RI; 2- NY & NJ; 3- DE-MD, PA, WV, & VA; 4- AL, FL, GA, KY, MS, NC, SC, & TN; 5- IL, IN, MI, MN, OH, & WI; 6- AR, LA, NM, OK, & TX; 7- IA, KS, MO, & NE; 8- CO, MT, ND, SD, UT, & WY; 9- AZ, CA, HI & NV; 10- AK, ID, OR, & WA.

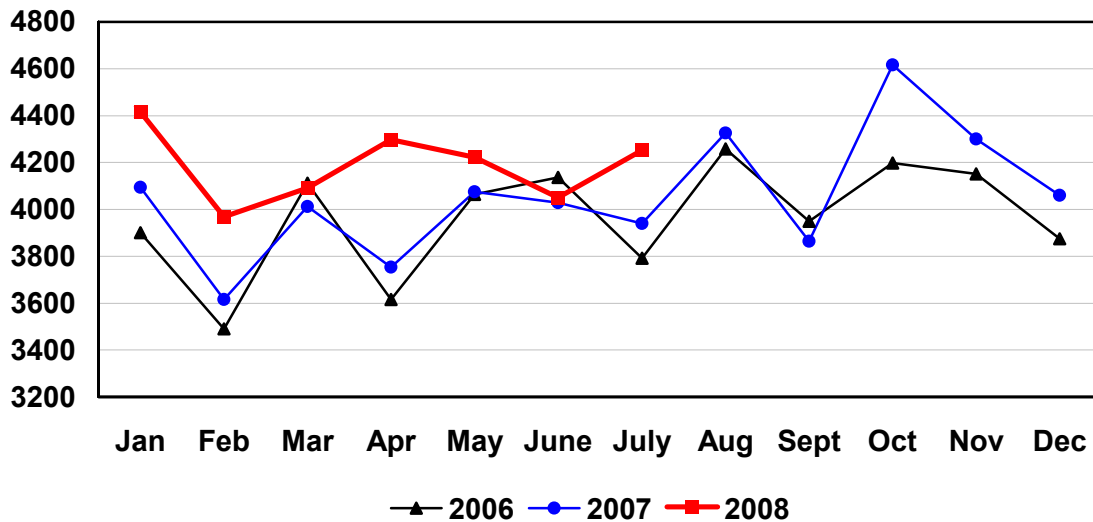
² Regions with no data printed are still included in the US and Region total, data not printed to avoid disclosing individual operations. Totals may not add due to rounding.

Federally Inspected Slaughter: Percent of Total Commercial Slaughter by Species, United States

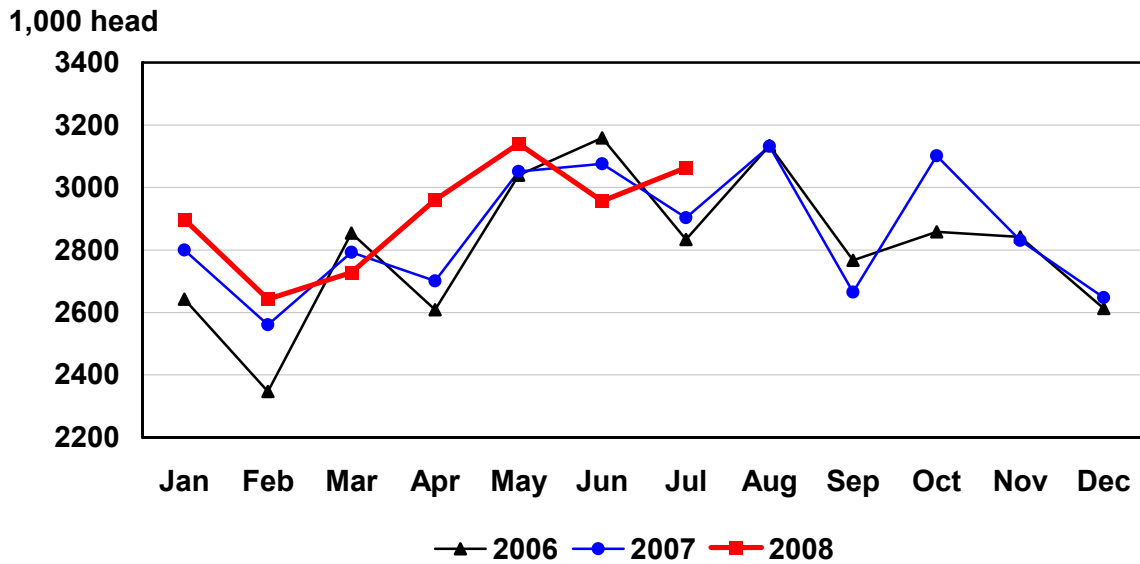
Species	Jul 2007	Jun 2008	Jul 2008	Jan - Jul	
	Percent	Percent	Percent	2007	2008
Cattle	98.5	98.5	98.5	98.4	98.4
Calves	98.7	98.5	98.7	98.4	98.5
Hogs	99.0	99.1	99.0	99.1	99.1
Sheep	92.8	93.9	92.9	94.3	94.2

U.S. Monthly Commercial Red Meat Production

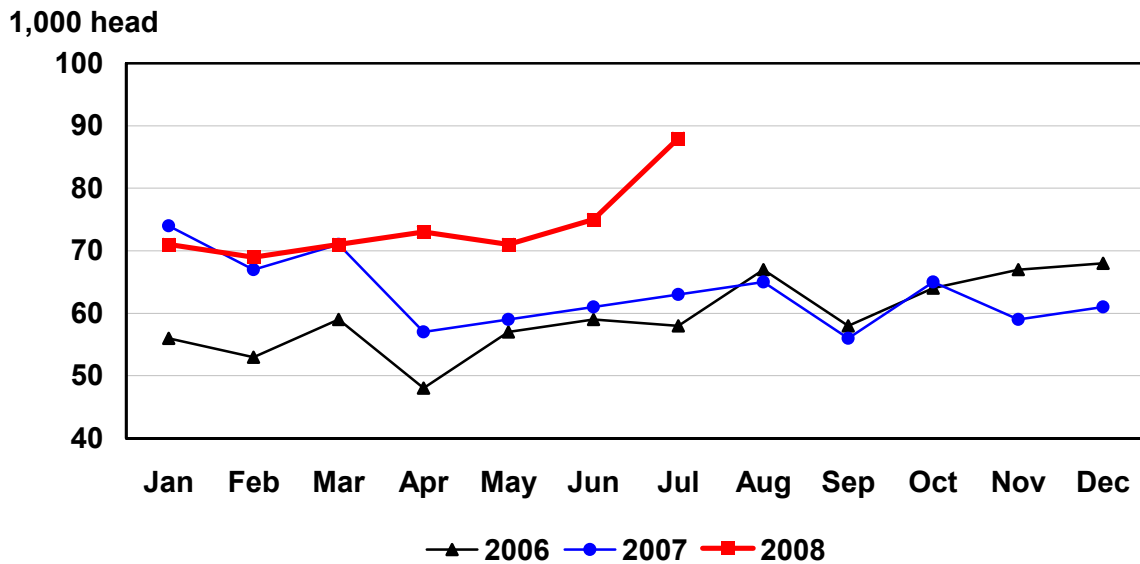
Million Pounds



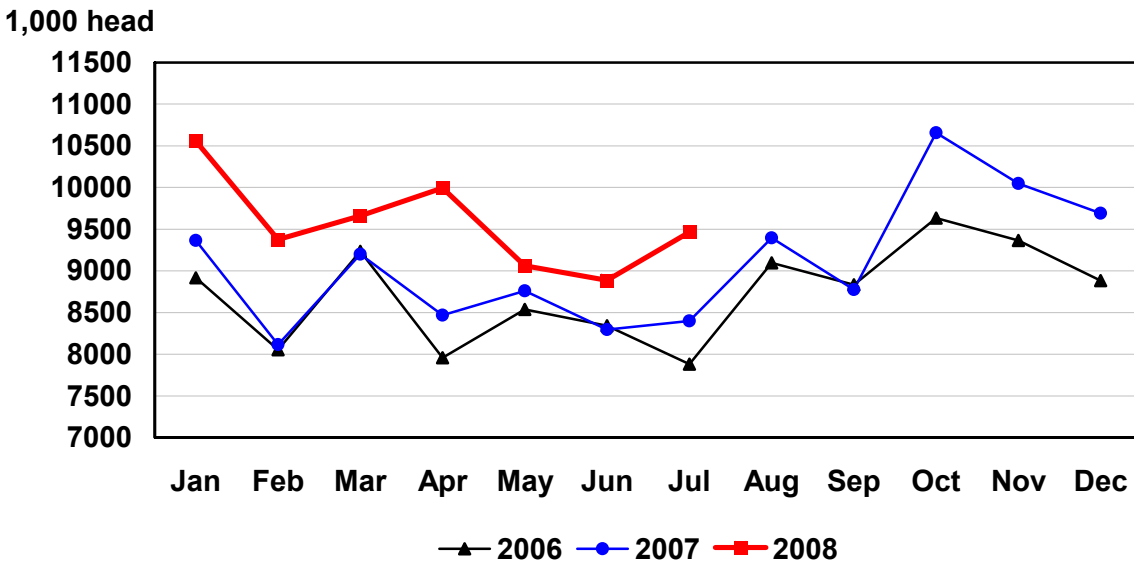
U.S. Monthly Commercial Slaughter Cattle



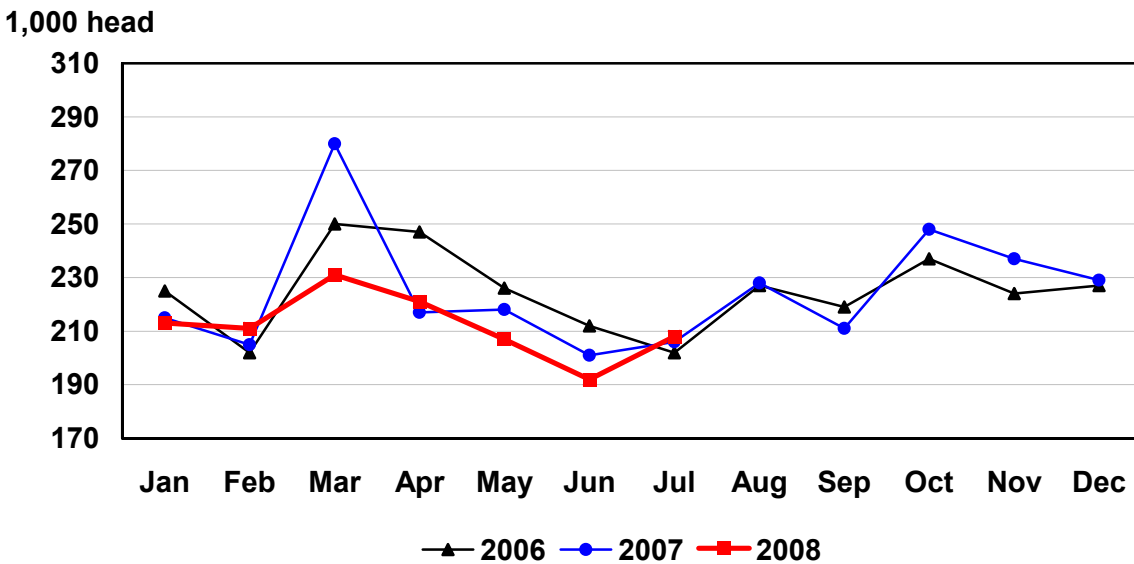
U.S. Monthly Commercial Slaughter Calves



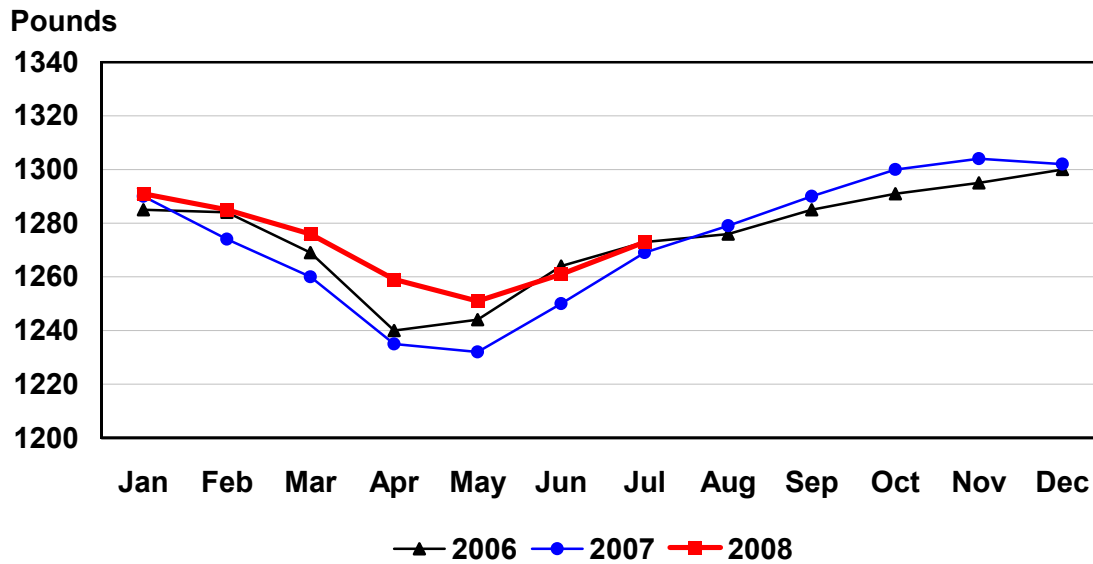
U.S. Monthly Commercial Slaughter Hogs



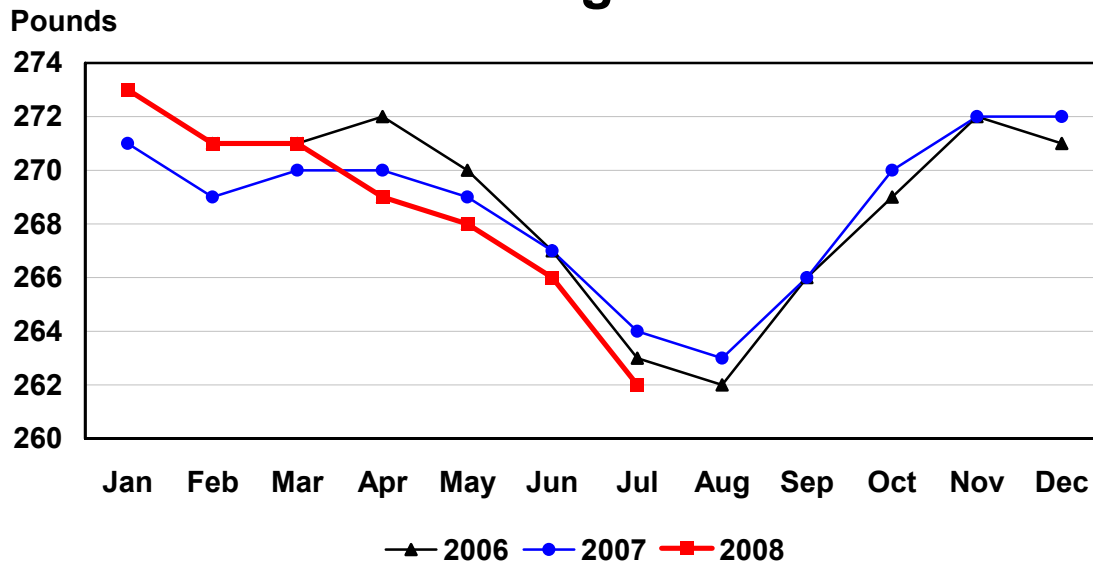
U.S. Monthly Commercial Slaughter Sheep



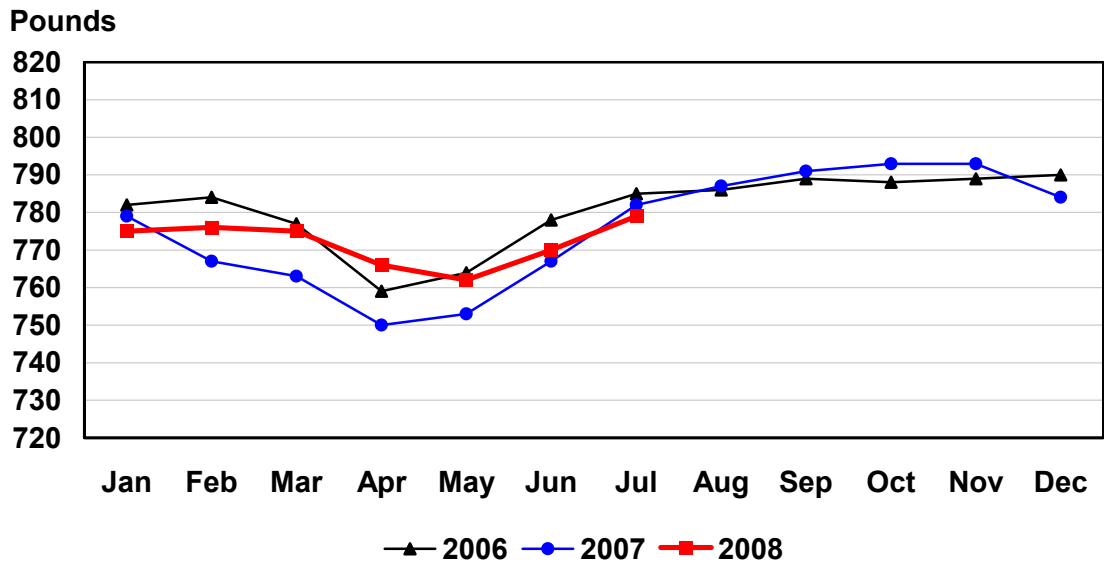
U.S. Monthly Commercial Slaughter Average Live Weight Cattle



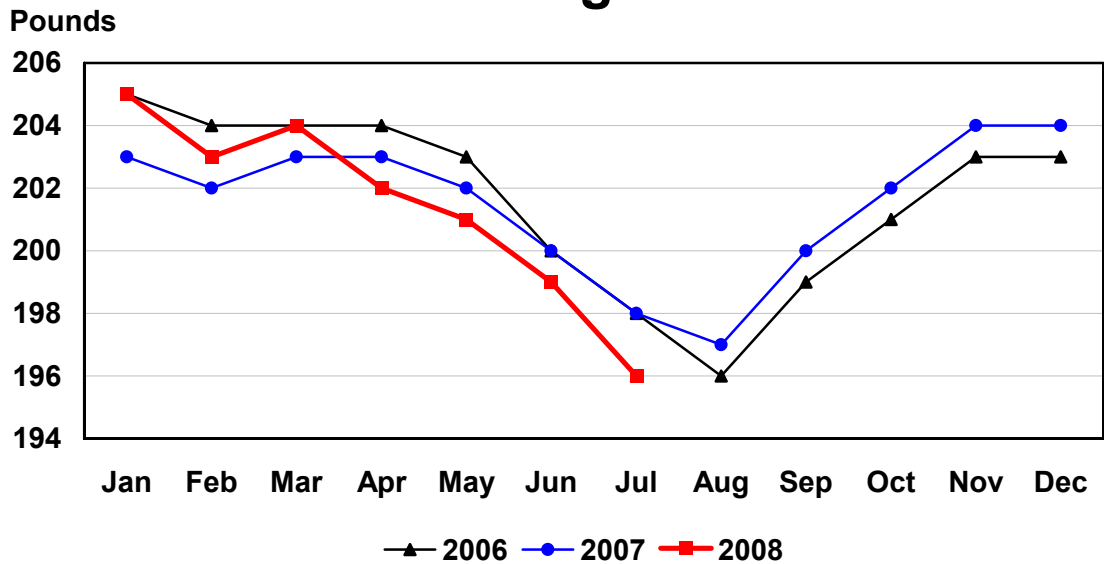
U.S. Monthly Commercial Slaughter Average Live Weight Hogs



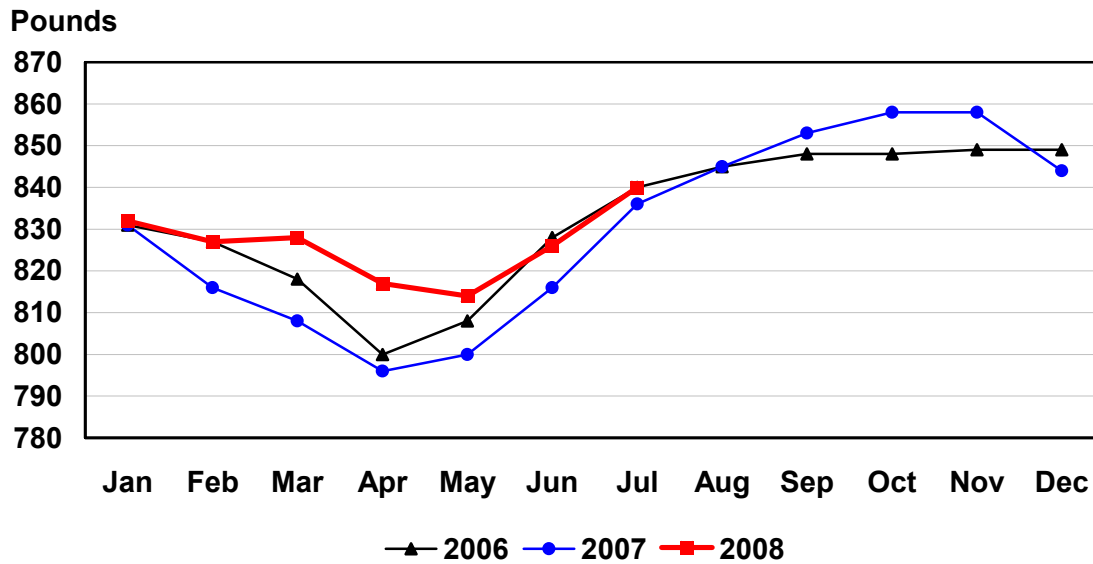
U.S. Monthly Federally Inspected Average Dressed Weight Cattle



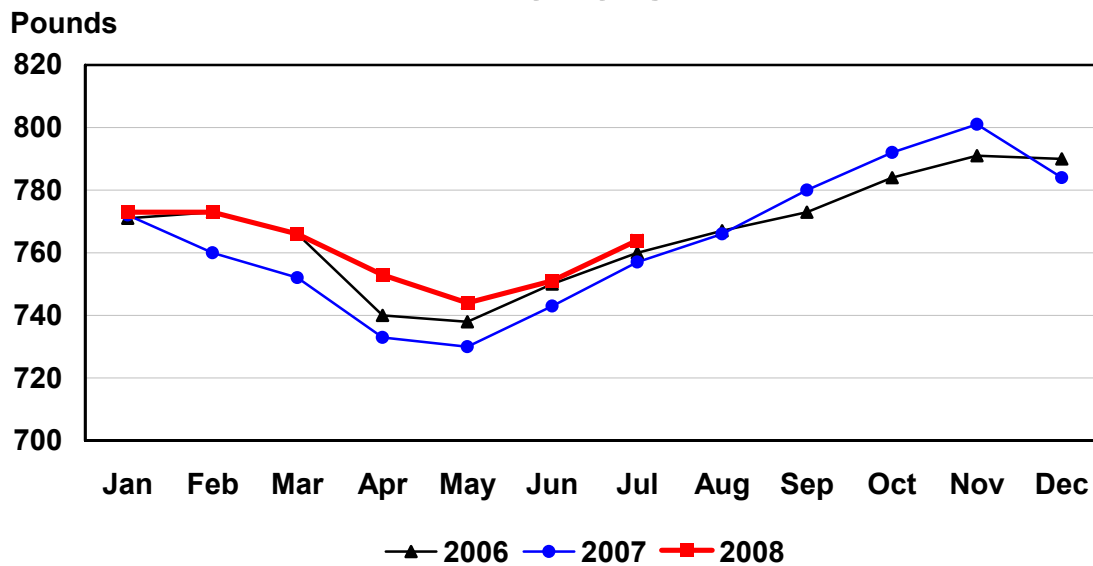
U.S. Monthly Federally Inspected Average Dressed Weight Hogs



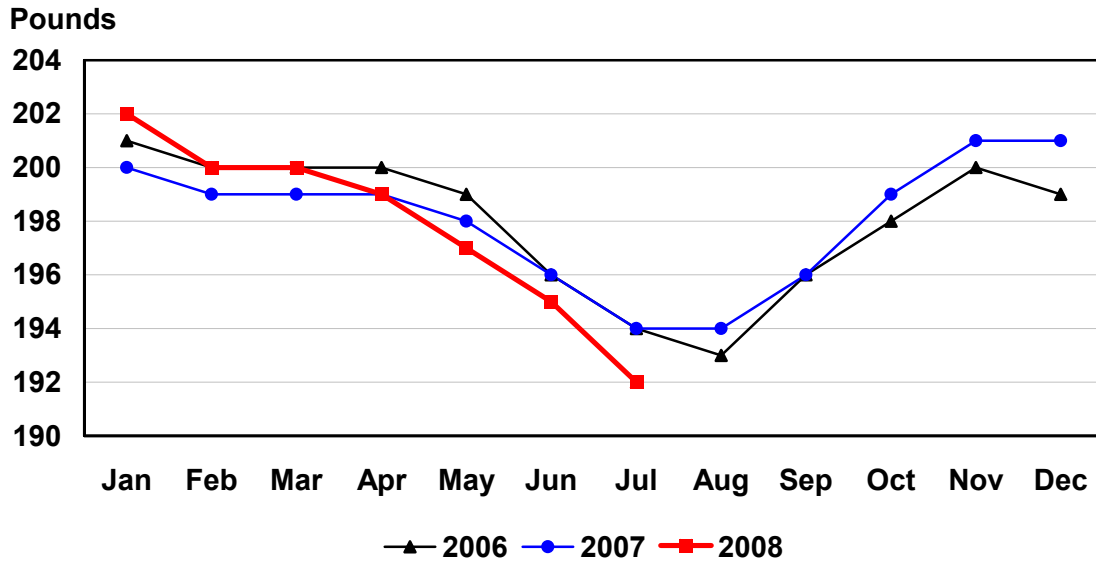
U.S. Monthly Federally Inspected Average Dressed Weight Steers



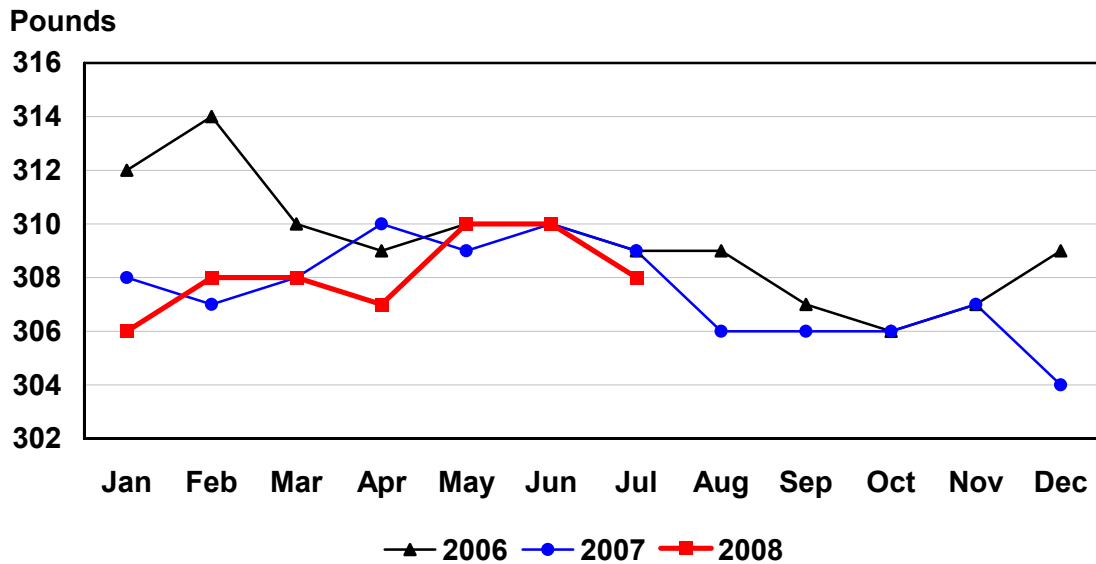
U.S. Monthly Federally Inspected Average Dressed Weight Heifers



U.S. Monthly Federally Inspected Average Dressed Weight Barrows and Gilts



U.S. Monthly Federally Inspected Average Dressed Weight Sows



Reliability of Livestock Slaughter Estimates

Data Sources: Primary data for the commercial livestock slaughter estimates are obtained from electronic reports completed by inspectors from the Food Safety and Inspection Service (FSIS), USDA, which provide daily counts of animals slaughtered in Federally Inspected (FI) plants, in addition to total live and dressed weights. These counts are combined with data from State-administered Non-Federally Inspected (NFI) slaughter plants to derive total commercial slaughter estimates. More than 95 percent of the total U.S. slaughter for any species is under Federal Inspection.

There are nearly 800 livestock slaughter plants in the U.S. operating under Federal Inspection and over 2,000 Non-Federally Inspected (State-inspected or custom-exempt) slaughter plants. Slaughter from State-inspected Talmedge-Aiken plants is included in FI totals (see Types of Plants, page 20). To prevent duplication in reporting between FI and NFI plants and assure all FI plants are included, certificates prepared by FSIS identifying operating status are constantly monitored

Revision Policy: Number of head slaughtered, live weights, and dressed weights are subject to revision the following month after the monthly release. Annual totals are published in the slaughter summary each March which includes any revisions made to current and previous year's published data. Revisions are generally the result of late reports received from slaughter plants and are usually less than one-half of one percent. No revisions will be made to the previous year's data after the publication of the annual summary in March.

Procedures and Reliability: The livestock slaughter data is obtained electronically on a daily basis and summarized approximately two weeks after the week of slaughter. An edit compares each plant's data with the historical data for that plant. Data are checked for unusual values for head kill, patterns of kill, average weights, and dressing percent, based on each plant's past operating profile. In addition, the edit provides a listing of missing reports for follow-up contact with FSIS. Average live and dressed weights and dressing percentages by State are compared with the previous weeks as an additional check. Fluctuations are frequently the result of plants permanently or temporarily closing and a shift in the species reported.

The FSIS District Veterinary Medical Specialists (DVMS) are contacted by e-mail or telephone for missing or potentially erroneous slaughter data. This assures that plants slaughtering a large number of head or several species are accounted for each week. Any corrections FSIS makes to the slaughter data are included in the summary.

Imputation may be necessary for incomplete reports. The imputation of live and dressed weights is based on the current week reported data of plants of similar size and location. Imputation for live and dressed weight data for cattle and hogs is less than 10 percent and 7 percent, respectively. The imputation for calves and sheep is more frequent and variable. If no data is received electronically or by other means, for plants slaughtering fewer than 50 total head weekly of only one species, data are imputed. The imputation of head for any plant is based on the historical data for that particular plant. The imputation of head slaughtered is rare but when necessary, the imputed head kill for missing plants usually is less than 1 percent of the U.S. head kill totals.

FI data are summarized weekly and accumulated to a monthly total for this release. These weekly totals are published by USDA's Agricultural Marketing Service (AMS) in **Livestock, Meat, Wool Market News**, Weekly Summary, and Statistics and are also available on the NASS website. NFI data are summarized monthly only.

Livestock slaughter estimates are based on a census of operating plants and therefore, have no sampling error. However, they may be subject to errors such as omissions, duplications and mistakes in reporting, recording and processing the data. These errors are minimized through rigid quality controls in the edit and summarization process, and a careful review of all reported data for consistency and reasonableness.

No data are published when an individual plant's data could be divulged. If not published, these data are still included in US and region totals. A review of the data is made annually to determine the publishable data.

Types of Livestock Slaughter Plants

There are generally **four types** of slaughtering plants.

- (1) **Federally Inspected (FI) Plants:** Plants that transport meat interstate must employ federal inspectors to assure compliance with USDA standards. Any State whose commercial plants operate entirely under federal inspection may still have custom-exempt establishments for which NFI estimates are made.
- (2) **Talmedge-Aiken (TA) Plants:** Slaughter plants in which USDA is responsible for inspection. However, federal inspection is carried out by State employees. These plants are considered to be federally inspected.
- (3) **Non-Federally Inspected (NFI) Plants:** Plants which sell and transport only intrastate. State inspectors assure compliance with individual State standards for these NFI plants. Mobile slaughtering units are excluded and are considered farm slaughter.
- (4) **Custom-Exempt Plants:** Plants that do not sell meat but operate on a custom basis only are custom-exempt. The animals and meat are not inspected, but the facilities must meet health standards. These are considered NFI plants and head kill is included in NFI totals.

Terms and Definitions Used for Livestock Slaughter Estimates

Average Live Weight: Excludes post-mortem condemnations

Commercial Production: Includes slaughter and meat production in federally inspected and other plants, but excludes animals slaughtered on farms.

Dressed Weight: The weight of a chilled animal carcass. Beef with kidney knob in; veal with hide off; lamb and mutton with pluck out; pork with leaf fat and kidneys out, jowls on and head off.

Dressing Percent: Usually expressed as a percentage yield of chilled carcass in relation to the weight of the live animal on hoof. For example, a live hog that weighed 200 pounds on hoof and yielded a carcass weighing 140 pounds would have a dressing percentage of 70.

Food and Meat Inspection: Includes examination, checking, or testing of a carcass and/or meat against established government standards and involves checking the facility for cleanliness, health of animals, or parts of animals and quality of the meat produced.

Number of Head: Includes post-mortem condemnations.

Plant, Slaughter: An establishment where animals are killed and butchered.

Red Meat: Red meat production is the carcass weight after slaughter excluding condemnation and is comprised of beef, veal, pork, and lamb and mutton. The FI red meat production is equal to the total carcass weight after slaughter. The NFI meat production formula is (NFI head kill) X (live weight) X (FI dressing percentage) = NFI red meat production.

Slaughter: Killing and butchering of animals primarily for food.

Slaughter, Farm: Animals slaughtered on farms primarily for home consumption. Excludes custom slaughter for farmers at commercial establishments, but includes mobile slaughtering on farms. These estimates appear only in the annual slaughter release.

Total Live Weight: Excludes post-mortem condemnations.

Wholesome Meat Act: Legislation that specifies that all meat produced for sale in the U.S. must be inspected. Meat that is transported interstate must be inspected in compliance with Federal (USDA) Standards.

Information Contacts

Listed below are the commodity specialists in the Livestock Branch of the National Agricultural Statistics Service to contact for additional information.

Dan Kerestes, Chief, Livestock Branch.....	(202) 720-3570
Scott Hollis, Head, Livestock Section.....	(202) 690-2424
Jim Collom – Dairy Products.....	(202) 690-3236
Joe Gaynor – Dairy Products Prices.....	(202) 690-2168
Jason Hardegree – Cattle, Cattle on Feed.....	(202) 720-3040
Benita Hodge – Livestock Slaughter.....	(515) 284-4340
Mike Miller – Milk Production and Milk Cows.....	(202) 720-3278
Everett Olbert – Sheep and Goats.....	(202) 720-4751
Nicholas Streff – Hogs and Pigs.....	(202) 720-3106

ACCESS TO REPORTS!!

For your convenience, there are several ways to obtain NASS reports, data products, and services:

INTERNET ACCESS

All NASS reports are available free of charge on the worldwide Internet. For access, connect to the Internet and go to the NASS Home Page at: www.nass.usda.gov.

E-MAIL SUBSCRIPTION

All NASS reports are available by subscription free of charge direct to your e-mail address. Starting with the NASS Home Page at www.nass.usda.gov, under the right navigation, *Receive reports by Email*, click on **National** or **State**. Follow the instructions on the screen.

PRINTED REPORTS OR DATA PRODUCTS

CALL OUR TOLL-FREE ORDER DESK: 800-999-6779 (U.S. and Canada)
Other areas, please call 703-605-6220 FAX: 703-605-6900
(Visa, MasterCard, check, or money order acceptable for payment.)

ASSISTANCE

For **assistance** with general agricultural statistics or further information about NASS or its products or services, contact the **Agricultural Statistics Hotline** at **800-727-9540**, 7:30 a.m. to 4:00 p.m. ET, or e-mail: nass@nass.usda.gov.

The U.S. Department of Agriculture (USDA) prohibits discrimination in all its programs and activities on the basis of race, color, national origin, age, disability, and where applicable, sex, marital status, familial status, parental status, religion, sexual orientation, genetic information, political beliefs, reprisal, or because all or part of an individual's income is derived from any public assistance program. (Not all prohibited bases apply to all programs.) Persons with disabilities who require alternative means for communication of program information (Braille, large print, audiotope, etc.) should contact USDA's TARGET Center at (202) 720-2600 (voice and TDD).

To file a complaint of discrimination, write to USDA, Director, Office of Civil Rights, 1400 Independence Avenue, S.W., Washington, D.C. 20250-9410, or call (800) 795-3272 (voice) or (202) 720-6382 (TDD). USDA is an equal opportunity provider and employer.

USDA Data Users' Meeting

October 20, 2008

Doubletree Hotel Chicago O'Hare Airport-Rosemont

Rosemont, Illinois

(847) 292-9100

The USDA's National Agricultural Statistics Service will be organizing an open forum for data users. The purpose will be to provide updates on pending changes in the various statistical and information programs and seek comments and input from data users. Other USDA agencies to be represented will include the Agricultural Marketing Service, the Economic Research Service, the Foreign Agricultural Service, and World Agricultural Outlook Board. The Foreign Trade Division from the Census Bureau will also be included in the meeting.

For registration details or additional information for the Data Users' Meeting, see the NASS homepage at www.nass.usda.gov/forum/ or contact Marjorie Taylor (NASS) at (202) 690-8141 or at marjorie_taylor@nass.usda.gov.

This Data Users' Meeting precedes an Industry Outlook meeting that will be held at the same location on October 21, 2008. The Outlook meeting brings together analysts from various commodity sectors to discuss the outlook situation. For registration details or additional information for the Industry Outlook Meeting see the Livestock and Marketing Information Center (LMIC) homepage at www.lmic.info or contact Jim Robb at (720) 544-2941 or at robb@lmic.info.