
Released September 26, 2008, by the National Agricultural Statistics Service (NASS), Agricultural Statistics Board, U.S. Department of Agriculture. For information on *Livestock Slaughter* call Benita Hodge at (515) 284-4340, office hours 7:00 a.m. to 4:00 p.m. CT.

August Total Red Meat Production Below Previous Year

Commercial red meat production for the United States totaled 4.10 billion pounds in August, down 5 percent from the 4.33 billion pounds produced in August 2007.

Beef production, at 2.27 billion pounds, was 7 percent below the previous year. Cattle slaughter totaled 2.91 million head, down 7 percent from August 2007. The average live weight was up 5 pounds from the previous year, at 1,284 pounds.

Veal production totaled 11.2 million pounds, 9 percent above August a year ago. Calf slaughter totaled 79,200 head, up 21 percent from August 2007. The average live weight was down 23 pounds from last year, at 245 pounds.

Pork production totaled 1.80 billion pounds, down 2 percent from the previous year. Hog kill totaled 9.27 million head, down 1 percent from August 2007. The average live weight was down 2 pounds from the previous year, at 261 pounds.

Lamb and mutton production, at 13.3 million pounds, was down 10 percent from August 2007. Sheep slaughter totaled 200,700 head, 12 percent below last year. The average live weight was 132 pounds, up 3 pounds from August a year ago.

January to August 2008 commercial red meat production was 33.4 billion pounds, up 5 percent from 2007. Accumulated beef production was up 2 percent from last year, veal was down 4 percent, pork was up 9 percent from last year, and lamb and mutton production was down 4 percent.

August 2007 contained 23 weekdays (including no holidays) and 4 Saturdays.

August 2008 contained 21 weekdays (including no holidays) and 5 Saturdays.

Contents

	Page
Red Meat Production, Commercial and FI, by Type, U.S.	1
Livestock Slaughter, Number and Average Weights, by Species and Type of Slaughter, U.S.	2
Commercial Red Meat Production, by State and U.S.	3
Commercial Cattle Slaughter, Number, Total and Average Live Weight, by State and U.S.	4
Commercial Calf Slaughter, Number, Total and Average Live Weight, by State and U.S.	5
Commercial Hog Slaughter, Number, Total and Average Live Weight, by State and U.S.	6
Commercial Sheep and Lamb Slaughter, Number, Total and Average Live Weight, by State and U.S.	7
Federally Inspected Classification of Number and Average Dressed Weight, by Species and Class and U.S.	8
Federally Inspected Slaughter by Species and Class, by Region and U.S.	9
Federally Inspected Percent of Total Commercial, by Species, U.S.	11
Reliability Statement.....	18
Types of Plants.....	19
Terms and Definitions	20
Information Contacts	20

Commercial Red Meat Production: United States ¹

Type	Aug 2007	Jul 2008	Aug 2008	Aug 08 % of		Jan - Aug ²		
				Aug 2007	Jul 2008	2007	2008	08 as % of 07
	<i>Million Pounds</i>	<i>Million Pounds</i>	<i>Million Pounds</i>	<i>Percent</i>	<i>Percent</i>	<i>Million Pounds</i>	<i>Million Pounds</i>	<i>Percent</i>
Beef	2,450.6	2,372.7	2,268.5	93	96	17,592.7	17,909.8	102
Veal	10.3	12.3	11.2	109	91	96.3	92.3	96
Pork	1,850.0	1,852.9	1,804.4	98	97	14,033.6	15,273.8	109
Lamb & Mutton	14.8	13.7	13.3	90	97	121.7	116.3	96
Total Red Meat ³	4,325.7	4,251.6	4,097.4	95	96	31,844.2	33,392.1	105

¹ Based on packers' dressed weights and excludes farm slaughter.

² Accumulated totals and percentages based on unrounded data.

³ Totals may not equal sum of the parts due to rounding.

Federally Inspected Red Meat Production: United States ¹

Type	Aug 2007	Jul 2008	Aug 2008	Aug 08 % of		Jan - Aug ²		
				Aug 2007	Jul 2008	2007	2008	08 as % of 07
	<i>Million Pounds</i>	<i>Million Pounds</i>	<i>Million Pounds</i>	<i>Percent</i>	<i>Percent</i>	<i>Million Pounds</i>	<i>Million Pounds</i>	<i>Percent</i>
Beef	2,421.6	2,341.9	2,238.8	92	96	17,361.7	17,671.2	102
Veal	10.1	12.1	11.0	108	91	94.6	90.3	95
Pork	1,833.6	1,837.4	1,787.9	98	97	13,921.0	15,155.4	109
Lamb & Mutton	13.9	13.0	12.5	90	97	116.4	111.1	95
Total Red Meat ³	4,279.2	4,204.3	4,050.2	95	96	31,493.6	33,027.9	105

¹ Based on packers' dressed weights and excludes farm slaughter.

² Accumulated totals and percentages based on unrounded data.

³ Totals may not equal sum of the parts due to rounding.

Livestock Slaughter: Number and Average Weights, United States ¹

Species	Unit	Aug 2007	Jul 2008	Aug 2008	Aug 08 % of		Jan - Aug ²		
					Aug 2007	Jul 2008	2007	2008	08 % of 07
					<i>Percent</i>	<i>Percent</i>			<i>Prent</i>
Cattle No.									
Fed. Insp.	Thou	3,087.9	*3,017.1	2,865.5	93	95	22,663.9	22,931.9	101
Other	Thou	44.2	47.0	45.4	103	97	355.0	367.5	104
Comm'l. ³	Thou	3,132.1	3,064.0	2,910.9	93	95	23,018.9	23,299.4	101
Live Wt/Hd									
Fed. Insp.	Lbs	1,281	1,275	1,286	100	101	1,263	1,274	101
Other	Lbs	1,147	1,148	1,149	100	100	1,144	1,146	100
Comm'l.	Lbs	1,279	1,273	1,284	100	101	1,261	1,272	101
Calves No.									
Fed. Insp.	Thou	64.5	86.7	78.1	121	90	508.9	589.5	116
Other	Thou	0.9	1.2	1.2	122	98	8.0	9.0	113
Comm'l. ³	Thou	65.5	87.9	79.2	121	90	516.8	598.5	116
Live Wt/Hd									
Fed. Insp.	Lbs	267	241	243	91	101	312	262	84
Other	Lbs	386	415	408	106	98	396	402	102
Comm'l.	Lbs	268	243	245	91	101	314	265	84
Hogs No.									
Fed. Insp.	Thou	9,295.6	9,373.1	9,170.3	99	98	69,334.6	75,585.6	109
Other	Thou	98.9	92.2	97.3	98	106	668.5	686.4	103
Comm'l. ³	Thou	9,394.5	*9,465.3	9,267.6	99	98	70,003.1	76,272.0	109
Live Wt/Hd									
Fed. Insp.	Lbs	264	263	261	99	99	268	268	100
Other	Lbs	230	234	236	103	101	233	239	102
Comm'l.	Lbs	263	262	261	99	99	268	268	100
Sheep&Lambs No.									
Fed. Insp.	Thou	212.0	193.1	186.1	88	96	1,664.9	1,584.6	95
Other	Thou	16.1	14.7	14.7	91	100	103.9	100.3	97
Comm'l. ³	Thou	228.1	207.8	200.7	88	97	1,768.9	1,684.9	95
Live Wt/Hd									
Fed. Insp.	Lbs	130	134	134	103	100	139	140	101
Other	Lbs	111	105	107	97	102	103	106	102
Comm'l.	Lbs	129	132	132	103	100	137	138	101
Goats No.									
Fed. Insp.	Thou	55.6	56.7	58.2	105	103	406.6	425.9	105
Other	Thou	16.2	15.6	16.9	105	108	122.3	123.9	101
Comm'l. ³	Thou	71.8	72.3	75.1	105	104	529.0	549.9	104
Live Wt/Hd									
Fed. Insp.	Lbs	62	62	62	101	101	61	62	101
Other	Lbs	52	51	56	108	110	58	62	106
Comm'l.	Lbs	59	59	61	102	102	61	62	102
Bison No.									
Fed. Insp.	Thou	4.6	5.1	3.8	82	74	34.1	37.8	111
Other	Thou	1.2	1.1	1.1	95	97	11.5	10.5	92
Comm'l. ³	Thou	5.8	6.3	4.9	84	78	45.6	48.3	106

* Revised.

¹ Excludes slaughter on farms.

² Accumulated totals and percentages based on unrounded data.

³ Totals may not equal sum of the parts due to rounding.

Commercial Red Meat Production: By State and United States ¹

State	Aug 2007	Jul 2008	Aug 2008	Aug 08 as % of ²	
				Aug 2007	Jul 2008
	<i>Million Pounds</i>	<i>Million Pounds</i>	<i>Million Pounds</i>	<i>Percent</i>	<i>Percent</i>
AL	2.1	2.2	1.9	92	88
AK	0.1	0.1	0.1	126	99
AZ	35.6	34.9	33.9	95	97
AR	5.1	5.7	5.4	106	95
CA	144.9	133.5	133.3	92	100
CO	167.6	198.3	180.7	108	91
DE-MD	3.2	2.9	3.1	96	108
FL	7.3	9.7	9.1	124	94
GA	14.5	13.4	13.7	94	102
HI	0.9	1.0	0.9	101	94
ID	16.3	20.3	20.0	123	99
IL	263.4	242.2	236.4	90	98
IN	131.7	137.8	131.4	100	95
IA	552.6	568.1	558.3	101	98
KS	589.4	474.6	467.0	79	98
KY	45.6	45.6	44.5	98	98
LA	0.6	0.5	0.5	92	106
MI	46.3	44.4	44.1	95	99
MN	201.2	215.6	206.5	103	96
MS	1.3	1.3	1.2	96	95
MO	124.5	135.5	123.8	99	91
MT	1.3	1.8	1.8	132	98
NE	680.3	650.7	625.0	92	96
NV	0.1	0.1	0.1	132	77
N ENG ³	1.1	1.2	1.1	101	97
NJ	4.4	3.8	3.7	84	98
NM	0.5	0.4	0.5	110	119
NY	3.0	3.3	3.0	100	90
NC	206.1	195.7	195.3	95	100
ND	2.4	2.3	2.2	95	99
OH	25.8	27.4	26.6	103	97
OK	82.6	89.0	82.6	100	93
OR	5.4	4.9	4.9	91	99
PA	111.8	112.6	109.2	98	97
SC	21.4	20.4	20.2	94	99
SD	93.6	77.8	73.7	79	95
TN	19.4	16.2	17.4	90	108
TX	425.8	474.9	441.6	104	93
UT	43.9	48.0	46.8	107	97
VA	38.3	36.7	37.1	97	101
WA	81.0	71.3	66.8	83	94
WV	0.5	0.4	0.6	103	129
WI	122.2	*124.8	120.4	99	97
WY	0.9	0.6	0.9	98	149
US	4,325.7	4,251.6	4,097.4	95	96

* Revised.

¹ Includes total beef, veal, pork, lamb, and mutton.

² Percentages based on unrounded data.

³ N ENG includes CT, ME, MA, NH, RI, and VT.

**Commercial Cattle Slaughter: By State and United States,
August 2007 and 2008 ¹**

State	Number Slaughtered		Total Live Weight		Average Live Weight	
	2007	2008	2007	2008	2007	2008
	<i>1,000 Head</i>	<i>1,000 Head</i>	<i>1,000 Pounds</i>	<i>1,000 Pounds</i>	<i>Pounds</i>	<i>Pounds</i>
AL	0.4	0.4	349	406	877	953
AK		0.1		75		1,103
AZ	43.9	45.9	60,665	62,376	1,384	1,367
AR	1.0	0.8	974	778	1,030	991
CA	141.3	125.0	179,361	157,353	1,290	1,277
CO	194.5	209.0	253,911	276,240	1,306	1,322
DE-MD	3.5	3.4	4,571	4,305	1,293	1,275
FL						
GA	27.8		25,060		904	
HI	1.1	1.0	1,111	1,113	1,045	1,134
ID	20.7	27.6	24,999	34,071	1,224	1,250
IL						
IN	3.8	3.5	4,046	3,704	1,054	1,057
IA						
KS	718.7	558.2	911,096	721,340	1,268	1,293
KY	1.1	1.1	1,086	1,038	957	952
LA	0.6	0.6	514	459	846	754
MI	54.4	52.0	73,172	69,340	1,355	1,340
MN	61.7	71.3	84,636	98,144	1,381	1,383
MS	0.1	0.1	61	49	793	722
MO	7.1	7.1	8,717	8,424	1,236	1,198
MT	1.5	2.0	1,734	2,416	1,165	1,195
NE	677.8	606.1	887,315	802,305	1,311	1,325
NV	0.1	0.2	98	158	1,084	1,054
N ENG ²	1.1	1.1	1,197	1,216	1,080	1,107
NJ	2.8	2.8	3,389	3,028	1,219	1,088
NM	0.7	0.4	673	460	984	1,034
NY	2.3	2.2	2,586	2,633	1,145	1,200
NC	19.9	19.6	22,984	22,542	1,164	1,157
ND	1.0	1.0	1,179	1,193	1,224	1,229
OH	10.0	10.3	11,759	12,099	1,178	1,182
OK	1.9	2.0	1,992	2,121	1,044	1,082
OR	3.3	3.5	3,875	4,204	1,199	1,221
PA	86.2	85.3	106,399	104,853	1,243	1,240
SC	13.8	14.2	15,106	15,220	1,105	1,076
SD						
TN	2.2	2.4	1,957	2,001	912	853
TX	539.3	571.5	672,161	703,777	1,250	1,235
UT	54.5	56.6	69,753	74,089	1,283	1,311
VA	0.9	0.7	963	693	1,095	985
WA	98.7	84.1	130,895	108,349	1,332	1,294
WV	0.6	0.6	681	672	1,136	1,166
WI	148.0	142.8	193,266	187,488	1,319	1,326
WY	0.8	0.8	970	1,015	1,255	1,299
US ³	3,132.1	2,910.9	3,993,828	3,726,689	1,279	1,284

¹ Includes slaughter under Federal inspection and other Commercial slaughter, excludes farm slaughter.

² N ENG includes CT, ME, MA, NH, RI, and VT.

³ States with no data printed are still included in the US total, data not printed to avoid disclosing individual operations. Accumulated totals and percentages based on unrounded data.

**Commercial Calf Slaughter: By State and United States,
August 2007 and 2008 ¹**

State	Number Slaughtered		Total Live Weight		Average Live Weight	
	2007	2008	2007	2008	2007	2008
	<i>1,000 Head</i>	<i>1,000 Head</i>	<i>1,000 Pounds</i>	<i>1,000 Pounds</i>	<i>Pounds</i>	<i>Pounds</i>
AL						
AK						
AZ						
AR						
CA	11.5	17.0	1,399	1,986	122	118
CO						
DE-MD	0.2	0.2	49	55	281	269
FL		0.1		33		500
GA	0.1	0.1	39	39	415	501
HI						
ID						
IL	3.0	4.8	1,254	1,109	419	235
IN						
IA						
KS						
KY	0.1		27		502	
LA	0.2	0.3	113	161	495	528
MI	1.8	1.1	733	456	419	424
MN						
MS						
MO		0.1		20		400
MT						
NE						
NV						
N ENG ²	0.2	0.2	53	50	313	284
NJ	6.1	4.5	2,550	1,863	416	418
NM		2.2		191		87
NY	17.7	18.8	1,725	1,857	100	103
NC	0.1	0.1	62	72	533	494
ND						
OH	0.1	4.6	18	2,082	349	452
OK						
OR						
PA	13.9	13.3	5,359	4,536	385	342
SC						
SD						
TN	0.1	0.1	35	49	429	471
TX	0.8	1.1	498	357	597	335
UT						
VA	0.1		19		322	
WA						
WV						
WI						
WY						
US ³	65.5	79.2	17,435	19,135	268	245

¹ Includes slaughter under Federal inspection and other Commercial slaughter, excludes farm slaughter.

² N ENG includes CT, ME, MA, NH, RI, and VT.

³ States with no data printed are still included in the US total, data not printed to avoid disclosing individual operations. Accumulated totals and percentages based on unrounded data.

**Commercial Hog Slaughter: By State and United States,
August 2007 and 2008¹**

State	Number Slaughtered		Total Live Weight		Average Live Weight	
	2007	2008	2007	2008	2007	2008
	<i>1,000 Head</i>	<i>1,000 Head</i>	<i>1,000 Pounds</i>	<i>1,000 Pounds</i>	<i>Pounds</i>	<i>Pounds</i>
AL	7.7	7.2	3,418	3,159	444	440
AK	0.1	0.1	30	28	219	217
AZ	0.1	0.1	25	16	252	257
AR	15.5	16.5	6,952	7,607	447	461
CA	231.4	232.6	53,777	54,672	233	235
CO	1.5	1.7	377	433	252	253
DE-MD	1.9	1.8	428	431	230	241
FL	7.5	6.9	1,064	769	143	111
GA	11.0	8.9	2,506	2,098	228	235
HI	1.9	1.7	397	398	209	228
ID	14.1	11.6	3,460	2,849	247	246
IL	912.1	828.4	248,030	222,629	272	269
IN	666.9	670.9	170,691	170,887	256	255
IA	2,531.3	2,664.4	667,732	689,484	264	259
KS	19.3		8,374		437	
KY	227.9		59,554		262	
LA	1.1	0.9	224	180	206	192
MI	12.4	11.8	4,209	4,156	339	352
MN	799.4	788.3	206,416	203,050	259	258
MS		5.6		1,665		295
MO	594.8	597.2	158,346	158,183	266	265
MT	1.6	1.8	382	418	236	238
NE	635.4	648.5	167,259	168,345	263	260
NV						
N ENG ²	2.0	2.2	395	436	194	202
NJ	9.8	8.4	981	829	100	98
NM	0.1	0.4	31	101	243	251
NY	3.5	2.9	572	535	164	183
NC	1,013.5	988.7	256,954	244,238	254	247
ND	10.2	9.2	2,537	2,311	248	252
OH	99.1	97.1	26,450	25,629	267	265
OK	406.4	400.7	107,814	107,670	265	269
OR	18.5	14.5	4,234	3,502	230	243
PA	248.0	243.9	61,916	61,707	250	253
SC						
SD	454.6	343.8	114,393	85,823	252	250
TN	57.6	51.5	27,041	24,223	470	471
TX	35.3	34.8	8,622	8,182	245	235
UT	6.5	6.3	1,299	1,288	199	205
VA	196.9	184.9	50,055	48,242	254	261
WA	2.4	2.4	465	458	198	191
WV	0.9	0.9	235	234	267	259
WI	52.8	57.6	22,907	25,018	441	441
WY	1.4	1.2	364	317	258	258
US ³	9,394.5	9,267.6	2,470,996	2,415,430	263	261

¹ Includes slaughter under Federal inspection and other Commercial slaughter, excludes farm slaughter.

² N ENG includes CT, ME, MA, NH, RI, and VT.

³ States with no data printed are still included in the US total, data not printed to avoid disclosing individual operations. Accumulated totals and percentages based on unrounded data.

**Commercial Sheep and Lamb Slaughter: By State and United States,
August 2007 and 2008¹**

State	Number Slaughtered		Total Live Weight		Average Live Weight	
	2007	2008	2007	2008	2007	2008
	<i>1,000 Head</i>	<i>1,000 Head</i>	<i>1,000 Pounds</i>	<i>1,000 Pounds</i>	<i>Pounds</i>	<i>Pounds</i>
AL						
AK						
AZ		0.1		5		76
AR	0.1	0.1	6	5	91	95
CA						
CO	79.8	65.4	11,231	9,855	141	151
DE-MD	3.2	3.9	321	374	102	97
FL	0.3	0.3	20	17	69	57
GA	0.5	0.3	68	27	146	86
HI						
ID	0.7	0.6	83	79	127	126
IL						
IN	2.6	2.5	275	266	107	107
IA	37.0	31.4	5,086	4,397	138	140
KS	0.3	0.3	40	38	115	120
KY	1.0	1.1	133	143	128	126
LA	0.4	0.4	27	25	74	64
MI	19.1	16.6	2,392	2,072	126	125
MN	0.4	1.2	53	148	136	126
MS						
MO	0.6	0.6	64	65	110	117
MT	0.4	0.5	60	62	143	128
NE		0.1		15		135
NV	0.2	0.1	27	17	128	121
N ENG ²	2.4	2.2	223	197	94	90
NJ	10.0	10.7	828	896	83	84
NM	1.2	1.0	166	128	142	133
NY	3.3	2.9	290	259	88	89
NC	0.7	0.9	59	74	86	80
ND	0.1	0.1	12	5	110	103
OH	1.9	1.7	202	180	107	106
OK	0.1	0.1	15	10	99	102
OR	2.3	2.3	309	308	133	131
PA	4.8	4.7	472	487	98	103
SC						
SD	1.2	0.3	143	31	116	123
TN	1.2	1.2	93	89	75	78
TX	2.5	3.0	275	281	108	93
UT	3.5	3.3	471	449	135	137
VA	1.2	1.2	123	119	100	100
WA	0.7	0.6	104	88	141	159
WV	0.1	0.4	10	60	111	139
WI	1.6	1.5	199	213	127	139
WY	0.4	0.4	53	52	139	139
US ³	228.1	200.7	29,314	26,507	129	132

¹ Includes slaughter under Federal inspection and other Commercial slaughter, excludes farm slaughter.

² N ENG includes CT, ME, MA, NH, RI, and VT.

³ States with no data printed are still included in the US total, data not printed to avoid disclosing individual operations. Accumulated totals and percentages based on unrounded data.

**Classification of Livestock Slaughtered Under Federal Inspection:
United States**

Item	Aug 2007	Jul 2008	Aug 2008	Jan - Aug ¹		Aug 2007	Jul 2008	Aug 2008	Jan - Aug ¹	
	1,000 Head	1,000 Head	1,000 Head	1,000 Head	1,000 Head	Percent of Total	Percent of Total	Percent of Total	Percent of Total	Percent of Total
Class ²										
Cattle										
Steers	1,646	1,580	1,449	11,825	11,722	53.3	52.4	50.6	52.2	51.1
Heifers	924	861	836	6,782	6,784	29.9	28.5	29.2	29.9	29.6
All Cows	465	520	521	3,692	4,020	15.1	17.2	18.2	16.3	17.5
Dairy Cows	212	209	226	1,631	1,695	6.9	6.9	7.9	7.2	7.4
Other Cows	254	311	295	2,062	2,325	8.2	10.3	10.3	9.1	10.1
Bulls	52	57	59	364	406	1.7	1.9	2.1	1.6	1.8
Total ¹	3,088	3,017	2,866	22,664	22,932	100.0	100.0	100.0	100.0	100.0
Calves & Vealers	65	87	78	509	589	100.0	100.0	100.0	100.0	100.0
Hogs										
Barrow & Gilts	8,960	9,025	8,845	66,824	72,894	96.4	96.3	96.4	96.4	96.4
Sows	293	305	286	2,187	2,375	3.2	3.3	3.1	3.2	3.1
Boars	42	43	40	323	318	0.5	0.5	0.4	0.5	0.4
Total ¹	9,296	9,373	9,170	69,335	75,586	100.0	100.0	100.0	100.0	100.0
Sheep										
Mature Sheep	10	11	11	75	81	4.8	5.5	5.7	4.5	5.1
Lambs & Yrlngs	202	183	176	1,590	1,504	95.2	94.5	94.3	95.5	94.9
Total ¹	212	193	186	1,665	1,585	100.0	100.0	100.0	100.0	100.0
Average Dressed Weight										
	<i>Pounds</i>	<i>Pounds</i>	<i>Pounds</i>	<i>Pounds</i>	<i>Pounds</i>					
Cattle										
Steers ³	787	779	784	769	773					
Heifers ³	845	840	850	819	829					
All Cows ³	766	764	774	752	762					
Bulls ³	608	600	600	622	614					
Bulls ³	890	897	892	906	894					
Calves & Vealers	159	141	143	187	155					
Hogs										
Barrow Gilts ⁴	197	196	195	201	201					
Sows ⁴	194	192	192	197	197					
Sows ⁴	306	308	306	308	308					
Boars ⁴	213	205	203	214	209					
Sheep										
Mature Sheep ⁵	66	67	67	70	70					
Mature Sheep ⁵	68	66	67	67	67					
Lamb & Yrlngs ⁵	66	67	67	70	70					

¹ Total and percentages based on unrounded data.

² Species totals and classification reported by food inspectors, Inspection Operations, FSIS.

³ Included in cattle average dressed weight.

⁴ Included in hog average dressed weight.

⁵ Included in sheep average dressed weight.

**Federally Inspected Slaughter: By Region and United States,
August 2008 ¹**

Standard Federal Regions	Cattle							Calves
	Total ²	Steers	Heifers	Cows			Bulls	Total
				All	Dairy	Other		
	<i>1,000 Head</i>	<i>1,000 Head</i>	<i>1,000 Head</i>	<i>1,000 Head</i>	<i>1,000 Head</i>	<i>1,000 Head</i>	<i>1,000 Head</i>	<i>1,000 Head</i>
1	0.9	0.4	0.1					0.2
2	4.9	2.0	0.2	2.4	2.2	0.2	0.3	23.2
3	88.2	33.3	7.2	45.5	36.0	9.5	2.1	13.6
4	76.1	1.0	0.4	63.4	11.2	52.3	11.3	0.4
5	348.4	155.4	44.3	137.1	70.5	66.6	11.6	19.9
6	570.7	299.4	173.0	86.9	16.2	70.7	11.5	3.1
7	1,212.9	680.0	463.8	58.9	2.0	56.9	10.2	0.1
8	278.2	158.2	101.7					
9	171.3	76.3	14.1	77.2	66.5	10.7	3.7	16.8
10	113.8	43.6	31.3	33.7	15.1	18.6	5.3	
US ²	2,865.5	1,449.4	836.2	520.9	226.3	294.5	59.0	78.1
	Hogs				Sheep			
	Total ²	Barrows & Gilts	Sows	Boars	Total ²	Mature Sheep	Lambs & Yearlings	
	<i>1,000 Head</i>	<i>1,000 Head</i>	<i>1,000 Head</i>	<i>1,000 Head</i>	<i>1,000 Head</i>	<i>1,000 Head</i>	<i>1,000 Head</i>	
1	1.7	1.6			1.9	0.2	1.8	
2	11.1	10.8	0.1	0.1	12.9	1.3	11.5	
3	428.8	412.5	2.7	13.6	9.9	0.8	9.1	
4	1,340.0	1,268.7	69.9	1.4	3.9	1.1	2.8	
5	2,410.6	2,286.5	120.6	3.5	28.1	3.1	25.1	
6	444.7	419.7	24.9	0.1				
7	3,921.5	3,833.5	67.0	20.9	31.9	0.5	31.4	
8	357.4	356.9	0.5		68.0	1.5	66.5	
9	227.3	227.2						
10	27.3	27.2	0.1		2.7	0.1	2.6	
US ²	9,170.3	8,844.6	286.1	39.7	186.1	10.5	175.6	

¹ States included in regions are as follows: 1- CT, ME, NH, VT, MA, & RI; 2- NY & NJ; 3- DE-MD, PA, WV, & VA; 4- AL, FL, GA, KY, MS, NC, SC, & TN; 5- IL, IN, MI, MN, OH, & WI; 6- AR, LA, NM, OK, & TX; 7- IA, KS, MO, & NE; 8- CO, MT, ND, SD, UT, & WY; 9- AZ, CA, HI & NV; 10- AK, ID, OR, & WA.

² Regions with no data printed are still included in the US and Region total, data not printed to avoid disclosing individual operations. Totals may not add due to rounding.

**Federally Inspected Slaughter: By Region and United States,
January - August 2008¹**

Standard Federal Regions	Cattle							Calves
	Total ²	Steers	Heifers	Cows			Bulls	Total
				All	Dairy	Other		
	<i>1,000 Head</i>	<i>1,000 Head</i>	<i>1,000 Head</i>	<i>1,000 Head</i>	<i>1,000 Head</i>	<i>1,000 Head</i>	<i>1,000 Head</i>	<i>1,000 Head</i>
1	7.2	3.1	1.3					1.5
2	37.0	12.4	2.3	19.6	16.3	3.2	2.8	181.0
3	678.9	282.1	63.9	316.0	251.0	65.0	17.0	105.0
4	575.9	9.9	3.5	485.4	91.7	393.6	77.2	2.7
5	2,717.1	1,204.2	340.3	1,097.9	560.5	537.5	74.6	145.4
6	4,605.1	2,449.0	1,407.4	656.1	116.7	539.4	92.7	19.2
7	9,721.5	5,464.1	3,688.5	503.2	12.3	490.9	65.8	0.5
8	2,283.7	1,209.3	922.2					
9	1,404.3	720.5	96.6	563.7	489.2	74.5	23.5	125.6
10	901.2	367.5	257.8	241.5	109.1	132.4	34.5	
US ²	22,931.9	11,722.1	6,783.6	4,019.9	1,694.5	2,325.4	406.2	589.5
	Hogs				Sheep			
	Total ²	Barrows & Gilts	Sows	Boars	Total ²	Mature Sheep	Lambs & Yearlings	
	<i>1,000 Head</i>	<i>1,000 Head</i>	<i>1,000 Head</i>	<i>1,000 Head</i>	<i>1,000 Head</i>	<i>1,000 Head</i>	<i>1,000 Head</i>	
1	9.5	9.1			15.5	1.0	14.6	
2	87.7	85.5	1.2	0.9	110.7	11.1	99.6	
3	3,611.8	3,491.2	20.3	100.3	69.9	3.8	66.1	
4	10,868.0	10,298.0	556.3	13.7	26.0	8.4	17.7	
5	19,998.7	18,938.4	1,032.4	27.8	240.9	25.5	215.4	
6	3,797.3	3,596.3	193.9	7.1				
7	32,030.7	31,300.9	562.6	167.3	227.3	3.4	223.9	
8	3,232.1	3,226.1	5.9	0.1	653.9	12.7	641.2	
9	1,717.6	1,716.7						
10	232.3	231.4	0.9	0.1	18.1	1.0	17.1	
US ²	75,585.6	72,893.6	2,374.5	317.5	1,584.6	81.0	1,503.6	

¹ States included in regions are as follows: 1- CT, ME, NH, VT, MA, & RI; 2- NY & NJ; 3- DE-MD, PA, WV, & VA; 4- AL, FL, GA, KY, MS, NC, SC, & TN; 5- IL, IN, MI, MN, OH, & WI; 6- AR, LA, NM, OK, & TX; 7- IA, KS, MO, & NE; 8- CO, MT, ND, SD, UT, & WY; 9- AZ, CA, HI & NV; 10- AK, ID, OR, & WA.

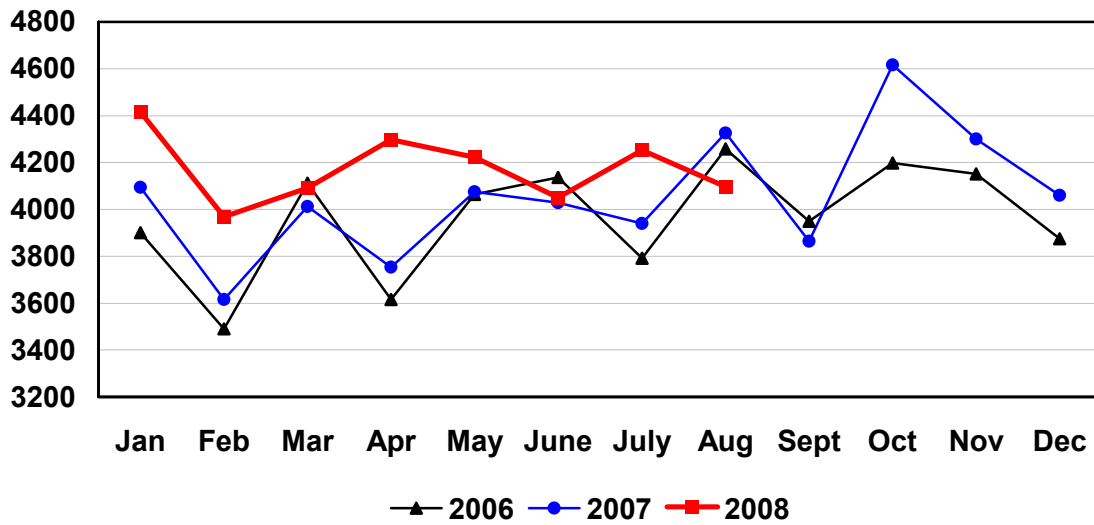
² Regions with no data printed are still included in the US and Region total, data not printed to avoid disclosing individual operations. Totals may not add due to rounding.

Federally Inspected Slaughter: Percent of Total Commercial Slaughter by Species, United States

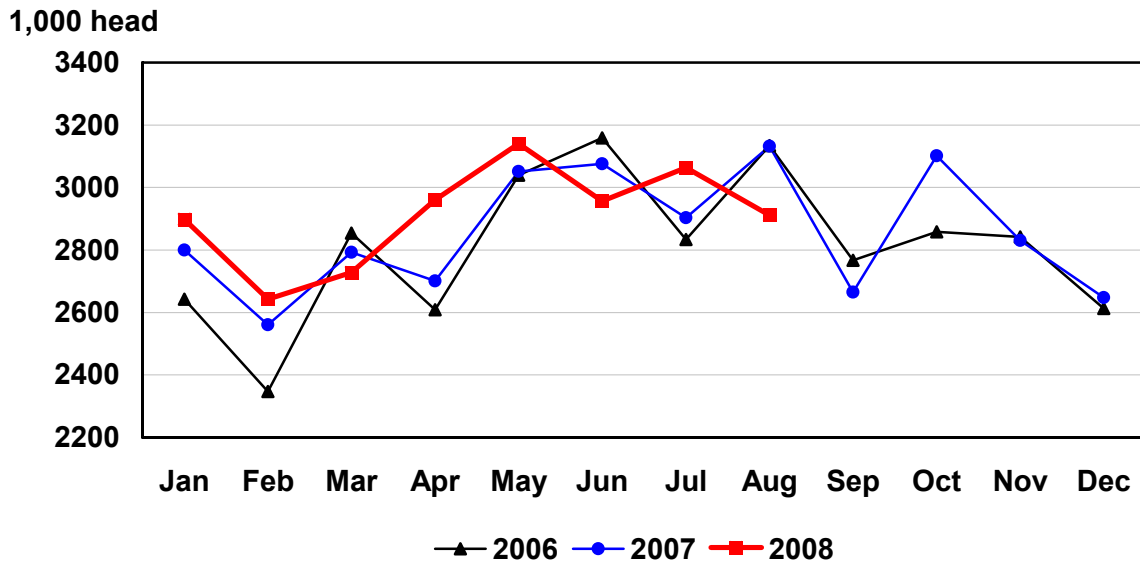
Species	Aug 2007	Jul 2008	Aug 2008	Jan - Aug	
				2007	2008
	<i>Percent</i>	<i>Percent</i>	<i>Percent</i>	<i>Percent</i>	<i>Percent</i>
Cattle	98.6	98.5	98.4	98.5	98.4
Calves	98.6	98.7	98.5	98.5	98.5
Hogs	98.9	99.0	99.0	99.0	99.1
Sheep	92.9	92.9	92.7	94.1	94.0

U.S. Monthly Commercial Red Meat Production

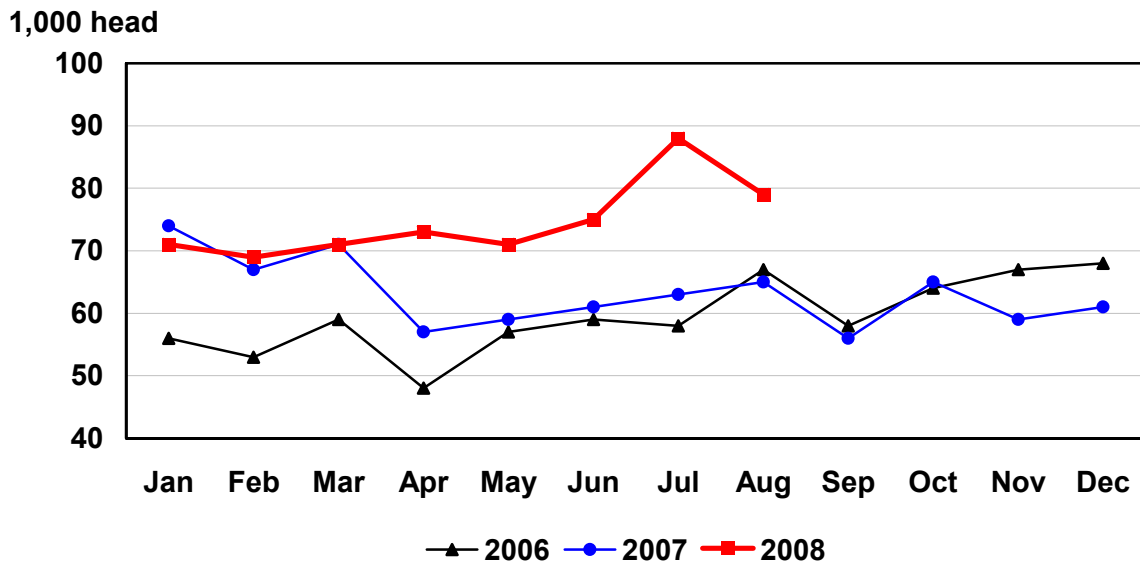
Million Pounds



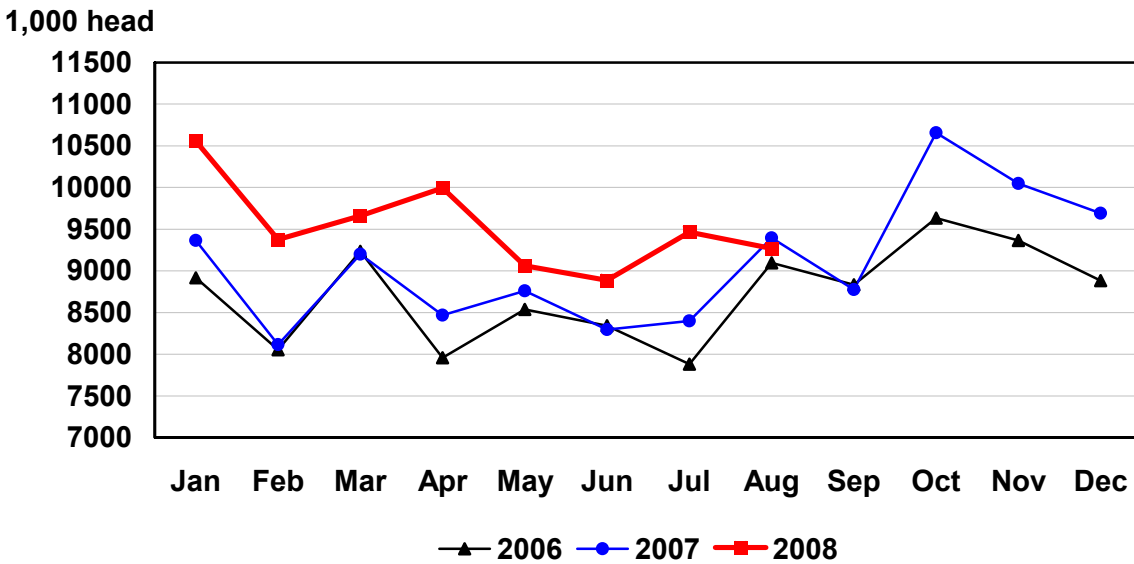
U.S. Monthly Commercial Slaughter Cattle



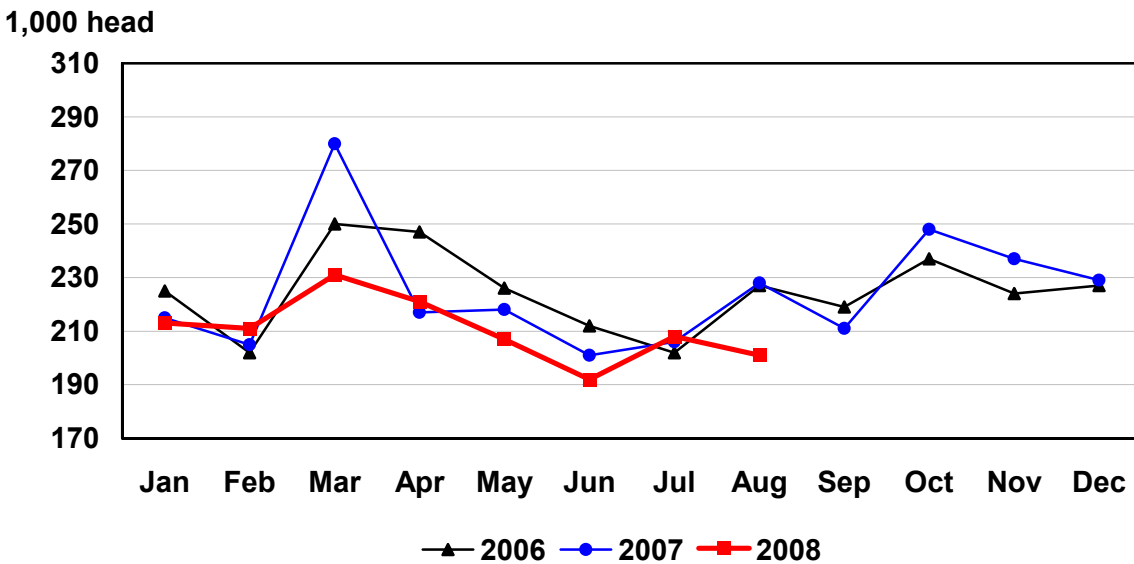
U.S. Monthly Commercial Slaughter Calves



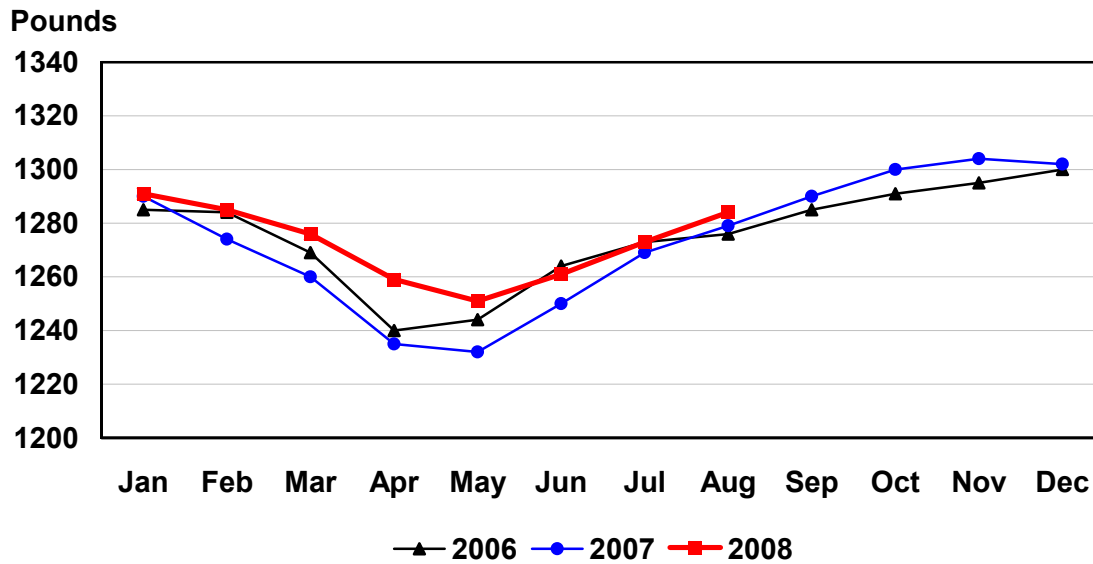
U.S. Monthly Commercial Slaughter Hogs



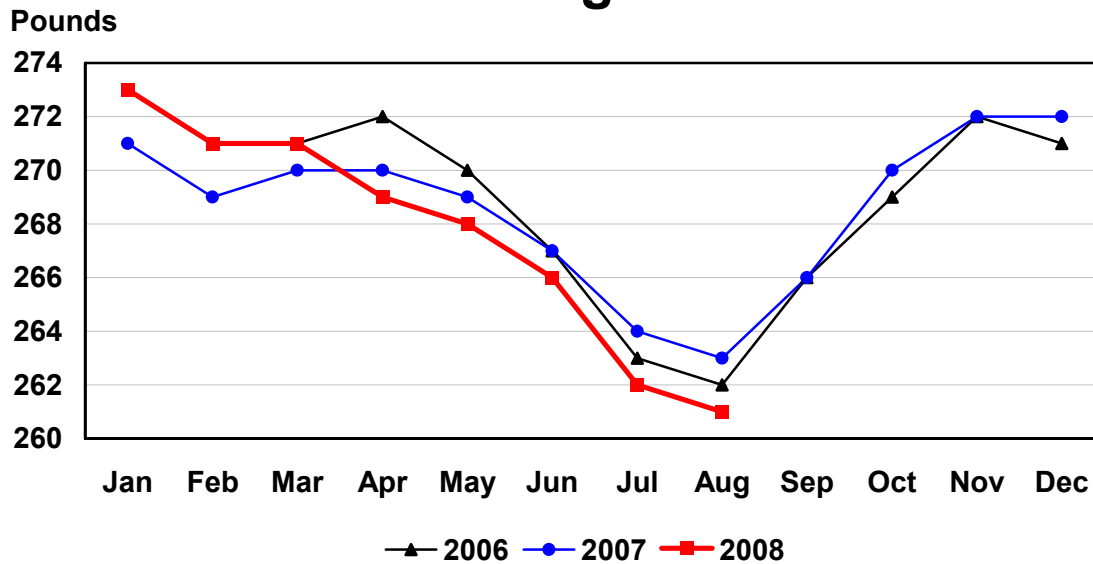
U.S. Monthly Commercial Slaughter Sheep



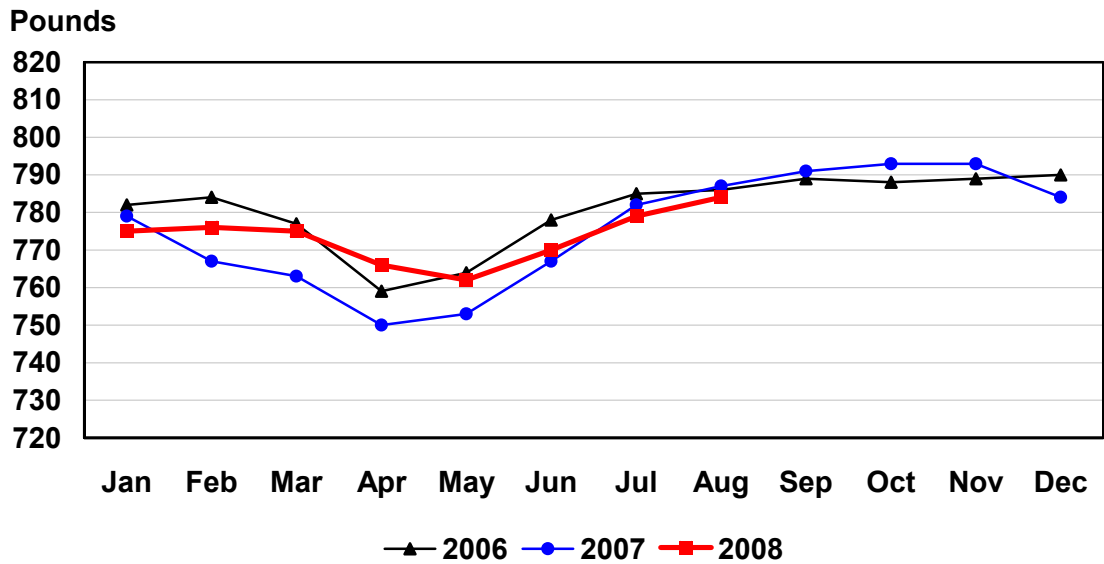
U.S. Monthly Commercial Slaughter Average Live Weight Cattle



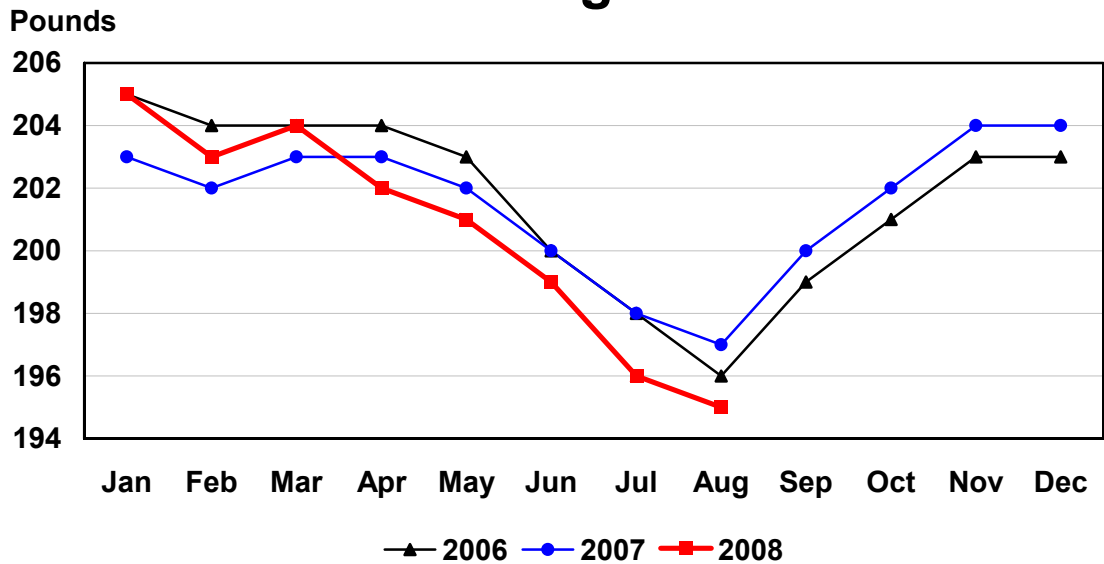
U.S. Monthly Commercial Slaughter Average Live Weight Hogs



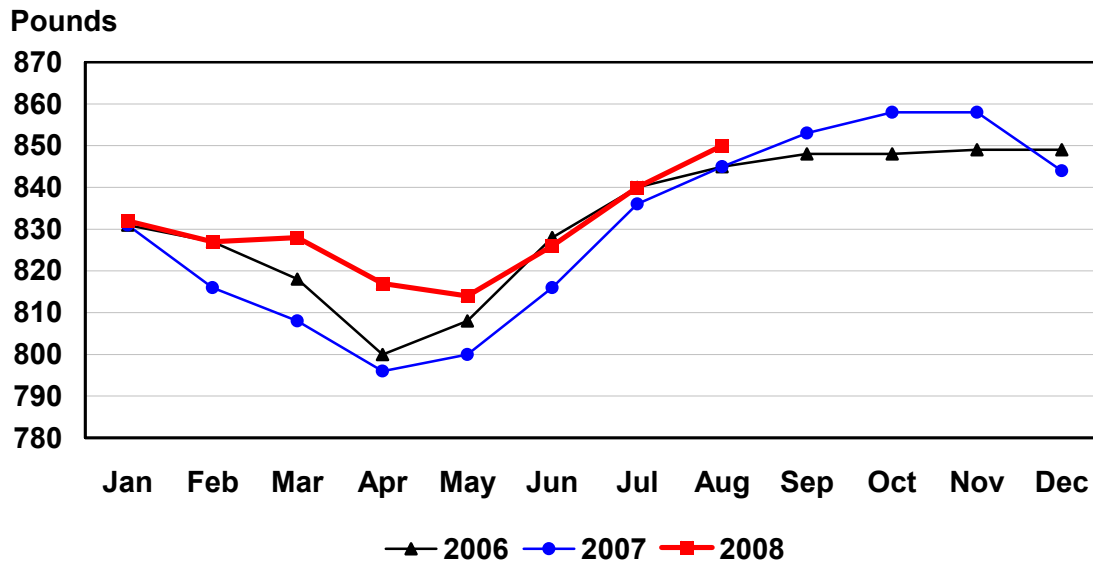
U.S. Monthly Federally Inspected Average Dressed Weight Cattle



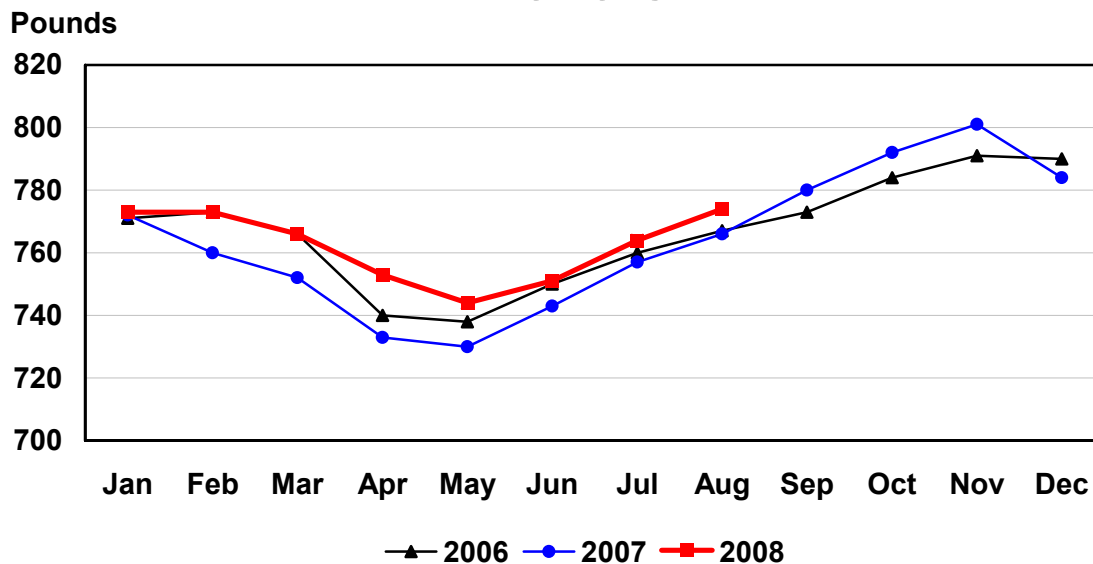
U.S. Monthly Federally Inspected Average Dressed Weight Hogs



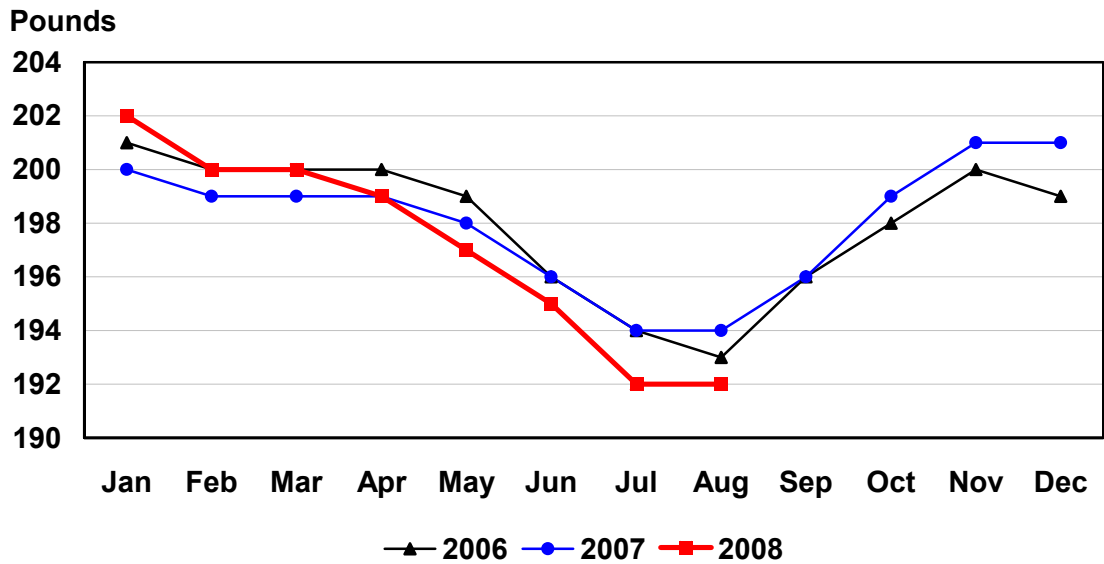
U.S. Monthly Federally Inspected Average Dressed Weight Steers



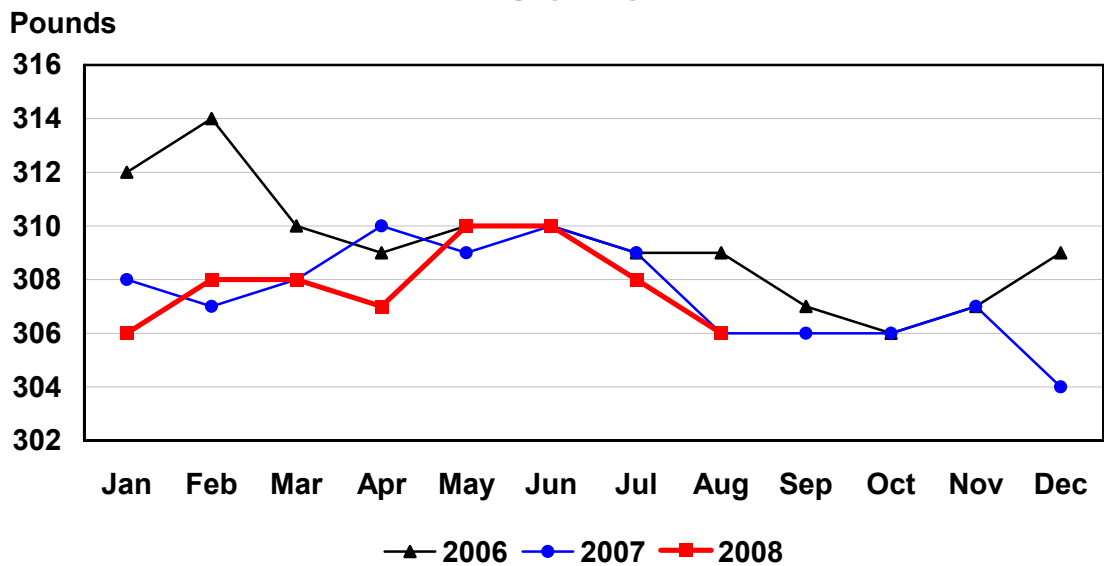
U.S. Monthly Federally Inspected Average Dressed Weight Heifers



U.S. Monthly Federally Inspected Average Dressed Weight Barrows and Gilts



U.S. Monthly Federally Inspected Average Dressed Weight Sows



Reliability of Livestock Slaughter Estimates

Data Sources: Primary data for the commercial livestock slaughter estimates are obtained from electronic reports completed by inspectors from the Food Safety and Inspection Service (FSIS), USDA, which provide daily counts of animals slaughtered in Federally Inspected (FI) plants, in addition to total live and dressed weights. These counts are combined with data from State-administered Non-Federally Inspected (NFI) slaughter plants to derive total commercial slaughter estimates. More than 95 percent of the total U.S. slaughter for any species is under Federal Inspection.

There are nearly 800 livestock slaughter plants in the U.S. operating under Federal Inspection and over 2,000 Non-Federally Inspected (State-inspected or custom-exempt) slaughter plants. Slaughter from State-inspected Talmedge-Aiken plants is included in FI totals (see Types of Plants, page 20). To prevent duplication in reporting between FI and NFI plants and assure all FI plants are included, certificates prepared by FSIS identifying operating status are constantly monitored

Revision Policy: Number of head slaughtered, live weights, and dressed weights are subject to revision the following month after the monthly release. Annual totals are published in the slaughter summary each March which includes any revisions made to current and previous year's published data. Revisions are generally the result of late reports received from slaughter plants and are usually less than one-half of one percent. No revisions will be made to the previous year's data after the publication of the annual summary in March.

Procedures and Reliability: The livestock slaughter data is obtained electronically on a daily basis and summarized approximately two weeks after the week of slaughter. An edit compares each plant's data with the historical data for that plant. Data are checked for unusual values for head kill, patterns of kill, average weights, and dressing percent, based on each plant's past operating profile. In addition, the edit provides a listing of missing reports for follow-up contact with FSIS. Average live and dressed weights and dressing percentages by State are compared with the previous weeks as an additional check. Fluctuations are frequently the result of plants permanently or temporarily closing and a shift in the species reported.

The FSIS District Veterinary Medical Specialists (DVMS) are contacted by e-mail or telephone for missing or potentially erroneous slaughter data. This assures that plants slaughtering a large number of head or several species are accounted for each week. Any corrections FSIS makes to the slaughter data are included in the summary.

Imputation may be necessary for incomplete reports. The imputation of live and dressed weights is based on the current week reported data of plants of similar size and location. Imputation for live and dressed weight data for cattle and hogs is less than 10 percent and 7 percent, respectively. The imputation for calves and sheep is more frequent and variable. If no data is received electronically or by other means, for plants slaughtering fewer than 50 total head weekly of only one species, data are imputed. The imputation of head for any plant is based on the historical data for that particular plant. The imputation of head slaughtered is rare but when necessary, the imputed head kill for missing plants usually is less than 1 percent of the U.S. head kill totals.

FI data are summarized weekly and accumulated to a monthly total for this release. These weekly totals are published by USDA's Agricultural Marketing Service (AMS) in **Livestock, Meat, Wool Market News**, Weekly Summary, and Statistics and are also available on the NASS website. NFI data are summarized monthly only.

Livestock slaughter estimates are based on a census of operating plants and therefore, have no sampling error. However, they may be subject to errors such as omissions, duplications and mistakes in reporting, recording and processing the data. These errors are minimized through rigid quality controls in the edit and summarization process, and a careful review of all reported data for consistency and reasonableness.

No data are published when an individual plant's data could be divulged. If not published, these data are still included in US and region totals. A review of the data is made annually to determine the publishable data.

Types of Livestock Slaughter Plants

There are generally **four types** of slaughtering plants.

- (1) **Federally Inspected (FI) Plants:** Plants that transport meat interstate must employ federal inspectors to assure compliance with USDA standards. Any State whose commercial plants operate entirely under federal inspection may still have custom-exempt establishments for which NFI estimates are made.
- (2) **Talmedge-Aiken (TA) Plants:** Slaughter plants in which USDA is responsible for inspection. However, federal inspection is carried out by State employees. These plants are considered to be federally inspected.
- (3) **Non-Federally Inspected (NFI) Plants:** Plants which sell and transport only intrastate. State inspectors assure compliance with individual State standards for these NFI plants. Mobile slaughtering units are excluded and are considered farm slaughter.
- (4) **Custom-Exempt Plants:** Plants that do not sell meat but operate on a custom basis only are custom-exempt. The animals and meat are not inspected, but the facilities must meet health standards. These are considered NFI plants and head kill is included in NFI totals.

Terms and Definitions Used for Livestock Slaughter Estimates

Average Live Weight: Excludes post-mortem condemnations

Commercial Production: Includes slaughter and meat production in federally inspected and other plants, but excludes animals slaughtered on farms.

Dressed Weight: The weight of a chilled animal carcass. Beef with kidney knob in; veal with hide off; lamb and mutton with pluck out; pork with leaf fat and kidneys out, jowls on and head off.

Dressing Percent: Usually expressed as a percentage yield of chilled carcass in relation to the weight of the live animal on hoof. For example, a live hog that weighed 200 pounds on hoof and yielded a carcass weighing 140 pounds would have a dressing percentage of 70.

Food and Meat Inspection: Includes examination, checking, or testing of a carcass and/or meat against established government standards and involves checking the facility for cleanliness, health of animals, or parts of animals and quality of the meat produced.

Number of Head: Includes post-mortem condemnations.

Plant, Slaughter: An establishment where animals are killed and butchered.

Red Meat: Red meat production is the carcass weight after slaughter excluding condemnation and is comprised of beef, veal, pork, and lamb and mutton. The FI red meat production is equal to the total carcass weight after slaughter. The NFI meat production formula is (NFI head kill) X (live weight) X (FI dressing percentage) = NFI red meat production.

Slaughter: Killing and butchering of animals primarily for food.

Slaughter, Farm: Animals slaughtered on farms primarily for home consumption. Excludes custom slaughter for farmers at commercial establishments, but includes mobile slaughtering on farms. These estimates appear only in the annual slaughter release.

Total Live Weight: Excludes post-mortem condemnations.

Wholesome Meat Act: Legislation that specifies that all meat produced for sale in the U.S. must be inspected. Meat that is transported interstate must be inspected in compliance with Federal (USDA) Standards.

Information Contacts

Listed below are the commodity specialists in the Livestock Branch of the National Agricultural Statistics Service to contact for additional information.

Dan Kerestes, Chief, Livestock Branch.....	(202) 720-3570
Scott Hollis, Head, Livestock Section.....	(202) 690-2424
Jim Collom – Dairy Products.....	(202) 690-3236
Joe Gaynor – Dairy Products Prices.....	(202) 690-2168
Jason Hardegree – Cattle, Cattle on Feed.....	(202) 720-3040
Benita Hodge – Livestock Slaughter.....	(515) 284-4340
Mike Miller – Milk Production and Milk Cows.....	(202) 720-3278
Everett Olbert – Sheep and Goats.....	(202) 720-4751
Nicholas Streff – Hogs and Pigs.....	(202) 720-3106

ACCESS TO REPORTS!!

For your convenience, there are several ways to obtain NASS reports, data products, and services:

INTERNET ACCESS

All NASS reports are available free of charge on the worldwide Internet. For access, connect to the Internet and go to the NASS Home Page at: www.nass.usda.gov.

E-MAIL SUBSCRIPTION

All NASS reports are available by subscription free of charge direct to your e-mail address. Starting with the NASS Home Page at www.nass.usda.gov, under the right navigation, *Receive reports by Email*, click on **National** or **State**. Follow the instructions on the screen.

PRINTED REPORTS OR DATA PRODUCTS

CALL OUR TOLL-FREE ORDER DESK: 800-999-6779 (U.S. and Canada)
Other areas, please call 703-605-6220 FAX: 703-605-6900
(Visa, MasterCard, check, or money order acceptable for payment.)

ASSISTANCE

For **assistance** with general agricultural statistics or further information about NASS or its products or services, contact the **Agricultural Statistics Hotline** at **800-727-9540**, 7:30 a.m. to 4:00 p.m. ET, or e-mail: nass@nass.usda.gov.

The U.S. Department of Agriculture (USDA) prohibits discrimination in all its programs and activities on the basis of race, color, national origin, age, disability, and where applicable, sex, marital status, familial status, parental status, religion, sexual orientation, genetic information, political beliefs, reprisal, or because all or part of an individual's income is derived from any public assistance program. (Not all prohibited bases apply to all programs.) Persons with disabilities who require alternative means for communication of program information (Braille, large print, audiotope, etc.) should contact USDA's TARGET Center at (202) 720-2600 (voice and TDD).

To file a complaint of discrimination, write to USDA, Director, Office of Civil Rights, 1400 Independence Avenue, S.W., Washington, D.C. 20250-9410, or call (800) 795-3272 (voice) or (202) 720-6382 (TDD). USDA is an equal opportunity provider and employer.

USDA Data Users' Meeting

October 20, 2008

Doubletree Hotel Chicago O'Hare Airport-Rosemont

Rosemont, Illinois

(847) 292-9100

The USDA's National Agricultural Statistics Service will be organizing an open forum for data users. The purpose will be to provide updates on pending changes in the various statistical and information programs and seek comments and input from data users. Other USDA agencies to be represented will include the Agricultural Marketing Service, the Economic Research Service, the Foreign Agricultural Service, and World Agricultural Outlook Board. The Foreign Trade Division from the Census Bureau will also be included in the meeting.

For registration details or additional information for the Data Users' Meeting, see the NASS homepage at www.nass.usda.gov/forum/ or contact Marjorie Taylor (NASS) at (202) 690-8141 or at marjorie_taylor@nass.usda.gov.

This Data Users' Meeting precedes an Industry Outlook meeting that will be held at the same location on October 21, 2008. The Outlook meeting brings together analysts from various commodity sectors to discuss the outlook situation. For registration details or additional information for the Industry Outlook Meeting see the Livestock and Marketing Information Center (LMIC) homepage at www.lmic.info or contact Jim Robb at (720) 544-2941 or at robb@lmic.info.