
Released October 24, 2008, by the National Agricultural Statistics Service (NASS), Agricultural Statistics Board, U.S. Department of Agriculture. For information on *Livestock Slaughter* call Benita Hodge at (515) 284-4340, office hours 7:00 a.m. to 4:00 p.m. CT.

Total Red Meat Production at Record High for September

Commercial red meat production for the United States totaled 4.27 billion pounds in September, up 11 percent from the 3.86 billion pounds produced in September 2007.

Beef production, at 2.27 billion pounds, was 8 percent above the previous year. Cattle slaughter totaled 2.89 million head, up 8 percent from September 2007. The average live weight was up 8 pounds from the previous year, at 1,298 pounds.

Veal production totaled 12.8 million pounds, 37 percent above September a year ago. Calf slaughter totaled 87,500 head, up 56 percent from September 2007. The average live weight was down 33 pounds from last year, at 251 pounds.

Pork production totaled 1.97 billion pounds, up 13 percent from the previous year. Hog kill totaled 9.96 million head, up 14 percent from September 2007. The average live weight was unchanged from the previous year, at 266 pounds.

Lamb and mutton production, at 14.4 million pounds, was up 6 percent from September 2007. Sheep slaughter totaled 221,000 head, 5 percent above last year. The average live weight was 129 pounds, up 1 pound from September a year ago.

January to September 2008 commercial red meat production was 37.7 billion pounds, up 5 percent from 2007. Accumulated beef production was up 3 percent from last year, veal was down 1 percent, pork was up 9 percent from last year, and lamb and mutton production was down 3 percent.

September 2007 contained 20 weekdays (including one holiday) and 5 Saturdays.

September 2008 contained 22 weekdays (including one holiday) and 4 Saturdays.

Contents

	Page
Red Meat Production, Commercial and FI, by Type, U.S.	1
Livestock Slaughter, Number and Average Weights, by Species and Type of Slaughter, U.S.	2
Commercial Red Meat Production, by State and U.S.	3
Commercial Cattle Slaughter, Number, Total and Average Live Weight, by State and U.S.	4
Commercial Calf Slaughter, Number, Total and Average Live Weight, by State and U.S.	5
Commercial Hog Slaughter, Number, Total and Average Live Weight, by State and U.S.	6
Commercial Sheep and Lamb Slaughter, Number, Total and Average Live Weight, by State and U.S.	7
Federally Inspected Classification of Number and Average Dressed Weight, by Species and Class and U.S.	8
Federally Inspected Slaughter by Species and Class, by Region and U.S.	9
Federally Inspected Percent of Total Commercial, by Species, U.S.	11
Reliability Statement.....	18
Types of Plants.....	19
Terms and Definitions	20
Information Contacts	20

Commercial Red Meat Production: United States ¹

Type	Sep 2007	Aug 2008	Sep 2008	Sep 08 % of		Jan - Sep ²		
				Sep 2007	Aug 2008	2007	2008	08 as % of 07
	<i>Million Pounds</i>	<i>Million Pounds</i>	<i>Million Pounds</i>	<i>Percent</i>	<i>Percent</i>	<i>Million Pounds</i>	<i>Million Pounds</i>	<i>Percent</i>
Beef	2,094.7	2,268.5	2,269.8	108	100	19,687.0	20,179.6	103
Veal	9.4	11.2	12.8	137	114	105.7	105.1	99
Pork	1,746.0	1,804.4	1,973.5	113	109	15,779.7	17,247.3	109
Lamb & Mutton	13.6	13.3	14.4	106	108	135.2	130.6	97
Total Red Meat ³	3,863.6	4,097.4	4,270.4	111	104	35,707.6	37,662.5	105

¹ Based on packers' dressed weights and excludes farm slaughter.

² Accumulated totals and percentages based on unrounded data.

³ Totals may not equal sum of the parts due to rounding.

Federally Inspected Red Meat Production: United States ¹

Type	Sep 2007	Aug 2008	Sep 2008	Sep 08 % of		Jan - Sep ²		
				Sep 2007	Aug 2008	2007	2008	08 as % of 07
	<i>Million Pounds</i>	<i>Million Pounds</i>	<i>Million Pounds</i>	<i>Percent</i>	<i>Percent</i>	<i>Million Pounds</i>	<i>Million Pounds</i>	<i>Percent</i>
Beef	2,066.7	2,238.8	2,239.2	108	100	19,428.4	19,910.3	102
Veal	9.1	11.0	12.5	137	114	103.7	102.7	99
Pork	1,731.1	1,787.9	1,958.0	113	110	15,652.0	17,113.4	109
Lamb & Mutton	12.9	12.5	13.6	106	109	129.2	124.7	97
Total Red Meat ³	3,819.7	4,050.2	4,223.3	111	104	35,313.3	37,251.2	105

¹ Based on packers' dressed weights and excludes farm slaughter.

² Accumulated totals and percentages based on unrounded data.

³ Totals may not equal sum of the parts due to rounding.

Livestock Slaughter: Number and Average Weights, United States ¹

Species	Unit	Sep 2007	Aug 2008	Sep 2008	Sep 08 % of		Jan - Sep ²		
					Sep 2007	Aug 2008	2007	2008	08 % of 07
					<i>Percent</i>	<i>Percent</i>			
Cattle No.									
Fed. Insp.	Thou	2,621.2	2,865.5	2,841.9	108	99	25,285.1	25,773.8	102
Other	Thou	43.4	45.4	47.1	109	104	398.4	414.5	104
Comm'l. ³	Thou	2,664.6	2,910.9	2,889.0	108	99	25,683.5	26,188.4	102
Live Wt/Hd									
Fed. Insp.	Lbs	1,292	1,286	1,300	101	101	1,266	1,277	101
Other	Lbs	1,138	1,149	1,149	101	100	1,143	1,146	100
Comm'l.	Lbs	1,290	1,284	1,298	101	101	1,264	1,275	101
Calves No.									
Fed. Insp.	Thou	54.8	78.1	86.1	157	110	563.7	675.6	120
Other	Thou	1.2	1.2	1.4	124	124	9.1	10.5	115
Comm'l. ³	Thou	56.0	79.2	87.5	156	110	572.8	686.0	120
Live Wt/Hd									
Fed. Insp.	Lbs	281	243	248	88	102	309	261	84
Other	Lbs	390	408	427	109	105	395	406	103
Comm'l.	Lbs	284	245	251	89	102	311	263	85
Hogs No.									
Fed. Insp.	Thou	8,683.4	*9,170.4	9,867.7	114	108	78,018.0	85,453.4	110
Other	Thou	89.4	97.3	90.9	102	93	757.9	777.2	103
Comm'l. ³	Thou	8,772.8	9,267.6	9,958.6	114	107	78,775.9	86,230.6	109
Live Wt/Hd									
Fed. Insp.	Lbs	267	261	266	100	102	268	268	100
Other	Lbs	233	236	236	102	100	233	238	102
Comm'l.	Lbs	266	261	266	100	102	268	267	100
Sheep&Lambs No.									
Fed. Insp.	Thou	196.7	186.1	206.9	105	111	1,861.6	1,791.6	96
Other	Thou	14.0	14.7	14.0	100	96	118.0	114.3	97
Comm'l. ³	Thou	210.7	200.7	221.0	105	110	1,979.6	1,905.9	96
Live Wt/Hd									
Fed. Insp.	Lbs	130	134	131	101	98	138	139	101
Other	Lbs	106	107	103	97	96	104	105	101
Comm'l.	Lbs	128	132	129	101	98	136	137	101
Goats No.									
Fed. Insp.	Thou	54.2	58.2	63.2	117	109	460.9	489.2	106
Other	Thou	16.6	16.9	16.6	100	98	138.9	140.5	101
Comm'l. ³	Thou	70.9	75.1	79.9	113	106	599.8	629.7	105
Live Wt/Hd									
Fed. Insp.	Lbs	61	62	61	100	99	61	62	101
Other	Lbs	48	56	76	159	135	57	63	111
Comm'l.	Lbs	58	61	64	110	106	60	62	103
Bison No.									
Fed. Insp.	Thou	4.4	3.8	4.4	101	118	38.5	42.2	110
Other	Thou	1.0	1.1	1.1	116	101	12.4	11.6	93
Comm'l. ³	Thou	5.4	4.9	5.5	104	114	51.0	53.9	106

* Revised.

¹ Excludes slaughter on farms.

² Accumulated totals and percentages based on unrounded data.

³ Totals may not equal sum of the parts due to rounding.

Commercial Red Meat Production: By State and United States ¹

State	Sep 2007	Aug 2008	Sep 2008	Sep 08 as % of ²	
				Sep 2007	Aug 2008
	<i>Million Pounds</i>	<i>Million Pounds</i>	<i>Million Pounds</i>	<i>Percent</i>	<i>Percent</i>
AL	1.9	1.9	1.8	95	95
AK		0.1	0.1		80
AZ	34.8	33.9	33.5	96	99
AR	5.0	5.4	6.1	121	113
CA	122.1	133.3	136.3	112	102
CO	157.7	180.7	177.8	113	98
DE-MD	2.6	3.1	3.3	125	106
FL	7.2	9.1	8.6	120	95
GA	12.8	13.7	14.3	112	105
HI	0.8	0.9	0.9	110	95
ID	15.8	20.0	20.3	129	101
IL	232.0	236.4	261.2	113	111
IN	117.3	131.4	142.1	121	108
IA	532.6	558.3	596.0	112	107
KS	477.5	467.0	452.8	95	97
KY	44.3	44.5	51.9	117	117
LA	0.5	0.5	0.6	117	119
MI	39.1	44.1	44.0	112	100
MN	186.6	206.5	223.4	120	108
MS	1.2	1.2	1.4	110	114
MO	122.1	123.8	147.3	121	119
MT	1.2	1.8	1.6	135	93
NE	586.4	625.0	641.2	109	103
NV	0.1	0.1	0.1	131	89
N ENG ³	1.2	1.1	1.3	114	116
NJ	3.9	3.7	4.3	110	116
NM	0.3	0.5	0.5	197	97
NY	2.7	3.0	3.2	122	109
NC	183.8	195.3	210.0	114	107
ND	2.1	2.2	2.4	114	106
OH	21.7	26.6	25.0	115	94
OK	80.8	82.6	93.0	115	113
OR	4.7	4.9	5.2	111	105
PA	101.0	109.2	113.8	113	104
SC	19.9	20.2	21.2	106	105
SD	86.0	73.7	85.0	99	115
TN	19.3	17.4	22.7	117	130
TX	369.9	441.6	433.2	117	98
UT	42.9	46.8	46.3	108	99
VA	42.0	37.1	40.2	96	108
WA	72.6	66.8	73.2	101	110
WV	0.6	0.6	0.7	113	130
WI	106.2	120.4	122.2	115	102
WY	0.5	0.9	0.5	111	58
US	3,863.6	4,097.4	4,270.4	111	104

¹ Includes total beef, veal, pork, lamb, and mutton.

² Percentages based on unrounded data.

³ N ENG includes CT, ME, MA, NH, RI, and VT.

**Commercial Cattle Slaughter: By State and United States,
September 2007 and 2008¹**

State	Number Slaughtered		Total Live Weight		Average Live Weight	
	2007	2008	2007	2008	2007	2008
	<i>1,000 Head</i>	<i>1,000 Head</i>	<i>1,000 Pounds</i>	<i>1,000 Pounds</i>	<i>Pounds</i>	<i>Pounds</i>
AL	0.3	0.5	257	468	867	877
AK		0.1		76		1,185
AZ	43.0	47.6	59,846	62,079	1,395	1,312
AR	1.0	1.0	1,011	962	1,053	1,001
CA	118.2	126.5	149,208	160,776	1,284	1,288
CO	181.0	205.2	239,087	272,578	1,322	1,329
DE-MD	2.9	3.6	3,726	4,545	1,271	1,275
FL						
GA	23.3		21,733		938	
HI	0.9	0.9	977	1,062	1,051	1,159
ID	19.8	27.5	24,997	33,892	1,283	1,249
IL						
IN	3.3	3.5	3,531	3,726	1,055	1,058
IA						
KS	574.3	536.4	738,949	699,871	1,287	1,305
KY	1.3	1.4	1,191	1,336	935	946
LA	0.6	0.7	475	531	822	728
MI	46.9	52.2	61,990	69,190	1,333	1,334
MN	54.7	74.9	75,103	104,677	1,381	1,406
MS	0.1	0.1	74	48	824	659
MO	6.6	7.7	7,977	9,239	1,208	1,206
MT	1.4	2.0	1,632	2,281	1,181	1,162
NE	557.8	601.3	743,828	816,049	1,335	1,358
NV	0.1	0.1	102	148	1,022	1,011
N ENG ²	1.2	1.4	1,293	1,474	1,050	1,038
NJ	2.5	3.2	2,920	3,558	1,195	1,105
NM	0.3	0.5	293	480	1,025	1,046
NY	2.4	2.5	2,666	2,991	1,118	1,199
NC	18.8	18.9	21,226	21,744	1,133	1,152
ND	0.9	1.0	1,005	1,253	1,174	1,210
OH	8.4	8.0	9,728	9,505	1,165	1,199
OK	1.5	2.1	1,602	2,261	1,039	1,104
OR	3.0	3.7	3,524	4,186	1,194	1,160
PA	77.0	86.5	95,313	106,862	1,246	1,247
SC	13.2	13.7	14,101	14,832	1,074	1,085
SD						
TN	2.1	2.6	1,813	2,149	876	832
TX	467.1	557.0	583,608	691,235	1,253	1,244
UT	52.7	56.1	68,442	73,442	1,302	1,312
VA	1.5	1.2	1,536	1,129	1,043	956
WA	88.9	90.8	117,200	118,780	1,325	1,313
WV	0.9	0.9	901	931	974	982
WI	133.1	146.0	171,619	192,178	1,302	1,331
WY	0.5	0.6	588	666	1,197	1,202
US ³	2,664.6	2,889.0	3,426,021	3,736,935	1,290	1,298

¹ Includes slaughter under Federal inspection and other Commercial slaughter, excludes farm slaughter.

² N ENG includes CT, ME, MA, NH, RI, and VT.

³ States with no data printed are still included in the US total, data not printed to avoid disclosing individual operations. Accumulated totals and percentages based on unrounded data.

**Commercial Calf Slaughter: By State and United States,
September 2007 and 2008 ¹**

State	Number Slaughtered		Total Live Weight		Average Live Weight	
	2007 <i>1,000 Head</i>	2008 <i>1,000 Head</i>	2007 <i>1,000 Pounds</i>	2008 <i>1,000 Pounds</i>	2007 <i>Pounds</i>	2008 <i>Pounds</i>
AL						
AK						
AZ						
AR						
CA	9.7	17.0	1,221	1,974	126	117
CO						
DE-MD	0.2	0.3	47	73	279	272
FL		0.1		27		488
GA	0.1	0.1	23	60	397	464
HI						
ID						
IL	2.5	5.9	1,015	1,583	412	271
IN						
IA						
KS						
KY		0.1		25		499
LA	0.3	0.5	141	268	514	522
MI	2.2	1.2	916	508	424	436
MN						
MS						
MO		0.1		36		424
MT						
NE						
NV						
N ENG ²	0.2	0.2	47	65	291	305
NJ	5.2	5.4	2,169	2,169	414	402
NM		1.8		157		87
NY	13.5	20.7	1,254	2,007	96	99
NC	0.2	0.2	85	91	467	488
ND						
OH	0.1	4.9	26	2,226	349	458
OK						
OR						
PA	12.0	15.0	4,925	5,002	412	334
SC						
SD						
TN	0.1	0.1	32	35	461	451
TX	0.9	1.8	465	536	535	299
UT						
VA	0.1		21		334	
WA						
WV						
WI						
WY						
US ³	56.0	87.5	15,734	21,755	284	251

¹ Includes slaughter under Federal inspection and other Commercial slaughter, excludes farm slaughter.

² N ENG includes CT, ME, MA, NH, RI, and VT.

³ States with no data printed are still included in the US total, data not printed to avoid disclosing individual operations. Accumulated totals and percentages based on unrounded data.

**Commercial Hog Slaughter: By State and United States,
September 2007 and 2008 ¹**

State	Number Slaughtered		Total Live Weight		Average Live Weight	
	2007	2008	2007	2008	2007	2008
	<i>1,000 Head</i>	<i>1,000 Head</i>	<i>1,000 Pounds</i>	<i>1,000 Pounds</i>	<i>Pounds</i>	<i>Pounds</i>
AL	7.2	6.5	3,258	2,952	451	453
AK	0.1	0.1	13	14	266	227
AZ	0.3	0.2	57	42	214	254
AR	15.0	18.5	6,808	8,425	455	456
CA	201.4	233.8	47,286	56,038	235	240
CO	1.0	1.1	268	288	259	253
DE-MD	1.4	1.8	336	424	238	241
FL	8.7	4.9	1,060	622	122	126
GA	10.7	9.5	2,460	2,275	230	238
HI	1.5	1.6	337	366	220	223
ID	12.4	13.1	3,078	3,305	249	253
IL	829.4	931.2	227,589	253,022	275	272
IN	587.8	717.2	152,432	185,057	259	258
IA	2,441.7	2,795.5	651,618	737,195	267	264
KS	16.4		6,977		428	
KY	218.3		57,775		265	
LA	1.0	0.9	197	174	194	201
MI	9.4	10.8	3,303	3,919	353	365
MN	741.8	847.7	193,730	221,449	262	262
MS		5.9		1,911		327
MO	572.9	694.9	155,916	188,801	272	272
MT	1.3	1.5	324	356	255	240
NE	610.9	675.9	163,027	178,782	267	265
NV						
N ENG ²	1.7	1.9	353	427	207	226
NJ	8.6	8.4	852	827	99	98
NM	0.1	0.3	32	80	244	252
NY	2.8	2.9	496	542	176	185
NC	901.6	1,048.5	229,359	264,494	255	252
ND	9.0	9.7	2,293	2,464	255	253
OH	83.8	94.5	22,397	25,353	268	269
OK	392.4	443.0	105,484	121,311	269	274
OR	15.2	15.0	3,573	3,752	235	251
PA	225.9	255.8	57,199	65,765	254	257
SC						
SD	413.9	394.0	105,217	99,639	254	253
TN	57.9	67.7	27,108	31,642	469	469
TX	35.0	36.0	9,098	8,737	260	243
UT	5.3	5.8	958	1,165	182	202
VA	211.0	199.5	54,477	52,050	258	261
WA	2.0	2.4	415	522	210	214
WV	0.9	1.0	223	244	249	244
WI	42.0	54.8	18,106	24,021	437	445
WY	0.4	0.5	122	131	285	261
US ³	8,772.8	9,958.6	2,334,352	2,642,679	266	266

¹ Includes slaughter under Federal inspection and other Commercial slaughter, excludes farm slaughter.

² N ENG includes CT, ME, MA, NH, RI, and VT.

³ States with no data printed are still included in the US total, data not printed to avoid disclosing individual operations. Accumulated totals and percentages based on unrounded data.

**Commercial Sheep and Lamb Slaughter: By State and United States,
September 2007 and 2008 ¹**

State	Number Slaughtered		Total Live Weight		Average Live Weight	
	2007	2008	2007	2008	2007	2008
	<i>1,000 Head</i>	<i>1,000 Head</i>	<i>1,000 Pounds</i>	<i>1,000 Pounds</i>	<i>Pounds</i>	<i>Pounds</i>
AL						
AK						
AZ		0.1		11		90
AR	0.1	0.1	7	9	103	109
CA						
CO	74.6	75.5	10,620	11,116	142	147
DE-MD	2.8	4.7	281	439	101	93
FL	0.3	0.5	22	25	69	56
GA	0.5	0.3	75	27	137	87
HI						
ID	0.5	0.6	68	67	125	116
IL						
IN	2.2	2.6	240	277	108	107
IA	32.8	34.8	4,626	4,825	141	139
KS	0.3	0.3	33	34	110	104
KY	1.1	1.0	134	121	125	124
LA	0.3	0.3	28	20	81	63
MI	17.1	18.1	2,172	2,261	127	125
MN	0.3	1.7	33	215	129	126
MS						
MO	0.5	0.7	57	78	104	113
MT	0.4	0.6	48	66	130	116
NE		0.1		14		133
NV	0.1	0.1	16	12	124	117
N ENG ²	2.4	3.0	240	279	99	94
NJ	11.8	13.6	981	1,141	83	84
NM	0.9	1.2	129	154	142	135
NY	3.0	3.0	269	249	88	84
NC	0.9	1.0	74	79	82	81
ND	0.1	0.1	10	13	118	117
OH	1.4	1.2	144	138	105	116
OK	0.1	0.1	12	11	104	103
OR	2.2	2.4	296	318	134	133
PA	4.7	5.2	469	519	99	100
SC						
SD	0.7	0.3	78	36	104	117
TN	1.3	1.7	94	130	72	77
TX	2.4	3.0	199	285	82	94
UT	2.6	2.8	350	373	137	131
VA	1.1	1.5	107	157	98	101
WA	1.0	0.8	138	103	145	131
WV	0.1	0.6	7	91	101	148
WI	1.4	1.3	174	161	125	126
WY	0.1	0.2	16	22	135	137
US ³	210.7	221.0	27,052	28,531	128	129

¹ Includes slaughter under Federal inspection and other Commercial slaughter, excludes farm slaughter.

² N ENG includes CT, ME, MA, NH, RI, and VT.

³ States with no data printed are still included in the US total, data not printed to avoid disclosing individual operations. Accumulated totals and percentages based on unrounded data.

**Classification of Livestock Slaughtered Under Federal Inspection:
United States**

Item	Sep 2007	Aug 2008	Sep 2008	Jan - Sep ¹		Sep 2007	Aug 2008	Sep 2008	Jan - Sep ¹	
	1,000 Head	1,000 Head	1,000 Head	1,000 Head	1,000 Head	Percent of Total	Percent of Total	Percent of Total	Percent of Total	Percent of Total
Class ²										
Cattle										
Steers	1,360	1,449	1,422	13,185	13,144	51.9	50.6	50.0	52.1	51.0
Heifers	782	836	835	7,565	7,619	29.8	29.2	29.4	29.9	29.6
All Cows	432	521	527	4,124	4,547	16.5	18.2	18.5	16.3	17.6
Dairy Cows	200	226	224	1,830	1,918	7.6	7.9	7.9	7.2	7.4
Other Cows	232	295	303	2,294	2,629	8.8	10.3	10.7	9.1	10.2
Bulls	48	59	59	412	465	1.8	2.1	2.1	1.6	1.8
Total ¹	2,621	2,866	2,842	25,285	25,774	100.0	100.0	100.0	100.0	100.0
Calves & Vealers	55	78	86	564	676	100.0	100.0	100.0	100.0	100.0
Hogs										
Barrow & Gilts	8,390	8,845	9,533	75,215	82,427	96.6	96.4	96.6	96.4	96.5
Sows	257	286	298	2,444	2,673	3.0	3.1	3.0	3.1	3.1
Boars	36	40	36	359	353	0.4	0.4	0.4	0.5	0.4
Total ¹	8,683	9,170	9,868	78,018	85,453	100.0	100.0	100.0	100.0	100.0
Sheep										
Mature Sheep	9	11	11	84	92	4.6	5.7	5.5	4.5	5.2
Lambs & Yrlngs	188	176	196	1,777	1,699	95.4	94.3	94.5	95.5	94.8
Total ¹	197	186	207	1,862	1,792	100.0	100.0	100.0	100.0	100.0
Average Dressed Weight										
	<i>Pounds</i>	<i>Pounds</i>	<i>Pounds</i>	<i>Pounds</i>	<i>Pounds</i>					
Cattle	791	784	790	771	775					
Steers ³	853	850	859	822	832					
Heifers ³	780	774	786	755	765					
All Cows ³	606	600	598	620	612					
Bulls ³	871	892	890	902	894					
Calves & Vealers	168	143	146	185	154					
Hogs	200	195	199	201	200					
Barrow Gilts ⁴	196	192	195	197	197					
Sows ⁴	306	306	306	308	308					
Boars ⁴	210	203	211	213	210					
Sheep	65	67	66	69	70					
Mature Sheep ⁵	68	67	66	67	67					
Lamb & Yrlngs ⁵	65	67	66	70	70					

¹ Total and percentages based on unrounded data.

² Species totals and classification reported by food inspectors, Inspection Operations, FSIS.

³ Included in cattle average dressed weight.

⁴ Included in hog average dressed weight.

⁵ Included in sheep average dressed weight.

**Federally Inspected Slaughter: By Region and United States,
September 2008¹**

Standard Federal Regions	Cattle							Calves
	Total ²	Steers	Heifers	Cows			Bulls	Total
				All	Dairy	Other		
	<i>1,000 Head</i>	<i>1,000 Head</i>	<i>1,000 Head</i>	<i>1,000 Head</i>	<i>1,000 Head</i>	<i>1,000 Head</i>	<i>1,000 Head</i>	<i>1,000 Head</i>
1	1.1	0.5	0.2					0.2
2	5.6	2.2	0.3	2.6	2.2	0.5	0.4	26.1
3	89.0	32.7	5.5	48.4	38.2	10.2	2.4	15.3
4	75.9	1.3	0.5	62.9	10.6	52.3	11.2	0.4
5	356.0	155.5	46.3	141.3	71.4	69.8	12.9	22.7
6	556.3	286.1	173.8	85.2	14.5	70.7	11.2	3.4
7	1,188.1	686.1	435.1	57.9	1.5	56.3	9.1	0.1
8	275.0	133.7	122.0					
9	174.4	79.3	12.7	78.8	64.7	14.1	3.6	16.8
10	120.5	44.2	38.6	32.7	14.3	18.4	5.0	
US ²	2,841.9	1,421.6	834.9	526.7	223.5	303.2	58.7	86.1
	Hogs				Sheep			
	Total ²	Barrows & Gilts	Sows	Boars	Total ²	Mature Sheep	Lambs & Yearlings	
	<i>1,000 Head</i>	<i>1,000 Head</i>	<i>1,000 Head</i>	<i>1,000 Head</i>	<i>1,000 Head</i>	<i>1,000 Head</i>	<i>1,000 Head</i>	
1	1.5	1.4			2.7	0.2	2.6	
2	11.1	10.8	0.1	0.1	15.7	1.4	14.4	
3	455.3	441.3	2.2	11.9	11.8	0.9	10.9	
4	1,449.8	1,361.0	87.3	1.5	4.6	1.0	3.5	
5	2,617.9	2,494.9	119.3	3.7	31.7	3.5	28.3	
6	489.2	461.2	27.6	0.3				
7	4,177.4	4,097.7	61.3	18.4	35.5	0.5	35.0	
8	407.2	406.8	0.4		77.9	1.5	76.3	
9	228.9	228.8						
10	29.5	29.4	0.1		2.7	0.3	2.4	
US ²	9,867.7	9,533.3	298.5	35.9	206.9	11.4	195.6	

¹ States included in regions are as follows: 1- CT, ME, NH, VT, MA, & RI; 2- NY & NJ; 3- DE-MD, PA, WV, & VA; 4- AL, FL, GA, KY, MS, NC, SC, & TN; 5- IL, IN, MI, MN, OH, & WI; 6- AR, LA, NM, OK, & TX; 7- IA, KS, MO, & NE; 8- CO, MT, ND, SD, UT, & WY; 9- AZ, CA, HI & NV; 10- AK, ID, OR, & WA.

² Regions with no data printed are still included in the US and Region total, data not printed to avoid disclosing individual operations. Totals may not add due to rounding.

**Federally Inspected Slaughter: By Region and United States,
January - September 2008 ¹**

Standard Federal Regions	Cattle							Calves
	Total ²	Steers	Heifers	Cows			Bulls	Total
				All	Dairy	Other		
	<i>1,000 Head</i>	<i>1,000 Head</i>	<i>1,000 Head</i>	<i>1,000 Head</i>	<i>1,000 Head</i>	<i>1,000 Head</i>	<i>1,000 Head</i>	<i>1,000 Head</i>
1	8.3	3.6	1.5					1.7
2	42.6	14.6	2.6	22.2	18.5	3.7	3.2	207.0
3	767.9	314.8	69.3	364.4	289.2	75.2	19.4	120.4
4	651.8	11.3	3.9	548.3	102.3	446.0	88.4	3.2
5	3,073.1	1,359.7	386.7	1,239.2	631.9	607.3	87.5	168.1
6	5,161.4	2,735.1	1,581.2	741.3	131.2	610.0	103.9	22.6
7	10,909.6	6,150.2	4,123.6	561.0	13.8	547.3	74.8	0.6
8	2,558.7	1,343.0	1,044.2					
9	1,578.7	799.8	109.3	642.5	553.9	88.6	27.1	142.3
10	1,021.7	411.6	296.3	274.2	123.4	150.8	39.5	
US ²	25,773.8	13,143.7	7,618.5	4,546.6	1,918.1	2,628.6	465.0	675.6
	Hogs				Sheep			
	Total ²	Barrows & Gilts	Sows	Boars	Total ²	Mature Sheep	Lambs & Yearlings	
	<i>1,000 Head</i>	<i>1,000 Head</i>	<i>1,000 Head</i>	<i>1,000 Head</i>	<i>1,000 Head</i>	<i>1,000 Head</i>	<i>1,000 Head</i>	
1	11.0	10.5			18.3	1.1	17.2	
2	98.8	96.3	1.4	1.0	126.5	12.5	114.0	
3	4,067.1	3,932.5	22.5	112.1	81.6	4.6	77.0	
4	12,317.8	11,658.9	643.6	15.2	30.6	9.4	21.2	
5	22,616.6	21,433.4	1,151.7	31.5	272.6	29.0	243.6	
6	4,286.4	4,057.5	221.6	7.4				
7	36,208.1	35,398.6	623.9	185.7	262.9	3.9	259.0	
8	3,639.3	3,632.9	6.3	0.1	731.8	14.2	717.6	
9	1,946.5	1,945.5						
10	261.8	260.8	0.9	0.1	20.8	1.3	19.5	
US ²	85,453.4	82,426.9	2,673.0	353.5	1,791.6	92.4	1,699.2	

¹ States included in regions are as follows: 1- CT, ME, NH, VT, MA, & RI; 2- NY & NJ; 3- DE-MD, PA, WV, & VA; 4- AL, FL, GA, KY, MS, NC, SC, & TN; 5- IL, IN, MI, MN, OH, & WI; 6- AR, LA, NM, OK, & TX; 7- IA, KS, MO, & NE; 8- CO, MT, ND, SD, UT, & WY; 9- AZ, CA, HI & NV; 10- AK, ID, OR, & WA.

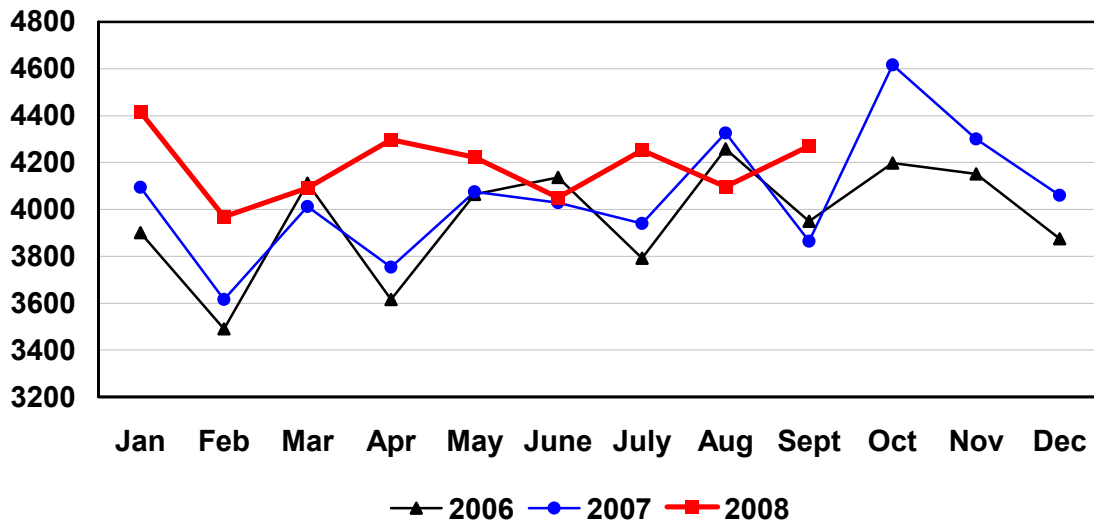
² Regions with no data printed are still included in the US and Region total, data not printed to avoid disclosing individual operations. Totals may not add due to rounding.

Federally Inspected Slaughter: Percent of Total Commercial Slaughter by Species, United States

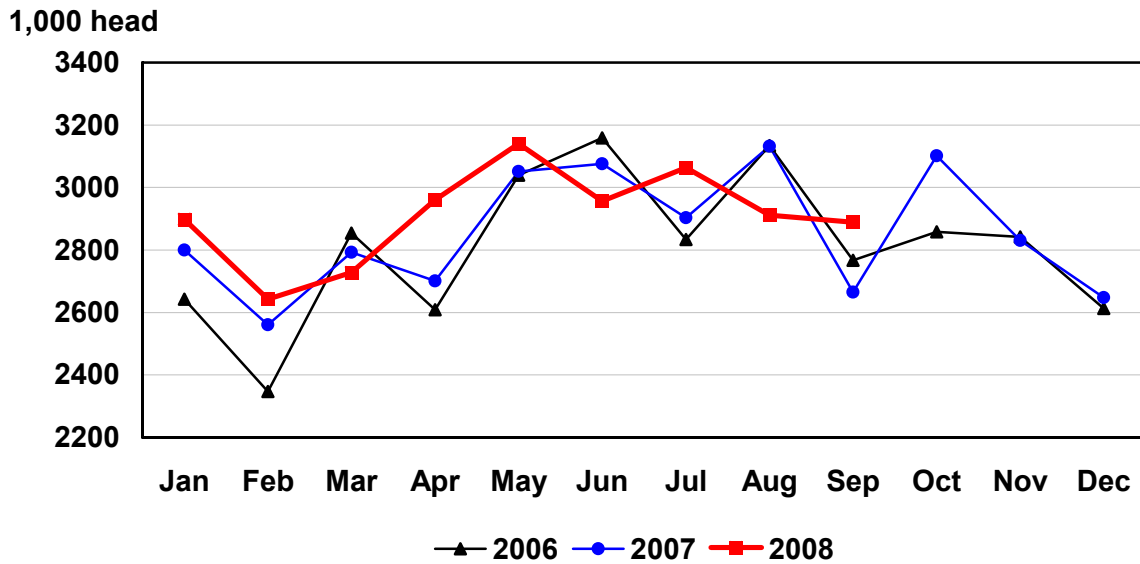
Species	Sep 2007	Aug 2008	Sep 2008	Jan - Sep	
				2007	2008
	<i>Percent</i>	<i>Percent</i>	<i>Percent</i>	<i>Percent</i>	<i>Percent</i>
Cattle	98.4	98.4	98.4	98.4	98.4
Calves	97.9	98.5	98.4	98.4	98.5
Hogs	99.0	99.0	99.1	99.0	99.1
Sheep	93.3	92.7	93.6	94.0	94.0

U.S. Monthly Commercial Red Meat Production

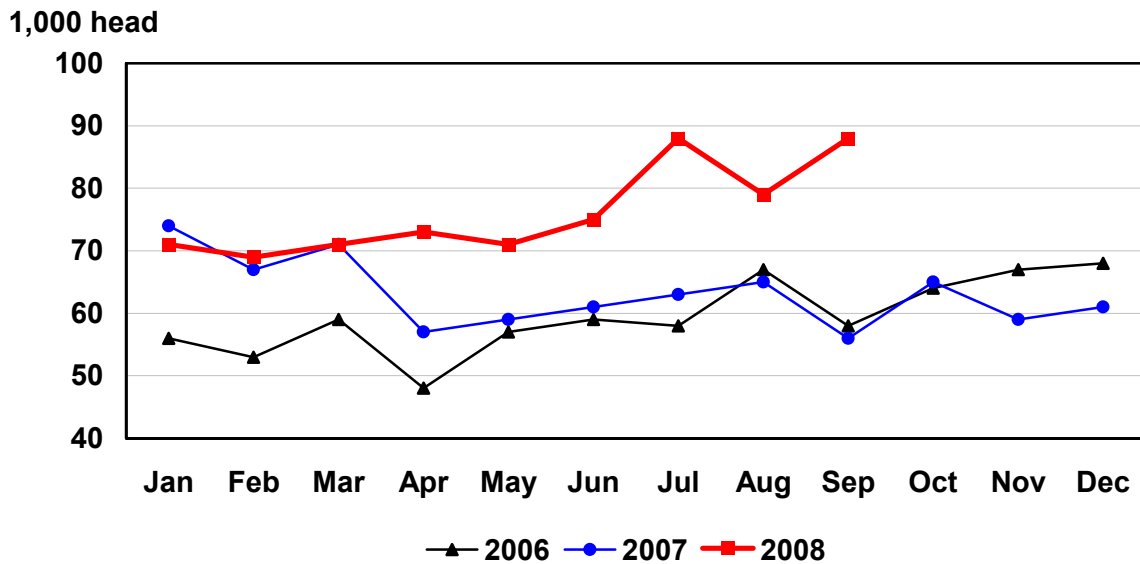
Million Pounds



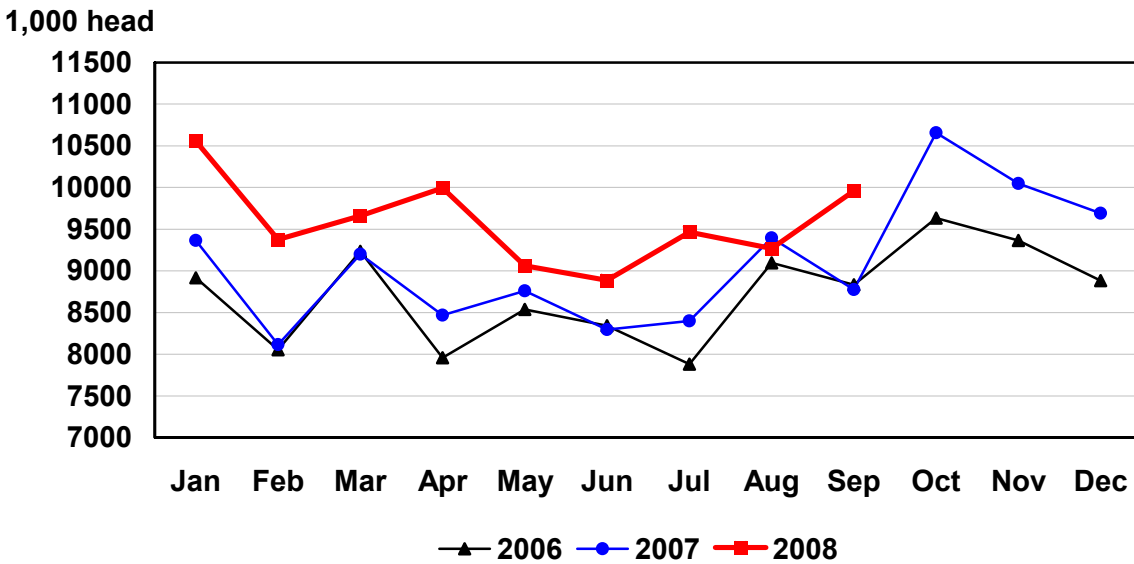
U.S. Monthly Commercial Slaughter Cattle



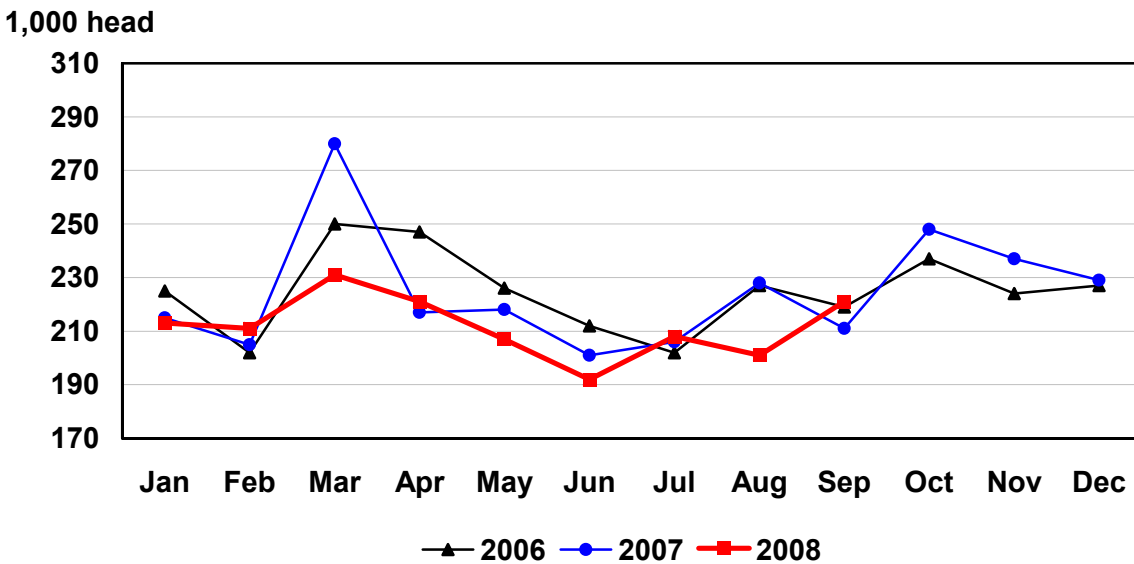
U.S. Monthly Commercial Slaughter Calves



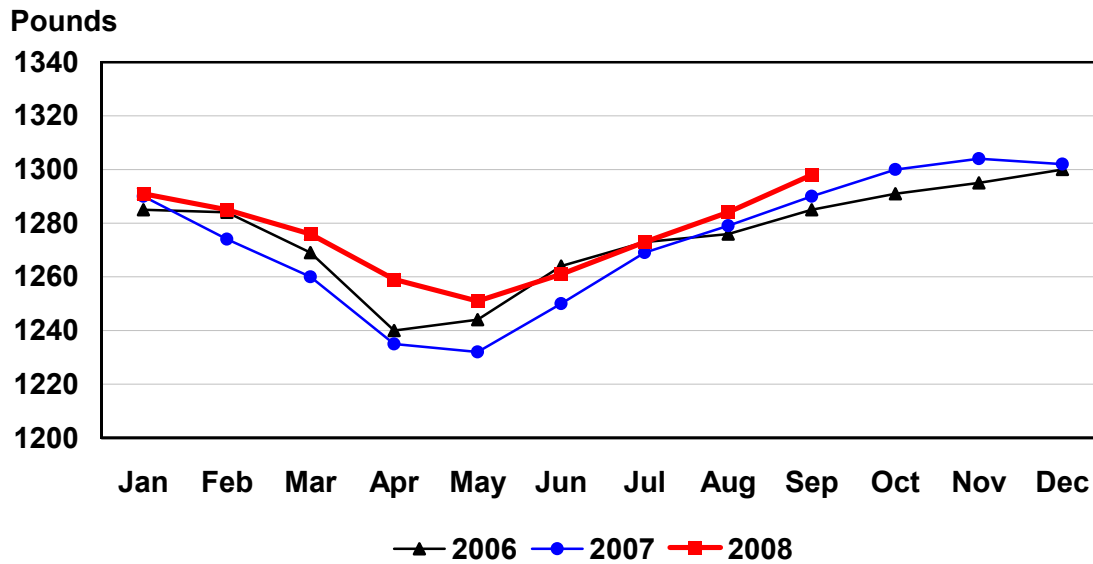
U.S. Monthly Commercial Slaughter Hogs



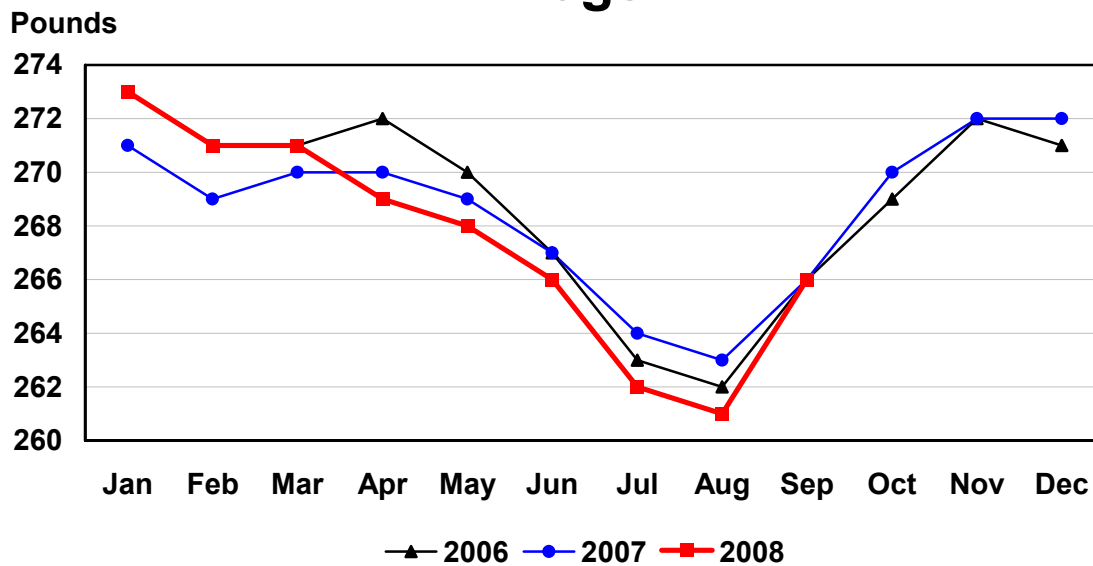
U.S. Monthly Commercial Slaughter Sheep



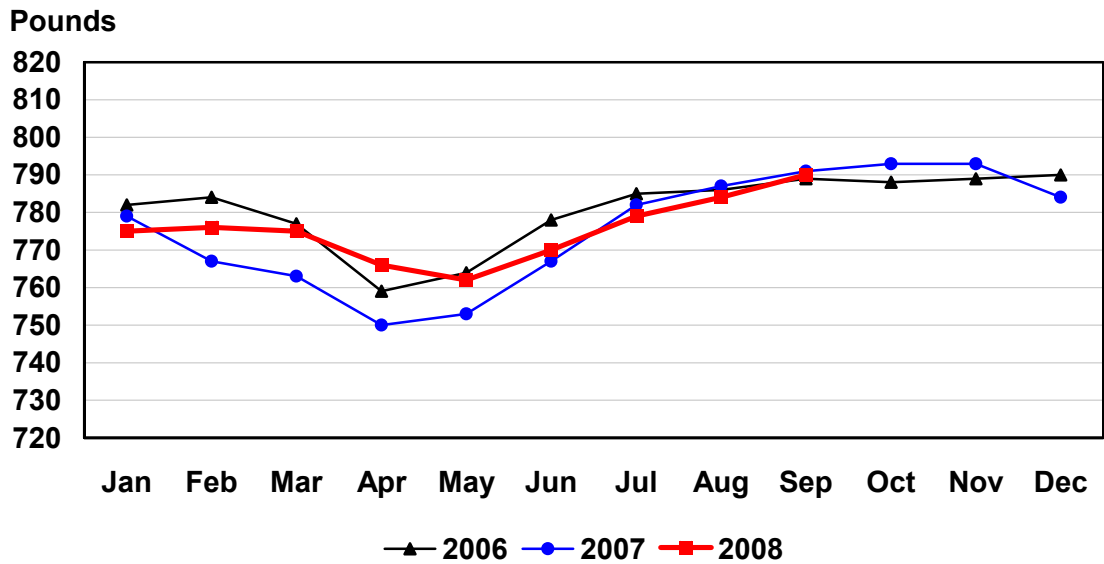
U.S. Monthly Commercial Slaughter Average Live Weight Cattle



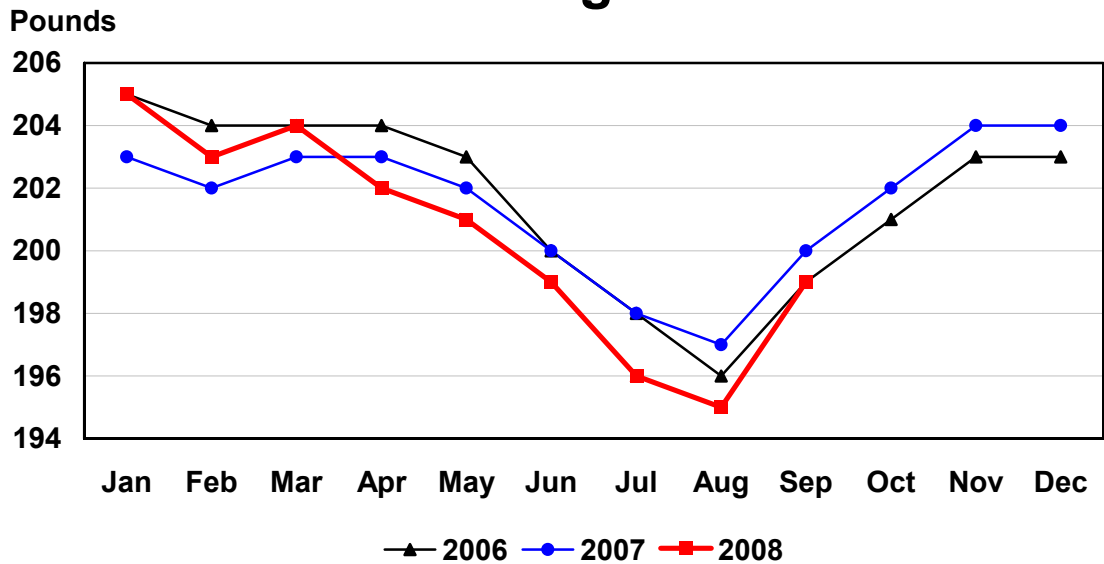
U.S. Monthly Commercial Slaughter Average Live Weight Hogs



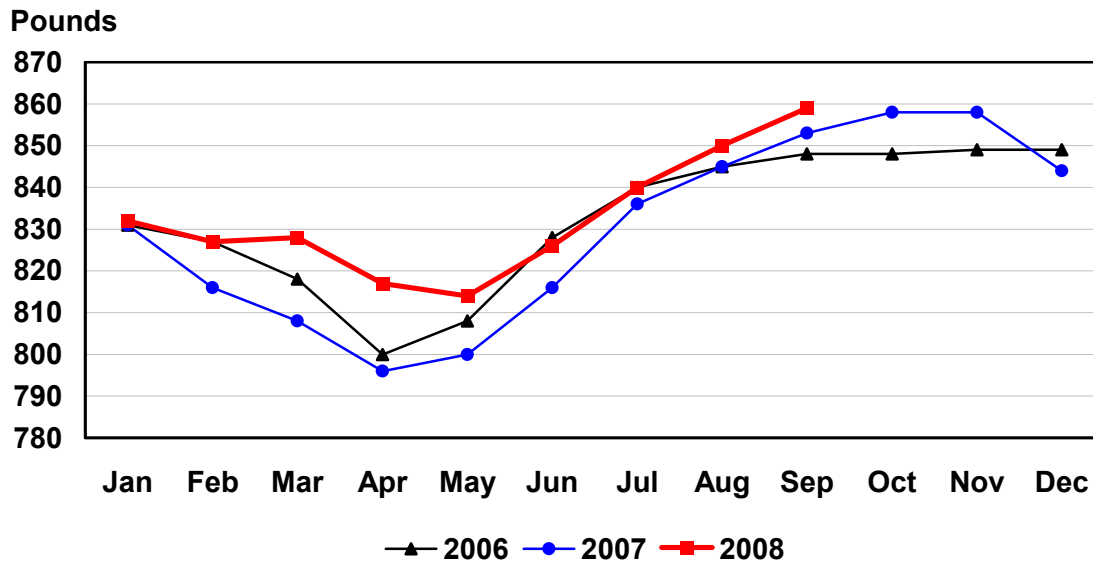
U.S. Monthly Federally Inspected Average Dressed Weight Cattle



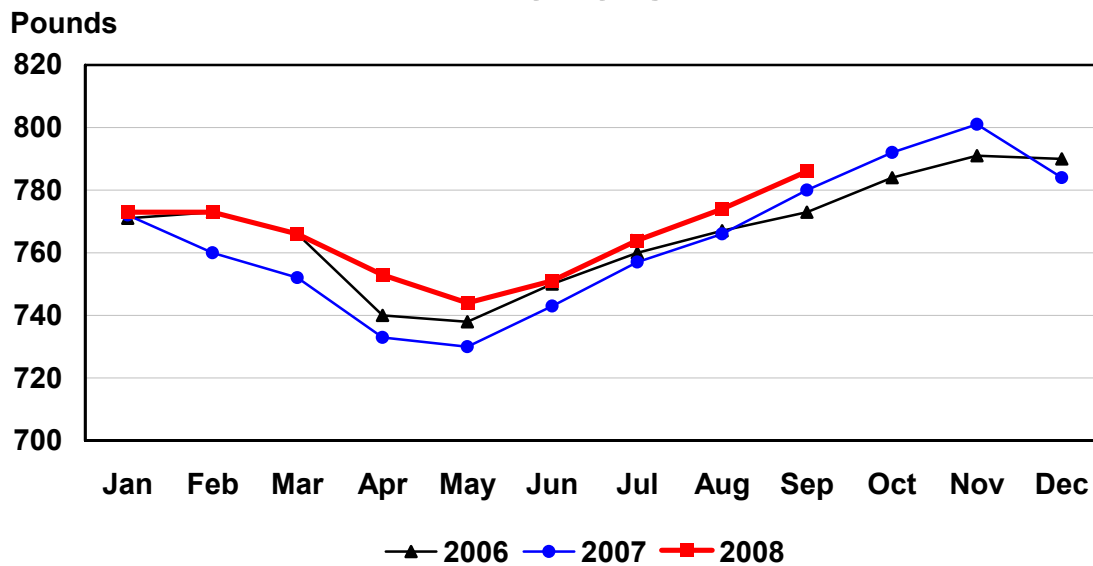
U.S. Monthly Federally Inspected Average Dressed Weight Hogs



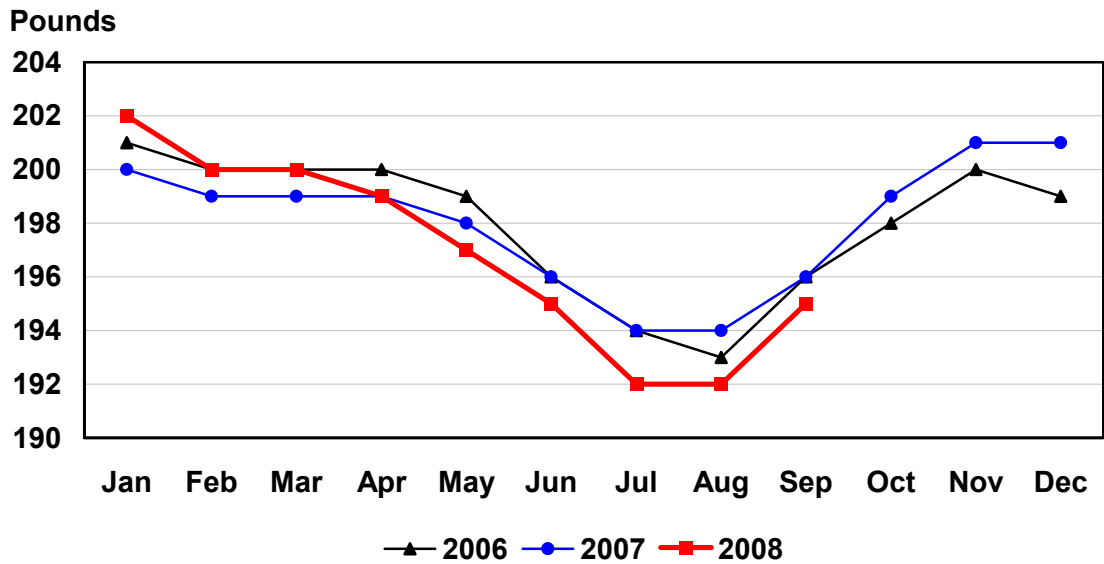
U.S. Monthly Federally Inspected Average Dressed Weight Steers



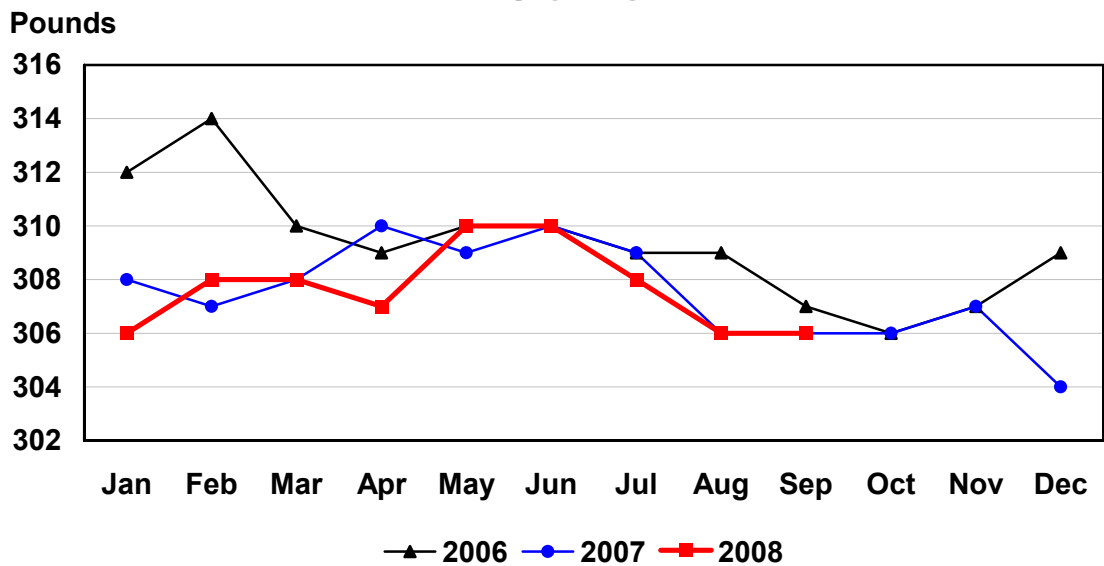
U.S. Monthly Federally Inspected Average Dressed Weight Heifers



U.S. Monthly Federally Inspected Average Dressed Weight Barrows and Gilts



U.S. Monthly Federally Inspected Average Dressed Weight Sows



Reliability of Livestock Slaughter Estimates

Data Sources: Primary data for the commercial livestock slaughter estimates are obtained from electronic reports completed by inspectors from the Food Safety and Inspection Service (FSIS), USDA, which provide daily counts of animals slaughtered in Federally Inspected (FI) plants, in addition to total live and dressed weights. These counts are combined with data from State-administered Non-Federally Inspected (NFI) slaughter plants to derive total commercial slaughter estimates. More than 95 percent of the total U.S. slaughter for any species is under Federal Inspection.

There are nearly 800 livestock slaughter plants in the U.S. operating under Federal Inspection and over 2,000 Non-Federally Inspected (State-inspected or custom-exempt) slaughter plants. Slaughter from State-inspected Talmedge-Aiken plants is included in FI totals (see Types of Plants, page 20). To prevent duplication in reporting between FI and NFI plants and assure all FI plants are included, certificates prepared by FSIS identifying operating status are constantly monitored

Revision Policy: Number of head slaughtered, live weights, and dressed weights are subject to revision the following month after the monthly release. Annual totals are published in the slaughter summary each March which includes any revisions made to current and previous year's published data. Revisions are generally the result of late reports received from slaughter plants and are usually less than one-half of one percent. No revisions will be made to the previous year's data after the publication of the annual summary in March.

Procedures and Reliability: The livestock slaughter data is obtained electronically on a daily basis and summarized approximately two weeks after the week of slaughter. An edit compares each plant's data with the historical data for that plant. Data are checked for unusual values for head kill, patterns of kill, average weights, and dressing percent, based on each plant's past operating profile. In addition, the edit provides a listing of missing reports for follow-up contact with FSIS. Average live and dressed weights and dressing percentages by State are compared with the previous weeks as an additional check. Fluctuations are frequently the result of plants permanently or temporarily closing and a shift in the species reported.

The FSIS District Veterinary Medical Specialists (DVMS) are contacted by e-mail or telephone for missing or potentially erroneous slaughter data. This assures that plants slaughtering a large number of head or several species are accounted for each week. Any corrections FSIS makes to the slaughter data are included in the summary.

Imputation may be necessary for incomplete reports. The imputation of live and dressed weights is based on the current week reported data of plants of similar size and location. Imputation for live and dressed weight data for cattle and hogs is less than 10 percent and 7 percent, respectively. The imputation for calves and sheep is more frequent and variable. If no data is received electronically or by other means, for plants slaughtering fewer than 50 total head weekly of only one species, data are imputed. The imputation of head for any plant is based on the historical data for that particular plant. The imputation of head slaughtered is rare but when necessary, the imputed head kill for missing plants usually is less than 1 percent of the U.S. head kill totals.

FI data are summarized weekly and accumulated to a monthly total for this release. These weekly totals are published by USDA's Agricultural Marketing Service (AMS) in **Livestock, Meat, Wool Market News**, Weekly Summary, and Statistics and are also available on the NASS website. NFI data are summarized monthly only.

Livestock slaughter estimates are based on a census of operating plants and therefore, have no sampling error. However, they may be subject to errors such as omissions, duplications and mistakes in reporting, recording and processing the data. These errors are minimized through rigid quality controls in the edit and summarization process, and a careful review of all reported data for consistency and reasonableness.

No data are published when an individual plant's data could be divulged. If not published, these data are still included in US and region totals. A review of the data is made annually to determine the publishable data.

Types of Livestock Slaughter Plants

There are generally **four types** of slaughtering plants.

- (1) **Federally Inspected (FI) Plants:** Plants that transport meat interstate must employ federal inspectors to assure compliance with USDA standards. Any State whose commercial plants operate entirely under federal inspection may still have custom-exempt establishments for which NFI estimates are made.
- (2) **Talmedge-Aiken (TA) Plants:** Slaughter plants in which USDA is responsible for inspection. However, federal inspection is carried out by State employees. These plants are considered to be federally inspected.
- (3) **Non-Federally Inspected (NFI) Plants:** Plants which sell and transport only intrastate. State inspectors assure compliance with individual State standards for these NFI plants. Mobile slaughtering units are excluded and are considered farm slaughter.
- (4) **Custom-Exempt Plants:** Plants that do not sell meat but operate on a custom basis only are custom-exempt. The animals and meat are not inspected, but the facilities must meet health standards. These are considered NFI plants and head kill is included in NFI totals.

Terms and Definitions Used for Livestock Slaughter Estimates

Average Live Weight: Excludes post-mortem condemnations

Commercial Production: Includes slaughter and meat production in federally inspected and other plants, but excludes animals slaughtered on farms.

Dressed Weight: The weight of a chilled animal carcass. Beef with kidney knob in; veal with hide off; lamb and mutton with pluck out; pork with leaf fat and kidneys out, jowls on and head off.

Dressing Percent: Usually expressed as a percentage yield of chilled carcass in relation to the weight of the live animal on hoof. For example, a live hog that weighed 200 pounds on hoof and yielded a carcass weighing 140 pounds would have a dressing percentage of 70.

Food and Meat Inspection: Includes examination, checking, or testing of a carcass and/or meat against established government standards and involves checking the facility for cleanliness, health of animals, or parts of animals and quality of the meat produced.

Number of Head: Includes post-mortem condemnations.

Plant, Slaughter: An establishment where animals are killed and butchered.

Red Meat: Red meat production is the carcass weight after slaughter excluding condemnation and is comprised of beef, veal, pork, and lamb and mutton. The FI red meat production is equal to the total carcass weight after slaughter. The NFI meat production formula is (NFI head kill) X (live weight) X (FI dressing percentage) = NFI red meat production.

Slaughter: Killing and butchering of animals primarily for food.

Slaughter, Farm: Animals slaughtered on farms primarily for home consumption. Excludes custom slaughter for farmers at commercial establishments, but includes mobile slaughtering on farms. These estimates appear only in the annual slaughter release.

Total Live Weight: Excludes post-mortem condemnations.

Wholesome Meat Act: Legislation that specifies that all meat produced for sale in the U.S. must be inspected. Meat that is transported interstate must be inspected in compliance with Federal (USDA) Standards.

Information Contacts

Listed below are the commodity specialists in the Livestock Branch of the National Agricultural Statistics Service to contact for additional information.

Dan Kerestes, Chief, Livestock Branch.....	(202) 720-3570
Scott Hollis, Head, Livestock Section.....	(202) 690-2424
Jim Collom – Dairy Products.....	(202) 690-3236
Joe Gaynor – Dairy Products Prices.....	(202) 690-2168
Jason Hardegree – Cattle, Cattle on Feed.....	(202) 720-3040
Benita Hodge – Livestock Slaughter.....	(515) 284-4340
Mike Miller – Milk Production and Milk Cows.....	(202) 720-3278
Everett Olbert – Sheep and Goats.....	(202) 720-4751
Nicholas Streff – Hogs and Pigs.....	(202) 720-3106

ACCESS TO REPORTS!!

For your convenience, there are several ways to obtain NASS reports, data products, and services:

INTERNET ACCESS

All NASS reports are available free of charge on the worldwide Internet. For access, connect to the Internet and go to the NASS Home Page at: www.nass.usda.gov.

E-MAIL SUBSCRIPTION

All NASS reports are available by subscription free of charge direct to your e-mail address. Starting with the NASS Home Page at www.nass.usda.gov, under the right navigation, *Receive reports by Email*, click on **National** or **State**. Follow the instructions on the screen.

PRINTED REPORTS OR DATA PRODUCTS

CALL OUR TOLL-FREE ORDER DESK: 800-999-6779 (U.S. and Canada)
Other areas, please call 703-605-6220 FAX: 703-605-6900
(Visa, MasterCard, check, or money order acceptable for payment.)

ASSISTANCE

For **assistance** with general agricultural statistics or further information about NASS or its products or services, contact the **Agricultural Statistics Hotline** at **800-727-9540**, 7:30 a.m. to 4:00 p.m. ET, or e-mail: nass@nass.usda.gov.

The U.S. Department of Agriculture (USDA) prohibits discrimination in all its programs and activities on the basis of race, color, national origin, age, disability, and where applicable, sex, marital status, familial status, parental status, religion, sexual orientation, genetic information, political beliefs, reprisal, or because all or part of an individual's income is derived from any public assistance program. (Not all prohibited bases apply to all programs.) Persons with disabilities who require alternative means for communication of program information (Braille, large print, audiotope, etc.) should contact USDA's TARGET Center at (202) 720-2600 (voice and TDD).

To file a complaint of discrimination, write to USDA, Director, Office of Civil Rights, 1400 Independence Avenue, S.W., Washington, D.C. 20250-9410, or call (800) 795-3272 (voice) or (202) 720-6382 (TDD). USDA is an equal opportunity provider and employer.