

Livestock Slaughter

Released November 21, 2008, by the National Agricultural Statistics Service (NASS), Agricultural Statistics Board, U.S. Department of Agriculture. For information on *Livestock Slaughter* call Benita Hodge at (515) 284-4340, office hours 7:00 a.m. to 4:00 p.m. CT.

Lamb and Mutton Production at Record Low for October

Commercial red meat production for the United States totaled 4.53 billion pounds in October, down 2 percent from the 4.62 billion pounds produced in October 2007.

Beef production, at 2.34 billion pounds, was 4 percent below the previous year. Cattle slaughter totaled 2.99 million head, down 4 percent from October 2007. The average live weight was up 3 pounds from the previous year, at 1,303 pounds.

Veal production totaled 13.6 million pounds, 22 percent above October a year ago. Calf slaughter totaled 95,700 head, up 47 percent from October 2007. The average live weight was down 44 pounds from last year, at 244 pounds.

Pork production totaled 2.16 billion pounds, up 1 percent from the previous year. Hog kill totaled 10.8 million head, up 1 percent from October 2007. The average live weight was down 1 pound from the previous year, at 269 pounds.

Lamb and mutton production, at 15.0 million pounds, was down 8 percent from October 2007. Sheep slaughter totaled 225,000 head, 9 percent below last year. The average live weight was 133 pounds, up 1 pound from October a year ago.

January to October 2008 commercial red meat production was 42.2 billion pounds, up 5 percent from 2007. Accumulated beef production was up 2 percent from last year, veal was up 2 percent, pork was up 8 percent from last year, and lamb and mutton production was down 4 percent.

October 2007 contained 23 weekdays (including one holiday) and 4 Saturdays.

October 2008 contained 23 weekdays (including one holiday) and 4 Saturdays.

Contents

	Page
Red Meat Production, Commercial and FI, by Type, U.S.	1
Livestock Slaughter, Number and Average Weights, by Species and Type of Slaughter, U.S.	2
Commercial Red Meat Production, by State and U.S.	3
Commercial Cattle Slaughter, Number, Total and Average Live Weight, by State and U.S.	4
Commercial Calf Slaughter, Number, Total and Average Live Weight, by State and U.S.	5
Commercial Hog Slaughter, Number, Total and Average Live Weight, by State and U.S.	6
Commercial Sheep and Lamb Slaughter, Number, Total and Average Live Weight, by State and U.S.	7
Federally Inspected Classification of Number and Average Dressed Weight, by Species and Class and U.S.	8
Federally Inspected Slaughter by Species and Class, by Region and U.S.	9
Federally Inspected Percent of Total Commercial, by Species, U.S.	11
Reliability Statement.....	18
Types of Plants.....	19
Terms and Definitions	20
Information Contacts	20

Commercial Red Meat Production: United States ¹

Type	Oct 2007	Sep 2008	Oct 2008	Oct 08 % of		Jan - Oct ²		
				Oct 2007	Sep 2008	2007	2008	08 as % of 07
	<i>Million Pounds</i>	<i>Million Pounds</i>	<i>Million Pounds</i>	<i>Percent</i>	<i>Percent</i>	<i>Million Pounds</i>	<i>Million Pounds</i>	<i>Percent</i>
Beef	2,443.0	2,269.8	2,342.0	96	103	22,130.3	22,521.6	102
Veal	11.1	12.8	13.6	122	106	116.8	118.6	102
Pork	2,145.1	*1,975.6	2,160.8	101	109	17,924.9	19,410.2	108
Lamb & Mutton	16.4	14.4	15.0	92	105	151.6	145.6	96
Total Red Meat ³	4,615.6	*4,272.5	4,531.4	98	106	40,323.6	42,196.1	105

* Revised.

¹ Based on packers' dressed weights and excludes farm slaughter.

² Accumulated totals and percentages based on unrounded data.

³ Totals may not equal sum of the parts due to rounding.

Federally Inspected Red Meat Production: United States ¹

Type	Oct 2007	Sep 2008	Oct 2008	Oct 08 % of		Jan - Oct ²		
				Oct 2007	Sep 2008	2007	2008	08 as % of 07
	<i>Million Pounds</i>	<i>Million Pounds</i>	<i>Million Pounds</i>	<i>Percent</i>	<i>Percent</i>	<i>Million Pounds</i>	<i>Million Pounds</i>	<i>Percent</i>
Beef	2,407.3	2,239.2	2,305.4	96	103	21,835.7	22,215.8	102
Veal	10.7	12.5	13.2	122	106	114.4	115.9	101
Pork	2,127.9	*1,960.1	2,144.8	101	109	17,779.9	19,260.3	108
Lamb & Mutton	15.5	13.6	14.2	92	104	144.7	138.9	96
Total Red Meat ³	4,561.4	*4,225.4	4,477.6	98	106	39,874.8	41,730.9	105

* Revised.

¹ Based on packers' dressed weights and excludes farm slaughter.

² Accumulated totals and percentages based on unrounded data.

³ Totals may not equal sum of the parts due to rounding.

Livestock Slaughter: Number and Average Weights, United States ¹

Species	Unit	Oct 2007	Sep 2008	Oct 2008	Oct 08 % of		Jan - Oct ²		08 % of 07
					Oct 2007	Sep 2008	2007	2008	
					<i>Percent</i>	<i>Percent</i>			<i>Prent</i>
Cattle No.									
Fed. Insp.	Thou	3,045.8	2,841.9	2,933.4	96	103	28,331.0	28,707.2	101
Other	Thou	56.1	47.1	57.4	102	122	454.5	472.0	104
Comm'l. ³	Thou	3,102.0	2,889.0	2,990.8	96	104	28,785.5	29,179.1	101
Live Wt/Hd									
Fed. Insp.	Lbs	1,303	1,300	1,306	100	100	1,270	1,280	101
Other	Lbs	1,131	1,149	1,138	101	99	1,141	1,145	100
Comm'l.	Lbs	1,300	1,298	1,303	100	100	1,268	1,278	101
Calves No.									
Fed. Insp.	Thou	63.7	86.1	93.9	147	109	627.4	769.5	123
Other	Thou	1.6	1.4	1.8	112	125	10.7	12.2	114
Comm'l. ³	Thou	65.3	87.5	95.7	147	109	638.1	781.7	123
Live Wt/Hd									
Fed. Insp.	Lbs	285	248	241	84	97	307	258	84
Other	Lbs	400	427	424	106	99	396	408	103
Comm'l.	Lbs	288	251	244	85	97	308	261	84
Hogs No.									
Fed. Insp.	Thou	10,555.2	*9,878.1	10,657.2	101	108	88,573.2	96,121.0	109
Other	Thou	101.4	90.9	93.4	92	103	859.3	870.7	101
Comm'l. ³	Thou	10,656.6	*9,969.0	10,750.7	101	108	89,432.4	96,991.6	108
Live Wt/Hd									
Fed. Insp.	Lbs	270	266	270	100	101	268	268	100
Other	Lbs	238	236	238	100	101	233	238	102
Comm'l.	Lbs	270	266	269	100	101	268	268	100
Sheep&Lambs No.									
Fed. Insp.	Thou	232.2	206.9	209.4	90	101	2,093.9	2,001.0	96
Other	Thou	16.2	14.0	15.6	97	111	134.1	129.9	97
Comm'l. ³	Thou	248.4	221.0	225.0	91	102	2,228.0	2,130.9	96
Live Wt/Hd									
Fed. Insp.	Lbs	134	131	135	101	103	138	139	101
Other	Lbs	109	103	104	95	101	104	105	101
Comm'l.	Lbs	132	129	133	101	103	136	137	101
Goats No.									
Fed. Insp.	Thou	60.8	63.2	57.0	94	90	521.7	546.2	105
Other	Thou	16.8	16.6	18.9	113	114	155.7	159.4	102
Comm'l. ³	Thou	77.6	79.9	75.9	98	95	677.4	705.7	104
Live Wt/Hd									
Fed. Insp.	Lbs	62	61	61	99	100	61	62	101
Other	Lbs	47	76	70	148	92	56	64	114
Comm'l.	Lbs	59	64	63	108	99	60	62	104
Bison No.									
Fed. Insp.	Thou	3.7	4.4	4.1	110	93	42.2	46.3	110
Other	Thou	1.5	1.1	1.4	91	123	13.9	13.0	93
Comm'l. ³	Thou	5.2	5.5	5.5	105	99	56.2	59.3	106

* Revised.

¹ Excludes slaughter on farms.

² Accumulated totals and percentages based on unrounded data.

³ Totals may not equal sum of the parts due to rounding.

Commercial Red Meat Production: By State and United States ¹

State	Oct 2007	Sep 2008	Oct 2008	Oct 08 as % of ²	
				Oct 2007	Sep 2008
	<i>Million Pounds</i>	<i>Million Pounds</i>	<i>Million Pounds</i>	<i>Percent</i>	<i>Percent</i>
AL	2.3	1.8	1.9	79	101
AK	0.1	0.1	0.1	84	112
AZ	36.1	33.5	32.6	90	97
AR	6.0	6.1	5.8	98	96
CA	145.8	136.3	148.3	102	109
CO	185.7	177.8	177.1	95	100
DE-MD	3.5	3.3	3.2	92	97
FL	8.2	8.6	9.3	113	108
GA	14.2	14.3	14.8	104	103
HI	0.9	0.9	1.0	109	107
ID	18.3	20.3	22.9	125	113
IL	278.3	261.2	279.3	100	107
IN	153.4	142.1	160.2	104	113
IA	651.8	596.0	651.0	100	109
KS	555.3	452.8	462.2	83	102
KY	55.3	51.9	56.7	102	109
LA	0.6	0.6	0.7	111	109
MI	42.3	44.0	44.3	105	101
MN	230.9	223.4	239.4	104	107
MS	1.5	1.4	1.6	104	115
MO	144.4	147.3	152.2	105	103
MT	1.7	1.6	1.4	86	86
NE	680.3	*643.3	666.3	98	104
NV	0.1	0.1	0.1	113	117
N ENG ³	1.4	1.3	1.5	103	111
NJ	4.1	4.3	4.0	98	93
NM	0.3	0.5	0.6	192	126
NY	3.4	3.2	3.7	110	115
NC	229.8	210.0	232.0	101	110
ND	2.7	2.4	2.9	109	124
OH	27.3	25.0	28.2	103	113
OK	94.8	93.0	103.8	109	112
OR	5.5	5.2	5.4	99	106
PA	119.5	113.8	123.6	103	109
SC	23.2	21.2	22.5	97	106
SD	106.1	85.0	99.3	94	117
TN	22.5	22.7	24.7	110	109
TX	452.5	433.2	454.1	100	105
UT	49.4	46.3	44.6	90	96
VA	50.3	40.2	43.2	86	107
WA	78.2	73.2	75.1	96	102
WV	1.0	0.7	1.2	115	168
WI	126.3	122.2	128.6	102	105
WY	0.3	0.5	0.3	104	57
US	4,615.6	*4,272.5	4,531.4	98	106

* Revised.

¹ Includes total beef, veal, pork, lamb, and mutton.

² Percentages based on unrounded data.

³ N ENG includes CT, ME, MA, NH, RI, and VT.

**Commercial Cattle Slaughter: By State and United States,
October 2007 and 2008 ¹**

State	Number Slaughtered		Total Live Weight		Average Live Weight	
	2007	2008	2007	2008	2007	2008
	<i>1,000 Head</i>	<i>1,000 Head</i>	<i>1,000 Pounds</i>	<i>1,000 Pounds</i>	<i>Pounds</i>	<i>Pounds</i>
AL	0.5	0.6	434	477	857	856
AK	0.1	0.1	105	84	1,131	1,030
AZ	45.2	46.9	63,752	60,258	1,416	1,290
AR	1.0	0.9	1,088	840	1,049	990
CA	138.2	137.2	175,538	175,260	1,292	1,294
CO	211.0	201.1	282,824	270,869	1,342	1,348
DE-MD	3.8	3.6	4,990	4,581	1,300	1,290
FL						
GA	25.9		24,133		935	
HI	1.0	1.0	1,065	1,176	1,019	1,169
ID	24.0	31.1	29,226	38,433	1,236	1,251
IL						
IN	4.8	4.7	5,020	5,012	1,053	1,056
IA						
KS	662.9	547.8	861,628	717,901	1,300	1,311
KY	1.8	1.9	1,621	1,738	898	932
LA	0.6	0.7	468	528	774	716
MI	52.1	52.6	67,296	70,176	1,303	1,344
MN	69.2	79.7	94,409	110,164	1,372	1,389
MS	0.1	0.1	73	79	814	829
MO	8.7	9.3	10,358	11,034	1,193	1,187
MT	2.1	1.8	2,396	2,044	1,164	1,156
NE	635.0	614.9	860,841	841,064	1,357	1,369
NV	0.1	0.2	149	181	1,036	1,130
N ENG ²	1.6	1.6	1,612	1,634	1,039	1,034
NJ	2.9	2.8	3,478	3,055	1,204	1,105
NM	0.3	0.6	337	618	994	1,052
NY	3.1	3.0	3,387	3,507	1,125	1,173
NC	20.4	20.7	22,959	23,885	1,129	1,159
ND	1.2	1.4	1,465	1,757	1,181	1,244
OH	10.6	9.7	12,391	11,704	1,168	1,209
OK	1.4	2.4	1,590	2,655	1,102	1,091
OR	3.4	4.1	3,917	4,781	1,172	1,205
PA	89.4	92.9	110,938	116,138	1,250	1,263
SC	14.5	14.1	15,434	15,379	1,072	1,094
SD						
TN	2.7	3.0	2,271	2,423	858	836
TX	575.6	587.1	719,700	729,301	1,254	1,246
UT	60.3	54.6	78,935	71,032	1,311	1,305
VA	1.5	1.2	1,489	1,255	1,015	1,065
WA	95.8	93.2	126,780	122,302	1,329	1,316
WV	1.7	1.8	1,652	1,830	988	1,013
WI	155.6	156.9	203,480	207,019	1,319	1,333
WY	0.3	0.3	379	410	1,174	1,181
US ³	3,102.0	2,990.8	4,017,875	3,884,287	1,300	1,303

¹ Includes slaughter under Federal inspection and other Commercial slaughter, excludes farm slaughter.

² N ENG includes CT, ME, MA, NH, RI, and VT.

³ States with no data printed are still included in the US total, data not printed to avoid disclosing individual operations. Accumulated totals and percentages based on unrounded data.

**Commercial Calf Slaughter: By State and United States,
October 2007 and 2008 ¹**

State	Number Slaughtered		Total Live Weight		Average Live Weight	
	2007	2008	2007	2008	2007	2008
	<i>1,000 Head</i>	<i>1,000 Head</i>	<i>1,000 Pounds</i>	<i>1,000 Pounds</i>	<i>Pounds</i>	<i>Pounds</i>
AL						
AK						
AZ						
AR						
CA	9.7	18.8	1,270	2,146	132	116
CO						
DE-MD	0.2	0.2	52	54	293	275
FL						
GA	0.1	0.1	28	48	384	452
HI						
ID						
IL	3.1	6.4	1,270	1,415	416	224
IN						
IA		0.1		17		335
KS						
KY		0.1		28		532
LA	0.4	0.6	209	282	486	510
MI	2.3	1.3	942	581	420	436
MN						
MS						
MO		0.1		22		381
MT						
NE						
NV						
N ENG ²	0.1	0.3	41	72	281	274
NJ	4.5	5.7	1,809	2,357	402	414
NM	0.1	2.6	16	223	245	87
NY	16.9	23.7	1,722	2,275	106	99
NC	0.2	0.1	99	73	452	513
ND						
OH	0.1	5.4	35	2,426	350	454
OK						
OR						
PA	14.6	15.5	5,951	5,105	407	330
SC						
SD						
TN	0.1	0.1	38	47	422	534
TX	1.6	2.3	761	884	492	383
UT						
VA	0.1		21		335	
WA						
WV						
WI						
WY						
US ³	65.3	95.7	18,607	23,055	288	244

¹ Includes slaughter under Federal inspection and other Commercial slaughter, excludes farm slaughter.

² N ENG includes CT, ME, MA, NH, RI, and VT.

³ States with no data printed are still included in the US total, data not printed to avoid disclosing individual operations. Accumulated totals and percentages based on unrounded data.

**Commercial Hog Slaughter: By State and United States,
October 2007 and 2008 ¹**

State	Number Slaughtered		Total Live Weight		Average Live Weight	
	2007	2008	2007	2008	2007	2008
	<i>1,000 Head</i>	<i>1,000 Head</i>	<i>1,000 Pounds</i>	<i>1,000 Pounds</i>	<i>Pounds</i>	<i>Pounds</i>
AL	8.7	6.7	3,798	2,911	438	438
AK						
AZ	0.3	0.1	52	34	206	248
AR	18.1	18.0	8,189	8,175	453	456
CA	239.7	253.0	58,132	61,324	243	243
CO	1.0	1.0	248	265	260	258
DE-MD	1.8	1.5	452	370	248	254
FL	8.7	6.2	1,173	936	136	150
GA	12.9	7.3	2,947	1,856	229	254
HI	1.6	1.6	359	375	221	231
ID	14.4	14.6	3,656	3,708	256	254
IL	1,006.2	1,002.8	280,476	275,709	279	275
IN	759.1	791.7	199,179	208,399	263	263
IA	2,965.5	3,023.8	802,754	810,436	271	268
KS	19.4		8,495		440	
KY	269.0		72,188		269	
LA	1.6	1.3	279	238	178	181
MI	10.6	11.1	3,871	4,243	367	382
MN	910.6	912.5	240,168	240,025	264	264
MS		7.2		2,171		300
MO	669.0	710.9	184,023	194,181	275	273
MT	1.2	1.1	313	273	264	246
NE	724.3	726.9	195,691	195,878	270	270
NV						
N ENG ²	1.9	2.1	422	494	227	239
NJ	9.7	8.9	893	847	92	95
NM	0.1	0.3	36	79	270	274
NY	3.1	3.0	580	591	188	198
NC	1,121.2	1,132.1	289,590	293,447	259	259
ND	10.9	11.1	2,777	2,847	254	258
OH	104.0	101.9	28,135	27,869	271	274
OK	459.5	488.1	124,329	134,808	271	276
OR	18.0	14.4	4,439	3,636	247	253
PA	272.1	276.0	69,500	72,110	256	262
SC						
SD	506.4	459.8	129,362	118,283	256	257
TN	66.8	73.6	31,305	34,441	469	469
TX	42.0	39.2	10,595	10,343	252	264
UT	6.4	5.6	1,148	1,106	179	199
VA	248.8	210.7	65,615	56,086	264	266
WA	2.4	2.3	497	518	205	223
WV	1.0	0.9	265	227	258	246
WI	51.1	51.4	22,146	22,377	440	442
WY	0.2	0.2	55	47	265	257
US ³	10,656.6	10,750.7	2,870,727	2,893,860	270	269

¹ Includes slaughter under Federal inspection and other Commercial slaughter, excludes farm slaughter.

² N ENG includes CT, ME, MA, NH, RI, and VT.

³ States with no data printed are still included in the US total, data not printed to avoid disclosing individual operations. Accumulated totals and percentages based on unrounded data.

**Commercial Sheep and Lamb Slaughter: By State and United States,
October 2007 and 2008 ¹**

State	Number Slaughtered		Total Live Weight		Average Live Weight	
	2007	2008	2007	2008	2007	2008
	<i>1,000 Head</i>	<i>1,000 Head</i>	<i>1,000 Pounds</i>	<i>1,000 Pounds</i>	<i>Pounds</i>	<i>Pounds</i>
AL						
AK						
AZ		0.1		14		102
AR	0.1	0.1	7	11	97	118
CA						
CO	93.5	87.5	13,629	13,054	146	149
DE-MD	3.1	3.1	314	295	100	94
FL	0.2	0.3	17	15	76	58
GA	0.4	0.4	47	37	116	95
HI						
ID	0.5	0.6	55	69	122	118
IL						
IN	2.6	2.1	280	239	109	112
IA	38.2	35.3	5,493	4,950	144	140
KS	0.3	0.4	39	44	112	111
KY	1.0	1.0	130	120	126	123
LA	0.3	0.3	24	22	74	69
MI	18.3	16.6	2,333	2,073	128	125
MN	0.4	1.4	51	176	122	127
MS						
MO	0.6	0.6	61	70	105	115
MT	0.5	0.5	52	53	111	106
NE		0.1		13		139
NV	0.1		6		121	
N ENG ²	3.4	2.9	313	265	92	92
NJ	11.8	10.1	987	836	84	83
NM	1.4	1.2	187	160	135	139
NY	3.2	3.0	267	253	83	85
NC	0.8	0.8	63	62	80	82
ND	0.1	0.1	6	13	111	118
OH	1.5	1.4	158	144	105	106
OK	0.1	0.2	10	14	83	92
OR	2.5	2.2	318	300	130	135
PA	4.9	4.5	477	455	97	101
SC						
SD	1.3	0.2	173	29	133	120
TN	1.3	1.2	102	102	76	82
TX	3.9	4.4	428	419	109	95
UT	3.2	3.0	422	405	133	135
VA	1.6	1.5	160	147	102	100
WA	0.9	0.9	120	112	135	131
WV		0.6		92		143
WI	1.8	1.5	224	190	126	128
WY	0.1	0.1	15	12	170	143
US ³	248.4	225.0	32,760	29,885	132	133

¹ Includes slaughter under Federal inspection and other Commercial slaughter, excludes farm slaughter.

² N ENG includes CT, ME, MA, NH, RI, and VT.

³ States with no data printed are still included in the US total, data not printed to avoid disclosing individual operations. Accumulated totals and percentages based on unrounded data.

**Classification of Livestock Slaughtered Under Federal Inspection:
United States**

Item	Oct 2007	Sep 2008	Oct 2008	Jan - Oct ¹		Oct 2007	Sep 2008	Oct 2008	Jan - Oct ¹	
	1,000 Head	1,000 Head	1,000 Head	1,000 Head	1,000 Head	Percent of Total	Percent of Total	Percent of Total	Percent of Total	Percent of Total
Class ²										
Cattle										
Steers	1,481	1,422	1,397	14,666	14,541	48.6	50.0	47.6	51.8	50.7
Heifers	970	835	898	8,535	8,517	31.8	29.4	30.6	30.1	29.7
All Cows	541	527	583	4,665	5,130	17.8	18.5	19.9	16.5	17.9
Dairy Cows	245	224	236	2,075	2,154	8.0	7.9	8.1	7.3	7.5
Other Cows	297	303	347	2,590	2,975	9.7	10.7	11.8	9.1	10.4
Bulls	54	59	55	466	520	1.8	2.1	1.9	1.6	1.8
Total ¹	3,046	2,842	2,933	28,331	28,707	100.0	100.0	100.0	100.0	100.0
Calves & Vealers	64	86	94	627	770	100.0	100.0	100.0	100.0	100.0
Hogs										
Barrow & Gilts	10,203	*9,544	10,307	85,417	92,745	96.7	96.6	96.7	96.4	96.5
Sows	311	298	310	2,755	2,983	2.9	3.0	2.9	3.1	3.1
Boars	41	36	40	401	394	0.4	0.4	0.4	0.5	0.4
Total ¹	10,555	*9,878	10,657	88,573	96,121	100.0	100.0	100.0	100.0	100.0
Sheep										
Mature Sheep	11	11	10	95	102	4.7	5.5	4.8	4.5	5.1
Lambs & Yrlngs	221	196	199	1,999	1,898	95.3	94.5	95.2	95.5	94.9
Total ¹	232	207	209	2,094	2,001	100.0	100.0	100.0	100.0	100.0
Average Dressed Weight										
	<i>Pounds</i>	<i>Pounds</i>	<i>Pounds</i>	<i>Pounds</i>	<i>Pounds</i>					
Cattle	793	790	788	773	776					
Steers ³	858	859	860	826	835					
Heifers ³	792	786	795	759	768					
All Cows ³	607	598	597	619	611					
Bulls ³	865	890	866	898	891					
Calves & Vealers	170	146	142	184	153					
Hogs	202	199	201	201	201					
Barrow Gilts ⁴	199	195	198	197	197					
Sows ⁴	306	306	308	308	308					
Boars ⁴	215	211	211	213	210					
Sheep	67	66	68	69	70					
Mature Sheep ⁵	67	66	66	67	67					
Lamb & Yrlngs ⁵	67	66	68	69	70					

* Revised.

¹ Total and percentages based on unrounded data.

² Species totals and classification reported by food inspectors, Inspection Operations, FSIS.

³ Included in cattle average dressed weight.

⁴ Included in hog average dressed weight.

⁵ Included in sheep average dressed weight.

**Federally Inspected Slaughter: By Region and United States,
October 2008¹**

Standard Federal Regions	Cattle							Calves
	Total ²	Steers	Heifers	Cows			Bulls	Total
				All	Dairy	Other		
	<i>1,000 Head</i>	<i>1,000 Head</i>	<i>1,000 Head</i>	<i>1,000 Head</i>	<i>1,000 Head</i>	<i>1,000 Head</i>	<i>1,000 Head</i>	<i>1,000 Head</i>
1	1.3	0.6	0.2					0.3
2	5.6	2.1	0.4	2.7	2.1	0.5	0.5	29.4
3	95.1	35.2	7.6	50.0	39.8	10.2	2.4	15.8
4	81.1	1.7	0.6	67.1	11.7	55.4	11.7	0.3
5	370.7	154.8	45.6	158.7	80.2	78.6	11.6	24.1
6	585.1	290.7	185.2	97.8	15.5	82.3	11.3	4.5
7	1,213.3	647.5	493.3	64.8	1.5	63.3	7.7	0.1
8	269.7	134.1	114.5					
9	184.6	86.2	9.9	85.6	64.5	21.1	3.0	18.6
10	126.9	44.3	40.8	37.5	14.2	23.4	4.3	
US ²	2,933.4	1,397.0	898.1	583.1	236.2	347.0	55.2	93.9
	Hogs				Sheep			
	Total ²	Barrows & Gilts	Sows	Boars	Total ²	Mature Sheep	Lambs & Yearlings	
	<i>1,000 Head</i>	<i>1,000 Head</i>	<i>1,000 Head</i>	<i>1,000 Head</i>	<i>1,000 Head</i>	<i>1,000 Head</i>	<i>1,000 Head</i>	
1	1.5	1.5			2.6	0.2	2.4	
2	11.5	11.2	0.2	0.1	12.3	1.3	11.1	
3	486.6	472.2	2.2	12.1	9.4	0.8	8.7	
4	1,563.6	1,467.2	94.9	1.5	3.7	1.0	2.7	
5	2,831.2	2,707.0	120.5	3.8	28.0	2.9	25.1	
6	537.3	510.1	26.3	0.9				
7	4,473.0	4,386.2	65.1	21.7	35.9	0.5	35.4	
8	473.9	473.4	0.5		89.9	1.6	88.3	
9	248.3	248.2						
10	30.3	30.2	0.1		2.7	0.2	2.6	
US ²	10,657.2	10,307.3	309.8	40.1	209.4	10.1	199.3	

¹ States included in regions are as follows: 1- CT, ME, NH, VT, MA, & RI; 2- NY & NJ; 3- DE-MD, PA, WV, & VA; 4- AL, FL, GA, KY, MS, NC, SC, & TN; 5- IL, IN, MI, MN, OH, & WI; 6- AR, LA, NM, OK, & TX; 7- IA, KS, MO, & NE; 8- CO, MT, ND, SD, UT, & WY; 9- AZ, CA, HI & NV; 10- AK, ID, OR, & WA.

² Regions with no data printed are still included in the US and Region total, data not printed to avoid disclosing individual operations. Totals may not add due to rounding.

**Federally Inspected Slaughter: By Region and United States,
January - October 2008 ¹**

Standard Federal Regions	Cattle							Calves
	Total ²	Steers	Heifers	Cows			Bulls	Total
				All	Dairy	Other		
	<i>1,000 Head</i>	<i>1,000 Head</i>	<i>1,000 Head</i>	<i>1,000 Head</i>	<i>1,000 Head</i>	<i>1,000 Head</i>	<i>1,000 Head</i>	<i>1,000 Head</i>
1	9.5	4.2	1.7					2.0
2	48.2	16.7	2.9	24.9	20.6	4.3	3.7	236.4
3	863.0	350.0	76.9	414.4	329.0	85.4	21.8	136.2
4	733.0	13.0	4.5	615.4	114.0	501.4	100.1	3.5
5	3,443.8	1,514.5	432.3	1,397.9	712.1	685.8	99.1	192.2
6	5,746.4	3,025.8	1,766.5	839.0	146.7	692.3	115.2	27.2
7	12,122.9	6,797.6	4,616.9	625.9	15.3	610.5	82.5	0.6
8	2,828.4	1,477.1	1,158.7					
9	1,763.3	886.0	119.1	728.1	618.4	109.7	30.1	160.9
10	1,148.7	456.0	337.1	311.7	137.6	174.1	43.8	
US ²	28,707.2	14,540.8	8,516.6	5,129.7	2,154.2	2,975.5	520.1	769.5
	Hogs				Sheep			
	Total ²	Barrows & Gilts	Sows	Boars	Total ²	Mature Sheep	Lambs & Yearlings	
	<i>1,000 Head</i>	<i>1,000 Head</i>	<i>1,000 Head</i>	<i>1,000 Head</i>	<i>1,000 Head</i>	<i>1,000 Head</i>	<i>1,000 Head</i>	
1	12.5	12.0			20.8	1.3	19.5	
2	110.3	107.5	1.5	1.2	138.8	13.7	125.0	
3	4,553.7	4,404.8	24.7	124.2	91.1	5.4	85.7	
4	13,881.3	13,126.2	738.5	16.7	34.3	10.4	23.9	
5	25,447.8	24,140.3	1,272.2	35.3	300.6	31.9	268.7	
6	4,823.7	4,567.6	247.9	8.3				
7	40,691.5	39,795.2	689.0	207.4	298.8	4.4	294.4	
8	4,113.2	4,106.3	6.8	0.1	821.7	15.8	805.8	
9	2,194.8	2,193.7						
10	292.1	291.0	1.0	0.1	23.6	1.5	22.1	
US ²	96,121.0	92,744.6	2,982.8	393.6	2,001.0	102.5	1,898.5	

¹ States included in regions are as follows: 1- CT, ME, NH, VT, MA, & RI; 2- NY & NJ; 3- DE-MD, PA, WV, & VA; 4- AL, FL, GA, KY, MS, NC, SC, & TN; 5- IL, IN, MI, MN, OH, & WI; 6- AR, LA, NM, OK, & TX; 7- IA, KS, MO, & NE; 8- CO, MT, ND, SD, UT, & WY; 9- AZ, CA, HI & NV; 10- AK, ID, OR, & WA.

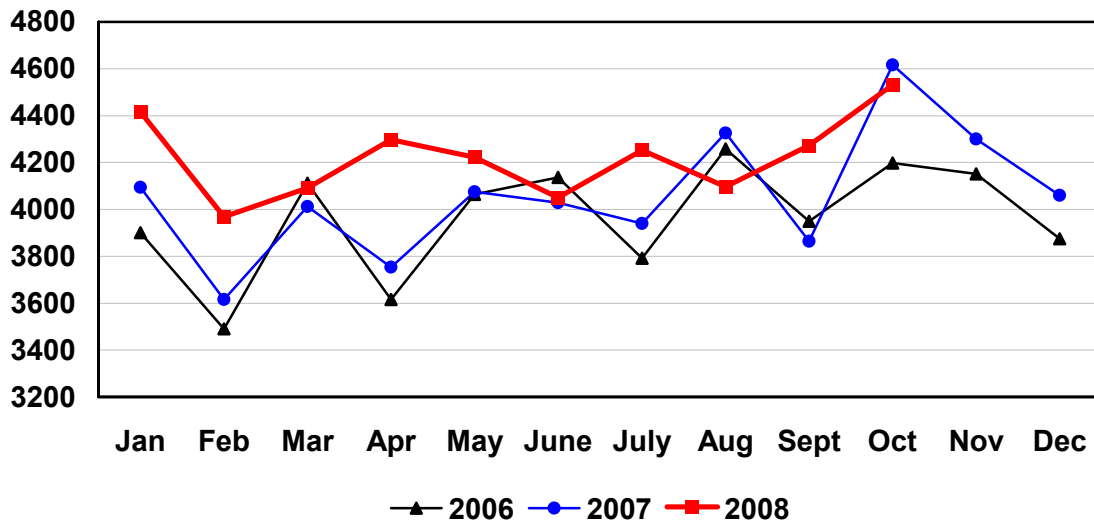
² Regions with no data printed are still included in the US and Region total, data not printed to avoid disclosing individual operations. Totals may not add due to rounding.

Federally Inspected Slaughter: Percent of Total Commercial Slaughter by Species, United States

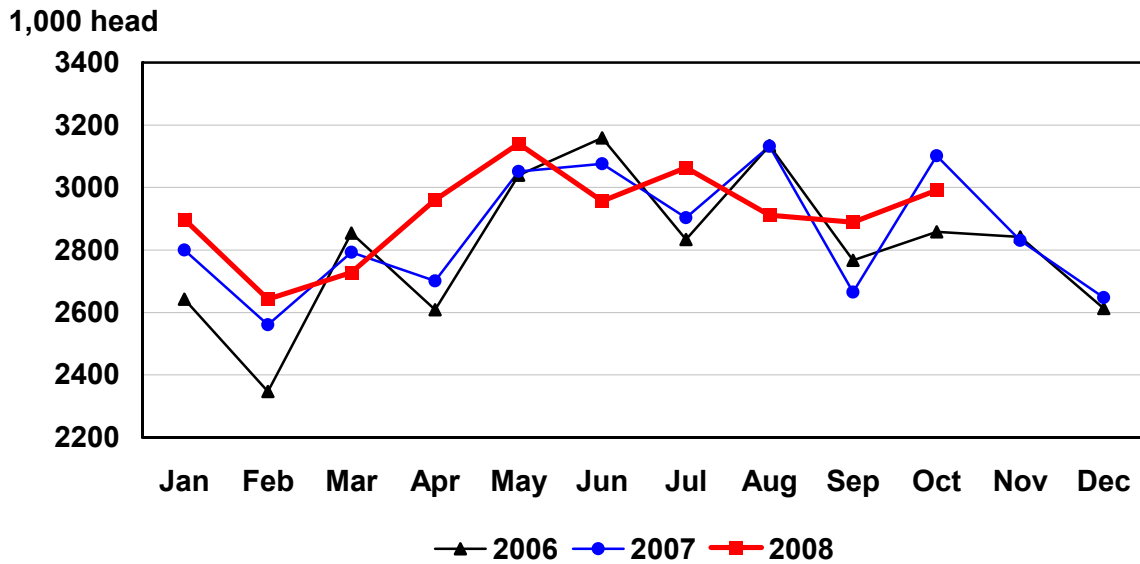
Species	Oct 2007	Sep 2008	Oct 2008	Jan - Oct	
	Percent	Percent	Percent	2007	2008
Cattle	98.2	98.4	98.1	98.4	98.4
Calves	97.6	98.4	98.1	98.3	98.4
Hogs	99.0	99.1	99.1	99.0	99.1
Sheep	93.5	93.6	93.1	94.0	93.9

U.S. Monthly Commercial Red Meat Production

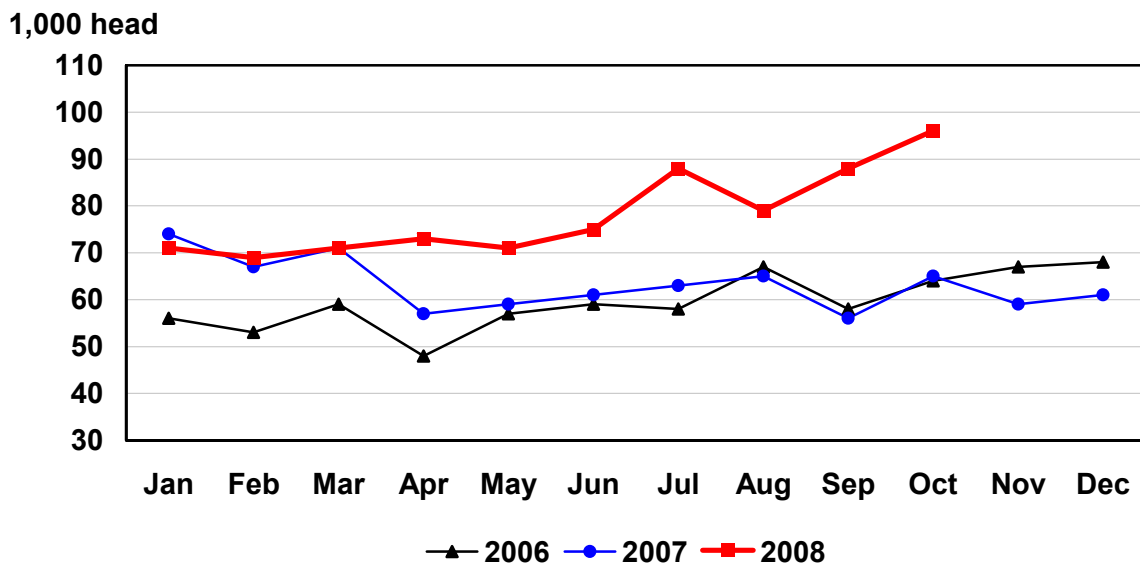
Million Pounds



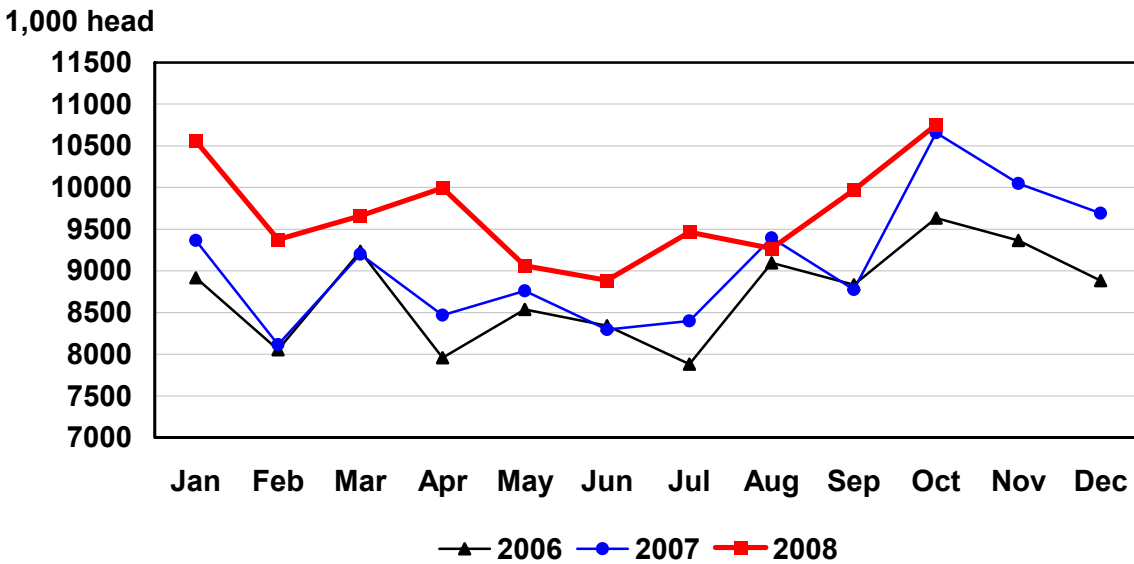
U.S. Monthly Commercial Slaughter Cattle



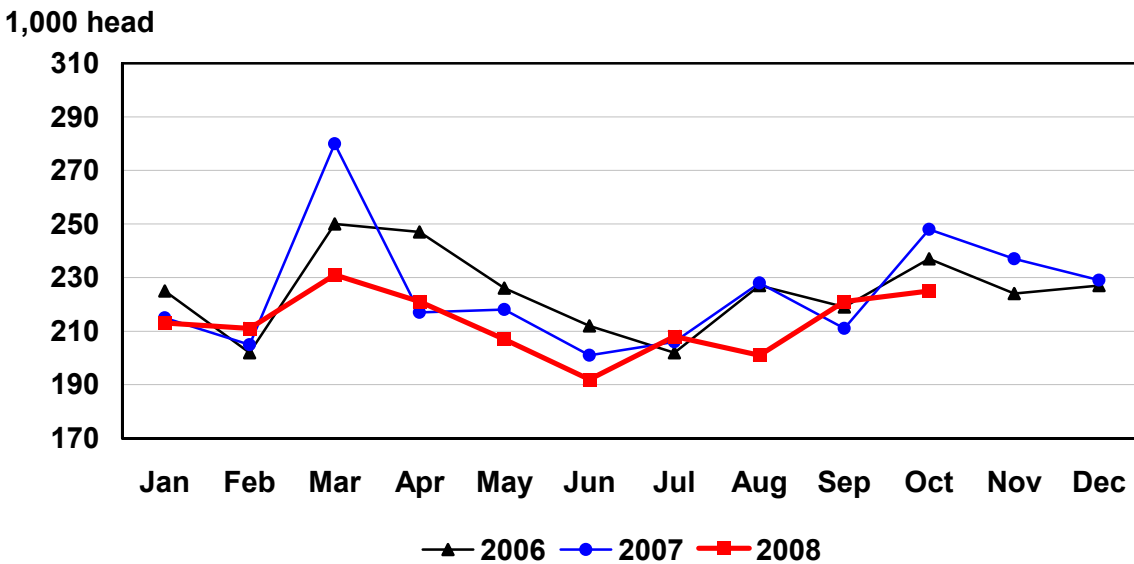
U.S. Monthly Commercial Slaughter Calves



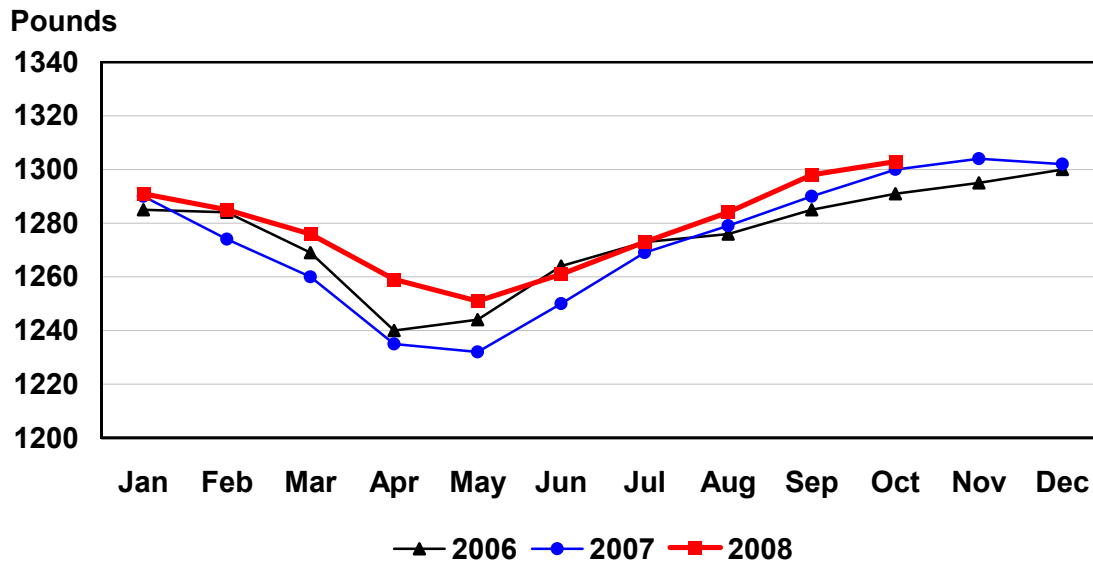
U.S. Monthly Commercial Slaughter Hogs



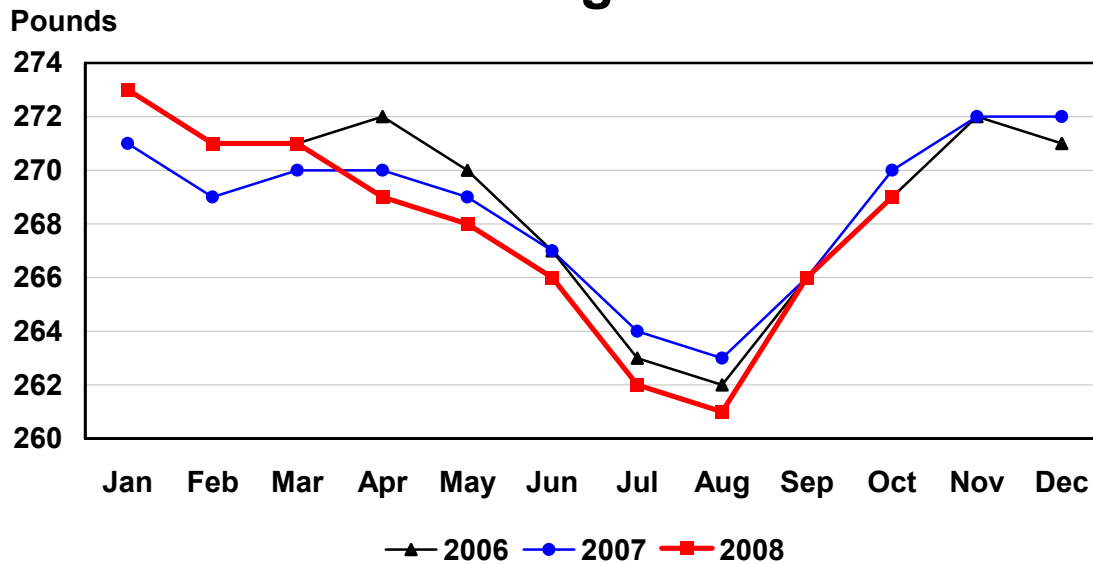
U.S. Monthly Commercial Slaughter Sheep



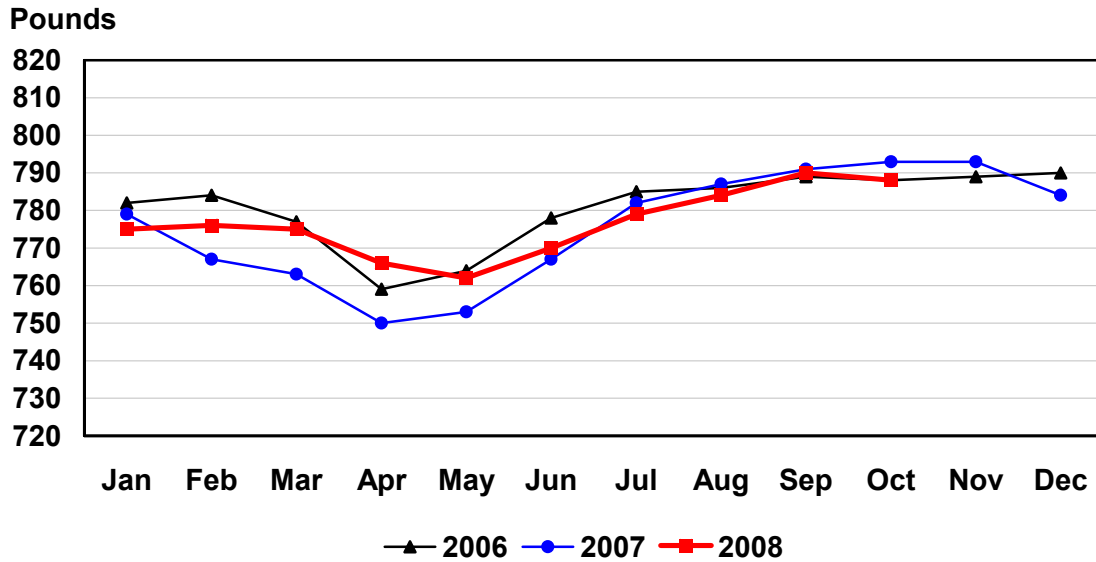
U.S. Monthly Commercial Slaughter Average Live Weight Cattle



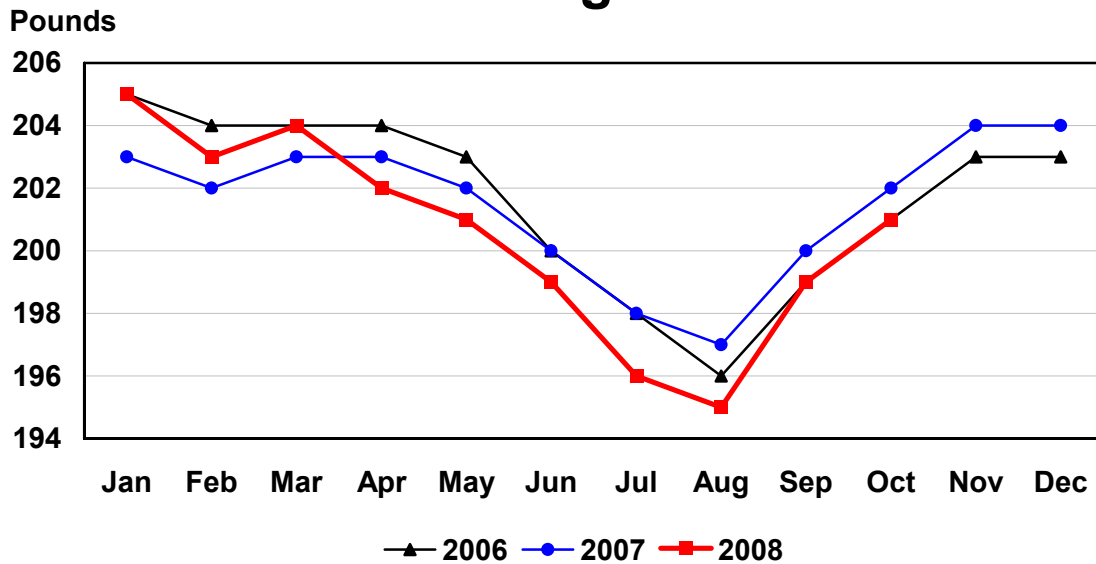
U.S. Monthly Commercial Slaughter Average Live Weight Hogs



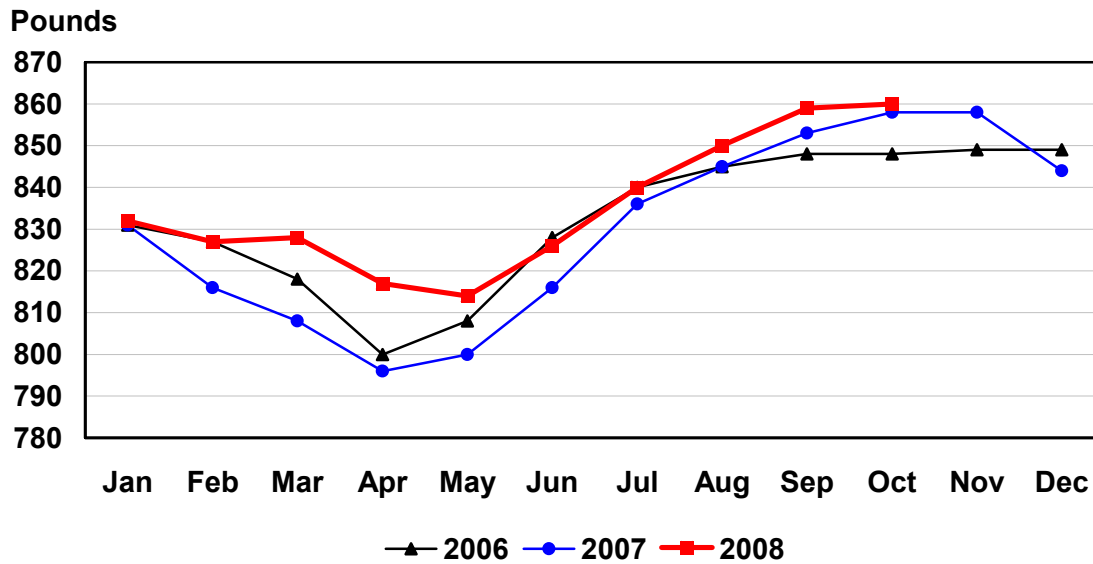
U.S. Monthly Federally Inspected Average Dressed Weight Cattle



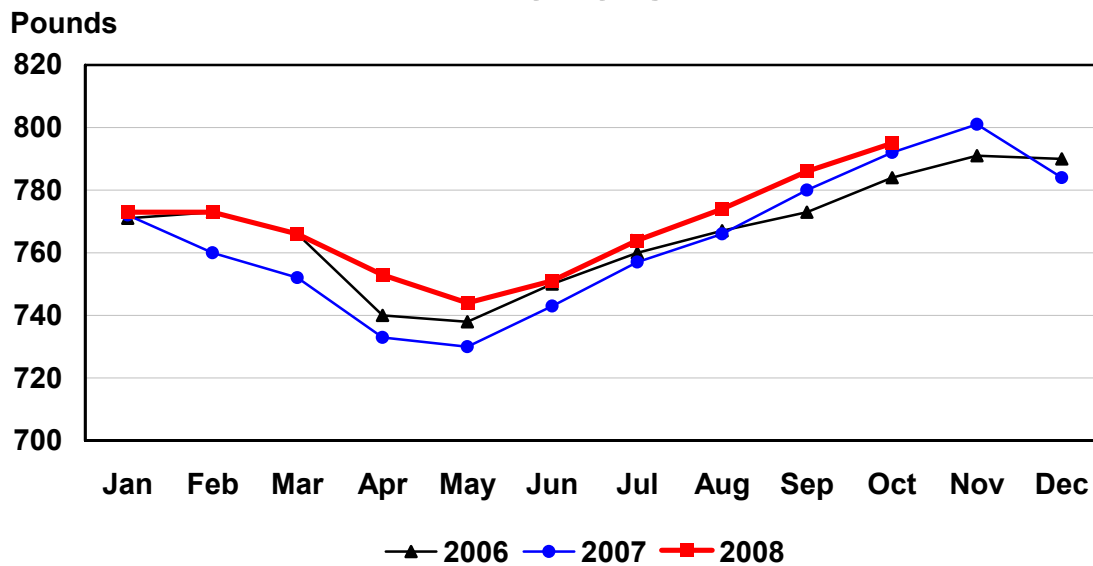
U.S. Monthly Federally Inspected Average Dressed Weight Hogs



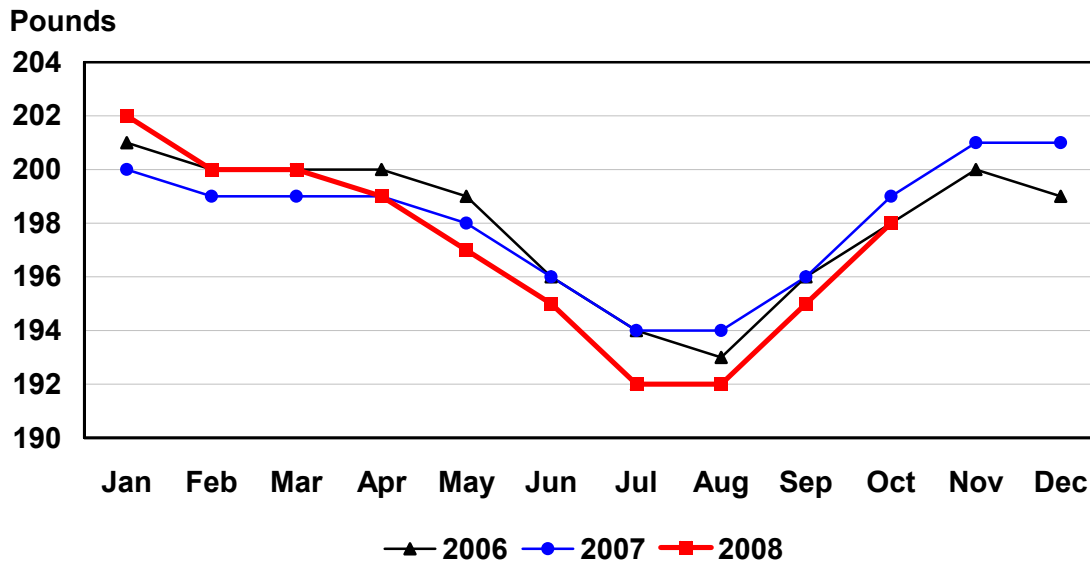
U.S. Monthly Federally Inspected Average Dressed Weight Steers



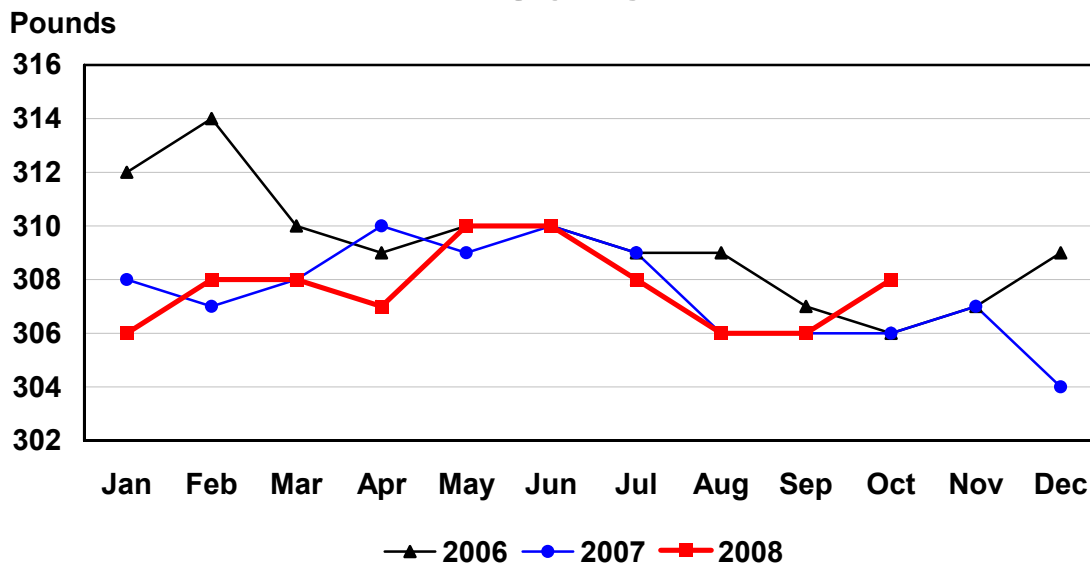
U.S. Monthly Federally Inspected Average Dressed Weight Heifers



U.S. Monthly Federally Inspected Average Dressed Weight Barrows and Gilts



U.S. Monthly Federally Inspected Average Dressed Weight Sows



Reliability of Livestock Slaughter Estimates

Data Sources: Primary data for the commercial livestock slaughter estimates are obtained from electronic reports completed by inspectors from the Food Safety and Inspection Service (FSIS), USDA, which provide daily counts of animals slaughtered in Federally Inspected (FI) plants, in addition to total live and dressed weights. These counts are combined with data from State-administered Non-Federally Inspected (NFI) slaughter plants to derive total commercial slaughter estimates. More than 95 percent of the total U.S. slaughter for any species is under Federal Inspection.

There are nearly 800 livestock slaughter plants in the U.S. operating under Federal Inspection and over 2,000 Non-Federally Inspected (State-inspected or custom-exempt) slaughter plants. Slaughter from State-inspected Talmedge-Aiken plants is included in FI totals (see Types of Plants, page 20). To prevent duplication in reporting between FI and NFI plants and assure all FI plants are included, certificates prepared by FSIS identifying operating status are constantly monitored

Revision Policy: Number of head slaughtered, live weights, and dressed weights are subject to revision the following month after the monthly release. Annual totals are published in the slaughter summary each March which includes any revisions made to current and previous year's published data. Revisions are generally the result of late reports received from slaughter plants and are usually less than one-half of one percent. No revisions will be made to the previous year's data after the publication of the annual summary in March.

Procedures and Reliability: The livestock slaughter data is obtained electronically on a daily basis and summarized approximately two weeks after the week of slaughter. An edit compares each plant's data with the historical data for that plant. Data are checked for unusual values for head kill, patterns of kill, average weights, and dressing percent, based on each plant's past operating profile. In addition, the edit provides a listing of missing reports for follow-up contact with FSIS. Average live and dressed weights and dressing percentages by State are compared with the previous weeks as an additional check. Fluctuations are frequently the result of plants permanently or temporarily closing and a shift in the species reported.

The FSIS District Veterinary Medical Specialists (DVMS) are contacted by e-mail or telephone for missing or potentially erroneous slaughter data. This assures that plants slaughtering a large number of head or several species are accounted for each week. Any corrections FSIS makes to the slaughter data are included in the summary.

Imputation may be necessary for incomplete reports. The imputation of live and dressed weights is based on the current week reported data of plants of similar size and location. Imputation for live and dressed weight data for cattle and hogs is less than 10 percent and 7 percent, respectively. The imputation for calves and sheep is more frequent and variable. If no data is received electronically or by other means, for plants slaughtering fewer than 50 total head weekly of only one species, data are imputed. The imputation of head for any plant is based on the historical data for that particular plant. The imputation of head slaughtered is rare but when necessary, the imputed head kill for missing plants usually is less than 1 percent of the U.S. head kill totals.

FI data are summarized weekly and accumulated to a monthly total for this release. These weekly totals are published by USDA's Agricultural Marketing Service (AMS) in **Livestock, Meat, Wool Market News**, Weekly Summary, and Statistics and are also available on the NASS website. NFI data are summarized monthly only.

Livestock slaughter estimates are based on a census of operating plants and therefore, have no sampling error. However, they may be subject to errors such as omissions, duplications and mistakes in reporting, recording and processing the data. These errors are minimized through rigid quality controls in the edit and summarization process, and a careful review of all reported data for consistency and reasonableness.

No data are published when an individual plant's data could be divulged. If not published, these data are still included in US and region totals. A review of the data is made annually to determine the publishable data.

Types of Livestock Slaughter Plants

There are generally **four types** of slaughtering plants.

- (1) **Federally Inspected (FI) Plants:** Plants that transport meat interstate must employ federal inspectors to assure compliance with USDA standards. Any State whose commercial plants operate entirely under federal inspection may still have custom-exempt establishments for which NFI estimates are made.
- (2) **Talmedge-Aiken (TA) Plants:** Slaughter plants in which USDA is responsible for inspection. However, federal inspection is carried out by State employees. These plants are considered to be federally inspected.
- (3) **Non-Federally Inspected (NFI) Plants:** Plants which sell and transport only intrastate. State inspectors assure compliance with individual State standards for these NFI plants. Mobile slaughtering units are excluded and are considered farm slaughter.
- (4) **Custom-Exempt Plants:** Plants that do not sell meat but operate on a custom basis only are custom-exempt. The animals and meat are not inspected, but the facilities must meet health standards. These are considered NFI plants and head kill is included in NFI totals.

Terms and Definitions Used for Livestock Slaughter Estimates

Average Live Weight: Excludes post-mortem condemnations

Commercial Production: Includes slaughter and meat production in federally inspected and other plants, but excludes animals slaughtered on farms.

Dressed Weight: The weight of a chilled animal carcass. Beef with kidney knob in; veal with hide off; lamb and mutton with pluck out; pork with leaf fat and kidneys out, jowls on and head off.

Dressing Percent: Usually expressed as a percentage yield of chilled carcass in relation to the weight of the live animal on hoof. For example, a live hog that weighed 200 pounds on hoof and yielded a carcass weighing 140 pounds would have a dressing percentage of 70.

Food and Meat Inspection: Includes examination, checking, or testing of a carcass and/or meat against established government standards and involves checking the facility for cleanliness, health of animals, or parts of animals and quality of the meat produced.

Number of Head: Includes post-mortem condemnations.

Plant, Slaughter: An establishment where animals are killed and butchered.

Red Meat: Red meat production is the carcass weight after slaughter excluding condemnation and is comprised of beef, veal, pork, and lamb and mutton. The FI red meat production is equal to the total carcass weight after slaughter. The NFI meat production formula is (NFI head kill) X (live weight) X (FI dressing percentage) = NFI red meat production.

Slaughter: Killing and butchering of animals primarily for food.

Slaughter, Farm: Animals slaughtered on farms primarily for home consumption. Excludes custom slaughter for farmers at commercial establishments, but includes mobile slaughtering on farms. These estimates appear only in the annual slaughter release.

Total Live Weight: Excludes post-mortem condemnations.

Wholesome Meat Act: Legislation that specifies that all meat produced for sale in the U.S. must be inspected. Meat that is transported interstate must be inspected in compliance with Federal (USDA) Standards.

Information Contacts

Listed below are the commodity specialists in the Livestock Branch of the National Agricultural Statistics Service to contact for additional information.

Dan Kerestes, Chief, Livestock Branch.....	(202) 720-3570
Scott Hollis, Head, Livestock Section.....	(202) 690-2424
Jim Collom – Dairy Products.....	(202) 690-3236
Joe Gaynor – Dairy Products Prices.....	(202) 690-2168
Jason Hardegree – Cattle, Cattle on Feed.....	(202) 720-3040
Benita Hodge – Livestock Slaughter.....	(515) 284-4340
Mike Miller – Milk Production and Milk Cows.....	(202) 720-3278
Everett Olbert – Sheep and Goats.....	(202) 720-4751
Nicholas Streff – Hogs and Pigs.....	(202) 720-3106

ACCESS TO REPORTS!!

For your convenience, there are several ways to obtain NASS reports, data products, and services:

INTERNET ACCESS

All NASS reports are available free of charge on the worldwide Internet. For access, connect to the Internet and go to the NASS Home Page at: www.nass.usda.gov.

E-MAIL SUBSCRIPTION

All NASS reports are available by subscription free of charge direct to your e-mail address. Starting with the NASS Home Page at www.nass.usda.gov, under the right navigation, *Receive reports by Email*, click on **National** or **State**. Follow the instructions on the screen.

PRINTED REPORTS OR DATA PRODUCTS

CALL OUR TOLL-FREE ORDER DESK: 800-999-6779 (U.S. and Canada)
Other areas, please call 703-605-6220 FAX: 703-605-6900
(Visa, MasterCard, check, or money order acceptable for payment.)

ASSISTANCE

For **assistance** with general agricultural statistics or further information about NASS or its products or services, contact the **Agricultural Statistics Hotline** at **800-727-9540**, 7:30 a.m. to 4:00 p.m. ET, or e-mail: nass@nass.usda.gov.

The U.S. Department of Agriculture (USDA) prohibits discrimination in all its programs and activities on the basis of race, color, national origin, age, disability, and where applicable, sex, marital status, familial status, parental status, religion, sexual orientation, genetic information, political beliefs, reprisal, or because all or part of an individual's income is derived from any public assistance program. (Not all prohibited bases apply to all programs.) Persons with disabilities who require alternative means for communication of program information (Braille, large print, audiotope, etc.) should contact USDA's TARGET Center at (202) 720-2600 (voice and TDD).

To file a complaint of discrimination, write to USDA, Director, Office of Civil Rights, 1400 Independence Avenue, S.W., Washington, D.C. 20250-9410, or call (800) 795-3272 (voice) or (202) 720-6382 (TDD). USDA is an equal opportunity provider and employer.