



Livestock Slaughter

Released December 29, 2008, by the National Agricultural Statistics Service (NASS), Agricultural Statistics Board, U.S. Department of Agriculture. For information on *Livestock Slaughter* call Benita Hodge at (515) 284-4340, office hours 7:00 a.m. to 4:00 p.m. CT.

November Total Red Meat Production Below Previous Year

Commercial red meat production for the United States totaled 3.87 billion pounds in November, down 10 percent from the 4.30 billion pounds produced in November 2007.

Beef production, at 1.96 billion pounds, was 12 percent below the previous year. Cattle slaughter totaled 2.52 million head, down 11 percent from November 2007. The average live weight was down 2 pounds from the previous year, at 1,302 pounds.

Veal production totaled 11.3 million pounds, 13 percent above November a year ago. Calf slaughter totaled 81,400 head, up 38 percent from November 2007. The average live weight was down 51 pounds from last year, at 240 pounds.

Pork production totaled 1.89 billion pounds, down 8 percent from the previous year. Hog kill totaled 9.32 million head, down 7 percent from November 2007. The average live weight was down 1 pound from the previous year, at 271 pounds.

Lamb and mutton production, at 12.9 million pounds, was down 20 percent from November 2007. Sheep slaughter totaled 193,700 head, 18 percent below last year. The average live weight was 133 pounds, down 3 pounds from November a year ago.

January to November 2008 commercial red meat production was 46.1 billion pounds, up 3 percent from 2007. Accumulated beef production was up 1 percent from last year, veal was up 2 percent, pork was up 7 percent from last year, and lamb and mutton production was down 5 percent.

November 2007 contained 22 weekdays (including two holidays) and 4 Saturdays.

November 2008 contained 20 weekdays (including two holidays) and 5 Saturdays.

Contents

	Page
Red Meat Production, Commercial and FI, by Type, U.S.	1
Livestock Slaughter, Number and Average Weights, by Species and Type of Slaughter, U.S.	2
Commercial Red Meat Production, by State and U.S.	3
Commercial Cattle Slaughter, Number, Total and Average Live Weight, by State and U.S.	4
Commercial Calf Slaughter, Number, Total and Average Live Weight, by State and U.S.	5
Commercial Hog Slaughter, Number, Total and Average Live Weight, by State and U.S.	6
Commercial Sheep and Lamb Slaughter, Number, Total and Average Live Weight, by State and U.S.	7
Federally Inspected Classification of Number and Average Dressed Weight, by Species and Class and U.S.	8
Federally Inspected Slaughter by Species and Class, by Region and U.S.	9
Federally Inspected Percent of Total Commercial, by Species, U.S.	11
Reliability Statement.....	18
Types of Plants.....	19
Terms and Definitions	20
Information Contacts	20

Commercial Red Meat Production: United States ¹

Type	Nov 2007	Oct 2008	Nov 2008	Nov 08 % of		Jan - Nov ²		
				Nov 2007	Oct 2008	2007	2008	08 as % of 07
	<i>Million Pounds</i>	<i>Million Pounds</i>	<i>Million Pounds</i>	<i>Percent</i>	<i>Percent</i>	<i>Million Pounds</i>	<i>Million Pounds</i>	<i>Percent</i>
Beef	2,228.8	2,342.0	1,960.9	88	84	24,359.1	24,482.5	101
Veal	10.1	13.6	11.3	113	83	126.8	130.0	102
Pork	2,045.2	*2,160.1	1,886.5	92	87	19,970.1	21,296.0	107
Lamb & Mutton	16.1	15.0	12.9	80	86	167.8	158.5	95
Total Red Meat ³	4,300.2	*4,530.7	3,871.6	90	85	44,623.8	46,067.0	103

* Revised.

¹ Based on packers' dressed weights and excludes farm slaughter.

² Accumulated totals and percentages based on unrounded data.

³ Totals may not equal sum of the parts due to rounding.

Federally Inspected Red Meat Production: United States ¹

Type	Nov 2007	Oct 2008	Nov 2008	Nov 08 % of		Jan - Nov ²		
				Nov 2007	Oct 2008	2007	2008	08 as % of 07
	<i>Million Pounds</i>	<i>Million Pounds</i>	<i>Million Pounds</i>	<i>Percent</i>	<i>Percent</i>	<i>Million Pounds</i>	<i>Million Pounds</i>	<i>Percent</i>
Beef	2,201.5	2,305.4	1,933.1	88	84	24,037.3	24,148.9	100
Veal	9.7	13.2	10.9	112	83	124.1	126.8	102
Pork	2,030.7	*2,144.1	1,873.7	92	87	19,810.6	21,133.3	107
Lamb & Mutton	15.4	14.2	12.2	79	86	160.2	151.1	94
Total Red Meat ³	4,257.4	*4,476.9	3,830.0	90	86	44,132.1	45,560.2	103

* Revised.

¹ Based on packers' dressed weights and excludes farm slaughter.

² Accumulated totals and percentages based on unrounded data.

³ Totals may not equal sum of the parts due to rounding.

Livestock Slaughter: Number and Average Weights, United States ¹

Species	Unit	Nov 2007	Oct 2008	Nov 2008	Nov 08 % of		Jan - Nov ²		
					Nov 2007	Oct 2008	2007	2008	08 % of 07
					<i>Percent</i>	<i>Percent</i>			
Cattle No.									
Fed. Insp.	Thou	2,787.3	2,933.4	2,475.0	89	84	31,118.2	31,182.2	100
Other	Thou	43.4	57.4	44.0	101	77	497.9	516.0	104
Comm'l. ³	Thou	2,830.7	2,990.8	2,519.0	89	84	31,616.1	31,698.2	100
Live Wt/Hd									
Fed. Insp.	Lbs	1,307	1,306	1,305	100	100	1,273	1,282	101
Other	Lbs	1,117	1,138	1,122	101	99	1,139	1,143	100
Comm'l.	Lbs	1,304	1,303	1,302	100	100	1,271	1,280	101
Calves No.									
Fed. Insp.	Thou	57.5	93.9	79.7	139	85	684.9	849.2	124
Other	Thou	1.4	1.8	1.7	118	94	12.1	13.9	115
Comm'l. ³	Thou	58.9	95.7	81.4	138	85	697.1	863.2	124
Live Wt/Hd									
Fed. Insp.	Lbs	287	241	236	82	98	305	256	84
Other	Lbs	430	424	424	99	100	400	410	103
Comm'l.	Lbs	291	244	240	83	98	307	259	84
Hogs No.									
Fed. Insp.	Thou	9,964.4	*10,653.5	9,249.5	93	87	98,537.6	105,366.8	107
Other	Thou	84.8	93.4	75.5	89	81	944.1	946.2	100
Comm'l. ³	Thou	10,049.2	*10,747.0	9,325.0	93	87	99,481.7	106,312.9	107
Live Wt/Hd									
Fed. Insp.	Lbs	273	270	271	99	101	269	268	100
Other	Lbs	237	238	237	100	100	234	238	102
Comm'l.	Lbs	272	269	271	99	101	268	268	100
Sheep&Lambs No.									
Fed. Insp.	Thou	222.5	209.4	179.9	81	86	2,316.4	2,180.9	94
Other	Thou	14.1	15.6	13.8	97	88	148.2	143.7	97
Comm'l. ³	Thou	236.7	225.0	193.7	82	86	2,464.6	2,324.6	94
Live Wt/Hd									
Fed. Insp.	Lbs	138	135	136	98	100	138	139	101
Other	Lbs	103	104	103	100	100	104	105	101
Comm'l.	Lbs	136	133	133	98	100	136	137	101
Goats No.									
Fed. Insp.	Thou	55.8	57.0	53.5	96	94	577.5	599.8	104
Other	Thou	15.0	18.9	19.4	130	103	170.7	178.9	105
Comm'l. ³	Thou	70.7	75.9	73.0	103	96	748.2	778.6	104
Live Wt/Hd									
Fed. Insp.	Lbs	62	61	62	100	101	61	62	101
Other	Lbs	51	70	74	146	106	56	65	117
Comm'l.	Lbs	59	63	65	110	103	60	62	104
Bison No.									
Fed. Insp.	Thou	4.2	4.1	4.0	94	97	46.5	50.3	108
Other	Thou	1.4	1.4	1.2	79	84	15.4	14.1	92
Comm'l. ³	Thou	5.7	5.5	5.2	91	94	61.9	64.5	104

* Revised.

¹ Excludes slaughter on farms.

² Accumulated totals and percentages based on unrounded data.

³ Totals may not equal sum of the parts due to rounding.

Commercial Red Meat Production: By State and United States ¹

State	Nov 2007	Oct 2008	Nov 2008	Nov 08 as % of ²	
				Nov 2007	Oct 2008
	<i>Million Pounds</i>	<i>Million Pounds</i>	<i>Million Pounds</i>	<i>Percent</i>	<i>Percent</i>
AL	2.1	1.9	1.6	76	86
AK	0.1	0.1	0.1	88	107
AZ	34.1	32.6	29.6	87	91
AR	5.6	5.8	3.9	69	66
CA	140.7	148.3	129.4	92	87
CO	165.5	177.1	149.8	91	85
DE-MD	3.1	3.2	3.0	99	96
FL	8.2	9.3	7.6	93	82
GA	13.5	14.8	12.2	90	83
HI	0.8	1.0	0.8	97	83
ID	18.8	22.9	18.4	98	80
IL	268.1	279.3	241.1	90	86
IN	147.0	160.2	138.7	94	87
IA	625.8	*650.3	555.5	89	85
KS	505.6	462.2	377.0	75	82
KY	51.8	56.7	49.1	95	87
LA	0.6	0.7	0.6	98	94
MI	42.1	44.3	42.1	100	95
MN	217.8	239.4	210.5	97	88
MS	1.2	1.6	1.1	95	72
MO	139.6	152.2	135.6	97	89
MT	1.5	1.4	1.4	88	96
NE	625.9	666.3	575.1	92	86
NV	0.1	0.1	0.1	167	76
N ENG ³	1.3	1.5	1.3	102	89
NJ	3.7	4.0	3.7	99	92
NM	0.3	0.6	0.5	172	88
NY	2.9	3.7	2.9	101	78
NC	217.0	232.0	207.5	96	89
ND	2.1	2.9	2.1	99	70
OH	24.0	28.2	23.4	98	83
OK	89.4	103.8	92.5	103	89
OR	4.8	5.4	4.6	95	85
PA	108.6	123.6	110.1	101	89
SC	22.1	22.5	19.0	86	84
SD	101.6	99.3	81.5	80	82
TN	22.3	24.7	19.3	86	78
TX	404.7	454.1	361.3	89	80
UT	43.4	44.6	38.4	88	86
VA	44.0	43.2	40.6	92	94
WA	72.5	75.1	63.2	87	84
WV	0.8	1.2	0.8	99	66
WI	114.8	128.6	114.3	100	89
WY	0.4	0.3	0.4	92	144
US	4,300.2	*4,530.7	3,871.6	90	85

* Revised.

¹ Includes total beef, veal, pork, lamb, and mutton.

² Percentages based on unrounded data.

³ N ENG includes CT, ME, MA, NH, RI, and VT.

**Commercial Cattle Slaughter: By State and United States,
November 2007 and 2008 ¹**

State	Number Slaughtered		Total Live Weight		Average Live Weight	
	2007	2008	2007	2008	2007	2008
	<i>1,000 Head</i>	<i>1,000 Head</i>	<i>1,000 Pounds</i>	<i>1,000 Pounds</i>	<i>Pounds</i>	<i>Pounds</i>
AL	0.4	0.4	325	300	843	837
AK	0.1	0.1	108	102	982	1,129
AZ	42.9	42.3	60,123	54,711	1,404	1,299
AR	0.7	0.6	710	531	1,076	967
CA	130.6	122.1	166,312	157,349	1,296	1,306
CO	186.9	171.5	250,480	229,188	1,341	1,337
DE-MD	3.3	3.3	4,348	4,299	1,312	1,289
FL						
GA	24.4		23,021		945	
HI	0.9	0.9	902	973	1,030	1,143
ID	25.5	24.5	30,873	30,773	1,227	1,273
IL						
IN	2.9	2.8	3,060	2,979	1,057	1,056
IA						
KS	599.8	448.9	786,182	586,215	1,311	1,306
KY	1.4	1.4	1,319	1,338	925	931
LA	0.6	0.7	483	473	779	723
MI	49.3	50.4	66,341	67,721	1,356	1,354
MN	68.8	66.1	92,778	90,765	1,356	1,378
MS	0.1		64		798	
MO	6.1	5.1	7,340	6,157	1,208	1,222
MT	1.9	1.7	2,183	1,933	1,155	1,140
NE	586.2	532.0	791,852	724,688	1,353	1,364
NV	0.1	0.1	79	136	1,020	1,040
N ENG ²	1.4	1.4	1,413	1,484	1,038	1,027
NJ	2.5	2.7	3,011	3,126	1,215	1,152
NM	0.4	0.5	357	552	988	1,045
NY	2.4	2.3	2,829	2,751	1,184	1,196
NC	18.0	16.6	20,634	18,963	1,152	1,150
ND	0.8	0.8	982	970	1,212	1,221
OH	8.5	10.0	9,935	11,674	1,177	1,175
OK	1.4	1.9	1,552	2,058	1,079	1,084
OR	3.1	3.4	3,545	4,020	1,174	1,220
PA	77.5	83.5	98,054	105,435	1,275	1,274
SC	13.2	12.3	14,161	13,370	1,078	1,097
SD						
TN	2.3	2.4	1,914	2,005	863	852
TX	514.7	469.0	645,260	582,050	1,258	1,245
UT	53.4	47.4	69,329	61,154	1,302	1,294
VA	1.3	0.9	1,288	943	1,026	1,012
WA	90.3	79.1	117,741	103,478	1,309	1,312
WV	1.3	1.1	1,298	1,170	1,019	1,026
WI	142.3	144.2	186,138	189,187	1,322	1,325
WY	0.6	0.5	644	600	1,164	1,160
US ³	2,830.7	2,519.0	3,677,465	3,267,744	1,304	1,302

¹ Includes slaughter under Federal inspection and other Commercial slaughter, excludes farm slaughter.

² N ENG includes CT, ME, MA, NH, RI, and VT.

³ States with no data printed are still included in the US total, data not printed to avoid disclosing individual operations. Accumulated totals and percentages based on unrounded data.

**Commercial Calf Slaughter: By State and United States,
November 2007 and 2008¹**

State	Number Slaughtered		Total Live Weight		Average Live Weight	
	2007	2008	2007	2008	2007	2008
	<i>1,000 Head</i>	<i>1,000 Head</i>	<i>1,000 Pounds</i>	<i>1,000 Pounds</i>	<i>Pounds</i>	<i>Pounds</i>
AL						
AK						
AZ						
AR						
CA	9.7	16.5	1,240	1,861	129	114
CO						
DE-MD	0.2	0.2	48	54	248	281
FL						
GA	0.1	0.1	26	44	444	449
HI						
ID						
IL	2.3	5.9	966	1,422	418	247
IN						
IA						
KS						
KY						
LA	0.4	0.5	186	265	500	524
MI	1.5	1.1	615	451	412	422
MN						
MS						
MO		0.1		26		455
MT						
NE						
NV						
N ENG ²	0.2	0.2	65	53	268	234
NJ	4.6	4.6	1,860	1,874	409	410
NM		2.6		234		91
NY	14.7	19.6	1,528	1,873	108	98
NC	0.2	0.1	77	69	490	517
ND						
OH	0.1	4.3	22	1,980	347	460
OK						
OR						
PA	12.4	12.8	5,103	4,291	411	337
SC						
SD						
TN	0.1	0.1	29	27	409	479
TX	1.5	3.4	816	943	569	279
UT						
VA	0.1		31		323	
WA						
WV						
WI						
WY						
US ³	58.9	81.4	16,919	19,313	291	240

¹ Includes slaughter under Federal inspection and other Commercial slaughter, excludes farm slaughter.

² N ENG includes CT, ME, MA, NH, RI, and VT.

³ States with no data printed are still included in the US total, data not printed to avoid disclosing individual operations. Accumulated totals and percentages based on unrounded data.

**Commercial Hog Slaughter: By State and United States,
November 2007 and 2008 ¹**

State	Number Slaughtered		Total Live Weight		Average Live Weight	
	2007	2008	2007	2008	2007	2008
	<i>1,000 Head</i>	<i>1,000 Head</i>	<i>1,000 Pounds</i>	<i>1,000 Pounds</i>	<i>Pounds</i>	<i>Pounds</i>
AL	7.7	5.9	3,465	2,611	450	442
AK						
AZ	0.2	0.1	44	18	212	275
AR	17.4	11.8	7,965	5,422	458	460
CA	234.9	207.5	57,836	50,608	246	244
CO	0.8	0.8	200	215	261	260
DE-MD	1.7	1.6	458	429	274	273
FL	8.3	5.7	1,137	856	138	150
GA	12.0	6.0	2,721	1,583	227	264
HI	1.7	1.4	401	300	232	218
ID	13.0	12.4	3,382	3,193	261	258
IL	961.8	877.0	270,615	242,694	282	277
IN	720.6	678.3	191,935	181,003	267	267
IA	2,840.1	2,588.9	772,812	697,542	272	270
KS	15.3		6,842		448	
KY	250.0		67,398		270	
LA	1.7	1.4	305	244	183	173
MI	10.9	9.4	4,359	3,589	400	383
MN	849.4	816.1	224,404	215,632	265	265
MS		5.6		1,573		279
MO	640.4	637.5	179,467	175,685	280	276
MT	1.3	1.2	348	298	268	252
NE	671.0	642.5	181,817	174,132	271	271
NV						
N ENG ²	1.8	1.7	418	417	228	247
NJ	9.7	7.8	892	748	92	96
NM	0.1	0.1	31	36	258	272
NY	2.4	2.0	447	346	186	176
NC	1,043.8	1,002.9	274,537	263,960	263	263
ND	9.1	8.8	2,325	2,244	255	254
OH	90.1	78.5	25,502	21,735	284	278
OK	427.3	436.6	117,614	120,476	275	276
OR	15.1	12.3	3,881	3,151	258	257
PA	256.4	236.7	66,111	61,909	258	262
SC						
SD	474.5	371.5	122,625	96,635	259	260
TN	66.5	57.7	31,376	26,786	473	466
TX	40.5	36.4	11,173	8,833	276	243
UT	5.0	4.8	870	913	173	191
VA	215.5	197.4	57,420	53,083	267	269
WA	2.5	1.9	487	429	192	221
WV	0.9	0.7	204	183	223	268
WI	43.5	39.2	19,408	17,373	453	451
WY	0.3	0.2	73	65	261	263
US ³	10,049.2	9,325.0	2,734,844	2,524,617	272	271

¹ Includes slaughter under Federal inspection and other Commercial slaughter, excludes farm slaughter.

² N ENG includes CT, ME, MA, NH, RI, and VT.

³ States with no data printed are still included in the US total, data not printed to avoid disclosing individual operations. Accumulated totals and percentages based on unrounded data.

**Commercial Sheep and Lamb Slaughter: By State and United States,
November 2007 and 2008¹**

State	Number Slaughtered		Total Live Weight		Average Live Weight	
	2007	2008	2007	2008	2007	2008
	<i>1,000 Head</i>	<i>1,000 Head</i>	<i>1,000 Pounds</i>	<i>1,000 Pounds</i>	<i>Pounds</i>	<i>Pounds</i>
AL						
AK						
AZ		0.1		8		92
AR						
CA						
CO	95.9	75.0	14,559	11,503	152	154
DE-MD	2.7	3.0	272	294	100	97
FL	0.1	0.3	11	16	78	58
GA	0.6	0.3	56	24	101	92
HI						
ID	0.3	0.4	41	50	123	119
IL						
IN	1.9	2.0	205	232	111	114
IA	36.0	27.2	5,152	3,829	143	141
KS	0.2	0.3	21	35	108	116
KY	1.0	1.0	120	120	125	124
LA	0.2	0.3	12	18	76	68
MI	16.1	13.6	2,108	1,724	132	127
MN	0.3	1.2	42	149	132	124
MS						
MO	0.4	0.5	43	50	116	110
MT	0.4	0.4	33	39	85	99
NE		0.1		7		127
NV	0.1		6		118	
N ENG ²	2.5	3.0	229	251	90	84
NJ	9.4	9.9	790	830	84	84
NM	1.1	1.0	161	136	144	132
NY	3.3	2.8	254	235	78	85
NC	0.7	0.7	56	51	79	78
ND	0.1	0.1	12	10	122	119
OH	1.3	1.5	145	163	108	105
OK	0.1	0.1	11	12	87	93
OR	1.9	1.7	252	228	132	134
PA	4.3	3.9	423	391	97	99
SC						
SD	1.0	0.2	118	24	121	121
TN	0.9	1.2	68	91	78	79
TX	3.9	4.0	396	399	101	101
UT	3.0	2.5	400	335	133	132
VA	1.3	1.3	128	121	98	96
WA	0.7	0.5	102	64	137	130
WV		0.5		66		141
WI	1.2	0.9	145	110	125	121
WY	0.1	0.1	15	11	149	139
US ³	236.7	193.7	32,168	25,802	136	133

¹ Includes slaughter under Federal inspection and other Commercial slaughter, excludes farm slaughter.

² N ENG includes CT, ME, MA, NH, RI, and VT.

³ States with no data printed are still included in the US total, data not printed to avoid disclosing individual operations. Accumulated totals and percentages based on unrounded data.

**Classification of Livestock Slaughtered Under Federal Inspection:
United States**

Item	Nov 2007	Oct 2008	Nov 2008	Jan - Nov ¹		Nov 2007	Oct 2008	Nov 2008	Jan - Nov ¹	
	<i>1,000 Head</i>	<i>1,000 Head</i>	<i>1,000 Head</i>	<i>1,000 Head</i>	<i>1,000 Head</i>	<i>Percent of Total</i>	<i>Percent of Total</i>	<i>Percent of Total</i>	<i>Percent of Total</i>	<i>Percent of Total</i>
Class ²										
Cattle										
Steers	1,340	1,397	1,137	16,006	15,677	48.1	47.6	45.9	51.4	50.3
Heifers	873	898	778	9,408	9,294	31.3	30.6	31.4	30.2	29.8
All Cows	527	583	514	5,192	5,644	18.9	19.9	20.8	16.7	18.1
Dairy Cows	217	236	208	2,292	2,362	7.8	8.1	8.4	7.4	7.6
Other Cows	310	347	306	2,900	3,281	11.1	11.8	12.4	9.3	10.5
Bulls	47	55	46	513	567	1.7	1.9	1.9	1.6	1.8
Total ¹	2,787	2,933	2,475	31,118	31,182	100.0	100.0	100.0	100.0	100.0
Calves & Vealers	58	94	80	685	849	100.0	100.0	100.0	100.0	100.0
Hogs										
Barrow & Gilts	9,634	*10,304	8,970	95,051	101,711	96.7	96.7	97.0	96.5	96.5
Sows	290	310	247	3,045	3,230	2.9	2.9	2.7	3.1	3.1
Boars	41	40	32	442	426	0.4	0.4	0.3	0.4	0.4
Total ¹	9,964	*10,654	9,249	98,538	105,367	100.0	100.0	100.0	100.0	100.0
Sheep										
Mature Sheep	10	10	9	105	111	4.3	4.8	4.8	4.5	5.1
Lambs & Yrlngs	213	199	171	2,212	2,070	95.7	95.2	95.2	95.5	94.9
Total ¹	223	209	180	2,316	2,181	100.0	100.0	100.0	100.0	100.0
Average Dressed Weight										
	<i>Pounds</i>	<i>Pounds</i>	<i>Pounds</i>	<i>Pounds</i>	<i>Pounds</i>					
Cattle	793	*789	784	775	777					
Steers ³	858	860	856	829	836					
Heifers ³	801	795	794	763	770					
All Cows ³	603	597	598	617	610					
Bulls ³	865	866	872	895	889					
Calves & Vealers	171	142	139	183	151					
Hogs	204	201	203	201	201					
Barrow Gilts ⁴	201	198	200	198	197					
Sows ⁴	307	308	308	308	308					
Boars ⁴	214	211	205	213	209					
Sheep	69	68	68	69	69					
Mature Sheep ⁵	66	66	65	67	67					
Lamb & Yrlngs ⁵	69	68	68	69	70					

* Revised.

¹ Total and percentages based on unrounded data.

² Species totals and classification reported by food inspectors, Inspection Operations, FSIS.

³ Included in cattle average dressed weight.

⁴ Included in hog average dressed weight.

⁵ Included in sheep average dressed weight.

**Federally Inspected Slaughter: By Region and United States,
November 2008¹**

Standard Federal Regions	Cattle							Calves
	Total ²	Steers	Heifers	Cows			Bulls	Total
				All	Dairy	Other		
	<i>1,000 Head</i>	<i>1,000 Head</i>	<i>1,000 Head</i>	<i>1,000 Head</i>	<i>1,000 Head</i>	<i>1,000 Head</i>	<i>1,000 Head</i>	<i>1,000 Head</i>
1	1.2	0.5	0.3					0.2
2	4.8	1.9	0.3	2.2	1.7	0.5	0.4	24.1
3	85.6	33.9	7.2	42.9	34.1	8.8	1.7	13.0
4	66.8	1.1	0.5	55.6	10.0	45.6	9.6	0.3
5	329.5	126.8	46.6	146.5	76.4	70.1	9.7	19.1
6	466.8	222.6	152.4	82.6	11.5	71.1	9.1	5.6
7	1,018.5	524.1	429.9	57.1	1.2	55.9	7.4	0.1
8	231.5	108.3	104.5					
9	164.7	74.6	8.4	79.0	56.9	22.1	2.7	16.2
10	105.6	42.8	27.8	31.0	11.7	19.3	3.9	
US ²	2,475.0	1,136.6	777.9	514.1	208.2	305.9	46.4	79.7
	Hogs				Sheep			
	Total ²	Barrows & Gilts	Sows	Boars	Total ²	Mature Sheep	Lambs & Yearlings	
	<i>1,000 Head</i>	<i>1,000 Head</i>	<i>1,000 Head</i>	<i>1,000 Head</i>	<i>1,000 Head</i>	<i>1,000 Head</i>	<i>1,000 Head</i>	
1	1.3	1.3			2.8	0.1	2.6	
2	9.5	9.3	0.1	0.1	11.8	1.0	10.8	
3	434.3	422.7	1.8	9.7	8.5	0.6	8.0	
4	1,365.8	1,290.3	74.2	1.3	3.4	0.9	2.4	
5	2,469.3	2,369.6	96.3	3.4	24.7	2.7	21.9	
6	477.8	456.1	20.2	1.5				
7	3,880.3	3,810.0	54.3	15.9	27.5	0.4	27.1	
8	383.1	382.8	0.3		77.1	1.3	75.7	
9	202.4	202.3						
10	25.7	25.6	0.1		1.9	0.1	1.8	
US ²	9,249.5	8,969.9	247.4	32.1	179.9	8.7	171.3	

¹ States included in regions are as follows: 1- CT, ME, NH, VT, MA, & RI; 2- NY & NJ; 3- DE-MD, PA, WV, & VA; 4- AL, FL, GA, KY, MS, NC, SC, & TN; 5- IL, IN, MI, MN, OH, & WI; 6- AR, LA, NM, OK, & TX; 7- IA, KS, MO, & NE; 8- CO, MT, ND, SD, UT, & WY; 9- AZ, CA, HI & NV; 10- AK, ID, OR, & WA.

² Regions with no data printed are still included in the US and Region total, data not printed to avoid disclosing individual operations. Totals may not add due to rounding.

**Federally Inspected Slaughter: By Region and United States,
January - November 2008¹**

Standard Federal Regions	Cattle							Calves
	Total ²	Steers	Heifers	Cows			Bulls	Total
				All	Dairy	Other		
	<i>1,000 Head</i>	<i>1,000 Head</i>	<i>1,000 Head</i>	<i>1,000 Head</i>	<i>1,000 Head</i>	<i>1,000 Head</i>	<i>1,000 Head</i>	<i>1,000 Head</i>
1	10.7	4.8	2.0					2.2
2	53.0	18.6	3.2	27.1	22.3	4.8	4.1	260.5
3	948.7	383.8	84.1	457.3	363.1	94.2	23.5	149.2
4	799.8	14.1	5.0	671.1	124.0	547.0	109.7	3.8
5	3,773.3	1,641.3	478.8	1,544.4	788.5	756.0	108.7	211.3
6	6,213.2	3,248.3	1,918.9	921.6	158.2	763.4	124.3	32.8
7	13,141.4	7,321.7	5,046.8	683.0	16.5	666.5	89.9	0.7
8	3,059.9	1,585.4	1,263.2					
9	1,927.9	960.6	127.5	807.1	675.3	131.8	32.8	177.2
10	1,254.3	498.8	364.9	342.8	149.3	193.5	47.8	
US ²	31,182.2	15,677.4	9,294.5	5,643.8	2,362.5	3,281.4	566.5	849.2
	Hogs				Sheep			
	Total ²	Barrows & Gilts	Sows	Boars	Total ²	Mature Sheep	Lambs & Yearlings	
	<i>1,000 Head</i>	<i>1,000 Head</i>	<i>1,000 Head</i>	<i>1,000 Head</i>	<i>1,000 Head</i>	<i>1,000 Head</i>	<i>1,000 Head</i>	
1	13.8	13.3			23.6	1.4	22.1	
2	119.8	116.8	1.7	1.3	150.6	14.7	135.9	
3	4,988.0	4,827.5	26.5	134.0	99.6	6.0	93.6	
4	15,247.2	14,416.4	812.7	18.1	37.7	11.3	26.3	
5	27,917.1	26,509.9	1,368.5	38.7	325.3	34.6	290.6	
6	5,301.5	5,023.7	268.0	9.8				
7	44,568.1	43,601.5	743.3	223.3	326.2	4.8	321.5	
8	4,496.3	4,489.1	7.1	0.1	898.8	17.2	881.6	
9	2,397.2	2,396.0						
10	317.9	316.6	1.1	0.1	25.4	1.6	23.9	
US ²	105,366.8	101,710.9	3,230.2	425.7	2,180.9	111.2	2,069.7	

¹ States included in regions are as follows: 1- CT, ME, NH, VT, MA, & RI; 2- NY & NJ; 3- DE-MD, PA, WV, & VA; 4- AL, FL, GA, KY, MS, NC, SC, & TN; 5- IL, IN, MI, MN, OH, & WI; 6- AR, LA, NM, OK, & TX; 7- IA, KS, MO, & NE; 8- CO, MT, ND, SD, UT, & WY; 9- AZ, CA, HI & NV; 10- AK, ID, OR, & WA.

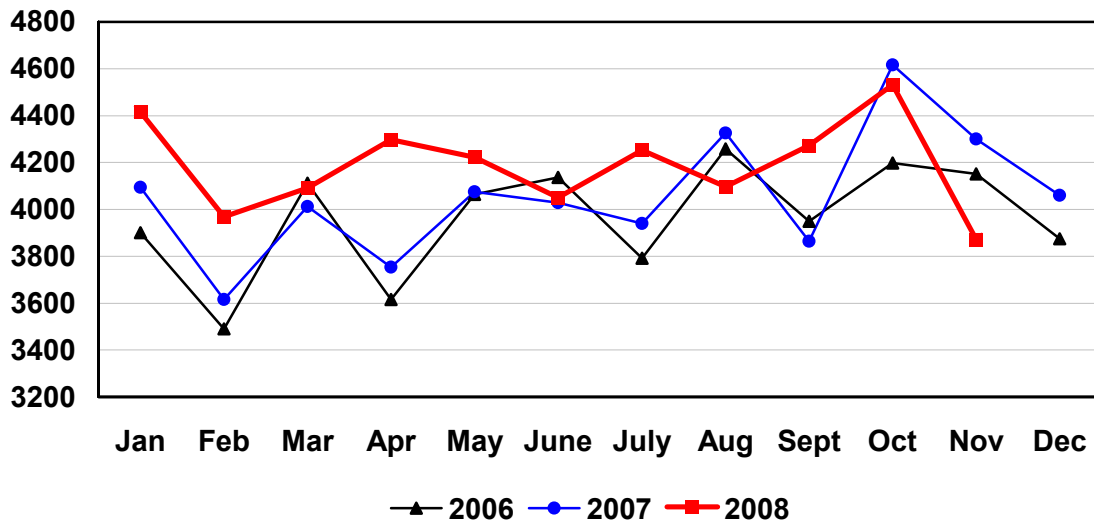
² Regions with no data printed are still included in the US and Region total, data not printed to avoid disclosing individual operations. Totals may not add due to rounding.

Federally Inspected Slaughter: Percent of Total Commercial Slaughter by Species, United States

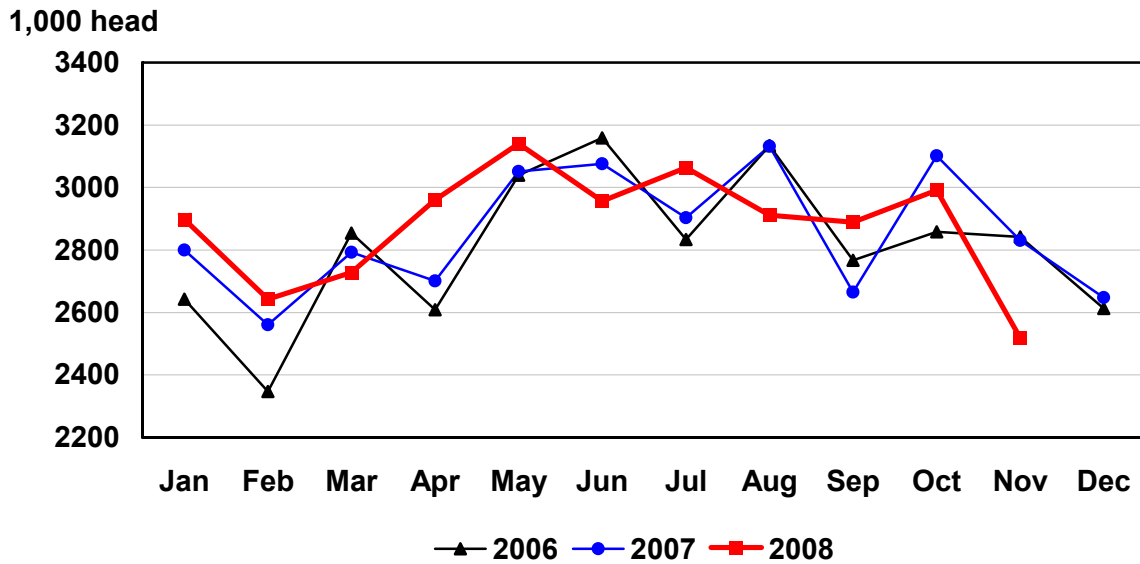
Species	Nov 2007	Oct 2008	Nov 2008	Jan - Nov	
				2007	2008
	<i>Percent</i>	<i>Percent</i>	<i>Percent</i>	<i>Percent</i>	<i>Percent</i>
Cattle	98.5	98.1	98.3	98.4	98.4
Calves	97.6	98.1	97.9	98.3	98.4
Hogs	99.2	99.1	99.2	99.1	99.1
Sheep	94.0	93.1	92.9	94.0	93.8

U.S. Monthly Commercial Red Meat Production

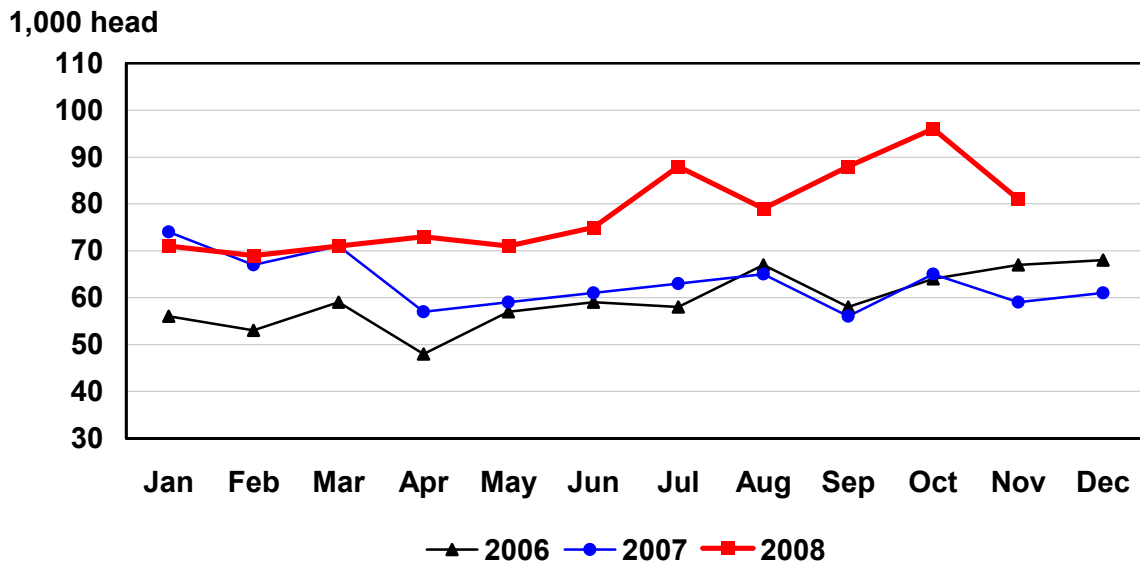
Million Pounds



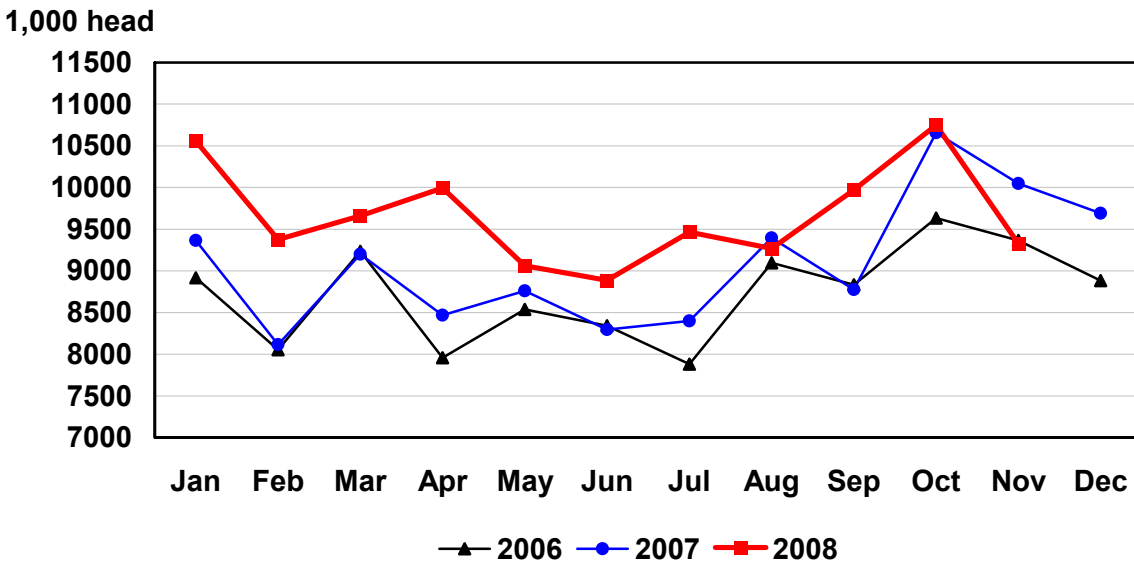
U.S. Monthly Commercial Slaughter Cattle



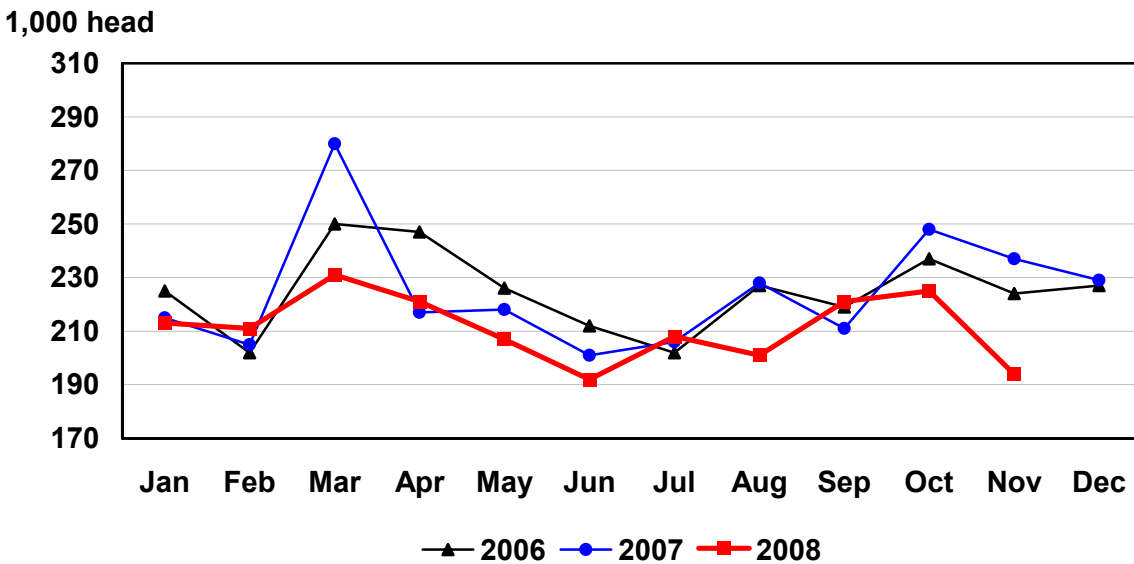
U.S. Monthly Commercial Slaughter Calves



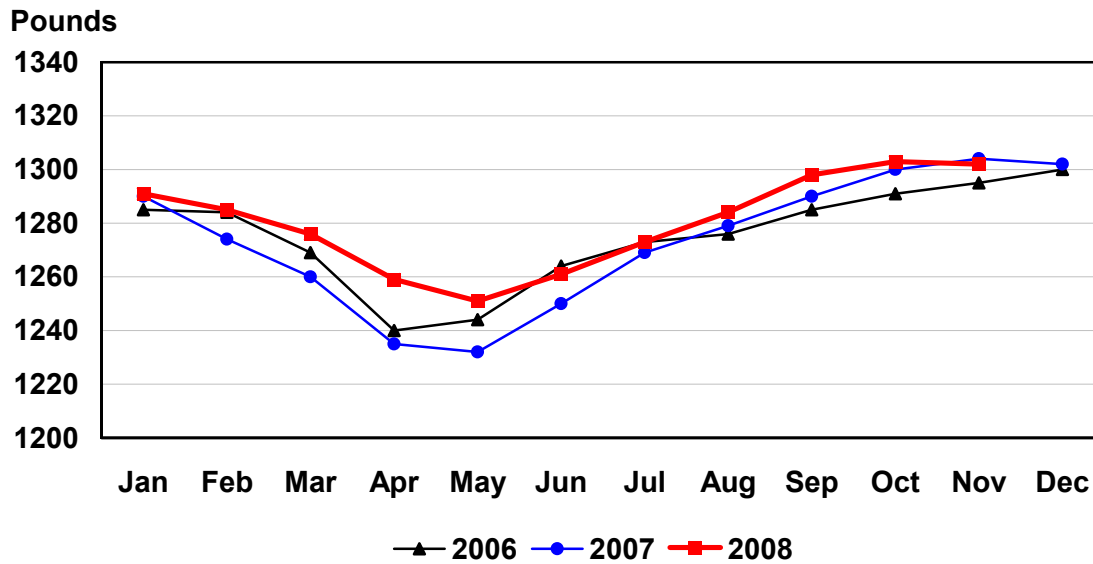
U.S. Monthly Commercial Slaughter Hogs



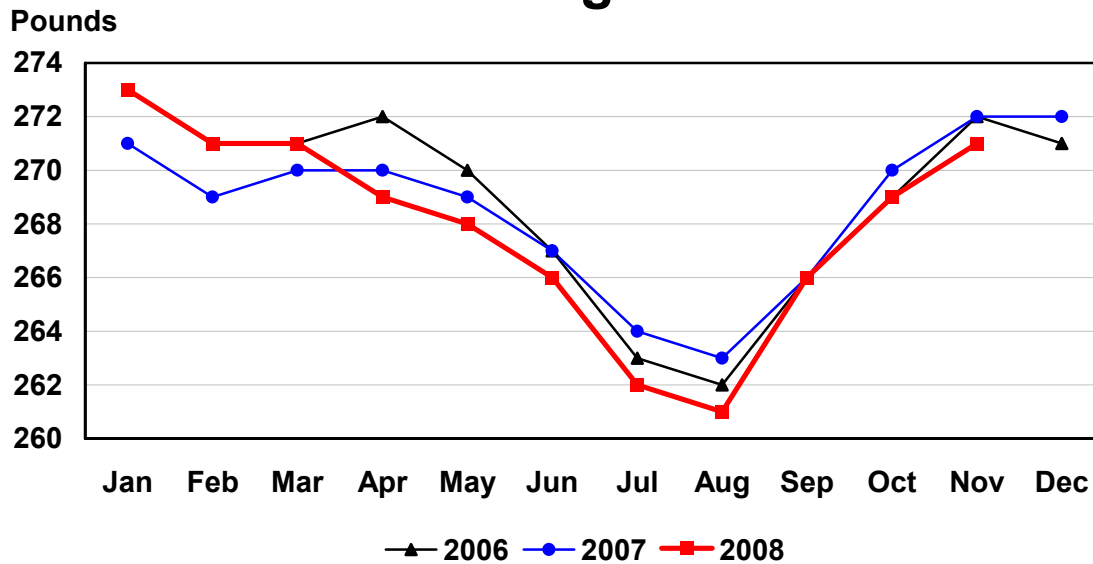
U.S. Monthly Commercial Slaughter Sheep



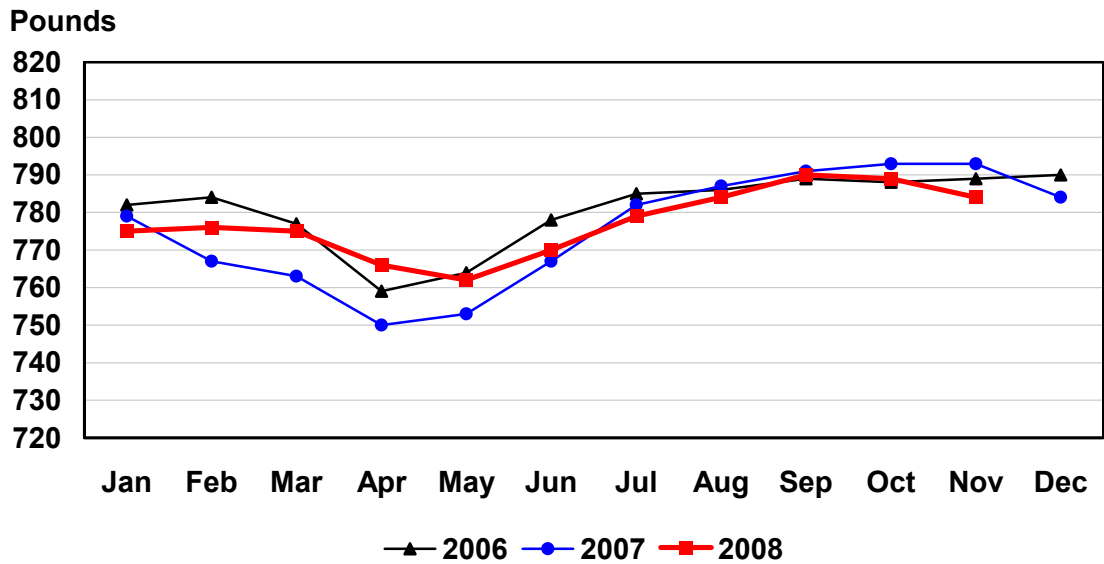
U.S. Monthly Commercial Slaughter Average Live Weight Cattle



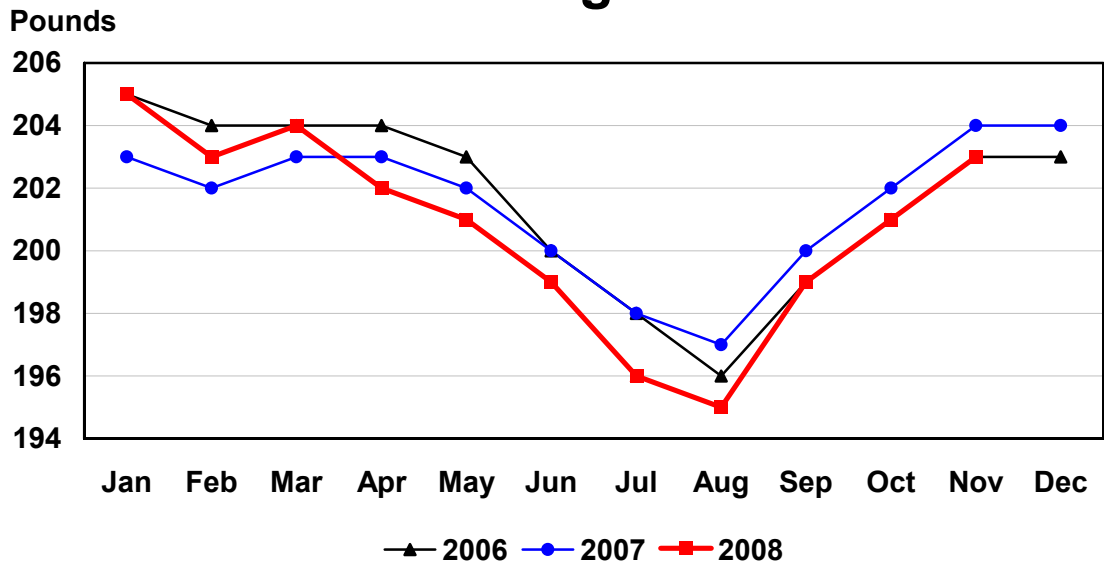
U.S. Monthly Commercial Slaughter Average Live Weight Hogs



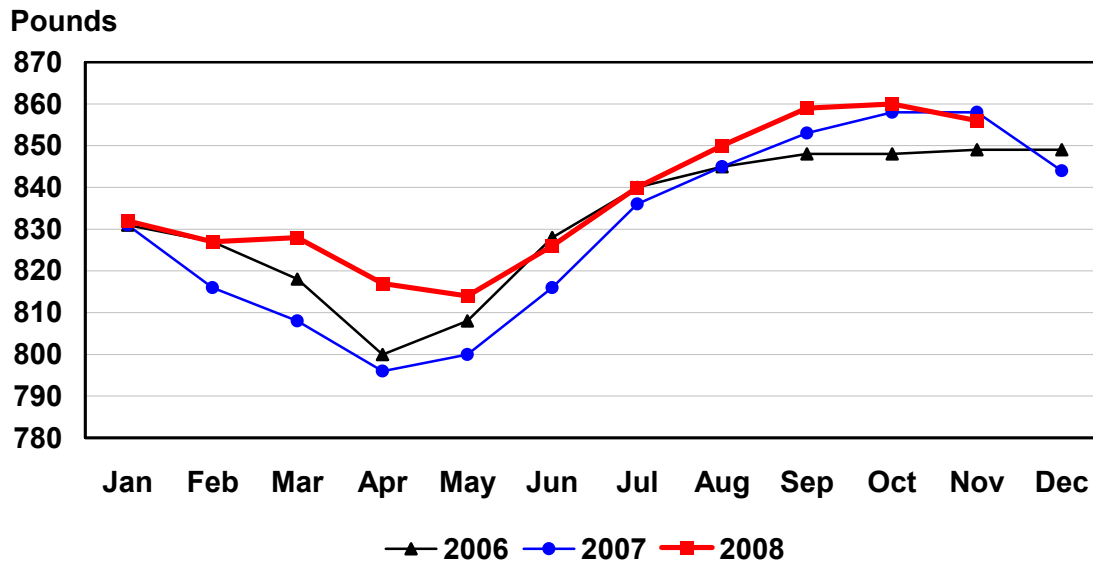
U.S. Monthly Federally Inspected Average Dressed Weight Cattle



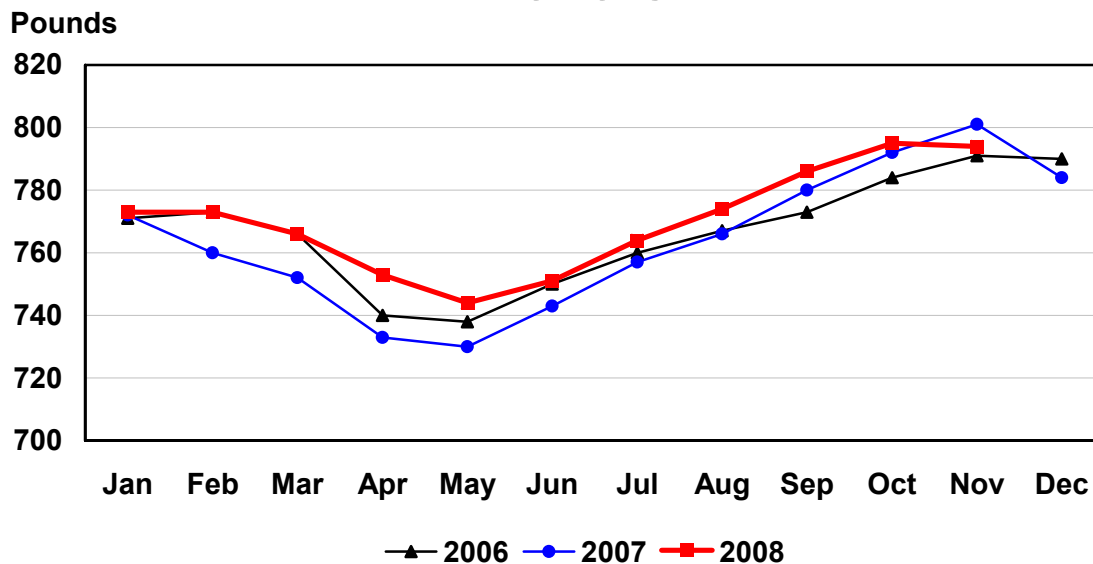
U.S. Monthly Federally Inspected Average Dressed Weight Hogs



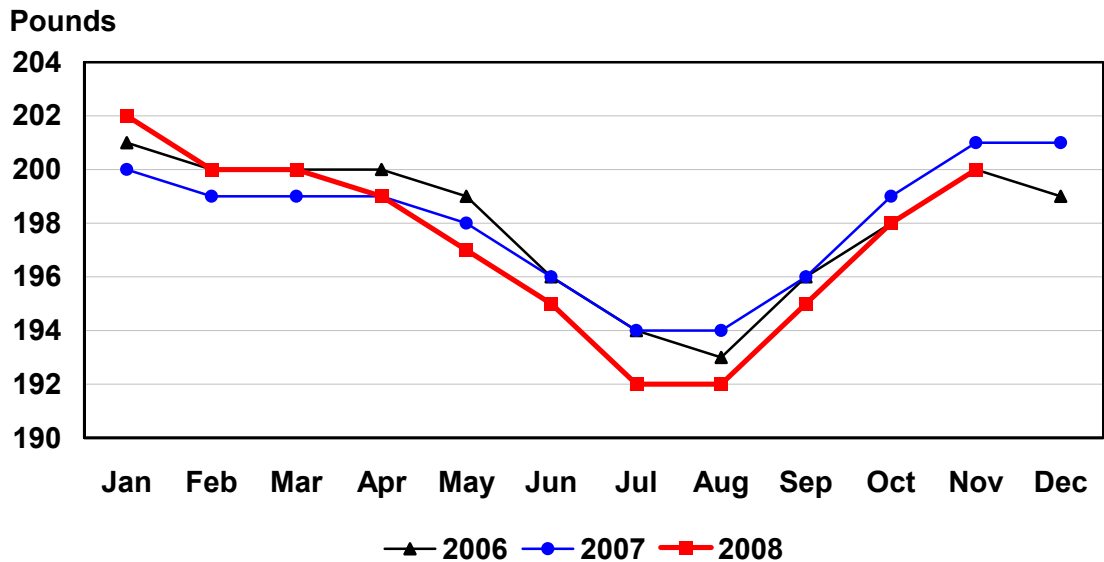
U.S. Monthly Federally Inspected Average Dressed Weight Steers



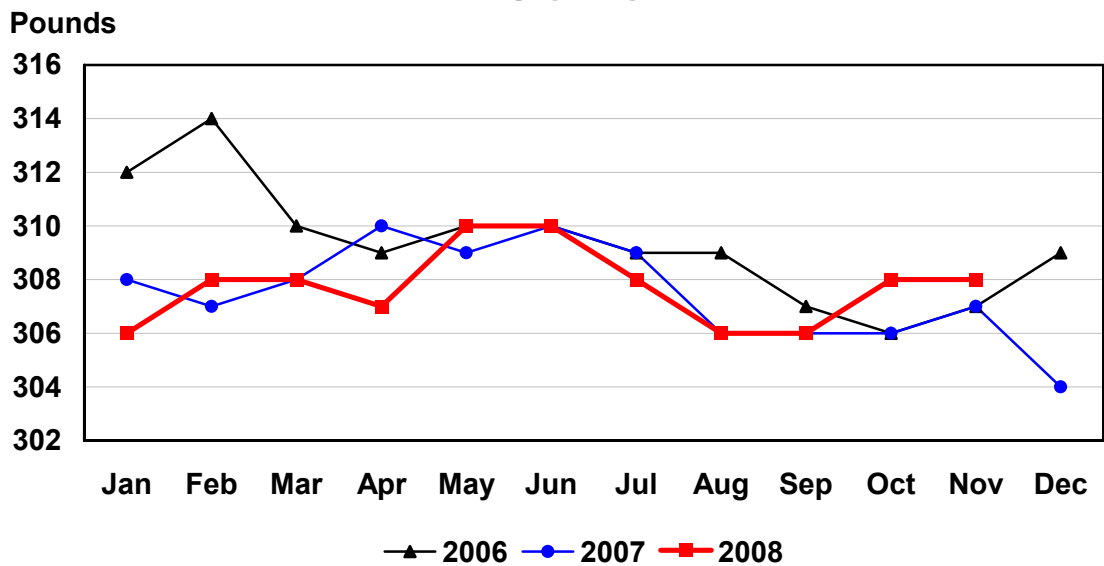
U.S. Monthly Federally Inspected Average Dressed Weight Heifers



U.S. Monthly Federally Inspected Average Dressed Weight Barrows and Gilts



U.S. Monthly Federally Inspected Average Dressed Weight Sows



Reliability of Livestock Slaughter Estimates

Data Sources: Primary data for the commercial livestock slaughter estimates are obtained from electronic reports completed by inspectors from the Food Safety and Inspection Service (FSIS), USDA, which provide daily counts of animals slaughtered in Federally Inspected (FI) plants, in addition to total live and dressed weights. These counts are combined with data from State-administered Non-Federally Inspected (NFI) slaughter plants to derive total commercial slaughter estimates. More than 95 percent of the total U.S. slaughter for any species is under Federal Inspection.

There are nearly 800 livestock slaughter plants in the U.S. operating under Federal Inspection and over 2,000 Non-Federally Inspected (State-inspected or custom-exempt) slaughter plants. Slaughter from State-inspected Talmedge-Aiken plants is included in FI totals (see Types of Plants, page 20). To prevent duplication in reporting between FI and NFI plants and assure all FI plants are included, certificates prepared by FSIS identifying operating status are constantly monitored

Revision Policy: Number of head slaughtered, live weights, and dressed weights are subject to revision the following month after the monthly release. Annual totals are published in the slaughter summary each March which includes any revisions made to current and previous year's published data. Revisions are generally the result of late reports received from slaughter plants and are usually less than one-half of one percent. No revisions will be made to the previous year's data after the publication of the annual summary in March.

Procedures and Reliability: The livestock slaughter data is obtained electronically on a daily basis and summarized approximately two weeks after the week of slaughter. An edit compares each plant's data with the historical data for that plant. Data are checked for unusual values for head kill, patterns of kill, average weights, and dressing percent, based on each plant's past operating profile. In addition, the edit provides a listing of missing reports for follow-up contact with FSIS. Average live and dressed weights and dressing percentages by State are compared with the previous weeks as an additional check. Fluctuations are frequently the result of plants permanently or temporarily closing and a shift in the species reported.

The FSIS District Veterinary Medical Specialists (DVMS) are contacted by e-mail or telephone for missing or potentially erroneous slaughter data. This assures that plants slaughtering a large number of head or several species are accounted for each week. Any corrections FSIS makes to the slaughter data are included in the summary.

Imputation may be necessary for incomplete reports. The imputation of live and dressed weights is based on the current week reported data of plants of similar size and location. Imputation for live and dressed weight data for cattle and hogs is less than 10 percent and 7 percent, respectively. The imputation for calves and sheep is more frequent and variable. If no data is received electronically or by other means, for plants slaughtering fewer than 50 total head weekly of only one species, data are imputed. The imputation of head for any plant is based on the historical data for that particular plant. The imputation of head slaughtered is rare but when necessary, the imputed head kill for missing plants usually is less than 1 percent of the U.S. head kill totals.

FI data are summarized weekly and accumulated to a monthly total for this release. These weekly totals are published by USDA's Agricultural Marketing Service (AMS) in **Livestock, Meat, Wool Market News**, Weekly Summary, and Statistics and are also available on the NASS website. NFI data are summarized monthly only.

Livestock slaughter estimates are based on a census of operating plants and therefore, have no sampling error. However, they may be subject to errors such as omissions, duplications and mistakes in reporting, recording and processing the data. These errors are minimized through rigid quality controls in the edit and summarization process, and a careful review of all reported data for consistency and reasonableness.

No data are published when an individual plant's data could be divulged. If not published, these data are still included in US and region totals. A review of the data is made annually to determine the publishable data.

Types of Livestock Slaughter Plants

There are generally **four types** of slaughtering plants.

- (1) **Federally Inspected (FI) Plants:** Plants that transport meat interstate must employ federal inspectors to assure compliance with USDA standards. Any State whose commercial plants operate entirely under federal inspection may still have custom-exempt establishments for which NFI estimates are made.
- (2) **Talmedge-Aiken (TA) Plants:** Slaughter plants in which USDA is responsible for inspection. However, federal inspection is carried out by State employees. These plants are considered to be federally inspected.
- (3) **Non-Federally Inspected (NFI) Plants:** Plants which sell and transport only intrastate. State inspectors assure compliance with individual State standards for these NFI plants. Mobile slaughtering units are excluded and are considered farm slaughter.
- (4) **Custom-Exempt Plants:** Plants that do not sell meat but operate on a custom basis only are custom-exempt. The animals and meat are not inspected, but the facilities must meet health standards. These are considered NFI plants and head kill is included in NFI totals.

Terms and Definitions Used for Livestock Slaughter Estimates

Average Live Weight: Excludes post-mortem condemnations

Commercial Production: Includes slaughter and meat production in federally inspected and other plants, but excludes animals slaughtered on farms.

Dressed Weight: The weight of a chilled animal carcass. Beef with kidney knob in; veal with hide off; lamb and mutton with pluck out; pork with leaf fat and kidneys out, jowls on and head off.

Dressing Percent: Usually expressed as a percentage yield of chilled carcass in relation to the weight of the live animal on hoof. For example, a live hog that weighed 200 pounds on hoof and yielded a carcass weighing 140 pounds would have a dressing percentage of 70.

Food and Meat Inspection: Includes examination, checking, or testing of a carcass and/or meat against established government standards and involves checking the facility for cleanliness, health of animals, or parts of animals and quality of the meat produced.

Number of Head: Includes post-mortem condemnations.

Plant, Slaughter: An establishment where animals are killed and butchered.

Red Meat: Red meat production is the carcass weight after slaughter excluding condemnation and is comprised of beef, veal, pork, and lamb and mutton. The FI red meat production is equal to the total carcass weight after slaughter. The NFI meat production formula is (NFI head kill) X (live weight) X (FI dressing percentage) = NFI red meat production.

Slaughter: Killing and butchering of animals primarily for food.

Slaughter, Farm: Animals slaughtered on farms primarily for home consumption. Excludes custom slaughter for farmers at commercial establishments, but includes mobile slaughtering on farms. These estimates appear only in the annual slaughter release.

Total Live Weight: Excludes post-mortem condemnations.

Wholesome Meat Act: Legislation that specifies that all meat produced for sale in the U.S. must be inspected. Meat that is transported interstate must be inspected in compliance with Federal (USDA) Standards.

Information Contacts

Listed below are the commodity specialists in the Livestock Branch of the National Agricultural Statistics Service to contact for additional information.

Dan Kerestes, Chief, Livestock Branch.....	(202) 720-3570
Scott Hollis, Head, Livestock Section.....	(202) 690-2424
Jim Collom – Dairy Products.....	(202) 690-3236
Joe Gaynor – Dairy Products Prices.....	(202) 690-2168
Jason Hardegree – Cattle, Cattle on Feed.....	(202) 720-3040
Benita Hodge – Livestock Slaughter.....	(515) 284-4340
Mike Miller – Milk Production and Milk Cows.....	(202) 720-3278
Everett Olbert – Sheep and Goats.....	(202) 720-4751
Nicholas Streff – Hogs and Pigs.....	(202) 720-3106

ACCESS TO REPORTS!!

For your convenience, there are several ways to obtain NASS reports, data products, and services:

INTERNET ACCESS

All NASS reports are available free of charge on the worldwide Internet. For access, connect to the Internet and go to the NASS Home Page at: www.nass.usda.gov.

E-MAIL SUBSCRIPTION

All NASS reports are available by subscription free of charge direct to your e-mail address. Starting with the NASS Home Page at www.nass.usda.gov, under the right navigation, *Receive reports by Email*, click on **National** or **State**. Follow the instructions on the screen.

PRINTED REPORTS OR DATA PRODUCTS

CALL OUR TOLL-FREE ORDER DESK: 800-999-6779 (U.S. and Canada)
Other areas, please call 703-605-6220 FAX: 703-605-6900
(Visa, MasterCard, check, or money order acceptable for payment.)

ASSISTANCE

For **assistance** with general agricultural statistics or further information about NASS or its products or services, contact the **Agricultural Statistics Hotline** at **800-727-9540**, 7:30 a.m. to 4:00 p.m. ET, or e-mail: nass@nass.usda.gov.

The U.S. Department of Agriculture (USDA) prohibits discrimination in all its programs and activities on the basis of race, color, national origin, age, disability, and where applicable, sex, marital status, familial status, parental status, religion, sexual orientation, genetic information, political beliefs, reprisal, or because all or part of an individual's income is derived from any public assistance program. (Not all prohibited bases apply to all programs.) Persons with disabilities who require alternative means for communication of program information (Braille, large print, audiotope, etc.) should contact USDA's TARGET Center at (202) 720-2600 (voice and TDD).

To file a complaint of discrimination, write to USDA, Director, Office of Civil Rights, 1400 Independence Avenue, S.W., Washington, D.C. 20250-9410, or call (800) 795-3272 (voice) or (202) 720-6382 (TDD). USDA is an equal opportunity provider and employer.