

# Livestock Slaughter

---

Released February 20, 2009, by the National Agricultural Statistics Service (NASS), Agricultural Statistics Board, U.S. Department of Agriculture. For information on *Livestock Slaughter* call Sherry Bertramsen at (515) 284-4340, office hours 7:00 a.m. to 4:00 p.m. CT.

## Record Low for January Lamb and Mutton Production

**Commercial red meat production** for the United States totaled 4.17 billion pounds in January, down 6 percent from the 4.42 billion pounds produced in January 2008.

**Beef production**, at 2.12 billion pounds, was 5 percent below the previous year. Cattle slaughter totaled 2.72 million head, down 6 percent from January 2008. The average live weight was up 15 pounds from the previous year, at 1,306 pounds.

**Veal production** totaled 12.0 million pounds, 6 percent above January a year ago. Calf slaughter totaled 84,700 head, 19 percent above January 2008. The average live weight was down 24 pounds from last year, at 245 pounds.

**Pork production** totaled 2.03 billion pounds, 6 percent below the previous year. Hog kill totaled 9.92 million head, 6 percent below January 2008. The average live weight was down 1 pound from the previous year, at 272 pounds.

**Lamb and mutton production**, at 13.3 million pounds, was 10 percent below January 2008. Sheep slaughter totaled 189,400 head, 11 percent below last year. The average live weight was 141 pounds, up 2 pounds from January a year ago.

**January 2008** contained 23 weekdays (including two holidays) and 4 Saturdays.

**January 2009** contained 22 weekdays (including two holidays) and 5 Saturdays.



## Contents

	<b>Page</b>
Red Meat Production, Commercial and FI, by Class, U.S. ....	1
Livestock Slaughter, Number and Average Weights, by Species and Type of Slaughter, U.S. ....	2
Commercial Red Meat Production, by State and U.S. ....	3
Commercial Cattle Slaughter, Number, Total and Average Live Weight, by State and U.S. ....	4
Commercial Calf Slaughter, Number, Total and Average Live Weight, by State and U.S. ....	5
Commercial Hog Slaughter, Number, Total and Average Live Weight, by State and U.S. ....	6
Commercial Sheep and Lamb Slaughter, Number, Total and Average Live Weight, by State and U.S. ....	7
Federally Inspected Classification of Number and Average Dressed Weight, by Species and Class and U.S. ....	8
Federally Inspected Slaughter by Species and Class, by Region and U.S. ....	9
Federally Inspected Percent of Total Commercial, by Species, U.S. ....	10
Reliability Statement.....	17
Types of Plants.....	18
Terms and Definitions .....	19
Information Contacts .....	19



**Commercial Red Meat Production: United States <sup>1</sup>**

Type	Jan 2008	Dec 2008	Jan 2009	Jan 09 % of		Jan <sup>2</sup>		
				Jan 2008	Dec 2008	2008	2009	09 as % of 08
	<i>Million Pounds</i>	<i>Million Pounds</i>	<i>Million Pounds</i>	<i>Percent</i>	<i>Percent</i>	<i>Million Pounds</i>	<i>Million Pounds</i>	<i>Percent</i>
Beef	2,232.0	2,082.0	2,118.4	95	102	2,232.0	2,118.4	95
Veal	11.3	13.3	12.0	106	90	11.3	12.0	106
Pork	2,157.8	2,052.0	2,026.0	94	99	2,157.8	2,026.0	94
Lamb & Mutton	14.8	15.4	13.3	90	86	14.8	13.3	90
Total Red Meat <sup>3</sup>	4,415.9	4,162.7	4,169.6	94	100	4,415.9	4,169.6	94

<sup>1</sup> Based on packers' dressed weights and excludes farm slaughter.

<sup>2</sup> Accumulated totals and percentages based on unrounded data.

<sup>3</sup> Totals may not equal sum of the parts due to rounding.

**Federally Inspected Red Meat Production: United States <sup>1</sup>**

Type	Jan 2008	Dec 2008	Jan 2009	Jan 09 % of		Jan <sup>2</sup>		
				Jan 2008	Dec 2008	2008	2009	09 as % of 08
	<i>Million Pounds</i>	<i>Million Pounds</i>	<i>Million Pounds</i>	<i>Percent</i>	<i>Percent</i>	<i>Million Pounds</i>	<i>Million Pounds</i>	<i>Percent</i>
Beef	2,199.4	2,051.3	2,086.5	95	102	2,199.4	2,086.5	95
Veal	11.0	13.0	11.7	106	90	11.0	11.7	106
Pork	2,143.4	2,036.8	2,012.9	94	99	2,143.4	2,012.9	94
Lamb & Mutton	14.2	14.5	12.7	90	88	14.2	12.7	90
Total Red Meat <sup>3</sup>	4,368.0	4,115.6	4,123.8	94	100	4,368.0	4,123.8	94

<sup>1</sup> Based on packers' dressed weights and excludes farm slaughter.

<sup>2</sup> Accumulated totals and percentages based on unrounded data.

<sup>3</sup> Totals may not equal sum of the parts due to rounding.

**Livestock Slaughter: Number and Average Weights, United States <sup>1</sup>**

Species	Unit	Jan 2008	Dec 2008	Jan 2009	Jan 09 % of		Jan <sup>2</sup>		
					Jan 2008	Dec 2008	2008	2009	09 % of 08
					<i>Percent</i>	<i>Percent</i>			<i>Prct</i>
<b>Cattle No.</b>									
Fed. Insp.	Thou	2,847.4	2,623.0	2,668.1	94	102	2,847.4	2,668.1	94
Other	Thou	51.0	48.2	50.3	99	104	51.0	50.3	99
Comm'l. <sup>3</sup>	Thou	2,898.4	2,671.3	2,718.4	94	102	2,898.4	2,718.4	94
<b>Live Wt/Hd</b>									
Fed. Insp.	Lbs	1,294	1,306	1,309	101	100	1,294	1,309	101
Other	Lbs	1,141	1,139	1,141	100	100	1,141	1,141	100
Comm'l.	Lbs	1,291	1,303	1,306	101	100	1,291	1,306	101
<b>Calves No.</b>									
Fed. Insp.	Thou	70.4	92.8	83.6	119	90	70.4	83.6	119
Other	Thou	1.1	1.3	1.1	99	81	1.1	1.1	99
Comm'l. <sup>3</sup>	Thou	71.5	94.1	84.7	119	90	71.5	84.7	119
<b>Live Wt/Hd</b>									
Fed. Insp.	Lbs	267	243	243	91	100	267	243	91
Other	Lbs	416	416	404	97	97	416	404	97
Comm'l.	Lbs	269	245	245	91	100	269	245	91
<b>Hogs No.</b>									
Fed. Insp.	Thou	10,474.1	10,053.4	9,845.8	94	98	10,474.1	9,845.8	94
Other	Thou	83.1	91.2	76.5	92	84	83.1	76.5	92
Comm'l. <sup>3</sup>	Thou	10,557.1	10,144.6	9,922.3	94	98	10,557.1	9,922.3	94
<b>Live Wt/Hd</b>									
Fed. Insp.	Lbs	273	271	272	100	101	273	272	100
Other	Lbs	239	232	239	100	103	239	239	100
Comm'l.	Lbs	273	270	272	100	101	273	272	100
<b>Sheep&amp;Lambs No.</b>									
Fed. Insp.	Thou	201.6	212.5	178.4	88	84	201.6	178.4	88
Other	Thou	11.8	18.3	11.0	94	60	11.8	11.0	94
Comm'l. <sup>3</sup>	Thou	213.4	230.8	189.4	89	82	213.4	189.4	89
<b>Live Wt/Hd</b>									
Fed. Insp.	Lbs	141	137	143	101	105	141	143	101
Other	Lbs	102	100	101	99	101	102	101	99
Comm'l.	Lbs	139	134	141	101	105	139	141	101
<b>Goats No.</b>									
Fed. Insp.	Thou	49.1	70.9	47.7	97	67	49.1	47.7	97
Other	Thou	12.4	23.5	11.1	90	47	12.4	11.1	90
Comm'l. <sup>3</sup>	Thou	61.5	94.5	58.8	96	62	61.5	58.8	96
<b>Live Wt/Hd</b>									
Fed. Insp.	Lbs	63	62	61	98	100	63	61	98
Other	Lbs	50	72	73	148	101	50	73	148
Comm'l.	Lbs	60	64	64	106	99	60	64	106
<b>Bison No.</b>									
Fed. Insp.	Thou	4.8	4.5	4.4	92	98	4.8	4.4	92
Other	Thou	1.8	1.4	1.6	90	116	1.8	1.6	90
Comm'l. <sup>3</sup>	Thou	6.5	5.8	6.0	92	103	6.5	6.0	92

<sup>1</sup> Excludes slaughter on farms.

<sup>2</sup> Accumulated totals and percentages based on unrounded data.

<sup>3</sup> Totals may not equal sum of the parts due to rounding.

**Commercial Red Meat Production: By State and United States <sup>1</sup>**

State	Jan 2008	Dec 2008	Jan 2009	Jan 09 as % of <sup>2</sup>	
				Jan 2008	Dec 2008
	<i>Million Pounds</i>	<i>Million Pounds</i>	<i>Million Pounds</i>	<i>Percent</i>	<i>Percent</i>
AL	2.3	1.7	1.8	79	108
AK			0.1		
AZ	34.0	33.7	31.5	93	93
AR	5.5	5.7	5.5	101	96
CA	148.4	149.6	147.9	100	99
CO	175.5	164.3	170.4	97	104
DE-MD	3.4	3.4	3.2	95	93
FL	8.2	7.7	8.3	102	108
GA	14.2	11.2	12.0	85	108
HI	0.9	0.9	0.8	89	92
ID	16.3	19.4	20.5	126	106
IL	274.4	256.5	249.6	91	97
IN	158.6	146.1	145.9	92	100
IA	655.1	599.3	611.7	93	102
KS	484.1	421.0	417.2	86	99
KY	55.0	54.5	48.7	89	89
LA	0.6	0.6	0.5	83	85
MI	42.5	45.1	41.7	98	93
MN	232.4	222.1	217.4	94	98
MS	1.4	1.5	1.4	100	91
MO	157.9	147.2	155.8	99	106
MT	1.4	1.4	1.1	77	73
NE	618.1	592.1	584.8	95	99
NV	0.1	0.1	0.1	100	97
N ENG <sup>3</sup>	1.1	1.4	1.2	107	89
NJ	4.2	4.6	4.0	95	86
NM	0.4	0.5	0.5	117	98
NY	3.0	3.5	3.1	105	91
NC	221.7	221.8	220.2	99	99
ND	2.7	2.2	2.5	95	116
OH	26.4	26.4	25.4	96	96
OK	98.5	98.2	99.5	101	101
OR	5.1	4.8	4.5	89	93
PA	113.6	116.7	105.0	92	90
SC	23.5	20.5	20.1	85	98
SD	105.8	87.6	101.6	96	116
TN	20.7	21.1	20.8	101	98
TX	403.7	399.3	414.8	103	104
UT	42.5	42.3	41.3	97	98
VA	48.9	46.4	44.0	90	95
WA	76.3	65.3	68.0	89	104
WV	0.7	0.9	0.8	117	83
WI	126.5	113.3	113.5	90	100
WY	0.6	0.6	0.6	112	103
US	4,415.9	4,162.7	4,169.6	94	100

<sup>1</sup> Includes total beef, veal, pork, lamb, and mutton.

<sup>2</sup> Percentages based on unrounded data.

<sup>3</sup> N ENG includes CT, ME, MA, NH, RI, and VT.

**Commercial Cattle Slaughter: By State and United States,  
January 2008 and 2009<sup>1</sup>**

State	Number Slaughtered		Total Live Weight		Average Live Weight	
	2008	2009	2008	2009	2008	2009
	<i>1,000 Head</i>	<i>1,000 Head</i>	<i>1,000 Pounds</i>	<i>1,000 Pounds</i>	<i>Pounds</i>	<i>Pounds</i>
AL	0.4	0.4	356	349	857	904
AK		0.1		52		1,027
AZ	43.1	45.1	60,173	57,860	1,403	1,290
AR	1.0	0.8	1,067	780	1,049	947
CA	142.2	144.5	182,388	185,634	1,308	1,304
CO	208.3	192.4	272,887	262,106	1,311	1,363
DE-MD	3.7	3.5	4,847	4,556	1,314	1,288
FL						
GA		22.4		22,047		991
HI	1.0	0.9	1,198	1,038	1,142	1,130
ID	20.9	28.5	25,320	35,565	1,233	1,267
IL						
IN	4.0	3.6	4,237	3,845	1,054	1,058
IA						
KS	596.6	492.8	758,815	643,668	1,272	1,306
KY	2.0	1.9	1,925	1,874	942	968
LA	0.6	0.6	463	421	770	734
MI	49.0	48.0	67,681	66,861	1,393	1,402
MN	71.9	76.2	99,949	105,561	1,401	1,394
MS	0.1	0.1	66	61	739	794
MO	8.9	8.5	10,551	10,220	1,198	1,206
MT	1.7	1.3	2,022	1,592	1,202	1,185
NE	583.0	542.7	779,707	736,839	1,339	1,360
NV	0.1	0.1	135	137	1,106	943
N ENG <sup>2</sup>	1.2	1.4	1,342	1,443	1,081	1,057
NJ	2.4	2.8	2,960	3,097	1,239	1,139
NM	0.5	0.6	495	556	1,067	1,006
NY	2.4	2.6	2,868	3,072	1,193	1,196
NC	19.7	18.3	22,780	21,208	1,158	1,164
ND	1.1	1.2	1,425	1,554	1,266	1,250
OH	10.2	9.8	12,006	11,668	1,191	1,203
OK	2.4	2.6	2,691	2,809	1,127	1,075
OR	3.1	3.2	3,627	3,780	1,205	1,221
PA	84.5	77.3	107,429	97,506	1,282	1,277
SC	13.8	13.1	15,104	14,363	1,105	1,104
SD						
TN	2.6	2.9	2,276	2,532	888	890
TX	526.6	533.9	651,874	673,235	1,241	1,265
UT	53.0		67,955		1,286	
VA	1.2	1.0	1,261	993	1,046	1,011
WA	96.1	87.4	124,108	112,103	1,297	1,287
WV	1.0	1.1	1,056	1,216	1,021	1,068
WI	150.6	141.8	202,959	187,367	1,361	1,335
WY	0.7	0.8	819	952	1,144	1,181
US <sup>3</sup>	2,898.4	2,718.4	3,728,444	3,537,601	1,291	1,306

<sup>1</sup> Includes slaughter under Federal inspection and other Commercial slaughter, excludes farm slaughter.

<sup>2</sup> N ENG includes CT, ME, MA, NH, RI, and VT.

<sup>3</sup> States with no data printed are still included in the US total, data not printed to avoid disclosing individual operations. Accumulated totals and percentages based on unrounded data.



**Commercial Calf Slaughter: By State and United States,  
January 2008 and 2009 <sup>1</sup>**

State	Number Slaughtered		Total Live Weight		Average Live Weight	
	2008	2009	2008	2009	2008	2009
	<i>1,000 Head</i>	<i>1,000 Head</i>	<i>1,000 Pounds</i>	<i>1,000 Pounds</i>	<i>Pounds</i>	<i>Pounds</i>
AL						
AK						
AZ						
AR						
CA	15.0	23.7	1,755	2,617	118	112
CO						
DE-MD	0.2	0.2	50	56	241	292
FL						
GA	0.1	0.1	33	50	433	429
HI						
ID						
IL	2.6	5.4	1,092	1,470	415	287
IN						
IA						
KS						
KY						
LA	0.3	0.3	136	173	514	514
MI	1.8	1.5	658	657	377	436
MN						
MS						
MO	0.1	0.1	24	21	379	347
MT						
NE						
NV						
N ENG <sup>2</sup>	0.3	0.4	84	67	303	189
NJ	6.1	5.2	2,510	2,231	410	425
NM		0.9		89		100
NY	17.8	19.1	1,763	2,027	103	109
NC	0.1	0.1	65	72	518	514
ND						
OH	0.1	4.2	19	1,936	348	462
OK		0.1		24		422
OR						
PA	14.0	11.6	5,454	4,865	389	420
SC						
SD						
TN	0.1	0.1	34	36	423	434
TX	1.5	2.8	920	655	600	234
UT						
VA						
WA						
WV						
WI						
WY						
US <sup>3</sup>	71.5	84.7	18,985	20,463	269	245

<sup>1</sup> Includes slaughter under Federal inspection and other Commercial slaughter, excludes farm slaughter.

<sup>2</sup> N ENG includes CT, ME, MA, NH, RI, and VT.

<sup>3</sup> States with no data printed are still included in the US total, data not printed to avoid disclosing individual operations. Accumulated totals and percentages based on unrounded data.

**Commercial Hog Slaughter: By State and United States,  
January 2008 and 2009 <sup>1</sup>**

State	Number Slaughtered		Total Live Weight		Average Live Weight	
	2008	2009	2008	2009	2008	2009
	<i>1,000 Head</i>	<i>1,000 Head</i>	<i>1,000 Pounds</i>	<i>1,000 Pounds</i>	<i>Pounds</i>	<i>Pounds</i>
AL	8.4	6.7	3,828	2,950	455	440
AK	0.1	0.1	15	47	241	345
AZ	0.3	0.1	44	42	154	301
AR	16.6	17.0	7,450	7,686	449	451
CA	232.4	229.8	56,304	54,562	243	238
CO	0.8	0.7	192	177	245	249
DE-MD	1.5	1.5	408	409	265	268
FL	7.7	4.4	1,103	729	144	165
GA	11.1	5.5	2,435	1,436	219	261
HI	1.5	1.4	331	322	226	229
ID	15.0	10.9	3,895	2,770	261	255
IL	1,015.2	891.1	284,711	247,754	281	278
IN	763.3	700.1	204,909	189,318	269	271
IA	2,973.9	2,824.9	808,882	764,869	272	271
KS						
KY						
LA	1.4	1.0	295	178	205	182
MI	10.2	9.8	3,933	3,784	385	388
MN	907.7	811.8	238,740	215,190	264	266
MS	6.7	6.0	1,922	1,935	287	324
MO	721.8	723.0	201,375	198,720	279	275
MT	1.0	0.7	258	178	248	247
NE	720.1	665.5	195,065	180,833	271	272
NV						
N ENG <sup>2</sup>	1.4	1.4	303	330	220	230
NJ	9.9	9.9	996	997	100	101
NM	0.1	0.1	34	23	261	260
NY	2.2	2.0	411	350	186	175
NC	1,044.9	1,039.7	278,150	277,402	266	267
ND	10.7	9.4	2,766	2,423	260	258
OH	98.9	87.9	27,160	24,365	275	278
OK	457.8	469.2	127,911	128,882	280	275
OR	16.0	12.6	4,131	3,198	259	254
PA	251.4	235.4	64,672	60,619	258	258
SC						
SD	490.8	466.3	126,600	122,263	258	262
TN	60.8	62.6	28,771	28,589	474	458
TX	34.3	37.4	8,739	8,811	255	235
UT	5.9	4.6	975	820	166	177
VA	240.7	214.4	63,803	57,189	265	267
WA	2.6	2.2	513	435	196	200
WV	0.6	0.5	159	129	270	245
WI	49.5	43.2	22,061	18,395	453	435
WY	0.3	0.3	86	75	273	269
US <sup>3</sup>	10,557.1	9,922.3	2,875,469	2,696,971	273	272

<sup>1</sup> Includes slaughter under Federal inspection and other Commercial slaughter, excludes farm slaughter.

<sup>2</sup> N ENG includes CT, ME, MA, NH, RI, and VT.

<sup>3</sup> States with no data printed are still included in the US total, data not printed to avoid disclosing individual operations. Accumulated totals and percentages based on unrounded data.

**Commercial Sheep and Lamb Slaughter: By State and United States,  
January 2008 and 2009<sup>1</sup>**

State	Number Slaughtered		Total Live Weight		Average Live Weight	
	2008	2009	2008	2009	2008	2009
	<i>1,000 Head</i>	<i>1,000 Head</i>	<i>1,000 Pounds</i>	<i>1,000 Pounds</i>	<i>Pounds</i>	<i>Pounds</i>
AL						
AK						
AZ	0.1	0.1	6	6	108	87
AR	0.1		7		124	
CA						
CO	84.5	77.3	12,982	12,519	154	162
DE-MD	2.7	2.9	275	287	100	99
FL	0.1	0.3	7	14	63	56
GA	0.6	0.4	69	35	116	86
HI						
ID	0.3	0.2	37	26	127	130
IL						
IN	1.9	2.2	206	251	110	111
IA	31.8	28.8	4,906	4,338	155	151
KS	0.2	0.3	23	30	95	90
KY	0.8	0.9	100	109	123	127
LA	0.2	0.2	16	11	83	58
MI	17.3	13.6	2,299	1,750	134	129
MN	0.4	1.0	45	130	120	127
MS						
MO	0.4	0.4	43	50	115	111
MT	0.3	0.3	32	29	103	104
NE	0.1	0.1	16	8	134	114
NV						
N ENG <sup>2</sup>	2.1	2.4	192	215	93	88
NJ	9.1	8.5	785	704	86	83
NM	1.3	1.1	186	158	148	143
NY	2.4	2.3	196	209	82	89
NC	0.6	0.5	46	44	82	81
ND	0.1	0.1	9	7	85	119
OH	0.8	0.9	86	95	105	112
OK	0.1	0.1	11	13	97	100
OR	1.6	1.5	228	208	139	136
PA	3.6	3.4	368	332	102	98
SC		0.1		9		81
SD	0.7	0.2	86	22	126	121
TN	1.1	1.0	81	76	77	76
TX	2.9	2.6	239	204	83	80
UT	2.6	3.0	356	418	136	138
VA	1.1	1.2	108	117	98	96
WA	0.7	0.9	96	126	140	135
WV						
WI	0.8	0.7	100	102	130	136
WY	0.1	0.1	17	15	132	129
US <sup>3</sup>	213.4	189.4	29,649	26,649	139	141

<sup>1</sup> Includes slaughter under Federal inspection and other Commercial slaughter, excludes farm slaughter.

<sup>2</sup> N ENG includes CT, ME, MA, NH, RI, and VT.

<sup>3</sup> States with no data printed are still included in the US total, data not printed to avoid disclosing individual operations. Accumulated totals and percentages based on unrounded data.

**Classification of Livestock Slaughtered Under Federal Inspection:  
United States**

Item	Jan 2008	Dec 2008	Jan 2009	Jan <sup>1</sup>		Jan 2008	Dec 2008	Jan 2009	Jan <sup>1</sup>	
				2008	2009				2008	2009
	<i>1,000 Head</i>	<i>1,000 Head</i>	<i>1,000 Head</i>	<i>1,000 Head</i>	<i>1,000 Head</i>	<i>Percent of Total</i>	<i>Percent of Total</i>	<i>Percent of Total</i>	<i>Percent of Total</i>	<i>Percent of Total</i>
Class <sup>2</sup>										
Cattle										
Steers	1,391	1,272	1,281	1,391	1,281	48.8	48.5	48.0	48.8	48.0
Heifers	867	796	781	867	781	30.5	30.4	29.3	30.5	29.3
All Cows	545	517	566	545	566	19.1	19.7	21.2	19.1	21.2
Dairy Cows	236	229	281	236	281	8.3	8.7	10.5	8.3	10.5
Other Cows	309	288	285	309	285	10.9	11.0	10.7	10.9	10.7
Bulls	45	38	40	45	40	1.6	1.5	1.5	1.6	1.5
Total <sup>1</sup>	2,847	2,623	2,668	2,847	2,668	100.0	100.0	100.0	100.0	100.0
Calves & Vealers	70	93	84	70	84	100.0	100.0	100.0	100.0	100.0
Hogs										
Barrow & Gilts	10,128	9,749	9,544	10,128	9,544	96.7	97.0	96.9	96.7	96.9
Sows	304	271	267	304	267	2.9	2.7	2.7	2.9	2.7
Boars	42	33	35	42	35	0.4	0.3	0.4	0.4	0.4
Total <sup>1</sup>	10,474	10,053	9,846	10,474	9,846	100.0	100.0	100.0	100.0	100.0
Sheep										
Mature Sheep	9	11	8	9	8	4.5	5.2	4.7	4.5	4.7
Lambs & Yrlngs	193	201	170	193	170	95.5	94.8	95.3	95.5	95.3
Total <sup>1</sup>	202	213	178	202	178	100.0	100.0	100.0	100.0	100.0
Average Dressed Weight										
	<i>Pounds</i>	<i>Pounds</i>	<i>Pounds</i>	<i>Pounds</i>	<i>Pounds</i>					
Cattle										
Steers <sup>3</sup>	775	785	785	775	785					
Heifers <sup>3</sup>	832	852	853	832	853					
All Cows <sup>3</sup>	773	789	790	773	790					
Bulls <sup>3</sup>	624	606	614	624	614					
Bulls <sup>3</sup>	878	869	874	878	874					
Calves & Vealers	159	142	142	159	142					
Hogs										
Barrow Gilts <sup>4</sup>	205	203	205	205	205					
Sows <sup>4</sup>	202	200	202	202	202					
Boars <sup>4</sup>	306	305	303	306	303					
Boars <sup>4</sup>	213	201	202	213	202					
Sheep										
Mature Sheep <sup>5</sup>	70	68	72	70	72					
Mature Sheep <sup>5</sup>	67	66	65	67	65					
Lamb & Yrlngs <sup>5</sup>	71	69	72	71	72					

<sup>1</sup> Total and percentages based on unrounded data.

<sup>2</sup> Species totals and classification reported by food inspectors, Inspection Operations, FSIS.

<sup>3</sup> Included in cattle average dressed weight.

<sup>4</sup> Included in hog average dressed weight.

<sup>5</sup> Included in sheep average dressed weight.

**Federally Inspected Slaughter: By Region and United States,  
January 2009<sup>1</sup>**

Standard Federal Regions	Cattle							Calves
	Total <sup>2</sup>	Steers	Heifers	Cows			Bulls	Total
				All	Dairy	Other		
	<i>1,000 Head</i>	<i>1,000 Head</i>	<i>1,000 Head</i>	<i>1,000 Head</i>	<i>1,000 Head</i>	<i>1,000 Head</i>	<i>1,000 Head</i>	<i>1,000 Head</i>
1	1.1	0.5						0.3
2	5.2	1.7	0.3	2.8	2.4	0.5	0.3	24.4
3	79.3	31.2		39.7	31.6	8.1		11.8
4	69.6	1.6	0.5	59.2	15.7	43.5	8.3	0.4
5	337.8	133.7	42.9	153.5	82.0	71.6	7.7	18.7
6	532.8	264.9	157.0	100.1	32.9	67.2	10.9	3.7
7	1,077.3	586.5	422.5	62.8	2.2	60.6	5.5	
8	257.1	129.9	107.6					
9	189.9	84.3	11.2	92.1	84.8	7.3	2.2	23.5
10	118.0	46.4	31.5	37.7	22.3	15.4	2.4	
US <sup>2</sup>	2,668.1	1,280.7	781.1	566.3	281.1	285.2	40.0	83.6
	Hogs				Sheep			
	Total <sup>2</sup>	Barrows & Gilts	Sows	Boars	Total <sup>2</sup>	Mature Sheep	Lambs & Yearlings	
	<i>1,000 Head</i>	<i>1,000 Head</i>	<i>1,000 Head</i>	<i>1,000 Head</i>	<i>1,000 Head</i>	<i>1,000 Head</i>	<i>1,000 Head</i>	<i>1,000 Head</i>
1	1.1	1.0			2.3	0.2	2.1	
2	11.7	11.5	0.1	0.1	10.2	1.1	9.1	
3	449.3	439.7	1.4	8.2	7.8	0.3	7.4	
4	1,402.6	1,318.0	82.5	2.2	2.9	0.8	2.1	
5	2,513.4	2,405.2	104.7	3.4	23.1	2.6	20.5	
6	515.4	490.3	24.4	0.7				
7	4,223.5	4,149.7	53.5	20.3	29.3	0.3	29.0	
8	478.3	478.0	0.3		79.7	1.7	78.0	
9	225.8	225.7	0.1					
10	24.9	24.7	0.1		1.6	0.1	1.5	
US <sup>2</sup>	9,845.8	9,543.9	267.0	34.9	178.4	8.5	169.9	

<sup>1</sup> States included in regions are as follows: 1- CT, ME, NH, VT, MA, & RI; 2- NY & NJ; 3- DE-MD, PA, WV, & VA; 4- AL, FL, GA, KY, MS, NC, SC, & TN; 5- IL, IN, MI, MN, OH, & WI; 6- AR, LA, NM, OK, & TX; 7- IA, KS, MO, & NE; 8- CO, MT, ND, SD, UT, & WY; 9- AZ, CA, HI & NV; 10- AK, ID, OR, & WA.

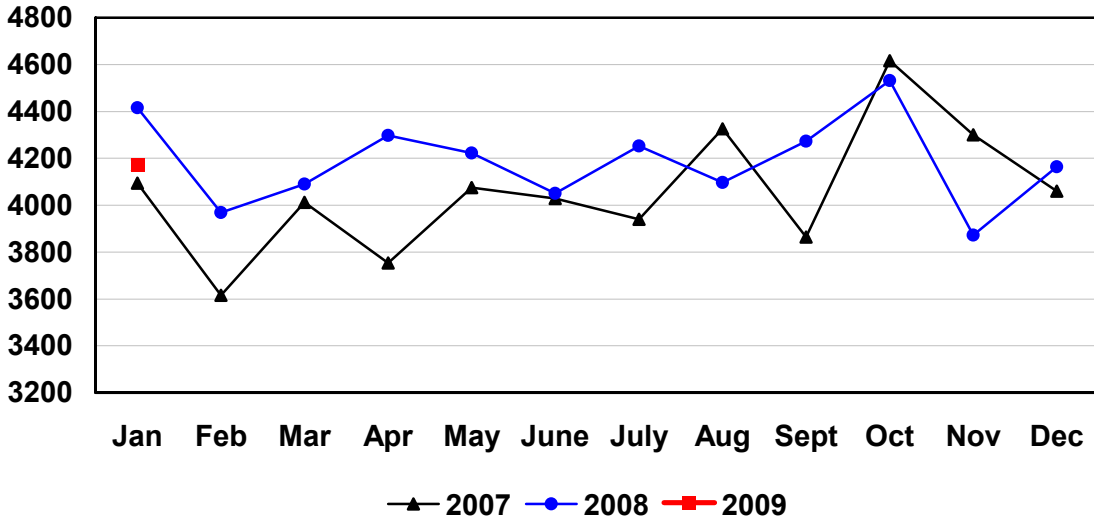
<sup>2</sup> Regions with no data printed are still included in the US and Region total, data not printed to avoid disclosing individual operations. Totals may not add due to rounding.

**Federally Inspected Slaughter: Percent of Total Commercial Slaughter by Species, United States**

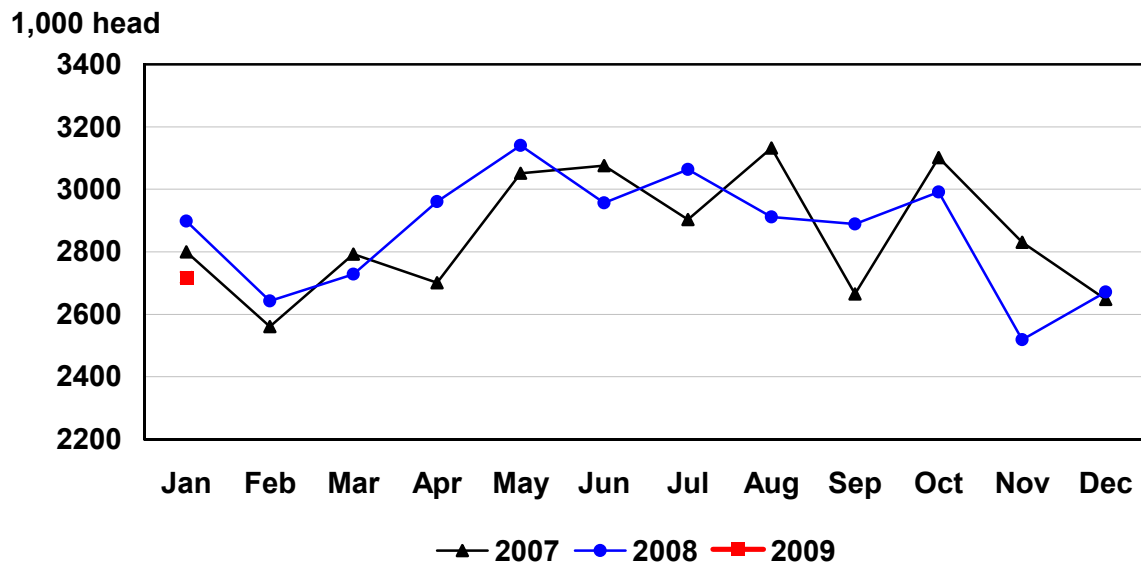
Species	Jan 2008	Dec 2008	Jan 2009	Jan - Jan	
				2008	2009
	<i>Percent</i>	<i>Percent</i>	<i>Percent</i>	<i>Percent</i>	<i>Percent</i>
Cattle	98.2	98.2	98.1	98.2	98.1
Calves	98.5	98.6	98.7	98.5	98.7
Hogs	99.2	99.1	99.2	99.2	99.2
Sheep	94.5	92.1	94.2	94.5	94.2

## U.S. Monthly Commercial Red Meat Production

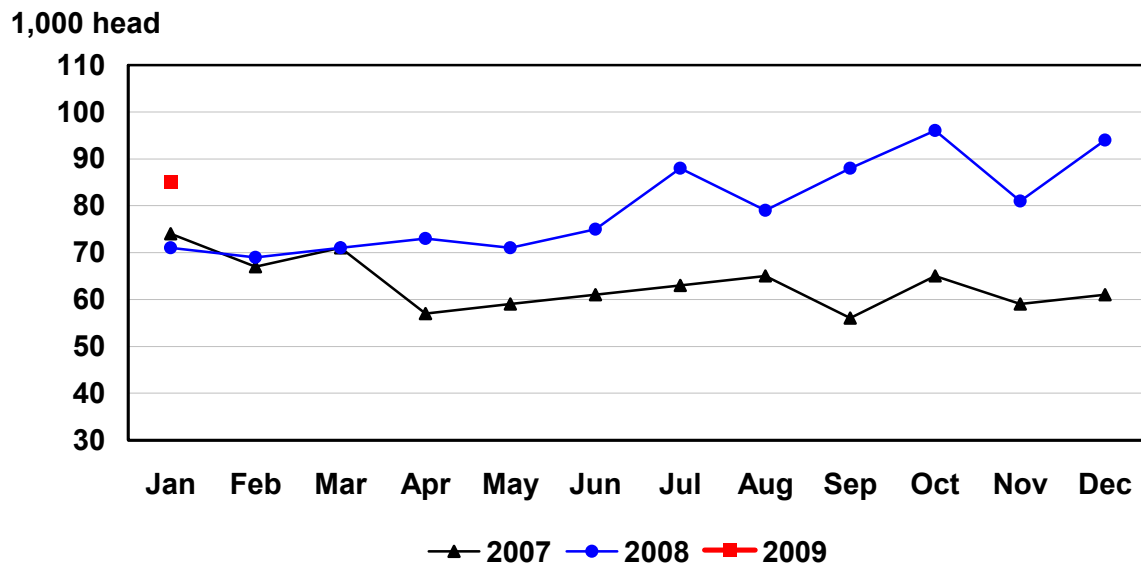
Million Pounds



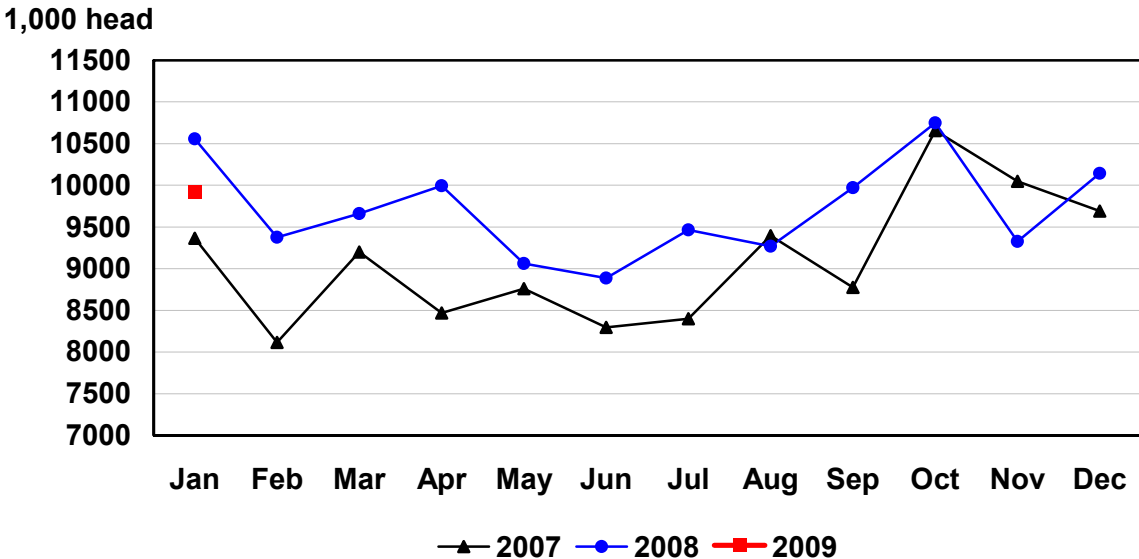
# U.S. Monthly Commercial Slaughter Cattle



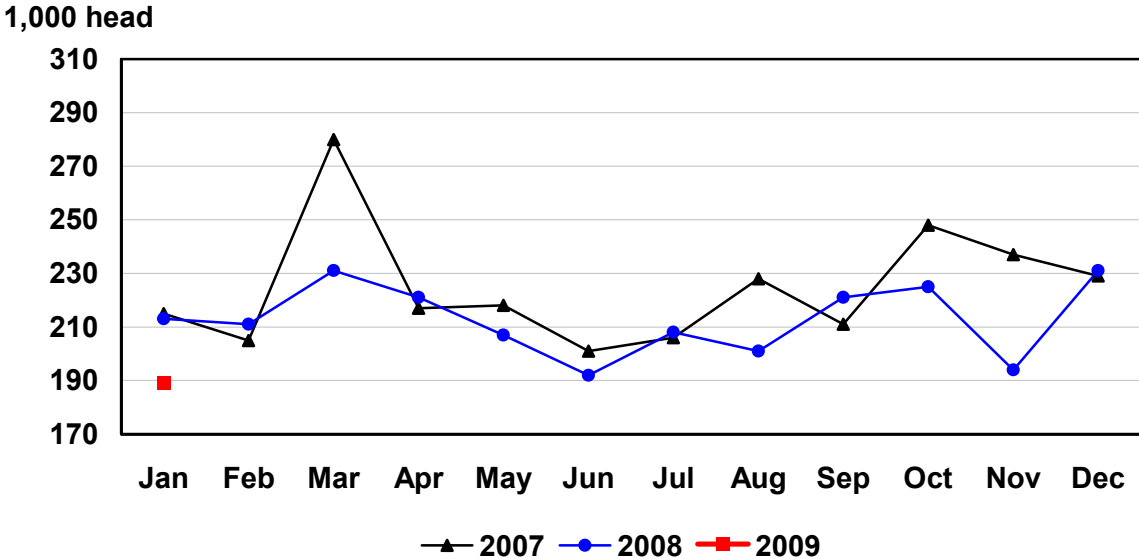
# U.S. Monthly Commercial Slaughter Calves



# U.S. Monthly Commercial Slaughter Hogs

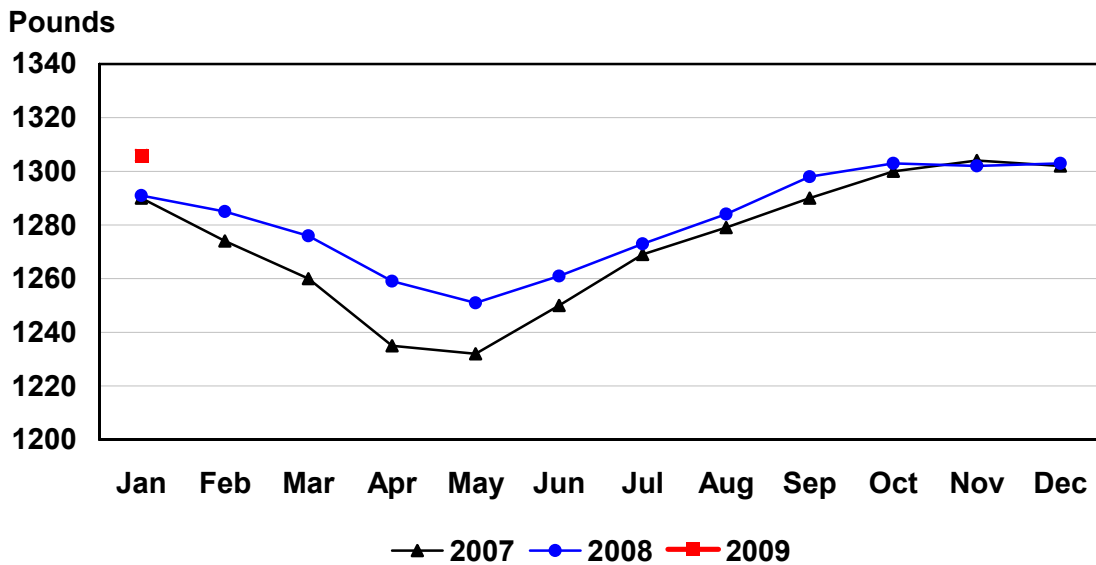


# U.S. Monthly Commercial Slaughter Sheep

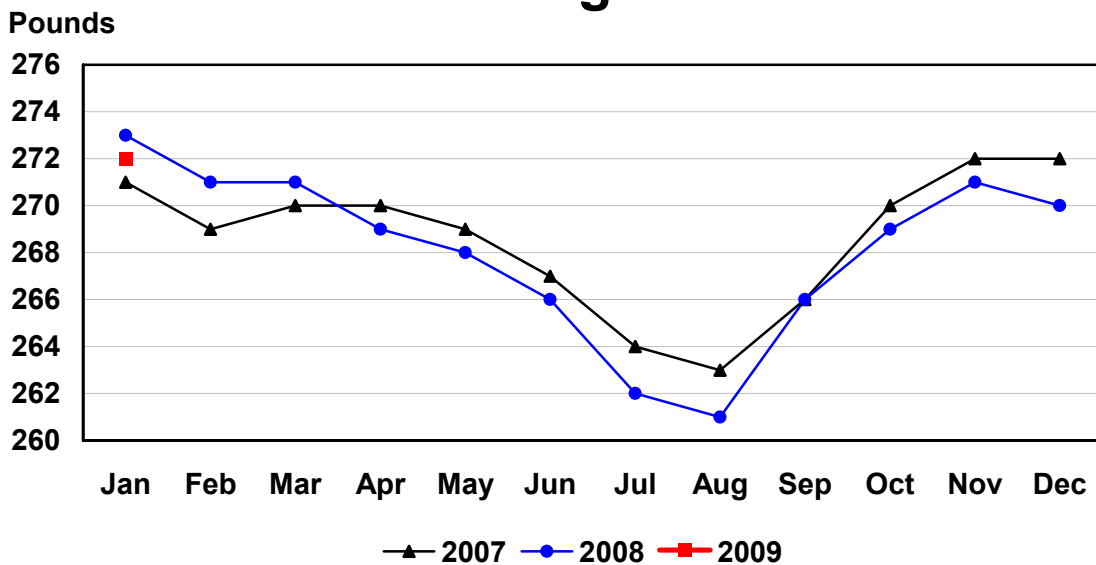




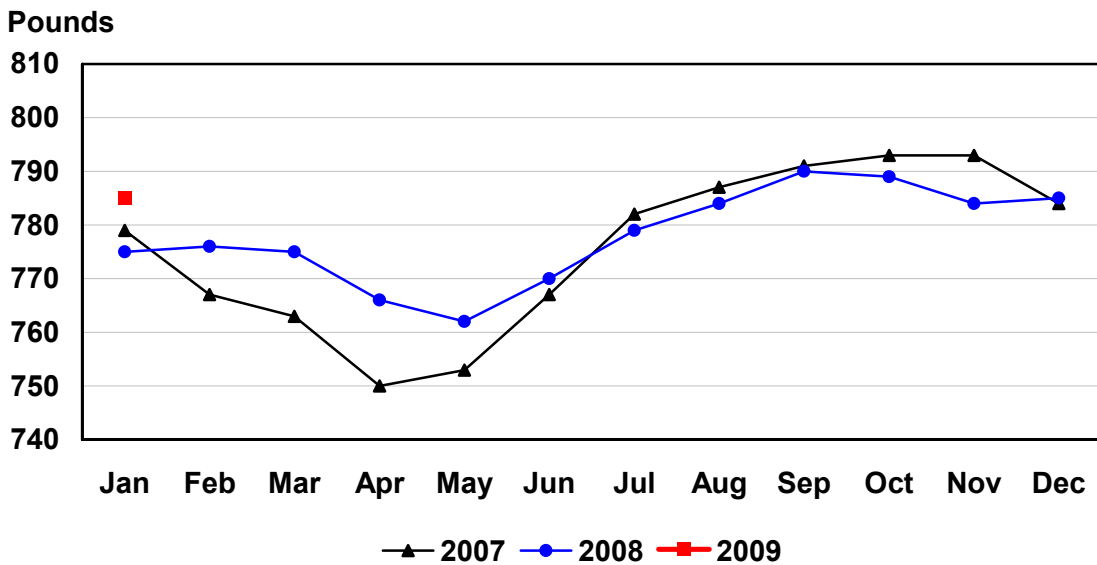
# U.S. Monthly Commercial Slaughter Average Live Weight Cattle



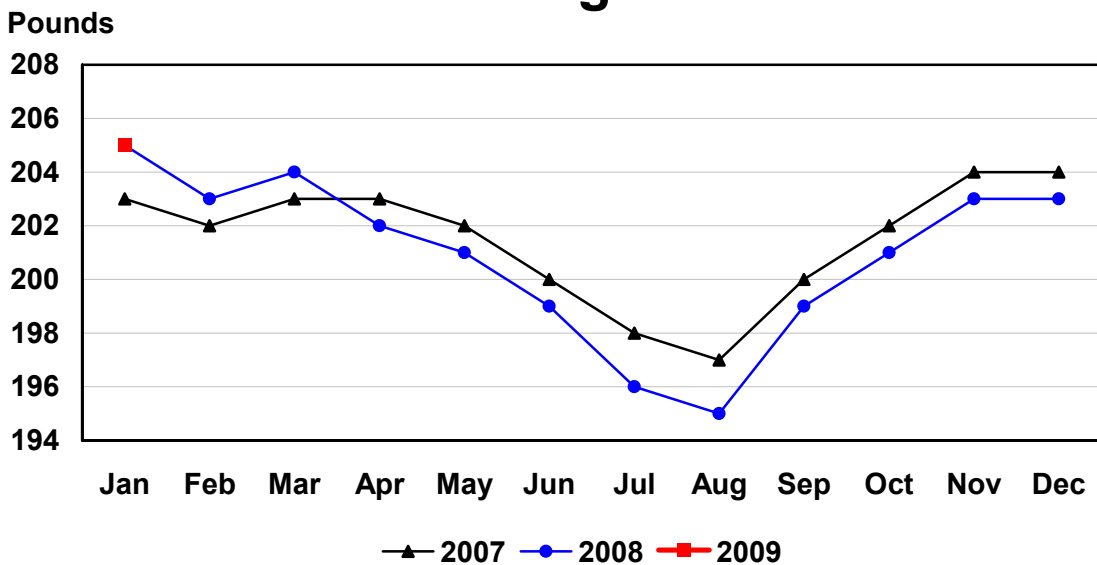
# U.S. Monthly Commercial Slaughter Average Live Weight Hogs



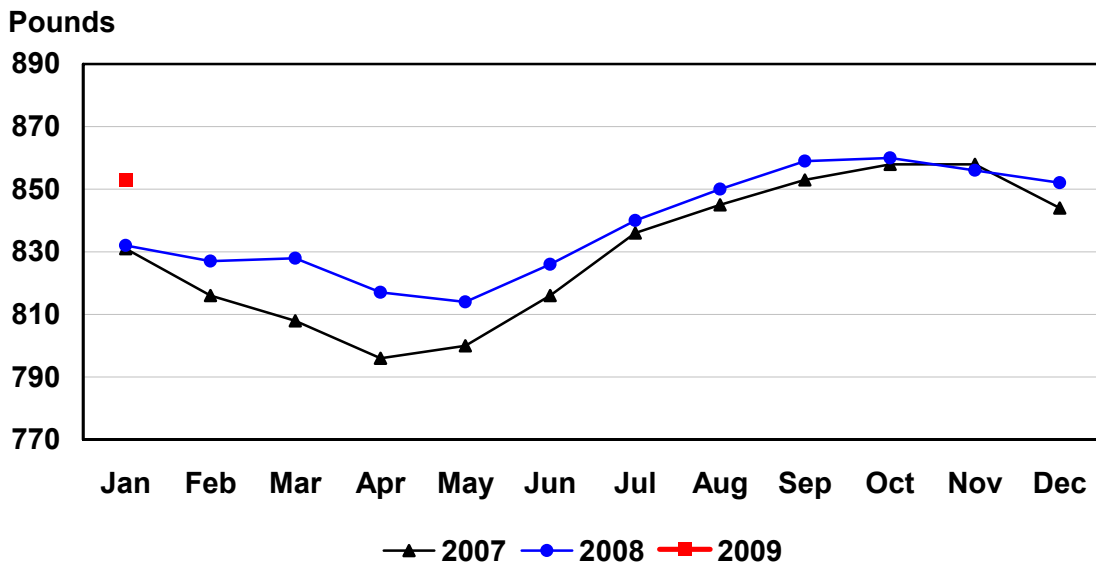
# U.S. Monthly Federally Inspected Average Dressed Weight Cattle



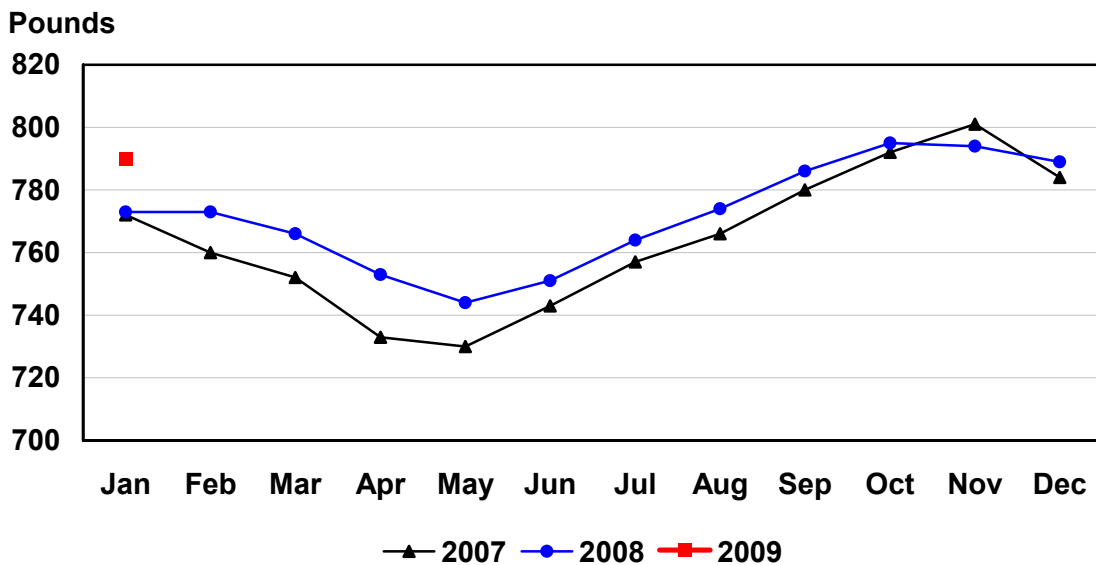
# U.S. Monthly Federally Inspected Average Dressed Weight Hogs



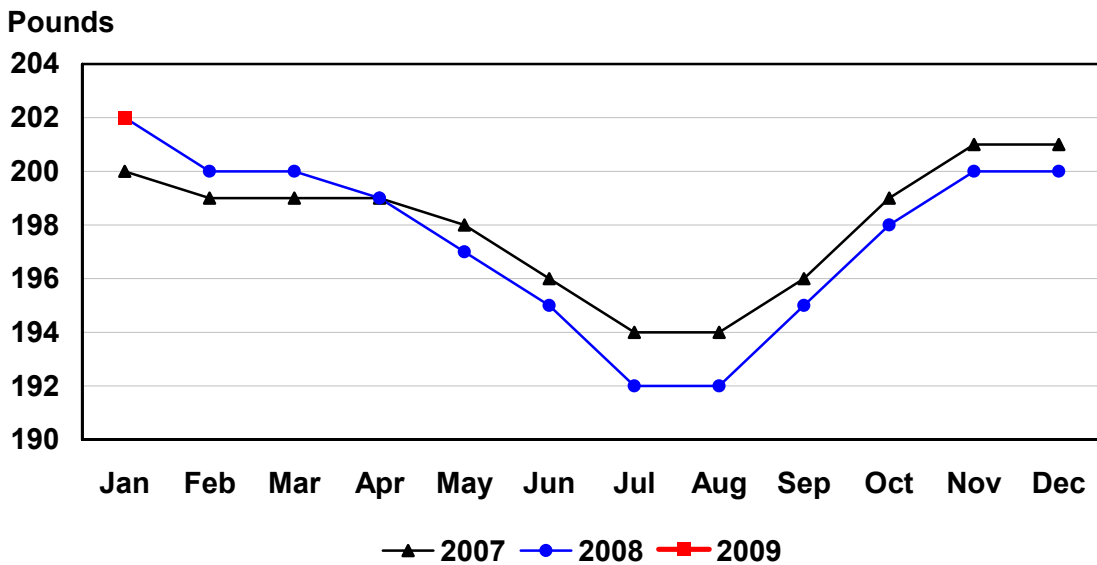
## U.S. Monthly Federally Inspected Average Dressed Weight Steers



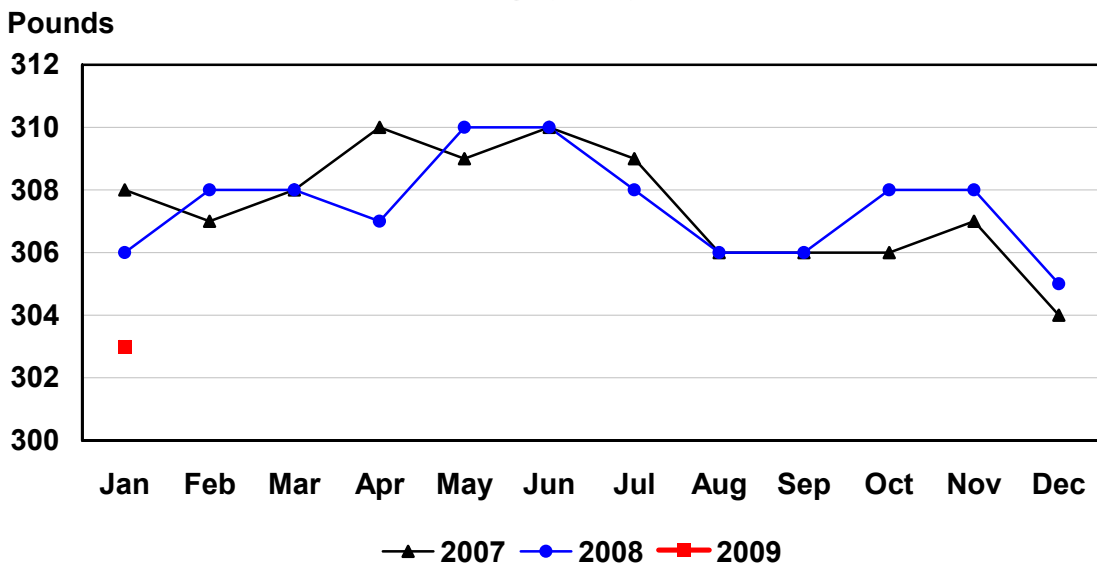
## U.S. Monthly Federally Inspected Average Dressed Weight Heifers



## U.S. Monthly Federally Inspected Average Dressed Weight Barrows and Gilts



## U.S. Monthly Federally Inspected Average Dressed Weight Sows



## Reliability of Livestock Slaughter Estimates

**Data Sources:** Primary data for the commercial livestock slaughter estimates are obtained from electronic reports completed by inspectors from the Food Safety and Inspection Service (FSIS), USDA, which provide daily counts of animals slaughtered in Federally Inspected (FI) plants, in addition to total live and dressed weights. These counts are combined with data from State-administered Non-Federally Inspected (NFI) slaughter plants to derive total commercial slaughter estimates. More than 95 percent of the total U.S. slaughter for any species is under Federal Inspection.

There are nearly 800 livestock slaughter plants in the U.S. operating under Federal Inspection and over 2,000 Non-Federally Inspected (State-inspected or custom-exempt) slaughter plants. Slaughter from State-inspected Talmedge-Aiken plants is included in FI totals (see Types of Plants, page 18). To prevent duplication in reporting between FI and NFI plants and assure all FI plants are included, certificates prepared by FSIS identifying operating status are constantly monitored

**Revision Policy:** Number of head slaughtered, live weights, and dressed weights are subject to revision the following month after the monthly release. Annual totals are published in the slaughter summary each March which includes any revisions made to current and previous year's published data. Revisions are generally the result of late reports received from slaughter plants and are usually less than one-half of one percent. No revisions will be made to the previous year's data after the publication of the annual summary in March.

**Procedures and Reliability:** The livestock slaughter data is obtained electronically on a daily basis and summarized approximately two weeks after the week of slaughter. An edit compares each plant's data with the historical data for that plant. Data are checked for unusual values for head kill, patterns of kill, average weights, and dressing percent, based on each plant's past operating profile. In addition, the edit provides a listing of missing reports for follow-up contact with FSIS. Average live and dressed weights and dressing percentages by State are compared with the previous weeks as an additional check. Fluctuations are frequently the result of plants permanently or temporarily closing and a shift in the species reported.

The FSIS District Veterinary Medical Specialists (DVMS) are contacted by e-mail or telephone for missing or potentially erroneous slaughter data. This assures that plants slaughtering a large number of head or several species are accounted for each week. Any corrections FSIS makes to the slaughter data are included in the summary.

Imputation may be necessary for incomplete reports. The imputation of live and dressed weights is based on the current week reported data of plants of similar size and location. Imputation for live and dressed weight data for cattle and hogs is less than 10 percent and 7 percent, respectively. The imputation for calves and sheep is more frequent and variable. If no data is received electronically or by other means, for plants slaughtering fewer than 50 total head weekly of only one species, data are imputed. The imputation of head for any plant is based on the historical data for that particular plant. The imputation of head slaughtered is rare but when necessary, the imputed head kill for missing plants usually is less than 1 percent of the U.S. head kill totals.

FI data are summarized weekly and accumulated to a monthly total for this release. These weekly totals are published by USDA's Agricultural Marketing Service (AMS) in **Livestock, Meat, Wool Market News**, Weekly Summary, and Statistics and are also available on the NASS website. NFI data are summarized monthly only.

Livestock slaughter estimates are based on a census of operating plants and therefore, have no sampling error. However, they may be subject to errors such as omissions, duplications and mistakes in reporting, recording and processing the data. These errors are minimized through rigid quality controls in the edit and summarization process, and a careful review of all reported data for consistency and reasonableness.

No data are published when an individual plant's data could be divulged. If not published, these data are still included in US and region totals. A review of the data is made annually to determine the publishable data.

### **Types of Livestock Slaughter Plants**

There are generally **four types** of slaughtering plants.

- (1) **Federally Inspected (FI) Plants:** Plants that transport meat interstate must employ federal inspectors to assure compliance with USDA standards. Any State whose commercial plants operate entirely under federal inspection may still have custom-exempt establishments for which NFI estimates are made.
- (2) **Talmedge-Aiken (TA) Plants:** Slaughter plants in which USDA is responsible for inspection. However, federal inspection is carried out by State employees. These plants are considered to be federally inspected.
- (3) **Non-Federally Inspected (NFI) Plants:** Plants which sell and transport only intrastate. State inspectors assure compliance with individual State standards for these NFI plants. Mobile slaughtering units are excluded and are considered farm slaughter.
- (4) **Custom-Exempt Plants:** Plants that do not sell meat but operate on a custom basis only are custom-exempt. The animals and meat are not inspected, but the facilities must meet health standards. These are considered NFI plants and head kill is included in NFI totals.

## Terms and Definitions Used for Livestock Slaughter Estimates

**Average Live Wight:** Excludes post-mortem condemnations

**Commercial Production:** Includes slaughter and meat production in federally inspected and other plants, but excludes animals slaughtered on farms.

**Dressed Weight:** The weight of a chilled animal carcass. Beef with kidney knob in; veal with hide off; lamb and mutton with pluck out; pork with leaf fat and kidneys out, jowls on and head off.

**Dressing Percent:** Usually expressed as a percentage yield of chilled carcass in relation to the weight of the live animal on hoof. For example, a live hog that weighed 200 pounds on hoof and yielded a carcass weighing 140 pounds would have a dressing percentage of 70.

**Food and Meat Inspection:** Includes examination, checking, or testing of a carcass and/or meat against established government standards and involves checking the facility for cleanliness, health of animals, or parts of animals and quality of the meat produced.

**Number of Head:** Includes post-mortem condemnations.

**Plant, Slaughter:** An establishment where animals are killed and butchered.

**Red Meat:** Red meat production is the carcass weight after slaughter excluding condemnation and is comprised of beef, veal, pork, and lamb and mutton. The FI red meat production is equal to the total carcass weight after slaughter. The NFI meat production formula is (NFI head kill) X (live weight) X (FI dressing percentage) = NFI red meat production.

**Slaughter:** Killing and butchering of animals primarily for food.

**Slaughter, Farm:** Animals slaughtered on farms primarily for home consumption. Excludes custom slaughter for farmers at commercial establishments, but includes mobile slaughtering on farms. These estimates appear only in the annual slaughter release.

**Total Live Weight:** Excludes post-mortem condemnations.

**Wholesome Meat Act:** Legislation that specifies that all meat produced for sale in the U.S. must be inspected. Meat that is transported interstate must be inspected in compliance with Federal (USDA) Standards.

### Information Contacts

Listed below are the commodity specialists in the Livestock Branch of the National Agricultural Statistics Service to contact for additional information.

Dan Kerestes, Chief, Livestock Branch .....	(202) 720-3570
Scott Hollis, Head, Livestock Section.....	(202) 690-2424
Jim Collom – Dairy Products.....	(202) 690-3236
Joe Gaynor – Dairy Products Prices.....	(202) 690-2168
Jason Hardegree – Cattle, Cattle on Feed .....	(202) 720-3040
Sherry Bertramsen – Livestock Slaughter.....	(515) 284-4340
Mike Miller – Milk Production and Milk Cows.....	(202) 720-3278
Everett Olbert – Sheep and Goats .....	(202) 720-4751
Nicholas Streff – Hogs and Pigs .....	(202) 720-3106

## ACCESS TO REPORTS!!

---

For your convenience, there are several ways to obtain NASS reports, data products, and services:

### INTERNET ACCESS

All NASS reports are available free of charge on the worldwide Internet. For access, connect to the Internet and go to the NASS Home Page at: [www.nass.usda.gov](http://www.nass.usda.gov).

### E-MAIL SUBSCRIPTION

All NASS reports are available by subscription free of charge direct to your e-mail address. Starting with the NASS Home Page at [www.nass.usda.gov](http://www.nass.usda.gov), under the right navigation, *Receive reports by Email*, click on **National** or **State**. Follow the instructions on the screen.

-----

### PRINTED REPORTS OR DATA PRODUCTS

**CALL OUR TOLL-FREE ORDER DESK: 800-999-6779 (U.S. and Canada)**  
**Other areas, please call 703-605-6220      FAX: 703-605-6900**  
**(Visa, MasterCard, check, or money order acceptable for payment.)**

-----

### ASSISTANCE

For **assistance** with general agricultural statistics or further information about NASS or its products or services, contact the **Agricultural Statistics Hotline** at **800-727-9540**, 7:30 a.m. to 4:00 p.m. ET, or e-mail: [nass@nass.usda.gov](mailto:nass@nass.usda.gov).

The U.S. Department of Agriculture (USDA) prohibits discrimination in all its programs and activities on the basis of race, color, national origin, age, disability, and where applicable, sex, marital status, familial status, parental status, religion, sexual orientation, genetic information, political beliefs, reprisal, or because all or part of an individual's income is derived from any public assistance program. (Not all prohibited bases apply to all programs.) Persons with disabilities who require alternative means for communication of program information (Braille, large print, audiotape, etc.) should contact USDA's TARGET Center at (202) 720-2600 (voice and TDD).

To file a complaint of discrimination, write to USDA, Director, Office of Civil Rights, 1400 Independence Avenue, S.W., Washington, D.C. 20250-9410, or call (800) 795-3272 (voice) or (202) 720-6382 (TDD). USDA is an equal opportunity provider and employer.