

# Livestock Slaughter

---

Released March 20, 2009, by the National Agricultural Statistics Service (NASS), Agricultural Statistics Board, U.S. Department of Agriculture. For information on *Livestock Slaughter* call Sherry Bertramsen at (515) 284-4340, office hours 7:00 a.m. to 4:00 p.m. CT.

## Lamb and Mutton Production at All-Time Record Low

**Commercial red meat production** for the United States totaled 3.83 billion pounds in February, down 4 percent from the 3.97 billion pounds produced in February 2008.

**Beef production**, at 1.99 billion pounds, was 3 percent below the previous year. Cattle slaughter totaled 2.53 million head, down 4 percent from February 2008. The average live weight was up 25 pounds from the previous year, at 1,310 pounds.

**Veal production** totaled 11.0 million pounds, slightly below February a year ago. Calf slaughter totaled 74,100 head, up 7 percent from February 2008. The average live weight was down 15 pounds from last year, at 257 pounds.

**Pork production** totaled 1.82 billion pounds, down 5 percent from the previous year. Hog kill totaled 8.91 million head, down 5 percent from February 2008. The average live weight was up 1 pound from the previous year, at 272 pounds.

**Lamb and mutton production**, at 12.8 million pounds, was down 15 percent from February 2008. Sheep slaughter totaled 180,100 head, 15 percent below last year. The average live weight was 142 pounds, unchanged from February a year ago.

**January to February 2009 commercial red meat production** was 7.99 billion pounds, down 5 percent from 2008. Accumulated beef production was down 4 percent from last year, veal was up 3 percent, pork was down 5 percent from last year, and lamb and mutton production was down 12 percent.

**February 2008** contained 21 weekdays (including one holiday) and 4 Saturdays.

**February 2009** contained 20 weekdays (including one holiday) and 4 Saturdays.



# Contents

	<b>Page</b>
Red Meat Production, Commercial and FI, by Type, U.S. ....	1
Livestock Slaughter, Number and Average Weights, by Species and Type of Slaughter, U.S. ....	2
Commercial Red Meat Production, by State and U.S. ....	3
Commercial Cattle Slaughter, Number, Total and Average Live Weight, by State and U.S. ....	4
Commercial Calf Slaughter, Number, Total and Average Live Weight, by State and U.S. ....	5
Commercial Hog Slaughter, Number, Total and Average Live Weight, by State and U.S. ....	6
Commercial Sheep and Lamb Slaughter, Number, Total and Average Live Weight, by State and U.S. ....	7
Federally Inspected Classification of Number and Average Dressed Weight, by Species and Class and U.S. ....	8
Federally Inspected Slaughter by Species and Class, by Region and U.S. ....	9
Federally Inspected Percent of Total Commercial, by Species, U.S. ....	11
Reliability Statement.....	18
Types of Livestock Slaughter Plants .....	19
Terms and Definitions .....	20
Information Contacts .....	20



**Commercial Red Meat Production: United States <sup>1</sup>**

Type	Feb 2008	Jan 2009	Feb 2009	Feb 09 % of		Jan - Feb <sup>2</sup>		
				Feb 2008	Jan 2009	2008	2009	09 as % of 08
	<i>Million Pounds</i>	<i>Million Pounds</i>	<i>Million Pounds</i>	<i>Percent</i>	<i>Percent</i>	<i>Million Pounds</i>	<i>Million Pounds</i>	<i>Percent</i>
Beef	2,038.6	2,118.4	1,985.2	97	94	4,271.4	4,103.6	96
Veal	11.0	12.0	11.0	100	92	22.3	23.0	103
Pork	1,902.7	2,026.0	1,816.1	95	90	4,061.7	3,842.1	95
Lamb & Mutton	15.0	13.3	12.8	85	96	29.7	26.0	88
Total Red Meat <sup>3</sup>	3,967.4	4,169.6	3,825.1	96	92	8,385.1	7,994.8	95

<sup>1</sup> Based on packers' dressed weights and excludes farm slaughter.

<sup>2</sup> Accumulated totals and percentages based on unrounded data.

<sup>3</sup> Totals may not equal sum of the parts due to rounding.

**Federally Inspected Red Meat Production: United States <sup>1</sup>**

Type	Feb 2008	Jan 2009	Feb 2009	Feb 09 % of		Jan - Feb <sup>2</sup>		
				Feb 2008	Jan 2009	2008	2009	09 as % of 08
	<i>Million Pounds</i>	<i>Million Pounds</i>	<i>Million Pounds</i>	<i>Percent</i>	<i>Percent</i>	<i>Million Pounds</i>	<i>Million Pounds</i>	<i>Percent</i>
Beef	2,009.6	2,086.5	1,954.6	97	94	4,209.0	4,041.0	96
Veal	10.8	11.7	10.8	100	92	21.8	22.5	103
Pork	1,888.5	2,012.9	1,803.2	95	90	4,031.9	3,816.1	95
Lamb & Mutton	14.5	*12.8	12.2	84	96	28.7	25.0	87
Total Red Meat <sup>3</sup>	3,923.3	4,123.8	3,780.7	96	92	8,291.4	7,904.5	95

\* Revised.

<sup>1</sup> Based on packers' dressed weights and excludes farm slaughter.

<sup>2</sup> Accumulated totals and percentages based on unrounded data.

<sup>3</sup> Totals may not equal sum of the parts due to rounding.

**Livestock Slaughter: Number and Average Weights, United States<sup>1</sup>**

Species	Unit	Feb 2008	Jan 2009	Feb 2009	Feb 09 % of		Jan - Feb <sup>2</sup>		
					Feb 2008	Jan 2009	2008	2009	09 % of 08
					<i>Percent</i>	<i>Percent</i>			<i>Prct</i>
<b>Cattle No.</b>									
Fed. Insp.	Thou	2,597.9	2,668.1	2,478.8	95	93	5,445.4	5,146.9	95
Other	Thou	44.8	50.3	48.5	108	96	96.7	98.8	102
Comm'l. <sup>3</sup>	Thou	2,642.7	2,718.4	2,527.3	96	93	5,542.1	5,245.7	95
<b>Live Wt/Hd</b>									
Fed. Insp.	Lbs	1,287	1,309	1,314	102	100	1,291	1,311	102
Other	Lbs	1,147	1,141	1,131	99	99	1,145	1,136	99
Comm'l.	Lbs	1,285	1,306	1,310	102	100	1,288	1,308	102
<b>Calves No.</b>									
Fed. Insp.	Thou	67.9	83.6	73.0	108	87	138.3	156.7	113
Other	Thou	1.3	1.1	1.1	87	102	2.4	2.2	93
Comm'l. <sup>3</sup>	Thou	69.1	84.7	74.1	107	88	140.6	158.8	113
<b>Live Wt/Hd</b>									
Fed. Insp.	Lbs	270	243	255	94	105	269	249	93
Other	Lbs	390	404	401	103	99	401	402	100
Comm'l.	Lbs	272	245	257	94	105	271	251	93
<b>Hogs No.</b>									
Fed. Insp.	Thou	9,297.4	9,845.8	8,839.5	95	90	19,771.7	18,685.3	95
Other	Thou	80.0	76.5	73.7	92	96	168.4	150.2	89
Comm'l. <sup>3</sup>	Thou	9,377.4	9,922.3	8,913.2	95	90	19,940.1	18,835.5	94
<b>Live Wt/Hd</b>									
Fed. Insp.	Lbs	271	272	272	100	100	272	272	100
Other	Lbs	246	239	242	99	101	245	241	98
Comm'l.	Lbs	271	272	272	100	100	272	272	100
<b>Sheep&amp;Lambs No.</b>									
Fed. Insp.	Thou	201.6	178.5	169.1	84	95	403.2	347.5	86
Other	Thou	10.0	11.0	11.0	110	100	21.6	22.1	102
Comm'l. <sup>3</sup>	Thou	211.6	189.5	180.1	85	95	424.8	369.6	87
<b>Live Wt/Hd</b>									
Fed. Insp.	Lbs	144	143	145	100	101	143	144	101
Other	Lbs	102	101	102	99	101	97	101	105
Comm'l.	Lbs	142	141	142	100	101	140	141	101
<b>Goats No.</b>									
Fed. Insp.	Thou	44.9	47.7	44.4	99	93	94.0	92.1	98
Other	Thou	14.9	11.1	14.7	98	132	27.5	25.8	94
Comm'l. <sup>3</sup>	Thou	59.8	58.8	59.1	99	100	121.5	117.9	97
<b>Live Wt/Hd</b>									
Fed. Insp.	Lbs	61	61	62	101	101	62	62	99
Other	Lbs	69	73	69	100	94	70	71	101
Comm'l.	Lbs	63	64	64	100	100	64	64	100
<b>Bison No.</b>									
Fed. Insp.	Thou	4.9	4.4	4.2	86	95	9.7	8.6	89
Other	Thou	1.5	1.6	1.4	93	87	3.2	3.0	93
Comm'l. <sup>3</sup>	Thou	6.4	6.0	5.6	88	93	12.8	11.6	90

<sup>1</sup> Excludes slaughter on farms.

<sup>2</sup> Accumulated totals and percentages based on unrounded data.

<sup>3</sup> Totals may not equal sum of the parts due to rounding.

**Commercial Red Meat Production: By State and United States <sup>1</sup>**

State	Feb 2008	Jan 2009	Feb 2009	Feb 09 as % of <sup>2</sup>	
				Feb 2008	Jan 2009
	<i>Million Pounds</i>	<i>Million Pounds</i>	<i>Million Pounds</i>	<i>Percent</i>	<i>Percent</i>
AL	2.0	1.8	1.8	90	96
AK		0.1			
AZ	35.4	31.5	29.2	82	92
AR	5.2	5.5	5.1	99	93
CA	134.4	147.9	133.5	99	90
CO	171.2	170.4	165.1	96	97
DE-MD	3.0	3.2	3.1	105	98
FL	6.7	8.3	7.4	110	89
GA	12.5	12.0	10.3	83	86
HI	0.8	0.8	0.8	105	101
ID	18.1	20.5	17.4	96	85
IL	245.0	249.6	218.0	89	87
IN	134.9	145.9	137.2	102	94
IA	571.7	611.7	546.4	96	89
KS	406.9	417.2	396.4	97	95
KY	45.0	48.7	43.4	96	89
LA	0.7	0.5	0.5	80	110
MI	41.5	41.7	38.6	93	92
MN	203.0	217.4	199.2	98	92
MS	1.3	1.4	1.1	86	80
MO	141.5	155.8	136.0	96	87
MT	1.0	1.1	1.0	102	96
NE	568.4	584.8	541.3	95	93
NV	0.1	0.1	0.1	96	102
N ENG <sup>3</sup>	0.9	1.2	1.0	115	83
NJ	3.9	4.0	3.5	90	88
NM	0.4	0.5	0.4	83	76
NY	2.5	3.1	2.7	107	85
NC	212.9	220.2	206.2	97	94
ND	2.3	2.5	2.4	106	97
OH	24.6	25.4	23.7	96	93
OK	89.8	99.5	86.0	96	86
OR	4.4	4.5	4.3	99	95
PA	102.1	105.0	100.2	98	95
SC	21.9	20.1	19.2	87	95
SD	84.1	101.6	88.2	105	87
TN	16.8	20.8	16.7	99	80
TX	383.2	414.8	396.0	103	95
UT	43.5	41.3	39.1	90	95
VA	44.4	44.0	37.1	84	84
WA	66.0	68.0	60.3	91	89
WV	0.5	0.8	0.6	136	80
WI	112.7	113.5	103.9	92	92
WY	0.5	0.6	0.6	110	90
US	3,967.4	4,169.6	3,825.1	96	92

<sup>1</sup> Includes total beef, veal, pork, lamb, and mutton.

<sup>2</sup> Percentages based on unrounded data.

<sup>3</sup> N ENG includes CT, ME, MA, NH, RI, and VT.

**Commercial Cattle Slaughter: By State and United States,  
February 2008 and 2009 <sup>1</sup>**

State	Number Slaughtered		Total Live Weight		Average Live Weight	
	2008	2009	2008	2009	2008	2009
	<i>1,000 Head</i>	<i>1,000 Head</i>	<i>1,000 Pounds</i>	<i>1,000 Pounds</i>	<i>Pounds</i>	<i>Pounds</i>
AL	0.5	0.5	439	455	937	900
AK						
AZ	44.9	40.0	63,151	52,266	1,413	1,310
AR	0.9	0.9	964	913	1,030	976
CA	128.9	130.3	163,116	167,695	1,288	1,308
CO	201.5	185.9	261,882	253,654	1,300	1,366
DE-MD	3.2	3.4	4,240	4,450	1,314	1,305
FL						
GA		18.8		18,526		991
HI	0.8	0.9	943	1,094	1,131	1,160
ID	23.2	23.4	28,933	29,627	1,273	1,289
IL						
IN	3.0	3.6	3,199	3,756	1,052	1,057
IA						
KS	500.8	469.5	630,207	610,797	1,259	1,301
KY	1.6	2.0	1,510	1,872	951	918
LA	0.5	0.6	438	465	819	762
MI	47.2	44.7	65,581	61,737	1,396	1,393
MN	63.1	67.3	90,121	94,623	1,439	1,415
MS	0.1	0.1	85	47	880	752
MO	7.6	8.4	9,082	10,144	1,203	1,215
MT	1.2	1.3	1,473	1,535	1,259	1,201
NE	541.2	498.1	719,554	682,011	1,332	1,371
NV	0.1	0.2	148	143	1,124	950
N ENG <sup>2</sup>	0.9	1.1	1,041	1,141	1,113	1,066
NJ	2.5	2.5	3,003	2,814	1,225	1,147
NM	0.5	0.5	497	467	1,073	1,029
NY	2.0	2.3	2,424	2,803	1,212	1,211
NC	17.9	17.3	20,654	19,786	1,160	1,150
ND	1.2	1.3	1,455	1,536	1,228	1,206
OH	9.3	9.3	10,959	11,120	1,190	1,201
OK	2.2	2.6	2,486	2,888	1,118	1,128
OR	2.5	2.9	2,991	3,482	1,233	1,247
PA	73.7	74.1	93,584	94,235	1,279	1,286
SC	12.9	11.5	14,353	12,821	1,121	1,124
SD						
TN	2.3	2.8	2,035	2,404	920	886
TX	499.2	506.7	611,919	637,428	1,229	1,262
UT	54.6		70,022		1,285	
VA	1.1	1.0	1,111	1,014	1,057	1,022
WA	83.3	76.7	107,596	99,609	1,298	1,304
WV	0.7	0.9	712	927	1,040	1,062
WI	132.2	127.0	177,991	168,647	1,362	1,343
WY	0.6	0.7	709	826	1,219	1,122
US <sup>3</sup>	2,642.7	2,527.3	3,382,701	3,299,293	1,285	1,310

<sup>1</sup> Includes slaughter under Federal inspection and other Commercial slaughter, excludes farm slaughter.

<sup>2</sup> N ENG includes CT, ME, MA, NH, RI, and VT.

<sup>3</sup> States with no data printed are still included in the US total, data not printed to avoid disclosing individual operations. Accumulated totals and percentages based on unrounded data.



**Commercial Calf Slaughter: By State and United States,  
February 2008 and 2009 <sup>1</sup>**

State	Number Slaughtered		Total Live Weight		Average Live Weight	
	2008	2009	2008	2009	2008	2009
	<i>1,000 Head</i>	<i>1,000 Head</i>	<i>1,000 Pounds</i>	<i>1,000 Pounds</i>	<i>Pounds</i>	<i>Pounds</i>
AL						
AK						
AZ						
AR						
CA	15.6	19.6	1,793	2,183	116	113
CO						
DE-MD	0.2	0.2	43	52	268	267
FL	0.1		20		390	
GA	0.1	0.1	40	31	450	450
HI						
ID						
IL	2.6	4.9	1,092	1,615	428	352
IN						
IA	0.1		23		331	
KS						
KY						
LA	0.3	0.3	160	164	512	517
MI	1.6	1.5	630	664	399	436
MN						
MS						
MO		0.1		22		367
MT						
NE						
NV						
N ENG <sup>2</sup>	0.2	2.1	67	212	333	106
NJ	5.5	5.1	2,289	2,129	413	421
NM	0.7		63		87	
NY	14.2	14.1	1,406	1,498	103	109
NC	0.1	0.2	57	79	486	514
ND						
OH	0.1	4.2	27	1,967	350	470
OK						
OR						
PA	13.9	10.3	5,561	4,389	401	428
SC						
SD						
TN	0.1	0.1	31	36	397	460
TX	1.8	3.0	883	581	492	198
UT						
VA						
WA						
WV						
WI						
WY						
US <sup>3</sup>	69.1	74.1	18,616	18,749	272	257

<sup>1</sup> Includes slaughter under Federal inspection and other Commercial slaughter, excludes farm slaughter.

<sup>2</sup> N ENG includes CT, ME, MA, NH, RI, and VT.

<sup>3</sup> States with no data printed are still included in the US total, data not printed to avoid disclosing individual operations. Accumulated totals and percentages based on unrounded data.

**Commercial Hog Slaughter: By State and United States,  
February 2008 and 2009 <sup>1</sup>**

State	Number Slaughtered		Total Live Weight		Average Live Weight	
	2008	2009	2008	2009	2008	2009
	<i>1,000 Head</i>	<i>1,000 Head</i>	<i>1,000 Pounds</i>	<i>1,000 Pounds</i>	<i>Pounds</i>	<i>Pounds</i>
AL	6.9	6.3	3,020	2,687	437	424
AK	0.1	0.1	16	24	252	281
AZ	0.1	0.1	27	21	229	242
AR	15.3	15.6	7,078	6,931	462	444
CA	208.2	202.5	50,946	49,104	245	243
CO	0.7	0.6	177	146	245	254
DE-MD	1.5	1.6	407	431	269	270
FL	7.5	4.5	1,009	805	136	179
GA	9.9	5.3	2,237	1,421	225	266
HI	1.5	1.2	339	283	225	231
ID	12.8	10.0	3,331	2,529	261	253
IL	890.9	761.6	248,591	210,381	279	276
IN	660.1	658.8	174,902	177,422	265	269
IA	2,606.7	2,530.5	703,419	682,773	270	270
KS						
KY						
LA	1.6	0.9	381	201	238	211
MI	9.2	8.8	3,620	3,282	393	376
MN	789.3	747.1	205,771	197,805	261	265
MS	5.8	4.8	1,785	1,543	306	324
MO	652.8	627.2	180,128	172,813	276	276
MT	0.8	0.7	219	168	290	245
NE	645.7	612.2	173,311	165,373	269	270
NV						
N ENG <sup>2</sup>	1.1	1.0	235	220	217	224
NJ	8.0	5.7	804	597	100	105
NM	0.1	0.1	33	18	258	253
NY	2.0	1.6	371	311	188	200
NC	1,016.7	970.3	267,730	258,873	264	267
ND	8.4	9.0	2,189	2,293	259	256
OH	91.9	82.6	25,290	22,438	276	272
OK	417.4	399.4	116,502	111,034	279	278
OR	13.8	12.5	3,576	3,134	260	252
PA	232.2	224.1	59,206	57,748	255	258
SC						
SD	386.4	408.3	98,838	106,438	256	261
TN	48.9	49.9	23,268	22,776	476	459
TX	36.7	32.9	9,677	8,323	264	253
UT	3.3	4.2	593	831	181	197
VA	218.1	179.5	57,495	48,041	264	268
WA	2.3	1.8	418	398	184	222
WV	0.5	0.5	137	123	268	242
WI	45.8	41.7	20,426	18,051	453	440
WY	0.4	0.3	101	71	274	258
US <sup>3</sup>	9,377.4	8,913.2	2,534,860	2,418,807	271	272

<sup>1</sup> Includes slaughter under Federal inspection and other Commercial slaughter, excludes farm slaughter.

<sup>2</sup> N ENG includes CT, ME, MA, NH, RI, and VT.

<sup>3</sup> States with no data printed are still included in the US total, data not printed to avoid disclosing individual operations. Accumulated totals and percentages based on unrounded data.

**Commercial Sheep and Lamb Slaughter: By State and United States,  
February 2008 and 2009<sup>1</sup>**

State	Number Slaughtered		Total Live Weight		Average Live Weight	
	2008	2009	2008	2009	2008	2009
	<i>1,000 Head</i>	<i>1,000 Head</i>	<i>1,000 Pounds</i>	<i>1,000 Pounds</i>	<i>Pounds</i>	<i>Pounds</i>
AL						
AK						
AZ	0.1	0.1	8	7	104	102
AR						
CA						
CO	90.2	73.9	14,014	11,859	156	161
DE-MD	2.4	2.6	243	256	102	98
FL	0.1	0.2	6	12	59	56
GA	0.3	0.3	26	17	94	69
HI		0.1		8		146
ID	0.2	0.2	28	21	126	133
IL						
IN	1.7	2.1	187	230	112	112
IA	32.7	26.4	5,117	4,081	157	155
KS	0.1	0.2	13	20	110	98
KY	0.7	0.9	94	112	126	128
LA	0.4	0.3	38	23	96	77
MI	16.0	14.3	2,181	1,915	136	134
MN	1.0	1.5	129	176	132	121
MS		0.1		5		93
MO	0.3	0.3	36	41	117	121
MT	0.2	0.3	21	30	95	104
NE	0.1	0.1	10	9	145	103
NV						
N ENG <sup>2</sup>	1.3	1.8	141	165	108	93
NJ	8.4	8.2	717	690	85	84
NM	1.4	1.0	201	152	143	150
NY	2.1	2.1	175	186	82	90
NC	0.5	0.4	46	33	84	82
ND		0.1		6		122
OH	0.7	0.8	77	90	106	109
OK	0.1	0.1	6	9	101	88
OR	1.9	1.5	266	222	139	143
PA	3.6	3.2	359	325	100	102
SC		0.1		11		88
SD	0.2	0.2	17	25	114	119
TN	0.9	1.0	73	73	78	76
TX	2.8	3.5	243	314	87	89
UT	2.6	2.8	366	400	140	143
VA	0.9	1.3	92	134	99	103
WA	0.6	1.0	79	139	139	138
WV						
WI	0.6	0.6	85	77	133	137
WY	0.1	0.2	15	23	145	142
US <sup>3</sup>	211.6	180.1	30,084	25,527	142	142

<sup>1</sup> Includes slaughter under Federal inspection and other Commercial slaughter, excludes farm slaughter.

<sup>2</sup> N ENG includes CT, ME, MA, NH, RI, and VT.

<sup>3</sup> States with no data printed are still included in the US total, data not printed to avoid disclosing individual operations. Accumulated totals and percentages based on unrounded data.

**Classification of Livestock Slaughtered Under Federal Inspection:  
United States**

Item	Feb 2008	Jan 2009	Feb 2009	Jan - Feb <sup>1</sup>		Feb 2008	Jan 2009	Feb 2009	Jan - Feb <sup>1</sup>	
				2008	2009				2008	2009
	<i>1,000 Head</i>	<i>1,000 Head</i>	<i>1,000 Head</i>	<i>1,000 Head</i>	<i>1,000 Head</i>	<i>Percent of Total</i>	<i>Percent of Total</i>	<i>Percent of Total</i>	<i>Percent of Total</i>	<i>Percent of Total</i>
Class <sup>2</sup>										
Cattle										
Steers	1,274	1,281	1,190	2,665	2,471	49.0	48.0	48.0	48.9	48.0
Heifers	818	781	763	1,685	1,544	31.5	29.3	30.8	31.0	30.0
All Cows	465	566	487	1,010	1,053	17.9	21.2	19.6	18.5	20.5
Dairy Cows	214	281	244	450	525	8.2	10.5	9.8	8.3	10.2
Other Cows	251	285	243	560	529	9.7	10.7	9.8	10.3	10.3
Bulls	40	40	39	85	79	1.6	1.5	1.6	1.6	1.5
Total <sup>1</sup>	2,598	2,668	2,479	5,445	5,147	100.0	100.0	100.0	100.0	100.0
Calves & Vealers	68	84	73	138	157	100.0	100.0	100.0	100.0	100.0
Hogs										
Barrow & Gilts	8,992	9,544	8,569	19,120	18,113	96.7	96.9	96.9	96.7	96.9
Sows	270	267	238	574	505	2.9	2.7	2.7	2.9	2.7
Boars	35	35	33	78	68	0.4	0.4	0.4	0.4	0.4
Total <sup>1</sup>	9,297	9,846	8,839	19,772	18,685	100.0	100.0	100.0	100.0	100.0
Sheep										
Mature Sheep	9	8	8	18	17	4.3	4.7	4.9	4.4	4.8
Lambs & Yrlngs	193	170	161	386	331	95.7	95.3	95.1	95.6	95.2
Total <sup>1</sup>	202	178	169	403	348	100.0	100.0	100.0	100.0	100.0
Average Dressed Weight										
	<i>Pounds</i>	<i>Pounds</i>	<i>Pounds</i>	<i>Pounds</i>	<i>Pounds</i>					
Cattle										
Steers <sup>3</sup>	776	785	791	776	788					
Heifers <sup>3</sup>	827	853	853	830	853					
All Cows <sup>3</sup>	773	790	796	773	793					
Bulls <sup>3</sup>	631	614	625	627	619					
Bulls <sup>3</sup>	885	874	874	881	874					
Calves & Vealers	160	142	150	159	146					
Hogs										
Barrow Gilts <sup>4</sup>	203	205	204	204	204					
Sows <sup>4</sup>	200	202	202	201	202					
Boars <sup>4</sup>	308	303	300	307	301					
Boars <sup>4</sup>	213	202	196	213	199					
Sheep										
Mature Sheep <sup>5</sup>	72	72	72	71	72					
Lamb & Yrlngs <sup>5</sup>	67	65	68	67	67					
Lamb & Yrlngs <sup>5</sup>	72	72	72	71	72					

<sup>1</sup> Total and percentages based on unrounded data.

<sup>2</sup> Species totals and classification reported by food inspectors, Inspection Operations, FSIS.

<sup>3</sup> Included in cattle average dressed weight.

<sup>4</sup> Included in hog average dressed weight.

<sup>5</sup> Included in sheep average dressed weight.

**Federally Inspected Slaughter: By Region and United States,  
February 2009<sup>1</sup>**

Standard Federal Regions	Cattle							Calves
	Total <sup>2</sup>	Steers	Heifers	Cows			Bulls	Total
				All	Dairy	Other		
	<i>1,000 Head</i>	<i>1,000 Head</i>	<i>1,000 Head</i>	<i>1,000 Head</i>	<i>1,000 Head</i>	<i>1,000 Head</i>	<i>1,000 Head</i>	<i>1,000 Head</i>
1	0.9	0.4						2.0
2	4.7	1.5	0.3	2.5	2.2	0.3	0.3	19.2
3	76.2	28.6	6.2	40.3	32.4	8.0	1.1	10.5
4	61.8	1.6	0.5	51.5	13.3	38.2	8.2	0.3
5	308.2	123.6	43.9	134.0	73.6	60.4	6.7	17.6
6	504.8	255.5	154.9	84.6	20.6	64.0	9.7	2.9
7	1,005.1	543.3	404.3	51.1	1.7	49.4	6.4	
8	244.5	118.8	109.0					
9	170.7	81.5	10.3	76.9	71.3	5.5	2.1	19.4
10	101.9	35.2	33.5	30.7	21.9	8.7	2.6	
US <sup>2</sup>	2,478.8	1,190.0	763.1	486.9	243.5	243.4	38.8	73.0
	Hogs				Sheep			
	Total <sup>2</sup>	Barrows & Gilts	Sows	Boars	Total <sup>2</sup>	Mature Sheep	Lambs & Yearlings	
	<i>1,000 Head</i>	<i>1,000 Head</i>	<i>1,000 Head</i>	<i>1,000 Head</i>	<i>1,000 Head</i>	<i>1,000 Head</i>	<i>1,000 Head</i>	<i>1,000 Head</i>
1	0.8	0.7			1.7	0.2	1.5	
2	7.1	6.9	0.1	0.1	9.8	1.1	8.7	
3	403.3	393.2	1.2	8.9	7.5	0.3	7.2	
4	1,294.5	1,224.5	68.5	1.5	2.7	0.8	1.8	
5	2,270.5	2,172.6	94.5	3.5	22.0	2.6	19.4	
6	440.8	419.6	21.0	0.2				
7	3,781.3	3,710.5	52.0	18.8	26.8	0.2	26.5	
8	419.7	419.3	0.3		76.3	1.7	74.6	
9	198.0	198.0						
10	23.6	23.5	0.1		1.7	0.1	1.5	
US <sup>2</sup>	8,839.5	8,568.8	237.8	32.9	169.1	8.3	160.8	

<sup>1</sup> States included in regions are as follows: 1- CT, ME, NH, VT, MA, & RI; 2- NY & NJ; 3- DE-MD, PA, WV, & VA; 4- AL, FL, GA, KY, MS, NC, SC, & TN; 5- IL, IN, MI, MN, OH, & WI; 6- AR, LA, NM, OK, & TX; 7- IA, KS, MO, & NE; 8- CO, MT, ND, SD, UT, & WY; 9- AZ, CA, HI & NV; 10- AK, ID, OR, & WA.

<sup>2</sup> Regions with no data printed are still included in the US and Region total, data not printed to avoid disclosing individual operations. Totals may not add due to rounding.

**Federally Inspected Slaughter: By Region and United States,  
January - February 2009<sup>1</sup>**

Standard Federal Regions	Cattle							Calves
	Total <sup>2</sup>	Steers	Heifers	Cows			Bulls	Total
				All	Dairy	Other		
	<i>1,000 Head</i>	<i>1,000 Head</i>	<i>1,000 Head</i>	<i>1,000 Head</i>	<i>1,000 Head</i>	<i>1,000 Head</i>	<i>1,000 Head</i>	<i>1,000 Head</i>
1	2.0	0.9						2.4
2	9.8	3.3	0.6	5.3	4.5	0.8	0.7	43.5
3	155.5	59.8	13.6	80.1	64.0	16.1	2.0	22.4
4	131.4	3.1	1.1	110.7	29.0	81.7	16.4	0.7
5	646.1	257.3	86.8	287.6	155.6	131.9	14.4	36.4
6	1,037.6	520.4	311.9	184.7	53.5	131.2	20.6	6.6
7	2,082.3	1,129.8	826.8	113.9	3.9	110.0	11.8	
8	501.6	248.7	216.6					
9	360.6	165.8	21.5	169.0	156.2	12.8	4.4	42.9
10	219.9	81.6	65.0	68.4	44.2	24.1	4.9	
US <sup>2</sup>	5,146.9	2,470.7	1,544.2	1,053.2	524.6	528.6	78.8	156.7
	Hogs				Sheep			
	Total <sup>2</sup>	Barrows & Gilts	Sows	Boars	Total <sup>2</sup>	Mature Sheep	Lambs & Yearlings	
	<i>1,000 Head</i>	<i>1,000 Head</i>	<i>1,000 Head</i>	<i>1,000 Head</i>	<i>1,000 Head</i>	<i>1,000 Head</i>	<i>1,000 Head</i>	
1	1.8	1.8			4.0	0.4	3.6	
2	18.8	18.4	0.2	0.2	20.0	2.2	17.8	
3	852.6	832.9	2.6	17.1	15.2	0.6	14.6	
4	2,697.1	2,542.5	151.0	3.7	5.6	1.6	3.9	
5	4,783.9	4,577.8	199.2	6.9	45.2	5.2	40.0	
6	956.2	909.9	45.4	0.8				
7	8,004.7	7,860.2	105.5	39.0	56.1	0.5	55.6	
8	898.0	897.3	0.6		156.1	3.4	152.6	
9	423.8	423.6	0.1					
10	48.5	48.3	0.2		3.3	0.3	3.0	
US <sup>2</sup>	18,685.3	18,112.7	504.8	67.8	347.5	16.7	330.8	

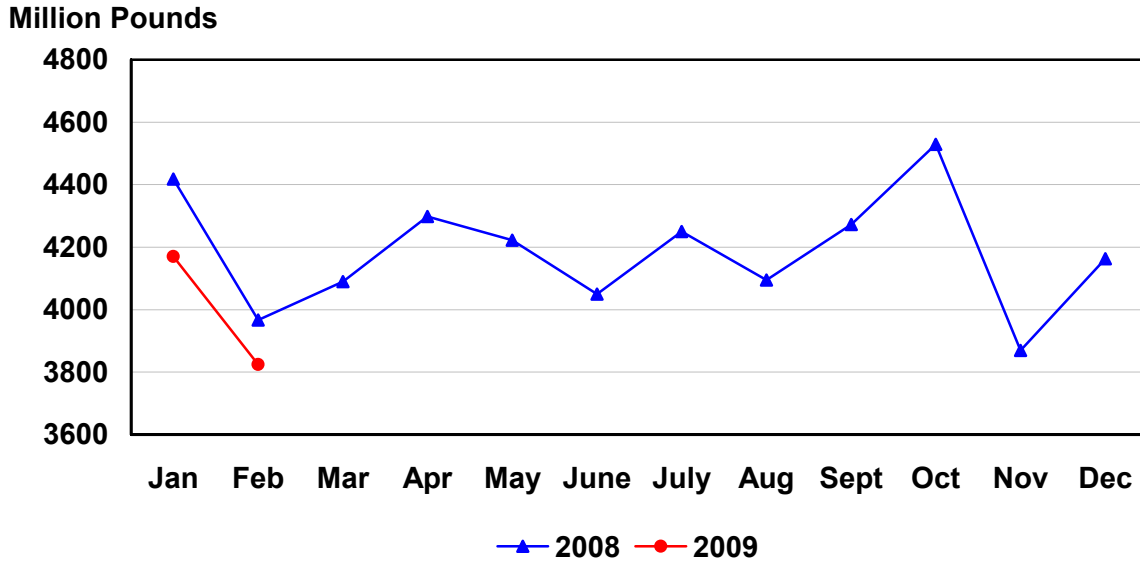
<sup>1</sup> States included in regions are as follows: 1- CT, ME, NH, VT, MA, & RI; 2- NY & NJ; 3- DE-MD, PA, WV, & VA; 4- AL, FL, GA, KY, MS, NC, SC, & TN; 5- IL, IN, MI, MN, OH, & WI; 6- AR, LA, NM, OK, & TX; 7- IA, KS, MO, & NE; 8- CO, MT, ND, SD, UT, & WY; 9- AZ, CA, HI & NV; 10- AK, ID, OR, & WA.

<sup>2</sup> Regions with no data printed are still included in the US and Region total, data not printed to avoid disclosing individual operations. Totals may not add due to rounding.

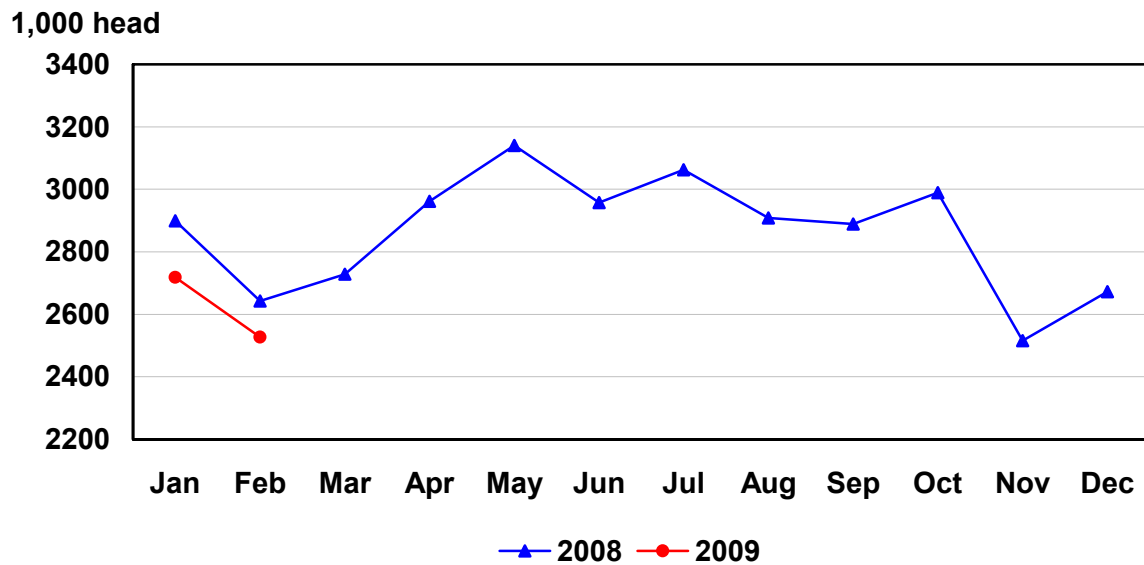
**Federally Inspected Slaughter: Percent of Total Commercial Slaughter by Species, United States**

Species	Feb 2008	Jan 2009	Feb 2009	Jan - Feb	
				2008	2009
	<i>Percent</i>	<i>Percent</i>	<i>Percent</i>	<i>Percent</i>	<i>Percent</i>
Cattle	98.3	98.1	98.1	98.3	98.1
Calves	98.2	98.7	98.5	98.3	98.6
Hogs	99.1	99.2	99.2	99.2	99.2
Sheep	95.3	94.2	93.9	94.9	94.0

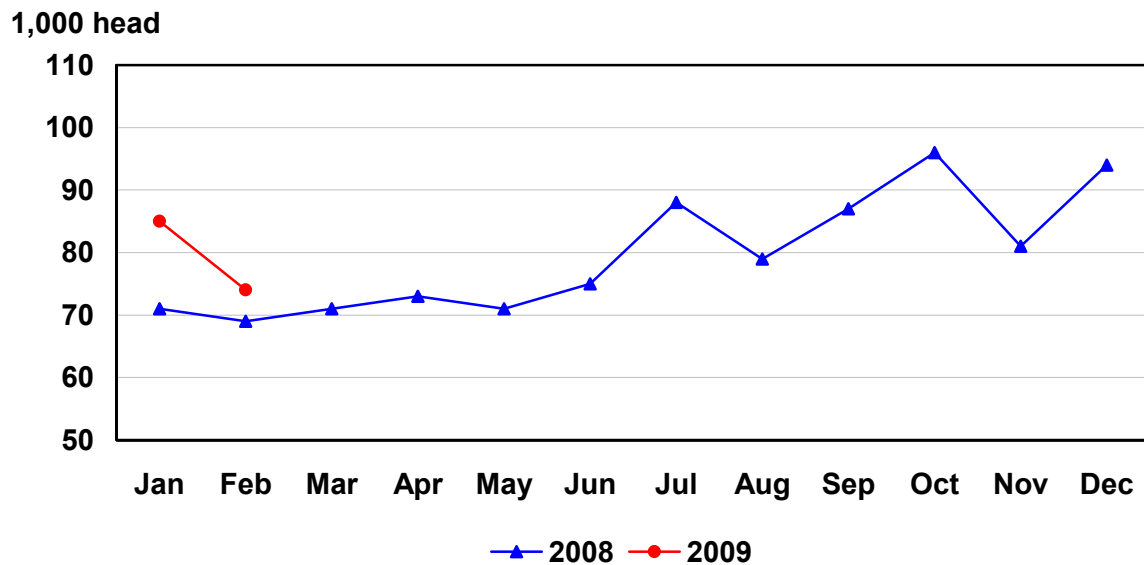
## U.S. Monthly Commercial Red Meat Production



# U.S. Monthly Commercial Slaughter Cattle

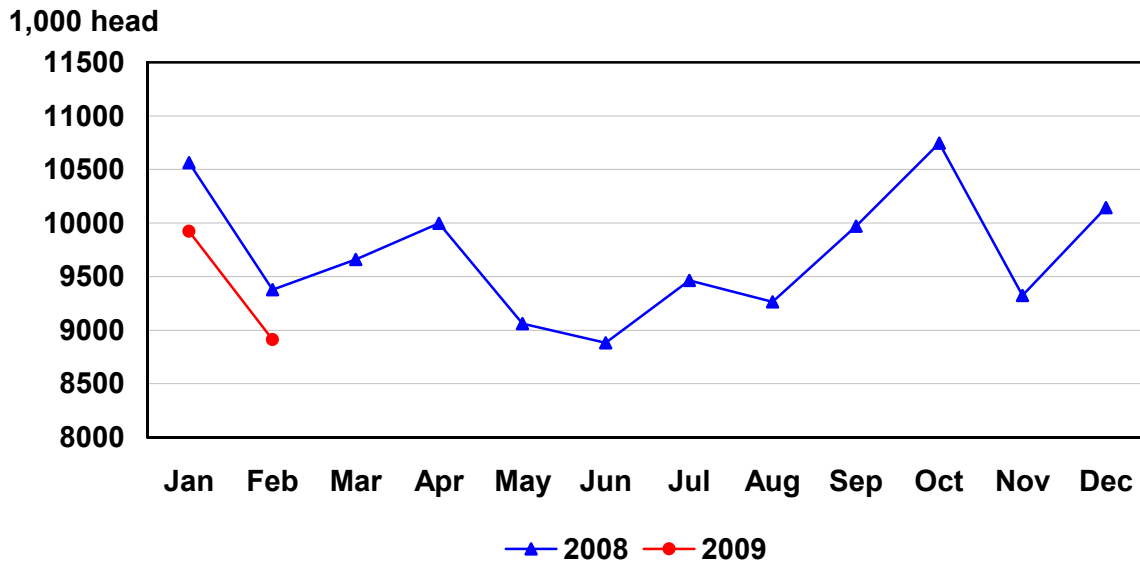


# U.S. Monthly Commercial Slaughter Calves

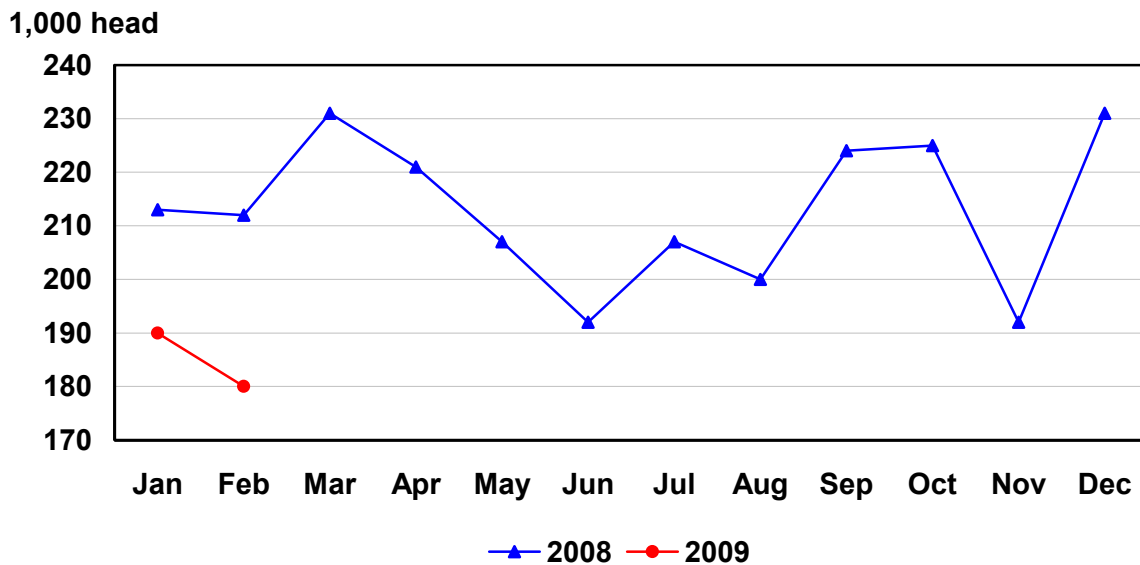




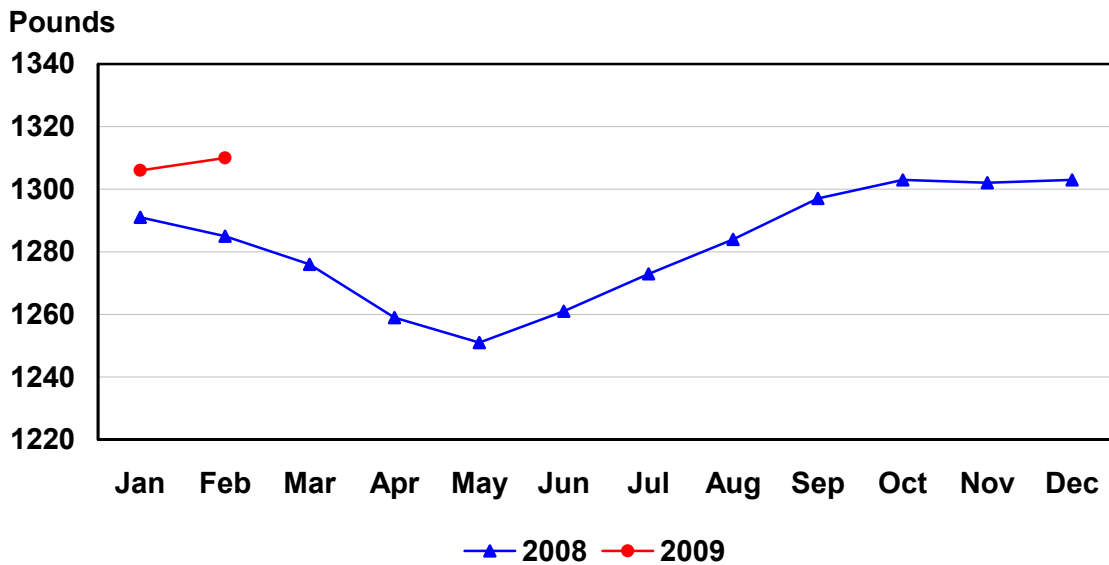
# U.S. Monthly Commercial Slaughter Hogs



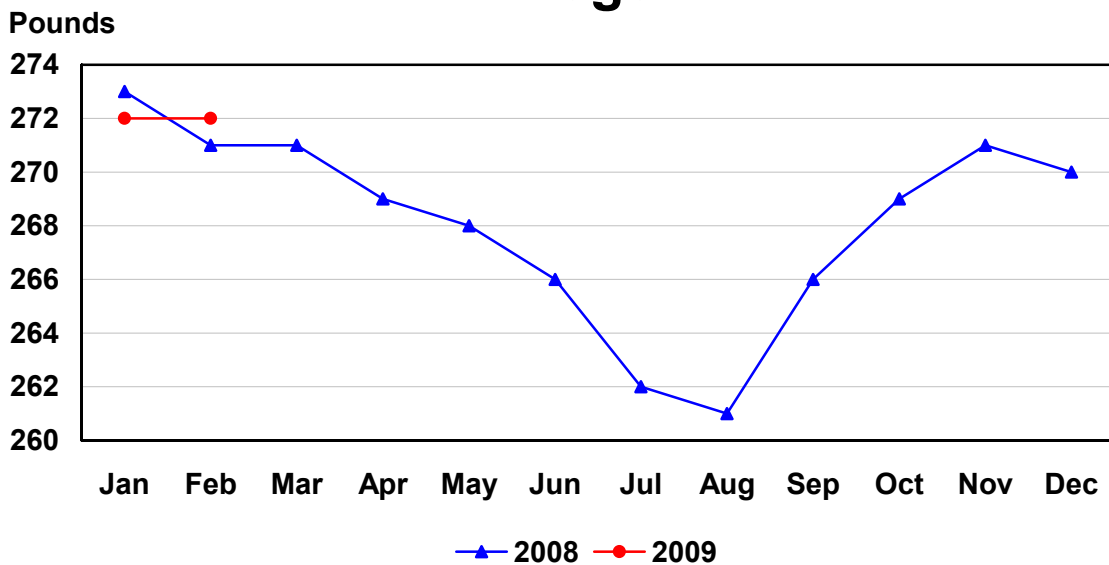
# U.S. Monthly Commercial Slaughter Sheep



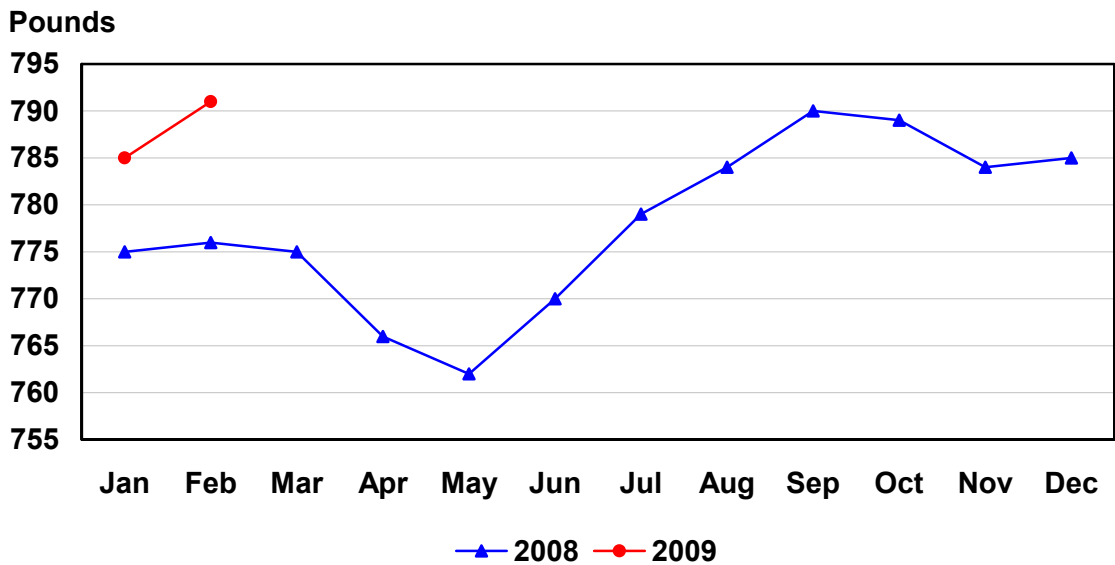
# U.S. Monthly Commercial Slaughter Average Live Weight Cattle



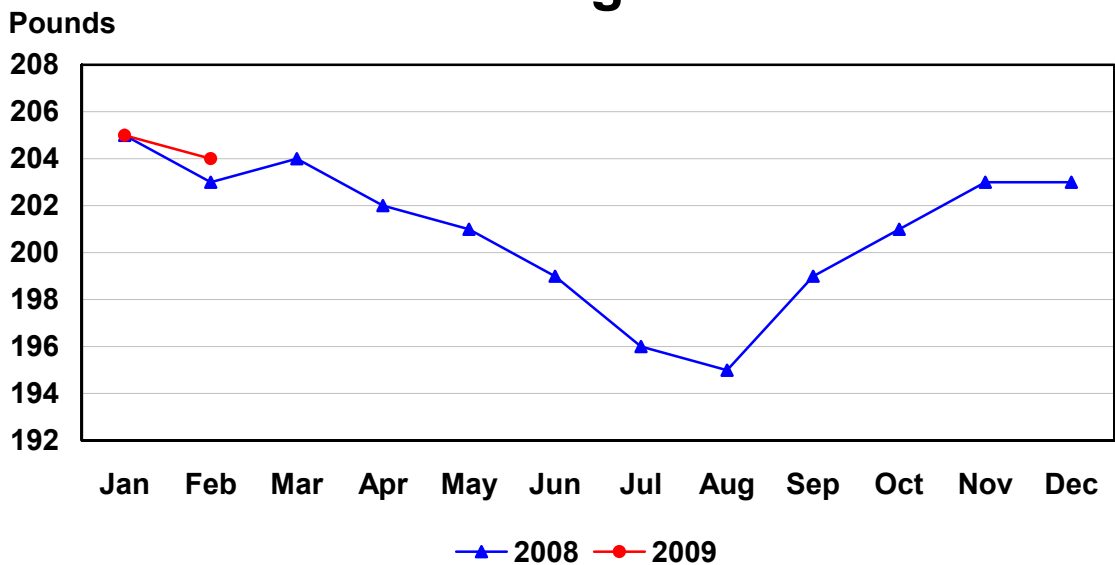
# U.S. Monthly Commercial Slaughter Average Live Weight Hogs



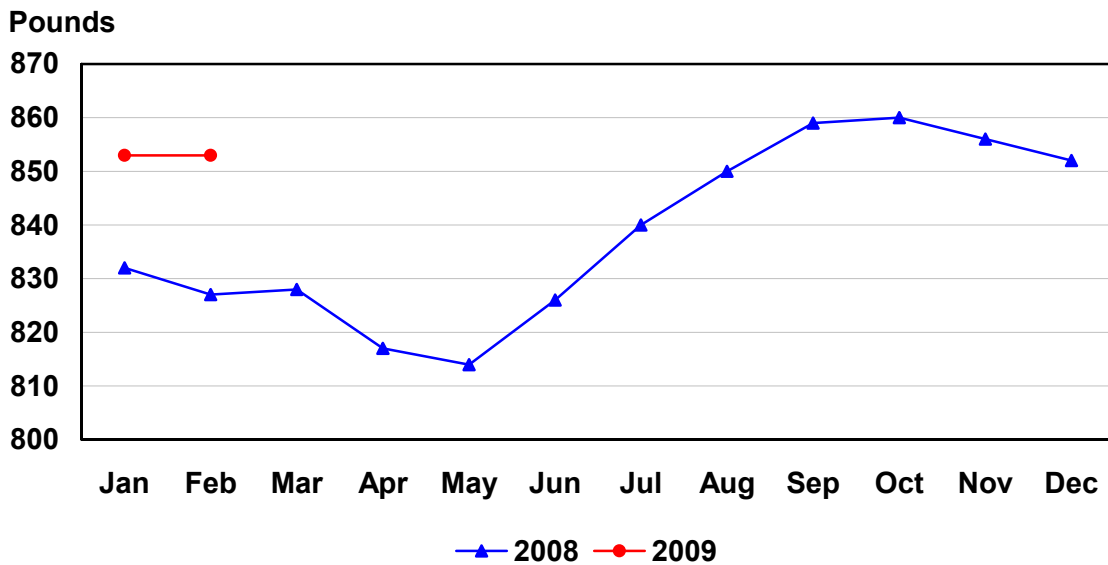
# U.S. Monthly Federally Inspected Average Dressed Weight Cattle



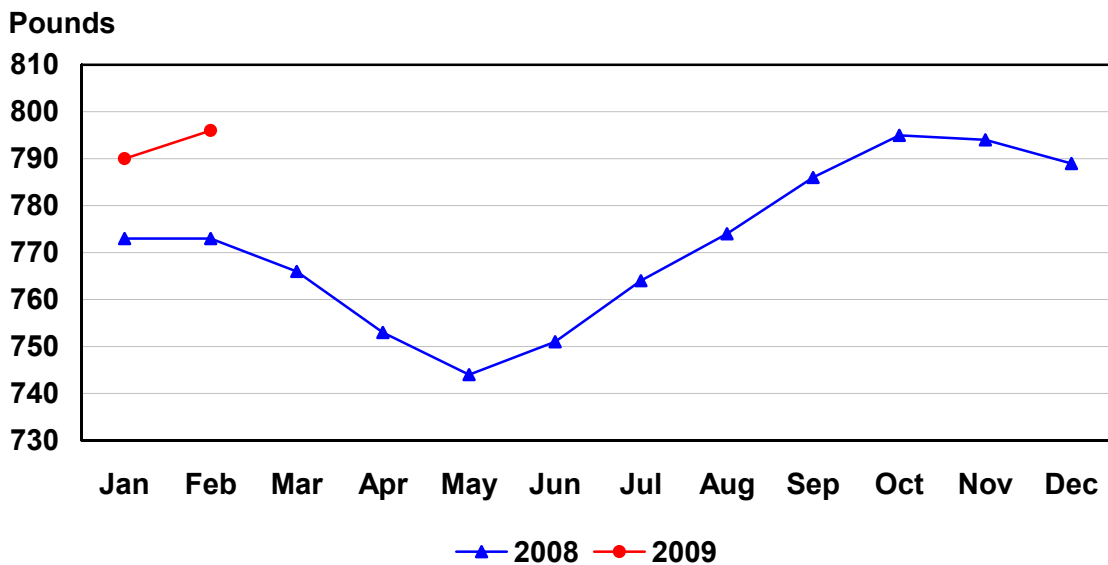
# U.S. Monthly Federally Inspected Average Dressed Weight Hogs



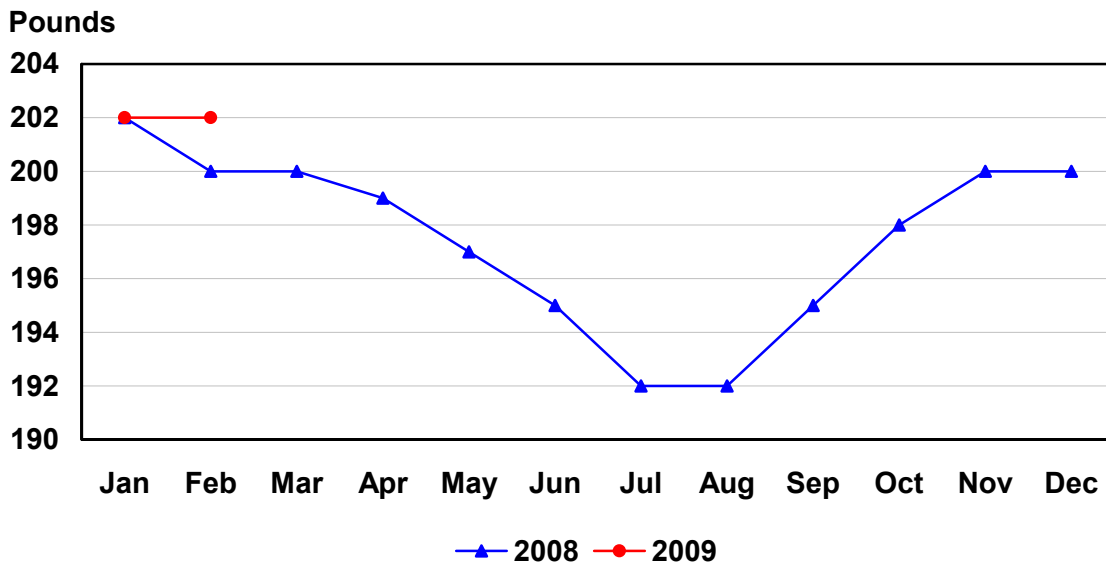
# U.S. Monthly Federally Inspected Average Dressed Weight Steers



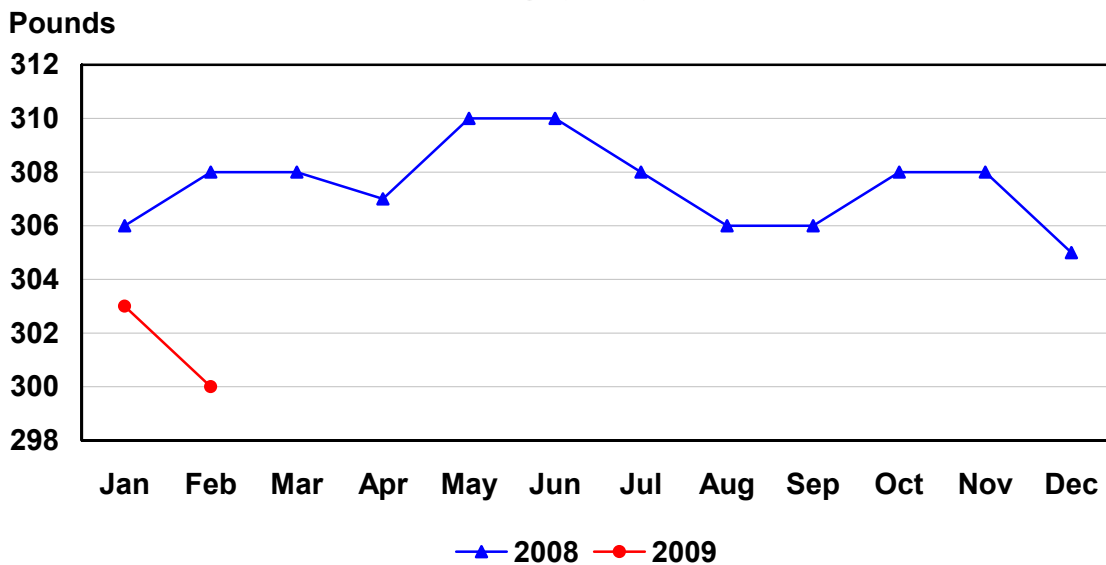
# U.S. Monthly Federally Inspected Average Dressed Weight Heifers



## U.S. Monthly Federally Inspected Average Dressed Weight Barrows and Gilts



## U.S. Monthly Federally Inspected Average Dressed Weight Sows



## Reliability of Livestock Slaughter Estimates

**Data Sources:** Primary data for the commercial livestock slaughter estimates are obtained from electronic reports completed by inspectors from the Food Safety and Inspection Service (FSIS), USDA, which provide daily counts of animals slaughtered in Federally Inspected (FI) plants, in addition to total live and dressed weights. These counts are combined with data from State-administered Non-Federally Inspected (NFI) slaughter plants to derive total commercial slaughter estimates. More than 95 percent of the total U.S. slaughter for any species is under Federal Inspection.

There are nearly 800 livestock slaughter plants in the U.S. operating under Federal Inspection and over 2,000 Non-Federally Inspected (State-inspected or custom-exempt) slaughter plants. Slaughter from State-inspected Talmedge-Aiken plants is included in FI totals (see Types of Plants, page 18). To prevent duplication in reporting between FI and NFI plants and assure all FI plants are included, certificates prepared by FSIS identifying operating status are constantly monitored

**Revision Policy:** Number of head slaughtered, live weights, and dressed weights are subject to revision the following month after the monthly release. Annual totals are published in the slaughter summary each March which includes any revisions made to current and previous year's published data. Revisions are generally the result of late reports received from slaughter plants and are usually less than one-half of one percent. No revisions will be made to the previous year's data after the publication of the annual summary in March.

**Procedures and Reliability:** The livestock slaughter data is obtained electronically on a daily basis and summarized approximately two weeks after the week of slaughter. An edit compares each plant's data with the historical data for that plant. Data are checked for unusual values for head kill, patterns of kill, average weights, and dressing percent, based on each plant's past operating profile. In addition, the edit provides a listing of missing reports for follow-up contact with FSIS. Average live and dressed weights and dressing percentages by State are compared with the previous weeks as an additional check. Fluctuations are frequently the result of plants permanently or temporarily closing and a shift in the species reported.

The FSIS District Veterinary Medical Specialists (DVMS) are contacted by e-mail or telephone for missing or potentially erroneous slaughter data. This assures that plants slaughtering a large number of head or several species are accounted for each week. Any corrections FSIS makes to the slaughter data are included in the summary.

Imputation may be necessary for incomplete reports. The imputation of live and dressed weights is based on the current week reported data of plants of similar size and location. Imputation for live and dressed weight data for cattle and hogs is less than 10 percent and 7 percent, respectively. The imputation for calves and sheep is more frequent and variable. If no data is received electronically or by other means, for plants slaughtering fewer than 50 total head weekly of only one species, data are imputed. The imputation of head for any plant is based on the historical data for that particular plant. The imputation of head slaughtered is rare but when necessary, the imputed head kill for missing plants usually is less than 1 percent of the U.S. head kill totals.

FI data are summarized weekly and accumulated to a monthly total for this release. These weekly totals are published by USDA's Agricultural Marketing Service (AMS) in **Livestock, Meat, Wool Market News**, Weekly Summary, and Statistics and are also available on the NASS website. NFI data are summarized monthly only.

Livestock slaughter estimates are based on a census of operating plants and therefore, have no sampling error. However, they may be subject to errors such as omissions, duplications and mistakes in reporting, recording and processing the data. These errors are minimized through rigid quality controls in the edit and summarization process, and a careful review of all reported data for consistency and reasonableness.

No data are published when an individual plant's data could be divulged. If not published, these data are still included in US and region totals. A review of the data is made annually to determine the publishable data.

### **Types of Livestock Slaughter Plants**

There are generally **four types** of slaughtering plants.

- (1) **Federally Inspected (FI) Plants:** Plants that transport meat interstate must employ federal inspectors to assure compliance with USDA standards. Any State whose commercial plants operate entirely under federal inspection may still have custom-exempt establishments for which NFI estimates are made.
- (2) **Talmedge-Aiken (TA) Plants:** Slaughter plants in which USDA is responsible for inspection. However, federal inspection is carried out by State employees. These plants are considered to be federally inspected.
- (3) **Non-Federally Inspected (NFI) Plants:** Plants which sell and transport only intrastate. State inspectors assure compliance with individual State standards for these NFI plants. Mobile slaughtering units are excluded and are considered farm slaughter.
- (4) **Custom-Exempt Plants:** Plants that do not sell meat but operate on a custom basis only are custom-exempt. The animals and meat are not inspected, but the facilities must meet health standards. These are considered NFI plants and head kill is included in NFI totals.

## Terms and Definitions Used for Livestock Slaughter Estimates

**Average Live Weight:** Excludes post-mortem condemnations

**Commercial Production:** Includes slaughter and meat production in federally inspected and other plants, but excludes animals slaughtered on farms.

**Dressed Weight:** The weight of a chilled animal carcass. Beef with kidney knob in; veal with hide off; lamb and mutton with pluck out; pork with leaf fat and kidneys out, jowls on and head off.

**Dressing Percent:** Usually expressed as a percentage yield of chilled carcass in relation to the weight of the live animal on hoof. For example, a live hog that weighed 200 pounds on hoof and yielded a carcass weighing 140 pounds would have a dressing percentage of 70.

**Food and Meat Inspection:** Includes examination, checking, or testing of a carcass and/or meat against established government standards and involves checking the facility for cleanliness, health of animals, or parts of animals and quality of the meat produced.

**Number of Head:** Includes post-mortem condemnations.

**Plant, Slaughter:** An establishment where animals are killed and butchered.

**Red Meat:** Red meat production is the carcass weight after slaughter excluding condemnation and is comprised of beef, veal, pork, and lamb and mutton. The FI red meat production is equal to the total carcass weight after slaughter. The NFI meat production formula is (NFI head kill) X (live weight) X (FI dressing percentage) = NFI red meat production.

**Slaughter:** Killing and butchering of animals primarily for food.

**Slaughter, Farm:** Animals slaughtered on farms primarily for home consumption. Excludes custom slaughter for farmers at commercial establishments, but includes mobile slaughtering on farms. These estimates appear only in the annual slaughter release.

**Total Live Weight:** Excludes post-mortem condemnations.

**Wholesome Meat Act:** Legislation that specifies that all meat produced for sale in the U.S. must be inspected. Meat that is transported interstate must be inspected in compliance with Federal (USDA) Standards.

### Information Contacts

Listed below are the commodity specialists in the Livestock Branch of the National Agricultural Statistics Service to contact for additional information.

Dan Kerestes, Chief, Livestock Branch.....	(202) 720-3570
Scott Hollis, Head, Livestock Section.....	(202) 690-2424
Jim Collom – Dairy Products.....	(202) 690-3236
Joe Gaynor – Dairy Products Prices.....	(202) 690-2168
Jason Hardegree – Cattle, Cattle on Feed.....	(202) 720-3040
Sherry Bertramsen – Livestock Slaughter.....	(515) 284-4340
Mike Miller – Milk Production and Milk Cows.....	(202) 720-3278
Everett Olbert – Sheep and Goats.....	(202) 720-4751
Nicholas Streff – Hogs and Pigs.....	(202) 720-3106



## ACCESS TO REPORTS!!

---

For your convenience, there are several ways to obtain NASS reports, data products, and services:

### INTERNET ACCESS

All NASS reports are available free of charge on the worldwide Internet. For access, connect to the Internet and go to the NASS Home Page at: [www.nass.usda.gov](http://www.nass.usda.gov).

### E-MAIL SUBSCRIPTION

All NASS reports are available by subscription free of charge direct to your e-mail address. Starting with the NASS Home Page at [www.nass.usda.gov](http://www.nass.usda.gov), under the right navigation, *Receive reports by Email*, click on **National** or **State**. Follow the instructions on the screen.

-----

### PRINTED REPORTS OR DATA PRODUCTS

**CALL OUR TOLL-FREE ORDER DESK: 800-999-6779 (U.S. and Canada)**  
**Other areas, please call 703-605-6220      FAX: 703-605-6900**  
**(Visa, MasterCard, check, or money order acceptable for payment.)**

-----

### ASSISTANCE

For **assistance** with general agricultural statistics or further information about NASS or its products or services, contact the **Agricultural Statistics Hotline** at **800-727-9540**, 7:30 a.m. to 4:00 p.m. ET, or e-mail: [nass@nass.usda.gov](mailto:nass@nass.usda.gov).

The U.S. Department of Agriculture (USDA) prohibits discrimination in all its programs and activities on the basis of race, color, national origin, age, disability, and where applicable, sex, marital status, familial status, parental status, religion, sexual orientation, genetic information, political beliefs, reprisal, or because all or part of an individual's income is derived from any public assistance program. (Not all prohibited bases apply to all programs.) Persons with disabilities who require alternative means for communication of program information (Braille, large print, audiotape, etc.) should contact USDA's TARGET Center at (202) 720-2600 (voice and TDD).

To file a complaint of discrimination, write to USDA, Director, Office of Civil Rights, 1400 Independence Avenue, S.W., Washington, D.C. 20250-9410, or call (800) 795-3272 (voice) or (202) 720-6382 (TDD). USDA is an equal opportunity provider and employer.