

---

Released April 24, 2009, by the National Agricultural Statistics Service (NASS), Agricultural Statistics Board, U.S. Department of Agriculture. For information on *Livestock Slaughter* call Sherry Bertramsen at (515) 284-4340, office hours 7:00 a.m. to 4:00 p.m. CT.

## March Pork Production at Record High

**Commercial red meat production** for the United States totaled 4.14 billion pounds in March, up 1 percent from the 4.09 billion pounds produced in March 2008.

**Beef production**, at 2.14 billion pounds, was 2 percent above the previous year. Cattle slaughter totaled 2.73 million head, up slightly from March 2008. The average live weight was up 29 pounds from the previous year, at 1,305 pounds.

**Veal production** totaled 12.2 million pounds, 8 percent above March a year ago. Calf slaughter totaled 79,800 head, up 12 percent from March 2008. The average live weight was down 10 pounds from last year, at 263 pounds.

**Pork production** totaled 1.97 billion pounds, up slightly from the previous year. Hog kill totaled 9.65 million head, down slightly from March 2008. The average live weight was up 1 pound from the previous year, at 272 pounds.

**Lamb and mutton production**, at 15.9 million pounds, was down slightly from March 2008. Sheep slaughter totaled 222,000 head, 4 percent below last year. The average live weight was 143 pounds, up 4 pounds from March a year ago.

**January to March 2009 commercial red meat production** was 12.1 billion pounds, down 3 percent from 2008. Accumulated beef production was down 2 percent from last year, veal was up 5 percent, pork was down 4 percent from last year, and lamb and mutton production was down 8 percent.

**March 2008** contained 21 weekdays (including no holidays) and 5 Saturdays.

**March 2009** contained 22 weekdays (including no holidays) and 4 Saturdays.



# Contents

	<b>Page</b>
Red Meat Production, Commercial and FI, by Type, U.S. ....	1
Livestock Slaughter, Number and Average Weights, by Species and Type of Slaughter, U.S. ....	2
Commercial Red Meat Production, by State and U.S. ....	3
Commercial Cattle Slaughter, Number, Total and Average Live Weight, by State and U.S. ....	4
Commercial Calf Slaughter, Number, Total and Average Live Weight, by State and U.S. ....	5
Commercial Hog Slaughter, Number, Total and Average Live Weight, by State and U.S. ....	6
Commercial Sheep and Lamb Slaughter, Number, Total and Average Live Weight, by State and U.S. ....	7
Federally Inspected Classification of Number and Average Dressed Weight, by Species and Class and U.S. ....	8
Federally Inspected Slaughter by Species and Class, by Region and U.S. ....	9
Federally Inspected Percent of Total Commercial, by Species, U.S. ....	11
Reliability Statement.....	18
Types of Livestock Slaughter Plants .....	19
Terms and Definitions .....	20
Information Contacts .....	20



**Commercial Red Meat Production: United States <sup>1</sup>**

Type	Mar 2008	Feb 2009	Mar 2009	Mar 09 % of		Jan - Mar <sup>2</sup>		
				Mar 2008	Feb 2009	2008	2009	09 as % of 08
	<i>Million Pounds</i>	<i>Million Pounds</i>	<i>Million Pounds</i>	<i>Percent</i>	<i>Percent</i>	<i>Million Pounds</i>	<i>Million Pounds</i>	<i>Percent</i>
Beef	2,100.5	1,985.2	2,144.8	102	108	6,371.9	6,248.3	98
Veal	11.3	11.0	12.2	108	111	33.6	35.2	105
Pork	1,962.0	1,816.1	1,969.0	100	108	6,023.6	5,811.1	96
Lamb & Mutton	16.0	12.8	15.9	100	125	45.7	42.0	92
Total Red Meat <sup>3</sup>	4,089.8	*3,825.0	4,141.9	101	108	12,474.9	12,136.5	97

\* Revised.

<sup>1</sup> Based on packers' dressed weights and excludes farm slaughter.

<sup>2</sup> Accumulated totals and percentages based on unrounded data.

<sup>3</sup> Totals may not equal sum of the parts due to rounding.

**Federally Inspected Red Meat Production: United States <sup>1</sup>**

Type	Mar 2008	Feb 2009	Mar 2009	Mar 09 % of		Jan - Mar <sup>2</sup>		
				Mar 2008	Feb 2009	2008	2009	09 as % of 08
	<i>Million Pounds</i>	<i>Million Pounds</i>	<i>Million Pounds</i>	<i>Percent</i>	<i>Percent</i>	<i>Million Pounds</i>	<i>Million Pounds</i>	<i>Percent</i>
Beef	2,071.4	*1,954.5	2,112.8	102	108	6,280.4	6,153.8	98
Veal	11.1	10.8	12.0	108	111	32.8	34.4	105
Pork	1,947.7	1,803.2	1,955.2	100	108	5,979.7	5,771.3	97
Lamb & Mutton	15.4	12.2	15.3	99	125	44.1	40.2	91
Total Red Meat <sup>3</sup>	4,045.6	3,780.7	4,095.3	101	108	12,337.0	11,999.7	97

\* Revised.

<sup>1</sup> Based on packers' dressed weights and excludes farm slaughter.

<sup>2</sup> Accumulated totals and percentages based on unrounded data.

<sup>3</sup> Totals may not equal sum of the parts due to rounding.

**Livestock Slaughter: Number and Average Weights, United States<sup>1</sup>**

Species	Unit	Mar 2008	Feb 2009	Mar 2009	Mar 09 % of		Jan - Mar <sup>2</sup>		
					Mar 2008	Feb 2009	2008	2009	09 % of 08
					<i>Percent</i>	<i>Percent</i>			<i>Prct</i>
<b>Cattle No.</b>									
Fed. Insp.	Thou	2,683.6	2,478.8	2,680.7	100	108	8,129.0	7,827.6	96
Other	Thou	44.7	48.5	49.4	111	102	141.4	148.2	105
Comm'l. <sup>3</sup>	Thou	2,728.3	2,527.3	2,730.1	100	108	8,270.4	7,975.8	96
<b>Live Wt/Hd</b>									
Fed. Insp.	Lbs	1,278	1,314	1,308	102	100	1,287	1,310	102
Other	Lbs	1,148	1,131	1,147	100	101	1,146	1,140	99
Comm'l.	Lbs	1,276	1,310	1,305	102	100	1,284	1,307	102
<b>Calves No.</b>									
Fed. Insp.	Thou	69.9	73.0	78.8	113	108	208.2	235.5	113
Other	Thou	1.1	1.1	1.0	93	93	3.5	3.2	93
Comm'l. <sup>3</sup>	Thou	71.0	74.1	79.8	112	108	211.6	238.7	113
<b>Live Wt/Hd</b>									
Fed. Insp.	Lbs	271	255	261	96	103	269	253	94
Other	Lbs	401	401	409	102	102	401	404	101
Comm'l.	Lbs	273	257	263	96	102	272	255	94
<b>Hogs No.</b>									
Fed. Insp.	Thou	9,579.4	8,839.5	9,574.1	100	108	29,351.1	28,259.4	96
Other	Thou	81.2	73.7	78.7	97	107	249.6	228.9	92
Comm'l. <sup>3</sup>	Thou	9,660.6	8,913.2	9,652.8	100	108	29,600.7	28,488.3	96
<b>Live Wt/Hd</b>									
Fed. Insp.	Lbs	271	272	272	100	100	272	272	100
Other	Lbs	242	242	243	100	100	244	242	99
Comm'l.	Lbs	271	272	272	100	100	271	272	100
<b>Sheep&amp;Lambs No.</b>									
Fed. Insp.	Thou	219.4	169.1	209.7	96	124	622.6	557.2	90
Other	Thou	11.3	11.0	12.3	110	112	32.9	34.4	105
Comm'l. <sup>3</sup>	Thou	230.6	180.1	222.0	96	123	655.4	591.6	90
<b>Live Wt/Hd</b>									
Fed. Insp.	Lbs	141	145	146	103	101	142	145	102
Other	Lbs	107	102	104	97	102	100	102	102
Comm'l.	Lbs	139	142	143	103	101	140	142	101
<b>Goats No.</b>									
Fed. Insp.	Thou	59.0	44.4	55.7	94	126	153.0	147.8	97
Other	Thou	14.9	14.7	14.5	98	99	42.4	40.3	95
Comm'l. <sup>3</sup>	Thou	73.9	59.1	70.2	95	119	195.3	188.1	96
<b>Live Wt/Hd</b>									
Fed. Insp.	Lbs	62	62	62	100	100	62	62	100
Other	Lbs	56	69	69	123	100	65	70	108
Comm'l.	Lbs	61	64	63	104	99	63	64	101
<b>Bison No.</b>									
Fed. Insp.	Thou	4.9	4.2	4.7	96	111	14.5	13.3	91
Other	Thou	1.3	1.4	1.2	96	89	4.5	4.2	94
Comm'l. <sup>3</sup>	Thou	6.1	5.6	5.9	96	106	19.0	17.5	92

<sup>1</sup> Excludes slaughter on farms.

<sup>2</sup> Accumulated totals and percentages based on unrounded data.

<sup>3</sup> Totals may not equal sum of the parts due to rounding.

**Commercial Red Meat Production: By State and United States <sup>1</sup>**

State	Mar 2008	Feb 2009	Mar 2009	Mar 09 as % of <sup>2</sup>	
				Mar 2008	Feb 2009
	<i>Million Pounds</i>	<i>Million Pounds</i>	<i>Million Pounds</i>	<i>Percent</i>	<i>Percent</i>
AL	2.2	1.8	2.1	96	120
AK					
AZ	33.1	29.2	31.2	94	107
AR	5.5	5.1	4.5	83	89
CA	132.8	133.5	143.8	108	108
CO	165.9	165.1	169.4	102	103
DE-MD	2.8	3.1	3.5	126	113
FL	7.6	7.4	8.1	106	109
GA	13.0	10.3	9.4	73	91
HI	0.9	0.8	0.9	108	110
ID	19.1	17.4	19.3	101	111
IL	251.3	218.0	238.6	95	109
IN	136.3	137.2	145.6	107	106
IA	607.4	546.4	586.7	97	107
KS	429.3	396.4	425.3	99	107
KY	49.5	43.4	48.5	98	112
LA	0.7	0.5	0.7	97	127
MI	44.9	38.6	43.6	97	113
MN	208.6	199.2	215.0	103	108
MS	1.1	1.1	1.4	121	121
MO	149.6	136.0	154.2	103	113
MT	0.9	1.0	1.0	110	96
NE	582.6	541.3	596.4	102	110
NV	0.1	0.1	0.1	101	100
N ENG <sup>3</sup>	0.9	1.0	1.2	138	118
NJ	4.2	3.5	4.1	98	119
NM	0.5	0.4	0.4	88	114
NY	2.9	2.7	2.9	99	107
NC	202.7	206.2	218.5	108	106
ND	2.3	2.4	2.5	107	100
OH	24.0	23.7	25.7	107	108
OK	93.4	86.0	90.2	97	105
OR	4.7	4.3	4.7	99	108
PA	104.7	*100.1	106.5	102	106
SC	20.7	19.2	19.3	93	100
SD	89.6	88.2	98.6	110	112
TN	17.5	16.7	18.7	107	112
TX	408.3	396.0	433.6	106	109
UT	42.0	39.1	41.9	100	107
VA	46.1	37.1	39.2	85	106
WA	62.7	60.3	70.4	112	117
WV	0.4	0.6	0.6	149	98
WI	116.8	103.9	113.1	97	109
WY	0.4	0.6	0.5	120	90
US	4,089.8	*3,825.0	4,141.9	101	108

\* Revised.

<sup>1</sup> Includes total beef, veal, pork, lamb, and mutton.

<sup>2</sup> Percentages based on unrounded data.

<sup>3</sup> N ENG includes CT, ME, MA, NH, RI, and VT.

**Commercial Cattle Slaughter: By State and United States,  
March 2008 and 2009 <sup>1</sup>**

State	Number Slaughtered		Total Live Weight		Average Live Weight	
	2008	2009	2008	2009	2008	2009
	<i>1,000 Head</i>	<i>1,000 Head</i>	<i>1,000 Pounds</i>	<i>1,000 Pounds</i>	<i>Pounds</i>	<i>Pounds</i>
AL	0.5	0.7	499	668	934	938
AK						
AZ	41.7	43.2	58,998	56,483	1,420	1,311
AR	0.9	1.0	968	958	1,063	1,006
CA	125.6	137.2	159,952	177,591	1,296	1,314
CO	196.5	189.6	252,178	257,022	1,284	1,357
DE-MD	3.1	3.9	3,958	5,120	1,297	1,307
FL						
GA		16.4		16,355		1,002
HI	0.9	1.0	1,037	1,192	1,096	1,221
ID	24.1	26.2	30,628	33,809	1,286	1,310
IL						
IN	3.1	3.2	3,231	3,378	1,056	1,056
IA						
KS	530.1	508.6	662,513	654,876	1,250	1,288
KY	1.7	2.2	1,541	2,026	929	931
LA	0.6	0.7	489	517	802	766
MI	51.9	50.3	70,750	69,378	1,371	1,387
MN	67.0	70.6	94,621	99,952	1,421	1,425
MS	0.1		80		915	
MO	7.6	8.2	9,258	9,976	1,218	1,217
MT	1.1	1.2	1,258	1,438	1,174	1,202
NE	550.6	549.3	729,223	749,964	1,326	1,367
NV	0.1	0.1	134	141	1,155	1,078
N ENG <sup>2</sup>	0.9	1.1	969	1,231	1,134	1,084
NJ	2.5	2.8	3,070	3,218	1,237	1,160
NM	0.5	0.5	512	511	1,085	1,018
NY	2.3	2.5	2,782	3,050	1,235	1,232
NC	16.4	17.3	19,059	20,212	1,168	1,172
ND	1.2	1.2	1,427	1,420	1,203	1,218
OH	8.5	9.3	9,962	11,335	1,192	1,232
OK	2.4	2.6	2,750	2,973	1,148	1,154
OR	2.8	2.8	3,336	3,353	1,248	1,259
PA	77.0	76.6	97,535	97,460	1,278	1,285
SC	12.9	11.8	14,592	13,253	1,142	1,138
SD						
TN	2.3	3.0	1,947	2,539	866	858
TX	536.0	556.0	650,234	692,297	1,216	1,248
UT	52.1		67,082		1,289	
VA	0.9	1.1	828	1,112	963	1,011
WA	79.9	89.5	102,176	115,794	1,285	1,299
WV	0.6	0.8	611	882	1,017	1,109
WI	138.4	136.2	184,762	182,072	1,351	1,352
WY	0.5	0.6	575	735	1,233	1,190
US <sup>3</sup>	2,728.3	2,730.1	3,469,413	3,550,136	1,276	1,305

<sup>1</sup> Includes slaughter under Federal inspection and other Commercial slaughter, excludes farm slaughter.

<sup>2</sup> N ENG includes CT, ME, MA, NH, RI, and VT.

<sup>3</sup> States with no data printed are still included in the US total, data not printed to avoid disclosing individual operations. Accumulated totals and percentages based on unrounded data.



**Commercial Calf Slaughter: By State and United States,  
March 2008 and 2009 <sup>1</sup>**

State	Number Slaughtered		Total Live Weight		Average Live Weight	
	2008	2009	2008	2009	2008	2009
	<i>1,000 Head</i>	<i>1,000 Head</i>	<i>1,000 Pounds</i>	<i>1,000 Pounds</i>	<i>Pounds</i>	<i>Pounds</i>
AL						
AK						
AZ						
AR						
CA	15.5	22.3	1,877	2,484	122	113
CO						
DE-MD	0.2	0.2	43	52	273	269
FL	0.1	0.1	21	21	390	353
GA	0.1	0.1	37	34	457	482
HI						
ID						
IL	2.5	3.9	1,034	1,423	420	375
IN						
IA						
KS						
KY						
LA	0.3	0.3	143	158	511	522
MI	2.1	1.6	816	705	389	433
MN						
MS						
MO	0.1	0.1	34	22	425	435
MT						
NE						
NV						
N ENG <sup>2</sup>	0.2	3.4	67	338	327	102
NJ	6.1	5.8	2,535	2,523	419	437
NM	1.3	0.1	126	6	94	123
NY	16.1	12.7	1,766	1,488	114	121
NC	0.1	0.1	52	79	498	531
ND						
OH	0.1	4.6	32	2,188	354	478
OK		0.1		24		437
OR						
PA	13.4	11.6	5,329	4,952	399	426
SC						
SD						
TN	0.1	0.1	32	37	457	452
TX	2.1	3.1	1,173	585	573	190
UT						
VA						
WA						
WV						
WI						
WY						
US <sup>3</sup>	71.0	79.8	19,177	20,784	273	263

<sup>1</sup> Includes slaughter under Federal inspection and other Commercial slaughter, excludes farm slaughter.

<sup>2</sup> N ENG includes CT, ME, MA, NH, RI, and VT.

<sup>3</sup> States with no data printed are still included in the US total, data not printed to avoid disclosing individual operations. Accumulated totals and percentages based on unrounded data.

**Commercial Hog Slaughter: By State and United States,  
March 2008 and 2009 <sup>1</sup>**

State	Number Slaughtered		Total Live Weight		Average Live Weight	
	2008	2009	2008	2009	2008	2009
	<i>1,000 Head</i>	<i>1,000 Head</i>	<i>1,000 Pounds</i>	<i>1,000 Pounds</i>	<i>Pounds</i>	<i>Pounds</i>
AL	7.9	7.2	3,438	3,089	439	432
AK						
AZ	0.2	0.2	40	40	216	247
AR	16.4	13.4	7,474	6,057	456	453
CA	207.6	223.2	50,891	54,461	245	244
CO	0.7	0.6	173	162	258	257
DE-MD	1.3	1.5	346	378	267	258
FL	6.8	6.9	1,041	1,163	154	168
GA	10.7	6.3	2,413	1,636	226	260
HI	1.5	1.3	346	313	231	234
ID	12.8	9.6	3,328	2,446	261	256
IL	904.5	837.4	253,144	233,455	280	279
IN	667.0	704.4	176,839	189,337	265	269
IA	2,765.4	2,704.4	746,486	731,126	270	271
KS						
KY						
LA	1.7	1.5	402	347	234	230
MI	10.1	9.4	3,927	3,562	391	380
MN	803.2	811.1	209,857	214,041	262	264
MS	5.4	6.0	1,530	1,896	284	318
MO	692.2	708.3	190,982	196,873	276	278
MT	0.7	0.6	186	161	264	249
NE	669.6	668.0	180,005	180,441	269	270
NV						
N ENG <sup>2</sup>	1.1	1.2	229	272	208	231
NJ	8.4	8.3	779	793	93	95
NM	0.1	0.1	23	19	258	256
NY	2.0	2.0	368	376	188	188
NC	967.0	1,034.4	254,872	275,324	264	266
ND	8.7	9.4	2,192	2,406	253	256
OH	91.5	91.5	25,344	25,024	278	274
OK	434.4	418.4	120,886	116,232	278	278
OR	14.8	14.4	3,854	3,675	261	255
PA	235.5	245.4	59,873	63,055	255	257
SC						
SD	416.5	457.6	106,712	119,487	256	261
TN	51.3	56.5	24,273	25,589	475	455
TX	33.3	36.6	8,435	8,960	254	245
UT	4.4	4.2	924	779	210	186
VA	225.3	188.2	59,803	50,775	266	270
WA	2.2	1.9	421	443	192	228
WV	0.5	0.5	139	132	263	248
WI	49.3	44.8	21,933	19,366	452	438
WY	0.3	0.3	87	75	266	273
US <sup>3</sup>	9,660.6	9,652.8	2,615,373	2,622,851	271	272

<sup>1</sup> Includes slaughter under Federal inspection and other Commercial slaughter, excludes farm slaughter.

<sup>2</sup> N ENG includes CT, ME, MA, NH, RI, and VT.

<sup>3</sup> States with no data printed are still included in the US total, data not printed to avoid disclosing individual operations. Accumulated totals and percentages based on unrounded data.

**Commercial Sheep and Lamb Slaughter: By State and United States,  
March 2008 and 2009 <sup>1</sup>**

State	Number Slaughtered		Total Live Weight		Average Live Weight	
	2008	2009	2008	2009	2008	2009
	<i>1,000 Head</i>	<i>1,000 Head</i>	<i>1,000 Pounds</i>	<i>1,000 Pounds</i>	<i>Pounds</i>	<i>Pounds</i>
AL						
AK						
AZ	0.1	0.2	13	27	110	108
AR						
CA						
CO	89.7	92.7	14,238	14,992	159	162
DE-MD	3.0	3.0	299	303	98	102
FL	0.2	0.6	13	32	63	52
GA	0.3	0.2	28	11	92	66
HI		0.1		9		133
ID	0.2	0.2	25	21	130	126
IL						
IN	2.3	2.3	249	266	107	113
IA	33.9	34.6	5,274	5,338	156	155
KS	0.2	0.2	23	24	97	112
KY	0.8	0.9	108	115	127	125
LA	0.3	0.5	29	40	86	89
MI	15.6	15.3	2,061	2,039	133	133
MN	1.4	1.7	182	226	134	133
MS		0.1		6		62
MO	0.4	0.3	53	42	126	121
MT	0.3	0.3	24	33	85	116
NE		0.1		10		149
NV	0.1	0.1	10	7	135	138
N ENG <sup>2</sup>	2.4	2.7	213	252	87	95
NJ	12.8	10.1	979	815	77	81
NM	1.3	1.4	189	208	144	148
NY	3.9	2.5	266	225	69	89
NC	0.5	0.5	42	41	84	74
ND	0.1	0.1	11	9	132	114
OH	1.0	0.8	102	89	104	109
OK	0.1	0.2	14	19	103	113
OR	2.0	2.1	277	303	142	147
PA	5.7	4.4	486	434	85	99
SC		0.1		11		82
SD	0.2	0.2	24	23	123	134
TN	1.1	1.2	85	91	79	76
TX	2.8	4.9	317	457	113	94
UT	2.8	3.1	391	450	140	144
VA	1.0	1.5	100	155	99	102
WA	0.6	0.5	88	80	159	164
WV						
WI	0.9	0.9	124	123	134	136
WY	0.1	0.1	16	12	159	137
US <sup>3</sup>	230.6	222.0	32,059	31,764	139	143

<sup>1</sup> Includes slaughter under Federal inspection and other Commercial slaughter, excludes farm slaughter.

<sup>2</sup> N ENG includes CT, ME, MA, NH, RI, and VT.

<sup>3</sup> States with no data printed are still included in the US total, data not printed to avoid disclosing individual operations. Accumulated totals and percentages based on unrounded data.

**Classification of Livestock Slaughtered Under Federal Inspection:  
United States**

Item	Mar	Feb	Mar	Jan - Mar <sup>1</sup>		Mar	Feb	Mar	Jan - Mar <sup>1</sup>	
	2008	2009	2009	2008	2009	2008	2009	2009	2008	2009
	<i>1,000 Head</i>	<i>1,000 Head</i>	<i>1,000 Head</i>	<i>1,000 Head</i>	<i>1,000 Head</i>	<i>Percent of Total</i>	<i>Percent of Total</i>	<i>Percent of Total</i>	<i>Percent of Total</i>	<i>Percent of Total</i>
Class <sup>2</sup>										
Cattle										
Steers	1,326	1,190	1,312	3,991	3,783	49.4	48.0	49.0	49.1	48.3
Heifers	837	763	832	2,523	2,377	31.2	30.8	31.1	31.0	30.4
All Cows	473	487	491	1,483	1,544	17.6	19.6	18.3	18.2	19.7
Dairy Cows	215	*243	238	665	763	8.0	9.8	8.9	8.2	9.7
Other Cows	258	*244	253	818	782	9.6	9.8	9.4	10.1	10.0
Bulls	47	39	45	132	123	1.7	1.6	1.7	1.6	1.6
Total <sup>1</sup>	2,684	2,479	2,681	8,129	7,828	100.0	100.0	100.0	100.0	100.0
Calves & Vealers	70	73	79	208	235	100.0	100.0	100.0	100.0	100.0
Hogs										
Barrow & Gilts	9,242	8,569	9,273	28,362	27,386	96.5	96.9	96.9	96.6	96.9
Sows	299	238	267	873	771	3.1	2.7	2.8	3.0	2.7
Boars	39	33	34	117	102	0.4	0.4	0.4	0.4	0.4
Total <sup>1</sup>	9,579	8,839	9,574	29,351	28,259	100.0	100.0	100.0	100.0	100.0
Sheep										
Mature Sheep	10	8	10	27	26	4.5	4.9	4.7	4.4	4.8
Lambs & Yrlngs	210	161	200	595	531	95.5	95.1	95.3	95.6	95.2
Total <sup>1</sup>	219	169	210	623	557	100.0	100.0	100.0	100.0	100.0
Average Dressed Weight										
	<i>Pounds</i>	<i>Pounds</i>	<i>Pounds</i>	<i>Pounds</i>	<i>Pounds</i>					
Cattle										
Steers <sup>3</sup>	775	791	791	775	789					
Heifers <sup>3</sup>	828	853	848	829	851					
All Cows <sup>3</sup>	766	796	790	770	792					
Bulls <sup>3</sup>	627	625	629	627	622					
Bulls <sup>3</sup>	896	874	881	886	877					
Calves & Vealers	160	150	154	160	148					
Hogs										
Barrow Gilts <sup>4</sup>	204	204	204	204	204					
Sows <sup>4</sup>	200	202	202	201	202					
Boars <sup>4</sup>	308	300	302	307	302					
Boars <sup>4</sup>	207	196	199	211	199					
Sheep										
Mature Sheep <sup>5</sup>	70	72	73	71	72					
Lamb & Yrlngs <sup>5</sup>	68	68	68	67	67					
Lamb & Yrlngs <sup>5</sup>	70	72	73	71	73					

\* Revised.

<sup>1</sup> Total and percentages based on unrounded data.

<sup>2</sup> Species totals and classification reported by food inspectors, Inspection Operations, FSIS.

<sup>3</sup> Included in cattle average dressed weight.

<sup>4</sup> Included in hog average dressed weight.

<sup>5</sup> Included in sheep average dressed weight.

**Federally Inspected Slaughter: By Region and United States,  
March 2009 <sup>1</sup>**

Standard Federal Regions	Cattle							Calves
	Total <sup>2</sup>	Steers	Heifers	Cows			Bulls	Total
				All	Dairy	Other		
	<i>1,000 Head</i>	<i>1,000 Head</i>	<i>1,000 Head</i>	<i>1,000 Head</i>	<i>1,000 Head</i>	<i>1,000 Head</i>	<i>1,000 Head</i>	<i>1,000 Head</i>
1	1.0	0.4	0.2					3.3
2	5.2	1.8	0.3	2.7	2.3	0.4	0.4	18.4
3	79.2	30.2	8.0	39.8	31.7	8.0	1.3	11.9
4	60.4	1.8	0.5	49.0	12.0	37.0	9.0	0.4
5	329.4	139.5	45.2	137.3	74.4	62.9	7.4	18.3
6	554.4	293.0	172.3	78.9	17.2	61.7	10.3	3.1
7	1,099.7	596.6	438.7	56.7	2.0	54.7	7.7	
8	252.8	118.2	117.7					
9	181.0	89.2	10.2	78.6	70.1	8.5	3.0	22.1
10	117.7	41.7	39.3	33.1	21.8	11.3	3.6	
US <sup>2</sup>	2,680.7	1,312.4	832.4	491.3	238.2	253.1	44.7	78.8
	Hogs				Sheep			
	Total <sup>2</sup>	Barrows & Gilts	Sows	Boars	Total <sup>2</sup>	Mature Sheep	Lambs & Yearlings	
	<i>1,000 Head</i>	<i>1,000 Head</i>	<i>1,000 Head</i>	<i>1,000 Head</i>	<i>1,000 Head</i>	<i>1,000 Head</i>	<i>1,000 Head</i>	<i>1,000 Head</i>
1	0.9	0.9			2.6	0.3	2.2	
2	10.2	10.0	0.1	0.1	12.1	1.2	10.9	
3	433.7	422.1	1.4	10.2	9.5	0.3	9.1	
4	1,394.4	1,316.6	76.2	1.6	3.6	0.9	2.6	
5	2,469.2	2,356.6	108.9	3.7	24.2	3.0	21.2	
6	457.0	436.6	20.3	0.1				
7	4,095.5	4,017.4	59.4	18.7	34.9	0.3	34.6	
8	469.5	469.3	0.2		95.4	1.9	93.5	
9	218.4	218.2	0.1	0.1				
10	25.3	25.3	0.1		2.1	0.2	2.0	
US <sup>2</sup>	9,574.1	9,273.0	266.6	34.5	209.7	9.8	199.9	

<sup>1</sup> States included in regions are as follows: 1- CT, ME, NH, VT, MA, & RI; 2- NY & NJ; 3- DE-MD, PA, WV, & VA; 4- AL, FL, GA, KY, MS, NC, SC, & TN; 5- IL, IN, MI, MN, OH, & WI; 6- AR, LA, NM, OK, & TX; 7- IA, KS, MO, & NE; 8- CO, MT, ND, SD, UT, & WY; 9- AZ, CA, HI & NV; 10- AK, ID, OR, & WA.

<sup>2</sup> Regions with no data printed are still included in the US and Region total, data not printed to avoid disclosing individual operations. Totals may not add due to rounding.

**Federally Inspected Slaughter: By Region and United States,  
January - March 2009<sup>1</sup>**

Standard Federal Regions	Cattle							Calves
	Total <sup>2</sup>	Steers	Heifers	Cows			Bulls	Total
				All	Dairy	Other		
	<i>1,000 Head</i>	<i>1,000 Head</i>	<i>1,000 Head</i>	<i>1,000 Head</i>	<i>1,000 Head</i>	<i>1,000 Head</i>	<i>1,000 Head</i>	<i>1,000 Head</i>
1	3.0	1.3	0.6					5.7
2	15.0	5.1	0.9	8.0	6.9	1.1	1.0	61.9
3	234.7	89.9	21.6	119.8	95.5	24.4	3.3	34.2
4	191.8	5.0	1.6	159.7	40.9	118.8	25.5	1.1
5	975.4	396.8	132.0	424.8	230.0	194.8	21.8	54.7
6	1,592.1	813.4	484.2	263.6	70.8	192.9	30.9	9.7
7	3,182.1	1,726.5	1,265.4	170.6	5.9	164.8	19.5	
8	754.4	366.9	334.3					
9	541.6	255.0	31.7	247.6	226.2	21.4	7.3	65.1
10	337.6	123.3	104.3	101.5	66.1	35.4	8.5	
US <sup>2</sup>	7,827.6	3,783.1	2,376.6	1,544.5	762.5	781.9	123.5	235.5
	Hogs				Sheep			
	Total <sup>2</sup>	Barrows & Gilts	Sows	Boars	Total <sup>2</sup>	Mature Sheep	Lambs & Yearlings	
	<i>1,000 Head</i>	<i>1,000 Head</i>	<i>1,000 Head</i>	<i>1,000 Head</i>	<i>1,000 Head</i>	<i>1,000 Head</i>	<i>1,000 Head</i>	
1	2.8	2.7	0.1		6.5	0.7	5.8	
2	28.9	28.4	0.3	0.3	32.1	3.4	28.7	
3	1,286.3	1,255.0	4.0	27.3	24.7	1.0	23.7	
4	4,091.5	3,859.1	227.1	5.3	9.1	2.6	6.6	
5	7,253.1	6,934.5	308.1	10.6	69.4	8.2	61.1	
6	1,413.2	1,346.5	65.7	0.9				
7	12,100.2	11,877.6	164.8	57.8	91.0	0.8	90.2	
8	1,367.4	1,366.6	0.8		251.5	5.3	246.2	
9	642.2	641.9	0.2	0.1				
10	73.8	73.5	0.3		5.4	0.5	4.9	
US <sup>2</sup>	28,259.4	27,385.7	771.4	102.3	557.2	26.5	530.7	

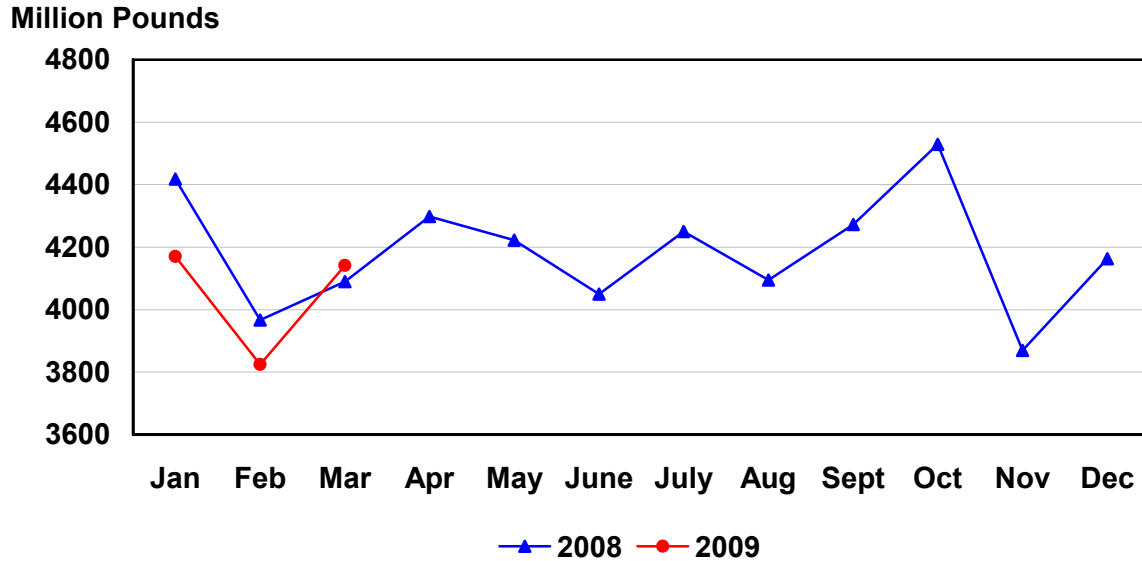
<sup>1</sup> States included in regions are as follows: 1- CT, ME, NH, VT, MA, & RI; 2- NY & NJ; 3- DE-MD, PA, WV, & VA; 4- AL, FL, GA, KY, MS, NC, SC, & TN; 5- IL, IN, MI, MN, OH, & WI; 6- AR, LA, NM, OK, & TX; 7- IA, KS, MO, & NE; 8- CO, MT, ND, SD, UT, & WY; 9- AZ, CA, HI & NV; 10- AK, ID, OR, & WA.

<sup>2</sup> Regions with no data printed are still included in the US and Region total, data not printed to avoid disclosing individual operations. Totals may not add due to rounding.

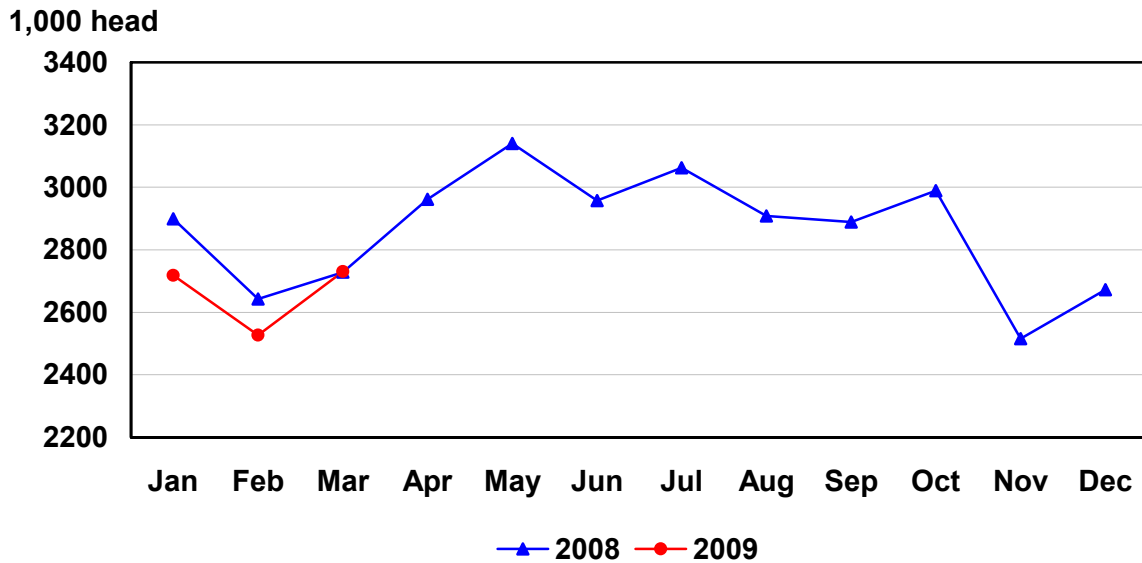
**Federally Inspected Slaughter: Percent of Total Commercial Slaughter by Species, United States**

Species	Mar 2008	Feb 2009	Mar 2009	Jan - Mar	
				2008	2009
	<i>Percent</i>	<i>Percent</i>	<i>Percent</i>	<i>Percent</i>	<i>Percent</i>
Cattle	98.4	98.1	98.2	98.3	98.1
Calves	98.4	98.5	98.7	98.4	98.7
Hogs	99.2	99.2	99.2	99.2	99.2
Sheep	95.1	93.9	94.4	95.0	94.2

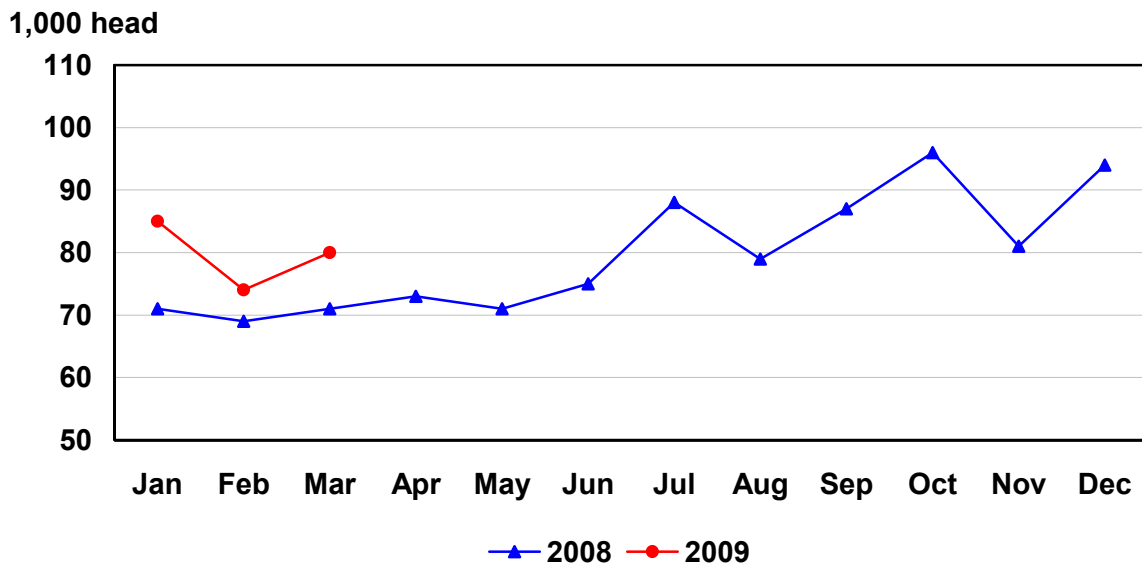
## U.S. Monthly Commercial Red Meat Production



# U.S. Monthly Commercial Slaughter Cattle

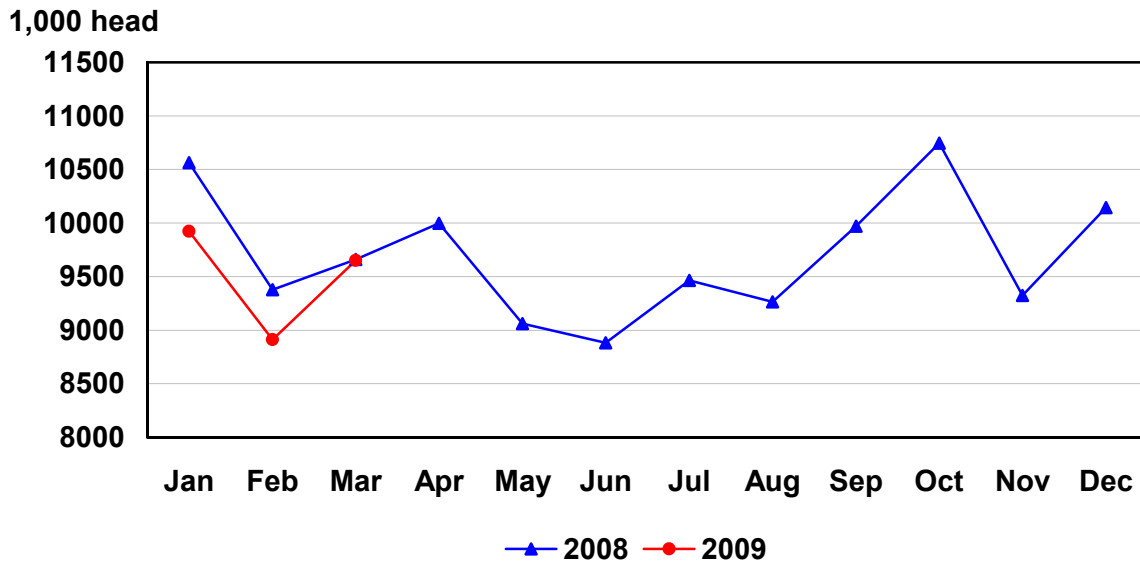


# U.S. Monthly Commercial Slaughter Calves

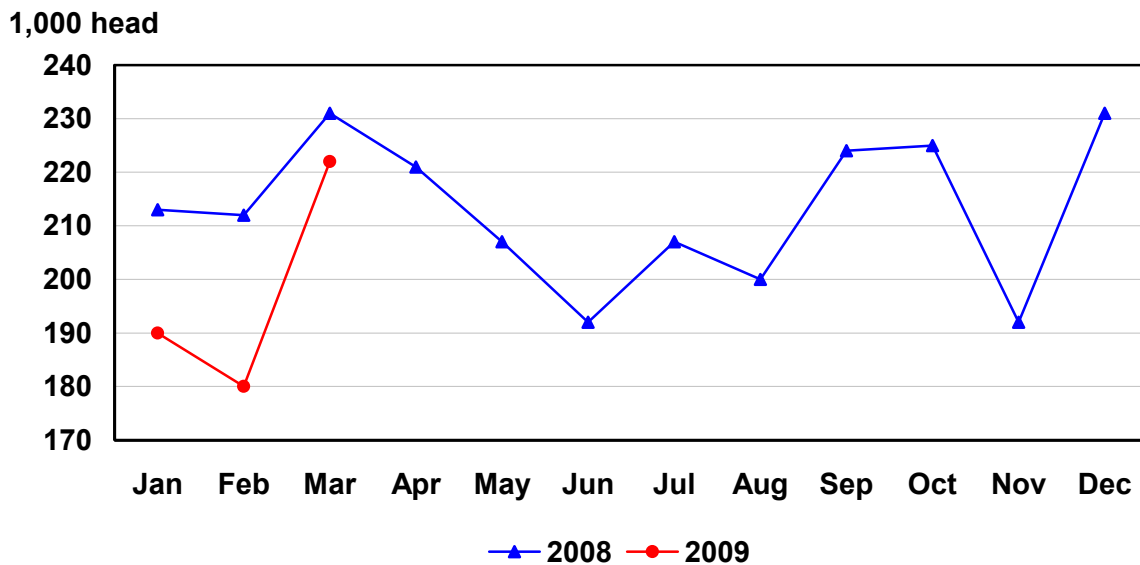




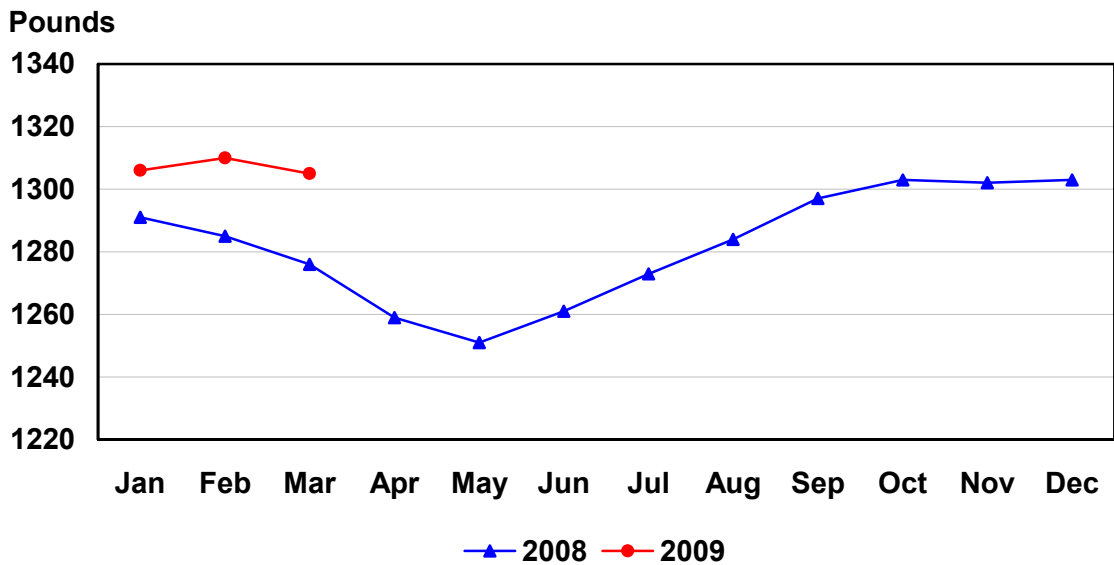
# U.S. Monthly Commercial Slaughter Hogs



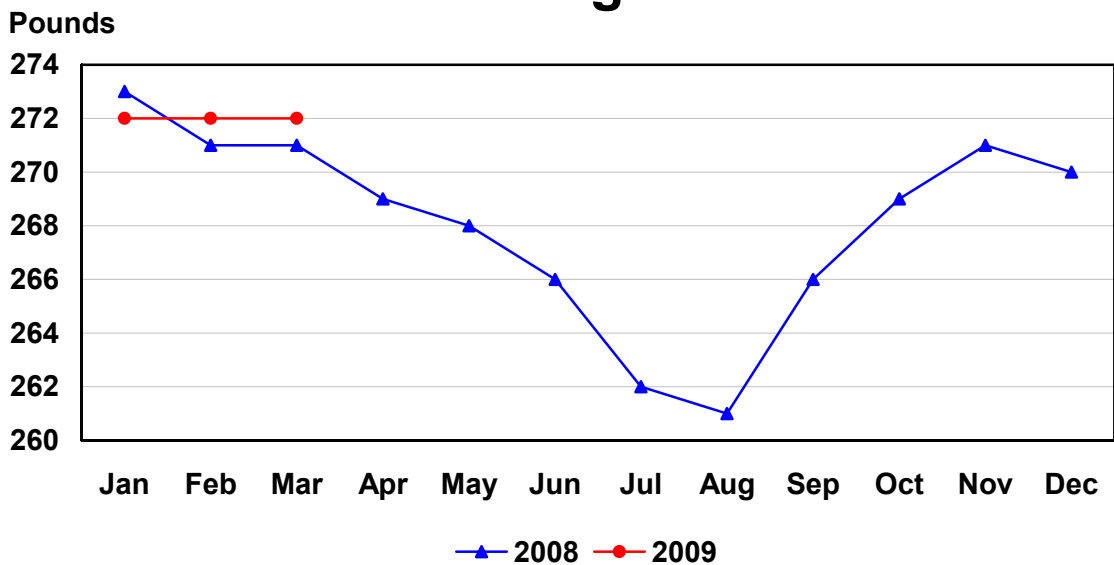
# U.S. Monthly Commercial Slaughter Sheep



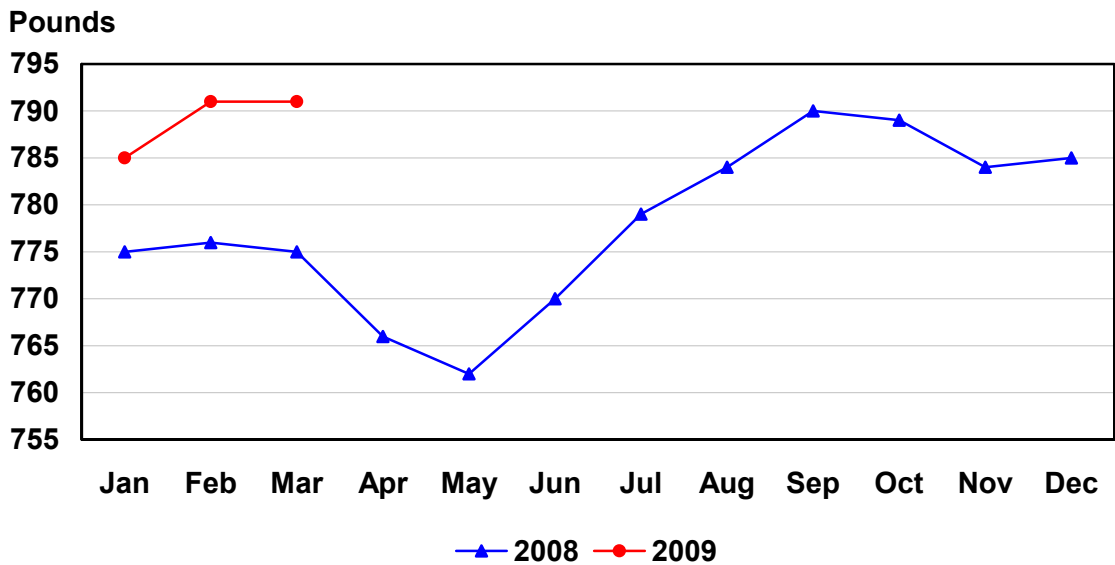
# U.S. Monthly Commercial Slaughter Average Live Weight Cattle



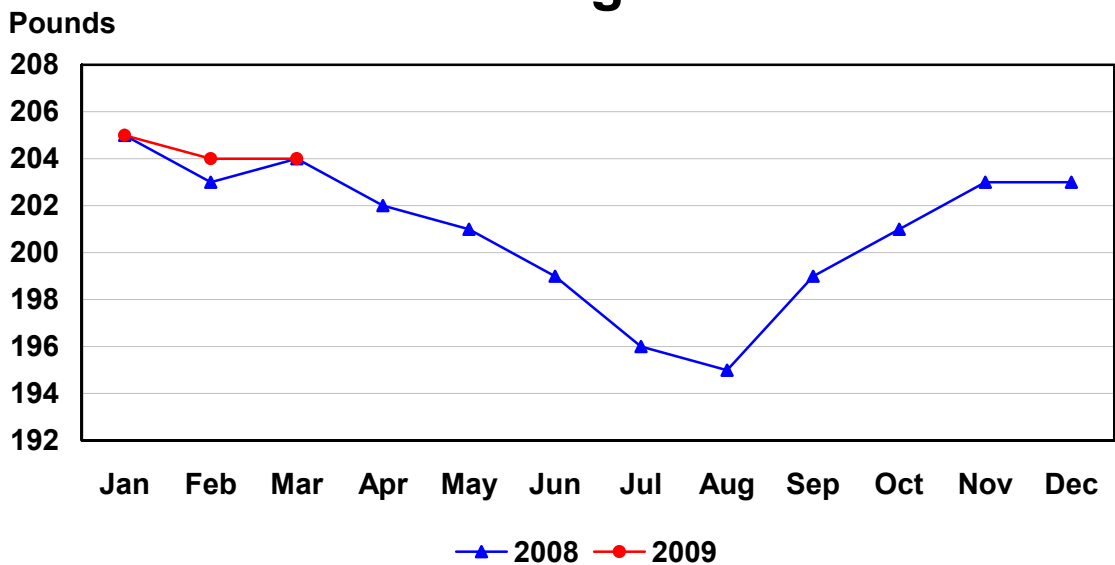
# U.S. Monthly Commercial Slaughter Average Live Weight Hogs



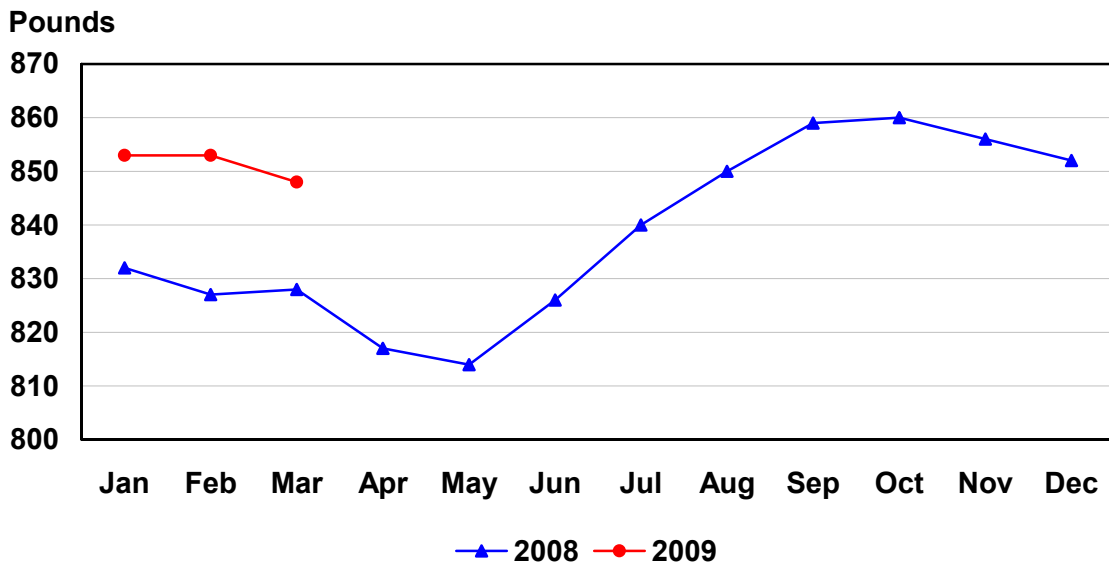
# U.S. Monthly Federally Inspected Average Dressed Weight Cattle



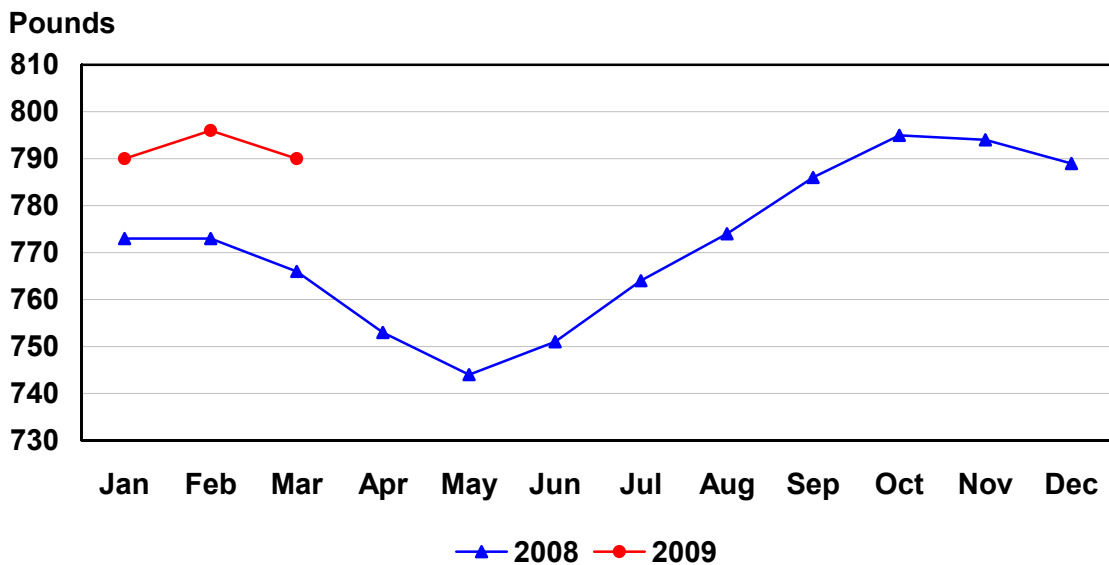
# U.S. Monthly Federally Inspected Average Dressed Weight Hogs



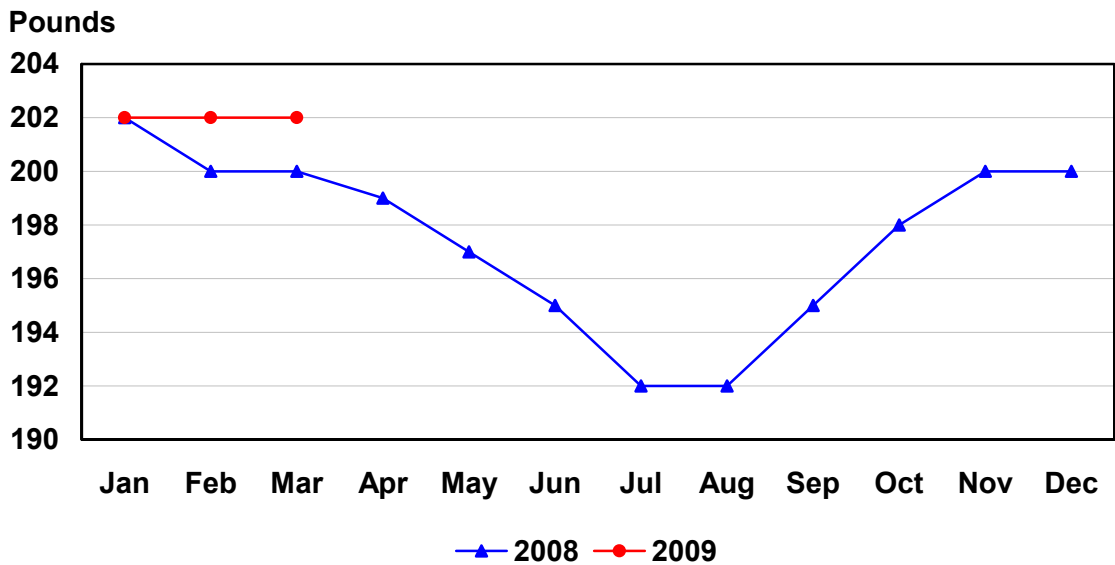
# U.S. Monthly Federally Inspected Average Dressed Weight Steers



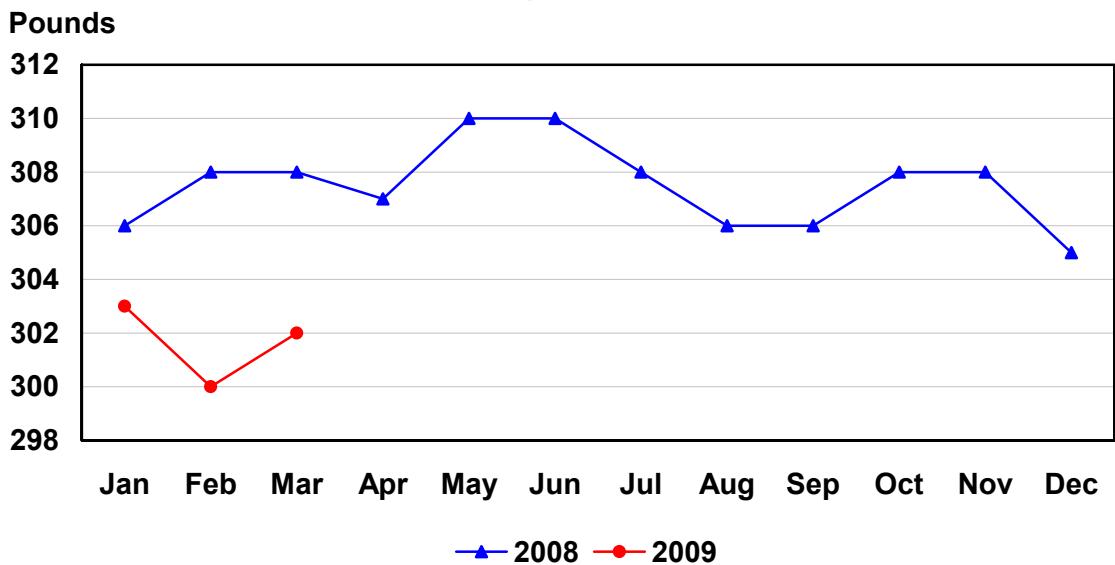
# U.S. Monthly Federally Inspected Average Dressed Weight Heifers



## U.S. Monthly Federally Inspected Average Dressed Weight Barrows and Gilts



## U.S. Monthly Federally Inspected Average Dressed Weight Sows



## Reliability of Livestock Slaughter Estimates

**Data Sources:** Primary data for the commercial livestock slaughter estimates are obtained from electronic reports completed by inspectors from the Food Safety and Inspection Service (FSIS), USDA, which provide daily counts of animals slaughtered in Federally Inspected (FI) plants, in addition to total live and dressed weights. These counts are combined with data from State-administered Non-Federally Inspected (NFI) slaughter plants to derive total commercial slaughter estimates. More than 95 percent of the total U.S. slaughter for any species is under Federal Inspection.

There are nearly 800 livestock slaughter plants in the U.S. operating under Federal Inspection and over 2,000 Non-Federally Inspected (State-inspected or custom-exempt) slaughter plants. Slaughter from State-inspected Talmedge-Aiken plants is included in FI totals (see Types of Plants, page 18). To prevent duplication in reporting between FI and NFI plants and assure all FI plants are included, certificates prepared by FSIS identifying operating status are constantly monitored

**Revision Policy:** Number of head slaughtered, live weights, and dressed weights are subject to revision the following month after the monthly release. Annual totals are published in the slaughter summary each March which includes any revisions made to current and previous year's published data. Revisions are generally the result of late reports received from slaughter plants and are usually less than one-half of one percent. No revisions will be made to the previous year's data after the publication of the annual summary in March.

**Procedures and Reliability:** The livestock slaughter data is obtained electronically on a daily basis and summarized approximately two weeks after the week of slaughter. An edit compares each plant's data with the historical data for that plant. Data are checked for unusual values for head kill, patterns of kill, average weights, and dressing percent, based on each plant's past operating profile. In addition, the edit provides a listing of missing reports for follow-up contact with FSIS. Average live and dressed weights and dressing percentages by State are compared with the previous weeks as an additional check. Fluctuations are frequently the result of plants permanently or temporarily closing and a shift in the species reported.

The FSIS District Veterinary Medical Specialists (DVMS) are contacted by e-mail or telephone for missing or potentially erroneous slaughter data. This assures that plants slaughtering a large number of head or several species are accounted for each week. Any corrections FSIS makes to the slaughter data are included in the summary.

Imputation may be necessary for incomplete reports. The imputation of live and dressed weights is based on the current week reported data of plants of similar size and location. Imputation for live and dressed weight data for cattle and hogs is less than 10 percent and 7 percent, respectively. The imputation for calves and sheep is more frequent and variable. If no data is received electronically or by other means, for plants slaughtering fewer than 50 total head weekly of only one species, data are imputed. The imputation of head for any plant is based on the historical data for that particular plant. The imputation of head slaughtered is rare but when necessary, the imputed head kill for missing plants usually is less than 1 percent of the U.S. head kill totals.

FI data are summarized weekly and accumulated to a monthly total for this release. These weekly totals are published by USDA's Agricultural Marketing Service (AMS) in **Livestock, Meat, Wool Market News**, Weekly Summary, and Statistics and are also available on the NASS website. NFI data are summarized monthly only.

Livestock slaughter estimates are based on a census of operating plants and therefore, have no sampling error. However, they may be subject to errors such as omissions, duplications and mistakes in reporting, recording and processing the data. These errors are minimized through rigid quality controls in the edit and summarization process, and a careful review of all reported data for consistency and reasonableness.

No data are published when an individual plant's data could be divulged. If not published, these data are still included in US and region totals. A review of the data is made annually to determine the publishable data.

### **Types of Livestock Slaughter Plants**

There are generally **four types** of slaughtering plants.

- (1) **Federally Inspected (FI) Plants:** Plants that transport meat interstate must employ federal inspectors to assure compliance with USDA standards. Any State whose commercial plants operate entirely under federal inspection may still have custom-exempt establishments for which NFI estimates are made.
- (2) **Talmedge-Aiken (TA) Plants:** Slaughter plants in which USDA is responsible for inspection. However, federal inspection is carried out by State employees. These plants are considered to be federally inspected.
- (3) **Non-Federally Inspected (NFI) Plants:** Plants which sell and transport only intrastate. State inspectors assure compliance with individual State standards for these NFI plants. Mobile slaughtering units are excluded and are considered farm slaughter.
- (4) **Custom-Exempt Plants:** Plants that do not sell meat but operate on a custom basis only are custom-exempt. The animals and meat are not inspected, but the facilities must meet health standards. These are considered NFI plants and head kill is included in NFI totals.

## Terms and Definitions Used for Livestock Slaughter Estimates

**Average Live Weight:** Excludes post-mortem condemnations

**Commercial Production:** Includes slaughter and meat production in federally inspected and other plants, but excludes animals slaughtered on farms.

**Dressed Weight:** The weight of a chilled animal carcass. Beef with kidney knob in; veal with hide off; lamb and mutton with pluck out; pork with leaf fat and kidneys out, jowls on and head off.

**Dressing Percent:** Usually expressed as a percentage yield of chilled carcass in relation to the weight of the live animal on hoof. For example, a live hog that weighed 200 pounds on hoof and yielded a carcass weighing 140 pounds would have a dressing percentage of 70.

**Food and Meat Inspection:** Includes examination, checking, or testing of a carcass and/or meat against established government standards and involves checking the facility for cleanliness, health of animals, or parts of animals and quality of the meat produced.

**Number of Head:** Includes post-mortem condemnations.

**Plant, Slaughter:** An establishment where animals are killed and butchered.

**Red Meat:** Red meat production is the carcass weight after slaughter excluding condemnation and is comprised of beef, veal, pork, and lamb and mutton. The FI red meat production is equal to the total carcass weight after slaughter. The NFI meat production formula is (NFI head kill) X (live weight) X (FI dressing percentage) = NFI red meat production.

**Slaughter:** Killing and butchering of animals primarily for food.

**Slaughter, Farm:** Animals slaughtered on farms primarily for home consumption. Excludes custom slaughter for farmers at commercial establishments, but includes mobile slaughtering on farms. These estimates appear only in the annual slaughter release.

**Total Live Weight:** Excludes post-mortem condemnations.

**Wholesome Meat Act:** Legislation that specifies that all meat produced for sale in the U.S. must be inspected. Meat that is transported interstate must be inspected in compliance with Federal (USDA) Standards.

### Information Contacts

Listed below are the commodity specialists in the Livestock Branch of the National Agricultural Statistics Service to contact for additional information.

Dan Kerestes, Chief, Livestock Branch.....	(202) 720-3570
Scott Hollis, Head, Livestock Section.....	(202) 690-2424
Jim Collom – Dairy Products.....	(202) 690-3236
Joe Gaynor – Dairy Products Prices.....	(202) 690-2168
Jason Hardegree – Cattle, Cattle on Feed.....	(202) 720-3040
Sherry Bertramsen – Livestock Slaughter.....	(515) 284-4340
Mike Miller – Milk Production and Milk Cows.....	(202) 720-3278
Everett Olbert – Sheep and Goats.....	(202) 720-4751
Nicholas Streff – Hogs and Pigs.....	(202) 720-3106



## ACCESS TO REPORTS!!

---

For your convenience, there are several ways to obtain NASS reports, data products, and services:

### INTERNET ACCESS

All NASS reports are available free of charge on the worldwide Internet. For access, connect to the Internet and go to the NASS Home Page at: [www.nass.usda.gov](http://www.nass.usda.gov).

### E-MAIL SUBSCRIPTION

All NASS reports are available by subscription free of charge direct to your e-mail address. Starting with the NASS Home Page at [www.nass.usda.gov](http://www.nass.usda.gov), under the right navigation, *Receive reports by Email*, click on **National** or **State**. Follow the instructions on the screen.

-----

### PRINTED REPORTS OR DATA PRODUCTS

**CALL OUR TOLL-FREE ORDER DESK: 800-999-6779 (U.S. and Canada)**  
**Other areas, please call 703-605-6220      FAX: 703-605-6900**  
**(Visa, MasterCard, check, or money order acceptable for payment.)**

-----

### ASSISTANCE

For **assistance** with general agricultural statistics or further information about NASS or its products or services, contact the **Agricultural Statistics Hotline** at **800-727-9540**, 7:30 a.m. to 4:00 p.m. ET, or e-mail: [nass@nass.usda.gov](mailto:nass@nass.usda.gov).

The U.S. Department of Agriculture (USDA) prohibits discrimination in all its programs and activities on the basis of race, color, national origin, age, disability, and where applicable, sex, marital status, familial status, parental status, religion, sexual orientation, genetic information, political beliefs, reprisal, or because all or part of an individual's income is derived from any public assistance program. (Not all prohibited bases apply to all programs.) Persons with disabilities who require alternative means for communication of program information (Braille, large print, audiotape, etc.) should contact USDA's TARGET Center at (202) 720-2600 (voice and TDD).

To file a complaint of discrimination, write to USDA, Director, Office of Civil Rights, 1400 Independence Avenue, S.W., Washington, D.C. 20250-9410, or call (800) 795-3272 (voice) or (202) 720-6382 (TDD). USDA is an equal opportunity provider and employer.