
Released May 22, 2009, by the National Agricultural Statistics Service (NASS), Agricultural Statistics Board, U.S. Department of Agriculture. For information on *Livestock Slaughter* call Sherry Bertramsen at (515) 284-4340, office hours 7:00 a.m. to 4:00 p.m. CT.

Commercial Red Meat Production Down From Last Year

Commercial red meat production for the United States totaled 4.08 billion pounds in April, down 5 percent from the 4.30 billion pounds produced in April 2008.

Beef production, at 2.13 billion pounds, was 5 percent below the previous year. Cattle slaughter totaled 2.77 million head, down 6 percent from April 2008. The average live weight was up 17 pounds from the previous year, at 1,276 pounds.

Veal production totaled 11.2 million pounds, 6 percent below April a year ago. Calf slaughter totaled 68,000 head, down 7 percent from April 2008. The average live weight was up 3 pounds from last year, at 281 pounds.

Pork production totaled 1.92 billion pounds, down 5 percent from the previous year. Hog kill totaled 9.43 million head, down 6 percent from April 2008. The average live weight was up 3 pounds from the previous year, at 272 pounds.

Lamb and mutton production, at 15.5 million pounds, was up 1 percent from April 2008. Sheep slaughter totaled 229,100 head, 4 percent above last year. The average live weight was 135 pounds, down 3 pounds from April a year ago.

January to April 2009 commercial red meat production was 16.2 billion pounds, down 3 percent from 2008. Accumulated beef production was down 3 percent from last year, veal was up 2 percent, pork was down 4 percent from last year, and lamb and mutton production was down 6 percent.

April 2008 contained 22 weekdays (including no holidays) and 4 Saturdays.

April 2009 contained 22 weekdays (including no holidays) and 4 Saturdays.

Contents

	Page
Red Meat Production, Commercial and FI, by Type, U.S.	1
Livestock Slaughter, Number and Average Weights, by Species and Type of Slaughter, U.S.	2
Commercial Red Meat Production, by State and U.S.	3
Commercial Cattle Slaughter, Number, Total and Average Live Weight, by State and U.S.	4
Commercial Calf Slaughter, Number, Total and Average Live Weight, by State and U.S.	5
Commercial Hog Slaughter, Number, Total and Average Live Weight, by State and U.S.	6
Commercial Sheep and Lamb Slaughter, Number, Total and Average Live Weight, by State and U.S.	7
Federally Inspected Classification of Number and Average Dressed Weight, by Species and Class and U.S.	8
Federally Inspected Slaughter by Species and Class, by Region and U.S.	9
Federally Inspected Percent of Total Commercial, by Species, U.S.	11
Reliability Statement.....	18
Types of Livestock Slaughter Plants	19
Terms and Definitions	20
Information Contacts	20

Commercial Red Meat Production: United States ¹

Type	Apr 2008	Mar 2009	Apr 2009	Apr 09 % of		Jan - Apr ²		
				Apr 2008	Mar 2009	2008	2009	09 as % of 08
	<i>Million Pounds</i>	<i>Million Pounds</i>	<i>Million Pounds</i>	<i>Percent</i>	<i>Percent</i>	<i>Million Pounds</i>	<i>Million Pounds</i>	<i>Percent</i>
Beef	2,255.4	*2,144.6	2,133.1	95	99	8,627.4	8,381.2	97
Veal	11.9	12.2	11.2	94	92	45.5	46.4	102
Pork	2,015.6	1,969.0	1,924.1	95	98	8,039.2	7,735.2	96
Lamb & Mutton	15.3	15.9	15.5	101	97	61.0	57.4	94
Total Red Meat ³	4,298.2	*4,141.6	4,083.9	95	99	16,773.1	16,220.2	97

* Revised.

¹ Based on packers' dressed weights and excludes farm slaughter.

² Accumulated totals and percentages based on unrounded data.

³ Totals may not equal sum of the parts due to rounding.

Federally Inspected Red Meat Production: United States ¹

Type	Apr 2008	Mar 2009	Apr 2009	Apr 09 % of		Jan - Apr ²		
				Apr 2008	Mar 2009	2008	2009	09 as % of 08
	<i>Million Pounds</i>	<i>Million Pounds</i>	<i>Million Pounds</i>	<i>Percent</i>	<i>Percent</i>	<i>Million Pounds</i>	<i>Million Pounds</i>	<i>Percent</i>
Beef	2,224.5	*2,112.6	2,102.1	94	100	8,505.0	8,255.7	97
Veal	11.7	12.0	11.0	94	92	44.5	45.4	102
Pork	2,000.5	1,955.2	1,910.8	96	98	7,980.2	7,682.1	96
Lamb & Mutton	14.6	15.3	14.7	101	96	58.7	54.9	94
Total Red Meat ³	4,251.3	*4,095.1	4,038.6	95	99	16,588.4	16,038.1	97

* Revised.

¹ Based on packers' dressed weights and excludes farm slaughter.

² Accumulated totals and percentages based on unrounded data.

³ Totals may not equal sum of the parts due to rounding.

Livestock Slaughter: Number and Average Weights, United States¹

Species	Unit	Apr 2008	Mar 2009	Apr 2009	Apr 09 % of		Jan - Apr ²		
					Apr 2008	Mar 2009	2008	2009	09 % of 08
					<i>Percent</i>	<i>Percent</i>			<i>Prcnt</i>
Cattle No.									
Fed. Insp.	Thou	2,913.6	*2,680.8	2,724.4	94	102	11,042.7	10,552.1	96
Other	Thou	47.4	49.4	47.7	101	97	188.8	195.9	104
Comm'l. ³	Thou	2,961.1	*2,730.2	2,772.1	94	102	11,231.5	10,748.1	96
Live Wt/Hd									
Fed. Insp.	Lbs	1,261	*1,307	1,278	101	98	1,280	1,302	102
Other	Lbs	1,144	1,147	1,143	100	100	1,145	1,141	100
Comm'l.	Lbs	1,259	1,305	1,276	101	98	1,278	1,299	102
Calves No.									
Fed. Insp.	Thou	72.2	78.8	67.1	93	85	280.4	302.5	108
Other	Thou	1.1	1.0	0.9	82	88	4.6	4.1	90
Comm'l. ³	Thou	73.3	79.8	68.0	93	85	284.9	306.7	108
Live Wt/Hd									
Fed. Insp.	Lbs	276	261	279	101	107	271	259	95
Other	Lbs	412	409	411	100	101	404	406	100
Comm'l.	Lbs	278	263	281	101	107	273	261	95
Hogs No.									
Fed. Insp.	Thou	9,910.5	9,574.1	9,353.3	94	98	39,261.6	37,612.8	96
Other	Thou	85.5	78.7	77.7	91	99	335.2	306.6	91
Comm'l. ³	Thou	9,996.0	9,652.8	9,431.1	94	98	39,596.7	37,919.4	96
Live Wt/Hd									
Fed. Insp.	Lbs	270	272	272	101	100	271	272	100
Other	Lbs	244	243	238	98	98	244	241	99
Comm'l.	Lbs	269	272	272	101	100	271	272	100
Sheep&Lambs No.									
Fed. Insp.	Thou	207.1	209.7	212.8	103	101	829.6	770.0	93
Other	Thou	14.1	12.3	16.3	115	132	47.0	50.7	108
Comm'l. ³	Thou	221.2	222.0	229.1	104	103	876.6	820.7	94
Live Wt/Hd									
Fed. Insp.	Lbs	141	146	138	98	95	142	143	101
Other	Lbs	99	104	93	94	90	100	99	99
Comm'l.	Lbs	138	143	135	97	94	140	140	100
Goats No.									
Fed. Insp.	Thou	52.0	55.7	55.2	106	99	205.0	203.1	99
Other	Thou	15.3	14.5	12.3	80	85	57.7	52.6	91
Comm'l. ³	Thou	67.3	70.2	67.5	100	96	262.7	255.6	97
Live Wt/Hd									
Fed. Insp.	Lbs	62	62	60	98	97	62	61	99
Other	Lbs	81	69	70	87	102	70	70	101
Comm'l.	Lbs	66	63	62	94	98	64	63	99
Bison No.									
Fed. Insp.	Thou	4.9	4.7	4.4	90	95	19.4	17.7	91
Other	Thou	1.4	1.2	1.4	100	111	5.8	5.5	95
Comm'l. ³	Thou	6.3	5.9	5.8	92	98	25.2	23.2	92

* Revised.

¹ Excludes slaughter on farms.

² Accumulated totals and percentages based on unrounded data.

³ Totals may not equal sum of the parts due to rounding.

Commercial Red Meat Production: By State and United States ¹

State	Apr 2008	Mar 2009	Apr 2009	Apr 09 as % of ²	
				Apr 2008	Mar 2009
	<i>Million Pounds</i>	<i>Million Pounds</i>	<i>Million Pounds</i>	<i>Percent</i>	<i>Percent</i>
AL	2.4	2.1	2.0	86	97
AK					
AZ	36.8	31.2	30.6	83	98
AR	4.8	4.5	4.3	89	95
CA	142.7	143.8	139.1	97	97
CO	179.9	169.4	169.7	94	100
DE-MD	3.0	3.5	3.1	101	87
FL	8.0	8.1	8.5	106	105
GA	13.0	9.4	12.0	92	128
HI	0.9	0.9	0.8	90	89
ID	18.9	19.3	19.2	102	99
IL	261.8	238.6	240.5	92	101
IN	139.6	145.6	144.0	103	99
IA	612.1	586.7	576.7	94	98
KS	449.5	425.3	443.9	99	104
KY	50.1	48.5	46.7	93	96
LA	0.6	0.7	0.6	92	83
MI	44.1	43.6	43.1	98	99
MN	212.7	215.0	205.5	97	96
MS	1.3	1.4	1.1	89	85
MO	146.0	154.2	148.9	102	97
MT	1.8	1.0	0.9	49	92
NE	622.4	596.4	580.8	93	97
NV	0.1	0.1	0.1	63	82
N ENG ³	1.0	1.2	1.2	120	100
NJ	4.4	4.1	4.2	94	101
NM	0.5	0.4	0.4	91	105
NY	2.9	2.9	2.5	86	89
NC	224.8	218.5	215.6	96	99
ND	2.5	2.5	2.6	103	104
OH	25.8	25.7	24.6	95	96
OK	100.5	90.2	102.0	101	113
OR	5.0	4.7	4.5	90	96
PA	114.6	*106.3	106.4	93	100
SC	22.1	19.3	19.8	90	103
SD	90.1	98.6	80.4	89	82
TN	16.9	18.7	15.8	93	84
TX	460.1	433.6	432.0	94	100
UT	40.4	41.9	35.5	88	85
VA	46.1	39.2	36.9	80	94
WA	63.3	70.4	64.8	102	92
WV	0.4	0.6	0.5	124	91
WI	123.7	113.1	111.5	90	99
WY	0.5	0.5	0.5	108	106
US	4,298.2	*4,141.6	4,083.9	95	99

* Revised.

¹ Includes total beef, veal, pork, lamb, and mutton.

² Percentages based on unrounded data.

³ N ENG includes CT, ME, MA, NH, RI, and VT.

**Commercial Cattle Slaughter: By State and United States,
April 2008 and 2009 ¹**

State	Number Slaughtered		Total Live Weight		Average Live Weight	
	2008	2009	2008	2009	2008	2009
	<i>1,000 Head</i>	<i>1,000 Head</i>	<i>1,000 Pounds</i>	<i>1,000 Pounds</i>	<i>Pounds</i>	<i>Pounds</i>
AL	0.7	0.8	626	732	956	915
AK						
AZ	46.2	41.7	64,708	54,154	1,405	1,303
AR	0.8	0.9	856	839	1,021	984
CA	136.1	131.9	174,522	170,774	1,302	1,314
CO	217.6	199.5	274,276	259,536	1,261	1,302
DE-MD	3.3	3.4	4,392	4,468	1,316	1,314
FL						
GA		21.9		21,418		984
HI	1.0	0.9	1,116	1,060	1,137	1,122
ID	24.0	26.3	30,298	33,412	1,281	1,290
IL						
IN	3.5	3.7	3,678	3,878	1,052	1,054
IA						
KS	562.7	548.6	695,244	686,722	1,236	1,252
KY	1.6	1.9	1,512	1,834	965	957
LA	0.6	0.6	517	497	815	769
MI	51.9	50.1	69,985	67,761	1,357	1,358
MN	69.2	63.0	96,655	88,178	1,408	1,409
MS	0.1		72		814	
MO	7.7	8.1	9,200	9,696	1,195	1,205
MT	2.4	1.1	2,659	1,373	1,115	1,205
NE	610.3	548.1	784,258	727,992	1,287	1,330
NV	0.2	0.1	170	98	1,007	970
N ENG ²	1.0	1.1	1,108	1,172	1,147	1,079
NJ	2.6	2.8	3,012	3,194	1,163	1,147
NM	0.5	0.6	489	600	1,058	1,099
NY	2.4	2.3	2,873	2,770	1,200	1,213
NC	19.1	18.7	21,876	21,546	1,152	1,157
ND	1.3	1.2	1,587	1,560	1,221	1,256
OH	9.9	8.5	11,722	10,246	1,190	1,215
OK	2.4	2.5	2,840	2,875	1,162	1,157
OR	2.9	2.8	3,514	3,364	1,235	1,243
PA	86.3	78.0	108,890	97,385	1,272	1,263
SC	13.3	12.1	14,994	13,348	1,131	1,120
SD						
TN	2.5	3.1	2,120	2,673	874	877
TX	606.8	564.9	733,256	691,642	1,212	1,227
UT	50.1		64,495		1,290	
VA	1.0	1.0	973	1,085	1,020	1,078
WA	81.5	83.6	102,949	105,839	1,270	1,271
WV	0.6	0.7	674	708	1,148	1,073
WI	143.7	133.1	191,649	176,972	1,349	1,344
WY	0.5	0.7	663	773	1,242	1,128
US ³	2,961.1	2,772.1	3,716,023	3,525,518	1,259	1,276

¹ Includes slaughter under Federal inspection and other Commercial slaughter, excludes farm slaughter.

² N ENG includes CT, ME, MA, NH, RI, and VT.

³ States with no data printed are still included in the US total, data not printed to avoid disclosing individual operations. Accumulated totals and percentages based on unrounded data.

**Commercial Calf Slaughter: By State and United States,
April 2008 and 2009 ¹**

State	Number Slaughtered		Total Live Weight		Average Live Weight	
	2008	2009	2008	2009	2008	2009
	<i>1,000 Head</i>	<i>1,000 Head</i>	<i>1,000 Pounds</i>	<i>1,000 Pounds</i>	<i>Pounds</i>	<i>Pounds</i>
AL						
AK						
AZ						
AR						
CA	14.5	16.0	1,760	1,800	123	114
CO						
DE-MD	0.2	0.2	51	61	275	286
FL	0.1		22		446	
GA	0.1	0.1	31	42	460	458
HI						
ID						
IL	3.9	3.2	1,266	1,312	324	410
IN						
IA						
KS						
KY						
LA	0.3	0.3	162	133	529	530
MI	1.8	1.5	760	675	423	445
MN		0.1		42		463
MS						
MO	0.1	0.1	26	25	389	398
MT						
NE						
NV						
N ENG ²	0.2	2.6	69	257	337	99
NJ	6.5	5.6	2,726	2,342	417	418
NM	1.4		142		100	
NY	16.0	10.3	1,664	1,040	108	104
NC	0.1	0.1	65	52	487	491
ND						
OH	0.1	4.7	32	2,221	350	479
OK						
OR						
PA	14.0	10.7	5,760	4,523	411	424
SC						
SD						
TN	0.1	0.1	33	39	442	475
TX	1.3	2.4	733	505	572	211
UT						
VA						
WA						
WV						
WI						
WY						
US ³	73.3	68.0	20,133	18,883	278	281

¹ Includes slaughter under Federal inspection and other Commercial slaughter, excludes farm slaughter.

² N ENG includes CT, ME, MA, NH, RI, and VT.

³ States with no data printed are still included in the US total, data not printed to avoid disclosing individual operations. Accumulated totals and percentages based on unrounded data.

**Commercial Hog Slaughter: By State and United States,
April 2008 and 2009 ¹**

State	Number Slaughtered		Total Live Weight		Average Live Weight	
	2008	2009	2008	2009	2008	2009
	<i>1,000 Head</i>	<i>1,000 Head</i>	<i>1,000 Pounds</i>	<i>1,000 Pounds</i>	<i>Pounds</i>	<i>Pounds</i>
AL	8.3	6.8	3,621	2,896	436	427
AK						
AZ	0.5	0.2	109	47	236	244
AR	14.6	12.7	6,627	5,779	455	455
CA	218.8	216.2	53,018	52,913	243	245
CO	0.6	0.7	167	182	259	258
DE-MD	1.0	0.9	242	223	249	241
FL	6.6	6.2	1,001	1,088	152	175
GA	9.9	6.3	2,203	1,584	223	251
HI	1.6	1.2	351	282	226	227
ID	13.2	10.3	3,409	2,627	259	257
IL	947.5	812.6	262,564	229,495	277	283
IN	691.8	700.3	181,199	186,967	262	267
IA	2,805.1	2,658.1	752,860	719,600	269	271
KS						
KY						
LA	1.3	1.3	269	238	211	179
MI	9.0	9.2	3,463	3,498	387	381
MN	824.9	795.0	213,467	209,451	260	264
MS	5.7	5.1	1,773	1,614	310	315
MO	676.5	686.9	186,368	190,200	276	277
MT	1.2	0.6	355	153	299	249
NE	691.8	649.9	184,919	175,632	267	270
NV						
N ENG ²	1.2	1.3	268	270	229	214
NJ	8.3	7.8	842	752	102	97
NM	0.1	0.1	24	17	241	251
NY	2.0	1.9	389	353	200	188
NC	1,078.3	1,019.7	283,378	270,229	263	265
ND	9.3	9.3	2,360	2,424	255	260
OH	98.0	87.5	26,624	24,136	273	277
OK	464.7	473.9	130,369	131,722	281	278
OR	15.9	13.3	4,067	3,400	257	256
PA	250.1	242.5	63,736	62,250	255	257
SC						
SD	423.7	365.5	107,515	95,730	254	262
TN	48.4	46.5	23,309	21,195	482	458
TX	37.2	36.7	8,543	8,982	230	245
UT	5.6	4.1	1,158	810	208	199
VA	225.8	177.7	59,647	47,722	264	269
WA	2.5	2.2	489	522	199	234
WV	0.6	0.5	148	116	263	253
WI	57.1	46.5	25,644	20,491	458	447
WY	0.4	0.3	118	88	291	260
US ³	9,996.0	9,431.1	2,690,357	2,564,114	269	272

¹ Includes slaughter under Federal inspection and other Commercial slaughter, excludes farm slaughter.

² N ENG includes CT, ME, MA, NH, RI, and VT.

³ States with no data printed are still included in the US total, data not printed to avoid disclosing individual operations. Accumulated totals and percentages based on unrounded data.

**Commercial Sheep and Lamb Slaughter: By State and United States,
April 2008 and 2009¹**

State	Number Slaughtered		Total Live Weight		Average Live Weight	
	2008	2009	2008	2009	2008	2009
	<i>1,000 Head</i>	<i>1,000 Head</i>	<i>1,000 Pounds</i>	<i>1,000 Pounds</i>	<i>Pounds</i>	<i>Pounds</i>
AL						
AK						
AZ	0.1	0.2	15	27	122	136
AR		0.1		6		116
CA						
CO	82.3	83.8	13,709	13,715	167	164
DE-MD	3.6	3.8	357	365	98	97
FL	0.3	0.4	19	19	60	51
GA	0.5	0.4	50	33	108	85
HI		0.1		8		142
ID	0.2	0.2	24	27	127	135
IL						
IN	3.2	4.4	333	452	105	103
IA	25.1	29.2	3,963	4,651	158	159
KS	0.2	0.3	21	29	122	101
KY	0.8	1.0	106	126	127	126
LA	0.3	0.4	21	22	68	55
MI	15.5	16.3	2,012	2,115	131	130
MN	1.1	1.8	160	245	147	138
MS		0.1		4		40
MO	0.5	0.4	60	53	129	126
MT	0.3	0.2	28	18	106	101
NE	0.1	0.1	14	9	141	152
NV		0.1		11		136
N ENG ²	2.9	5.1	259	414	89	82
NJ	15.8	16.5	1,223	1,207	77	73
NM	1.4	1.3	204	189	143	150
NY	4.7	5.6	320	421	69	75
NC	0.6	0.7	51	57	83	77
ND		0.1		10		125
OH	1.3	1.9	131	207	103	109
OK	0.1	0.1	12	14	113	109
OR	1.8	1.9	261	262	144	142
PA	5.4	6.2	477	543	88	88
SC		0.2		17		82
SD	0.2	0.2	23	26	114	127
TN	1.1	1.1	84	74	76	69
TX	3.1	4.8	296	353	95	74
UT	3.0	3.1	408	434	137	140
VA	1.1	2.0	98	187	89	95
WA	0.6	0.5	89	90	152	173
WV						
WI	1.0	1.0	133	133	134	135
WY	0.1	0.1	22	11	156	164
US ³	221.2	229.1	30,572	30,822	138	135

¹ Includes slaughter under Federal inspection and other Commercial slaughter, excludes farm slaughter.

² N ENG includes CT, ME, MA, NH, RI, and VT.

³ States with no data printed are still included in the US total, data not printed to avoid disclosing individual operations. Accumulated totals and percentages based on unrounded data.

**Classification of Livestock Slaughtered Under Federal Inspection:
United States**

Item	Apr 2008	Mar 2009	Apr 2009	Jan - Apr ¹		Apr 2008	Mar 2009	Apr 2009	Jan - Apr ¹	
				2008	2009				2008	2009
	<i>1,000 Head</i>	<i>1,000 Head</i>	<i>1,000 Head</i>	<i>1,000 Head</i>	<i>1,000 Head</i>	<i>Percent of Total</i>	<i>Percent of Total</i>	<i>Percent of Total</i>	<i>Percent of Total</i>	<i>Percent of Total</i>
Class ²										
Cattle										
Steers	1,495	1,312	1,386	5,486	5,169	51.3	49.0	50.9	49.7	49.0
Heifers	865	832	819	3,388	3,196	29.7	31.0	30.1	30.7	30.3
All Cows	501	491	471	1,984	2,016	17.2	18.3	17.3	18.0	19.1
Dairy Cows	219	238	215	884	978	7.5	8.9	7.9	8.0	9.3
Other Cows	282	253	256	1,100	1,038	9.7	9.4	9.4	10.0	9.8
Bulls	52	45	48	184	171	1.8	1.7	1.8	1.7	1.6
Total ¹	2,914	2,681	2,724	11,043	10,552	100.0	100.0	100.0	100.0	100.0
Calves & Vealers	72	79	67	280	303	100.0	100.0	100.0	100.0	100.0
Hogs										
Barrow & Gilts	9,559	9,273	9,054	37,920	36,440	96.4	96.9	96.8	96.6	96.9
Sows	310	267	262	1,183	1,034	3.1	2.8	2.8	3.0	2.7
Boars	42	34	37	158	140	0.4	0.4	0.4	0.4	0.4
Total ¹	9,910	9,574	9,353	39,262	37,613	100.0	100.0	100.0	100.0	100.0
Sheep										
Mature Sheep	10	10	10	38	36	5.0	4.7	4.6	4.6	4.7
Lambs & Yrlngs	197	200	203	792	734	95.0	95.3	95.4	95.4	95.3
Total ¹	207	210	213	830	770	100.0	100.0	100.0	100.0	100.0
Average Dressed Weight										
	<i>Pounds</i>	<i>Pounds</i>	<i>Pounds</i>	<i>Pounds</i>	<i>Pounds</i>					
Cattle										
Steers ³	766	791	774	773	785					
Heifers ³	817	848	829	826	845					
All Cows ³	753	790	767	766	786					
Bulls ³	621	*628	613	626	620					
Bulls ³	893	881	884	888	879					
Calves & Vealers	164	154	165	161	152					
Hogs										
Barrow Gilts ⁴	202	204	204	203	204					
Sows ⁴	199	202	202	200	202					
Boars ⁴	307	302	305	307	303					
Boars ⁴	205	199	200	209	199					
Sheep										
Mature Sheep ⁵	71	73	69	71	71					
Lamb & Yrlngs ⁵	67	68	67	67	67					
Lamb & Yrlngs ⁵	71	73	69	71	72					

* Revised.

¹ Total and percentages based on unrounded data.

² Species totals and classification reported by food inspectors, Inspection Operations, FSIS.

³ Included in cattle average dressed weight.

⁴ Included in hog average dressed weight.

⁵ Included in sheep average dressed weight.

**Federally Inspected Slaughter: By Region and United States,
April 2009¹**

Standard Federal Regions	Cattle							Calves
	Total ²	Steers	Heifers	Cows			Bulls	Total
				All	Dairy	Other		
	<i>1,000 Head</i>	<i>1,000 Head</i>	<i>1,000 Head</i>	<i>1,000 Head</i>	<i>1,000 Head</i>	<i>1,000 Head</i>	<i>1,000 Head</i>	<i>1,000 Head</i>
1	0.9	0.4	0.2					2.6
2	5.0	1.6	0.3	2.7	2.3	0.4	0.4	15.9
3	80.6	34.7	6.7	37.5	29.9	7.7	1.6	11.0
4	68.9	1.6	0.6	56.6	12.1	44.5	10.0	0.3
5	326.0	152.1	43.9	121.6	68.6	53.0	8.4	17.9
6	562.8	299.8	176.1	76.0	16.6	59.4	10.9	2.3
7	1,138.2	640.1	433.0	58.2	1.3	56.9	7.0	
8	256.1	127.9	110.2					
9	174.0	90.8	10.7	69.1	58.8	10.3	3.4	15.9
10	111.9	37.3	37.3	33.0	19.0	14.1	4.3	
US ²	2,724.4	1,386.3	819.0	471.3	215.1	256.2	47.8	67.1
	Hogs				Sheep			
	Total ²	Barrows & Gilts	Sows	Boars	Total ²	Mature Sheep	Lambs & Yearlings	
	<i>1,000 Head</i>	<i>1,000 Head</i>	<i>1,000 Head</i>	<i>1,000 Head</i>	<i>1,000 Head</i>	<i>1,000 Head</i>	<i>1,000 Head</i>	<i>1,000 Head</i>
1	1.1	1.0			4.6	0.4	4.2	
2	9.4	9.2	0.1	0.1	21.5	1.3	20.2	
3	420.1	408.0	1.2	10.8	12.4	0.8	11.6	
4	1,363.2	1,297.4	64.2	1.6	3.7	1.1	2.6	
5	2,421.2	2,301.6	115.6	3.9	28.7	2.6	26.1	
6	512.7	493.3	19.3	0.1				
7	4,011.6	3,929.6	61.4	20.6	29.7	0.4	29.3	
8	377.2	376.9	0.2		86.5	1.9	84.6	
9	211.7	211.6	0.1					
10	25.2	25.1	0.1		1.9	0.2	1.7	
US ²	9,353.3	9,053.9	262.2	37.3	212.8	9.9	202.9	

¹ States included in regions are as follows: 1- CT, ME, NH, VT, MA, & RI; 2- NY & NJ; 3- DE-MD, PA, WV, & VA; 4- AL, FL, GA, KY, MS, NC, SC, & TN; 5- IL, IN, MI, MN, OH, & WI; 6- AR, LA, NM, OK, & TX; 7- IA, KS, MO, & NE; 8- CO, MT, ND, SD, UT, & WY; 9- AZ, CA, HI & NV; 10- AK, ID, OR, & WA.

² Regions with no data printed are still included in the US and Region total, data not printed to avoid disclosing individual operations. Totals may not add due to rounding.

**Federally Inspected Slaughter: By Region and United States,
January - April 2009 ¹**

Standard Federal Regions	Cattle							Calves
	Total ²	Steers	Heifers	Cows			Bulls	Total
				All	Dairy	Other		
	<i>1,000 Head</i>	<i>1,000 Head</i>	<i>1,000 Head</i>	<i>1,000 Head</i>	<i>1,000 Head</i>	<i>1,000 Head</i>	<i>1,000 Head</i>	<i>1,000 Head</i>
1	3.9	1.7	0.8					8.4
2	20.0	6.7	1.2	10.7	9.1	1.6	1.5	77.8
3	315.3	124.7	28.3	157.4	125.3	32.0	5.0	45.2
4	260.6	6.6	2.3	216.3	53.0	163.3	35.5	1.4
5	1,301.5	548.9	176.0	546.4	298.7	247.7	30.2	72.6
6	2,154.9	1,113.2	660.3	339.6	87.4	252.2	41.8	12.0
7	4,320.3	2,366.6	1,698.4	228.8	7.2	221.6	26.6	
8	1,010.6	494.8	444.5					
9	715.6	345.8	42.4	316.7	285.1	31.7	10.7	81.0
10	449.5	160.6	141.6	134.5	85.0	49.5	12.8	
US ²	10,552.1	5,169.4	3,195.6	2,015.8	977.6	1,038.2	171.3	302.5
	Hogs				Sheep			
	Total ²	Barrows & Gilts	Sows	Boars	Total ²	Mature Sheep	Lambs & Yearlings	
	<i>1,000 Head</i>	<i>1,000 Head</i>	<i>1,000 Head</i>	<i>1,000 Head</i>	<i>1,000 Head</i>	<i>1,000 Head</i>	<i>1,000 Head</i>	
1	3.8	3.7	0.1	0.1	11.1	1.0	10.1	
2	38.4	37.6	0.4	0.4	53.7	4.7	48.9	
3	1,706.4	1,663.0	5.2	38.1	37.1	1.8	35.4	
4	5,454.7	5,156.5	291.3	6.9	12.8	3.6	9.1	
5	9,674.3	9,236.1	423.7	14.5	98.1	10.8	87.3	
6	1,925.8	1,839.8	85.0	1.0				
7	16,111.8	15,807.2	226.3	78.4	120.7	1.2	119.5	
8	1,744.6	1,743.6	1.1		338.0	7.2	330.8	
9	853.9	853.5	0.3	0.1				
10	99.0	98.7	0.3		7.3	0.6	6.7	
US ²	37,612.8	36,439.6	1,033.6	139.5	770.0	36.4	733.6	

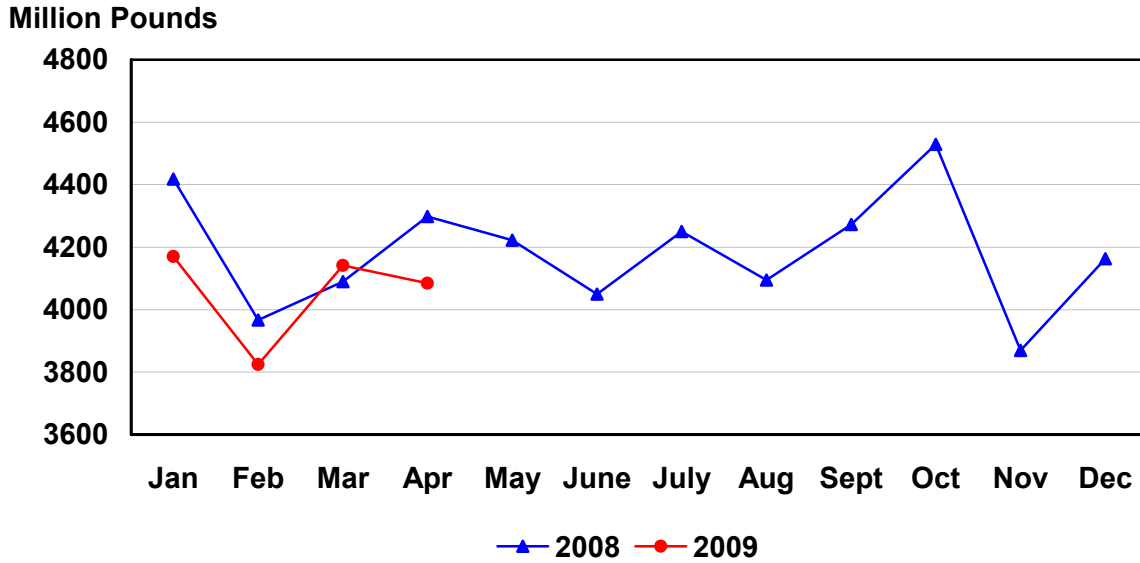
¹ States included in regions are as follows: 1- CT, ME, NH, VT, MA, & RI; 2- NY & NJ; 3- DE-MD, PA, WV, & VA; 4- AL, FL, GA, KY, MS, NC, SC, & TN; 5- IL, IN, MI, MN, OH, & WI; 6- AR, LA, NM, OK, & TX; 7- IA, KS, MO, & NE; 8- CO, MT, ND, SD, UT, & WY; 9- AZ, CA, HI & NV; 10- AK, ID, OR, & WA.

² Regions with no data printed are still included in the US and Region total, data not printed to avoid disclosing individual operations. Totals may not add due to rounding.

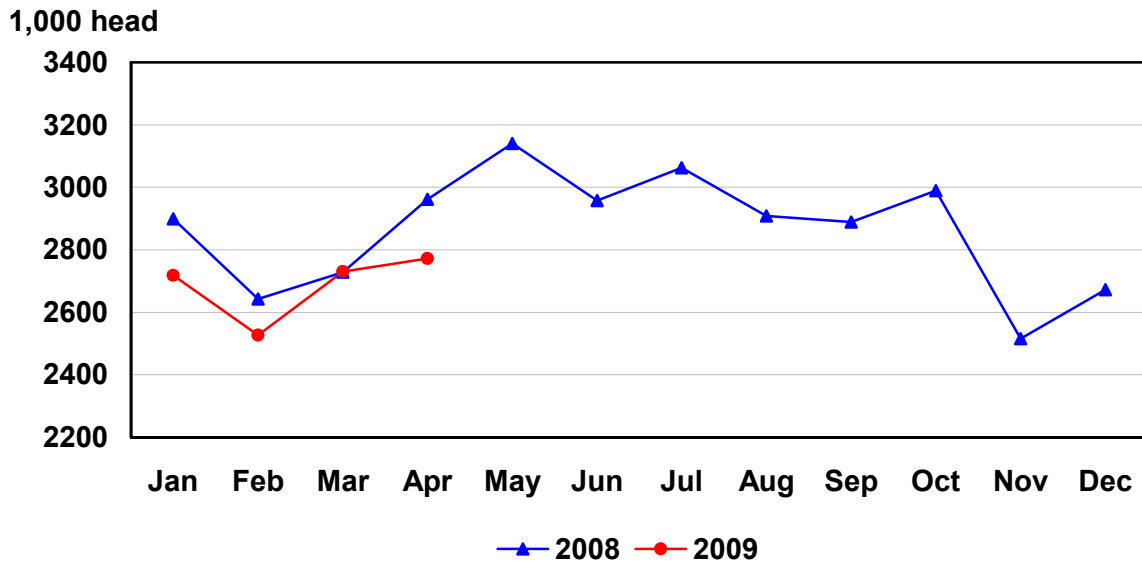
Federally Inspected Slaughter: Percent of Total Commercial Slaughter by Species, United States

Species	Apr 2008	Mar 2009	Apr 2009	Jan - Apr	
				2008	2009
	<i>Percent</i>	<i>Percent</i>	<i>Percent</i>	<i>Percent</i>	<i>Percent</i>
Cattle	98.4	98.2	98.3	98.3	98.2
Calves	98.5	98.7	98.7	98.4	98.7
Hogs	99.1	99.2	99.2	99.2	99.2
Sheep	93.6	94.4	92.9	94.6	93.8

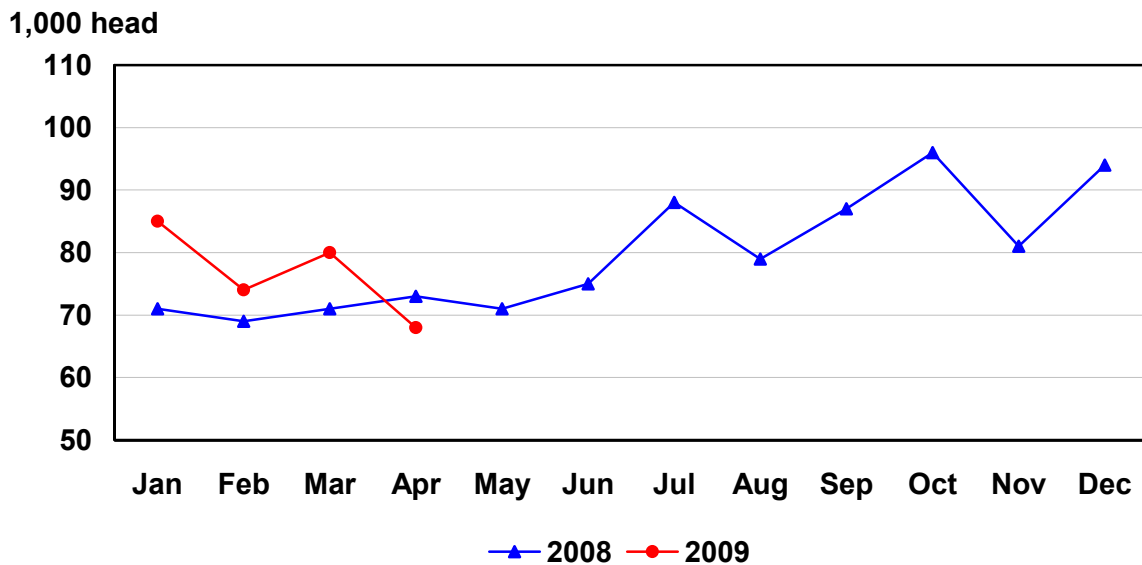
U.S. Monthly Commercial Red Meat Production



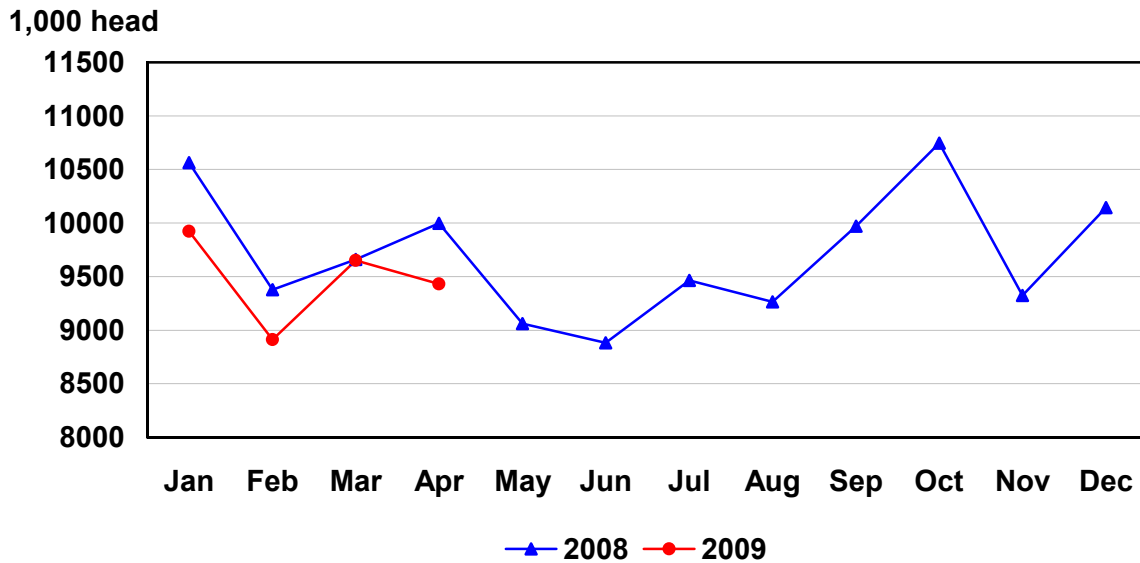
U.S. Monthly Commercial Slaughter Cattle



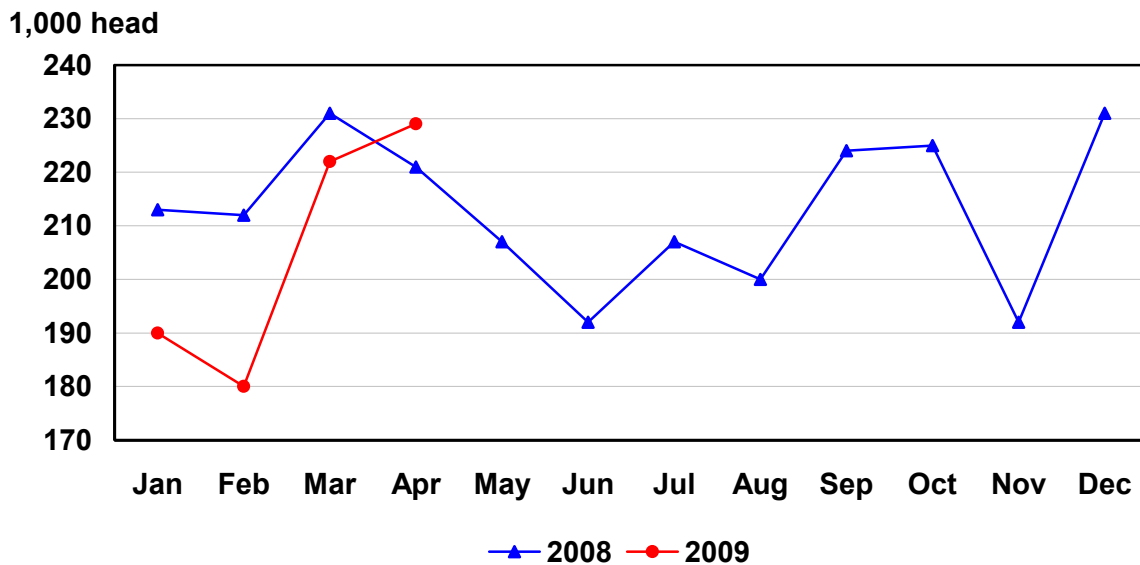
U.S. Monthly Commercial Slaughter Calves



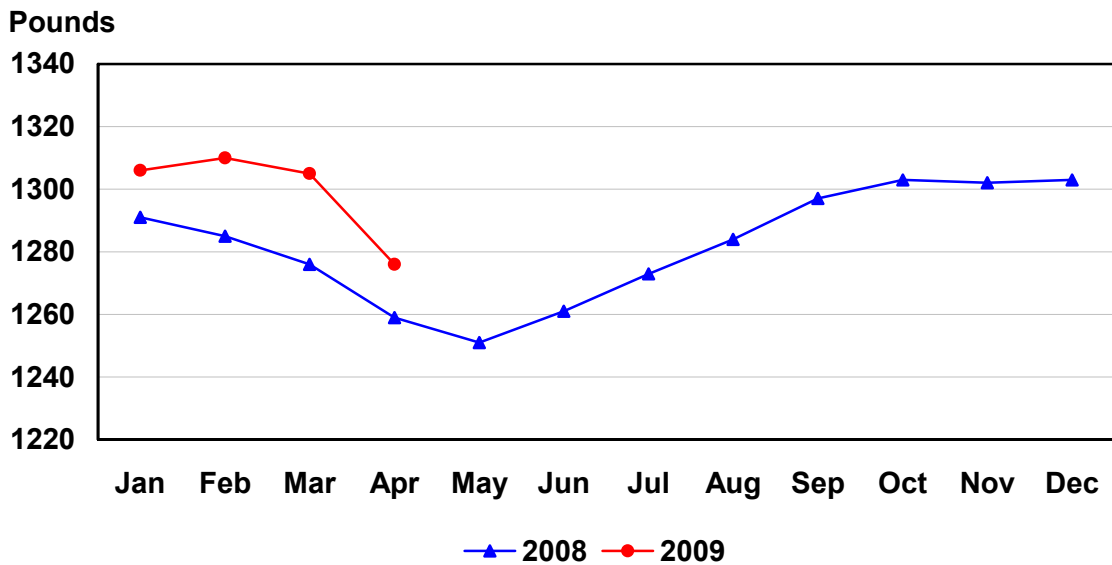
U.S. Monthly Commercial Slaughter Hogs



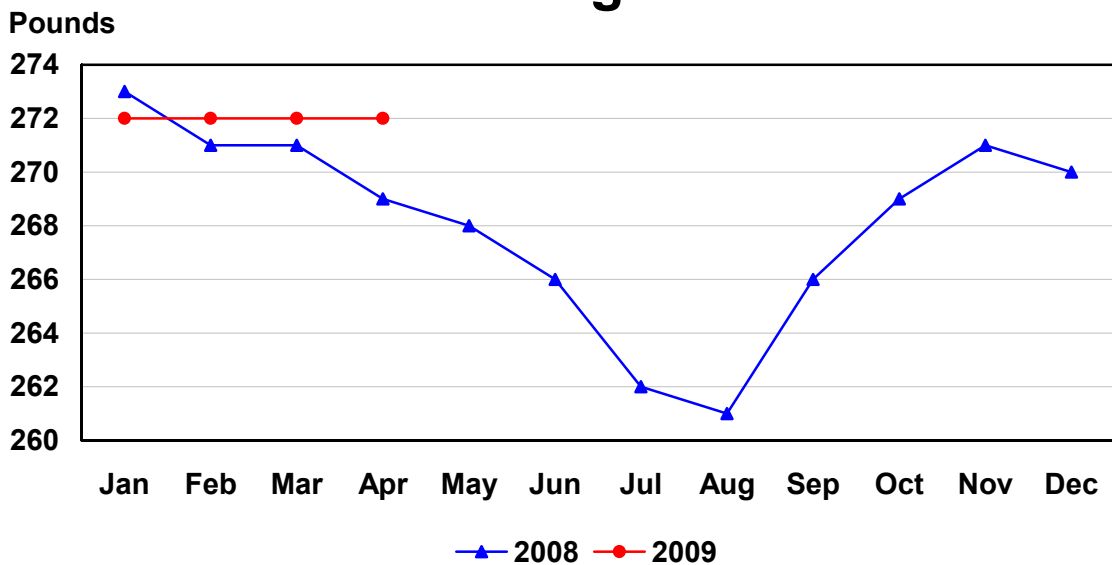
U.S. Monthly Commercial Slaughter Sheep



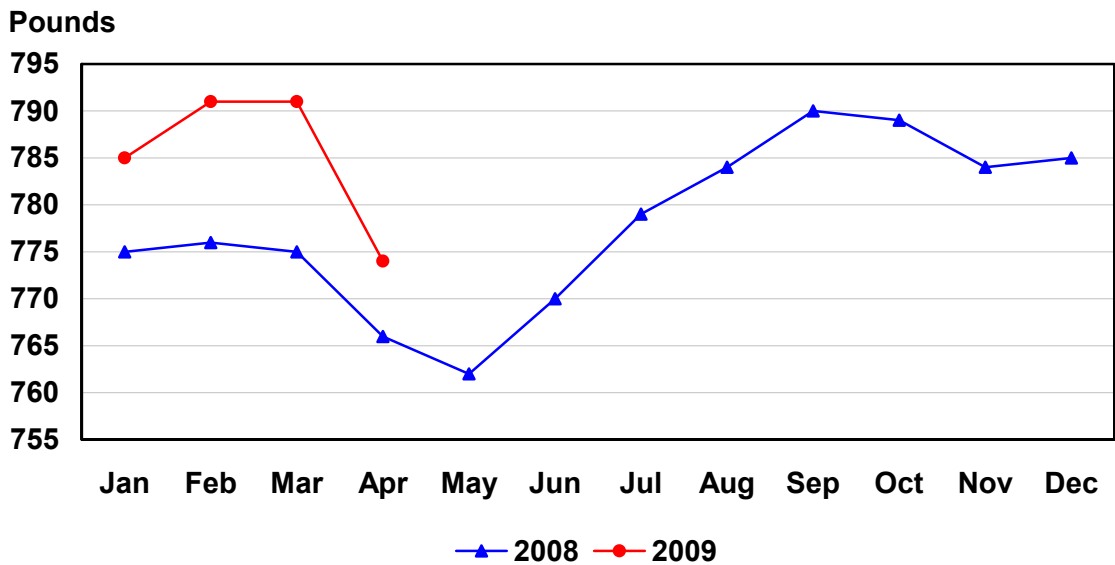
U.S. Monthly Commercial Slaughter Average Live Weight Cattle



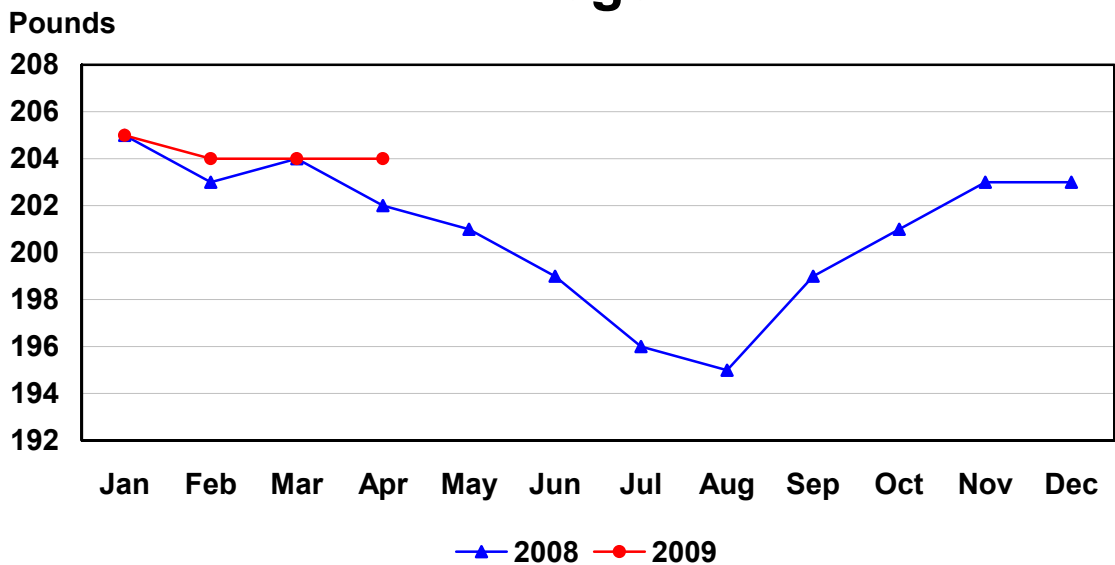
U.S. Monthly Commercial Slaughter Average Live Weight Hogs



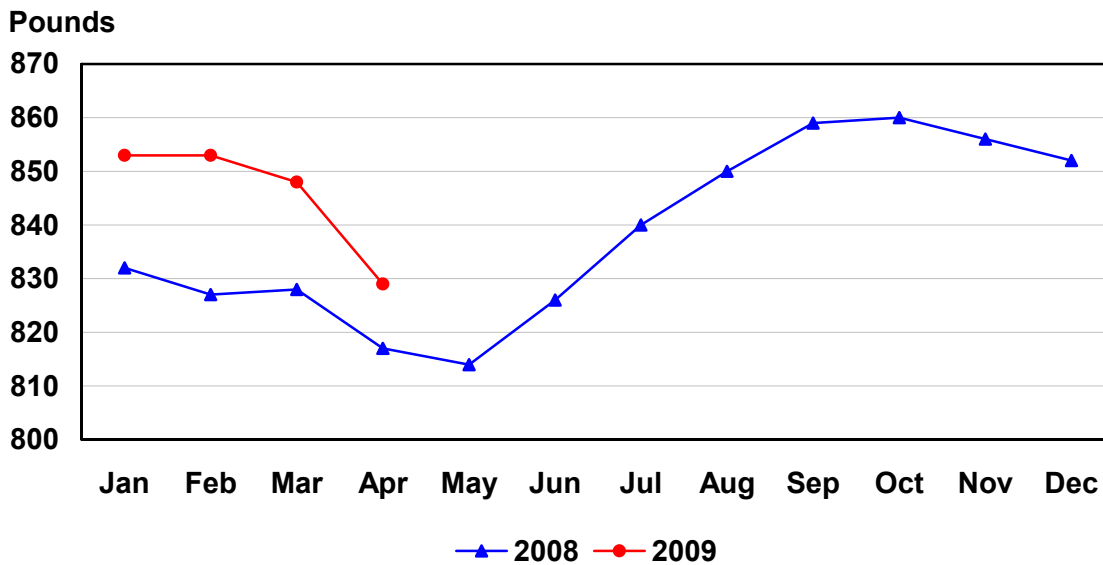
U.S. Monthly Federally Inspected Average Dressed Weight Cattle



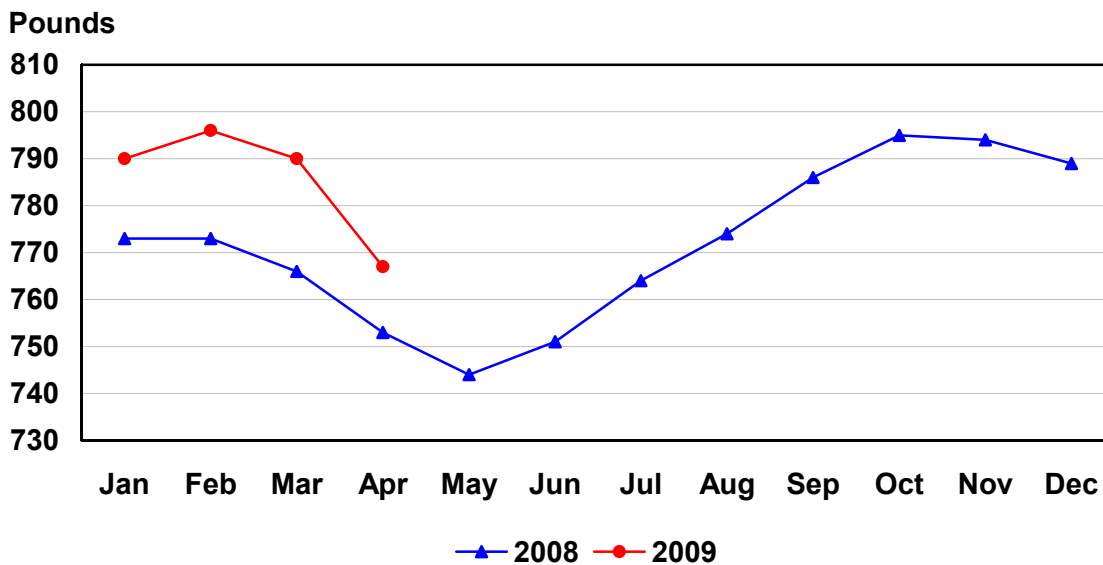
U.S. Monthly Federally Inspected Average Dressed Weight Hogs



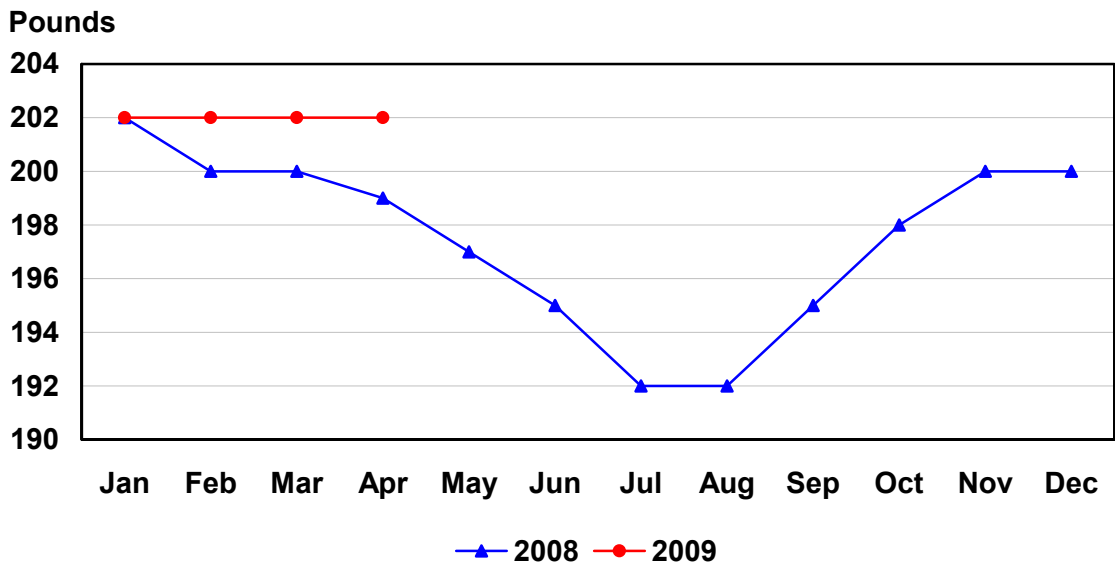
U.S. Monthly Federally Inspected Average Dressed Weight Steers



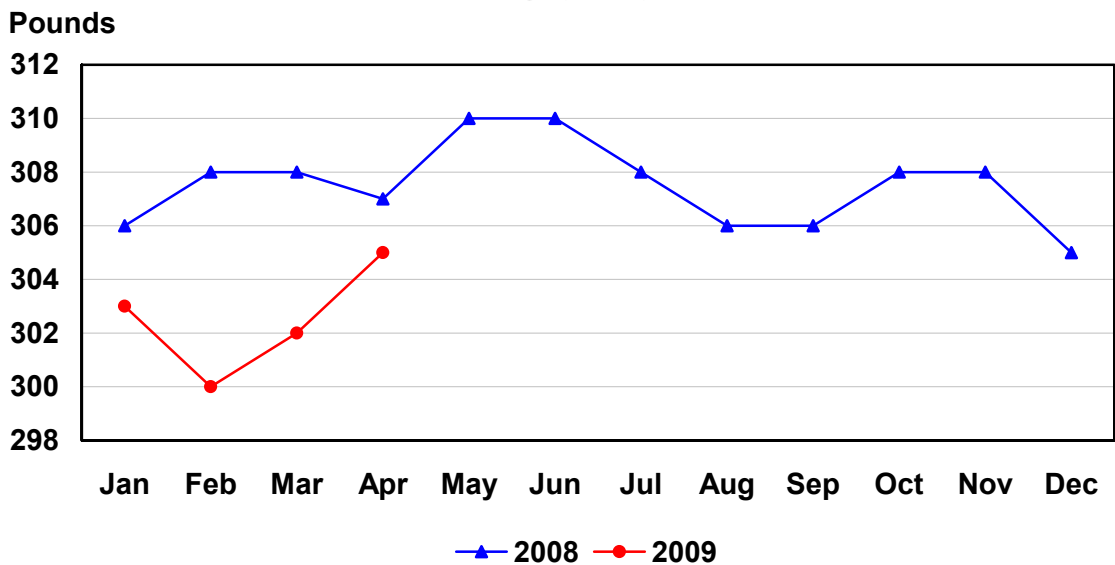
U.S. Monthly Federally Inspected Average Dressed Weight Heifers



U.S. Monthly Federally Inspected Average Dressed Weight Barrows and Gilts



U.S. Monthly Federally Inspected Average Dressed Weight Sows



Reliability of Livestock Slaughter Estimates

Data Sources: Primary data for the commercial livestock slaughter estimates are obtained from electronic reports completed by inspectors from the Food Safety and Inspection Service (FSIS), USDA, which provide daily counts of animals slaughtered in Federally Inspected (FI) plants, in addition to total live and dressed weights. These counts are combined with data from State-administered Non-Federally Inspected (NFI) slaughter plants to derive total commercial slaughter estimates. More than 95 percent of the total U.S. slaughter for any species is under Federal Inspection.

There are nearly 800 livestock slaughter plants in the U.S. operating under Federal Inspection and over 2,000 Non-Federally Inspected (State-inspected or custom-exempt) slaughter plants. Slaughter from State-inspected Talmedge-Aiken plants is included in FI totals (see Types of Plants, page 18). To prevent duplication in reporting between FI and NFI plants and assure all FI plants are included, certificates prepared by FSIS identifying operating status are constantly monitored

Revision Policy: Number of head slaughtered, live weights, and dressed weights are subject to revision the following month after the monthly release. Annual totals are published in the slaughter summary each March which includes any revisions made to current and previous year's published data. Revisions are generally the result of late reports received from slaughter plants and are usually less than one-half of one percent. No revisions will be made to the previous year's data after the publication of the annual summary in March.

Procedures and Reliability: The livestock slaughter data is obtained electronically on a daily basis and summarized approximately two weeks after the week of slaughter. An edit compares each plant's data with the historical data for that plant. Data are checked for unusual values for head kill, patterns of kill, average weights, and dressing percent, based on each plant's past operating profile. In addition, the edit provides a listing of missing reports for follow-up contact with FSIS. Average live and dressed weights and dressing percentages by State are compared with the previous weeks as an additional check. Fluctuations are frequently the result of plants permanently or temporarily closing and a shift in the species reported.

The FSIS District Veterinary Medical Specialists (DVMS) are contacted by e-mail or telephone for missing or potentially erroneous slaughter data. This assures that plants slaughtering a large number of head or several species are accounted for each week. Any corrections FSIS makes to the slaughter data are included in the summary.

Imputation may be necessary for incomplete reports. The imputation of live and dressed weights is based on the current week reported data of plants of similar size and location. Imputation for live and dressed weight data for cattle and hogs is less than 10 percent and 7 percent, respectively. The imputation for calves and sheep is more frequent and variable. If no data is received electronically or by other means, for plants slaughtering fewer than 50 total head weekly of only one species, data are imputed. The imputation of head for any plant is based on the historical data for that particular plant. The imputation of head slaughtered is rare but when necessary, the imputed head kill for missing plants usually is less than 1 percent of the U.S. head kill totals.

FI data are summarized weekly and accumulated to a monthly total for this release. These weekly totals are published by USDA's Agricultural Marketing Service (AMS) in **Livestock, Meat, Wool Market News**, Weekly Summary, and Statistics and are also available on the NASS website. NFI data are summarized monthly only.

Livestock slaughter estimates are based on a census of operating plants and therefore, have no sampling error. However, they may be subject to errors such as omissions, duplications and mistakes in reporting, recording and processing the data. These errors are minimized through rigid quality controls in the edit and summarization process, and a careful review of all reported data for consistency and reasonableness.

No data are published when an individual plant's data could be divulged. If not published, these data are still included in US and region totals. A review of the data is made annually to determine the publishable data.

Types of Livestock Slaughter Plants

There are generally **four types** of slaughtering plants.

- (1) **Federally Inspected (FI) Plants:** Plants that transport meat interstate must employ federal inspectors to assure compliance with USDA standards. Any State whose commercial plants operate entirely under federal inspection may still have custom-exempt establishments for which NFI estimates are made.
- (2) **Talmedge-Aiken (TA) Plants:** Slaughter plants in which USDA is responsible for inspection. However, federal inspection is carried out by State employees. These plants are considered to be federally inspected.
- (3) **Non-Federally Inspected (NFI) Plants:** Plants which sell and transport only intrastate. State inspectors assure compliance with individual State standards for these NFI plants. Mobile slaughtering units are excluded and are considered farm slaughter.
- (4) **Custom-Exempt Plants:** Plants that do not sell meat but operate on a custom basis only are custom-exempt. The animals and meat are not inspected, but the facilities must meet health standards. These are considered NFI plants and head kill is included in NFI totals.

Terms and Definitions Used for Livestock Slaughter Estimates

Average Live Weight: Excludes post-mortem condemnations

Commercial Production: Includes slaughter and meat production in federally inspected and other plants, but excludes animals slaughtered on farms.

Dressed Weight: The weight of a chilled animal carcass. Beef with kidney knob in; veal with hide off; lamb and mutton with pluck out; pork with leaf fat and kidneys out, jowls on and head off.

Dressing Percent: Usually expressed as a percentage yield of chilled carcass in relation to the weight of the live animal on hoof. For example, a live hog that weighed 200 pounds on hoof and yielded a carcass weighing 140 pounds would have a dressing percentage of 70.

Food and Meat Inspection: Includes examination, checking, or testing of a carcass and/or meat against established government standards and involves checking the facility for cleanliness, health of animals, or parts of animals and quality of the meat produced.

Number of Head: Includes post-mortem condemnations.

Plant, Slaughter: An establishment where animals are killed and butchered.

Red Meat: Red meat production is the carcass weight after slaughter excluding condemnation and is comprised of beef, veal, pork, and lamb and mutton. The FI red meat production is equal to the total carcass weight after slaughter. The NFI meat production formula is (NFI head kill) X (live weight) X (FI dressing percentage) = NFI red meat production.

Slaughter: Killing and butchering of animals primarily for food.

Slaughter, Farm: Animals slaughtered on farms primarily for home consumption. Excludes custom slaughter for farmers at commercial establishments, but includes mobile slaughtering on farms. These estimates appear only in the annual slaughter release.

Total Live Weight: Excludes post-mortem condemnations.

Wholesome Meat Act: Legislation that specifies that all meat produced for sale in the U.S. must be inspected. Meat that is transported interstate must be inspected in compliance with Federal (USDA) Standards.

Information Contacts

Listed below are the commodity specialists in the Livestock Branch of the National Agricultural Statistics Service to contact for additional information.

Dan Kerestes, Chief, Livestock Branch.....	(202) 720-3570
Scott Hollis, Head, Livestock Section.....	(202) 690-2424
Jim Collom – Dairy Products.....	(202) 690-3236
Joe Gaynor – Dairy Products Prices.....	(202) 690-2168
Jason Hardegree – Cattle, Cattle on Feed.....	(202) 720-3040
Sherry Bertramsen – Livestock Slaughter.....	(515) 284-4340
Mike Miller – Milk Production and Milk Cows.....	(202) 720-3278
Everett Olbert – Sheep and Goats.....	(202) 720-4751
Nicholas Streff – Hogs and Pigs.....	(202) 720-3106

ACCESS TO REPORTS!!

For your convenience, there are several ways to obtain NASS reports, data products, and services:

INTERNET ACCESS

All NASS reports are available free of charge on the worldwide Internet. For access, connect to the Internet and go to the NASS Home Page at: www.nass.usda.gov.

E-MAIL SUBSCRIPTION

All NASS reports are available by subscription free of charge direct to your e-mail address. Starting with the NASS Home Page at www.nass.usda.gov, under the right navigation, *Receive reports by Email*, click on **National** or **State**. Follow the instructions on the screen.

PRINTED REPORTS OR DATA PRODUCTS

CALL OUR TOLL-FREE ORDER DESK: 800-999-6779 (U.S. and Canada)
Other areas, please call 703-605-6220 FAX: 703-605-6900
(Visa, MasterCard, check, or money order acceptable for payment.)

ASSISTANCE

For **assistance** with general agricultural statistics or further information about NASS or its products or services, contact the **Agricultural Statistics Hotline** at **800-727-9540**, 7:30 a.m. to 4:00 p.m. ET, or e-mail: nass@nass.usda.gov.

The U.S. Department of Agriculture (USDA) prohibits discrimination in all its programs and activities on the basis of race, color, national origin, age, disability, and where applicable, sex, marital status, familial status, parental status, religion, sexual orientation, genetic information, political beliefs, reprisal, or because all or part of an individual's income is derived from any public assistance program. (Not all prohibited bases apply to all programs.) Persons with disabilities who require alternative means for communication of program information (Braille, large print, audiotape, etc.) should contact USDA's TARGET Center at (202) 720-2600 (voice and TDD).

To file a complaint of discrimination, write to USDA, Director, Office of Civil Rights, 1400 Independence Avenue, S.W., Washington, D.C. 20250-9410, or call (800) 795-3272 (voice) or (202) 720-6382 (TDD). USDA is an equal opportunity provider and employer.