
Released June 26, 2009, by the National Agricultural Statistics Service (NASS), Agricultural Statistics Board, U.S. Department of Agriculture. For information on *Livestock Slaughter* call Sherry Bertramsen at (515) 284-4340, office hours 7:00 a.m. to 4:00 p.m. CT.

May Red Meat Production Down From Last Year

Commercial red meat production for the United States totaled 3.92 billion pounds in May, down 7 percent from the 4.22 billion pounds produced in May 2008.

Beef production, at 2.18 billion pounds, was 8 percent below the previous year. Cattle slaughter totaled 2.85 million head, down 9 percent from May 2008. The average live weight was up 13 pounds from the previous year, at 1,264 pounds.

Veal production totaled 10.3 million pounds, 11 percent below May a year ago. Calf slaughter totaled 65,100 head, down 8 percent from May 2008. The average live weight was down 7 pounds from last year, at 268 pounds.

Pork production totaled 1.72 billion pounds, down 5 percent from the previous year. Hog kill totaled 8.45 million head, down 7 percent from May 2008. The average live weight was up 3 pounds from the previous year, at 271 pounds.

Lamb and mutton production, at 13.0 million pounds, was down 13 percent from May 2008. Sheep slaughter totaled 184,700 head, 11 percent below last year. The average live weight was 141 pounds, down 5 pounds from May a year ago.

January to May 2009 commercial red meat production was 20.1 billion pounds, down 4 percent from 2008. Accumulated beef production was down 4 percent from last year, veal was down 1 percent, pork was down 4 percent from last year, and lamb and mutton production was down 7 percent.

May 2008 contained 22 weekdays (including one holiday) and 5 Saturdays.

May 2009 contained 21 weekdays (including one holiday) and 5 Saturdays.

Contents

	Page
Red Meat Production, Commercial and FI, by Type, U.S.	1
Livestock Slaughter, Number and Average Weights, by Species and Type of Slaughter, U.S.	2
Commercial Red Meat Production, by State and U.S.	3
Commercial Cattle Slaughter, Number, Total and Average Live Weight, by State and U.S.	4
Commercial Calf Slaughter, Number, Total and Average Live Weight, by State and U.S.	5
Commercial Hog Slaughter, Number, Total and Average Live Weight, by State and U.S.	6
Commercial Sheep and Lamb Slaughter, Number, Total and Average Live Weight, by State and U.S.	7
Federally Inspected Classification of Number and Average Dressed Weight, by Species and Class and U.S.	8
Federally Inspected Slaughter by Species and Class, by Region and U.S.	9
Federally Inspected Percent of Total Commercial, by Species, U.S.	11
Reliability Statement.....	18
Types of Livestock Slaughter Plants	19
Terms and Definitions	20
Information Contacts	20

Commercial Red Meat Production: United States ¹

Type	May 2008	Apr 2009	May 2009	May 09 % of		Jan - May ²		
				May 2008	Apr 2009	2008	2009	09 as % of 08
	<i>Million Pounds</i>	<i>Million Pounds</i>	<i>Million Pounds</i>	<i>Percent</i>	<i>Percent</i>	<i>Million Pounds</i>	<i>Million Pounds</i>	<i>Percent</i>
Beef	2,380.1	2,133.1	2,179.7	92	102	11,007.7	10,560.9	96
Veal	11.5	11.2	10.3	89	92	57.0	56.6	99
Pork	1,815.5	1,924.1	1,716.3	95	89	9,854.8	9,451.5	96
Lamb & Mutton	15.0	15.5	13.0	87	84	76.0	70.4	93
Total Red Meat ³	4,222.0	4,083.9	3,919.3	93	96	20,995.4	20,139.5	96

¹ Based on packers' dressed weights and excludes farm slaughter.

² Accumulated totals and percentages based on unrounded data.

³ Totals may not equal sum of the parts due to rounding.

Federally Inspected Red Meat Production: United States ¹

Type	May 2008	Apr 2009	May 2009	May 09 % of		Jan - May ²		
				May 2008	Apr 2009	2008	2009	09 as % of 08
	<i>Million Pounds</i>	<i>Million Pounds</i>	<i>Million Pounds</i>	<i>Percent</i>	<i>Percent</i>	<i>Million Pounds</i>	<i>Million Pounds</i>	<i>Percent</i>
Beef	2,351.2	2,102.1	2,151.3	91	102	10,856.2	10,407.0	96
Veal	11.2	11.0	10.0	89	91	55.7	55.4	99
Pork	1,801.7	1,910.8	1,704.6	95	89	9,781.9	9,386.6	96
Lamb & Mutton	14.4	14.7	12.3	85	84	73.1	67.2	92
Total Red Meat ³	4,178.6	4,038.6	3,878.1	93	96	20,766.9	19,916.3	96

¹ Based on packers' dressed weights and excludes farm slaughter.

² Accumulated totals and percentages based on unrounded data.

³ Totals may not equal sum of the parts due to rounding.

Livestock Slaughter: Number and Average Weights, United States ¹

Species	Unit	May 2008	Apr 2009	May 2009	May 09 % of		Jan - May ²		
					May 2008	Apr 2009	2008	2009	09 % of 08
					Percent	Percent			Prcnt
Cattle No.									
Fed. Insp.	Thou	3,095.0	2,724.4	2,805.7	91	103	14,137.7	13,357.8	94
Other	Thou	44.6	47.7	43.9	98	92	233.4	239.9	103
Comm'l. ³	Thou	3,139.6	2,772.1	2,849.6	91	103	14,371.1	13,597.7	95
Live Wt/Hd									
Fed. Insp.	Lbs	1,253	1,278	1,266	101	99	1,274	1,294	102
Other	Lbs	1,137	1,143	1,135	100	99	1,144	1,140	100
Comm'l.	Lbs	1,251	1,276	1,264	101	99	1,272	1,292	102
Calves No.									
Fed. Insp.	Thou	70.0	67.1	64.1	92	96	350.4	366.7	105
Other	Thou	1.0	0.9	1.0	98	108	5.6	5.1	92
Comm'l. ³	Thou	71.0	68.0	65.1	92	96	356.0	371.8	104
Live Wt/Hd									
Fed. Insp.	Lbs	274	279	266	97	95	272	260	96
Other	Lbs	405	411	429	106	104	404	410	102
Comm'l.	Lbs	275	281	268	97	96	274	262	96
Hogs No.									
Fed. Insp.	Thou	8,980.5	*9,353.4	8,379.3	93	90	48,242.1	45,992.1	95
Other	Thou	81.6	77.7	71.7	88	92	416.7	378.3	91
Comm'l. ³	Thou	9,062.1	9,431.1	8,451.0	93	90	48,658.8	46,370.4	95
Live Wt/Hd									
Fed. Insp.	Lbs	268	272	272	101	100	271	272	101
Other	Lbs	235	238	228	97	96	242	238	98
Comm'l.	Lbs	268	272	271	101	100	270	272	101
Sheep&Lambs No.									
Fed. Insp.	Thou	195.1	212.8	167.0	86	78	1,024.7	937.0	91
Other	Thou	11.7	16.3	17.7	152	109	58.7	68.3	116
Comm'l. ³	Thou	206.8	229.1	184.7	89	81	1,083.4	1,005.4	93
Live Wt/Hd									
Fed. Insp.	Lbs	148	138	147	99	106	143	143	100
Other	Lbs	105	93	84	81	91	101	95	95
Comm'l.	Lbs	146	135	141	97	104	141	140	100
Goats No.									
Fed. Insp.	Thou	52.6	55.2	49.7	94	90	257.6	252.7	98
Other	Thou	16.2	12.3	13.4	83	109	73.9	66.0	89
Comm'l. ³	Thou	68.8	67.5	63.1	92	93	331.5	318.7	96
Live Wt/Hd									
Fed. Insp.	Lbs	62	60	60	98	100	62	61	99
Other	Lbs	64	70	71	112	101	68	71	103
Comm'l.	Lbs	62	62	63	101	101	63	63	100
Bison No.									
Fed. Insp.	Thou	4.7	4.4	4.4	94	99	24.1	22.1	92
Other	Thou	1.2	1.4	1.2	99	88	7.0	6.7	96
Comm'l. ³	Thou	5.9	5.8	5.6	95	97	31.1	28.8	93

* Revised.

¹ Excludes slaughter on farms.

² Accumulated totals and percentages based on unrounded data.

³ Totals may not equal sum of the parts due to rounding.

Commercial Red Meat Production: By State and United States ¹

State	May 2008	Apr 2009	May 2009	May 09 as % of ²	
				May 2008	Apr 2009
	<i>Million Pounds</i>	<i>Million Pounds</i>	<i>Million Pounds</i>	<i>Percent</i>	<i>Percent</i>
AL	2.0	2.0	1.6	80	79
AK					
AZ	36.6	30.6	30.4	83	99
AR	5.0	4.3	4.2	83	96
CA	138.7	139.1	137.8	99	99
CO	197.3	169.7	162.1	82	96
DE-MD	3.0	3.1	3.0	98	98
FL	8.9	8.5	8.4	94	99
GA	12.4	12.0	10.2	82	85
HI	0.9	0.8	0.8	87	97
ID	18.2	19.2	18.5	101	96
IL	241.3	240.5	211.6	88	88
IN	127.9	144.0	128.8	101	89
IA	564.9	576.7	515.7	91	89
KS	488.6	443.9	454.6	93	102
KY	44.2	46.7	41.1	93	88
LA	0.5	0.6	0.5	101	90
MI	42.8	43.1	43.0	100	100
MN	206.3	205.5	196.2	95	95
MS	1.1	1.1	0.8	73	70
MO	128.0	148.9	133.5	104	90
MT	1.7	0.9	0.8	49	92
NE	631.0	580.8	587.5	93	101
NV	0.1	0.1	0.1	79	147
N ENG ³	1.1	1.2	1.2	114	100
NJ	3.8	4.2	4.0	106	97
NM	0.4	0.4	0.4	102	83
NY	2.8	2.5	2.3	81	90
NC	200.2	215.6	188.3	94	87
ND	2.5	2.6	2.3	90	88
OH	25.6	24.6	22.4	88	91
OK	91.2	102.0	94.8	104	93
OR	4.5	4.5	4.1	90	91
PA	111.4	106.4	102.9	92	97
SC	21.1	19.8	18.8	89	95
SD	75.3	80.4	68.8	91	86
TN	16.1	15.8	15.1	94	96
TX	490.0	432.0	454.0	93	105
UT	41.1	35.5	34.6	84	98
VA	41.4	36.9	32.9	79	89
WA	66.8	64.8	67.2	101	104
WV	0.3	0.5	0.4	124	77
WI	124.2	111.5	113.2	91	102
WY	0.5	0.5	0.5	99	94
US	4,222.0	4,083.9	3,919.3	93	96

¹ Includes total beef, veal, pork, lamb, and mutton.

² Percentages based on unrounded data.

³ N ENG includes CT, ME, MA, NH, RI, and VT.

**Commercial Cattle Slaughter: By State and United States,
May 2008 and 2009¹**

State	Number Slaughtered		Total Live Weight		Average Live Weight	
	2008	2009	2008	2009	2008	2009
	<i>1,000 Head</i>	<i>1,000 Head</i>	<i>1,000 Pounds</i>	<i>1,000 Pounds</i>	<i>Pounds</i>	<i>Pounds</i>
AL	0.5	0.6	503	487	958	867
AK						
AZ	46.0	42.6	63,164	54,426	1,377	1,283
AR	0.8	0.8	778	733	1,005	950
CA	131.5	134.6	168,229	173,144	1,298	1,306
CO	242.4	197.2	302,263	248,582	1,248	1,261
DE-MD	3.4	3.4	4,501	4,403	1,326	1,312
FL						
GA		18.8		18,047		963
HI	1.0	0.9	1,115	1,008	1,098	1,129
ID	24.4	25.2	30,179	31,310	1,252	1,263
IL						
IN	2.7	2.9	2,881	3,020	1,055	1,057
IA						
KS	615.4	564.1	758,628	704,724	1,233	1,250
KY	1.5	1.5	1,420	1,461	938	947
LA	0.6	0.6	472	437	737	776
MI	49.5	50.4	66,885	68,413	1,356	1,365
MN	75.2	64.1	102,560	88,286	1,371	1,387
MS	0.1		71		867	
MO	7.6	7.0	8,949	8,322	1,185	1,191
MT	2.1	1.0	2,456	1,200	1,185	1,180
NE	652.3	579.4	835,500	756,359	1,283	1,307
NV	0.2	0.1	179	133	1,025	983
N ENG ²	1.1	1.1	1,251	1,185	1,145	1,076
NJ	2.4	2.9	2,540	3,352	1,073	1,156
NM	0.3	0.5	336	483	1,057	1,101
NY	2.2	2.3	2,635	2,651	1,180	1,183
NC	19.1	18.5	22,337	21,300	1,171	1,155
ND	1.1	1.4	1,423	1,742	1,264	1,260
OH	10.4	9.2	12,246	10,839	1,190	1,187
OK	2.6	2.1	2,954	2,242	1,147	1,073
OR	3.0	2.9	3,516	3,354	1,218	1,203
PA	84.8	76.4	105,743	94,191	1,256	1,247
SC	14.2	11.7	16,312	12,911	1,151	1,117
SD						
TN	2.2	2.9	1,981	2,445	906	867
TX	652.0	597.7	785,058	728,559	1,207	1,222
UT	52.4		65,405		1,251	
VA	0.9	1.0	964	1,027	1,030	1,073
WA	87.1	87.4	108,977	108,912	1,258	1,251
WV	0.4	0.5	515	564	1,157	1,213
WI	144.7	135.2	192,485	180,560	1,345	1,351
WY	0.6	0.6	745	763	1,246	1,175
US ³	3,139.6	2,849.6	3,916,559	3,589,969	1,251	1,264

¹ Includes slaughter under Federal inspection and other Commercial slaughter, excludes farm slaughter.

² N ENG includes CT, ME, MA, NH, RI, and VT.

³ States with no data printed are still included in the US total, data not printed to avoid disclosing individual operations. Accumulated totals and percentages based on unrounded data.

**Commercial Calf Slaughter: By State and United States,
May 2008 and 2009 ¹**

State	Number Slaughtered		Total Live Weight		Average Live Weight	
	2008	2009	2008	2009	2008	2009
	<i>1,000 Head</i>	<i>1,000 Head</i>	<i>1,000 Pounds</i>	<i>1,000 Pounds</i>	<i>Pounds</i>	<i>Pounds</i>
AL						
AK						
AZ						
AR						
CA	14.9	16.1	1,766	1,707	120	108
CO						
DE-MD	0.2	0.2	48	56	275	283
FL	0.1		42		449	
GA	0.1	0.1	36	43	480	460
HI						
ID						
IL	4.7	2.8	1,043	1,068	222	384
IN						
IA						
KS						
KY						
LA	0.3	0.3	137	182	532	527
MI	1.5	1.5	600	662	409	436
MN						
MS						
MO	0.1		24		376	
MT						
NE						
NV						
N ENG ²	0.2	3.2	71	284	344	91
NJ	5.6	5.3	2,373	2,268	422	426
NM	1.4		124		89	
NY	13.7	9.1	1,614	873	122	98
NC	0.1	0.1	44	52	481	496
ND						
OH	3.5	4.8	1,572	1,920	454	399
OK		0.1		37		420
OR						
PA	11.3	9.4	4,470	3,980	395	422
SC						
SD						
TN	0.1		28		453	
TX	0.7	2.3	413	385	570	169
UT						
VA						
WA						
WV						
WI						
WY						
US ³	71.0	65.1	19,356	17,297	275	268

¹ Includes slaughter under Federal inspection and other Commercial slaughter, excludes farm slaughter.

² N ENG includes CT, ME, MA, NH, RI, and VT.

³ States with no data printed are still included in the US total, data not printed to avoid disclosing individual operations. Accumulated totals and percentages based on unrounded data.

**Commercial Hog Slaughter: By State and United States,
May 2008 and 2009 ¹**

State	Number Slaughtered		Total Live Weight		Average Live Weight	
	2008	2009	2008	2009	2008	2009
	<i>1,000 Head</i>	<i>1,000 Head</i>	<i>1,000 Pounds</i>	<i>1,000 Pounds</i>	<i>Pounds</i>	<i>Pounds</i>
AL	7.1	5.7	3,146	2,452	445	428
AK	0.1	0.1	9	15	182	171
AZ	0.3	0.1	58	24	226	263
AR	15.1	12.2	6,915	5,632	458	463
CA	216.4	204.5	52,008	49,818	240	244
CO	0.6	0.6	155	150	253	257
DE-MD	1.1	1.1	244	250	225	227
FL	7.4	5.0	959	754	130	150
GA	9.0	5.1	2,033	1,303	225	256
HI	1.6	1.3	369	285	224	225
ID	12.1	9.6	3,061	2,455	254	257
IL	830.5	686.9	229,440	193,682	277	282
IN	640.7	630.2	166,571	167,832	260	266
IA	2,604.0	2,363.3	693,990	640,190	267	271
KS						
KY						
LA	1.1	0.9	216	178	196	201
MI	9.8	8.7	3,724	3,270	383	375
MN	772.0	740.8	200,086	195,413	260	264
MS	5.2	4.1	1,531	1,131	295	273
MO	592.1	615.4	162,894	170,958	275	278
MT	1.1	0.6	334	155	292	250
NE	582.1	589.8	154,631	159,102	266	270
NV						
N ENG ²	1.3	1.4	273	303	214	215
NJ	8.7	7.0	816	680	94	97
NM	0.1	0.1	14	16	249	241
NY	2.3	1.8	466	323	201	184
NC	966.5	906.9	250,258	235,680	259	260
ND	9.8	7.2	2,520	1,826	258	255
OH	89.6	75.2	24,471	20,884	274	278
OK	422.7	440.5	118,008	122,768	279	279
OR	13.7	11.2	3,458	2,863	254	256
PA	245.7	237.9	62,318	60,621	254	255
SC						
SD	341.5	310.3	86,993	80,968	255	261
TN	46.3	45.0	22,365	20,371	484	454
TX	37.3	29.0	8,565	6,893	230	238
UT	5.4	4.3	1,151	909	214	210
VA	202.4	159.9	53,562	42,586	265	266
WA	2.4	1.8	449	381	186	211
WV	0.5	0.4	121	91	237	222
WI	53.5	43.0	24,700	18,705	469	442
WY	0.2	0.2	70	52	300	263
US ³	9,062.1	8,451.0	2,426,311	2,291,361	268	271

¹ Includes slaughter under Federal inspection and other Commercial slaughter, excludes farm slaughter.

² N ENG includes CT, ME, MA, NH, RI, and VT.

³ States with no data printed are still included in the US total, data not printed to avoid disclosing individual operations. Accumulated totals and percentages based on unrounded data.

**Commercial Sheep and Lamb Slaughter: By State and United States,
May 2008 and 2009¹**

State	Number Slaughtered		Total Live Weight		Average Live Weight	
	2008	2009	2008	2009	2008	2009
	<i>1,000 Head</i>	<i>1,000 Head</i>	<i>1,000 Pounds</i>	<i>1,000 Pounds</i>	<i>Pounds</i>	<i>Pounds</i>
AL		0.1		4		86
AK						
AZ	0.1	0.1	10	15	126	112
AR		0.1		5		97
CA						
CO	85.9	70.1	14,381	11,926	168	170
DE-MD	3.2	3.1	309	303	96	98
FL	0.2	0.3	14	15	57	50
GA	0.4	0.3	38	17	98	61
HI						
ID	0.3	0.2	38	24	138	135
IL						
IN	2.2	2.9	241	328	109	112
IA	19.0	19.1	3,115	3,129	165	164
KS	0.3	0.2	27	26	104	109
KY	1.1	0.9	135	111	127	123
LA	0.2	0.3	14	18	64	59
MI	14.8	13.1	1,997	1,696	135	131
MN	0.7	3.2	97	487	148	151
MS						
MO	0.4	0.4	57	54	134	125
MT	0.3	0.2	23	17	68	106
NE	0.1	0.1	8	10	131	143
NV	0.1	0.1	18	21	158	160
N ENG ²	1.9	2.8	195	276	100	98
NJ	12.2	11.4	1,023	939	84	82
NM	1.5	1.1	166	159	145	148
NY	2.7	2.4	224	218	84	90
NC	0.5	0.8	46	58	86	75
ND	0.1	0.1	8	8	117	112
OH	1.2	1.1	122	122	105	114
OK	0.1	0.1	12	13	111	103
OR	2.0	1.7	273	246	140	143
PA	4.4	3.1	424	305	97	98
SC		0.1		10		84
SD	0.2	0.2	19	27	115	128
TN	0.9	1.2	64	86	71	71
TX	2.9	9.6	270	609	92	64
UT	2.8	3.0	384	417	139	137
VA	1.0	1.5	92	148	93	96
WA	0.6	0.6	101	108	168	169
WV	0.1		18		140	
WI	0.9	0.9	125	121	133	137
WY	0.1	0.1	15	12	146	180
US ³	206.8	184.7	29,993	25,950	146	141

¹ Includes slaughter under Federal inspection and other Commercial slaughter, excludes farm slaughter.

² N ENG includes CT, ME, MA, NH, RI, and VT.

³ States with no data printed are still included in the US total, data not printed to avoid disclosing individual operations. Accumulated totals and percentages based on unrounded data.

**Classification of Livestock Slaughtered Under Federal Inspection:
United States**

Item	May 2008	Apr 2009	May 2009	Jan - May ¹		May 2008	Apr 2009	May 2009	Jan - May ¹	
				2008	2009				2008	2009
	<i>1,000 Head</i>	<i>1,000 Head</i>	<i>1,000 Head</i>	<i>1,000 Head</i>	<i>1,000 Head</i>	<i>Percent of Total</i>	<i>Percent of Total</i>	<i>Percent of Total</i>	<i>Percent of Total</i>	<i>Percent of Total</i>
Class ²										
Cattle										
Steers	1,654	1,386	1,469	7,140	6,638	53.4	50.9	52.4	50.5	49.7
Heifers	878	819	817	4,267	4,013	28.4	30.1	29.1	30.2	30.0
All Cows	510	471	470	2,494	2,486	16.5	17.3	16.8	17.6	18.6
Dairy Cows	195	215	212	1,079	1,189	6.3	7.9	7.5	7.6	8.9
Other Cows	315	256	259	1,415	1,297	10.2	9.4	9.2	10.0	9.7
Bulls	53	48	49	237	220	1.7	1.8	1.7	1.7	1.6
Total ¹	3,095	2,724	2,806	14,138	13,358	100.0	100.0	100.0	100.0	100.0
Calves & Vealers	70	67	64	350	367	100.0	100.0	100.0	100.0	100.0
Hogs										
Barrow & Gilts	8,646	9,054	8,105	46,567	44,545	96.3	96.8	96.7	96.5	96.9
Sows	295	262	240	1,478	1,273	3.3	2.8	2.9	3.1	2.8
Boars	39	37	35	197	174	0.4	0.4	0.4	0.4	0.4
Total ¹	8,981	9,353	8,379	48,242	45,992	100.0	100.0	100.0	100.0	100.0
Sheep										
Mature Sheep	11	10	10	49	47	5.9	4.6	6.2	4.8	5.0
Lambs & Yrlngs	184	203	157	975	890	94.1	95.4	93.8	95.2	95.0
Total ¹	195	213	167	1,025	937	100.0	100.0	100.0	100.0	100.0
Average Dressed Weight										
	<i>Pounds</i>	<i>Pounds</i>	<i>Pounds</i>	<i>Pounds</i>	<i>Pounds</i>					
Cattle										
Steers ³	762	774	769	771	782					
Heifers ³	814	829	823	823	840					
All Cows ³	744	767	754	761	779					
Bulls ³	609	613	612	622	618					
Bulls ³	902	884	889	892	881					
Calves & Vealers	162	165	158	161	153					
Hogs										
Barrow Gilts ⁴	201	204	204	203	204					
Sows ⁴	197	202	201	200	201					
Boars ⁴	310	305	304	308	303					
Boars ⁴	209	200	193	209	198					
Sheep										
Mature Sheep ⁵	74	69	74	71	72					
Lamb & Yrlngs ⁵	66	67	64	67	67					
Lamb & Yrlngs ⁵	75	69	74	72	72					

¹ Total and percentages based on unrounded data.

² Species totals and classification reported by food inspectors, Inspection Operations, FSIS.

³ Included in cattle average dressed weight.

⁴ Included in hog average dressed weight.

⁵ Included in sheep average dressed weight.

**Federally Inspected Slaughter: By Region and United States,
May 2009¹**

Standard Federal Regions	Cattle							Calves
	Total ²	Steers	Heifers	Cows			Bulls	Total
				All	Dairy	Other		
	<i>1,000 Head</i>	<i>1,000 Head</i>	<i>1,000 Head</i>	<i>1,000 Head</i>	<i>1,000 Head</i>	<i>1,000 Head</i>	<i>1,000 Head</i>	<i>1,000 Head</i>
1	1.0	0.4	0.2					3.1
2	5.0	1.7	0.3	2.6	2.2	0.4	0.5	14.4
3	79.0	33.8	8.0	35.6	28.2	7.4	1.7	9.8
4	65.8	1.7	0.7	53.4	10.7	42.7	9.9	0.3
5	329.2	156.9	42.8	121.4	62.7	58.7	8.1	17.3
6	595.5	323.2	183.1	77.8	17.1	60.7	11.3	2.2
7	1,185.1	679.4	443.4	54.8	1.1	53.7	7.5	
8	252.9	139.6	96.1					
9	177.6	84.2	10.7	79.0	67.6	11.4	3.7	16.0
10	114.7	48.0	32.0	30.3	16.3	14.1	4.4	
US ²	2,805.7	1,468.9	817.3	470.4	211.7	258.8	49.1	64.1
	Hogs				Sheep			
	Total ²	Barrows & Gilts	Sows	Boars	Total ²	Mature Sheep	Lambs & Yearlings	
	<i>1,000 Head</i>	<i>1,000 Head</i>	<i>1,000 Head</i>	<i>1,000 Head</i>	<i>1,000 Head</i>	<i>1,000 Head</i>	<i>1,000 Head</i>	<i>1,000 Head</i>
1	1.2	1.1			2.7	0.4	2.3	
2	8.6	8.5	0.1	0.1	13.2	1.9	11.3	
3	397.9	387.5	1.1	9.3	8.6	0.4	8.2	
4	1,216.9	1,155.8	59.7	1.4	3.5	1.1	2.4	
5	2,155.8	2,050.2	102.6	3.0	19.8	2.7	17.0	
6	474.2	456.8	17.4	0.1				
7	3,583.4	3,504.6	58.1	20.7	19.6	0.4	19.2	
8	320.0	319.5	0.4		72.7	1.8	70.9	
9	199.2	199.1	0.1					
10	22.0	21.9			1.9	0.2	1.7	
US ²	8,379.3	8,105.2	239.5	34.6	167.0	10.3	156.7	

¹ States included in regions are as follows: 1- CT, ME, NH, VT, MA, & RI; 2- NY & NJ; 3- DE-MD, PA, WV, & VA; 4- AL, FL, GA, KY, MS, NC, SC, & TN; 5- IL, IN, MI, MN, OH, & WI; 6- AR, LA, NM, OK, & TX; 7- IA, KS, MO, & NE; 8- CO, MT, ND, SD, UT, & WY; 9- AZ, CA, HI & NV; 10- AK, ID, OR, & WA.

² Regions with no data printed are still included in the US and Region total, data not printed to avoid disclosing individual operations. Totals may not add due to rounding.

**Federally Inspected Slaughter: By Region and United States,
January - May 2009¹**

Standard Federal Regions	Cattle							Calves
	Total ²	Steers	Heifers	Cows			Bulls	Total
				All	Dairy	Other		
	<i>1,000 Head</i>	<i>1,000 Head</i>	<i>1,000 Head</i>	<i>1,000 Head</i>	<i>1,000 Head</i>	<i>1,000 Head</i>	<i>1,000 Head</i>	<i>1,000 Head</i>
1	4.9	2.0	1.0					11.5
2	25.0	8.3	1.5	13.3	11.3	2.0	1.9	92.2
3	394.3	158.5	36.2	192.9	153.5	39.4	6.6	55.0
4	326.4	8.3	3.0	269.7	63.7	206.0	45.4	1.6
5	1,630.7	705.8	218.7	667.8	361.4	306.4	38.3	89.9
6	2,750.3	1,436.4	843.4	417.4	104.4	312.9	53.1	14.3
7	5,505.4	3,046.0	2,141.8	283.6	8.2	275.4	34.0	
8	1,263.4	634.4	540.7					
9	893.2	430.0	53.1	395.7	352.7	43.1	14.4	97.0
10	564.2	208.5	173.6	164.8	101.3	63.5	17.2	
US ²	13,357.8	6,638.2	4,013.0	2,486.2	1,189.3	1,296.9	220.4	366.7
	Hogs				Sheep			
	Total ²	Barrows & Gilts	Sows	Boars	Total ²	Mature Sheep	Lambs & Yearlings	
	<i>1,000 Head</i>	<i>1,000 Head</i>	<i>1,000 Head</i>	<i>1,000 Head</i>	<i>1,000 Head</i>	<i>1,000 Head</i>	<i>1,000 Head</i>	
1	5.0	4.8	0.1	0.1	13.9	1.5	12.4	
2	47.0	46.1	0.4	0.5	66.8	6.6	60.2	
3	2,104.3	2,050.6	6.3	47.4	45.7	2.2	43.6	
4	6,671.7	6,312.3	351.0	8.4	16.2	4.7	11.5	
5	11,830.0	11,286.3	526.3	17.5	117.8	13.5	104.3	
6	2,400.0	2,296.5	102.4	1.1				
7	19,695.3	19,311.8	284.4	99.1	140.3	1.6	138.7	
8	2,064.6	2,063.1	1.5		410.7	9.0	401.7	
9	1,053.1	1,052.6	0.4	0.1				
10	121.0	120.6	0.4		9.2	0.8	8.4	
US ²	45,992.1	44,544.8	1,273.1	174.1	937.0	46.7	890.3	

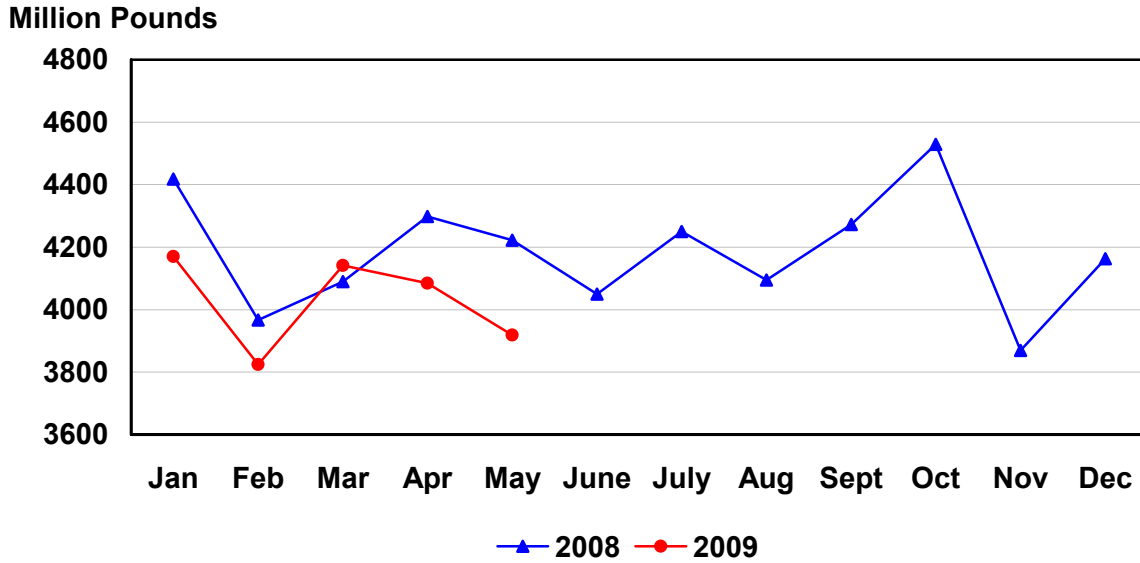
¹ States included in regions are as follows: 1- CT, ME, NH, VT, MA, & RI; 2- NY & NJ; 3- DE-MD, PA, WV, & VA; 4- AL, FL, GA, KY, MS, NC, SC, & TN; 5- IL, IN, MI, MN, OH, & WI; 6- AR, LA, NM, OK, & TX; 7- IA, KS, MO, & NE; 8- CO, MT, ND, SD, UT, & WY; 9- AZ, CA, HI & NV; 10- AK, ID, OR, & WA.

² Regions with no data printed are still included in the US and Region total, data not printed to avoid disclosing individual operations. Totals may not add due to rounding.

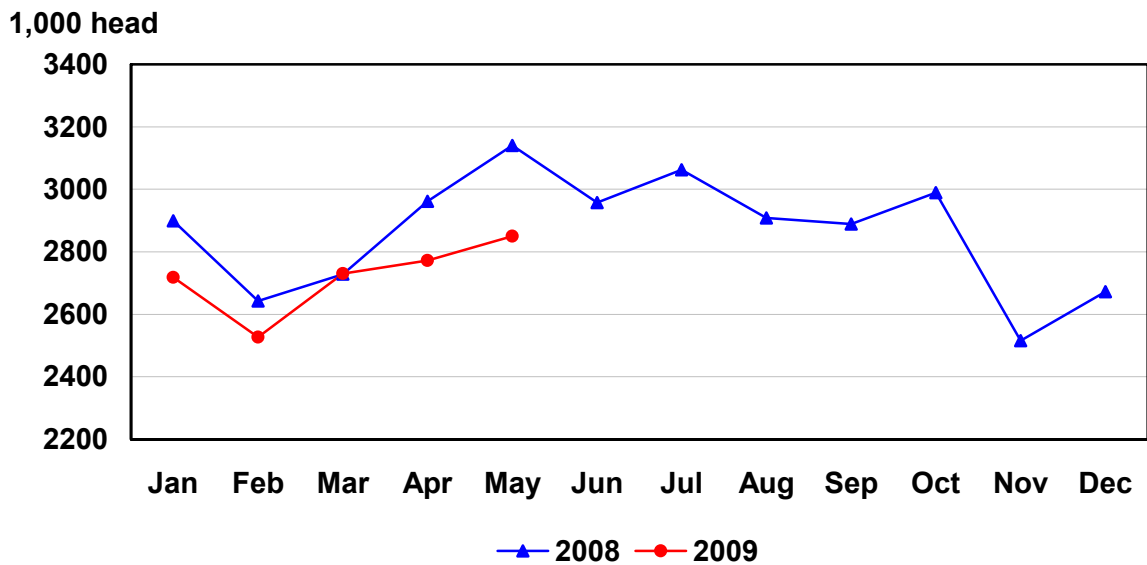
Federally Inspected Slaughter: Percent of Total Commercial Slaughter by Species, United States

Species	May 2008	Apr 2009	May 2009	Jan - May	
				2008	2009
	<i>Percent</i>	<i>Percent</i>	<i>Percent</i>	<i>Percent</i>	<i>Percent</i>
Cattle	98.6	98.3	98.5	98.4	98.2
Calves	98.6	98.7	98.5	98.4	98.6
Hogs	99.1	99.2	99.2	99.1	99.2
Sheep	94.4	92.9	90.4	94.6	93.2

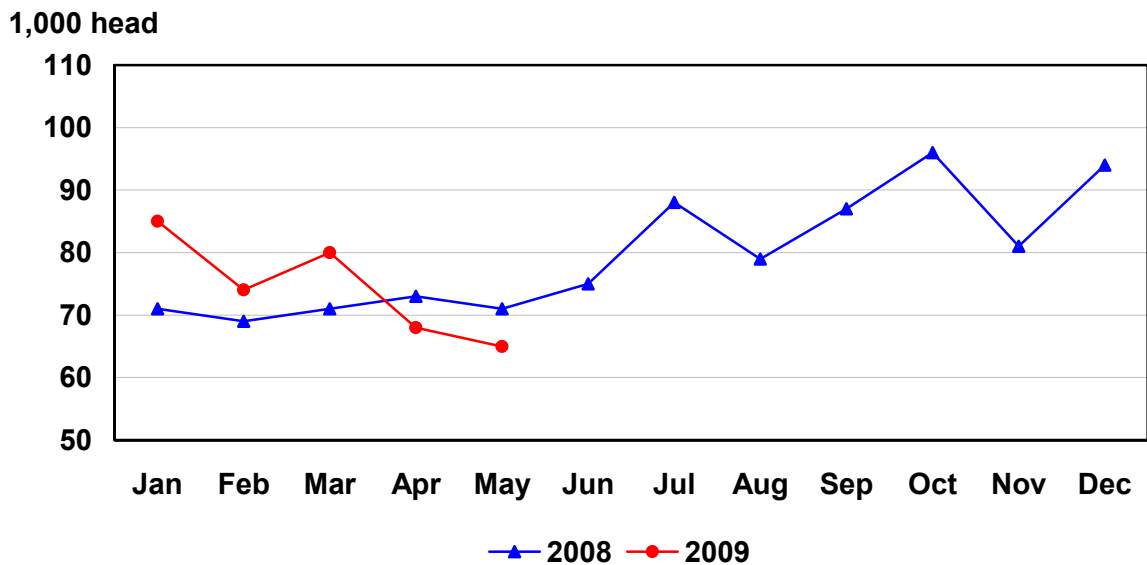
U.S. Monthly Commercial Red Meat Production



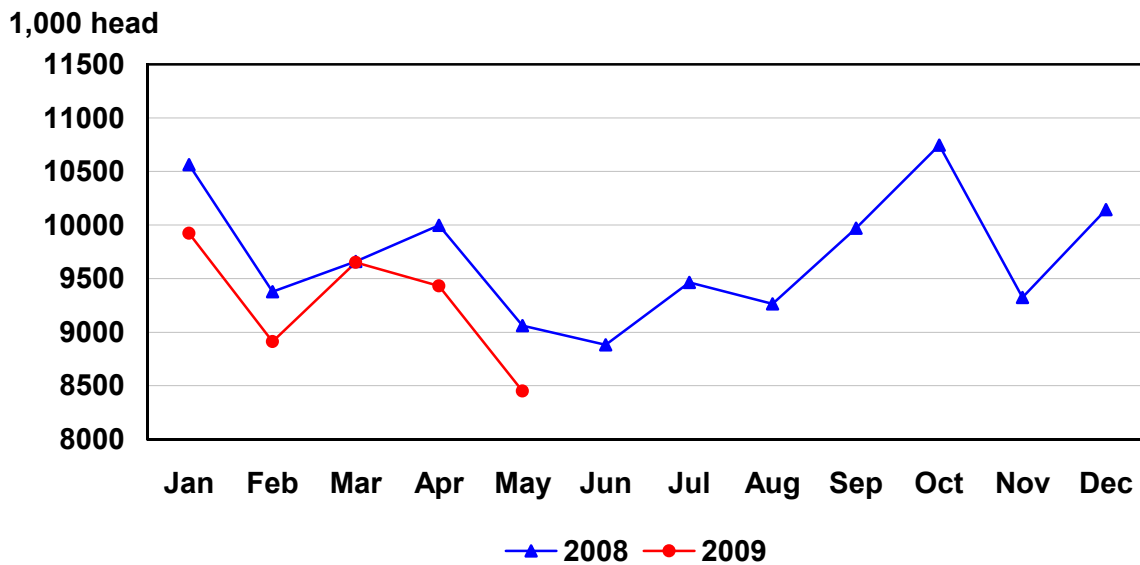
U.S. Monthly Commercial Slaughter Cattle



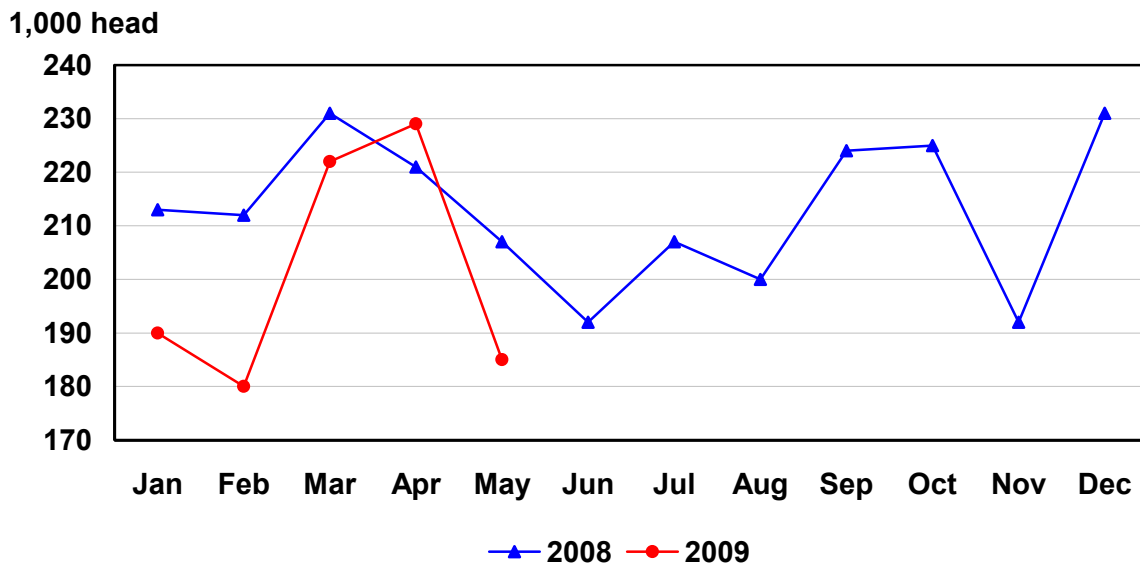
U.S. Monthly Commercial Slaughter Calves



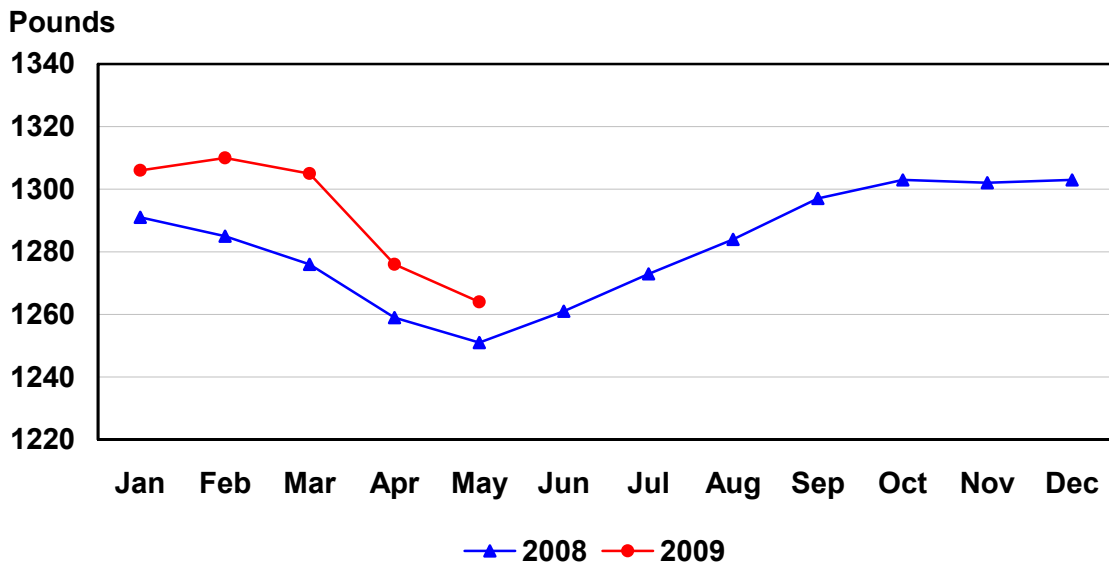
U.S. Monthly Commercial Slaughter Hogs



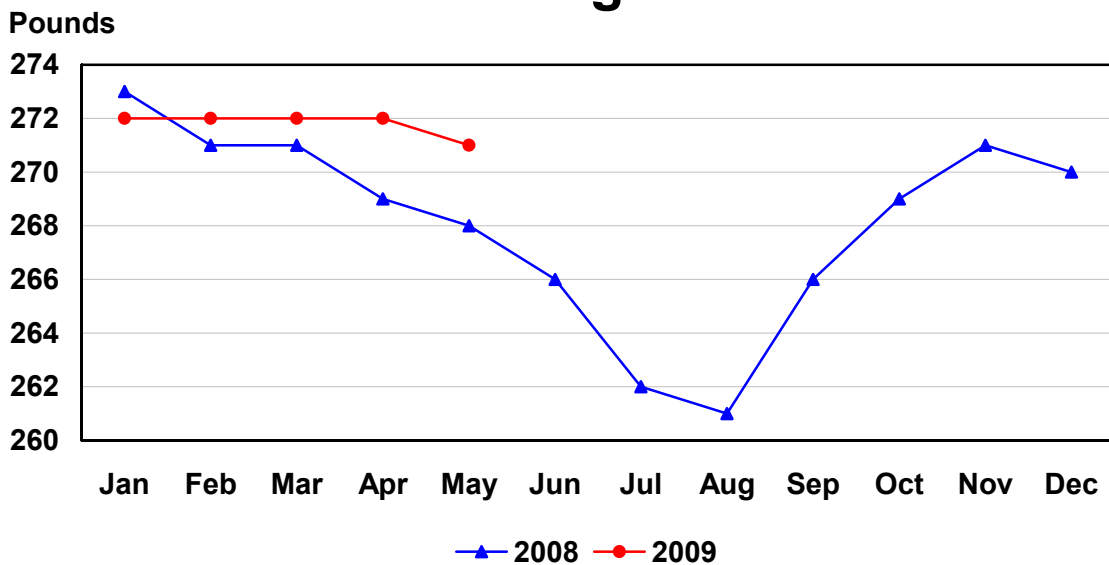
U.S. Monthly Commercial Slaughter Sheep



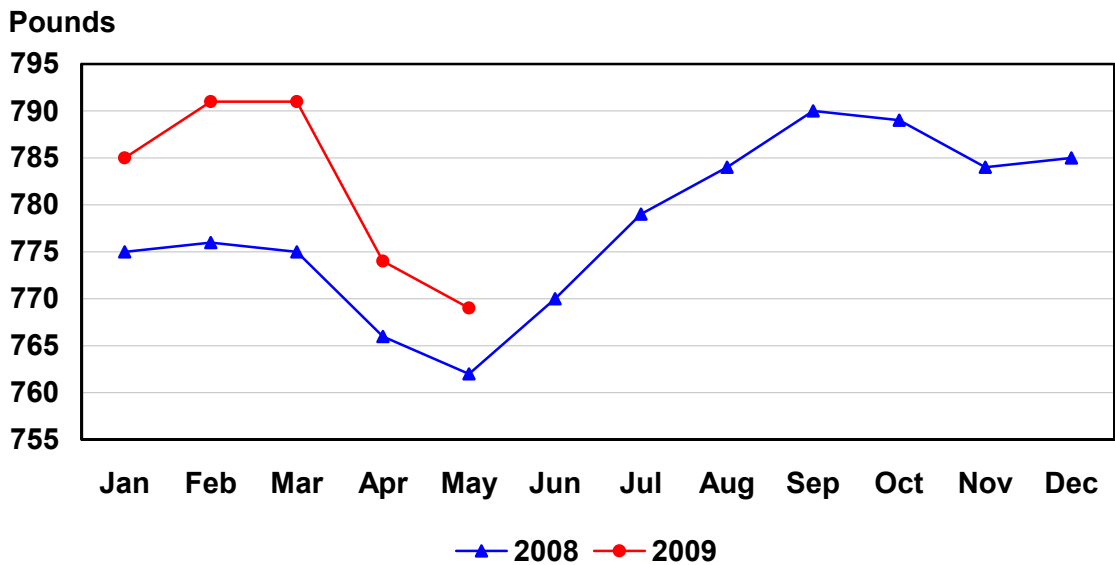
U.S. Monthly Commercial Slaughter Average Live Weight Cattle



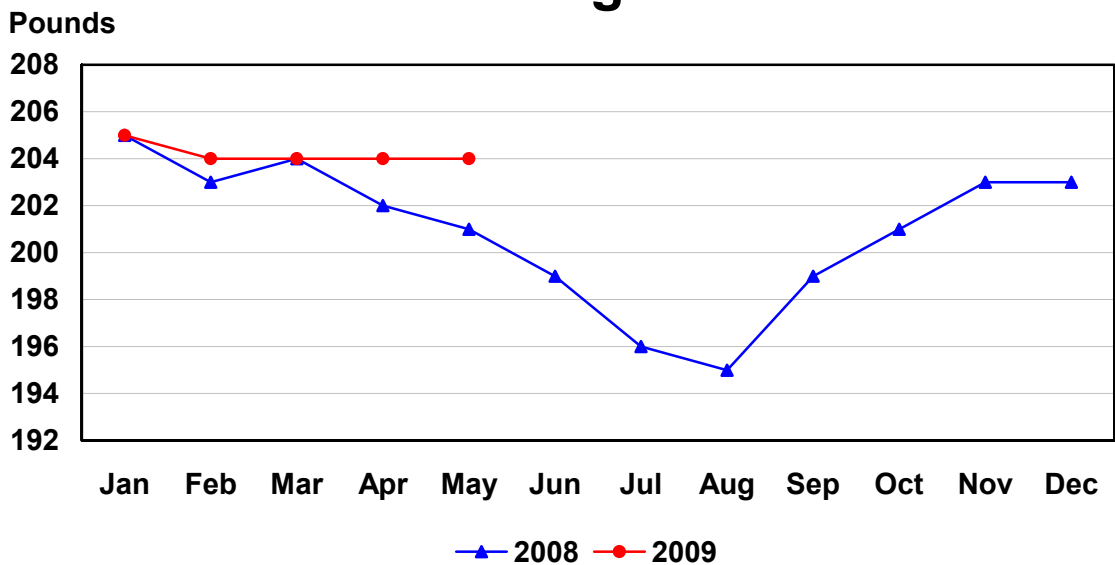
U.S. Monthly Commercial Slaughter Average Live Weight Hogs



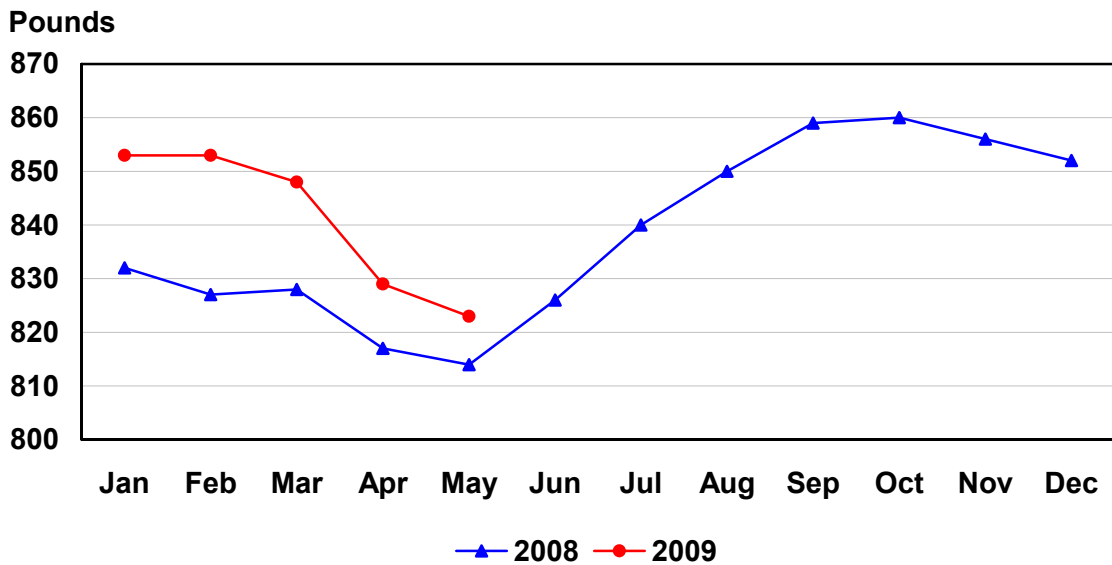
U.S. Monthly Federally Inspected Average Dressed Weight Cattle



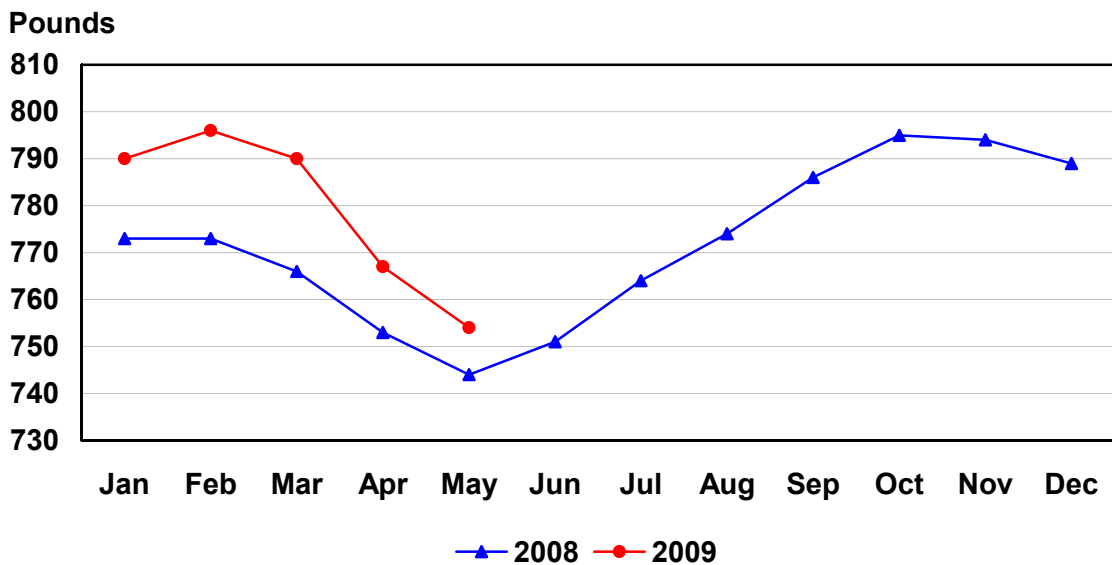
U.S. Monthly Federally Inspected Average Dressed Weight Hogs



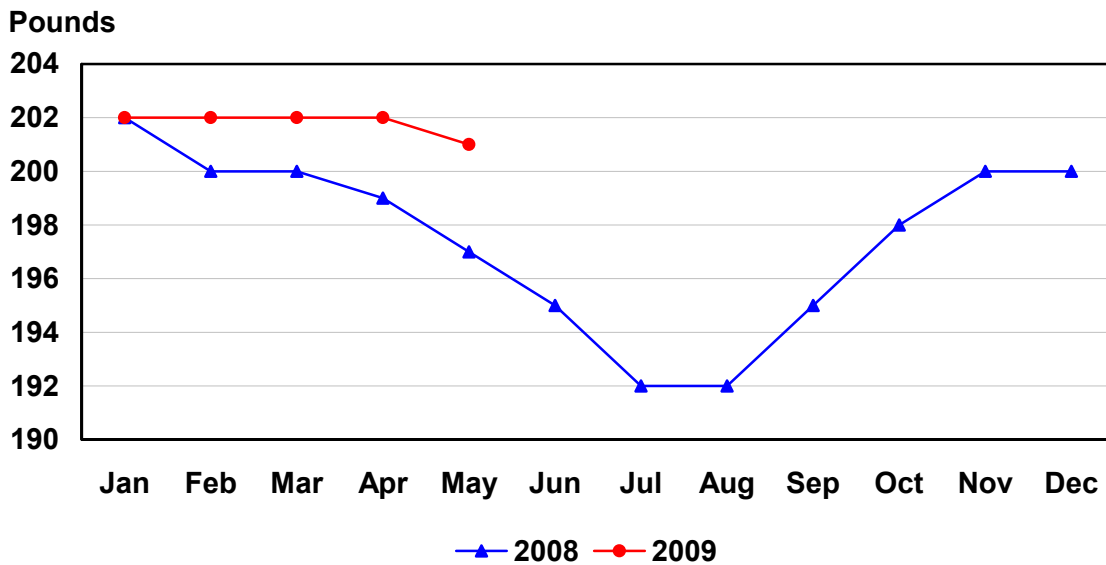
U.S. Monthly Federally Inspected Average Dressed Weight Steers



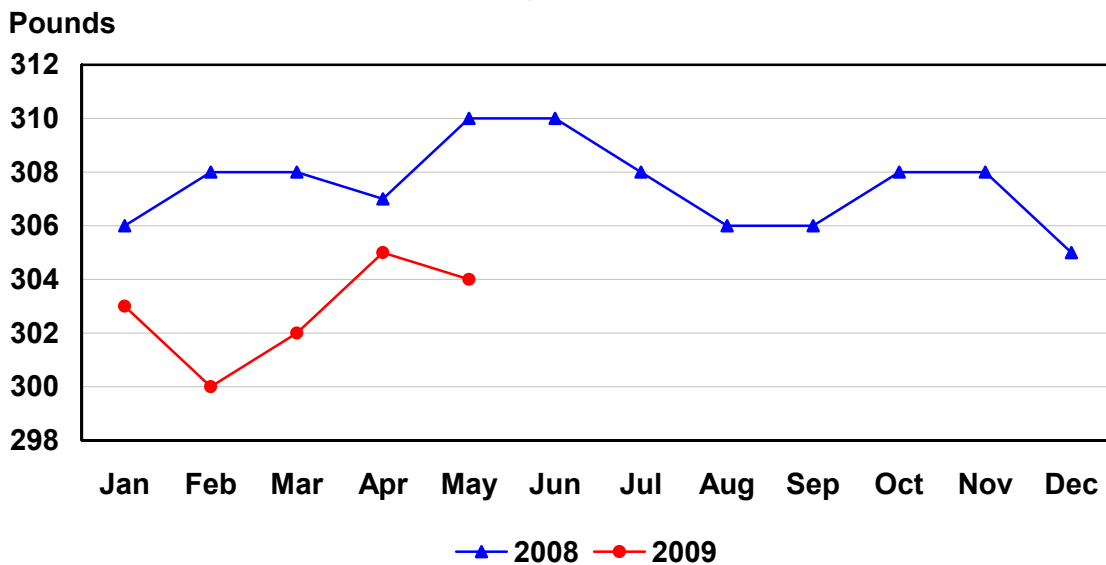
U.S. Monthly Federally Inspected Average Dressed Weight Heifers



U.S. Monthly Federally Inspected Average Dressed Weight Barrows and Gilts



U.S. Monthly Federally Inspected Average Dressed Weight Sows



Reliability of Livestock Slaughter Estimates

Data Sources: Primary data for the commercial livestock slaughter estimates are obtained from electronic reports completed by inspectors from the Food Safety and Inspection Service (FSIS), USDA, which provide daily counts of animals slaughtered in Federally Inspected (FI) plants, in addition to total live and dressed weights. These counts are combined with data from State-administered Non-Federally Inspected (NFI) slaughter plants to derive total commercial slaughter estimates. More than 95 percent of the total U.S. slaughter for any species is under Federal Inspection.

There are nearly 800 livestock slaughter plants in the U.S. operating under Federal Inspection and over 2,000 Non-Federally Inspected (State-inspected or custom-exempt) slaughter plants. Slaughter from State-inspected Talmedge-Aiken plants is included in FI totals (see Types of Plants, page 18). To prevent duplication in reporting between FI and NFI plants and assure all FI plants are included, certificates prepared by FSIS identifying operating status are constantly monitored

Revision Policy: Number of head slaughtered, live weights, and dressed weights are subject to revision the following month after the monthly release. Annual totals are published in the slaughter summary each March which includes any revisions made to current and previous year's published data. Revisions are generally the result of late reports received from slaughter plants and are usually less than one-half of one percent. No revisions will be made to the previous year's data after the publication of the annual summary in March.

Procedures and Reliability: The livestock slaughter data is obtained electronically on a daily basis and summarized approximately two weeks after the week of slaughter. An edit compares each plant's data with the historical data for that plant. Data are checked for unusual values for head kill, patterns of kill, average weights, and dressing percent, based on each plant's past operating profile. In addition, the edit provides a listing of missing reports for follow-up contact with FSIS. Average live and dressed weights and dressing percentages by State are compared with the previous weeks as an additional check. Fluctuations are frequently the result of plants permanently or temporarily closing and a shift in the species reported.

The FSIS District Veterinary Medical Specialists (DVMS) are contacted by e-mail or telephone for missing or potentially erroneous slaughter data. This assures that plants slaughtering a large number of head or several species are accounted for each week. Any corrections FSIS makes to the slaughter data are included in the summary.

Imputation may be necessary for incomplete reports. The imputation of live and dressed weights is based on the current week reported data of plants of similar size and location. Imputation for live and dressed weight data for cattle and hogs is less than 10 percent and 7 percent, respectively. The imputation for calves and sheep is more frequent and variable. If no data is received electronically or by other means, for plants slaughtering fewer than 50 total head weekly of only one species, data are imputed. The imputation of head for any plant is based on the historical data for that particular plant. The imputation of head slaughtered is rare but when necessary, the imputed head kill for missing plants usually is less than 1 percent of the U.S. head kill totals.

FI data are summarized weekly and accumulated to a monthly total for this release. These weekly totals are published by USDA's Agricultural Marketing Service (AMS) in **Livestock, Meat, Wool Market News**, Weekly Summary, and Statistics and are also available on the NASS website. NFI data are summarized monthly only.

Livestock slaughter estimates are based on a census of operating plants and therefore, have no sampling error. However, they may be subject to errors such as omissions, duplications and mistakes in reporting, recording and processing the data. These errors are minimized through rigid quality controls in the edit and summarization process, and a careful review of all reported data for consistency and reasonableness.

No data are published when an individual plant's data could be divulged. If not published, these data are still included in US and region totals. A review of the data is made annually to determine the publishable data.

Types of Livestock Slaughter Plants

There are generally **four types** of slaughtering plants.

- (1) **Federally Inspected (FI) Plants:** Plants that transport meat interstate must employ federal inspectors to assure compliance with USDA standards. Any State whose commercial plants operate entirely under federal inspection may still have custom-exempt establishments for which NFI estimates are made.
- (2) **Talmedge-Aiken (TA) Plants:** Slaughter plants in which USDA is responsible for inspection. However, federal inspection is carried out by State employees. These plants are considered to be federally inspected.
- (3) **Non-Federally Inspected (NFI) Plants:** Plants which sell and transport only intrastate. State inspectors assure compliance with individual State standards for these NFI plants. Mobile slaughtering units are excluded and are considered farm slaughter.
- (4) **Custom-Exempt Plants:** Plants that do not sell meat but operate on a custom basis only are custom-exempt. The animals and meat are not inspected, but the facilities must meet health standards. These are considered NFI plants and head kill is included in NFI totals.

Terms and Definitions Used for Livestock Slaughter Estimates

Average Live Weight: Excludes post-mortem condemnations

Commercial Production: Includes slaughter and meat production in federally inspected and other plants, but excludes animals slaughtered on farms.

Dressed Weight: The weight of a chilled animal carcass. Beef with kidney knob in; veal with hide off; lamb and mutton with pluck out; pork with leaf fat and kidneys out, jowls on and head off.

Dressing Percent: Usually expressed as a percentage yield of chilled carcass in relation to the weight of the live animal on hoof. For example, a live hog that weighed 200 pounds on hoof and yielded a carcass weighing 140 pounds would have a dressing percentage of 70.

Food and Meat Inspection: Includes examination, checking, or testing of a carcass and/or meat against established government standards and involves checking the facility for cleanliness, health of animals, or parts of animals and quality of the meat produced.

Number of Head: Includes post-mortem condemnations.

Plant, Slaughter: An establishment where animals are killed and butchered.

Red Meat: Red meat production is the carcass weight after slaughter excluding condemnation and is comprised of beef, veal, pork, and lamb and mutton. The FI red meat production is equal to the total carcass weight after slaughter. The NFI meat production formula is (NFI head kill) X (live weight) X (FI dressing percentage) = NFI red meat production.

Slaughter: Killing and butchering of animals primarily for food.

Slaughter, Farm: Animals slaughtered on farms primarily for home consumption. Excludes custom slaughter for farmers at commercial establishments, but includes mobile slaughtering on farms. These estimates appear only in the annual slaughter release.

Total Live Weight: Excludes post-mortem condemnations.

Wholesome Meat Act: Legislation that specifies that all meat produced for sale in the U.S. must be inspected. Meat that is transported interstate must be inspected in compliance with Federal (USDA) Standards.

Information Contacts

Listed below are the commodity specialists in the Livestock Branch of the National Agricultural Statistics Service to contact for additional information.

Dan Kerestes, Chief, Livestock Branch.....	(202) 720-3570
Scott Hollis, Head, Livestock Section.....	(202) 690-2424
Jim Collom – Dairy Products.....	(202) 690-3236
Joe Gaynor – Dairy Products Prices.....	(202) 690-2168
Jason Hardegree – Cattle, Cattle on Feed.....	(202) 720-3040
Sherry Bertramsen – Livestock Slaughter.....	(515) 284-4340
Mike Miller – Milk Production and Milk Cows.....	(202) 720-3278
Everett Olbert – Sheep and Goats.....	(202) 720-4751
Nicholas Streff – Hogs and Pigs.....	(202) 720-3106

ACCESS TO REPORTS!!

For your convenience, there are several ways to obtain NASS reports, data products, and services:

INTERNET ACCESS

All NASS reports are available free of charge on the worldwide Internet. For access, connect to the Internet and go to the NASS Home Page at: www.nass.usda.gov.

E-MAIL SUBSCRIPTION

All NASS reports are available by subscription free of charge direct to your e-mail address. Starting with the NASS Home Page at www.nass.usda.gov, under the right navigation, *Receive reports by Email*, click on **National** or **State**. Follow the instructions on the screen.

PRINTED REPORTS OR DATA PRODUCTS

CALL OUR TOLL-FREE ORDER DESK: 800-999-6779 (U.S. and Canada)
Other areas, please call 703-605-6220 FAX: 703-605-6900
(Visa, MasterCard, check, or money order acceptable for payment.)

ASSISTANCE

For **assistance** with general agricultural statistics or further information about NASS or its products or services, contact the **Agricultural Statistics Hotline** at **800-727-9540**, 7:30 a.m. to 4:00 p.m. ET, or e-mail: nass@nass.usda.gov.

The U.S. Department of Agriculture (USDA) prohibits discrimination in all its programs and activities on the basis of race, color, national origin, age, disability, and where applicable, sex, marital status, familial status, parental status, religion, sexual orientation, genetic information, political beliefs, reprisal, or because all or part of an individual's income is derived from any public assistance program. (Not all prohibited bases apply to all programs.) Persons with disabilities who require alternative means for communication of program information (Braille, large print, audiotape, etc.) should contact USDA's TARGET Center at (202) 720-2600 (voice and TDD).

To file a complaint of discrimination, write to USDA, Director, Office of Civil Rights, 1400 Independence Avenue, S.W., Washington, D.C. 20250-9410, or call (800) 795-3272 (voice) or (202) 720-6382 (TDD). USDA is an equal opportunity provider and employer.