
Released July 24, 2009, by the National Agricultural Statistics Service (NASS), Agricultural Statistics Board, U.S. Department of Agriculture. For information on *Livestock Slaughter* call Rex Patterson at (515) 284-4340, office hours 7:00 a.m. to 4:00 p.m. CT.

Record High Red Meat Production for June

Commercial red meat production for the United States totaled 4.16 billion pounds in June, up 3 percent from the 4.05 billion pounds produced in June 2008.

Beef production, at 2.29 billion pounds, was 1 percent above the previous year. Cattle slaughter totaled 2.98 million head, up 1 percent from June 2008. The average live weight was up 8 pounds from the previous year, at 1,269 pounds.

Veal production totaled 11.5 million pounds, 2 percent below June a year ago. Calf slaughter totaled 77,200 head, up 2 percent from June 2008. The average live weight was down 16 pounds from last year, at 251 pounds.

Pork production totaled 1.85 billion pounds, up 5 percent from the previous year. Hog kill totaled 9.18 million head, up 3 percent from June 2008. The average live weight was up 3 pounds from the previous year, at 269 pounds.

Lamb and mutton production, at 13.9 million pounds, was up 6 percent from June 2008. Sheep slaughter totaled 203,000 head, 6 percent above last year. The average live weight was 137 pounds, unchanged from June a year ago.

January to June 2009 commercial red meat production was 24.3 billion pounds, down 3 percent from 2008. Accumulated beef production was down 3 percent from last year, veal was down 1 percent, pork was down 3 percent from last year, and lamb and mutton production was down 5 percent.

June 2008 contained 21 weekdays (including zero holidays) and 4 Saturdays.

June 2009 contained 22 weekdays (including zero holidays) and 4 Saturdays.

Contents

	Page
Red Meat Production, Commercial and FI, by Type, U.S.	1
Livestock Slaughter, Number and Average Weights, by Species and Type of Slaughter, U.S.	2
Commercial Red Meat Production, by State and U.S.	3
Commercial Cattle Slaughter, Number, Total and Average Live Weight, by State and U.S.	4
Commercial Calf Slaughter, Number, Total and Average Live Weight, by State and U.S.	5
Commercial Hog Slaughter, Number, Total and Average Live Weight, by State and U.S.	6
Commercial Sheep and Lamb Slaughter, Number, Total and Average Live Weight, by State and U.S.	7
Federally Inspected Classification of Number and Average Dressed Weight, by Species and Class and U.S.	8
Federally Inspected Slaughter by Species and Class, by Region and U.S.	9
Federally Inspected Percent of Total Commercial, by Species, U.S.	11
Reliability Statement.....	18
Types of Livestock Slaughter Plants	19
Terms and Definitions	20
Information Contacts	20

Commercial Red Meat Production: United States ¹

Type	Jun 2008	May 2009	Jun 2009	Jun 09 % of		Jan - Jun ²		
				Jun 2008	May 2009	2008	2009	09 as % of 08
	<i>Million Pounds</i>	<i>Million Pounds</i>	<i>Million Pounds</i>	<i>Percent</i>	<i>Percent</i>	<i>Million Pounds</i>	<i>Million Pounds</i>	<i>Percent</i>
Beef	2,263.4	2,179.7	2,288.7	101	105	13,270.8	12,849.6	97
Veal	11.7	10.3	11.5	98	112	68.7	68.1	99
Pork	1,761.8	1,716.3	1,847.5	105	108	11,616.7	11,299.0	97
Lamb & Mutton	13.1	13.0	13.9	106	106	89.1	84.3	95
Total Red Meat ³	4,050.0	3,919.3	4,161.5	103	106	25,045.3	24,301.0	97

¹ Based on packers' dressed weights and excludes farm slaughter.

² Accumulated totals and percentages based on unrounded data.

³ Totals may not equal sum of the parts due to rounding.

Federally Inspected Red Meat Production: United States ¹

Type	Jun 2008	May 2009	Jun 2009	Jun 09 % of		Jan - Jun ²		
				Jun 2008	May 2009	2008	2009	09 as % of 08
	<i>Million Pounds</i>	<i>Million Pounds</i>	<i>Million Pounds</i>	<i>Percent</i>	<i>Percent</i>	<i>Million Pounds</i>	<i>Million Pounds</i>	<i>Percent</i>
Beef	2,234.2	2,151.3	2,260.1	101	105	13,090.4	12,667.1	97
Veal	11.5	10.0	11.2	98	112	67.2	66.6	99
Pork	1,747.9	1,704.6	1,834.2	105	108	11,529.8	11,220.8	97
Lamb & Mutton	12.5	12.3	12.9	103	105	85.6	80.2	94
Total Red Meat ³	4,006.2	3,878.1	4,118.4	103	106	24,773.1	24,034.7	97

¹ Based on packers' dressed weights and excludes farm slaughter.

² Accumulated totals and percentages based on unrounded data.

³ Totals may not equal sum of the parts due to rounding.

Livestock Slaughter: Number and Average Weights, United States ¹

Species	Unit	Jun 2008	May 2009	Jun 2009	Jun 09 % of		Jan - Jun ²		
					Jun 2008	May 2009	2008	2009	09 % of 08
					<i>Percent</i>	<i>Percent</i>			<i>Prcnt</i>
Cattle No.									
Fed. Insp.	Thou	2,911.7	2,805.7	2,936.4	101	105	17,049.3	16,294.2	96
Other	Thou	45.0	43.9	44.5	99	101	278.4	284.4	102
Comm'l. ³	Thou	2,956.6	2,849.6	2,981.0	101	105	17,327.7	16,578.6	96
Live Wt/Hd									
Fed. Insp.	Lbs	1,263	1,266	1,272	101	100	1,272	1,290	101
Other	Lbs	1,137	1,135	1,123	99	99	1,143	1,137	100
Comm'l.	Lbs	1,261	1,264	1,269	101	100	1,270	1,288	101
Calves No.									
Fed. Insp.	Thou	74.2	64.1	76.0	102	119	424.6	442.7	104
Other	Thou	1.1	1.0	1.2	106	119	6.7	6.3	94
Comm'l. ³	Thou	75.3	65.1	77.2	102	119	431.3	449.0	104
Live Wt/Hd									
Fed. Insp.	Lbs	265	266	249	94	94	270	258	95
Other	Lbs	397	429	401	101	94	403	408	101
Comm'l.	Lbs	267	268	251	94	94	272	260	95
Hogs No.									
Fed. Insp.	Thou	8,800.6	8,379.3	9,101.0	103	109	57,042.7	55,093.0	97
Other	Thou	82.5	71.7	80.0	97	112	499.2	458.3	92
Comm'l. ³	Thou	8,883.1	8,451.0	9,180.9	103	109	57,541.9	55,551.3	97
Live Wt/Hd									
Fed. Insp.	Lbs	266	272	270	101	99	270	272	101
Other	Lbs	233	228	232	99	102	241	237	99
Comm'l.	Lbs	266	271	269	101	99	270	271	101
Sheep&Lambs No.									
Fed. Insp.	Thou	180.7	167.0	185.1	102	111	1,205.4	1,122.2	93
Other	Thou	11.7	17.7	17.9	153	101	70.4	86.2	123
Comm'l. ³	Thou	192.4	184.7	203.0	106	110	1,275.8	1,208.4	95
Live Wt/Hd									
Fed. Insp.	Lbs	139	147	140	101	95	142	143	100
Other	Lbs	104	84	105	101	124	101	97	96
Comm'l.	Lbs	137	141	137	100	97	140	140	100
Goats No.									
Fed. Insp.	Thou	53.5	49.7	57.2	107	115	311.1	309.9	100
Other	Thou	15.7	13.4	12.8	81	95	89.6	78.7	88
Comm'l. ³	Thou	69.2	63.1	70.0	101	111	400.7	388.7	97
Live Wt/Hd									
Fed. Insp.	Lbs	61	60	60	98	100	62	61	99
Other	Lbs	63	71	71	113	100	67	71	105
Comm'l.	Lbs	62	63	62	101	100	63	63	100
Bison No.									
Fed. Insp.	Thou	4.8	4.4	4.4	91	100	28.9	26.5	92
Other	Thou	1.4	1.2	1.2	89	101	8.4	7.9	95
Comm'l. ³	Thou	6.1	5.6	5.6	91	100	37.3	34.4	92

¹ Excludes slaughter on farms.

² Accumulated totals and percentages based on unrounded data.

³ Totals may not equal sum of the parts due to rounding.

Commercial Red Meat Production: By State and United States ¹

State	Jun 2008	May 2009	Jun 2009	Jun 09 as % of ²	
				Jun 2008	May 2009
	<i>Million Pounds</i>	<i>Million Pounds</i>	<i>Million Pounds</i>	<i>Percent</i>	<i>Percent</i>
AL	2.1	1.6	2.0	95	124
AK					
AZ	34.0	30.4	31.6	93	104
AR	5.8	4.2	5.7	98	138
CA	135.4	137.8	146.9	109	107
CO	196.1	162.1	175.4	89	108
DE-MD	2.9	3.0	3.3	113	110
FL	8.2	8.4	8.3	101	100
GA	12.5	10.2	12.0	97	118
HI	0.9	0.8	0.8	94	104
ID	20.2	18.5	19.1	94	103
IL	238.3	211.6	232.3	97	110
IN	126.2	128.8	141.8	112	110
IA	527.3	515.7	564.5	107	109
KS	436.2	454.6	480.2	110	106
KY	42.2	41.1	45.5	108	111
LA	0.5	0.5	0.5	104	100
MI	44.5	43.0	44.4	100	103
MN	205.3	196.2	210.6	103	107
MS	1.2	0.8	1.7	138	209
MO	126.0	133.5	138.2	110	104
MT	1.7	0.8	1.0	57	116
NE	620.3	587.5	612.3	99	104
NV	0.1	0.1	0.1	123	108
N ENG ³	1.1	1.2	1.4	131	116
NJ	3.5	4.0	4.4	126	109
NM	0.4	0.4	0.3	82	96
NY	3.0	2.3	2.7	90	119
NC	186.1	188.3	201.8	108	107
ND	2.1	2.3	2.6	126	116
OH	26.2	22.4	25.1	96	112
OK	88.1	94.8	93.0	105	98
OR	4.6	4.1	4.8	105	118
PA	105.2	102.9	107.4	102	104
SC	19.7	18.8	18.9	96	100
SD	80.3	68.8	73.5	91	107
TN	15.9	15.1	16.2	102	107
TX	457.4	454.0	463.0	101	102
UT	44.4	34.6	36.8	83	106
VA	36.7	32.9	31.1	85	95
WA	64.9	67.2	75.1	116	112
WV	0.3	0.4	0.4	121	86
WI	121.6	113.2	124.5	102	110
WY	0.5	0.5	0.5	99	98
US	4,050.0	3,919.3	4,161.5	103	106

¹ Includes total beef, veal, pork, lamb, and mutton.

² Percentages based on unrounded data.

³ N ENG includes CT, ME, MA, NH, RI, and VT.

**Commercial Cattle Slaughter: By State and United States,
June 2008 and 2009¹**

State	Number Slaughtered		Total Live Weight		Average Live Weight	
	2008	2009	2008	2009	2008	2009
	<i>1,000 Head</i>	<i>1,000 Head</i>	<i>1,000 Pounds</i>	<i>1,000 Pounds</i>	<i>Pounds</i>	<i>Pounds</i>
AL	0.6	0.7	567	626	987	940
AK						
AZ	42.4	46.4	58,703	58,182	1,387	1,259
AR	0.8	0.9	732	816	962	959
CA	128.8	145.0	164,582	183,655	1,294	1,285
CO	236.0	211.6	302,610	269,634	1,283	1,275
DE-MD	3.3	3.7	4,255	4,817	1,304	1,299
FL						
GA		21.7		21,516		994
HI	0.9	0.9	1,066	1,006	1,177	1,121
ID	28.1	26.3	34,405	32,707	1,239	1,260
IL						
IN	3.0	3.2	3,205	3,353	1,056	1,058
IA						
KS	537.9	588.5	676,959	744,963	1,259	1,266
KY	1.2	1.5	1,128	1,501	939	979
LA	0.6	0.6	461	427	769	732
MI	51.3	51.7	69,425	70,464	1,360	1,373
MN	69.2	60.8	94,454	83,079	1,372	1,376
MS	0.1	0.2	63	114	723	536
MO	7.2	7.3	8,423	8,690	1,178	1,203
MT	2.1	1.2	2,423	1,381	1,165	1,180
NE	633.0	601.0	810,142	789,364	1,281	1,315
NV	0.1	0.2	143	180	1,159	962
N ENG ²	1.1	1.3	1,214	1,382	1,112	1,051
NJ	2.1	3.0	2,326	3,438	1,100	1,168
NM	0.4	0.4	457	487	1,076	1,101
NY	2.2	2.6	2,654	3,042	1,203	1,185
NC	19.0	19.0	22,282	21,975	1,176	1,160
ND	1.1	1.6	1,310	1,819	1,227	1,167
OH	9.9	8.8	11,694	10,532	1,194	1,204
OK	2.4	2.5	2,702	2,798	1,116	1,100
OR	3.0	3.4	3,614	3,907	1,249	1,203
PA	81.0	82.2	100,673	100,964	1,253	1,244
SC	13.7	12.4	15,066	13,897	1,107	1,128
SD						
TN	2.2	2.7	1,822	2,189	849	835
TX	603.5	608.8	731,819	743,788	1,216	1,224
UT	56.1		70,589		1,261	
VA	0.7	0.9	710	873	1,007	1,015
WA	84.0	96.0	105,375	120,963	1,262	1,266
WV	0.3	0.3	385	413	1,257	1,298
WI	139.1	146.6	185,105	195,242	1,344	1,344
WY	0.6	0.7	728	748	1,198	1,121
US ³	2,956.6	2,981.0	3,718,140	3,772,109	1,261	1,269

¹ Includes slaughter under Federal inspection and other Commercial slaughter, excludes farm slaughter.

² N ENG includes CT, ME, MA, NH, RI, and VT.

³ States with no data printed are still included in the US total, data not printed to avoid disclosing individual operations. Accumulated totals and percentages based on unrounded data.

**Commercial Calf Slaughter: By State and United States,
June 2008 and 2009 ¹**

State	Number Slaughtered		Total Live Weight		Average Live Weight	
	2008	2009	2008	2009	2008	2009
	<i>1,000 Head</i>	<i>1,000 Head</i>	<i>1,000 Pounds</i>	<i>1,000 Pounds</i>	<i>Pounds</i>	<i>Pounds</i>
AL						
AK						
AZ						
AR						
CA	15.1	19.6	1,746	2,087	117	108
CO						
DE-MD	0.2	0.2	49	64	263	276
FL		0.1		25		438
GA	0.1	0.1	42	58	457	445
HI						
ID						
IL	5.5	2.1	1,295	843	236	407
IN						
IA						
KS						
KY						
LA	0.4	0.4	176	180	499	506
MI	1.6	1.7	685	749	431	439
MN						
MS		0.1		22		321
MO						
MT						
NE						
NV						
N ENG ²	0.1	3.4	34	314	275	94
NJ	4.7	5.9	1,984	2,543	421	428
NM	1.4		124		87	
NY	17.2	10.5	1,961	1,073	118	105
NC	0.1	0.1	62	54	455	521
ND						
OH	4.6	9.1	1,982	2,260	428	248
OK						
OR						
PA	10.7	11.0	4,303	4,535	403	414
SC						
SD						
TN	0.1		37		473	
TX	1.1	2.7	482	470	455	171
UT						
VA						
WA						
WV						
WI						
WY						
US ³	75.3	77.2	19,832	19,222	267	251

¹ Includes slaughter under Federal inspection and other Commercial slaughter, excludes farm slaughter.

² N ENG includes CT, ME, MA, NH, RI, and VT.

³ States with no data printed are still included in the US total, data not printed to avoid disclosing individual operations. Accumulated totals and percentages based on unrounded data.

**Commercial Hog Slaughter: By State and United States,
June 2008 and 2009¹**

State	Number Slaughtered		Total Live Weight		Average Live Weight	
	2008	2009	2008	2009	2008	2009
	<i>1,000 Head</i>	<i>1,000 Head</i>	<i>1,000 Pounds</i>	<i>1,000 Pounds</i>	<i>Pounds</i>	<i>Pounds</i>
AL	7.5	6.9	3,261	2,970	438	429
AK		0.1		13		230
AZ	0.1	0.1	36	16	260	256
AR	17.9	17.4	8,244	7,963	461	458
CA	211.9	217.8	49,975	53,761	236	247
CO	0.6	0.8	159	226	256	274
DE-MD	1.3	1.4	290	306	218	212
FL	7.8	6.3	915	859	117	137
GA	9.9	6.6	2,321	1,623	235	245
HI	1.7	1.5	361	324	217	222
ID	11.2	9.6	2,782	2,445	249	256
IL	835.2	772.4	229,021	215,555	274	279
IN	632.9	702.5	164,029	184,474	259	263
IA	2,444.7	2,597.7	650,482	700,405	266	270
KS						
KY						
LA	1.0	0.9	192	177	186	191
MI	11.1	10.2	4,090	3,618	368	354
MN	786.7	827.9	203,661	217,796	259	263
MS	5.6	7.4	1,688	2,289	300	310
MO	597.7	641.7	160,647	176,994	269	276
MT	1.3	0.7	317	173	251	247
NE	593.2	612.1	156,799	164,073	265	268
NV						
N ENG ²	1.7	1.8	342	369	206	206
NJ	8.9	8.7	861	833	97	96
NM	0.1		22		257	
NY	2.8	2.4	513	452	186	192
NC	925.4	1,006.4	232,521	253,294	251	252
ND	7.9	8.9	1,984	2,245	250	254
OH	93.2	89.6	25,439	24,562	274	275
OK	417.1	431.1	114,563	120,171	275	279
OR	14.1	13.6	3,456	3,466	248	256
PA	233.8	242.8	58,234	61,402	249	253
SC						
SD	372.7	331.0	94,825	85,711	255	259
TN	46.2	47.6	22,105	22,284	479	469
TX	35.3	33.2	8,291	8,170	235	247
UT	6.7	4.8	1,254	1,011	187	211
VA	184.3	153.8	47,891	40,522	260	264
WA	2.8	2.2	510	467	183	211
WV	0.5	0.4	120	97	234	227
WI	58.8	55.2	26,537	24,213	459	444
WY	0.2	0.2	66	45	267	258
US ³	8,883.1	9,180.9	2,358,556	2,470,317	266	269

¹ Includes slaughter under Federal inspection and other Commercial slaughter, excludes farm slaughter.

² N ENG includes CT, ME, MA, NH, RI, and VT.

³ States with no data printed are still included in the US total, data not printed to avoid disclosing individual operations. Accumulated totals and percentages based on unrounded data.

**Commercial Sheep and Lamb Slaughter: By State and United States,
June 2008 and 2009¹**

State	Number Slaughtered		Total Live Weight		Average Live Weight	
	2008	2009	2008	2009	2008	2009
	<i>1,000 Head</i>	<i>1,000 Head</i>	<i>1,000 Pounds</i>	<i>1,000 Pounds</i>	<i>Pounds</i>	<i>Pounds</i>
AL						
AK						
AZ		0.1		15		118
AR	0.1		6		111	
CA						
CO	68.7	63.6	10,790	10,450	157	165
DE-MD	3.1	3.8	294	359	93	94
FL	0.2	0.2	13	12	54	50
GA	0.3	0.2	27	15	89	86
HI		0.1		12		152
ID	0.6	0.2	76	32	118	136
IL						
IN	2.1	3.0	227	326	109	110
IA	20.3	30.9	2,846	4,662	140	151
KS	0.2	0.2	22	25	110	107
KY	1.1	1.0	141	128	128	128
LA	0.3	0.5	17	29	64	62
MI	15.2	15.7	1,912	1,981	126	127
MN	1.1	2.1	131	306	115	147
MS		0.1		3		57
MO	0.4	0.5	50	59	114	116
MT	0.3	0.2	30	17	109	103
NE	0.1	0.1	17	12	144	138
NV	0.1		10		132	
N ENG ²	1.9	3.2	191	307	101	95
NJ	11.3	12.5	985	975	88	78
NM	1.5	1.1	167	154	143	145
NY	2.5	2.8	222	259	87	93
NC	0.7	0.8	48	64	70	77
ND	0.1		6		106	
OH	1.1	1.0	115	100	104	104
OK	0.1	0.2	13	16	97	96
OR	2.0	2.0	269	276	135	140
PA	4.2	4.1	417	395	100	97
SC		0.1		11		83
SD	0.3	0.3	39	36	124	125
TN	1.1	1.4	77	93	70	68
TX	2.8	10.2	201	1,036	73	102
UT	2.4	3.1	331	429	141	138
VA	1.1	1.2	101	118	95	97
WA	0.5	0.6	98	104	181	161
WV	0.3		44		138	
WI	1.0	1.0	149	140	143	137
WY	0.1	0.1	15	16	148	164
US ³	192.4	203.0	26,240	27,737	137	137

¹ Includes slaughter under Federal inspection and other Commercial slaughter, excludes farm slaughter.

² N ENG includes CT, ME, MA, NH, RI, and VT.

³ States with no data printed are still included in the US total, data not printed to avoid disclosing individual operations. Accumulated totals and percentages based on unrounded data.

**Classification of Livestock Slaughtered Under Federal Inspection:
United States**

Item	Jun 2008	May 2009	Jun 2009	Jan - Jun ¹		Jun 2008	May 2009	Jun 2009	Jan - Jun ¹	
				2008	2009				2008	2009
	<i>1,000 Head</i>	<i>1,000 Head</i>	<i>1,000 Head</i>	<i>1,000 Head</i>	<i>1,000 Head</i>	<i>Percent of Total</i>	<i>Percent of Total</i>	<i>Percent of Total</i>	<i>Percent of Total</i>	<i>Percent of Total</i>
Class ²										
Cattle										
Steers	1,553	1,469	1,525	8,693	8,164	53.3	52.4	51.9	51.0	50.1
Heifers	820	817	850	5,087	4,863	28.2	29.1	28.9	29.8	29.8
All Cows	485	470	511	2,979	2,997	16.7	16.8	17.4	17.5	18.4
Dairy Cows	181	212	256	1,260	1,445	6.2	7.5	8.7	7.4	8.9
Other Cows	304	259	255	1,720	1,552	10.5	9.2	8.7	10.1	9.5
Bulls	53	49	50	290	271	1.8	1.7	1.7	1.7	1.7
Total ¹	2,912	2,806	2,936	17,049	16,294	100.0	100.0	100.0	100.0	100.0
Calves & Vealers	74	64	76	425	443	100.0	100.0	100.0	100.0	100.0
Hogs										
Barrow & Gilts	8,458	8,105	8,779	55,025	53,324	96.1	96.7	96.5	96.5	96.8
Sows	305	240	285	1,783	1,558	3.5	2.9	3.1	3.1	2.8
Boars	37	35	37	235	211	0.4	0.4	0.4	0.4	0.4
Total ¹	8,801	8,379	9,101	57,043	55,093	100.0	100.0	100.0	100.0	100.0
Sheep										
Mature Sheep	11	10	12	60	59	5.9	6.2	6.5	5.0	5.2
Lambs & Yrlngs	170	157	173	1,146	1,063	94.1	93.8	93.5	95.0	94.8
Total ¹	181	167	185	1,205	1,122	100.0	100.0	100.0	100.0	100.0
Average Dressed Weight										
	<i>Pounds</i>	<i>Pounds</i>	<i>Pounds</i>	<i>Pounds</i>	<i>Pounds</i>					
Cattle	770	769	772	770	780					
Steers ³	826	823	832	823	839					
Heifers ³	751	754	756	760	775					
All Cows ³	603	612	607	619	616					
Bulls ³	905	889	891	894	883					
Calves & Vealers	157	158	149	160	152					
Hogs	199	204	202	202	204					
Barrow Gilts ⁴	195	201	198	199	201					
Sows ⁴	310	304	306	308	303					
Boars ⁴	208	193	200	209	198					
Sheep	70	74	70	71	72					
Mature Sheep ⁵	68	64	66	67	66					
Lamb & Yrlngs ⁵	70	74	70	71	72					

¹ Total and percentages based on unrounded data.

² Species totals and classification reported by food inspectors, Inspection Operations, FSIS.

³ Included in cattle average dressed weight.

⁴ Included in hog average dressed weight.

⁵ Included in sheep average dressed weight.

**Federally Inspected Slaughter: By Region and United States,
June 2009¹**

Standard Federal Regions	Cattle							Calves
	Total ²	Steers	Heifers	Cows			Bulls	Total
				All	Dairy	Other		
	<i>1,000 Head</i>	<i>1,000 Head</i>	<i>1,000 Head</i>	<i>1,000 Head</i>	<i>1,000 Head</i>	<i>1,000 Head</i>	<i>1,000 Head</i>	<i>1,000 Head</i>
1	1.1	0.5	0.2					3.3
2	5.4	1.8	0.3	2.8	2.5	0.3	0.5	16.4
3	85.4	34.3	9.5	40.1	31.9	8.2	1.6	11.3
4	69.4	1.7	0.7	56.8	14.7	42.1	10.2	0.3
5	345.8	168.2	44.5	124.8	69.5	55.3	8.3	21.2
6	606.7	326.5	180.5	89.1	26.0	63.1	10.6	2.7
7	1,235.2	702.0	468.5	55.8	1.5	54.3	8.8	
8	270.8	159.3	93.4					
9	191.8	81.5	13.9	93.4	81.4	12.0	3.1	19.5
10	124.7	49.6	38.3	32.6	21.3	11.3	4.3	
US ²	2,936.4	1,525.3	849.7	511.2	256.0	255.2	50.1	76.0
	Hogs				Sheep			
	Total ²	Barrows & Gilts	Sows	Boars	Total ²	Mature Sheep	Lambs & Yearlings	
	<i>1,000 Head</i>	<i>1,000 Head</i>	<i>1,000 Head</i>	<i>1,000 Head</i>	<i>1,000 Head</i>	<i>1,000 Head</i>	<i>1,000 Head</i>	<i>1,000 Head</i>
1	1.5	1.5			3.1	0.5	2.6	
2	10.8	10.6	0.1	0.1	14.6	1.6	13.0	
3	397.2	385.2	1.1	10.9	10.0	0.4	9.6	
4	1,344.4	1,277.6	65.4	1.4	3.7	1.1	2.5	
5	2,425.9	2,296.6	125.4	3.9	21.6	3.1	18.5	
6	473.4	450.6	22.8	0.1				
7	3,866.6	3,776.5	69.4	20.7	31.3	0.4	30.9	
8	342.8	342.2	0.6		66.1	1.8	64.3	
9	213.6	213.5	0.1					
10	24.7	24.6			2.2	0.2	2.0	
US ²	9,101.0	8,779.0	284.9	37.1	185.1	12.1	173.1	

¹ States included in regions are as follows: 1- CT, ME, NH, VT, MA, & RI; 2- NY & NJ; 3- DE-MD, PA, WV, & VA; 4- AL, FL, GA, KY, MS, NC, SC, & TN; 5- IL, IN, MI, MN, OH, & WI; 6- AR, LA, NM, OK, & TX; 7- IA, KS, MO, & NE; 8- CO, MT, ND, SD, UT, & WY; 9- AZ, CA, HI & NV; 10- AK, ID, OR, & WA.

² Regions with no data printed are still included in the US and Region total, data not printed to avoid disclosing individual operations. Totals may not add due to rounding.

**Federally Inspected Slaughter: By Region and United States,
January - June 2009¹**

Standard Federal Regions	Cattle							Calves
	Total ²	Steers	Heifers	Cows			Bulls	Total
				All	Dairy	Other		
	<i>1,000 Head</i>	<i>1,000 Head</i>	<i>1,000 Head</i>	<i>1,000 Head</i>	<i>1,000 Head</i>	<i>1,000 Head</i>	<i>1,000 Head</i>	<i>1,000 Head</i>
1	6.0	2.5	1.2					14.9
2	30.5	10.2	1.8	16.1	13.8	2.3	2.4	108.7
3	479.7	192.7	45.7	233.0	185.4	47.6	8.2	66.2
4	395.8	10.0	3.7	326.6	78.5	248.1	55.6	1.9
5	1,976.5	874.0	263.3	792.6	430.9	361.7	46.6	111.0
6	3,357.0	1,762.9	1,023.9	506.5	130.5	376.0	63.7	17.0
7	6,740.6	3,748.0	2,610.3	339.4	9.8	329.7	42.9	
8	1,534.2	793.8	634.0					
9	1,085.0	511.5	67.0	489.1	434.1	55.0	17.4	116.4
10	688.9	258.1	211.9	197.4	122.6	74.8	21.5	
US ²	16,294.2	8,163.6	4,862.7	2,997.4	1,445.3	1,552.2	270.5	442.7
	Hogs				Sheep			
	Total ²	Barrows & Gilts	Sows	Boars	Total ²	Mature Sheep	Lambs & Yearlings	
	<i>1,000 Head</i>	<i>1,000 Head</i>	<i>1,000 Head</i>	<i>1,000 Head</i>	<i>1,000 Head</i>	<i>1,000 Head</i>	<i>1,000 Head</i>	<i>1,000 Head</i>
1	6.5	6.3	0.1	0.1	17.0	2.0	15.0	
2	57.8	56.8	0.5	0.5	81.5	8.3	73.2	
3	2,501.5	2,435.8	7.4	58.3	55.7	2.5	53.1	
4	8,016.1	7,589.9	416.4	9.8	19.9	5.9	14.0	
5	14,256.0	13,583.0	651.7	21.3	139.4	16.6	122.8	
6	2,873.5	2,747.1	125.2	1.2				
7	23,561.9	23,088.3	353.8	119.8	171.6	2.1	169.5	
8	2,407.4	2,405.3	2.0	0.1	476.8	10.9	465.9	
9	1,266.7	1,266.1	0.5	0.1				
10	145.7	145.2	0.4		11.4	1.1	10.3	
US ²	55,093.0	53,323.8	1,558.0	211.2	1,122.2	58.8	1,063.4	

¹ States included in regions are as follows: 1- CT, ME, NH, VT, MA, & RI; 2- NY & NJ; 3- DE-MD, PA, WV, & VA; 4- AL, FL, GA, KY, MS, NC, SC, & TN; 5- IL, IN, MI, MN, OH, & WI; 6- AR, LA, NM, OK, & TX; 7- IA, KS, MO, & NE; 8- CO, MT, ND, SD, UT, & WY; 9- AZ, CA, HI & NV; 10- AK, ID, OR, & WA.

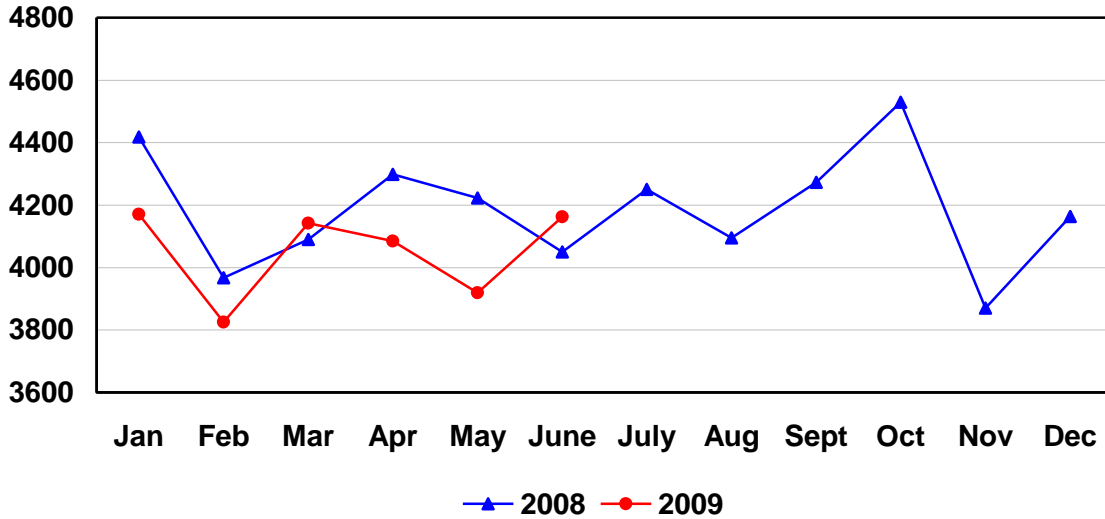
² Regions with no data printed are still included in the US and Region total, data not printed to avoid disclosing individual operations. Totals may not add due to rounding.

**Federally Inspected Slaughter: Percent of Total Commercial
Slaughter by Species, United States**

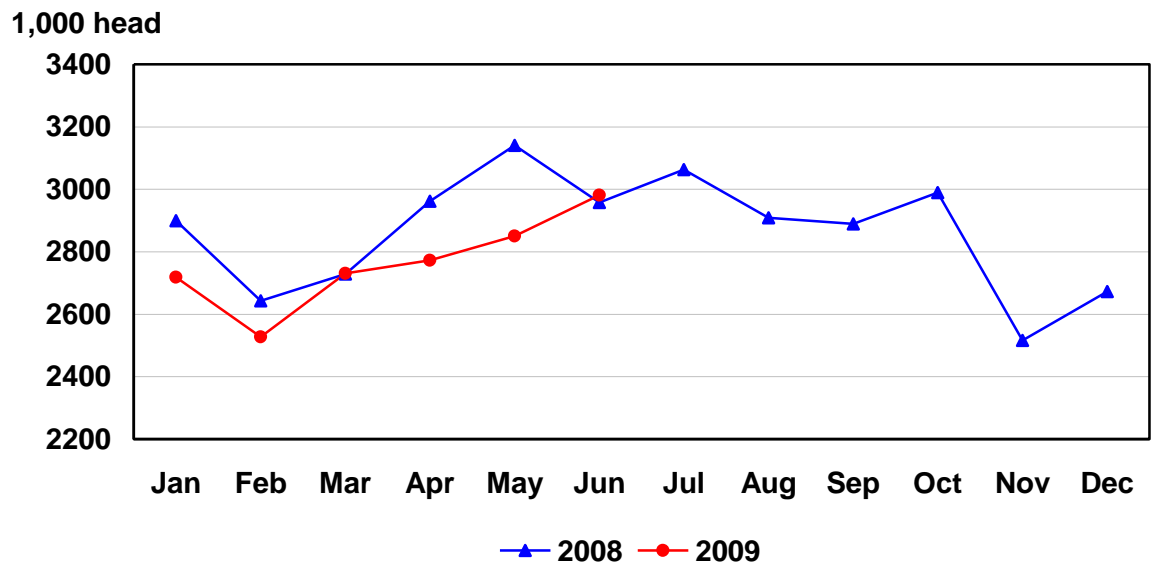
Species	Jun 2008	May 2009	Jun 2009	Jan - Jun	
				2008	2009
	<i>Percent</i>	<i>Percent</i>	<i>Percent</i>	<i>Percent</i>	<i>Percent</i>
Cattle	98.5	98.5	98.5	98.4	98.3
Calves	98.5	98.5	98.5	98.5	98.6
Hogs	99.1	99.2	99.1	99.1	99.2
Sheep	93.9	90.4	91.2	94.5	92.9

U.S. Monthly Commercial Red Meat Production

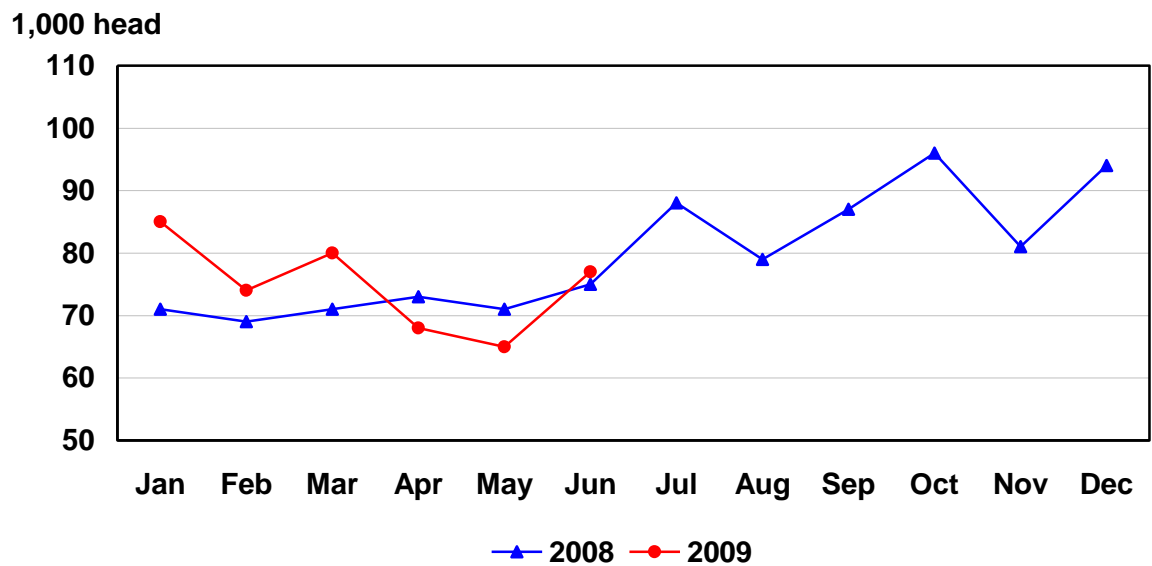
Million Pounds



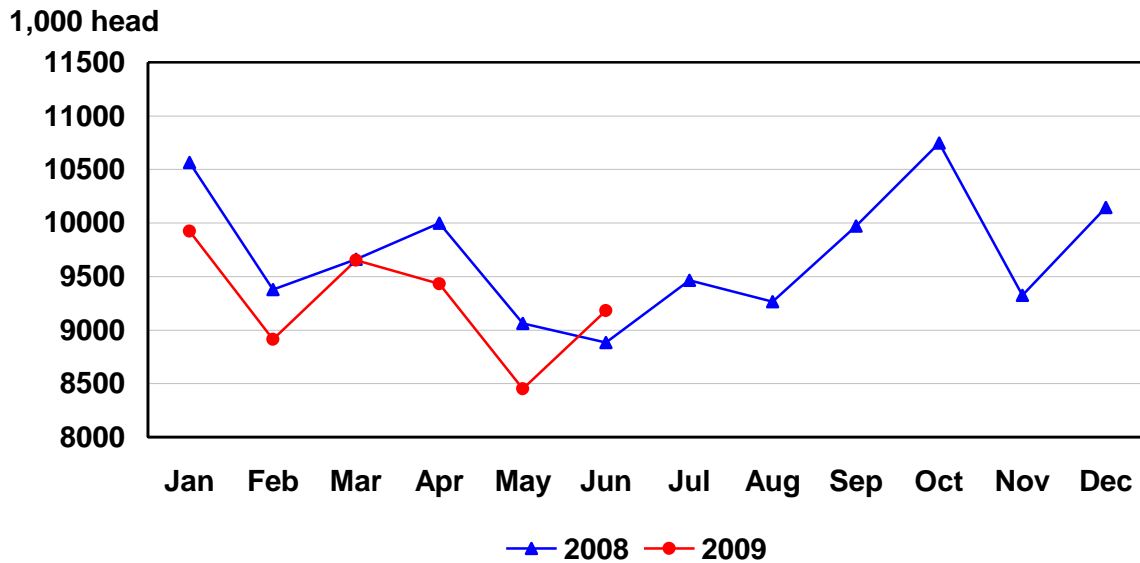
U.S. Monthly Commercial Slaughter Cattle



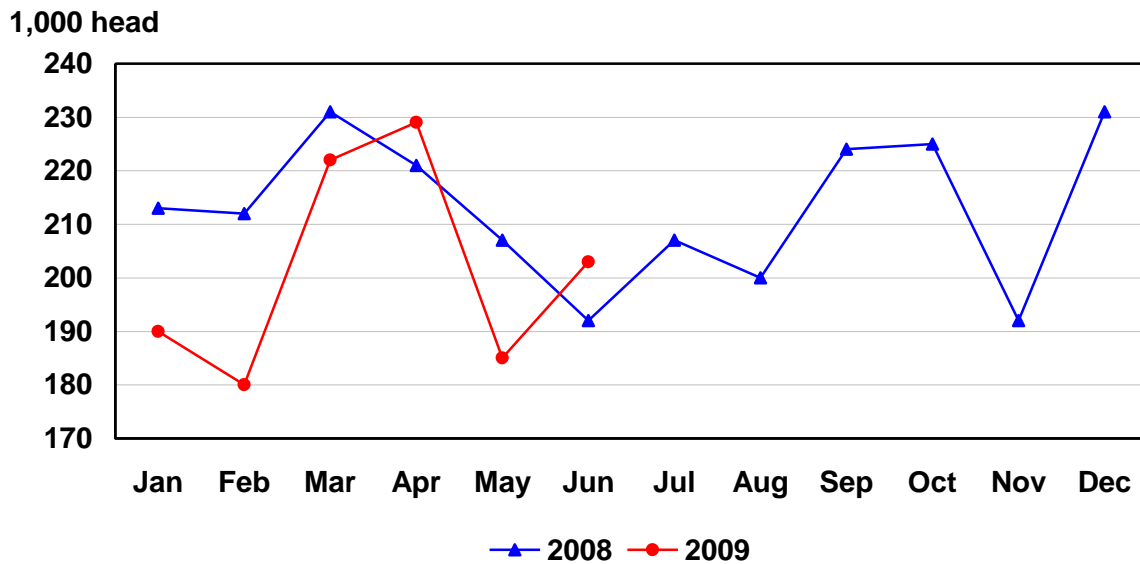
U.S. Monthly Commercial Slaughter Calves



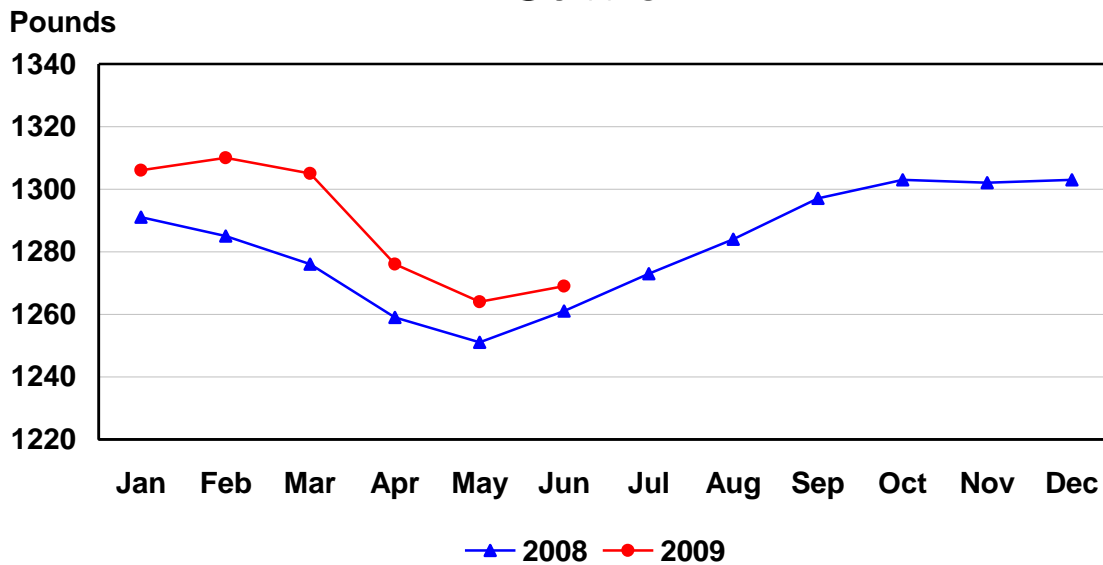
U.S. Monthly Commercial Slaughter Hogs



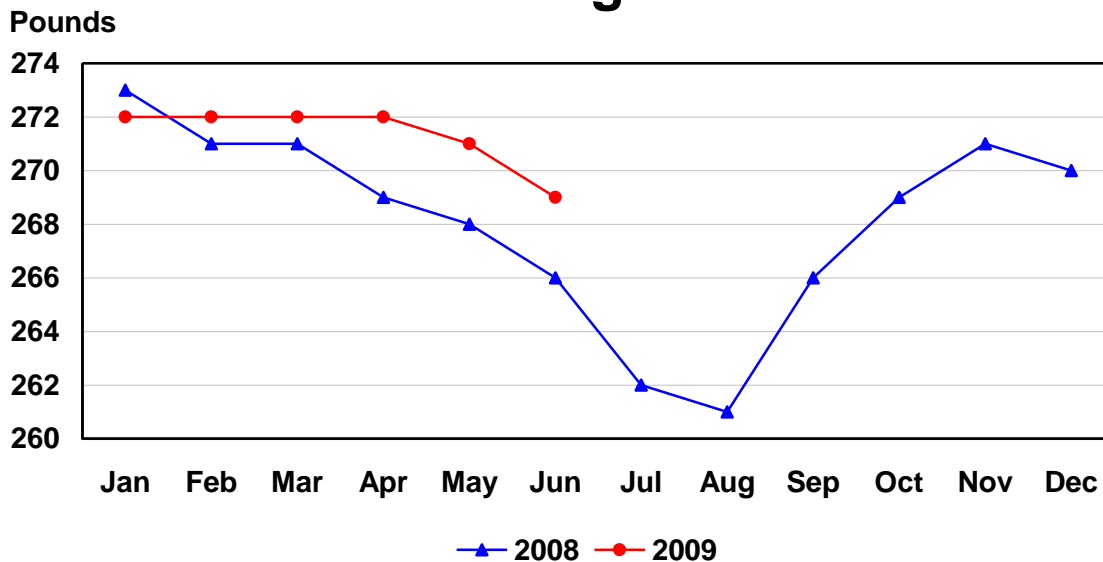
U.S. Monthly Commercial Slaughter Sheep



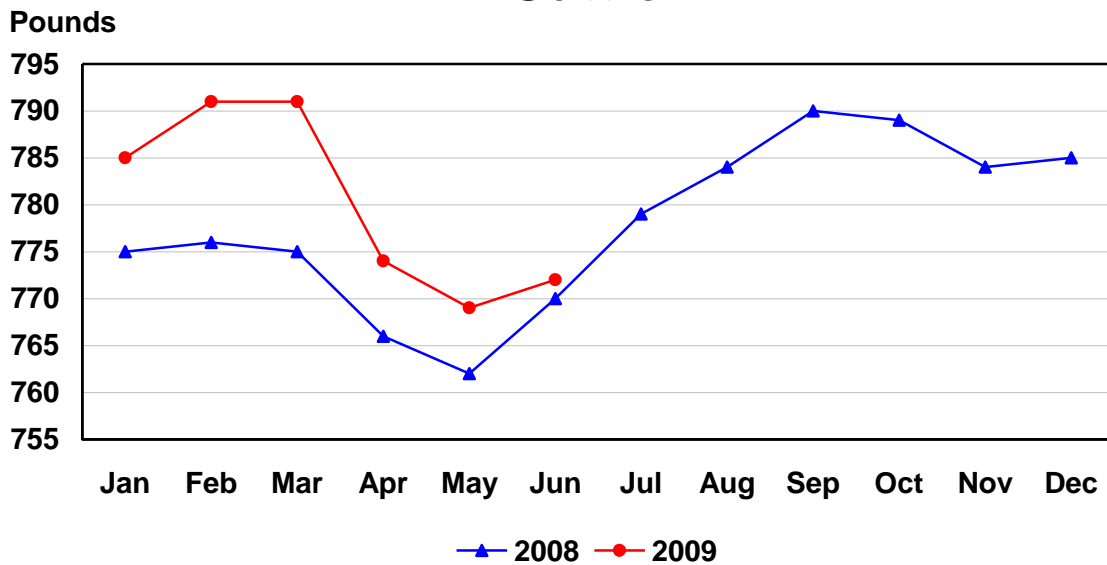
U.S. Monthly Commercial Slaughter Average Live Weight Cattle



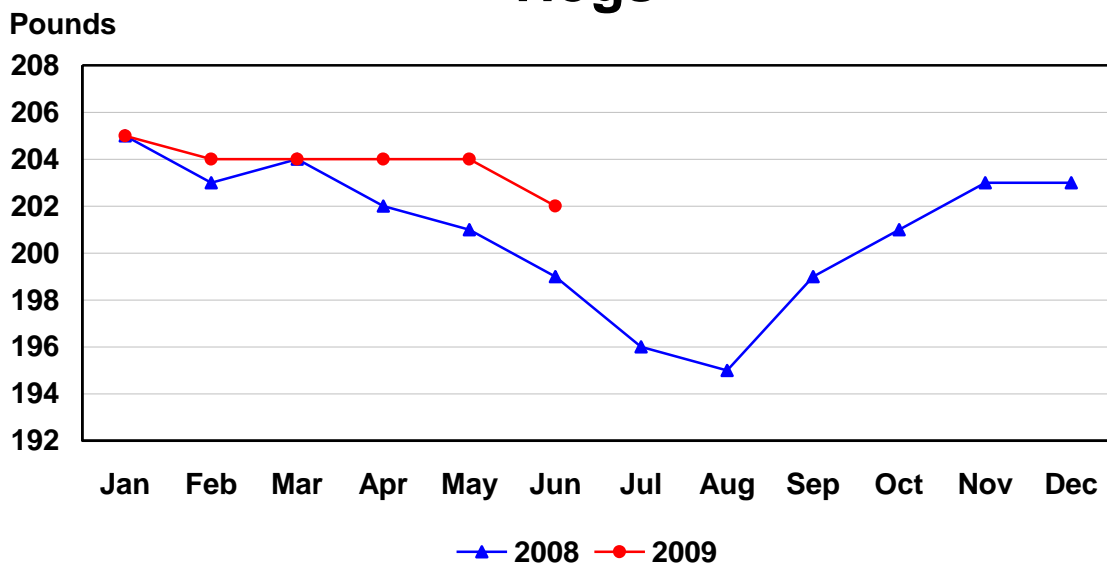
U.S. Monthly Commercial Slaughter Average Live Weight Hogs



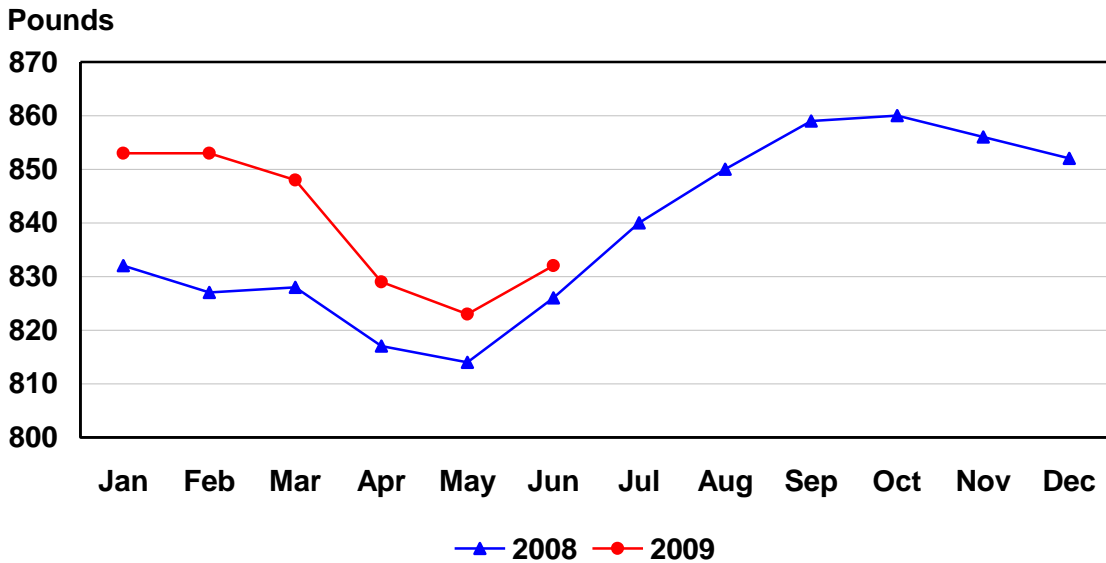
U.S. Monthly Federally Inspected Average Dressed Weight Cattle



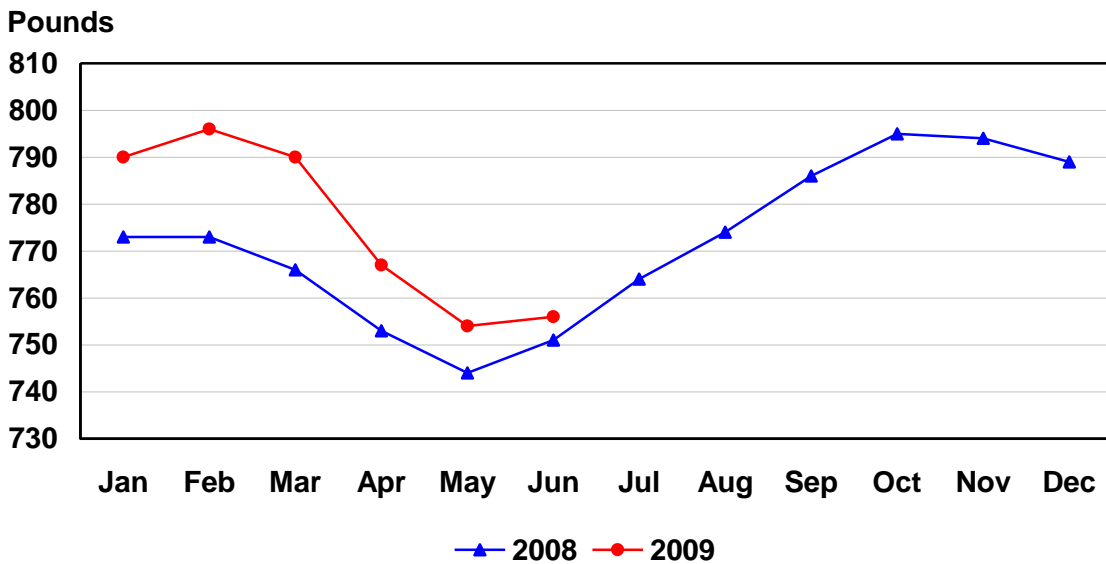
U.S. Monthly Federally Inspected Average Dressed Weight Hogs



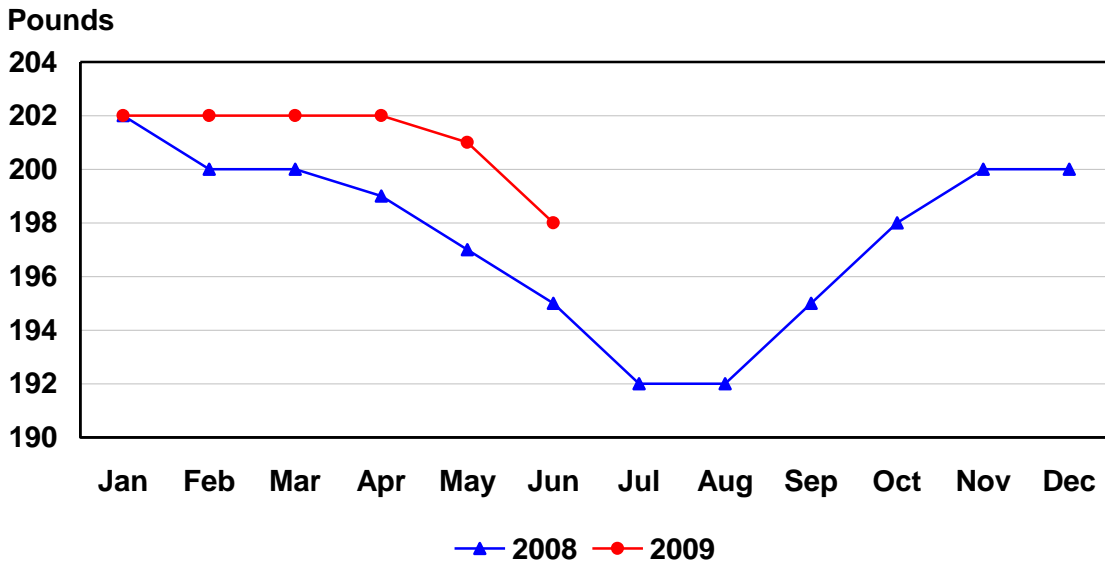
U.S. Monthly Federally Inspected Average Dressed Weight Steers



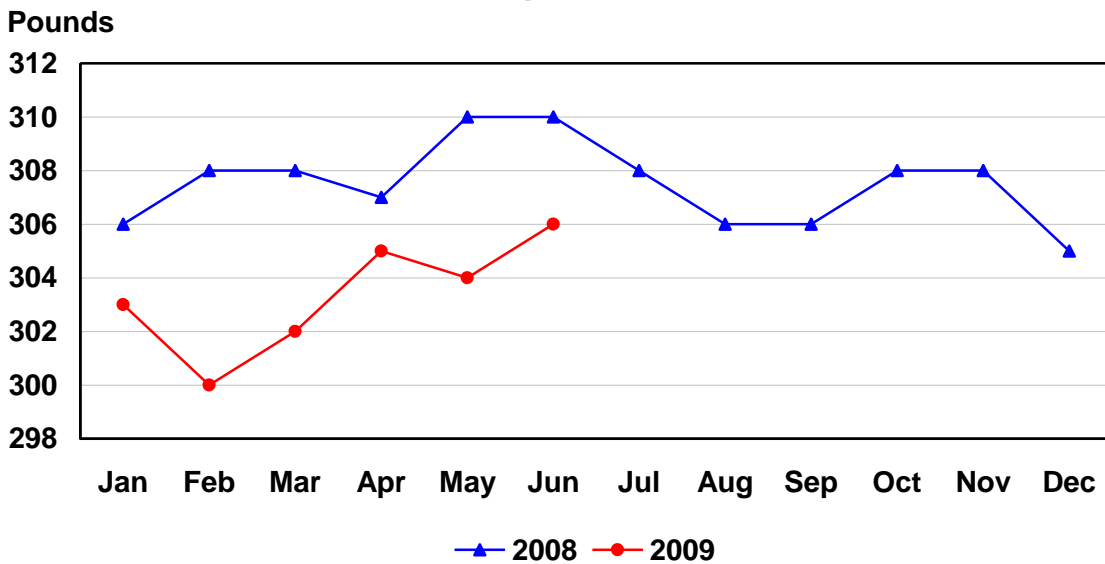
U.S. Monthly Federally Inspected Average Dressed Weight Heifers



U.S. Monthly Federally Inspected Average Dressed Weight Barrows and Gilts



U.S. Monthly Federally Inspected Average Dressed Weight Sows



Reliability of Livestock Slaughter Estimates

Data Sources: Primary data for the commercial livestock slaughter estimates are obtained from electronic reports completed by inspectors from the Food Safety and Inspection Service (FSIS), USDA, which provide daily counts of animals slaughtered in Federally Inspected (FI) plants, in addition to total live and dressed weights. These counts are combined with data from State-administered Non-Federally Inspected (NFI) slaughter plants to derive total commercial slaughter estimates. More than 95 percent of the total U.S. slaughter for any species is under Federal Inspection.

There are nearly 800 livestock slaughter plants in the U.S. operating under Federal Inspection and over 2,000 Non-Federally Inspected (State-inspected or custom-exempt) slaughter plants. Slaughter from State-inspected Talmedge-Aiken plants is included in FI totals (see Types of Plants, page 18). To prevent duplication in reporting between FI and NFI plants and assure all FI plants are included, certificates prepared by FSIS identifying operating status are constantly monitored

Revision Policy: Number of head slaughtered, live weights, and dressed weights are subject to revision the following month after the monthly release. Annual totals are published in the slaughter summary each March which includes any revisions made to current and previous year's published data. Revisions are generally the result of late reports received from slaughter plants and are usually less than one-half of one percent. No revisions will be made to the previous year's data after the publication of the annual summary in March.

Procedures and Reliability: The livestock slaughter data is obtained electronically on a daily basis and summarized approximately two weeks after the week of slaughter. An edit compares each plant's data with the historical data for that plant. Data are checked for unusual values for head kill, patterns of kill, average weights, and dressing percent, based on each plant's past operating profile. In addition, the edit provides a listing of missing reports for follow-up contact with FSIS. Average live and dressed weights and dressing percentages by State are compared with the previous weeks as an additional check. Fluctuations are frequently the result of plants permanently or temporarily closing and a shift in the species reported.

The FSIS District Veterinary Medical Specialists (DVMS) are contacted by e-mail or telephone for missing or potentially erroneous slaughter data. This assures that plants slaughtering a large number of head or several species are accounted for each week. Any corrections FSIS makes to the slaughter data are included in the summary.

Imputation may be necessary for incomplete reports. The imputation of live and dressed weights is based on the current week reported data of plants of similar size and location. Imputation for live and dressed weight data for cattle and hogs is less than 10 percent and 7 percent, respectively. The imputation for calves and sheep is more frequent and variable. If no data is received electronically or by other means, for plants slaughtering fewer than 50 total head weekly of only one species, data are imputed. The imputation of head for any plant is based on the historical data for that particular plant. The imputation of head slaughtered is rare but when necessary, the imputed head kill for missing plants usually is less than 1 percent of the U.S. head kill totals.

FI data are summarized weekly and accumulated to a monthly total for this release. These weekly totals are published by USDA's Agricultural Marketing Service (AMS) in **Livestock, Meat, Wool Market News, Weekly Summary, and Statistics** and are also available on the NASS website. NFI data are summarized monthly only.

Livestock slaughter estimates are based on a census of operating plants and therefore, have no sampling error. However, they may be subject to errors such as omissions, duplications and mistakes in reporting, recording and processing the data. These errors are minimized through rigid quality controls in the edit and summarization process, and a careful review of all reported data for consistency and reasonableness.

No data are published when an individual plant's data could be divulged. If not published, these data are still included in US and region totals. A review of the data is made annually to determine the publishable data.

Types of Livestock Slaughter Plants

There are generally **four types** of slaughtering plants.

- (1) **Federally Inspected (FI) Plants:** Plants that transport meat interstate must employ federal inspectors to assure compliance with USDA standards. Any State whose commercial plants operate entirely under federal inspection may still have custom-exempt establishments for which NFI estimates are made.
- (2) **Talmedge-Aiken (TA) Plants:** Slaughter plants in which USDA is responsible for inspection. However, federal inspection is carried out by State employees. These plants are considered to be federally inspected.
- (3) **Non-Federally Inspected (NFI) Plants:** Plants which sell and transport only intrastate. State inspectors assure compliance with individual State standards for these NFI plants. Mobile slaughtering units are excluded and are considered farm slaughter.
- (4) **Custom-Exempt Plants:** Plants that do not sell meat but operate on a custom basis only are custom-exempt. The animals and meat are not inspected, but the facilities must meet health standards. These are considered NFI plants and head kill is included in NFI totals.

Terms and Definitions Used for Livestock Slaughter Estimates

Average Live Wight: Excludes post-mortem condemnations.

Commercial Production: Includes slaughter and meat production in federally inspected and other plants, but excludes animals slaughtered on farms.

Dressed Weight: The weight of a chilled animal carcass. Beef with kidney knob in; veal with hide off; lamb and mutton with pluck out; pork with leaf fat and kidneys out, jowls on and head off.

Dressing Percent: Usually expressed as a percentage yield of chilled carcass in relation to the weight of the live animal on hoof. For example, a live hog that weighed 200 pounds on hoof and yielded a carcass weighing 140 pounds would have a dressing percentage of 70.

Food and Meat Inspection: Includes examination, checking, or testing of a carcass and/or meat against established government standards and involves checking the facility for cleanliness, health of animals, or parts of animals and quality of the meat produced.

Number of Head: Includes post-mortem condemnations.

Plant, Slaughter: An establishment where animals are killed and butchered.

Red Meat: Red meat production is the carcass weight after slaughter excluding condemnation and is comprised of beef, veal, pork, and lamb and mutton. The FI red meat production is equal to the total carcass weight after slaughter. The NFI meat production formula is (NFI head kill) X (live weight) X (FI dressing percentage) = NFI red meat production.

Slaughter: Killing and butchering of animals primarily for food.

Slaughter, Farm: Animals slaughtered on farms primarily for home consumption. Excludes custom slaughter for farmers at commercial establishments, but includes mobile slaughtering on farms. These estimates appear only in the annual slaughter release.

Total Live Weight: Excludes post-mortem condemnations.

Wholesome Meat Act: Legislation that specifies that all meat produced for sale in the U.S. must be inspected. Meat that is transported interstate must be inspected in compliance with Federal (USDA) Standards.

Information Contacts

Listed below are the commodity specialists in the Livestock Branch of the National Agricultural Statistics Service to contact for additional information.

Dan Kerestes, Chief, Livestock Branch.....	(202) 720-3570
Scott Hollis, Head, Livestock Section.....	(202) 690-2424
Jim Collom – Dairy Products	(202) 690-3236
Joe Gaynor – Dairy Products Prices.....	(202) 690-2168
Jason Hardegree – Cattle, Cattle on Feed.....	(202) 720-3040
Rex Patterson – Livestock Slaughter.....	(515) 284-4340
Mike Miller – Milk Production and Milk Cows.....	(202) 720-3278
Everett Olbert – Sheep and Goats	(202) 720-4751
Nicholas Streff – Hogs and Pigs.....	(202) 720-3106

ACCESS TO REPORTS!!

For your convenience, there are several ways to obtain NASS reports, data products, and services:

INTERNET ACCESS

All NASS reports are available free of charge on the worldwide Internet. For access, connect to the Internet and go to the NASS Home Page at: **www.nass.usda.gov**.

E-MAIL SUBSCRIPTION

All NASS reports are available by subscription free of charge direct to your e-mail address. Starting with the NASS Home Page at **www.nass.usda.gov**, under the right navigation, *Receive reports by Email*, click on **National** or **State**. Follow the instructions on the screen.

PRINTED REPORTS OR DATA PRODUCTS

CALL OUR TOLL-FREE ORDER DESK: 800-999-6779 (U.S. and Canada)
Other areas, please call 703-605-6220 FAX: 703-605-6900
(Visa, MasterCard, check, or money order acceptable for payment.)

ASSISTANCE

For **assistance** with general agricultural statistics or further information about NASS or its products or services, contact the **Agricultural Statistics Hotline** at **800-727-9540**, 7:30 a.m. to 4:00 p.m. ET, or e-mail: **nass@nass.usda.gov**.

The U.S. Department of Agriculture (USDA) prohibits discrimination in all its programs and activities on the basis of race, color, national origin, age, disability, and where applicable, sex, marital status, familial status, parental status, religion, sexual orientation, genetic information, political beliefs, reprisal, or because all or part of an individual's income is derived from any public assistance program. (Not all prohibited bases apply to all programs.) Persons with disabilities who require alternative means for communication of program information (Braille, large print, audiotape, etc.) should contact USDA's TARGET Center at (202) 720-2600 (voice and TDD).

To file a complaint of discrimination, write to USDA, Director, Office of Civil Rights, 1400 Independence Avenue, S.W., Washington, D.C. 20250-9410, or call (800) 795-3272 (voice) or (202) 720-6382 (TDD). USDA is an equal opportunity provider and employer.