

---

Released August 21, 2009, by the National Agricultural Statistics Service (NASS), Agricultural Statistics Board, U.S. Department of Agriculture. For information on *Livestock Slaughter* call Rex Patterson at (515)284-4340, office hours 7:00 a.m. to 4:00 p.m. CT.

## July Red Meat Production Below Previous Year Level

**Commercial red meat production** for the United States totaled 4.12 billion pounds in July, down 3 percent from the 4.25 billion pounds produced in July 2008.

**Beef production**, at 2.27 billion pounds, was 4 percent below the previous year. Cattle slaughter totaled 2.92 million head, down 5 percent from July 2008. The average live weight was up 9 pounds from the previous year, at 1,282 pounds.

**Veal production** totaled 10.8 million pounds, 12 percent below July a year ago. Calf slaughter totaled 79,900 head, down 9 percent from July 2008. The average live weight was down 13 pounds from last year, at 230 pounds.

**Pork production** totaled 1.83 billion pounds, down 1 percent from the previous year. Hog kill totaled 9.15 million head, down 3 percent from July 2008. The average live weight was up 5 pounds from the previous year, at 267 pounds.

**Lamb and mutton production**, at 13.9 million pounds, was up 2 percent from July 2008. Sheep slaughter totaled 207,400 head, slightly above last year. The average live weight was 135 pounds, up 3 pounds from July a year ago.

**January to July 2009 commercial red meat production** was 28.4 billion pounds, down 3 percent from 2008. Accumulated beef production was down 3 percent from last year, veal was down 3 percent, pork was down 3 percent from last year, and lamb and mutton production was down 4 percent.

**July 2008** contained 23 weekdays (including one holidays) and 4 Saturdays.

**July 2009** contained 23 weekdays (including one holidays) and 4 Saturdays.



# Contents

	<b>Page</b>
Red Meat Production, Commercial and FI, by Type, U.S. ....	1
Livestock Slaughter, Number and Average Weights, by Species and Type of Slaughter, U.S. ....	2
Commercial Red Meat Production, by State and U.S. ....	3
Commercial Cattle Slaughter, Number, Total and Average Live Weight, by State and U.S. ....	4
Commercial Calf Slaughter, Number, Total and Average Live Weight, by State and U.S. ....	5
Commercial Hog Slaughter, Number, Total and Average Live Weight, by State and U.S. ....	6
Commercial Sheep and Lamb Slaughter, Number, Total and Average Live Weight, by State and U.S. ....	7
Federally Inspected Classification of Number and Average Dressed Weight, by Species and Class and U.S. ....	8
Federally Inspected Slaughter by Species and Class, by Region and U.S. ....	9
Federally Inspected Percent of Total Commercial, by Species, U.S. ....	11
Reliability Statement.....	18
Types of Livestock Slaughter Plants .....	19
Terms and Definitions .....	20
Information Contacts .....	20



**Commercial Red Meat Production: United States <sup>1</sup>**

Type	Jul 2008	Jun 2009	Jul 2009	Jul 09 % of		Jan - Jul <sup>2</sup>		
				Jul 2008	Jun 2009	2008	2009	09 as % of 08
	<i>Million Pounds</i>	<i>Million Pounds</i>	<i>Million Pounds</i>	<i>Percent</i>	<i>Percent</i>	<i>Million Pounds</i>	<i>Million Pounds</i>	<i>Percent</i>
Beef	2,371.6	2,288.7	2,270.5	96	99	15,642.2	15,120.1	97
Veal	12.3	11.5	10.8	88	94	81.0	78.9	97
Pork	1,852.5	1,847.5	1,828.3	99	99	13,469.0	13,127.2	97
Lamb & Mutton	13.7	13.9	13.9	102	101	102.8	98.2	96
Total Red Meat <sup>3</sup>	4,250.1	4,161.5	4,123.6	97	99	29,295.0	28,424.5	97

<sup>1</sup> Based on packers' dressed weights and excludes farm slaughter.

<sup>2</sup> Accumulated totals and percentages based on unrounded data.

<sup>3</sup> Totals may not equal sum of the parts due to rounding.

**Federally Inspected Red Meat Production: United States <sup>1</sup>**

Type	Jul 2008	Jun 2009	Jul 2009	Jul 09 % of		Jan - Jul <sup>2</sup>		
				Jul 2008	Jun 2009	2008	2009	09 as % of 08
	<i>Million Pounds</i>	<i>Million Pounds</i>	<i>Million Pounds</i>	<i>Percent</i>	<i>Percent</i>	<i>Million Pounds</i>	<i>Million Pounds</i>	<i>Percent</i>
Beef	2,341.9	2,260.1	2,243.3	96	99	15,432.4	14,910.4	97
Veal	12.1	11.2	10.6	88	94	79.3	77.2	97
Pork	1,837.4	1,834.2	1,814.1	99	99	13,367.2	13,034.9	98
Lamb & Mutton	13.0	12.9	13.1	101	101	98.6	93.3	95
Total Red Meat <sup>3</sup>	4,204.3	4,118.4	4,081.0	97	99	28,977.4	28,115.7	97

<sup>1</sup> Based on packers' dressed weights and excludes farm slaughter.

<sup>2</sup> Accumulated totals and percentages based on unrounded data.

<sup>3</sup> Totals may not equal sum of the parts due to rounding.

**Livestock Slaughter: Number and Average Weights, United States <sup>1</sup>**

Species	Unit	Jul 2008	Jun 2009	Jul 2009	Jul 09 % of		Jan - Jul <sup>2</sup>		
					Jul 2008	Jun 2009	2008	2009	09 % of 08
					<i>Percent</i>	<i>Percent</i>			<i>Prcnt</i>
<b>Cattle No.</b>									
Fed. Insp.	Thou	3,017.1	2,936.4	2,878.1	95	98	20,066.4	19,172.3	96
Other	Thou	45.4	44.5	42.5	94	95	323.8	326.9	101
Comm'l. <sup>3</sup>	Thou	3,062.5	*2,980.9	2,920.6	95	98	20,390.2	19,499.2	96
<b>Live Wt/Hd</b>									
Fed. Insp.	Lbs	1,275	1,272	1,284	101	101	1,273	1,289	101
Other	Lbs	1,142	1,123	1,125	98	100	1,143	1,135	99
Comm'l.	Lbs	1,273	1,269	1,282	101	101	1,270	1,287	101
<b>Calves No.</b>									
Fed. Insp.	Thou	86.7	76.0	78.9	91	104	511.4	521.6	102
Other	Thou	1.1	1.2	1.0	93	88	7.8	7.3	94
Comm'l. <sup>3</sup>	Thou	87.9	77.2	79.9	91	104	519.2	528.9	102
<b>Live Wt/Hd</b>									
Fed. Insp.	Lbs	241	249	228	94	91	265	253	95
Other	Lbs	422	401	419	99	104	406	410	101
Comm'l.	Lbs	243	251	230	95	92	268	256	96
<b>Hogs No.</b>									
Fed. Insp.	Thou	9,373.1	9,101.0	9,061.7	97	100	66,415.8	64,154.7	97
Other	Thou	89.6	80.0	85.1	95	106	588.9	543.3	92
Comm'l. <sup>3</sup>	Thou	9,462.8	9,180.9	9,146.7	97	100	67,004.7	64,698.0	97
<b>Live Wt/Hd</b>									
Fed. Insp.	Lbs	263	270	268	102	99	269	271	101
Other	Lbs	234	232	233	100	100	240	237	99
Comm'l.	Lbs	262	269	267	102	99	269	271	101
<b>Sheep&amp;Lambs No.</b>									
Fed. Insp.	Thou	193.1	185.1	189.0	98	102	1,398.6	1,311.2	94
Other	Thou	14.0	17.9	18.4	131	103	84.4	104.6	124
Comm'l. <sup>3</sup>	Thou	207.1	203.0	207.4	100	102	1,482.9	1,415.7	95
<b>Live Wt/Hd</b>									
Fed. Insp.	Lbs	134	140	139	103	99	141	142	101
Other	Lbs	103	105	96	94	92	102	97	96
Comm'l.	Lbs	132	137	135	102	99	139	139	100
<b>Goats No.</b>									
Fed. Insp.	Thou	56.7	57.2	56.9	100	99	367.8	366.9	100
Other	Thou	15.0	12.8	13.1	88	103	104.6	91.9	88
Comm'l. <sup>3</sup>	Thou	71.7	70.0	70.1	98	100	472.4	458.8	97
<b>Live Wt/Hd</b>									
Fed. Insp.	Lbs	62	60	60	97	99	62	61	98
Other	Lbs	65	71	72	111	102	67	71	106
Comm'l.	Lbs	62	62	62	100	100	63	63	100
<b>Bison No.</b>									
Fed. Insp.	Thou	5.1	4.4	4.6	90	106	34.0	31.1	91
Other	Thou	1.1	1.2	1.0	98	86	9.4	9.0	95
Comm'l. <sup>3</sup>	Thou	6.2	5.6	5.7	92	101	43.5	40.1	92

\* Revised.

<sup>1</sup> Excludes slaughter on farms.

<sup>2</sup> Accumulated totals and percentages based on unrounded data.

<sup>3</sup> Totals may not equal sum of the parts due to rounding.

**Commercial Red Meat Production: By State and United States <sup>1</sup>**

State	Jul 2008	Jun 2009	Jul 2009	Jul 09 as % of <sup>2</sup>	
				Jul 2008	Jun 2009
	<i>Million Pounds</i>	<i>Million Pounds</i>	<i>Million Pounds</i>	<i>Percent</i>	<i>Percent</i>
AL	2.2	2.0	1.9	88	95
AK	0.1				
AZ	34.9	31.6	32.2	92	102
AR	5.7	5.7	5.1	90	89
CA	133.3	146.9	144.6	108	98
CO	198.3	175.4	178.8	90	102
DE-MD	2.9	3.3	3.0	105	90
FL	9.7	8.3	9.1	94	109
GA	13.4	12.0	11.2	83	93
HI	1.0	0.8	0.9	91	110
ID	20.2	19.1	20.1	99	105
IL	242.2	232.3	223.0	92	96
IN	137.8	141.8	144.6	105	102
IA	568.5	564.5	565.9	100	100
KS	474.6	480.2	476.2	100	99
KY	45.6	45.5	43.4	95	95
LA	0.5	0.5	0.5	101	100
MI	44.4	44.4	44.9	101	101
MN	215.2	210.6	215.2	100	102
MS	1.3	1.7	1.9	152	114
MO	135.5	138.2	135.5	100	98
MT	1.3	1.0	1.3	101	133
NE	650.4	612.3	624.9	96	102
NV	0.1	0.1	0.1	78	94
N ENG <sup>3</sup>	1.2	1.4	1.4	120	102
NJ	3.8	4.4	4.0	105	91
NM	0.4	0.3	0.3	77	96
NY	3.3	2.7	2.5	77	93
NC	195.7	201.8	202.5	104	100
ND	2.3	2.6	2.4	105	93
OH	27.4	25.1	26.5	97	106
OK	89.0	93.0	93.8	105	101
OR	4.8	4.8	4.8	98	99
PA	112.5	107.4	103.4	92	96
SC	20.1	18.9	18.8	93	99
SD	77.8	73.5	59.2	76	81
TN	16.2	16.2	17.9	110	110
TX	474.9	463.0	442.2	93	96
UT	48.0	36.8	35.0	73	95
VA	36.7	31.1	30.6	83	98
WA	71.3	75.1	73.9	104	98
WV	0.4	0.4	0.4	107	118
WI	124.6	124.5	118.9	95	95
WY	0.6	0.5	0.6	95	113
US	4,250.1	4,161.5	4,123.6	97	99

<sup>1</sup> Includes total beef, veal, pork, lamb, and mutton.

<sup>2</sup> Percentages based on unrounded data.

<sup>3</sup> N ENG includes CT, ME, MA, NH, RI, and VT.

**Commercial Cattle Slaughter: By State and United States,  
July 2008 and 2009 <sup>1</sup>**

State	Number Slaughtered		Total Live Weight		Average Live Weight	
	2008	2009	2008	2009	2008	2009
	<i>1,000 Head</i>	<i>1,000 Head</i>	<i>1,000 Pounds</i>	<i>1,000 Pounds</i>	<i>Pounds</i>	<i>Pounds</i>
AL	0.4	0.6	374	547	908	909
AK	0.1	0.1	99	66	1,040	1,054
AZ	45.2	44.9	61,689	57,120	1,370	1,277
AR	0.7	0.7	717	728	1,044	987
CA	127.5	141.3	159,381	178,492	1,268	1,281
CO	232.5	209.7	304,328	273,359	1,310	1,304
DE-MD	3.2	3.3	4,061	4,297	1,288	1,301
FL						
GA		20.5		20,195		987
HI	1.1	1.0	1,229	1,160	1,138	1,148
ID	27.3	27.6	33,427	34,207	1,238	1,261
IL						
IN	3.7	3.8	3,934	4,061	1,061	1,059
IA						
KS	572.3	570.9	734,073	734,763	1,283	1,287
KY	1.3	1.4	1,200	1,321	960	967
LA	0.5	0.6	420	456	769	712
MI	51.8	52.4	69,105	71,426	1,342	1,372
MN	75.0	67.5	102,975	93,467	1,380	1,390
MS	0.1	0.2	88	107	835	603
MO	7.3	7.0	8,775	8,379	1,204	1,197
MT	1.4	1.5	1,645	1,753	1,160	1,203
NE	646.2	607.9	840,612	803,521	1,302	1,323
NV	0.2	0.2	188	149	1,124	965
N ENG <sup>2</sup>	1.2	1.2	1,301	1,310	1,095	1,058
NJ	2.5	3.0	2,775	3,337	1,109	1,139
NM	0.4	0.4	460	486	1,082	1,111
NY	2.4	2.6	2,780	3,162	1,191	1,217
NC	21.2	18.7	24,271	21,603	1,151	1,163
ND	1.0	1.2	1,193	1,423	1,230	1,212
OH	10.6	9.9	12,504	11,783	1,184	1,202
OK	2.2	2.3	2,367	2,305	1,084	1,023
OR	3.3	3.5	3,935	4,059	1,216	1,203
PA	86.6	76.6	106,434	93,605	1,240	1,240
SC	13.8	13.2	14,926	14,326	1,089	1,097
SD						
TN	2.6	3.4	2,153	2,897	849	886
TX	620.5	574.9	757,604	708,333	1,224	1,235
UT	59.4		76,203		1,287	
VA	0.8	0.7	829	669	1,033	1,009
WA	90.2	92.0	114,792	118,751	1,280	1,297
WV	0.4	0.4	485	477	1,281	1,204
WI	144.8	143.2	192,061	190,012	1,341	1,340
WY	0.7	0.7	796	782	1,210	1,151
US <sup>3</sup>	3,062.5	2,920.6	3,886,174	3,731,439	1,273	1,282

<sup>1</sup> Includes slaughter under Federal inspection and other Commercial slaughter, excludes farm slaughter.

<sup>2</sup> N ENG includes CT, ME, MA, NH, RI, and VT.

<sup>3</sup> States with no data printed are still included in the US total, data not printed to avoid disclosing individual operations. Accumulated totals and percentages based on unrounded data.



**Commercial Calf Slaughter: By State and United States,  
July 2008 and 2009 <sup>1</sup>**

State	Number Slaughtered		Total Live Weight		Average Live Weight	
	2008	2009	2008	2009	2008	2009
	<i>1,000 Head</i>	<i>1,000 Head</i>	<i>1,000 Pounds</i>	<i>1,000 Pounds</i>	<i>Pounds</i>	<i>Pounds</i>
AL						
AK						
AZ						
AR						
CA	19.3	23.0	2,276	2,236	119	99
CO						
DE-MD	0.2	0.2	62	63	271	268
FL	0.1		45		404	
GA	0.1	0.1	50	21	445	428
HI						
ID						
IL	6.0	2.4	1,438	953	244	400
IN						
IA						
KS						
KY						
LA	0.4	0.4	228	183	524	507
MI	1.5	1.5	619	632	423	423
MN						
MS		0.1		20		361
MO	0.1		23		395	
MT						
NE						
NV						
N ENG <sup>2</sup>	0.2	4.3	51	388	256	91
NJ	5.0	5.2	2,064	2,168	413	418
NM	1.9		168		89	
NY	23.2	6.8	2,303	629	103	95
NC	0.2	0.1	73	54	488	466
ND						
OH	4.8	12.8	2,147	2,467	448	194
OK		0.1		29		439
OR						
PA	12.4	10.8	4,556	4,607	367	429
SC						
SD						
TN	0.1		44		436	
TX	0.7	3.9	403	545	552	140
UT						
VA						
WA						
WV						
WI						
WY						
US <sup>3</sup>	87.9	79.9	21,032	18,216	243	230

<sup>1</sup> Includes slaughter under Federal inspection and other Commercial slaughter, excludes farm slaughter.

<sup>2</sup> N ENG includes CT, ME, MA, NH, RI, and VT.

<sup>3</sup> States with no data printed are still included in the US total, data not printed to avoid disclosing individual operations. Accumulated totals and percentages based on unrounded data.

**Commercial Hog Slaughter: By State and United States,  
July 2008 and 2009 <sup>1</sup>**

State	Number Slaughtered		Total Live Weight		Average Live Weight	
	2008	2009	2008	2009	2008	2009
	<i>1,000 Head</i>	<i>1,000 Head</i>	<i>1,000 Pounds</i>	<i>1,000 Pounds</i>	<i>Pounds</i>	<i>Pounds</i>
AL	8.3	6.6	3,685	2,883	444	435
AK		0.1		12		224
AZ	0.2	0.1	28	17	181	238
AR	17.3	15.1	8,000	7,041	463	467
CA	224.8	223.1	52,446	54,539	233	245
CO	0.9	0.8	215	207	249	246
DE-MD	1.4	1.4	323	298	225	218
FL	9.2	7.6	987	936	107	124
GA	9.8	6.1	2,255	1,519	229	248
HI	1.7	1.5	384	316	225	215
ID	12.8	9.8	3,117	2,502	245	255
IL	842.1	748.2	228,500	207,032	272	277
IN	698.2	725.0	178,511	187,928	256	259
IA	2,691.4	2,615.3	702,454	701,138	261	268
KS						
KY						
LA	1.0	0.8	168	162	173	200
MI	11.5	10.8	4,141	3,853	361	356
MN	818.7	830.0	210,927	217,030	258	262
MS	6.0	9.2	1,742	2,646	288	288
MO	650.9	634.1	172,847	173,739	266	274
MT	1.5	1.3	349	309	228	236
NE	649.6	627.8	169,641	167,077	262	266
NV						
N ENG <sup>2</sup>	2.1	2.1	413	409	193	199
NJ	9.3	8.0	884	788	95	99
NM	0.1		16		243	
NY	3.1	2.8	552	497	178	178
NC	979.5	1,008.7	243,738	254,114	249	252
ND	9.2	9.1	2,460	2,337	269	258
OH	98.0	95.3	26,430	25,390	270	267
OK	428.3	445.6	116,071	121,803	271	273
OR	14.9	13.0	3,627	3,273	245	254
PA	254.3	243.2	63,641	61,899	251	255
SC						
SD	358.0	259.5	90,227	66,692	252	257
TN	46.6	50.9	22,322	24,190	481	477
TX	36.2	34.8	8,294	9,018	229	259
UT	6.3	4.8	1,176	1,019	188	211
VA	184.3	153.2	47,688	40,051	259	262
WA	2.7	2.1	505	439	184	206
WV	0.7	0.6	171	150	233	237
WI	59.4	46.1	26,351	20,259	451	445
WY	0.4	0.4	114	105	262	237
US <sup>3</sup>	9,462.8	9,146.7	2,479,550	2,444,531	262	267

<sup>1</sup> Includes slaughter under Federal inspection and other Commercial slaughter, excludes farm slaughter.

<sup>2</sup> N ENG includes CT, ME, MA, NH, RI, and VT.

<sup>3</sup> States with no data printed are still included in the US total, data not printed to avoid disclosing individual operations. Accumulated totals and percentages based on unrounded data.

**Commercial Sheep and Lamb Slaughter: By State and United States,  
July 2008 and 2009<sup>1</sup>**

State	Number Slaughtered		Total Live Weight		Average Live Weight	
	2008	2009	2008	2009	2008	2009
	<i>1,000 Head</i>	<i>1,000 Head</i>	<i>1,000 Pounds</i>	<i>1,000 Pounds</i>	<i>Pounds</i>	<i>Pounds</i>
AL		0.1		4		73
AK						
AZ		0.2		17		103
AR		0.1		5		98
CA						
CO	68.3	67.5	10,470	10,919	153	162
DE-MD	3.7	3.7	347	354	95	96
FL	0.3	0.3	19	14	55	49
GA	0.3	0.2	27	18	80	73
HI		0.1		9		137
ID	0.7	0.7	81	91	117	140
IL						
IN	2.6	3.6	283	384	107	108
IA	29.8	36.7	4,174	5,425	140	148
KS	0.3	0.3	35	31	100	108
KY	1.2	1.1	143	117	117	110
LA	0.4	0.3	23	18	65	56
MI	17.2	16.3	2,089	2,122	122	131
MN	1.4	1.3	171	167	122	127
MS		0.1		7		59
MO	0.7	0.6	74	75	108	117
MT	0.3	0.3	37	40	117	123
NE	0.2	0.1	19	14	121	137
NV	0.2		18		117	
N ENG <sup>2</sup>	2.1	3.3	210	292	99	90
NJ	12.0	10.6	1,014	846	84	80
NM	1.2	1.0	133	135	134	138
NY	2.6	2.5	236	231	90	93
NC	0.8	0.9	61	63	77	69
ND	0.1	0.1	8	13	102	120
OH	1.4	1.4	144	160	103	111
OK	0.1	0.1	10	11	92	85
OR	2.1	2.0	272	280	132	139
PA	4.5	3.7	442	370	99	99
SC		0.1		10		72
SD	0.3	0.3	39	41	121	126
TN	1.3	1.2	96	79	76	69
TX	3.1	10.2	249	904	81	89
UT	2.8	3.1	380	417	136	133
VA	1.1	0.9	110	89	97	96
WA	0.5	0.7	90	112	166	159
WV	0.4		55		136	
WI	1.4	1.3	196	179	138	137
WY	0.2	0.1	27	18	149	144
US <sup>3</sup>	207.1	207.4	27,305	27,937	132	135

<sup>1</sup> Includes slaughter under Federal inspection and other Commercial slaughter, excludes farm slaughter.

<sup>2</sup> N ENG includes CT, ME, MA, NH, RI, and VT.

<sup>3</sup> States with no data printed are still included in the US total, data not printed to avoid disclosing individual operations. Accumulated totals and percentages based on unrounded data.

**Classification of Livestock Slaughtered Under Federal Inspection:  
United States**

Item	Jul 2008	Jun 2009	Jul 2009	Jan - Jul <sup>1</sup>		Jul 2008	Jun 2009	Jul 2009	Jan - Jul <sup>1</sup>	
				2008	2009				2008	2009
	<i>1,000 Head</i>	<i>1,000 Head</i>	<i>1,000 Head</i>	<i>1,000 Head</i>	<i>1,000 Head</i>	<i>Percent of Total</i>	<i>Percent of Total</i>	<i>Percent of Total</i>	<i>Percent of Total</i>	<i>Percent of Total</i>
Class <sup>2</sup>										
Cattle										
Steers	1,580	1,525	1,499	10,273	9,663	52.4	51.9	52.1	51.2	50.4
Heifers	861	850	814	5,947	5,677	28.5	28.9	28.3	29.6	29.6
All Cows	520	511	513	3,499	3,510	17.2	17.4	17.8	17.4	18.3
Dairy Cows	209	256	228	1,468	1,673	6.9	8.7	7.9	7.3	8.7
Other Cows	311	255	285	2,031	1,837	10.3	8.7	9.9	10.1	9.6
Bulls	57	50	52	347	323	1.9	1.7	1.8	1.7	1.7
Total <sup>1</sup>	3,017	2,936	2,878	20,066	19,172	100.0	100.0	100.0	100.0	100.0
Calves & Vealers	87	76	79	511	522	100.0	100.0	100.0	100.0	100.0
Hogs										
Barrow & Gilts	9,025	8,779	8,742	64,049	62,066	96.3	96.5	96.5	96.4	96.7
Sows	305	285	282	2,088	1,840	3.3	3.1	3.1	3.1	2.9
Boars	43	37	38	278	249	0.5	0.4	0.4	0.4	0.4
Total <sup>1</sup>	9,373	9,101	9,062	66,416	64,155	100.0	100.0	100.0	100.0	100.0
Sheep										
Mature Sheep	11	12	14	71	72	5.5	6.5	7.2	5.0	5.5
Lambs & Yrlngs	183	173	175	1,328	1,239	94.5	93.5	92.8	95.0	94.5
Total <sup>1</sup>	193	185	189	1,399	1,311	100.0	100.0	100.0	100.0	100.0
Average Dressed Weight										
	<i>Pounds</i>	<i>Pounds</i>	<i>Pounds</i>	<i>Pounds</i>	<i>Pounds</i>					
Cattle										
Steers <sup>3</sup>	779	772	782	772	780					
Heifers <sup>3</sup>	840	832	845	826	840					
All Cows <sup>3</sup>	764	756	769	760	774					
Bulls <sup>3</sup>	600	607	604	616	614					
Bulls <sup>3</sup>	897	891	882	894	883					
Calves & Vealers	141	149	135	157	150					
Hogs										
Barrow Gilts <sup>4</sup>	196	202	200	201	203					
Sows <sup>4</sup>	192	198	197	198	200					
Boars <sup>4</sup>	308	306	310	308	304					
Boars <sup>4</sup>	205	200	195	209	198					
Sheep										
Mature Sheep <sup>5</sup>	67	70	69	71	71					
Mature Sheep <sup>5</sup>	66	66	63	67	66					
Lamb & Yrlngs <sup>5</sup>	67	70	70	71	72					

<sup>1</sup> Total and percentages based on unrounded data.

<sup>2</sup> Species totals and classification reported by food inspectors, Inspection Operations, FSIS.

<sup>3</sup> Included in cattle average dressed weight.

<sup>4</sup> Included in hog average dressed weight.

<sup>5</sup> Included in sheep average dressed weight.

**Federally Inspected Slaughter: By Region and United States,  
July 2009<sup>1</sup>**

Standard Federal Regions	Cattle							Calves
	Total <sup>2</sup>	Steers	Heifers	Cows			Bulls	Total
				All	Dairy	Other		
	<i>1,000 Head</i>	<i>1,000 Head</i>	<i>1,000 Head</i>	<i>1,000 Head</i>	<i>1,000 Head</i>	<i>1,000 Head</i>	<i>1,000 Head</i>	<i>1,000 Head</i>
1	1.1	0.5	0.2					4.3
2	5.5	1.7	0.3	3.0	2.6	0.4	0.5	12.0
3	79.8	31.3	7.3	39.6	31.5	8.1	1.5	11.1
4	70.7	1.7	0.6	57.7	12.3	45.4	10.7	0.2
5	346.2	161.7	44.0	130.6	70.6	60.1	9.9	23.4
6	573.7	303.2	164.7	94.8	20.6	74.2	10.9	3.9
7	1,226.6	702.5	457.2	59.6	1.6	58.0	7.3	
8	265.8	154.5	92.8					
9	186.6	89.7	13.0	79.7	64.8	14.9	4.2	22.8
10	122.2	52.4	33.9	31.8	16.7	15.1	4.1	
US <sup>2</sup>	2,878.1	1,499.3	813.9	512.9	227.8	285.1	52.0	78.9
	Hogs				Sheep			
	Total <sup>2</sup>	Barrows & Gilts	Sows	Boars	Total <sup>2</sup>	Mature Sheep	Lambs & Yearlings	
	<i>1,000 Head</i>	<i>1,000 Head</i>	<i>1,000 Head</i>	<i>1,000 Head</i>	<i>1,000 Head</i>	<i>1,000 Head</i>	<i>1,000 Head</i>	<i>1,000 Head</i>
1	1.7	1.6			3.1	0.5	2.6	
2	10.5	10.3	0.1	0.1	12.4	1.5	10.9	
3	397.0	382.1	1.3	13.6	9.3	0.4	8.9	
4	1,341.2	1,268.6	71.3	1.3	3.7	1.2	2.5	
5	2,417.3	2,302.0	111.6	3.7	21.6	3.2	18.4	
6	488.7	466.1	22.4	0.2				
7	3,890.4	3,796.8	74.3	19.2	37.2	0.7	36.5	
8	271.8	271.2	0.6		70.1	2.8	67.3	
9	218.9	218.9	0.1					
10	24.2	24.2			2.7	0.2	2.5	
US <sup>2</sup>	9,061.7	8,741.7	281.8	38.2	189.0	13.7	175.3	

<sup>1</sup> States included in regions are as follows: 1- CT, ME, NH, VT, MA, & RI; 2- NY & NJ; 3- DE-MD, PA, WV, & VA; 4- AL, FL, GA, KY, MS, NC, SC, & TN; 5- IL, IN, MI, MN, OH, & WI; 6- AR, LA, NM, OK, & TX; 7- IA, KS, MO, & NE; 8- CO, MT, ND, SD, UT, & WY; 9- AZ, CA, HI & NV; 10- AK, ID, OR, & WA.

<sup>2</sup> Regions with no data printed are still included in the US and Region total, data not printed to avoid disclosing individual operations. Totals may not add due to rounding.

**Federally Inspected Slaughter: By Region and United States,  
January - July 2009<sup>1</sup>**

Standard Federal Regions	Cattle							Calves
	Total <sup>2</sup>	Steers	Heifers	Cows			Bulls	Total
				All	Dairy	Other		
	<i>1,000 Head</i>	<i>1,000 Head</i>	<i>1,000 Head</i>	<i>1,000 Head</i>	<i>1,000 Head</i>	<i>1,000 Head</i>	<i>1,000 Head</i>	<i>1,000 Head</i>
1	7.1	3.0	1.3					19.2
2	35.9	11.8	2.1	19.1	16.4	2.7	2.9	120.6
3	559.5	224.1	53.0	272.6	216.9	55.7	9.7	77.3
4	466.5	11.7	4.2	384.2	90.7	293.5	66.3	2.2
5	2,322.7	1,035.7	307.2	923.2	501.4	421.8	56.5	134.4
6	3,930.6	2,066.1	1,188.6	601.3	151.1	450.2	74.6	20.8
7	7,967.2	4,450.5	3,067.4	399.0	11.3	387.7	50.2	
8	1,800.1	948.3	726.8					
9	1,271.6	601.2	80.0	568.8	498.9	69.9	21.7	139.3
10	811.1	310.5	245.8	229.2	139.3	89.9	25.6	
US <sup>2</sup>	19,172.3	9,662.9	5,676.6	3,510.3	1,673.0	1,837.3	322.5	521.6
	Hogs				Sheep			
	Total <sup>2</sup>	Barrows & Gilts	Sows	Boars	Total <sup>2</sup>	Mature Sheep	Lambs & Yearlings	
	<i>1,000 Head</i>	<i>1,000 Head</i>	<i>1,000 Head</i>	<i>1,000 Head</i>	<i>1,000 Head</i>	<i>1,000 Head</i>	<i>1,000 Head</i>	
1	8.2	8.0	0.2	0.1	20.1	2.5	17.6	
2	68.4	67.1	0.7	0.6	93.9	9.8	84.2	
3	2,898.5	2,817.9	8.7	71.9	64.9	2.9	62.0	
4	9,357.3	8,858.4	487.7	11.1	23.6	7.0	16.6	
5	16,673.2	15,885.0	763.2	25.0	161.0	19.8	141.3	
6	3,362.2	3,213.2	147.5	1.4				
7	27,452.3	26,885.2	428.1	139.0	208.8	2.7	206.0	
8	2,679.2	2,676.5	2.6	0.1	546.9	13.6	533.2	
9	1,485.7	1,485.0	0.5	0.2				
10	169.9	169.4	0.4	0.1	14.1	1.3	12.8	
US <sup>2</sup>	64,154.7	62,065.5	1,839.8	249.4	1,311.2	72.4	1,238.7	

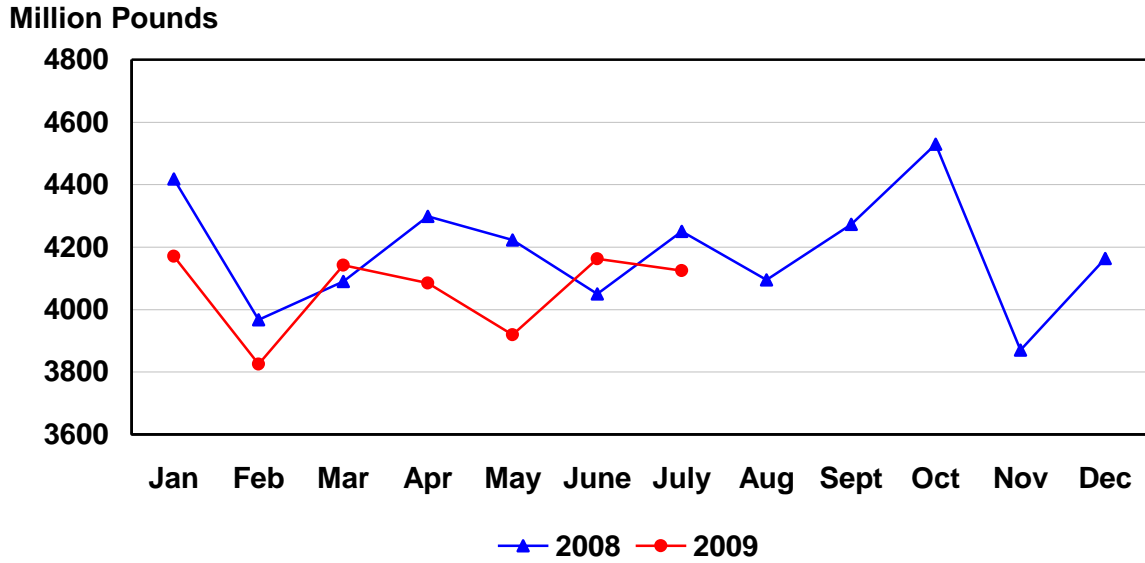
<sup>1</sup> States included in regions are as follows: 1- CT, ME, NH, VT, MA, & RI; 2- NY & NJ; 3- DE-MD, PA, WV, & VA; 4- AL, FL, GA, KY, MS, NC, SC, & TN; 5- IL, IN, MI, MN, OH, & WI; 6- AR, LA, NM, OK, & TX; 7- IA, KS, MO, & NE; 8- CO, MT, ND, SD, UT, & WY; 9- AZ, CA, HI & NV; 10- AK, ID, OR, & WA.

<sup>2</sup> Regions with no data printed are still included in the US and Region total, data not printed to avoid disclosing individual operations. Totals may not add due to rounding.

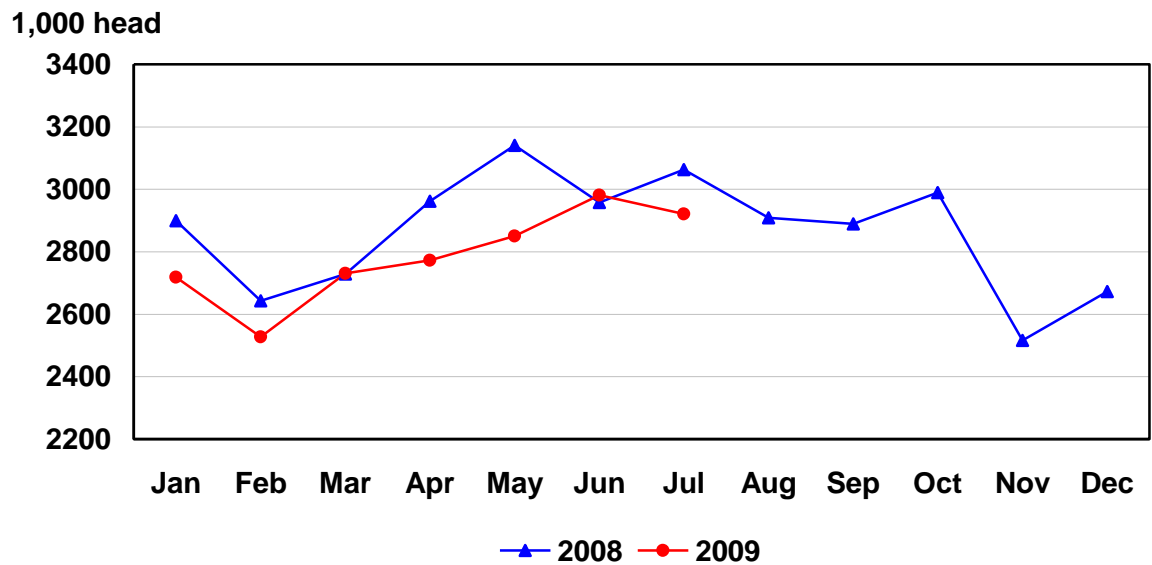
**Federally Inspected Slaughter: Percent of Total Commercial Slaughter by Species, United States**

Species	Jul 2008	Jun 2009	Jul 2009	Jan - Jul	
				2008	2009
	<i>Percent</i>	<i>Percent</i>	<i>Percent</i>	<i>Percent</i>	<i>Percent</i>
Cattle	98.5	98.5	98.5	98.4	98.3
Calves	98.7	98.5	98.7	98.5	98.6
Hogs	99.1	99.1	99.1	99.1	99.2
Sheep	93.2	91.2	91.1	94.3	92.6

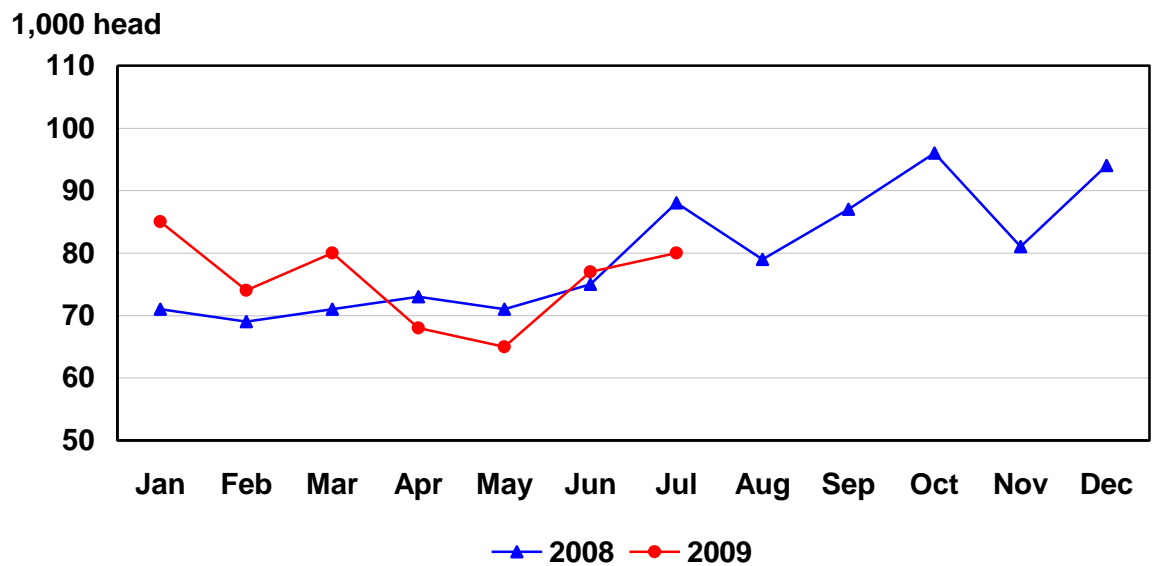
## U.S. Monthly Commercial Red Meat Production



# U.S. Monthly Commercial Slaughter Cattle

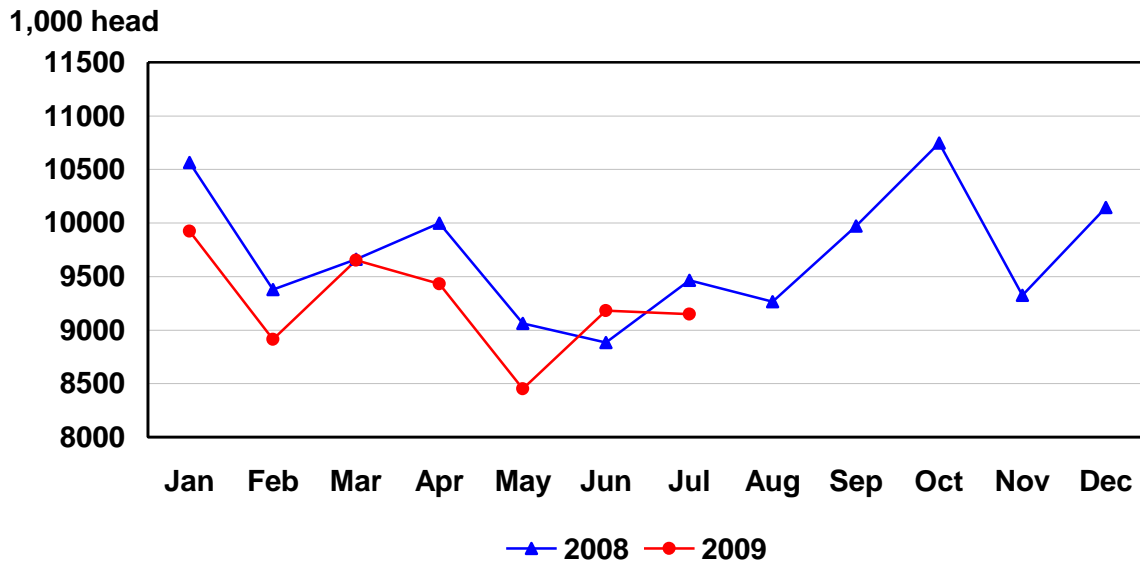


# U.S. Monthly Commercial Slaughter Calves

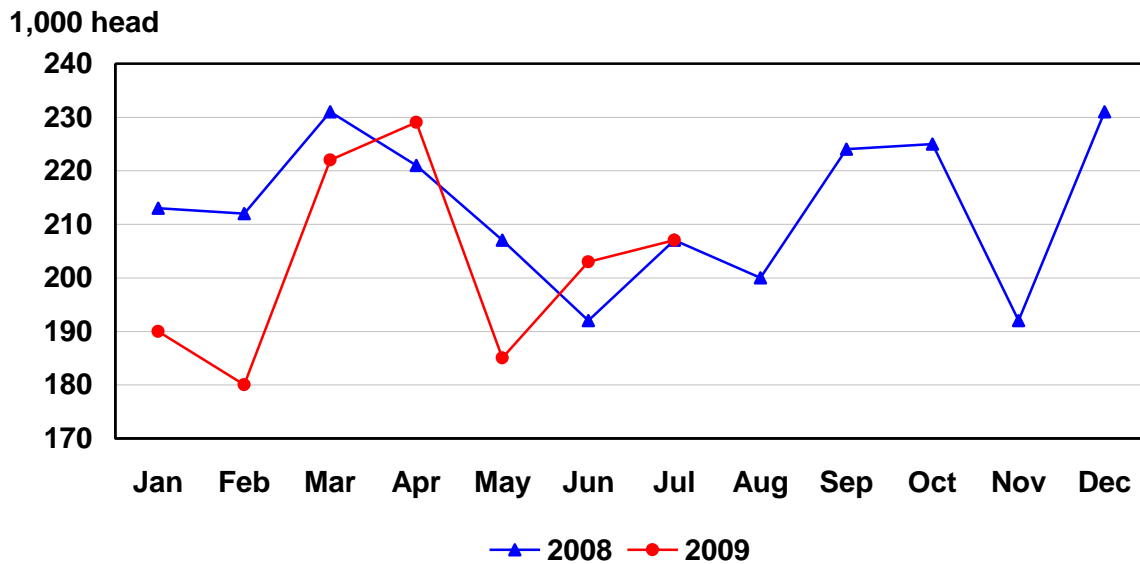




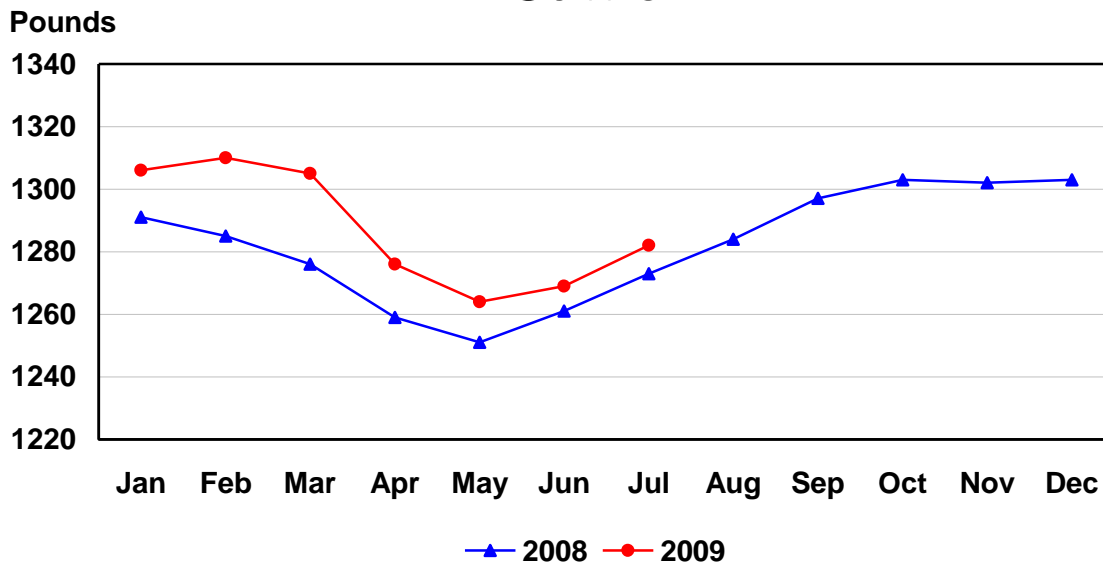
# U.S. Monthly Commercial Slaughter Hogs



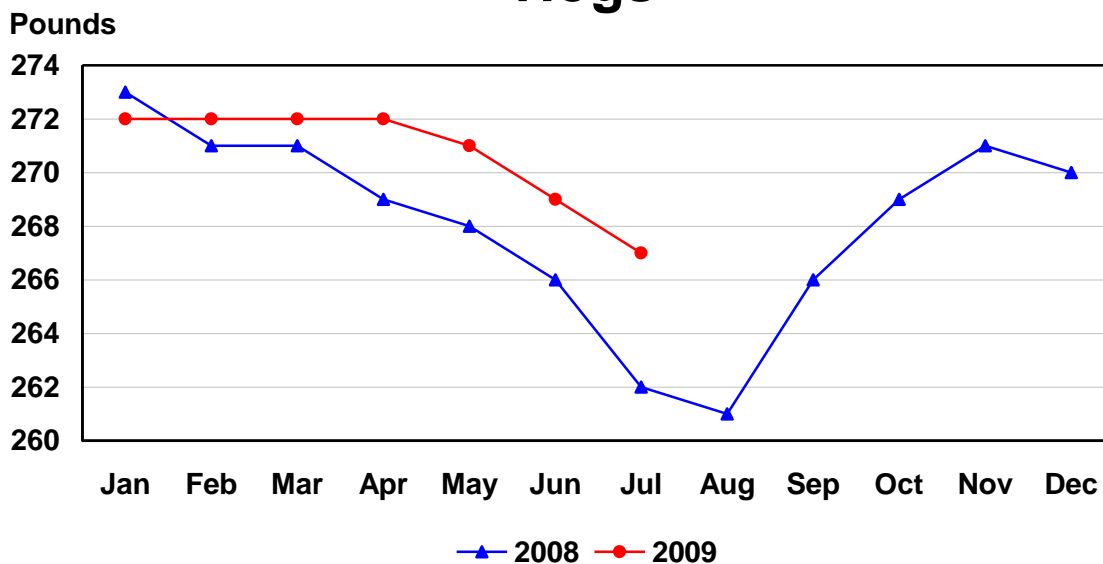
# U.S. Monthly Commercial Slaughter Sheep



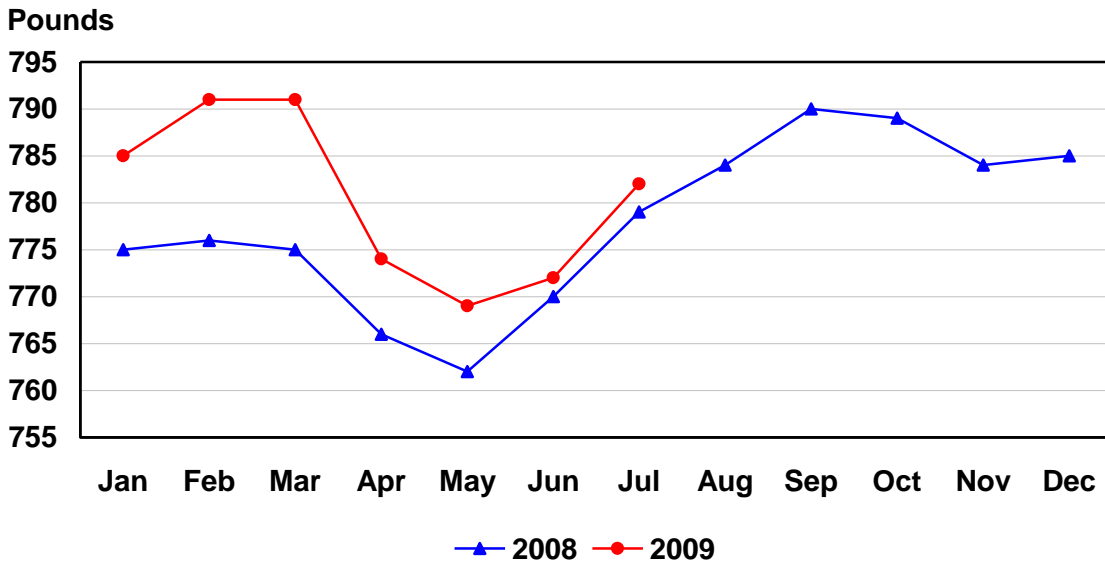
# U.S. Monthly Commercial Slaughter Average Live Weight Cattle



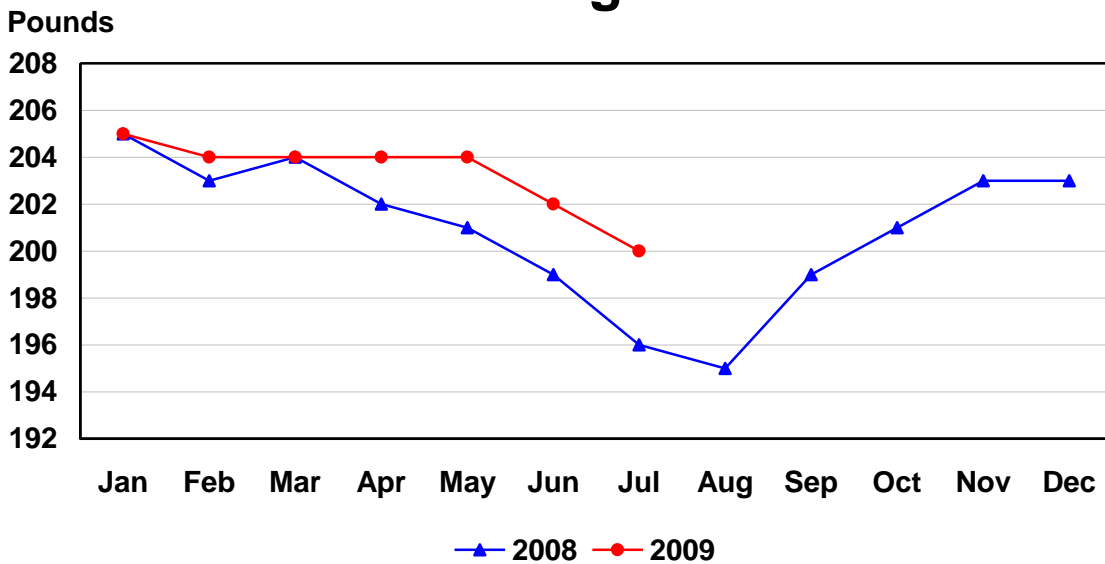
# U.S. Monthly Commercial Slaughter Average Live Weight Hogs



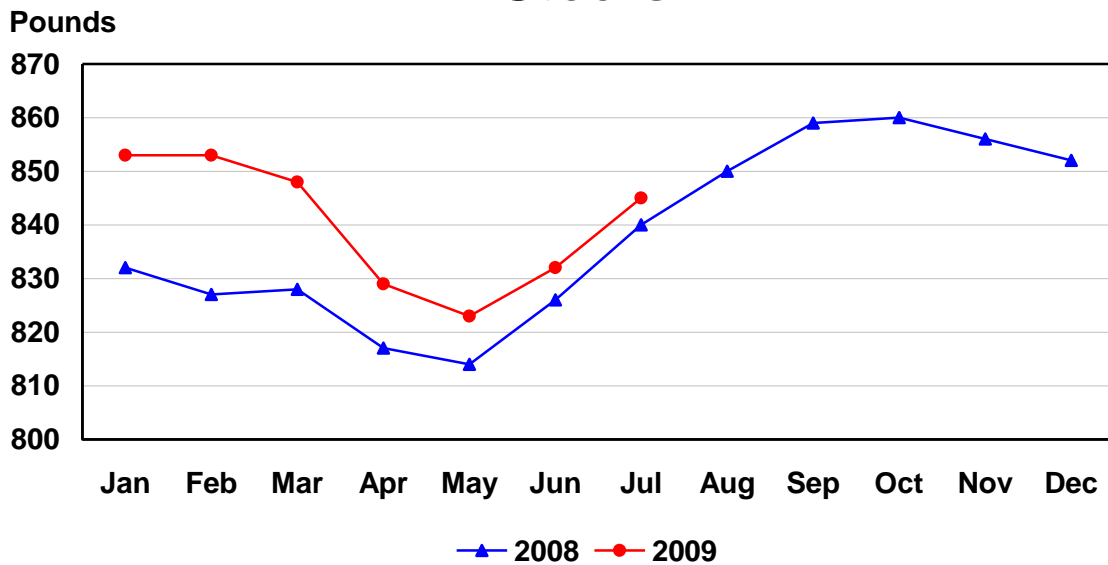
# U.S. Monthly Federally Inspected Average Dressed Weight Cattle



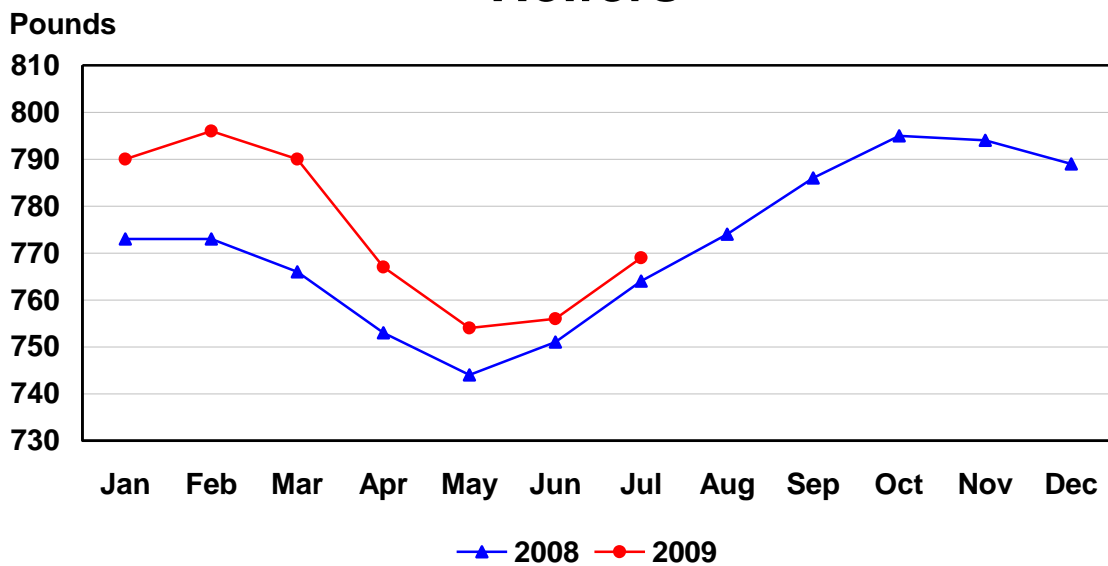
# U.S. Monthly Federally Inspected Average Dressed Weight Hogs



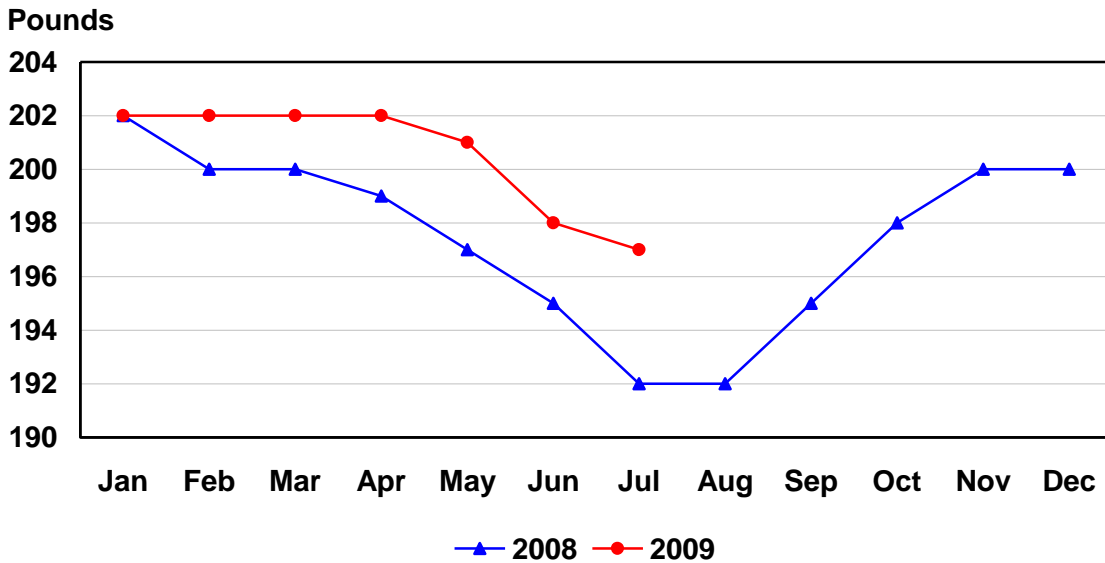
# U.S. Monthly Federally Inspected Average Dressed Weight Steers



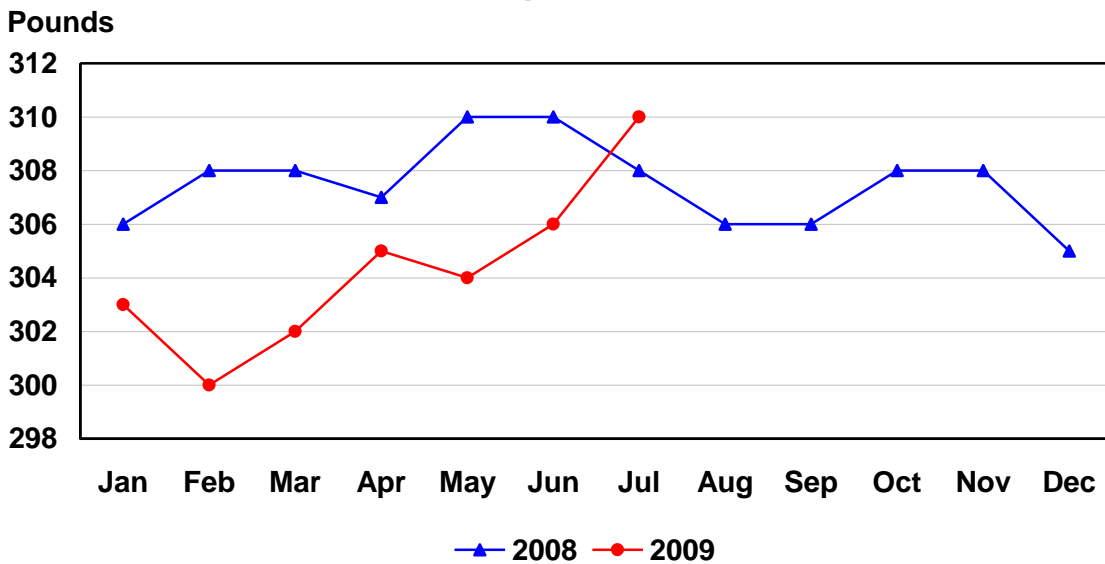
# U.S. Monthly Federally Inspected Average Dressed Weight Heifers



## U.S. Monthly Federally Inspected Average Dressed Weight Barrows and Gilts



## U.S. Monthly Federally Inspected Average Dressed Weight Sows



## Reliability of Livestock Slaughter Estimates

**Data Sources:** Primary data for the commercial livestock slaughter estimates are obtained from electronic reports completed by inspectors from the Food Safety and Inspection Service (FSIS), USDA, which provide daily counts of animals slaughtered in Federally Inspected (FI) plants, in addition to total live and dressed weights. These counts are combined with data from State-administered Non-Federally Inspected (NFI) slaughter plants to derive total commercial slaughter estimates. More than 95 percent of the total U.S. slaughter for any species is under Federal Inspection.

There are nearly 800 livestock slaughter plants in the U.S. operating under Federal Inspection and over 2,000 Non-Federally Inspected (State-inspected or custom-exempt) slaughter plants. Slaughter from State-inspected Talmedge-Aiken plants is included in FI totals (see Types of Plants, page 18). To prevent duplication in reporting between FI and NFI plants and assure all FI plants are included, certificates prepared by FSIS identifying operating status are constantly monitored

**Revision Policy:** Number of head slaughtered, live weights, and dressed weights are subject to revision the following month after the monthly release. Annual totals are published in the slaughter summary each March which includes any revisions made to current and previous year's published data. Revisions are generally the result of late reports received from slaughter plants and are usually less than one-half of one percent. No revisions will be made to the previous year's data after the publication of the annual summary in March.

**Procedures and Reliability:** The livestock slaughter data is obtained electronically on a daily basis and summarized approximately two weeks after the week of slaughter. An edit compares each plant's data with the historical data for that plant. Data are checked for unusual values for head kill, patterns of kill, average weights, and dressing percent, based on each plant's past operating profile. In addition, the edit provides a listing of missing reports for follow-up contact with FSIS. Average live and dressed weights and dressing percentages by State are compared with the previous weeks as an additional check. Fluctuations are frequently the result of plants permanently or temporarily closing and a shift in the species reported.

The FSIS District Veterinary Medical Specialists (DVMS) are contacted by e-mail or telephone for missing or potentially erroneous slaughter data. This assures that plants slaughtering a large number of head or several species are accounted for each week. Any corrections FSIS makes to the slaughter data are included in the summary.

Imputation may be necessary for incomplete reports. The imputation of live and dressed weights is based on the current week reported data of plants of similar size and location. Imputation for live and dressed weight data for cattle and hogs is less than 10 percent and 7 percent, respectively. The imputation for calves and sheep is more frequent and variable. If no data is received electronically or by other means, for plants slaughtering fewer than 50 total head weekly of only one species, data are imputed. The imputation of head for any plant is based on the historical data for that particular plant. The imputation of head slaughtered is rare but when necessary, the imputed head kill for missing plants usually is less than 1 percent of the U.S. head kill totals.

FI data are summarized weekly and accumulated to a monthly total for this release. These weekly totals are published by USDA's Agricultural Marketing Service (AMS) in **Livestock, Meat, Wool Market News, Weekly Summary**, and Statistics and are also available on the NASS website. NFI data are summarized monthly only.

Livestock slaughter estimates are based on a census of operating plants and therefore, have no sampling error. However, they may be subject to errors such as omissions, duplications and mistakes in reporting, recording and processing the data. These errors are minimized through rigid quality controls in the edit and summarization process, and a careful review of all reported data for consistency and reasonableness.

No data are published when an individual plant's data could be divulged. If not published, these data are still included in US and region totals. A review of the data is made annually to determine the publishable data.

### **Types of Livestock Slaughter Plants**

There are generally **four types** of slaughtering plants.

- (1) **Federally Inspected (FI) Plants:** Plants that transport meat interstate must employ federal inspectors to assure compliance with USDA standards. Any State whose commercial plants operate entirely under federal inspection may still have custom-exempt establishments for which NFI estimates are made.
- (2) **Talmedge-Aiken (TA) Plants:** Slaughter plants in which USDA is responsible for inspection. However, federal inspection is carried out by State employees. These plants are considered to be federally inspected.
- (3) **Non-Federally Inspected (NFI) Plants:** Plants which sell and transport only intrastate. State inspectors assure compliance with individual State standards for these NFI plants. Mobile slaughtering units are excluded and are considered farm slaughter.
- (4) **Custom-Exempt Plants:** Plants that do not sell meat but operate on a custom basis only are custom-exempt. The animals and meat are not inspected, but the facilities must meet health standards. These are considered NFI plants and head kill is included in NFI totals.

## Terms and Definitions Used for Livestock Slaughter Estimates

**Average Live Wight:** Excludes post-mortem condemnations.

**Commercial Production:** Includes slaughter and meat production in federally inspected and other plants, but excludes animals slaughtered on farms.

**Dressed Weight:** The weight of a chilled animal carcass. Beef with kidney knob in; veal with hide off; lamb and mutton with pluck out; pork with leaf fat and kidneys out, jowls on and head off.

**Dressing Percent:** Usually expressed as a percentage yield of chilled carcass in relation to the weight of the live animal on hoof. For example, a live hog that weighed 200 pounds on hoof and yielded a carcass weighing 140 pounds would have a dressing percentage of 70.

**Food and Meat Inspection:** Includes examination, checking, or testing of a carcass and/or meat against established government standards and involves checking the facility for cleanliness, health of animals, or parts of animals and quality of the meat produced.

**Number of Head:** Includes post-mortem condemnations.

**Plant, Slaughter:** An establishment where animals are killed and butchered.

**Red Meat:** Red meat production is the carcass weight after slaughter excluding condemnation and is comprised of beef, veal, pork, and lamb and mutton. The FI red meat production is equal to the total carcass weight after slaughter. The NFI meat production formula is (NFI head kill) X (live weight) X (FI dressing percentage) = NFI red meat production.

**Slaughter:** Killing and butchering of animals primarily for food.

**Slaughter, Farm:** Animals slaughtered on farms primarily for home consumption. Excludes custom slaughter for farmers at commercial establishments, but includes mobile slaughtering on farms. These estimates appear only in the annual slaughter release.

**Total Live Weight:** Excludes post-mortem condemnations.

**Wholesome Meat Act:** Legislation that specifies that all meat produced for sale in the U.S. must be inspected. Meat that is transported interstate must be inspected in compliance with Federal (USDA) Standards.

### Information Contacts

Listed below are the commodity specialists in the Livestock Branch of the National Agricultural Statistics Service to contact for additional information.

Dan Kerestes, Chief, Livestock Branch.....	(202) 720-3570
Scott Hollis, Head, Livestock Section.....	(202) 690-2424
Jim Collom – Dairy Products .....	(202) 690-3236
Joe Gaynor – Dairy Products Prices.....	(202) 690-2168
Jason Hardegree – Cattle, Cattle on Feed.....	(202) 720-3040
Rex Patterson – Livestock Slaughter.....	(515) 284-4340
Mike Miller – Milk Production and Milk Cows.....	(202) 720-3278
Everett Olbert – Sheep and Goats .....	(202) 720-4751
Nicholas Streff – Hogs and Pigs.....	(202) 720-3106



## ACCESS TO REPORTS!!

---

For your convenience, there are several ways to obtain NASS reports, data products, and services:

### INTERNET ACCESS

All NASS reports are available free of charge on the worldwide Internet. For access, connect to the Internet and go to the NASS Home Page at: [www.nass.usda.gov](http://www.nass.usda.gov).

### E-MAIL SUBSCRIPTION

All NASS reports are available by subscription free of charge direct to your e-mail address. Starting with the NASS Home Page at [www.nass.usda.gov](http://www.nass.usda.gov), under the right navigation, *Receive reports by Email*, click on **National** or **State**. Follow the instructions on the screen.

-----

### PRINTED REPORTS OR DATA PRODUCTS

**CALL OUR TOLL-FREE ORDER DESK: 800-999-6779 (U.S. and Canada)**  
**Other areas, please call 703-605-6220      FAX: 703-605-6900**  
**(Visa, MasterCard, check, or money order acceptable for payment.)**

-----

### ASSISTANCE

For **assistance** with general agricultural statistics or further information about NASS or its products or services, contact the **Agricultural Statistics Hotline** at **800-727-9540**, 7:30 a.m. to 4:00 p.m. ET, or e-mail: [nass@nass.usda.gov](mailto:nass@nass.usda.gov).

The U.S. Department of Agriculture (USDA) prohibits discrimination in all its programs and activities on the basis of race, color, national origin, age, disability, and where applicable, sex, marital status, familial status, parental status, religion, sexual orientation, genetic information, political beliefs, reprisal, or because all or part of an individual's income is derived from any public assistance program. (Not all prohibited bases apply to all programs.) Persons with disabilities who require alternative means for communication of program information (Braille, large print, audiotape, etc.) should contact USDA's TARGET Center at (202) 720-2600 (voice and TDD).

To file a complaint of discrimination, write to USDA, Director, Office of Civil Rights, 1400 Independence Avenue, S.W., Washington, D.C. 20250-9410, or call (800) 795-3272 (voice) or (202) 720-6382 (TDD). USDA is an equal opportunity provider and employer.

**USDA Data Users' Meeting  
Monday, November 2, 2009**

**Crowne Plaza Hotel Chicago-Metro  
Chicago, Illinois 60661  
(312) 829-5000**

The USDA's National Agricultural Statistics Service will be organizing an open forum for data users. The purpose will be to provide updates on pending changes in the various statistical and information programs and seeks comments and input from data users. Other USDA agencies to be represented will include the Agricultural Marketing Service, the Economic Research Service, the Foreign Agricultural Service, and World Agricultural Outlook Board. The Foreign Trade Division from the Census Bureau will also be included in the meeting.

For registration details or additional information for the Data Users' Meeting, see the NASS homepage at [www.nass.usda.gov/forum/](http://www.nass.usda.gov/forum/) or contact Marjorie Taylor (NASS) at (202) 690-8141 or at [marjorie\\_taylor@nass.usda.gov](mailto:marjorie_taylor@nass.usda.gov).

This Data Users' Meeting precedes an Industry Outlook Conference that will be held at the same location on Tuesday, November 3, 2009. The Outlook Conference brings together analysts from various commodity sectors to discuss the outlook situation. For registration details or additional information for the Industry Outlook Meeting see the Livestock and Marketing Information Center (LMIC) homepage at [www.lmic.info](http://www.lmic.info) or contact Jim Robb at (720) 544-2941 or at [robb@lmic.info](mailto:robb@lmic.info).