



United States
Department of
Agriculture

National
Agricultural
Statistics
Service



Livestock Slaughter 2006 Summary

March 2007

Mt An 1-2-1 (07)

USDA



Contents

	Page
Summary	1
Red Meat Production: Federally Inspected, Commercial, and Farm, by Type, U.S.	2
Number of Head Slaughtered: Commercial and Farm, by Species, U.S.	3
Federally Inspected Slaughter as Percent of Total Commercial, by Species, U.S.	3
Federally Inspected Average Dressed Weight, by Species and Class, U.S.	5
Commercial Red Meat Production, by State and U.S.	6
Number Slaughtered and Average Live Weights, by Species and Type of Slaughter, U.S.	8
Federally Inspected Number Slaughtered and Percent by Classification, by Species and Class, U.S.	12
Federally Inspected Slaughter by Species and Class, by Region	14
Commercial Cattle Slaughter: Number, Total and Average Live Weight, by State and U.S.	28
Commercial Calf Slaughter: Number, Total and Average Live Weight, by State and U.S.	34
Commercial Hog Slaughter: Number, Total and Average Live Weight, by State and U.S.	40
Commercial Sheep and Lamb Slaughter: Number, Total and Average Live Weight, by State and U.S.	46
Federally Inspected Plants & Head Slaughtered, by Species, State, and U.S.	52
Federally Inspected Plants & Head Slaughtered, by Species and Size Group, U.S.	56
Number of Slaughter Plants, by Type, State and U.S.	58
Federally Inspected Number Slaughtered, by Week, U.S.	59
Reliability Statement	68
Types of Plants	69
Terms and Definitions	70
Information Contacts	70

Total Red Meat Production at Record High in 2006

Total red meat production for the United States totaled 47.7 billion pounds in 2006, 4 percent higher than the previous year. Red meat includes beef, veal, pork, and lamb and mutton. Red meat production in **commercial plants** totaled 47.5 billion pounds. **On farm** production totaled 139 million pounds.

Beef production totaled 26.3 billion pounds, up 6 percent from the previous year. **Veal production** totaled 155 million pounds, down 6 percent from last year. **Pork production**, at 21.1 billion pounds, was 2 percent above the previous year. **Lamb and mutton production** totaled 190 million pounds, down 1 percent from 2005.

Commercial cattle slaughter during 2006 totaled 33.7 million head, up 4 percent from 2005, with federal inspection comprising 98.4 percent of the total. The average live weight was 1,275 pounds, up 19 pounds from a year ago. **Steers** comprised 52.7 percent of the total federally inspected cattle slaughter, **heifers** 29.6 percent, **dairy cows** 7.1 percent, **other cows** 9.0 percent, and **bulls** 1.5 percent.

Commercial calf slaughter totaled 711,300 head, 3 percent lower than a year ago with 98.2 percent under federal inspection. The average live weight was 345 pounds, down 8 pounds from a year earlier.

Commercial hog slaughter totaled 104.7 million head, 1 percent higher than 2005 with 99.0 percent of the hogs slaughtered under federal inspection. The average live weight was unchanged from last year, at 269 pounds. **Barrows and gilts** comprised 96.6 percent of the total federally inspected hog slaughter.

Commercial sheep and lamb slaughter, at 2.70 million head, was up slightly from the previous year with 94.4 percent comprised by federal inspection. The average live weight was down 1 pound from 2005 to 137 pounds. **Lambs and yearlings** comprised 95.4 percent of the total federally inspected sheep slaughter.

There were 793 plants slaughtering under federal inspection on January 1, 2007 compared with 806 last year. Of these, 636 plants slaughtered at least one head of cattle during 2006 with the 14 largest plants slaughtering 56 percent of the total cattle killed. Hogs were slaughtered at 614 plants, with the 10 largest plants accounting for 47 percent of the total. Likewise, 5 of the 238 plants that slaughtered calves accounted for 54 percent of the total and 4 of the 484 plants that slaughtered sheep or lambs in 2006 comprised 68 percent of the total head.

Iowa, Kansas, Nebraska, and Texas accounted for 52 percent of the United States commercial red meat production in 2006, similar to 2005.

Special Note

This issue also contains goat and bison slaughter data including head, average live weight, and number of plants. Additionally, Puerto Rico weight and production data was added. The Puerto Rico slaughter data is not included in the US totals.

Previous *Livestock Slaughter* publications included classifications labeled as "Bulls & Stags" and "Stags & Boars." These classes are now referred to as "Bulls" and "Boars." However, each classification continues to include stags.

**Red Meat Production: Federally Inspected, Commercial and Farm
by Month and Total, United States, 2006 and 2005 Total ¹**

Month	Beef		Veal		Pork ²		Lamb and Mutton		Total Red Meat ²	
	Fed Insp	Total	Fed Insp	Total	Fed Insp	Total	Fed Insp	Total	Fed Insp	Total
	<i>Million Pounds</i>	<i>Million Pounds</i>	<i>Million Pounds</i>	<i>Million Pounds</i>	<i>Million Pounds</i>	<i>Million Pounds</i>	<i>Million Pounds</i>	<i>Million Pounds</i>	<i>Million Pounds</i>	<i>Million Pounds</i>
Com'l ³										
Jan 2006	2,018.1	2,051.0	11.5	11.8	1,806.5	1,820.5	15.4	16.3	3,851.6	3,899.6
Feb	1,797.9	1,826.9	11.1	11.3	1,623.6	1,637.0	14.1	14.7	3,446.7	3,489.9
Mar	2,172.3	2,203.7	12.4	12.7	1,862.2	1,877.5	17.7	18.3	4,064.6	4,112.1
Apr	1,941.3	1,969.2	10.1	10.4	1,605.5	1,618.3	16.2	16.9	3,573.2	3,614.8
May	2,278.9	2,309.0	12.5	12.7	1,711.7	1,726.0	15.6	16.1	4,018.6	4,063.8
Jun	2,417.7	2,446.1	12.2	12.4	1,649.2	1,663.3	13.8	14.4	4,092.9	4,136.2
Jul	2,187.9	2,213.6	11.0	11.2	1,540.1	1,552.6	12.6	13.2	3,751.6	3,790.6
Aug	2,419.9	2,450.0	12.6	12.8	1,762.8	1,780.2	13.9	14.6	4,209.2	4,257.6
Sep	2,140.1	2,169.9	11.8	12.1	1,737.8	1,753.7	13.5	14.3	3,903.3	3,949.9
Oct	2,200.4	2,236.4	12.9	13.2	1,916.4	1,932.0	14.9	15.7	4,144.7	4,197.2
Nov	2,197.7	2,226.6	12.7	12.9	1,880.9	1,896.4	14.8	15.4	4,106.1	4,151.4
Dec	2,019.4	2,049.5	12.9	13.1	1,780.5	1,796.4	14.7	15.4	3,827.5	3,874.5
2006 Total Com'l	25,791.8	26,151.8	143.8	146.6	20,877.2	21,053.8	177.3	185.2	46,990.0	47,537.3
Farm		105.2		8.8		20.0		5.0		139.0
Total		26,257.0		155.4		21,073.8		190.2		47,676.3
2005 Total Com'l	24,328.3	24,682.5	151.7	155.8	20,506.4	20,685.1	179.5	187.1	45,165.9	45,710.5
Farm		103.8		9.0		20.3		4.4		137.5
Total		24,786.2		164.8		20,705.4		191.5		45,848.0

¹ Totals may not add due to rounding.

² Excludes lard and rendered pork fat.

³ Based on packers' dressed weight and excludes farm slaughter.

**Number of Head Slaughtered: By Species,
Commercial and Farm, United States, 2005-06**

Species	Total Commercial		Farm ¹		Total Slaughter	
	2006	2005	2006	2005	2006	2005
	<i>1000 Head</i>	<i>1000 Head</i>	<i>1000 Head</i>	<i>1000 Head</i>	<i>1000 Head</i>	<i>1000 Head</i>
Cattle	33,698.3	32,387.7	152.0	151.7	33,850.3	32,539.4
Calves	711.3	734.4	37.0	37.6	748.3	772.0
Hogs	104,736.6	103,581.5	108.0	108.6	104,844.6	103,690.1
Sheep	2,698.5	2,697.8	69.0	65.0	2,767.5	2,762.8

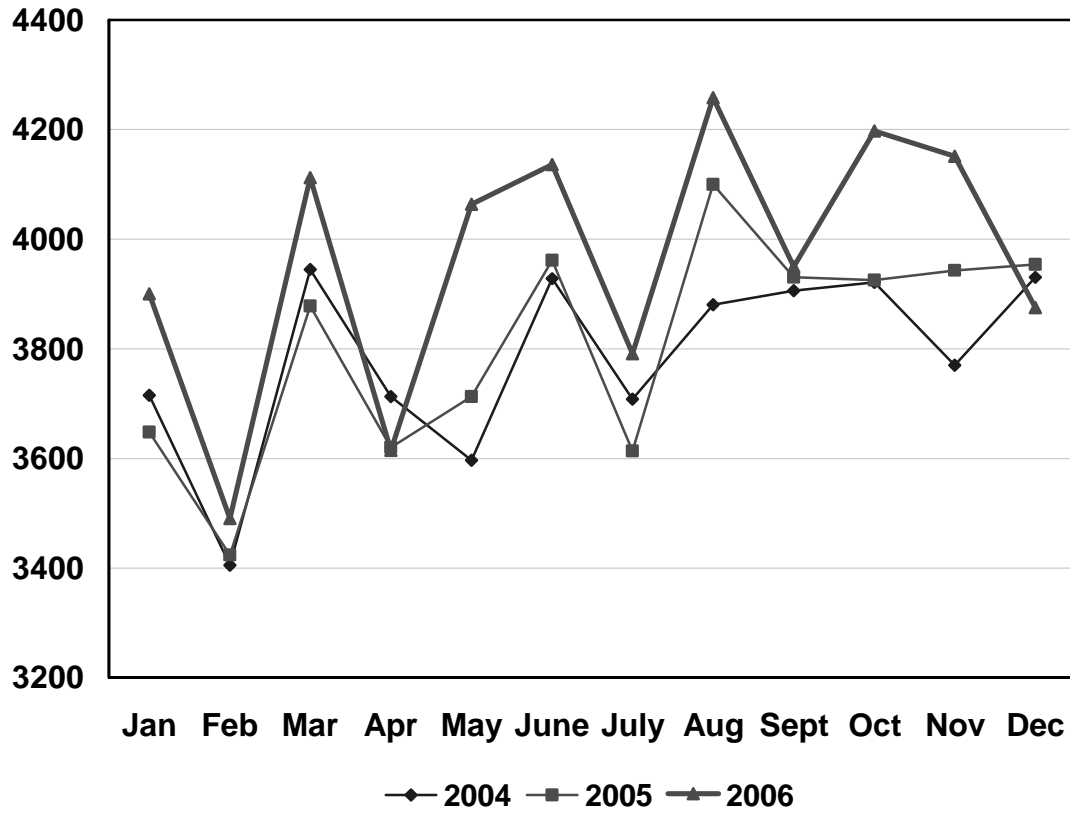
¹ Preliminary

**Federally Inspected Slaughter: Percent of Total Commercial
Slaughter by Species, Month, and Total, United States, 2006 and 2005 Total**

Month	Species			
	Cattle	Calves	Hogs	Sheep
	<i>Percent</i>	<i>Percent</i>	<i>Percent</i>	<i>Percent</i>
Jan 2006	98.1	97.8	99.1	93.2
Feb	98.1	98.0	99.0	95.3
Mar	98.3	98.1	99.1	95.9
Apr	98.4	97.8	99.0	94.8
May	98.5	98.3	99.0	95.2
Jun	98.6	98.5	99.0	94.5
Jul	98.6	98.4	99.0	94.5
Aug	98.6	98.6	98.8	93.6
Sep	98.4	98.1	98.9	93.5
Oct	98.1	98.1	99.1	94.0
Nov	98.4	98.5	99.1	94.7
Dec	98.2	98.3	98.9	93.3
2006 Total	98.4	98.2	99.0	94.4
2005 Total	98.3	97.7	99.0	94.7

U.S. Monthly Commercial Red Meat Production

Million Pounds



**Livestock Slaughter: Average Dressed Weight, Federal Inspection
by Classification and Month, United States, 2006 and 2005 Annual ¹**

Classification	Jan	Feb	Mar	Apr	May	Jun	Jul
	<i>Pounds</i>	<i>Pounds</i>	<i>Pounds</i>	<i>Pounds</i>	<i>Pounds</i>	<i>Pounds</i>	<i>Pounds</i>
Cattle	782	784	777	759	764	778	785
Steers ²	831	827	818	800	808	828	840
Heifers ²	771	773	766	740	738	750	760
Cows ²	640	649	644	631	625	621	613
Bulls ²	920	934	930	925	916	938	915
Calves & Vealers	214	216	216	218	224	213	195
Hogs	205	204	204	204	203	200	198
Barrows & Gilts ³	201	200	200	200	199	196	194
Sows ³	312	314	310	309	310	310	309
Boars ³	232	233	238	231	231	227	223
Sheep	74	73	74	69	73	69	66
Mature Sheep ⁴	68	68	68	66	69	67	67
Lambs & Yrlngs ⁴	74	74	74	69	73	69	66
	Aug	Sep	Oct	Nov	Dec	2006 Average	2005 Average
	<i>Pounds</i>	<i>Pounds</i>	<i>Pounds</i>	<i>Pounds</i>	<i>Pounds</i>	<i>Pounds</i>	<i>Pounds</i>
Cattle	786	789	788	789	790	781	769
Steers ²	845	848	848	849	849	833	817
Heifers ²	767	773	784	791	790	767	750
Cows ²	603	609	611	612	619	622	621
Bulls ²	915	903	890	892	897	914	905
Calves & Vealers	194	211	208	195	193	207	216
Hogs	196	199	201	203	203	202	201
Barrows & Gilts ³	193	196	198	200	199	198	197
Sows ³	309	307	306	307	309	309	310
Boars ³	232	222	227	227	215	227	213
Sheep	65	66	67	70	69	70	70
Mature Sheep ⁴	68	66	65	64	64	67	69
Lambs & Yrlngs ⁴	65	66	67	70	70	70	71

¹ Species totals and classification reported by food inspectors, Inspection Operations, FSIS.

² Included in cattle average dressed weight.

³ Included in hogs average dressed weight.

⁴ Included in sheep average dressed weight.

**Commercial Red Meat Production: Number of Pounds by Month, State,
and United States, 2006 and 2005 Total ¹**

State	Jan	Feb	Mar	Apr	May	Jun	Jul
	<i>Million Pounds</i>	<i>Million Pounds</i>	<i>Million Pounds</i>	<i>Million Pounds</i>	<i>Million Pounds</i>	<i>Million Pounds</i>	<i>Million Pounds</i>
AL	2.7	2.6	3.0	2.7	2.8	2.5	2.2
AK					0.1		
AZ	33.0	27.7	35.4	28.8	33.0	31.9	33.9
AR	4.5	4.2	4.9	4.0	3.9	4.7	3.6
CA	127.7	114.6	142.4	121.7	136.0	144.6	130.5
CO	149.4	137.7	150.6	142.2	171.2	179.7	167.7
DE-MD	3.3	2.9	3.5	2.8	3.4	3.3	2.8
FL	4.9	4.7	5.3	4.8	5.4	5.0	5.2
GA	10.9	9.4	11.1	10.8	12.0	11.3	11.3
HI	0.8	0.7	0.9	0.8	0.9	0.9	0.9
ID	23.4	23.8	28.4	22.2	22.6	26.1	21.6
IL	226.8	211.1	245.2	212.5	223.2	227.5	203.9
IN	130.0	115.6	136.3	118.3	123.4	114.2	109.9
IA	579.4	515.4	578.4	502.8	532.2	511.9	479.8
KS	472.2	414.0	529.3	469.3	549.4	578.5	525.1
KY	45.3	37.1	43.8	36.5	39.5	38.5	38.9
LA	0.6	0.8	0.9	0.7	0.7	0.7	0.6
MI	33.5	30.8	36.5	34.6	38.9	42.6	36.9
MN	206.5	179.8	209.0	173.3	196.7	199.9	185.7
MS	27.7	23.9	28.1	23.1	24.3	23.7	20.2
MO	50.0	55.6	70.4	65.7	69.8	71.4	66.7
MT	1.3	1.2	1.1	1.0	1.1	1.2	1.0
NE	575.3	527.2	577.2	541.0	639.7	662.3	609.5
NV	0.1	0.1	0.1	0.1	0.1		0.1
N ENG ²	1.1	0.9	0.9	1.0	1.1	1.0	0.8
NJ	4.3	3.7	4.3	3.7	4.4	4.2	3.8
NM	0.5	0.5	0.4	0.5	0.5	0.4	0.3
NY	3.1	2.6	2.8	2.5	3.0	3.1	2.7
NC	205.5	178.9	207.9	173.6	194.4	189.2	170.5
ND	3.0	2.7	3.2	2.7	3.0	2.8	2.4
OH	24.6	21.8	25.5	21.6	24.1	24.3	22.0
OK	91.4	82.0	94.9	88.2	87.2	85.9	79.2
OR	4.0	3.6	4.0	3.7	4.3	4.4	4.0
PA	99.1	92.3	110.1	91.5	101.3	101.7	95.4
SC	20.9	19.3	21.7	19.5	21.4	21.0	18.9
SD	91.3	85.0	81.8	70.6	76.5	69.8	70.1
TN	19.0	15.2	18.2	12.5	15.7	15.8	15.2
TX	377.4	316.8	430.9	374.6	454.2	478.2	423.3
UT	40.2	39.6	44.6	36.0	39.1	45.6	40.2
VA	36.5	34.3	40.6	32.8	32.3	29.6	30.6
WA	61.4	57.5	67.2	60.8	56.4	57.7	49.8
WV	0.6	0.4	0.4	0.4	0.3	0.3	0.3
WI	106.0	91.3	110.4	98.7	113.9	118.1	102.8
WY	0.6	0.5	0.5	0.4	0.5	0.5	0.5
US ³	3,899.6	3,489.9	4,112.1	3,614.8	4,063.8	4,136.2	3,790.6
PR ⁴	2.4	2.2	2.5	2.0	2.1	2.1	2.4

See footnote(s) at end of table.

--continued

**Commercial Red Meat Production: Number of Pounds by Month, State,
and United States, 2006 and 2005 Total ¹ (continued)**

State	Aug	Sep	Oct	Nov	Dec	2006 Total	2005 Total
	<i>Million Pounds</i>	<i>Million Pounds</i>	<i>Million Pounds</i>	<i>Million Pounds</i>	<i>Million Pounds</i>	<i>Million Pounds</i>	<i>Million Pounds</i>
AL	2.8	2.4	2.6	2.4	2.1	30.6	31.0
AK	0.1	0.1	0.1	0.1	0.1	0.7	0.7
AZ	34.7	31.5	30.8	33.8	32.1	386.5	360.5
AR	4.5	4.4	4.9	5.3	5.6	54.3	56.8
CA	138.9	129.7	142.5	137.7	141.5	1,607.6	1,469.1
CO	169.6	133.3	152.3	151.1	123.8	1,828.5	1,761.4
DE-MD	3.7	3.3	3.6	3.4	3.3	39.4	37.8
FL	6.3	5.5	6.0	6.9	6.6	66.7	54.0
GA	13.5	13.5	15.5	15.0	13.6	147.9	135.3
HI	1.0	0.9	0.9	0.8	0.8	10.1	9.2
ID	21.1	19.0	9.4	3.9	3.8	225.4	312.7
IL	232.6	227.6	252.4	246.4	228.3	2,737.4	2,675.9
IN	129.6	121.0	138.9	137.6	125.8	1,500.5	1,436.9
IA	547.4	546.6	599.0	590.2	556.5	6,539.7	6,481.6
KS	585.2	515.5	500.1	503.6	492.3	6,134.5	5,811.3
KY	43.8	42.2	44.8	45.9	42.8	499.1	472.2
LA	0.7	0.6	0.9	0.9	0.7	8.9	12.1
MI	41.5	39.1	43.2	38.9	39.1	455.5	391.8
MN	207.2	198.8	217.9	212.7	200.3	2,387.8	2,290.5
MS	24.8	21.3	26.5	24.9	21.6	290.1	290.5
MO	84.6	88.7	102.6	110.2	112.4	948.2	484.5
MT	1.2	1.0	2.0	1.9	2.1	16.2	17.4
NE	667.5	597.2	639.5	632.4	558.3	7,226.8	7,047.5
NV	0.1		0.1	0.1	0.1	0.8	1.1
N ENG ²	1.2	1.2	1.4	1.2	1.2	12.9	12.6
NJ	4.6	4.3	4.8	4.8	5.1	51.9	49.1
NM	0.5	0.6	0.7	0.6	0.6	6.1	6.7
NY	3.1	2.7	3.2	3.2	3.1	35.1	39.4
NC	197.3	186.7	200.6	195.4	192.5	2,292.5	2,237.4
ND	2.6	2.4	2.9	2.5	2.5	32.9	33.9
OH	25.5	24.0	26.4	24.6	24.6	288.9	290.4
OK	89.7	86.8	92.8	90.9	81.1	1,050.0	1,068.2
OR	5.0	4.3	4.8	4.4	4.1	50.7	43.7
PA	105.4	102.1	111.7	104.6	107.5	1,222.6	1,156.7
SC	21.4	19.7	21.9	21.8	20.6	248.1	241.6
SD	75.0	77.3	83.7	85.6	81.0	947.5	1,002.9
TN	18.3	19.9	21.8	20.6	18.7	211.0	215.6
TX	478.3	419.0	412.1	404.4	357.7	4,926.9	4,686.9
UT	47.5	43.8	46.2	46.0	33.2	502.0	461.3
VA	32.8	35.0	33.4	37.8	34.9	410.6	658.0
WA	66.0	67.8	72.4	71.8	68.0	756.7	618.0
WV	0.5	0.5	0.9	0.7	0.7	5.9	6.2
WI	119.7	108.1	118.6	124.1	123.6	1,335.5	1,233.7
WY	0.9	0.5	0.3	0.5	0.5	6.2	6.5
US ³	4,257.6	3,949.9	4,197.2	4,151.4	3,874.5	47,537.3	45,710.5
PR ⁴	2.7	2.5	2.8	2.6	2.5	28.9	

¹ Includes total beef, veal, pork, and lamb and mutton, excluding farm slaughter.

² N ENG includes CT, ME, MA, NH, RI, and VT.

³ Totals based on unrounded data and may not equal sum of parts. Puerto Rico is not included in US totals.

⁴ Puerto Rico Red Meat Production for 2005 is not available.

**Livestock Slaughter: Number of Head Slaughtered and Average Live Weight
by Species and Month, United States, 2006 and 2005 Total ¹**

Species	Unit	Jan	Feb	Mar
Cattle				
Number				
Fed. Insp.	Thou	2,591.3	2,301.8	2,806.1
Other	Thou	51.3	44.8	47.9
Commercial ³	Thou	2,642.6	2,346.6	2,854.0
Live Weight/Head				
Fed. Insp.	Lbs	1,288	1,286	1,271
Other	Lbs	1,133	1,136	1,145
Commercial	Lbs	1,285	1,284	1,269
Calves				
Number				
Fed. Insp.	Thou	54.3	51.6	57.9
Other	Thou	1.2	1.0	1.1
Commercial ³	Thou	55.5	52.7	59.1
Live Weight/Head				
Fed. Insp.	Lbs	353	356	358
Other	Lbs	418	393	416
Commercial	Lbs	355	357	359
Hogs				
Number				
Fed. Insp.	Thou	8,833.5	7,977.7	9,148.2
Other	Thou	82.7	77.9	87.6
Commercial ³	Thou	8,916.2	8,055.6	9,235.8
Live Weight/Head				
Fed. Insp.	Lbs	273	272	272
Other	Lbs	235	237	240
Commercial	Lbs	273	271	271
Sheep and Lambs				
Number				
Fed. Insp.	Thou	209.9	192.7	239.6
Other	Thou	15.3	9.6	10.2
Commercial ³	Thou	225.2	202.2	249.8
Live Weight/Head				
Fed. Insp.	Lbs	146	146	147
Other	Lbs	106	115	109
Commercial	Lbs	143	144	145
Goats ⁴				
Number				
Fed. Insp.	Thou	45.8	34.2	45.2
Other	Thou	16.7	12.6	13.9
Commercial ³	Thou	62.5	46.8	59.2
Live Weight/Head				
Fed. Insp.	Lbs	66	66	65
Other	Lbs	73	62	77
Commercial	Lbs	68	65	68
Bison ⁴				
Number				
Fed. Insp.	Thou	4.1	3.1	3.6
Other	Thou	1.7	1.3	1.3
Commercial ³	Thou	5.8	4.4	4.9

See footnote(s) at end of table.

--continued

**Livestock Slaughter: Number of Head Slaughtered and Average Live Weight
by Species and Month, United States, 2006 and 2005 Total ¹ (continued)**

Species	Unit	Apr	May	Jun
Cattle				
Number				
Fed. Insp.	Thou	2,566.0	2,993.0	3,115.8
Other	Thou	42.6	46.1	43.6
Commercial ³	Thou	2,608.6	3,039.1	3,159.4
Live Weight/Head				
Fed. Insp.	Lbs	1,241	1,246	1,266
Other	Lbs	1,142	1,132	1,131
Commercial	Lbs	1,240	1,244	1,264
Calves				
Number				
Fed. Insp.	Thou	46.7	55.9	57.8
Other	Thou	1.0	1.0	0.9
Commercial ³	Thou	47.7	56.9	58.6
Live Weight/Head				
Fed. Insp.	Lbs	360	371	352
Other	Lbs	410	404	400
Commercial	Lbs	361	372	353
Hogs				
Number				
Fed. Insp.	Thou	7,883.6	8,449.8	8,256.4
Other	Thou	75.7	86.7	86.7
Commercial ³	Thou	7,959.3	8,536.5	8,343.1
Live Weight/Head				
Fed. Insp.	Lbs	272	271	267
Other	Lbs	232	227	224
Commercial	Lbs	272	270	267
Sheep and Lambs				
Number				
Fed. Insp.	Thou	234.3	214.8	200.0
Other	Thou	12.9	10.8	11.5
Commercial ³	Thou	247.1	225.6	211.5
Live Weight/Head				
Fed. Insp.	Lbs	138	144	137
Other	Lbs	101	108	96
Commercial	Lbs	136	142	135
Goats ⁴				
Number				
Fed. Insp.	Thou	49.9	48.2	48.0
Other	Thou	8.4	9.1	14.1
Commercial ³	Thou	58.3	57.3	62.1
Live Weight/Head				
Fed. Insp.	Lbs	61	62	61
Other	Lbs	74	72	63
Commercial	Lbs	62	63	62
Bison ⁴				
Number				
Fed. Insp.	Thou	2.8	3.3	3.4
Other	Thou	1.1	1.2	1.3
Commercial ³	Thou	3.9	4.5	4.6

See footnote(s) at end of table.

--continued

**Livestock Slaughter: Number of Head Slaughtered and Average Live Weight
by Species and Month, United States, 2006 and 2005 Total ¹ (continued)**

Species	Unit	Jul	Aug	Sep	Oct
Cattle					
Number					
Fed. Insp.	Thou	2,794.9	3,089.0	2,720.9	2,802.6
Other	Thou	39.1	45.4	45.6	55.5
Commercial ³	Thou	2,834.0	3,134.4	2,766.6	2,858.1
Live Weight/Head					
Fed. Insp.	Lbs	1,275	1,278	1,287	1,294
Other	Lbs	1,140	1,150	1,143	1,143
Commercial	Lbs	1,273	1,276	1,285	1,291
Calves					
Number					
Fed. Insp.	Thou	57.0	65.8	56.5	62.3
Other	Thou	1.0	0.9	1.1	1.2
Commercial ³	Thou	57.9	66.7	57.6	63.6
Live Weight/Head					
Fed. Insp.	Lbs	324	321	350	346
Other	Lbs	394	400	400	416
Commercial	Lbs	325	322	351	347
Hogs					
Number					
Fed. Insp.	Thou	7,805.1	8,990.9	8,738.1	9,541.2
Other	Thou	76.9	104.9	94.6	90.8
Commercial ³	Thou	7,882.0	9,095.7	8,832.7	9,632.0
Live Weight/Head					
Fed. Insp.	Lbs	264	262	267	269
Other	Lbs	225	229	232	237
Commercial	Lbs	263	262	266	269
Sheep and Lambs					
Number					
Fed. Insp.	Thou	191.2	212.6	204.9	223.1
Other	Thou	11.2	14.5	14.2	14.1
Commercial ³	Thou	202.4	227.1	219.1	237.3
Live Weight/Head					
Fed. Insp.	Lbs	131	130	131	133
Other	Lbs	107	105	107	102
Commercial	Lbs	130	129	129	131
Goats ⁴					
Number					
Fed. Insp.	Thou	43.9	50.4	52.5	54.7
Other	Thou	10.8	15.8	17.8	15.0
Commercial ³	Thou	54.7	66.2	70.2	69.7
Live Weight/Head					
Fed. Insp.	Lbs	61	61	60	62
Other	Lbs	55	42	50	54
Commercial	Lbs	60	57	58	60
Bison ⁴					
Number					
Fed. Insp.	Thou	3.6	3.3	3.6	3.4
Other	Thou	1.1	1.3	1.2	1.6
Commercial ³	Thou	4.7	4.6	4.8	4.9

See footnote(s) at end of table.

--continued

**Livestock Slaughter: Number of Head Slaughtered and Average Live Weight
by Species and Month, United States, 2006 and 2005 Total ¹ (continued)**

Species	Unit	Nov	Dec	2006 Total ²	2005 Total ²
Cattle					
Number					
Fed. Insp.	Thou	2,797.2	2,566.3	33,145.0	31,831.5
Other	Thou	45.2	46.2	553.3	556.1
Commercial ³	Thou	2,842.4	2,612.5	33,698.3	32,387.7
Live Weight/Head					
Fed. Insp.	Lbs	1,297	1,303	1,277	1,259
Other	Lbs	1,132	1,158	1,141	1,121
Commercial	Lbs	1,295	1,300	1,275	1,256
Calves					
Number					
Fed. Insp.	Thou	65.6	67.2	698.7	717.6
Other	Thou	1.0	1.1	12.6	16.7
Commercial ³	Thou	66.6	68.4	711.3	734.4
Live Weight/Head					
Fed. Insp.	Lbs	325	322	344	352
Other	Lbs	415	398	406	413
Commercial	Lbs	327	324	345	353
Hogs					
Number					
Fed. Insp.	Thou	9,276.4	8,787.6	103,688.5	102,519.0
Other	Thou	88.5	95.2	1,048.1	1,062.5
Commercial ³	Thou	9,364.9	8,882.8	104,736.6	103,581.5
Live Weight/Head					
Fed. Insp.	Lbs	272	271	269	269
Other	Lbs	242	229	232	232
Commercial	Lbs	272	271	269	269
Sheep and Lambs					
Number					
Fed. Insp.	Thou	212.3	211.7	2,547.0	2,554.4
Other	Thou	11.9	15.3	151.4	143.4
Commercial ³	Thou	224.2	226.9	2,698.5	2,697.8
Live Weight/Head					
Fed. Insp.	Lbs	139	138	138	140
Other	Lbs	104	102	105	107
Commercial	Lbs	137	136	137	138
Goats ⁴					
Number					
Fed. Insp.	Thou	50.5	60.8	584.1	
Other	Thou	14.7	16.3	165.1	
Commercial ³	Thou	65.3	77.1	749.3	
Live Weight/Head					
Fed. Insp.	Lbs	62	63	62	
Other	Lbs	57	67	61	
Commercial	Lbs	61	64	62	
Bison ⁴					
Number					
Fed. Insp.	Thou	4.4	3.8	42.5	
Other	Thou	1.4	1.5	15.9	
Commercial ³	Thou	5.8	5.3	58.4	

¹ Excludes slaughter on farms.

² Totals based on unrounded data.

³ Commercial may not equal the sum of the parts due to rounding.

⁴ Goat and bison data not available in 2005.

**Livestock Slaughtered Under Federal Inspection: Number
of Head and Percent by Classification and Month,
United States, 2006 and 2005 Total**

Classification	Months						
	Jan	Feb	Mar	Apr	May	Jun	Jul
	<i>1,000 Head</i>	<i>1,000 Head</i>	<i>1,000 Head</i>	<i>1,000 Head</i>	<i>1,000 Head</i>	<i>1,000 Head</i>	<i>1,000 Head</i>
Cattle							
Steers	1,321.0	1,165.9	1,458.4	1,379.7	1,649.6	1,739.0	1,551.2
Heifers	778.8	733.8	877.6	763.2	885.3	888.6	788.7
All Cows	448.7	364.6	426.9	386.1	416.0	442.6	415.7
Dairy Cows	201.5	170.5	207.0	170.4	177.1	180.7	174.6
Other Cows	247.2	194.1	219.9	215.8	238.9	261.9	241.1
Bulls	42.8	37.5	43.2	37.0	42.1	45.6	39.2
Total ¹	2,591.3	2,301.8	2,806.1	2,566.0	2,993.0	3,115.8	2,794.9
Calves & Vealers	54.3	51.6	57.9	46.7	55.9	57.8	57.0
Hogs							
Barrows & Gilts	8,550.7	7,720.4	8,836.7	7,615.0	8,141.4	7,943.3	7,530.0
Sows	257.8	236.9	286.4	246.0	282.4	285.1	252.2
Boars	25.0	20.3	25.2	22.6	26.1	27.9	22.9
Total ¹	8,833.5	7,977.7	9,148.2	7,883.6	8,449.8	8,256.4	7,805.1
Sheep							
Mature Sheep	9.2	7.6	9.5	10.1	11.1	10.3	9.2
Lambs & Yearlings	200.7	185.0	230.2	224.2	203.7	189.7	182.0
Total ¹	209.9	192.7	239.6	234.3	214.8	200.0	191.2
	Percent of Total						
Cattle							
Steers	51.0	50.7	52.0	53.8	55.1	55.8	55.5
Heifers	30.1	31.9	31.3	29.7	29.6	28.5	28.2
All Cows	17.3	15.8	15.2	15.0	13.9	14.2	14.9
Dairy Cows	7.8	7.4	7.4	6.6	5.9	5.8	6.2
Other Cows	9.5	8.4	7.8	8.4	8.0	8.4	8.6
Bulls	1.7	1.6	1.5	1.4	1.4	1.5	1.4
Total ¹	100.0	100.0	100.0	100.0	100.0	100.0	100.0
Calves & Vealers	100.0	100.0	100.0	100.0	100.0	100.0	100.0
Hogs							
Barrows & Gilts	96.8	96.8	96.6	96.6	96.3	96.2	96.5
Sows	2.9	3.0	3.1	3.1	3.3	3.5	3.2
Boars	0.3	0.3	0.3	0.3	0.3	0.3	0.3
Total ¹	100.0	100.0	100.0	100.0	100.0	100.0	100.0
Sheep							
Mature Sheep	4.4	4.0	4.0	4.3	5.2	5.2	4.8
Lambs & Yearlings	95.6	96.0	96.0	95.7	94.8	94.8	95.2
Total ¹	100.0	100.0	100.0	100.0	100.0	100.0	100.0

See footnote(s) at end of table.

--continued

**Livestock Slaughtered Under Federal Inspection: Number
of Head and Percent by Classification and Month,
United States, 2006 and 2005 Total (continued)**

Classification	Months					2006 Total ¹	2005 Total ¹
	Aug	Sep	Oct	Nov	Dec		
	<i>1,000 Head</i>	<i>1,000 Head</i>	<i>1,000 Head</i>	<i>1,000 Head</i>	<i>1,000 Head</i>	<i>1,000 Head</i>	<i>1,000 Head</i>
Cattle							
Steers	1,689.9	1,460.9	1,417.7	1,364.6	1,280.4	17,478.3	16,796.8
Heifers	854.1	767.2	838.1	873.6	770.5	9,819.5	9,761.3
All Cows	496.4	448.0	499.4	515.3	476.6	5,336.2	4,775.0
Dairy Cows	216.5	206.4	218.4	219.0	211.6	2,353.5	2,252.1
Other Cows	279.8	241.6	281.0	296.3	265.0	2,982.7	2,522.9
Bulls	48.6	44.8	47.5	43.7	38.9	511.0	498.3
Total ¹	3,089.0	2,720.9	2,802.6	2,797.2	2,566.3	33,145.0	31,831.5
Calves & Vealers	65.8	56.5	62.3	65.6	67.2	698.7	717.6
Hogs							
Barrows & Gilts	8,682.9	8,434.2	9,220.6	8,953.9	8,484.3	100,113.3	99,123.2
Sows	283.1	266.7	281.7	282.5	266.3	3,227.1	3,115.9
Boars	24.9	37.2	38.9	40.0	37.0	348.1	279.9
Total ¹	8,990.9	8,738.1	9,541.2	9,276.4	8,787.6	103,688.5	102,519.0
Sheep							
Mature Sheep	10.6	9.8	10.9	9.0	10.7	118.0	129.3
Lambs & Yearlings	202.0	195.1	212.2	203.3	201.0	2,429.0	2,425.1
Total ¹	212.6	204.9	223.1	212.3	211.7	2,547.0	2,554.4
	Percent of Total						
Cattle							
Steers	54.7	53.7	50.6	48.8	49.9	52.7	52.8
Heifers	27.7	28.2	29.9	31.2	30.0	29.6	30.7
All Cows	16.1	16.5	17.8	18.4	18.6	16.1	15.0
Dairy Cows	7.0	7.6	7.8	7.8	8.2	7.1	7.1
Other Cows	9.1	8.9	10.0	10.6	10.3	9.0	7.9
Bulls	1.6	1.6	1.7	1.6	1.5	1.5	1.6
Total ¹	100.0	100.0	100.0	100.0	100.0	100.0	100.0
Calves & Vealers	100.0	100.0	100.0	100.0	100.0	100.0	100.0
Hogs							
Barrows & Gilts	96.6	96.5	96.6	96.5	96.5	96.6	96.7
Sows	3.1	3.1	3.0	3.0	3.0	3.1	3.0
Boars	0.3	0.4	0.4	0.4	0.4	0.3	0.3
Total ¹	100.0	100.0	100.0	100.0	100.0	100.0	100.0
Sheep							
Mature Sheep	5.0	4.8	4.9	4.2	5.0	4.6	5.1
Lambs & Yearlings	95.0	95.2	95.1	95.8	95.0	95.4	94.9
Total ¹	100.0	100.0	100.0	100.0	100.0	100.0	100.0

¹ Totals and percentages based on unrounded data and may not equal sum of classes.

**Cattle Slaughter: Number of Head Federally Inspected by Region,
Classification, and Month, 2006 and 2005 Total ¹**

Standard Federal Regions ²	Jan	Feb	Mar	Apr	May	Jun	Jul
	<i>1,000 Head</i>	<i>1,000 Head</i>	<i>1,000 Head</i>	<i>1,000 Head</i>	<i>1,000 Head</i>	<i>1,000 Head</i>	<i>1,000 Head</i>
1							
Steers	0.4	0.3	0.3	0.3	0.4	0.4	0.3
Heifers	0.2	0.2	0.2	0.2	0.2	0.2	0.1
All Cows							
Dairy Cows							
Other Cows							
Bulls							
Total Cattle ³	1.0	0.8	0.9	0.8	0.9	0.9	0.7
2							
Steers	1.8	1.4	1.6	1.3	1.8	1.5	1.3
Heifers	0.4	0.3	0.3	0.3	0.3	0.3	0.3
All Cows	2.6	2.2	2.5	2.2	2.8	2.8	2.1
Dairy Cows	2.5	2.1	2.3	2.1	2.7	2.7	2.0
Other Cows	0.1	0.1	0.1	0.1	0.1	0.1	0.1
Bulls	0.3	0.2	0.2	0.2	0.3	0.3	0.2
Total Cattle ³	5.0	4.1	4.5	3.9	5.2	4.9	3.9
3							
Steers	28.3	27.5	36.3	31.6	36.0	36.7	34.5
Heifers	5.5	5.8	6.6	5.3	6.2	6.5	6.0
All Cows	34.1	30.0	34.5	28.0	29.8	28.4	29.1
Dairy Cows	27.3	24.1	28.7	22.3	24.1	22.7	23.2
Other Cows	6.8	5.9	5.7	5.6	5.7	5.7	5.9
Bulls	2.0	1.7	2.3	2.4	2.8	2.4	2.1
Total Cattle ³	69.9	64.9	79.6	67.3	74.9	74.0	71.6
4							
Steers	1.1	1.0	1.2	1.0	1.1	0.9	0.8
Heifers	0.3	0.4	0.4	0.4	0.4	0.4	0.3
All Cows	49.2	41.8	47.9	45.5	48.8	49.1	50.0
Dairy Cows	12.7	9.8	11.2	9.6	10.2	9.7	10.3
Other Cows	36.5	32.0	36.8	35.9	38.6	39.4	39.8
Bulls	7.4	6.2	8.0	6.9	8.1	7.3	6.7
Total Cattle ³	58.1	49.3	57.6	53.7	58.5	57.6	57.8
5							
Steers	113.7	107.8	128.7	117.5	145.2	155.1	131.5
Heifers	32.6	31.1	38.3	30.9	38.4	40.8	34.3
All Cows	135.0	109.4	124.0	111.1	112.4	123.2	113.8
Dairy Cows	65.9	55.8	69.4	59.1	60.0	64.5	60.9
Other Cows	69.1	53.6	54.6	52.0	52.4	58.8	52.9
Bulls	7.5	6.6	8.4	7.3	8.1	9.0	7.6
Total Cattle ³	288.7	254.9	299.4	266.7	304.1	328.1	287.1

See footnote(s) at end of table.

--continued

**Cattle Slaughter: Number of Head Federally Inspected by Region,
Classification, and Month, 2006 and 2005 Total ¹ (continued)**

Standard Federal Regions ²	Aug	Sep	Oct	Nov	Dec	2006 Total ³	2005 Total ³
	<i>1,000 Head</i>	<i>1,000 Head</i>	<i>1,000 Head</i>	<i>1,000 Head</i>	<i>1,000 Head</i>	<i>1,000 Head</i>	<i>1,000 Head</i>
1							
Steers	0.4	0.5	0.6	0.5	0.5	4.9	4.5
Heifers	0.2	0.2	0.2	0.2	0.2	2.2	2.1
All Cows							
Dairy Cows							
Other Cows							
Bulls							
Total Cattle ³	1.0	1.0	1.1	1.0	1.0	11.1	11.1
2							
Steers	1.7	1.7	1.8	1.7	1.7	18.9	19.8
Heifers	0.3	0.3	0.4	0.4	0.3	3.6	3.4
All Cows	2.5	2.3	2.5	2.6	2.2	29.4	34.3
Dairy Cows	2.4	2.2	2.3	2.3	1.9	27.5	32.5
Other Cows	0.1	0.2	0.3	0.3	0.3	1.9	1.8
Bulls	0.3	0.3	0.4	0.3	0.3	3.4	3.7
Total Cattle ³	4.7	4.6	5.1	4.9	4.5	55.3	61.2
3							
Steers	35.3	32.0	36.9	33.1	34.0	402.0	376.8
Heifers	6.7	6.4	4.4	6.1	6.2	71.9	68.3
All Cows	35.7	34.3	36.6	33.9	32.4	386.7	397.5
Dairy Cows	28.4	27.2	29.1	26.9	25.7	309.8	321.2
Other Cows	7.3	7.1	7.6	7.0	6.6	76.9	76.3
Bulls	2.5	2.6	2.9	2.2	2.0	27.8	29.2
Total Cattle ³	80.1	75.2	80.9	75.3	74.6	888.4	871.7
4							
Steers	0.9	0.8	1.1	0.9	0.9	11.5	12.1
Heifers	0.5	0.2	0.3	0.3	0.3	4.2	3.5
All Cows	59.2	56.2	61.8	62.8	55.5	627.8	560.7
Dairy Cows	12.0	11.8	12.6	13.8	12.6	136.2	125.4
Other Cows	47.2	44.4	49.2	49.0	43.0	491.6	435.4
Bulls	8.1	8.0	9.0	8.1	7.0	90.9	89.2
Total Cattle ³	68.6	65.2	72.3	72.1	63.6	734.4	665.5
5							
Steers	147.5	132.2	137.6	138.6	141.7	1,597.1	1,424.2
Heifers	38.5	36.2	40.5	42.7	39.3	443.6	425.0
All Cows	133.3	122.5	143.4	152.7	146.9	1,527.6	1,399.8
Dairy Cows	76.1	73.1	78.9	81.8	79.9	825.2	738.7
Other Cows	57.2	49.4	64.5	70.9	67.0	702.4	661.1
Bulls	9.5	8.9	9.0	8.4	7.3	97.3	88.0
Total Cattle ³	328.9	299.8	330.5	342.4	335.0	3,665.6	3,337.0

See footnote(s) at end of table.

--continued

**Cattle Slaughter: Number of Head Federally Inspected by Region,
Classification, and Month, 2006 and 2005 Total ¹ (continued)**

Standard Federal Regions ²	Jan	Feb	Mar	Apr	May	Jun	Jul
	<i>1,000 Head</i>	<i>1,000 Head</i>	<i>1,000 Head</i>	<i>1,000 Head</i>	<i>1,000 Head</i>	<i>1,000 Head</i>	<i>1,000 Head</i>
6							
Steers	261.6	219.5	313.8	271.5	315.2	328.9	286.3
Heifers	149.0	130.2	175.4	156.4	206.4	210.5	180.0
All Cows	73.3	55.5	67.4	65.6	77.3	82.9	76.8
Dairy Cows	12.4	10.0	11.3	10.3	10.3	9.6	9.4
Other Cows	60.8	45.5	56.1	55.4	67.0	73.4	67.4
Bulls	11.2	10.0	10.2	8.5	9.6	9.5	8.4
Total Cattle ³	495.0	415.1	566.8	502.0	608.5	631.8	551.5
7							
Steers	661.2	584.8	722.3	701.0	842.2	879.4	795.7
Heifers	452.8	421.9	486.0	436.7	505.3	507.1	451.7
All Cows	55.2	43.3	50.4	50.2	52.5	58.4	52.4
Dairy Cows	1.5	1.5	1.9	1.7	1.1	1.4	1.3
Other Cows	53.7	41.7	48.5	48.5	51.4	57.0	51.2
Bulls	8.8	7.3	7.4	6.1	6.4	8.5	7.1
Total Cattle ³	1,178.0	1,057.3	1,266.1	1,194.1	1,406.4	1,453.4	1,306.9
8							
Steers	116.3	103.8	107.6	123.4	161.8	174.0	154.4
Heifers	97.8	98.2	116.4	88.6	90.2	91.7	87.1
All Cows							
Dairy Cows							
Other Cows							
Bulls							
Total Cattle ³	229.9	215.2	239.3	226.2	267.3	283.1	256.8
9							
Steers	77.1	68.6	86.7	75.8	86.0	92.1	91.3
Heifers	5.7	6.0	6.4	5.4	7.3	7.0	6.8
All Cows	75.3	62.3	77.0	62.6	69.0	73.1	68.9
Dairy Cows	66.6	56.0	69.5	54.8	57.8	59.2	56.7
Other Cows	8.7	6.4	7.6	7.8	11.2	13.9	12.1
Bulls	3.1	3.2	3.8	3.1	4.0	5.2	4.1
Total Cattle ³	161.1	140.2	174.0	146.8	166.3	177.4	171.2
10							
Steers	59.5	51.3	60.2	56.5	59.8	70.1	55.2
Heifers	34.6	39.9	47.5	39.2	30.5	24.3	22.2
All Cows	9.9	8.4	9.7	8.3	9.8	9.4	9.3
Dairy Cows	7.3	6.7	7.5	6.2	6.7	6.3	6.4
Other Cows	2.7	1.7	2.2	2.1	3.2	3.2	2.8
Bulls	0.5	0.5	0.6	0.5	0.6	0.7	0.7
Total Cattle ³	104.5	100.1	117.9	104.5	100.8	104.5	87.3

See footnote(s) at end of table.

--continued

**Cattle Slaughter: Number of Head Federally Inspected by Region,
Classification, and Month, 2006 and 2005 Total ¹ (continued)**

Standard Federal Regions ²	Aug	Sep	Oct	Nov	Dec	2006 Total ³	2005 Total ³
	<i>1,000 Head</i>	<i>1,000 Head</i>	<i>1,000 Head</i>	<i>1,000 Head</i>	<i>1,000 Head</i>	<i>1,000 Head</i>	<i>1,000 Head</i>
6							
Steers	326.6	299.3	281.2	255.1	234.0	3,392.9	3,411.8
Heifers	193.5	157.0	164.3	177.6	154.3	2,054.6	1,995.0
All Cows	92.9	80.1	85.0	84.6	71.5	912.8	705.3
Dairy Cows	12.0	13.7	12.8	12.0	11.8	135.4	143.4
Other Cows	80.9	66.4	72.2	72.6	59.7	777.4	562.0
Bulls	10.3	8.5	9.6	9.7	9.0	114.6	118.6
Total Cattle ³	623.2	544.9	540.1	527.0	468.8	6,474.9	6,230.8
7							
Steers	877.3	746.0	701.7	691.1	645.1	8,847.9	8,533.5
Heifers	480.4	436.8	481.8	499.8	450.8	5,611.0	5,693.3
All Cows	64.1	53.3	61.8	67.3	60.0	668.9	565.0
Dairy Cows	1.3	1.4	1.2	1.3	1.1	16.8	34.1
Other Cows	62.8	51.9	60.6	66.1	58.8	652.1	531.0
Bulls	9.4	8.8	9.0	8.6	7.5	95.1	87.1
Total Cattle ³	1,431.2	1,244.9	1,254.3	1,266.8	1,163.3	15,222.8	14,879.0
8							
Steers	148.4	110.6	123.1	115.8	93.8	1,532.8	1,467.0
Heifers	99.2	89.2	101.0	105.4	80.2	1,144.7	1,152.4
All Cows							
Dairy Cows							
Other Cows							
Bulls							
Total Cattle ³	265.6	214.7	242.4	240.0	192.0	2,872.5	2,782.2
9							
Steers	87.5	79.8	81.0	81.7	84.4	991.9	915.4
Heifers	5.7	6.8	11.0	8.0	9.2	85.3	82.7
All Cows	82.4	76.0	80.9	82.6	80.0	890.0	785.8
Dairy Cows	70.7	65.0	69.5	70.0	68.1	763.9	691.7
Other Cows	11.7	11.0	11.4	12.6	11.9	126.2	94.0
Bulls	5.0	4.4	4.4	3.5	3.3	47.0	39.8
Total Cattle ³	180.5	166.9	177.3	175.8	176.9	2,014.2	1,823.7
10							
Steers	64.4	58.2	52.6	46.2	44.5	678.4	631.8
Heifers	29.3	34.1	34.2	33.2	29.8	398.6	335.7
All Cows	10.7	10.5	11.2	11.8	11.8	120.8	181.9
Dairy Cows	7.8	6.7	7.1	6.7	6.3	81.5	113.9
Other Cows	2.9	3.8	4.1	5.1	5.4	39.3	68.0
Bulls	0.9	0.9	0.7	0.8	0.7	8.0	20.0
Total Cattle ³	105.2	103.7	98.7	91.9	86.7	1,205.8	1,169.4

¹ Missing data are not printed to avoid disclosing individual operations.

² States included in regions are as follows: 1- CT, ME, MA, NH, RI, & VT; 2- NY & NJ; 3- DE-MD, PA, VA, & WV; 4- AL, FL, GA, KY, MS, NC, SC, & TN; 5- IL, IN, MI, MN, OH, & WI; 6- AR, LA, NM, OK, & TX; 7- IA, KS, MO, & NE; 8- CO, MT, ND, SD, UT, & WY; 9- AZ, CA, HI, & NV; 10- AK, ID, OR, & WA.

³ Totals based on unrounded data and may not equal sum of parts.

**Calf Slaughter: Number of Head Federally Inspected by Region
and Month, 2006 and 2005 Total ¹**

Standard Federal Regions ²	Jan	Feb	Mar	Apr	May	Jun	Jul
	<i>1,000 Head</i>	<i>1,000 Head</i>	<i>1,000 Head</i>	<i>1,000 Head</i>	<i>1,000 Head</i>	<i>1,000 Head</i>	<i>1,000 Head</i>
1	0.2	0.3	0.3	0.2	0.4	0.3	0.2
2	15.5	13.9	15.9	11.3	13.0	14.4	15.8
3	13.6	14.1	15.5	12.3	14.8	15.2	13.8
4							
5	17.3	15.5	17.9	15.7	19.3	18.6	16.0
6	0.6	0.6	0.6	0.5	0.7	0.6	0.8
7							
8							
9	6.1	6.5	6.9	5.9	6.8	8.0	9.5
10							

See footnote(s) at end of table.

--continued

**Calf Slaughter: Number of Head Federally Inspected by Region
and Month, 2006 and 2005 Total ¹ (continued)**

Standard Federal Regions ²	Aug	Sep	Oct	Nov	Dec	2006 Total ³	2005 Total ³
	<i>1,000 Head</i>	<i>1,000 Head</i>	<i>1,000 Head</i>	<i>1,000 Head</i>	<i>1,000 Head</i>	<i>1,000 Head</i>	<i>1,000 Head</i>
1	0.3	0.3	0.3	0.3	0.2	3.3	5.1
2	20.1	15.2	18.4	21.7	21.9	196.9	184.3
3	16.9	15.0	16.3	16.8	16.5	180.7	154.9
4							
5	18.2	17.4	17.9	16.0	17.0	206.6	269.3
6	0.6	0.6	0.7	1.3	0.7	8.4	8.3
7		0.1		0.1		0.4	0.4
8				0.1		0.1	
9	8.6	7.0	7.7	8.7	9.8	91.3	82.9
10							

¹ Missing data are not printed to avoid disclosing individual operations.

² States included in regions are as follows: 1- CT, ME, MA, NH, RI, & VT; 2- NY & NJ; 3- DE-MD, PA, VA, & WV; 4- AL, FL, GA, KY, MS, NC, SC, & TN; 5- IL, IN, MI, MN, OH, & WI; 6- AR, LA, NM, OK, & TX; 7- IA, KS, MO, & NE; 8- CO, MT, ND, SD, UT, & WY; 9- AZ, CA, HI, & NV; 10- AK, ID, OR, & WA.

³ Totals based on unrounded data and may not equal sum of parts.

**Hog Slaughter: Number of Head Federally Inspected by Region,
Classification, and Month, 2006 and 2005 Total ¹**

Standard Federal Regions ²	Jan	Feb	Mar	Apr	May	Jun	Jul
	<i>1,000 Head</i>	<i>1,000 Head</i>	<i>1,000 Head</i>	<i>1,000 Head</i>	<i>1,000 Head</i>	<i>1,000 Head</i>	<i>1,000 Head</i>
1							
Barrows & Gilts	1.0	0.9	0.9	1.1	1.2	1.6	1.1
Sows							
Boars							
Total Hogs ³	1.0	1.0	1.0	1.1	1.3	1.6	1.2
2							
Barrows & Gilts	12.5	7.4	11.3	10.3	12.4	12.6	10.3
Sows	0.2	0.1	0.2	0.2	0.1	0.1	0.1
Boars	0.1			0.1	0.1	0.1	0.1
Total Hogs ³	12.8	7.6	11.5	10.6	12.6	12.8	10.5
3							
Barrows & Gilts	427.2	398.5	466.0	381.8	403.9	396.9	383.9
Sows	1.0	1.0	1.2	0.8	0.9	1.1	0.8
Boars							
Total Hogs ³	428.2	399.5	467.2	382.7	404.8	398.0	384.7
4							
Barrows & Gilts	1,386.7	1,220.3	1,410.5	1,177.6	1,313.7	1,302.5	1,209.8
Sows	82.5	70.2	82.4	63.0	74.1	72.3	67.7
Boars	2.2	1.2	0.9	0.8	1.3	1.2	1.4
Total Hogs ³	1,471.5	1,291.7	1,493.9	1,241.4	1,389.0	1,376.0	1,278.8
5							
Barrows & Gilts	2,237.2	2,008.8	2,360.7	2,006.9	2,139.6	2,102.9	1,980.3
Sows	100.2	93.4	115.5	103.4	124.2	124.4	109.4
Boars	3.2	2.9	3.4	3.1	3.3	3.7	3.3
Total Hogs ³	2,340.6	2,105.1	2,479.6	2,113.4	2,267.1	2,230.9	2,092.9

See footnote(s) at end of table.

--continued

**Hog Slaughter: Number of Head Federally Inspected by Region,
Classification, and Month, 2006 and 2005 Total ¹ (continued)**

Standard Federal Regions ²	Aug	Sep	Oct	Nov	Dec	2006 Total ³	2005 Total ³
	<i>1,000 Head</i>	<i>1,000 Head</i>	<i>1,000 Head</i>	<i>1,000 Head</i>	<i>1,000 Head</i>	<i>1,000 Head</i>	<i>1,000 Head</i>
1							
Barrows & Gilts	1.8	1.5	1.6	1.5	1.6	15.8	16.1
Sows						0.4	0.3
Boars						0.2	0.3
Total Hogs ³	1.8	1.5	1.7	1.5	1.6	16.4	16.7
2							
Barrows & Gilts	12.8	10.8	11.3	11.4	13.8	136.9	140.4
Sows	0.1	0.2	0.2	0.2	0.2	1.8	1.9
Boars	0.1	0.1	0.2	0.1	0.1	1.0	1.5
Total Hogs ³	13.0	11.1	11.6	11.6	14.0	139.7	143.8
3							
Barrows & Gilts	423.2	405.3	417.6	423.3	432.5	4,960.0	6,197.4
Sows	1.1	1.0	1.1	1.2	1.3	12.4	15.7
Boars		13.1	12.6	13.5	12.0	51.4	0.5
Total Hogs ³	424.3	419.4	431.2	437.9	445.7	5,023.8	6,213.6
4							
Barrows & Gilts	1,404.0	1,313.8	1,412.1	1,359.2	1,311.1	15,821.4	15,541.5
Sows	82.8	82.8	91.8	88.6	76.7	934.9	932.3
Boars	1.2	1.0	1.0	1.4	1.2	14.9	18.3
Total Hogs ³	1,488.0	1,397.6	1,505.0	1,449.2	1,389.0	16,771.1	16,492.0
5							
Barrows & Gilts	2,289.4	2,193.1	2,440.7	2,339.5	2,153.9	26,252.7	25,797.6
Sows	117.2	107.3	111.2	112.6	105.8	1,324.5	1,256.2
Boars	3.8	3.3	3.6	3.4	3.4	40.6	32.0
Total Hogs ³	2,410.4	2,303.7	2,555.5	2,455.5	2,263.1	27,617.8	27,085.8

See footnote(s) at end of table.

--continued

**Hog Slaughter: Number of Head Federally Inspected by Region,
Classification, and Month, 2006 and 2005 Total ¹ (continued)**

Standard Federal Regions ²	Jan	Feb	Mar	Apr	May	Jun	Jul
	<i>1,000 Head</i>	<i>1,000 Head</i>	<i>1,000 Head</i>	<i>1,000 Head</i>	<i>1,000 Head</i>	<i>1,000 Head</i>	<i>1,000 Head</i>
6							
Barrows & Gilts	428.2	388.1	449.8	418.2	419.2	420.8	394.2
Sows	20.8	18.8	22.9	18.0	18.3	21.4	19.0
Boars	0.1	0.1	0.1	0.1	0.1	0.1	0.1
Total Hogs ³	449.1	407.0	472.9	436.3	437.6	442.3	413.4
7							
Barrows & Gilts	3,382.4	3,076.8	3,491.8	3,065.2	3,246.4	3,135.6	2,991.9
Sows							
Boars							
Total Hogs ³	3,450.9	3,140.8	3,570.7	3,135.1	3,323.0	3,217.3	3,057.7
8							
Barrows & Gilts	431.9	405.3	387.5	329.9	358.5	322.6	331.0
Sows	3.6	5.2	5.6	8.9	9.3	6.6	7.1
Boars							
Total Hogs ³	435.5	410.5	393.2	338.9	367.8	329.2	338.1
9							
Barrows & Gilts	212.3	185.4	226.6	196.4	215.7	217.0	198.6
Sows							
Boars							
Total Hogs ³	212.4	185.4	226.7	196.5	215.8	217.1	198.7
10							
Barrows & Gilts	31.3	28.8	31.5	27.6	30.8	31.0	28.8
Sows	0.1	0.1	0.1	0.1	0.1	0.1	0.1
Boars							
Total Hogs ³	31.5	29.0	31.6	27.7	30.9	31.1	29.0

See footnote(s) at end of table.

--continued

**Hog Slaughter: Number of Head Federally Inspected by Region,
Classification, and Month, 2006 and 2005 Total ¹ (continued)**

Standard Federal Regions ²	Aug	Sep	Oct	Nov	Dec	2006 Total ³	2005 Total ³
	<i>1,000 Head</i>	<i>1,000 Head</i>	<i>1,000 Head</i>	<i>1,000 Head</i>	<i>1,000 Head</i>	<i>1,000 Head</i>	<i>1,000 Head</i>
6							
Barrows & Gilts	451.9	435.6	458.5	444.2	399.3	5,108.0	5,191.1
Sows	20.6	21.5	23.7	26.7	25.5	257.0	259.2
Boars	0.1	0.1	0.1	0.1	0.1	1.3	0.9
Total Hogs ³	472.6	457.2	482.3	471.0	424.9	5,366.4	5,451.3
7							
Barrows & Gilts	3,482.3	3,476.6	3,833.0	3,731.6	3,562.2	40,475.8	38,461.0
Sows							
Boars							
Total Hogs ³	3,556.2	3,543.0	3,904.4	3,802.6	3,631.0	41,332.9	39,280.2
8							
Barrows & Gilts	356.8	368.9	395.1	400.9	369.1	4,457.6	4,900.4
Sows	6.8	6.8	3.4	3.6	8.1	74.9	55.3
Boars						0.1	0.1
Total Hogs ³	363.6	375.7	398.4	404.5	377.2	4,532.6	4,955.8
9							
Barrows & Gilts	227.5	200.5	218.3	211.3	211.0	2,520.6	2,519.8
Sows							
Boars							
Total Hogs ³	227.7	200.6	218.4	211.4	211.1	2,521.9	2,520.9
10							
Barrows & Gilts	33.2	28.1	32.6	31.1	29.8	364.5	357.8
Sows	0.1	0.1	0.1	0.1	0.1	1.1	0.9
Boars						0.3	0.2
Total Hogs ³	33.2	28.2	32.7	31.2	30.0	365.9	358.9

¹ Missing data are not printed to avoid disclosing individual operations.

² States included in regions are as follows: 1- CT, ME, MA, NH, RI, & VT; 2- NY & NJ; 3- DE-MD, PA, VA, & WV; 4- AL, FL, GA, KY, MS, NC, SC, & TN; 5- IL, IN, MI, MN, OH, & WI; 6- AR, LA, NM, OK, & TX; 7- IA, KS, MO, & NE; 8- CO, MT, ND, SD, UT, & WY; 9- AZ, CA, HI, & NV; 10- AK, ID, OR, & WA.

³ Totals based on unrounded data and may not equal sum of parts.

**Sheep and Lamb Slaughter: Number of Head Federally Inspected by Region,
Classification, and Month, 2006 and 2005 Total ¹**

Standard Federal Regions ²	Jan	Feb	Mar	Apr	May	Jun	Jul
	<i>1,000 Head</i>	<i>1,000 Head</i>	<i>1,000 Head</i>	<i>1,000 Head</i>	<i>1,000 Head</i>	<i>1,000 Head</i>	<i>1,000 Head</i>
1							
Mature Sheep							
Lambs & Yearlings							
Total Sheep ³							
2							
Mature Sheep	1.0	0.8	1.3	1.6	1.4	1.6	1.3
Lambs & Yearlings	8.4	6.7	8.3	18.9	10.7	9.9	9.0
Total Sheep ³	9.5	7.5	9.6	20.5	12.1	11.5	10.3
3							
Mature Sheep	0.3	0.4	0.3	1.1	0.4	0.4	0.4
Lambs & Yearlings	7.7	5.6	7.5	9.9	7.6	7.7	7.3
Total Sheep ³	8.1	6.0	7.8	11.0	8.0	8.1	7.7
4							
Mature Sheep	1.0	0.8	0.9	1.0	1.4	1.4	1.0
Lambs & Yearlings	1.9	1.6	1.6	2.0	1.8	2.1	1.8
Total Sheep ³	2.8	2.4	2.6	3.0	3.2	3.4	2.9
5							
Mature Sheep	3.5	2.6	3.2	2.9	3.4	3.2	3.2
Lambs & Yearlings	27.8	24.6	28.5	31.3	23.9	23.7	21.0
Total Sheep ³	31.4	27.1	31.7	34.2	27.3	27.0	24.3

See footnote(s) at end of table.

--continued

**Sheep and Lamb Slaughter: Number of Head Federally Inspected by Region,
Classification, and Month, 2006 and 2005 Total ¹ (continued)**

Standard Federal Regions ²	Aug	Sep	Oct	Nov	Dec	2006 Total ³	2005 Total ³
	<i>1,000 Head</i>	<i>1,000 Head</i>	<i>1,000 Head</i>	<i>1,000 Head</i>	<i>1,000 Head</i>	<i>1,000 Head</i>	<i>1,000 Head</i>
1							
Mature Sheep							
Lambs & Yearlings							
Total Sheep ³							
2							
Mature Sheep	1.5	1.3	1.4	1.1	1.6	15.9	17.9
Lambs & Yearlings	10.0	11.3	11.6	9.8	13.9	128.6	122.5
Total Sheep ³	11.5	12.6	13.0	10.9	15.5	144.5	140.4
3							
Mature Sheep	0.3	0.4	0.3	0.4	0.5	5.2	5.8
Lambs & Yearlings	8.1	7.9	8.7	7.6	8.0	93.6	97.1
Total Sheep ³	8.4	8.3	9.0	8.0	8.4	98.8	102.9
4							
Mature Sheep	1.1	0.8	1.0	0.8	0.9	12.0	14.4
Lambs & Yearlings	2.2	2.4	2.7	2.1	2.5	24.8	21.2
Total Sheep ³	3.3	3.2	3.6	2.9	3.5	36.8	35.6
5							
Mature Sheep	4.0	3.8	4.4	3.3	4.2	41.7	55.1
Lambs & Yearlings	26.7	24.2	23.1	25.8	25.8	306.5	319.6
Total Sheep ³	30.7	28.0	27.5	29.1	30.0	348.2	374.6

See footnote(s) at end of table.

--continued

**Sheep and Lamb Slaughter: Number of Head Federally Inspected by Region,
Classification, and Month, 2006 and 2005 Total ¹ (continued)**

Standard Federal Regions ²	Jan	Feb	Mar	Apr	May	Jun	Jul
	<i>1,000 Head</i>	<i>1,000 Head</i>	<i>1,000 Head</i>	<i>1,000 Head</i>	<i>1,000 Head</i>	<i>1,000 Head</i>	<i>1,000 Head</i>
6							
Mature Sheep	0.3	0.2	0.4	0.2	0.2	0.1	
Lambs & Yearlings	10.6	5.6	8.6	3.4	8.0	2.7	0.2
Total Sheep ³	10.9	5.8	9.0	3.6	8.2	2.8	0.2
7							
Mature Sheep	0.6	0.5	0.7	0.6	0.9	0.8	0.7
Lambs & Yearlings	33.8	36.0	41.4	34.2	24.9	27.6	34.3
Total Sheep ³	34.4	36.4	42.1	34.8	25.7	28.4	35.0
8							
Mature Sheep	1.8	1.8	2.0	1.8	2.2	2.0	1.6
Lambs & Yearlings	83.4	81.2	103.5	92.9	92.6	87.5	82.0
Total Sheep ³	85.2	83.1	105.6	94.7	94.8	89.5	83.6
9							
Mature Sheep							
Lambs & Yearlings							
Total Sheep ³							
10							
Mature Sheep	0.1	0.1	0.1	0.1	0.2	0.1	0.1
Lambs & Yearlings	1.6	1.3	1.4	2.0	1.8	1.7	1.8
Total Sheep ³	1.6	1.4	1.5	2.1	1.9	1.8	1.9

See footnote(s) at end of table.

--continued

**Sheep and Lamb Slaughter: Number of Head Federally Inspected by Region,
Classification, and Month, 2006 and 2005 Total ¹ (continued)**

Standard Federal Regions ²	Aug	Sep	Oct	Nov	Dec	2006 Total ³	2005 Total ³
	<i>1,000 Head</i>	<i>1,000 Head</i>	<i>1,000 Head</i>	<i>1,000 Head</i>	<i>1,000 Head</i>	<i>1,000 Head</i>	<i>1,000 Head</i>
6							
Mature Sheep	0.2	0.3	0.3	0.3	0.3	2.8	1.3
Lambs & Yearlings	0.2	0.2	0.4	0.3	0.4	40.6	49.8
Total Sheep ³	0.4	0.5	0.6	0.5	0.7	43.3	51.2
7							
Mature Sheep	0.6	0.5	0.3	0.3	0.2	6.6	3.7
Lambs & Yearlings	35.0	37.2	40.5	35.0	35.3	415.2	416.8
Total Sheep ³	35.6	37.7	40.8	35.3	35.5	421.8	420.5
8							
Mature Sheep	1.8	1.9	1.9	1.7	1.7	22.3	20.9
Lambs & Yearlings	89.0	83.5	94.8	93.4	87.3	1,071.3	1,032.9
Total Sheep ³	90.9	85.4	96.7	95.1	89.1	1,093.6	1,053.8
9							
Mature Sheep							
Lambs & Yearlings							
Total Sheep ³							
10							
Mature Sheep	0.1	0.2	0.3	0.1	0.2	1.6	1.3
Lambs & Yearlings	2.5	2.2	2.1	1.8	2.0	22.3	19.3
Total Sheep ³	2.6	2.4	2.5	1.9	2.2	23.9	20.6

¹ Missing data are not printed to avoid disclosing individual operations.

² States included in regions are as follows: 1- CT, ME, MA, NH, RI, & VT; 2- NY & NJ; 3- DE-MD, PA, VA, & WV; 4- AL, FL, GA, KY, MS, NC, SC, & TN; 5- IL, IN, MI, MN, OH, & WI; 6- AR, LA, NM, OK, & TX; 7- IA, KS, MO, & NE; 8- CO, MT, ND, SD, UT, & WY; 9- AZ, CA, HI, & NV; 10- AK, ID, OR, & WA.

³ Totals based on unrounded data and may not equal sum of parts.

**Commercial Cattle Slaughter: Number of Head by Month,
State, and United States, 2006 and 2005 Total^{1 2}**

State	Jan	Feb	Mar	Apr	May	Jun	Jul
	<i>1,000 Head</i>	<i>1,000 Head</i>	<i>1,000 Head</i>	<i>1,000 Head</i>	<i>1,000 Head</i>	<i>1,000 Head</i>	<i>1,000 Head</i>
AL	0.3	0.4	0.7	0.5	0.5	0.3	0.3
AK	0.1	0.1	0.1		0.1		
AZ							
AR	0.8	0.9	1.2	1.0	1.0	0.9	0.8
CA	120.0	105.6	130.1	111.4	124.7	138.0	128.8
CO	168.8	157.1	173.1	170.8	206.9	213.5	195.3
DE-MD	3.5	3.1	3.9	3.1	3.8	3.7	3.1
FL							
GA	18.8	16.7	19.7	19.5	21.5	20.6	21.1
HI	0.8	0.8	1.0	0.8	1.0	0.9	0.9
ID							
IL							
IN	3.4	2.9	3.0	2.5	3.0	2.7	3.0
IA							
KS	575.6	507.6	662.5	603.6	700.2	717.2	640.6
KY	1.7	1.5	1.5	1.3	1.5	1.1	1.0
LA	0.6	0.8	0.9	0.7	0.8	0.9	0.8
MI	37.5	33.8	40.4	38.5	43.2	47.3	41.6
MN	63.3	51.8	56.1	47.6	57.6	65.0	58.8
MS	0.1	0.1	0.1	0.1	0.1	0.1	0.1
MO	8.1	6.5	7.6	6.6	7.2	7.0	6.4
MT	1.6	1.5	1.4	1.2	1.4	1.4	1.0
NE	555.9	507.2	558.0	548.6	653.3	679.9	613.4
NV	0.1	0.1	0.1	0.1	0.1	0.1	0.1
N ENG ³	1.3	1.0	1.0	0.9	1.1	1.0	0.8
NJ	2.3	2.0	2.3	1.9	2.4	2.2	1.9
NM	0.9	0.9	0.8	0.9	0.9	0.7	0.6
NY	2.9	2.2	2.4	2.2	2.9	2.9	2.1
NC	17.7	13.1	15.9	14.2	14.8	15.4	15.0
ND	1.2	0.9	1.0	0.9	1.0	1.1	0.9
OH	8.6	7.7	9.1	7.6	8.1	8.3	7.4
OK	2.7	2.3	2.8	2.5	2.6	2.3	1.8
OR	1.8	1.6	1.9	1.8	2.2	2.2	1.9
PA	68.1	63.2	77.2	65.2	72.0	70.9	68.9
SC	12.7	11.3	13.3	12.1	13.0	13.3	12.8
SD							
TN	1.5	1.1	1.4	1.1	1.3	1.1	1.1
TX	496.3	416.4	567.6	502.8	609.5	633.0	552.3
UT	51.4	50.5	57.4	47.0	51.2	58.4	51.2
VA	1.0	1.0	1.0	0.9	1.1	0.9	0.7
WA	76.2	72.1	83.9	77.4	72.8	72.5	62.1
WV	0.9	0.5	0.5	0.5	0.4	0.3	0.3
WI	126.0	106.2	130.0	116.6	130.7	135.7	119.7
WY	0.8	0.6	0.5	0.5	0.6	0.6	0.6
US ⁴	2,642.6	2,346.6	2,854.0	2,608.6	3,039.1	3,159.4	2,834.0
PR	3.9	3.8	4.2	3.2	3.2	3.2	3.3

See footnote(s) at end of table.

--continued

**Commercial Cattle Slaughter: Number of Head by Month,
State, and United States, 2006 and 2005 Total ^{1 2} (continued)**

State	Aug	Sep	Oct	Nov	Dec	2006 Total	2005 Total
	<i>1,000 Head</i>	<i>1,000 Head</i>	<i>1,000 Head</i>	<i>1,000 Head</i>	<i>1,000 Head</i>	<i>1,000 Head</i>	<i>1,000 Head</i>
AL	0.3	0.2	0.5	0.3	0.3	4.7	4.7
AK	0.1	0.1	0.1	0.1	0.1	0.8	0.9
AZ							
AR	0.8	0.9	1.1	0.7	0.9	10.9	9.5
CA	136.8	127.7	138.9	133.8	137.4	1,533.0	1,362.4
CO	195.1	151.7	173.2	171.3	139.2	2,116.1	2,086.7
DE-MD	4.1	3.6	3.9	3.6	3.6	43.3	42.3
FL							
GA	25.4	25.4	29.2	28.1	24.6	270.7	238.1
HI	1.0	0.9	0.9	0.7	0.8	10.5	9.2
ID							376.0
IL							
IN	3.7	3.3	3.7	3.5	3.2	37.8	38.9
IA							
KS	710.7	624.0	603.6	606.7	590.6	7,543.1	7,321.4
KY	1.0	1.1	1.6	1.1	1.4	15.6	16.4
LA	0.9	0.9	1.1	1.0	0.7	10.3	13.0
MI	46.5	44.3	49.7	44.2	44.1	511.2	441.4
MN	65.8	55.0	65.6	70.3	67.7	724.7	644.0
MS	0.1	0.1	0.1	0.1	0.1	1.2	
MO	7.6	7.2	8.4	5.9	7.6	86.0	83.0
MT	1.3	1.1	2.5	2.4	2.5	19.4	20.7
NE	664.8	567.8	596.4	600.8	522.6	7,068.5	7,028.9
NV	0.1	0.1	0.1	0.1	0.1	1.0	1.2
N ENG ³	1.1	1.3	1.5	1.3	1.2	13.5	13.7
NJ	2.4	2.3	2.4	2.3	2.3	26.7	26.0
NM	0.9	1.0	1.3	1.2	1.1	11.0	11.5
NY	2.4	2.5	2.9	2.9	2.4	30.6	37.5
NC	17.5	16.7	18.8	18.7	16.9	194.8	192.1
ND	0.9	0.9	1.3	0.7	1.0	11.8	11.9
OH	9.3	8.8	10.4	9.6	8.8	103.6	100.6
OK	2.2	2.0	2.5	1.8	2.1	27.7	26.1
OR	2.7	2.5	2.7	2.3	2.1	25.8	20.6
PA	76.6	72.6	78.8	73.1	72.0	858.5	840.8
SC	14.4	13.3	13.6	13.1	11.3	154.3	
SD							
TN	1.2	1.3	1.5	1.4	1.4	15.3	14.9
TX	624.2	545.8	540.2	527.7	469.0	6,484.8	6,238.2
UT	58.9	54.0	57.2	56.4	40.9	634.4	594.9
VA	0.5	1.1	1.2	1.3	0.8	11.4	10.8
WA	79.8	81.2	88.3	88.1	83.5	937.9	786.1
WV	0.5	0.7	1.4	1.0	1.1	8.1	9.2
WI	141.8	130.1	143.8	151.4	150.4	1,582.5	1,439.1
WY	0.8	0.5	0.3	0.6	0.6	7.0	7.6
US ⁴	3,134.4	2,766.6	2,858.1	2,842.4	2,612.5	33,698.3	32,387.7
PR	4.2	3.7	4.0	3.7	2.8	43.2	42.7

¹ Includes slaughter in federally inspected and in other slaughter plants, but excludes animals slaughtered on farms.

² US totals and yearly totals are based on unrounded data and may not equal sum of parts.

³ N ENG includes CT, ME, MA, NH, RI, and VT.

⁴ States with no data printed are still included in US total. Data not printed to avoid disclosing individual operations. Puerto Rico is not included in US totals.

**Commercial Cattle Slaughter: Total Live Weight by Month,
State, and United States, 2006 and 2005 Total^{1 2}**

State	Jan	Feb	Mar	Apr	May	Jun	Jul
	<i>1,000 Pounds</i>	<i>1,000 Pounds</i>	<i>1,000 Pounds</i>	<i>1,000 Pounds</i>	<i>1,000 Pounds</i>	<i>1,000 Pounds</i>	<i>1,000 Pounds</i>
AL	287	368	683	461	437	289	297
AK	76	58	69		75		
AZ							
AR	758	850	1,219	980	959	881	758
CA	159,729	141,792	174,384	147,403	165,340	183,565	167,193
CO	224,988	207,256	224,069	212,789	259,048	272,421	254,175
DE-MD	4,653	4,182	5,134	4,189	5,071	4,922	4,110
FL							
GA	18,622	16,252	18,489	18,056	19,933	18,834	19,304
HI	814	812	1,032	829	1,012	956	982
ID							
IL							
IN	3,560	3,030	3,131	2,583	3,113	2,860	3,122
IA							
KS	730,665	639,671	818,613	727,104	854,530	898,172	812,100
KY	1,568	1,383	1,384	1,279	1,426	996	926
LA	467	708	799	644	657	687	629
MI	51,439	46,946	55,422	52,464	58,988	65,358	56,959
MN	87,302	73,204	79,912	66,201	78,603	89,107	81,005
MS	85	106	98	101	87	63	77
MO	9,656	7,923	9,200	7,985	8,607	8,426	7,842
MT	1,922	1,894	1,688	1,486	1,594	1,650	1,265
NE	732,246	669,113	731,191	691,894	831,215	881,665	803,011
NV	102	99	118	77	119	71	81
N ENG ³	1,329	1,034	1,120	986	1,211	1,119	915
NJ	2,773	2,388	2,689	2,187	2,860	2,687	2,385
NM	915	850	695	784	814	676	571
NY	3,222	2,512	2,573	2,376	3,076	3,110	2,223
NC	21,440	16,153	19,126	16,640	17,389	18,142	17,422
ND	1,410	1,038	1,263	1,066	1,177	1,302	1,096
OH	10,018	9,041	10,500	8,954	9,369	9,638	8,545
OK	2,868	2,653	3,247	2,878	2,775	2,567	1,958
OR	2,265	1,988	2,182	2,099	2,636	2,640	2,255
PA	85,156	78,580	96,278	80,114	87,657	85,811	82,569
SC	14,375	12,640	15,394	13,852	15,176	15,058	14,081
SD							
TN	1,332	1,080	1,275	979	1,203	1,024	978
TX	599,678	500,772	679,631	594,024	720,845	759,226	669,915
UT	66,982	64,545	72,515	58,204	62,696	73,352	64,737
VA	1,091	1,102	1,106	982	1,133	920	826
WA	99,834	93,590	108,900	98,559	91,718	93,146	80,625
WV	891	513	574	545	442	349	390
WI	170,963	144,548	174,949	155,751	175,624	181,617	159,871
WY	887	736	608	587	695	772	718
US ⁴	3,383,009	3,000,905	3,607,680	3,222,245	3,768,689	3,981,738	3,598,226
PR ⁵	3,691	3,332	3,794	2,892	2,875	2,934	3,181

See footnote(s) at end of table.

--continued

**Commercial Cattle Slaughter: Total Live Weight by Month,
State, and United States, 2006 and 2005 Total ^{1 2} (continued)**

State	Aug	Sep	Oct	Nov	Dec	2006 Total	2005 Total
	<i>1,000 Pounds</i>	<i>1,000 Pounds</i>	<i>1,000 Pounds</i>	<i>1,000 Pounds</i>	<i>1,000 Pounds</i>	<i>1,000 Pounds</i>	<i>1,000 Pounds</i>
AL	266	212	395	287	256	4,237	4,195
AK	90	70	116	166	69	903	967
AZ							
AR	738	843	1,027	719	846	10,578	8,826
CA	174,882	165,024	180,746	174,465	181,716	2,016,239	1,813,221
CO	255,245	200,077	230,534	227,349	185,105	2,753,056	2,655,335
DE-MD	5,403	4,829	5,161	4,782	4,786	57,224	55,201
FL							
GA	23,412	23,307	26,533	26,138	22,510	251,391	203,625
HI	1,112	974	948	798	819	11,090	9,957
ID							482,976
IL							
IN	3,872	3,434	3,877	3,677	3,404	39,663	40,673
IA							
KS	903,074	798,450	776,691	783,281	766,704	9,509,055	9,097,379
KY	908	1,051	1,482	980	1,345	14,728	14,820
LA	720	704	950	876	627	8,467	11,514
MI	63,457	60,308	67,527	60,091	60,350	699,309	599,360
MN	91,106	75,997	89,562	96,213	93,359	1,001,570	901,493
MS	65	69	47	118	62	979	
MO	9,179	8,590	10,029	7,152	9,180	103,770	108,432
MT	1,673	1,354	2,899	2,711	3,052	23,188	23,918
NE	874,608	756,869	800,807	808,180	706,762	9,287,561	9,078,200
NV	111	65	88	93	115	1,139	1,453
N ENG ³	1,219	1,312	1,469	1,320	1,276	14,308	13,804
NJ	2,971	2,792	2,908	2,724	2,854	32,217	32,006
NM	818	866	1,212	1,124	1,022	10,346	11,478
NY	2,739	2,705	3,186	3,146	2,617	33,486	44,064
NC	20,387	19,375	21,832	22,061	19,642	229,610	195,300
ND	1,127	1,049	1,545	810	1,211	14,092	14,011
OH	10,886	10,299	12,118	11,306	10,367	121,040	114,519
OK	2,494	2,204	2,859	2,065	2,316	30,884	28,222
OR	3,158	2,959	3,204	2,679	2,514	30,577	25,368
PA	91,803	88,412	96,380	90,828	90,838	1,054,425	1,026,338
SC	15,802	14,547	15,176	14,342	12,473	172,915	
SD							
TN	1,104	1,112	1,363	1,226	1,280	13,955	13,909
TX	757,475	663,373	658,530	642,712	570,510	7,816,688	7,482,947
UT	75,707	70,098	74,228	73,809	53,163	810,036	722,972
VA	513	1,105	1,088	1,340	855	12,061	10,960
WA	106,366	109,347	117,435	116,838	111,029	1,227,387	1,003,322
WV	575	684	1,425	1,061	1,127	8,574	8,855
WI	187,275	172,099	191,280	201,669	201,498	2,117,144	1,948,154
WY	948	600	397	656	731	8,335	9,082
US ⁴	3,985,807	3,542,417	3,676,944	3,666,824	3,385,204	42,819,688	40,688,693
PR ⁵	3,936	3,514	3,844	3,498	2,638	40,127	

¹ Includes slaughter in federally inspected and in other slaughter plants, but excludes animals slaughtered on farms.

² US totals and yearly totals are based on unrounded data and may not equal sum of parts.

³ N ENG includes CT, ME, MA, NH, RI, and VT.

⁴ States with no data printed are still included in US total. Data not printed to avoid disclosing individual operations. Puerto Rico is not included in US totals.

⁵ The 2005 weight data for Puerto Rico is not available.

**Commercial Cattle Slaughter: Average Live Weight by Month,
State, and United States, 2006 and 2005 Average^{1 2}**

State	Jan	Feb	Mar	Apr	May	Jun	Jul
	<i>Pounds</i>	<i>Pounds</i>	<i>Pounds</i>	<i>Pounds</i>	<i>Pounds</i>	<i>Pounds</i>	<i>Pounds</i>
AL	856	921	1,038	929	899	851	885
AK	1,169	1,057	1,162		1,150		
AZ							
AR	967	948	1,009	1,003	953	1,011	946
CA	1,362	1,372	1,369	1,352	1,349	1,353	1,322
CO	1,333	1,320	1,295	1,247	1,252	1,277	1,302
DE-MD	1,323	1,332	1,334	1,344	1,322	1,314	1,306
FL							
GA	1,000	983	950	935	933	916	919
HI	1,019	1,065	1,084	1,070	1,027	1,036	1,069
ID							
IL							
IN	1,042	1,051	1,044	1,034	1,042	1,044	1,043
IA							
KS	1,270	1,260	1,236	1,205	1,221	1,253	1,268
KY	934	933	934	953	963	944	961
LA	792	863	883	874	784	768	777
MI	1,377	1,396	1,378	1,366	1,369	1,384	1,372
MN	1,391	1,424	1,437	1,404	1,376	1,380	1,385
MS	893	905	869	919	835	770	882
MO	1,204	1,223	1,223	1,221	1,207	1,213	1,231
MT	1,215	1,250	1,245	1,199	1,160	1,144	1,235
NE	1,319	1,321	1,313	1,263	1,274	1,299	1,311
NV	1,174	1,303	1,146	1,026	1,075	1,083	1,048
N ENG ³	1,037	1,060	1,118	1,085	1,085	1,121	1,112
NJ	1,219	1,224	1,204	1,172	1,179	1,245	1,230
NM	1,017	998	938	961	1,012	992	980
NY	1,137	1,166	1,104	1,119	1,108	1,106	1,121
NC	1,215	1,236	1,205	1,176	1,180	1,184	1,164
ND	1,219	1,204	1,237	1,207	1,195	1,185	1,201
OH	1,175	1,186	1,176	1,193	1,169	1,176	1,166
OK	1,049	1,137	1,145	1,160	1,088	1,100	1,060
OR	1,274	1,272	1,153	1,182	1,250	1,217	1,203
PA	1,262	1,255	1,259	1,241	1,228	1,222	1,208
SC	1,138	1,130	1,163	1,149	1,179	1,138	1,105
SD							
TN	919	956	934	923	954	948	942
TX	1,212	1,206	1,201	1,185	1,186	1,202	1,216
UT	1,307	1,281	1,266	1,239	1,228	1,258	1,268
VA	1,114	1,128	1,057	1,061	1,059	1,077	1,108
WA	1,317	1,304	1,303	1,279	1,266	1,290	1,305
WV	1,038	1,049	1,078	1,087	1,109	1,125	1,207
WI	1,373	1,379	1,361	1,351	1,358	1,352	1,350
WY	1,183	1,191	1,190	1,167	1,198	1,204	1,184
US ⁴	1,285	1,284	1,269	1,240	1,244	1,264	1,273
PR ⁵	944	891	899	905	915	927	960

See footnote(s) at end of table.

--continued

**Commercial Cattle Slaughter: Average Live Weight by Month,
State, and United States, 2006 and 2005 Average^{1 2} (continued)**

State	Aug	Sep	Oct	Nov	Dec	2006 Average	2005 Average
	<i>Pounds</i>	<i>Pounds</i>	<i>Pounds</i>	<i>Pounds</i>	<i>Pounds</i>	<i>Pounds</i>	<i>Pounds</i>
AL	856	877	838	877	848	901	884
AK	1,129	1,213	1,093	1,124	1,082	1,125	1,135
AZ							
AR	975	998	969	1,009	992	982	933
CA	1,307	1,318	1,333	1,330	1,345	1,342	1,331
CO	1,309	1,320	1,332	1,328	1,331	1,302	1,272
DE-MD	1,319	1,324	1,309	1,319	1,325	1,322	1,304
FL							
GA	923	920	915	935	919	935	855
HI	1,106	1,064	1,063	1,067	1,041	1,060	1,083
ID							1,284
IL							
IN	1,055	1,051	1,053	1,056	1,059	1,048	1,045
IA							
KS	1,271	1,280	1,287	1,291	1,298	1,261	1,243
KY	955	973	940	883	948	943	904
LA	786	789	847	864	866	825	884
MI	1,370	1,368	1,364	1,365	1,376	1,373	1,358
MN	1,395	1,392	1,377	1,381	1,389	1,393	1,400
MS	740	814	564	794	723	816	
MO	1,225	1,204	1,207	1,228	1,221	1,217	1,307
MT	1,265	1,210	1,160	1,145	1,205	1,197	1,157
NE	1,317	1,335	1,345	1,348	1,355	1,316	1,292
NV	1,132	1,058	1,039	1,024	1,024	1,093	1,222
N ENG ³	1,105	1,039	1,013	1,002	1,027	1,061	1,011
NJ	1,262	1,231	1,226	1,202	1,235	1,219	1,230
NM	973	942	959	981	979	977	994
NY	1,143	1,131	1,114	1,117	1,124	1,124	1,176
NC	1,168	1,165	1,164	1,186	1,170	1,184	1,017
ND	1,222	1,157	1,171	1,155	1,179	1,195	1,176
OH	1,179	1,178	1,175	1,188	1,195	1,180	1,138
OK	1,138	1,127	1,138	1,120	1,119	1,115	1,080
OR	1,224	1,221	1,223	1,186	1,215	1,218	1,229
PA	1,209	1,228	1,232	1,251	1,269	1,238	1,221
SC	1,104	1,101	1,126	1,106	1,106	1,129	
SD							
TN	951	884	907	897	909	925	935
TX	1,217	1,219	1,223	1,222	1,220	1,209	1,200
UT	1,288	1,301	1,299	1,311	1,302	1,279	1,215
VA	1,043	1,043	941	1,045	1,061	1,059	1,013
WA	1,340	1,354	1,336	1,332	1,334	1,315	1,276
WV	1,116	978	1,031	1,082	1,060	1,065	966
WI	1,334	1,337	1,346	1,348	1,353	1,353	1,354
WY	1,230	1,182	1,224	1,139	1,157	1,187	1,189
US ⁴	1,276	1,285	1,291	1,295	1,300	1,275	1,256
PR ⁵	935	967	965	943	962	934	

¹ Includes slaughter in federally inspected and in other slaughter plants, but excludes animals slaughtered on farms.

² Averages are based on unrounded data.

³ N ENG includes CT, ME, MA, NH, RI, and VT.

⁴ States with no data printed are still included in US total. Data not printed to avoid disclosing individual operations. Puerto Rico is not included in US totals.

⁵ The 2005 weight data for Puerto Rico is not available.

**Commercial Calf Slaughter: Number of Head by Month,
State, and United States, 2006 and 2005 Total^{1 2}**

State	Jan	Feb	Mar	Apr	May	Jun	Jul
	<i>1,000 Head</i>	<i>1,000 Head</i>	<i>1,000 Head</i>	<i>1,000 Head</i>	<i>1,000 Head</i>	<i>1,000 Head</i>	<i>1,000 Head</i>
AL							
AK							
AZ							
AR							
CA	6.3	6.7	7.1	6.0	7.0	8.2	9.7
CO							
DE-MD	0.1	0.1	0.2	0.2	0.2	0.2	0.1
FL							
GA	0.1	0.1	0.1	0.1	0.1	0.1	0.1
HI							
ID							
IL	4.2	3.0	3.6	3.3	4.2	3.8	3.8
IN	0.2	0.2	0.2	0.1	0.1	0.3	0.2
IA							
KS							
KY							
LA	0.3	0.3	0.3	0.3	0.2	0.2	0.2
MI	1.9	2.5	3.0	3.3	4.1	3.2	2.1
MN							
MS							
MO							
MT							
NE							
NV							
N ENG ³	0.3	0.3	0.3	0.3	0.4	0.3	0.2
NJ	6.7	6.5	7.4	6.0	7.1	6.6	6.2
NM							
NY	8.8	7.4	8.5	5.2	6.0	7.8	9.6
NC						0.1	0.1
ND							
OH	0.8	0.1	0.1				0.1
OK	0.1		0.1	0.1	0.1		
OR							
PA	13.4	14.0	15.3	12.1	14.5	15.0	13.7
SC							
SD							
TN	0.1	0.1	0.1	0.1	0.1	0.1	0.1
TX	0.8	0.7	0.7	0.6	0.9	0.8	0.9
UT							
VA			0.1		0.1	0.1	
WA							
WV							
WI	10.3	9.9	11.1	9.1	11.1	11.4	10.0
WY							
US ⁴	55.5	52.7	59.1	47.7	56.9	58.6	57.9
PR	0.9	0.9	0.7	0.7	0.8	0.7	0.6

See footnote(s) at end of table.

--continued

**Commercial Calf Slaughter: Number of Head by Month,
State, and United States, 2006 and 2005 Total ^{1 2} (continued)**

State	Aug	Sep	Oct	Nov	Dec	2006 Total	2005 Total
	<i>1,000 Head</i>	<i>1,000 Head</i>	<i>1,000 Head</i>	<i>1,000 Head</i>	<i>1,000 Head</i>	<i>1,000 Head</i>	<i>1,000 Head</i>
AL							
AK							
AZ							
AR							0.4
CA	8.8	7.2	7.9	8.9	10.1	93.9	85.7
CO							
DE-MD	0.2	0.2	0.2	0.2	0.2	2.0	1.4
FL							
GA	0.1	0.1	0.1	0.1	0.1	1.3	1.8
HI							
ID							
IL	3.9	3.6	4.0	3.3	3.6	44.3	72.9
IN	0.2	0.1	0.3	0.5	0.5	2.9	4.0
IA							
KS							
KY							
LA	0.3	0.3	0.3	0.3	0.3	3.4	5.8
MI	2.6	3.0	3.1	1.8	2.4	33.0	23.7
MN							
MS							
MO						0.4	
MT							
NE							
NV							
N ENG ³	0.3	0.3	0.3	0.3	0.3	3.5	5.3
NJ	7.5	6.6	8.3	8.6	8.7	86.2	76.8
NM							
NY	12.7	8.6	10.1	13.1	13.2	111.1	107.8
NC	0.1	0.1	0.1	0.1	0.1	0.8	0.8
ND							
OH	0.1	0.1	0.1		0.1	1.4	48.8
OK		0.1	0.1		0.1	0.7	1.0
OR						0.1	
PA	16.6	14.8	16.0	16.5	16.3	178.1	153.1
SC							
SD							
TN	0.1	0.1	0.1	0.1	0.1	1.2	1.3
TX	0.7	0.8	0.9	1.5	0.8	10.1	10.4
UT						0.1	
VA	0.1	0.1	0.1	0.1	0.1	0.7	
WA							
WV							
WI	11.6	10.6	10.6	10.6	10.6	126.9	122.0
WY							
US ⁴	66.7	57.6	63.6	66.6	68.4	711.3	734.4
PR	1.0	1.2	1.1	1.0	0.6	10.3	9.2

¹ Includes slaughter in federally inspected and in other slaughter plants, but excludes animals slaughtered on farms.

² US totals and yearly totals are based on unrounded data and may not equal sum of parts.

³ N ENG includes CT, ME, MA, NH, RI, and VT.

⁴ States with no data printed are still included in US total. Data not printed to avoid disclosing individual operations. Puerto Rico is not included in US totals.

**Commercial Calf Slaughter: Total Live Weight by Month,
State, and United States, 2006 and 2005 Total^{1 2}**

State	Jan	Feb	Mar	Apr	May	Jun	Jul
	<i>1,000 Pounds</i>	<i>1,000 Pounds</i>	<i>1,000 Pounds</i>	<i>1,000 Pounds</i>	<i>1,000 Pounds</i>	<i>1,000 Pounds</i>	<i>1,000 Pounds</i>
AL							
AK							
AZ							
AR							
CA	1,089	1,011	1,167	932	1,096	1,244	1,204
CO							
DE-MD	35	36	51	52	64	60	44
FL							
GA	51	45	58	48	47	49	46
HI							
ID							
IL	1,823	1,283	1,519	1,364	1,779	1,605	1,631
IN	27	27	30	10	9	32	29
IA							
KS							
KY							
LA	166	140	160	167	121	84	115
MI	769	1,046	1,230	1,396	1,719	1,383	879
MN							
MS							
MO							
MT							
NE							
NV							
N ENG ³	42	59	46	46	58	41	37
NJ	2,880	2,783	3,188	2,593	3,031	2,863	2,647
NM							
NY	1,712	1,675	1,610	878	1,160	1,250	1,616
NC						26	33
ND							
OH	356	20	20				26
OK	30		40	32	26		
OR							
PA	5,366	5,665	6,323	5,023	6,224	6,173	5,195
SC							
SD							
TN	46	34	42	41	43	40	41
TX	472	399	413	380	499	437	516
UT							
VA			28		16	19	
WA							
WV							
WI	4,502	4,312	4,960	4,002	4,982	5,097	4,456
WY							
US ⁴	19,551	18,693	21,078	17,156	21,051	20,540	18,674
PR ⁵	84	85	82	74	73	82	71

See footnote(s) at end of table.

--continued

**Commercial Calf Slaughter: Total Live Weight by Month,
State, and United States, 2006 and 2005 Total^{1 2} (continued)**

State	Aug	Sep	Oct	Nov	Dec	2006 Total	2005 Total
	<i>1,000 Pounds</i>	<i>1,000 Pounds</i>	<i>1,000 Pounds</i>	<i>1,000 Pounds</i>	<i>1,000 Pounds</i>	<i>1,000 Pounds</i>	<i>1,000 Pounds</i>
AL							
AK							
AZ							
AR							220
CA	1,242	1,131	1,175	1,291	1,402	13,983	13,225
CO							
DE-MD	60	65	70	63	63	663	429
FL							
GA	44	60	53	40	38	579	852
HI							
ID							
IL	1,690	1,608	1,767	1,442	1,574	19,086	32,086
IN	30	16	36	59	58	363	508
IA							
KS							
KY							
LA	127	140	165	146	151	1,681	2,851
MI	1,092	1,306	1,334	749	1,066	13,969	9,663
MN							
MS							
MO						134	
MT							
NE							
NV							
N ENG ³	57	66	66	58	55	631	895
NJ	3,254	2,889	3,652	3,765	3,888	37,433	33,230
NM							
NY	1,633	1,226	1,504	1,772	1,892	17,929	16,687
NC	57	47	46	34	49	383	392
ND							
OH	24	19	31		19	574	19,526
OK		25	27		32	306	432
OR						30	
PA	6,235	5,881	6,413	6,205	6,178	70,882	62,753
SC							
SD							
TN	43	80	60	69	44	583	693
TX	447	458	563	920	465	5,969	5,802
UT						22	
VA	17	21	23	23	22	225	
WA							
WV							
WI	5,109	4,871	4,753	4,813	4,786	56,643	56,205
WY							
US ⁴	21,325	20,075	21,900	21,623	21,944	243,608	259,371
PR ⁵	93	108	100	82	62	995	

¹ Includes slaughter in federally inspected and in other slaughter plants, but excludes animals slaughtered on farms.

² US totals and yearly totals are based on unrounded data and may not equal sum of parts.

³ N ENG includes CT, ME, MA, NH, RI, and VT.

⁴ States with no data printed are still included in US total. Data not printed to avoid disclosing individual operations. Puerto Rico is not included in US totals.

⁵ The 2005 weight data for Puerto Rico is not available.

**Commercial Calf Slaughter: Average Live Weight by Month,
State, and United States, 2006 and 2005 Average ^{1 2}**

State	Jan	Feb	Mar	Apr	May	Jun	Jul
	<i>Pounds</i>	<i>Pounds</i>	<i>Pounds</i>	<i>Pounds</i>	<i>Pounds</i>	<i>Pounds</i>	<i>Pounds</i>
AL							
AK							
AZ							
AR							
CA	173	151	166	155	157	153	124
CO							
DE-MD	319	331	325	321	325	336	300
FL							
GA	451	434	459	429	443	433	467
HI							
ID							
IL	433	426	424	410	426	425	434
IN	126	126	125	125	135	126	135
IA							
KS							
KY							
LA	493	510	497	531	498	458	494
MI	409	420	406	422	425	435	418
MN							
MS							
MO							
MT							
NE							
NV							
N ENG ³	160	196	172	177	148	142	164
NJ	429	431	432	430	430	435	429
NM							
NY	199	230	194	172	200	166	174
NC						461	496
ND							
OH	433	350	350				352
OK	462		438	467	390		
OR							
PA	400	406	414	416	429	413	381
SC							
SD							
TN	616	584	515	545	484	453	414
TX	567	583	594	594	587	570	578
UT							
VA			379		296	323	
WA							
WV							
WI	441	438	449	443	452	447	447
WY							
US ⁴	355	357	359	361	372	353	325
PR ⁵	94	100	111	107	95	111	115

See footnote(s) at end of table.

--continued

**Commercial Calf Slaughter: Average Live Weight by Month,
State, and United States, 2006 and 2005 Average ^{1 2} (continued)**

State	Aug	Sep	Oct	Nov	Dec	2006 Average	2005 Average
	<i>Pounds</i>	<i>Pounds</i>	<i>Pounds</i>	<i>Pounds</i>	<i>Pounds</i>	<i>Pounds</i>	<i>Pounds</i>
AL							
AK							
AZ							
AR							512
CA	142	158	149	145	140	150	154
CO							
DE-MD	302	318	333	336	344	325	296
FL							
GA	410	441	422	425	451	439	469
HI							
ID							
IL	438	441	438	440	439	431	440
IN	126	126	129	125	128	127	128
IA							
KS							
KY							
LA	492	485	497	492	505	497	490
MI	422	430	431	428	442	424	407
MN							
MS							
MO						347	
MT							
NE							
NV							
N ENG ³	203	229	203	191	214	183	168
NJ	437	435	441	439	446	435	433
NM							
NY	133	147	153	138	148	166	155
NC	488	531	443	438	496	479	473
ND							
OH	351	350	351		354	397	400
OK		422	496		461	440	438
OR						382	
PA	375	399	402	377	380	399	410
SC							
SD							
TN	417	569	502	517	414	499	524
TX	656	607	609	641	578	599	556
UT						306	
VA	327	333	316	344	352	340	
WA							
WV							
WI	443	460	451	457	454	449	461
WY							
US ⁴	322	351	347	327	324	345	353
PR ⁵	94	90	89	86	102	98	

¹ Includes slaughter in federally inspected and in other slaughter plants, but excludes animals slaughtered on farms.

² Averages are based on unrounded data.

³ N ENG includes CT, ME, MA, NH, RI, and VT.

⁴ States with no data printed are still included in US total. Data not printed to avoid disclosing individual operations. Puerto Rico is not included in US totals.

⁵ The 2005 weight data for Puerto Rico is not available.

**Commercial Hog Slaughter: Number of Head by Month,
State, and United States, 2006 and 2005 Total^{1 2}**

State	Jan	Feb	Mar	Apr	May	Jun	Jul
	<i>1,000 Head</i>	<i>1,000 Head</i>	<i>1,000 Head</i>	<i>1,000 Head</i>	<i>1,000 Head</i>	<i>1,000 Head</i>	<i>1,000 Head</i>
AL	9.7	9.1	9.8	9.1	9.5	8.8	8.2
AK	0.1	0.1		0.1	0.1	0.1	0.1
AZ	0.3	0.2	0.3	0.9	0.3	0.2	0.2
AR	12.9	11.5	13.6	11.1	11.1	14.1	10.4
CA	217.2	190.2	231.3	201.3	220.5	221.8	203.1
CO	1.0	0.9	1.0	0.9	1.0	0.9	1.0
DE-MD	1.9	1.5	1.3	0.9	1.4	1.5	1.4
FL	5.1	5.8	7.5	7.3	7.3	7.2	7.8
GA	10.5	8.8	10.7	9.6	11.1	10.9	9.7
HI	1.8	1.7	1.8	1.7	2.0	2.2	1.9
ID	12.7	12.4	13.8	11.9	13.0	12.3	11.5
IL	800.8	733.6	855.1	736.4	757.9	762.1	703.1
IN	620.8	559.7	664.1	575.2	606.9	571.8	554.2
IA	2,607.9	2,322.2	2,626.7	2,278.5	2,399.0	2,315.8	2,197.0
KS							
KY	218.4	179.0	214.2	179.8	195.4	193.5	195.0
LA	1.4	1.7	2.0	1.5	1.5	1.3	1.1
MI	9.8	9.1	9.6	8.8	9.9	11.2	10.4
MN	806.7	711.3	837.6	698.2	783.6	774.6	729.2
MS							
MO							
MT	1.1	1.1	1.1	1.0	1.0	1.1	1.3
NE	613.0	555.9	611.2	549.3	595.8	561.4	542.0
NV							
N ENG ³	1.3	1.2	1.1	1.3	1.5	1.9	1.5
NJ	10.7	6.3	8.6	7.2	8.9	9.1	7.9
NM	0.1	0.1	0.1	0.1	0.2	0.1	0.1
NY	2.2	1.5	3.1	3.6	3.9	4.0	2.8
NC	987.8	879.3	1,010.0	840.1	951.4	940.4	864.6
ND	13.8	12.8	14.9	12.9	14.1	12.6	10.6
OH	94.2	83.4	99.0	82.6	93.7	95.5	87.2
OK	410.2	373.3	434.3	405.0	400.6	404.1	377.9
OR	17.6	15.9	16.9	14.8	16.8	17.5	16.4
PA	245.8	229.3	265.0	218.6	244.7	249.4	228.4
SC							
SD	420.7	396.7	377.0	324.9	351.8	314.6	325.0
TN	57.1	45.8	54.2	37.9	47.1	47.8	45.7
TX	32.2	28.6	34.0	25.2	30.8	29.3	27.1
UT	3.3	2.4	3.3	2.4	4.2	4.1	2.8
VA	182.6	170.5	202.7	164.6	160.1	148.4	156.2
WA	2.1	1.6	1.9	1.9	2.2	2.3	2.2
WV	0.5	0.5	0.4	0.4	0.4	0.4	0.5
WI	39.0	36.6	46.0	39.6	49.6	51.6	45.4
WY	0.3	0.3	0.4	0.3	0.3	0.3	0.3
US ⁴	8,916.2	8,055.6	9,235.8	7,959.3	8,536.5	8,343.1	7,882.0
PR	3.0	3.7	4.1	3.7	4.6	4.0	5.2

See footnote(s) at end of table.

--continued

**Commercial Hog Slaughter: Number of Head by Month,
State, and United States, 2006 and 2005 Total ^{1 2} (continued)**

State	Aug	Sep	Oct	Nov	Dec	2006 Total	2005 Total
	<i>1,000 Head</i>	<i>1,000 Head</i>	<i>1,000 Head</i>	<i>1,000 Head</i>	<i>1,000 Head</i>	<i>1,000 Head</i>	<i>1,000 Head</i>
AL	9.8	8.5	8.9	8.2	7.3	107.0	107.3
AK	0.2	0.1	0.1	0.1	0.1	1.1	1.1
AZ	0.2	0.3	0.2	0.2	0.3	3.5	4.0
AR	13.6	13.0	14.6	16.1	17.1	159.2	163.2
CA	232.2	205.4	223.0	216.2	219.7	2,582.0	2,580.2
CO	2.0	1.2	1.1	0.8	0.7	12.4	13.4
DE-MD	2.0	1.5	1.7	1.9	1.7	18.7	18.7
FL	8.3	7.8	8.8	10.0	13.0	95.9	95.5
GA	11.6	10.9	13.5	12.4	14.2	133.8	121.3
HI	2.0	1.8	1.8	1.8	2.2	22.5	23.5
ID	12.9	11.8	13.9	13.2	13.2	152.8	154.8
IL	822.1	795.0	893.0	853.5	778.4	9,491.0	9,433.6
IN	658.7	603.5	681.7	672.9	615.7	7,385.2	7,075.0
IA	2,532.2	2,496.4	2,725.0	2,638.6	2,510.5	29,649.9	29,832.3
KS							
KY	222.1	212.1	221.7	225.9	209.8	2,466.8	2,315.6
LA	1.2	1.2	1.6	2.0	2.2	18.6	21.0
MI	12.8	10.4	10.2	10.3	10.0	122.4	122.8
MN	811.6	797.8	858.8	812.3	756.7	9,378.3	9,245.8
MS							
MO							
MT	1.4	1.1	1.7	1.6	1.7	15.2	14.9
NE	612.0	624.5	699.8	649.9	601.4	7,216.1	7,185.8
NV							
N ENG ³	2.2	2.0	2.2	2.0	2.0	20.1	20.6
NJ	9.8	8.6	9.1	9.6	11.6	107.4	114.1
NM	0.3	0.3	0.2	0.1	0.1	1.8	2.0
NY	3.6	2.9	2.9	2.5	2.7	35.9	32.6
NC	1,001.6	945.3	1,004.6	957.4	935.5	11,318.0	11,161.0
ND	12.5	11.3	12.7	12.7	11.4	152.2	163.9
OH	100.1	93.1	100.6	91.5	93.9	1,114.9	1,108.9
OK	433.1	418.5	440.6	426.4	378.7	4,902.8	4,973.4
OR	19.2	15.3	17.6	16.9	15.7	200.6	195.9
PA	253.1	242.2	264.9	248.8	269.7	2,959.9	2,841.1
SC							
SD	347.6	362.1	384.2	389.9	363.5	4,358.1	4,771.8
TN	55.9	60.5	66.7	62.8	55.5	637.1	644.4
TX	33.3	33.6	30.5	39.2	34.5	378.5	394.9
UT	5.5	4.5	4.4	4.9	5.3	47.1	46.0
VA	171.0	177.4	166.7	189.3	175.7	2,065.3	3,368.6
WA	2.4	2.2	2.1	2.0	2.0	24.8	23.5
WV	1.0	0.9	0.9	0.6	0.6	7.2	7.7
WI	52.2	43.9	46.1	44.3	42.4	536.6	513.2
WY	1.3	0.5	0.2	0.3	0.4	4.9	5.3
US ⁴	9,095.7	8,832.7	9,632.0	9,364.9	8,882.8	104,736.6	103,581.5
PR	4.7	5.1	6.0	6.1	9.6	59.8	67.2

¹ Includes slaughter in federally inspected and in other slaughter plants, but excludes animals slaughtered on farms.

² US totals and yearly totals are based on unrounded data and may not equal sum of parts.

³ N ENG includes CT, ME, MA, NH, RI, and VT.

⁴ States with no data printed are still included in US total. Data not printed to avoid disclosing individual operations. Puerto Rico is not included in US totals.

**Commercial Hog Slaughter: Total Live Weight by Month,
State, and United States, 2006 and 2005 Total^{1 2}**

State	Jan	Feb	Mar	Apr	May	Jun	Jul
	<i>1,000 Pounds</i>	<i>1,000 Pounds</i>	<i>1,000 Pounds</i>	<i>1,000 Pounds</i>	<i>1,000 Pounds</i>	<i>1,000 Pounds</i>	<i>1,000 Pounds</i>
AL	4,476	4,215	4,514	4,212	4,403	4,088	3,658
AK	14	29		26	19	13	18
AZ	49	29	71	206	65	35	26
AR	6,127	5,554	6,369	5,185	5,024	6,399	4,757
CA	50,441	45,774	56,620	48,813	53,921	52,804	47,081
CO	274	253	272	233	265	225	239
DE-MD	494	397	341	218	292	310	295
FL	674	804	1,033	970	1,030	971	1,004
GA	2,490	2,081	2,456	2,202	2,607	2,482	2,201
HI	406	368	401	392	444	490	430
ID	3,238	3,174	3,566	3,074	3,345	3,097	2,841
IL	225,696	205,977	241,647	208,428	213,679	212,117	193,392
IN	167,585	149,220	176,637	153,248	160,030	148,555	142,433
IA	717,137	635,889	716,960	623,517	652,783	621,125	580,585
KS							
KY	59,168	48,504	57,393	47,704	51,570	50,695	50,868
LA	286	358	417	287	299	247	204
MI	3,690	3,456	3,688	3,321	3,652	3,972	3,568
MN	212,145	186,203	219,853	182,711	204,183	199,700	187,332
MS							
MO							
MT	279	270	270	253	245	264	307
NE	167,195	150,718	165,548	149,115	161,174	149,762	142,893
NV							
N ENG ³	281	249	244	263	296	340	278
NJ	1,060	662	868	718	898	925	763
NM	33	26	23	38	42	22	21
NY	403	293	480	520	652	687	529
NC	258,663	226,719	262,364	219,237	245,972	238,554	214,639
ND	3,403	3,192	3,725	3,215	3,452	3,100	2,597
OH	25,796	22,931	26,915	22,638	25,741	25,889	23,509
OK	118,201	105,812	122,238	114,044	113,279	111,383	103,257
OR	3,808	3,589	4,048	3,555	3,944	3,955	3,719
PA	60,815	56,763	65,562	53,808	59,925	61,538	56,630
SC							
SD	110,752	104,212	98,876	85,280	92,219	81,285	83,154
TN	27,540	22,268	26,771	18,357	22,847	23,226	22,040
TX	7,720	7,161	8,237	6,390	8,013	7,537	7,840
UT	769	539	778	544	966	882	495
VA	47,459	44,501	52,988	42,673	41,972	38,553	39,866
WA	376	303	402	408	451	433	418
WV	143	147	122	100	102	89	116
WI	17,306	16,271	20,478	17,733	22,457	23,319	19,984
WY	93	89	109	73	78	71	75
US ⁴	2,427,013	2,183,590	2,504,377	2,160,169	2,306,430	2,223,316	2,074,519
PR ⁵	453	532	576	538	650	572	860

See footnote(s) at end of table.

--continued

**Commercial Hog Slaughter: Total Live Weight by Month,
State, and United States, 2006 and 2005 Total^{1 2} (continued)**

State	Aug	Sep	Oct	Nov	Dec	2006 Total	2005 Total
	<i>1,000 Pounds</i>	<i>1,000 Pounds</i>	<i>1,000 Pounds</i>	<i>1,000 Pounds</i>	<i>1,000 Pounds</i>	<i>1,000 Pounds</i>	<i>1,000 Pounds</i>
AL	4,534	3,962	4,100	3,820	3,342	49,322	50,312
AK	38	24	19	16	16	242	283
AZ	28	71	43	38	44	705	710
AR	6,255	5,912	6,652	7,352	7,759	73,344	82,884
CA	53,540	48,191	53,065	51,887	51,805	613,941	619,686
CO	480	294	274	206	178	3,193	3,587
DE-MD	443	338	418	487	427	4,459	4,474
FL	1,057	1,016	1,165	1,309	1,610	12,643	12,657
GA	2,539	2,430	3,044	2,785	3,041	30,357	28,735
HI	448	425	429	401	480	5,114	5,045
ID	3,111	2,941	3,528	3,351	3,385	38,651	50,657
IL	222,936	219,231	249,090	239,219	217,292	2,648,704	2,611,010
IN	168,350	157,699	180,936	179,313	163,335	1,947,341	1,873,037
IA	666,853	668,204	736,627	720,400	683,091	8,023,172	8,078,870
KS							
KY	57,784	55,424	58,833	60,496	55,871	654,310	617,942
LA	242	245	285	323	342	3,535	3,987
MI	4,354	3,816	3,771	4,101	3,731	45,121	44,512
MN	209,409	209,278	226,220	215,004	200,285	2,452,324	2,442,526
MS							
MO							
MT	332	274	411	414	438	3,756	3,728
NE	161,052	166,925	189,719	176,284	162,627	1,943,013	1,933,729
NV							
N ENG ³	402	420	496	432	384	4,085	4,315
NJ	918	914	932	965	1,047	10,670	11,334
NM	74	84	53	25	24	465	608
NY	663	558	584	496	460	6,326	7,218
NC	247,757	235,031	253,105	246,374	242,900	2,891,315	2,847,170
ND	2,995	2,775	3,088	3,123	2,811	37,476	39,052
OH	26,605	25,075	27,066	25,361	25,774	303,301	302,063
OK	116,716	112,802	120,222	119,000	105,539	1,362,493	1,400,142
OR	4,284	3,471	4,096	3,953	3,638	46,061	47,128
PA	62,457	61,789	67,869	63,789	67,346	738,291	695,632
SC							
SD	88,379	93,618	99,587	101,980	96,330	1,135,672	1,247,960
TN	26,639	28,827	31,552	29,861	26,722	306,650	311,039
TX	8,093	8,488	7,445	10,737	8,887	96,548	98,564
UT	1,127	959	896	971	1,089	10,014	10,916
VA	43,106	45,527	43,391	49,080	45,564	534,680	862,743
WA	454	423	460	445	408	4,979	5,973
WV	265	210	238	171	140	1,844	1,953
WI	22,792	18,863	20,004	19,540	18,724	237,471	229,324
WY	338	137	52	92	97	1,306	1,380
US ⁴	2,380,908	2,348,584	2,589,179	2,542,375	2,402,254	28,142,714	27,827,948
PR ⁵	763	803	968	959	1,422	9,095	

¹ Includes slaughter in federally inspected and in other slaughter plants, but excludes animals slaughtered on farms.

² US totals and yearly totals are based on unrounded data and may not equal sum of parts.

³ N ENG includes CT, ME, MA, NH, RI, and VT.

⁴ States with no data printed are still included in US total. Data not printed to avoid disclosing individual operations. Puerto Rico is not included in US totals.

⁵ The 2005 weight data for Puerto Rico is not available.

**Commercial Hog Slaughter: Average Live Weight by Month,
State, and United States, 2006 and 2005 Average^{1 2}**

State	Jan	Feb	Mar	Apr	May	Jun	Jul
	<i>Pounds</i>	<i>Pounds</i>	<i>Pounds</i>	<i>Pounds</i>	<i>Pounds</i>	<i>Pounds</i>	<i>Pounds</i>
AL	464	462	463	463	463	466	449
AK	249	228		232	234	205	297
AZ	172	168	228	229	255	192	156
AR	475	482	467	469	451	456	456
CA	234	241	246	243	246	239	233
CO	271	274	268	266	256	262	247
DE-MD	267	262	261	244	209	202	211
FL	133	140	140	134	142	135	129
GA	238	238	230	230	235	227	226
HI	224	224	226	233	227	226	232
ID	256	256	258	259	258	251	247
IL	282	281	283	283	282	279	275
IN	270	267	266	267	264	260	257
IA	275	274	273	274	272	268	265
KS							
KY	271	271	268	266	264	263	261
LA	212	208	212	190	194	191	190
MI	377	380	387	379	368	355	345
MN	263	262	263	262	261	258	257
MS							
MO							
MT	245	246	246	253	245	249	238
NE	273	271	271	272	271	267	264
NV							
N ENG ³	214	215	212	203	193	183	191
NJ	99	106	101	100	101	102	97
NM	260	234	279	382	250	310	312
NY	180	195	157	147	167	170	190
NC	262	258	260	261	259	254	248
ND	247	249	250	249	245	247	245
OH	274	276	272	274	275	271	270
OK	288	283	281	282	283	276	273
OR	217	227	240	240	236	226	228
PA	248	248	248	247	245	247	248
SC							
SD	263	263	262	263	262	259	256
TN	483	486	494	485	485	486	483
TX	240	250	242	254	260	257	289
UT	235	224	234	223	230	214	176
VA	260	261	262	259	262	260	255
WA	176	186	214	216	207	190	192
WV	272	302	291	237	238	212	215
WI	450	450	451	455	459	457	446
WY	273	260	269	262	269	266	260
US ⁴	273	271	271	272	270	267	263
PR ⁵	152	145	139	144	143	144	165

See footnote(s) at end of table.

--continued

**Commercial Hog Slaughter: Average Live Weight by Month,
State, and United States, 2006 and 2005 Average^{1 2} (continued)**

State	Aug	Sep	Oct	Nov	Dec	2006 Average	2005 Average
	<i>Pounds</i>	<i>Pounds</i>	<i>Pounds</i>	<i>Pounds</i>	<i>Pounds</i>	<i>Pounds</i>	<i>Pounds</i>
AL	463	467	461	468	461	463	469
AK	244	233	235	215	166	230	252
AZ	172	228	177	163	163	202	178
AR	460	455	455	458	455	461	508
CA	231	235	238	240	236	238	240
CO	245	253	260	257	257	259	267
DE-MD	225	224	241	263	251	239	239
FL	128	131	133	132	124	133	133
GA	218	223	225	225	215	227	237
HI	224	233	234	227	221	227	215
ID	242	249	254	254	256	253	327
IL	271	276	279	281	279	279	277
IN	256	261	266	267	265	264	265
IA	264	268	271	273	272	271	271
KS							
KY	261	262	266	268	267	266	267
LA	201	200	180	164	156	190	190
MI	342	367	371	398	374	369	362
MN	258	263	264	265	265	262	264
MS							
MO							
MT	244	245	246	256	256	248	251
NE	263	268	271	272	271	270	269
NV							
N ENG ³	183	213	225	218	192	203	209
NJ	94	107	102	101	90	99	99
NM	255	250	252	238	269	265	300
NY	183	192	198	197	172	177	221
NC	248	249	252	258	260	256	255
ND	240	245	244	247	247	246	238
OH	266	270	269	278	275	272	272
OK	270	270	273	279	279	278	282
OR	225	229	234	235	232	231	241
PA	247	255	257	257	250	250	245
SC							
SD	254	259	259	262	265	261	262
TN	477	477	474	476	482	482	483
TX	243	253	244	274	258	255	250
UT	207	212	206	197	207	213	237
VA	252	257	260	259	260	259	256
WA	192	193	219	217	207	201	254
WV	266	240	269	269	253	257	254
WI	442	437	441	448	450	449	447
WY	261	265	252	270	276	265	259
US ⁴	262	266	269	272	271	269	269
PR ⁵	161	157	162	156	148	152	

¹ Includes slaughter in federally inspected and in other slaughter plants, but excludes animals slaughtered on farms.

² Averages are based on unrounded data.

³ N ENG includes CT, ME, MA, NH, RI, and VT.

⁴ States with no data printed are still included in US total. Data not printed to avoid disclosing individual operations. Puerto Rico is not included in US totals.

⁵ The 2005 weight data for Puerto Rico is not available.

**Commercial Sheep and Lamb Slaughter: Number of Head by Month,
State, and United States, 2006 and 2005 Total^{1 2}**

State	Jan	Feb	Mar	Apr	May	Jun	Jul
	<i>1,000 Head</i>	<i>1,000 Head</i>	<i>1,000 Head</i>	<i>1,000 Head</i>	<i>1,000 Head</i>	<i>1,000 Head</i>	<i>1,000 Head</i>
AL							
AK							
AZ	0.1	0.1	0.1	0.2	0.1	0.1	0.1
AR			0.1				
CA							
CO	82.3	80.0	101.9	91.7	91.2	86.3	81.0
DE-MD	3.2	2.3	2.9	3.1	2.9	2.6	2.5
FL	0.1	0.1	0.2	0.5	0.2	0.5	0.1
GA	0.3	0.2	0.2	0.2	0.5	0.3	0.5
HI							
ID	0.3	0.3	0.2	0.3	0.3	0.3	0.5
IL	17.6	14.2	15.2	20.0	12.3	13.1	10.9
IN	1.6	1.3	1.6	3.2	2.1	2.0	2.4
IA	31.5	32.2	41.5	34.3	25.2	28.0	34.7
KS	0.2	0.2	0.2	0.3	0.2	0.2	0.3
KY	0.9	1.0	0.8	1.0	1.1	1.1	0.9
LA	0.1	0.2	0.2	0.1	0.1	0.1	0.1
MI	14.4	13.1	16.5	14.5	15.1	13.9	13.2
MN	0.2	0.2	0.2	0.2	0.2	0.2	0.2
MS							
MO	0.5	0.4	0.3	0.5	0.6	0.5	0.4
MT	0.2	0.2	0.2	0.2	0.2	0.2	0.2
NE	2.5	3.9	0.5		0.1	0.1	0.1
NV	0.1				0.1		0.1
N ENG ³	1.9	1.7	2.2	4.9	2.6	2.6	2.3
NJ	8.2	6.5	7.8	12.6	10.4	9.8	8.7
NM	0.7	0.7	0.8	0.5	0.7	0.5	0.5
NY	3.6	1.6	2.6	8.6	2.5	2.6	2.5
NC	0.5	0.3	0.4	0.4	0.5	0.5	0.5
ND			0.1			0.1	
OH	1.0	0.5	0.8	1.6	0.9	1.1	1.0
OK		0.1	0.2	0.1	0.1	0.1	
OR	1.6	1.4	1.5	2.1	1.9	1.8	1.7
PA	4.1	3.1	4.2	7.3	4.5	4.8	4.5
SC							
SD	0.9	1.1	1.3	0.9	1.1	1.1	0.8
TN	1.0	0.8	0.9	0.9	1.1	1.0	0.9
TX	12.8	7.9	10.9	4.9	10.0	5.2	1.3
UT	2.7	2.5	2.8	2.7	3.0	2.7	2.4
VA	1.1	0.8	0.9	0.9	0.8	0.9	0.8
WA	0.2	0.1	0.1	0.1	0.2	0.1	0.1
WV							
WI	1.0	0.6	0.7	0.9	0.8	1.0	1.4
WY	0.1	0.1	0.1	0.1	0.1	0.1	0.1
US ⁴	225.2	202.2	249.8	247.1	225.6	211.5	202.4
PR	0.1		0.1	0.1	0.1	0.1	0.1

See footnote(s) at end of table.

--continued

**Commercial Sheep and Lamb Slaughter: Number of Head by Month,
State, and United States, 2006 and 2005 Total ^{1 2} (continued)**

State	Aug	Sep	Oct	Nov	Dec	2006 Total	2005 Total
	<i>1,000 Head</i>	<i>1,000 Head</i>	<i>1,000 Head</i>	<i>1,000 Head</i>	<i>1,000 Head</i>	<i>1,000 Head</i>	<i>1,000 Head</i>
AL							
AK							
AZ	0.1	0.2	0.1	0.1	0.1	1.5	1.4
AR		0.1		0.1		0.5	0.6
CA							
CO	87.1	82.1	93.4	91.4	85.3	1,053.6	1,019.7
DE-MD	3.1	3.2	3.4	3.2	3.2	35.7	35.4
FL	0.2	0.2	0.2	0.2	0.3	2.8	2.4
GA	0.2	0.3	0.4	0.2	0.4	3.8	
HI							
ID	0.7	0.6	0.5	0.3	0.3	4.4	4.0
IL	14.4	13.2	11.3	13.1	14.3	169.8	199.5
IN	2.6	2.4	2.3	2.4	3.0	27.0	24.9
IA	35.0	37.2	40.3	35.0	34.9	409.8	413.8
KS	0.4	0.3	0.3	0.3	0.3	3.2	2.7
KY	1.1	0.8	1.0	0.7	1.0	11.4	13.4
LA	0.1	0.1	0.2	0.1	0.2	1.7	1.7
MI	16.5	14.8	16.1	15.7	16.0	179.7	174.3
MN	0.3	0.3	0.4	0.2	0.4	2.9	2.8
MS							
MO	0.7	0.6	0.5	0.4	0.5	5.9	6.0
MT	0.4	0.5	0.6	0.4	0.4	3.6	3.6
NE	0.1	0.1	0.2		0.1	7.7	2.1
NV	0.1	0.1	0.1	0.1		0.8	1.3
N ENG ³	3.2	2.9	3.2	3.1	2.9	33.5	26.8
NJ	9.4	10.6	11.0	8.9	12.7	116.5	114.5
NM	0.9	0.9	0.9	0.9	0.8	8.9	14.8
NY	3.0	2.9	2.9	3.1	5.0	40.6	38.5
NC	0.5	0.8	0.8	0.6	0.6	6.6	5.7
ND	0.1	0.1	0.1	0.1	0.1	0.6	
OH	1.9	1.4	1.2	1.2	1.3	14.0	10.5
OK	0.1		0.1		0.1	0.7	0.9
OR	2.2	2.0	2.0	1.6	1.9	21.7	19.0
PA	4.6	4.3	4.8	4.2	4.7	55.0	58.6
SC							
SD	1.6	1.2	1.0	1.6	1.6	14.3	10.3
TN	1.3	1.2	1.3	1.1	1.5	12.8	10.6
TX	2.0	2.6	2.6	1.7	1.1	62.9	69.3
UT	3.1	2.6	3.1	2.8	2.7	33.1	30.2
VA	1.0	1.2	1.0	0.9	0.9	11.2	11.0
WA	0.1	0.2	0.3	0.3	0.4	2.1	2.5
WV	0.1	0.1	0.1			0.4	
WI	1.4	1.2	1.6	1.1	1.1	13.0	10.5
WY	0.4	0.2	0.1	0.1	0.1	1.6	1.7
US ⁴	227.1	219.1	237.3	224.2	226.9	2,698.5	2,697.8
PR	0.1			0.1		0.8	1.0

¹ Includes slaughter in federally inspected and in other slaughter plants, but excludes animals slaughtered on farms.

² US totals and yearly totals are based on unrounded data and may not equal sum of parts.

³ N ENG includes CT, ME, MA, NH, RI, and VT.

⁴ States with no data printed are still included in US total. Data not printed to avoid disclosing individual operations. Puerto Rico is not included in US totals.

**Commercial Sheep and Lamb Slaughter: Total Live Weight
by Month, State, and United States, 2006 and 2005 Total^{1 2}**

State	Jan	Feb	Mar	Apr	May	Jun	Jul
	<i>1,000 Pounds</i>	<i>1,000 Pounds</i>	<i>1,000 Pounds</i>	<i>1,000 Pounds</i>	<i>1,000 Pounds</i>	<i>1,000 Pounds</i>	<i>1,000 Pounds</i>
AL							
AK							
AZ	7	18	15	20	12	11	5
AR			8				
CA							
CO	13,037	12,295	16,122	14,679	14,798	13,355	11,625
DE-MD	331	236	308	336	289	265	247
FL	9	5	13	32	11	28	7
GA	35	19	25	26	54	32	40
HI							
ID	40	33	32	33	36	38	59
IL	2,622	2,237	2,248	2,312	1,666	1,747	1,315
IN	174	148	179	324	224	224	264
IA	4,959	4,951	6,469	5,403	3,848	3,920	4,800
KS	26	18	28	31	20	24	35
KY	111	120	104	119	151	138	112
LA	8	28	19	10	11	10	10
MI	1,938	1,817	2,238	1,844	1,932	1,769	1,653
MN	23	20	20	23	25	27	23
MS							
MO	48	39	43	65	72	54	46
MT	20	25	19	18	21	16	20
NE	367	564	74		9	8	16
NV	8				15		10
N ENG ³	182	179	186	315	202	209	196
NJ	734	591	645	971	846	831	723
NM	85	83	101	60	85	67	68
NY	282	131	206	540	202	215	217
NC	46	30	34	38	44	45	50
ND			7				
OH	110	53	80	161	99	119	109
OK		7	20	9	9	6	
OR	215	202	217	306	254	232	218
PA	387	299	413	618	412	434	421
SC							
SD	118	132	173	119	165	131	98
TN	77	60	71	66	81	73	67
TX	1,732	1,102	1,469	550	1,383	522	98
UT	371	362	390	356	444	374	317
VA	111	86	88	97	82	89	88
WA	23	16	7	16	21	8	7
WV							
WI	145	88	101	132	108	137	194
WY	14	15	14	16	11	11	19
US ⁴	32,242	29,162	36,178	33,477	32,055	28,557	26,303
PR ⁵	4		5	4	4	4	4

See footnote(s) at end of table.

--continued

**Commercial Sheep and Lamb Slaughter: Total Live Weight
by Month, State, and United States, 2006 and 2005 Total ^{1 2} (continued)**

State	Aug	Sep	Oct	Nov	Dec	2006 Total	2005 Total
	<i>1,000 Pounds</i>	<i>1,000 Pounds</i>	<i>1,000 Pounds</i>	<i>1,000 Pounds</i>	<i>1,000 Pounds</i>	<i>1,000 Pounds</i>	<i>1,000 Pounds</i>
AL							
AK							
AZ	9	18	12	8	10	145	166
AR		12		9		56	67
CA							
CO	12,223	11,635	13,427	13,922	13,154	160,272	158,289
DE-MD	318	317	349	322	327	3,646	3,622
FL	11	13	11	14	18	172	161
GA	28	34	45	25	37	400	
HI							
ID	92	79	56	38	41	578	489
IL	1,785	1,599	1,358	1,710	1,813	22,411	27,320
IN	279	258	255	263	331	2,923	2,706
IA	4,922	5,310	5,946	5,236	5,262	61,026	61,680
KS	42	38	37	29	32	360	274
KY	146	103	116	91	115	1,426	1,790
LA	10	9	14	12	10	150	157
MI	2,104	1,913	2,084	2,039	2,126	23,459	23,008
MN	35	30	45	28	42	341	354
MS							
MO	86	71	61	53	68	706	522
MT	46	49	50	34	48	366	433
NE	17	18	19		9	1,107	282
NV	16	10	9	8		100	134
N ENG ³	284	255	277	273	241	2,799	2,474
NJ	744	836	877	717	1,021	9,538	9,449
NM	113	117	115	116	98	1,109	1,769
NY	270	249	242	258	397	3,210	3,184
NC	47	63	61	49	50	557	479
ND	10	10	8	6	7	77	
OH	207	150	131	127	136	1,482	1,145
OK			10			90	101
OR	299	270	276	219	252	2,960	2,566
PA	449	413	457	398	444	5,142	5,618
SC							
SD	179	142	110	200	211	1,778	1,277
TN	97	81	92	86	99	949	845
TX	123	260	213	136	107	7,694	8,457
UT	424	359	400	377	369	4,545	4,168
VA	101	118	97	92	86	1,136	1,154
WA	16	28	39	44	44	270	333
WV	9	8	5			42	
WI	186	160	212	143	149	1,755	1,408
WY	51	25	8	16	17	216	229
US ⁴	29,160	28,320	31,139	30,744	30,762	368,098	373,305
PR ⁵	5			3		39	

¹ Includes slaughter in federally inspected and in other slaughter plants, but excludes animals slaughtered on farms.

² US totals and yearly totals are based on unrounded data and may not equal sum of parts.

³ N ENG includes CT, ME, MA, NH, RI, and VT.

⁴ States with no data printed are still included in US total. Data not printed to avoid disclosing individual operations. Puerto Rico is not included in US totals.

⁵ The 2005 weight data for Puerto Rico is not available.

**Commercial Sheep and Lamb Slaughter: Average Live Weight
by Month, State, and United States, 2006 and 2005 Average^{1 2}**

State	Jan	Feb	Mar	Apr	May	Jun	Jul
	<i>Pounds</i>	<i>Pounds</i>	<i>Pounds</i>	<i>Pounds</i>	<i>Pounds</i>	<i>Pounds</i>	<i>Pounds</i>
AL							
AK							
AZ	83	124	108	116	86	100	102
AR			114				
CA							
CO	159	154	158	160	162	155	144
DE-MD	104	103	106	108	100	101	98
FL	79	58	62	60	57	62	64
GA	106	110	128	107	116	114	88
HI							
ID	126	133	134	130	137	133	127
IL	149	157	148	116	135	133	120
IN	107	111	110	101	109	110	109
IA	158	154	157	158	153	140	138
KS	112	102	119	112	108	111	109
KY	118	116	130	124	132	132	132
LA	90	122	106	92	80	83	79
MI	135	140	136	128	128	128	126
MN	128	122	128	117	125	120	118
MS							
MO	105	106	130	126	129	114	114
MT	93	136	101	90	100	88	122
NE	148	146	158		119	95	120
NV	121				129		119
N ENG ³	96	105	85	64	78	81	84
NJ	90	91	83	77	82	85	84
NM	125	114	125	125	127	126	126
NY	79	81	81	63	82	84	88
NC	85	92	91	88	89	82	91
ND			145				
OH	110	108	104	103	105	106	105
OK		120	134	118	132	113	
OR	139	143	145	149	136	128	126
PA	94	97	98	85	92	90	94
SC							
SD	131	120	129	126	153	120	122
TN	78	79	76	78	76	71	72
TX	135	140	135	112	139	100	75
UT	142	147	142	134	147	141	131
VA	101	101	97	105	106	104	107
WA	134	132	137	130	138	123	140
WV							
WI	140	143	142	141	137	141	134
WY	133	129	127	151	146	130	141
US ⁴	143	144	145	136	142	135	130
PR ⁵	47		52	52	56	48	44

See footnote(s) at end of table.

--continued

**Commercial Sheep and Lamb Slaughter: Average Live Weight
by Month, State, and United States, 2006 and 2005 Average^{1 2} (continued)**

State	Aug	Sep	Oct	Nov	Dec	2006 Average	2005 Average
	<i>Pounds</i>	<i>Pounds</i>	<i>Pounds</i>	<i>Pounds</i>	<i>Pounds</i>	<i>Pounds</i>	<i>Pounds</i>
AL							
AK							
AZ	82	102	90	94	94	100	117
AR		108		104		103	109
CA							
CO	140	142	144	152	154	152	155
DE-MD	103	100	101	100	101	102	102
FL	63	66	58	61	68	63	66
GA	117	104	101	106	98	106	
HI							
ID	131	130	123	129	135	130	123
IL	124	121	120	131	127	132	137
IN	108	108	110	111	109	108	109
IA	141	143	148	150	151	149	149
KS	118	109	115	111	117	112	102
KY	134	122	119	125	117	125	133
LA	79	74	82	88	69	89	92
MI	128	129	130	130	133	131	132
MN	118	116	115	113	119	119	126
MS							
MO	125	119	113	124	129	120	87
MT	129	108	81	88	108	102	121
NE	120	129	125		125	145	133
NV	124	128	116	130		126	104
N ENG ³	89	89	87	88	82	84	92
NJ	79	79	80	81	80	82	82
NM	123	125	122	132	128	125	120
NY	91	86	85	84	79	79	83
NC	86	83	79	84	79	85	85
ND	116	123	106	104	124	123	
OH	107	106	107	107	107	106	109
OK			101			121	109
OR	133	134	136	136	135	136	135
PA	97	95	94	96	95	93	96
SC							
SD	111	115	113	126	129	124	124
TN	77	70	73	76	68	74	80
TX	63	101	82	82	97	122	122
UT	138	136	131	133	136	138	138
VA	104	96	97	98	101	101	105
WA	137	137	132	142	104	129	133
WV	113	110	84			101	
WI	130	129	129	133	136	135	134
WY	138	142	133	128	130	136	135
US ⁴	129	129	131	137	136	137	138
PR ⁵	46			53		49	

¹ Includes slaughter in federally inspected and in other slaughter plants, but excludes animals slaughtered on farms.

² Averages are based on unrounded data.

³ N ENG includes CT, ME, MA, NH, RI, and VT.

⁴ States with no data printed are still included in US total. Data not printed to avoid disclosing individual operations. Puerto Rico is not included in US totals.

⁵ The 2005 weight data for Puerto Rico is not available.

**Federally Inspected Plants and Head Slaughtered: Number
by Species, State, and United States, 2006^{1 2}**

State	Cattle		Calves		Hogs	
	Plants	Head	Plants	Head	Plants	Head
	<i>Number</i>	<i>1,000</i>	<i>Number</i>	<i>1,000</i>	<i>Number</i>	<i>1,000</i>
AL					7	98.7
AK					3	1.1
AZ						
AR	8	4.8			8	150.8
CA	24	1,526.8	12	91.3	16	2,498.2
CO	20	2,109.6			16	7.3
DE-MD	19	43.1	12	2.0	15	18.4
FL					14	95.9
GA	9	264.5			13	50.4
HI	9	10.5			6	22.5
ID					9	144.8
IL			9	44.3	25	9,315.1
IN			1	2.8	8	7,338.9
IA					21	29,627.3
KS	20	7,509.6				
KY	18	7.5			20	2,460.0
LA					2	0.7
MI	26	487.4	10	32.1	24	102.1
MN	21	697.1			21	9,355.0
MS						
MO			11	0.3		
MT	8	4.9			8	2.6
NE	32	7,038.0			23	7,201.5
NV						
N ENG ⁴	20	11.1	16	3.3	19	16.4
NJ	11	26.5	12	86.2	7	107.0
NM	2	7.5			2	0.2
NY	39	28.8	30	110.7	33	32.7
NC	16	191.2	7	0.7	24	11,228.7
ND					10	148.0
OH	11	42.8			14	1,034.9
OK	5	0.6			7	4,880.7
OR	13	21.6			12	197.3
PA	81	842.0	36	178.0	77	2,946.0
SC	6	152.3				
SD					5	4,346.8
TN	12	11.5	6	1.1	16	635.5
TX	36	6,461.9	7	8.3	24	334.0
UT	10	625.7			8	27.9
VA	14	2.5	11	0.7	14	2,058.8
WA	11	937.3			7	22.7
WV	4	0.7			4	0.6
WI	9	1,538.5			6	471.8
WY						
US ⁵	636	33,145.0	238	698.7	614	103,688.5
PR	6	43.2	7	10.3	8	59.8

See footnote(s) at end of table.

--continued

**Federally Inspected Plants and Head Slaughtered: Number
by Species, State, and United States, 2006^{1 2} (continued)**

State	Sheep and Lambs		Goats		Bison ³	
	Plants	Head	Plants	Head	Plants	Head
	<i>Number</i>	<i>1,000</i>	<i>Number</i>	<i>Number</i>	<i>Number</i>	<i>Number</i>
AL						
AK			3	57	3	11
AZ	2	0.2	2	60	1	12
AR	6	0.3	6	333		
CA			14	25,084		
CO	16	1,052.9	14	5,932	10	18,857
DE-MD	17	35.7	16	37,995		
FL	6	2.8	8	19,145		
GA	6	1.9	7	31,886		
HI						
ID	8	2.4	5	33	4	1,561
IL	16	152.7	14	36,152	4	50
IN	3	14.8	3	14,691	1	330
IA	5	407.7	2	2,442	1	71
KS			9	2,405		
KY	17	11.3	14	6,062	3	44
LA						
MI	25	176.5	14	3,107	9	199
MN	14	1.8	9	91	9	1,829
MS						
MO	35	5.2	29	3,545	9	278
MT	8	1.3	5	31	8	1,012
NE			8	65	8	2,375
NV	3	0.8				
N ENG ⁴	21	31.6	18	19,623	6	155
NJ	12	116.5	13	216,078		
NM	2	1.4	2	18		
NY	34	28.1	25	38,653		
NC	12	6.4	12	14,444		
ND	6	0.1				
OH	6	0.3	6	61		
OK	5	0.3				
OR	11	20.0	8	3,286	2	400
PA	62	53.2	42	31,927	8	393
SC						
SD	4	11.8			3	972
TN	10	12.7	9	27,161		
TX	20	41.3	20	32,856	5	1,299
UT	7	27.6	4	82	2	278
VA	14	9.7	10	7,837		
WA			6	287		
WV	3	0.1				
WI	4	2.0				
WY						
US ⁵	484	2,547.0	380	584,121	133	42,511
PR	6	0.8	5	54		

¹ Includes data for the calendar year.

² US totals are based on unrounded data and may not equal sum of parts.

³ Bison data not available for 2005.

⁴ N ENG includes CT, ME, MA, NH, RI, and VT.

⁵ States with no data printed are still included in US total. Data not printed to avoid disclosing individual operations. Puerto Rico is not included in US totals.

**Federally Inspected Plants and Head Slaughtered: Number
by Species, State, and United States, 2005^{1 2}**

State	Cattle		Calves		Hogs	
	Plants	Head	Plants	Head	Plants	Head
	<i>Number</i>	<i>1,000</i>	<i>Number</i>	<i>1,000</i>	<i>Number</i>	<i>1,000</i>
AL	3	0.1			7	99.6
AK	3	0.9			3	1.1
AZ					2	0.7
AR	9	4.7			8	157.0
CA	25	1,355.8	12	82.8	16	2,496.0
CO	21	2,079.7			17	8.0
DE-MD	19	42.1	16	1.4	14	18.5
FL					19	95.5
GA	13	232.4	5	1.8	16	47.0
HI	8	9.2			6	23.5
ID	14	366.2			10	143.7
IL			10	72.8	25	9,249.5
IN			1	3.9	7	7,027.7
IA					21	29,810.3
KS	20	7,287.6				
KY	18	7.6			20	2,308.5
LA					1	0.6
MI	25	417.7	11	22.8	22	102.5
MN	22	615.9			25	9,224.2
MS						
MO			8	0.3		
MT	9	5.2			9	2.7
NE	33	7,003.8			23	7,170.3
NV						
N ENG ³	23	11.1	20	5.1	24	16.7
NJ	12	25.8	12	76.8	8	113.8
NM	1	7.6			1	0.1
NY	36	35.5	28	107.5	33	30.0
NC	17	188.3	5	0.8	24	11,068.9
ND					11	160.2
OH	10	37.6	3	48.0	13	1,031.8
OK	4	0.7			6	4,953.4
OR	12	16.8			12	192.8
PA	85	826.3	38	153.0	81	2,830.3
SC						
SD					5	4,760.9
TN	13	11.2	3	1.2	18	642.9
TX	34	6,217.9	8	8.2	23	339.8
UT	10	586.1			7	24.1
VA	13	2.4			14	3,364.1
WA	10	785.5			6	21.3
WV	3	0.9			3	0.8
WI	11	1,393.8			7	450.1
WY						
US ⁴	657	31,831.6	227	717.7	630	102,518.9
PR	7	42.7	8	9.2	8	67.2

See footnote(s) at end of table.

--continued

**Federally Inspected Plants and Head Slaughtered: Number
by Species, State, and United States, 2005^{1 2} (continued)**

State	Sheep and Lambs		Goats	
	Plants	Head	Plants	Head
	<i>Number</i>	<i>1,000</i>	<i>Number</i>	<i>Number</i>
AL				
AK				
AZ	2	0.4	2	409
AR	7	0.4	6	218
CA			13	22,214
CO	17	1,019.1	14	7,621
DE-MD	18	35.4	14	25,682
FL	5	2.4	8	15,610
GA				
HI				
ID	9	2.1		
IL	18	183.7	16	25,660
IN	3	15.6	3	17,839
IA	5	412.1	2	1,952
KS	10	1.6	9	4,258
KY	17	13.3	13	7,018
LA				
MI	23	171.2	14	4,178
MN	13	1.8		
MS				
MO	36	5.3	28	3,662
MT	8	1.0		
NE	15	1.5		
NV	3	1.3		
N ENG ³			22	12,369
NJ	13	114.7	14	209,156
NM				
NY	36	25.9	24	33,459
NC	12	5.5	13	10,803
ND				
OH	7	0.2		
OK	4	0.2		
OR	12	17.8	10	1,571
PA	67	57.1	43	37,401
SC				
SD	5	8.1		
TN	10	10.5	10	29,692
TX	17	50.5	17	38,079
UT	6	25.4		
VA	13	10.3	9	10,950
WA	6	0.7		
WV				
WI				
WY				
US ⁴	496	2,554.6	371	561,148
PR	7	1.0		

¹ Includes data from week ending Jan 8, 2005 through Dec 31, 2005.

² US totals are based on unrounded data and may not equal sum of parts.

³ N ENG includes CT, ME, MA, NH, RI, and VT.

⁴ States with no data printed are still included in US total. Data not printed to avoid disclosing individual operations. Puerto Rico is not included in US totals.

**Cattle: Number of Federally Inspected Plants and Head Slaughtered,
by Size Group, United States, 2006¹**

Size Group	Plants	Head	Size Group	Plants	Head
	<i>Number</i>	<i>1,000</i>		<i>Number</i>	<i>1,000</i>
1 - 999	468	151.3	300,000 - 499,999	12	4,980.1
1,000 - 9,999	90	281.8	500,000 - 999,999	7	4,437.0
10,000 - 49,999	17	451.9	1,000,000 +	14	18,482.2
50,000 - 99,999	9	650.1			
100,000 - 199,999	11	1,730.4	Total ²	636	33,145.0
200,000 - 299,999	8	1,980.2			

¹ Includes data for the calendar year.

² Total may not add due to rounding.

**Calves: Number of Federally Inspected Plants and Head Slaughtered,
by Size Group, United States, 2006¹**

Size Group	Plants	Head	Size Group	Plants	Head
	<i>Number</i>	<i>1,000</i>		<i>Number</i>	<i>1,000</i>
1 - 99	171	2.1	25,000 - 49,999	5	182.0
100 - 999	39	12.3	50,000 +	5	378.6
1,000 - 9,999	14	44.7			
10,000 - 24,999	4	79.0	Total ²	238	698.7

¹ Includes data for the calendar year.

² Total may not add due to rounding.

**Hogs: Number of Federally Inspected Plants and Head Slaughtered,
by Size Group, United States, 2006¹**

Size Group	Plants	Head	Size Group	Plants	Head
	<i>Number</i>	<i>1,000</i>		<i>Number</i>	<i>1,000</i>
1 - 999	380	124.3	1,000,000 - 1,999,999	4	6,932.6
1,000 - 9,999	118	322.2	2,000,000 - 2,999,999	11	25,633.6
10,000 - 99,999	63	2,727.4	3,000,000 - 3,999,999	3	10,329.4
100,000 - 249,999	11	1,728.4	4,000,000 +	10	49,098.9
250,000 - 499,999	9	3,089.0			
500,000 - 999,999	5	3,702.7	Total ²	614	103,688.5

¹ Includes data for the calendar year.

² Total may not add due to rounding.

**Sheep and Lambs: Number of Federally Inspected Plants and Head Slaughtered,
by Size Group, United States, 2006¹**

Size Group	Plants	Head	Size Group	Plants	Head
	<i>Number</i>	<i>1,000</i>		<i>Number</i>	<i>1,000</i>
1 - 999	401	42.8	100,000 - 249,999	2	286.1
1,000 - 9,999	64	207.6	250,000+	4	1,723.0
10,000 - 24,999	9	141.7			
25,000 - 99,999	4	145.8	Total ²	484	2,547.0

¹ Includes data for the calendar year.

² Total may not add due to rounding.

**Cattle: Number of Federally Inspected Plants and Head Slaughtered,
by Size Group, United States, 2005 ¹**

Size Group	Plants	Head	Size Group	Plants	Head
	<i>Number</i>	<i>1,000</i>		<i>Number</i>	<i>1,000</i>
1 - 999	488	159.6	300,000 - 499,999	13	4,921.8
1,000 - 9,999	88	276.1	500,000 - 999,999	7	4,739.8
10,000 - 49,999	21	611.4	1,000,000 +	13	17,039.2
50,000 - 99,999	7	518.5			
100,000 - 199,999	14	2,126.3	Total ²	657	31,831.6
200,000 - 299,999	6	1,438.9			

¹ Includes data from week ending Jan 8, 2005 through Dec 31, 2005.

² Total may not add due to rounding.

**Calves: Number of Federally Inspected Plants and Head Slaughtered,
by Size Group, United States, 2005 ¹**

Size Group	Plants	Head	Size Group	Plants	Head
	<i>Number</i>	<i>1,000</i>		<i>Number</i>	<i>1,000</i>
1 - 99	159	2.3	25,000 - 49,999	7	273.2
100 - 999	36	11.2	50,000 +	4	290.4
1,000 - 9,999	16	56.2			
10,000 - 24,999	5	84.4	Total ²	227	717.7

¹ Includes data from week ending Jan 8, 2005 through Dec 31, 2005.

² Total may not add due to rounding.

**Hogs: Number of Federally Inspected Plants and Head Slaughtered,
by Size Group, United States, 2005 ¹**

Size Group	Plants	Head	Size Group	Plants	Head
	<i>Number</i>	<i>1,000</i>		<i>Number</i>	<i>1,000</i>
1 - 999	390	126.6	1,000,000 - 1,999,999	5	8,263.9
1,000 - 9,999	120	318.4	2,000,000 - 2,999,999	10	23,231.1
10,000 - 99,999	67	2,679.2	3,000,000 - 3,999,999	4	14,441.6
100,000 - 249,999	13	2,048.1	4,000,000 +	9	45,362.3
250,000 - 499,999	7	2,401.6			
500,000 - 999,999	5	3,646.2	Total ²	630	102,518.9

¹ Includes data from week ending Jan 8, 2005 through Dec 31, 2005.

² Total may not add due to rounding.

**Sheep and Lambs: Number of Federally Inspected Plants and Head Slaughtered,
by Size Group, United States, 2005 ¹**

Size Group	Plants	Head	Size Group	Plants	Head
	<i>Number</i>	<i>1,000</i>		<i>Number</i>	<i>1,000</i>
1 - 999	420	50.1	100,000 - 249,999	2	308.3
1,000 - 9,999	59	212.7	250,000+	4	1,703.3
10,000 - 24,999	7	125.3			
25,000 - 99,999	4	155.0	Total ²	496	2,554.6

¹ Includes data from week ending Jan 8, 2005 through Dec 31, 2005.

² Total may not add due to rounding.

**Livestock Slaughter Plants: Number by Type of Inspection,
State, and United States, January 1, 2006-07¹**

State	Under Federal Inspection		Other		Total	
	2006	2007	2006	2007	2006	2007
	<i>Number</i>	<i>Number</i>	<i>Number</i>	<i>Number</i>	<i>Number</i>	<i>Number</i>
AL	7	7	37	33	44	40
AK	3	3	0	0	3	3
AZ	3	3	10	11	13	14
AR	9	9	35	31	44	40
CA	32	32	37	37	69	69
CO	25	26	20	20	45	46
DE-MD	20	20	3	3	23	23
FL	22	20	0	0	22	20
GA	16	15	56	62	72	77
HI	11	12	0	0	11	12
ID	14	12	37	26	51	38
IL	33	34	67	58	100	92
IN	7	8	83	81	90	89
IA	25	25	124	124	149	149
KS	22	22	82	81	104	103
KY	21	20	30	28	51	48
LA	1	2	46	44	47	46
MI	29	29	35	35	64	64
MN	27	24	97	91	124	115
MS	6	6	17	17	23	23
MO	42	40	85	83	127	123
MT	9	8	194	196	154	204
NE	35	32	78	74	113	106
NV	3	3	0	0	3	3
N ENG ²	22	21	18	16	40	37
NJ	15	15	2	2	17	17
NM	1	2	16	16	17	18
NY	41	36	30	30	71	66
NC	30	30	30	29	60	59
ND	11	11	56	54	67	65
OH	18	16	135	131	153	147
OK	7	7	75	62	82	69
OR	12	13	12	16	24	29
PA	93	91	160	159	253	250
SC	7	8	29	22	36	30
SD	9	9	88	88	97	97
TN	19	19	8	8	27	27
TX	43	45	73	71	116	116
UT	11	11	20	20	31	31
VA	16	17	41	41	57	58
WA	12	12	7	7	19	19
WV	3	4	26	21	29	25
WI	14	14	103	105	117	119
WY	0	0	34	27	34	27
US ³	806	793	2,136	2,060	2,893	2,853
PR	10	9	0	0	10	9

¹ Data includes 'Temporarily Closed' plants.

² N ENG includes CT, ME, MA, NH, RI, and VT.

³ Puerto Rico is not included in US totals.

**Annual Federally Inspected Slaughter: Number of Head
by Species, Class, and Week, United States, 2006 and 2005 Total ¹**

Week Ending	Total Cattle	Steers	Heifers	Dairy Cows	Other Cows	Bulls	Total Calves
	<i>1,000 Head</i>	<i>1,000 Head</i>	<i>1,000 Head</i>	<i>1,000 Head</i>	<i>1,000 Head</i>	<i>1,000 Head</i>	<i>1,000 Head</i>
Jan 7, 2006	527.2	266.0	160.4	42.8	49.7	8.2	11.5
Jan 14	606.9	303.4	177.5	50.0	64.8	11.2	12.0
Jan 21	605.3	313.4	177.4	47.2	57.6	9.7	12.0
Jan 28	608.5	313.0	187.3	45.8	52.8	9.5	13.2
Feb 4	595.7	300.3	189.3	44.6	51.4	10.1	12.5
Feb 11	585.1	286.5	196.1	43.4	49.6	9.5	12.6
Feb 18	545.0	283.6	163.0	41.0	47.9	9.6	12.6
Feb 25	576.6	297.6	181.9	41.9	46.4	8.8	13.1
Mar 4	620.5	315.0	198.2	45.4	52.1	9.8	13.8
Mar 11	616.7	317.0	194.0	46.4	50.0	9.4	13.6
Mar 18	623.3	328.1	190.0	45.3	49.7	10.2	12.4
Mar 25	585.1	304.4	189.1	42.3	41.1	8.2	12.4
Apr 1	613.3	323.2	189.3	43.1	48.4	9.3	12.1
Apr 8	636.0	343.4	187.9	43.7	51.7	9.3	12.0
Apr 15	611.3	325.3	184.8	42.5	49.8	8.9	11.0
Apr 22	627.0	342.9	182.5	40.2	52.5	9.0	11.2
Apr 29	681.4	361.5	204.8	43.7	61.5	9.9	12.6
May 6	628.1	341.7	184.6	40.8	52.0	9.0	12.7
May 13	707.2	387.5	216.7	40.6	52.9	9.5	12.1
May 20	701.9	399.0	199.6	40.8	52.8	9.8	12.3
May 27	695.9	379.2	211.6	39.0	56.3	9.7	12.6
Jun 3	613.9	342.4	180.9	34.7	48.0	8.1	11.4
Jun 10	711.7	390.7	207.8	41.0	61.5	10.7	13.6
Jun 17	707.6	397.1	196.7	40.7	62.5	10.6	12.7
Jun 24	712.2	397.1	204.8	41.0	59.2	10.1	13.4
Jul 1	706.7	402.9	196.0	40.8	56.7	10.4	12.9
Jul 8	598.2	336.0	174.0	34.3	47.0	6.9	11.9
Jul 15	695.4	373.3	201.3	46.2	63.9	10.8	13.2
Jul 22	662.5	365.9	183.2	42.8	60.5	10.0	14.0
Jul 29	651.1	366.4	175.4	43.2	56.7	9.4	14.7
Aug 5	627.6	349.5	166.5	42.9	59.2	9.6	15.1
Aug 12	679.2	372.0	188.0	47.0	62.3	9.9	14.4
Aug 19	689.4	382.7	190.0	47.4	58.6	10.7	14.1
Aug 26	690.0	368.3	198.0	48.6	63.6	11.5	13.9
Sep 2	684.5	370.2	191.8	49.8	61.6	11.2	14.4
Sep 9	590.6	323.9	165.6	43.9	48.0	9.2	12.0
Sep 16	667.0	360.8	183.6	49.0	62.4	11.3	14.2
Sep 23	657.6	348.7	188.8	49.9	59.3	11.0	13.5
Sep 30	635.8	336.0	179.3	51.2	58.4	10.9	13.8
Oct 7	635.2	332.5	183.1	49.9	59.2	10.5	13.2
Oct 14	621.2	323.8	176.7	48.7	61.4	10.6	13.5
Oct 21	643.2	322.5	194.4	51.9	63.6	10.8	14.0
Oct 28	649.1	314.4	202.3	50.6	70.2	11.6	15.3
Nov 4	653.9	315.2	201.2	53.4	72.9	11.2	14.9
Nov 11	648.4	313.4	199.4	52.3	71.8	11.5	15.0
Nov 18	659.8	322.7	201.7	52.5	72.3	10.6	15.5
Nov 25	596.6	301.7	191.7	39.5	56.1	7.7	13.3
Dec 2	630.2	299.5	200.0	53.1	68.1	9.6	17.0
Dec 9	643.5	316.5	193.6	53.2	70.0	10.2	16.7
Dec 16	644.0	314.1	198.7	53.1	67.9	10.3	16.4
Dec 23	615.6	310.4	188.1	50.1	57.9	9.0	16.8
Dec 30	525.1	275.7	151.3	40.6	50.9	6.6	13.5
2006 Total	33,144.5	17,477.9	9,819.4	2,353.5	2,982.7	511.0	698.5
2005 Total ¹	31,831.6	16,797.0	9,761.3	2,252.0	2,522.9	498.3	717.7

See footnote(s) at end of table.

--continued

**Annual Federally Inspected Slaughter: Number of Head
by Species, Class, and Week, United States, 2006 and 2005 Total ¹ (continued)**

Week Ending	Total Hogs	Barrows & Gilts	Sows	Boars	Total Sheep	Mature Sheep	Lambs & Yearlings
	<i>1,000 Head</i>	<i>1,000 Head</i>	<i>1,000 Head</i>	<i>1,000 Head</i>	<i>1,000 Head</i>	<i>1,000 Head</i>	<i>1,000 Head</i>
Jan 7, 2006	1,829.6	1,770.1	54.7	4.8	43.0	2.2	40.8
Jan 14	2,067.4	1,999.1	61.9	6.4	52.7	2.4	50.3
Jan 21	2,104.1	2,038.7	58.5	6.8	47.1	2.0	45.1
Jan 28	2,028.9	1,963.7	59.7	5.4	47.2	1.7	45.5
Feb 4	2,036.9	1,973.7	57.7	5.4	46.9	1.6	45.3
Feb 11	2,020.2	1,956.9	58.0	5.4	48.0	2.2	45.8
Feb 18	1,991.4	1,927.4	59.0	5.1	50.0	1.7	48.2
Feb 25	1,961.8	1,897.7	59.8	4.3	46.3	1.9	44.4
Mar 4	1,982.9	1,915.2	62.2	5.5	50.0	1.9	48.1
Mar 11	2,009.3	1,941.4	62.4	5.5	48.3	2.1	46.1
Mar 18	2,014.5	1,947.1	61.8	5.6	50.5	2.2	48.3
Mar 25	1,953.8	1,887.3	61.5	5.1	57.1	2.1	55.0
Apr 1	1,983.5	1,914.1	64.1	5.4	59.6	2.2	57.5
Apr 8	2,012.2	1,944.3	62.0	5.9	66.9	2.5	64.4
Apr 15	1,936.1	1,869.7	60.8	5.5	57.3	2.2	55.1
Apr 22	1,929.1	1,863.3	60.3	5.4	57.6	3.2	54.4
Apr 29	1,979.5	1,911.3	62.6	5.6	47.8	2.2	45.6
May 6	1,825.0	1,755.8	63.3	5.9	46.5	2.6	43.9
May 13	1,940.3	1,869.1	65.5	5.7	50.6	2.3	48.4
May 20	1,956.7	1,886.9	64.1	5.7	47.1	2.3	44.8
May 27	1,925.7	1,857.8	61.0	6.8	49.7	2.5	47.2
Jun 3	1,673.1	1,611.3	56.6	5.1	38.5	2.2	36.3
Jun 10	1,897.4	1,825.9	64.5	7.0	45.1	2.3	42.8
Jun 17	1,821.0	1,751.1	63.9	6.0	44.6	2.3	42.3
Jun 24	1,828.5	1,759.3	63.6	5.6	45.1	2.3	42.8
Jul 1	1,858.9	1,786.3	66.4	6.2	48.4	2.7	45.8
Jul 8	1,622.1	1,569.0	48.6	4.6	39.4	2.1	37.3
Jul 15	1,943.3	1,874.1	63.5	5.7	45.3	2.2	43.1
Jul 22	1,947.6	1,877.5	64.4	5.7	46.1	2.1	44.0
Jul 29	1,898.6	1,830.3	62.1	6.3	48.8	2.3	46.5
Aug 5	1,886.7	1,823.8	57.6	5.3	43.5	2.2	41.4
Aug 12	1,888.0	1,822.3	60.7	5.0	45.7	2.1	43.6
Aug 19	1,960.9	1,895.2	60.4	5.4	45.3	2.3	43.1
Aug 26	2,005.9	1,937.0	63.0	5.9	48.1	2.3	45.7
Sep 2	2,054.0	1,984.0	63.7	6.3	50.2	2.6	47.6
Sep 9	1,893.5	1,828.5	58.2	6.7	42.9	2.3	40.6
Sep 16	2,134.9	2,057.6	67.7	9.6	49.7	2.5	47.2
Sep 23	2,139.9	2,064.4	66.2	9.3	52.3	2.3	50.0
Sep 30	2,140.1	2,066.2	64.6	9.3	50.5	2.3	48.2
Oct 7	2,148.9	2,077.8	62.0	9.2	50.0	2.4	47.6
Oct 14	2,160.8	2,088.2	64.2	8.3	49.4	2.2	47.2
Oct 21	2,202.4	2,129.0	64.3	9.1	51.7	2.8	49.0
Oct 28	2,182.5	2,106.3	66.3	9.8	50.1	2.1	48.0
Nov 4	2,187.4	2,113.0	65.4	9.0	50.4	2.4	48.0
Nov 11	2,147.5	2,071.4	66.8	9.3	51.7	2.1	49.5
Nov 18	2,139.6	2,059.6	70.4	9.7	50.8	2.1	48.8
Nov 25	1,971.1	1,913.3	49.8	7.9	41.2	2.1	39.1
Dec 2	2,159.3	2,082.7	67.2	9.3	47.6	2.2	45.4
Dec 9	2,115.5	2,037.2	69.2	9.2	53.8	2.2	51.6
Dec 16	2,157.0	2,077.5	70.6	8.9	55.2	2.4	52.8
Dec 23	2,219.9	2,142.0	68.1	9.8	48.7	2.8	45.9
Dec 30	1,812.9	1,760.3	46.2	6.4	45.1	2.9	42.3
2006 Total	103,688.1	100,112.9	3,227.1	348.1	2,545.5	118.0	2,427.5
2005 Total ¹	102,518.9	99,122.9	3,116.1	279.9	2,554.6	129.3	2,425.3

See footnote(s) at end of table.

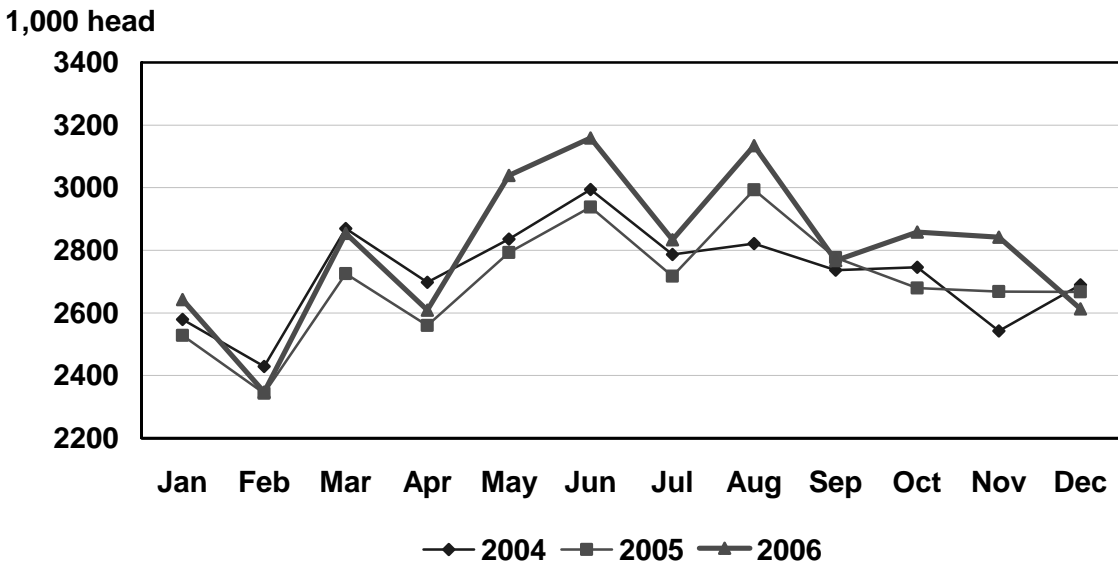
--continued

**Annual Federally Inspected Slaughter: Number of Head
by Species and Week, United States, 2006 and 2005 Total ¹ (continued)**

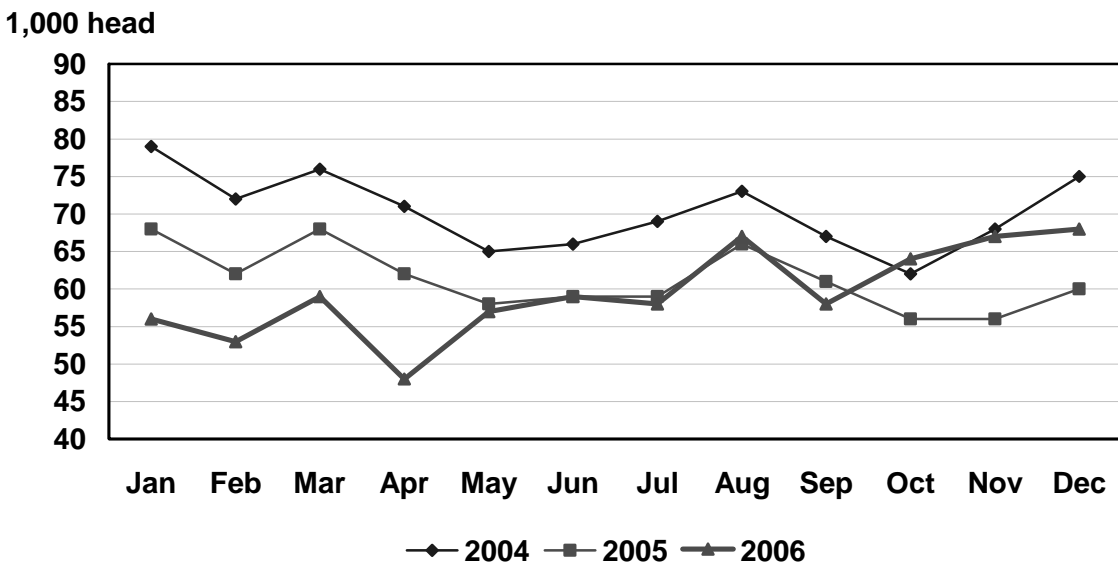
Week Ending	Goats	Equine	Bison
	<i>Total Head</i>	<i>Total Head</i>	<i>Total Head</i>
Jan 7, 2006	10,271	1,409	774
Jan 14	12,431	2,019	1,065
Jan 21	9,189	1,887	834
Jan 28	9,696	1,811	1,111
Feb 4	8,860	1,887	772
Feb 11	8,595	1,921	723
Feb 18	8,911	1,655	943
Feb 25	8,021	1,588	752
Mar 4	9,055	1,712	616
Mar 11	10,704	1,981	923
Mar 18	10,173	1,616	792
Mar 25	9,384	1,541	819
Apr 1	9,982	1,953	733
Apr 8	14,352	1,937	648
Apr 15	14,221	2,423	591
Apr 22	11,810	1,929	794
Apr 29	9,443	2,183	813
May 6	10,038	1,646	662
May 13	10,583	2,013	791
May 20	10,677	2,020	934
May 27	11,219	2,183	594
Jun 3	9,748	1,781	582
Jun 10	10,229	2,301	805
Jun 17	10,901	2,129	683
Jun 24	10,515	2,129	848
Jul 1	12,367	2,069	735
Jul 8	8,954	1,550	829
Jul 15	10,714	1,935	1,050
Jul 22	10,847	1,846	857
Jul 29	10,478	2,025	849
Aug 5	10,340	1,866	676
Aug 12	10,751	2,198	701
Aug 19	11,169	1,458	694
Aug 26	11,437	2,456	778
Sep 2	11,545	2,520	720
Sep 9	11,389	1,724	744
Sep 16	11,716	2,463	893
Sep 23	14,118	2,234	971
Sep 30	13,218	2,225	843
Oct 7	12,425	2,359	965
Oct 14	10,990	2,195	706
Oct 21	15,330	2,166	756
Oct 28	10,553	2,098	792
Nov 4	10,939	2,363	781
Nov 11	11,633	2,233	929
Nov 18	12,554	2,315	1,417
Nov 25	11,395	2,058	769
Dec 2	11,375	2,551	967
Dec 9	11,933	2,446	782
Dec 16	13,421	2,492	1,030
Dec 23	17,270	2,140	931
Dec 30	13,874	1,260	744
2006 Total	581,743	104,899	42,511
2005 Total ¹	561,148	94,037	35,649

¹ Includes data from week ending Jan 8, 2005 through Dec 31, 2005.

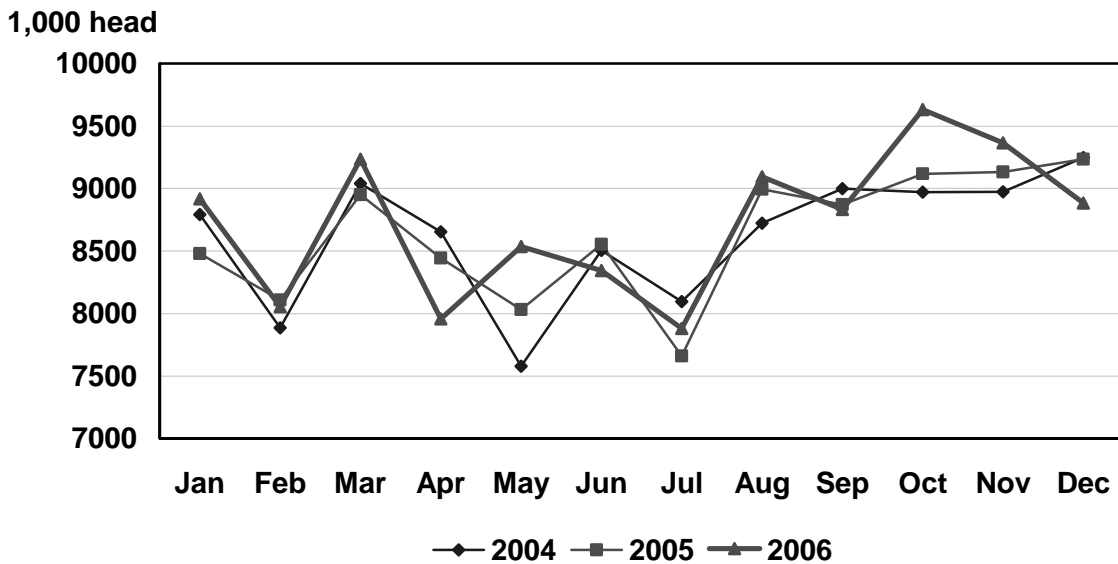
U.S. Monthly Commercial Slaughter Cattle



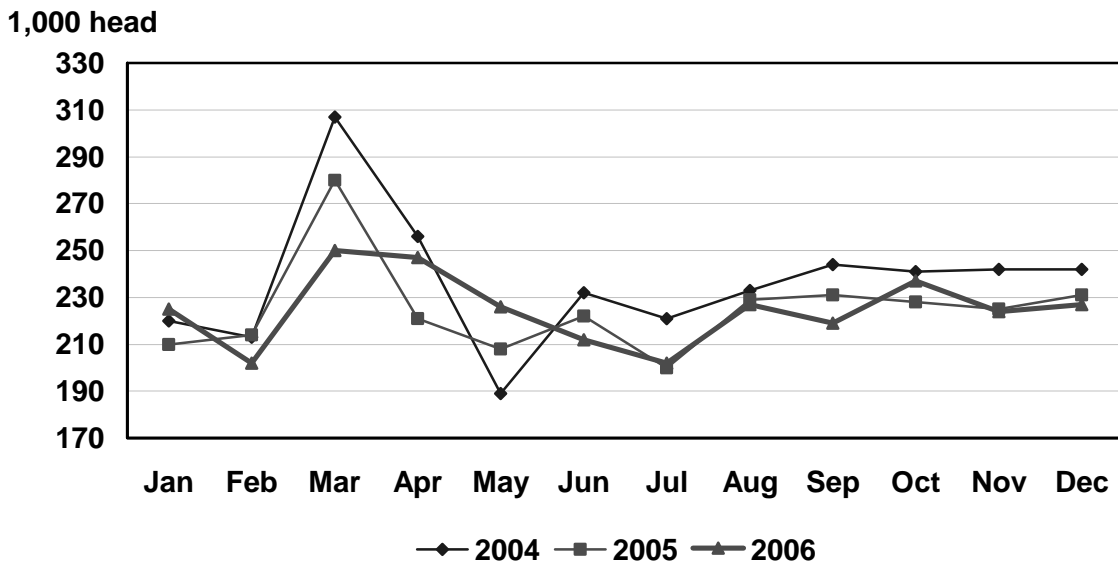
U.S. Monthly Commercial Slaughter Calves



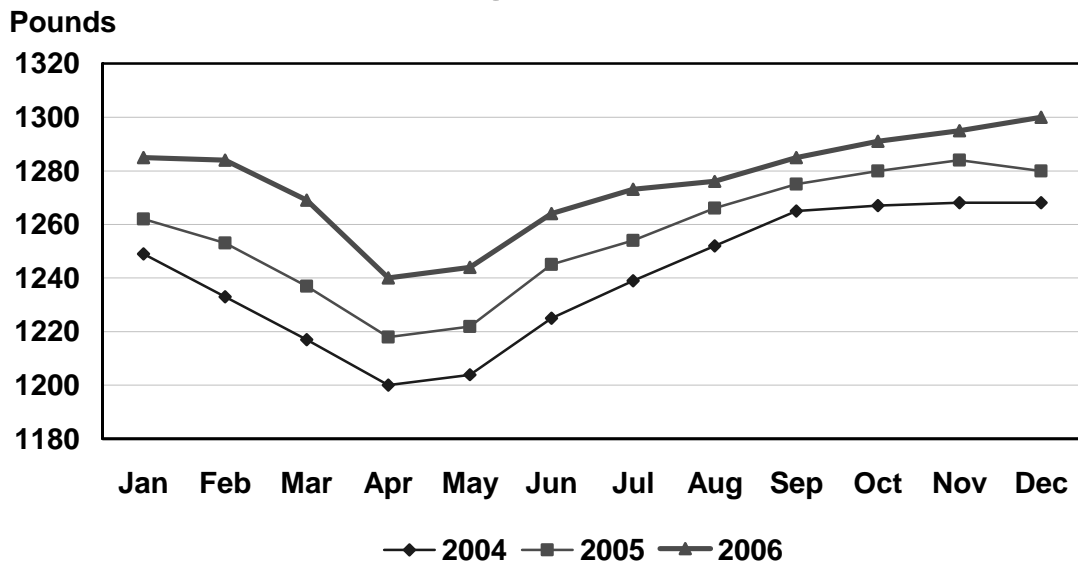
U.S. Monthly Commercial Slaughter Hogs



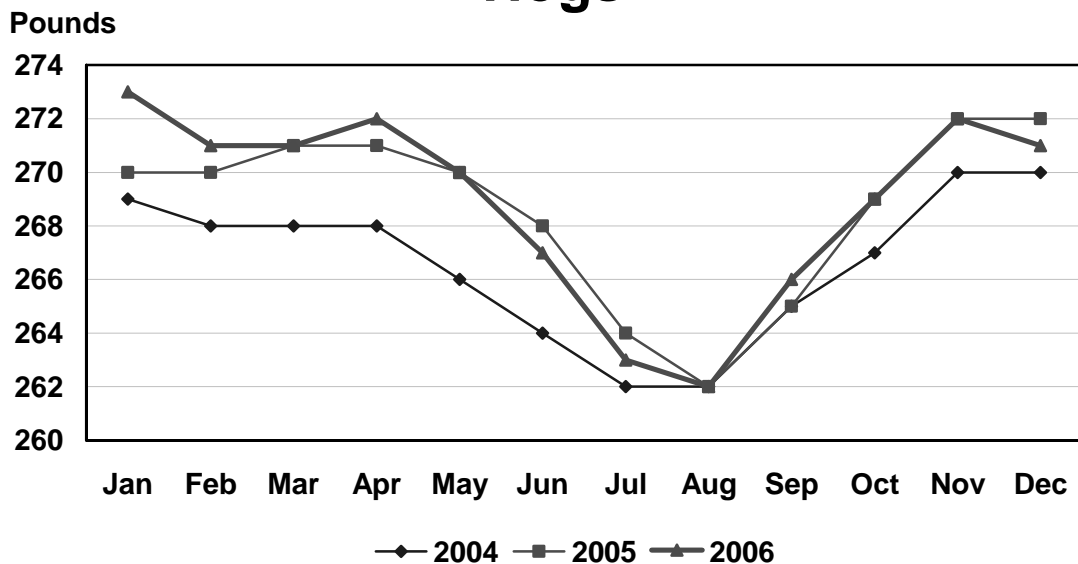
U.S. Monthly Commercial Slaughter Sheep



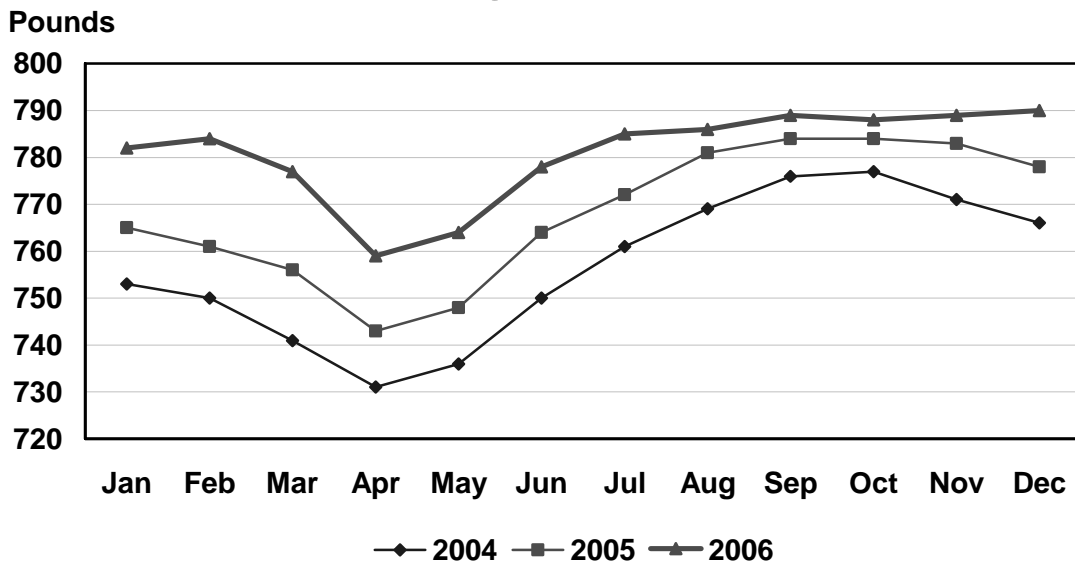
U.S. Monthly Commercial Slaughter Average Live Weight Cattle



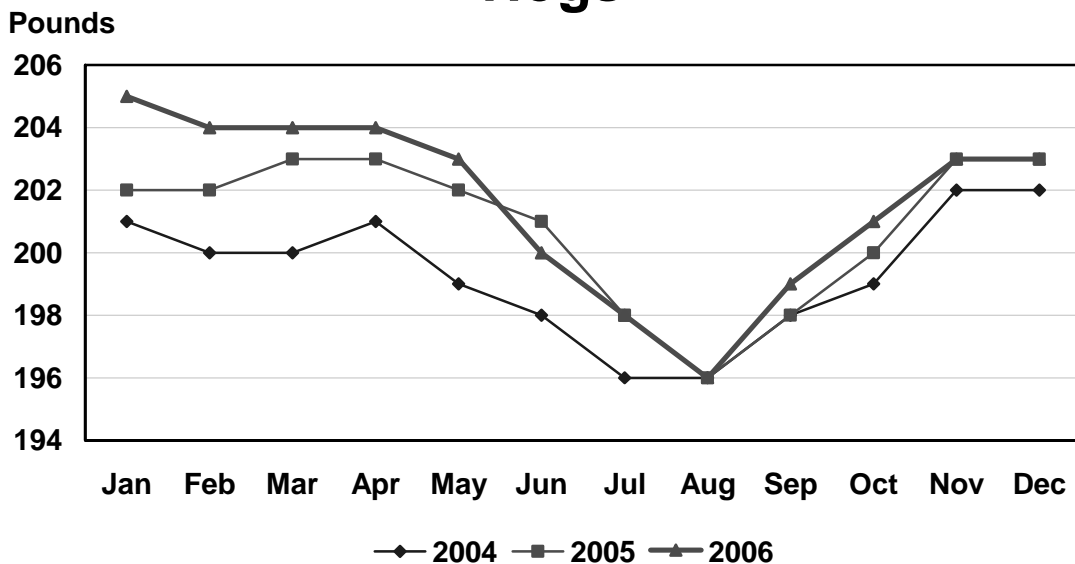
U.S. Monthly Commercial Slaughter Average Live Weight Hogs



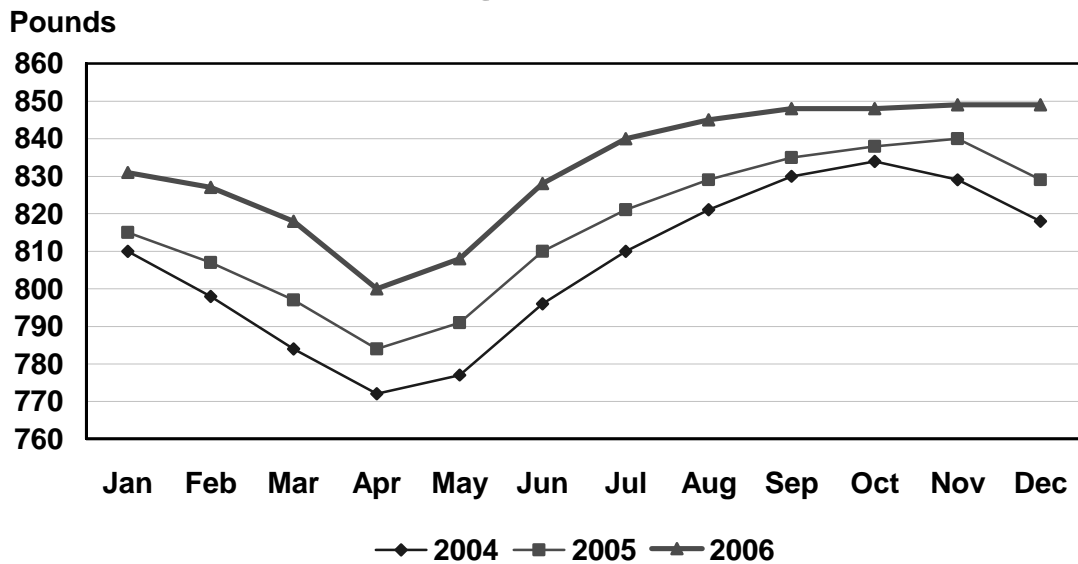
U.S. Monthly Federally Inspected Average Dressed Weight Cattle



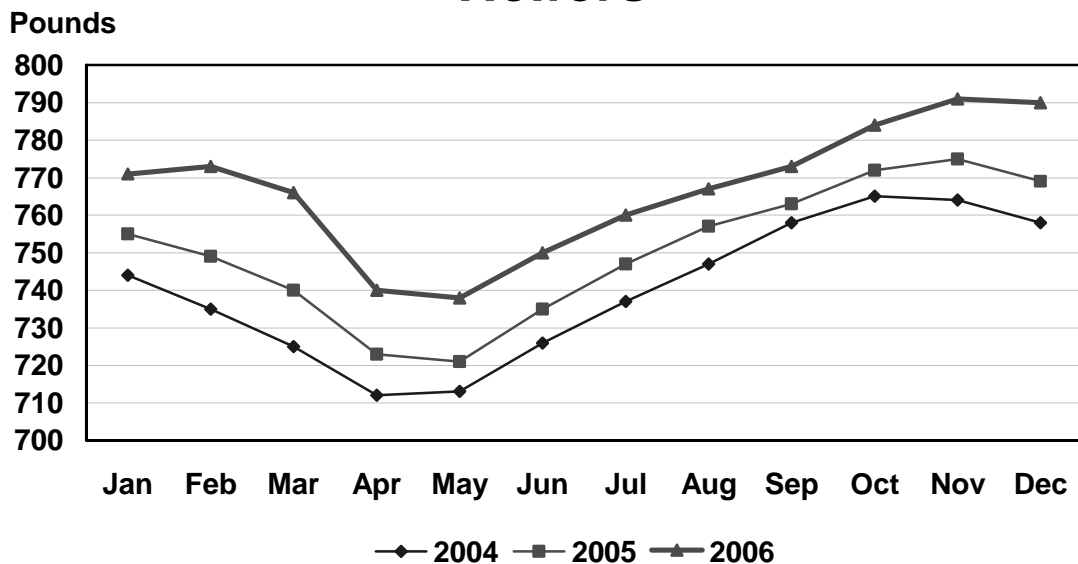
U.S. Monthly Federally Inspected Average Dressed Weight Hogs



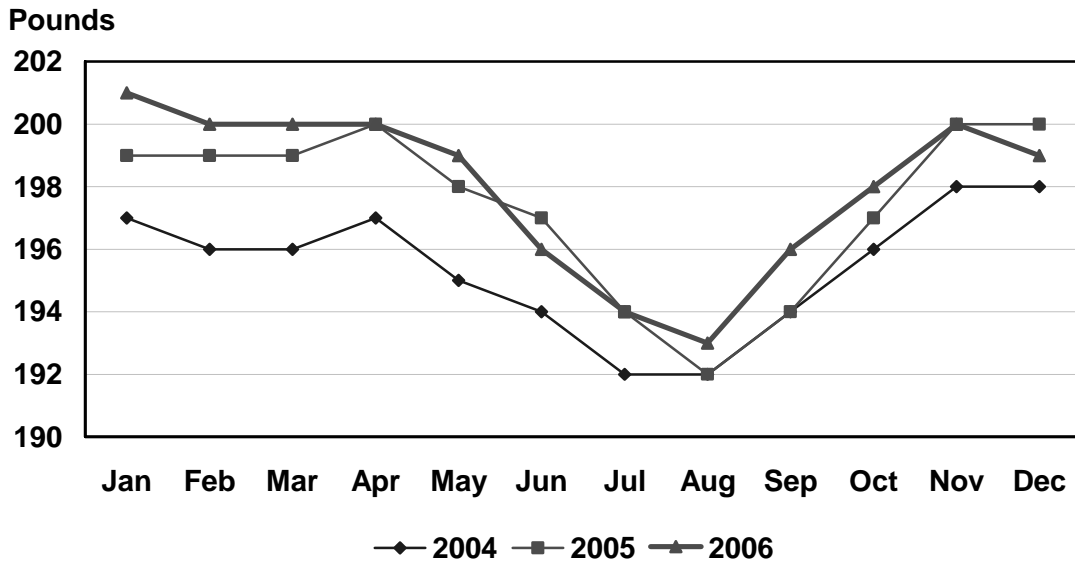
U.S. Monthly Federally Inspected Average Dressed Weight Steers



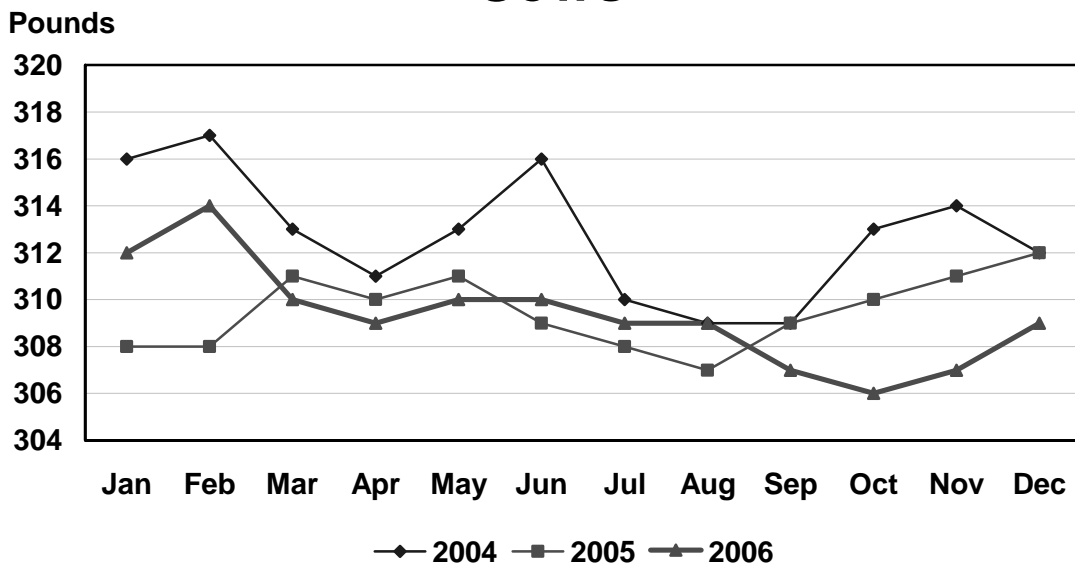
U.S. Monthly Federally Inspected Average Dressed Weight Heifers



U.S. Monthly Federally Inspected Average Dressed Weight Barrows and Gilts



U.S. Monthly Federally Inspected Average Dressed Weight Sows



Reliability of Livestock Slaughter Estimates

Data Sources: Primary data for the commercial livestock slaughter estimates are obtained from electronic reports completed by inspectors from the Food Safety and Inspection Service (FSIS), USDA, which provide daily counts of animals slaughtered in Federally Inspected (FI) plants, in addition to total live and dressed weights. These counts are combined with data from State-administered Non-Federally Inspected (NFI) slaughter plants to derive total commercial slaughter estimates. More than 95 percent of the total U.S. slaughter for any species is under Federal Inspection.

There are approximately 800 livestock slaughter plants in the U.S. operating under Federal Inspection and over 2,000 Non-Federally Inspected (State-inspected or custom-exempt) slaughter plants. Slaughter from State-inspected Talmedge-Aiken plants is included in FI totals (see Types of Plants, page 69). To prevent duplication in reporting between FI and NFI plants and assure all FI plants are included, certificates prepared by FSIS identifying operating status are constantly monitored.

Revision Policy: Number of head slaughtered, live weights, and dressed weights are subject to revision the following month after the monthly release. Annual totals are published in the slaughter summary each March which includes any revisions made to current and previous year's published data. Revisions are generally the result of late reports received from slaughter plants and are usually less than one-half of one percent. No revisions will be made to the previous year's data after the publication of the annual summary in March.

Procedures and Reliability: The livestock slaughter data is obtained electronically on a daily basis and summarized approximately two weeks after the week of slaughter. An edit compares each plant's data with the historical data for that plant. Data are checked for unusual values for head kill, patterns of kill, average weights, and dressing percent, based on each plant's past operating profile. In addition, the edit provides a listing of missing reports for follow-up contact with FSIS. Average live and dressed weights and dressing percentages by State are compared with the previous weeks as an additional check. Fluctuations are frequently the result of plants permanently or temporarily closing and a shift in the species reported.

The FSIS District Veterinary Medical Specialists (DVMS) are contacted by e-mail or telephone for missing or potentially erroneous slaughter data. This assures that plants slaughtering a large number of head or several species are accounted for each week. Any corrections FSIS makes to the slaughter data are included in the summary.

Imputation may be necessary for incomplete reports. The imputation of live and dressed weights is based on the current week reported data of plants of similar size and location. Imputation for live and dressed weight data for cattle and hogs is less than 10 percent and 7 percent, respectively. The imputation for calves and sheep is more frequent and variable. If no data is received electronically or by other means, for plants slaughtering fewer than 50 total head weekly of only one species, data are imputed. The imputation of head for any plant is based on the historical data for that particular plant. The imputation of head slaughtered is rare but when necessary, the imputed head kill for missing plants usually is less than 1 percent of the U.S. head kill totals.

FI data are summarized weekly and accumulated to a monthly total for this release. These weekly totals are published by USDA's Agricultural Marketing Service (AMS) in **Livestock, Meat, Wool Market News**, Weekly Summary, and Statistics and are also available on the NASS website. NFI data are summarized monthly only.

Livestock slaughter estimates are based on a census of operating plants and therefore, have no sampling error. However, they may be subject to errors such as omissions, duplications and mistakes in reporting, recording and processing the data. These errors are minimized through rigid quality controls in the edit and summarization process, and a careful review of all reported data for consistency and reasonableness.

No data are published when an individual plant's data could be divulged. If not published, these data are still included in U.S. and region totals. A review of the data is made annually to determine the publishable data.

Types of Livestock Slaughter Plants

There are generally **four types** of slaughtering plants.

- (1) **Federally Inspected (FI) Plants:** Plants that transport meat interstate must employ federal inspectors to assure compliance with USDA standards. Any State whose commercial plants operate entirely under federal inspection may still have custom-exempt establishments for which NFI estimates are made.
- (2) **Talmedge-Aiken (TA) Plants:** Slaughter plants in which USDA is responsible for inspection. However, federal inspection is carried out by State employees. These plants are considered to be federally inspected.
- (3) **Non-Federally Inspected (NFI) Plants:** Plants which sell and transport only intrastate. State inspectors assure compliance with individual State standards for these NFI plants. Mobile slaughtering units are excluded and are considered farm slaughter.
- (4) **Custom-Exempt Plants:** Plants that do not sell meat but operate on a custom basis only are custom-exempt. The animals and meat are not inspected, but the facilities must meet health standards. These are considered NFI plants and head kill is included in NFI totals.

Terms and Definitions Used for Livestock Slaughter Estimates

Commercial Production: Includes slaughter and meat production in federally inspected and other plants, but excludes animals slaughtered on farms.

Dressed Weight: The weight of a chilled animal carcass. Beef with kidney knob in; veal with hide off; lamb and mutton with pluck out; pork with leaf fat and kidneys out, jowls on and head off.

Dressing Percent: Usually expressed as a percentage yield of chilled carcass in relation to the weight of the live animal on hoof. For example, a live hog that weighed 200 pounds on hoof and yielded a carcass weighing 140 pounds would have a dressing percentage of 70.

Food and Meat Inspection: Includes examination, checking, or testing of a carcass and/or meat against established government standards and involves checking the facility for cleanliness, health of animals, or parts of animals and quality of the meat produced.

Live Weight: The gross weight of a live animal when received at the slaughter plant.

Plant, Slaughter: An establishment where animals are killed and butchered.

Red Meat: Red meat production is the carcass weight after slaughter excluding condemnation and is comprised of beef, veal, pork, and lamb and mutton. The FI red meat production is equal to the total carcass weight after slaughter. The NFI meat production formula is (NFI head kill) X (live weight) X (FI dressing percentage) = NFI red meat production.

Slaughter: Killing and butchering of animals primarily for food.

Slaughter, Farm: Animals slaughtered on farms primarily for home consumption. Excludes custom slaughter for farmers at commercial establishments, but includes mobile slaughtering on farms. These estimates appear only in the annual slaughter release.

Wholesome Meat Act: Legislation that specifies that all meat produced for sale in the U.S. must be inspected. Meat that is transported interstate must be inspected in compliance with Federal (USDA) Standards.

Information Contacts

Listed below are the commodity specialists in the Livestock Branch of the National Agricultural Statistics Service to contact for additional information.

Dan Kerestes, Chief, Livestock Branch..... (202) 720-3570

William Weaver, Head, Livestock Section (202) 720-3570

 Bruce Boess – Hogs and Pigs..... (202) 720-3106

 Shawn Clark – Dairy Products (202) 690-3236

 Jason Hardegree – Milk Production and Milk Cows..... (202) 720-3278

 Scott Hollis – Sheep & Lambs, Goats (202) 720-4751

 Mike Miller – Cattle, Cattle on Feed (202) 720-3040

 Benita Hodge – Livestock Slaughter (515) 284-4340

 Charmaine Wilson – Dairy Products Prices..... (202) 690-2168

Index

	Page
Commercial Slaughter - Number of Head, Total Live Weight, and Average Live Weight, by Month, by State	
Calves	34
Cattle	28
Hogs	40
Sheep and Lambs	46
 Federally Inspected Slaughter	
Average Dressed Weight by Species and Class, U.S.	5
Classification by Head and by Percent, U.S.	12
Number of Plants and Head Slaughtered, by Size Group, U.S.	56
Number of Plants and Head Slaughtered, by Species, by State	52
Number of Slaughter Plants, by State	58
Number of Head Slaughtered by Species and Region.....	14
Percent of Total Commercial by Species, U.S.	3
Slaughter, by Weeks, U.S.	59
 Red Meat Production - Total Pounds by Type	
Commercial by Month, U.S.	2
Federally Inspected by Month, U.S.	2
Red Meat, by Month, by States	6
 Reliability Statement	68
 Slaughter - Number of Head and Average Live Weight, by Species and Month, U.S.	8

This report is made possible through the cooperative efforts of Agricultural Marketing Service, Food Safety and Inspection Service, and the Agricultural Statistics Board, NASS.

ACCESS TO REPORTS!!

For your convenience, there are several ways to obtain NASS reports, data products, and services:

INTERNET ACCESS

All NASS reports are available free of charge on the worldwide Internet. For access, connect to the Internet and go to the NASS Home Page at: **www.nass.usda.gov**.

E-MAIL SUBSCRIPTION

All NASS reports are available by subscription free of charge direct to your e-mail address. Starting with the NASS Home Page at **www.nass.usda.gov**, under the right navigation, *Receive reports by Email*, click on **National** or **State**. Follow the instructions on the screen.

PRINTED REPORTS OR DATA PRODUCTS

CALL OUR TOLL-FREE ORDER DESK: 800-999-6779 (U.S. and Canada)
Other areas, please call 703-605-6220 FAX: 703-605-6900
(Visa, MasterCard, check, or money order acceptable for payment.)

ASSISTANCE

For **assistance** with general agricultural statistics or further information about NASS or its products or services, contact the **Agricultural Statistics Hotline** at **800-727-9540**, 7:30 a.m. to 4:00 p.m. ET, or e-mail: **nass@nass.usda.gov**.

The U.S. Department of Agriculture (USDA) prohibits discrimination in all its programs and activities on the basis of race, color, national origin, age, disability, and where applicable, sex, marital status, familial status, parental status, religion, sexual orientation, genetic information, political beliefs, reprisal, or because all or part of an individual's income is derived from any public assistance program. (Not all prohibited bases apply to all programs.) Persons with disabilities who require alternative means for communication of program information (Braille, large print, audiotape, etc.) should contact USDA's TARGET Center at (202) 720-2600 (voice and TDD).

To file a complaint of discrimination, write to USDA, Director, Office of Civil Rights, 1400 Independence Avenue, S.W., Washington, D.C. 20250-9410, or call (800) 795-3272 (voice) or (202) 720-6382 (TDD). USDA is an equal opportunity provider and employer.