



United States
Department of
Agriculture

National
Agricultural
Statistics
Service



Livestock Slaughter 2008 Summary

March 2009

Mt An 1-2 -1 (09)

USDA



Contents

	Page
Summary	1
Red Meat Production: Federally Inspected, Commercial and Farm, by Type, U.S.	2
Number of Head Slaughtered: Commercial and Farm, by Species, U.S.	3
Federally Inspected Slaughter as Percent of Total Commercial, by Species, U.S.	3
Federally Inspected Average Dressed Weight, by Species and Class, U.S.	5
Commercial Red Meat Production, by State and U.S.	6
Number Slaughtered and Average Live Weights, by Species and Type of Slaughter, U.S.	8
Federally Inspected Number Slaughtered and Percent, by Species and Class, U.S.	12
Federally Inspected Slaughter by Species and Class, by Region	14
Commercial Cattle Slaughter: Number, Total and Average Live Weight, by State and U.S.	28
Commercial Calf Slaughter: Number, Total and Average Live Weight, by State and U.S.	34
Commercial Hog Slaughter: Number, Total and Average Live Weight, by State and U.S.	40
Commercial Sheep and Lamb Slaughter: Number, Total and Average Live Weight, by State and U.S.	46
Federally Inspected Plants & Head Slaughtered, by Species, State, and U.S.	52
Federally Inspected Plants & Head Slaughtered, by Species and Size Group, U.S.	56
Number of Slaughter Plants, by Type, State and U.S.	58
Federally Inspected Number Slaughtered, by Week, U.S.	59
Reliability Statement	68
Types of Livestock Slaughter Plants	69
Terms and Definitions	69
Information Contacts	70

Total Red Meat Production Sets All Time Record High in 2008

Total red meat production for the United States totaled 50.4 billion pounds in 2008, 3 percent higher than the previous year. Red meat includes beef, veal, pork, and lamb and mutton. Red meat production in **commercial plants** totaled 50.2 billion pounds. **On-farm** production totaled 137 million pounds.

Beef production totaled 26.7 billion pounds, up 1 percent from the previous year. **Veal production** totaled 152 million pounds, up 4 percent from last year. **Pork production**, at 23.4 billion pounds, was 6 percent above the previous year. **Lamb and mutton production** totaled 180 million pounds, down 5 percent from 2007.

Commercial cattle slaughter during 2008 totaled 34.4 million head, up slightly from 2007, with federal inspection comprising 98.4 percent of the total. The average live weight was 1,282 pounds, up 9 pounds from a year ago. **Steers** comprised 50.1 percent of the total federally inspected cattle slaughter, **heifers** 29.9 percent, **dairy cows** 7.7 percent, **other cows** 10.6 percent, and **bulls** 1.8 percent.

Commercial calf slaughter totaled 956,600 head, 26 percent higher than a year ago with 98.5 percent under federal inspection. The average live weight was 257 pounds, down 48 pounds from a year earlier.

Commercial hog slaughter totaled 116.5 million head, 7 percent higher than 2007 with 99.1 percent of the hogs slaughtered under federal inspection. The average live weight was down 1 pound from last year, at 268 pounds. **Barrows and gilts** comprised 96.6 percent of the total federally inspected hog slaughter.

Commercial sheep and lamb slaughter, at 2.56 million head, was down 5 percent from the previous year with 93.7 percent comprised by federal inspection. The average live weight was unchanged from 2007 at 136 pounds. **Lambs and yearlings** comprised 94.9 percent of the total federally inspected sheep slaughter.

There were 818 plants slaughtering under federal inspection on January 1, 2009 compared with 807 last year. Of these, 630 plants slaughtered at least one head of cattle during 2008 with the 14 largest plants slaughtering 55 percent of the total cattle killed. Hogs were slaughtered at 618 plants, with the 12 largest plants accounting for 55 percent of the total. Likewise, 6 of the 251 plants that slaughtered calves accounted for 55 percent of the total and 4 of the 496 plants that slaughtered sheep or lambs in 2008 comprised 65 percent of the total head.

Iowa, Kansas, Nebraska, and Texas accounted for 50 percent of the United States commercial red meat production in 2008, similar to 2007.

**Red Meat Production: Federally Inspected, Commercial and Farm
by Month and Total, United States, 2008 and 2007 Total ¹**

Month	Beef		Veal		Pork ²		Lamb and Mutton		Total Red Meat ²	
	Fed Insp	Total	Fed Insp	Total	Fed Insp	Total	Fed Insp	Total	Fed Insp	Total
	<i>Million Pounds</i>	<i>Million Pounds</i>	<i>Million Pounds</i>	<i>Million Pounds</i>	<i>Million Pounds</i>	<i>Million Pounds</i>	<i>Million Pounds</i>	<i>Million Pounds</i>	<i>Million Pounds</i>	<i>Million Pounds</i>
Com'l ³										
Jan 2008	2,199.4	2,232.7	11.0	11.3	2,143.5	2,159.0	14.2	14.7	4,368.1	4,417.7
Feb	2,009.6	2,038.6	10.8	11.0	1,888.5	1,902.7	14.5	15.0	3,923.3	3,967.4
Mar	2,071.4	2,100.5	11.1	11.3	1,947.7	1,962.0	15.4	16.0	4,045.6	4,089.8
Apr	2,224.5	2,255.4	11.7	11.9	2,000.5	2,015.6	14.6	15.3	4,251.3	4,298.2
May	2,351.2	2,380.1	11.2	11.5	1,801.7	1,815.5	14.4	15.0	4,178.6	4,222.0
Jun	2,234.2	2,263.4	11.5	11.7	1,747.9	1,761.8	12.5	13.1	4,006.2	4,050.0
Jul	2,341.9	2,371.6	12.1	12.3	1,837.4	1,852.5	13.0	13.7	4,204.3	4,250.1
Aug	2,238.8	2,266.8	11.0	11.2	1,787.9	1,803.9	12.5	13.3	4,050.2	4,095.2
Sep	2,239.0	2,269.9	12.5	12.8	1,960.1	1,975.8	13.6	14.5	4,225.2	4,272.9
Oct	2,305.4	2,340.9	13.2	13.5	2,144.1	2,159.9	14.2	15.0	4,476.9	4,529.3
Nov	1,933.1	1,959.3	10.9	11.3	1,873.7	1,886.1	12.2	12.8	3,830.0	3,869.5
Dec	2,051.3	2,082.0	13.0	13.3	2,036.8	2,052.1	14.5	15.4	4,115.6	4,162.8
2008 Total Com'l	26,200.0	26,560.7	139.8	143.1	23,169.9	23,347.0	165.7	173.8	49,675.4	50,224.6
Farm		102.3		8.6		19.8		6.4		137.1
Total		26,663.0		151.7		23,366.8		180.3		50,361.7
2007 Total Com'l	26,070.0	26,420.8	134.3	137.3	21,768.0	21,942.6	174.7	183.1	48,146.9	48,683.8
Farm		102.7		8.5		19.6		5.8		136.6
Total		26,523.5		145.7		21,962.2		188.9		48,820.4

¹ Totals may not add due to rounding.

² Excludes lard and rendered pork fat.

³ Based on packers' dressed weight and excludes farm slaughter.

**Number of Head Slaughtered: By Species,
Commercial and Farm, United States, 2007-08**

Species	Total Commercial		Farm ¹		Total Slaughter	
	2008	2007	2008	2007	2008	2007
	<i>1000 Head</i>	<i>1000 Head</i>	<i>1000 Head</i>	<i>1000 Head</i>	<i>1000 Head</i>	<i>1000 Head</i>
Cattle	34,364.9	34,264.1	149.5	150.2	34,514.4	34,414.3
Calves	956.6	758.1	36.5	36.8	993.1	794.9
Hogs	116,451.9	109,171.6	107.0	105.9	116,558.9	109,277.5
Sheep	2,555.5	2,693.8	94.6	85.0	2,650.1	2,778.8

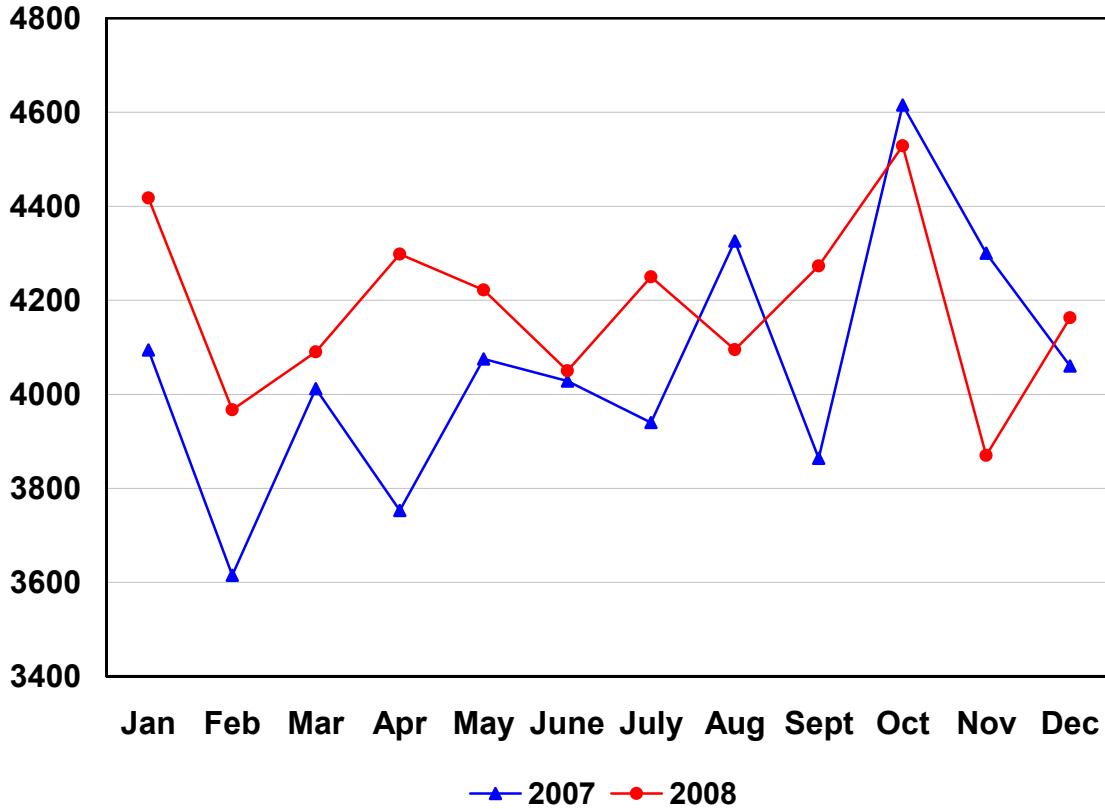
¹ Preliminary

**Federally Inspected Slaughter: Percent of Total Commercial
Slaughter by Species, Month, and Total, United States, 2008 and 2007 Total**

Month	Species			
	Cattle	Calves	Hogs	Sheep
	<i>Percent</i>	<i>Percent</i>	<i>Percent</i>	<i>Percent</i>
Jan 2008	98.2	98.5	99.2	94.6
Feb	98.3	98.2	99.1	95.3
Mar	98.4	98.4	99.2	95.1
Apr	98.4	98.5	99.1	93.6
May	98.6	98.6	99.1	94.4
Jun	98.5	98.5	99.1	93.9
Jul	98.5	98.7	99.1	93.2
Aug	98.5	98.6	99.0	92.9
Sep	98.4	98.6	99.1	92.5
Oct	98.1	98.3	99.1	93.0
Nov	98.4	98.3	99.2	93.5
Dec	98.2	98.6	99.1	92.0
2008 Total	98.4	98.5	99.1	93.7
2007 Total	98.4	98.2	99.1	93.9

U.S. Monthly Commercial Red Meat Production

Million Pounds



**Livestock Slaughter: Average Dressed Weight, Federal Inspection
by Classification and Month, United States, 2008 and 2007 Annual ¹**

Classification	Jan	Feb	Mar	Apr	May	Jun	Jul
	<i>Pounds</i>	<i>Pounds</i>	<i>Pounds</i>	<i>Pounds</i>	<i>Pounds</i>	<i>Pounds</i>	<i>Pounds</i>
Cattle	775	776	775	766	762	770	779
Steers ²	832	827	828	817	814	826	840
Heifers ²	773	773	766	753	744	751	764
Cows ²	624	631	627	621	609	603	600
Bulls ²	878	885	896	893	902	905	897
Calves & Vealers	159	160	160	164	162	157	141
Hogs	205	203	204	202	201	199	196
Barrows & Gilts ³	202	200	200	199	197	195	192
Sows ³	306	308	308	307	310	310	308
Boars ³	213	213	207	205	209	208	205
Sheep	70	72	70	71	74	70	67
Mature Sheep ⁴	67	67	68	67	66	68	66
Lambs & Yrlngs ⁴	71	72	70	71	75	70	67
	Aug	Sep	Oct	Nov	Dec	2008 Average	2007 Average
	<i>Pounds</i>	<i>Pounds</i>	<i>Pounds</i>	<i>Pounds</i>	<i>Pounds</i>	<i>Pounds</i>	<i>Pounds</i>
Cattle	784	790	789	784	785	778	776
Steers ²	850	859	860	856	852	838	830
Heifers ²	774	786	795	794	789	772	764
Cows ²	600	598	597	598	606	609	617
Bulls ²	892	890	866	872	869	888	893
Calves & Vealers	143	146	142	139	142	150	182
Hogs	195	199	201	203	203	201	202
Barrows & Gilts ³	192	195	198	200	200	198	198
Sows ³	306	306	308	308	305	308	308
Boars ³	203	211	211	205	201	208	213
Sheep	67	66	68	68	68	69	69
Mature Sheep ⁴	67	66	66	65	66	67	67
Lambs & Yrlngs ⁴	67	66	68	68	69	69	69

¹ Species totals and classification reported by food inspectors, Inspection Operations, FSIS.

² Included in cattle average dressed weight.

³ Included in hogs average dressed weight.

⁴ Included in sheep average dressed weight.

**Commercial Red Meat Production: Number of Pounds by Month, State,
and United States, 2008 and 2007 Total ¹**

State	Jan	Feb	Mar	Apr	May	Jun	Jul
	<i>Million Pounds</i>	<i>Million Pounds</i>	<i>Million Pounds</i>	<i>Million Pounds</i>	<i>Million Pounds</i>	<i>Million Pounds</i>	<i>Million Pounds</i>
AL	2.3	2.0	2.2	2.4	2.0	2.1	2.2
AK							0.1
AZ	34.0	35.4	33.1	36.8	36.6	34.0	34.9
AR	5.5	5.2	5.5	4.8	5.0	5.8	5.7
CA	148.4	134.4	132.8	142.7	138.7	135.4	133.3
CO	175.5	171.2	165.9	179.9	197.3	196.1	198.3
DE-MD	3.4	3.0	2.8	3.0	3.0	2.9	2.9
FL	8.2	6.7	7.6	8.0	8.9	8.2	9.7
GA	14.2	12.5	13.0	13.0	12.4	12.5	13.4
HI	0.9	0.8	0.9	0.9	0.9	0.9	1.0
ID	16.2	18.1	19.1	18.9	18.2	20.2	20.2
IL	274.4	245.0	251.3	261.8	241.3	238.3	242.2
IN	158.6	134.9	136.3	139.6	127.9	126.2	137.8
IA	655.6	571.7	607.4	612.1	564.9	527.3	568.5
KS	484.1	406.9	429.3	449.5	488.6	436.2	474.6
KY	55.0	45.0	49.5	50.1	44.2	42.2	45.6
LA	0.6	0.7	0.7	0.6	0.5	0.5	0.5
MI	42.5	41.5	44.9	44.1	42.8	44.5	44.4
MN	232.4	203.0	208.6	212.7	206.3	205.3	215.2
MS	1.4	1.3	1.1	1.3	1.1	1.2	1.3
MO	157.9	141.5	149.6	146.0	128.0	126.0	135.5
MT	1.0	1.0	0.9	1.8	1.7	1.7	1.3
NE	618.7	568.4	582.6	622.4	631.0	620.3	650.4
NV	0.1	0.1	0.1	0.1	0.1	0.1	0.1
N ENG ²	1.1	0.9	0.9	1.0	1.1	1.1	1.2
NJ	4.2	3.9	4.2	4.4	3.8	3.5	3.8
NM	0.4	0.4	0.5	0.5	0.4	0.4	0.4
NY	3.0	2.5	2.9	2.9	2.8	3.0	3.3
NC	221.7	212.9	202.7	224.8	200.2	186.1	195.7
ND	2.7	2.3	2.3	2.5	2.5	2.1	2.3
OH	26.4	24.6	24.0	25.8	25.6	26.2	27.4
OK	98.5	89.8	93.4	100.5	91.2	88.1	89.0
OR	5.1	4.4	4.7	5.0	4.5	4.6	4.8
PA	113.7	102.1	104.7	114.6	111.4	105.2	112.5
SC	23.5	21.9	20.7	22.1	21.1	19.7	20.1
SD	105.8	84.1	89.6	90.1	75.3	80.3	77.8
TN	20.7	16.8	17.5	16.9	16.1	15.9	16.2
TX	404.3	383.2	408.3	460.1	490.0	457.4	474.9
UT	42.5	43.5	42.0	40.4	41.1	44.4	48.0
VA	48.9	44.4	46.1	46.1	41.4	36.7	36.7
WA	76.3	66.0	62.7	63.3	66.8	64.9	71.3
WV	0.7	0.5	0.4	0.4	0.3	0.3	0.4
WI	126.9	112.7	116.8	123.7	124.2	121.6	124.6
WY	0.6	0.5	0.4	0.5	0.5	0.5	0.6
US ³	4,417.7	3,967.4	4,089.8	4,298.2	4,222.0	4,050.0	4,250.1
PR	3.1	2.5	2.8	3.6	2.7	2.9	3.0

See footnote(s) at end of table.

--continued

**Commercial Red Meat Production: Number of Pounds by Month, State,
and United States, 2008 and 2007 Total ¹ (continued)**

State	Aug	Sep	Oct	Nov	Dec	2008 Total ³	2007 Total ³
	<i>Million Pounds</i>	<i>Million Pounds</i>	<i>Million Pounds</i>	<i>Million Pounds</i>	<i>Million Pounds</i>	<i>Million Pounds</i>	<i>Million Pounds</i>
AL	1.9	1.8	1.9	1.6	1.7	24.0	27.6
AK	0.1	0.1	0.1	0.1		0.5	0.5
AZ	33.9	33.5	32.6	29.6	33.7	408.3	405.9
AR	5.4	6.1	5.8	3.9	5.7	64.3	58.2
CA	133.2	136.0	148.3	129.4	149.6	1,662.2	1,672.4
CO	180.7	177.8	177.1	149.8	164.3	2,133.9	1,887.3
DE-MD	3.1	3.3	3.2	3.0	3.4	36.9	37.9
FL	9.1	8.6	9.3	7.6	7.7	99.6	86.7
GA	13.7	14.3	14.8	12.2	11.2	157.1	163.4
HI	0.9	0.9	1.0	0.8	0.9	10.8	10.0
ID	20.0	20.2	22.8	18.3	19.3	231.5	179.0
IL	236.4	261.7	279.3	241.1	256.5	3,029.4	2,861.5
IN	131.4	142.1	160.2	138.7	146.2	1,679.8	1,564.3
IA	558.3	596.5	650.5	555.8	599.4	7,067.8	6,597.9
KS	467.0	452.8	462.5	377.0	421.0	5,349.6	6,224.7
KY	44.5	51.9	56.7	49.1	54.5	588.1	563.0
LA	0.5	0.6	0.7	0.6	0.6	7.2	7.5
MI	44.1	44.0	44.3	42.1	45.1	524.1	495.5
MN	206.3	223.1	239.1	210.3	222.3	2,584.6	2,441.9
MS	1.2	1.4	1.6	1.1	1.5	15.5	78.7
MO	123.8	147.3	152.2	135.6	147.2	1,690.8	1,500.2
MT	1.3	1.2	1.6	1.5	1.6	16.6	16.2
NE	624.9	642.8	665.7	574.4	591.3	7,392.8	7,220.2
NV	0.1	0.1	0.1	0.1	0.1	1.3	1.0
N ENG ²	1.1	1.3	1.5	1.3	1.4	13.8	12.8
NJ	3.7	4.3	4.0	3.7	4.6	48.1	52.7
NM	0.5	0.5	0.6	0.6	0.5	5.7	4.9
NY	3.0	3.2	3.7	2.9	3.5	36.7	33.6
NC	195.3	210.0	232.0	207.5	221.8	2,510.6	2,334.0
ND	2.2	2.4	3.0	2.1	2.2	28.5	29.8
OH	26.6	25.0	28.2	23.4	26.4	309.3	289.3
OK	82.6	93.0	103.8	92.5	98.2	1,120.5	1,036.0
OR	4.8	5.1	5.4	4.5	4.8	57.8	56.6
PA	109.2	113.7	123.4	109.9	116.7	1,336.9	1,288.3
SC	19.8	20.9	22.5	19.0	20.5	251.9	254.3
SD	73.7	85.0	99.3	81.5	87.6	1,030.0	1,027.1
TN	17.4	22.7	24.7	19.3	21.1	225.2	217.7
TX	441.6	433.9	453.9	360.0	399.3	5,167.1	4,676.2
UT	46.8	46.3	44.6	38.4	42.3	520.2	475.4
VA	37.1	40.2	43.2	40.6	46.4	507.7	479.6
WA	66.8	73.2	75.1	63.2	65.3	815.0	881.6
WV	0.5	0.8	1.2	0.8	0.9	7.3	6.7
WI	119.6	123.0	127.9	114.2	113.9	1,449.0	1,419.4
WY	0.9	0.5	0.3	0.4	0.6	6.2	6.1
US ³	4,095.2	4,272.9	4,529.3	3,869.5	4,162.8	50,224.6	48,683.8
PR	2.9	3.0	2.9	2.2	3.0	34.6	31.7

¹ Based on packers' dressed weights, excluding farm slaughter. Includes total beef, veal, pork, and lamb and mutton.

² N ENG includes CT, ME, MA, NH, RI, and VT.

³ Totals based on unrounded data and may not equal sum of parts. Puerto Rico is not included in US totals.

**Livestock Slaughter: Number of Head Slaughtered and Average Live Weight
by Species and Month, United States, 2008 and 2007 Total ¹**

Species	Unit	Jan	Feb	Mar
Cattle				
Number				
Fed. Insp.	Thou	2,847.4	2,597.9	2,683.6
Other	Thou	51.9	44.8	44.7
Commercial ³	Thou	2,899.4	2,642.7	2,728.3
Live Weight/Head				
Fed. Insp.	Lbs	1,294	1,287	1,278
Other	Lbs	1,142	1,147	1,148
Commercial	Lbs	1,291	1,285	1,276
Calves				
Number				
Fed. Insp.	Thou	70.4	67.9	69.9
Other	Thou	1.1	1.3	1.1
Commercial ³	Thou	71.5	69.1	71.0
Live Weight/Head				
Fed. Insp.	Lbs	267	270	271
Other	Lbs	414	390	401
Commercial	Lbs	269	272	273
Hogs				
Number				
Fed. Insp.	Thou	10,474.3	9,297.4	9,579.4
Other	Thou	88.4	80.0	81.2
Commercial ³	Thou	10,562.7	9,377.4	9,660.6
Live Weight/Head				
Fed. Insp.	Lbs	273	271	271
Other	Lbs	243	246	242
Commercial	Lbs	273	271	271
Sheep and Lambs				
Number				
Fed. Insp.	Thou	201.6	201.6	219.4
Other	Thou	11.6	10.0	11.3
Commercial ³	Thou	213.2	211.6	230.6
Live Weight/Head				
Fed. Insp.	Lbs	141	144	141
Other	Lbs	92	102	107
Commercial	Lbs	139	142	139
Goats				
Number				
Fed. Insp.	Thou	49.1	44.9	59.0
Other	Thou	12.6	14.9	14.9
Commercial ³	Thou	61.7	59.8	73.9
Live Weight/Head				
Fed. Insp.	Lbs	63	61	62
Other	Lbs	72	69	56
Commercial	Lbs	64	63	61
Bison				
Number				
Fed. Insp.	Thou	4.8	4.9	4.9
Other	Thou	1.7	1.5	1.3
Commercial ³	Thou	6.5	6.4	6.1

See footnote(s) at end of table.

--continued

**Livestock Slaughter: Number of Head Slaughtered and Average Live Weight
by Species and Month, United States, 2008 and 2007 Total ¹ (continued)**

Species	Unit	Apr	May	Jun
Cattle				
Number				
Fed. Insp.	Thou	2,913.6	3,095.0	2,911.7
Other	Thou	47.4	44.6	45.0
Commercial ³	Thou	2,961.1	3,139.6	2,956.6
Live Weight/Head				
Fed. Insp.	Lbs	1,261	1,253	1,263
Other	Lbs	1,144	1,137	1,137
Commercial	Lbs	1,259	1,251	1,261
Calves				
Number				
Fed. Insp.	Thou	72.2	70.0	74.2
Other	Thou	1.1	1.0	1.1
Commercial ³	Thou	73.3	71.0	75.3
Live Weight/Head				
Fed. Insp.	Lbs	276	274	265
Other	Lbs	412	405	397
Commercial	Lbs	278	275	267
Hogs				
Number				
Fed. Insp.	Thou	9,910.5	8,980.5	8,800.6
Other	Thou	85.5	81.6	82.5
Commercial ³	Thou	9,996.0	9,062.1	8,883.1
Live Weight/Head				
Fed. Insp.	Lbs	270	268	266
Other	Lbs	244	235	233
Commercial	Lbs	269	268	266
Sheep and Lambs				
Number				
Fed. Insp.	Thou	207.1	195.1	180.7
Other	Thou	14.1	11.7	11.7
Commercial ³	Thou	221.2	206.8	192.4
Live Weight/Head				
Fed. Insp.	Lbs	141	148	139
Other	Lbs	99	105	104
Commercial	Lbs	138	146	137
Goats				
Number				
Fed. Insp.	Thou	52.0	52.6	53.5
Other	Thou	15.3	16.2	15.7
Commercial ³	Thou	67.3	68.8	69.2
Live Weight/Head				
Fed. Insp.	Lbs	62	62	61
Other	Lbs	81	64	63
Commercial	Lbs	66	62	62
Bison				
Number				
Fed. Insp.	Thou	4.9	4.7	4.8
Other	Thou	1.4	1.2	1.4
Commercial ³	Thou	6.3	5.9	6.1

See footnote(s) at end of table.

--continued

**Livestock Slaughter: Number of Head Slaughtered and Average Live Weight
by Species and Month, United States, 2008 and 2007 Total ¹ (continued)**

Species	Unit	Jul	Aug	Sep	Oct
Cattle					
Number					
Fed. Insp.	Thou	3,017.1	2,865.5	2,841.7	2,933.4
Other	Thou	45.4	42.8	47.7	55.6
Commercial ³	Thou	3,062.5	2,908.3	2,889.4	2,989.1
Live Weight/Head					
Fed. Insp.	Lbs	1,275	1,286	1,300	1,306
Other	Lbs	1,142	1,150	1,143	1,138
Commercial	Lbs	1,273	1,284	1,297	1,303
Calves					
Number					
Fed. Insp.	Thou	86.7	78.1	86.1	93.9
Other	Thou	1.1	1.1	1.3	1.7
Commercial ³	Thou	87.9	79.2	87.4	95.6
Live Weight/Head					
Fed. Insp.	Lbs	241	243	248	241
Other	Lbs	422	425	429	424
Commercial	Lbs	243	245	251	244
Hogs					
Number					
Fed. Insp.	Thou	9,373.1	9,170.4	9,878.1	10,653.5
Other	Thou	89.6	93.3	91.4	92.5
Commercial ³	Thou	9,462.8	9,263.7	9,969.5	10,746.1
Live Weight/Head					
Fed. Insp.	Lbs	263	261	266	270
Other	Lbs	234	238	238	236
Commercial	Lbs	262	261	266	269
Sheep and Lambs					
Number					
Fed. Insp.	Thou	193.1	186.1	206.9	209.4
Other	Thou	14.0	14.2	16.8	15.9
Commercial ³	Thou	207.1	200.2	223.7	225.3
Live Weight/Head					
Fed. Insp.	Lbs	134	134	131	135
Other	Lbs	103	107	105	103
Commercial	Lbs	132	132	129	133
Goats					
Number					
Fed. Insp.	Thou	56.7	58.2	63.2	57.0
Other	Thou	15.0	16.3	19.8	18.1
Commercial ³	Thou	71.7	74.4	83.1	75.1
Live Weight/Head					
Fed. Insp.	Lbs	62	62	61	61
Other	Lbs	65	54	75	71
Commercial	Lbs	62	60	65	64
Bison					
Number					
Fed. Insp.	Thou	5.1	3.8	4.4	4.1
Other	Thou	1.1	1.0	1.0	1.4
Commercial ³	Thou	6.2	4.7	5.5	5.5

See footnote(s) at end of table.

--continued

**Livestock Slaughter: Number of Head Slaughtered and Average Live Weight
by Species and Month, United States, 2008 and 2007 Total ¹ (continued)**

Species	Unit	Nov	Dec	2008 Total ²	2007 Total ²
Cattle					
Number					
Fed. Insp.	Thou	2,475.0	2,623.0	33,805.1	33,720.7
Other	Thou	41.3	48.5	559.8	543.3
Commercial ³	Thou	2,516.3	2,671.5	34,364.9	34,264.1
Live Weight/Head					
Fed. Insp.	Lbs	1,305	1,306	1,284	1,275
Other	Lbs	1,129	1,139	1,141	1,139
Commercial	Lbs	1,302	1,303	1,282	1,273
Calves					
Number					
Fed. Insp.	Thou	79.7	92.8	942.0	744.8
Other	Thou	1.4	1.4	14.5	13.3
Commercial ³	Thou	81.1	94.1	956.6	758.1
Live Weight/Head					
Fed. Insp.	Lbs	237	243	255	304
Other	Lbs	416	415	413	399
Commercial	Lbs	240	245	257	305
Hogs					
Number					
Fed. Insp.	Thou	9,249.5	10,053.4	115,420.7	108,138.2
Other	Thou	73.5	91.5	1,031.2	1,033.4
Commercial ³	Thou	9,323.1	10,144.9	116,451.9	109,171.6
Live Weight/Head					
Fed. Insp.	Lbs	271	271	268	269
Other	Lbs	235	232	238	234
Commercial	Lbs	271	270	268	269
Sheep and Lambs					
Number					
Fed. Insp.	Thou	179.9	212.5	2,393.5	2,528.7
Other	Thou	12.5	18.4	162.1	165.1
Commercial ³	Thou	192.5	230.9	2,555.5	2,693.8
Live Weight/Head					
Fed. Insp.	Lbs	136	137	138	138
Other	Lbs	105	100	103	104
Commercial	Lbs	134	134	136	136
Goats					
Number					
Fed. Insp.	Thou	53.5	70.9	670.7	639.4
Other	Thou	12.7	23.6	195.1	187.9
Commercial ³	Thou	66.2	94.6	865.8	827.3
Live Weight/Head					
Fed. Insp.	Lbs	62	62	62	61
Other	Lbs	77	72	68	56
Commercial	Lbs	65	64	63	60
Bison					
Number					
Fed. Insp.	Thou	4.0	4.5	54.8	50.1
Other	Thou	1.1	1.4	15.3	16.9
Commercial ³	Thou	5.1	5.8	70.1	67.0

¹ Excludes slaughter on farms.

² Totals based on unrounded data.

³ Commercial may not equal the sum of the parts due to rounding.

**Livestock Slaughtered Under Federal Inspection: Number
of Head and Percent by Classification and Month,
United States, 2008 and 2007 Total**

Classification	Months						
	Jan	Feb	Mar	Apr	May	Jun	Jul
	<i>1,000 Head</i>	<i>1,000 Head</i>	<i>1,000 Head</i>	<i>1,000 Head</i>	<i>1,000 Head</i>	<i>1,000 Head</i>	<i>1,000 Head</i>
Cattle							
Steers	1,390.6	1,274.1	1,326.4	1,495.0	1,653.8	1,553.1	1,579.6
Heifers	867.2	818.3	837.4	865.4	878.4	820.0	860.7
All Cows	544.7	465.1	473.0	501.3	509.9	485.3	519.8
Dairy Cows	235.7	214.3	215.1	219.1	194.7	180.9	208.5
Other Cows	309.0	250.8	257.9	282.2	315.2	304.4	311.3
Bulls	45.0	40.5	46.8	52.0	52.9	53.2	56.9
Total ¹	2,847.4	2,597.9	2,683.6	2,913.6	3,095.0	2,911.7	3,017.1
Calves & Vealers	70.4	67.9	69.9	72.2	70.0	74.2	86.7
Hogs							
Barrows & Gilts	10,127.9	8,991.7	9,242.0	9,558.6	8,646.5	8,458.2	9,024.7
Sows	303.9	270.3	298.7	310.2	295.2	305.1	305.2
Boars	42.5	35.5	38.7	41.7	38.9	37.3	43.3
Total ¹	10,474.3	9,297.4	9,579.4	9,910.5	8,980.5	8,800.6	9,373.1
Sheep							
Mature Sheep	9.1	8.6	9.8	10.4	11.4	10.7	10.6
Lambs & Yearlings	192.6	193.0	209.5	196.7	183.7	170.1	182.5
Total ¹	201.6	201.6	219.4	207.1	195.1	180.7	193.1
	Percent of Total						
Cattle							
Steers	48.8	49.0	49.4	51.3	53.4	53.3	52.4
Heifers	30.5	31.5	31.2	29.7	28.4	28.2	28.5
All Cows	19.1	17.9	17.6	17.2	16.5	16.7	17.2
Dairy Cows	8.3	8.2	8.0	7.5	6.3	6.2	6.9
Other Cows	10.9	9.7	9.6	9.7	10.2	10.5	10.3
Bulls	1.6	1.6	1.7	1.8	1.7	1.8	1.9
Total ¹	100.0	100.0	100.0	100.0	100.0	100.0	100.0
Calves & Vealers	100.0	100.0	100.0	100.0	100.0	100.0	100.0
Hogs							
Barrows & Gilts	96.7	96.7	96.5	96.4	96.3	96.1	96.3
Sows	2.9	2.9	3.1	3.1	3.3	3.5	3.3
Boars	0.4	0.4	0.4	0.4	0.4	0.4	0.5
Total ¹	100.0	100.0	100.0	100.0	100.0	100.0	100.0
Sheep							
Mature Sheep	4.5	4.3	4.5	5.0	5.9	5.9	5.5
Lambs & Yearlings	95.5	95.7	95.5	95.0	94.1	94.1	94.5
Total ¹	100.0	100.0	100.0	100.0	100.0	100.0	100.0

See footnote(s) at end of table.

--continued

**Livestock Slaughtered Under Federal Inspection: Number
of Head and Percent by Classification and Month,
United States, 2008 and 2007 Total (continued)**

Classification	Months					2008 Total ¹	2007 Total ¹
	Aug	Sep	Oct	Nov	Dec		
	<i>1,000 Head</i>	<i>1,000 Head</i>	<i>1,000 Head</i>	<i>1,000 Head</i>	<i>1,000 Head</i>	<i>1,000 Head</i>	<i>1,000 Head</i>
Cattle							
Steers	1,449.4	1,421.8	1,397.0	1,136.6	1,271.5	16,949.1	17,285.2
Heifers	836.2	834.9	898.1	777.9	796.4	10,090.9	10,206.8
All Cows	520.9	526.3	583.2	514.1	517.0	6,160.5	5,674.9
Dairy Cows	226.3	223.4	236.2	208.2	228.9	2,591.2	2,496.9
Other Cows	294.5	303.0	346.9	305.9	288.1	3,569.3	3,178.0
Bulls	59.0	58.7	55.1	46.4	38.2	604.6	553.9
Total ¹	2,865.5	2,841.7	2,933.4	2,475.0	2,623.0	33,805.1	33,720.7
Calves & Vealers	78.1	86.1	93.9	79.7	92.8	942.0	744.8
Hogs							
Barrows & Gilts	8,844.6	9,543.7	10,303.6	8,970.0	9,749.3	111,460.7	104,351.7
Sows	286.1	298.5	309.8	247.4	271.5	3,501.8	3,309.2
Boars	39.7	35.9	40.1	32.1	32.5	458.2	477.3
Total ¹	9,170.4	9,878.1	10,653.5	9,249.5	10,053.4	115,420.7	108,138.2
Sheep							
Mature Sheep	10.5	11.4	10.1	8.7	11.1	122.3	115.6
Lambs & Yearlings	175.6	195.6	199.3	171.3	201.4	2,271.1	2,413.1
Total ¹	186.1	206.9	209.4	179.9	212.5	2,393.5	2,528.7
	Percent of Total						
Cattle							
Steers	50.6	50.0	47.6	45.9	48.5	50.1	51.3
Heifers	29.2	29.4	30.6	31.4	30.4	29.9	30.3
All Cows	18.2	18.5	19.9	20.8	19.7	18.2	16.8
Dairy Cows	7.9	7.9	8.1	8.4	8.7	7.7	7.4
Other Cows	10.3	10.7	11.8	12.4	11.0	10.6	9.4
Bulls	2.1	2.1	1.9	1.9	1.5	1.8	1.6
Total ¹	100.0	100.0	100.0	100.0	100.0	100.0	100.0
Calves & Vealers	100.0	100.0	100.0	100.0	100.0	100.0	100.0
Hogs							
Barrows & Gilts	96.4	96.6	96.7	97.0	97.0	96.6	96.5
Sows	3.1	3.0	2.9	2.7	2.7	3.0	3.1
Boars	0.4	0.4	0.4	0.3	0.3	0.4	0.4
Total ¹	100.0	100.0	100.0	100.0	100.0	100.0	100.0
Sheep							
Mature Sheep	5.7	5.5	4.8	4.8	5.2	5.1	4.6
Lambs & Yearlings	94.3	94.5	95.2	95.2	94.8	94.9	95.4
Total ¹	100.0	100.0	100.0	100.0	100.0	100.0	100.0

¹ Totals and percentages based on unrounded data and may not equal sum of classes.

**Cattle Slaughter: Number of Head Federally Inspected by Region,
Classification, and Month, 2008 and 2007 Total ¹**

Standard Federal Regions ²	Jan	Feb	Mar	Apr	May	Jun	Jul
	<i>1,000 Head</i>	<i>1,000 Head</i>	<i>1,000 Head</i>	<i>1,000 Head</i>	<i>1,000 Head</i>	<i>1,000 Head</i>	<i>1,000 Head</i>
1							
Steers	0.5	0.3	0.3	0.4	0.4	0.4	0.4
Heifers	0.2	0.2	0.2	0.1	0.2	0.2	0.2
All Cows							
Dairy Cows							
Other Cows							
Bulls							
Total Cattle ³	1.0	0.8	0.7	0.9	1.0	0.9	1.0
2							
Steers	1.8	1.6	1.6	1.6	1.4	1.2	1.2
Heifers	0.3	0.3	0.3	0.3	0.3	0.3	0.3
All Cows	2.2	2.2	2.3	2.6	2.5	2.4	2.9
Dairy Cows	2.0	1.8	2.0	2.3	2.0	1.9	2.2
Other Cows	0.3	0.4	0.3	0.3	0.5	0.5	0.7
Bulls	0.3	0.3	0.4	0.3	0.3	0.4	0.4
Total Cattle ³	4.7	4.4	4.6	4.9	4.5	4.2	4.8
3							
Steers	36.0	30.3	31.7	36.9	38.2	37.3	38.3
Heifers	7.9	9.6	6.9	8.6	8.8	8.1	6.8
All Cows	41.0	34.2	38.3	40.9	38.0	35.9	42.1
Dairy Cows	32.5	27.2	30.5	32.6	30.2	28.5	33.5
Other Cows	8.5	7.0	7.8	8.3	7.9	7.4	8.6
Bulls	2.0	1.5	1.8	2.4	2.5	2.5	2.2
Total Cattle ³	86.9	75.6	78.7	88.8	87.5	83.7	89.4
4							
Steers	1.5	1.4	1.2	1.3	1.3	1.0	1.2
Heifers	0.5	0.4	0.5	0.5	0.4	0.4	0.4
All Cows	63.8	55.0	55.7	59.2	61.6	60.6	66.0
Dairy Cows	13.4	12.7	11.7	11.5	10.4	10.1	10.9
Other Cows	50.4	42.4	44.1	47.7	51.2	50.5	55.1
Bulls	9.1	8.5	8.8	10.0	9.8	9.2	10.6
Total Cattle ³	74.8	65.3	66.3	70.9	73.2	71.2	78.2
5							
Steers	134.7	136.7	139.6	151.6	159.5	158.7	167.9
Heifers	42.4	40.3	41.9	41.0	45.4	43.3	41.7
All Cows	155.6	126.0	137.7	138.8	139.4	127.4	136.0
Dairy Cows	78.4	67.0	72.1	73.0	67.9	63.0	68.6
Other Cows	77.2	59.0	65.6	65.8	71.4	64.4	67.4
Bulls	7.2	6.6	8.8	9.4	9.6	10.1	11.3
Total Cattle ³	339.9	309.6	328.1	340.9	353.9	339.5	356.8

See footnote(s) at end of table.

--continued

**Cattle Slaughter: Number of Head Federally Inspected by Region,
Classification, and Month, 2008 and 2007 Total ¹ (continued)**

Standard Federal Regions ²	Aug	Sep	Oct	Nov	Dec	2008 Total ³	2007 Total ³
	<i>1,000 Head</i>	<i>1,000 Head</i>	<i>1,000 Head</i>	<i>1,000 Head</i>	<i>1,000 Head</i>	<i>1,000 Head</i>	<i>1,000 Head</i>
1							
Steers	0.4	0.5	0.6	0.5	0.5	5.2	5.5
Heifers	0.1	0.2	0.2	0.3	0.3	2.3	1.7
All Cows							
Dairy Cows							
Other Cows							
Bulls							
Total Cattle ³	0.9	1.1	1.3	1.2	1.1	11.8	11.0
2							
Steers	2.0	2.2	2.1	1.9	2.2	20.8	20.3
Heifers	0.2	0.3	0.4	0.3	0.4	3.6	3.4
All Cows	2.4	2.6	2.7	2.2	2.7	29.8	27.7
Dairy Cows	2.2	2.2	2.1	1.7	2.3	24.7	24.2
Other Cows	0.2	0.5	0.5	0.5	0.3	5.1	3.5
Bulls	0.3	0.4	0.5	0.4	0.5	4.6	3.9
Total Cattle ³	4.9	5.6	5.6	4.8	5.7	58.7	55.3
3							
Steers	33.3	32.9	35.2	33.9	31.9	415.9	445.3
Heifers	7.2	5.5	7.6	7.2	8.4	92.5	78.3
All Cows	45.5	48.1	50.0	42.9	38.8	495.8	424.9
Dairy Cows	36.0	38.1	39.8	34.1	30.9	393.8	335.8
Other Cows	9.5	10.0	10.2	8.8	7.9	102.0	89.2
Bulls	2.1	2.4	2.4	1.7	1.1	24.6	30.7
Total Cattle ³	88.2	88.8	95.1	85.6	80.2	1,028.7	979.2
4							
Steers	1.0	1.3	1.7	1.1	1.6	15.7	13.2
Heifers	0.4	0.5	0.6	0.5	0.5	5.5	4.3
All Cows	63.4	62.9	67.1	55.6	54.0	725.1	714.8
Dairy Cows	11.2	10.6	11.7	10.0	12.7	136.7	134.9
Other Cows	52.3	52.4	55.4	45.6	41.3	588.3	580.0
Bulls	11.3	11.2	11.7	9.6	7.8	117.5	105.1
Total Cattle ³	76.1	75.9	81.1	66.8	63.9	863.7	837.3
5							
Steers	155.4	155.5	154.8	126.8	135.5	1,776.8	1,742.1
Heifers	44.3	46.3	45.6	46.6	45.5	524.3	468.3
All Cows	137.1	141.3	158.7	146.5	141.5	1,686.0	1,631.3
Dairy Cows	70.5	71.4	80.2	76.4	72.9	861.3	870.3
Other Cows	66.6	69.8	78.6	70.1	68.7	824.6	760.9
Bulls	11.6	12.9	11.6	9.7	6.9	115.6	93.9
Total Cattle ³	348.4	356.0	370.7	329.5	329.5	4,102.7	3,935.6

See footnote(s) at end of table.

--continued

**Cattle Slaughter: Number of Head Federally Inspected by Region,
Classification, and Month, 2008 and 2007 Total ¹ (continued)**

Standard Federal Regions ²	Jan	Feb	Mar	Apr	May	Jun	Jul
	<i>1,000 Head</i>	<i>1,000 Head</i>	<i>1,000 Head</i>	<i>1,000 Head</i>	<i>1,000 Head</i>	<i>1,000 Head</i>	<i>1,000 Head</i>
6							
Steers	266.5	264.6	283.9	332.9	359.0	319.5	323.2
Heifers	162.6	153.1	171.1	181.9	191.1	183.9	190.7
All Cows	84.2	70.3	68.6	78.3	88.2	86.6	93.0
Dairy Cows	15.1	16.2	14.3	15.2	14.1	11.3	14.2
Other Cows	69.1	54.1	54.3	63.1	74.1	75.3	78.7
Bulls	11.7	10.6	10.9	12.2	12.0	11.8	12.1
Total Cattle ³	525.0	498.6	534.6	605.2	650.3	601.8	618.9
7							
Steers	677.1	576.6	626.4	687.4	776.6	706.1	733.9
Heifers	480.1	448.2	442.6	470.7	472.2	445.0	465.8
All Cows	71.0	61.0	59.2	65.0	66.5	60.6	61.1
Dairy Cows	1.6	1.6	1.2	1.5	1.2	1.3	1.7
Other Cows	69.4	59.3	58.0	63.4	65.3	59.3	59.4
Bulls	7.1	6.6	7.8	8.0	8.3	9.0	8.9
Total Cattle ³	1,235.3	1,092.4	1,136.0	1,231.0	1,323.6	1,220.7	1,269.7
8							
Steers	134.9	133.6	117.2	142.4	165.5	184.0	173.4
Heifers	120.3	116.7	125.9	119.3	123.4	102.3	112.6
All Cows							
Dairy Cows							
Other Cows							
Bulls							
Total Cattle ³	275.5	269.4	261.0	280.9	309.5	303.9	305.3
9							
Steers	90.5	88.2	84.2	95.4	100.6	94.8	90.6
Heifers	11.7	11.6	12.6	13.3	11.5	11.6	10.1
All Cows	80.6	72.2	68.5	71.1	62.5	62.0	69.6
Dairy Cows	74.2	66.5	63.6	63.5	50.0	47.4	57.4
Other Cows	6.3	5.7	4.9	7.7	12.4	14.7	12.2
Bulls	2.9	2.0	2.5	2.9	3.5	3.1	3.0
Total Cattle ³	185.6	174.0	167.8	182.8	178.0	171.6	173.2
10							
Steers	47.2	40.8	40.2	45.0	51.2	50.0	49.5
Heifers	41.1	37.9	35.4	29.7	25.2	25.0	32.2
All Cows	27.5	26.6	26.7	28.0	32.4	34.4	32.4
Dairy Cows	12.2	14.7	13.8	13.5	13.5	12.5	13.8
Other Cows	15.3	11.9	12.8	14.5	18.9	21.8	18.6
Bulls	2.9	2.7	3.6	4.8	4.9	4.7	5.7
Total Cattle ³	118.7	107.9	105.8	107.5	113.6	114.1	119.7

See footnote(s) at end of table.

--continued

**Cattle Slaughter: Number of Head Federally Inspected by Region,
Classification, and Month, 2008 and 2007 Total ¹ (continued)**

Standard Federal Regions ²	Aug	Sep	Oct	Nov	Dec	2008 Total ³	2007 Total ³
	<i>1,000 Head</i>	<i>1,000 Head</i>	<i>1,000 Head</i>	<i>1,000 Head</i>	<i>1,000 Head</i>	<i>1,000 Head</i>	<i>1,000 Head</i>
6							
Steers	299.4	286.1	290.7	222.6	261.6	3,509.9	3,155.9
Heifers	173.0	173.8	185.2	152.4	153.1	2,072.0	2,004.6
All Cows	86.9	85.1	97.8	82.6	87.7	1,009.4	815.8
Dairy Cows	16.2	14.5	15.5	11.5	18.5	176.7	173.3
Other Cows	70.7	70.6	82.3	71.1	69.2	832.6	642.4
Bulls	11.5	11.2	11.3	9.1	9.4	133.7	121.5
Total Cattle ³	570.7	556.2	585.1	466.8	511.8	6,725.0	6,097.7
7							
Steers	680.0	686.1	647.5	524.1	571.9	7,893.6	8,703.0
Heifers	463.8	435.1	493.3	429.9	450.2	5,497.0	5,897.6
All Cows	58.9	57.9	64.8	57.1	57.8	740.8	727.3
Dairy Cows	2.0	1.5	1.5	1.2	1.3	17.8	14.7
Other Cows	56.9	56.3	63.3	55.9	56.5	723.0	712.6
Bulls	10.2	9.1	7.7	7.4	5.5	95.4	99.3
Total Cattle ³	1,212.9	1,188.1	1,213.3	1,018.5	1,085.4	14,226.9	15,427.1
8							
Steers	158.2	133.7	134.1	108.3	134.8	1,720.1	1,484.7
Heifers	101.7	122.0	114.5	104.5	97.8	1,361.0	1,248.5
All Cows							
Dairy Cows							
Other Cows							
Bulls							
Total Cattle ³	278.2	275.0	269.7	231.5	250.7	3,310.6	2,936.7
9							
Steers	76.3	79.3	86.2	74.6	86.1	1,046.7	1,063.0
Heifers	14.1	12.7	9.9	8.4	11.4	139.0	128.7
All Cows	77.2	78.8	85.6	79.0	84.2	891.3	870.3
Dairy Cows	66.5	64.7	64.5	56.9	70.3	745.6	748.1
Other Cows	10.7	14.1	21.1	22.1	14.0	145.7	122.3
Bulls	3.7	3.6	3.0	2.7	2.5	35.3	42.6
Total Cattle ³	171.3	174.4	184.6	164.7	184.3	2,112.2	2,104.5
10							
Steers	43.6	44.2	44.3	42.8	45.6	544.4	652.2
Heifers	31.3	38.6	40.8	27.8	28.8	393.8	371.4
All Cows	33.7	32.7	37.5	31.0	33.0	375.7	280.3
Dairy Cows	15.1	14.3	14.2	11.7	14.1	163.4	135.1
Other Cows	18.6	18.4	23.4	19.3	18.9	212.4	145.1
Bulls	5.3	5.0	4.3	3.9	2.9	50.7	32.3
Total Cattle ³	113.8	120.5	126.9	105.6	110.3	1,364.6	1,336.2

¹ Missing data are not printed to avoid disclosing individual operations.

² States included in regions are as follows: 1- CT, ME, MA, NH, RI, & VT; 2- NY & NJ; 3- DE-MD, PA, VA, & WV; 4- AL, FL, GA, KY, MS, NC, SC, & TN; 5- IL, IN, MI, MN, OH, & WI; 6- AR, LA, NM, OK, & TX; 7- IA, KS, MO, & NE; 8- CO, MT, ND, SD, UT, & WY; 9- AZ, CA, HI, & NV; 10- AK, ID, OR, & WA.

³ Totals based on unrounded data and may not equal sum of parts.

**Calf Slaughter: Number of Head Federally Inspected by Region
and Month, 2008 and 2007 Total ¹**

Standard Federal Regions ²	Jan	Feb	Mar	Apr	May	Jun	Jul
	<i>1,000 Head</i>	<i>1,000 Head</i>	<i>1,000 Head</i>	<i>1,000 Head</i>	<i>1,000 Head</i>	<i>1,000 Head</i>	<i>1,000 Head</i>
1	0.3	0.2	0.2	0.2	0.2	0.1	0.2
2	23.9	19.7	22.2	22.5	19.3	21.9	28.2
3	14.3	14.1	13.6	14.3	11.6	10.9	12.7
4	0.3	0.3	0.3	0.3	0.3	0.3	0.4
5	14.4	14.3	13.8	16.8	21.0	22.7	22.4
6	1.3	2.3	3.2	2.5	1.9	2.3	2.5
7	0.1		0.1	0.1	0.1	0.1	0.1
8							
9	14.8	15.4	15.3	14.4	14.8	14.9	19.1
10							

See footnote(s) at end of table.

--continued

**Calf Slaughter: Number of Head Federally Inspected by Region
and Month, 2008 and 2007 Total¹ (continued)**

Standard Federal Regions ²	Aug	Sep	Oct	Nov	Dec	2008 Total ³	2007 Total ³
	<i>1,000 Head</i>	<i>1,000 Head</i>	<i>1,000 Head</i>	<i>1,000 Head</i>	<i>1,000 Head</i>	<i>1,000 Head</i>	<i>1,000 Head</i>
1	0.2	0.2	0.3	0.2	0.3	2.5	1.7
2	23.2	26.1	29.4	24.1	26.4	286.9	237.2
3	13.6	15.3	15.8	13.0	14.7	163.8	174.2
4	0.4	0.4	0.3	0.3	0.4	4.2	
5	19.9	22.7	24.1	19.1	22.6	233.8	181.9
6	3.1	3.4	4.5	5.6	5.1	37.9	14.8
7	0.1	0.1	0.1	0.1	0.1	0.8	0.4
8							
9	16.8	16.8	18.6	16.2	22.3	199.5	119.6
10							

¹ Missing data are not printed to avoid disclosing individual operations.

² States included in regions are as follows: 1- CT, ME, MA, NH, RI, & VT; 2- NY & NJ; 3- DE-MD, PA, VA, & WV; 4- AL, FL, GA, KY, MS, NC, SC, & TN; 5- IL, IN, MI, MN, OH, & WI; 6- AR, LA, NM, OK, & TX; 7- IA, KS, MO, & NE; 8- CO, MT, ND, SD, UT, & WY; 9- AZ, CA, HI, & NV; 10- AK, ID, OR, & WA.

³ Totals based on unrounded data and may not equal sum of parts.

**Hog Slaughter: Number of Head Federally Inspected by Region,
Classification, and Month, 2008 and 2007 Total ¹**

Standard Federal Regions ²	Jan	Feb	Mar	Apr	May	Jun	Jul
	<i>1,000 Head</i>	<i>1,000 Head</i>	<i>1,000 Head</i>	<i>1,000 Head</i>	<i>1,000 Head</i>	<i>1,000 Head</i>	<i>1,000 Head</i>
1							
Barrows & Gilts	1.0	0.8	0.8	0.9	1.0	1.3	1.6
Sows							
Boars							
Total Hogs ³	1.1	0.9	0.9	0.9	1.1	1.4	1.7
2							
Barrows & Gilts	11.6	9.6	10.0	9.8	10.5	11.2	11.9
Sows	0.2	0.1	0.1	0.2	0.2	0.1	0.2
Boars	0.1	0.1	0.1	0.1	0.1	0.1	0.1
Total Hogs ³	11.9	9.8	10.2	10.1	10.8	11.5	12.2
3							
Barrows & Gilts	475.8	436.8	445.0	460.2	434.8	404.6	421.6
Sows	2.2	2.3	3.0	2.6	2.3	2.5	2.6
Boars	13.8	10.8	12.5	12.9	10.9	11.0	14.7
Total Hogs ³	491.8	449.9	460.5	475.7	448.0	418.1	439.0
4							
Barrows & Gilts	1,377.8	1,304.5	1,265.9	1,384.2	1,240.5	1,189.7	1,266.7
Sows	83.0	66.4	70.7	69.8	64.2	65.1	67.4
Boars	2.2	1.8	1.9	1.6	1.9	1.6	1.4
Total Hogs ³	1,463.0	1,372.6	1,338.5	1,455.5	1,306.5	1,256.4	1,335.4
5							
Barrows & Gilts	2,677.5	2,338.5	2,358.0	2,452.6	2,233.0	2,242.8	2,349.7
Sows	128.1	114.4	133.1	138.8	127.5	137.1	132.8
Boars	4.1	3.2	3.4	3.3	3.3	3.7	3.4
Total Hogs ³	2,809.7	2,456.1	2,494.5	2,594.7	2,363.8	2,383.6	2,485.9

See footnote(s) at end of table.

--continued

**Hog Slaughter: Number of Head Federally Inspected by Region,
Classification, and Month, 2008 and 2007 Total ¹ (continued)**

Standard Federal Regions ²	Aug	Sep	Oct	Nov	Dec	2008 Total ³	2007 Total ³
	<i>1,000 Head</i>	<i>1,000 Head</i>	<i>1,000 Head</i>	<i>1,000 Head</i>	<i>1,000 Head</i>	<i>1,000 Head</i>	<i>1,000 Head</i>
1							
Barrows & Gilts	1.6	1.4	1.5	1.3	1.6	14.9	13.8
Sows							0.2
Boars							0.1
Total Hogs ³	1.7	1.5	1.5	1.3	1.7	15.5	14.1
2							
Barrows & Gilts	10.8	10.8	11.2	9.3	13.0	129.8	135.4
Sows	0.1	0.1	0.2	0.1	0.1	1.8	1.7
Boars	0.1	0.1	0.1	0.1	0.1	1.4	1.3
Total Hogs ³	11.1	11.1	11.5	9.5	13.2	133.0	138.4
3							
Barrows & Gilts	412.5	441.3	472.2	422.7	513.5	5,340.9	5,188.2
Sows	2.7	2.2	2.2	1.8	2.1	28.6	14.2
Boars	13.6	11.9	12.1	9.7	8.2	142.2	153.8
Total Hogs ³	428.9	455.3	486.5	434.3	523.7	5,511.7	5,356.2
4							
Barrows & Gilts	1,268.7	1,361.0	1,467.2	1,290.3	1,389.4	15,805.9	15,179.0
Sows	69.9	87.3	94.9	74.2	83.1	895.8	882.3
Boars	1.4	1.5	1.5	1.3	1.2	19.3	18.8
Total Hogs ³	1,340.0	1,449.8	1,563.6	1,365.8	1,473.8	16,721.0	16,080.1
5							
Barrows & Gilts	2,286.5	2,494.9	2,707.0	2,369.6	2,534.9	29,045.1	27,260.6
Sows	120.6	119.3	120.5	96.3	104.3	1,472.8	1,405.3
Boars	3.5	3.7	3.8	3.4	3.4	42.1	42.9
Total Hogs ³	2,410.6	2,617.9	2,831.2	2,469.3	2,642.5	30,559.9	28,708.7

See footnote(s) at end of table.

--continued

**Hog Slaughter: Number of Head Federally Inspected by Region,
Classification, and Month, 2008 and 2007 Total ¹ (continued)**

Standard Federal Regions ²	Jan	Feb	Mar	Apr	May	Jun	Jul
	<i>1,000 Head</i>	<i>1,000 Head</i>	<i>1,000 Head</i>	<i>1,000 Head</i>	<i>1,000 Head</i>	<i>1,000 Head</i>	<i>1,000 Head</i>
6							
Barrows & Gilts	476.8	436.5	450.3	484.2	443.9	435.8	448.9
Sows	25.7	23.1	24.3	21.6	21.8	25.8	26.7
Boars	1.6	1.2	1.4	1.1	0.9	0.6	
Total Hogs ³	504.1	460.9	476.1	507.0	466.7	462.3	475.6
7							
Barrows & Gilts	4,342.3	3,837.0	4,053.6	4,086.3	3,691.0	3,553.4	3,903.9
Sows	64.2	63.2	66.7	76.2	78.0	73.5	73.8
Boars	20.7	18.3	19.4	22.6	21.7	20.1	23.5
Total Hogs ³	4,427.1	3,918.6	4,139.6	4,185.1	3,790.7	3,647.0	4,001.2
8							
Barrows & Gilts	504.0	396.0	426.7	435.1	352.9	384.3	370.3
Sows	0.4	0.6	0.5	0.8	1.0	0.8	1.4
Boars							
Total Hogs ³	504.4	396.6	427.2	435.9	353.9	385.2	371.8
9							
Barrows & Gilts	228.5	203.9	202.7	214.4	211.4	207.8	220.8
Sows							
Boars							
Total Hogs ³	228.6	203.9	202.9	214.6	211.5	207.9	220.8
10							
Barrows & Gilts	32.5	28.0	29.0	30.8	27.4	27.2	29.4
Sows	0.1	0.1	0.1	0.1	0.1	0.1	0.1
Boars							
Total Hogs ³	32.6	28.1	29.1	30.9	27.5	27.3	29.5

See footnote(s) at end of table.

--continued

**Hog Slaughter: Number of Head Federally Inspected by Region,
Classification, and Month, 2008 and 2007 Total ¹ (continued)**

Standard Federal Regions ²	Aug	Sep	Oct	Nov	Dec	2008 Total ³	2007 Total ³
	<i>1,000 Head</i>	<i>1,000 Head</i>	<i>1,000 Head</i>	<i>1,000 Head</i>	<i>1,000 Head</i>	<i>1,000 Head</i>	<i>1,000 Head</i>
6							
Barrows & Gilts	419.7	461.2	510.1	456.1	490.8	5,514.5	5,205.7
Sows	24.9	27.6	26.3	20.2	25.7	293.7	270.0
Boars	0.1	0.3	0.9	1.5	1.1	11.0	7.4
Total Hogs ³	444.7	489.2	537.3	477.8	517.7	5,819.2	5,483.1
7							
Barrows & Gilts	3,833.5	4,108.1	4,382.5	3,810.0	4,108.9	47,710.4	43,459.6
Sows	67.0	61.3	65.1	54.3	55.8	799.0	
Boars	20.9	18.4	21.7	15.9	18.4	241.7	
Total Hogs ³	3,921.5	4,187.8	4,469.3	3,880.3	4,183.0	48,751.1	44,424.6
8							
Barrows & Gilts	356.9	406.8	473.4	382.8	414.4	4,903.7	4,946.0
Sows	0.5	0.4	0.5	0.3	0.3	7.5	21.2
Boars						0.1	0.1
Total Hogs ³	357.4	407.2	473.9	383.1	414.8	4,911.3	4,967.4
9							
Barrows & Gilts	227.2	228.8	248.2	202.3	253.3	2,649.3	2,591.0
Sows							
Boars							
Total Hogs ³	227.3	228.9	248.3	202.4	253.4	2,650.6	2,592.1
10							
Barrows & Gilts	27.2	29.4	30.2	25.6	29.5	346.2	372.2
Sows	0.1	0.1	0.1	0.1		1.1	1.0
Boars						0.1	0.2
Total Hogs ³	27.3	29.5	30.3	25.7	29.6	347.4	373.4

¹ Missing data are not printed to avoid disclosing individual operations.

² States included in regions are as follows: 1- CT, ME, MA, NH, RI, & VT; 2- NY & NJ; 3- DE-MD, PA, VA, & WV; 4- AL, FL, GA, KY, MS, NC, SC, & TN; 5- IL, IN, MI, MN, OH, & WI; 6- AR, LA, NM, OK, & TX; 7- IA, KS, MO, & NE; 8- CO, MT, ND, SD, UT, & WY; 9- AZ, CA, HI, & NV; 10- AK, ID, OR, & WA.

³ Totals based on unrounded data and may not equal sum of parts.

**Sheep and Lamb Slaughter: Number of Head Federally Inspected by Region,
Classification, and Month, 2008 and 2007 Total ¹**

Standard Federal Regions ²	Jan	Feb	Mar	Apr	May	Jun	Jul
	<i>1,000 Head</i>	<i>1,000 Head</i>	<i>1,000 Head</i>	<i>1,000 Head</i>	<i>1,000 Head</i>	<i>1,000 Head</i>	<i>1,000 Head</i>
1							
Mature Sheep	0.1	0.1	0.1	0.1	0.1	0.1	0.2
Lambs & Yearlings	1.8	1.2	2.2	2.4	1.7	1.6	1.8
Total Sheep ³	1.9	1.3	2.3	2.5	1.8	1.7	2.0
2							
Mature Sheep	1.0	1.0	1.2	1.4	2.2	1.4	1.6
Lambs & Yearlings	9.9	8.9	14.7	18.2	12.1	11.8	12.5
Total Sheep ³	10.9	9.9	16.0	19.6	14.3	13.2	14.0
3							
Mature Sheep	0.2	0.2	0.3	0.7	0.4	0.5	0.6
Lambs & Yearlings	7.1	6.5	9.3	9.0	8.3	8.0	8.8
Total Sheep ³	7.3	6.7	9.6	9.7	8.6	8.5	9.4
4							
Mature Sheep	0.9	0.8	1.0	1.1	1.2	1.2	1.2
Lambs & Yearlings	1.9	1.8	2.0	2.2	1.9	2.3	2.7
Total Sheep ³	2.8	2.5	2.9	3.3	3.1	3.5	3.9
5							
Mature Sheep	3.1	2.8	3.3	3.3	3.3	3.3	3.3
Lambs & Yearlings	27.8	25.2	29.2	30.8	25.4	25.4	26.6
Total Sheep ³	30.9	28.0	32.4	34.0	28.7	28.7	29.9

See footnote(s) at end of table.

--continued

**Sheep and Lamb Slaughter: Number of Head Federally Inspected by Region,
Classification, and Month, 2008 and 2007 Total ¹ (continued)**

Standard Federal Regions ²	Aug	Sep	Oct	Nov	Dec	2008 Total ³	2007 Total ³
	<i>1,000 Head</i>	<i>1,000 Head</i>	<i>1,000 Head</i>	<i>1,000 Head</i>	<i>1,000 Head</i>	<i>1,000 Head</i>	<i>1,000 Head</i>
1							
Mature Sheep	0.2	0.2	0.2	0.1	0.2	1.6	
Lambs & Yearlings	1.8	2.6	2.4	2.6	3.0	25.1	
Total Sheep ³	1.9	2.7	2.6	2.8	3.2	26.8	
2							
Mature Sheep	1.3	1.4	1.3	1.0	1.7	16.4	16.5
Lambs & Yearlings	11.5	14.4	11.1	10.8	15.1	151.0	137.5
Total Sheep ³	12.9	15.7	12.3	11.8	16.8	167.4	154.0
3							
Mature Sheep	0.8	0.9	0.8	0.6	0.7	6.7	4.6
Lambs & Yearlings	9.1	10.9	8.7	8.0	10.7	104.3	95.2
Total Sheep ³	9.9	11.8	9.4	8.5	11.3	110.9	99.8
4							
Mature Sheep	1.1	1.0	1.0	0.9	1.1	12.4	11.6
Lambs & Yearlings	2.8	3.5	2.7	2.4	3.6	30.0	25.0
Total Sheep ³	3.9	4.6	3.7	3.4	4.7	42.4	36.7
5							
Mature Sheep	3.1	3.5	2.9	2.7	3.6	38.2	39.1
Lambs & Yearlings	25.1	28.3	25.1	21.9	28.4	319.0	329.0
Total Sheep ³	28.1	31.7	28.0	24.7	32.0	357.3	368.1

See footnote(s) at end of table.

--continued

**Sheep and Lamb Slaughter: Number of Head Federally Inspected by Region,
Classification, and Month, 2008 and 2007 Total ¹ (continued)**

Standard Federal Regions ²	Jan	Feb	Mar	Apr	May	Jun	Jul
	<i>1,000 Head</i>	<i>1,000 Head</i>	<i>1,000 Head</i>	<i>1,000 Head</i>	<i>1,000 Head</i>	<i>1,000 Head</i>	<i>1,000 Head</i>
6 Mature Sheep Lambs & Yearlings Total Sheep ³							
7 Mature Sheep Lambs & Yearlings Total Sheep ³	0.3 31.9 32.2	0.2 32.7 33.0	0.4 33.9 34.4	0.3 25.2 25.6	0.6 18.9 19.5	0.5 20.1 20.6	0.5 29.8 30.2
8 Mature Sheep Lambs & Yearlings Total Sheep ³	1.5 85.7 87.2	1.6 90.7 92.4	1.7 90.4 92.1	1.7 83.0 84.7	1.7 86.6 88.3	1.5 69.2 70.7	1.5 69.0 70.6
9 Mature Sheep Lambs & Yearlings Total Sheep ³							
10 Mature Sheep Lambs & Yearlings Total Sheep ³	0.1 1.7 1.9	0.1 2.0 2.1	0.1 2.0 2.0	0.1 1.8 1.9	0.2 2.0 2.2	0.1 2.4 2.5	0.1 2.6 2.7

See footnote(s) at end of table.

--continued

**Sheep and Lamb Slaughter: Number of Head Federally Inspected by Region,
Classification, and Month, 2008 and 2007 Total ¹ (continued)**

Standard Federal Regions ²	Aug	Sep	Oct	Nov	Dec	2008 Total ³	2007 Total ³
	<i>1,000 Head</i>	<i>1,000 Head</i>	<i>1,000 Head</i>	<i>1,000 Head</i>	<i>1,000 Head</i>	<i>1,000 Head</i>	<i>1,000 Head</i>
6							
Mature Sheep							6.3
Lambs & Yearlings							6.2
Total Sheep ³							12.5
7							
Mature Sheep	0.5	0.5	0.5	0.4	0.3	5.1	3.9
Lambs & Yearlings	31.4	35.0	35.4	27.1	33.3	354.7	395.5
Total Sheep ³	31.9	35.5	35.9	27.5	33.6	359.8	399.5
8							
Mature Sheep	1.5	1.5	1.6	1.3	1.8	19.0	20.5
Lambs & Yearlings	66.5	76.3	88.3	75.7	83.0	964.6	1,065.1
Total Sheep ³	68.0	77.9	89.9	77.1	84.8	983.5	1,085.6
9							
Mature Sheep							
Lambs & Yearlings							
Total Sheep ³							
10							
Mature Sheep	0.1	0.3	0.2	0.1	0.2	1.7	2.2
Lambs & Yearlings	2.6	2.4	2.6	1.8	2.0	25.9	27.0
Total Sheep ³	2.7	2.7	2.7	1.9	2.2	27.6	29.2

¹ Missing data are not printed to avoid disclosing individual operations.

² States included in regions are as follows: 1- CT, ME, MA, NH, RI, & VT; 2- NY & NJ; 3- DE-MD, PA, VA, & WV; 4- AL, FL, GA, KY, MS, NC, SC, & TN; 5- IL, IN, MI, MN, OH, & WI; 6- AR, LA, NM, OK, & TX; 7- IA, KS, MO, & NE; 8- CO, MT, ND, SD, UT, & WY; 9- AZ, CA, HI, & NV; 10- AK, ID, OR, & WA.

³ Totals based on unrounded data and may not equal sum of parts.

**Commercial Cattle Slaughter: Number of Head by Month,
State, and United States, 2008 and 2007 Total ^{1 2}**

State	Jan	Feb	Mar	Apr	May	Jun	Jul
	<i>1,000 Head</i>	<i>1,000 Head</i>	<i>1,000 Head</i>	<i>1,000 Head</i>	<i>1,000 Head</i>	<i>1,000 Head</i>	<i>1,000 Head</i>
AL	0.4	0.5	0.5	0.7	0.5	0.6	0.4
AK							0.1
AZ	43.1	44.9	41.7	46.2	46.0	42.4	45.2
AR	1.0	0.9	0.9	0.8	0.8	0.8	0.7
CA	142.1	128.9	125.6	136.1	131.5	128.8	127.5
CO	208.3	201.5	196.5	217.6	242.4	236.0	232.5
DE-MD	3.7	3.2	3.1	3.3	3.4	3.3	3.2
FL							
GA							
HI	1.0	0.8	0.9	1.0	1.0	0.9	1.1
ID	20.8	23.2	24.1	24.0	24.4	28.1	27.3
IL							
IN	4.0	3.0	3.1	3.5	2.7	3.0	3.7
IA							
KS	596.6	500.8	530.1	562.7	615.4	537.9	572.3
KY	2.0	1.6	1.7	1.6	1.5	1.2	1.3
LA	0.6	0.5	0.6	0.6	0.6	0.6	0.5
MI	49.0	47.2	51.9	51.9	49.5	51.3	51.8
MN	71.9	63.1	67.0	69.2	75.2	69.2	75.0
MS	0.1	0.1	0.1	0.1	0.1	0.1	0.1
MO	8.9	7.6	7.6	7.7	7.6	7.2	7.3
MT	1.2	1.2	1.1	2.4	2.1	2.1	1.4
NE	583.6	541.2	550.6	610.3	652.3	633.0	646.2
NV	0.1	0.1	0.1	0.2	0.2	0.1	0.2
N ENG ³	1.3	0.9	0.9	1.0	1.1	1.1	1.2
NJ	2.4	2.5	2.5	2.6	2.4	2.1	2.5
NM	0.5	0.5	0.5	0.5	0.3	0.4	0.4
NY	2.4	2.0	2.3	2.4	2.2	2.2	2.4
NC	19.8	17.9	16.4	19.1	19.1	19.0	21.2
ND	1.2	1.2	1.2	1.3	1.1	1.1	1.0
OH	10.2	9.3	8.5	9.9	10.4	9.9	10.6
OK	2.4	2.2	2.4	2.4	2.6	2.4	2.2
OR	3.0	2.5	2.8	2.9	3.0	3.0	3.3
PA	84.6	73.7	77.0	86.3	84.8	81.0	86.6
SC	13.8	12.9	12.9	13.3	14.2	13.7	13.8
SD							
TN	2.6	2.3	2.3	2.5	2.2	2.2	2.6
TX	526.6	499.2	536.0	606.8	652.0	603.5	620.5
UT	53.0	54.6	52.1	50.1	52.4	56.1	59.4
VA	1.2	1.1	0.9	1.0	0.9	0.7	0.8
WA	96.1	83.3	79.9	81.5	87.1	84.0	90.2
WV	1.0	0.7	0.6	0.6	0.4	0.3	0.4
WI	151.0	132.2	138.4	143.7	144.7	139.1	144.8
WY	0.7	0.6	0.5	0.5	0.6	0.6	0.7
US ⁴	2,899.4	2,642.7	2,728.3	2,961.1	3,139.6	2,956.6	3,062.5
PR	4.3	3.5	3.7	4.6	3.7	3.8	4.1

See footnote(s) at end of table.

--continued

**Commercial Cattle Slaughter: Number of Head by Month,
State, and United States, 2008 and 2007 Total ^{1 2} (continued)**

State	Aug	Sep	Oct	Nov	Dec	2008 Total	2007 Total
	<i>1,000 Head</i>	<i>1,000 Head</i>	<i>1,000 Head</i>	<i>1,000 Head</i>	<i>1,000 Head</i>	<i>1,000 Head</i>	<i>1,000 Head</i>
AL	0.4	0.5	0.6	0.4	0.5	5.9	4.9
AK	0.1	0.1	0.1	0.1		0.6	0.7
AZ	45.9	47.6	46.9	42.3	46.9	539.1	504.1
AR	0.8	1.0	0.9	0.6	1.0	10.1	10.8
CA	125.0	126.4	137.3	122.1	137.1	1,568.3	1,596.7
CO	209.0	205.2	201.1	171.5	187.4	2,509.2	2,209.8
DE-MD	3.4	3.6	3.6	3.3	3.7	40.7	41.9
FL							
GA							306.4
HI	1.0	0.9	1.0	0.9	0.9	11.5	11.1
ID	27.5	27.4	31.0	24.4	25.7	307.9	225.0
IL							
IN	3.5	3.5	4.7	2.8	4.2	41.8	39.2
IA							
KS	558.2	536.4	548.1	448.9	501.0	6,508.3	7,725.9
KY	1.1	1.4	1.9	1.4	2.0	18.6	17.1
LA	0.6	0.7	0.8	0.7	0.6	7.5	7.8
MI	52.0	52.2	52.6	50.4	52.8	612.7	577.8
MN	71.0	74.6	79.4	65.9	66.4	848.0	765.8
MS	0.1	0.1	0.1		0.1	1.0	1.2
MO	7.1	7.7	9.3	5.1	7.9	91.0	87.0
MT	1.4	1.4	2.0	1.9	2.1	20.4	19.4
NE	605.5	600.6	614.2	531.1	543.8	7,112.5	7,071.4
NV	0.2	0.1	0.2	0.1	0.1	1.7	1.3
N ENG ³	1.1	1.4	1.6	1.5	1.5	14.5	13.4
NJ	2.8	3.2	2.8	2.7	3.1	31.7	29.6
NM	0.4	0.5	0.6	0.5	0.6	5.7	7.9
NY	2.2	2.5	3.0	2.3	2.8	28.9	27.6
NC	19.6	18.9	20.7	16.6	16.1	224.3	216.6
ND	1.0	1.1	1.5	0.8	1.1	13.4	12.5
OH	10.3	8.0	9.7	10.0	8.8	115.6	111.3
OK	2.0	2.1	2.4	1.9	2.3	27.3	22.2
OR	3.4	3.7	4.0	3.3	3.1	38.1	32.8
PA	85.2	86.3	92.8	83.3	77.1	998.7	945.6
SC	14.1	13.7	14.1	12.3	12.1	160.9	157.2
SD							
TN	2.4	2.7	3.0	2.4	2.8	30.0	24.3
TX	571.5	557.5	586.6	467.4	512.3	6,739.8	6,111.1
UT	56.6	56.1	54.6	47.4	52.0	644.3	594.1
VA	0.7	1.2	1.2	0.9	0.8	11.3	14.4
WA	84.1	90.8	93.3	79.2	82.8	1,032.1	1,093.7
WV	0.6	1.0	1.8	1.1	1.4	9.9	9.4
WI	142.0	146.7	156.2	143.9	141.0	1,723.7	1,708.4
WY	0.8	0.6	0.3	0.5	0.8	7.2	7.0
US ⁴	2,908.3	2,889.4	2,989.1	2,516.3	2,671.5	34,364.9	34,264.1
PR	4.1	4.0	3.8	2.8	3.3	45.6	44.0

¹ Includes slaughter in federally inspected and in other slaughter plants, but excludes animals slaughtered on farms.

² US totals and yearly totals are based on unrounded data and may not equal sum of parts.

³ N ENG includes CT, ME, MA, NH, RI, and VT.

⁴ States with no data printed are still included in US total. Data not printed to avoid disclosing individual operations. Puerto Rico is not included in US totals.

**Commercial Cattle Slaughter: Total Live Weight by Month,
State, and United States, 2008 and 2007 Total^{1 2}**

State	Jan	Feb	Mar	Apr	May	Jun	Jul
	<i>1,000 Pounds</i>	<i>1,000 Pounds</i>	<i>1,000 Pounds</i>	<i>1,000 Pounds</i>	<i>1,000 Pounds</i>	<i>1,000 Pounds</i>	<i>1,000 Pounds</i>
AL	356	439	499	626	503	567	374
AK							99
AZ	60,173	63,151	58,998	64,708	63,164	58,703	61,689
AR	1,067	964	968	856	778	732	717
CA	182,370	163,116	159,952	174,522	168,229	164,582	159,381
CO	272,887	261,882	252,178	274,276	302,263	302,610	304,328
DE-MD	4,847	4,240	3,958	4,392	4,501	4,255	4,061
FL							
GA							
HI	1,198	943	1,037	1,116	1,115	1,066	1,229
ID	25,221	28,933	30,628	30,298	30,179	34,405	33,427
IL							
IN	4,237	3,199	3,231	3,678	2,881	3,205	3,934
IA							
KS	758,820	630,207	662,513	695,244	758,628	676,959	734,073
KY	1,925	1,510	1,541	1,512	1,420	1,128	1,200
LA	470	438	489	517	472	461	420
MI	67,681	65,581	70,750	69,985	66,885	69,425	69,105
MN	99,937	90,121	94,621	96,655	102,560	94,454	102,975
MS	66	85	80	72	71	63	88
MO	10,551	9,082	9,258	9,200	8,949	8,423	8,775
MT	1,455	1,473	1,258	2,659	2,456	2,423	1,645
NE	780,535	719,554	729,223	784,258	835,500	810,142	840,612
NV	135	148	134	170	179	143	188
N ENG ³	1,342	1,041	969	1,108	1,251	1,214	1,301
NJ	2,960	3,003	3,070	3,012	2,540	2,326	2,775
NM	495	497	512	489	336	457	460
NY	2,868	2,424	2,782	2,873	2,635	2,654	2,780
NC	22,787	20,654	19,059	21,876	22,337	22,282	24,271
ND	1,475	1,455	1,427	1,587	1,423	1,310	1,193
OH	12,006	10,959	9,962	11,722	12,246	11,694	12,504
OK	2,691	2,486	2,750	2,840	2,954	2,702	2,367
OR	3,541	2,991	3,336	3,514	3,516	3,614	3,935
PA	107,425	93,584	97,535	108,890	105,743	100,673	106,434
SC	15,104	14,353	14,592	14,994	16,312	15,066	14,926
SD							
TN	2,276	2,035	1,947	2,120	1,981	1,822	2,153
TX	651,779	611,919	650,234	733,256	785,058	731,819	757,604
UT	67,955	70,022	67,082	64,495	65,405	70,589	76,203
VA	1,261	1,111	828	973	964	710	829
WA	124,128	107,596	102,176	102,949	108,977	105,375	114,792
WV	1,059	712	611	674	515	385	485
WI	203,358	177,991	184,762	191,649	192,485	185,105	192,061
WY	819	709	575	663	745	728	796
US ⁴	3,729,630	3,382,701	3,469,413	3,716,023	3,916,559	3,718,140	3,886,174
PR	4,772	3,873	4,171	5,222	4,059	4,133	4,466

See footnote(s) at end of table.

--continued

**Commercial Cattle Slaughter: Total Live Weight by Month,
State, and United States, 2008 and 2007 Total^{1,2} (continued)**

State	Aug	Sep	Oct	Nov	Dec	2008 Total	2007 Total
	<i>1,000 Pounds</i>	<i>1,000 Pounds</i>	<i>1,000 Pounds</i>	<i>1,000 Pounds</i>	<i>1,000 Pounds</i>	<i>1,000 Pounds</i>	<i>1,000 Pounds</i>
AL	406	468	477	300	412	5,426	4,545
AK	75	76	84	102		670	744
AZ	62,376	62,079	60,258	54,711	61,712	731,723	698,437
AR	778	962	840	531	1,039	10,232	11,040
CA	157,343	160,604	175,281	157,349	176,505	1,999,233	2,053,948
CO	276,240	272,578	270,869	229,188	252,316	3,271,616	2,861,668
DE-MD	4,305	4,545	4,581	4,299	4,783	52,769	55,226
FL							
GA							279,159
HI	1,113	1,062	1,176	973	1,040	13,068	11,640
ID	33,972	33,793	38,334	30,674	32,193	382,057	277,464
IL							
IN	3,704	3,726	5,012	2,979	4,387	44,173	41,198
IA							
KS	721,364	699,877	718,227	586,224	653,605	8,295,741	9,699,986
KY	1,038	1,336	1,743	1,338	1,868	17,558	16,080
LA	487	531	553	473	415	5,726	6,383
MI	69,340	69,207	70,176	67,721	72,444	828,300	779,023
MN	97,716	104,248	109,671	90,425	91,255	1,174,637	1,048,580
MS	49	48	79		39	777	1,008
MO	8,424	9,239	11,035	6,157	9,295	108,386	105,015
MT	1,743	1,586	2,364	2,218	2,379	23,658	23,098
NE	801,691	815,120	840,135	723,541	735,056	9,415,367	9,262,189
NV	158	148	181	136	143	1,862	1,364
N ENG ³	1,221	1,474	1,642	1,531	1,546	15,639	14,353
NJ	3,028	3,558	3,055	3,126	3,533	35,987	35,895
NM	460	480	620	558	570	5,935	7,196
NY	2,633	2,992	3,507	2,751	3,302	34,203	31,136
NC	22,542	21,744	23,885	18,963	18,460	258,859	250,977
ND	1,181	1,306	1,813	981	1,319	16,468	14,749
OH	12,099	9,505	11,704	11,674	10,458	136,532	130,634
OK	2,121	2,261	2,655	2,058	2,499	30,384	24,337
OR	4,078	4,134	4,706	3,877	3,648	44,889	37,923
PA	104,815	106,557	115,904	105,289	97,003	1,249,851	1,176,021
SC	15,147	14,768	15,379	13,370	13,227	177,238	175,759
SD							
TN	2,001	2,160	2,427	2,013	2,408	25,341	21,136
TX	703,806	691,663	729,052	580,715	642,589	8,269,494	7,445,891
UT	74,089	73,442	71,032	61,154	67,498	828,965	760,222
VA	693	1,129	1,255	943	821	11,518	14,940
WA	108,356	118,790	122,309	103,487	107,167	1,326,102	1,429,733
WV	715	1,043	1,892	1,217	1,525	10,833	9,928
WI	186,481	193,115	206,026	188,873	185,389	2,287,295	2,264,507
WY	1,015	666	410	600	911	8,637	8,299
US ⁴	3,723,750	3,737,069	3,882,244	3,265,015	3,468,180	43,894,899	43,483,119
PR	4,511	4,431	4,175	3,026	3,574	50,412	44,264

¹ Includes slaughter in federally inspected and in other slaughter plants, but excludes animals slaughtered on farms.

² US totals and yearly totals are based on unrounded data and may not equal sum of parts.

³ N ENG includes CT, ME, MA, NH, RI, and VT.

⁴ States with no data printed are still included in US total. Data not printed to avoid disclosing individual operations. Puerto Rico is not included in US totals.

**Commercial Cattle Slaughter: Average Live Weight by Month,
State, and United States, 2008 and 2007 Average^{1 2}**

State	Jan	Feb	Mar	Apr	May	Jun	Jul
	<i>Pounds</i>	<i>Pounds</i>	<i>Pounds</i>	<i>Pounds</i>	<i>Pounds</i>	<i>Pounds</i>	<i>Pounds</i>
AL	857	937	934	956	958	987	908
AK							1,040
AZ	1,403	1,413	1,420	1,405	1,377	1,387	1,370
AR	1,049	1,030	1,063	1,021	1,005	962	1,044
CA	1,308	1,288	1,296	1,302	1,298	1,294	1,268
CO	1,311	1,300	1,284	1,261	1,248	1,283	1,310
DE-MD	1,314	1,314	1,297	1,316	1,326	1,304	1,288
FL							
GA							
HI	1,142	1,131	1,096	1,137	1,098	1,177	1,138
ID	1,234	1,273	1,286	1,281	1,252	1,239	1,238
IL							
IN	1,054	1,052	1,056	1,052	1,055	1,056	1,061
IA							
KS	1,272	1,259	1,250	1,236	1,233	1,259	1,283
KY	942	951	929	965	938	939	960
LA	766	819	802	815	737	769	769
MI	1,393	1,396	1,371	1,357	1,356	1,360	1,342
MN	1,402	1,439	1,421	1,408	1,371	1,372	1,380
MS	739	880	915	814	867	723	835
MO	1,198	1,203	1,218	1,195	1,185	1,178	1,204
MT	1,191	1,259	1,174	1,115	1,185	1,165	1,160
NE	1,339	1,332	1,326	1,287	1,283	1,281	1,302
NV	1,106	1,124	1,155	1,007	1,025	1,159	1,124
N ENG ³	1,068	1,113	1,134	1,147	1,145	1,112	1,095
NJ	1,239	1,225	1,237	1,163	1,073	1,100	1,109
NM	1,067	1,073	1,085	1,058	1,057	1,076	1,082
NY	1,193	1,212	1,235	1,200	1,180	1,203	1,191
NC	1,158	1,160	1,168	1,152	1,171	1,176	1,151
ND	1,265	1,228	1,203	1,221	1,264	1,227	1,230
OH	1,191	1,190	1,192	1,190	1,190	1,194	1,184
OK	1,127	1,118	1,148	1,162	1,147	1,116	1,084
OR	1,206	1,233	1,248	1,235	1,218	1,249	1,216
PA	1,281	1,279	1,278	1,272	1,256	1,253	1,240
SC	1,105	1,121	1,142	1,131	1,151	1,107	1,089
SD							
TN	888	920	866	874	906	849	849
TX	1,241	1,229	1,216	1,212	1,207	1,216	1,224
UT	1,286	1,285	1,289	1,290	1,251	1,261	1,287
VA	1,046	1,057	963	1,020	1,030	1,007	1,033
WA	1,297	1,298	1,285	1,270	1,258	1,262	1,280
WV	1,024	1,040	1,017	1,148	1,157	1,257	1,281
WI	1,361	1,362	1,351	1,349	1,345	1,344	1,341
WY	1,144	1,219	1,233	1,242	1,246	1,198	1,210
US ⁴	1,291	1,285	1,276	1,259	1,251	1,261	1,273
PR	1,118	1,099	1,135	1,141	1,102	1,109	1,104

See footnote(s) at end of table.

--continued

**Commercial Cattle Slaughter: Average Live Weight by Month,
State, and United States, 2008 and 2007 Average^{1 2} (continued)**

State	Aug	Sep	Oct	Nov	Dec	2008 Average	2007 Average
	<i>Pounds</i>	<i>Pounds</i>	<i>Pounds</i>	<i>Pounds</i>	<i>Pounds</i>	<i>Pounds</i>	<i>Pounds</i>
AL	953	877	856	837	863	914	936
AK	1,103	1,185	1,030	1,133		1,097	1,109
AZ	1,367	1,312	1,290	1,299	1,321	1,363	1,390
AR	991	1,001	991	967	994	1,012	1,025
CA	1,277	1,288	1,294	1,306	1,306	1,294	1,309
CO	1,322	1,329	1,348	1,337	1,348	1,305	1,296
DE-MD	1,275	1,275	1,290	1,289	1,278	1,297	1,317
FL							
GA							916
HI	1,134	1,159	1,169	1,143	1,100	1,135	1,052
ID	1,251	1,250	1,251	1,274	1,271	1,258	1,252
IL							
IN	1,057	1,058	1,056	1,056	1,056	1,056	1,052
IA							
KS	1,293	1,305	1,311	1,306	1,305	1,275	1,256
KY	952	946	933	931	939	943	938
LA	753	728	716	723	741	759	822
MI	1,340	1,334	1,344	1,354	1,383	1,360	1,357
MN	1,383	1,405	1,389	1,378	1,380	1,393	1,378
MS	722	659	829		774	800	864
MO	1,198	1,206	1,187	1,222	1,186	1,198	1,215
MT	1,234	1,130	1,159	1,140	1,125	1,164	1,192
NE	1,325	1,358	1,369	1,364	1,353	1,325	1,312
NV	1,054	1,011	1,130	1,040	1,179	1,088	1,054
N ENG ³	1,106	1,038	1,033	1,022	1,029	1,079	1,071
NJ	1,088	1,105	1,105	1,152	1,136	1,143	1,220
NM	1,034	1,046	1,052	1,045	1,037	1,059	974
NY	1,200	1,199	1,173	1,196	1,184	1,196	1,149
NC	1,157	1,152	1,159	1,150	1,150	1,159	1,164
ND	1,229	1,208	1,243	1,220	1,179	1,227	1,182
OH	1,182	1,199	1,209	1,175	1,195	1,191	1,181
OK	1,082	1,104	1,091	1,084	1,068	1,112	1,095
OR	1,224	1,161	1,206	1,223	1,228	1,219	1,192
PA	1,240	1,248	1,262	1,275	1,273	1,263	1,252
SC	1,077	1,086	1,094	1,097	1,097	1,108	1,126
SD							
TN	853	833	836	852	871	865	886
TX	1,235	1,244	1,247	1,246	1,258	1,230	1,222
UT	1,311	1,312	1,305	1,294	1,303	1,289	1,282
VA	985	956	1,065	1,012	987	1,016	1,042
WA	1,294	1,313	1,316	1,312	1,299	1,291	1,313
WV	1,282	1,048	1,048	1,069	1,087	1,090	1,054
WI	1,327	1,331	1,333	1,325	1,330	1,341	1,339
WY	1,299	1,202	1,181	1,160	1,147	1,207	1,188
US ⁴	1,284	1,297	1,303	1,302	1,303	1,282	1,273
PR	1,110	1,128	1,115	1,094	1,096	1,114	1,013

¹ Includes slaughter in federally inspected and in other slaughter plants, but excludes animals slaughtered on farms.

² Averages are based on unrounded data.

³ N ENG includes CT, ME, MA, NH, RI, and VT.

⁴ States with no data printed are still included in US total. Data not printed to avoid disclosing individual operations. Puerto Rico is not included in US totals.

**Commercial Calf Slaughter: Number of Head by Month,
State, and United States, 2008 and 2007 Total ^{1 2}**

State	Jan	Feb	Mar	Apr	May	Jun	Jul
	<i>1,000 Head</i>	<i>1,000 Head</i>	<i>1,000 Head</i>	<i>1,000 Head</i>	<i>1,000 Head</i>	<i>1,000 Head</i>	<i>1,000 Head</i>
AL							
AK							
AZ							
AR							
CA	14.9	15.6	15.5	14.5	14.9	15.1	19.3
CO							
DE-MD	0.2	0.2	0.2	0.2	0.2	0.2	0.2
FL		0.1	0.1	0.1	0.1		0.1
GA	0.1	0.1	0.1	0.1	0.1	0.1	0.1
HI							
ID							
IL	2.6	2.6	2.5	3.9	4.7	5.5	6.0
IN							
IA		0.1					
KS							
KY							
LA	0.2	0.3	0.3	0.3	0.3	0.4	0.4
MI	1.8	1.6	2.1	1.8	1.5	1.6	1.5
MN							
MS							
MO	0.1		0.1	0.1	0.1		0.1
MT							
NE							
NV							
N ENG ³	0.3	0.2	0.2	0.2	0.2	0.1	0.2
NJ	6.1	5.5	6.1	6.5	5.6	4.7	5.0
NM		0.7	1.3	1.4	1.4	1.4	1.9
NY	17.8	14.2	16.1	16.0	13.7	17.2	23.2
NC	0.1	0.1	0.1	0.1	0.1	0.1	0.2
ND							
OH	0.1	0.1	0.1	0.1	3.5	4.6	4.8
OK							
OR							
PA	14.0	13.9	13.4	14.0	11.3	10.7	12.4
SC							
SD							
TN	0.1	0.1	0.1	0.1	0.1	0.1	0.1
TX	1.5	1.8	2.1	1.3	0.7	1.1	0.7
UT							
VA							
WA							
WV							
WI							
WY							
US ⁴	71.5	69.1	71.0	73.3	71.0	75.3	87.9
PR	1.2	0.9	0.9	0.9	1.0	0.8	0.6

See footnote(s) at end of table.

--continued

**Commercial Calf Slaughter: Number of Head by Month,
State, and United States, 2008 and 2007 Total ^{1 2} (continued)**

State	Aug	Sep	Oct	Nov	Dec	2008 Total	2007 Total
	<i>1,000 Head</i>	<i>1,000 Head</i>	<i>1,000 Head</i>	<i>1,000 Head</i>	<i>1,000 Head</i>	<i>1,000 Head</i>	<i>1,000 Head</i>
AL							
AK							
AZ						0.1	
AR							
CA	17.0	16.9	18.9	16.5	22.6	201.7	122.0
CO							
DE-MD	0.2	0.3	0.2	0.2	0.2	2.3	2.0
FL	0.1	0.1			0.1	0.6	
GA	0.1	0.1	0.1	0.1	0.1	1.1	1.1
HI							
ID							
IL	4.8	5.9	6.4	5.9	7.8	58.7	38.1
IN							
IA		0.1	0.1	0.1	0.1	0.4	
KS						0.1	
KY		0.1	0.1			0.5	0.7
LA	0.3	0.5	0.6	0.5	0.4	4.5	3.3
MI	1.1	1.2	1.3	1.1	1.3	17.8	23.8
MN						0.1	0.1
MS						0.1	0.1
MO	0.1	0.1	0.1	0.1	0.1	0.8	0.4
MT							
NE							
NV							
N ENG ³	0.2	0.2	0.3	0.2	0.3	2.6	1.8
NJ	4.5	5.4	5.7	4.6	6.0	65.8	80.8
NM	2.2	1.8	2.6	2.6	1.7	19.1	3.3
NY	18.8	20.7	23.7	19.6	20.4	221.5	156.8
NC	0.1	0.2	0.1	0.1	0.2	1.6	1.5
ND							
OH	4.6	4.9	5.4	4.3	5.2	37.6	0.8
OK							
OR							0.1
PA	13.3	15.0	15.5	12.8	14.4	160.8	171.5
SC							
SD							
TN	0.1	0.1	0.1	0.1	0.1	0.9	1.0
TX	1.1	1.7	2.1	3.0	3.5	20.6	13.5
UT						0.1	0.1
VA							0.8
WA							
WV							
WI							
WY							
US ⁴	79.2	87.4	95.6	81.1	94.1	956.6	758.1
PR	0.7	0.7	0.9	0.6	0.7	9.8	10.6

¹ Includes slaughter in federally inspected and in other slaughter plants, but excludes animals slaughtered on farms.

² US totals and yearly totals are based on unrounded data and may not equal sum of parts.

³ N ENG includes CT, ME, MA, NH, RI, and VT.

⁴ States with no data printed are still included in US total. Data not printed to avoid disclosing individual operations. Puerto Rico is not included in US totals.

**Commercial Calf Slaughter: Total Live Weight by Month,
State, and United States, 2008 and 2007 Total ^{1 2}**

State	Jan	Feb	Mar	Apr	May	Jun	Jul
	<i>1,000 Pounds</i>	<i>1,000 Pounds</i>	<i>1,000 Pounds</i>	<i>1,000 Pounds</i>	<i>1,000 Pounds</i>	<i>1,000 Pounds</i>	<i>1,000 Pounds</i>
AL							
AK							
AZ							
AR							
CA	1,750	1,793	1,877	1,760	1,766	1,746	2,276
CO							
DE-MD	50	43	43	51	48	49	62
FL		20	21	22	42		45
GA	33	40	37	31	36	42	50
HI							
ID							
IL	1,092	1,092	1,034	1,266	1,043	1,295	1,438
IN							
IA		23					
KS							
KY							
LA	129	160	143	162	137	176	228
MI	658	630	816	760	600	685	619
MN							
MS							
MO	24		34	26	24		23
MT							
NE							
NV							
N ENG ³	84	67	67	69	71	34	51
NJ	2,510	2,289	2,535	2,726	2,373	1,984	2,064
NM		63	126	142	124	124	168
NY	1,763	1,406	1,766	1,664	1,614	1,961	2,303
NC	65	57	52	65	44	62	73
ND							
OH	19	27	32	32	1,572	1,982	2,147
OK							
OR							
PA	5,457	5,561	5,329	5,760	4,470	4,303	4,556
SC							
SD							
TN	34	31	32	33	28	37	44
TX	920	883	1,173	733	413	482	403
UT							
VA							
WA							
WV							
WI							
WY							
US ⁴	18,983	18,616	19,177	20,133	19,356	19,832	21,032
PR	113	83	99	114	111	108	82

See footnote(s) at end of table.

--continued

**Commercial Calf Slaughter: Total Live Weight by Month,
State, and United States, 2008 and 2007 Total^{1 2} (continued)**

State	Aug	Sep	Oct	Nov	Dec	2008 Total	2007 Total
	<i>1,000 Pounds</i>	<i>1,000 Pounds</i>	<i>1,000 Pounds</i>	<i>1,000 Pounds</i>	<i>1,000 Pounds</i>	<i>1,000 Pounds</i>	<i>1,000 Pounds</i>
AL							
AK							
AZ						27	
AR							
CA	1,982	1,941	2,150	1,861	2,594	23,495	15,960
CO							
DE-MD	55	73	54	54	48	630	572
FL	33	27			19	271	
GA	39	60	48	44	46	507	460
HI							
ID							
IL	1,109	1,584	1,415	1,422	1,868	15,658	16,198
IN							
IA		22	20	27	26	142	
KS						68	
KY		25	28			246	335
LA	161	268	309	265	207	2,345	1,670
MI	456	508	581	451	531	7,295	9,988
MN						22	32
MS						52	38
MO	20	36	22	26	37	306	145
MT							
NE							
NV							
N ENG ³	50	65	72	54	74	759	496
NJ	1,863	2,169	2,357	1,874	2,535	27,279	34,814
NM	191	157	223	234	147	1,699	290
NY	1,857	2,007	2,275	1,873	2,102	22,591	18,864
NC	72	91	73	69	82	807	756
ND							
OH	2,082	2,226	2,426	1,980	2,445	16,971	283
OK							
OR							25
PA	4,536	5,002	5,104	4,293	5,089	59,460	67,285
SC							
SD							
TN	49	35	47	27	37	434	441
TX	377	475	796	776	874	8,305	7,555
UT						21	29
VA							259
WA							
WV							
WI							
WY							
US ⁴	19,148	21,683	23,003	19,171	22,713	242,846	229,576
PR	79	66	81	59	74	1,069	1,043

¹ Includes slaughter in federally inspected and in other slaughter plants, but excludes animals slaughtered on farms.

² US totals and yearly totals are based on unrounded data and may not equal sum of parts.

³ N ENG includes CT, ME, MA, NH, RI, and VT.

⁴ States with no data printed are still included in US total. Data not printed to avoid disclosing individual operations. Puerto Rico is not included in US totals.

**Commercial Calf Slaughter: Average Live Weight by Month,
State, and United States, 2008 and 2007 Average^{1 2}**

State	Jan	Feb	Mar	Apr	May	Jun	Jul
	<i>Pounds</i>	<i>Pounds</i>	<i>Pounds</i>	<i>Pounds</i>	<i>Pounds</i>	<i>Pounds</i>	<i>Pounds</i>
AL							
AK							
AZ							
AR							
CA	118	116	122	123	120	117	119
CO							
DE-MD	241	268	273	275	275	263	271
FL		390	390	446	449		404
GA	432	450	457	460	480	457	445
HI							
ID							
IL	415	428	420	324	222	236	244
IN							
IA		331					
KS							
KY							
LA	519	512	511	529	532	499	524
MI	377	399	389	423	409	431	423
MN							
MS							
MO	379		425	389	376		395
MT							
NE							
NV							
N ENG ³	302	333	327	337	344	275	256
NJ	410	413	419	417	422	421	413
NM		87	94	100	89	87	89
NY	103	103	114	108	122	118	103
NC	518	486	498	487	481	455	488
ND							
OH	348	350	354	350	454	428	448
OK							
OR							
PA	389	401	399	411	395	403	367
SC							
SD							
TN	423	397	457	442	453	473	436
TX	600	492	573	572	570	455	552
UT							
VA							
WA							
WV							
WI							
WY							
US ⁴	269	272	273	278	275	267	243
PR	95	99	116	130	118	130	139

See footnote(s) at end of table.

--continued

**Commercial Calf Slaughter: Average Live Weight by Month,
State, and United States, 2008 and 2007 Average^{1 2} (continued)**

State	Aug	Sep	Oct	Nov	Dec	2008 Average	2007 Average
	<i>Pounds</i>	<i>Pounds</i>	<i>Pounds</i>	<i>Pounds</i>	<i>Pounds</i>	<i>Pounds</i>	<i>Pounds</i>
AL							
AK							
AZ						452	
AR							
CA	118	116	116	114	117	118	131
CO							
DE-MD	269	272	275	281	267	269	287
FL	500	488			318	418	
GA	501	464	452	449	445	457	424
HI							
ID							
IL	235	271	224	247	243	270	426
IN							
IA		333	335	328	328	333	
KS						460	
KY		499	532			515	511
LA	528	522	512	524	524	519	500
MI	424	436	436	422	423	414	423
MN						339	338
MS						509	437
MO	400	424	381	455	409	403	334
MT							
NE							
NV							
N ENG ³	283	305	274	236	245	291	271
NJ	418	402	414	410	421	415	431
NM	87	87	88	93	93	90	88
NY	103	99	99	98	107	106	124
NC	494	488	513	517	535	497	488
ND							
OH	452	458	454	460	473	453	350
OK							
OR							406
PA	342	334	330	337	353	370	393
SC							
SD							
TN	471	451	534	479	479	458	439
TX	354	287	377	258	251	405	561
UT						303	300
VA							325
WA							
WV							
WI							
WY							
US ⁴	245	251	244	240	245	257	305
PR	109	100	90	92	108	110	99

¹ Includes slaughter in federally inspected and in other slaughter plants, but excludes animals slaughtered on farms.

² Averages are based on unrounded data.

³ N ENG includes CT, ME, MA, NH, RI, and VT.

⁴ States with no data printed are still included in US total. Data not printed to avoid disclosing individual operations. Puerto Rico is not included in US totals.

**Commercial Hog Slaughter: Number of Head by Month,
State, and United States, 2008 and 2007 Total ^{1 2}**

State	Jan	Feb	Mar	Apr	May	Jun	Jul
	<i>1,000 Head</i>	<i>1,000 Head</i>	<i>1,000 Head</i>	<i>1,000 Head</i>	<i>1,000 Head</i>	<i>1,000 Head</i>	<i>1,000 Head</i>
AL	8.4	6.9	7.9	8.3	7.1	7.5	8.3
AK	0.1	0.1			0.1		
AZ	0.3	0.1	0.2	0.5	0.3	0.1	0.2
AR	16.6	15.3	16.4	14.6	15.1	17.9	17.3
CA	232.6	208.2	207.6	218.8	216.4	211.9	224.8
CO	0.8	0.7	0.7	0.6	0.6	0.6	0.9
DE-MD	1.5	1.5	1.3	1.0	1.1	1.3	1.4
FL	7.7	7.5	6.8	6.6	7.4	7.8	9.2
GA	11.1	9.9	10.7	9.9	9.0	9.9	9.8
HI	1.5	1.5	1.5	1.6	1.6	1.7	1.7
ID	14.9	12.8	12.8	13.2	12.1	11.2	12.8
IL	1,015.5	890.9	904.5	947.5	830.5	835.2	842.1
IN	763.3	660.1	667.0	691.8	640.7	632.9	698.2
IA	2,974.1	2,606.7	2,765.4	2,805.1	2,604.0	2,444.7	2,691.4
KS							
KY							
LA	1.5	1.6	1.7	1.3	1.1	1.0	1.0
MI	10.2	9.2	10.1	9.0	9.8	11.1	11.5
MN	907.6	789.3	803.2	824.9	772.0	786.7	818.7
MS	6.7	5.8	5.4	5.7	5.2	5.6	6.0
MO	721.8	652.8	692.2	676.5	592.1	597.7	650.9
MT	0.8	0.8	0.7	1.2	1.1	1.3	1.5
NE	720.7	645.7	669.6	691.8	582.1	593.2	649.6
NV							
N ENG ³	1.4	1.1	1.1	1.2	1.3	1.7	2.1
NJ	9.9	8.0	8.4	8.3	8.7	8.9	9.3
NM	0.1	0.1	0.1	0.1	0.1	0.1	0.1
NY	2.2	2.0	2.0	2.0	2.3	2.8	3.1
NC	1,044.9	1,016.7	967.0	1,078.3	966.5	925.4	979.5
ND	10.7	8.4	8.7	9.3	9.8	7.9	9.2
OH	98.9	91.9	91.5	98.0	89.6	93.2	98.0
OK	457.8	417.4	434.4	464.7	422.7	417.1	428.3
OR	16.1	13.8	14.8	15.9	13.7	14.1	14.9
PA	251.6	232.2	235.5	250.1	245.7	233.8	254.3
SC							
SD	490.8	386.4	416.5	423.7	341.5	372.7	358.0
TN	60.8	48.9	51.3	48.4	46.3	46.2	46.6
TX	37.8	36.7	33.3	37.2	37.3	35.3	36.2
UT	5.9	3.3	4.4	5.6	5.4	6.7	6.3
VA	240.7	218.1	225.3	225.8	202.4	184.3	184.3
WA	2.6	2.3	2.2	2.5	2.4	2.8	2.7
WV	0.6	0.5	0.5	0.6	0.5	0.5	0.7
WI	50.4	45.8	49.3	57.1	53.5	58.8	59.4
WY	0.3	0.4	0.3	0.4	0.2	0.2	0.4
US ⁴	10,562.7	9,377.4	9,660.6	9,996.0	9,062.1	8,883.1	9,462.8
PR	3.7	3.1	3.5	4.8	3.6	4.2	4.4

See footnote(s) at end of table.

--continued

**Commercial Hog Slaughter: Number of Head by Month,
State, and United States, 2008 and 2007 Total ^{1 2} (continued)**

State	Aug	Sep	Oct	Nov	Dec	2008 Total	2007 Total
	<i>1,000 Head</i>	<i>1,000 Head</i>	<i>1,000 Head</i>	<i>1,000 Head</i>	<i>1,000 Head</i>	<i>1,000 Head</i>	<i>1,000 Head</i>
AL	7.2	6.5	6.7	5.9	6.0	86.8	98.2
AK	0.1	0.1			0.1	0.7	0.6
AZ	0.1	0.2	0.1	0.1	0.1	2.1	2.9
AR	16.5	18.5	18.0	11.8	17.3	195.4	175.3
CA	231.5	232.7	253.0	207.5	262.1	2,707.0	2,650.7
CO	1.7	1.1	1.0	0.8	0.7	10.3	10.1
DE-MD	1.8	1.8	1.5	1.6	1.8	17.6	17.8
FL	6.9	4.9	6.2	5.7	6.0	82.7	88.4
GA	8.9	9.5	7.3	6.0	6.8	109.0	140.8
HI	1.7	1.6	1.6	1.4	1.8	19.2	21.0
ID	11.4	13.0	14.5	12.3	13.4	154.3	162.1
IL	828.4	931.5	1,002.8	877.0	936.4	10,842.2	10,052.4
IN	670.9	717.2	791.7	678.3	707.9	8,320.0	7,762.1
IA	2,664.4	2,795.8	3,020.2	2,589.0	2,791.4	32,752.1	29,953.6
KS							204.7
KY							2,760.6
LA	1.0	0.9	1.4	1.4	1.8	15.6	17.4
MI	11.8	10.8	11.1	9.4	10.6	124.6	123.3
MN	788.5	847.4	912.3	816.0	878.9	9,945.4	9,526.2
MS	5.6	5.9	7.2	5.6	7.2	72.0	
MO	597.2	694.9	710.9	637.5	687.6	7,912.0	6,928.7
MT	1.5	1.2	1.1	1.1	1.2	13.4	13.8
NE	649.4	686.5	726.8	642.3	692.8	7,950.6	7,428.0
NV							
N ENG ³	2.2	1.9	2.1	1.8	2.1	19.9	18.2
NJ	8.4	8.4	8.9	7.8	11.0	106.1	110.6
NM	0.4	0.3	0.3	0.1	0.1	1.9	1.0
NY	2.9	2.9	3.0	2.0	2.5	29.6	30.9
NC	988.7	1,048.5	1,132.1	1,002.9	1,076.1	12,226.8	11,334.5
ND	9.2	9.8	11.1	8.9	8.3	111.2	129.0
OH	97.1	94.5	101.9	78.5	96.2	1,129.3	1,098.7
OK	400.7	443.0	488.1	436.6	465.1	5,275.9	4,971.1
OR	14.4	15.0	14.4	12.3	14.7	173.9	198.6
PA	243.9	255.8	275.8	236.5	295.8	3,010.9	2,956.9
SC							
SD	343.8	394.0	459.8	371.5	403.3	4,762.0	4,804.3
TN	51.6	67.7	73.7	57.7	62.9	661.9	643.3
TX	34.8	37.9	39.7	34.7	44.3	445.1	423.4
UT	6.3	5.8	5.6	4.8	5.9	65.9	61.8
VA	184.9	199.5	210.7	197.4	227.0	2,500.4	2,398.5
WA	2.4	2.4	2.3	1.9	2.1	28.7	25.8
WV	0.9	1.0	0.9	0.7	0.7	8.1	8.4
WI	55.8	56.0	50.2	39.3	46.1	621.9	558.3
WY	1.2	0.5	0.2	0.2	0.3	4.8	5.0
US ⁴	9,263.7	9,969.5	10,746.1	9,323.1	10,144.9	116,451.9	109,171.6
PR	3.4	4.1	4.4	4.5	7.5	51.1	58.9

¹ Includes slaughter in federally inspected and in other slaughter plants, but excludes animals slaughtered on farms.

² US totals and yearly totals are based on unrounded data and may not equal sum of parts.

³ N ENG includes CT, ME, MA, NH, RI, and VT.

⁴ States with no data printed are still included in US total. Data not printed to avoid disclosing individual operations. Puerto Rico is not included in US totals.

**Commercial Hog Slaughter: Total Live Weight by Month,
State, and United States, 2008 and 2007 Total^{1 2}**

State	Jan	Feb	Mar	Apr	May	Jun	Jul
	<i>1,000 Pounds</i>	<i>1,000 Pounds</i>	<i>1,000 Pounds</i>	<i>1,000 Pounds</i>	<i>1,000 Pounds</i>	<i>1,000 Pounds</i>	<i>1,000 Pounds</i>
AL	3,828	3,020	3,438	3,621	3,146	3,261	3,685
AK	15	16			9		
AZ	44	27	40	109	58	36	28
AR	7,450	7,078	7,474	6,627	6,915	8,244	8,000
CA	56,402	50,946	50,891	53,018	52,008	49,975	52,446
CO	192	177	173	167	155	159	215
DE-MD	408	407	346	242	244	290	323
FL	1,103	1,009	1,041	1,001	959	915	987
GA	2,480	2,237	2,413	2,203	2,033	2,321	2,255
HI	331	339	346	351	369	361	384
ID	3,854	3,331	3,328	3,409	3,061	2,782	3,117
IL	284,784	248,591	253,144	262,564	229,440	229,021	228,500
IN	204,909	174,902	176,839	181,199	166,571	164,029	178,511
IA	808,937	703,419	746,486	752,860	693,990	650,482	702,454
KS							
KY							
LA	315	381	402	269	216	192	168
MI	3,933	3,620	3,927	3,463	3,724	4,090	4,141
MN	238,740	205,771	209,857	213,467	200,086	203,661	210,927
MS	1,922	1,785	1,530	1,773	1,531	1,688	1,742
MO	201,375	180,128	190,982	186,368	162,894	160,647	172,847
MT	236	219	186	355	334	317	349
NE	195,191	173,311	180,005	184,919	154,631	156,799	169,641
NV							
N ENG ³	304	235	229	268	273	342	413
NJ	996	804	779	842	816	861	884
NM	34	33	23	24	14	22	16
NY	411	371	368	389	466	513	552
NC	278,150	267,730	254,872	283,378	250,258	232,521	243,738
ND	2,772	2,189	2,192	2,360	2,520	1,984	2,460
OH	27,160	25,290	25,344	26,624	24,471	25,439	26,430
OK	127,911	116,502	120,886	130,369	118,008	114,563	116,071
OR	4,147	3,576	3,854	4,067	3,458	3,456	3,627
PA	64,738	59,206	59,873	63,736	62,318	58,234	63,641
SC							
SD	126,600	98,838	106,712	107,515	86,993	94,825	90,227
TN	28,771	23,268	24,273	23,309	22,365	22,105	22,322
TX	9,730	9,677	8,435	8,543	8,565	8,291	8,294
UT	975	593	924	1,158	1,151	1,254	1,176
VA	63,803	57,495	59,803	59,647	53,562	47,891	47,688
WA	513	418	421	489	449	510	505
WV	161	137	139	148	121	120	171
WI	22,302	20,426	21,933	25,644	24,700	26,537	26,351
WY	86	101	87	118	70	66	114
US ⁴	2,877,170	2,534,860	2,615,373	2,690,357	2,426,311	2,358,556	2,479,550
PR	713	560	667	965	666	807	788

See footnote(s) at end of table.

--continued

**Commercial Hog Slaughter: Total Live Weight by Month,
State, and United States, 2008 and 2007 Total^{1 2} (continued)**

State	Aug	Sep	Oct	Nov	Dec	2008 Total	2007 Total
	<i>1,000 Pounds</i>	<i>1,000 Pounds</i>	<i>1,000 Pounds</i>	<i>1,000 Pounds</i>	<i>1,000 Pounds</i>	<i>1,000 Pounds</i>	<i>1,000 Pounds</i>
AL	3,159	2,952	2,911	2,611	2,644	38,274	44,162
AK	28	14			26	163	147
AZ	16	42	34	18	30	483	599
AR	7,607	8,425	8,175	5,422	7,859	89,275	79,408
CA	54,581	55,836	61,326	50,608	62,824	650,862	637,254
CO	433	288	265	215	171	2,610	2,580
DE-MD	431	424	370	429	477	4,390	4,352
FL	769	622	936	856	967	11,166	12,794
GA	2,098	2,275	1,850	1,583	1,821	25,569	31,046
HI	398	366	375	300	404	4,323	4,554
ID	2,808	3,264	3,666	3,152	3,388	39,161	41,012
IL	222,702	253,104	275,712	242,694	258,603	2,988,859	2,798,390
IN	170,887	185,057	208,399	181,003	189,826	2,182,132	2,033,934
IA	689,484	737,289	809,486	697,591	751,634	8,744,111	8,073,532
KS							91,513
KY							732,785
LA	181	174	249	244	258	3,048	3,339
MI	4,156	3,921	4,243	3,589	3,809	46,615	45,264
MN	203,081	221,362	239,956	215,608	231,508	2,594,025	2,492,475
MS	1,665	1,911	2,171	1,573	2,142	21,433	
MO	158,183	188,801	194,181	175,685	188,093	2,160,183	1,906,254
MT	342	282	270	271	331	3,492	3,451
NE	168,579	181,569	195,876	174,090	187,144	2,121,754	1,995,460
NV							
N ENG ³	440	428	494	437	427	4,291	3,779
NJ	829	837	847	748	944	10,188	10,798
NM	101	80	79	36	20	481	249
NY	535	542	591	346	391	5,474	5,390
NC	244,238	264,494	293,447	263,960	283,056	3,159,843	2,925,872
ND	2,315	2,467	2,863	2,274	2,112	28,507	32,285
OH	25,629	25,353	27,869	21,735	26,255	307,599	298,064
OK	107,670	121,311	134,808	120,476	127,511	1,456,086	1,350,643
OR	3,482	3,733	3,640	3,156	3,686	43,882	47,264
PA	61,689	65,765	72,006	61,799	75,923	768,928	746,889
SC							
SD	85,823	99,639	118,283	96,635	105,200	1,217,290	1,233,499
TN	24,224	31,643	34,442	26,789	29,298	312,809	304,568
TX	8,119	9,279	10,358	8,365	11,414	109,070	105,173
UT	1,288	1,165	1,106	913	1,079	12,781	11,566
VA	48,242	52,050	56,086	53,083	60,664	660,014	624,870
WA	464	522	518	426	467	5,701	5,250
WV	199	246	223	171	183	2,019	2,138
WI	24,574	24,343	22,055	17,415	19,918	276,198	246,994
WY	317	131	47	65	70	1,274	1,311
US ⁴	2,414,624	2,645,765	2,892,531	2,524,035	2,739,561	31,198,694	29,313,832
PR	629	816	882	852	1,414	9,759	10,106

¹ Includes slaughter in federally inspected and in other slaughter plants, but excludes animals slaughtered on farms.

² US totals and yearly totals are based on unrounded data and may not equal sum of parts.

³ N ENG includes CT, ME, MA, NH, RI, and VT.

⁴ States with no data printed are still included in US total. Data not printed to avoid disclosing individual operations. Puerto Rico is not included in US totals.

**Commercial Hog Slaughter: Average Live Weight by Month,
State, and United States, 2008 and 2007 Average^{1 2}**

State	Jan	Feb	Mar	Apr	May	Jun	Jul
	<i>Pounds</i>	<i>Pounds</i>	<i>Pounds</i>	<i>Pounds</i>	<i>Pounds</i>	<i>Pounds</i>	<i>Pounds</i>
AL	455	437	439	436	445	438	444
AK	241	252			182		
AZ	154	229	216	236	226	260	181
AR	449	462	456	455	458	461	463
CA	243	245	245	243	240	236	233
CO	245	245	258	259	253	256	249
DE-MD	265	269	267	249	225	218	225
FL	144	136	154	152	130	117	107
GA	223	225	226	223	225	235	229
HI	226	225	231	226	224	217	225
ID	260	261	261	259	254	249	245
IL	281	279	280	277	277	274	272
IN	269	265	265	262	260	259	256
IA	272	270	270	269	267	266	261
KS							
KY							
LA	209	238	234	211	196	186	173
MI	385	393	391	387	383	368	361
MN	264	261	262	260	260	259	258
MS	287	306	284	310	295	300	288
MO	279	276	276	276	275	269	266
MT	296	290	264	299	292	251	228
NE	271	269	269	267	266	265	262
NV							
N ENG ³	219	217	208	229	214	206	193
NJ	100	100	93	102	94	97	95
NM	261	258	258	241	249	257	243
NY	186	188	188	200	201	186	178
NC	266	264	264	263	259	251	249
ND	260	259	253	255	258	250	269
OH	275	276	278	273	274	274	270
OK	280	279	278	281	279	275	271
OR	259	260	261	257	254	248	245
PA	258	255	255	255	254	249	251
SC							
SD	258	256	256	254	255	255	252
TN	474	476	475	482	484	479	481
TX	258	264	254	230	230	235	229
UT	166	181	210	208	214	187	188
VA	265	264	266	264	265	260	259
WA	196	184	192	199	186	183	184
WV	271	268	263	263	237	234	233
WI	450	453	452	458	469	459	451
WY	273	274	266	291	300	267	262
US ⁴	273	271	271	269	268	266	262
PR	193	180	190	200	188	194	180

See footnote(s) at end of table.

--continued

**Commercial Hog Slaughter: Average Live Weight by Month,
State, and United States, 2008 and 2007 Average^{1 2} (continued)**

State	Aug	Sep	Oct	Nov	Dec	2008 Average	2007 Average
	<i>Pounds</i>	<i>Pounds</i>	<i>Pounds</i>	<i>Pounds</i>	<i>Pounds</i>	<i>Pounds</i>	<i>Pounds</i>
AL	440	453	438	442	438	442	451
AK	217	227			207	222	234
AZ	257	254	248	275	271	225	206
AR	461	456	456	460	454	457	453
CA	236	240	243	244	240	241	241
CO	253	253	258	260	258	254	255
DE-MD	241	241	254	273	262	250	245
FL	111	126	150	150	161	135	145
GA	235	238	253	264	266	235	220
HI	228	223	231	218	222	225	217
ID	246	253	254	258	253	255	254
IL	269	272	275	277	276	276	279
IN	255	258	263	267	268	262	262
IA	259	264	268	270	269	267	270
KS							449
KY							266
LA	191	201	183	173	140	195	192
MI	352	365	382	383	361	375	368
MN	258	262	264	265	264	261	262
MS	295	327	300	279	300	298	
MO	265	272	273	276	274	273	275
MT	235	236	255	240	271	260	250
NE	260	265	270	271	270	267	269
NV							
N ENG ³	202	225	239	246	200	216	208
NJ	98	99	95	96	86	96	98
NM	251	252	274	272	271	258	253
NY	182	185	198	176	156	185	174
NC	247	252	259	263	263	259	258
ND	252	253	258	255	256	257	250
OH	265	269	274	278	274	273	272
OK	269	274	276	276	274	276	272
OR	243	251	253	257	252	253	239
PA	253	257	261	262	257	256	253
SC							
SD	250	253	257	260	261	256	257
TN	471	469	469	466	467	474	474
TX	233	245	262	241	258	245	249
UT	205	202	199	191	185	195	187
VA	261	261	266	269	267	264	261
WA	192	214	223	221	219	199	204
WV	230	247	244	254	260	249	255
WI	446	441	446	450	440	451	450
WY	258	261	257	263	255	267	264
US ⁴	261	266	269	271	270	268	269
PR	186	197	203	191	189	191	172

¹ Includes slaughter in federally inspected and in other slaughter plants, but excludes animals slaughtered on farms.

² Averages are based on unrounded data.

³ N ENG includes CT, ME, MA, NH, RI, and VT.

⁴ States with no data printed are still included in US total. Data not printed to avoid disclosing individual operations. Puerto Rico is not included in US totals.

**Commercial Sheep and Lamb Slaughter: Number of Head by Month,
State, and United States, 2008 and 2007 Total ^{1 2}**

State	Jan	Feb	Mar	Apr	May	Jun	Jul
	<i>1,000 Head</i>	<i>1,000 Head</i>	<i>1,000 Head</i>	<i>1,000 Head</i>	<i>1,000 Head</i>	<i>1,000 Head</i>	<i>1,000 Head</i>
AL							
AK							
AZ	0.1	0.1	0.1	0.1	0.1		
AR	0.1					0.1	
CA							
CO	84.5	90.2	89.7	82.3	85.9	68.7	68.3
DE-MD	2.7	2.4	3.0	3.6	3.2	3.1	3.7
FL	0.1	0.1	0.2	0.3	0.2	0.2	0.3
GA	0.6	0.3	0.3	0.5	0.4	0.3	0.3
HI							
ID	0.2	0.2	0.2	0.2	0.3	0.6	0.7
IL							
IN	1.9	1.7	2.3	3.2	2.2	2.1	2.6
IA	31.8	32.7	33.9	25.1	19.0	20.3	29.8
KS	0.2	0.1	0.2	0.2	0.3	0.2	0.3
KY	0.8	0.7	0.8	0.8	1.1	1.1	1.2
LA	0.2	0.4	0.3	0.3	0.2	0.3	0.4
MI	17.3	16.0	15.6	15.5	14.8	15.2	17.2
MN	0.4	1.0	1.4	1.1	0.7	1.1	1.4
MS							
MO	0.4	0.3	0.4	0.5	0.4	0.4	0.7
MT	0.3	0.2	0.3	0.3	0.3	0.3	0.3
NE	0.1	0.1		0.1	0.1	0.1	0.2
NV			0.1		0.1	0.1	0.2
N ENG ³	2.1	1.3	2.4	2.9	1.9	1.9	2.1
NJ	9.1	8.4	12.8	15.8	12.2	11.3	12.0
NM	1.3	1.4	1.3	1.4	1.5	1.5	1.2
NY	2.4	2.1	3.9	4.7	2.7	2.5	2.6
NC	0.6	0.5	0.5	0.6	0.5	0.7	0.8
ND	0.1		0.1		0.1	0.1	0.1
OH	0.8	0.7	1.0	1.3	1.2	1.1	1.4
OK	0.1	0.1	0.1	0.1	0.1	0.1	0.1
OR	1.5	1.9	2.0	1.8	2.0	2.0	2.1
PA	3.7	3.6	5.7	5.4	4.4	4.2	4.5
SC							
SD	0.7	0.2	0.2	0.2	0.2	0.3	0.3
TN	1.1	0.9	1.1	1.1	0.9	1.1	1.3
TX	2.9	2.8	2.8	3.1	2.9	2.8	3.1
UT	2.6	2.6	2.8	3.0	2.8	2.4	2.8
VA	1.1	0.9	1.0	1.1	1.0	1.1	1.1
WA	0.7	0.6	0.6	0.6	0.6	0.5	0.5
WV					0.1	0.3	0.4
WI	1.0	0.6	0.9	1.0	0.9	1.0	1.4
WY	0.1	0.1	0.1	0.1	0.1	0.1	0.2
US ⁴	213.2	211.6	230.6	221.2	206.8	192.4	207.1
PR	0.1	0.1			0.1	0.1	0.1

See footnote(s) at end of table.

--continued

**Commercial Sheep and Lamb Slaughter: Number of Head by Month,
State, and United States, 2008 and 2007 Total ^{1 2} (continued)**

State	Aug	Sep	Oct	Nov	Dec	2008 Total	2007 Total
	<i>1,000 Head</i>	<i>1,000 Head</i>	<i>1,000 Head</i>	<i>1,000 Head</i>	<i>1,000 Head</i>	<i>1,000 Head</i>	<i>1,000 Head</i>
AL							0.1
AK							
AZ	0.1	0.1	0.1	0.1	0.1	1.0	
AR	0.1	0.1	0.1			0.6	0.5
CA							
CO	65.4	75.5	87.5	75.0	82.2	955.2	1,047.2
DE-MD	3.9	4.7	3.1	3.0	4.0	40.5	34.1
FL	0.3	0.5	0.3	0.3	0.3	3.2	2.4
GA	0.3	0.3	0.4	0.3	0.3	4.2	5.8
HI							
ID	0.6	0.5	0.5	0.4	0.2	4.6	5.2
IL							
IN	2.5	2.6	2.1	2.0	3.1	28.3	26.4
IA	31.4	34.9	35.3	27.1	32.8	354.2	394.7
KS	0.3	0.3	0.4	0.3	0.3	3.3	2.7
KY	1.1	1.0	1.0	1.0	1.3	12.0	11.5
LA	0.4	0.3	0.3	0.3	0.4	3.8	3.3
MI	16.6	18.1	16.6	13.6	15.8	192.3	195.9
MN	1.2	1.8	1.4	1.3	1.1	13.9	3.3
MS							
MO	0.6	0.7	0.6	0.5	0.6	6.1	5.6
MT	0.4	0.5	0.5	0.4	0.4	4.3	3.5
NE	0.2	0.2	0.1	0.1	0.1	1.3	
NV	0.1	0.1				0.9	1.2
N ENG ³	2.2	3.0	2.9	3.0	3.5	29.3	29.3
NJ	10.7	13.6	10.1	9.9	13.4	139.3	125.5
NM	1.0	1.2	1.2	1.0	1.1	15.1	12.2
NY	2.9	3.0	3.0	2.8	5.5	38.0	40.8
NC	0.9	1.0	0.8	0.7	1.1	8.7	7.3
ND		0.1	0.1	0.1		0.8	0.7
OH	1.7	1.2	1.4	1.5	0.9	14.2	15.3
OK	0.1	0.1	0.2	0.1	0.1	1.3	1.0
OR	2.2	2.3	2.2	1.7	2.1	23.7	25.0
PA	4.8	5.2	4.5	4.0	5.0	54.8	55.0
SC							
SD	0.3	0.3	0.2	0.2	0.2	3.3	12.9
TN	1.2	1.7	1.2	1.2	1.6	14.3	13.1
TX	3.0	6.0	4.8	2.0	4.4	40.6	34.3
UT	3.3	2.8	3.0	2.5	3.2	33.9	34.2
VA	1.2	1.5	1.5	1.3	2.0	14.8	12.7
WA	0.6	0.8	0.9	0.8	1.0	8.1	8.5
WV	0.4	0.6	0.6	0.5	0.5	3.6	0.5
WI	1.3	1.5	1.3	1.2	1.3	13.4	12.5
WY	0.4	0.2	0.1	0.1	0.1	1.7	1.6
US ⁴	200.2	223.7	225.3	192.5	230.9	2,555.5	2,693.8
PR	0.1		0.1	0.1		0.7	0.8

¹ Includes slaughter in federally inspected and in other slaughter plants, but excludes animals slaughtered on farms.

² US totals and yearly totals are based on unrounded data and may not equal sum of parts.

³ N ENG includes CT, ME, MA, NH, RI, and VT.

⁴ States with no data printed are still included in US total. Data not printed to avoid disclosing individual operations. Puerto Rico is not included in US totals.

**Commercial Sheep and Lamb Slaughter: Total Live Weight
by Month, State, and United States, 2008 and 2007 Total^{1 2}**

State	Jan	Feb	Mar	Apr	May	Jun	Jul
	<i>1,000 Pounds</i>	<i>1,000 Pounds</i>	<i>1,000 Pounds</i>	<i>1,000 Pounds</i>	<i>1,000 Pounds</i>	<i>1,000 Pounds</i>	<i>1,000 Pounds</i>
AL							
AK							
AZ	6	8	13	15	10		
AR	7					6	
CA							
CO	12,982	14,014	14,238	13,709	14,381	10,790	10,470
DE-MD	275	243	299	357	309	294	347
FL	7	6	13	19	14	13	19
GA	66	26	28	50	38	27	27
HI							
ID	30	28	25	24	38	76	81
IL							
IN	206	187	249	333	241	227	283
IA	4,908	5,117	5,274	3,963	3,115	2,846	4,174
KS	23	13	23	21	27	22	35
KY	100	94	108	106	135	141	143
LA	16	38	29	21	14	17	23
MI	2,299	2,181	2,061	2,012	1,997	1,912	2,089
MN	54	129	182	160	97	131	171
MS							
MO	43	36	53	60	57	50	74
MT	39	21	24	28	23	30	37
NE	6	10		14	8	17	19
NV			10		18	10	18
N ENG ³	192	141	213	259	195	191	210
NJ	785	717	979	1,223	1,023	985	1,014
NM	186	201	189	204	166	167	133
NY	196	175	266	320	224	222	236
NC	47	46	42	51	46	48	61
ND	9		11		8	6	8
OH	86	77	102	131	122	115	144
OK	11	6	14	12	12	13	10
OR	208	266	277	261	273	269	272
PA	372	359	486	477	424	417	442
SC							
SD	86	17	24	23	19	39	39
TN	81	73	85	84	64	77	96
TX	134	243	317	296	270	201	249
UT	356	366	391	408	384	331	380
VA	108	92	100	98	92	101	110
WA	96	79	88	89	101	98	90
WV					18	44	55
WI	126	85	124	133	125	149	196
WY	17	15	16	22	15	15	27
US ⁴	29,516	30,084	32,059	30,572	29,993	26,240	27,305
PR	3	3			5	4	2

See footnote(s) at end of table.

--continued

**Commercial Sheep and Lamb Slaughter: Total Live Weight
by Month, State, and United States, 2008 and 2007 Total^{1 2} (continued)**

State	Aug	Sep	Oct	Nov	Dec	2008 Total	2007 Total
	<i>1,000 Pounds</i>	<i>1,000 Pounds</i>	<i>1,000 Pounds</i>	<i>1,000 Pounds</i>	<i>1,000 Pounds</i>	<i>1,000 Pounds</i>	<i>1,000 Pounds</i>
AL							8
AK							
AZ	5	11	14	8	7	107	
AR	5	9	11			62	50
CA							
CO	9,855	11,116	13,054	11,503	13,003	149,115	159,279
DE-MD	374	439	295	294	385	3,909	3,443
FL	17	25	15	16	19	184	157
GA	27	27	37	24	22	399	719
HI							
ID	72	60	62	43	26	566	643
IL							
IN	266	277	239	232	343	3,081	2,845
IA	4,397	4,830	4,953	3,820	4,837	52,235	58,627
KS	38	34	44	35	38	354	303
KY	143	121	121	120	155	1,489	1,471
LA	25	21	23	18	22	268	275
MI	2,072	2,261	2,073	1,724	2,011	24,694	25,434
MN	149	224	183	158	132	1,772	414
MS							
MO	65	78	70	50	72	709	648
MT	43	52	55	42	55	448	399
NE	31	25	14	8	10	168	
NV	17	12				112	142
N ENG ³	197	279	265	252	306	2,702	2,877
NJ	896	1,141	836	830	1,130	11,557	10,188
NM	128	154	160	136	150	1,973	1,678
NY	259	249	253	235	434	3,067	3,299
NC	74	79	62	51	87	693	595
ND		13	11	8		88	85
OH	180	138	144	163	96	1,498	1,633
OK	10	11	14	12	7	132	103
OR	293	307	297	225	291	3,239	3,379
PA	492	519	449	395	489	5,320	5,273
SC							
SD	31	36	29	24	28	396	1,645
TN	89	130	102	91	116	1,091	1,010
TX	281	626	455	206	332	3,611	2,883
UT	449	373	405	335	440	4,619	4,691
VA	119	157	147	121	182	1,428	1,267
WA	88	103	120	109	128	1,188	1,206
WV	61	91	94	66	77	515	50
WI	178	188	165	143	171	1,782	1,630
WY	52	22	12	11	19	243	228
US ⁴	26,445	28,846	29,903	25,689	30,876	347,527	365,328
PR	4		4	3		34	39

¹ Includes slaughter in federally inspected and in other slaughter plants, but excludes animals slaughtered on farms.

² US totals and yearly totals are based on unrounded data and may not equal sum of parts.

³ N ENG includes CT, ME, MA, NH, RI, and VT.

⁴ States with no data printed are still included in US total. Data not printed to avoid disclosing individual operations. Puerto Rico is not included in US totals.

**Commercial Sheep and Lamb Slaughter: Average Live Weight
by Month, State, and United States, 2008 and 2007 Average^{1 2}**

State	Jan	Feb	Mar	Apr	May	Jun	Jul
	<i>Pounds</i>	<i>Pounds</i>	<i>Pounds</i>	<i>Pounds</i>	<i>Pounds</i>	<i>Pounds</i>	<i>Pounds</i>
AL							
AK							
AZ	108	104	110	122	126		
AR	124					111	
CA							
CO	154	156	159	167	168	157	153
DE-MD	100	102	98	98	96	93	95
FL	63	59	63	60	57	54	55
GA	110	94	92	108	98	89	80
HI							
ID	128	126	130	127	138	118	117
IL							
IN	110	112	107	105	109	109	107
IA	155	157	156	158	165	140	140
KS	95	110	97	122	104	110	100
KY	123	126	127	127	127	128	117
LA	83	96	86	68	64	64	65
MI	134	136	133	131	135	126	122
MN	120	132	134	147	148	115	122
MS							
MO	115	117	126	129	134	114	108
MT	125	95	85	106	68	109	117
NE	119	145		141	131	144	121
NV			135		158	132	117
N ENG ³	93	108	87	89	100	101	99
NJ	86	85	77	77	84	88	84
NM	148	143	144	143	145	143	134
NY	82	82	69	69	84	87	90
NC	83	84	84	83	86	70	77
ND	85		132		117	106	102
OH	105	106	104	103	105	104	103
OK	97	101	103	113	111	97	92
OR	138	139	142	144	140	135	132
PA	102	100	85	88	97	100	99
SC							
SD	126	114	123	114	115	124	121
TN	77	78	79	76	71	70	76
TX	47	87	113	95	92	73	81
UT	136	140	140	137	139	141	136
VA	98	99	99	89	93	95	97
WA	140	139	159	152	168	181	166
WV					140	138	136
WI	132	133	134	134	133	143	138
WY	132	145	159	156	146	148	149
US ⁴	139	142	139	138	146	137	132
PR	53	44			44	54	42

See footnote(s) at end of table.

--continued

**Commercial Sheep and Lamb Slaughter: Average Live Weight
by Month, State, and United States, 2008 and 2007 Average^{1 2} (continued)**

State	Aug	Sep	Oct	Nov	Dec	2008 Average	2007 Average
	<i>Pounds</i>	<i>Pounds</i>	<i>Pounds</i>	<i>Pounds</i>	<i>Pounds</i>	<i>Pounds</i>	<i>Pounds</i>
AL							124
AK							
AZ	76	90	102	92	83	102	
AR	95	109	118			109	103
CA							
CO	151	147	149	154	158	156	152
DE-MD	97	93	94	97	97	96	101
FL	57	56	58	58	57	58	66
GA	86	87	95	92	79	94	125
HI							
ID	126	115	117	118	130	122	123
IL							
IN	107	107	112	114	112	109	108
IA	140	139	140	141	148	148	149
KS	120	104	111	116	115	109	113
KY	126	124	123	124	123	124	128
LA	64	64	69	68	62	71	83
MI	125	125	125	127	128	129	130
MN	126	125	127	123	117	127	126
MS							
MO	117	113	115	110	117	117	116
MT	116	101	101	98	129	105	114
NE	138	131	144	101	99	130	
NV	121	117				126	123
N ENG ³	90	94	92	84	87	92	98
NJ	84	84	83	84	84	83	81
NM	133	135	139	132	137	140	137
NY	89	84	85	85	79	81	81
NC	80	81	82	78	78	80	81
ND		117	118	121		112	119
OH	106	116	106	105	104	106	107
OK	102	103	92	93	82	99	104
OR	132	134	135	134	136	137	135
PA	103	100	101	100	97	97	96
SC							
SD	123	117	120	121	130	122	127
TN	78	77	82	79	71	76	77
TX	93	104	95	102	75	89	84
UT	137	131	135	132	136	137	138
VA	100	101	100	96	93	97	99
WA	159	131	131	131	134	146	141
WV	142	149	147	142	147	143	106
WI	138	127	128	123	134	133	130
WY	139	137	143	139	146	144	145
US ⁴	132	129	133	134	134	136	136
PR	50		50	52		50	47

¹ Includes slaughter in federally inspected and in other slaughter plants, but excludes animals slaughtered on farms.

² Averages are based on unrounded data.

³ N ENG includes CT, ME, MA, NH, RI, and VT.

⁴ States with no data printed are still included in US total. Data not printed to avoid disclosing individual operations. Puerto Rico is not included in US totals.

**Federally Inspected Plants and Head Slaughtered: Number
by Species, State, and United States, 2008 ¹**

State	Cattle		Calves		Hogs	
	Plants	Head	Plants	Head	Plants	Head
	<i>Number</i>	<i>1,000</i>	<i>Number</i>	<i>1,000</i>	<i>Number</i>	<i>1,000</i>
AL					7	79.8
AK						
AZ	2	535.9	1			
AR	6	4.0			7	188.7
CA	24	1,563.1	14	199.5	14	2,630.6
CO	22	2,503.0			18	6.2
DE-MD	20	40.6	13	2.3	14	17.4
FL			5	0.6	11	82.7
GA			2	1.1	12	38.8
HI	7	11.5			8	19.2
ID	11	300.6			9	149.8
IL			6	58.6	26	10,658.4
IN					10	8,268.8
IA					21	32,728.1
KS	24	6,478.3				
KY	17	9.1	2	0.3		
LA	1	0.1	1	0.1	2	0.6
MI	25	588.9	9	16.8	22	104.2
MN	23	820.6	6		21	9,915.4
MS					3	59.5
MO			12	0.7		
MT	7	4.4			7	1.7
NE	26	7,081.5			19	7,932.3
NV	3	1.7				
N ENG ²	19	11.8	18	2.5	18	15.5
NJ	12	31.6	13	65.8	7	105.8
NM	9	2.9	4	19.1	9	0.8
NY	35	27.1	29	221.2	30	27.2
NC	16	220.4	8	1.3	26	12,150.3
ND					9	107.3
OH	11	53.9	3	36.6	14	1,049.0
OK	6	1.9			7	5,259.8
OR	13	32.0			13	170.5
PA	75	982.1	39	160.7	74	2,996.6
SC	5	158.4				
SD					5	4,750.6
TN	13	25.5	7	0.8	17	660.2
TX	34	6,716.1	13	18.7	24	369.3
UT	10	634.3	1		8	45.6
VA	14	4.3			15	2,496.1
WA	11	1,031.4			7	26.4
WV	6	1.8			6	1.5
WI	15	1,680.0			11	564.1
WY						
US ³	630	33,805.1	251	942.0	618	115,420.7
PR	6	45.6	7	9.8	8	51.1

See footnote(s) at end of table.

--continued

**Federally Inspected Plants and Head Slaughtered: Number
by Species, State, and United States, 2008¹ (continued)**

State	Sheep and Lambs		Goats		Bison	
	Plants	Head	Plants	Head	Plants	Head
	<i>Number</i>	<i>1,000</i>	<i>Number</i>	<i>Number</i>	<i>Number</i>	<i>Number</i>
AL						
AK						
AZ	1	0.1	1	51	1	11
AR	4	0.3				
CA			15	36,135		
CO	19	954.4	18	8,420	11	25,194
DE-MD	18	40.5	16	52,815	4	63
FL	7	3.2	9	26,666		
GA	6	2.4	6	32,141		
HI						
ID	8	3.2	6	42	3	1,099
IL			16	40,968		
IN					1	436
IA	3	352.2	2	2,761	1	91
KS	14	2.0	11	3,700	7	285
KY	16	11.8	15	5,139		
LA	1					
MI	23	189.1	14	2,343	8	269
MN	14	11.5	9	2,211	10	3,854
MS						
MO	32	5.2	25	3,067	11	323
MT	7	1.3			7	1,276
NE	11	0.4	9	48	4	314
NV	3	0.9				
N ENG ²	19	26.8	17	23,564	6	110
NJ	13	139.3	14	240,912		
NM	10	14.7	9	206		
NY	30	28.1	27	26,339		
NC	10	8.5	12	18,949		
ND	7	0.4				
OH	7	0.5	6	102		
OK	5	0.9	5	991		
OR	12	22.6	10	4,087	2	432
PA	57	53.3	43	41,881	11	516
SC						
SD	5	0.8				
TN	11	14.1	10	26,172	4	69
TX	21	5.2	20	41,233	5	2,428
UT	7	26.6	6	88		
VA	16	14.0	12	9,822		
WA			8	326		
WV	6	3.2	3	39		
WI	10	3.2				
WY						
US ³	496	2,393.5	412	670,709	133	54,820
PR	4	0.7	4	94		

¹ US totals are based on unrounded data and may not equal sum of parts.

² N ENG includes CT, ME, MA, NH, RI, and VT.

³ States with no data printed are still included in US total. Data not printed to avoid disclosing individual operations. Puerto Rico is not included in US totals.

**Federally Inspected Plants and Head Slaughtered: Number
by Species, State, and United States, 2007 ¹**

State	Cattle		Calves		Hogs	
	Plants	Head	Plants	Head	Plants	Head
	<i>Number</i>	<i>1,000</i>	<i>Number</i>	<i>1,000</i>	<i>Number</i>	<i>1,000</i>
AL					7	91.0
AK	3	0.7			3	0.6
AZ	3	501.1			2	0.4
AR	7	4.9			7	166.9
CA	21	1,591.1	12	119.5	15	2,570.3
CO	20	2,204.2			16	6.2
DE-MD	19	41.8	14	2.0	15	17.6
FL					13	88.4
GA	10	298.7	3	1.0	12	61.9
HI	7	11.1			6	21.0
ID	11	216.6			9	155.7
IL			7	38.1	26	9,871.2
IN					8	7,716.1
IA					21	29,932.6
KS	22	7,693.5			15	176.5
KY	18	8.2			20	2,752.3
LA	1	0.1	1	0.1	2	1.0
MI	26	554.0	12	22.8	22	103.0
MN	22	738.4	6		21	9,501.5
MS						
MO	39	59.7	9	0.3	39	6,905.3
MT	8	4.7	1		8	2.1
NE	26	7,041.0	1		19	7,410.2
NV	3	1.3				
N ENG ²	16	11.0	15	1.7	16	14.1
NJ	11	29.5	12	80.8	7	110.3
NM	7	6.3	4	3.3	7	0.5
NY	34	25.8	26	156.4	29	28.1
NC	17	212.8	8	1.3	25	11,252.2
ND	11	3.9			11	125.2
OH	11	49.9	3		14	1,019.0
OK	5	1.0			6	4,958.3
OR	13	25.7	1		13	193.6
PA	77	929.4	38	171.5	78	2,943.0
SC	5	155.2				
SD					5	4,793.3
TN	13	20.1	9	0.9	17	641.8
TX	36	6,085.4	10	11.4	25	356.5
UT	10	584.5			8	40.5
VA	15	6.2	10	0.8	15	2,394.0
WA	11	1,093.1			9	23.4
WV	6	1.8			6	1.6
WI	12	1,666.6			8	498.0
WY						
US ³	626	33,720.7	232	744.8	618	108,138.2
PR	6	44.0	7	10.6	8	58.9

See footnote(s) at end of table.

--continued

**Federally Inspected Plants and Head Slaughtered: Number
by Species, State, and United States, 2007¹ (continued)**

State	Sheep and Lambs		Goats		Bison	
	Plants	Head	Plants	Head	Plants	Head
	<i>Number</i>	<i>1,000</i>	<i>Number</i>	<i>Number</i>		
AL						
AK	3	0.1	3	33	3	13
AZ			2	55	1	20
AR	5	0.3				
CA			12	32,423		
CO	17	1,046.5	15	7,294	10	26,680
DE-MD	17	34.1	15	53,736	3	61
FL	9	2.4	8	22,081		
GA			8	30,572		
HI						
ID	8	3.1	5	56	4	871
IL			16	41,602	3	58
IN					1	399
IA	4	392.7	2	2,483	1	54
KS	12	1.4	11	2,949	6	247
KY	14	11.3	14	5,180		
LA						
MI	23	192.7	16	1,051	9	212
MN	13	1.7	8	114	11	2,413
MS						
MO	33	4.9	27	3,889	12	212
MT	8	0.9	4	14	7	491
NE			8	65	5	873
NV	3	1.2				
N ENG ²			15	21,731	5	90
NJ	13	125.5	13	237,562		
NM	9	8.7	8	98		
NY	30	28.5	24	29,051		
NC	11	7.2	12	17,458		
ND	8	0.2				
OH	7	0.4	8	144		
OK	5	0.6				
OR	11	22.6	8	3,985	2	517
PA	59	53.7	43	30,991	9	416
SC						
SD	4	10.5			2	387
TN	11	13.0	11	26,832	4	17
TX	19	3.0	21	39,091	4	2,982
UT	6	27.4			1	217
VA	15	11.9	12	7,043	2	24
WA	8	3.4	7	1,246		
WV	4	0.2				
WI	7	3.2	5	180		
WY						
US ³	480	2,528.7	398	639,395	132	50,100
PR	5	0.8	4	57		

¹ US totals are based on unrounded data and may not equal sum of parts.

² N ENG includes CT, ME, MA, NH, RI, and VT.

³ States with no data printed are still included in US total. Data not printed to avoid disclosing individual operations. Puerto Rico is not included in US totals.

**Cattle: Number of Federally Inspected Plants and Head Slaughtered,
by Size Group, United States, 2008**

Size Group	Plants	Head	Size Group	Plants	Head
	<i>Number</i>	<i>1,000</i>		<i>Number</i>	<i>1,000</i>
1 - 999	454	162.3	300,000 - 499,999	8	2,891.5
1,000 - 9,999	92	236.7	500,000 - 999,999	12	6,991.7
10,000 - 49,999	21	469.3	1,000,000 +	14	18,760.9
50,000 - 99,999	11	763.0			
100,000 - 199,999	9	1,338.0	Total ¹	630	33,805.1
200,000 - 299,999	9	2,191.8			

¹ Total may not add due to rounding.

**Calves: Number of Federally Inspected Plants and Head Slaughtered,
by Size Group, United States, 2008**

Size Group	Plants	Head	Size Group	Plants	Head
	<i>Number</i>	<i>1,000</i>		<i>Number</i>	<i>1,000</i>
1 - 99	179	2.7	25,000 - 49,999	7	253.0
100 - 999	44	15.4	50,000 +	6	522.5
1,000 - 9,999	8	43.5			
10,000 - 24,999	7	104.8	Total ¹	251	942.0

¹ Total may not add due to rounding.

**Hogs: Number of Federally Inspected Plants and Head Slaughtered,
by Size Group, United States, 2008**

Size Group	Plants	Head	Size Group	Plants	Head
	<i>Number</i>	<i>1,000</i>		<i>Number</i>	<i>1,000</i>
1 - 999	385	129.3	1,000,000 - 1,999,999	3	4,921.1
1,000 - 9,999	116	321.0	2,000,000 - 2,999,999	11	28,507.2
10,000 - 99,999	63	2,577.7	3,000,000 - 3,999,999	2	7,049.2
100,000 - 249,999	10	1,493.0	4,000,000 +	12	63,102.0
250,000 - 499,999	12	4,209.1			
500,000 - 999,999	4	3,111.1	Total ¹	618	115,420.7

¹ Total may not add due to rounding.

**Sheep and Lambs: Number of Federally Inspected Plants and Head Slaughtered,
by Size Group, United States, 2008**

Size Group	Plants	Head	Size Group	Plants	Head
	<i>Number</i>	<i>1,000</i>		<i>Number</i>	<i>1,000</i>
1 - 999	411	53.5	100,000 - 249,999	2	273.9
1,000 - 9,999	65	204.7	250,000+	4	1,567.3
10,000 - 24,999	11	172.9			
25,000 - 99,999	3	121.1	Total ¹	496	2,393.5

¹ Total may not add due to rounding.

**Cattle: Number of Federally Inspected Plants and Head Slaughtered,
by Size Group, United States, 2007**

Size Group	Plants	Head	Size Group	Plants	Head
	<i>Number</i>	<i>1,000</i>		<i>Number</i>	<i>1,000</i>
1 - 999	454	150.8	300,000 - 499,999	7	2,734.9
1,000 - 9,999	91	244.5	500,000 - 999,999	12	7,303.6
10,000 - 49,999	18	398.2	1,000,000 +	14	18,325.1
50,000 - 99,999	8	511.2			
100,000 - 199,999	13	1,845.3	Total ¹	626	33,720.7
200,000 - 299,999	9	2,207.1			

¹ Total may not add due to rounding.

**Calves: Number of Federally Inspected Plants and Head Slaughtered,
by Size Group, United States, 2007**

Size Group	Plants	Head	Size Group	Plants	Head
	<i>Number</i>	<i>1,000</i>		<i>Number</i>	<i>1,000</i>
1 - 99	172	2.6	25,000 - 49,999	4	134.5
100 - 999	32	12.1	50,000 +	6	469.1
1,000 - 9,999	14	56.4			
10,000 - 24,999	4	70.2	Total ¹	232	744.8

¹ Total may not add due to rounding.

**Hogs: Number of Federally Inspected Plants and Head Slaughtered,
by Size Group, United States, 2007**

Size Group	Plants	Head	Size Group	Plants	Head
	<i>Number</i>	<i>1,000</i>		<i>Number</i>	<i>1,000</i>
1 - 999	385	124.9	1,000,000 - 1,999,999	2	3,784.8
1,000 - 9,999	116	313.6	2,000,000 - 2,999,999	12	29,007.7
10,000 - 99,999	64	2,730.7	3,000,000 - 3,999,999	2	7,445.5
100,000 - 249,999	9	1,503.0	4,000,000 +	11	55,265.7
250,000 - 499,999	12	4,077.4			
500,000 - 999,999	5	3,884.9	Total ¹	618	108,138.2

¹ Total may not add due to rounding.

**Sheep and Lambs: Number of Federally Inspected Plants and Head Slaughtered,
by Size Group, United States, 2007**

Size Group	Plants	Head	Size Group	Plants	Head
	<i>Number</i>	<i>1,000</i>		<i>Number</i>	<i>1,000</i>
1 - 999	400	47.5	100,000 - 249,999	2	299.8
1,000 - 9,999	60	179.0	250,000+	4	1,719.8
10,000 - 24,999	11	169.1			
25,000 - 99,999	3	113.5	Total ¹	480	2,528.7

¹ Total may not add due to rounding.

**Livestock Slaughter Plants: Number by Type of Inspection,
State, and United States, January 1, 2008-09¹**

State	Under Federal Inspection		Other		Total	
	2008	2009	2008	2009	2008	2009
	<i>Number</i>	<i>Number</i>	<i>Number</i>	<i>Number</i>	<i>Number</i>	<i>Number</i>
AL	6	7	33	33	39	40
AK	3	3	0	0	3	3
AZ	2	2	11	10	13	12
AR	9	9	59	23	68	32
CA	31	31	38	43	69	74
CO	23	24	20	20	43	44
DE-MD	20	21	3	3	23	24
FL	21	21	0	0	21	21
GA	15	15	60	60	75	75
HI	10	9	0	0	10	9
ID	12	12	21	19	33	31
IL	35	35	68	59	103	94
IN	8	10	84	83	92	93
IA	25	25	116	116	141	141
KS	25	25	80	71	105	96
KY	19	21	28	27	47	48
LA	2	1	42	38	44	39
MI	30	30	35	35	65	65
MN	26	25	104	105	130	130
MS	5	5	17	16	22	21
MO	42	41	164	153	206	194
MT	8	7	145	152	153	159
NE	31	31	98	90	129	121
NV	3	3	0	0	3	3
N ENG ²	18	20	16	16	34	36
NJ	16	16	1	1	17	17
NM	9	10	6	6	15	16
NY	36	36	31	29	67	65
NC	31	31	29	29	60	60
ND	11	10	50	51	61	61
OH	17	18	128	118	145	136
OK	8	8	64	64	72	72
OR	13	12	17	17	30	29
PA	91	91	154	154	245	245
SC	9	9	20	20	29	29
SD	7	7	87	86	94	93
TN	18	18	8	8	26	26
TX	47	49	74	62	121	111
UT	10	11	21	21	31	32
VA	19	20	32	32	51	52
WA	13	13	8	8	21	21
WV	6	6	21	23	27	29
WI	17	20	99	103	116	123
WY	0	0	27	26	27	26
US ³	807	818	2,119	2,030	2,926	2,848
PR	8	8	0	0	8	8

¹ Data includes 'Temporarily Closed' plants.

² N ENG includes CT, ME, MA, NH, RI, and VT.

³ Puerto Rico is not included in US totals.

**Annual Federally Inspected Slaughter: Number of Head
by Species, Class, and Week, United States, 2008 and 2007 Total ¹**

Week Ending	Total Cattle	Steers	Heifers	Dairy Cows	Other Cows	Bulls	Total Calves
	<i>1,000 Head</i>	<i>1,000 Head</i>	<i>1,000 Head</i>	<i>1,000 Head</i>	<i>1,000 Head</i>	<i>1,000 Head</i>	<i>1,000 Head</i>
Jan 5, 2008	534.4	268.4	160.3	43.1	55.5	7.0	13.3
Jan 12	634.1	304.3	187.8	56.0	75.0	11.0	16.4
Jan 19	653.0	305.8	202.5	57.6	75.8	11.3	14.9
Jan 26	635.8	312.1	199.2	50.5	64.1	9.9	16.0
Feb 2	611.9	307.1	183.1	48.8	63.7	9.3	16.2
Feb 9	616.3	301.4	197.3	49.8	59.1	8.9	15.8
Feb 16	623.8	307.6	193.9	51.4	61.2	9.7	14.9
Feb 23	623.4	302.8	202.0	51.0	58.3	9.3	17.1
Mar 1	632.2	315.0	195.1	52.3	59.2	10.6	16.2
Mar 8	646.9	315.3	204.6	53.1	62.9	11.1	16.4
Mar 15	638.0	310.2	202.6	51.6	62.0	11.6	17.0
Mar 22	640.7	323.9	195.7	50.5	59.7	10.9	17.0
Mar 29	617.4	308.4	190.5	48.8	58.7	11.0	16.5
Apr 5	626.3	307.6	193.7	51.0	62.4	11.5	15.6
Apr 12	650.4	332.6	191.6	52.0	62.1	12.1	16.5
Apr 19	676.6	345.3	205.3	50.7	63.2	12.0	16.2
Apr 26	701.7	368.3	205.5	48.0	68.0	11.9	16.0
May 3	700.9	370.5	203.2	46.0	69.6	11.6	16.7
May 10	710.4	372.6	207.1	46.3	72.2	12.2	16.3
May 17	722.1	388.5	204.0	44.2	73.2	12.3	16.8
May 24	721.4	389.2	198.7	45.4	75.5	12.6	16.3
May 31	623.9	334.2	175.6	38.8	64.6	10.8	14.9
Jun 7	692.7	363.9	194.1	45.1	76.8	12.8	16.3
Jun 14	683.4	362.1	196.1	43.8	69.2	12.2	17.3
Jun 21	693.9	370.8	197.9	42.3	70.2	12.8	18.2
Jun 28	713.0	386.0	197.2	43.0	73.9	13.0	19.1
Jul 5	591.9	324.4	167.1	35.8	54.5	10.3	15.9
Jul 12	699.4	363.9	202.9	47.9	71.8	13.0	20.3
Jul 19	687.0	360.2	194.2	45.8	73.1	13.6	19.1
Jul 26	665.3	339.0	191.2	49.7	72.6	12.9	19.1
Aug 2	662.2	346.9	182.7	49.6	70.1	12.8	19.7
Aug 9	667.3	340.3	194.7	51.4	68.0	12.9	19.6
Aug 16	687.1	348.6	204.7	51.4	69.1	13.3	17.9
Aug 23	674.1	340.8	194.7	54.0	69.9	14.7	18.3
Aug 30	676.6	335.1	199.4	55.9	71.2	15.0	18.1
Sep 6	596.3	290.3	185.7	47.9	59.8	12.7	17.6
Sep 13	655.2	319.7	196.1	55.3	70.3	13.9	20.1
Sep 20	680.6	347.6	193.3	51.9	73.4	14.4	19.4
Sep 27	660.4	338.8	188.0	49.8	71.0	12.9	21.2
Oct 4	635.2	309.9	184.9	52.1	74.9	13.5	20.2
Oct 11	652.4	308.2	202.7	53.3	75.1	13.0	19.3
Oct 18	630.6	306.5	188.5	50.9	73.7	11.0	19.4
Oct 25	647.0	306.7	200.0	51.8	77.0	11.5	21.9
Nov 1	640.0	297.9	196.3	52.0	81.9	11.9	21.6
Nov 8	624.1	286.2	193.4	52.2	80.9	11.4	20.1
Nov 15	621.7	275.9	198.4	56.1	78.5	12.8	20.7
Nov 22	636.3	294.9	199.9	50.8	78.3	12.3	20.9
Nov 29	570.3	273.2	183.8	43.8	60.6	8.9	17.4
Dec 6	619.5	294.9	189.0	52.3	73.4	9.9	22.7
Dec 13	609.1	298.2	174.5	52.5	74.0	9.8	21.2
Dec 20	595.6	281.0	187.2	52.6	65.4	9.3	19.9
Dec 27	450.0	225.3	141.7	37.1	40.7	5.0	14.9
Jan 3, 2009	516.3	257.4	154.3	50.1	48.6	6.0	18.3
2008 Total	34,076.4	17,085.5	10,173.9	2,615.0	3,594.1	607.8	949.0
2007 Total ¹	33,617.1	17,234.6	10,174.2	2,488.8	3,167.0	552.6	742.4

See footnote(s) at end of table.

--continued

**Annual Federally Inspected Slaughter: Number of Head
by Species, Class, and Week, United States, 2008 and 2007 Total ¹ (continued)**

Week Ending	Total Hogs	Barrows & Gilts	Sows	Boars	Total Sheep	Mature Sheep	Lambs & Yearlings
	<i>1,000 Head</i>	<i>1,000 Head</i>	<i>1,000 Head</i>	<i>1,000 Head</i>	<i>1,000 Head</i>	<i>1,000 Head</i>	<i>1,000 Head</i>
Jan 5, 2008	1,995.9	1,940.5	48.3	7.1	39.0	2.0	36.9
Jan 12	2,434.5	2,356.8	68.7	9.0	43.9	2.0	41.9
Jan 19	2,418.8	2,338.1	70.5	10.3	46.4	2.0	44.5
Jan 26	2,297.4	2,219.4	67.7	10.3	45.8	1.7	44.1
Feb 2	2,273.1	2,198.3	65.0	9.8	46.2	1.9	44.3
Feb 9	2,195.0	2,124.1	62.8	8.1	45.8	2.0	43.8
Feb 16	2,221.4	2,148.8	64.3	8.3	47.7	2.2	45.4
Feb 23	2,206.8	2,136.5	63.0	7.3	48.1	2.0	46.0
Mar 1	2,190.9	2,113.2	68.7	9.0	51.3	2.1	49.2
Mar 8	2,231.4	2,152.7	69.3	9.4	53.6	2.4	51.1
Mar 15	2,275.9	2,193.9	73.0	8.9	63.4	2.1	61.3
Mar 22	2,302.7	2,223.8	70.1	8.8	50.7	2.3	48.4
Mar 29	2,261.8	2,180.0	71.7	10.1	40.6	2.3	38.3
Apr 5	2,283.5	2,201.4	72.2	9.9	43.1	2.2	40.8
Apr 12	2,239.9	2,158.9	71.9	9.1	46.6	2.2	44.4
Apr 19	2,319.9	2,236.9	73.1	9.8	49.2	2.1	47.1
Apr 26	2,245.8	2,165.1	71.1	9.7	52.6	2.7	49.9
May 3	2,144.7	2,072.3	63.4	9.0	43.1	2.6	40.6
May 10	2,087.2	2,009.3	69.3	8.6	47.1	2.4	44.7
May 17	2,061.6	1,980.9	71.4	9.2	43.6	2.7	40.9
May 24	2,102.3	2,025.1	68.1	9.0	45.9	3.3	42.7
May 31	1,825.8	1,758.9	59.3	7.6	40.4	2.3	38.1
Jun 7	2,107.4	2,028.6	70.1	8.8	41.4	2.5	38.9
Jun 14	2,047.8	1,969.8	69.3	8.7	42.9	2.4	40.5
Jun 21	2,081.0	1,999.9	72.5	8.5	43.3	2.5	40.8
Jun 28	2,139.8	2,051.6	78.4	9.8	42.7	2.4	40.4
Jul 5	1,711.9	1,644.6	59.8	7.5	37.5	2.3	35.2
Jul 12	2,156.6	2,076.8	69.7	10.1	41.7	2.2	39.4
Jul 19	2,139.4	2,057.2	72.4	9.9	43.1	2.5	40.7
Jul 26	2,129.7	2,057.9	62.2	9.6	44.1	2.3	41.8
Aug 2	2,092.9	2,015.8	67.6	9.5	45.9	2.4	43.5
Aug 9	2,127.3	2,049.3	68.4	9.6	41.9	2.2	39.7
Aug 16	2,144.3	2,067.9	67.0	9.5	43.0	2.7	40.4
Aug 23	2,238.4	2,161.1	67.7	9.5	43.9	2.3	41.7
Aug 30	2,227.6	2,147.0	71.4	9.3	48.0	3.2	44.8
Sep 6	2,049.5	1,981.5	60.8	7.2	43.7	2.4	41.2
Sep 13	2,296.2	2,214.3	72.9	9.0	47.3	2.5	44.8
Sep 20	2,327.0	2,247.3	70.7	9.0	47.5	2.5	45.0
Sep 27	2,346.1	2,270.9	67.3	7.9	48.5	2.4	46.0
Oct 4	2,322.2	2,243.3	69.9	9.0	48.7	2.8	45.9
Oct 11	2,374.2	2,297.5	68.1	8.6	46.2	2.5	43.8
Oct 18	2,357.6	2,280.7	67.9	8.9	44.4	2.2	42.1
Oct 25	2,289.4	2,217.1	64.1	8.2	44.7	2.1	42.6
Nov 1	2,378.9	2,304.0	66.6	8.3	45.7	2.0	43.7
Nov 8	2,304.7	2,229.8	67.0	7.9	47.2	2.3	44.9
Nov 15	2,320.5	2,244.8	67.2	8.5	46.4	2.1	44.3
Nov 22	2,368.0	2,290.0	68.6	9.3	45.9	2.3	43.6
Nov 29	2,046.4	1,995.6	44.5	6.3	40.1	2.0	38.1
Dec 6	2,368.0	2,290.5	69.0	8.4	51.7	2.6	49.2
Dec 13	2,338.7	2,266.6	64.9	7.1	50.4	2.6	47.8
Dec 20	2,372.4	2,298.2	65.7	8.4	48.5	2.4	46.2
Dec 27	1,732.3	1,691.0	36.5	4.7	35.5	1.9	33.6
Jan 3, 2009	1,898.6	1,845.2	47.8	5.5	36.3	2.1	34.2
2008 Total	116,450.8	112,470.8	3,519.0	461.0	2,412.4	123.2	2,289.2
2007 Total ¹	107,764.4	103,983.6	3,304.6	476.2	2,520.9	115.2	2,405.7

See footnote(s) at end of table.

--continued

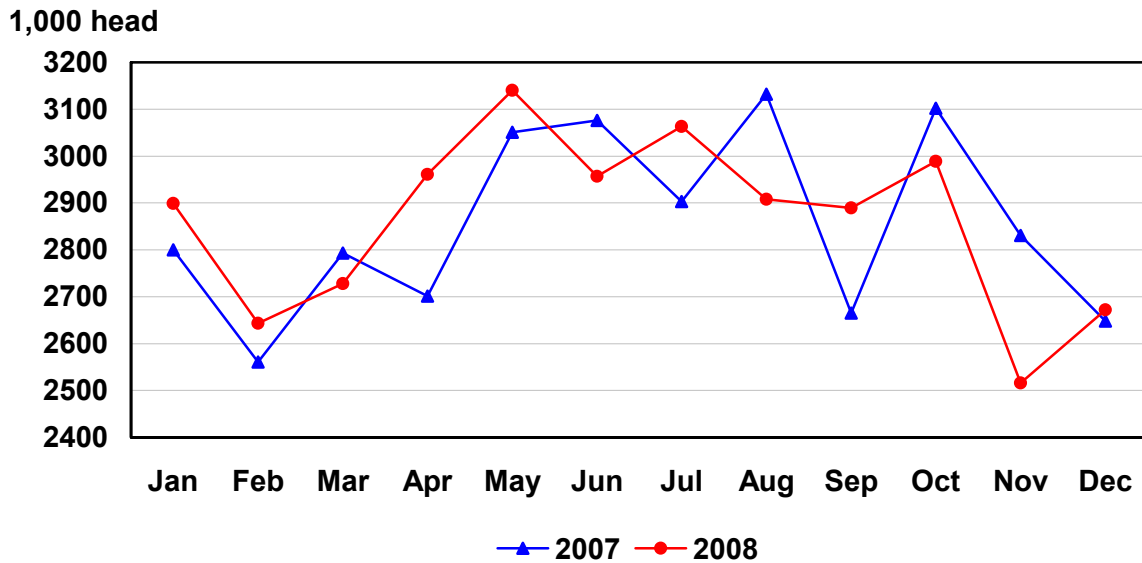
**Annual Federally Inspected Slaughter: Number of Head
by Species and Week, United States, 2008 and 2007 Total ¹ (continued)**

Week Ending	Goats <i>Total Head</i>	Equine ² <i>Total Head</i>	Bison <i>Total Head</i>
Jan 5, 2008	10,797		720
Jan 12	11,431		990
Jan 19	11,615		1,215
Jan 26	10,513		1,038
Feb 2	10,294		1,080
Feb 9	11,124		1,012
Feb 16	11,284		1,140
Feb 23	10,330		1,134
Mar 1	10,454		1,380
Mar 8	12,263		1,190
Mar 15	14,491		977
Mar 22	16,712		1,128
Mar 29	12,665		1,341
Apr 5	10,805		1,191
Apr 12	11,477		1,123
Apr 19	12,737		1,010
Apr 26	12,733		1,252
May 3	11,475		996
May 10	12,547		976
May 17	11,981		1,284
May 24	12,486		1,033
May 31	11,199		955
Jun 7	12,346		1,111
Jun 14	11,519		1,090
Jun 21	12,498		1,207
Jun 28	13,496		1,119
Jul 5	12,227		837
Jul 12	12,309		1,176
Jul 19	12,692		1,266
Jul 26	12,878		1,148
Aug 2	11,836		1,029
Aug 9	12,891		887
Aug 16	13,613		902
Aug 23	12,916		886
Aug 30	16,937		1,014
Sep 6	13,556		906
Sep 13	13,126		1,133
Sep 20	13,271		1,077
Sep 27	16,008		961
Oct 4	13,026		884
Oct 11	13,388		768
Oct 18	12,628		920
Oct 25	12,769		969
Nov 1	12,768		938
Nov 8	12,928		1,021
Nov 15	13,275		951
Nov 22	14,241		1,264
Nov 29	13,037		766
Dec 6	14,586		1,309
Dec 13	15,429		1,027
Dec 20	15,719		949
Dec 27	14,718		555
Jan 3, 2009	12,455		794
2008 Total	676,499		55,029
2007 Total ¹	637,931	29,767	50,053

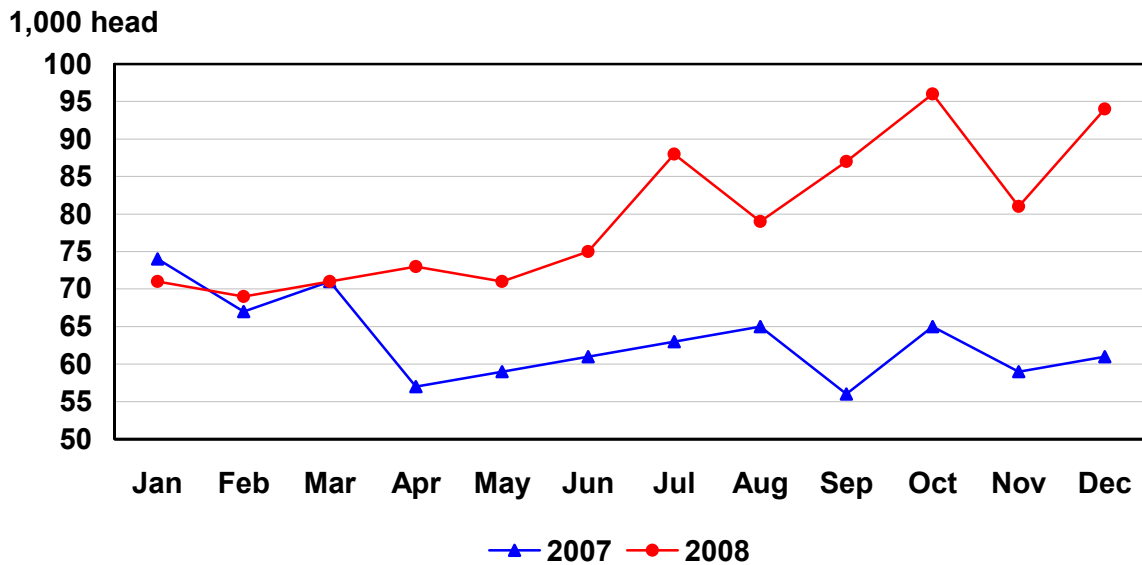
¹ Includes data from week ending Jan 6, 2007 through Dec 29, 2007.

² Equine slaughter was discontinued in the U.S. during the week of September 22, 2007.

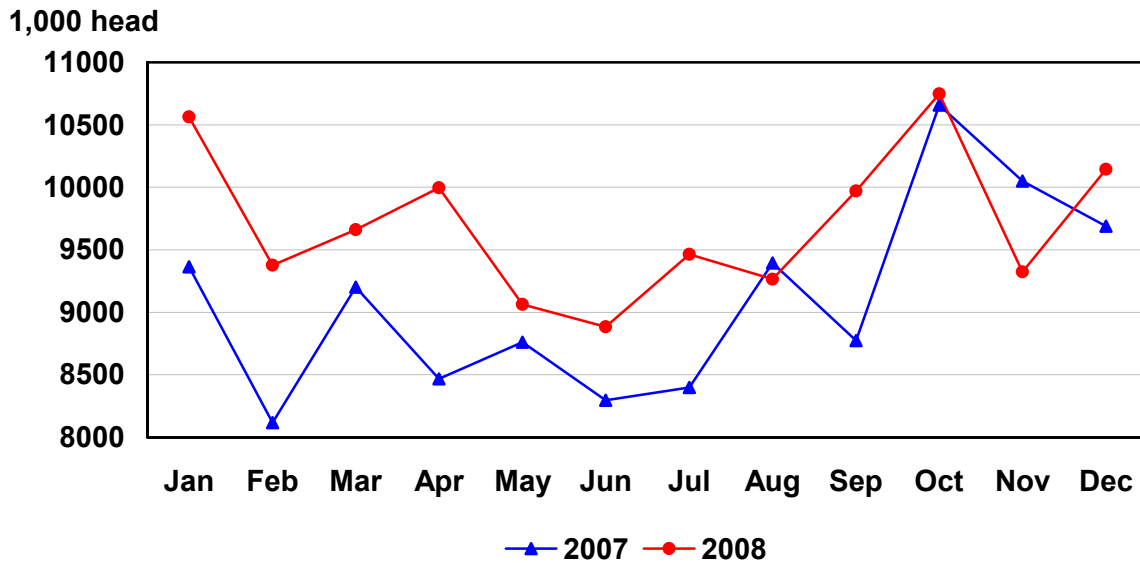
U.S. Monthly Commercial Slaughter Cattle



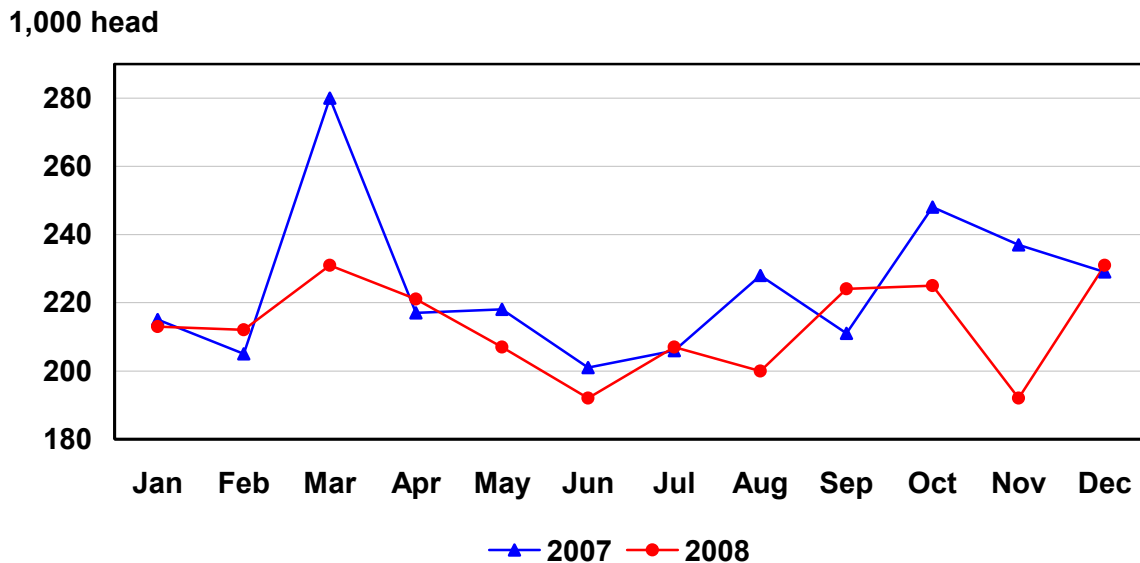
U.S. Monthly Commercial Slaughter Calves



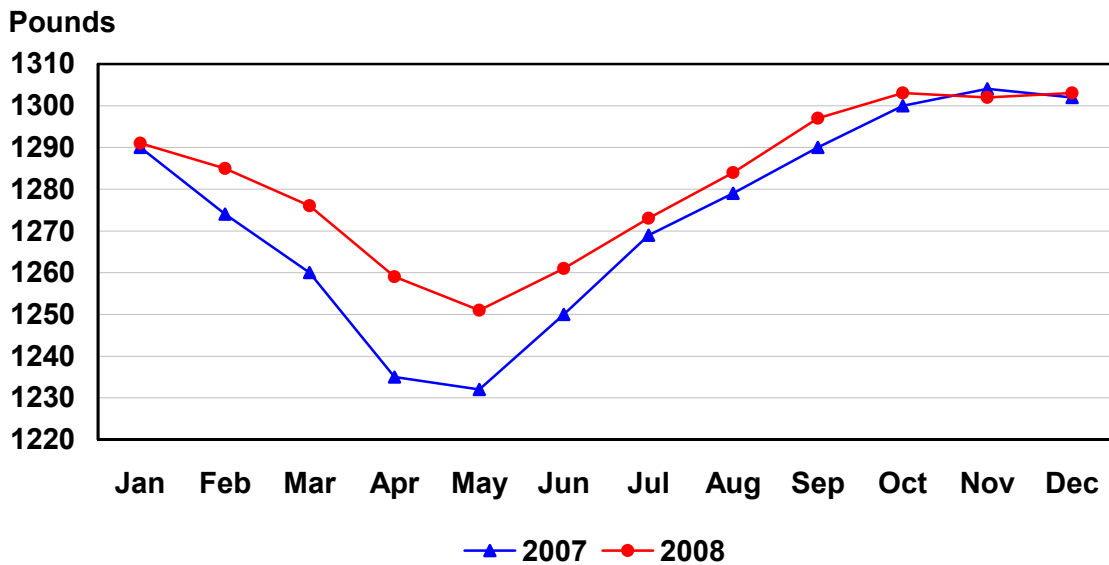
U.S. Monthly Commercial Slaughter Hogs



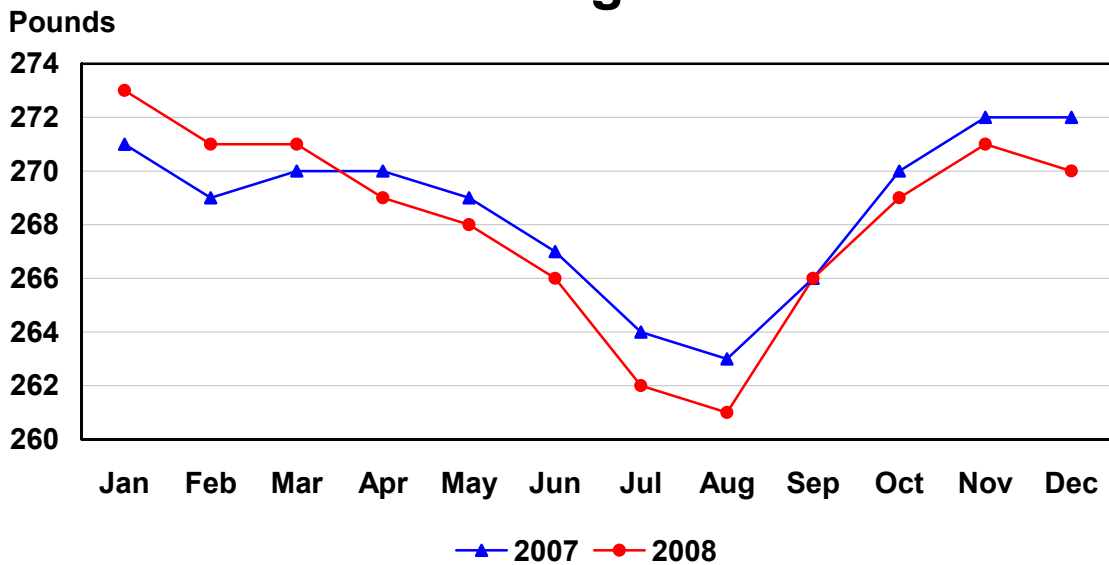
U.S. Monthly Commercial Slaughter Sheep



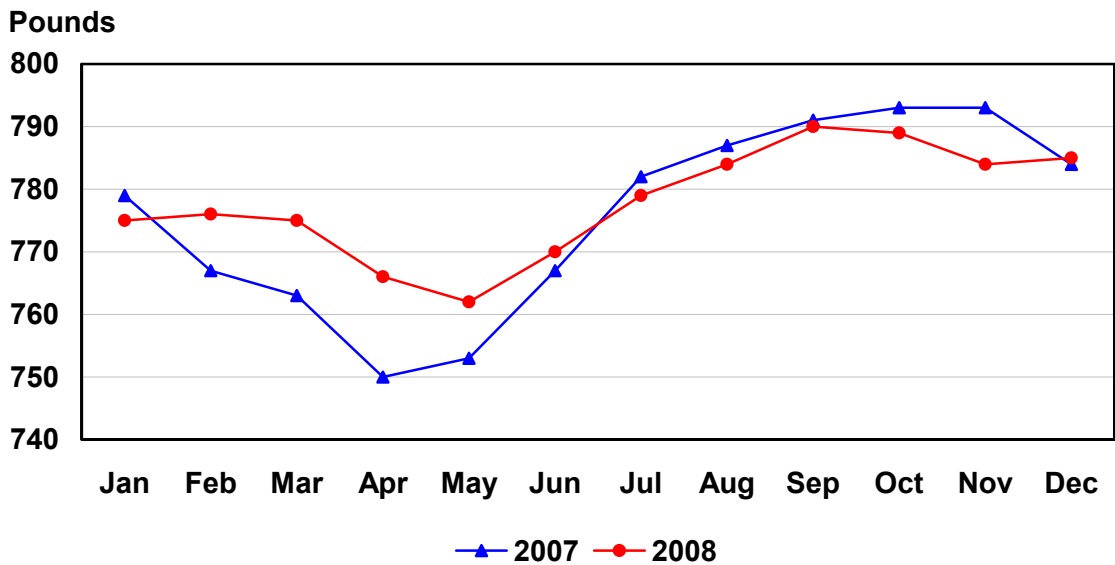
U.S. Monthly Commercial Slaughter Average Live Weight Cattle



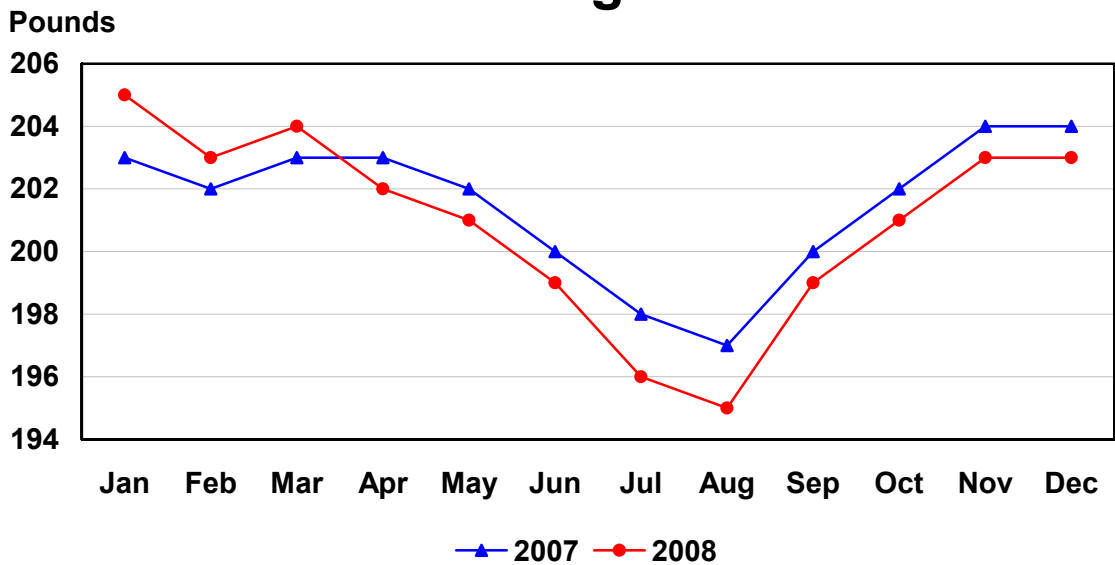
U.S. Monthly Commercial Slaughter Average Live Weight Hogs



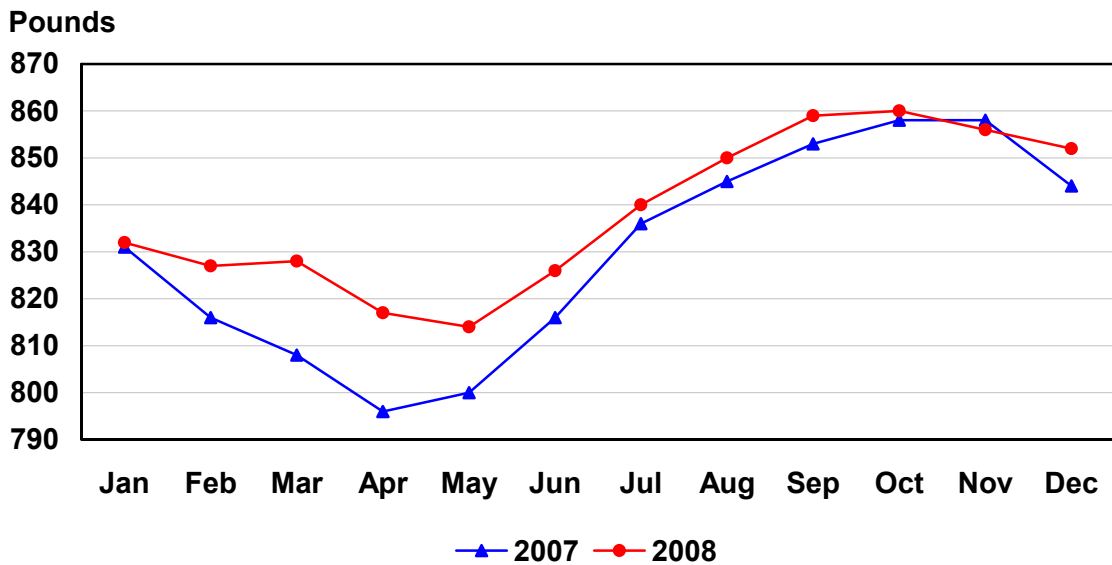
U.S. Monthly Federally Inspected Average Dressed Weight Cattle



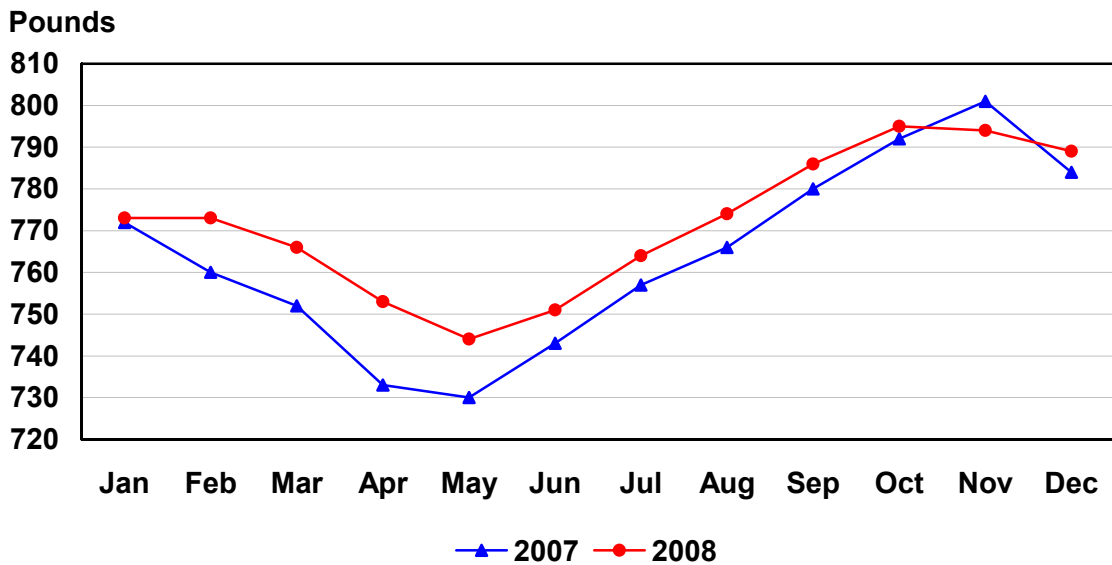
U.S. Monthly Federally Inspected Average Dressed Weight Hogs



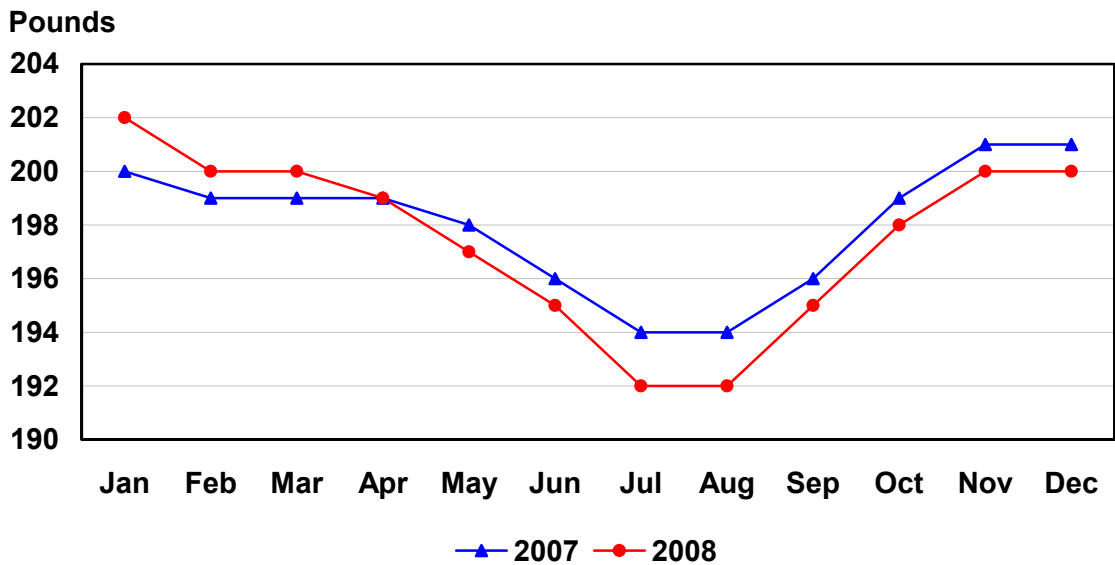
U.S. Monthly Federally Inspected Average Dressed Weight Steers



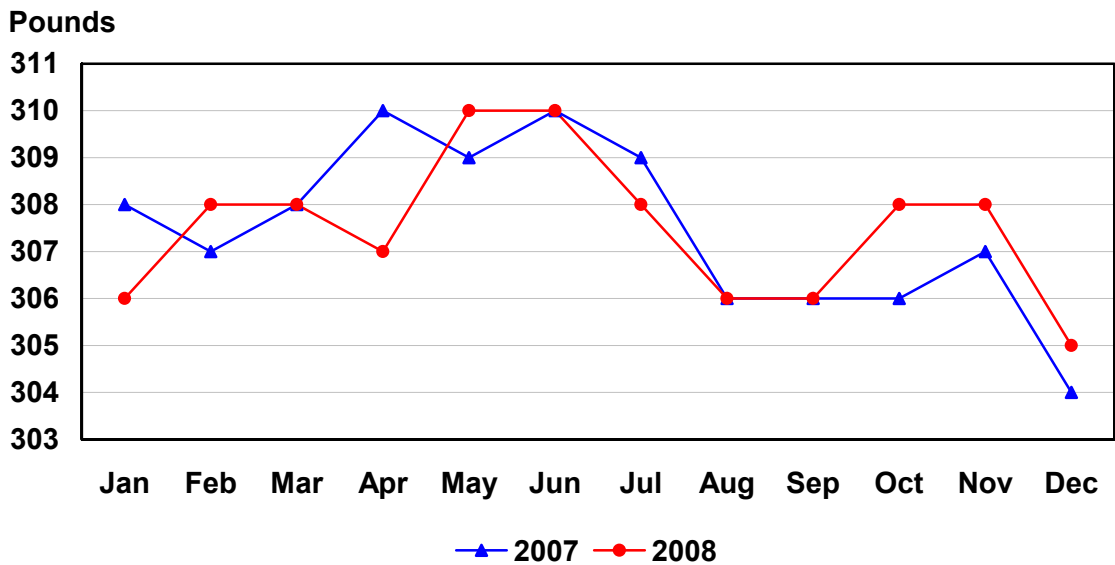
U.S. Monthly Federally Inspected Average Dressed Weight Heifers



U.S. Monthly Federally Inspected Average Dressed Weight Barrows and Gilts



U.S. Monthly Federally Inspected Average Dressed Weight Sows



Reliability of Livestock Slaughter Estimates

Data Sources: Primary data for the commercial livestock slaughter estimates are obtained from electronic reports completed by inspectors from the Food Safety and Inspection Service (FSIS), USDA, which provide daily counts of animals slaughtered in Federally Inspected (FI) plants, in addition to total live and dressed weights. These counts are combined with data from State-administered Non-Federally Inspected (NFI) slaughter plants to derive total commercial slaughter estimates. More than 95 percent of the total U.S. slaughter for any species is under Federal Inspection.

There are approximately 800 livestock slaughter plants in the U.S. operating under Federal Inspection and over 2,000 Non-Federally Inspected (State-inspected or custom-exempt) slaughter plants. Slaughter from State-inspected Talmedge-Aiken plants is included in FI totals (see Types of Plants, page 69). To prevent duplication in reporting between FI and NFI plants and assure all FI plants are included, certificates prepared by FSIS identifying operating status are constantly monitored.

Revision Policy: Number of head slaughtered, live weights, and dressed weights are subject to revision the following month after the monthly release. Annual totals are published in the slaughter summary each March which includes any revisions made to current and previous year's published data. Revisions are generally the result of late reports received from slaughter plants and are usually less than one-half of one percent. No revisions will be made to the previous year's data after the publication of the annual summary in March.

Procedures and Reliability: The livestock slaughter data is obtained electronically on a daily basis and summarized approximately two weeks after the week of slaughter. An edit compares each plant's data with the historical data for that plant. Data are checked for unusual values for head kill, patterns of kill, average weights, and dressing percent, based on each plant's past operating profile. In addition, the edit provides a listing of missing reports for follow-up contact with FSIS. Average live and dressed weights and dressing percentages by State are compared with the previous weeks as an additional check. Fluctuations are frequently the result of plants permanently or temporarily closing and a shift in the species reported.

The FSIS District Veterinary Medical Specialists (DVMS) are contacted by e-mail or telephone for missing or potentially erroneous slaughter data. This assures that plants slaughtering a large number of head or several species are accounted for each week. Any corrections FSIS makes to the slaughter data are included in the summary.

Imputation may be necessary for incomplete reports. The imputation of live and dressed weights is based on the current week reported data of plants of similar size and location. Imputation for live and dressed weight data for cattle and hogs is less than 10 percent and 7 percent, respectively. The imputation for calves and sheep is more frequent and variable. If no data is received electronically or by other means, for plants slaughtering fewer than 50 total head weekly of only one species, data are imputed. The imputation of head for any plant is based on the historical data for that particular plant. The imputation of head slaughtered is rare but when necessary, the imputed head kill for missing plants usually is less than 1 percent of the U.S. head kill totals.

FI data are summarized weekly and accumulated to a monthly total for this release. These weekly totals are published by USDA's Agricultural Marketing Service (AMS) in **Livestock, Meat, Wool Market News**, Weekly Summary, and Statistics and are also available on the NASS website. NFI data are summarized monthly only.

Livestock slaughter estimates are based on a census of operating plants and therefore, have no sampling error. However, they may be subject to errors such as omissions, duplications and mistakes in reporting, recording and processing the data. These errors are minimized through rigid quality controls in the edit and summarization process, and a careful review of all reported data for consistency and reasonableness.

No data are published when an individual plant's data could be divulged. If not published, these data are still included in U.S. and region totals. A review of the data is made annually to determine the publishable data.

Types of Livestock Slaughter Plants

There are generally **four types** of slaughtering plants.

- (1) **Federally Inspected (FI) Plants:** Plants that transport meat interstate must employ federal inspectors to assure compliance with USDA standards. Any State whose commercial plants operate entirely under federal inspection may still have custom-exempt establishments for which NFI estimates are made.
- (2) **Talmedge-Aiken (TA) Plants:** Slaughter plants in which USDA is responsible for inspection. However, federal inspection is carried out by State employees. These plants are considered to be federally inspected.
- (3) **Non-Federally Inspected (NFI) Plants:** Plants which sell and transport only intrastate. State inspectors assure compliance with individual State standards for these NFI plants. Mobile slaughtering units are excluded and are considered farm slaughter.
- (4) **Custom-Exempt Plants:** Plants that do not sell meat but operate on a custom basis only are custom-exempt. The animals and meat are not inspected, but the facilities must meet health standards. These are considered NFI plants and head kill is included in NFI totals.

Terms and Definitions Used for Livestock Slaughter Estimates

Average Live Weight: Excludes post-mortem condemnations.

Commercial Production: Includes slaughter and meat production in federally inspected and other plants, but excludes animals slaughtered on farms.

Dressed Weight: The weight of a chilled animal carcass. Beef with kidney knob in; veal with hide off; lamb and mutton with pluck out; pork with leaf fat and kidneys out, jowls on and head off.

Dressing Percent: Usually expressed as a percentage yield of chilled carcass in relation to the weight of the live animal on hoof. For example, a live hog that weighed 200 pounds on hoof and yielded a carcass weighing 140 pounds would have a dressing percentage of 70.

Food and Meat Inspection: Includes examination, checking, or testing of a carcass and/or meat against established government standards and involves checking the facility for cleanliness, health of animals, or parts of animals and quality of the meat produced.

Number of Head: Includes post-mortem condemnations.

Plant, Slaughter: An establishment where animals are killed and butchered.

Red Meat: Red meat production is the carcass weight after slaughter excluding condemnation and is comprised of beef, veal, pork, and lamb and mutton. The FI red meat production is equal to the total carcass weight after slaughter. The NFI meat production formula is (NFI head kill) X (live weight) X (FI dressing percentage) = NFI red meat production.

Slaughter: Killing and butchering of animals primarily for food.

Slaughter, Farm: Animals slaughtered on farms primarily for home consumption. Excludes custom slaughter for farmers at commercial establishments, but includes mobile slaughtering on farms. These estimates appear only in the annual slaughter release.

Total Live Weight: Excludes post-mortem condemnations.

Wholesome Meat Act: Legislation that specifies that all meat produced for sale in the U.S. must be inspected. Meat that is transported interstate must be inspected in compliance with Federal (USDA) Standards.

Information Contacts

Listed below are the commodity specialists in the Livestock Branch of the National Agricultural Statistics Service to contact for additional information.

Dan Kerestes, Chief, Livestock Branch.....	(202) 720-3570
Scott Hollis, Head, Livestock Section.....	(202) 690-2424
Jim Collom – Dairy Products.....	(202) 690-3236
Joe Gaynor – Dairy Products Prices	(202) 690-2168
Jason Hardegree – Cattle, Cattle on Feed	(202) 720-3040
Sherry Bertramsen – Livestock Slaughter	(515) 284-4340
Mike Miller – Milk Production and Milk Cows	(202) 720-3278
Everett Olbert – Sheep and Goats.....	(202) 720-4751
Nicholas Streff – Hogs and Pigs	(202) 720-3106

Index

	Page
Commercial Slaughter - Number of Head, Total Live Weight, and Average Live Weight, by Month, by State	
Calves.....	34
Cattle.....	28
Hogs.....	40
Sheep and Lambs.....	46
 Federally Inspected Slaughter	
Average Dressed Weight by Species and Class, U.S.	5
Classification by Head and by Percent, U.S.	12
Number of Plants and Head Slaughtered, by Size Group, U.S.	56
Number of Plants and Head Slaughtered, by Species, by State	52
Number of Slaughter Plants, by State	58
Number of Head Slaughtered by Species and Region	14
Percent of Total Commercial by Species, U.S.	3
Slaughter, by Weeks, U.S.	59
 Red Meat Production - Total Pounds by Type	
Commercial by Month, U.S.	2
Federally Inspected by Month, U.S.	2
Red Meat, by Month, by States.....	6
 Reliability Statement.....	68
 Slaughter - Number of Head and Average Live Weight, by Species and Month, U.S.	8

This report is made possible through the cooperative efforts of Agricultural Marketing Service, Food Safety and Inspection Service, and the Agricultural Statistics Board, NASS.

ACCESS TO REPORTS!!

For your convenience, there are several ways to obtain NASS reports, data products, and services:

INTERNET ACCESS

All NASS reports are available free of charge on the worldwide Internet. For access, connect to the Internet and go to the NASS Home Page at: www.nass.usda.gov.

E-MAIL SUBSCRIPTION

All NASS reports are available by subscription free of charge direct to your e-mail address. Starting with the NASS Home Page at www.nass.usda.gov, under the right navigation, *Receive reports by Email*, click on **National** or **State**. Follow the instructions on the screen.

PRINTED REPORTS OR DATA PRODUCTS

CALL OUR TOLL-FREE ORDER DESK: 800-999-6779 (U.S. and Canada)
Other areas, please call 703-605-6220 FAX: 703-605-6900
(Visa, MasterCard, check, or money order acceptable for payment.)

ASSISTANCE

For **assistance** with general agricultural statistics or further information about NASS or its products or services, contact the **Agricultural Statistics Hotline** at **800-727-9540**, 7:30 a.m. to 4:00 p.m. ET, or e-mail: nass@nass.usda.gov.

The U.S. Department of Agriculture (USDA) prohibits discrimination in all its programs and activities on the basis of race, color, national origin, age, disability, and where applicable, sex, marital status, familial status, parental status, religion, sexual orientation, genetic information, political beliefs, reprisal, or because all or part of an individual's income is derived from any public assistance program. (Not all prohibited bases apply to all programs.) Persons with disabilities who require alternative means for communication of program information (Braille, large print, audiotape, etc.) should contact USDA's TARGET Center at (202) 720-2600 (voice and TDD).

To file a complaint of discrimination, write to USDA, Director, Office of Civil Rights, 1400 Independence Avenue, S.W., Washington, D.C. 20250-9410, or call (800) 795-3272 (voice) or (202) 720-6382 (TDD). USDA is an equal opportunity provider and employer.