

Milkfat Prices

Released August 31, 2001, by the National Agricultural Statistics Service (NASS), Agricultural Statistics Board, U.S. Department of Agriculture. For information on "Milkfat Prices" call Tony Dorn at 202-720-9168, office hours 7:00 a.m. to 4:00 p.m. ET.

Milkfat prices received for sweet cream with a fat content of 38 to 50 percent for the weeks ending August 25 and August 18 are as follows, respectively: Class II \$2.58, \$2.54; and All Classes \$2.60, \$2.55.

Milkfat Prices, United States

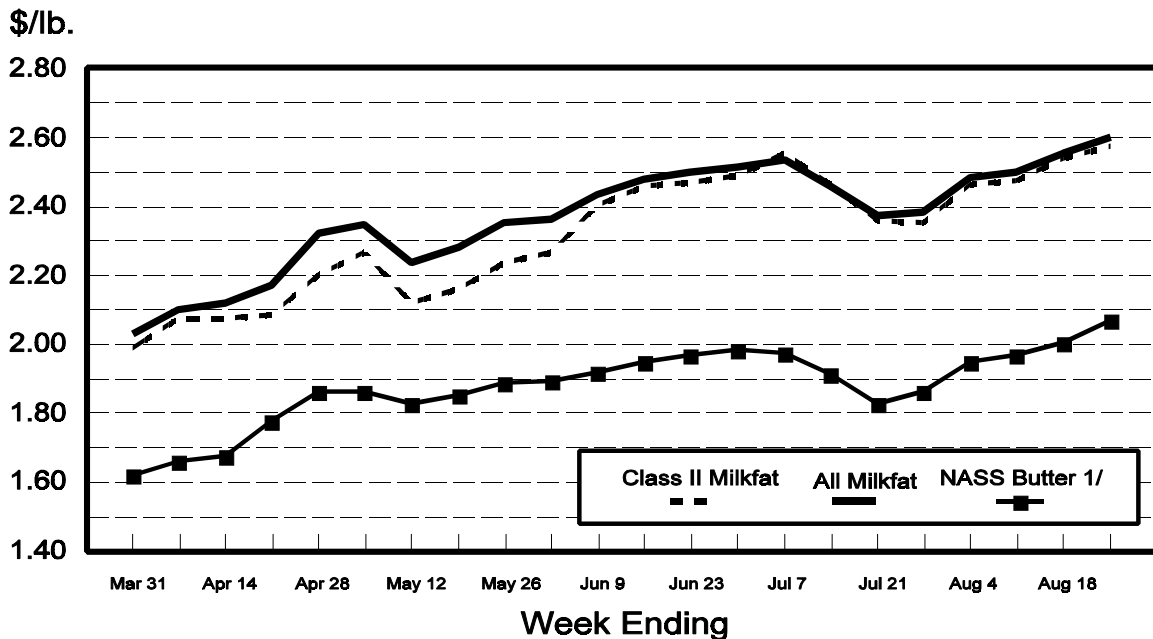
Class	Week Ending					
	Aug 25, 2001	Aug 18, 2001	Aug 11, 2001 ¹	Aug 4, 2001 ¹	Jul 28, 2001 ¹	Jul 21, 2001 ¹
	<i>Dol./Lb.</i>	<i>Dol./Lb.</i>	<i>Dol./Lb.</i>	<i>Dol./Lb.</i>	<i>Dol./Lb.</i>	<i>Dol./Lb.</i>
Class II Avg. Price ²	2.5775	2.5386	2.4724	2.4615	2.3540	2.3563
	<i>Pounds</i>	<i>Pounds</i>	<i>Pounds</i>	<i>Pounds</i>	<i>Pounds</i>	<i>Pounds</i>
Milkfat ³ Purchases	2,051,041	2,290,824	2,291,521	2,539,201	2,808,372	2,968,610
	<i>Dol./Lb.</i>	<i>Dol./Lb.</i>	<i>Dol./Lb.</i>	<i>Dol./Lb.</i>	<i>Dol./Lb.</i>	<i>Dol./Lb.</i>
All Classes Avg. Price ²	2.5990	2.5538	2.4984	2.4860	2.3851	2.3726
	<i>Pounds</i>	<i>Pounds</i>	<i>Pounds</i>	<i>Pounds</i>	<i>Pounds</i>	<i>Pounds</i>
Milkfat ³ Purchases	3,782,910	4,042,760	5,627,837	6,129,354	5,968,163	6,221,271

¹ Revised.

² Prices weighted by volumes reported.

³ Purchases as reported by participating manufacturers.

U.S. Milkfat Prices



1/ NASS Butter prices available from the Dairy Products Prices Release.

Procedures and Reliability: Price information included in this report is provided each week by “end-users” of milkfat. These “end- users” typically produce ice cream mix, cream cheese, butter, or processed cheese. Data are collected by fax and electronic mail every two weeks. Prices are to be f.o.b. point of origin (plant door). The data excludes the following items:

- 1) Transportation and clearing costs.
- 2) Intra-company purchases.
- 3) Purchases of milkfat to be resold.
- 4) Forward pricing purchases in which the price was set (and not adjusted) 30 or more days before the transaction was completed.

A transaction is complete when the milkfat is “received” and title transfer occurs.

Revision Policy: Price data for the prior 4 weeks are subject to revision based on late reports.

The next "Milkfat Prices" report will be released at 8:30 a.m. ET on September 14, 2001.

The United States Department of Agriculture (USDA) prohibits discrimination in all its programs on the basis of race, color, national origin, gender, religion, age, disability, political beliefs, sexual orientation, and marital or family status. (Not all prohibited bases apply to all programs.) Persons with disabilities who require alternative means for communication of program information (braille, large print, audiotape, etc.) should contact the USDA’s TARGET Center at 202-720-2600 (voice and TDD).

To file a complaint of discrimination, write USDA, Director, Office of Civil Rights, Room 326-W, Whitten Building, 1400 Independence Avenue, SW, Washington, D.C., 20250-9410, or call 202-720-5964 (voice or TDD). USDA is an equal opportunity provider and employer.

ACCESS TO REPORTS!!

For your convenience, there are several ways to obtain NASS reports, data products, and services:

INTERNET ACCESS

All NASS reports are available free of charge on the worldwide Internet. For access, connect to the Internet and go to the NASS Home Page at: <http://www.usda.gov/nass/>. Select “Today’s Reports” or Publications and then Reports by Calendar or Publications and then Search, by Title or Subject.

E-MAIL SUBSCRIPTION

There are two options for subscribing via e-mail. All NASS reports are available by subscription free of charge direct to your e-mail address. 1) Starting with the NASS Home Page at <http://www.usda.gov/nass/>, click on **Publications**, then click on the **Subscribe by E-mail** button which takes you to the page describing e-mail delivery of reports. Finally, click on **Go to the Subscription Page** and follow the instructions. 2) If you do NOT have Internet access, send an e-mail message to: usda-reports@usda.mannlib.cornell.edu. In the body of the message type the word: **list**.

AUTOFAX ACCESS

NASSFax service is available for some reports from your fax machine. Please call 202-720-2000, using the handset attached to your fax. Respond to the voice prompts. Document 0411 is a list of available reports.

PRINTED REPORTS OR DATA PRODUCTS

CALL OUR TOLL-FREE ORDER DESK: 800-999-6779 (U.S. and Canada)
Other areas, please call 703-605-6220 FAX: 703-605-6900
(Visa, MasterCard, check, or money order acceptable for payment.)

ASSISTANCE

For **assistance** with general agricultural statistics or further information about NASS or its products or services, contact the **Agricultural Statistics Hotline** at **800-727-9540**, 7:30 a.m. to 4:00 p.m. ET, or e-mail: nass@nass.usda.gov.