

Released April 17, 2000, by the National Agricultural Statistics Service (NASS), Agricultural Statistics Board, U.S. Department of Agriculture. For information on "Milk Production" call Steve Anderson at 202-690-3236, office hours 7:00 a.m. to 4:30 p.m. ET.

March Milk Production Up 3.8 Percent

Milk production in the 20 major States during March totaled 12.7 billion pounds, up 3.8 percent from production in these same States in March 1999. February revised production, at 11.7 billion pounds, was up 8.2 percent from February 1999. However, adjusting production for the additional day due to the leap year causes February milk production to be up 4.5 percent on a per day basis. The February revision represented a slight decrease of 1 million pounds from last months preliminary production estimate.

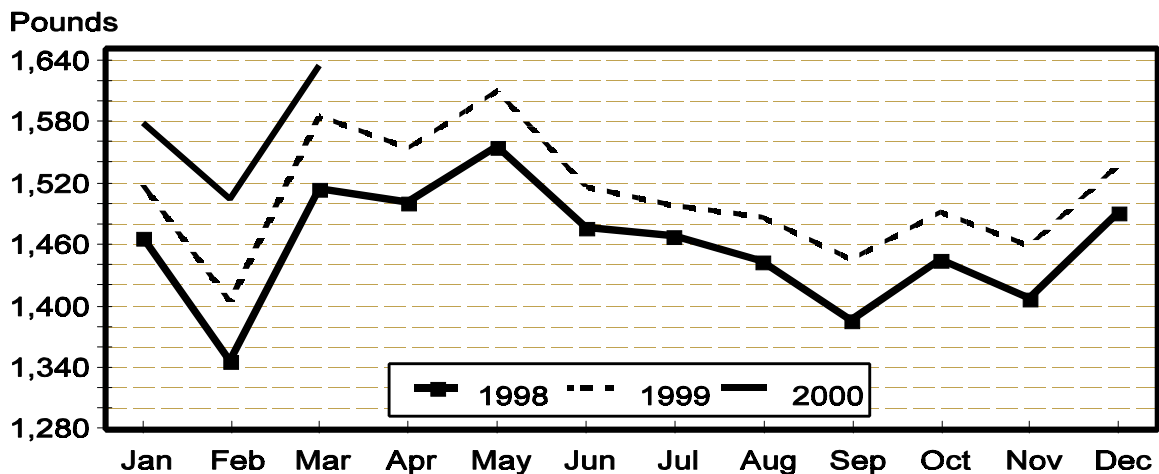
Production per cow in the 20 major States averaged 1,634 pounds for March, 49 pounds above March 1999.

The number of cows on farms in the 20 major States was 7.77 million head, 57,000 head more than March 1999 and 4,000 head more than February 2000.

January-March Milk Production Up 5.1 Percent

The quarterly production of milk for the U.S. was 42.6 billion pounds, 5.1 percent above the January-March period last year. The average number of milk cows in the U.S. during the January-March quarter was 9.19 million head, 58,000 head more than the same period last year.

Monthly Milk per Cow 20 States



Milk Cows and Production: By Quarter, United States, 1999-2000¹

Quarter	Milk Cows ²		Milk Per Cow ³		Milk Production ³		
	1999	2000	1999	2000	1999	2000	Change From 1999
	<i>1,000 Head</i>	<i>1,000 Head</i>	<i>Pounds</i>	<i>Pounds</i>	<i>Million Pounds</i>	<i>Million Pounds</i>	<i>Percent</i>
Jan-Mar	9,128	9,186	4,437	4,637	40,505	42,591	5.1
Apr-Jun	9,155		4,591		42,029		
Jul-Sep	9,171		4,337		39,771		
Oct-Dec	9,170		4,406		40,406		
Annual	9,156		17,771		162,711		

¹ May not add due to rounding.

² Includes dry cows, excludes heifers not yet fresh.

³ Excludes milk sucked by calves.

Milk Cows and Production: By Month, 20 Selected States, 1999-2000

Month	Milk Cows ¹		Milk Per Cow ²		Milk Production ²		
	1999	2000	1999	2000	1999	2000	Change From 1999
	<i>1,000 Head</i>	<i>1,000 Head</i>	<i>Pounds</i>	<i>Pounds</i>	<i>Million Pounds</i>	<i>Million Pounds</i>	<i>Percent</i>
Jan	7,694	7,765	1,518	1,578	11,679	12,256	4.9
Feb	7,696	7,766	1,404	1,505	10,804	11,691	8.2
Mar	7,713	7,770	1,585	1,634	12,228	12,694	3.8
Apr	7,720		1,554		11,998		
May	7,733		1,610		12,447		
Jun	7,740		1,516		11,737		
Jul	7,751		1,498		11,610		
Aug	7,755		1,487		11,534		
Sep	7,753		1,445		11,200		
Oct	7,746		1,491		11,549		
Nov	7,756		1,459		11,315		
Dec	7,757		1,538		11,928		
Annual	7,735		18,103		140,029		

¹ Includes dry cows, excludes heifers not yet fresh.

² Excludes milk sucked by calves.

Estimated Milk Cows and Production: By Month, United States, 1999-2000

Month	Milk Cows ¹		Milk Per Cow ²		Milk Production ²		
	1999	2000	1999	2000	1999	2000	Change From 1999
	<i>1,000 Head</i>	<i>1,000 Head</i>	<i>Pounds</i>	<i>Pounds</i>	<i>Million Pounds</i>	<i>Million Pounds</i>	<i>Percent</i>
Jan	9,121	9,184	1,494	1,551	13,628	14,246	4.5
Feb	9,123	9,185	1,382	1,480	12,607	13,590	7.8
Mar	9,141	9,190	1,561	1,606	14,270	14,755	3.4
Apr	9,143		1,524		13,938		
May	9,157		1,579		14,458		
Jun	9,166		1,487		13,633		
Jul	9,167		1,467		13,444		
Aug	9,174		1,456		13,357		
Sep	9,171		1,414		12,970		
Oct	9,162		1,464		13,412		
Nov	9,174		1,432		13,140		
Dec	9,175		1,510		13,854		
Annual	9,156		17,771		162,711		

¹ Includes dry cows, excludes heifers not yet fresh.

² Excludes milk sucked by calves.

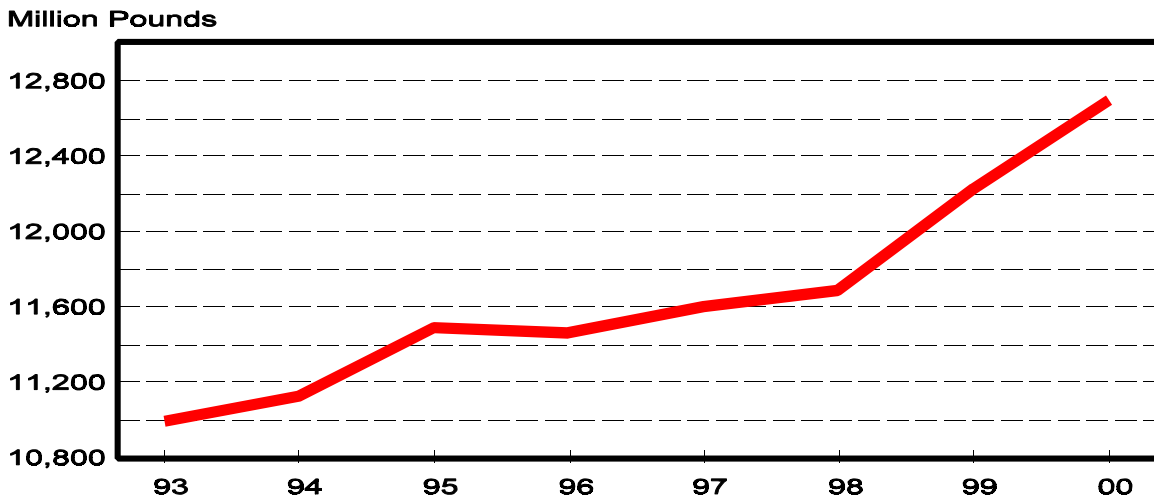
Milk Cows and Production: By State, March 1999-2000

State	Milk Cows ¹		Milk Per Cow ²		Milk Production ²		
	1999	2000	1999	2000	1999	2000	Change From 1999
	<i>1,000 Head</i>	<i>1,000 Head</i>	<i>Pounds</i>	<i>Pounds</i>	<i>Million Pounds</i>	<i>Million Pounds</i>	<i>Percent</i>
AZ	132	137	2,135	2,125	282	291	3.2
CA	1,452	1,500	1,795	1,815	2,606	2,723	4.5
FL	159	157	1,540	1,560	245	245	
ID	309	334	1,660	1,730	513	578	12.7
IL	125	120	1,480	1,580	185	190	2.7
IN	136	143	1,380	1,490	188	213	13.3
IA	218	215	1,540	1,610	336	346	3.0
KY	134	130	1,110	1,195	149	155	4.0
MI	296	291	1,565	1,625	463	473	2.2
MN	545	540	1,550	1,585	845	856	1.3
MO	161	156	1,310	1,350	211	211	
NM	231	240	1,770	1,900	409	456	11.5
NY	700	700	1,480	1,520	1,036	1,064	2.7
OH	260	260	1,450	1,495	377	389	3.2
PA	614	618	1,565	1,620	961	1,001	4.2
TX	342	350	1,625	1,640	556	574	3.2
VT	162	160	1,440	1,520	233	243	4.3
VA	122	119	1,335	1,440	163	171	4.9
WA	249	246	1,885	1,940	469	477	1.7
WI	1,366	1,354	1,465	1,505	2,001	2,038	1.8
20-State Total	7,713	7,770	1,585	1,634	12,228	12,694	3.8

¹ Includes dry cows, excludes heifers not yet fresh.

² Excludes milk sucked by calves.

**March Milk Production, 1993-2000
20 States**



Milk Cows and Production: By State, February 1999-2000 ¹

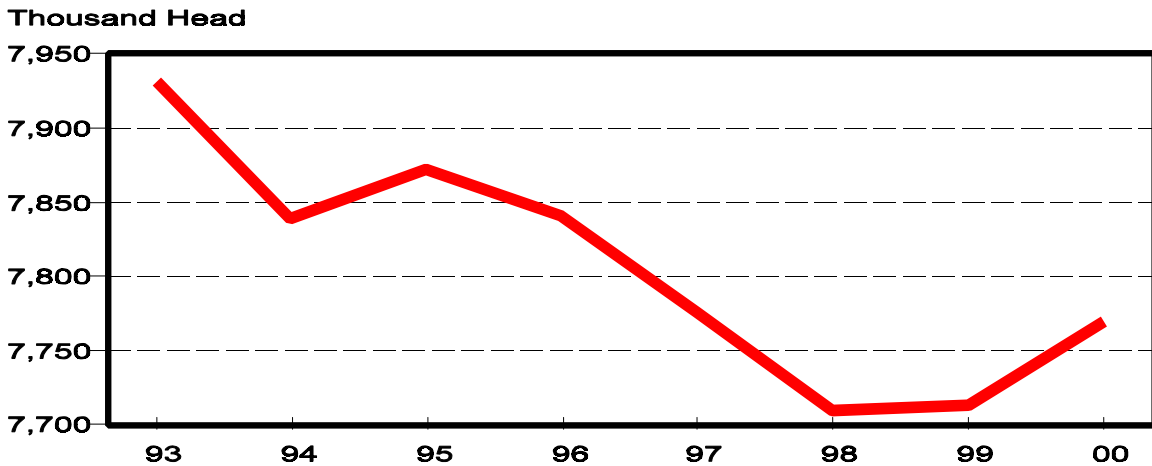
State	Milk Cows ²		Milk per Cow ³		Milk Production ³		
	1999	2000	1999	2000	1999	2000	Change From 1999
	<i>1,000 Head</i>	<i>1,000 Head</i>	<i>Pounds</i>	<i>Pounds</i>	<i>Million Pounds</i>	<i>Million Pounds</i>	<i>Percent</i>
AZ	132	137	1,835	1,935	242	265	9.5
CA	1,447	1,496	1,555	1,710	2,250	2,558	13.7
FL	158	157	1,365	1,410	216	221	2.3
ID	306	332	1,490	1,610	456	535	17.3
IL	125	120	1,310	1,480	164	178	8.5
IN	136	141	1,300	1,380	177	195	10.2
IA	219	215	1,380	1,500	302	323	7.0
KY	135	130	985	1,085	133	141	6.0
MI	292	295	1,405	1,500	410	443	8.0
MN	545	540	1,385	1,465	755	791	4.8
MO	162	157	1,140	1,220	185	192	3.8
NM	223	238	1,615	1,730	360	412	14.4
NY	702	700	1,320	1,370	927	959	3.5
OH	260	259	1,310	1,400	341	363	6.5
PA	615	617	1,375	1,475	846	910	7.6
TX	341	350	1,430	1,470	488	515	5.5
VT	162	160	1,290	1,405	209	225	7.7
VA	122	120	1,205	1,330	147	160	8.8
WA	248	246	1,695	1,790	420	440	4.8
WI	1,366	1,356	1,300	1,375	1,776	1,865	5.0
20-State Total	7,696	7,766	1,404	1,505	10,804	11,691	8.2

¹ 2000 revised.

² Includes dry cows, excludes heifers not yet fresh.

³ Excludes milk sucked by calves.

**March Milk Cows, 1993-2000
20 States**



**Milk Cows and Production: By State and United States,
Revised October-December, 1998-1999**

State	Oct-Dec Milk Cows ¹		Oct-Dec Milk Production ²		Change From 1998 Percent
	1998 <i>1,000 Head</i>	1999 <i>1,000 Head</i>	1998 <i>Million Pounds</i>	1999 <i>Million Pounds</i>	
AL	27	27	92	90	-2.2
AK	0.8	0.9	3.51	3.03	-13.7
AZ	132	135	676	717	6.1
AR	42	42	120	125	4.2
CA	1,435	1,484	7,033	7,791	10.8
CO	83	83	421	441	4.8
CT	29	28	128	124	-3.1
DE	11.0	11.0	37.5	42.5	13.3
FL	158	156	548	540	-1.5
GA	90	88	343	344	0.3
HI	8.8	8.6	29.5	26.3	-10.8
ID	299	329	1,473	1,698	15.3
IL	126	121	517	496	-4.1
IN	137	137	543	541	-0.4
IA	220	215	950	939	-1.2
KS	83	87	325	360	10.8
KY	136	131	404	404	
LA	63	61	176	165	-6.3
ME	42	41	166	167	0.6
MD	86	85	324	345	6.5
MA	25	24	106	102	-3.8
MI	298	297	1,326	1,349	1.7
MN	545	543	2,300	2,322	1.0
MS	41	36	132	129	-2.3
MO	166	158	573	548	-4.4
MT	18	18	73	76	4.1
NE	70	75	266	296	11.3
NV	26	25	126	123	-2.4
NH	20	19	80	78	-2.5
NJ	19	16	70	64	-8.6
NM	218	236	1,093	1,194	9.2
NY	702	700	2,889	2,940	1.8
NC	73	73	303	299	-1.3
ND	50	49	172	167	-2.9
OH	262	259	1,068	1,095	2.5
OK	92	92	304	313	3.0
OR	88	89	394	414	5.1
PA	620	618	2,623	2,689	2.5
RI	2.1	1.9	8.3	7.2	-13.3
SC	24	23	88	89	1.1
SD	102	102	366	385	5.2
TN	101	95	357	345	-3.4
TX	341	348	1,345	1,370	1.9
UT	93	93	381	405	6.3
VT	161	159	656	663	1.1
VA	123	121	449	486	8.2
WA	247	245	1,326	1,368	3.2
WV	18	18	68	69	1.5
WI	1,368	1,361	5,630	5,642	0.2
WY	5.9	6.0	19.5	19.8	1.5
US ³	9,128	9,170	38,901	40,406	3.9

¹ Includes dry cows, excludes heifers not yet fresh.

² Excludes milk sucked by calves.

³ May not add due to rounding.

**Milk Cows and Production: By State and United States,
Preliminary January-March, 1999-2000**

State	Jan-Mar Milk Cows ¹		Jan-Mar Milk Production ²		Change From 1999 Percent
	1999 <i>1,000 Head</i>	2000 <i>1,000 Head</i>	1999 <i>Million Pounds</i>	2000 <i>Million Pounds</i>	
AL	27	27	106	106	
AK	0.9	0.9	3.47	2.95	-15.0
AZ	132	137	778	825	6.0
AR	42	42	135	141	4.4
CA	1,448	1,496	7,296	7,989	9.5
CO	83	84	433	459	6.0
CT	29	27	134	129	-3.7
DE	11.0	11.0	43.9	45.0	2.5
FL	158	157	685	691	0.9
GA	90	88	400	402	0.5
HI	8.6	8.5	30.6	27.9	-8.8
ID	306	333	1,474	1,687	14.5
IL	125	120	528	548	3.8
IN	136	141	551	606	10.0
IA	219	215	971	1,003	3.3
KS	85	88	350	375	7.1
KY	135	130	424	443	4.5
LA	62	61	209	212	1.4
ME	42	40	173	168	-2.9
MD	86	85	335	337	0.6
MA	25	24	105	103	-1.9
MI	293	295	1,315	1,394	6.0
MN	545	540	2,420	2,481	2.5
MS	39	36	160	162	1.3
MO	162	157	598	599	0.2
MT	18	18	74	77	4.1
NE	72	75	277	309	11.6
NV	25	25	118	120	1.7
NH	19	19	81	82	1.2
NJ	18	16	74	64	-13.5
NM	225	238	1,152	1,290	12.0
NY	701	700	2,967	3,038	2.4
NC	73	72	317	316	-0.3
ND	50	50	176	177	0.6
OH	260	259	1,090	1,133	3.9
OK	92	92	325	331	1.8
OR	88	90	403	422	4.7
PA	615	617	2,717	2,849	4.9
RI	2.0	1.9	7.9	7.8	-1.3
SC	24	23	103	102	-1.0
SD	102	102	367	399	8.7
TN	100	96	379	374	-1.3
TX	341	350	1,547	1,614	4.3
UT	91	94	384	410	6.8
VT	162	160	670	706	5.4
VA	122	120	468	502	7.3
WA	248	246	1,347	1,384	2.7
WV	18	17	71	70	-1.4
WI	1,367	1,356	5,713	5,859	2.6
WY	5.9	6.0	18.9	19.8	4.8
US ³	9,128	9,186	40,505	42,591	5.1

¹ Includes dry cows, excludes heifers not yet fresh.

² Excludes milk sucked by calves.

³ May not add due to rounding.

Reliability Statement

Survey Procedures: Primary data used to determine these estimates were obtained from a sample of producers. Individual States maintain a list of all known milk producers and information on the size of their herd. States use all known sources of producers to ensure that their lists are as complete as possible. Generally, all large producers and a sample of small producers are included in the survey. Questionnaires are mailed to producers near the end of the month to obtain data for the first day of the month. Additional reports are obtained by telephone, as needed, to supplement the mail response.

Estimation Procedures: State offices prepare these estimates using survey indications, historic trends, and any available administrative data. Individual State estimates are reviewed by the Agricultural Statistics Board for reasonableness.

Revision Policy: Milk production, rate per cow, and number of cows are subject to revision the following month for monthly States or the following quarter for the quarterly States. Normally, Federal Market Order sales are the main basis for revisions. However, data for all orders are not available in time for this revision. Estimates are again subject to revisions in February each year based on additional administrative data. In the event that additional changes are necessary, a third revision is possible in February the following year. Estimates are again reviewed after data from the five-year Census of Agriculture are available. No revisions are made after that date.

Reliability: Since all operations with dairy animals are not included in the sample, survey estimates are subject to sampling variability. Survey results are also subject to non-sampling errors such as omissions, duplications, and mistakes in reporting, recording, and processing the data. The effects of these errors cannot be measured directly. They are minimized through rigid quality controls in the data collection process and through a careful review of all reported data for consistency and reasonableness.

To assist users in evaluating the reliability of the estimates in this report, the "Root Mean Square Error" is shown for selected items on the next page. The "Root Mean Square Error" is a statistical measure based on past performance and is computed using the differences between first and final estimates. The "Root Mean Square Error" for milk cow inventory estimates over the past 10 January-March quarters is 1.1 percent. This means that chances are 2 out of 3 that the final January-March estimate will not be above or below the current estimate of 9.19 million head by more than 1.1 percent. Chances are 9 out of 10 that the difference will not exceed 2.0 percent.

Reliability of January-March Milk Estimates ¹

Item	Root Mean Square Error	90% Confidence Level		Difference Between First and Latest Estimates			Quarters	
				Average	Smallest	Largest	First Above Latest	First Below Latest
				<i>Million Pounds</i>	<i>Million Pounds</i>	<i>Million Pounds</i>	<i>Number</i>	<i>Number</i>
Milk Production	<i>Percent</i>	<i>Percent</i>	<i>Million Pounds</i>	<i>Million Pounds</i>	<i>Million Pounds</i>	<i>Million Pounds</i>	<i>Number</i>	<i>Number</i>
	0.5	0.8	341	149	34	315	7	3
All Milk Cows	<i>Percent</i>	<i>Percent</i>	<i>1,000 Head</i>	<i>1,000 Head</i>	<i>1,000 Head</i>	<i>1,000 Head</i>	<i>Number</i>	<i>Number</i>
	1.1	2.0	184	83	2	187	8	2

¹ Based on records for the past 10 January-March quarters.

The next "Milk Production" report will be released at 3 p.m. ET on May 16, 2000.

The United States Department of Agriculture (USDA) prohibits discrimination in all its programs on the basis of race, color, national origin, gender, religion, age, disability, political beliefs, sexual orientation, and marital or family status. (Not all prohibited bases apply to all programs.) Persons with disabilities who require alternative means for communication of program information (braille, large print, audiotape, etc.) should contact the USDA's TARGET Center at 202-720-2600 (voice and TDD).

To file a complaint of discrimination, write USDA, Director, Office of Civil Rights, Room 326-W, Whitten Building, 14th and Independence Avenue, SW, Washington, D.C., 20250-9410, or call 202-720-5964 (voice or TDD). USDA is an equal opportunity provider and employer.

ACCESS TO REPORTS!!

For your convenience, there are several ways to obtain NASS reports, data products, and services:

INTERNET ACCESS

All NASS reports are available free of charge on the worldwide Internet. For access, connect to the Internet and go to the NASS Home Page at: <http://www.usda.gov/nass/>. Select "Today's Reports" or Publications and then Reports by Calendar or Publications and then Search, by Title or Subject.

E-MAIL SUBSCRIPTION

There are two options for subscribing via e-mail. All NASS reports are available by subscription free of charge direct to your e-mail address. 1) Starting with the NASS Home Page at <http://www.usda.gov/nass/>, click on **Publications**, then click on the **Subscribe by E-mail** button which takes you to the page describing e-mail delivery of reports. Finally, click on **Go to the Subscription Page** and follow the instructions. 2) If you do NOT have Internet access, send an e-mail message to: usda-reports@usda.mannlib.cornell.edu. In the body of the message type the word: **list**.

AUTOFAX ACCESS

NASSFax service is available for some reports from your fax machine. Please call 202-720-2000, using the handset attached to your fax. Respond to the voice prompts. Document 0411 is a list of available reports.

PRINTED REPORTS OR DATA PRODUCTS

CALL OUR TOLL-FREE ORDER DESK: 800-999-6779 (U.S. and Canada)
Other areas, please call 703-834-0125 FAX: 703-834-0110
(Visa, MasterCard, check, or money order acceptable for payment.)

ASSISTANCE

For **assistance** with general agricultural statistics or further information about NASS or its products or services, contact the **Agricultural Statistics Hotline** at 800-727-9540, 7:30 a.m. to 4:00 p.m. ET, or e-mail: nass@nass.usda.gov.