

Released May 16, 2000, by the National Agricultural Statistics Service (NASS), Agricultural Statistics Board, U.S. Department of Agriculture. For information on "Milk Production" call Steve Anderson at 202-690-3236, office hours 7:00 a.m. to 4:30 p.m. ET.

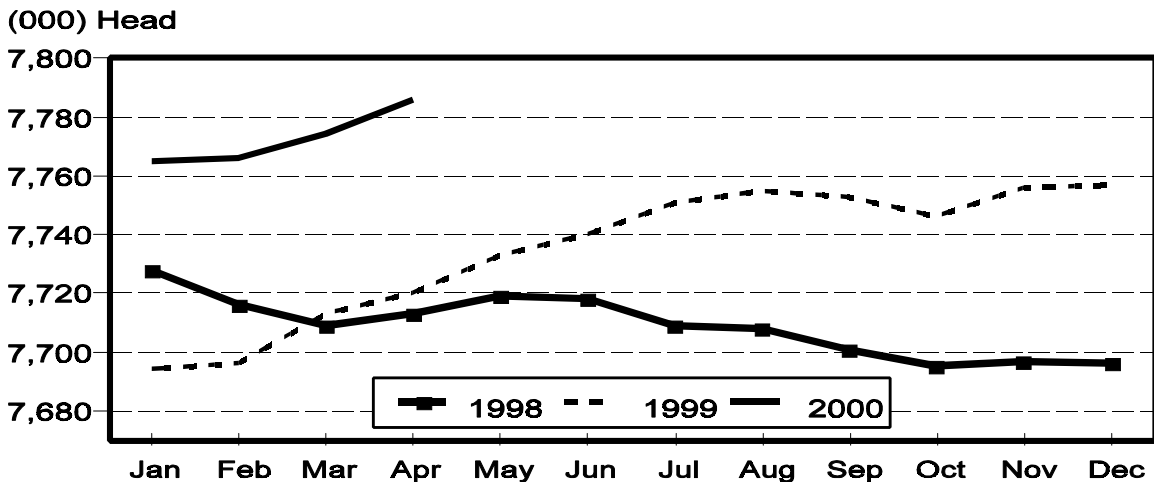
April Milk Production Up 3.7 Percent

Milk production in the 20 major States during April totaled 12.4 billion pounds, up 3.7 percent from production in these same States in April 1999. March revised production, at 12.7 billion pounds was up 3.7 percent from March 1999. The March revision represented a decrease of 0.1 percent or 15 million pounds from last months preliminary production estimate.

Production per cow in the 20 major States averaged 1,598 pounds for April, 44 pounds above April 1999.

The number of cows on farms in the 20 major States was 7.79 million head, 66,000 head more than April 1999 and 12,000 head more than March 2000.

Monthly Milk Cows 20 States



Milk Cows and Production: By Quarter, United States, 1999-2000¹

Quarter	Milk Cows ²		Milk Per Cow ³		Milk Production ³		
	1999	2000	1999	2000	1999	2000	Change From 1999
	<i>1,000 Head</i>	<i>1,000 Head</i>	<i>Pounds</i>	<i>Pounds</i>	<i>Million Pounds</i>	<i>Million Pounds</i>	<i>Percent</i>
Jan-Mar	9,128	9,187	4,437	4,634	40,505	42,576	5.1
Apr-Jun	9,155		4,591		42,029		
Jul-Sep	9,171		4,337		39,771		
Oct-Dec	9,170		4,406		40,406		
Annual	9,156		17,771		162,711		

¹ May not add due to rounding.

² Includes dry cows, excludes heifers not yet fresh.

³ Excludes milk sucked by calves.

Milk Cows and Production: By Month, 20 Selected States, 1999-2000

Month	Milk Cows ¹		Milk Per Cow ²		Milk Production ²		
	1999	2000	1999	2000	1999	2000	Change From 1999
	<i>1,000 Head</i>	<i>1,000 Head</i>	<i>Pounds</i>	<i>Pounds</i>	<i>Million Pounds</i>	<i>Million Pounds</i>	<i>Percent</i>
Jan	7,694	7,765	1,518	1,578	11,679	12,256	4.9
Feb	7,696	7,766	1,404	1,505	10,804	11,691	8.2
Mar	7,713	7,774	1,585	1,631	12,228	12,679	3.7
Apr	7,720	7,786	1,554	1,598	11,998	12,441	3.7
May	7,733		1,610		12,447		
Jun	7,740		1,516		11,737		
Jul	7,751		1,498		11,610		
Aug	7,755		1,487		11,534		
Sep	7,753		1,445		11,200		
Oct	7,746		1,491		11,549		
Nov	7,756		1,459		11,315		
Dec	7,757		1,538		11,928		
Annual	7,735		18,103		140,029		

¹ Includes dry cows, excludes heifers not yet fresh.

² Excludes milk sucked by calves.

Estimated Milk Cows and Production: By Month, United States, 1999-2000

Month	Milk Cows ¹		Milk Per Cow ²		Milk Production ²		
	1999	2000	1999	2000	1999	2000	Change From 1999
	<i>1,000 Head</i>	<i>1,000 Head</i>	<i>Pounds</i>	<i>Pounds</i>	<i>Million Pounds</i>	<i>Million Pounds</i>	<i>Percent</i>
Jan	9,121	9,184	1,494	1,551	13,628	14,246	4.5
Feb	9,123	9,185	1,382	1,480	12,607	13,590	7.8
Mar	9,141	9,194	1,561	1,603	14,270	14,740	3.3
Apr	9,143	9,207	1,524	1,570	13,938	14,451	3.7
May	9,157		1,579		14,458		
Jun	9,166		1,487		13,633		
Jul	9,167		1,467		13,444		
Aug	9,174		1,456		13,357		
Sep	9,171		1,414		12,970		
Oct	9,162		1,464		13,412		
Nov	9,174		1,432		13,140		
Dec	9,175		1,510		13,854		
Annual	9,156		17,771		162,711		

¹ Includes dry cows, excludes heifers not yet fresh.

² Excludes milk sucked by calves.

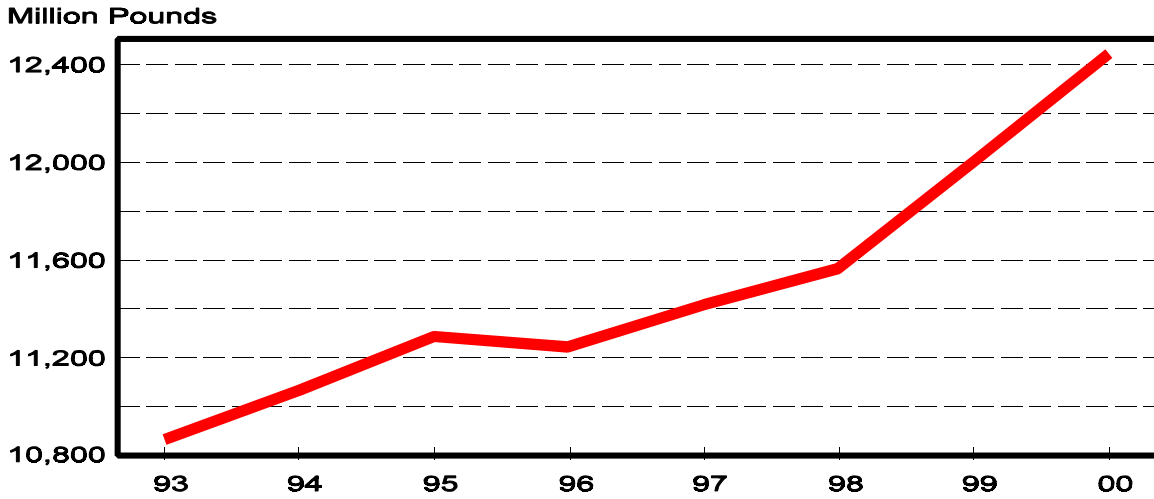
Milk Cows and Production: By State, April 1999-2000

State	Milk Cows ¹		Milk Per Cow ²		Milk Production ²		
	1999	2000	1999	2000	1999	2000	Change From 1999
	<i>1,000 Head</i>	<i>1,000 Head</i>	<i>Pounds</i>	<i>Pounds</i>	<i>Million Pounds</i>	<i>Million Pounds</i>	<i>Percent</i>
AZ	132	138	2,075	2,080	274	287	4.7
CA	1,456	1,507	1,770	1,815	2,577	2,735	6.1
FL	160	158	1,435	1,455	230	230	
ID	312	337	1,640	1,700	512	573	11.9
IL	124	120	1,430	1,520	177	182	2.8
IN	136	146	1,360	1,440	185	210	13.5
IA	218	215	1,500	1,560	327	335	2.4
KY	134	133	1,110	1,220	149	162	8.7
MI	299	291	1,530	1,570	457	457	
MN	545	540	1,505	1,530	820	826	0.7
MO	160	157	1,290	1,330	206	209	1.5
NM	231	241	1,740	1,835	402	442	10.0
NY	700	696	1,460	1,480	1,022	1,030	0.8
OH	260	262	1,420	1,490	369	390	5.7
PA	615	615	1,545	1,590	950	978	2.9
TX	342	350	1,545	1,535	528	537	1.7
VT	161	160	1,420	1,495	229	239	4.4
VA	122	120	1,320	1,425	161	171	6.2
WA	248	246	1,870	1,915	464	471	1.5
WI	1,365	1,354	1,435	1,460	1,959	1,977	0.9
20-State Total	7,720	7,786	1,554	1,598	11,998	12,441	3.7

¹ Includes dry cows, excludes heifers not yet fresh.

² Excludes milk sucked by calves.

**April Milk Production, 1993-2000
20 States**



Milk Cows and Production: By State, March 1999-2000 ¹

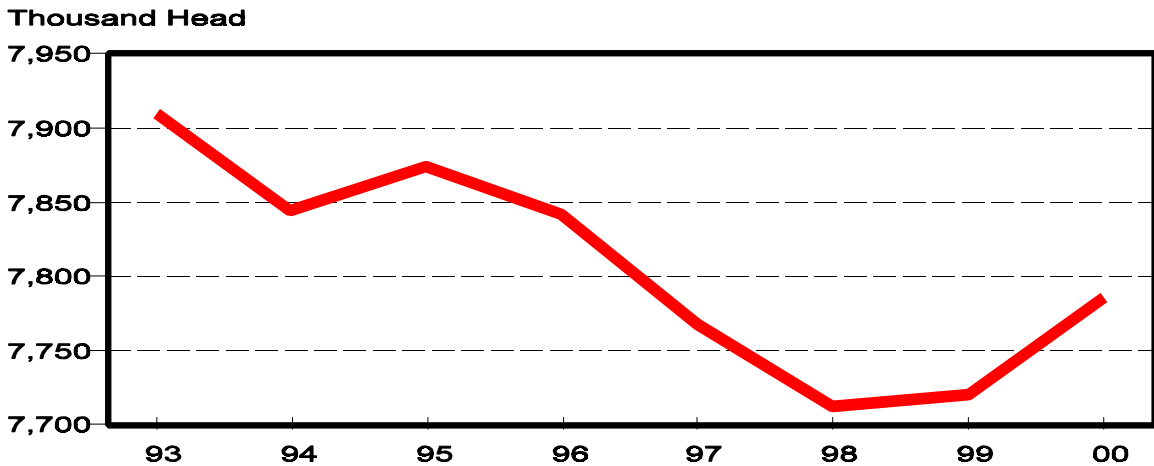
State	Milk Cows ²		Milk per Cow ³		Milk Production ³		
	1999	2000	1999	2000	1999	2000	Change From 1999
	<i>1,000 Head</i>	<i>1,000 Head</i>	<i>Pounds</i>	<i>Pounds</i>	<i>Million Pounds</i>	<i>Million Pounds</i>	<i>Percent</i>
AZ	132	137	2,135	2,115	282	290	2.8
CA	1,452	1,501	1,795	1,825	2,606	2,739	5.1
FL	159	157	1,540	1,530	245	240	-2.0
ID	309	334	1,660	1,720	513	574	11.9
IL	125	120	1,480	1,580	185	190	2.7
IN	136	143	1,380	1,490	188	213	13.3
IA	218	215	1,540	1,610	336	346	3.0
KY	134	132	1,110	1,210	149	160	7.4
MI	296	292	1,565	1,630	463	476	2.8
MN	545	540	1,550	1,585	845	856	1.3
MO	161	156	1,310	1,350	211	211	
NM	231	240	1,770	1,890	409	454	11.0
NY	700	698	1,480	1,495	1,036	1,044	0.8
OH	260	261	1,450	1,535	377	401	6.4
PA	614	618	1,565	1,620	961	1,001	4.2
TX	342	350	1,625	1,640	556	574	3.2
VT	162	160	1,440	1,515	233	242	3.9
VA	122	120	1,335	1,450	163	174	6.7
WA	249	246	1,885	1,940	469	477	1.7
WI	1,366	1,354	1,465	1,490	2,001	2,017	0.8
20-State Total	7,713	7,774	1,585	1,631	12,228	12,679	3.7

¹ 2000 revised.

² Includes dry cows, excludes heifers not yet fresh.

³ Excludes milk sucked by calves.

**April Milk Cows, 1993-2000
20 States**



Reliability Statement

Survey Procedures: Primary data used to determine these estimates were obtained from a sample of producers. Individual States maintain a list of all known milk producers and information on the size of their herd. States use all known sources of producers to ensure that their lists are as complete as possible. Generally, all large producers and a sample of small producers are included in the survey. Questionnaires are mailed to producers near the end of the month to obtain data for the first day of the month. Additional reports are obtained by telephone, as needed, to supplement the mail response.

Estimation Procedures: State offices prepare these estimates using survey indications, historic trends, and any available administrative data. Individual State estimates are reviewed by the Agricultural Statistics Board for reasonableness.

Revision Policy: Milk production, rate per cow, and number of cows are subject to revision the following month for monthly States or the following quarter for the quarterly States. Normally, Federal Market Order sales are the main basis for revisions. However, data for all orders are not available in time for this revision. Estimates are again subject to revisions in February each year based on additional administrative data. In the event that additional changes are necessary, a third revision is possible in February the following year. Estimates are again reviewed after data from the five-year Census of Agriculture are available. No revisions are made after that date.

Reliability: Since all operations with dairy animals are not included in the sample, survey estimates are subject to sampling variability. Survey results are also subject to non-sampling errors such as omissions, duplications, and mistakes in reporting, recording, and processing the data. The effects of these errors cannot be measured directly. They are minimized through rigid quality controls in the data collection process and through a careful review of all reported data for consistency and reasonableness.

To assist users in evaluating the reliability of the estimates in this report, the "Root Mean Square Error" is shown for selected items on the next page. The "Root Mean Square Error" is a statistical measure based on past performance and is computed using the differences between first and final estimates. The "Root Mean Square Error" for milk cow inventory estimates over the past 10 January-March quarters is 1.1 percent. This means that chances are 2 out of 3 that the final January-March estimate will not be above or below the current estimate of 9.19 million head by more than 1.1 percent. Chances are 9 out of 10 that the difference will not exceed 2.0 percent.

Reliability of January-March Milk Estimates ¹

Item	Root Mean Square Error	90% Confidence Level		Difference Between First and Latest Estimates			Quarters	
				Average	Smallest	Largest	First Above Latest	First Below Latest
				<i>Million Pounds</i>	<i>Million Pounds</i>	<i>Million Pounds</i>	<i>Number</i>	<i>Number</i>
Milk Production	<i>Percent</i>	<i>Percent</i>	<i>Million Pounds</i>	<i>Million Pounds</i>	<i>Million Pounds</i>	<i>Million Pounds</i>	<i>Number</i>	<i>Number</i>
	0.5	0.8	341	149	34	315	7	3
All Milk Cows	<i>Percent</i>	<i>Percent</i>	<i>1,000 Head</i>	<i>1,000 Head</i>	<i>1,000 Head</i>	<i>1,000 Head</i>	<i>Number</i>	<i>Number</i>
	1.1	2.0	184	83	2	187	8	2

¹ Based on records for the past 10 January-March quarters.

The next "Milk Production" report will be released at 3 p.m. ET on June 16, 2000.

The United States Department of Agriculture (USDA) prohibits discrimination in all its programs on the basis of race, color, national origin, gender, religion, age, disability, political beliefs, sexual orientation, and marital or family status. (Not all prohibited bases apply to all programs.) Persons with disabilities who require alternative means for communication of program information (braille, large print, audiotape, etc.) should contact the USDA's TARGET Center at 202-720-2600 (voice and TDD).

To file a complaint of discrimination, write USDA, Director, Office of Civil Rights, Room 326-W, Whitten Building, 14th and Independence Avenue, SW, Washington, D.C., 20250-9410, or call 202-720-5964 (voice or TDD). USDA is an equal opportunity provider and employer.

ACCESS TO REPORTS!!

For your convenience, there are several ways to obtain NASS reports, data products, and services:

INTERNET ACCESS

All NASS reports are available free of charge on the worldwide Internet. For access, connect to the Internet and go to the NASS Home Page at: <http://www.usda.gov/nass/>. Select "Today's Reports" or Publications and then Reports by Calendar or Publications and then Search, by Title or Subject.

E-MAIL SUBSCRIPTION

There are two options for subscribing via e-mail. All NASS reports are available by subscription free of charge direct to your e-mail address. 1) Starting with the NASS Home Page at <http://www.usda.gov/nass/>, click on **Publications**, then click on the **Subscribe by E-mail** button which takes you to the page describing e-mail delivery of reports. Finally, click on **Go to the Subscription Page** and follow the instructions. 2) If you do NOT have Internet access, send an e-mail message to: usda-reports@usda.mannlib.cornell.edu. In the body of the message type the word: **list**.

AUTOFAX ACCESS

NASSFax service is available for some reports from your fax machine. Please call 202-720-2000, using the handset attached to your fax. Respond to the voice prompts. Document 0411 is a list of available reports.

PRINTED REPORTS OR DATA PRODUCTS

CALL OUR TOLL-FREE ORDER DESK: 800-999-6779 (U.S. and Canada)
Other areas, please call 703-834-0125 FAX: 703-834-0110
(Visa, MasterCard, check, or money order acceptable for payment.)

ASSISTANCE

For **assistance** with general agricultural statistics or further information about NASS or its products or services, contact the **Agricultural Statistics Hotline** at 800-727-9540, 7:30 a.m. to 4:00 p.m. ET, or e-mail: nass@nass.usda.gov.