

# Milk Production

Released June 16, 2000, by the National Agricultural Statistics Service (NASS), Agricultural Statistics Board, U.S. Department of Agriculture. For information on "Milk Production" call Steve Anderson at 202-690-3236, office hours 7:00 a.m. to 4:30 p.m. ET.

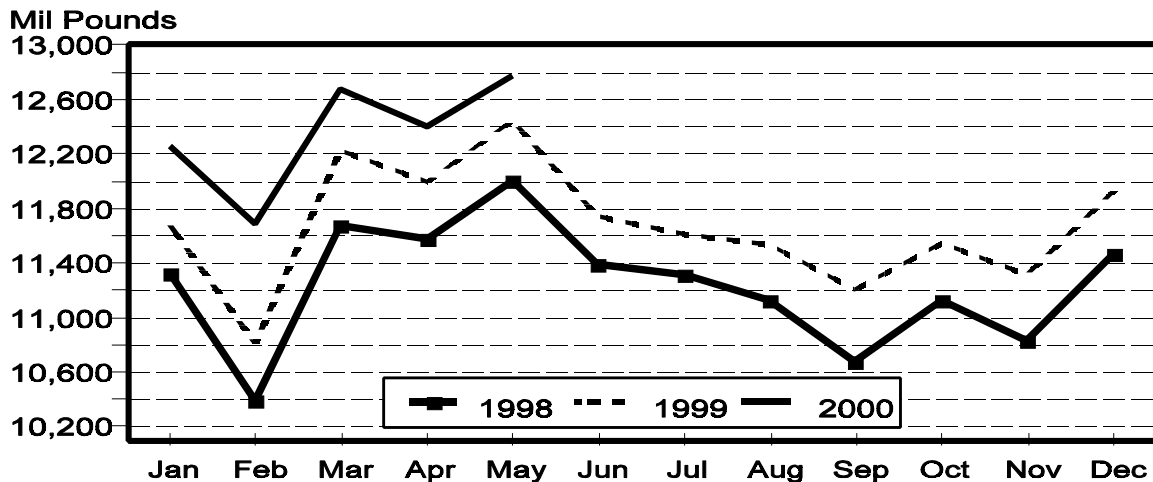
## May Milk Production Up 2.6 Percent

**Milk production** in the 20 major States during May totaled 12.8 billion pounds, up 2.6 percent from production in these same States in May 1999. April revised production, at 12.4 billion pounds was up 3.3 percent from April 1999. The April revision represented a decrease of 0.3 percent or 42 million pounds from last months preliminary production estimate.

**Production per cow** in the 20 major States averaged 1,638 pounds for May, 28 pounds above May 1999.

**The number of cows** on farms in the 20 major States was 7.80 million head, 63,000 head more than May 1999 and 9,000 head more than April 2000.

## Monthly Milk Production 20 States



**Milk Cows and Production: By Quarter, United States, 1999-2000<sup>1</sup>**

Quarter	Milk Cows <sup>2</sup>		Milk Per Cow <sup>3</sup>		Milk Production <sup>3</sup>		
	1999	2000	1999	2000	1999	2000	Change From 1999
	<i>1,000 Head</i>	<i>1,000 Head</i>	<i>Pounds</i>	<i>Pounds</i>	<i>Million Pounds</i>	<i>Million Pounds</i>	<i>Percent</i>
Jan-Mar	9,128	9,187	4,437	4,634	40,505	42,576	5.1
Apr-Jun	9,155		4,591		42,029		
Jul-Sep	9,171		4,337		39,771		
Oct-Dec	9,170		4,406		40,406		
Annual	9,156		17,771		162,711		

<sup>1</sup> May not add due to rounding.

<sup>2</sup> Includes dry cows, excludes heifers not yet fresh.

<sup>3</sup> Excludes milk sucked by calves.

**Milk Cows and Production: By Month, 20 Selected States, 1999-2000**

Month	Milk Cows <sup>1</sup>		Milk Per Cow <sup>2</sup>		Milk Production <sup>2</sup>		
	1999	2000	1999	2000	1999	2000	Change From 1999
	<i>1,000 Head</i>	<i>1,000 Head</i>	<i>Pounds</i>	<i>Pounds</i>	<i>Million Pounds</i>	<i>Million Pounds</i>	<i>Percent</i>
Jan	7,694	7,765	1,518	1,578	11,679	12,256	4.9
Feb	7,696	7,766	1,404	1,505	10,804	11,691	8.2
Mar	7,713	7,774	1,585	1,631	12,228	12,679	3.7
Apr	7,720	7,787	1,554	1,592	11,998	12,399	3.3
May	7,733	7,796	1,610	1,638	12,447	12,771	2.6
Jun	7,740		1,516		11,737		
Jul	7,751		1,498		11,610		
Aug	7,755		1,487		11,534		
Sep	7,753		1,445		11,200		
Oct	7,746		1,491		11,549		
Nov	7,756		1,459		11,315		
Dec	7,757		1,538		11,928		
Annual	7,735		18,103		140,029		

<sup>1</sup> Includes dry cows, excludes heifers not yet fresh.

<sup>2</sup> Excludes milk sucked by calves.

**Estimated Milk Cows and Production: By Month, United States, 1999-2000**

Month	Milk Cows <sup>1</sup>		Milk Per Cow <sup>2</sup>		Milk Production <sup>2</sup>		
	1999	2000	1999	2000	1999	2000	Change From 1999
	<i>1,000 Head</i>	<i>1,000 Head</i>	<i>Pounds</i>	<i>Pounds</i>	<i>Million Pounds</i>	<i>Million Pounds</i>	<i>Percent</i>
Jan	9,121	9,184	1,494	1,551	13,628	14,246	4.5
Feb	9,123	9,185	1,382	1,480	12,607	13,590	7.8
Mar	9,141	9,194	1,561	1,603	14,270	14,740	3.3
Apr	9,143	9,208	1,524	1,564	13,938	14,402	3.3
May	9,157	9,219	1,579	1,609	14,458	14,834	2.6
Jun	9,166		1,487		13,633		
Jul	9,167		1,467		13,444		
Aug	9,174		1,456		13,357		
Sep	9,171		1,414		12,970		
Oct	9,162		1,464		13,412		
Nov	9,174		1,432		13,140		
Dec	9,175		1,510		13,854		
Annual	9,156		17,771		162,711		

<sup>1</sup> Includes dry cows, excludes heifers not yet fresh.

<sup>2</sup> Excludes milk sucked by calves.

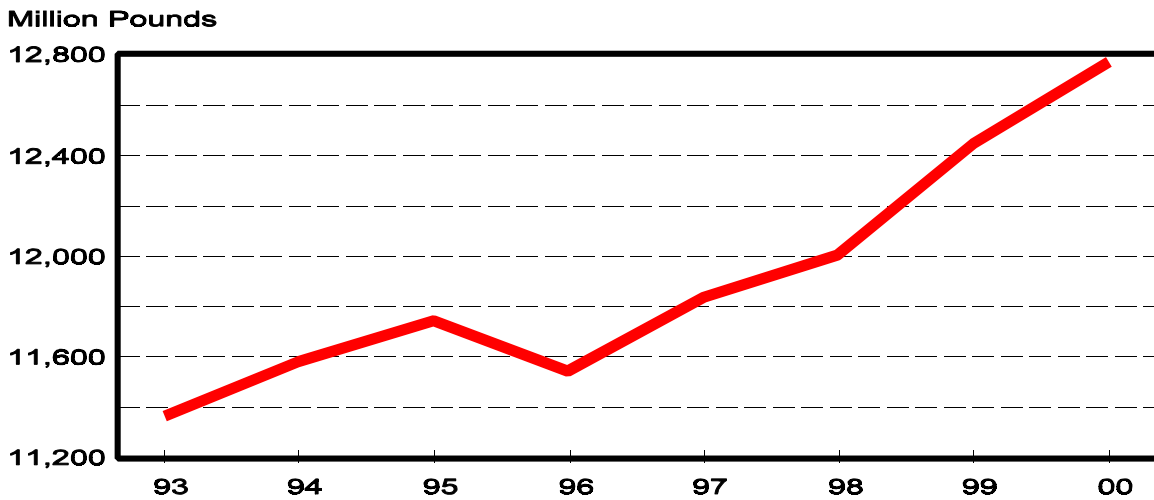
**Milk Cows and Production: By State, May 1999-2000**

State	Milk Cows <sup>1</sup>		Milk Per Cow <sup>2</sup>		Milk Production <sup>2</sup>		
	1999	2000	1999	2000	1999	2000	Change From 1999
	<i>1,000 Head</i>	<i>1,000 Head</i>	<i>Pounds</i>	<i>Pounds</i>	<i>Million Pounds</i>	<i>Million Pounds</i>	<i>Percent</i>
AZ	134	138	2,060	2,110	276	291	5.4
CA	1,459	1,513	1,825	1,845	2,663	2,791	4.8
FL	160	158	1,400	1,460	224	231	3.1
ID	314	342	1,710	1,790	537	612	14.0
IL	123	120	1,490	1,550	183	186	1.6
IN	136	147	1,445	1,480	197	218	10.7
IA	217	215	1,550	1,610	336	346	3.0
KY	133	133	1,120	1,185	149	158	6.0
MI	303	291	1,600	1,610	485	469	-3.3
MN	545	540	1,545	1,555	842	840	-0.2
MO	160	156	1,300	1,320	208	206	-1.0
NM	232	246	1,805	1,910	419	470	12.2
NY	702	690	1,530	1,520	1,074	1,049	-2.3
OH	260	262	1,530	1,550	398	406	2.0
PA	615	615	1,605	1,615	987	993	0.6
TX	345	350	1,515	1,520	523	532	1.7
VT	160	160	1,505	1,555	241	249	3.3
VA	122	120	1,345	1,425	164	171	4.3
WA	247	246	1,935	1,985	478	488	2.1
WI	1,366	1,354	1,510	1,525	2,063	2,065	0.1
20-State Total	7,733	7,796	1,610	1,638	12,447	12,771	2.6

<sup>1</sup> Includes dry cows, excludes heifers not yet fresh.

<sup>2</sup> Excludes milk sucked by calves.

**May Milk Production, 1993-2000  
20 States**



**Milk Cows and Production: By State, April 1999-2000 <sup>1</sup>**

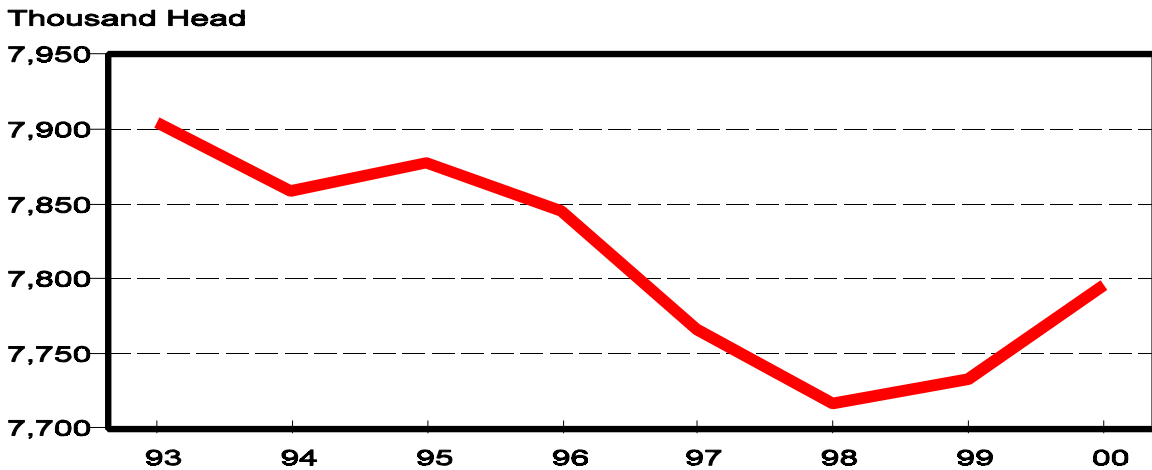
State	Milk Cows <sup>2</sup>		Milk per Cow <sup>3</sup>		Milk Production <sup>3</sup>		
	1999	2000	1999	2000	1999	2000	Change From 1999
	<i>1,000 Head</i>	<i>1,000 Head</i>	<i>Pounds</i>	<i>Pounds</i>	<i>Million Pounds</i>	<i>Million Pounds</i>	<i>Percent</i>
AZ	132	138	2,075	2,080	274	287	4.7
CA	1,456	1,507	1,770	1,810	2,577	2,728	5.9
FL	160	158	1,435	1,470	230	232	0.9
ID	312	339	1,640	1,710	512	580	13.3
IL	124	120	1,430	1,520	177	182	2.8
IN	136	146	1,360	1,440	185	210	13.5
IA	218	215	1,500	1,560	327	335	2.4
KY	134	133	1,110	1,190	149	158	6.0
MI	299	291	1,530	1,570	457	457	
MN	545	540	1,505	1,530	820	826	0.7
MO	160	157	1,290	1,330	206	209	1.5
NM	231	241	1,740	1,835	402	442	10.0
NY	700	695	1,460	1,460	1,022	1,015	-0.7
OH	260	262	1,420	1,490	369	390	5.7
PA	615	615	1,545	1,590	950	978	2.9
TX	342	350	1,545	1,535	528	537	1.7
VT	161	160	1,420	1,475	229	236	3.1
VA	122	120	1,320	1,410	161	169	5.0
WA	248	246	1,870	1,915	464	471	1.5
WI	1,365	1,354	1,435	1,445	1,959	1,957	-0.1
20-State Total	7,720	7,787	1,554	1,592	11,998	12,399	3.3

<sup>1</sup> 2000 revised.

<sup>2</sup> Includes dry cows, excludes heifers not yet fresh.

<sup>3</sup> Excludes milk sucked by calves.

**May Milk Cows, 1993-2000  
20 States**



## Reliability Statement

**Survey Procedures:** Primary data used to determine these estimates were obtained from a sample of producers. Individual States maintain a list of all known milk producers and information on the size of their herd. States use all known sources of producers to ensure that their lists are as complete as possible. Generally, all large producers and a sample of small producers are included in the survey. Questionnaires are mailed to producers near the end of the month to obtain data for the first day of the month. Additional reports are obtained by telephone, as needed, to supplement the mail response.

**Estimation Procedures:** State offices prepare these estimates using survey indications, historic trends, and any available administrative data. Individual State estimates are reviewed by the Agricultural Statistics Board for reasonableness.

**Revision Policy:** Milk production, rate per cow, and number of cows are subject to revision the following month for monthly States or the following quarter for the quarterly States. Normally, Federal Market Order sales are the main basis for revisions. However, data for all orders are not available in time for this revision. Estimates are again subject to revisions in February each year based on additional administrative data. In the event that additional changes are necessary, a third revision is possible in February the following year. Estimates are again reviewed after data from the five-year Census of Agriculture are available. No revisions are made after that date.

**Reliability:** Since all operations with dairy animals are not included in the sample, survey estimates are subject to sampling variability. Survey results are also subject to non-sampling errors such as omissions, duplications, and mistakes in reporting, recording, and processing the data. The effects of these errors cannot be measured directly. They are minimized through rigid quality controls in the data collection process and through a careful review of all reported data for consistency and reasonableness.

To assist users in evaluating the reliability of the estimates in this report, the "Root Mean Square Error" is shown for selected items on the next page. The "Root Mean Square Error" is a statistical measure based on past performance and is computed using the differences between first and final estimates. The "Root Mean Square Error" for milk cow inventory estimates over the past 10 January-March quarters is 1.1 percent. This means that chances are 2 out of 3 that the final January-March estimate will not be above or below the current estimate of 9.19 million head by more than 1.1 percent. Chances are 9 out of 10 that the difference will not exceed 2.0 percent.

**Reliability of January-March Milk Estimates <sup>1</sup>**

Item	Root Mean Square Error	90% Confidence Level		Difference Between First and Latest Estimates			Quarters	
				Average	Smallest	Largest	First Above Latest	First Below Latest
				<i>Million Pounds</i>	<i>Million Pounds</i>	<i>Million Pounds</i>	<i>Number</i>	<i>Number</i>
Milk Production	<i>Percent</i>	<i>Percent</i>	<i>Million Pounds</i>	<i>Million Pounds</i>	<i>Million Pounds</i>	<i>Million Pounds</i>	<i>Number</i>	<i>Number</i>
	0.5	0.8	341	149	34	315	7	3
All Milk Cows	<i>Percent</i>	<i>Percent</i>	<i>1,000 Head</i>	<i>1,000 Head</i>	<i>1,000 Head</i>	<i>1,000 Head</i>	<i>Number</i>	<i>Number</i>
	1.1	2.0	184	83	2	187	8	2

<sup>1</sup> Based on records for the past 10 January-March quarters.

The next "Milk Production" report will be released at 3 p.m. ET on July 17, 2000.

The United States Department of Agriculture (USDA) prohibits discrimination in all its programs on the basis of race, color, national origin, gender, religion, age, disability, political beliefs, sexual orientation, and marital or family status. (Not all prohibited bases apply to all programs.) Persons with disabilities who require alternative means for communication of program information (braille, large print, audiotape, etc.) should contact the USDA's TARGET Center at 202-720-2600 (voice and TDD).

To file a complaint of discrimination, write USDA, Director, Office of Civil Rights, Room 326-W, Whitten Building, 14th and Independence Avenue, SW, Washington, D.C., 20250-9410, or call 202-720-5964 (voice or TDD). USDA is an equal opportunity provider and employer.

## ACCESS TO REPORTS!!

---

For your convenience, there are several ways to obtain NASS reports, data products, and services:

### INTERNET ACCESS

All NASS reports are available free of charge on the worldwide Internet. For access, connect to the Internet and go to the NASS Home Page at: <http://www.usda.gov/nass/>. Select "Today's Reports" or Publications and then Reports by Calendar or Publications and then Search, by Title or Subject.

### E-MAIL SUBSCRIPTION

There are two options for subscribing via e-mail. All NASS reports are available by subscription free of charge direct to your e-mail address. 1) Starting with the NASS Home Page at <http://www.usda.gov/nass/>, click on **Publications**, then click on the **Subscribe by E-mail** button which takes you to the page describing e-mail delivery of reports. Finally, click on **Go to the Subscription Page** and follow the instructions. 2) If you do NOT have Internet access, send an e-mail message to: [usda-reports@usda.mannlib.cornell.edu](mailto:usda-reports@usda.mannlib.cornell.edu). In the body of the message type the word: **list**.

### AUTOFAX ACCESS

NASSFax service is available for some reports from your fax machine. Please call 202-720-2000, using the handset attached to your fax. Respond to the voice prompts. Document 0411 is a list of available reports.

-----

### PRINTED REPORTS OR DATA PRODUCTS

CALL OUR TOLL-FREE ORDER DESK: 800-999-6779 (U.S. and Canada)  
Other areas, please call 703-834-0125 FAX: 703-834-0110  
(Visa, MasterCard, check, or money order acceptable for payment.)

-----

### ASSISTANCE

For **assistance** with general agricultural statistics or further information about NASS or its products or services, contact the **Agricultural Statistics Hotline** at 800-727-9540, 7:30 a.m. to 4:00 p.m. ET, or e-mail: [nass@nass.usda.gov](mailto:nass@nass.usda.gov).