

Released July 17, 2000, by the National Agricultural Statistics Service (NASS), Agricultural Statistics Board, U.S. Department of Agriculture. For information on "Milk Production" call Steve Anderson at 202-690-3236, office hours 7:00 a.m. to 4:30 p.m. ET.

June Milk Production Up 2.8 Percent

Milk production in the 20 major States during June totaled 12.1 billion pounds, up 2.8 percent from production in these same States in June 1999. The May revision represented a decrease of 0.2 percent or 28 million pounds from last months preliminary production estimate.

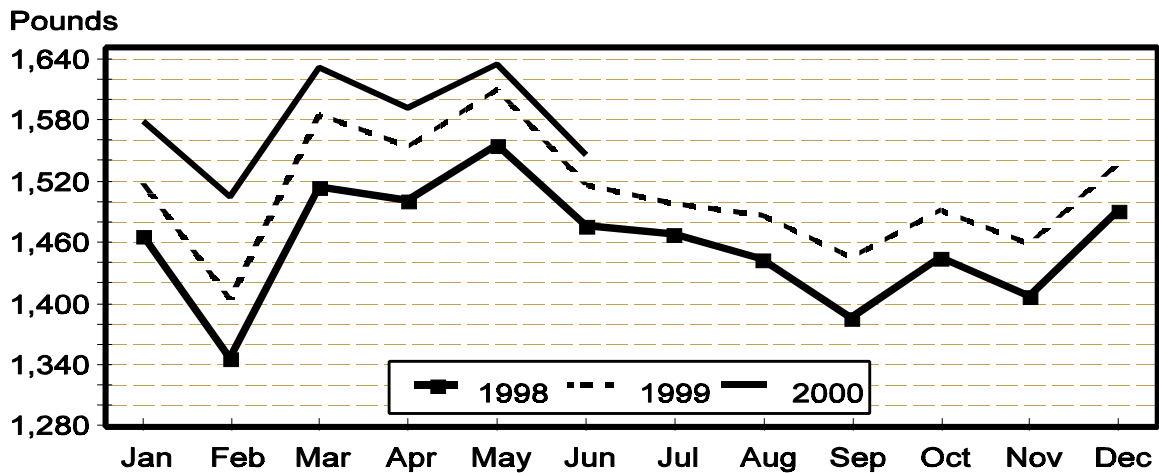
Production per cow in the 20 major States averaged 1,546 pounds for June, 30 pounds above June 1999.

The number of cows on farms in the 20 major States was 7.81 million head, 65,000 head more than June 1999 and 10,000 head more than May 2000.

April-June Milk Production Up 2.6 Percent

The quarterly production of milk for the U.S. was 43.1 billion pounds, 2.6 percent above the April-June period last year. The average number of milk cows in the U.S. during the April-June quarter was 9.21 million head, 58,000 head more than the same period last year.

Monthly Milk per Cow 20 States



Milk Cows and Production: By Quarter, United States, 1999-2000¹

Quarter	Milk Cows ²		Milk Per Cow ³		Milk Production ³		
	1999	2000	1999	2000	1999	2000	Change From 1999
	<i>1,000 Head</i>	<i>1,000 Head</i>	<i>Pounds</i>	<i>Pounds</i>	<i>Million Pounds</i>	<i>Million Pounds</i>	<i>Percent</i>
Jan-Mar	9,128	9,187	4,437	4,636	40,505	42,593	5.2
Apr-Jun	9,155	9,213	4,591	4,682	42,029	43,137	2.6
Jul-Sep	9,171		4,337		39,771		
Oct-Dec	9,170		4,406		40,406		
Annual	9,156		17,771		162,711		

¹ May not add due to rounding.

² Includes dry cows, excludes heifers not yet fresh.

³ Excludes milk sucked by calves.

Milk Cows and Production: By Month, 20 Selected States, 1999-2000

Month	Milk Cows ¹		Milk Per Cow ²		Milk Production ²		
	1999	2000	1999	2000	1999	2000	Change From 1999
	<i>1,000 Head</i>	<i>1,000 Head</i>	<i>Pounds</i>	<i>Pounds</i>	<i>Million Pounds</i>	<i>Million Pounds</i>	<i>Percent</i>
Jan	7,694	7,765	1,518	1,578	11,679	12,256	4.9
Feb	7,696	7,766	1,404	1,505	10,804	11,691	8.2
Mar	7,713	7,774	1,585	1,631	12,228	12,679	3.7
Apr	7,720	7,787	1,554	1,592	11,998	12,399	3.3
May	7,733	7,795	1,610	1,635	12,447	12,743	2.4
Jun	7,740	7,805	1,516	1,546	11,737	12,070	2.8
Jul	7,751		1,498		11,610		
Aug	7,755		1,487		11,534		
Sep	7,753		1,445		11,200		
Oct	7,746		1,491		11,549		
Nov	7,756		1,459		11,315		
Dec	7,757		1,538		11,928		
Annual	7,735		18,103		140,029		

¹ Includes dry cows, excludes heifers not yet fresh.

² Excludes milk sucked by calves.

Estimated Milk Cows and Production: By Month, United States, 1999-2000

Month	Milk Cows ¹		Milk Per Cow ²		Milk Production ²		
	1999	2000	1999	2000	1999	2000	Change From 1999
	<i>1,000 Head</i>	<i>1,000 Head</i>	<i>Pounds</i>	<i>Pounds</i>	<i>Million Pounds</i>	<i>Million Pounds</i>	<i>Percent</i>
Jan	9,121	9,183	1,494	1,552	13,628	14,252	4.6
Feb	9,123	9,185	1,382	1,480	12,607	13,596	7.8
Mar	9,141	9,194	1,561	1,604	14,270	14,745	3.3
Apr	9,143	9,202	1,524	1,562	13,938	14,373	3.1
May	9,157	9,213	1,579	1,603	14,458	14,772	2.2
Jun	9,166	9,224	1,487	1,517	13,633	13,992	2.6
Jul	9,167		1,467		13,444		
Aug	9,174		1,456		13,357		
Sep	9,171		1,414		12,970		
Oct	9,162		1,464		13,412		
Nov	9,174		1,432		13,140		
Dec	9,175		1,510		13,854		
Annual	9,156		17,771		162,711		

¹ Includes dry cows, excludes heifers not yet fresh.

² Excludes milk sucked by calves.

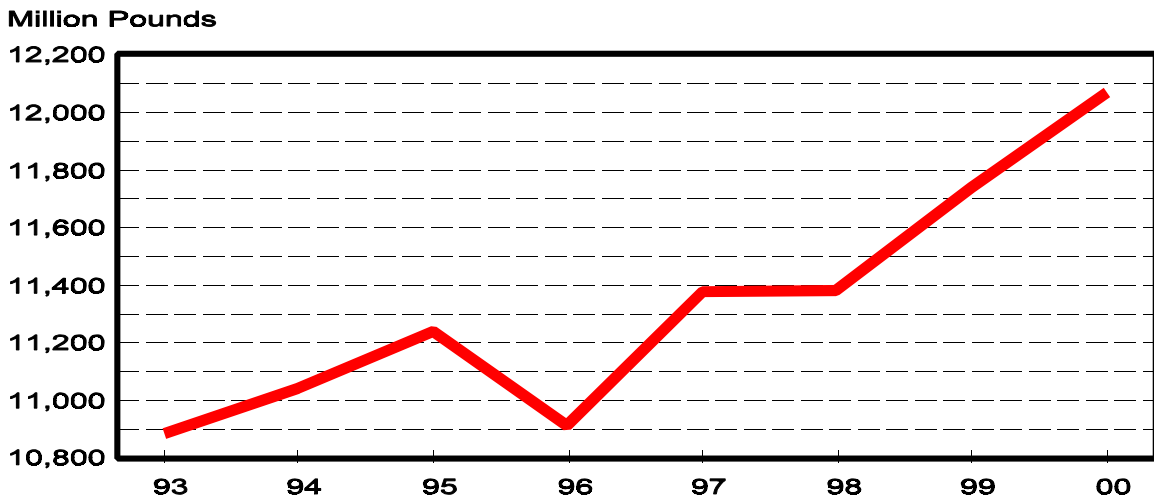
Milk Cows and Production: By State, June 1999-2000

State	Milk Cows ¹		Milk Per Cow ²		Milk Production ²		
	1999	2000	1999	2000	1999	2000	Change From 1999
	<i>1,000 Head</i>	<i>1,000 Head</i>	<i>Pounds</i>	<i>Pounds</i>	<i>Million Pounds</i>	<i>Million Pounds</i>	<i>Percent</i>
AZ	134	138	1,830	1,890	245	261	6.5
CA	1,464	1,521	1,710	1,755	2,503	2,669	6.6
FL	159	158	1,290	1,320	205	209	2.0
ID	317	349	1,690	1,760	536	614	14.6
IL	122	120	1,420	1,440	173	173	
IN	136	148	1,340	1,420	182	210	15.4
IA	217	215	1,460	1,530	317	329	3.8
KY	133	132	1,000	1,030	133	136	2.3
MI	303	292	1,530	1,560	464	456	-1.7
MN	545	535	1,475	1,495	804	800	-0.5
MO	159	155	1,140	1,200	181	186	2.8
NM	234	249	1,710	1,790	400	446	11.5
NY	702	690	1,460	1,460	1,025	1,007	-1.8
OH	260	262	1,450	1,470	377	385	2.1
PA	614	617	1,495	1,495	918	922	0.4
TX	346	350	1,330	1,340	460	469	2.0
VT	159	160	1,445	1,460	230	234	1.7
VA	121	120	1,240	1,265	150	152	1.3
WA	247	247	1,880	1,910	464	472	1.7
WI	1,368	1,347	1,440	1,440	1,970	1,940	-1.5
20-State Total	7,740	7,805	1,516	1,546	11,737	12,070	2.8

¹ Includes dry cows, excludes heifers not yet fresh.

² Excludes milk sucked by calves.

**June Milk Production, 1993-2000
20 States**



Milk Cows and Production: By State, May 1999-2000¹

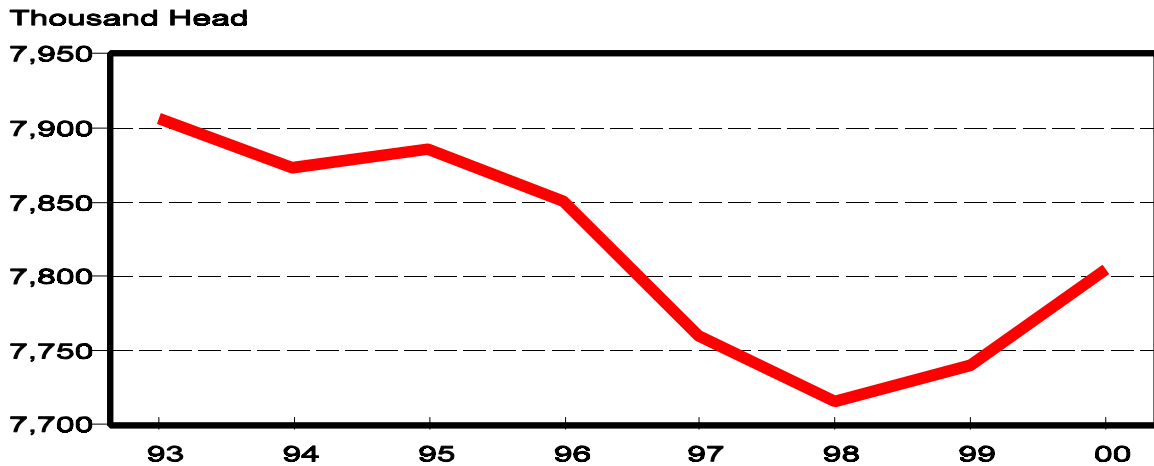
State	Milk Cows ²		Milk per Cow ³		Milk Production ³		
	1999	2000	1999	2000	1999	2000	Change From 1999
	<i>1,000 Head</i>	<i>1,000 Head</i>	<i>Pounds</i>	<i>Pounds</i>	<i>Million Pounds</i>	<i>Million Pounds</i>	<i>Percent</i>
AZ	134	138	2,060	2,095	276	289	4.7
CA	1,459	1,513	1,825	1,850	2,663	2,799	5.1
FL	160	158	1,400	1,460	224	231	3.1
ID	314	344	1,710	1,800	537	619	15.3
IL	123	120	1,490	1,550	183	186	1.6
IN	136	147	1,445	1,480	197	218	10.7
IA	217	215	1,550	1,610	336	346	3.0
KY	133	133	1,120	1,130	149	150	0.7
MI	303	291	1,600	1,610	485	469	-3.3
MN	545	540	1,545	1,555	842	840	-0.2
MO	160	156	1,300	1,320	208	206	-1.0
NM	232	246	1,805	1,910	419	470	12.2
NY	702	690	1,530	1,530	1,074	1,056	-1.7
OH	260	262	1,530	1,550	398	406	2.0
PA	615	615	1,605	1,615	987	993	0.6
TX	345	350	1,515	1,520	523	532	1.7
VT	160	160	1,505	1,530	241	245	1.7
VA	122	120	1,345	1,390	164	167	1.8
WA	247	247	1,935	1,980	478	489	2.3
WI	1,366	1,350	1,510	1,505	2,063	2,032	-1.5
20-State Total	7,733	7,795	1,610	1,635	12,447	12,743	2.4

¹ 2000 revised.

² Includes dry cows, excludes heifers not yet fresh.

³ Excludes milk sucked by calves.

**June Milk Cows, 1993-2000
20 States**



**Milk Cows and Production: By State and United States,
Revised January-March, 1999-2000**

State	Jan-Mar Milk Cows ¹		Jan-Mar Milk Production ²		Change From 1999 Percent
	1999 <i>1,000 Head</i>	2000 <i>1,000 Head</i>	1999 <i>Million Pounds</i>	2000 <i>Million Pounds</i>	
AL	27	26	106	103	-2.8
AK	0.9	0.9	3.47	2.95	-15.0
AZ	132	137	778	824	5.9
AR	42	42	135	141	4.4
CA	1,448	1,496	7,296	8,005	9.7
CO	83	85	433	466	7.6
CT	29	27	134	129	-3.7
DE	11.0	11.0	43.9	45.0	2.5
FL	158	157	685	686	0.1
GA	90	88	400	402	0.5
HI	8.6	8.5	30.6	27.9	-8.8
ID	306	333	1,474	1,683	14.2
IL	125	120	528	548	3.8
IN	136	141	551	606	10.0
IA	219	215	971	1,003	3.3
KS	85	88	350	375	7.1
KY	135	131	424	448	5.7
LA	62	61	209	212	1.4
ME	42	40	173	171	-1.2
MD	86	85	335	337	0.6
MA	25	24	105	103	-1.9
MI	293	295	1,315	1,397	6.2
MN	545	540	2,420	2,481	2.5
MS	39	36	160	162	1.3
MO	162	157	598	599	0.2
MT	18	18	74	77	4.1
NE	72	75	277	309	11.6
NV	25	25	118	120	1.7
NH	19	19	81	81	
NJ	18	16	74	69	-6.8
NM	225	238	1,152	1,288	11.8
NY	701	699	2,967	3,018	1.7
NC	73	72	317	316	-0.3
ND	50	50	176	177	0.6
OH	260	260	1,090	1,145	5.0
OK	92	92	325	331	1.8
OR	88	90	403	422	4.7
PA	615	617	2,717	2,849	4.9
RI	2.0	1.9	7.9	7.7	-2.5
SC	24	23	103	102	-1.0
SD	102	102	367	399	8.7
TN	100	96	379	380	0.3
TX	341	350	1,547	1,614	4.3
UT	91	94	384	410	6.8
VT	162	160	670	705	5.2
VA	122	120	468	505	7.9
WA	248	246	1,347	1,384	2.7
WV	18	17	71	70	-1.4
WI	1,367	1,356	5,713	5,838	2.2
WY	5.9	6.0	18.9	19.8	4.8
US ³	9,128	9,187	40,505	42,593	5.2

¹ Includes dry cows, excludes heifers not yet fresh.

² Excludes milk sucked by calves.

³ May not add due to rounding.

**Milk Cows and Production: By State and United States,
Preliminary April-June, 1999-2000**

State	Apr-Jun Milk Cows ¹		Apr-Jun Milk Production ²		Change From 1999 Percent
	1999 <i>1,000 Head</i>	2000 <i>1,000 Head</i>	1999 <i>Million Pounds</i>	2000 <i>Million Pounds</i>	
AL	27	25	100	92	-8.0
AK	1.0	0.9	3.60	3.41	-5.3
AZ	133	138	795	837	5.3
AR	42	42	138	142	2.9
CA	1,460	1,514	7,743	8,196	5.9
CO	82	85	420	470	11.9
CT	29	26	136	123	-9.6
DE	11.0	11.0	43.6	43.8	0.5
FL	160	158	659	672	2.0
GA	90	88	392	384	-2.0
HI	8.5	8.3	32.5	32.0	-1.5
ID	314	344	1,585	1,813	14.4
IL	123	120	533	541	1.5
IN	136	147	564	638	13.1
IA	217	215	980	1,010	3.1
KS	86	89	360	380	5.6
KY	133	133	431	444	3.0
LA	61	59	192	189	-1.6
ME	42	40	180	171	-5.0
MD	85	84	353	325	-7.9
MA	25	24	109	103	-5.5
MI	302	291	1,406	1,382	-1.7
MN	545	538	2,466	2,466	
MS	38	36	149	146	-2.0
MO	160	156	595	601	1.0
MT	18	18	77	79	2.6
NE	73	75	285	315	10.5
NV	25	25	128	123	-3.9
NH	19	19	83	81	-2.4
NJ	18	16	74	69	-6.8
NM	232	245	1,221	1,358	11.2
NY	701	692	3,121	3,078	-1.4
NC	73	72	311	303	-2.6
ND	49	51	178	190	6.7
OH	260	262	1,144	1,181	3.2
OK	92	91	317	331	4.4
OR	89	90	425	430	1.2
PA	615	616	2,855	2,893	1.3
RI	2.0	1.8	8.2	7.6	-7.3
SC	24	23	98	98	
SD	102	103	380	413	8.7
TN	98	95	373	365	-2.1
TX	344	350	1,511	1,538	1.8
UT	92	96	412	428	3.9
VT	160	160	700	715	2.1
VA	122	120	475	488	2.7
WA	247	247	1,406	1,432	1.8
WV	18	17	69	67	-2.9
WI	1,366	1,350	5,992	5,929	-1.1
WY	5.9	5.9	20.1	20.7	3.0
US ³	9,155	9,213	42,029	43,137	2.6

¹ Includes dry cows, excludes heifers not yet fresh.

² Excludes milk sucked by calves.

³ May not add due to rounding.

Reliability Statement

Survey Procedures: Primary data used to determine these estimates were obtained from a sample of producers. Individual States maintain a list of all known milk producers and information on the size of their herd. States use all known sources of producers to ensure that their lists are as complete as possible. Generally, all large producers and a sample of small producers are included in the survey. Questionnaires are mailed to producers near the end of the month to obtain data for the first day of the month. Additional reports are obtained by telephone, as needed, to supplement the mail response.

Estimation Procedures: State offices prepare these estimates using survey indications, historic trends, and any available administrative data. Individual State estimates are reviewed by the Agricultural Statistics Board for reasonableness.

Revision Policy: Milk production, rate per cow, and number of cows are subject to revision the following month for monthly States or the following quarter for the quarterly States. Normally, Federal Market Order sales are the main basis for revisions. However, data for all orders are not available in time for this revision. Estimates are again subject to revisions in February each year based on additional administrative data. In the event that additional changes are necessary, a third revision is possible in February the following year. Estimates are again reviewed after data from the five-year Census of Agriculture are available. No revisions are made after that date.

Reliability: Since all operations with dairy animals are not included in the sample, survey estimates are subject to sampling variability. Survey results are also subject to non-sampling errors such as omissions, duplications, and mistakes in reporting, recording, and processing the data. The effects of these errors cannot be measured directly. They are minimized through rigid quality controls in the data collection process and through a careful review of all reported data for consistency and reasonableness.

To assist users in evaluating the reliability of the estimates in this report, the "Root Mean Square Error" is shown for selected items on the next page. The "Root Mean Square Error" is a statistical measure based on past performance and is computed using the differences between first and final estimates. The "Root Mean Square Error" for milk cow inventory estimates over the past 10 April-June quarters is 1.1 percent. This means that chances are 2 out of 3 that the final April-June estimate will not be above or below the current estimate of 9.21 million head by more than 1.1 percent. Chances are 9 out of 10 that the difference will not exceed 2.1 percent.

Reliability of April-June Milk Estimates ¹

Item	Root Mean Square Error	90% Confidence Level		Difference Between First and Latest Estimates			Quarters	
				Average	Smallest	Largest	First Above Latest	First Below Latest
	<i>Percent</i>	<i>Percent</i>	<i>Million Pounds</i>	<i>Million Pounds</i>	<i>Million Pounds</i>	<i>Million Pounds</i>	<i>Number</i>	<i>Number</i>
Milk Production	0.4	0.8	345	142	3	264	10	0
	<i>Percent</i>	<i>Percent</i>	<i>1,000 Head</i>	<i>1,000 Head</i>	<i>1,000 Head</i>	<i>1,000 Head</i>	<i>Number</i>	<i>Number</i>
All Milk Cows	1.1	2.1	193	86	4	188	7	3

¹ Based on records for the past 10 April-June quarters.

The next "Milk Production" report will be released at 3 p.m. ET on August 16, 2000.

The United States Department of Agriculture (USDA) prohibits discrimination in all its programs on the basis of race, color, national origin, gender, religion, age, disability, political beliefs, sexual orientation, and marital or family status. (Not all prohibited bases apply to all programs.) Persons with disabilities who require alternative means for communication of program information (braille, large print, audiotape, etc.) should contact the USDA's TARGET Center at 202-720-2600 (voice and TDD).

To file a complaint of discrimination, write USDA, Director, Office of Civil Rights, Room 326-W, Whitten Building, 14th and Independence Avenue, SW, Washington, D.C., 20250-9410, or call 202-720-5964 (voice or TDD). USDA is an equal opportunity provider and employer.

ACCESS TO REPORTS!!

For your convenience, there are several ways to obtain NASS reports, data products, and services:

INTERNET ACCESS

All NASS reports are available free of charge on the worldwide Internet. For access, connect to the Internet and go to the NASS Home Page at: <http://www.usda.gov/nass/>. Select "Today's Reports" or Publications and then Reports by Calendar or Publications and then Search, by Title or Subject.

E-MAIL SUBSCRIPTION

There are two options for subscribing via e-mail. All NASS reports are available by subscription free of charge direct to your e-mail address. 1) Starting with the NASS Home Page at <http://www.usda.gov/nass/>, click on **Publications**, then click on the **Subscribe by E-mail** button which takes you to the page describing e-mail delivery of reports. Finally, click on **Go to the Subscription Page** and follow the instructions. 2) If you do NOT have Internet access, send an e-mail message to: usda-reports@usda.mannlib.cornell.edu. In the body of the message type the word: **list**.

AUTOFAX ACCESS

NASSFax service is available for some reports from your fax machine. Please call 202-720-2000, using the handset attached to your fax. Respond to the voice prompts. Document 0411 is a list of available reports.

PRINTED REPORTS OR DATA PRODUCTS

CALL OUR TOLL-FREE ORDER DESK: 800-999-6779 (U.S. and Canada)
Other areas, please call 703-834-0125 FAX: 703-834-0110
(Visa, MasterCard, check, or money order acceptable for payment.)

ASSISTANCE

For **assistance** with general agricultural statistics or further information about NASS or its products or services, contact the **Agricultural Statistics Hotline** at 800-727-9540, 7:30 a.m. to 4:00 p.m. ET, or e-mail: nass@nass.usda.gov.