

Milk Production

Released September 15, 2000, by the National Agricultural Statistics Service (NASS), Agricultural Statistics Board, U.S. Department of Agriculture. For information on "Milk Production" call Steve Anderson at 202-690-3236, office hours 7:00 a.m. to 4:30 p.m. ET.

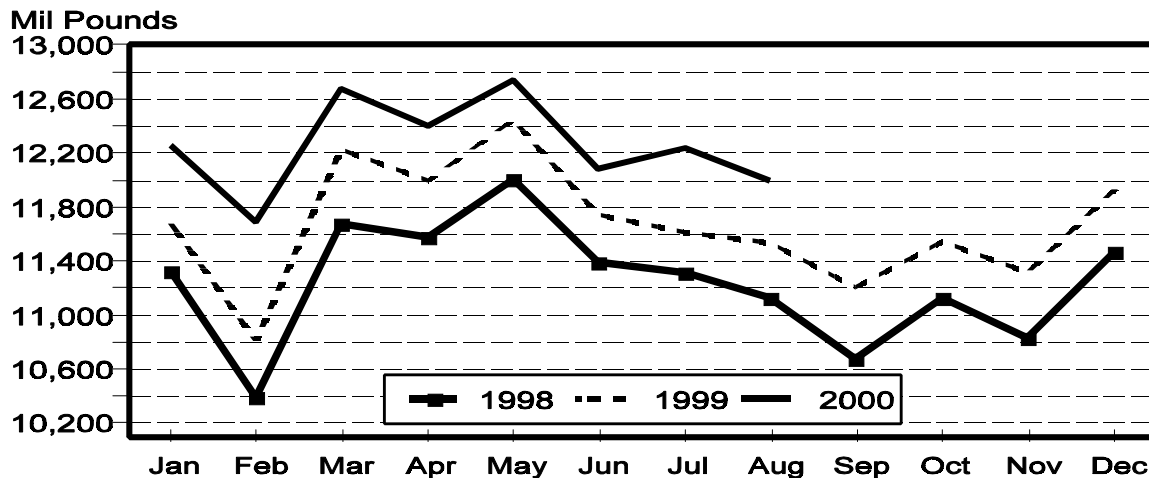
August Milk Production Up 4.0 Percent

Milk production in the 20 major States during August totaled 12.0 billion pounds, up 4.0 percent from production in these same States in August 1999. July revised production, at 12.2 billion pounds was up 5.4 percent from July 1999. The July revision represented an increase of 0.3 percent or 37 million pounds from last months preliminary production estimate.

Production per cow in the 20 major States averaged 1,530 pounds for August, 43 pounds above August 1999.

The number of cows on farms in the 20 major States was 7.84 million head, 89,000 head more than August 1999 and 10,000 head more than July 2000.

Monthly Milk Production 20 States



Milk Cows and Production: By Quarter, United States, 1999-2000¹

Quarter	Milk Cows ²		Milk Per Cow ³		Milk Production ³		
	1999	2000	1999	2000	1999	2000	Change From 1999
	<i>1,000 Head</i>	<i>1,000 Head</i>	<i>Pounds</i>	<i>Pounds</i>	<i>Million Pounds</i>	<i>Million Pounds</i>	<i>Percent</i>
Jan-Mar	9,128	9,187	4,437	4,636	40,505	42,593	5.2
Apr-Jun	9,155	9,215	4,591	4,683	42,029	43,150	2.7
Jul-Sep	9,171		4,337		39,771		
Oct-Dec	9,170		4,406		40,406		
Annual	9,156		17,771		162,711		

¹ May not add due to rounding.

² Includes dry cows, excludes heifers not yet fresh.

³ Excludes milk sucked by calves.

Milk Cows and Production: By Month, 20 Selected States, 1999-2000

Month	Milk Cows ¹		Milk Per Cow ²		Milk Production ²		
	1999	2000	1999	2000	1999	2000	Change From 1999
	<i>1,000 Head</i>	<i>1,000 Head</i>	<i>Pounds</i>	<i>Pounds</i>	<i>Million Pounds</i>	<i>Million Pounds</i>	<i>Percent</i>
Jan	7,694	7,765	1,518	1,578	11,679	12,256	4.9
Feb	7,696	7,766	1,404	1,505	10,804	11,691	8.2
Mar	7,713	7,774	1,585	1,631	12,228	12,679	3.7
Apr	7,720	7,787	1,554	1,592	11,998	12,399	3.3
May	7,733	7,795	1,610	1,635	12,447	12,743	2.4
Jun	7,740	7,810	1,516	1,547	11,737	12,083	2.9
Jul	7,751	7,834	1,498	1,561	11,610	12,232	5.4
Aug	7,755	7,844	1,487	1,530	11,534	11,998	4.0
Sep	7,753		1,445		11,200		
Oct	7,746		1,491		11,549		
Nov	7,756		1,459		11,315		
Dec	7,757		1,538		11,928		
Annual	7,735		18,103		140,029		

¹ Includes dry cows, excludes heifers not yet fresh.

² Excludes milk sucked by calves.

Estimated Milk Cows and Production: By Month, United States, 1999-2000

Month	Milk Cows ¹		Milk Per Cow ²		Milk Production ²		
	1999	2000	1999	2000	1999	2000	Change From 1999
	<i>1,000 Head</i>	<i>1,000 Head</i>	<i>Pounds</i>	<i>Pounds</i>	<i>Million Pounds</i>	<i>Million Pounds</i>	<i>Percent</i>
Jan	9,121	9,183	1,494	1,552	13,628	14,252	4.6
Feb	9,123	9,185	1,382	1,480	12,607	13,596	7.8
Mar	9,141	9,194	1,561	1,604	14,270	14,745	3.3
Apr	9,143	9,202	1,524	1,562	13,938	14,373	3.1
May	9,157	9,213	1,579	1,603	14,458	14,771	2.2
Jun	9,166	9,229	1,487	1,518	13,633	14,006	2.7
Jul	9,167	9,254	1,467	1,528	13,444	14,143	5.2
Aug	9,174	9,265	1,456	1,496	13,357	13,865	3.8
Sep	9,171		1,414		12,970		
Oct	9,162		1,464		13,412		
Nov	9,174		1,432		13,140		
Dec	9,175		1,510		13,854		
Annual	9,156		17,771		162,711		

¹ Includes dry cows, excludes heifers not yet fresh.

² Excludes milk sucked by calves.

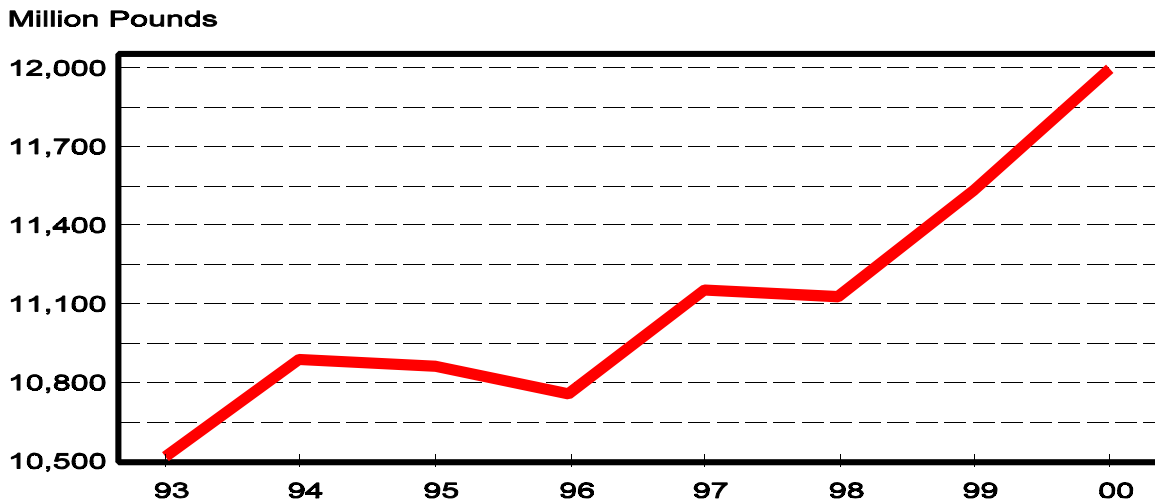
Milk Cows and Production: By State, August 1999-2000

State	Milk Cows ¹		Milk Per Cow ²		Milk Production ²		Change From 1999
	1999	2000	1999	2000	1999	2000	
	<i>1,000 Head</i>	<i>1,000 Head</i>	<i>Pounds</i>	<i>Pounds</i>	<i>Million Pounds</i>	<i>Million Pounds</i>	<i>Percent</i>
AZ	135	140	1,580	1,555	213	218	2.3
CA	1,472	1,533	1,770	1,760	2,605	2,698	3.6
FL	158	156	1,045	1,080	165	168	1.8
ID	324	357	1,770	1,810	573	646	12.7
IL	121	120	1,280	1,400	155	168	8.4
IN	136	151	1,300	1,420	177	214	20.9
IA	216	215	1,400	1,510	302	325	7.6
KY	132	133	975	1,030	129	137	6.2
MI	303	301	1,530	1,600	464	482	3.9
MN	550	530	1,385	1,425	762	755	-0.9
MO	157	153	1,000	1,130	157	173	10.2
NM	235	255	1,635	1,730	384	441	14.8
NY	702	690	1,450	1,470	1,018	1,014	-0.4
OH	259	263	1,440	1,455	373	383	2.7
PA	615	619	1,455	1,485	895	919	2.7
TX	346	348	1,095	1,185	379	412	8.7
VT	160	161	1,430	1,470	229	237	3.5
VA	121	120	1,280	1,300	155	156	0.6
WA	247	247	1,915	1,935	473	478	1.1
WI	1,366	1,352	1,410	1,460	1,926	1,974	2.5
20-State Total	7,755	7,844	1,487	1,530	11,534	11,998	4.0

¹ Includes dry cows, excludes heifers not yet fresh.

² Excludes milk sucked by calves.

August Milk Production, 1993-2000
20 States



Milk Cows and Production: By State, July 1999-2000 ¹

State	Milk Cows ²		Milk per Cow ³		Milk Production ³		Change From 1999
	1999	2000	1999	2000	1999	2000	
	<i>1,000 Head</i>	<i>1,000 Head</i>	<i>Pounds</i>	<i>Pounds</i>	<i>Million Pounds</i>	<i>Million Pounds</i>	<i>Percent</i>
AZ	135	140	1,620	1,735	219	243	11.0
CA	1,467	1,527	1,715	1,825	2,516	2,787	10.8
FL	159	157	1,190	1,210	189	190	0.5
ID	322	355	1,770	1,820	570	646	13.3
IL	122	120	1,310	1,430	160	172	7.5
IN	136	151	1,325	1,450	180	219	21.7
IA	216	215	1,430	1,540	309	331	7.1
KY	132	133	985	1,025	130	136	4.6
MI	307	298	1,555	1,630	477	486	1.9
MN	545	535	1,420	1,455	774	778	0.5
MO	157	154	1,020	1,210	160	186	16.3
NM	235	252	1,690	1,730	397	436	9.8
NY	702	690	1,460	1,480	1,025	1,021	-0.4
OH	260	263	1,460	1,475	380	388	2.1
PA	614	619	1,470	1,500	903	929	2.9
TX	346	348	1,225	1,225	424	426	0.5
VT	159	160	1,440	1,475	229	236	3.1
VA	120	120	1,185	1,265	142	152	7.0
WA	249	247	1,940	1,965	483	485	0.4
WI	1,368	1,350	1,420	1,470	1,943	1,985	2.2
20-State Total	7,751	7,834	1,498	1,561	11,610	12,232	5.4

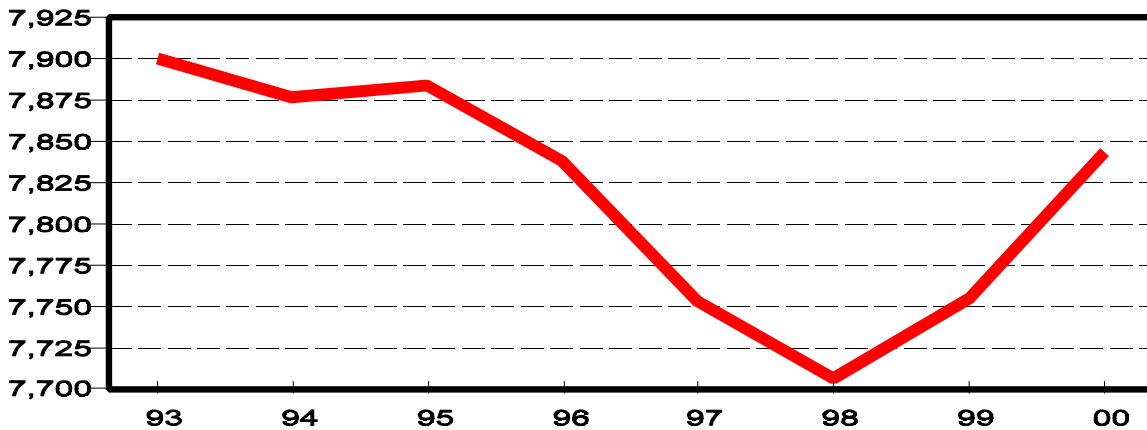
¹ 2000 revised.

² Includes dry cows, excludes heifers not yet fresh.

³ Excludes milk sucked by calves.

**August Milk Cows, 1993-2000
20 States**

Thousand Head



Reliability Statement

Survey Procedures: Primary data used to determine these estimates were obtained from a sample of producers. Individual States maintain a list of all known milk producers and information on the size of their herd. States use all known sources of producers to ensure that their lists are as complete as possible. Generally, all large producers and a sample of small producers are included in the survey. Questionnaires are mailed to producers near the end of the month to obtain data for the first day of the month. Additional reports are obtained by telephone, as needed, to supplement the mail response.

Estimation Procedures: State offices prepare these estimates using survey indications, historic trends, and any available administrative data. Individual State estimates are reviewed by the Agricultural Statistics Board for reasonableness.

Revision Policy: Milk production, rate per cow, and number of cows are subject to revision the following month for monthly States or the following quarter for the quarterly States. Normally, Federal Market Order sales are the main basis for revisions. However, data for all orders are not available in time for this revision. Estimates are again subject to revisions in February each year based on additional administrative data. In the event that additional changes are necessary, a third revision is possible in February the following year. Estimates are again reviewed after data from the five-year Census of Agriculture are available. No revisions are made after that date.

Reliability: Since all operations with dairy animals are not included in the sample, survey estimates are subject to sampling variability. Survey results are also subject to non-sampling errors such as omissions, duplications, and mistakes in reporting, recording, and processing the data. The effects of these errors cannot be measured directly. They are minimized through rigid quality controls in the data collection process and through a careful review of all reported data for consistency and reasonableness.

To assist users in evaluating the reliability of the estimates in this report, the "Root Mean Square Error" is shown for selected items on the next page. The "Root Mean Square Error" is a statistical measure based on past performance and is computed using the differences between first and final estimates. The "Root Mean Square Error" for milk cow inventory estimates over the past 10 April-June quarters is 1.1 percent. This means that chances are 2 out of 3 that the final April-June estimate will not be above or below the current estimate of 9.22 million head by more than 1.1 percent. Chances are 9 out of 10 that the difference will not exceed 2.1 percent.

Reliability of April-June Milk Estimates ¹

Item	Root Mean Square Error	90% Confidence Level		Difference Between First and Latest Estimates			Quarters	
				Average	Smallest	Largest	First Above Latest	First Below Latest
Milk Production	<i>Percent</i> 0.4 <i>Percent</i>	<i>Percent</i> 0.8 <i>Percent</i>	<i>Million Pounds</i> 345 <i>1,000 Head</i>	<i>Million Pounds</i> 142 <i>1,000 Head</i>	<i>Million Pounds</i> 3 <i>1,000 Head</i>	<i>Million Pounds</i> 264 <i>1,000 Head</i>	<i>Number</i> 10 <i>Number</i>	<i>Number</i> 0 <i>Number</i>
All Milk Cows	1.1	2.1	194	86	4	188	7	3

¹ Based on records for the past 10 April-June quarters.

The next "Milk Production" report will be released at 3 p.m. on October 16, 2000.

The United States Department of Agriculture (USDA) prohibits discrimination in all its programs on the basis of race, color, national origin, gender, religion, age, disability, political beliefs, sexual orientation, and marital or family status. (Not all prohibited bases apply to all programs.) Persons with disabilities who require alternative means for communication of program information (braille, large print, audiotape, etc.) should contact the USDA's TARGET Center at 202-720-2600 (voice and TDD).

To file a complaint of discrimination, write USDA, Director, Office of Civil Rights, Room 326-W, Whitten Building, 14th and Independence Avenue, SW, Washington, D.C., 20250-9410, or call 202-720-5964 (voice or TDD). USDA is an equal opportunity provider and employer.

ACCESS TO REPORTS!!

For your convenience, there are several ways to obtain NASS reports, data products, and services:

INTERNET ACCESS

All NASS reports are available free of charge on the worldwide Internet. For access, connect to the Internet and go to the NASS Home Page at: <http://www.usda.gov/nass/>. Select "Today's Reports" or Publications and then Reports by Calendar or Publications and then Search, by Title or Subject.

E-MAIL SUBSCRIPTION

There are two options for subscribing via e-mail. All NASS reports are available by subscription free of charge direct to your e-mail address. 1) Starting with the NASS Home Page at <http://www.usda.gov/nass/>, click on **Publications**, then click on the **Subscribe by E-mail** button which takes you to the page describing e-mail delivery of reports. Finally, click on **Go to the Subscription Page** and follow the instructions. 2) If you do NOT have Internet access, send an e-mail message to: usda-reports@usda.mannlib.cornell.edu. In the body of the message type the word: **list**.

AUTOFAX ACCESS

NASSFax service is available for some reports from your fax machine. Please call 202-720-2000, using the handset attached to your fax. Respond to the voice prompts. Document 0411 is a list of available reports.

PRINTED REPORTS OR DATA PRODUCTS

CALL OUR TOLL-FREE ORDER DESK: 800-999-6779 (U.S. and Canada)
Other areas, please call 703-834-0125 FAX: 703-834-0110
(Visa, MasterCard, check, or money order acceptable for payment.)

ASSISTANCE

For **assistance** with general agricultural statistics or further information about NASS or its products or services, contact the **Agricultural Statistics Hotline** at 800-727-9540, 7:30 a.m. to 4:00 p.m. ET, or e-mail: nass@nass.usda.gov.

USDA to Hold Public Forum
October 16, 2000

Holiday Inn Mart Plaza
Chicago, Illinois

The National Agricultural Statistics Service will be organizing an open forum for Data Users. The purpose will be to provide updates on pending changes in the various statistical and information programs, and to seek comments and input from data users. The other USDA agencies to be represented will include the Agricultural Marketing Service, the Economic Research Service, the Foreign Agricultural Service, and the World Agricultural Outlook Board. The Foreign Trade Division from the Census Bureau and The National Weather Service will also be included in the meeting.

For registration details, see the NASS home page at <http://www.usda.gov/nass/> or contact Karlyn McCutcheon (NASS) at (202) 690-8141 or at hq_dapp@nass.usda.gov