

Milk Production

Released October 16, 2000, by the National Agricultural Statistics Service (NASS), Agricultural Statistics Board, U.S. Department of Agriculture. For information on "Milk Production" call Steve Anderson at 202-690-3236, office hours 7:00 a.m. to 4:30 p.m. ET.

September Milk Production Up 2.8 Percent

Milk production in the 20 major States during September totaled 11.5 billion pounds, up 2.8 percent from production in these same States in September 1999. The August revision represented a decrease of 0.3 percent or 32 million pounds from last months preliminary production estimate.

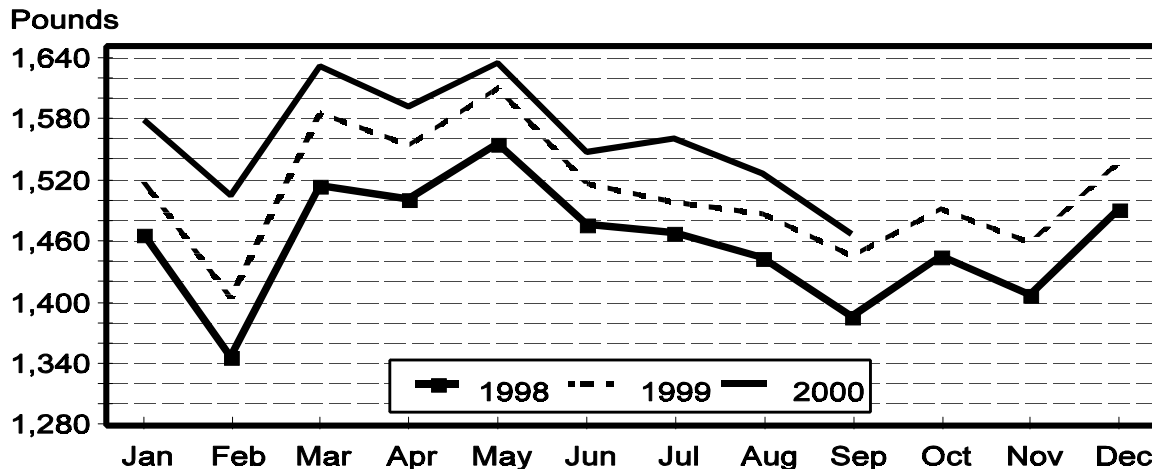
Production per cow in the 20 major States averaged 1,467 pounds for September, 22 pounds above September 1999.

The number of cows on farms in the 20 major States was 7.85 million head, 98,000 head more than September 1999 and 11,000 head more than August 2000.

July-September Milk Production Up 4.0 Percent

The quarterly production of milk for the U.S. was 41.3 billion pounds, 4.0 percent above the July-September period last year. The average number of milk cows in the U.S. during the July-September quarter was 9.25 million head, 81,000 head more than the same period last year.

Monthly Milk per Cow 20 States



Milk Cows and Production: By Quarter, United States, 1999-2000¹

Quarter	Milk Cows ²		Milk Per Cow ³		Milk Production ³		
	1999	2000	1999	2000	1999	2000	Change From 1999
	<i>1,000 Head</i>	<i>1,000 Head</i>	<i>Pounds</i>	<i>Pounds</i>	<i>Million Pounds</i>	<i>Million Pounds</i>	<i>Percent</i>
Jan-Mar	9,128	9,187	4,437	4,636	40,505	42,593	5.2
Apr-Jun	9,155	9,217	4,591	4,684	42,029	43,171	2.7
Jul-Sep	9,171	9,252	4,337	4,469	39,771	41,348	4.0
Oct-Dec	9,170		4,406		40,406		
Annual	9,156		17,771		162,711		

¹ May not add due to rounding.

² Includes dry cows, excludes heifers not yet fresh.

³ Excludes milk sucked by calves.

Milk Cows and Production: By Month, 20 Selected States, 1999-2000

Month	Milk Cows ¹		Milk Per Cow ²		Milk Production ²		
	1999	2000	1999	2000	1999	2000	Change From 1999
	<i>1,000 Head</i>	<i>1,000 Head</i>	<i>Pounds</i>	<i>Pounds</i>	<i>Million Pounds</i>	<i>Million Pounds</i>	<i>Percent</i>
Jan	7,694	7,765	1,518	1,578	11,679	12,256	4.9
Feb	7,696	7,766	1,404	1,505	10,804	11,691	8.2
Mar	7,713	7,774	1,585	1,631	12,228	12,679	3.7
Apr	7,720	7,787	1,554	1,592	11,998	12,399	3.3
May	7,733	7,795	1,610	1,635	12,447	12,743	2.4
Jun	7,740	7,810	1,516	1,547	11,737	12,083	2.9
Jul	7,751	7,834	1,498	1,561	11,610	12,232	5.4
Aug	7,755	7,840	1,487	1,526	11,534	11,966	3.7
Sep	7,753	7,851	1,445	1,467	11,200	11,515	2.8
Oct	7,746		1,491		11,549		
Nov	7,756		1,459		11,315		
Dec	7,757		1,538		11,928		
Annual	7,735		18,103		140,029		

¹ Includes dry cows, excludes heifers not yet fresh.

² Excludes milk sucked by calves.

Estimated Milk Cows and Production: By Month, United States, 1999-2000

Month	Milk Cows ¹		Milk Per Cow ²		Milk Production ²		
	1999	2000	1999	2000	1999	2000	Change From 1999
	<i>1,000 Head</i>	<i>1,000 Head</i>	<i>Pounds</i>	<i>Pounds</i>	<i>Million Pounds</i>	<i>Million Pounds</i>	<i>Percent</i>
Jan	9,121	9,183	1,494	1,552	13,628	14,252	4.6
Feb	9,123	9,185	1,382	1,480	12,607	13,596	7.8
Mar	9,141	9,194	1,561	1,604	14,270	14,745	3.3
Apr	9,143	9,204	1,524	1,562	13,938	14,380	3.2
May	9,157	9,215	1,579	1,604	14,458	14,778	2.2
Jun	9,166	9,231	1,487	1,518	13,633	14,013	2.8
Jul	9,167	9,244	1,467	1,532	13,444	14,162	5.3
Aug	9,174	9,250	1,456	1,498	13,357	13,854	3.7
Sep	9,171	9,263	1,414	1,439	12,970	13,332	2.8
Oct	9,162		1,464		13,412		
Nov	9,174		1,432		13,140		
Dec	9,175		1,510		13,854		
Annual	9,156		17,771		162,711		

¹ Includes dry cows, excludes heifers not yet fresh.

² Excludes milk sucked by calves.

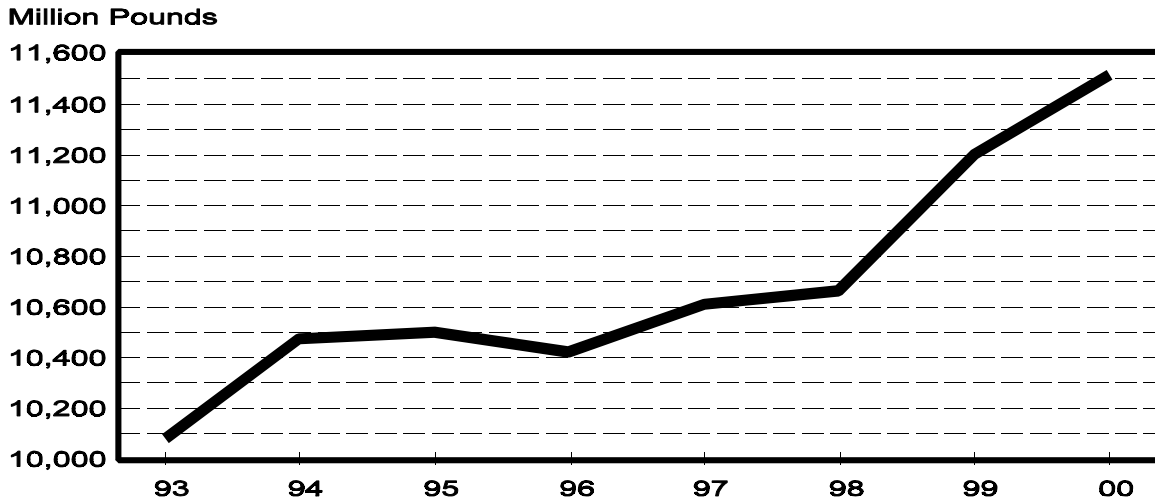
Milk Cows and Production: By State, September 1999-2000

State	Milk Cows ¹		Milk Per Cow ²		Milk Production ²		
	1999	2000	1999	2000	1999	2000	Change From 1999
	<i>1,000 Head</i>	<i>1,000 Head</i>	<i>Pounds</i>	<i>Pounds</i>	<i>Million Pounds</i>	<i>Million Pounds</i>	<i>Percent</i>
AZ	135	140	1,550	1,520	209	213	1.9
CA	1,476	1,539	1,710	1,685	2,524	2,593	2.7
FL	157	157	1,020	1,070	160	168	5.0
ID	325	356	1,700	1,720	553	612	10.7
IL	121	120	1,300	1,350	157	162	3.2
IN	135	150	1,275	1,350	172	203	18.0
IA	216	215	1,395	1,450	301	312	3.7
KY	132	132	960	985	127	130	2.4
MI	299	303	1,485	1,525	444	462	4.1
MN	550	530	1,335	1,380	734	731	-0.4
MO	157	153	1,030	1,080	162	165	1.9
NM	235	258	1,605	1,660	377	428	13.5
NY	702	690	1,380	1,400	969	966	-0.3
OH	259	264	1,400	1,420	363	375	3.3
PA	616	619	1,415	1,420	872	879	0.8
TX	346	346	1,125	1,130	389	391	0.5
VT	160	160	1,380	1,410	221	226	2.3
VA	121	120	1,265	1,240	153	149	-2.6
WA	247	247	1,855	1,850	458	457	-0.2
WI	1,364	1,352	1,360	1,400	1,855	1,893	2.0
20-State Total	7,753	7,851	1,445	1,467	11,200	11,515	2.8

¹ Includes dry cows, excludes heifers not yet fresh.

² Excludes milk sucked by calves.

**September Milk Production, 1993-2000
20 States**



Milk Cows and Production: By State, August 1999-2000 ¹

State	Milk Cows ²		Milk per Cow ³		Milk Production ³		
	1999	2000	1999	2000	1999	2000	Change From 1999
	<i>1,000 Head</i>	<i>1,000 Head</i>	<i>Pounds</i>	<i>Pounds</i>	<i>Million Pounds</i>	<i>Million Pounds</i>	<i>Percent</i>
AZ	135	140	1,580	1,555	213	218	2.3
CA	1,472	1,533	1,770	1,750	2,605	2,683	3.0
FL	158	156	1,045	1,120	165	175	6.1
ID	324	355	1,770	1,790	573	635	10.8
IL	121	120	1,280	1,400	155	168	8.4
IN	136	151	1,300	1,420	177	214	20.9
IA	216	215	1,400	1,510	302	325	7.6
KY	132	132	975	1,015	129	134	3.9
MI	303	301	1,530	1,600	464	482	3.9
MN	550	530	1,385	1,435	762	761	-0.1
MO	157	153	1,000	1,130	157	173	10.2
NM	235	255	1,635	1,730	384	441	14.8
NY	702	690	1,450	1,470	1,018	1,014	-0.4
OH	259	263	1,440	1,455	373	383	2.7
PA	615	619	1,455	1,485	895	919	2.7
TX	346	348	1,095	1,185	379	412	8.7
VT	160	160	1,430	1,455	229	233	1.7
VA	121	120	1,280	1,250	155	150	-3.2
WA	247	247	1,915	1,940	473	479	1.3
WI	1,366	1,352	1,410	1,455	1,926	1,967	2.1
20-State Total	7,755	7,840	1,487	1,526	11,534	11,966	3.7

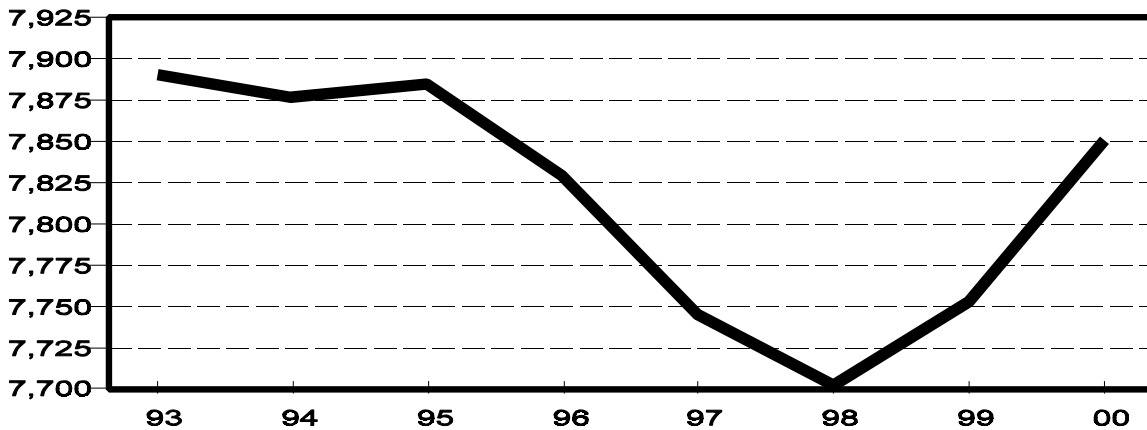
¹ 2000 revised.

² Includes dry cows, excludes heifers not yet fresh.

³ Excludes milk sucked by calves.

**September Milk Cows, 1993-2000
20 States**

Thousand Head



**Milk Cows and Production: By State and United States,
Revised April-June, 1999-2000**

State	Apr-Jun Milk Cows ¹		Apr-Jun Milk Production ²		Change From 1999 Percent
	1999 <i>1,000 Head</i>	2000 <i>1,000 Head</i>	1999 <i>Million Pounds</i>	2000 <i>Million Pounds</i>	
AL	27	25	100	92	-8.0
AK	1.0	0.9	3.60	3.41	-5.3
AZ	133	138	795	837	5.3
AR	42	42	138	142	2.9
CA	1,460	1,514	7,743	8,196	5.9
CO	82	88	420	488	16.2
CT	29	26	136	122	-10.3
DE	11.0	11.0	43.6	43.8	0.5
FL	160	158	659	673	2.1
GA	90	88	392	384	-2.0
HI	8.5	8.3	32.5	32.0	-1.5
ID	314	345	1,585	1,817	14.6
IL	123	120	533	541	1.5
IN	136	147	564	638	13.1
IA	217	215	980	1,010	3.1
KS	86	89	360	380	5.6
KY	133	133	431	441	2.3
LA	61	59	192	189	-1.6
ME	42	40	180	172	-4.4
MD	85	84	353	332	-5.9
MA	25	23	109	102	-6.4
MI	302	292	1,406	1,392	-1.0
MN	545	538	2,466	2,466	
MS	38	36	149	144	-3.4
MO	160	156	595	601	1.0
MT	18	18	77	79	2.6
NE	73	75	285	315	10.5
NV	25	25	128	123	-3.9
NH	19	19	83	81	-2.4
NJ	18	16	74	69	-6.8
NM	232	245	1,221	1,358	11.2
NY	701	692	3,121	3,078	-1.4
NC	73	72	311	303	-2.6
ND	49	51	178	190	6.7
OH	260	262	1,144	1,181	3.2
OK	92	91	317	331	4.4
OR	89	90	425	430	1.2
PA	615	616	2,855	2,893	1.3
RI	2.0	1.8	8.2	7.5	-8.5
SC	24	23	98	98	
SD	102	103	380	413	8.7
TN	98	95	373	365	-2.1
TX	344	350	1,511	1,538	1.8
UT	92	96	412	428	3.9
VT	160	160	700	716	2.3
VA	122	120	475	488	2.7
WA	247	247	1,406	1,432	1.8
WV	18	17	69	67	-2.9
WI	1,366	1,350	5,992	5,929	-1.1
WY	5.9	5.8	20.1	20.3	1.0
US ³	9,155	9,217	42,029	43,171	2.7

¹ Includes dry cows, excludes heifers not yet fresh.

² Excludes milk sucked by calves.

³ May not add due to rounding.

**Milk Cows and Production: By State and United States,
Preliminary July-September, 1999-2000**

State	Jul-Sep Milk Cows ¹		Jul-Sep Milk Production ²		Change From 1999 Percent
	1999 <i>1,000 Head</i>	2000 <i>1,000 Head</i>	1999 <i>Million Pounds</i>	2000 <i>Million Pounds</i>	
AL	27	25	78	72	-7.7
AK	1.0	0.9	3.48	3.28	-5.7
AZ	135	140	641	674	5.1
AR	42	42	122	120	-1.6
CA	1,472	1,533	7,645	8,063	5.5
CO	83	89	434	495	14.1
CT	28	26	126	117	-7.1
DE	11.0	11.0	41.0	42.7	4.1
FL	158	157	514	533	3.7
GA	88	87	313	320	2.2
HI	8.6	8.0	30.3	30.4	0.3
ID	324	355	1,696	1,893	11.6
IL	121	120	472	502	6.4
IN	136	151	529	636	20.2
IA	216	215	912	968	6.1
KS	86	89	325	350	7.7
KY	132	132	386	400	3.6
LA	61	57	145	143	-1.4
ME	41	40	173	169	-2.3
MD	85	83	332	325	-2.1
MA	24	22	104	97	-6.7
MI	303	301	1,385	1,430	3.2
MN	548	532	2,270	2,270	
MS	37	35	114	112	-1.8
MO	157	153	479	524	9.4
MT	18	18	76	78	2.6
NE	74	76	281	318	13.2
NV	25	25	128	128	
NH	19	18	79	76	-3.8
NJ	17	16	68	65	-4.4
NM	235	255	1,158	1,305	12.7
NY	702	690	3,012	3,001	-0.4
NC	73	71	289	282	-2.4
ND	48	51	168	188	11.9
OH	259	263	1,116	1,146	2.7
OK	92	91	294	319	8.5
OR	89	90	423	428	1.2
PA	615	619	2,670	2,727	2.1
RI	2.0	1.8	7.7	7.1	-7.8
SC	23	22	79	85	7.6
SD	102	102	375	413	10.1
TN	95	94	320	320	
TX	346	347	1,192	1,229	3.1
UT	93	98	412	448	8.7
VT	160	160	679	695	2.4
VA	121	120	450	451	0.2
WA	248	247	1,414	1,421	0.5
WV	18	17	66	64	-3.0
WI	1,366	1,351	5,724	5,845	2.1
WY	6.0	5.5	21.0	19.3	-8.1
US ³	9,171	9,252	39,771	41,348	4.0

¹ Includes dry cows, excludes heifers not yet fresh.

² Excludes milk sucked by calves.

³ May not add due to rounding.

Reliability Statement

Survey Procedures: Primary data used to determine these estimates were obtained from a sample of producers. Individual States maintain a list of all known milk producers and information on the size of their herd. States use all known sources of producers to ensure that their lists are as complete as possible. Generally, all large producers and a sample of small producers are included in the survey. Questionnaires are mailed to producers near the end of the month to obtain data for the first day of the month. Additional reports are obtained by telephone, as needed, to supplement the mail response.

Estimation Procedures: State offices prepare these estimates using survey indications, historic trends, and any available administrative data. Individual State estimates are reviewed by the Agricultural Statistics Board for reasonableness.

Revision Policy: Milk production, rate per cow, and number of cows are subject to revision the following month for monthly States or the following quarter for the quarterly States. Normally, Federal Market Order sales are the main basis for revisions. However, data for all orders are not available in time for this revision. Estimates are again subject to revisions in February each year based on additional administrative data. In the event that additional changes are necessary, a third revision is possible in February the following year. Estimates are again reviewed after data from the five-year Census of Agriculture are available. No revisions are made after that date.

Reliability: Since all operations with dairy animals are not included in the sample, survey estimates are subject to sampling variability. Survey results are also subject to non-sampling errors such as omissions, duplications, and mistakes in reporting, recording, and processing the data. The effects of these errors cannot be measured directly. They are minimized through rigid quality controls in the data collection process and through a careful review of all reported data for consistency and reasonableness.

To assist users in evaluating the reliability of the estimates in this report, the "Root Mean Square Error" is shown for selected items on the next page. The "Root Mean Square Error" is a statistical measure based on past performance and is computed using the differences between first and final estimates. The "Root Mean Square Error" for milk cow inventory estimates over the past 10 July-September quarters is 1.2 percent. This means that chances are 2 out of 3 that the final July-September estimate will not be above or below the current estimate of 9.25 million head by more than 1.2 percent. Chances are 9 out of 10 that the difference will not exceed 2.2 percent.

Reliability of July-September Milk Estimates ¹

Item	Root Mean Square Error	90% Confidence Level		Difference Between First and Latest Estimates			Quarters	
				Average	Smallest	Largest	First Above Latest	First Below Latest
				<i>Million Pounds</i>	<i>Million Pounds</i>	<i>Million Pounds</i>	<i>Number</i>	<i>Number</i>
Milk Production	<i>Percent</i> 0.7 <i>Percent</i>	<i>Percent</i> 1.3 <i>Percent</i>	<i>Million Pounds</i> 538 <i>1,000 Head</i>	<i>Million Pounds</i> 245 <i>1,000 Head</i>	<i>Million Pounds</i> 29 <i>1,000 Head</i>	<i>Million Pounds</i> 380 <i>1,000 Head</i>	<i>Number</i> 10 <i>Number</i>	<i>Number</i> 0 <i>Number</i>
All Milk Cows	1.2	2.2	204	94	5	179	8	2

¹ Based on records for the past 10 July-September quarters.

The next "Milk Production" report will be released at 3 p.m. on November 15, 2000.

The United States Department of Agriculture (USDA) prohibits discrimination in all its programs on the basis of race, color, national origin, gender, religion, age, disability, political beliefs, sexual orientation, and marital or family status. (Not all prohibited bases apply to all programs.) Persons with disabilities who require alternative means for communication of program information (braille, large print, audiotape, etc.) should contact the USDA's TARGET Center at 202-720-2600 (voice and TDD).

To file a complaint of discrimination, write USDA, Director, Office of Civil Rights, Room 326-W, Whitten Building, 14th and Independence Avenue, SW, Washington, D.C., 20250-9410, or call 202-720-5964 (voice or TDD). USDA is an equal opportunity provider and employer.

ACCESS TO REPORTS!!

For your convenience, there are several ways to obtain NASS reports, data products, and services:

INTERNET ACCESS

All NASS reports are available free of charge on the worldwide Internet. For access, connect to the Internet and go to the NASS Home Page at: <http://www.usda.gov/nass/>. Select "Today's Reports" or Publications and then Reports by Calendar or Publications and then Search, by Title or Subject.

E-MAIL SUBSCRIPTION

There are two options for subscribing via e-mail. All NASS reports are available by subscription free of charge direct to your e-mail address. 1) Starting with the NASS Home Page at <http://www.usda.gov/nass/>, click on **Publications**, then click on the **Subscribe by E-mail** button which takes you to the page describing e-mail delivery of reports. Finally, click on **Go to the Subscription Page** and follow the instructions. 2) If you do NOT have Internet access, send an e-mail message to: usda-reports@usda.mannlib.cornell.edu. In the body of the message type the word: **list**.

AUTOFAX ACCESS

NASSFax service is available for some reports from your fax machine. Please call 202-720-2000, using the handset attached to your fax. Respond to the voice prompts. Document 0411 is a list of available reports.

PRINTED REPORTS OR DATA PRODUCTS

CALL OUR TOLL-FREE ORDER DESK: 800-999-6779 (U.S. and Canada)
Other areas, please call 703-834-0125 FAX: 703-834-0110
(Visa, MasterCard, check, or money order acceptable for payment.)

ASSISTANCE

For **assistance** with general agricultural statistics or further information about NASS or its products or services, contact the **Agricultural Statistics Hotline** at 800-727-9540, 7:30 a.m. to 4:00 p.m. ET, or e-mail: nass@nass.usda.gov.