

Milk Production

Released December 15, 2000, by the National Agricultural Statistics Service (NASS), Agricultural Statistics Board, U.S. Department of Agriculture. For information on "Milk Production" call Steve Anderson at 202-690-3236, office hours 7:00 a.m. to 4:30 p.m. ET.

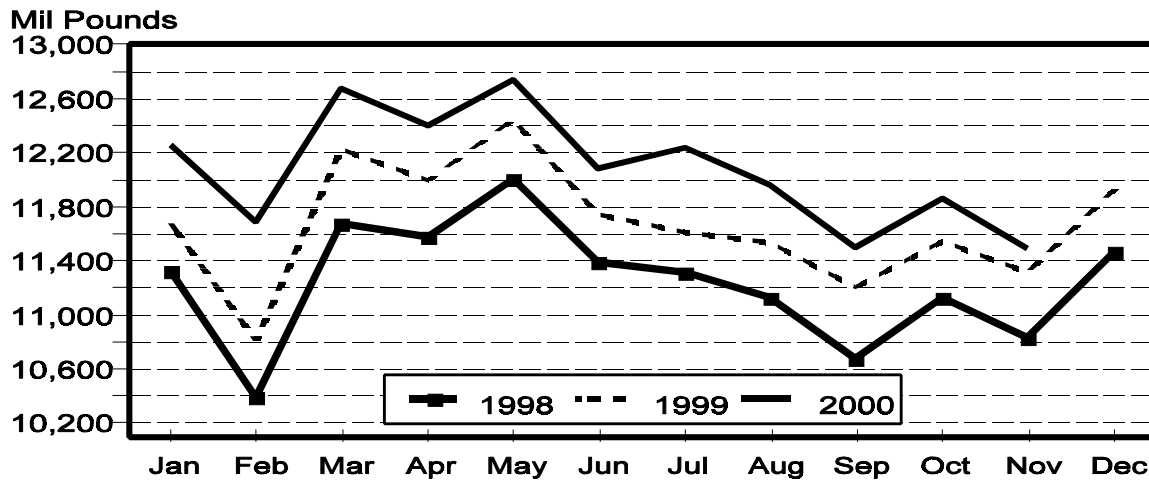
November Production Up 1.5 Percent

Milk production in the 20 major States during November totaled 11.5 billion pounds, up 1.5 percent from production in these same States in November 1999. October revised production, at 11.9 billion pounds was up 2.7 percent from October 1999. The October revision represented a decrease of 0.2 percent or 29 million pounds from last month's preliminary production estimate.

Production per cow in the 20 major States averaged 1,463 pounds for November, 4 pounds above November 1999.

The number of cows on farms in the 20 major States was 7.85 million head, 95,000 head more than November 1999 and 1,000 head more than October 2000.

Monthly Milk Production 20 States



Milk Cows and Production: By Quarter, United States, 1999-2000¹

Quarter	Milk Cows ²		Milk Per Cow ³		Milk Production ³		
	1999	2000	1999	2000	1999	2000	Change From 1999
	<i>1,000 Head</i>	<i>1,000 Head</i>	<i>Pounds</i>	<i>Pounds</i>	<i>Million Pounds</i>	<i>Million Pounds</i>	<i>Percent</i>
Jan-Mar	9,128	9,187	4,437	4,636	40,505	42,593	5.2
Apr-Jun	9,155	9,217	4,591	4,684	42,029	43,171	2.7
Jul-Sep	9,171	9,252	4,337	4,467	39,771	41,333	3.9
Oct-Dec	9,170		4,406		40,406		
Annual	9,156		17,771		162,711		

¹ May not add due to rounding.

² Includes dry cows, excludes heifers not yet fresh.

³ Excludes milk sucked by calves.

Milk Cows and Production: By Month, 20 Selected States, 1999-2000

Month	Milk Cows ¹		Milk Per Cow ²		Milk Production ²		
	1999	2000	1999	2000	1999	2000	Change From 1999
	<i>1,000 Head</i>	<i>1,000 Head</i>	<i>Pounds</i>	<i>Pounds</i>	<i>Million Pounds</i>	<i>Million Pounds</i>	<i>Percent</i>
Jan	7,694	7,765	1,518	1,578	11,679	12,256	4.9
Feb	7,696	7,766	1,404	1,505	10,804	11,691	8.2
Mar	7,713	7,774	1,585	1,631	12,228	12,679	3.7
Apr	7,720	7,787	1,554	1,592	11,998	12,399	3.3
May	7,733	7,795	1,610	1,635	12,447	12,743	2.4
Jun	7,740	7,810	1,516	1,547	11,737	12,083	2.9
Jul	7,751	7,834	1,498	1,561	11,610	12,232	5.4
Aug	7,755	7,840	1,487	1,526	11,534	11,966	3.7
Sep	7,753	7,849	1,445	1,465	11,200	11,500	2.7
Oct	7,746	7,850	1,491	1,511	11,549	11,859	2.7
Nov	7,756	7,851	1,459	1,463	11,315	11,486	1.5
Dec	7,757		1,538		11,928		
Annual	7,735		18,103		140,029		

¹ Includes dry cows, excludes heifers not yet fresh.

² Excludes milk sucked by calves.

Estimated Milk Cows and Production: By Month, United States, 1999-2000

Month	Milk Cows ¹		Milk Per Cow ²		Milk Production ²		
	1999	2000	1999	2000	1999	2000	Change From 1999
	<i>1,000 Head</i>	<i>1,000 Head</i>	<i>Pounds</i>	<i>Pounds</i>	<i>Million Pounds</i>	<i>Million Pounds</i>	<i>Percent</i>
Jan	9,121	9,183	1,494	1,552	13,628	14,252	4.6
Feb	9,123	9,185	1,382	1,480	12,607	13,596	7.8
Mar	9,141	9,194	1,561	1,604	14,270	14,745	3.3
Apr	9,143	9,204	1,524	1,562	13,938	14,380	3.2
May	9,157	9,215	1,579	1,604	14,458	14,778	2.2
Jun	9,166	9,231	1,487	1,518	13,633	14,013	2.8
Jul	9,167	9,244	1,467	1,532	13,444	14,162	5.3
Aug	9,174	9,250	1,456	1,498	13,357	13,854	3.7
Sep	9,171	9,261	1,414	1,438	12,970	13,317	2.7
Oct	9,162	9,262	1,464	1,487	13,412	13,772	2.7
Nov	9,174	9,263	1,432	1,440	13,140	13,339	1.5
Dec	9,175		1,510		13,854		
Annual	9,156		17,771		162,711		

¹ Includes dry cows, excludes heifers not yet fresh.

² Excludes milk sucked by calves.

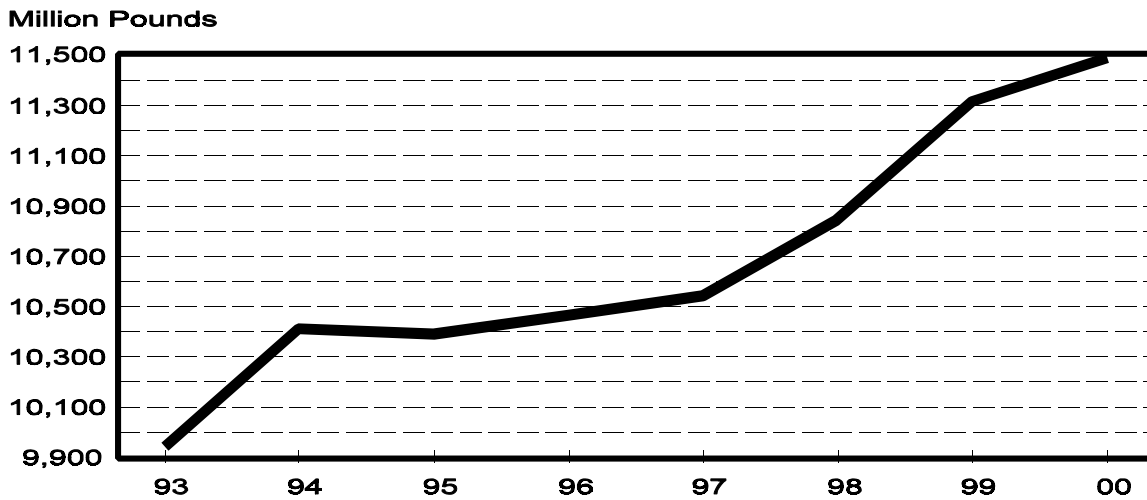
Milk Cows and Production: By State, November 1999-2000

State	Milk Cows ¹		Milk Per Cow ²		Milk Production ²		
	1999	2000	1999	2000	1999	2000	Change From 1999
	<i>1,000 Head</i>	<i>1,000 Head</i>	<i>Pounds</i>	<i>Pounds</i>	<i>Million Pounds</i>	<i>Million Pounds</i>	<i>Percent</i>
AZ	135	140	1,755	1,550	237	217	-8.4
CA	1,484	1,550	1,715	1,670	2,545	2,589	1.7
FL	156	156	1,115	1,200	174	187	7.5
ID	329	357	1,680	1,680	553	600	8.5
IL	121	118	1,330	1,390	161	164	1.9
IN	137	149	1,275	1,400	175	209	19.4
IA	215	215	1,420	1,450	305	312	2.3
KY	131	131	1,005	1,025	132	134	1.5
MI	296	304	1,470	1,540	435	468	7.6
MN	545	530	1,380	1,405	752	745	-0.9
MO	158	151	1,130	1,170	179	177	-1.1
NM	236	261	1,660	1,580	392	412	5.1
NY	700	690	1,360	1,370	952	945	-0.7
OH	259	264	1,370	1,420	355	375	5.6
PA	618	616	1,420	1,425	878	878	
TX	348	345	1,290	1,225	449	423	-5.8
VT	160	158	1,345	1,400	215	221	2.8
VA	121	119	1,315	1,260	159	150	-5.7
WA	245	248	1,805	1,770	442	439	-0.7
WI	1,362	1,349	1,340	1,365	1,825	1,841	0.9
20-State Total	7,756	7,851	1,459	1,463	11,315	11,486	1.5

¹ Includes dry cows, excludes heifers not yet fresh.

² Excludes milk sucked by calves.

**November Milk Production, 1993-2000
20 States**



Milk Cows and Production: By State, October 1999-2000 ¹

State	Milk Cows ²		Milk per Cow ³		Milk Production ³		
	1999	2000	1999	2000	1999	2000	Change From 1999
	<i>1,000 Head</i>	<i>1,000 Head</i>	<i>Pounds</i>	<i>Pounds</i>	<i>Million Pounds</i>	<i>Million Pounds</i>	<i>Percent</i>
AZ	135	140	1,725	1,615	233	226	-3.0
CA	1,480	1,544	1,760	1,735	2,605	2,679	2.8
FL	156	156	1,025	1,120	160	175	9.4
ID	327	356	1,750	1,760	572	627	9.6
IL	121	119	1,340	1,400	162	167	3.1
IN	135	149	1,325	1,420	179	212	18.4
IA	215	215	1,455	1,490	313	320	2.2
KY	131	131	1,015	1,045	133	137	3.0
MI	299	303	1,520	1,570	454	476	4.8
MN	545	530	1,400	1,435	763	761	-0.3
MO	158	152	1,130	1,180	179	179	
NM	235	261	1,685	1,690	396	441	11.4
NY	700	690	1,400	1,410	980	973	-0.7
OH	259	264	1,400	1,450	363	383	5.5
PA	617	618	1,450	1,470	895	908	1.5
TX	346	345	1,255	1,275	434	440	1.4
VT	159	158	1,390	1,445	221	228	3.2
VA	121	119	1,315	1,285	159	153	-3.8
WA	245	248	1,885	1,860	462	461	-0.2
WI	1,362	1,352	1,385	1,415	1,886	1,913	1.4
20-State Total	7,746	7,850	1,491	1,511	11,549	11,859	2.7

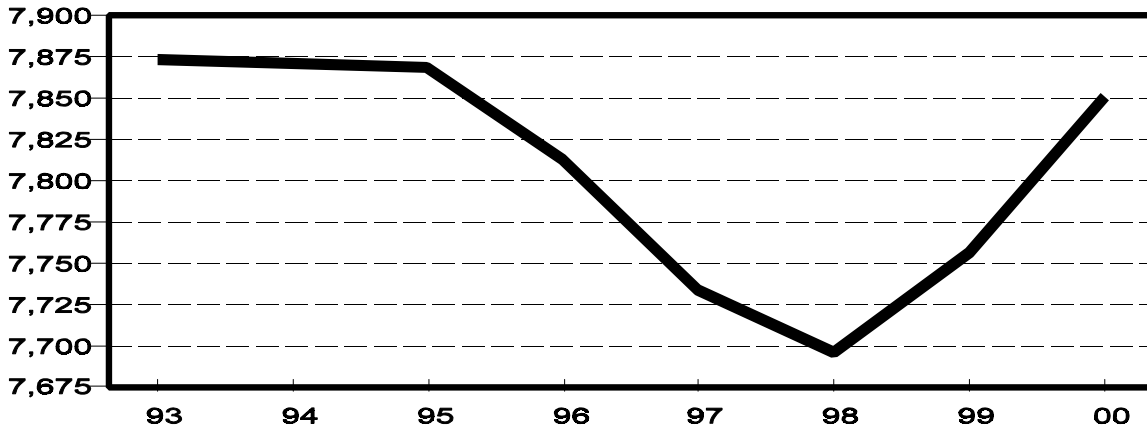
¹ 2000 revised.

² Includes dry cows, excludes heifers not yet fresh.

³ Excludes milk sucked by calves.

**November Milk Cows, 1993-2000
20 States**

Thousand Head



Reliability Statement

Survey Procedures: Primary data used to determine these estimates were obtained from a sample of producers. Individual States maintain a list of all known milk producers and information on the size of their herd. States use all known sources of producers to ensure that their lists are as complete as possible. Generally, all large producers and a sample of small producers are included in the survey. Questionnaires are mailed to producers near the end of the month to obtain data for the first day of the month. Additional reports are obtained by telephone, as needed, to supplement the mail response.

Estimation Procedures: State offices prepare these estimates using survey indications, historic trends, and any available administrative data. Individual State estimates are reviewed by the Agricultural Statistics Board for reasonableness.

Revision Policy: Milk production, rate per cow, and number of cows are subject to revision the following month for monthly States or the following quarter for the quarterly States. Normally, Federal Market Order sales are the main basis for revisions. However, data for all orders are not available in time for this revision. Estimates are again subject to revisions in February each year based on additional administrative data. In the event that additional changes are necessary, a third revision is possible in February the following year. Estimates are again reviewed after data from the five-year Census of Agriculture are available. No revisions are made after that date.

Reliability: Since all operations with dairy animals are not included in the sample, survey estimates are subject to sampling variability. Survey results are also subject to non-sampling errors such as omissions, duplications, and mistakes in reporting, recording, and processing the data. The effects of these errors cannot be measured directly. They are minimized through rigid quality controls in the data collection process and through a careful review of all reported data for consistency and reasonableness.

To assist users in evaluating the reliability of the estimates in this report, the "Root Mean Square Error" is shown for selected items on the next page. The "Root Mean Square Error" is a statistical measure based on past performance and is computed using the differences between first and final estimates. The "Root Mean Square Error" for milk cow inventory estimates over the past 10 July-September quarters is 1.2 percent. This means that chances are 2 out of 3 that the final July-September estimate will not be above or below the current estimate of 9.25 million head by more than 1.2 percent. Chances are 9 out of 10 that the difference will not exceed 2.2 percent.

Reliability of July-September Milk Estimates ¹

Item	Root Mean Square Error	90% Confidence Level		Difference Between First and Latest Estimates			Quarters	
				Average	Smallest	Largest	First Above Latest	First Below Latest
				<i>Million Pounds</i>	<i>Million Pounds</i>	<i>Million Pounds</i>	<i>Number</i>	<i>Number</i>
Milk Production	<i>Percent</i> 0.7	<i>Percent</i> 1.3	<i>Million Pounds</i> 537	<i>Million Pounds</i> 245	<i>Million Pounds</i> 29	<i>Million Pounds</i> 380	<i>Number</i> 10	<i>Number</i> 0
All Milk Cows	<i>Percent</i> 1.2	<i>Percent</i> 2.2	<i>1,000 Head</i> 204	<i>1,000 Head</i> 94	<i>1,000 Head</i> 5	<i>1,000 Head</i> 179	<i>Number</i> 8	<i>Number</i> 2

¹ Based on records for the past 10 July-September quarters.

The next "Milk Production" report will be released at 3 p.m. on January 18, 2001.

The United States Department of Agriculture (USDA) prohibits discrimination in all its programs on the basis of race, color, national origin, gender, religion, age, disability, political beliefs, sexual orientation, and marital or family status. (Not all prohibited bases apply to all programs.) Persons with disabilities who require alternative means for communication of program information (braille, large print, audiotape, etc.) should contact the USDA's TARGET Center at 202-720-2600 (voice and TDD).

To file a complaint of discrimination, write USDA, Director, Office of Civil Rights, Room 326-W, Whitten Building, 14th and Independence Avenue, SW, Washington, D.C., 20250-9410, or call 202-720-5964 (voice or TDD). USDA is an equal opportunity provider and employer.

ACCESS TO REPORTS!!

For your convenience, there are several ways to obtain NASS reports, data products, and services:

INTERNET ACCESS

All NASS reports are available free of charge on the worldwide Internet. For access, connect to the Internet and go to the NASS Home Page at: <http://www.usda.gov/nass/>. Select "Today's Reports" or Publications and then Reports by Calendar or Publications and then Search, by Title or Subject.

E-MAIL SUBSCRIPTION

There are two options for subscribing via e-mail. All NASS reports are available by subscription free of charge direct to your e-mail address. 1) Starting with the NASS Home Page at <http://www.usda.gov/nass/>, click on **Publications**, then click on the **Subscribe by E-mail** button which takes you to the page describing e-mail delivery of reports. Finally, click on **Go to the Subscription Page** and follow the instructions. 2) If you do NOT have Internet access, send an e-mail message to: usda-reports@usda.mannlib.cornell.edu. In the body of the message type the word: **list**.

AUTOFAX ACCESS

NASSFax service is available for some reports from your fax machine. Please call 202-720-2000, using the handset attached to your fax. Respond to the voice prompts. Document 0411 is a list of available reports.

PRINTED REPORTS OR DATA PRODUCTS

CALL OUR TOLL-FREE ORDER DESK: 800-999-6779 (U.S. and Canada)
Other areas, please call 703-834-0125 FAX: 703-834-0110
(Visa, MasterCard, check, or money order acceptable for payment.)

ASSISTANCE

For **assistance** with general agricultural statistics or further information about NASS or its products or services, contact the **Agricultural Statistics Hotline** at 800-727-9540, 7:30 a.m. to 4:00 p.m. ET, or e-mail: nass@nass.usda.gov.