

Released January 18, 2001, by the National Agricultural Statistics Service (NASS), Agricultural Statistics Board, U.S. Department of Agriculture. For information on "Milk Production" call Steve Anderson at 202-690-3236, office hours 7:00 a.m. to 4:30 p.m. ET.

December Milk Production Unchanged

Milk production in the 20 major States during December totaled 11.9 billion pounds, virtually unchanged from production in these same States in December 1999. November revised production, at 11.4 billion pounds was up 1.1 percent from November 1999. The November revision represented a decrease of 0.5 percent or 52 million pounds from last month's preliminary production estimate.

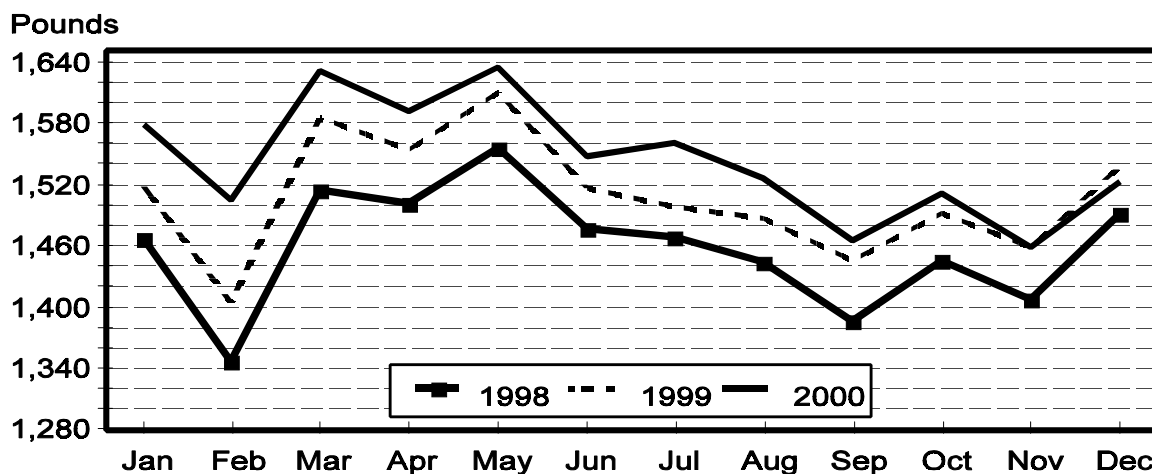
Production per cow in the 20 major States averaged 1,522 pounds for December, 16 pounds below December 1999.

The number of cows on farms in the 20 major States was 7.84 million head, 81,000 head more than December 1999, but 4,000 head less than November 2000.

October-December Milk Production Up 1.2 Percent

The quarterly production of milk for the U.S. was 40.9 billion pounds, 1.2 percent above the October-December period last year. The average number of milk cows in the U.S. during the October-December quarter was 9.25 million head, 80,000 head more than the same period last year.

Monthly Milk per Cow 20 States



Milk Cows and Production: By Quarter, United States, 1999-2000¹

Quarter	Milk Cows ²		Milk Per Cow ³		Milk Production ³		
	1999	2000	1999	2000	1999	2000	Change From 1999
	<i>1,000 Head</i>	<i>1,000 Head</i>	<i>Pounds</i>	<i>Pounds</i>	<i>Million Pounds</i>	<i>Million Pounds</i>	<i>Percent</i>
Jan-Mar	9,128	9,187	4,437	4,636	40,505	42,593	5.2
Apr-Jun	9,155	9,217	4,591	4,684	42,029	43,171	2.7
Jul-Sep	9,171	9,253	4,337	4,465	39,771	41,311	3.9
Oct-Dec	9,170	9,250	4,406	4,419	40,406	40,877	1.2
Annual	9,156	9,227	17,771	18,202	162,711	167,952	3.2

¹ May not add due to rounding.

² Includes dry cows, excludes heifers not yet fresh.

³ Excludes milk sucked by calves.

Milk Cows and Production: By Month, 20 Selected States, 1999-2000

Month	Milk Cows ¹		Milk Per Cow ²		Milk Production ²		
	1999	2000	1999	2000	1999	2000	Change From 1999
	<i>1,000 Head</i>	<i>1,000 Head</i>	<i>Pounds</i>	<i>Pounds</i>	<i>Million Pounds</i>	<i>Million Pounds</i>	<i>Percent</i>
Jan	7,694	7,765	1,518	1,578	11,679	12,256	4.9
Feb	7,696	7,766	1,404	1,505	10,804	11,691	8.2
Mar	7,713	7,774	1,585	1,631	12,228	12,679	3.7
Apr	7,720	7,787	1,554	1,592	11,998	12,399	3.3
May	7,733	7,795	1,610	1,635	12,447	12,743	2.4
Jun	7,740	7,810	1,516	1,547	11,737	12,083	2.9
Jul	7,751	7,834	1,498	1,561	11,610	12,232	5.4
Aug	7,755	7,840	1,487	1,526	11,534	11,966	3.7
Sep	7,753	7,849	1,445	1,465	11,200	11,500	2.7
Oct	7,746	7,850	1,491	1,511	11,549	11,859	2.7
Nov	7,756	7,842	1,459	1,458	11,315	11,434	1.1
Dec	7,757	7,838	1,538	1,522	11,928	11,932	
Annual	7,735	7,813	18,103	18,530	140,029	144,774	3.4

¹ Includes dry cows, excludes heifers not yet fresh.

² Excludes milk sucked by calves.

Estimated Milk Cows and Production: By Month, United States, 1999-2000

Month	Milk Cows ¹		Milk Per Cow ²		Milk Production ²		
	1999	2000	1999	2000	1999	2000	Change From 1999
	<i>1,000 Head</i>	<i>1,000 Head</i>	<i>Pounds</i>	<i>Pounds</i>	<i>Million Pounds</i>	<i>Million Pounds</i>	<i>Percent</i>
Jan	9,121	9,183	1,494	1,552	13,628	14,252	4.6
Feb	9,123	9,185	1,382	1,480	12,607	13,596	7.8
Mar	9,141	9,194	1,561	1,604	14,270	14,745	3.3
Apr	9,143	9,204	1,524	1,562	13,938	14,380	3.2
May	9,157	9,215	1,579	1,604	14,458	14,778	2.2
Jun	9,166	9,231	1,487	1,518	13,633	14,013	2.8
Jul	9,167	9,245	1,467	1,531	13,444	14,156	5.3
Aug	9,174	9,251	1,456	1,497	13,357	13,847	3.7
Sep	9,171	9,262	1,414	1,437	12,970	13,308	2.6
Oct	9,162	9,258	1,464	1,486	13,412	13,762	2.6
Nov	9,174	9,249	1,432	1,435	13,140	13,269	1.0
Dec	9,175	9,244	1,510	1,498	13,854	13,846	-0.1
Annual	9,156	9,227	17,771	18,202	162,711	167,952	3.2

¹ Includes dry cows, excludes heifers not yet fresh.

² Excludes milk sucked by calves.

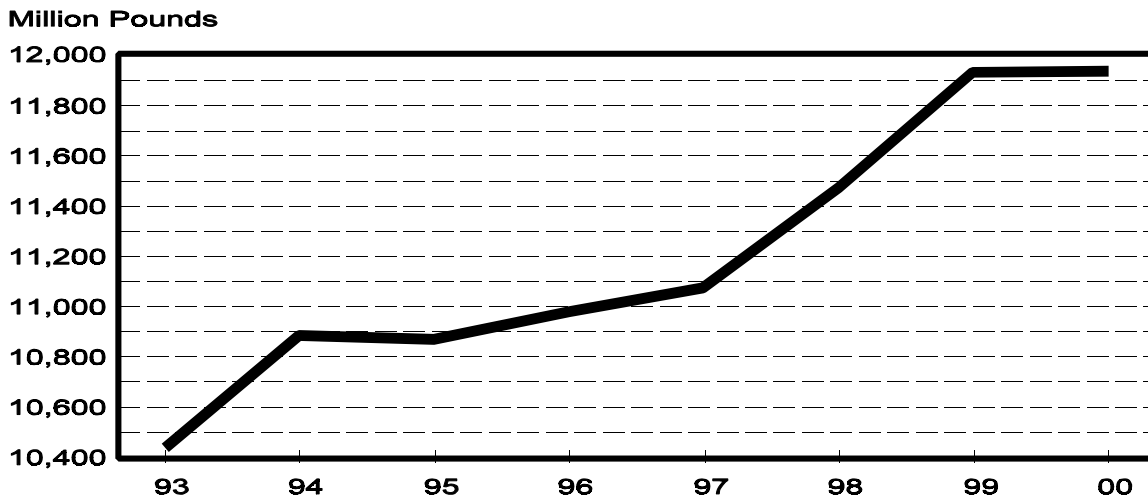
Milk Cows and Production: By State, December 1999-2000

State	Milk Cows ¹		Milk Per Cow ²		Milk Production ²		
	1999	2000	1999	2000	1999	2000	Change From 1999
	<i>1,000 Head</i>	<i>1,000 Head</i>	<i>Pounds</i>	<i>Pounds</i>	<i>Million Pounds</i>	<i>Million Pounds</i>	<i>Percent</i>
AZ	135	140	1,830	1,735	247	243	-1.6
CA	1,488	1,554	1,775	1,745	2,641	2,712	2.7
FL	156	156	1,320	1,325	206	207	0.5
ID	331	354	1,730	1,720	573	609	6.3
IL	121	118	1,430	1,460	173	172	-0.6
IN	138	151	1,355	1,480	187	223	19.3
IA	215	215	1,495	1,495	321	321	
KY	130	131	1,070	1,045	139	137	-1.4
MI	297	301	1,550	1,565	460	471	2.4
MN	540	525	1,495	1,495	807	785	-2.7
MO	158	151	1,200	1,180	190	178	-6.3
NM	236	261	1,720	1,670	406	436	7.4
NY	700	690	1,440	1,400	1,008	966	-4.2
OH	258	265	1,460	1,430	377	379	0.5
PA	619	613	1,480	1,470	916	901	-1.6
TX	350	345	1,390	1,305	487	450	-7.6
VT	159	158	1,430	1,460	227	231	1.8
VA	120	119	1,400	1,355	168	161	-4.2
WA	246	246	1,885	1,790	464	440	-5.2
WI	1,360	1,345	1,420	1,420	1,931	1,910	-1.1
20-State Total	7,757	7,838	1,538	1,522	11,928	11,932	

¹ Includes dry cows, excludes heifers not yet fresh.

² Excludes milk sucked by calves.

**December Milk Production, 1993-2000
20 States**



Milk Cows and Production: By State, November 1999-2000 ¹

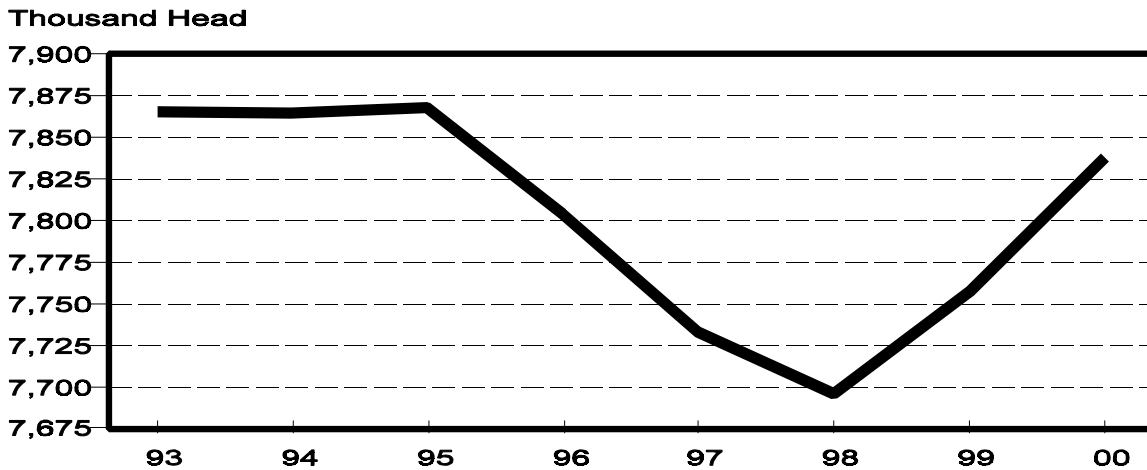
State	Milk Cows ²		Milk per Cow ³		Milk Production ³		Change From 1999
	1999	2000	1999	2000	1999	2000	
	<i>1,000 Head</i>	<i>1,000 Head</i>	<i>Pounds</i>	<i>Pounds</i>	<i>Million Pounds</i>	<i>Million Pounds</i>	<i>Percent</i>
AZ	135	140	1,755	1,550	237	217	-8.4
CA	1,484	1,550	1,715	1,670	2,545	2,589	1.7
FL	156	156	1,115	1,170	174	183	5.2
ID	329	354	1,680	1,670	553	591	6.9
IL	121	118	1,330	1,390	161	164	1.9
IN	137	149	1,275	1,400	175	209	19.4
IA	215	215	1,420	1,450	305	312	2.3
KY	131	131	1,005	1,010	132	132	
MI	296	303	1,470	1,540	435	467	7.4
MN	545	525	1,380	1,410	752	740	-1.6
MO	158	151	1,130	1,170	179	177	-1.1
NM	236	261	1,660	1,580	392	412	5.1
NY	700	690	1,360	1,350	952	932	-2.1
OH	259	264	1,370	1,420	355	375	5.6
PA	618	616	1,420	1,425	878	878	
TX	348	345	1,290	1,225	449	423	-5.8
VT	160	158	1,345	1,380	215	218	1.4
VA	121	119	1,315	1,265	159	151	-5.0
WA	245	248	1,805	1,760	442	436	-1.4
WI	1,362	1,349	1,340	1,355	1,825	1,828	0.2
20-State Total	7,756	7,842	1,459	1,458	11,315	11,434	1.1

¹ 2000 revised.

² Includes dry cows, excludes heifers not yet fresh.

³ Excludes milk sucked by calves.

**December Milk Cows, 1993-2000
20 States**



**Milk Cows and Production: By State and United States,
Revised July-September, 1999-2000**

State	Jul-Sep Milk Cows ¹		Jul-Sep Milk Production ²		Change From 1999 <i>Percent</i>
	1999 <i>1,000 Head</i>	2000 <i>1,000 Head</i>	1999 <i>Million Pounds</i>	2000 <i>Million Pounds</i>	
AL	27	24	78	70	-10.3
AK	1.0	0.9	3.48	3.28	-5.7
AZ	135	140	641	674	5.1
AR	42	42	122	120	-1.6
CA	1,472	1,533	7,645	8,063	5.5
CO	83	89	434	487	12.2
CT	28	26	126	114	-9.5
DE	11.0	11.0	41.0	42.7	4.1
FL	158	157	514	533	3.7
GA	88	87	313	310	-1.0
HI	8.6	8.0	30.3	30.4	0.3
ID	324	355	1,696	1,893	11.6
IL	121	120	472	502	6.4
IN	136	151	529	636	20.2
IA	216	215	912	968	6.1
KS	86	91	325	360	10.8
KY	132	132	386	405	4.9
LA	61	57	145	143	-1.4
ME	41	39	173	166	-4.0
MD	85	83	332	325	-2.1
MA	24	22	104	95	-8.7
MI	303	301	1,385	1,430	3.2
MN	548	532	2,270	2,270	
MS	37	36	114	112	-1.8
MO	157	153	479	524	9.4
MT	18	18	76	78	2.6
NE	74	77	281	322	14.6
NV	25	25	128	128	
NH	19	18	79	76	-3.8
NJ	17	16	68	65	-4.4
NM	235	255	1,158	1,301	12.3
NY	702	690	3,012	3,001	-0.4
NC	73	71	289	282	-2.4
ND	48	51	168	188	11.9
OH	259	263	1,116	1,146	2.7
OK	92	91	294	319	8.5
OR	89	90	423	428	1.2
PA	615	619	2,670	2,727	2.1
RI	2.0	1.7	7.7	6.8	-11.7
SC	23	22	79	81	2.5
SD	102	102	375	413	10.1
TN	95	94	320	320	
TX	346	347	1,192	1,234	3.5
UT	93	97	412	445	8.0
VT	160	160	679	693	2.1
VA	121	120	450	447	-0.7
WA	248	247	1,414	1,420	0.4
WV	18	17	66	64	-3.0
WI	1,366	1,351	5,724	5,831	1.9
WY	6.0	5.5	21.0	19.3	-8.1
US ³	9,171	9,253	39,771	41,311	3.9

¹ Includes dry cows, excludes heifers not yet fresh.

² Excludes milk sucked by calves.

³ May not add due to rounding.

**Milk Cows and Production: By State and United States,
Preliminary October-December, 1999-2000**

State	Oct-Dec Milk Cows ¹		Oct-Dec Milk Production ²		Change From 1999 Percent
	1999 <i>1,000 Head</i>	2000 <i>1,000 Head</i>	1999 <i>Million Pounds</i>	2000 <i>Million Pounds</i>	
AL	27	23	90	78	-13.3
AK	0.9	1.0	3.03	3.41	12.5
AZ	135	140	717	686	-4.3
AR	42	41	125	118	-5.6
CA	1,484	1,549	7,791	7,980	2.4
CO	83	90	441	476	7.9
CT	28	26	124	115	-7.3
DE	11.0	10.5	42.5	43.5	2.4
FL	156	156	540	565	4.6
GA	88	86	344	340	-1.2
HI	8.6	7.5	26.3	26.2	-0.4
ID	329	355	1,698	1,827	7.6
IL	121	118	496	503	1.4
IN	137	150	541	644	19.0
IA	215	215	939	953	1.5
KS	87	94	360	395	9.7
KY	131	131	404	406	0.5
LA	61	57	165	163	-1.2
ME	41	39	167	163	-2.4
MD	85	82	345	328	-4.9
MA	24	22	102	93	-8.8
MI	297	302	1,349	1,414	4.8
MN	543	527	2,322	2,286	-1.6
MS	36	36	129	128	-0.8
MO	158	151	548	534	-2.6
MT	18	19	76	79	3.9
NE	75	79	296	327	10.5
NV	25	25	123	125	1.6
NH	19	18	78	76	-2.6
NJ	16	16	64	63	-1.6
NM	236	261	1,194	1,289	8.0
NY	700	690	2,940	2,871	-2.3
NC	73	69	299	288	-3.7
ND	49	49	167	172	3.0
OH	259	264	1,095	1,137	3.8
OK	92	91	313	314	0.3
OR	89	90	414	401	-3.1
PA	618	616	2,689	2,687	-0.1
RI	1.9	1.6	7.2	6.4	-11.1
SC	23	22	89	88	-1.1
SD	102	101	385	409	6.2
TN	95	94	345	340	-1.4
TX	348	345	1,370	1,313	-4.2
UT	93	95	405	412	1.7
VT	159	158	663	677	2.1
VA	121	119	486	465	-4.3
WA	245	247	1,368	1,337	-2.3
WV	18	17	69	64	-7.2
WI	1,361	1,349	5,642	5,651	0.2
WY	6.0	5.2	19.8	17.2	-13.1
US ³	9,170	9,250	40,406	40,877	1.2

¹ Includes dry cows, excludes heifers not yet fresh.

² Excludes milk sucked by calves.

³ May not add due to rounding.

Reliability Statement

Survey Procedures: Primary data used to determine these estimates were obtained from a sample of producers. Individual States maintain a list of all known milk producers and information on the size of their herd. States use all known sources of producers to ensure that their lists are as complete as possible. Generally, all large producers and a sample of small producers are included in the survey. Questionnaires are mailed to producers near the end of the month to obtain data for the first day of the month. Additional reports are obtained by telephone, as needed, to supplement the mail response.

Estimation Procedures: State offices prepare these estimates using survey indications, historic trends, and any available administrative data. Individual State estimates are reviewed by the Agricultural Statistics Board for reasonableness.

Revision Policy: Milk production, rate per cow, and number of cows are subject to revision the following month for monthly States or the following quarter for the quarterly States. Normally, Federal Market Order sales are the main basis for revisions. However, data for all orders are not available in time for this revision. Estimates are again subject to revisions in February each year based on additional administrative data. In the event that additional changes are necessary, a third revision is possible in February the following year. Estimates are again reviewed after data from the five-year Census of Agriculture are available. No revisions are made after that date.

Reliability: Since all operations with dairy animals are not included in the sample, survey estimates are subject to sampling variability. Survey results are also subject to non-sampling errors such as omissions, duplications, and mistakes in reporting, recording, and processing the data. The effects of these errors cannot be measured directly. They are minimized through rigid quality controls in the data collection process and through a careful review of all reported data for consistency and reasonableness.

To assist users in evaluating the reliability of the estimates in this report, the "Root Mean Square Error" is shown for selected items on the next page. The "Root Mean Square Error" is a statistical measure based on past performance and is computed using the differences between first and final estimates. The "Root Mean Square Error" for milk cow inventory estimates over the past 10 October-December quarters is 1.2 percent. This means that chances are 2 out of 3 that the final October-December estimate will not be above or below the current estimate of 9.25 million head by more than 1.2 percent. Chances are 9 out of 10 that the difference will not exceed 2.2 percent.

Reliability of October-December Milk Estimates ¹

Item	Root Mean Square Error	90% Confidence Level		Difference Between First and Latest Estimates			Quarters	
				Average	Smallest	Largest	First Above Latest	First Below Latest
				<i>Million Pounds</i>	<i>Million Pounds</i>	<i>Million Pounds</i>	<i>Number</i>	<i>Number</i>
Milk Production	<i>Percent</i> 0.5 <i>Percent</i>	<i>Percent</i> 0.9 <i>Percent</i>	<i>Million Pounds</i> 368 <i>1,000 Head</i>	<i>Million Pounds</i> 152 <i>1,000 Head</i>	<i>Million Pounds</i> 1 <i>1,000 Head</i>	<i>Million Pounds</i> 385 <i>1,000 Head</i>	<i>Number</i> 10 <i>Number</i>	<i>Number</i> 0 <i>Number</i>
All Milk Cows	1.2	2.2	204	93	2	195	9	1

¹ Based on records for the past 10 October-December quarters.

The next "Milk Production" report will be released at 3 p.m. on February 16, 2001.

The United States Department of Agriculture (USDA) prohibits discrimination in all its programs on the basis of race, color, national origin, gender, religion, age, disability, political beliefs, sexual orientation, and marital or family status. (Not all prohibited bases apply to all programs.) Persons with disabilities who require alternative means for communication of program information (braille, large print, audiotape, etc.) should contact the USDA's TARGET Center at 202-720-2600 (voice and TDD).

To file a complaint of discrimination, write USDA, Director, Office of Civil Rights, Room 326-W, Whitten Building, 14th and Independence Avenue, SW, Washington, D.C., 20250-9410, or call 202-720-5964 (voice or TDD). USDA is an equal opportunity provider and employer.

ACCESS TO REPORTS!!

For your convenience, there are several ways to obtain NASS reports, data products, and services:

INTERNET ACCESS

All NASS reports are available free of charge on the worldwide Internet. For access, connect to the Internet and go to the NASS Home Page at: <http://www.usda.gov/nass/>. Select "Today's Reports" or Publications and then Reports by Calendar or Publications and then Search, by Title or Subject.

E-MAIL SUBSCRIPTION

There are two options for subscribing via e-mail. All NASS reports are available by subscription free of charge direct to your e-mail address. 1) Starting with the NASS Home Page at <http://www.usda.gov/nass/>, click on **Publications**, then click on the **Subscribe by E-mail** button which takes you to the page describing e-mail delivery of reports. Finally, click on **Go to the Subscription Page** and follow the instructions. 2) If you do NOT have Internet access, send an e-mail message to: usda-reports@usda.mannlib.cornell.edu. In the body of the message type the word: **list**.

AUTOFAX ACCESS

NASSFax service is available for some reports from your fax machine. Please call 202-720-2000, using the handset attached to your fax. Respond to the voice prompts. Document 0411 is a list of available reports.

PRINTED REPORTS OR DATA PRODUCTS

CALL OUR TOLL-FREE ORDER DESK: 800-999-6779 (U.S. and Canada)
Other areas, please call 703-834-0125 FAX: 703-834-0110
(Visa, MasterCard, check, or money order acceptable for payment.)

ASSISTANCE

For **assistance** with general agricultural statistics or further information about NASS or its products or services, contact the **Agricultural Statistics Hotline** at 800-727-9540, 7:30 a.m. to 4:00 p.m. ET, or e-mail: nass@nass.usda.gov.

Agricultural Outlook Forum 2001



**February 22-23, 2001
Arlington, Virginia**

www.usda.gov/oce
agforum@oce.usda.gov
(202) 720-3050

USDA's 77th outlook conference will offer timely forecasts of farm prospects and insight on developments affecting the farm economy. The program will feature top business leaders and officials. Networking opportunities abound at this popular event, attended by over 1,300 people last February.

Policy Debate. Future farm policy will be a hot topic during 2001. The Forum will open with high-level panels on the next farm bill and world trade talks. Focus sessions during the two-day program will preview key policy issues on next year's agenda.

Farm Prospects. Attendees will hear leading analysts discuss the 2001 commodity outlook and industry trends, and receive USDA's latest 10-year projections.

Act Now. Get registration details and program updates at the Forum website. Can't attend in person? Sign up now to get speeches by e-mail after the Forum, or download them from the website.