

Milk Production

Released March 16, 2001, by the National Agricultural Statistics Service (NASS), Agricultural Statistics Board, U.S. Department of Agriculture. For information on "Milk Production" call Ty Kalas at 202-690-3236, office hours 7:00 a.m. to 4:30 p.m. ET.

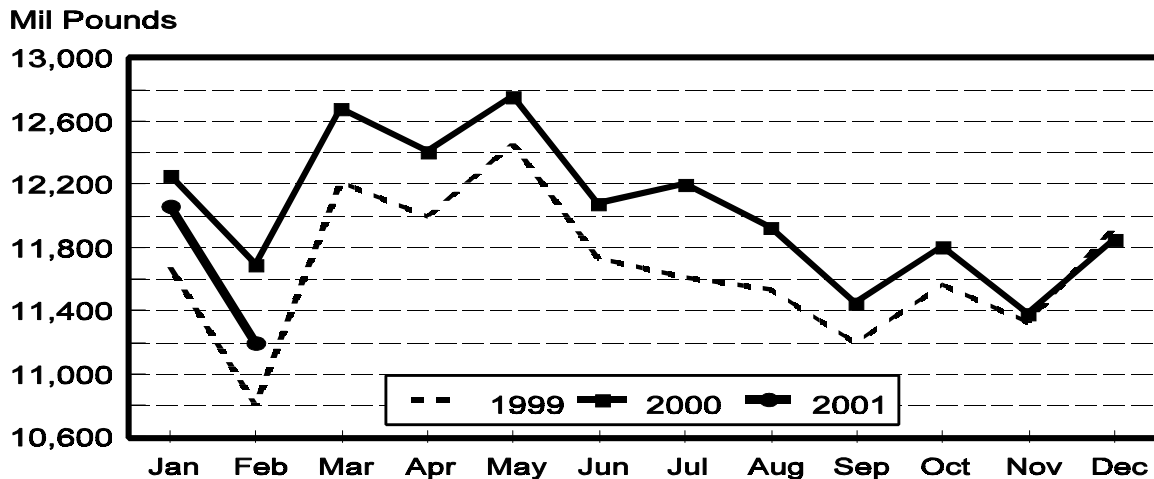
February Milk Production Down 4.3 Percent

Milk production in the 20 major States during February totaled 11.2 billion pounds, down 4.3 percent from February 2000. Most of the decline is due to an extra day of production in February 2000, because of leap year. Adjusting production for the additional day would put February 2001 milk production down 0.9 percent from last year. January revised production, at 12.1 billion pounds, was down 1.6 percent from January 2000. The January revision represented a decrease of 0.1 percent or 11 million pounds from last month's preliminary production estimate.

Production per cow in the 20 major States averaged 1,440 pounds for February, 66 pounds below February 2000.

The number of cows on farms in the 20 major States was 7.77 million head, 7,000 head more than February 2000, but 10,000 head less than January 2001.

Monthly Milk Production 20 States



Milk Cows and Production: By Quarter, United States, 2000-2001 ¹

Quarter	Milk Cows ²		Milk Per Cow ³		Milk Production ³		
	2000	2001	2000	2001	2000	2001	Change From 2000
	<i>1,000 Head</i>	<i>1,000 Head</i>	<i>Pounds</i>	<i>Pounds</i>	<i>Million Pounds</i>	<i>Million Pounds</i>	<i>Percent</i>
Jan-Mar	9,188		4,640		42,630		
Apr-Jun	9,213		4,688		43,189		
Jul-Sep	9,229		4,460		41,161		
Oct-Dec	9,211		4,416		40,678		
Annual	9,210		18,204		167,658		

¹ May not add due to rounding.

² Includes dry cows, excludes heifers not yet fresh.

³ Excludes milk sucked by calves.

Milk Cows and Production: By Month, 20 Selected States, 2000-2001

Month	Milk Cows ¹		Milk Per Cow ²		Milk Production ²		
	2000	2001	2000	2001	2000	2001	Change From 2000
	<i>1,000 Head</i>	<i>1,000 Head</i>	<i>Pounds</i>	<i>Pounds</i>	<i>Million Pounds</i>	<i>Million Pounds</i>	<i>Percent</i>
Jan	7,764	7,783	1,579	1,550	12,259	12,062	-1.6
Feb	7,766	7,773	1,506	1,440	11,694	11,194	-4.3
Mar	7,776		1,632		12,687		
Apr	7,789		1,593		12,411		
May	7,799		1,636		12,758		
Jun	7,808		1,547		12,082		
Jul	7,821		1,561		12,205		
Aug	7,820		1,525		11,928		
Sep	7,820		1,464		11,451		
Oct	7,817		1,511		11,813		
Nov	7,805		1,459		11,385		
Dec	7,803		1,519		11,855		
Annual	7,799		18,532		144,528		

¹ Includes dry cows, excludes heifers not yet fresh.

² Excludes milk sucked by calves.

Estimated Milk Cows and Production: By Month, United States, 2000-2001 ¹

Month	Milk Cows ²		Milk Per Cow ³		Milk Production ³		
	2000	2001	2000	2001	2000	2001	Change From 2000
	<i>1,000 Head</i>	<i>1,000 Head</i>	<i>Pounds</i>	<i>Pounds</i>	<i>Million Pounds</i>	<i>Million Pounds</i>	<i>Percent</i>
Jan	9,183	9,180	1,553	1,525	14,263	13,998	-1.9
Feb	9,183	9,168	1,482	1,417	13,606	12,991	-4.5
Mar	9,197		1,605		14,761		
Apr	9,202		1,564		14,390		
May	9,214		1,605		14,791		
Jun	9,224		1,519		14,008		
Jul	9,229		1,530		14,117		
Aug	9,228		1,495		13,798		
Sep	9,229		1,435		13,246		
Oct	9,222		1,486		13,708		
Nov	9,208		1,435		13,212		
Dec	9,204		1,495		13,758		
Annual	9,210		18,204		167,658		

¹ 2001 revised.

² Includes dry cows, excludes heifers not yet fresh.

³ Excludes milk sucked by calves.

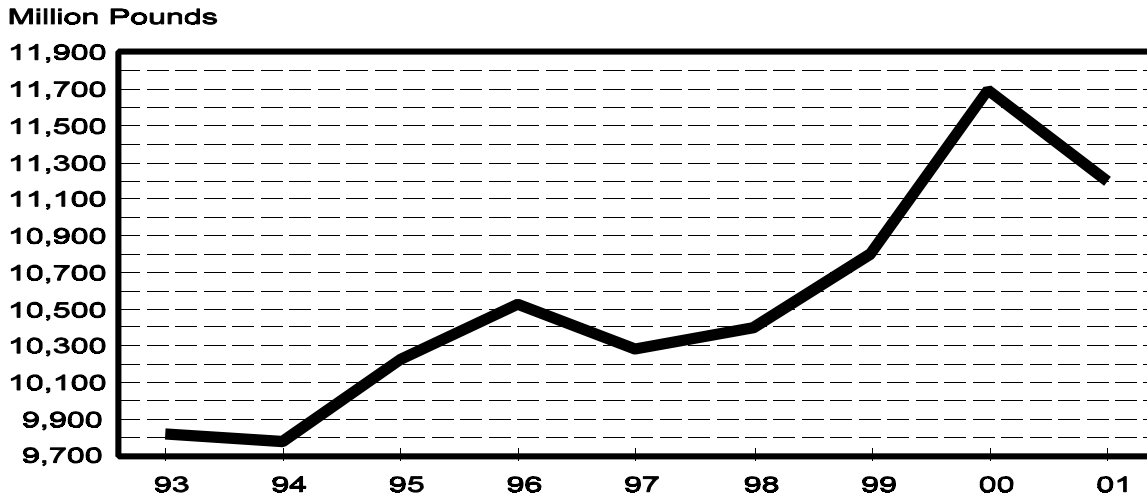
Milk Cows and Production: By State, February 2000-2001

State	Milk Cows ¹		Milk Per Cow ²		Milk Production ²		
	2000	2001	2000	2001	2000	2001	Change From 2000
	<i>1,000 Head</i>	<i>1,000 Head</i>	<i>Pounds</i>	<i>Pounds</i>	<i>Million Pounds</i>	<i>Million Pounds</i>	<i>Percent</i>
AZ	137	140	1,935	1,655	265	232	-12.5
CA	1,496	1,567	1,710	1,630	2,558	2,554	-0.2
FL	157	155	1,410	1,360	221	211	-4.5
ID	332	356	1,610	1,580	535	562	5.0
IL	120	117	1,480	1,380	178	161	-9.6
IN	141	150	1,330	1,305	188	196	4.3
IA	215	215	1,500	1,410	323	303	-6.2
KY	130	130	1,090	1,025	142	133	-6.3
MI	296	302	1,510	1,460	447	441	-1.3
MN	540	520	1,465	1,390	791	723	-8.6
MO	157	148	1,220	1,070	192	158	-17.7
NM	238	261	1,730	1,550	412	405	-1.7
NY	700	670	1,370	1,380	959	925	-3.5
OH	259	263	1,410	1,320	365	347	-4.9
PA	617	602	1,475	1,420	910	855	-6.0
TX	350	343	1,480	1,265	518	434	-16.2
VT	160	154	1,405	1,335	225	206	-8.4
VA	120	118	1,335	1,265	160	149	-6.9
WA	246	247	1,795	1,690	442	417	-5.7
WI	1,355	1,315	1,375	1,355	1,863	1,782	-4.3
20-State Total	7,766	7,773	1,506	1,440	11,694	11,194	-4.3

¹ Includes dry cows, excludes heifers not yet fresh.

² Excludes milk sucked by calves.

**February Milk Production, 1993-2001
20 States**



Milk Cows and Production: By State, January 2000-2001 ¹

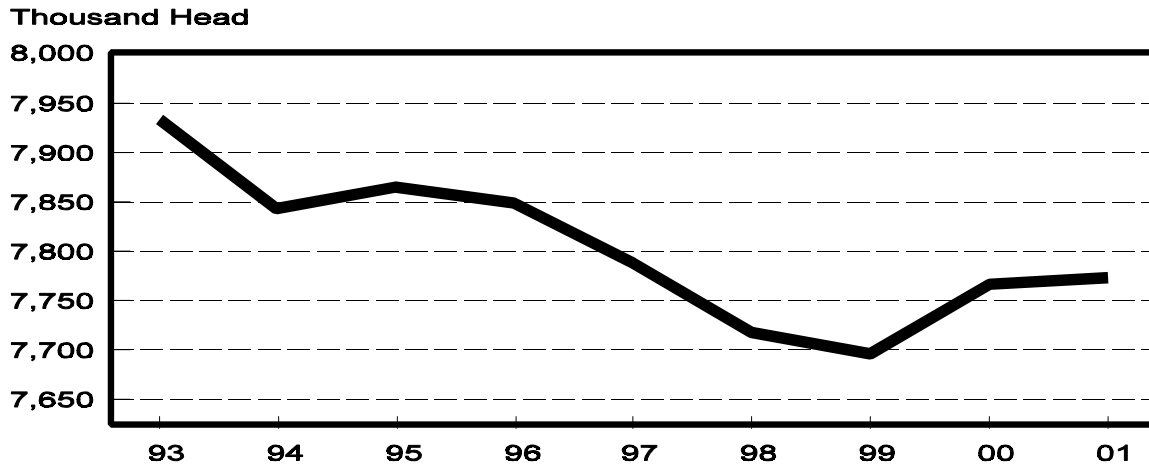
State	Milk Cows ²		Milk per Cow ³		Milk Production ³		
	2000	2001	2000	2001	2000	2001	Change From 2000
	<i>1,000 Head</i>	<i>1,000 Head</i>	<i>Pounds</i>	<i>Pounds</i>	<i>Million Pounds</i>	<i>Million Pounds</i>	<i>Percent</i>
AZ	137	140	1,925	1,795	264	251	-4.9
CA	1,492	1,562	1,815	1,760	2,708	2,749	1.5
FL	156	155	1,450	1,415	226	219	-3.1
ID	332	356	1,730	1,740	574	619	7.8
IL	120	118	1,500	1,470	180	173	-3.9
IN	139	151	1,400	1,395	195	211	8.2
IA	215	215	1,555	1,525	334	328	-1.8
KY	130	130	1,155	1,090	150	142	-5.3
MI	298	301	1,590	1,585	474	477	0.6
MN	540	520	1,545	1,525	834	793	-4.9
MO	158	149	1,240	1,150	196	171	-12.8
NM	237	261	1,780	1,680	422	438	3.8
NY	700	670	1,450	1,460	1,015	978	-3.6
OH	259	264	1,470	1,400	381	370	-2.9
PA	617	607	1,520	1,520	938	923	-1.6
TX	350	343	1,515	1,360	530	466	-12.1
VT	160	154	1,485	1,460	238	225	-5.5
VA	120	118	1,425	1,380	171	163	-4.7
WA	246	247	1,900	1,845	467	456	-2.4
WI	1,358	1,322	1,445	1,445	1,962	1,910	-2.7
20-State Total	7,764	7,783	1,579	1,550	12,259	12,062	-1.6

¹ 2001 revised.

² Includes dry cows, excludes heifers not yet fresh.

³ Excludes milk sucked by calves.

**February Milk Cows, 1993-2001
20 States**



Reliability Statement

Survey Procedures: Primary data used to determine these estimates were obtained from a sample of producers. Individual States maintain a list of all known milk producers and information on the size of their herd. States use all known sources of producers to ensure that their lists are as complete as possible. Generally, all large producers and a sample of small producers are included in the survey. Questionnaires are mailed to producers near the end of the month to obtain data for the first day of the month. Additional reports are obtained by telephone, as needed, to supplement the mail response.

Estimation Procedures: State offices prepare these estimates using survey indications, historic trends, and any available administrative data. Individual State estimates are reviewed by the Agricultural Statistics Board for reasonableness.

Revision Policy: Milk production, rate per cow, and number of cows are subject to revision the following month for monthly States or the following quarter for the quarterly States. Normally, Federal Market Order sales are the main basis for revisions. However, data for all orders are not available in time for this revision. Estimates are again subject to revisions in February each year based on additional administrative data. In the event that additional changes are necessary, a third revision is possible in February the following year. Estimates are again reviewed after data from the five-year Census of Agriculture are available. No revisions are made after that date.

Reliability: Since all operations with dairy animals are not included in the sample, survey estimates are subject to sampling variability. Survey results are also subject to non-sampling errors such as omissions, duplications, and mistakes in reporting, recording, and processing the data. The effects of these errors cannot be measured directly. They are minimized through rigid quality controls in the data collection process and through a careful review of all reported data for consistency and reasonableness.

To assist users in evaluating the reliability of the estimates in this report, the "Root Mean Square Error" is shown for selected items on the next page. The "Root Mean Square Error" is a statistical measure based on past performance and is computed using the differences between first and final estimates. The "Root Mean Square Error" for milk cow inventory estimates over the past 10 October-December quarters is 1.2 percent. This means that chances are 2 out of 3 that the final October-December estimate will not be above or below the current estimate of 9.21 million head by more than 1.2 percent. Chances are 9 out of 10 that the difference will not exceed 2.2 percent.

Reliability of October-December Milk Estimates ¹

Item	Root Mean Square Error	90% Confidence Level		Difference Between First and Latest Estimates			Quarters	
				Average	Smallest	Largest	First Above Latest	First Below Latest
				<i>Million Pounds</i>	<i>Million Pounds</i>	<i>Million Pounds</i>	<i>Number</i>	<i>Number</i>
Milk Production	<i>Percent</i>	<i>Percent</i>	<i>Million Pounds</i>	<i>Million Pounds</i>	<i>Million Pounds</i>	<i>Million Pounds</i>	<i>Number</i>	<i>Number</i>
	0.5	0.9	366	151	1	385	9	1
All Milk Cows	<i>Percent</i>	<i>Percent</i>	<i>1,000 Head</i>	<i>1,000 Head</i>	<i>1,000 Head</i>	<i>1,000 Head</i>	<i>Number</i>	<i>Number</i>
	1.2	2.2	203	93	2	195	9	1

¹ Based on records for the past 10 October-December quarters.

The next "Milk Production" report will be released at 3 p.m. ET on April 17, 2001.

The United States Department of Agriculture (USDA) prohibits discrimination in all its programs on the basis of race, color, national origin, gender, religion, age, disability, political beliefs, sexual orientation, and marital or family status. (Not all prohibited bases apply to all programs.) Persons with disabilities who require alternative means for communication of program information (braille, large print, audiotape, etc.) should contact the USDA's TARGET Center at 202-720-2600 (voice and TDD).

To file a complaint of discrimination, write USDA, Director, Office of Civil Rights, Room 326-W, Whitten Building, 14th and Independence Avenue, SW, Washington, D.C., 20250-9410, or call 202-720-5964 (voice or TDD). USDA is an equal opportunity provider and employer.

ACCESS TO REPORTS!!

For your convenience, there are several ways to obtain NASS reports, data products, and services:

INTERNET ACCESS

All NASS reports are available free of charge on the worldwide Internet. For access, connect to the Internet and go to the NASS Home Page at: <http://www.usda.gov/nass/>. Select "Today's Reports" or Publications and then Reports by Calendar or Publications and then Search, by Title or Subject.

E-MAIL SUBSCRIPTION

There are two options for subscribing via e-mail. All NASS reports are available by subscription free of charge direct to your e-mail address. 1) Starting with the NASS Home Page at <http://www.usda.gov/nass/>, click on **Publications**, then click on the **Subscribe by E-mail** button which takes you to the page describing e-mail delivery of reports. Finally, click on **Go to the Subscription Page** and follow the instructions. 2) If you do NOT have Internet access, send an e-mail message to: usda-reports@usda.mannlib.cornell.edu. In the body of the message type the word: **list**.

AUTOFAX ACCESS

NASSFax service is available for some reports from your fax machine. Please call 202-720-2000, using the handset attached to your fax. Respond to the voice prompts. Document 0411 is a list of available reports.

----- PRINTED REPORTS OR DATA PRODUCTS

CALL OUR TOLL-FREE ORDER DESK: 800-999-6779 (U.S. and Canada)
Other areas, please call 703-834-0125 FAX: 703-834-0110
(Visa, MasterCard, check, or money order acceptable for payment.)

ASSISTANCE

For **assistance** with general agricultural statistics or further information about NASS or its products or services, contact the **Agricultural Statistics Hotline** at **800-727-9540**, 7:30 a.m. to 4:00 p.m. ET, or e-mail: nass@nass.usda.gov.