

Released April 17, 2001, by the National Agricultural Statistics Service (NASS), Agricultural Statistics Board, U.S. Department of Agriculture. For information on "Milk Production" call Ty Kalas at 202-690-3236, office hours 7:00 a.m. to 4:30 p.m. ET.

March Milk Production Down 2.2 Percent

Milk production in the 20 major States during March totaled 12.4 billion pounds, down 2.2 percent from March 2000. February revised production, at 11.1 billion pounds, was down 5.0 percent from February 2000. However, adjusting production for leap year would put February milk production down 1.6 percent. The February revision represented a decrease of 0.7 percent or 82 million pounds from last month's preliminary production estimate.

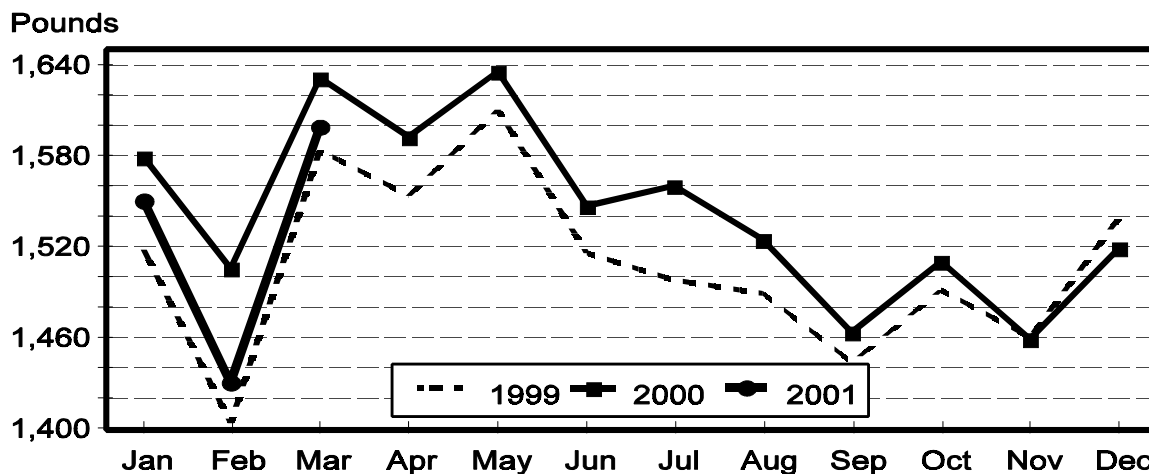
Production per cow in the 20 major States averaged 1,599 pounds for March, 33 pounds below March 2000.

The number of cows on farms in the 20 major States was 7.76 million head, 18,000 head less than March 2000, and 9,000 head less than February 2001.

January-March Milk Production Down 3.1 Percent

The quarterly production of milk for the U.S. was 41.3 billion pounds, 3.1 percent below the January-March period last year. The average number of milk cows in the U.S. during the January-March quarter was 9.16 million head, 33,000 head less than the same period last year.

Monthly Milk per Cow 20 States



Milk Cows and Production: By Quarter, United States, 2000-2001 ¹

Quarter	Milk Cows ²		Milk Per Cow ³		Milk Production ³		Change From 2000
	2000	2001	2000	2001	2000	2001	
	<i>1,000 Head</i>	<i>1,000 Head</i>	<i>Pounds</i>	<i>Pounds</i>	<i>Million Pounds</i>	<i>Million Pounds</i>	<i>Percent</i>
Jan-Mar	9,188	9,155	4,640	4,514	42,630	41,326	-3.1
Apr-Jun	9,213		4,688		43,189		
Jul-Sep	9,229		4,460		41,161		
Oct-Dec	9,211		4,416		40,678		
Annual	9,210		18,204		167,658		

¹ May not add due to rounding.

² Includes dry cows, excludes heifers not yet fresh.

³ Excludes milk sucked by calves.

Milk Cows and Production: By Month, 20 Selected States, 2000-2001

Month	Milk Cows ¹		Milk Per Cow ²		Milk Production ²		Change From 2000
	2000	2001	2000	2001	2000	2001	
	<i>1,000 Head</i>	<i>1,000 Head</i>	<i>Pounds</i>	<i>Pounds</i>	<i>Million Pounds</i>	<i>Million Pounds</i>	<i>Percent</i>
Jan	7,764	7,783	1,579	1,550	12,259	12,062	-1.6
Feb	7,766	7,767	1,506	1,431	11,694	11,112	-5.0
Mar	7,776	7,758	1,632	1,599	12,687	12,403	-2.2
Apr	7,789		1,593		12,411		
May	7,799		1,636		12,758		
Jun	7,808		1,547		12,082		
Jul	7,821		1,561		12,205		
Aug	7,820		1,525		11,928		
Sep	7,820		1,464		11,451		
Oct	7,817		1,511		11,813		
Nov	7,805		1,459		11,385		
Dec	7,803		1,519		11,855		
Annual	7,799		18,532		144,528		

¹ Includes dry cows, excludes heifers not yet fresh.

² Excludes milk sucked by calves.

Estimated Milk Cows and Production: By Month, United States, 2000-2001 ¹

Month	Milk Cows ²		Milk Per Cow ³		Milk Production ³		Change From 2000
	2000	2001	2000	2001	2000	2001	
	<i>1,000 Head</i>	<i>1,000 Head</i>	<i>Pounds</i>	<i>Pounds</i>	<i>Million Pounds</i>	<i>Million Pounds</i>	<i>Percent</i>
Jan	9,183	9,171	1,553	1,528	14,263	14,011	-1.8
Feb	9,183	9,153	1,482	1,410	13,606	12,907	-5.1
Mar	9,197	9,142	1,605	1,576	14,761	14,408	-2.4
Apr	9,202		1,564		14,390		
May	9,214		1,605		14,791		
Jun	9,224		1,519		14,008		
Jul	9,229		1,530		14,117		
Aug	9,228		1,495		13,798		
Sep	9,229		1,435		13,246		
Oct	9,222		1,486		13,708		
Nov	9,208		1,435		13,212		
Dec	9,204		1,495		13,758		
Annual	9,210		18,204		167,658		

¹ 2001 revised.

² Includes dry cows, excludes heifers not yet fresh.

³ Excludes milk sucked by calves.

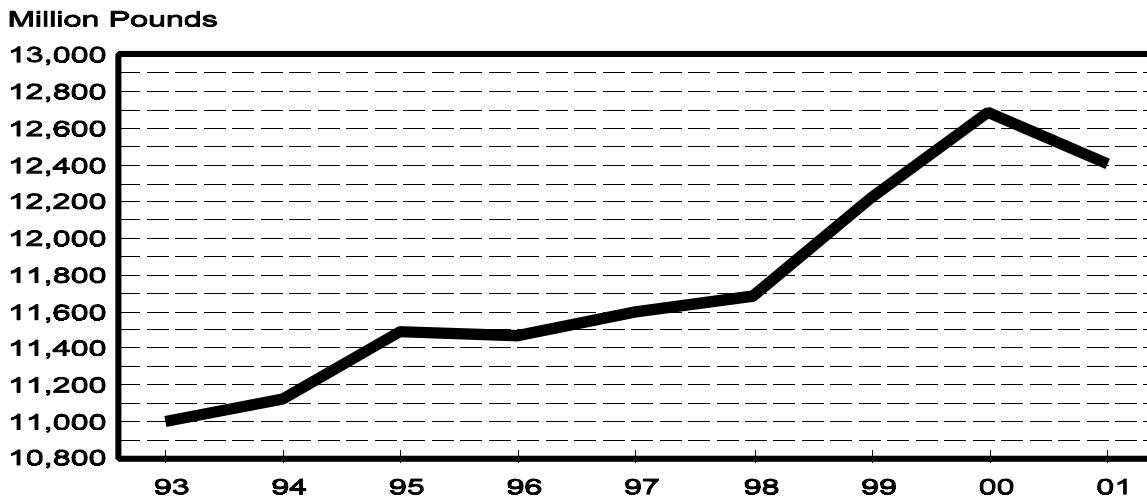
Milk Cows and Production: By State, March 2000-2001

State	Milk Cows ¹		Milk Per Cow ²		Milk Production ²		Change From 2000
	2000	2001	2000	2001	2000	2001	
	<i>1,000 Head</i>	<i>1,000 Head</i>	<i>Pounds</i>	<i>Pounds</i>	<i>Million Pounds</i>	<i>Million Pounds</i>	<i>Percent</i>
AZ	137	140	2,115	1,880	290	263	-9.3
CA	1,501	1,570	1,825	1,785	2,739	2,802	2.3
FL	157	154	1,530	1,530	240	236	-1.7
ID	334	357	1,720	1,770	574	632	10.1
IL	120	117	1,580	1,580	190	185	-2.6
IN	143	151	1,435	1,470	205	222	8.3
IA	215	213	1,610	1,570	346	334	-3.5
KY	132	127	1,205	1,190	159	151	-5.0
MI	296	303	1,640	1,620	485	491	1.2
MN	540	520	1,585	1,560	856	811	-5.3
MO	156	148	1,350	1,270	211	188	-10.9
NM	240	261	1,890	1,760	454	459	1.1
NY	698	670	1,495	1,480	1,044	992	-5.0
OH	261	262	1,530	1,450	399	380	-4.8
PA	618	600	1,620	1,580	1,001	948	-5.3
TX	350	343	1,655	1,425	579	489	-15.5
VT	160	153	1,515	1,495	242	229	-5.4
VA	120	118	1,450	1,415	174	167	-4.0
WA	246	246	1,945	1,895	478	466	-2.5
WI	1,352	1,305	1,495	1,500	2,021	1,958	-3.1
20-State Total	7,776	7,758	1,632	1,599	12,687	12,403	-2.2

¹ Includes dry cows, excludes heifers not yet fresh.

² Excludes milk sucked by calves.

**March Milk Production, 1993-2001
20 States**



Milk Cows and Production: By State, February 2000-2001 ¹

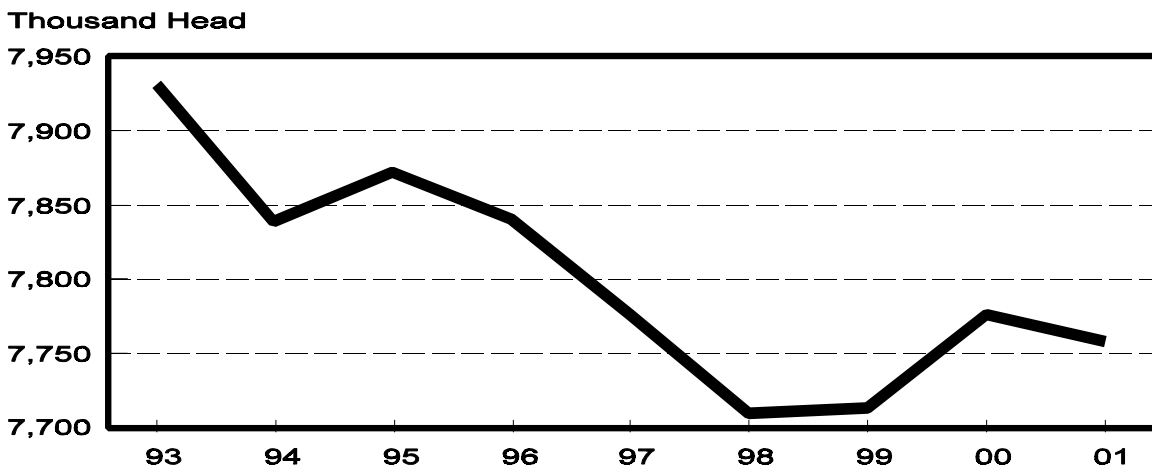
State	Milk Cows ²		Milk per Cow ³		Milk Production ³		Change From 2000
	2000	2001	2000	2001	2000	2001	
	<i>1,000 Head</i>	<i>1,000 Head</i>	<i>Pounds</i>	<i>Pounds</i>	<i>Million Pounds</i>	<i>Million Pounds</i>	<i>Percent</i>
AZ	137	140	1,935	1,655	265	232	-12.5
CA	1,496	1,567	1,710	1,615	2,558	2,531	-1.1
FL	157	155	1,410	1,360	221	211	-4.5
ID	332	357	1,610	1,580	535	564	5.4
IL	120	117	1,480	1,380	178	161	-9.6
IN	141	151	1,330	1,305	188	197	4.8
IA	215	215	1,500	1,410	323	303	-6.2
KY	130	128	1,090	1,040	142	133	-6.3
MI	296	302	1,510	1,460	447	441	-1.3
MN	540	520	1,465	1,390	791	723	-8.6
MO	157	148	1,220	1,070	192	158	-17.7
NM	238	261	1,730	1,550	412	405	-1.7
NY	700	670	1,370	1,310	959	878	-8.4
OH	259	263	1,410	1,320	365	347	-4.9
PA	617	602	1,475	1,420	910	855	-6.0
TX	350	343	1,480	1,265	518	434	-16.2
VT	160	153	1,405	1,335	225	204	-9.3
VA	120	118	1,335	1,280	160	151	-5.6
WA	246	247	1,795	1,680	442	415	-6.1
WI	1,355	1,310	1,375	1,350	1,863	1,769	-5.0
20-State Total	7,766	7,767	1,506	1,431	11,694	11,112	-5.0

¹ 2001 revised.

² Includes dry cows, excludes heifers not yet fresh.

³ Excludes milk sucked by calves.

**March Milk Cows, 1993-2001
20 States**



**Milk Cows and Production: By State and United States,
Revised October-December, 1999-2000**

State	Oct-Dec Milk Cows ¹		Oct-Dec Milk Production ²		Change From 1999
	1999	2000	1999	2000	
	<i>1,000 Head</i>	<i>1,000 Head</i>	<i>Million Pounds</i>	<i>Million Pounds</i>	<i>Percent</i>
AL	27	23	92	78	-15.2
AK	0.9	1.0	3.03	3.41	12.5
AZ	135	140	717	687	-4.2
AR	42	41	125	124	-0.8
CA	1,484	1,550	7,789	7,970	2.3
CO	84	90	441	483	9.5
CT	28	26	124	114	-8.1
DE	11.0	9.0	42.5	33.1	-22.1
FL	156	156	540	569	5.4
GA	88	86	344	337	-2.0
HI	8.6	7.6	26.5	25.9	-2.3
ID	329	355	1,698	1,830	7.8
IL	121	118	496	503	1.4
IN	137	149	541	601	11.1
IA	215	215	939	953	1.5
KS	88	94	370	395	6.8
KY	131	131	410	405	-1.2
LA	61	57	165	163	-1.2
ME	40	39	165	160	-3.0
MD	85	82	345	324	-6.1
MA	24	22	102	92	-9.8
MI	298	300	1,355	1,410	4.1
MN	543	527	2,322	2,279	-1.9
MS	36	36	129	126	-2.3
MO	158	151	555	534	-3.8
MT	18	19	76	79	3.9
NE	75	79	296	316	6.8
NV	25	25	113	120	6.2
NH	19	18	78	74	-5.1
NJ	16	16	64	63	-1.6
NM	236	261	1,194	1,289	8.0
NY	700	672	2,965	2,834	-4.4
NC	73	69	299	288	-3.7
ND	49	48	167	168	0.6
OH	259	264	1,092	1,080	-1.1
OK	92	91	313	314	0.3
OR	89	90	414	415	0.2
PA	618	616	2,689	2,687	-0.1
RI	1.9	1.6	7.2	6.2	-13.9
SC	23	22	89	88	-1.1
SD	102	101	385	409	6.2
TN	95	94	345	340	-1.4
TX	347	345	1,368	1,313	-4.0
UT	93	95	408	405	-0.7
VT	159	158	663	673	1.5
VA	121	119	480	462	-3.8
WA	245	247	1,368	1,347	-1.5
WV	18	17	69	64	-7.2
WI	1,361	1,333	5,642	5,627	-0.3
WY	6.0	5.0	19.8	17.0	-14.1
US ³	9,171	9,211	40,440	40,678	0.6

¹ Includes dry cows, excludes heifers not yet fresh.

² Excludes milk sucked by calves.

³ May not add due to rounding.

**Milk Cows and Production: By State and United States,
Preliminary January-March, 2000-2001**

State	Jan-Mar Milk Cows ¹		Jan-Mar Milk Production ²		Change From 2000
	2000	2001	2000	2001	
	<i>1,000 Head</i>	<i>1,000 Head</i>	<i>Million Pounds</i>	<i>Million Pounds</i>	<i>Percent</i>
AL	26	22	104	86	-17.3
AK	0.9	1.1	2.95	3.41	15.6
AZ	137	140	819	746	-8.9
AR	42	39	141	125	-11.3
CA	1,496	1,566	8,005	8,082	1.0
CO	87	90	466	480	3.0
CT	27	26	129	121	-6.2
DE	11.0	9.0	47.0	36.5	-22.3
FL	157	155	687	666	-3.1
GA	88	86	402	387	-3.7
HI	8.4	7.7	28.4	26.7	-6.0
ID	333	357	1,683	1,815	7.8
IL	120	117	548	519	-5.3
IN	141	151	588	630	7.1
IA	215	214	1,003	965	-3.8
KS	88	94	385	395	2.6
KY	131	128	451	426	-5.5
LA	60	56	210	184	-12.4
ME	40	37	171	158	-7.6
MD	85	82	357	347	-2.8
MA	24	21	103	91	-11.7
MI	297	302	1,406	1,409	0.2
MN	540	520	2,481	2,327	-6.2
MS	36	36	162	148	-8.6
MO	157	148	599	517	-13.7
MT	18	19	77	84	9.1
NE	75	77	309	295	-4.5
NV	25	25	115	119	3.5
NH	19	18	81	80	-1.2
NJ	16	16	69	68	-1.4
NM	238	261	1,288	1,302	1.1
NY	699	670	3,018	2,848	-5.6
NC	72	68	316	299	-5.4
ND	49	47	173	165	-4.6
OH	260	263	1,145	1,097	-4.2
OK	92	90	331	326	-1.5
OR	90	90	422	396	-6.2
PA	617	603	2,849	2,726	-4.3
RI	1.9	1.5	7.7	6.1	-20.8
SC	23	22	102	99	-2.9
SD	102	100	399	405	1.5
TN	96	93	380	350	-7.9
TX	350	343	1,627	1,389	-14.6
UT	94	93	410	392	-4.4
VT	160	153	705	658	-6.7
VA	120	118	505	481	-4.8
WA	246	247	1,387	1,337	-3.6
WV	17	16	70	61	-12.9
WI	1,355	1,312	5,846	5,637	-3.6
WY	6.0	4.6	19.8	15.2	-23.2
US ³	9,188	9,155	42,630	41,326	-3.1

¹ Includes dry cows, excludes heifers not yet fresh.

² Excludes milk sucked by calves.

³ May not add due to rounding.

Reliability Statement

Survey Procedures: Primary data used to determine these estimates were obtained from a sample of producers. Individual States maintain a list of all known milk producers and information on the size of their herd. States use all known sources of producers to ensure that their lists are as complete as possible. Generally, all large producers and a sample of small producers are included in the survey. Questionnaires are mailed to producers near the end of the month to obtain data for the first day of the month. Additional reports are obtained by telephone, as needed, to supplement the mail response.

Estimation Procedures: State offices prepare these estimates using survey indications, historic trends, and any available administrative data. Individual State estimates are reviewed by the Agricultural Statistics Board for reasonableness.

Revision Policy: Milk production, rate per cow, and number of cows are subject to revision the following month for monthly States or the following quarter for the quarterly States. Normally, Federal Market Order sales are the main basis for revisions. However, data for all orders are not available in time for this revision. Estimates are again subject to revisions in February each year based on additional administrative data. In the event that additional changes are necessary, a third revision is possible in February the following year. Estimates are again reviewed after data from the five-year Census of Agriculture are available. No revisions are made after that date.

Reliability: Since all operations with dairy animals are not included in the sample, survey estimates are subject to sampling variability. Survey results are also subject to non-sampling errors such as omissions, duplications, and mistakes in reporting, recording, and processing the data. The effects of these errors cannot be measured directly. They are minimized through rigid quality controls in the data collection process and through a careful review of all reported data for consistency and reasonableness.

To assist users in evaluating the reliability of the estimates in this report, the "Root Mean Square Error" is shown for selected items on the next page. The "Root Mean Square Error" is a statistical measure based on past performance and is computed using the differences between first and final estimates. The "Root Mean Square Error" for milk cow inventory estimates over the past 10 January-March quarters is 1.0 percent. This means that chances are 2 out of 3 that the final January-March estimate will not be above or below the current estimate of 9.16 million head by more than 1.0 percent. Chances are 9 out of 10 that the difference will not exceed 1.8 percent.

Reliability of January-March Milk Estimates ¹

Item	Root Mean Square Error	90% Confidence Level		Difference Between First and Latest Estimates			Quarters	
				Average	Smallest	Largest	First Above Latest	First Below Latest
Milk Production	<i>Percent</i>	<i>Percent</i>	<i>Million Pounds</i>	<i>Million Pounds</i>	<i>Million Pounds</i>	<i>Million Pounds</i>	<i>Number</i>	<i>Number</i>
	0.5	0.9	372	154	18	321	7	3
All Milk Cows	<i>Percent</i>	<i>Percent</i>	<i>1,000 Head</i>	<i>1,000 Head</i>	<i>1,000 Head</i>	<i>1,000 Head</i>	<i>Number</i>	<i>Number</i>
	1.0	1.8	165	70	2	187	7	3

¹ Based on records for the past 10 January-March quarters.

The next "Milk Production" report will be released at 3 p.m. ET on May 16, 2001.

The United States Department of Agriculture (USDA) prohibits discrimination in all its programs on the basis of race, color, national origin, gender, religion, age, disability, political beliefs, sexual orientation, and marital or family status. (Not all prohibited bases apply to all programs.) Persons with disabilities who require alternative means for communication of program information (braille, large print, audiotape, etc.) should contact the USDA's TARGET Center at 202-720-2600 (voice and TDD).

To file a complaint of discrimination, write USDA, Director, Office of Civil Rights, Room 326-W, Whitten Building, 14th and Independence Avenue, SW, Washington, D.C., 20250-9410, or call 202-720-5964 (voice or TDD). USDA is an equal opportunity provider and employer.

ACCESS TO REPORTS!!

For your convenience, there are several ways to obtain NASS reports, data products, and services:

INTERNET ACCESS

All NASS reports are available free of charge on the worldwide Internet. For access, connect to the Internet and go to the NASS Home Page at: <http://www.usda.gov/nass/>. Select "Today's Reports" or Publications and then Reports by Calendar or Publications and then Search, by Title or Subject.

E-MAIL SUBSCRIPTION

There are two options for subscribing via e-mail. All NASS reports are available by subscription free of charge direct to your e-mail address. 1) Starting with the NASS Home Page at <http://www.usda.gov/nass/>, click on **Publications**, then click on the **Subscribe by E-mail** button which takes you to the page describing e-mail delivery of reports. Finally, click on **Go to the Subscription Page** and follow the instructions. 2) If you do NOT have Internet access, send an e-mail message to: usda-reports@usda.mannlib.cornell.edu. In the body of the message type the word: **list**.

AUTOFAX ACCESS

NASSFax service is available for some reports from your fax machine. Please call 202-720-2000, using the handset attached to your fax. Respond to the voice prompts. Document 0411 is a list of available reports.

PRINTED REPORTS OR DATA PRODUCTS

CALL OUR TOLL-FREE ORDER DESK: 800-999-6779 (U.S. and Canada)
Other areas, please call 703-834-0125 FAX: 703-834-0110
(Visa, MasterCard, check, or money order acceptable for payment.)

ASSISTANCE

For **assistance** with general agricultural statistics or further information about NASS or its products or services, contact the **Agricultural Statistics Hotline** at **800-727-9540**, 7:30 a.m. to 4:00 p.m. ET, or e-mail: nass@nass.usda.gov.