

Released May 16, 2001, by the National Agricultural Statistics Service (NASS), Agricultural Statistics Board, U.S. Department of Agriculture. For information on "Milk Production" call Ty Kalas at 202-690-3236, office hours 7:00 a.m. to 4:30 p.m. ET.

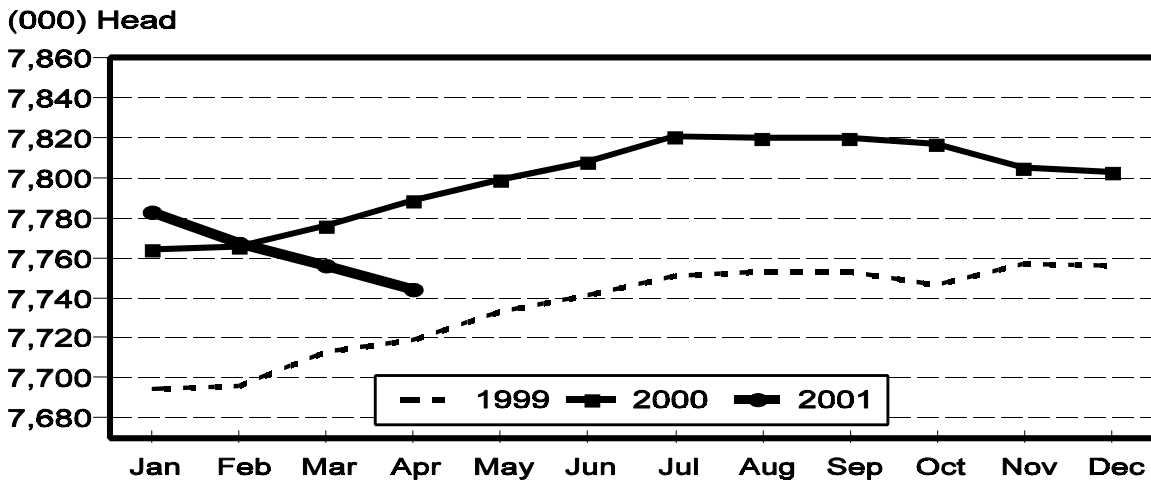
April Milk Production Down 1.9 Percent

Milk production in the 20 major States during April totaled 12.2 billion pounds, down 1.9 percent from April 2000. March revised production, at 12.4 billion pounds, was down 2.3 percent from March 2000. The March revision represented a decrease of 2 million pounds, virtually unchanged from last month's preliminary production estimate.

Production per cow in the 20 major States averaged 1,572 pounds for April, 21 pounds below April 2000.

The number of milk cows on farms in the 20 major States was 7.74 million head, 45,000 head less than April 2000, and 12,000 head less than March 2001.

Monthly Milk Cows 20 States



Milk Cows and Production: By Quarter, United States, 2000-2001 ¹

Quarter	Milk Cows ²		Milk Per Cow ³		Milk Production ³		
	2000	2001	2000	2001	2000	2001	Change From 2000
	<i>1,000 Head</i>	<i>1,000 Head</i>	<i>Pounds</i>	<i>Pounds</i>	<i>Million Pounds</i>	<i>Million Pounds</i>	<i>Percent</i>
Jan-Mar	9,188	9,155	4,640	4,514	42,630	41,324	-3.1
Apr-Jun	9,213		4,688		43,189		
Jul-Sep	9,229		4,460		41,161		
Oct-Dec	9,211		4,416		40,678		
Annual	9,210		18,204		167,658		

¹ May not add due to rounding.

² Includes dry cows, excludes heifers not yet fresh.

³ Excludes milk sucked by calves.

Milk Cows and Production: By Month, 20 Selected States, 2000-2001

Month	Milk Cows ¹		Milk Per Cow ²		Milk Production ²		
	2000	2001	2000	2001	2000	2001	Change From 2000
	<i>1,000 Head</i>	<i>1,000 Head</i>	<i>Pounds</i>	<i>Pounds</i>	<i>Million Pounds</i>	<i>Million Pounds</i>	<i>Percent</i>
Jan	7,764	7,783	1,579	1,550	12,259	12,062	-1.6
Feb	7,766	7,767	1,506	1,431	11,694	11,112	-5.0
Mar	7,776	7,756	1,632	1,599	12,687	12,401	-2.3
Apr	7,789	7,744	1,593	1,572	12,411	12,172	-1.9
May	7,799		1,636		12,758		
Jun	7,808		1,547		12,082		
Jul	7,821		1,561		12,205		
Aug	7,820		1,525		11,928		
Sep	7,820		1,464		11,451		
Oct	7,817		1,511		11,813		
Nov	7,805		1,459		11,385		
Dec	7,803		1,519		11,855		
Annual	7,799		18,532		144,528		

¹ Includes dry cows, excludes heifers not yet fresh.

² Excludes milk sucked by calves.

Estimated Milk Cows and Production: By Month, United States, 2000-2001 ¹

Month	Milk Cows ²		Milk Per Cow ³		Milk Production ³		
	2000	2001	2000	2001	2000	2001	Change From 2000
	<i>1,000 Head</i>	<i>1,000 Head</i>	<i>Pounds</i>	<i>Pounds</i>	<i>Million Pounds</i>	<i>Million Pounds</i>	<i>Percent</i>
Jan	9,183	9,171	1,553	1,528	14,263	14,011	-1.8
Feb	9,183	9,153	1,482	1,410	13,606	12,907	-5.1
Mar	9,197	9,141	1,605	1,576	14,761	14,406	-2.4
Apr	9,202	9,127	1,564	1,549	14,390	14,140	-1.7
May	9,214		1,605		14,791		
Jun	9,224		1,519		14,008		
Jul	9,229		1,530		14,117		
Aug	9,228		1,495		13,798		
Sep	9,229		1,435		13,246		
Oct	9,222		1,486		13,708		
Nov	9,208		1,435		13,212		
Dec	9,204		1,495		13,758		
Annual	9,210		18,204		167,658		

¹ 2001 revised.

² Includes dry cows, excludes heifers not yet fresh.

³ Excludes milk sucked by calves.

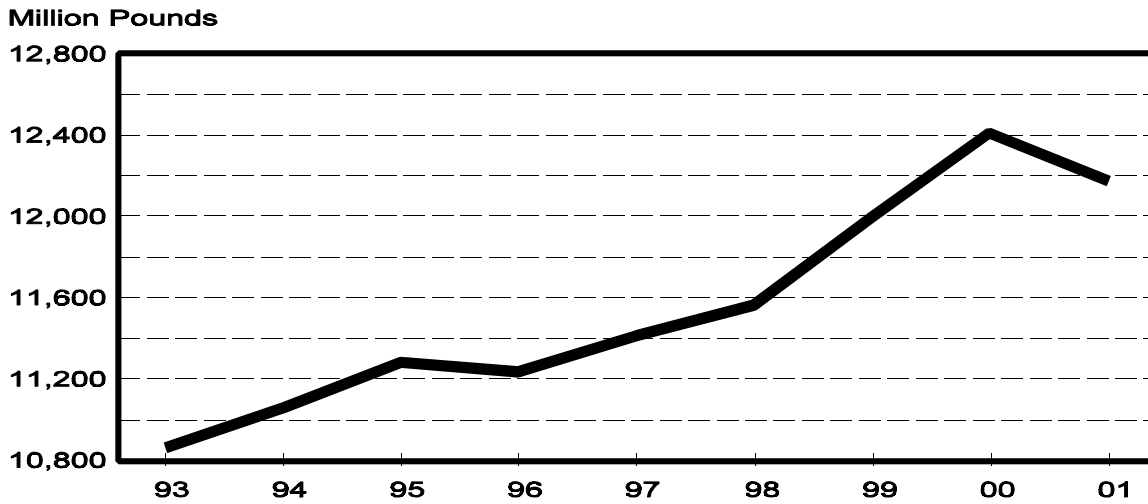
Milk Cows and Production: By State, April 2000-2001

State	Milk Cows ¹		Milk Per Cow ²		Milk Production ²		Change From 2000
	2000	2001	2000	2001	2000	2001	
	<i>1,000 Head</i>	<i>1,000 Head</i>	<i>Pounds</i>	<i>Pounds</i>	<i>Million Pounds</i>	<i>Million Pounds</i>	<i>Percent</i>
AZ	138	140	2,080	1,855	287	260	-9.4
CA	1,506	1,574	1,815	1,765	2,733	2,778	1.6
FL	158	154	1,470	1,500	232	231	-0.4
ID	339	360	1,710	1,750	580	630	8.6
IL	120	117	1,520	1,555	182	182	
IN	145	152	1,370	1,450	199	220	10.6
IA	215	212	1,560	1,545	335	328	-2.1
KY	133	128	1,165	1,170	155	150	-3.2
MI	299	303	1,610	1,595	481	483	0.4
MN	540	515	1,530	1,520	826	783	-5.2
MO	157	148	1,330	1,265	209	187	-10.5
NM	241	261	1,835	1,760	442	459	3.8
NY	695	670	1,460	1,450	1,015	972	-4.2
OH	262	261	1,430	1,440	375	376	0.3
PA	615	599	1,590	1,540	978	922	-5.7
TX	350	339	1,550	1,405	543	476	-12.3
VT	160	152	1,475	1,455	236	221	-6.4
VA	120	118	1,410	1,400	169	165	-2.4
WA	247	246	1,935	1,860	478	458	-4.2
WI	1,349	1,295	1,450	1,460	1,956	1,891	-3.3
20-State Total	7,789	7,744	1,593	1,572	12,411	12,172	-1.9

¹ Includes dry cows, excludes heifers not yet fresh.

² Excludes milk sucked by calves.

**April Milk Production, 1993-2001
20 States**



Milk Cows and Production: By State, March 2000-2001 ¹

State	Milk Cows ²		Milk per Cow ³		Milk Production ³		
	2000	2001	2000	2001	2000	2001	Change From 2000
	<i>1,000 Head</i>	<i>1,000 Head</i>	<i>Pounds</i>	<i>Pounds</i>	<i>Million Pounds</i>	<i>Million Pounds</i>	<i>Percent</i>
AZ	137	140	2,115	1,855	290	260	-10.3
CA	1,501	1,570	1,825	1,790	2,739	2,810	2.6
FL	157	154	1,530	1,530	240	236	-1.7
ID	334	358	1,720	1,770	574	634	10.5
IL	120	117	1,580	1,580	190	185	-2.6
IN	143	151	1,435	1,470	205	222	8.3
IA	215	213	1,610	1,570	346	334	-3.5
KY	132	127	1,205	1,180	159	150	-5.7
MI	296	303	1,640	1,620	485	491	1.2
MN	540	520	1,585	1,550	856	806	-5.8
MO	156	148	1,350	1,270	211	188	-10.9
NM	240	261	1,890	1,760	454	459	1.1
NY	698	670	1,495	1,480	1,044	992	-5.0
OH	261	262	1,530	1,450	399	380	-4.8
PA	618	600	1,620	1,580	1,001	948	-5.3
TX	350	341	1,655	1,435	579	489	-15.5
VT	160	152	1,515	1,495	242	227	-6.2
VA	120	118	1,450	1,425	174	168	-3.4
WA	246	246	1,945	1,885	478	464	-2.9
WI	1,352	1,305	1,495	1,500	2,021	1,958	-3.1
20-State Total	7,776	7,756	1,632	1,599	12,687	12,401	-2.3

¹ 2001 revised.

² Includes dry cows, excludes heifers not yet fresh.

³ Excludes milk sucked by calves.

**April Milk Cows, 1993-2001
20 States**



Reliability Statement

Survey Procedures: Primary data used to determine these estimates were obtained from a sample of producers. Individual States maintain a list of all known milk producers and information on the size of their herd. States use all known sources of producers to ensure that their lists are as complete as possible. Generally, all large producers and a sample of small producers are included in the survey. Questionnaires are mailed to producers near the end of the month to obtain data for the first day of the month. Additional reports are obtained by telephone, as needed, to supplement the mail response.

Estimation Procedures: State offices prepare these estimates using survey indications, historic trends, and any available administrative data. Individual State estimates are reviewed by the Agricultural Statistics Board for reasonableness.

Revision Policy: Milk production, rate per cow, and number of cows are subject to revision the following month for monthly States or the following quarter for the quarterly States. Normally, Federal Market Order sales are the main basis for revisions. However, data for all orders are not available in time for this revision. Estimates are again subject to revisions in February each year based on additional administrative data. In the event that additional changes are necessary, a third revision is possible in February the following year. Estimates are again reviewed after data from the five-year Census of Agriculture are available. No revisions are made after that date.

Reliability: Since all operations with dairy animals are not included in the sample, survey estimates are subject to sampling variability. Survey results are also subject to non-sampling errors such as omissions, duplications, and mistakes in reporting, recording, and processing the data. The effects of these errors cannot be measured directly. They are minimized through rigid quality controls in the data collection process and through a careful review of all reported data for consistency and reasonableness.

To assist users in evaluating the reliability of the estimates in this report, the "Root Mean Square Error" is shown for selected items on the next page. The "Root Mean Square Error" is a statistical measure based on past performance and is computed using the differences between first and final estimates. The "Root Mean Square Error" for milk cow inventory estimates over the past 10 January-March quarters is 1.0 percent. This means that chances are 2 out of 3 that the final January-March estimate will not be above or below the current estimate of 9.16 million head by more than 1.0 percent. Chances are 9 out of 10 that the difference will not exceed 1.8 percent.

Reliability of January-March Milk Estimates ¹

Item	Root Mean Square Error	90% Confidence Level		Difference Between First and Latest Estimates			Quarters	
				Average	Smallest	Largest	First Above Latest	First Below Latest
				<i>Million Pounds</i>	<i>Million Pounds</i>	<i>Million Pounds</i>	<i>Number</i>	<i>Number</i>
Milk Production	<i>Percent</i> 0.5	<i>Percent</i> 0.9	<i>Million Pounds</i> 372	<i>Million Pounds</i> 154	<i>Million Pounds</i> 18	<i>Million Pounds</i> 321	<i>Number</i> 7	<i>Number</i> 3
All Milk Cows	<i>Percent</i> 1.0	<i>Percent</i> 1.8	<i>1,000 Head</i> 165	<i>1,000 Head</i> 70	<i>1,000 Head</i> 2	<i>1,000 Head</i> 187	<i>Number</i> 7	<i>Number</i> 3

¹ Based on records for the past 10 January-March quarters.

The next "Milk Production" report will be released at 3 p.m. ET on June 15, 2001.

The United States Department of Agriculture (USDA) prohibits discrimination in all its programs on the basis of race, color, national origin, gender, religion, age, disability, political beliefs, sexual orientation, and marital or family status. (Not all prohibited bases apply to all programs.) Persons with disabilities who require alternative means for communication of program information (braille, large print, audiotape, etc.) should contact the USDA's TARGET Center at 202-720-2600 (voice and TDD).

To file a complaint of discrimination, write USDA, Director, Office of Civil Rights, Room 326-W, Whitten Building, 1400 Independence Avenue, SW, Washington, D.C., 20250-9410, or call 202-720-5964 (voice or TDD). USDA is an equal opportunity provider and employer.

ACCESS TO REPORTS!!

For your convenience, there are several ways to obtain NASS reports, data products, and services:

INTERNET ACCESS

All NASS reports are available free of charge on the worldwide Internet. For access, connect to the Internet and go to the NASS Home Page at: <http://www.usda.gov/nass/>. Select "Today's Reports" or Publications and then Reports by Calendar or Publications and then Search, by Title or Subject.

E-MAIL SUBSCRIPTION

There are two options for subscribing via e-mail. All NASS reports are available by subscription free of charge direct to your e-mail address. 1) Starting with the NASS Home Page at <http://www.usda.gov/nass/>, click on **Publications**, then click on the **Subscribe by E-mail** button which takes you to the page describing e-mail delivery of reports. Finally, click on **Go to the Subscription Page** and follow the instructions. 2) If you do NOT have Internet access, send an e-mail message to: usda-reports@usda.mannlib.cornell.edu. In the body of the message type the word: **list**.

AUTOFAX ACCESS

NASSFax service is available for some reports from your fax machine. Please call 202-720-2000, using the handset attached to your fax. Respond to the voice prompts. Document 0411 is a list of available reports.

PRINTED REPORTS OR DATA PRODUCTS

CALL OUR TOLL-FREE ORDER DESK: 800-999-6779 (U.S. and Canada)
Other areas, please call 703-834-0125 FAX: 703-834-0110
(Visa, MasterCard, check, or money order acceptable for payment.)

ASSISTANCE

For **assistance** with general agricultural statistics or further information about NASS or its products or services, contact the **Agricultural Statistics Hotline** at **800-727-9540**, 7:30 a.m. to 4:00 p.m. ET, or e-mail: nass@nass.usda.gov.