

Released July 17, 2001, by the National Agricultural Statistics Service (NASS), Agricultural Statistics Board, U.S. Department of Agriculture. For information on "Milk Production" call Ty Kalas at 202-690-3236, office hours 7:00 a.m. to 4:30 p.m. ET.

## June Milk Production Down 0.5 Percent

**Milk production** in the 20 major States during June totaled 12.0 billion pounds, down 0.5 percent from June 2000. May revised production, at 12.6 billion pounds, was down 0.9 percent from May 2000. The May revision represented an increase of 0.2 percent or 24 million pounds from last month's preliminary production estimate.

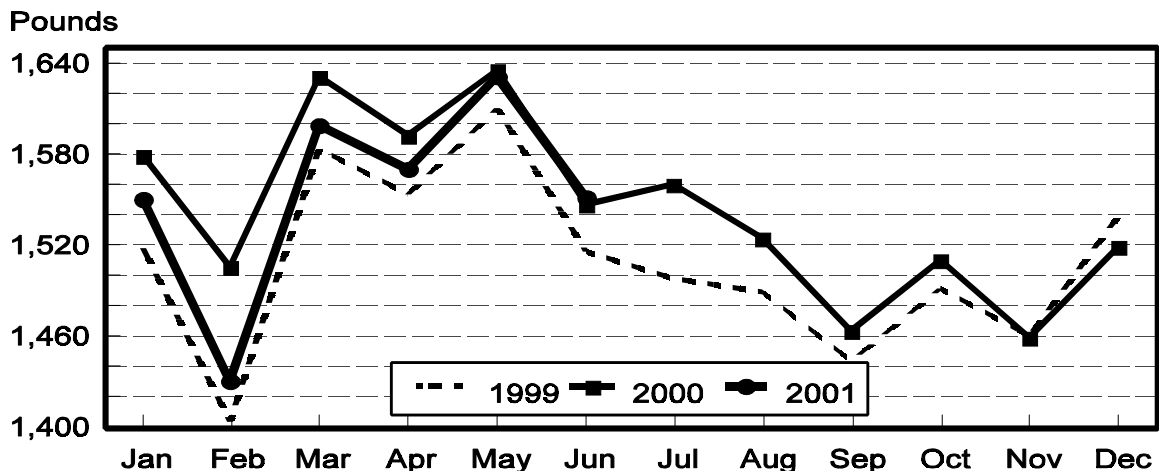
**Production per cow** in the 20 major States averaged 1,552 pounds for June, 5 pounds above June 2000.

**The number of cows** on farms in the 20 major States was 7.75 million head, 61,000 head less than June 2000, but 2,000 head more than May 2001.

## April-June Milk Production Down 1.3 Percent

The quarterly production of milk for the U.S. was 42.6 billion pounds, 1.3 percent below the April-June period last year. The average number of milk cows in the U.S. during the April-June quarter was 9.12 million head, 89,000 head less than the same period last year.

## Monthly Milk per Cow 20 States



**Milk Cows and Production: By Quarter, United States, 2000-2001 <sup>1</sup>**

Quarter	Milk Cows <sup>2</sup>		Milk Per Cow <sup>3</sup>		Milk Production <sup>3</sup>		
	2000	2001	2000	2001	2000	2001	Change From 2000
	<i>1,000 Head</i>	<i>1,000 Head</i>	<i>Pounds</i>	<i>Pounds</i>	<i>Million Pounds</i>	<i>Million Pounds</i>	<i>Percent</i>
Jan-Mar	9,188	9,157	4,640	4,511	42,630	41,306	-3.1
Apr-Jun	9,213	9,124	4,688	4,672	43,189	42,627	-1.3
Jul-Sep	9,229		4,460		41,161		
Oct-Dec	9,211		4,416		40,678		
Annual	9,210		18,204		167,658		

<sup>1</sup> May not add due to rounding.

<sup>2</sup> Includes dry cows, excludes heifers not yet fresh.

<sup>3</sup> Excludes milk sucked by calves.

**Milk Cows and Production: By Month, 20 Selected States, 2000-2001**

Month	Milk Cows <sup>1</sup>		Milk Per Cow <sup>2</sup>		Milk Production <sup>2</sup>		
	2000	2001	2000	2001	2000	2001	Change From 2000
	<i>1,000 Head</i>	<i>1,000 Head</i>	<i>Pounds</i>	<i>Pounds</i>	<i>Million Pounds</i>	<i>Million Pounds</i>	<i>Percent</i>
Jan	7,764	7,783	1,579	1,550	12,259	12,062	-1.6
Feb	7,766	7,767	1,506	1,431	11,694	11,112	-5.0
Mar	7,776	7,756	1,632	1,599	12,687	12,401	-2.3
Apr	7,789	7,744	1,593	1,570	12,411	12,158	-2.0
May	7,799	7,745	1,636	1,632	12,758	12,638	-0.9
Jun	7,808	7,747	1,547	1,552	12,082	12,023	-0.5
Jul	7,821		1,561		12,205		
Aug	7,820		1,525		11,928		
Sep	7,820		1,464		11,451		
Oct	7,817		1,511		11,813		
Nov	7,805		1,459		11,385		
Dec	7,803		1,519		11,855		
Annual	7,799		18,532		144,528		

<sup>1</sup> Includes dry cows, excludes heifers not yet fresh.

<sup>2</sup> Excludes milk sucked by calves.

**Estimated Milk Cows and Production: By Month, United States, 2000-2001 <sup>1</sup>**

Month	Milk Cows <sup>2</sup>		Milk Per Cow <sup>3</sup>		Milk Production <sup>3</sup>		
	2000	2001	2000	2001	2000	2001	Change From 2000
	<i>1,000 Head</i>	<i>1,000 Head</i>	<i>Pounds</i>	<i>Pounds</i>	<i>Million Pounds</i>	<i>Million Pounds</i>	<i>Percent</i>
Jan	9,183	9,174	1,553	1,527	14,263	14,005	-1.8
Feb	9,183	9,155	1,482	1,409	13,606	12,902	-5.2
Mar	9,197	9,141	1,605	1,575	14,761	14,399	-2.5
Apr	9,202	9,123	1,564	1,543	14,390	14,076	-2.2
May	9,214	9,124	1,605	1,604	14,791	14,631	-1.1
Jun	9,224	9,126	1,519	1,525	14,008	13,920	-0.6
Jul	9,229		1,530		14,117		
Aug	9,228		1,495		13,798		
Sep	9,229		1,435		13,246		
Oct	9,222		1,486		13,708		
Nov	9,208		1,435		13,212		
Dec	9,204		1,495		13,758		
Annual	9,210		18,204		167,658		

<sup>1</sup> 2001 revised.

<sup>2</sup> Includes dry cows, excludes heifers not yet fresh.

<sup>3</sup> Excludes milk sucked by calves.

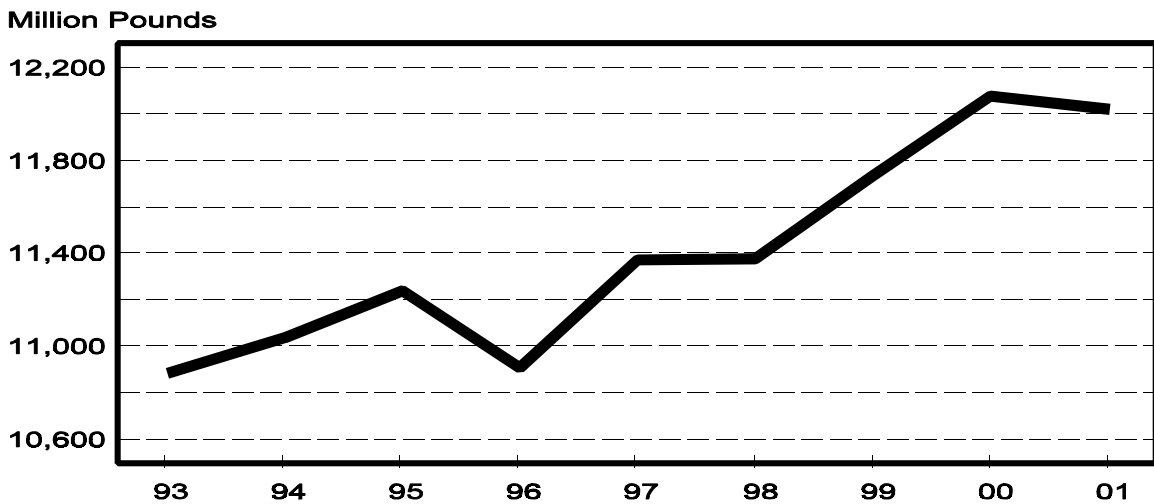
**Milk Cows and Production: By State, June 2000-2001**

State	Milk Cows <sup>1</sup>		Milk Per Cow <sup>2</sup>		Milk Production <sup>2</sup>		
	2000	2001	2000	2001	2000	2001	Change From 2000
	<i>1,000 Head</i>	<i>1,000 Head</i>	<i>Pounds</i>	<i>Pounds</i>	<i>Million Pounds</i>	<i>Million Pounds</i>	<i>Percent</i>
AZ	138	140	1,890	1,720	261	241	-7.7
CA	1,518	1,585	1,760	1,740	2,672	2,758	3.2
FL	158	155	1,325	1,305	209	202	-3.3
ID	351	367	1,760	1,780	618	653	5.7
IL	120	115	1,440	1,480	173	170	-1.7
IN	144	154	1,340	1,470	193	226	17.1
IA	215	210	1,530	1,495	329	314	-4.6
KY	132	130	1,000	1,070	132	139	5.3
MI	304	304	1,595	1,600	485	486	0.2
MN	535	510	1,490	1,480	797	755	-5.3
MO	155	148	1,200	1,140	186	169	-9.1
NM	249	263	1,790	1,790	446	471	5.6
NY	688	673	1,470	1,480	1,011	996	-1.5
OH	262	261	1,400	1,450	367	378	3.0
PA	617	600	1,495	1,520	922	912	-1.1
TX	350	325	1,355	1,315	474	427	-9.9
VT	160	152	1,470	1,480	235	225	-4.3
VA	120	118	1,250	1,270	150	150	0.0
WA	247	247	1,910	1,895	472	468	-0.8
WI	1,345	1,290	1,450	1,460	1,950	1,883	-3.4
20-State Total	7,808	7,747	1,547	1,552	12,082	12,023	-0.5

<sup>1</sup> Includes dry cows, excludes heifers not yet fresh.

<sup>2</sup> Excludes milk sucked by calves.

**June Milk Production, 1993-2001  
20 States**



**Milk Cows and Production: By State, May 2000-2001<sup>1</sup>**

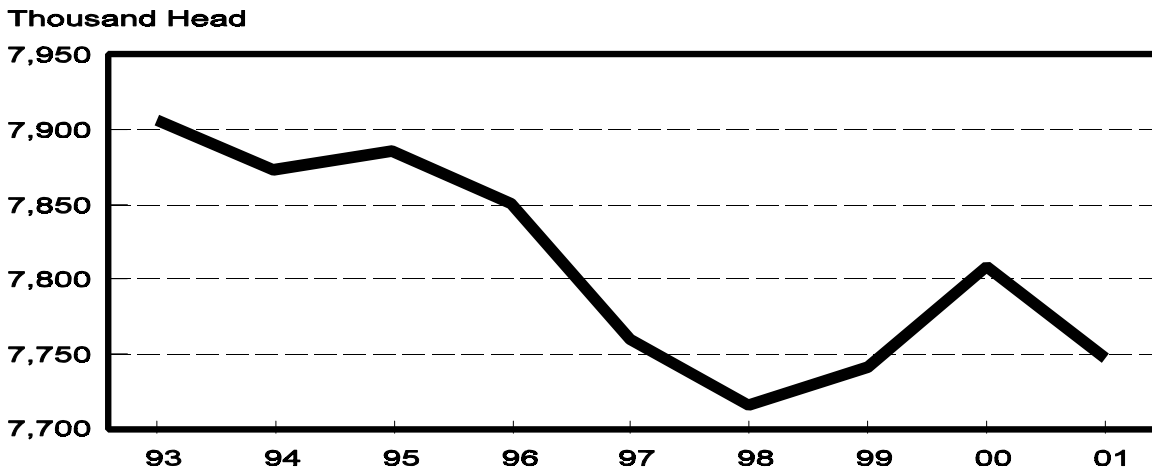
State	Milk Cows <sup>2</sup>		Milk per Cow <sup>3</sup>		Milk Production <sup>3</sup>		
	2000	2001	2000	2001	2000	2001	Change From 2000
	<i>1,000 Head</i>	<i>1,000 Head</i>	<i>Pounds</i>	<i>Pounds</i>	<i>Million Pounds</i>	<i>Million Pounds</i>	<i>Percent</i>
AZ	138	140	2,095	1,850	289	259	-10.4
CA	1,513	1,580	1,850	1,825	2,799	2,884	3.0
FL	158	154	1,460	1,480	231	228	-1.3
ID	344	363	1,800	1,830	619	664	7.3
IL	120	116	1,550	1,610	186	187	0.5
IN	144	153	1,400	1,550	202	237	17.3
IA	215	211	1,610	1,610	346	340	-1.7
KY	133	129	1,120	1,200	149	155	4.0
MI	301	304	1,640	1,675	494	509	3.0
MN	540	515	1,555	1,535	840	791	-5.8
MO	156	148	1,320	1,255	206	186	-9.7
NM	246	261	1,910	1,870	470	488	3.8
NY	690	673	1,530	1,540	1,056	1,036	-1.9
OH	262	261	1,510	1,520	396	397	0.3
PA	615	599	1,615	1,600	993	958	-3.5
TX	350	332	1,540	1,435	539	476	-11.7
VT	160	152	1,530	1,545	245	235	-4.1
VA	120	118	1,400	1,415	168	167	-0.6
WA	247	246	1,980	1,950	489	480	-1.8
WI	1,347	1,290	1,515	1,520	2,041	1,961	-3.9
20-State Total	7,799	7,745	1,636	1,632	12,758	12,638	-0.9

<sup>1</sup> 2001 revised.

<sup>2</sup> Includes dry cows, excludes heifers not yet fresh.

<sup>3</sup> Excludes milk sucked by calves.

**June Milk Cows, 1993-2001  
20 States**



**Milk Cows and Production: By State and United States,  
Revised January-March, 2000-2001**

State	Jan-Mar Milk Cows <sup>1</sup>		Jan-Mar Milk Production <sup>2</sup>		Change From 2000
	2000	2001	2000	2001	
	<i>1,000 Head</i>	<i>1,000 Head</i>	<i>Million Pounds</i>	<i>Million Pounds</i>	<i>Percent</i>
AL	26	22	104	86	-17.3
AK	0.9	1.1	2.95	3.41	15.6
AZ	137	140	819	743	-9.3
AR	42	40	141	120	-14.9
CA	1,496	1,566	8,005	8,090	1.1
CO	87	90	466	483	3.6
CT	27	26	129	120	-7.0
DE	11.0	9.0	47.0	36.5	-22.3
FL	157	155	687	666	-3.1
GA	88	86	402	388	-3.5
HI	8.4	7.7	28.4	26.7	-6.0
ID	333	357	1,683	1,817	8.0
IL	120	117	548	519	-5.3
IN	141	151	588	630	7.1
IA	215	214	1,003	965	-3.8
KS	88	94	385	395	2.6
KY	131	128	451	425	-5.8
LA	60	56	210	184	-12.4
ME	40	38	171	159	-7.0
MD	85	82	357	321	-10.1
MA	24	21	103	91	-11.7
MI	297	302	1,406	1,409	0.2
MN	540	520	2,481	2,322	-6.4
MS	36	36	162	148	-8.6
MO	157	148	599	517	-13.7
MT	18	19	77	84	9.1
NE	75	77	309	295	-4.5
NV	25	25	115	119	3.5
NH	19	18	81	80	-1.2
NJ	16	16	69	68	-1.4
NM	238	261	1,288	1,302	1.1
NY	699	670	3,018	2,848	-5.6
NC	72	68	316	299	-5.4
ND	49	47	173	165	-4.6
OH	260	263	1,145	1,097	-4.2
OK	92	90	331	326	-1.5
OR	90	90	422	396	-6.2
PA	617	603	2,849	2,726	-4.3
RI	1.9	1.5	7.7	6.0	-22.1
SC	23	22	102	101	-1.0
SD	102	100	399	405	1.5
TN	96	94	380	355	-6.6
TX	350	342	1,627	1,389	-14.6
UT	94	93	410	394	-3.9
VT	160	153	705	656	-7.0
VA	120	118	505	482	-4.6
WA	246	247	1,387	1,335	-3.7
WV	17	16	70	61	-12.9
WI	1,355	1,312	5,846	5,637	-3.6
WY	6.0	4.6	19.8	15.2	-23.2
US <sup>3</sup>	9,188	9,157	42,630	41,306	-3.1

<sup>1</sup> Includes dry cows, excludes heifers not yet fresh.

<sup>2</sup> Excludes milk sucked by calves.

<sup>3</sup> May not add due to rounding.

**Milk Cows and Production: By State and United States,  
Preliminary April-June, 2000-2001**

State	Apr-Jun Milk Cows <sup>1</sup>		Apr-Jun Milk Production <sup>2</sup>		Change From 2000
	2000	2001	2000	2001	
	<i>1,000 Head</i>	<i>1,000 Head</i>	<i>Million Pounds</i>	<i>Million Pounds</i>	<i>Percent</i>
AL	25	21	94	80	-14.9
AK	0.9	1.1	3.41	3.62	6.2
AZ	138	140	837	760	-9.2
AR	42	40	141	130	-7.8
CA	1,512	1,580	8,204	8,428	2.7
CO	89	91	488	497	1.8
CT	26	25	122	120	-1.6
DE	10.5	9.0	37.0	37.4	1.1
FL	158	154	672	655	-2.5
GA	88	86	384	386	0.5
HI	8.4	7.5	32.2	29.1	-9.6
ID	345	363	1,817	1,943	6.9
IL	120	116	541	539	-0.4
IN	144	153	594	683	15.0
IA	215	211	1,010	982	-2.8
KS	89	91	370	390	5.4
KY	133	129	436	445	2.1
LA	58	56	188	168	-10.6
ME	40	38	172	164	-4.7
MD	84	82	347	327	-5.8
MA	23	21	102	92	-9.8
MI	301	304	1,460	1,478	1.2
MN	538	513	2,463	2,324	-5.6
MS	36	36	144	139	-3.5
MO	156	148	601	542	-9.8
MT	18	19	80	87	8.8
NE	75	74	315	294	-6.7
NV	25	25	118	124	5.1
NH	18	18	80	81	1.3
NJ	16	16	69	68	-1.4
NM	245	262	1,358	1,418	4.4
NY	691	672	3,082	2,997	-2.8
NC	72	68	303	299	-1.3
ND	49	46	183	172	-6.0
OH	262	261	1,138	1,151	1.1
OK	91	90	331	336	1.5
OR	90	90	430	419	-2.6
PA	616	599	2,893	2,792	-3.5
RI	1.8	1.5	7.5	6.2	-17.3
SC	23	21	98	97	-1.0
SD	103	99	413	414	0.2
TN	95	93	365	355	-2.7
TX	350	332	1,556	1,379	-11.4
UT	96	93	434	413	-4.8
VT	160	152	716	682	-4.7
VA	120	118	487	480	-1.4
WA	247	246	1,439	1,406	-2.3
WV	17	16	67	64	-4.5
WI	1,347	1,292	5,947	5,735	-3.6
WY	5.8	4.4	20.3	15.4	-24.1
US <sup>3</sup>	9,213	9,124	43,189	42,627	-1.3

<sup>1</sup> Includes dry cows, excludes heifers not yet fresh.

<sup>2</sup> Excludes milk sucked by calves.

<sup>3</sup> May not add due to rounding.

## Reliability Statement

**Survey Procedures:** Primary data used to determine these estimates were obtained from a sample of producers. Individual States maintain a list of all known milk producers and information on the size of their herd. States use all known sources of producers to ensure that their lists are as complete as possible. Generally, all large producers and a sample of small producers are included in the survey. Questionnaires are mailed to producers near the end of the month to obtain data for the first day of the month. Additional reports are obtained by telephone, as needed, to supplement the mail response.

**Estimation Procedures:** State offices prepare these estimates using survey indications, historic trends, and any available administrative data. Individual State estimates are reviewed by the Agricultural Statistics Board for reasonableness.

**Revision Policy:** Milk production, rate per cow, and number of cows are subject to revision the following month for monthly States or the following quarter for the quarterly States. Normally, Federal Market Order sales are the main basis for revisions. However, data for all orders are not available in time for this revision. Estimates are again subject to revisions in February each year based on additional administrative data. In the event that additional changes are necessary, a third revision is possible in February the following year. Estimates are again reviewed after data from the five-year Census of Agriculture are available. No revisions are made after that date.

**Reliability:** Since all operations with dairy animals are not included in the sample, survey estimates are subject to sampling variability. Survey results are also subject to non-sampling errors such as omissions, duplications, and mistakes in reporting, recording, and processing the data. The effects of these errors cannot be measured directly. They are minimized through rigid quality controls in the data collection process and through a careful review of all reported data for consistency and reasonableness.

To assist users in evaluating the reliability of the estimates in this report, the "Root Mean Square Error" is shown for selected items on the next page. The "Root Mean Square Error" is a statistical measure based on past performance and is computed using the differences between first and final estimates. The "Root Mean Square Error" for milk cow inventory estimates over the past 10 April-June quarters is 1.1 percent. This means that chances are 2 out of 3 that the final April-June estimate will not be above or below the current estimate of 9.12 million head by more than 1.1 percent. Chances are 9 out of 10 that the difference will not exceed 1.9 percent.

**Reliability of April-June Milk Estimates <sup>1</sup>**

Item	Root Mean Square Error	90% Confidence Level		Difference Between First and Latest Estimates			Quarters	
				Average	Smallest	Largest	First Above Latest	First Below Latest
				<i>Million Pounds</i>	<i>Million Pounds</i>	<i>Million Pounds</i>	<i>Number</i>	<i>Number</i>
Milk Production	<i>Percent</i> 0.4	<i>Percent</i> 0.7	<i>Million Pounds</i> 298	<i>Million Pounds</i> 127	<i>Million Pounds</i> 3	<i>Million Pounds</i> 264	<i>Number</i> 9	<i>Number</i> 1
All Milk Cows	<i>Percent</i> 1.1	<i>Percent</i> 1.9	<i>1,000 Head</i> 173	<i>1,000 Head</i> 73	<i>1,000 Head</i> 0	<i>1,000 Head</i> 188	<i>Number</i> 6	<i>Number</i> 3

<sup>1</sup> Based on records for the past 10 April-June quarters.



The next "Milk Production" report will be released at 3 p.m. ET on August 16, 2001.

The United States Department of Agriculture (USDA) prohibits discrimination in all its programs on the basis of race, color, national origin, gender, religion, age, disability, political beliefs, sexual orientation, and marital or family status. (Not all prohibited bases apply to all programs.) Persons with disabilities who require alternative means for communication of program information (braille, large print, audiotape, etc.) should contact the USDA's TARGET Center at 202-720-2600 (voice and TDD).

To file a complaint of discrimination, write USDA, Director, Office of Civil Rights, Room 326-W, Whitten Building, 1400 Independence Avenue, SW, Washington, D.C., 20250-9410, or call 202-720-5964 (voice or TDD). USDA is an equal opportunity provider and employer.

## **ACCESS TO REPORTS!!**

---

For your convenience, there are several ways to obtain NASS reports, data products, and services:

### **INTERNET ACCESS**

All NASS reports are available free of charge on the worldwide Internet. For access, connect to the Internet and go to the NASS Home Page at: <http://www.usda.gov/nass/>. Select "Today's Reports" or Publications and then Reports by Calendar or Publications and then Search, by Title or Subject.

### **E-MAIL SUBSCRIPTION**

There are two options for subscribing via e-mail. All NASS reports are available by subscription free of charge direct to your e-mail address. 1) Starting with the NASS Home Page at <http://www.usda.gov/nass/>, click on **Publications**, then click on the **Subscribe by E-mail** button which takes you to the page describing e-mail delivery of reports. Finally, click on **Go to the Subscription Page** and follow the instructions. 2) If you do NOT have Internet access, send an e-mail message to: [usda-reports@usda.mannlib.cornell.edu](mailto:usda-reports@usda.mannlib.cornell.edu). In the body of the message type the word: **list**.

### **AUTOFAX ACCESS**

NASSFax service is available for some reports from your fax machine. Please call 202-720-2000, using the handset attached to your fax. Respond to the voice prompts. Document 0411 is a list of available reports.

-----  
**PRINTED REPORTS OR DATA PRODUCTS**

**CALL OUR TOLL-FREE ORDER DESK: 800-999-6779 (U.S. and Canada)**  
**Other areas, please call 703-605-6000      FAX: 703-605-6900**  
**(Visa, MasterCard, check, or money order acceptable for payment.)**  
-----

### **ASSISTANCE**

For **assistance** with general agricultural statistics or further information about NASS or its products or services, contact the **Agricultural Statistics Hotline** at **800-727-9540**, 7:30 a.m. to 4:00 p.m. ET, or e-mail: [nass@nass.usda.gov](mailto:nass@nass.usda.gov).