

Released September 17, 2001, by the National Agricultural Statistics Service (NASS), Agricultural Statistics Board, U.S. Department of Agriculture. For information on "Milk Production" call Ty Kalas at 202-690-3236, office hours 7:00 a.m. to 4:30 p.m. ET.

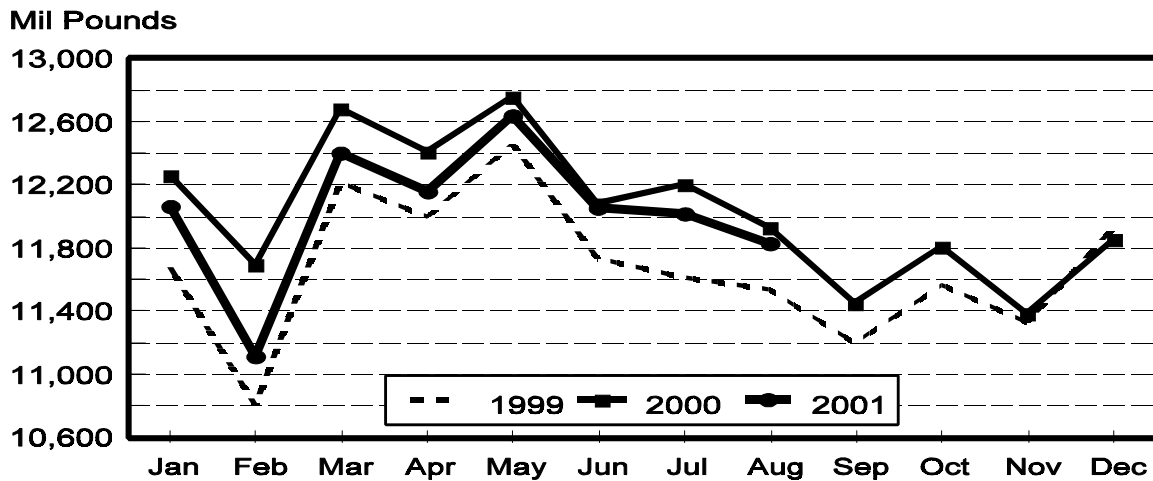
## August Milk Production Down 0.8 Percent

**Milk production** in the 20 major States during August totaled 11.8 billion pounds, down 0.8 percent from August 2000. July revised production, at 12.0 billion pounds, was down 1.5 percent from July 2000. The July revision represented a decrease of 0.3 percent or 33 million pounds from last month's preliminary production estimate.

**Production per cow** in the 20 major States averaged 1,529 pounds for August, 4 pounds above August 2000.

**The number of milk cows** on farms in the 20 major States was 7.74 million head, 82,000 head less than August 2000, and 7,000 head less than July 2001.

## Monthly Milk Production 20 States



**Milk Cows and Production: By Quarter, United States, 2000-2001 <sup>1</sup>**

| Quarter | Milk Cows <sup>2</sup> |                   | Milk Per Cow <sup>3</sup> |               | Milk Production <sup>3</sup> |                       |                  |
|---------|------------------------|-------------------|---------------------------|---------------|------------------------------|-----------------------|------------------|
|         | 2000                   | 2001              | 2000                      | 2001          | 2000                         | 2001                  | Change From 2000 |
|         | <i>1,000 Head</i>      | <i>1,000 Head</i> | <i>Pounds</i>             | <i>Pounds</i> | <i>Million Pounds</i>        | <i>Million Pounds</i> | <i>Percent</i>   |
| Jan-Mar | 9,188                  | 9,157             | 4,640                     | 4,511         | 42,630                       | 41,306                | -3.1             |
| Apr-Jun | 9,213                  | 9,126             | 4,688                     | 4,675         | 43,189                       | 42,661                | -1.2             |
| Jul-Sep | 9,229                  |                   | 4,460                     |               | 41,161                       |                       |                  |
| Oct-Dec | 9,211                  |                   | 4,416                     |               | 40,678                       |                       |                  |
| Annual  | 9,210                  |                   | 18,204                    |               | 167,658                      |                       |                  |

<sup>1</sup> May not add due to rounding.

<sup>2</sup> Includes dry cows, excludes heifers not yet fresh.

<sup>3</sup> Excludes milk sucked by calves.

**Milk Cows and Production: By Month, 20 Selected States, 2000-2001**

| Month  | Milk Cows <sup>1</sup> |                   | Milk Per Cow <sup>2</sup> |               | Milk Production <sup>2</sup> |                       |                  |
|--------|------------------------|-------------------|---------------------------|---------------|------------------------------|-----------------------|------------------|
|        | 2000                   | 2001              | 2000                      | 2001          | 2000                         | 2001                  | Change From 2000 |
|        | <i>1,000 Head</i>      | <i>1,000 Head</i> | <i>Pounds</i>             | <i>Pounds</i> | <i>Million Pounds</i>        | <i>Million Pounds</i> | <i>Percent</i>   |
| Jan    | 7,764                  | 7,783             | 1,579                     | 1,550         | 12,259                       | 12,062                | -1.6             |
| Feb    | 7,766                  | 7,767             | 1,506                     | 1,431         | 11,694                       | 11,112                | -5.0             |
| Mar    | 7,776                  | 7,756             | 1,632                     | 1,599         | 12,687                       | 12,401                | -2.3             |
| Apr    | 7,789                  | 7,744             | 1,593                     | 1,570         | 12,411                       | 12,158                | -2.0             |
| May    | 7,799                  | 7,745             | 1,636                     | 1,632         | 12,758                       | 12,638                | -0.9             |
| Jun    | 7,808                  | 7,749             | 1,547                     | 1,556         | 12,082                       | 12,057                | -0.2             |
| Jul    | 7,821                  | 7,745             | 1,561                     | 1,552         | 12,205                       | 12,020                | -1.5             |
| Aug    | 7,820                  | 7,738             | 1,525                     | 1,529         | 11,928                       | 11,828                | -0.8             |
| Sep    | 7,820                  |                   | 1,464                     |               | 11,451                       |                       |                  |
| Oct    | 7,817                  |                   | 1,511                     |               | 11,813                       |                       |                  |
| Nov    | 7,805                  |                   | 1,459                     |               | 11,385                       |                       |                  |
| Dec    | 7,803                  |                   | 1,519                     |               | 11,855                       |                       |                  |
| Annual | 7,799                  |                   | 18,532                    |               | 144,528                      |                       |                  |

<sup>1</sup> Includes dry cows, excludes heifers not yet fresh.

<sup>2</sup> Excludes milk sucked by calves.

**Estimated Milk Cows and Production: By Month, United States, 2000-2001 <sup>1</sup>**

| Month  | Milk Cows <sup>2</sup> |                   | Milk Per Cow <sup>3</sup> |               | Milk Production <sup>3</sup> |                       |                  |
|--------|------------------------|-------------------|---------------------------|---------------|------------------------------|-----------------------|------------------|
|        | 2000                   | 2001              | 2000                      | 2001          | 2000                         | 2001                  | Change From 2000 |
|        | <i>1,000 Head</i>      | <i>1,000 Head</i> | <i>Pounds</i>             | <i>Pounds</i> | <i>Million Pounds</i>        | <i>Million Pounds</i> | <i>Percent</i>   |
| Jan    | 9,183                  | 9,174             | 1,553                     | 1,527         | 14,263                       | 14,005                | -1.8             |
| Feb    | 9,183                  | 9,155             | 1,482                     | 1,409         | 13,606                       | 12,902                | -5.2             |
| Mar    | 9,197                  | 9,141             | 1,605                     | 1,575         | 14,761                       | 14,399                | -2.5             |
| Apr    | 9,202                  | 9,123             | 1,564                     | 1,543         | 14,390                       | 14,076                | -2.2             |
| May    | 9,214                  | 9,124             | 1,605                     | 1,604         | 14,791                       | 14,631                | -1.1             |
| Jun    | 9,224                  | 9,130             | 1,519                     | 1,528         | 14,008                       | 13,954                | -0.4             |
| Jul    | 9,229                  | 9,125             | 1,530                     | 1,524         | 14,117                       | 13,904                | -1.5             |
| Aug    | 9,228                  | 9,116             | 1,495                     | 1,501         | 13,798                       | 13,682                | -0.8             |
| Sep    | 9,229                  |                   | 1,435                     |               | 13,246                       |                       |                  |
| Oct    | 9,222                  |                   | 1,486                     |               | 13,708                       |                       |                  |
| Nov    | 9,208                  |                   | 1,435                     |               | 13,212                       |                       |                  |
| Dec    | 9,204                  |                   | 1,495                     |               | 13,758                       |                       |                  |
| Annual | 9,210                  |                   | 18,204                    |               | 167,658                      |                       |                  |

<sup>1</sup> 2001 revised.

<sup>2</sup> Includes dry cows, excludes heifers not yet fresh.

<sup>3</sup> Excludes milk sucked by calves.

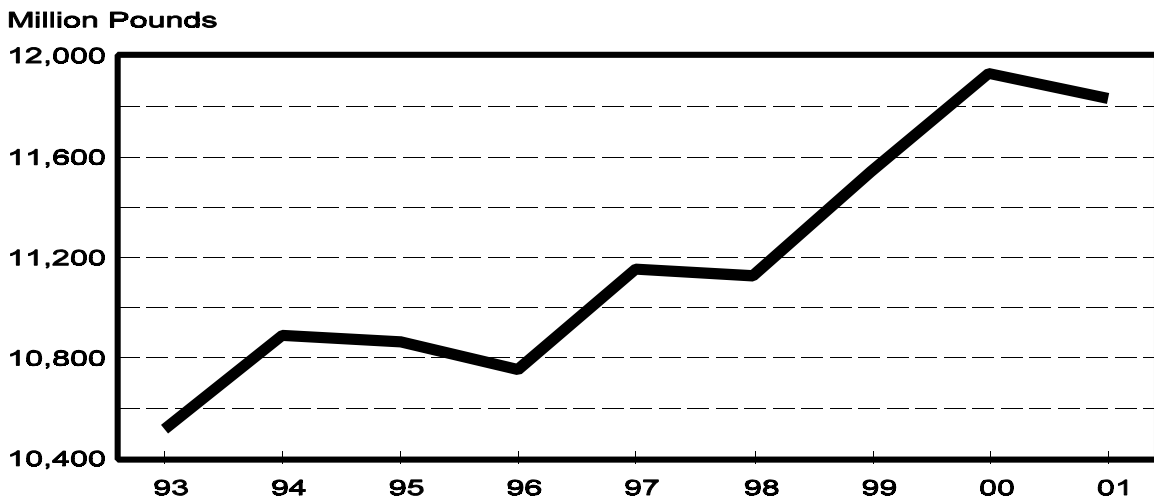
**Milk Cows and Production: By State, August 2000-2001**

| State          | Milk Cows <sup>1</sup> |                   | Milk Per Cow <sup>2</sup> |               | Milk Production <sup>2</sup> |                       |                  |
|----------------|------------------------|-------------------|---------------------------|---------------|------------------------------|-----------------------|------------------|
|                | 2000                   | 2001              | 2000                      | 2001          | 2000                         | 2001                  | Change From 2000 |
|                | <i>1,000 Head</i>      | <i>1,000 Head</i> | <i>Pounds</i>             | <i>Pounds</i> | <i>Million Pounds</i>        | <i>Million Pounds</i> | <i>Percent</i>   |
| AZ             | 140                    | 140               | 1,555                     | 1,520         | 218                          | 213                   | -2.3             |
| CA             | 1,533                  | 1,595             | 1,750                     | 1,765         | 2,683                        | 2,815                 | 4.9              |
| FL             | 156                    | 153               | 1,120                     | 1,150         | 175                          | 176                   | 0.6              |
| ID             | 355                    | 372               | 1,790                     | 1,830         | 635                          | 681                   | 7.2              |
| IL             | 120                    | 115               | 1,400                     | 1,370         | 168                          | 158                   | -6.0             |
| IN             | 147                    | 154               | 1,327                     | 1,340         | 195                          | 206                   | 5.6              |
| IA             | 215                    | 207               | 1,510                     | 1,475         | 325                          | 305                   | -6.2             |
| KY             | 132                    | 128               | 1,015                     | 1,045         | 134                          | 134                   |                  |
| MI             | 302                    | 302               | 1,605                     | 1,590         | 485                          | 480                   | -1.0             |
| MN             | 530                    | 510               | 1,435                     | 1,400         | 761                          | 714                   | -6.2             |
| MO             | 153                    | 144               | 1,130                     | 1,025         | 173                          | 148                   | -14.5            |
| NM             | 255                    | 268               | 1,730                     | 1,770         | 441                          | 474                   | 7.5              |
| NY             | 682                    | 673               | 1,480                     | 1,510         | 1,009                        | 1,016                 | 0.7              |
| OH             | 263                    | 258               | 1,390                     | 1,400         | 366                          | 361                   | -1.4             |
| PA             | 619                    | 598               | 1,485                     | 1,480         | 919                          | 885                   | -3.7             |
| TX             | 348                    | 322               | 1,185                     | 1,140         | 412                          | 367                   | -10.9            |
| VT             | 160                    | 152               | 1,455                     | 1,480         | 233                          | 225                   | -3.4             |
| VA             | 120                    | 118               | 1,250                     | 1,270         | 150                          | 150                   |                  |
| WA             | 247                    | 247               | 1,940                     | 1,945         | 479                          | 480                   | 0.2              |
| WI             | 1,343                  | 1,282             | 1,465                     | 1,435         | 1,967                        | 1,840                 | -6.5             |
| 20-State Total | 7,820                  | 7,738             | 1,525                     | 1,529         | 11,928                       | 11,828                | -0.8             |

<sup>1</sup> Includes dry cows, excludes heifers not yet fresh.

<sup>2</sup> Excludes milk sucked by calves.

**August Milk Production, 1993-2001  
20 States**



**Milk Cows and Production: By State, July 2000-2001<sup>1</sup>**

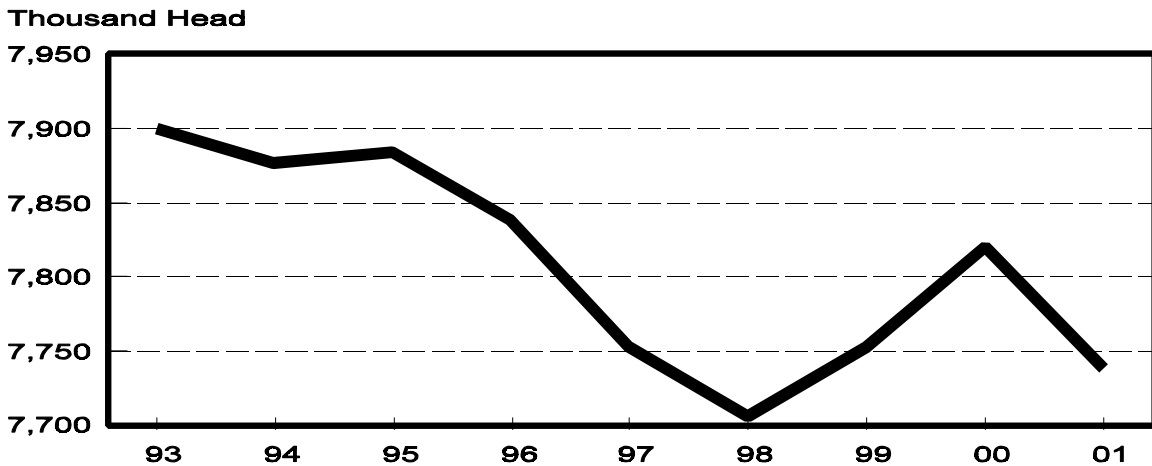
| State          | Milk Cows <sup>2</sup> |                   | Milk per Cow <sup>3</sup> |               | Milk Production <sup>3</sup> |                       |                  |
|----------------|------------------------|-------------------|---------------------------|---------------|------------------------------|-----------------------|------------------|
|                | 2000                   | 2001              | 2000                      | 2001          | 2000                         | 2001                  | Change From 2000 |
|                | <i>1,000 Head</i>      | <i>1,000 Head</i> | <i>Pounds</i>             | <i>Pounds</i> | <i>Million Pounds</i>        | <i>Million Pounds</i> | <i>Percent</i>   |
| AZ             | 140                    | 140               | 1,735                     | 1,740         | 243                          | 244                   | 0.4              |
| CA             | 1,525                  | 1,590             | 1,825                     | 1,770         | 2,783                        | 2,814                 | 1.1              |
| FL             | 157                    | 154               | 1,210                     | 1,225         | 190                          | 189                   | -0.5             |
| ID             | 355                    | 370               | 1,820                     | 1,840         | 646                          | 681                   | 5.4              |
| IL             | 120                    | 115               | 1,430                     | 1,405         | 172                          | 162                   | -5.8             |
| IN             | 145                    | 154               | 1,364                     | 1,405         | 198                          | 216                   | 9.1              |
| IA             | 215                    | 209               | 1,540                     | 1,475         | 331                          | 308                   | -6.9             |
| KY             | 133                    | 129               | 1,015                     | 1,045         | 135                          | 135                   |                  |
| MI             | 302                    | 303               | 1,620                     | 1,615         | 489                          | 489                   |                  |
| MN             | 535                    | 510               | 1,455                     | 1,425         | 778                          | 727                   | -6.6             |
| MO             | 154                    | 146               | 1,210                     | 1,055         | 186                          | 154                   | -17.2            |
| NM             | 252                    | 265               | 1,730                     | 1,790         | 436                          | 474                   | 8.7              |
| NY             | 685                    | 673               | 1,490                     | 1,520         | 1,021                        | 1,023                 | 0.2              |
| OH             | 263                    | 258               | 1,420                     | 1,420         | 373                          | 366                   | -1.9             |
| PA             | 619                    | 600               | 1,500                     | 1,510         | 929                          | 906                   | -2.5             |
| TX             | 349                    | 324               | 1,235                     | 1,205         | 431                          | 390                   | -9.5             |
| VT             | 160                    | 152               | 1,475                     | 1,510         | 236                          | 230                   | -2.5             |
| VA             | 120                    | 118               | 1,265                     | 1,305         | 152                          | 154                   | 1.3              |
| WA             | 247                    | 247               | 1,965                     | 1,960         | 485                          | 484                   | -0.2             |
| WI             | 1,345                  | 1,288             | 1,480                     | 1,455         | 1,991                        | 1,874                 | -5.9             |
| 20-State Total | 7,821                  | 7,745             | 1,561                     | 1,552         | 12,205                       | 12,020                | -1.5             |

<sup>1</sup> 2001 revised.

<sup>2</sup> Includes dry cows, excludes heifers not yet fresh.

<sup>3</sup> Excludes milk sucked by calves.

**August Milk Cows, 1993-2001  
20 States**



## Reliability Statement

**Survey Procedures:** Primary data used to determine these estimates were obtained from a sample of producers. Individual States maintain a list of all known milk producers and information on the size of their herd. States use all known sources of producers to ensure that their lists are as complete as possible. Generally, all large producers and a sample of small producers are included in the survey. Questionnaires are mailed to producers near the end of the month to obtain data for the first day of the month. Additional reports are obtained by telephone, as needed, to supplement the mail response.

**Estimation Procedures:** State offices prepare these estimates using survey indications, historic trends, and any available administrative data. Individual State estimates are reviewed by the Agricultural Statistics Board for reasonableness.

**Revision Policy:** Milk production, rate per cow, and number of cows are subject to revision the following month for monthly States or the following quarter for the quarterly States. Normally, Federal Market Order sales are the main basis for revisions. However, data for all orders are not available in time for this revision. Estimates are again subject to revisions in February each year based on additional administrative data. In the event that additional changes are necessary, a third revision is possible in February the following year. Estimates are again reviewed after data from the five-year Census of Agriculture are available. No revisions are made after that date.

**Reliability:** Since all operations with dairy animals are not included in the sample, survey estimates are subject to sampling variability. Survey results are also subject to non-sampling errors such as omissions, duplications, and mistakes in reporting, recording, and processing the data. The effects of these errors cannot be measured directly. They are minimized through rigid quality controls in the data collection process and through a careful review of all reported data for consistency and reasonableness.

To assist users in evaluating the reliability of the estimates in this report, the "Root Mean Square Error" is shown for selected items on the next page. The "Root Mean Square Error" is a statistical measure based on past performance and is computed using the differences between first and final estimates. The "Root Mean Square Error" for milk cow inventory estimates over the past 10 April-June quarters is 1.1 percent. This means that chances are 2 out of 3 that the final April-June estimate will not be above or below the current estimate of 9.13 million head by more than 1.1 percent. Chances are 9 out of 10 that the difference will not exceed 1.9 percent.

**Reliability of April-June Milk Estimates <sup>1</sup>**

| Item            | Root Mean Square Error | 90% Confidence Level  |                              | Difference Between First and Latest Estimates |                            |                              | Quarters           |                    |
|-----------------|------------------------|-----------------------|------------------------------|---|----------------------------|------------------------------|--------------------|--------------------|
|                 |                        |                       |                              | Average                                       | Smallest                   | Largest                      | First Above Latest | First Below Latest |
|                 |                        |                       |                              | <i>Million Pounds</i>                         | <i>Million Pounds</i>      | <i>Million Pounds</i>        | <i>Number</i>      | <i>Number</i>      |
| Milk Production | <i>Percent</i><br>0.4  | <i>Percent</i><br>0.7 | <i>Million Pounds</i><br>299 | <i>Million Pounds</i><br>127                  | <i>Million Pounds</i><br>3 | <i>Million Pounds</i><br>264 | <i>Number</i><br>9 | <i>Number</i><br>1 |
| All Milk Cows   | <i>Percent</i><br>1.1  | <i>Percent</i><br>1.9 | <i>1,000 Head</i><br>173     | <i>1,000 Head</i><br>73                       | <i>1,000 Head</i><br>0     | <i>1,000 Head</i><br>188     | <i>Number</i><br>6 | <i>Number</i><br>3 |

<sup>1</sup> Based on records for the past 10 April-June quarters.

The next "Milk Production" report will be released at 3 p.m. ET on October 16, 2001.

The United States Department of Agriculture (USDA) prohibits discrimination in all its programs on the basis of race, color, national origin, gender, religion, age, disability, political beliefs, sexual orientation, and marital or family status. (Not all prohibited bases apply to all programs.) Persons with disabilities who require alternative means for communication of program information (braille, large print, audiotape, etc.) should contact the USDA's TARGET Center at 202-720-2600 (voice and TDD).

To file a complaint of discrimination, write USDA, Director, Office of Civil Rights, Room 326-W, Whitten Building, 1400 Independence Avenue, SW, Washington, D.C., 20250-9410, or call 202-720-5964 (voice or TDD). USDA is an equal opportunity provider and employer.

## **ACCESS TO REPORTS!!**

---

For your convenience, there are several ways to obtain NASS reports, data products, and services:

### **INTERNET ACCESS**

All NASS reports are available free of charge on the worldwide Internet. For access, connect to the Internet and go to the NASS Home Page at: <http://www.usda.gov/nass/>. Select "Today's Reports" or Publications and then Reports by Calendar or Publications and then Search, by Title or Subject.

### **E-MAIL SUBSCRIPTION**

There are two options for subscribing via e-mail. All NASS reports are available by subscription free of charge direct to your e-mail address. 1) Starting with the NASS Home Page at <http://www.usda.gov/nass/>, click on **Publications**, then click on the **Subscribe by E-mail** button which takes you to the page describing e-mail delivery of reports. Finally, click on **Go to the Subscription Page** and follow the instructions. 2) If you do NOT have Internet access, send an e-mail message to: [usda-reports@usda.mannlib.cornell.edu](mailto:usda-reports@usda.mannlib.cornell.edu). In the body of the message type the word: **list**.

### **AUTOFAX ACCESS**

NASSFax service is available for some reports from your fax machine. Please call 202-720-2000, using the handset attached to your fax. Respond to the voice prompts. Document 0411 is a list of available reports.

-----  
**PRINTED REPORTS OR DATA PRODUCTS**

**CALL OUR TOLL-FREE ORDER DESK: 800-999-6779 (U.S. and Canada)**  
**Other areas, please call 703-605-6220      FAX: 703-605-6900**  
**(Visa, MasterCard, check, or money order acceptable for payment.)**  
-----

### **ASSISTANCE**

For **assistance** with general agricultural statistics or further information about NASS or its products or services, contact the **Agricultural Statistics Hotline** at **800-727-9540**, 7:30 a.m. to 4:00 p.m. ET, or e-mail: [nass@nass.usda.gov](mailto:nass@nass.usda.gov).

USDA to Hold Public Forum  
October 15, 2001

Holiday Inn Mart Plaza  
Chicago, Illinois

The National Agricultural Statistics Service will be organizing an open forum for data users. The purpose will be to provide updates on pending changes in the various statistical and information programs and to seek comments and input from data users. The other USDA agencies to be represented will include the Agricultural Marketing Service, the Economic Research Service, the Foreign Agricultural Service, and the World Agricultural Outlook Board. The Foreign Trade Division from the Census Bureau and the National Weather Service will also be included in the meeting.

For registration details for the Data User's meeting, see the NASS home page at <http://www.usda.gov/nass/> Or contact Karlyn McCutcheon (NASS) at (202) 690-8141 or at [karlyn\\_mccutcheon@nass.usda.gov](mailto:karlyn_mccutcheon@nass.usda.gov).

This Public Forum precedes an Industry Outlook meeting that will be held at the same location on October 16, 2001. The outlook meeting brings together analysts from the various commodity sectors to discuss the outlook situation. For more information about the outlook meeting and to register for it contact Terry Francl at (847) 685-8769 or at [terry@fb.org](mailto:terry@fb.org).