

Released October 16, 2001, by the National Agricultural Statistics Service (NASS), Agricultural Statistics Board, U.S. Department of Agriculture. For information on "Milk Production" call Ty Kalas at 202-690-3236, office hours 7:00 a.m. to 4:30 p.m. ET.

## September Milk Production Down 0.7 Percent

**Milk production** in the 20 major States during September totaled 11.4 billion pounds, down 0.7 percent from September 2000. August revised production, at 11.8 billion pounds, was down 1.3 percent from August 2000. The August revision represented a decrease of 0.5 percent or 56 million pounds from last month's preliminary production estimate.

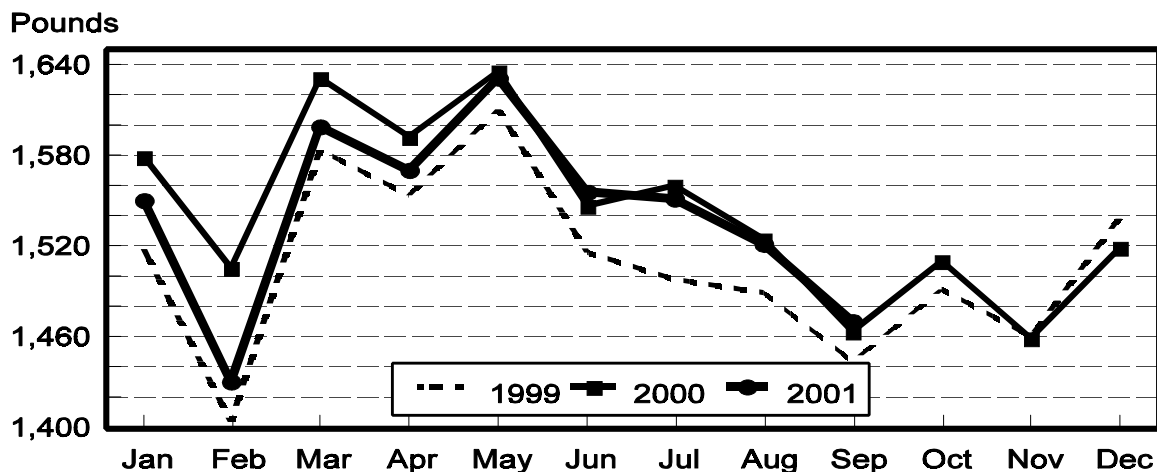
**Production per cow** in the 20 major States averaged 1,471 pounds for September, 7 pounds above September 2000.

**The number of cows** on farms in the 20 major States was 7.73 million head, 91,000 head less than September 2000, and 8,000 head less than August 2001.

## July-September Milk Production Down 1.3 Percent

The quarterly production of milk for the U.S. was 40.6 billion pounds, 1.3 percent below the July-September period last year. The average number of milk cows in the U.S. during the July-September quarter was 9.10 million head, 128,000 head less than the same period last year.

## Monthly Milk per Cow 20 States



**Milk Cows and Production: By Quarter, United States, 2000-2001 <sup>1</sup>**

Quarter	Milk Cows <sup>2</sup>		Milk Per Cow <sup>3</sup>		Milk Production <sup>3</sup>		
	2000	2001	2000	2001	2000	2001	Change From 2000
	<i>1,000 Head</i>	<i>1,000 Head</i>	<i>Pounds</i>	<i>Pounds</i>	<i>Million Pounds</i>	<i>Million Pounds</i>	<i>Percent</i>
Jan-Mar	9,188	9,157	4,640	4,511	42,630	41,306	-3.1
Apr-Jun	9,213	9,125	4,688	4,676	43,189	42,669	-1.2
Jul-Sep	9,229	9,101	4,460	4,463	41,161	40,619	-1.3
Oct-Dec	9,211		4,416		40,678		
Annual	9,210		18,204		167,658		

<sup>1</sup> May not add due to rounding.

<sup>2</sup> Includes dry cows, excludes heifers not yet fresh.

<sup>3</sup> Excludes milk sucked by calves.

**Milk Cows and Production: By Month, 20 Selected States, 2000-2001**

Month	Milk Cows <sup>1</sup>		Milk Per Cow <sup>2</sup>		Milk Production <sup>2</sup>		
	2000	2001	2000	2001	2000	2001	Change From 2000
	<i>1,000 Head</i>	<i>1,000 Head</i>	<i>Pounds</i>	<i>Pounds</i>	<i>Million Pounds</i>	<i>Million Pounds</i>	<i>Percent</i>
Jan	7,764	7,783	1,579	1,550	12,259	12,062	-1.6
Feb	7,766	7,767	1,506	1,431	11,694	11,112	-5.0
Mar	7,776	7,756	1,632	1,599	12,687	12,401	-2.3
Apr	7,789	7,744	1,593	1,570	12,411	12,158	-2.0
May	7,799	7,745	1,636	1,632	12,758	12,638	-0.9
Jun	7,808	7,749	1,547	1,556	12,082	12,057	-0.2
Jul	7,821	7,745	1,561	1,552	12,205	12,020	-1.5
Aug	7,820	7,737	1,525	1,522	11,928	11,772	-1.3
Sep	7,820	7,729	1,464	1,471	11,451	11,372	-0.7
Oct	7,817		1,511		11,813		
Nov	7,805		1,459		11,385		
Dec	7,803		1,519		11,855		
Annual	7,799		18,532		144,528		

<sup>1</sup> Includes dry cows, excludes heifers not yet fresh.

<sup>2</sup> Excludes milk sucked by calves.

**Estimated Milk Cows and Production: By Month, United States, 2000-2001 <sup>1</sup>**

Month	Milk Cows <sup>2</sup>		Milk Per Cow <sup>3</sup>		Milk Production <sup>3</sup>		
	2000	2001	2000	2001	2000	2001	Change From 2000
	<i>1,000 Head</i>	<i>1,000 Head</i>	<i>Pounds</i>	<i>Pounds</i>	<i>Million Pounds</i>	<i>Million Pounds</i>	<i>Percent</i>
Jan	9,183	9,174	1,553	1,527	14,263	14,005	-1.8
Feb	9,183	9,155	1,482	1,409	13,606	12,902	-5.2
Mar	9,197	9,141	1,605	1,575	14,761	14,399	-2.5
Apr	9,202	9,123	1,564	1,543	14,390	14,077	-2.2
May	9,214	9,124	1,605	1,604	14,791	14,632	-1.1
Jun	9,224	9,128	1,519	1,529	14,008	13,960	-0.3
Jul	9,229	9,118	1,530	1,523	14,117	13,885	-1.6
Aug	9,228	9,101	1,495	1,494	13,798	13,598	-1.4
Sep	9,229	9,085	1,435	1,446	13,246	13,136	-0.8
Oct	9,222		1,486		13,708		
Nov	9,208		1,435		13,212		
Dec	9,204		1,495		13,758		
Annual	9,210		18,204		167,658		

<sup>1</sup> 2001 revised.

<sup>2</sup> Includes dry cows, excludes heifers not yet fresh.

<sup>3</sup> Excludes milk sucked by calves.

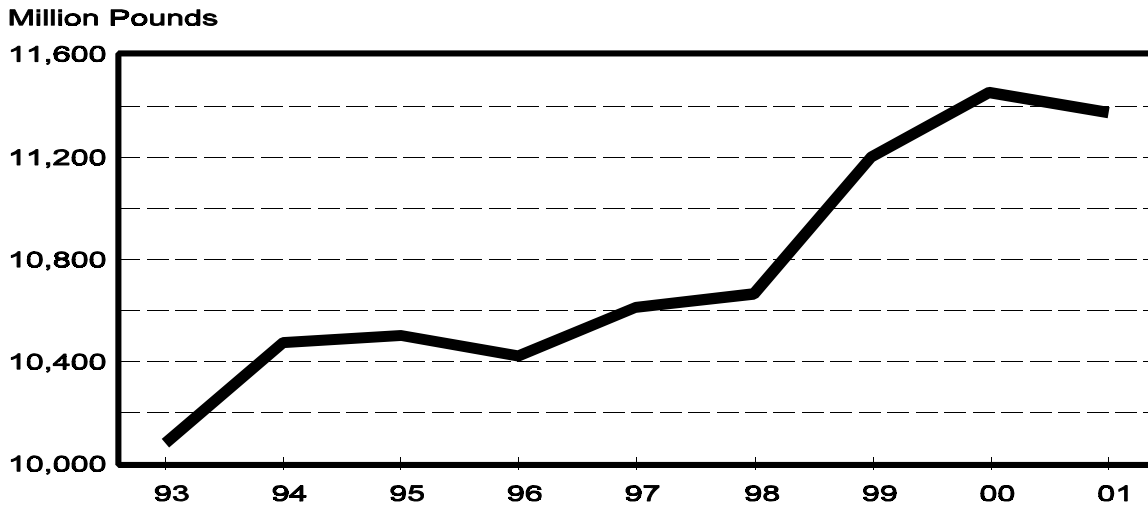
**Milk Cows and Production: By State, September 2000-2001**

State	Milk Cows <sup>1</sup>		Milk Per Cow <sup>2</sup>		Milk Production <sup>2</sup>		Change From 2000
	2000	2001	2000	2001	2000	2001	
	<i>1,000 Head</i>	<i>1,000 Head</i>	<i>Pounds</i>	<i>Pounds</i>	<i>Million Pounds</i>	<i>Million Pounds</i>	<i>Percent</i>
AZ	140	140	1,520	1,545	213	216	1.4
CA	1,540	1,601	1,685	1,700	2,595	2,722	4.9
FL	157	152	1,070	1,105	168	168	
ID	356	372	1,720	1,770	612	658	7.5
IL	120	115	1,350	1,345	162	155	-4.3
IN	148	154	1,275	1,320	189	203	7.4
IA	215	206	1,450	1,430	312	295	-5.4
KY	132	127	980	985	129	125	-3.1
MI	300	301	1,515	1,520	455	458	0.7
MN	530	510	1,380	1,360	731	694	-5.1
MO	153	142	1,080	1,020	165	145	-12.1
NM	258	270	1,645	1,700	424	459	8.3
NY	678	670	1,410	1,410	956	945	-1.2
OH	264	257	1,360	1,370	359	352	-1.9
PA	619	596	1,420	1,450	879	864	-1.7
TX	346	319	1,145	1,115	396	356	-10.1
VT	159	152	1,410	1,435	224	218	-2.7
VA	119	118	1,220	1,220	145	144	-0.7
WA	247	247	1,845	1,840	456	454	-0.4
WI	1,339	1,280	1,405	1,360	1,881	1,741	-7.4
20-State Total	7,820	7,729	1,464	1,471	11,451	11,372	-0.7

<sup>1</sup> Includes dry cows, excludes heifers not yet fresh.

<sup>2</sup> Excludes milk sucked by calves.

**September Milk Production, 1993-2001  
20 States**



**Milk Cows and Production: By State, August 2000-2001<sup>1</sup>**

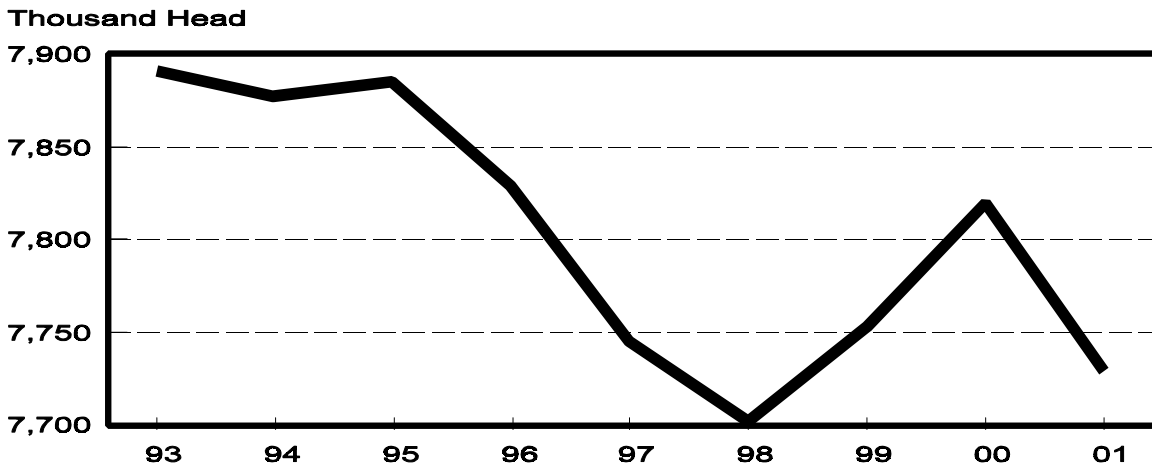
State	Milk Cows <sup>2</sup>		Milk per Cow <sup>3</sup>		Milk Production <sup>3</sup>		
	2000	2001	2000	2001	2000	2001	Change From 2000
	<i>1,000 Head</i>	<i>1,000 Head</i>	<i>Pounds</i>	<i>Pounds</i>	<i>Million Pounds</i>	<i>Million Pounds</i>	<i>Percent</i>
AZ	140	140	1,555	1,520	218	213	-2.3
CA	1,533	1,595	1,750	1,765	2,683	2,815	4.9
FL	156	153	1,120	1,150	175	176	0.6
ID	355	372	1,790	1,830	635	681	7.2
IL	120	115	1,400	1,370	168	158	-6.0
IN	147	154	1,327	1,340	195	206	5.6
IA	215	207	1,510	1,475	325	305	-6.2
KY	132	128	1,015	1,000	134	128	-4.5
MI	302	302	1,605	1,590	485	480	-1.0
MN	530	510	1,435	1,400	761	714	-6.2
MO	153	144	1,130	1,025	173	148	-14.5
NM	255	268	1,730	1,770	441	474	7.5
NY	682	672	1,480	1,480	1,009	995	-1.4
OH	263	258	1,390	1,400	366	361	-1.4
PA	619	598	1,485	1,480	919	885	-3.7
TX	348	322	1,185	1,140	412	367	-10.9
VT	160	152	1,455	1,470	233	223	-4.3
VA	120	118	1,250	1,260	150	149	-0.7
WA	247	247	1,940	1,945	479	480	0.2
WI	1,343	1,282	1,465	1,415	1,967	1,814	-7.8
20-State Total	7,820	7,737	1,525	1,522	11,928	11,772	-1.3

<sup>1</sup> 2001 revised.

<sup>2</sup> Includes dry cows, excludes heifers not yet fresh.

<sup>3</sup> Excludes milk sucked by calves.

**September Milk Cows, 1993-2001  
20 States**



**Milk Cows and Production: By State and United States,  
Revised April-June, 2000-2001**

State	Apr-Jun Milk Cows <sup>1</sup>		Apr-Jun Milk Production <sup>2</sup>		Change From 2000
	2000	2001	2000	2001	
	<i>1,000 Head</i>	<i>1,000 Head</i>	<i>Million Pounds</i>	<i>Million Pounds</i>	<i>Percent</i>
AL	25	21	94	80	-14.9
AK	0.9	1.1	3.41	3.62	6.2
AZ	138	140	837	760	-9.2
AR	42	40	141	126	-10.6
CA	1,512	1,580	8,204	8,452	3.0
CO	89	91	488	497	1.8
CT	26	25	122	119	-2.5
DE	10.5	9.0	37.0	37.4	1.1
FL	158	154	672	654	-2.7
GA	88	86	384	386	0.5
HI	8.4	7.5	32.2	29.1	-9.6
ID	345	365	1,817	1,950	7.3
IL	120	116	541	539	-0.4
IN	144	153	594	683	15.0
IA	215	211	1,010	982	-2.8
KS	89	91	370	390	5.4
KY	133	129	436	446	2.3
LA	58	56	188	168	-10.6
ME	40	38	172	167	-2.9
MD	84	82	347	327	-5.8
MA	23	21	102	94	-7.8
MI	301	304	1,460	1,478	1.2
MN	538	513	2,463	2,324	-5.6
MS	36	36	144	139	-3.5
MO	156	148	601	542	-9.8
MT	18	19	80	87	8.8
NE	75	74	315	298	-5.4
NV	25	25	118	124	5.1
NH	18	18	80	83	3.8
NJ	16	15	69	64	-7.2
NM	245	262	1,358	1,418	4.4
NY	691	672	3,082	3,004	-2.5
NC	72	68	303	299	-1.3
ND	49	46	183	172	-6.0
OH	262	261	1,138	1,142	0.4
OK	91	90	331	336	1.5
OR	90	90	430	424	-1.4
PA	616	599	2,893	2,792	-3.5
RI	1.8	1.5	7.5	6.2	-17.3
SC	23	21	98	98	
SD	103	99	413	414	0.2
TN	95	93	365	355	-2.7
TX	350	332	1,556	1,379	-11.4
UT	96	93	434	413	-4.8
VT	160	152	716	683	-4.6
VA	120	118	487	483	-0.8
WA	247	246	1,439	1,407	-2.2
WV	17	16	67	64	-4.5
WI	1,347	1,292	5,947	5,735	-3.6
WY	5.8	4.4	20.3	15.4	-24.1
US <sup>3</sup>	9,213	9,125	43,189	42,669	-1.2

<sup>1</sup> Includes dry cows, excludes heifers not yet fresh.

<sup>2</sup> Excludes milk sucked by calves.

<sup>3</sup> May not add due to rounding.

**Milk Cows and Production: By State and United States,  
Preliminary July-September, 2000-2001**

State	Jul-Sep Milk Cows <sup>1</sup>		Jul-Sep Milk Production <sup>2</sup>		Change From 2000
	2000	2001	2000	2001	
	<i>1,000 Head</i>	<i>1,000 Head</i>	<i>Million Pounds</i>	<i>Million Pounds</i>	<i>Percent</i>
AL	24	21	72	64	-11.1
AK	0.9	1.1	3.28	3.61	10.1
AZ	140	140	674	673	-0.1
AR	42	40	118	108	-8.5
CA	1,533	1,595	8,061	8,351	3.6
CO	89	93	487	513	5.3
CT	26	24	113	109	-3.5
DE	9.5	9.0	32.0	36.5	14.1
FL	157	153	533	533	
GA	87	85	310	317	2.3
HI	8.0	7.4	29.8	27.1	-9.1
ID	355	371	1,893	2,020	6.7
IL	120	115	502	475	-5.4
IN	147	154	582	625	7.4
IA	215	207	968	908	-6.2
KS	91	90	370	365	-1.4
KY	132	128	398	388	-2.5
LA	57	55	144	131	-9.0
ME	39	38	166	167	0.6
MD	83	82	323	317	-1.9
MA	22	21	95	90	-5.3
MI	301	302	1,429	1,427	-0.1
MN	532	510	2,270	2,135	-5.9
MS	36	35	112	105	-6.3
MO	153	144	524	447	-14.7
MT	18	19	79	87	10.1
NE	77	71	312	274	-12.2
NV	25	25	123	122	-0.8
NH	18	18	75	79	5.3
NJ	16	15	65	61	-6.2
NM	255	268	1,301	1,407	8.1
NY	682	672	2,986	2,963	-0.8
NC	71	67	282	281	-0.4
ND	48	44	177	162	-8.5
OH	263	258	1,098	1,079	-1.7
OK	91	89	319	315	-1.3
OR	90	90	428	426	-0.5
PA	619	598	2,727	2,655	-2.6
RI	1.8	1.4	6.8	5.7	-16.2
SC	22	20	81	81	
SD	102	99	413	406	-1.7
TN	94	91	320	315	-1.6
TX	348	322	1,239	1,113	-10.2
UT	97	93	438	408	-6.8
VT	160	152	693	671	-3.2
VA	120	118	447	447	
WA	247	247	1,420	1,418	-0.1
WV	17	16	64	63	-1.6
WI	1,342	1,283	5,839	5,429	-7.0
WY	5.4	4.5	18.9	16.2	-14.3
US <sup>3</sup>	9,229	9,101	41,161	40,619	-1.3

<sup>1</sup> Includes dry cows, excludes heifers not yet fresh.

<sup>2</sup> Excludes milk sucked by calves.

<sup>3</sup> May not add due to rounding.

## Reliability Statement

**Survey Procedures:** Primary data used to determine these estimates were obtained from a sample of producers. Individual States maintain a list of all known milk producers and information on the size of their herd. States use all known sources of producers to ensure that their lists are as complete as possible. Generally, all large producers and a sample of small producers are included in the survey. Questionnaires are mailed to producers near the end of the month to obtain data for the first day of the month. Additional reports are obtained by telephone, as needed, to supplement the mail response.

**Estimation Procedures:** State offices prepare these estimates using survey indications, historic trends, and any available administrative data. Individual State estimates are reviewed by the Agricultural Statistics Board for reasonableness.

**Revision Policy:** Milk production, rate per cow, and number of cows are subject to revision the following month for monthly States or the following quarter for the quarterly States. Normally, Federal Market Order sales are the main basis for revisions. However, data for all orders are not available in time for this revision. Estimates are again subject to revisions in February each year based on additional administrative data. In the event that additional changes are necessary, a third revision is possible in February the following year. Estimates are again reviewed after data from the five-year Census of Agriculture are available. No revisions are made after that date.

**Reliability:** Since all operations with dairy animals are not included in the sample, survey estimates are subject to sampling variability. Survey results are also subject to non-sampling errors such as omissions, duplications, and mistakes in reporting, recording, and processing the data. The effects of these errors cannot be measured directly. They are minimized through rigid quality controls in the data collection process and through a careful review of all reported data for consistency and reasonableness.

To assist users in evaluating the reliability of the estimates in this report, the "Root Mean Square Error" is shown for selected items on the next page. The "Root Mean Square Error" is a statistical measure based on past performance and is computed using the differences between first and final estimates. The "Root Mean Square Error" for milk cow inventory estimates over the past 10 July-September quarters is 1.1 percent. This means that chances are 2 out of 3 that the final July-September estimate will not be above or below the current estimate of 9.10 million head by more than 1.1 percent. Chances are 9 out of 10 that the difference will not exceed 2.0 percent.

**Reliability of July-September Milk Estimates <sup>1</sup>**

Item	Root Mean Square Error	90% Confidence Level		Difference Between First and Latest Estimates			Quarters	
				Average	Smallest	Largest	First Above Latest	First Below Latest
				<i>Million Pounds</i>	<i>Million Pounds</i>	<i>Million Pounds</i>	<i>Number</i>	<i>Number</i>
Milk Production	<i>Percent</i> 0.7	<i>Percent</i> 1.2	<i>Million Pounds</i> 487	<i>Million Pounds</i> 239	<i>Million Pounds</i> 34	<i>Million Pounds</i> 380	<i>Number</i> 10	<i>Number</i> 0
All Milk Cows	<i>Percent</i> 1.1	<i>Percent</i> 2.0	<i>1,000 Head</i> 182	<i>1,000 Head</i> 81	<i>1,000 Head</i> 5	<i>1,000 Head</i> 179	<i>Number</i> 8	<i>Number</i> 2

<sup>1</sup> Based on records for the past 10 July-September quarters.



The next "Milk Production" report will be released at 3 p.m. ET on November 15, 2001.

The United States Department of Agriculture (USDA) prohibits discrimination in all its programs on the basis of race, color, national origin, gender, religion, age, disability, political beliefs, sexual orientation, and marital or family status. (Not all prohibited bases apply to all programs.) Persons with disabilities who require alternative means for communication of program information (braille, large print, audiotape, etc.) should contact the USDA's TARGET Center at 202-720-2600 (voice and TDD).

To file a complaint of discrimination, write USDA, Director, Office of Civil Rights, Room 326-W, Whitten Building, 14th and Independence Avenue, SW, Washington, D.C., 20250-9410, or call 202-720-5964 (voice or TDD). USDA is an equal opportunity provider and employer.

## **ACCESS TO REPORTS!!**

---

For your convenience, there are several ways to obtain NASS reports, data products, and services:

### **INTERNET ACCESS**

All NASS reports are available free of charge on the worldwide Internet. For access, connect to the Internet and go to the NASS Home Page at: <http://www.usda.gov/nass/>. Select "Today's Reports" or Publications and then Reports by Calendar or Publications and then Search, by Title or Subject.

### **E-MAIL SUBSCRIPTION**

There are two options for subscribing via e-mail. All NASS reports are available by subscription free of charge direct to your e-mail address. 1) Starting with the NASS Home Page at <http://www.usda.gov/nass/>, click on **Publications**, then click on the **Subscribe by E-mail** button which takes you to the page describing e-mail delivery of reports. Finally, click on **Go to the Subscription Page** and follow the instructions. 2) If you do NOT have Internet access, send an e-mail message to: [usda-reports@usda.mannlib.cornell.edu](mailto:usda-reports@usda.mannlib.cornell.edu). In the body of the message type the word: **list**.

### **AUTOFAX ACCESS**

NASSFax service is available for some reports from your fax machine. Please call 202-720-2000, using the handset attached to your fax. Respond to the voice prompts. Document 0411 is a list of available reports.

### **----- PRINTED REPORTS OR DATA PRODUCTS**

**CALL OUR TOLL-FREE ORDER DESK: 800-999-6779 (U.S. and Canada)**  
**Other areas, please call 703-834-0125      FAX: 703-834-0110**  
**(Visa, MasterCard, check, or money order acceptable for payment.)**

-----

### **ASSISTANCE**

For **assistance** with general agricultural statistics or further information about NASS or its products or services, contact the **Agricultural Statistics Hotline** at **800-727-9540**, 7:30 a.m. to 4:00 p.m. ET, or e-mail: [nass@nass.usda.gov](mailto:nass@nass.usda.gov).