

Released November 15, 2001, by the National Agricultural Statistics Service (NASS), Agricultural Statistics Board, U.S. Department of Agriculture. For information on "Milk Production" call Ty Kalas at 202-690-3236, office hours 7:00 a.m. to 4:30 p.m. ET.

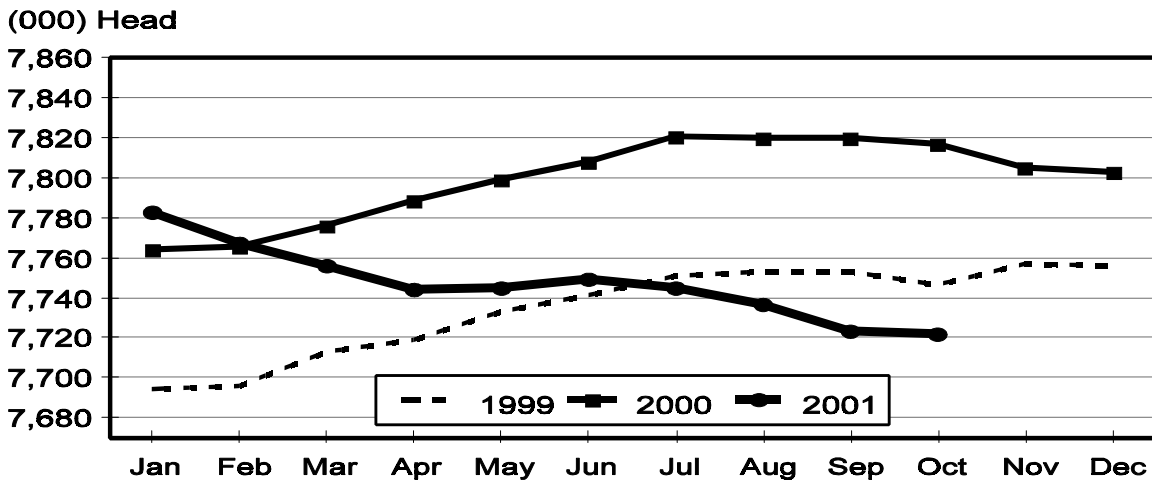
## October Milk Production Down 0.2 Percent

**Milk production** in the 20 major States during October totaled 11.8 billion pounds, down 0.2 percent from October 2000. September revised production, at 11.4 billion pounds, was down 0.6 percent from September 2000. The September revision represented an increase of 0.1 percent or 15 million pounds from last month's preliminary production estimate.

**Production per cow** in the 20 major States averaged 1,526 pounds for October, 15 pounds above October 2000.

**The number of milk cows** on farms in the 20 major States was 7.72 million head, 95,000 head less than October 2000, and 1,000 head less than September 2001.

## Monthly Milk Cows 20 States



**Milk Cows and Production: By Quarter, United States, 2000-2001 <sup>1</sup>**

Quarter	Milk Cows <sup>2</sup>		Milk Per Cow <sup>3</sup>		Milk Production <sup>3</sup>		
	2000	2001	2000	2001	2000	2001	Change From 2000
	<i>1,000 Head</i>	<i>1,000 Head</i>	<i>Pounds</i>	<i>Pounds</i>	<i>Million Pounds</i>	<i>Million Pounds</i>	<i>Percent</i>
Jan-Mar	9,188	9,157	4,640	4,511	42,630	41,306	-3.1
Apr-Jun	9,213	9,125	4,688	4,676	43,189	42,669	-1.2
Jul-Sep	9,229	9,099	4,460	4,466	41,161	40,634	-1.3
Oct-Dec	9,211		4,416		40,678		
Annual	9,210		18,204		167,658		

<sup>1</sup> May not add due to rounding.

<sup>2</sup> Includes dry cows, excludes heifers not yet fresh.

<sup>3</sup> Excludes milk sucked by calves.

**Milk Cows and Production: By Month, 20 Selected States, 2000-2001**

Month	Milk Cows <sup>1</sup>		Milk Per Cow <sup>2</sup>		Milk Production <sup>2</sup>		
	2000	2001	2000	2001	2000	2001	Change From 2000
	<i>1,000 Head</i>	<i>1,000 Head</i>	<i>Pounds</i>	<i>Pounds</i>	<i>Million Pounds</i>	<i>Million Pounds</i>	<i>Percent</i>
Jan	7,764	7,783	1,579	1,550	12,259	12,062	-1.6
Feb	7,766	7,767	1,506	1,431	11,694	11,112	-5.0
Mar	7,776	7,756	1,632	1,599	12,687	12,401	-2.3
Apr	7,789	7,744	1,593	1,570	12,411	12,158	-2.0
May	7,799	7,745	1,636	1,632	12,758	12,638	-0.9
Jun	7,808	7,749	1,547	1,556	12,082	12,057	-0.2
Jul	7,821	7,745	1,561	1,552	12,205	12,020	-1.5
Aug	7,820	7,737	1,525	1,522	11,928	11,772	-1.3
Sep	7,820	7,723	1,464	1,474	11,451	11,387	-0.6
Oct	7,817	7,722	1,511	1,526	11,813	11,785	-0.2
Nov	7,805		1,459		11,385		
Dec	7,803		1,519		11,855		
Annual	7,799		18,532		144,528		

<sup>1</sup> Includes dry cows, excludes heifers not yet fresh.

<sup>2</sup> Excludes milk sucked by calves.

**Estimated Milk Cows and Production: By Month, United States, 2000-2001 <sup>1</sup>**

Month	Milk Cows <sup>2</sup>		Milk Per Cow <sup>3</sup>		Milk Production <sup>3</sup>		
	2000	2001	2000	2001	2000	2001	Change From 2000
	<i>1,000 Head</i>	<i>1,000 Head</i>	<i>Pounds</i>	<i>Pounds</i>	<i>Million Pounds</i>	<i>Million Pounds</i>	<i>Percent</i>
Jan	9,183	9,174	1,553	1,527	14,263	14,005	-1.8
Feb	9,183	9,155	1,482	1,409	13,606	12,902	-5.2
Mar	9,197	9,141	1,605	1,575	14,761	14,399	-2.5
Apr	9,202	9,123	1,564	1,543	14,390	14,077	-2.2
May	9,214	9,124	1,605	1,604	14,791	14,632	-1.1
Jun	9,224	9,128	1,519	1,529	14,008	13,960	-0.3
Jul	9,229	9,118	1,530	1,523	14,117	13,885	-1.6
Aug	9,228	9,101	1,495	1,494	13,798	13,598	-1.4
Sep	9,229	9,078	1,435	1,449	13,246	13,151	-0.7
Oct	9,222	9,076	1,486	1,506	13,708	13,667	-0.3
Nov	9,208		1,435		13,212		
Dec	9,204		1,495		13,758		
Annual	9,210		18,204		167,658		

<sup>1</sup> 2001 revised.

<sup>2</sup> Includes dry cows, excludes heifers not yet fresh.

<sup>3</sup> Excludes milk sucked by calves.

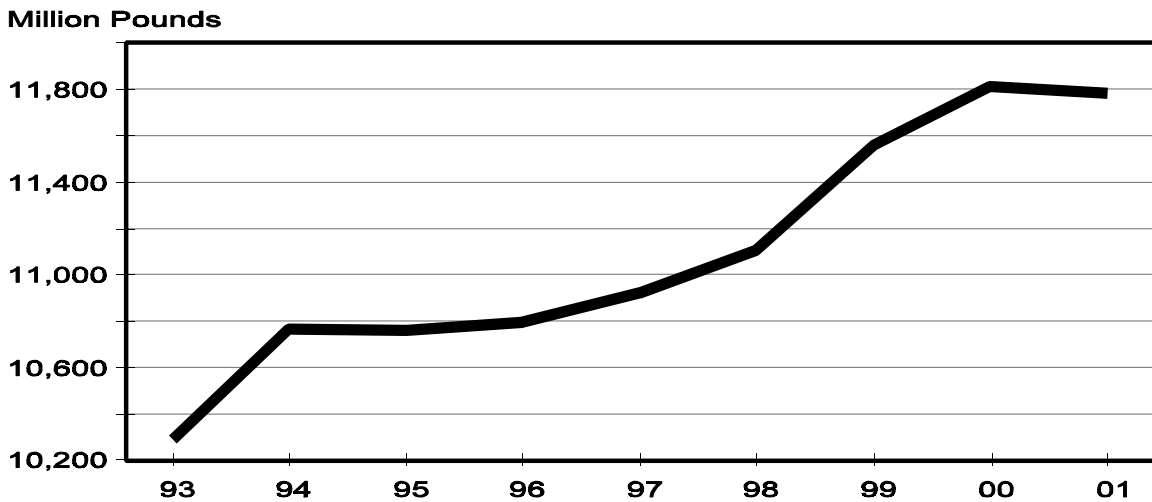
**Milk Cows and Production: By State, October 2000-2001**

State	Milk Cows <sup>1</sup>		Milk Per Cow <sup>2</sup>		Milk Production <sup>2</sup>		
	2000	2001	2000	2001	2000	2001	Change From 2000
	<i>1,000 Head</i>	<i>1,000 Head</i>	<i>Pounds</i>	<i>Pounds</i>	<i>Million Pounds</i>	<i>Million Pounds</i>	<i>Percent</i>
AZ	140	140	1,620	1,680	227	235	3.5
CA	1,545	1,605	1,735	1,755	2,681	2,817	5.1
FL	156	152	1,120	1,130	175	172	-1.7
ID	356	369	1,760	1,810	627	668	6.5
IL	119	114	1,400	1,390	167	158	-5.4
IN	148	154	1,345	1,390	199	214	7.5
IA	215	206	1,490	1,480	320	305	-4.7
KY	131	126	1,040	1,030	136	130	-4.4
MI	302	300	1,580	1,560	477	468	-1.9
MN	530	505	1,435	1,400	761	707	-7.1
MO	152	141	1,180	1,085	179	153	-14.5
NM	261	273	1,690	1,750	441	478	8.4
NY	674	670	1,430	1,460	964	978	1.5
OH	264	256	1,360	1,375	359	352	-1.9
PA	618	596	1,470	1,500	908	894	-1.5
TX	345	317	1,275	1,235	440	391	-11.1
VT	158	152	1,445	1,445	228	220	-3.5
VA	119	118	1,285	1,290	153	152	-0.7
WA	248	247	1,860	1,865	461	461	0.0
WI	1,336	1,281	1,430	1,430	1,910	1,832	-4.1
20-State Total	7,817	7,722	1,511	1,526	11,813	11,785	-0.2

<sup>1</sup> Includes dry cows, excludes heifers not yet fresh.

<sup>2</sup> Excludes milk sucked by calves.

**October Milk Production, 1993-2001  
20 States**



**Milk Cows and Production: By State, September 2000-2001<sup>1</sup>**

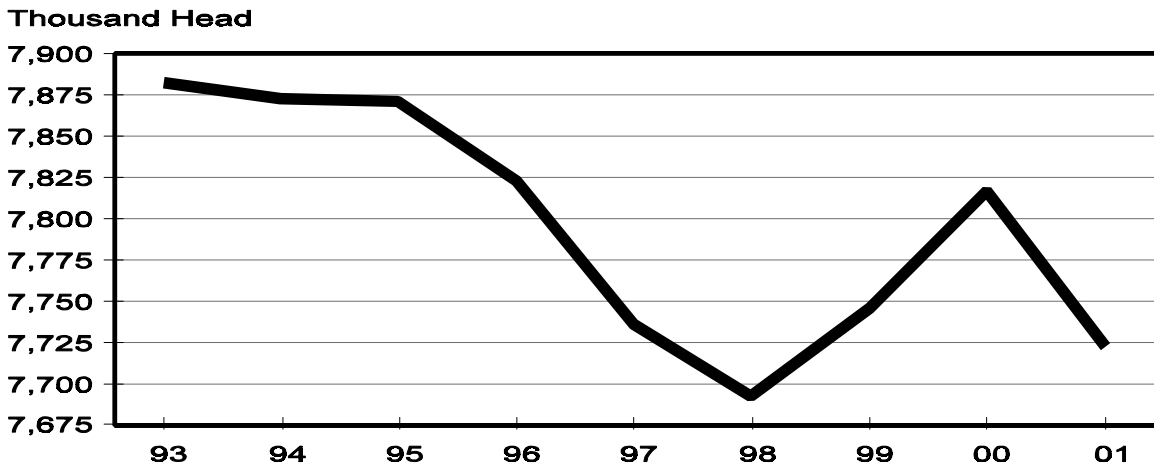
State	Milk Cows <sup>2</sup>		Milk per Cow <sup>3</sup>		Milk Production <sup>3</sup>		
	2000	2001	2000	2001	2000	2001	Change From 2000
	<i>1,000 Head</i>	<i>1,000 Head</i>	<i>Pounds</i>	<i>Pounds</i>	<i>Million Pounds</i>	<i>Million Pounds</i>	<i>Percent</i>
AZ	140	140	1,520	1,545	213	216	1.4
CA	1,540	1,601	1,685	1,690	2,595	2,706	4.3
FL	157	152	1,070	1,030	168	157	-6.5
ID	356	369	1,720	1,770	612	653	6.7
IL	120	115	1,350	1,345	162	155	-4.3
IN	148	154	1,275	1,320	189	203	7.4
IA	215	206	1,450	1,430	312	295	-5.4
KY	132	127	980	975	129	124	-3.9
MI	300	301	1,515	1,520	455	458	0.7
MN	530	505	1,380	1,350	731	682	-6.7
MO	153	142	1,080	1,020	165	145	-12.1
NM	258	270	1,645	1,700	424	459	8.3
NY	678	670	1,410	1,430	956	958	0.2
OH	264	257	1,360	1,370	359	352	-1.9
PA	619	596	1,420	1,450	879	864	-1.7
TX	346	319	1,145	1,115	396	356	-10.1
VT	159	152	1,410	1,425	224	217	-3.1
VA	119	118	1,220	1,235	145	146	0.7
WA	247	247	1,845	1,835	456	453	-0.7
WI	1,339	1,282	1,405	1,395	1,881	1,788	-4.9
20-State Total	7,820	7,723	1,464	1,474	11,451	11,387	-0.6

<sup>1</sup> 2001 revised.

<sup>2</sup> Includes dry cows, excludes heifers not yet fresh.

<sup>3</sup> Excludes milk sucked by calves.

**October Milk Cows, 1993-2001  
20 States**



## Reliability Statement

**Survey Procedures:** Primary data used to determine these estimates were obtained from a sample of producers. Individual States maintain a list of all known milk producers and information on the size of their herd. States use all known sources of producers to ensure that their lists are as complete as possible. Generally, all large producers and a sample of small producers are included in the survey. Questionnaires are mailed to producers near the end of the month to obtain data for the first day of the month. Additional reports are obtained by telephone, as needed, to supplement the mail response.

**Estimation Procedures:** State offices prepare these estimates using survey indications, historic trends, and any available administrative data. Individual State estimates are reviewed by the Agricultural Statistics Board for reasonableness.

**Revision Policy:** Milk production, rate per cow, and number of cows are subject to revision the following month for monthly States or the following quarter for the quarterly States. Normally, Federal Market Order sales are the main basis for revisions. However, data for all orders are not available in time for this revision. Estimates are again subject to revisions in February each year based on additional administrative data. In the event that additional changes are necessary, a third revision is possible in February the following year. Estimates are again reviewed after data from the five-year Census of Agriculture are available. No revisions are made after that date.

**Reliability:** Since all operations with dairy animals are not included in the sample, survey estimates are subject to sampling variability. Survey results are also subject to non-sampling errors such as omissions, duplications, and mistakes in reporting, recording, and processing the data. The effects of these errors cannot be measured directly. They are minimized through rigid quality controls in the data collection process and through a careful review of all reported data for consistency and reasonableness.

To assist users in evaluating the reliability of the estimates in this report, the "Root Mean Square Error" is shown for selected items on the next page. The "Root Mean Square Error" is a statistical measure based on past performance and is computed using the differences between first and final estimates. The "Root Mean Square Error" for milk cow inventory estimates over the past 10 July-September quarters is 1.1 percent. This means that chances are 2 out of 3 that the final July-September estimate will not be above or below the current estimate of 9.10 million head by more than 1.1 percent. Chances are 9 out of 10 that the difference will not exceed 2.0 percent.

**Reliability of July-September Milk Estimates <sup>1</sup>**

Item	Root Mean Square Error	90% Confidence Level		Difference Between First and Latest Estimates			Quarters	
				Average	Smallest	Largest	First Above Latest	First Below Latest
				<i>Million Pounds</i>	<i>Million Pounds</i>	<i>Million Pounds</i>	<i>Number</i>	<i>Number</i>
Milk Production	<i>Percent</i> 0.7	<i>Percent</i> 1.2	<i>Million Pounds</i> 488	<i>Million Pounds</i> 239	<i>Million Pounds</i> 34	<i>Million Pounds</i> 380	<i>Number</i> 10	<i>Number</i> 0
All Milk Cows	<i>Percent</i> 1.1	<i>Percent</i> 2.0	<i>1,000 Head</i> 182	<i>1,000 Head</i> 81	<i>1,000 Head</i> 5	<i>1,000 Head</i> 179	<i>Number</i> 8	<i>Number</i> 2

<sup>1</sup> Based on records for the past 10 July-September quarters.

The next "Milk Production" report will be released at 3 p.m. ET on December 14, 2001.

The United States Department of Agriculture (USDA) prohibits discrimination in all its programs on the basis of race, color, national origin, gender, religion, age, disability, political beliefs, sexual orientation, and marital or family status. (Not all prohibited bases apply to all programs.) Persons with disabilities who require alternative means for communication of program information (braille, large print, audiotape, etc.) should contact the USDA's TARGET Center at 202-720-2600 (voice and TDD).

To file a complaint of discrimination, write USDA, Director, Office of Civil Rights, Room 326-W, Whitten Building, 1400 Independence Avenue, SW, Washington, D.C., 20250-9410, or call 202-720-5964 (voice or TDD). USDA is an equal opportunity provider and employer.

## **ACCESS TO REPORTS!!**

---

For your convenience, there are several ways to obtain NASS reports, data products, and services:

### **INTERNET ACCESS**

All NASS reports are available free of charge on the worldwide Internet. For access, connect to the Internet and go to the NASS Home Page at: <http://www.usda.gov/nass/>. Select "Today's Reports" or Publications and then Reports by Calendar or Publications and then Search, by Title or Subject.

### **E-MAIL SUBSCRIPTION**

There are two options for subscribing via e-mail. All NASS reports are available by subscription free of charge direct to your e-mail address. 1) Starting with the NASS Home Page at <http://www.usda.gov/nass/>, click on **Publications**, then click on the **Subscribe by E-mail** button which takes you to the page describing e-mail delivery of reports. Finally, click on **Go to the Subscription Page** and follow the instructions. 2) If you do NOT have Internet access, send an e-mail message to: [usda-reports@usda.mannlib.cornell.edu](mailto:usda-reports@usda.mannlib.cornell.edu). In the body of the message type the word: **list**.

### **AUTOFAX ACCESS**

NASSFax service is available for some reports from your fax machine. Please call 202-720-2000, using the handset attached to your fax. Respond to the voice prompts. Document 0411 is a list of available reports.

-----  
**PRINTED REPORTS OR DATA PRODUCTS**

**CALL OUR TOLL-FREE ORDER DESK: 800-999-6779 (U.S. and Canada)**  
**Other areas, please call 703-605-6220      FAX: 703-605-6900**  
**(Visa, MasterCard, check, or money order acceptable for payment.)**  
-----

### **ASSISTANCE**

For **assistance** with general agricultural statistics or further information about NASS or its products or services, contact the **Agricultural Statistics Hotline** at **800-727-9540**, 7:30 a.m. to 4:00 p.m. ET, or e-mail: [nass@nass.usda.gov](mailto:nass@nass.usda.gov).