

Released January 17, 2002, by the National Agricultural Statistics Service (NASS), Agricultural Statistics Board, U.S. Department of Agriculture. For information on "Milk Production" call Ty Kalas at 202-690-3236, office hours 7:00 a.m. to 4:30 p.m. ET.

December Milk Production Up 1.0 Percent

Milk production in the 20 major States during December totaled 12.0 billion pounds, up 1.0 percent from December 2000. November revised production, at 11.5 billion pounds, was up 0.8 percent from November 2000. The November revision represented an increase of 0.3 percent or 38 million pounds from last month's preliminary production estimate.

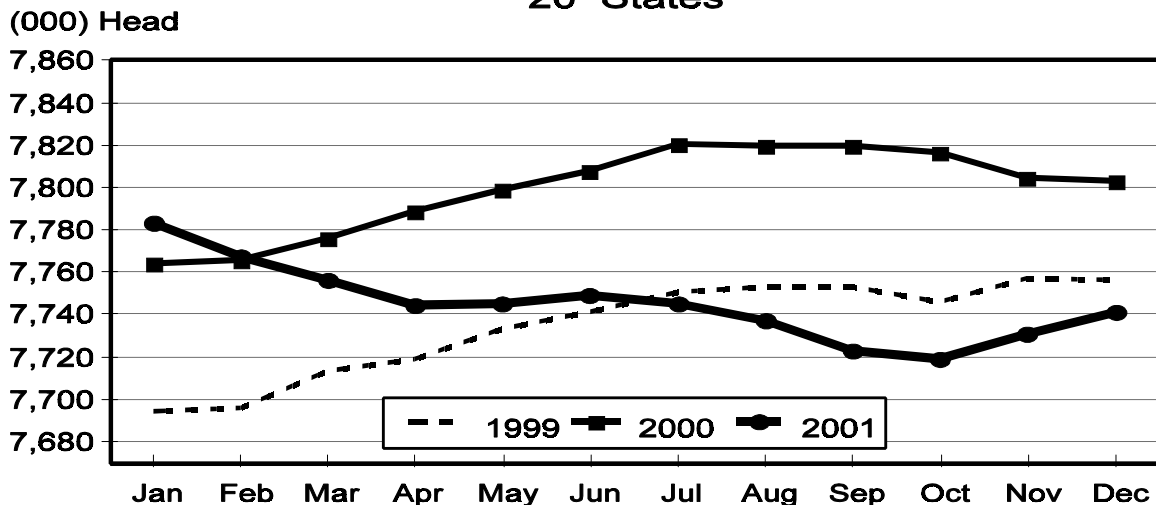
Production per cow in the 20 major States averaged 1,547 pounds for December, 28 pounds above December 2000.

The number of cows on farms in the 20 major States was 7.74 million head, 62,000 head less than December 2000, but 10,000 head more than November 2001.

October-December Milk Production Up 0.2 Percent

The quarterly production of milk for the U.S. was 40.8 billion pounds, 0.2 percent above the October-December period last year. The average number of milk cows in the U.S. during the October-December quarter was 9.10 million head, 113,000 head less than the same period last year.

Monthly Milk Cows 20 States



Milk Cows and Production: By Quarter, United States, 2000-2001¹

Quarter	Milk Cows ²		Milk Per Cow ³		Milk Production ³		
	2000	2001	2000	2001	2000	2001	Change From 2000
	<i>1,000 Head</i>	<i>1,000 Head</i>	<i>Pounds</i>	<i>Pounds</i>	<i>Million Pounds</i>	<i>Million Pounds</i>	<i>Percent</i>
Jan-Mar	9,188	9,157	4,640	4,511	42,630	41,306	-3.1
Apr-Jun	9,213	9,125	4,688	4,676	43,189	42,669	-1.2
Jul-Sep	9,229	9,100	4,460	4,464	41,161	40,619	-1.3
Oct-Dec	9,211	9,098	4,416	4,481	40,678	40,764	0.2
Annual	9,210	9,120	18,204	18,131	167,658	165,358	-1.4

¹ May not add due to rounding.

² Includes dry cows, excludes heifers not yet fresh.

³ Excludes milk sucked by calves.

Milk Cows and Production: By Month, 20 Selected States, 2000-2001

Month	Milk Cows ²		Milk Per Cow ³		Milk Production ³		
	2000	2001	2000	2001	2000	2001	Change From 2000
	<i>1,000 Head</i>	<i>1,000 Head</i>	<i>Pounds</i>	<i>Pounds</i>	<i>Million Pounds</i>	<i>Million Pounds</i>	<i>Percent</i>
Jan	7,764	7,783	1,579	1,550	12,259	12,062	-1.6
Feb	7,766	7,767	1,506	1,431	11,694	11,112	-5.0
Mar	7,776	7,756	1,632	1,599	12,687	12,401	-2.3
Apr	7,789	7,744	1,593	1,570	12,411	12,158	-2.0
May	7,799	7,745	1,636	1,632	12,758	12,638	-0.9
Jun	7,808	7,749	1,547	1,556	12,082	12,057	-0.2
Jul	7,821	7,745	1,561	1,552	12,205	12,020	-1.5
Aug	7,820	7,737	1,525	1,522	11,928	11,772	-1.3
Sep	7,820	7,723	1,464	1,474	11,451	11,387	-0.6
Oct	7,817	7,719	1,511	1,520	11,813	11,732	-0.7
Nov	7,805	7,731	1,459	1,484	11,385	11,474	0.8
Dec	7,803	7,741	1,519	1,547	11,855	11,974	1.0
Annual	7,799	7,745	18,532	18,436	144,528	142,787	-1.2

¹ 2001 revised.

² Includes dry cows, excludes heifers not yet fresh.

³ Excludes milk sucked by calves.

Estimated Milk Cows and Production: By Month, United States, 2000-2001¹

Month	Milk Cows ²		Milk Per Cow ³		Milk Production ³		
	2000	2001	2000	2001	2000	2001	Change From 2000
	<i>1,000 Head</i>	<i>1,000 Head</i>	<i>Pounds</i>	<i>Pounds</i>	<i>Million Pounds</i>	<i>Million Pounds</i>	<i>Percent</i>
Jan	9,183	9,174	1,553	1,527	14,263	14,005	-1.8
Feb	9,183	9,155	1,482	1,409	13,606	12,902	-5.2
Mar	9,197	9,141	1,605	1,575	14,761	14,399	-2.5
Apr	9,202	9,123	1,564	1,543	14,390	14,077	-2.2
May	9,214	9,124	1,605	1,604	14,791	14,632	-1.1
Jun	9,224	9,128	1,519	1,529	14,008	13,960	-0.3
Jul	9,229	9,112	1,530	1,523	14,117	13,877	-1.7
Aug	9,228	9,102	1,495	1,494	13,798	13,595	-1.5
Sep	9,229	9,086	1,435	1,447	13,246	13,147	-0.7
Oct	9,222	9,084	1,486	1,497	13,708	13,594	-0.8
Nov	9,208	9,099	1,435	1,461	13,212	13,295	0.6
Dec	9,204	9,110	1,495	1,523	13,758	13,875	0.9
Annual	9,210	9,120	18,204	18,131	167,658	165,358	-1.4

¹ 2001 revised.

² Includes dry cows, excludes heifers not yet fresh.

³ Excludes milk sucked by calves.

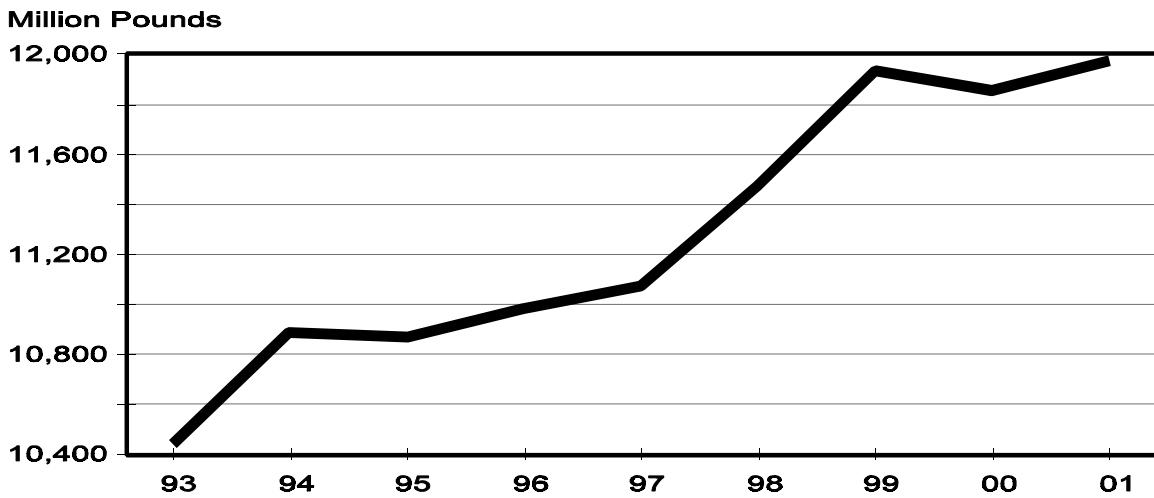
Milk Cows and Production: By State, December 2000-2001

State	Milk Cows ¹		Milk Per Cow ²		Milk Production ²		
	2000	2001	2000	2001	2000	2001	Change From 2000
	<i>1,000 Head</i>	<i>1,000 Head</i>	<i>Pounds</i>	<i>Pounds</i>	<i>Million Pounds</i>	<i>Million Pounds</i>	<i>Percent</i>
AZ	140	140	1,735	1,730	243	242	-0.4
CA	1,556	1,615	1,735	1,730	2,700	2,794	3.5
FL	156	152	1,325	1,330	207	202	-2.4
ID	354	375	1,730	1,750	612	656	7.2
IL	118	115	1,460	1,490	172	171	-0.6
IN	150	155	1,380	1,395	207	216	4.3
IA	215	206	1,495	1,550	321	319	-0.6
KY	131	125	1,045	1,105	137	138	0.7
MI	300	298	1,575	1,620	473	483	2.1
MN	525	500	1,485	1,475	780	738	-5.4
MO	151	141	1,180	1,145	178	161	-9.6
NM	261	288	1,670	1,700	436	490	12.4
NY	670	670	1,410	1,450	945	972	2.9
OH	265	258	1,400	1,430	371	369	-0.5
PA	613	592	1,470	1,540	901	912	1.2
TX	345	312	1,305	1,375	450	429	-4.7
VT	158	154	1,435	1,495	227	230	1.3
VA	119	118	1,330	1,345	158	159	0.6
WA	246	247	1,820	1,845	448	456	1.8
WI	1,330	1,280	1,420	1,435	1,889	1,837	-2.8
20-State Total	7,803	7,741	1,519	1,547	11,855	11,974	1.0

¹ Includes dry cows, excludes heifers not yet fresh.

² Excludes milk sucked by calves.

**December Milk Production, 1993-2001
20 States**



Milk Cows and Production: By State, November 2000-2001 ¹

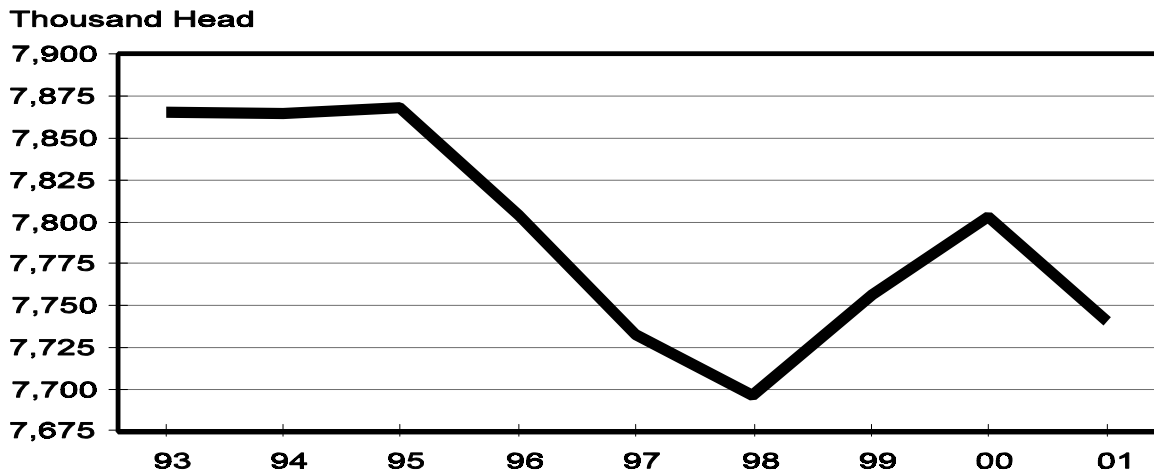
State	Milk Cows ²		Milk per Cow ³		Milk Production ³		
	2000	2001	2000	2001	2000	2001	Change From 2000
	<i>1,000 Head</i>	<i>1,000 Head</i>	<i>Pounds</i>	<i>Pounds</i>	<i>Million Pounds</i>	<i>Million Pounds</i>	<i>Percent</i>
AZ	140	140	1,550	1,650	217	231	6.5
CA	1,550	1,610	1,670	1,690	2,589	2,721	5.1
FL	156	152	1,200	1,160	187	176	-5.9
ID	354	372	1,670	1,730	591	644	9.0
IL	118	115	1,390	1,375	164	158	-3.7
IN	148	155	1,320	1,345	195	208	6.7
IA	215	206	1,450	1,485	312	306	-1.9
KY	131	125	1,010	1,050	132	131	-0.8
MI	299	299	1,540	1,525	460	456	-0.9
MN	525	500	1,405	1,380	738	690	-6.5
MO	151	141	1,170	1,080	177	152	-14.1
NM	261	280	1,580	1,665	412	466	13.1
NY	673	670	1,375	1,440	925	965	4.3
OH	264	256	1,325	1,360	350	348	-0.6
PA	616	596	1,425	1,460	878	870	-0.9
TX	345	315	1,225	1,265	423	398	-5.9
VT	158	154	1,380	1,400	218	216	-0.9
VA	119	118	1,270	1,295	151	153	1.3
WA	248	247	1,765	1,775	438	438	
WI	1,334	1,280	1,370	1,365	1,828	1,747	-4.4
20-State Total	7,805	7,731	1,459	1,484	11,385	11,474	0.8

¹ 2001 revised.

² Includes dry cows, excludes heifers not yet fresh.

³ Excludes milk sucked by calves.

**December Milk Cows, 1993-2001
20 States**



**Milk Cows and Production: By State and United States,
Revised July-September, 2000-2001**

State	Jul-Sep Milk Cows ¹		Jul-Sep Milk Production ²		Change From 2000
	2000	2001	2000	2001	
	<i>1,000 Head</i>	<i>1,000 Head</i>	<i>Million Pounds</i>	<i>Million Pounds</i>	<i>Percent</i>
AL	24	21	72	64	-11.1
AK	0.9	1.1	3.28	3.61	10.1
AZ	140	140	674	673	-0.1
AR	42	40	118	108	-8.5
CA	1,533	1,595	8,061	8,335	3.4
CO	89	92	487	494	1.4
CT	26	24	113	109	-3.5
DE	9.5	9.0	32.0	33.1	3.4
FL	157	153	533	522	-2.1
GA	87	85	310	315	1.6
HI	8.0	7.4	29.8	27.1	-9.1
ID	355	370	1,893	2,015	6.4
IL	120	115	502	475	-5.4
IN	147	154	582	625	7.4
IA	215	207	968	908	-6.2
KS	91	90	370	365	-1.4
KY	132	128	398	387	-2.8
LA	57	55	144	131	-9.0
ME	39	38	166	167	0.6
MD	83	82	323	317	-1.9
MA	22	21	95	91	-4.2
MI	301	302	1,429	1,427	-0.1
MN	532	508	2,270	2,123	-6.5
MS	36	35	112	102	-8.9
MO	153	144	524	447	-14.7
MT	18	19	79	88	11.4
NE	77	71	312	274	-12.2
NV	25	25	123	122	-0.8
NH	18	18	75	79	5.3
NJ	16	14	65	57	-12.3
NM	255	268	1,301	1,407	8.1
NY	682	672	2,986	2,976	-0.3
NC	71	67	282	281	-0.4
ND	48	44	177	162	-8.5
OH	263	258	1,098	1,079	-1.7
OK	91	89	319	315	-1.3
OR	90	93	428	440	2.8
PA	619	598	2,727	2,655	-2.6
RI	1.8	1.5	6.8	5.8	-14.7
SC	22	20	81	80	-1.2
SD	102	99	413	406	-1.7
TN	94	90	320	305	-4.7
TX	348	322	1,239	1,113	-10.2
UT	97	93	438	419	-4.3
VT	160	152	693	670	-3.3
VA	120	118	447	449	0.4
WA	247	247	1,420	1,417	-0.2
WV	17	16	64	63	-1.6
WI	1,342	1,284	5,839	5,476	-6.2
WY	5.4	4.5	18.9	16.2	-14.3
US ³	9,229	9,100	41,161	40,619	-1.3

¹ Includes dry cows, excludes heifers not yet fresh.

² Excludes milk sucked by calves.

³ May not add due to rounding.

**Milk Cows and Production: By State and United States,
Preliminary October-December, 2000-2001**

State	Oct-Dec Milk Cows ¹		Oct-Dec Milk Production ²		Change From 2000
	2000	2001	2000	2001	
	<i>1,000 Head</i>	<i>1,000 Head</i>	<i>Million Pounds</i>	<i>Million Pounds</i>	<i>Percent</i>
AL	23	21	78	70	-10.3
AK	1.0	1.2	3.41	3.72	9.1
AZ	140	140	687	708	3.1
AR	41	39	124	105	-15.3
CA	1,550	1,610	7,970	8,317	4.4
CO	90	91	483	487	0.8
CT	26	24	114	111	-2.6
DE	9.0	9.0	33.1	33.9	2.4
FL	156	152	569	547	-3.9
GA	86	85	337	342	1.5
HI	7.6	7.5	25.9	23.5	-9.3
ID	355	372	1,830	1,972	7.8
IL	118	115	503	487	-3.2
IN	149	155	601	638	6.2
IA	215	206	953	930	-2.4
KS	94	93	395	410	3.8
KY	131	125	405	399	-1.5
LA	57	54	163	146	-10.4
ME	39	38	160	163	1.9
MD	82	81	324	320	-1.2
MA	22	21	92	90	-2.2
MI	300	299	1,410	1,407	-0.2
MN	527	500	2,279	2,126	-6.7
MS	36	34	126	116	-7.9
MO	151	141	534	466	-12.7
MT	19	19	79	87	10.1
NE	79	69	316	279	-11.7
NV	25	25	120	120	
NH	18	18	74	80	8.1
NJ	16	13	63	53	-15.9
NM	261	280	1,289	1,434	11.2
NY	672	670	2,834	2,922	3.1
NC	69	66	288	285	-1.0
ND	48	43	168	156	-7.1
OH	264	257	1,080	1,070	-0.9
OK	91	88	314	316	0.6
OR	90	105	415	486	17.1
PA	616	595	2,687	2,676	-0.4
RI	1.6	1.4	6.2	5.6	-9.7
SC	22	20	88	84	-4.5
SD	101	98	409	406	-0.7
TN	94	89	340	320	-5.9
TX	345	315	1,313	1,218	-7.2
UT	95	93	405	408	0.7
VT	158	154	673	669	-0.6
VA	119	118	462	464	0.4
WA	247	247	1,347	1,353	0.4
WV	17	16	64	61	-4.7
WI	1,333	1,280	5,627	5,377	-4.4
WY	5.0	4.5	17.0	16.2	-4.7
US ³	9,211	9,098	40,678	40,764	0.2

¹ Includes dry cows, excludes heifers not yet fresh.

² Excludes milk sucked by calves.

³ May not add due to rounding.

Reliability Statement

Survey Procedures: Primary data used to determine these estimates were obtained from a sample of producers. Individual States maintain a list of all known milk producers and information on the size of their herd. States use all known sources of producers to ensure that their lists are as complete as possible. Generally, all large producers and a sample of small producers are included in the survey. Questionnaires are mailed to producers near the end of the month to obtain data for the first day of the month. Additional reports are obtained by telephone, as needed, to supplement the mail response.

Estimation Procedures: State offices prepare these estimates using survey indications, historic trends, and any available administrative data. Individual State estimates are reviewed by the Agricultural Statistics Board for reasonableness.

Revision Policy: Milk production, rate per cow, and number of cows are subject to revision the following month for monthly States or the following quarter for the quarterly States. Normally, Federal Market Order sales are the main basis for revisions. However, data for all orders are not available in time for this revision. Estimates are again subject to revisions in February each year based on additional administrative data. In the event that additional changes are necessary, a third revision is possible in February the following year. Estimates are again reviewed after data from the five-year Census of Agriculture are available. No revisions are made after that date.

Reliability: Since all operations with dairy animals are not included in the sample, survey estimates are subject to sampling variability. Survey results are also subject to non-sampling errors such as omissions, duplications, and mistakes in reporting, recording, and processing the data. The effects of these errors cannot be measured directly. They are minimized through rigid quality controls in the data collection process and through a careful review of all reported data for consistency and reasonableness.

To assist users in evaluating the reliability of the estimates in this report, the "Root Mean Square Error" is shown for selected items on the next page. The "Root Mean Square Error" is a statistical measure based on past performance and is computed using the differences between first and final estimates. The "Root Mean Square Error" for milk cow inventory estimates over the past 10 October-December quarters is 1.1 percent. This means that chances are 2 out of 3 that the final October-December estimate will not be above or below the current estimate of 9.10 million head by more than 1.1 percent. Chances are 9 out of 10 that the difference will not exceed 1.9 percent.

Reliability of October-December Milk Estimates ¹

Item	Root Mean Square Error	90% Confidence Level		Difference Between First and Latest Estimates			Quarters	
				Average	Smallest	Largest	First Above Latest	First Below Latest
				<i>Million Pounds</i>	<i>Million Pounds</i>	<i>Million Pounds</i>	<i>Number</i>	<i>Number</i>
Milk Production	<i>Percent</i> 0.5	<i>Percent</i> 0.9	<i>Million Pounds</i> 367	<i>Million Pounds</i> 149	<i>Million Pounds</i> 1	<i>Million Pounds</i> 385	<i>Number</i> 9	<i>Number</i> 1
All Milk Cows	<i>Percent</i> 1.1	<i>Percent</i> 1.9	<i>1,000 Head</i> 173	<i>1,000 Head</i> 78	<i>1,000 Head</i> 2	<i>1,000 Head</i> 195	<i>Number</i> 9	<i>Number</i> 1

¹ Based on records for the past 10 October-December quarters.

The next "Milk Production" report will be released at 3 p.m. ET on February 15, 2002.

The United States Department of Agriculture (USDA) prohibits discrimination in all its programs on the basis of race, color, national origin, gender, religion, age, disability, political beliefs, sexual orientation, and marital or family status. (Not all prohibited bases apply to all programs.) Persons with disabilities who require alternative means for communication of program information (braille, large print, audiotape, etc.) should contact the USDA's TARGET Center at 202-720-2600 (voice and TDD).

To file a complaint of discrimination, write USDA, Director, Office of Civil Rights, Room 326-W, Whitten Building, 1400 Independence Avenue, SW, Washington, D.C., 20250-9410, or call 202-720-5964 (voice or TDD). USDA is an equal opportunity provider and employer.

ACCESS TO REPORTS!!

For your convenience, there are several ways to obtain NASS reports, data products, and services:

INTERNET ACCESS

All NASS reports are available free of charge on the worldwide Internet. For access, connect to the Internet and go to the NASS Home Page at: <http://www.usda.gov/nass/>. Select "Today's Reports" or Publications and then Reports by Calendar or Publications and then Search, by Title or Subject.

E-MAIL SUBSCRIPTION

There are two options for subscribing via e-mail. All NASS reports are available by subscription free of charge direct to your e-mail address. 1) Starting with the NASS Home Page at <http://www.usda.gov/nass/>, click on **Publications**, then click on the **Subscribe by E-mail** button which takes you to the page describing e-mail delivery of reports. Finally, click on **Go to the Subscription Page** and follow the instructions. 2) If you do NOT have Internet access, send an e-mail message to: usda-reports@usda.mannlib.cornell.edu. In the body of the message type the word: **list**.

AUTOFAX ACCESS

NASSFax service is available for some reports from your fax machine. Please call 202-720-2000, using the handset attached to your fax. Respond to the voice prompts. Document 0411 is a list of available reports.

PRINTED REPORTS OR DATA PRODUCTS

CALL OUR TOLL-FREE ORDER DESK: 800-999-6779 (U.S. and Canada)
Other areas, please call 703-605-6220 FAX: 703-605-6900
(Visa, MasterCard, check, or money order acceptable for payment.)

ASSISTANCE

For **assistance** with general agricultural statistics or further information about NASS or its products or services, contact the **Agricultural Statistics Hotline** at **800-727-9540**, 7:30 a.m. to 4:00 p.m. ET, or e-mail: nass@nass.usda.gov.

Sharpen Your Strategy at USDA's 78th Outlook Forum



- ◆ **New Farm Legislation**
- ◆ **Biotech Crops in World Trade**
- ◆ **Protecting Livestock and Crops**
- ◆ **Tracking Crop and Product
Identity in the Food Chain**
- ◆ **2002 Commodity Prospects**
- ◆ **Competing in Global Markets**
- ◆ **Climate and Agriculture**

Put next year's economic and business outlook in focus at Outlook Forum 2002.

Attend this popular event to hear the latest on market-shaping developments ranging from farm legislation to food safety concerns. Government officials, business leaders and commodity analysts will assess the outlook for 2002 and beyond, and noted economist Larry Chimerine will discuss U.S. and global economic prospects.

Focus sessions featuring rural innovators will highlight trends in bio-energy, contract negotiation, rural development and other areas. To stretch your planning horizon, USDA will release new 10-year commodity projections.

Visit the Forum home page for complete program details and online registration.

Register Today! www.usda.gov/oce (202) 314-3451