

Milk Production

Released March 15, 2002, by the National Agricultural Statistics Service (NASS), Agricultural Statistics Board, U.S. Department of Agriculture. For information on "Milk Production" call Ty Kalaus at 202-690-3236, office hours 7:00 a.m. to 4:30 p.m. ET.

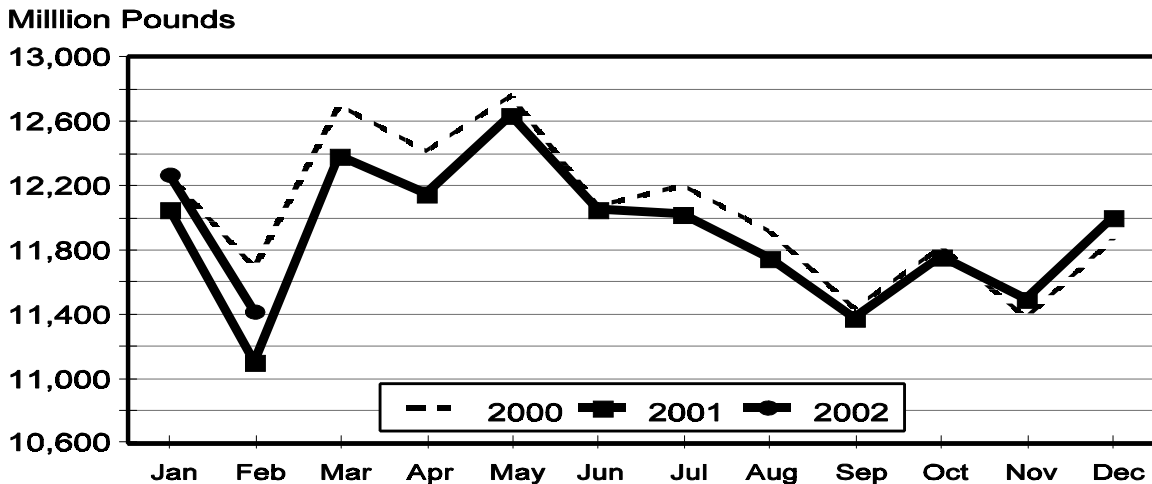
February Milk Production Up 2.8 Percent

Milk production in the 20 major States during February totaled 11.4 billion pounds, up 2.8 percent from February 2001. January revised production, at 12.3 billion pounds, was up 1.8 percent from January 2001. The January revision represented an increase of 1 million pounds from last month's preliminary production estimate.

Production per cow in the 20 major States averaged 1,474 pounds for February, 43 pounds above February 2001.

The number of milk cows on farms in the 20 major States was 7.75 million head, 18,000 head less than February 2001, but 1,000 head more than January 2002.

Monthly Milk Production 20 States



Milk Cows and Production: By Quarter, United States, 2001-2002 ¹

Quarter	Milk Cows ²		Milk Per Cow ³		Milk Production ³		
	2001	2002	2001	2002	2001	2002	Change From 2001
	<i>1,000 Head</i>	<i>1,000 Head</i>	<i>Pounds</i>	<i>Pounds</i>	<i>Million Pounds</i>	<i>Million Pounds</i>	<i>Percent</i>
Jan-Mar	9,143		4,514		41,267		
Apr-Jun	9,114		4,683		42,681		
Jul-Sep	9,098		4,459		40,570		
Oct-Dec	9,105		4,483		40,818		
Annual	9,115		18,139		165,336		

¹ May not add due to rounding.

² Includes dry cows, excludes heifers not yet fresh.

³ Excludes milk sucked by calves.

Milk Cows and Production: By Month, 20 Selected States, 2001-2002 ¹

Month	Milk Cows ²		Milk Per Cow ³		Milk Production ³		
	2001	2002	2001	2002	2001	2002	Change From 2001
	<i>1,000 Head</i>	<i>1,000 Head</i>	<i>Pounds</i>	<i>Pounds</i>	<i>Million Pounds</i>	<i>Million Pounds</i>	<i>Percent</i>
Jan	7,784	7,745	1,549	1,585	12,059	12,272	1.8
Feb	7,764	7,746	1,431	1,474	11,108	11,421	2.8
Mar	7,743		1,599		12,384		
Apr	7,740		1,571		12,156		
May	7,749		1,632		12,647		
Jun	7,751		1,555		12,052		
Jul	7,746		1,552		12,025		
Aug	7,735		1,520		11,754		
Sep	7,730		1,472		11,376		
Oct	7,726		1,522		11,756		
Nov	7,739		1,485		11,492		
Dec	7,750		1,549		12,008		
Annual	7,746		18,438		142,817		

¹ 2002 revised.

² Includes dry cows, excludes heifers not yet fresh.

³ Excludes milk sucked by calves.

Estimated Milk Cows and Production: By Month, United States, 2001-2002 ¹

Month	Milk Cows ²		Milk Per Cow ³		Milk Production ³		
	2001	2002	2001	2002	2001	2002	Change From 2001
	<i>1,000 Head</i>	<i>1,000 Head</i>	<i>Pounds</i>	<i>Pounds</i>	<i>Million Pounds</i>	<i>Million Pounds</i>	<i>Percent</i>
Jan	9,169	9,116	1,527	1,563	13,998	14,245	1.8
Feb	9,143	9,117	1,410	1,454	12,894	13,257	2.8
Mar	9,117		1,577		14,375		
Apr	9,110		1,545		14,078		
May	9,116		1,607		14,646		
Jun	9,117		1,531		13,957		
Jul	9,109		1,523		13,877		
Aug	9,096		1,491		13,564		
Sep	9,088		1,445		13,129		
Oct	9,086		1,498		13,611		
Nov	9,106		1,461		13,305		
Dec	9,122		1,524		13,902		
Annual	9,115		18,139		165,336		

¹ 2002 revised.

² Includes dry cows, excludes heifers not yet fresh.

³ Excludes milk sucked by calves.

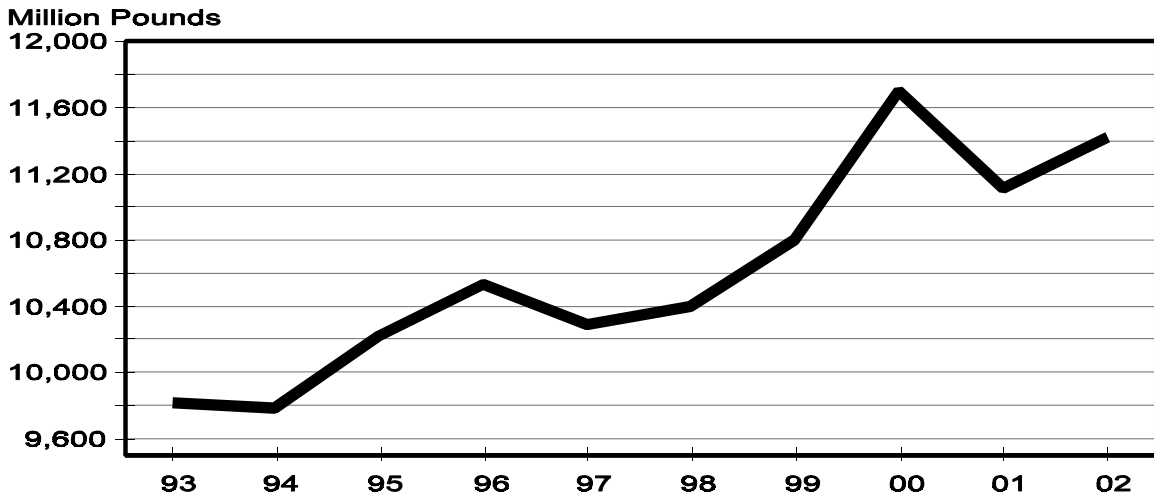
Milk Cows and Production: By State, February 2001-2002

State	Milk Cows ¹		Milk Per Cow ²		Milk Production ²		
	2001	2002	2001	2002	2001	2002	Change From 2001
	<i>1,000 Head</i>	<i>1,000 Head</i>	<i>Pounds</i>	<i>Pounds</i>	<i>Million Pounds</i>	<i>Million Pounds</i>	<i>Percent</i>
AZ	140	140	1,690	1,795	237	251	5.9
CA	1,568	1,628	1,615	1,630	2,532	2,654	4.8
FL	155	152	1,380	1,360	214	207	-3.3
ID	357	382	1,580	1,590	564	607	7.6
IL	117	115	1,380	1,440	161	166	3.1
IN	151	152	1,295	1,320	196	201	2.6
IA	215	208	1,410	1,430	303	297	-2.0
KY	128	123	1,040	1,100	133	135	1.5
MI	303	294	1,475	1,550	447	456	2.0
MN	520	495	1,385	1,385	720	686	-4.7
MO	148	139	1,070	1,150	158	160	1.3
NM	261	290	1,550	1,610	405	467	15.3
NY	670	675	1,320	1,390	884	938	6.1
OH	263	261	1,320	1,380	347	360	3.7
PA	602	583	1,420	1,460	855	851	-0.5
TX	338	310	1,285	1,395	434	432	-0.5
VT	153	154	1,330	1,375	203	212	4.4
VA	118	120	1,280	1,290	151	155	2.6
WA	247	247	1,680	1,735	415	429	3.4
WI	1,310	1,278	1,335	1,375	1,749	1,757	0.5
20-State Total	7,764	7,746	1,431	1,474	11,108	11,421	2.8

¹ Includes dry cows, excludes heifers not yet fresh.

² Excludes milk sucked by calves.

**February Milk Production, 1993-2002
20 States**



Milk Cows and Production: By State, January 2001-2002 ¹

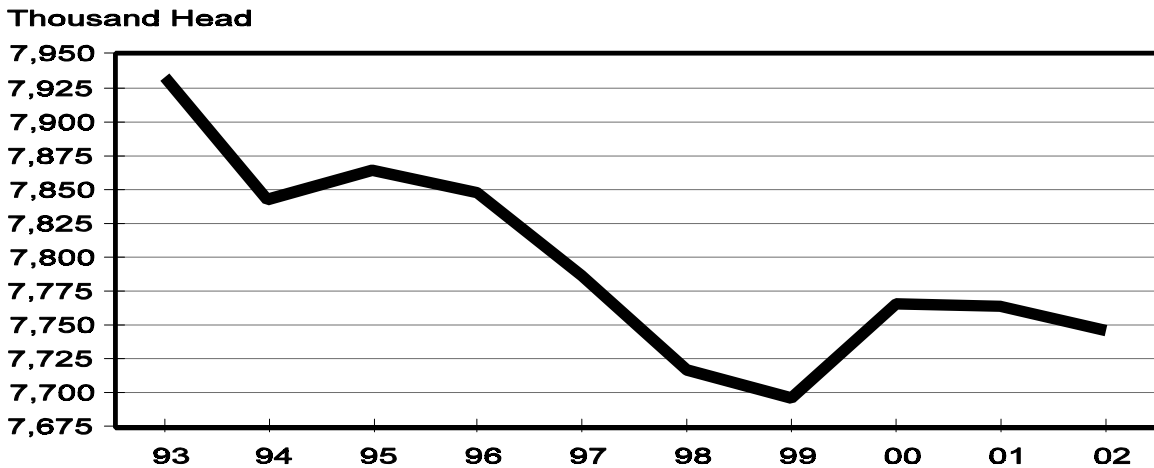
State	Milk Cows ²		Milk per Cow ³		Milk Production ³		
	2001	2002	2001	2002	2001	2002	Change From 2001
	<i>1,000 Head</i>	<i>1,000 Head</i>	<i>Pounds</i>	<i>Pounds</i>	<i>Million Pounds</i>	<i>Million Pounds</i>	<i>Percent</i>
AZ	140	140	1,825	1,835	256	257	0.4
CA	1,563	1,622	1,760	1,750	2,751	2,839	3.2
FL	155	152	1,440	1,410	223	214	-4.0
ID	356	380	1,740	1,750	619	665	7.4
IL	118	115	1,470	1,550	173	178	2.9
IN	151	153	1,455	1,430	220	219	-0.5
IA	215	206	1,525	1,560	328	321	-2.1
KY	130	124	1,090	1,160	142	144	1.4
MI	303	296	1,590	1,655	482	490	1.7
MN	520	495	1,520	1,515	790	750	-5.1
MO	149	140	1,150	1,210	171	169	-1.2
NM	261	290	1,680	1,740	438	505	15.3
NY	670	675	1,450	1,510	972	1,019	4.8
OH	264	260	1,340	1,470	354	382	7.9
PA	607	587	1,520	1,570	923	922	-0.1
TX	341	310	1,365	1,485	465	460	-1.1
VT	154	154	1,450	1,510	223	233	4.5
VA	118	120	1,380	1,390	163	167	2.5
WA	247	247	1,845	1,880	456	464	1.8
WI	1,322	1,279	1,445	1,465	1,910	1,874	-1.9
20-State Total	7,784	7,745	1,549	1,585	12,059	12,272	1.8

¹ 2002 revised.

² Includes dry cows, excludes heifers not yet fresh.

³ Excludes milk sucked by calves.

**February Milk Cows, 1993-2002
20 States**



Reliability Statement

Survey Procedures: Primary data used to determine these estimates were obtained from a sample of producers. Individual States maintain a list of all known milk producers and information on the size of their herd. States use all known sources of producers to ensure that their lists are as complete as possible. Generally, all large producers and a sample of small producers are included in the survey. Questionnaires are mailed to producers near the end of the month to obtain data for the first day of the month. Additional reports are obtained by telephone, as needed, to supplement the mail response.

Estimation Procedures: State offices prepare these estimates using survey indications, historic trends, and any available administrative data. Individual State estimates are reviewed by the Agricultural Statistics Board for reasonableness.

Revision Policy: Milk production, rate per cow, and number of cows are subject to revision the following month for monthly States or the following quarter for the quarterly States. Normally, Federal Market Order sales are the main basis for revisions. However, data for all orders are not available in time for this revision. Estimates are again subject to revisions in February each year based on additional administrative data. In the event that additional changes are necessary, a third revision is possible in February the following year. Estimates are again reviewed after data from the five-year Census of Agriculture are available. No revisions are made after that date.

Reliability: Since all operations with dairy animals are not included in the sample, survey estimates are subject to sampling variability. Survey results are also subject to non-sampling errors such as omissions, duplications, and mistakes in reporting, recording, and processing the data. The effects of these errors cannot be measured directly. They are minimized through rigid quality controls in the data collection process and through a careful review of all reported data for consistency and reasonableness.

To assist users in evaluating the reliability of the estimates in this report, the "Root Mean Square Error" is shown for selected items on the next page. The "Root Mean Square Error" is a statistical measure based on past performance and is computed using the differences between first and final estimates. The "Root Mean Square Error" for milk cow inventory estimates over the past 10 October-December quarters is 1.1 percent. This means that chances are 2 out of 3 that the final October-December estimate will not be above or below the current estimate of 9.11 million head by more than 1.1 percent. Chances are 9 out of 10 that the difference will not exceed 2.0 percent.

Reliability of October-December Milk Estimates ¹

Item	Root Mean Square Error	90% Confidence Level		Difference Between First and Latest Estimates			Quarters	
				Average	Smallest	Largest	First Above Latest	First Below Latest
				<i>Million Pounds</i>	<i>Million Pounds</i>	<i>Million Pounds</i>	<i>Number</i>	<i>Number</i>
Milk Production	<i>Percent</i> 0.5	<i>Percent</i> 0.9	<i>Million Pounds</i> 367	<i>Million Pounds</i> 153	<i>Million Pounds</i> 1	<i>Million Pounds</i> 385	<i>Number</i> 9	<i>Number</i> 1
All Milk Cows	<i>Percent</i> 1.1	<i>Percent</i> 2.0	<i>1,000 Head</i> 182	<i>1,000 Head</i> 79	<i>1,000 Head</i> 2	<i>1,000 Head</i> 195	<i>Number</i> 9	<i>Number</i> 1

¹ Based on records for the past 10 October-December quarters.

The next "Milk Production" report will be released at 3 p.m. ET on April 17, 2002.

The United States Department of Agriculture (USDA) prohibits discrimination in all its programs on the basis of race, color, national origin, gender, religion, age, disability, political beliefs, sexual orientation, and marital or family status. (Not all prohibited bases apply to all programs.) Persons with disabilities who require alternative means for communication of program information (braille, large print, audiotape, etc.) should contact the USDA's TARGET Center at 202-720-2600 (voice and TDD).

To file a complaint of discrimination, write USDA, Director, Office of Civil Rights, Room 326-W, Whitten Building, 1400 Independence Avenue, SW, Washington, D.C., 20250-9410, or call 202-720-5964 (voice or TDD). USDA is an equal opportunity provider and employer.

ACCESS TO REPORTS!!

For your convenience, there are several ways to obtain NASS reports, data products, and services:

INTERNET ACCESS

All NASS reports are available free of charge on the worldwide Internet. For access, connect to the Internet and go to the NASS Home Page at: <http://www.usda.gov/nass/>. Select "Today's Reports" or Publications and then Reports by Calendar or Publications and then Search, by Title or Subject.

E-MAIL SUBSCRIPTION

There are two options for subscribing via e-mail. All NASS reports are available by subscription free of charge direct to your e-mail address. 1) Starting with the NASS Home Page at <http://www.usda.gov/nass/>, click on **Publications**, then click on the **Subscribe by E-mail** button which takes you to the page describing e-mail delivery of reports. Finally, click on **Go to the Subscription Page** and follow the instructions. 2) If you do NOT have Internet access, send an e-mail message to: usda-reports@usda.mannlib.cornell.edu. In the body of the message type the word: **list**.

AUTOFAX ACCESS

NASSFax service is available for some reports from your fax machine. Please call 202-720-2000, using the handset attached to your fax. Respond to the voice prompts. Document 0411 is a list of available reports.

PRINTED REPORTS OR DATA PRODUCTS

CALL OUR TOLL-FREE ORDER DESK: 800-999-6779 (U.S. and Canada)
Other areas, please call 703-605-6220 FAX: 703-605-6900
(Visa, MasterCard, check, or money order acceptable for payment.)

ASSISTANCE

For **assistance** with general agricultural statistics or further information about NASS or its products or services, contact the **Agricultural Statistics Hotline** at **800-727-9540**, 7:30 a.m. to 4:00 p.m. ET, or e-mail: nass@nass.usda.gov.
