

Released April 17, 2002, by the National Agricultural Statistics Service (NASS), Agricultural Statistics Board, U.S. Department of Agriculture. For information on "Milk Production" call Ty Kalaus at 202-690-3236, office hours 7:00 a.m. to 4:30 p.m. ET.

March Milk Production Up 3.2 Percent

Milk production in the 20 major States during March totaled 12.8 billion pounds, up 3.2 percent from March 2001. February revised production, at 11.4 billion pounds, was up 2.3 percent from February 2001. The February revision represented a decrease of 0.5 percent or 56 million pounds from last month's preliminary production estimate.

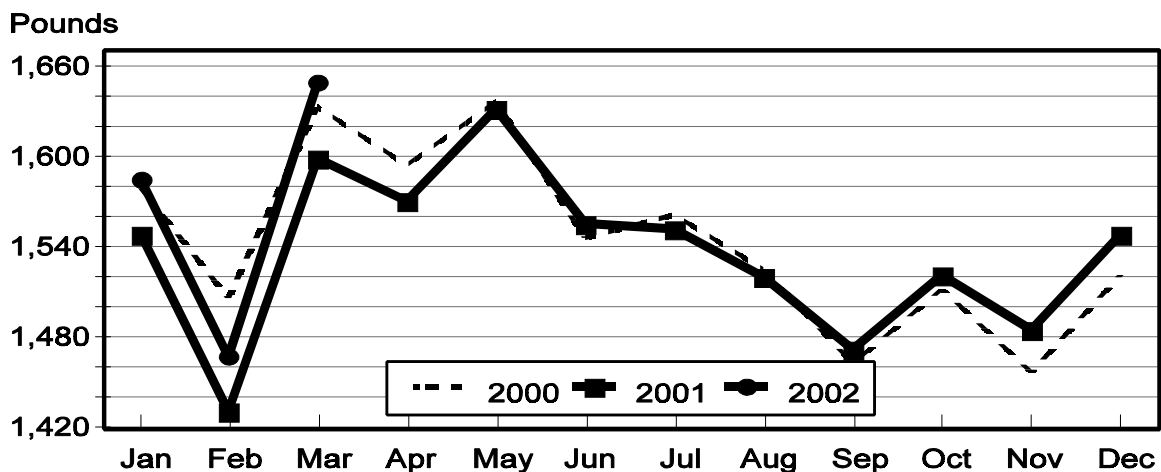
Production per cow in the 20 major States averaged 1,650 pounds for March, 51 pounds above March 2001.

The number of cows on farms in the 20 major States was 7.75 million head, 2,000 head more than March 2001, and 1,000 head more than February 2002.

January-March Milk Production Up 2.4 Percent

The quarterly production of milk for the U.S. was 42.3 billion pounds, 2.4 percent above the January-March period last year. The average number of milk cows in the U.S. during the January-March quarter was 9.11 million head, 38,000 head less than the same period last year.

Monthly Milk per Cow 20 States



Milk Cows and Production: By Quarter, United States, 2001-2002 ¹

Quarter	Milk Cows ²		Milk Per Cow ³		Milk Production ³		
	2001	2002	2001	2002	2001	2002	Change From 2001
	<i>1,000 Head</i>	<i>1,000 Head</i>	<i>Pounds</i>	<i>Pounds</i>	<i>Million Pounds</i>	<i>Million Pounds</i>	<i>Percent</i>
Jan-Mar	9,143	9,105	4,514	4,643	41,267	42,271	2.4
Apr-Jun	9,114		4,683		42,681		
Jul-Sep	9,098		4,459		40,570		
Oct-Dec	9,105		4,483		40,818		
Annual	9,115		18,139		165,336		

¹ May not add due to rounding.

² Includes dry cows, excludes heifers not yet fresh.

³ Excludes milk sucked by calves.

Milk Cows and Production: By Month, 20 Selected States, 2001-2002 ¹

Month	Milk Cows ²		Milk Per Cow ³		Milk Production ³		
	2001	2002	2001	2002	2001	2002	Change From 2001
	<i>1,000 Head</i>	<i>1,000 Head</i>	<i>Pounds</i>	<i>Pounds</i>	<i>Million Pounds</i>	<i>Million Pounds</i>	<i>Percent</i>
Jan	7,784	7,745	1,549	1,585	12,059	12,272	1.8
Feb	7,764	7,744	1,431	1,468	11,108	11,365	2.3
Mar	7,743	7,745	1,599	1,650	12,384	12,778	3.2
Apr	7,740		1,571		12,156		
May	7,749		1,632		12,647		
Jun	7,751		1,555		12,052		
Jul	7,746		1,552		12,025		
Aug	7,735		1,520		11,754		
Sep	7,730		1,472		11,376		
Oct	7,726		1,522		11,756		
Nov	7,739		1,485		11,492		
Dec	7,750		1,549		12,008		
Annual	7,746		18,438		142,817		

¹ 2002 revised.

² Includes dry cows, excludes heifers not yet fresh.

³ Excludes milk sucked by calves.

Estimated Milk Cows and Production: By Month, United States, 2001-2002 ¹

Month	Milk Cows ²		Milk Per Cow ³		Milk Production ³		
	2001	2002	2001	2002	2001	2002	Change From 2001
	<i>1,000 Head</i>	<i>1,000 Head</i>	<i>Pounds</i>	<i>Pounds</i>	<i>Million Pounds</i>	<i>Million Pounds</i>	<i>Percent</i>
Jan	9,169	9,108	1,527	1,564	13,998	14,244	1.8
Feb	9,143	9,104	1,410	1,449	12,894	13,191	2.3
Mar	9,117	9,104	1,577	1,630	14,375	14,836	3.2
Apr	9,110		1,545		14,078		
May	9,116		1,607		14,646		
Jun	9,117		1,531		13,957		
Jul	9,109		1,523		13,877		
Aug	9,096		1,491		13,564		
Sep	9,088		1,445		13,129		
Oct	9,086		1,498		13,611		
Nov	9,106		1,461		13,305		
Dec	9,122		1,524		13,902		
Annual	9,115		18,139		165,336		

¹ 2002 revised.

² Includes dry cows, excludes heifers not yet fresh.

³ Excludes milk sucked by calves.

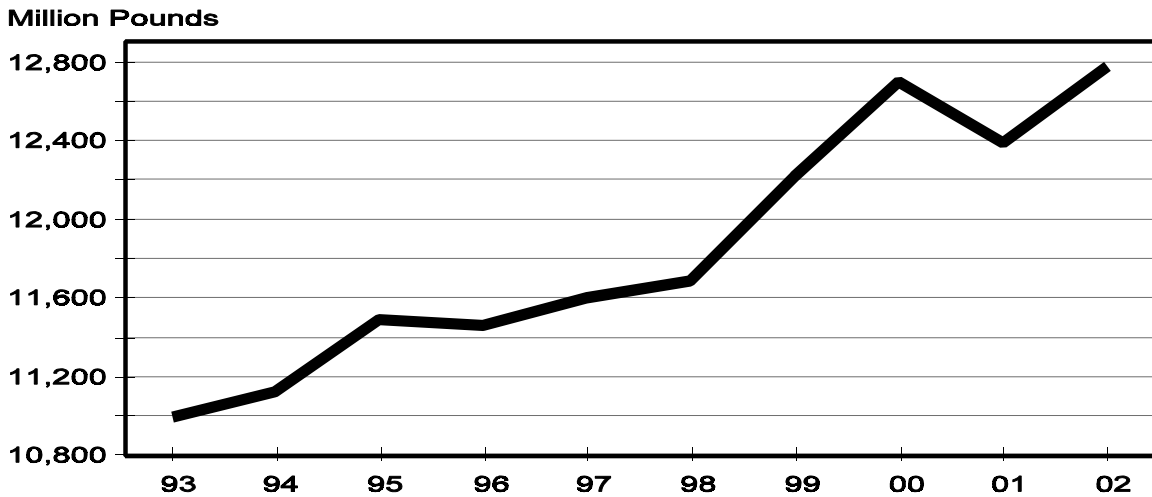
Milk Cows and Production: By State, March 2001-2002

State	Milk Cows ¹		Milk Per Cow ²		Milk Production ²		
	2001	2002	2001	2002	2001	2002	Change From 2001
	<i>1,000 Head</i>	<i>1,000 Head</i>	<i>Pounds</i>	<i>Pounds</i>	<i>Million Pounds</i>	<i>Million Pounds</i>	<i>Percent</i>
AZ	140	140	1,855	2,055	260	288	10.8
CA	1,572	1,631	1,790	1,825	2,814	2,977	5.8
FL	154	152	1,580	1,540	243	234	-3.7
ID	358	382	1,770	1,780	634	680	7.3
IL	117	115	1,580	1,620	185	186	0.5
IN	151	152	1,455	1,470	220	223	1.4
IA	213	209	1,570	1,615	334	338	1.2
KY	127	123	1,180	1,245	150	153	2.0
MI	304	295	1,660	1,730	505	510	1.0
MN	515	490	1,545	1,565	796	767	-3.6
MO	148	138	1,200	1,335	178	184	3.4
NM	261	293	1,760	1,830	459	536	16.8
NY	670	678	1,490	1,550	998	1,051	5.3
OH	262	260	1,410	1,540	369	400	8.4
PA	600	581	1,580	1,630	948	947	-0.1
TX	335	310	1,460	1,600	489	496	1.4
VT	152	153	1,490	1,525	226	233	3.1
VA	118	120	1,425	1,440	168	173	3.0
WA	246	247	1,885	1,925	464	475	2.4
WI	1,300	1,276	1,495	1,510	1,944	1,927	-0.9
20-State Total	7,743	7,745	1,599	1,650	12,384	12,778	3.2

¹ Includes dry cows, excludes heifers not yet fresh.

² Excludes milk sucked by calves.

**March Milk Production, 1993-2002
20 States**



Milk Cows and Production: By State, February 2001-2002 ¹

State	Milk Cows ²		Milk per Cow ³		Milk Production ³		
	2001	2002	2001	2002	2001	2002	Change From 2001
	<i>1,000 Head</i>	<i>1,000 Head</i>	<i>Pounds</i>	<i>Pounds</i>	<i>Million Pounds</i>	<i>Million Pounds</i>	<i>Percent</i>
AZ	140	140	1,690	1,795	237	251	5.9
CA	1,568	1,626	1,615	1,620	2,532	2,634	4.0
FL	155	152	1,380	1,335	214	203	-5.1
ID	357	382	1,580	1,580	564	604	7.1
IL	117	115	1,380	1,440	161	166	3.1
IN	151	152	1,295	1,320	196	201	2.6
IA	215	208	1,410	1,430	303	297	-2.0
KY	128	123	1,040	1,100	133	135	1.5
MI	303	294	1,475	1,550	447	456	2.0
MN	520	495	1,385	1,385	720	686	-4.7
MO	148	139	1,070	1,150	158	160	1.3
NM	261	290	1,550	1,610	405	467	15.3
NY	670	676	1,320	1,400	884	946	7.0
OH	263	260	1,320	1,365	347	355	2.3
PA	602	583	1,420	1,460	855	851	-0.5
TX	338	310	1,285	1,395	434	432	-0.5
VT	153	154	1,330	1,375	203	212	4.4
VA	118	120	1,280	1,290	151	155	2.6
WA	247	247	1,680	1,735	415	429	3.4
WI	1,310	1,278	1,335	1,350	1,749	1,725	-1.4
20-State Total	7,764	7,744	1,431	1,468	11,108	11,365	2.3

¹ 2002 revised.

² Includes dry cows, excludes heifers not yet fresh.

³ Excludes milk sucked by calves.

**March Milk Cows, 1993-2002
20 States**



**Milk Cows and Production: By State and United States,
Revised October-December, 2000-2001**

State	Oct-Dec Milk Cows ¹		Oct-Dec Milk Production ²		Change From 2000
	2000	2001	2000	2001	
	<i>1,000 Head</i>	<i>1,000 Head</i>	<i>Million Pounds</i>	<i>Million Pounds</i>	<i>Percent</i>
AL	23	21	78	70	-10.3
AK	1.0	1.2	3.41	3.72	9.1
AZ	140	140	695	708	1.9
AR	37	33	106	96	-9.4
CA	1,552	1,614	7,979	8,343	4.6
CO	90	92	483	501	3.7
CT	26	24	115	110	-4.3
DE	9.0	9.0	34.0	37.0	8.8
FL	156	152	569	549	-3.5
GA	86	86	337	342	1.5
HI	7.6	7.4	25.9	23.2	-10.4
ID	355	373	1,830	1,976	8.0
IL	118	115	503	487	-3.2
IN	150	155	627	637	1.6
IA	215	206	953	930	-2.4
KS	94	94	390	425	9.0
KY	131	125	409	402	-1.7
LA	57	54	156	145	-7.1
ME	38	38	159	162	1.9
MD	82	81	324	320	-1.2
MA	21	21	87	88	1.1
MI	300	300	1,410	1,444	2.4
MN	527	500	2,279	2,111	-7.4
MS	36	34	123	113	-8.1
MO	151	141	534	466	-12.7
MT	19	19	85	87	2.4
NE	77	69	319	273	-14.4
NV	25	25	120	120	
NH	18	18	75	80	6.7
NJ	16	14	58	56	-3.4
NM	261	280	1,289	1,434	11.2
NY	672	674	2,824	2,932	3.8
NC	69	66	288	285	-1.0
ND	47	44	160	154	-3.8
OH	264	257	1,080	1,080	
OK	91	88	314	316	0.6
OR	90	105	410	463	12.9
PA	616	595	2,687	2,676	-0.4
RI	1.6	1.4	6.2	5.5	-11.3
SC	22	20	89	88	-1.1
SD	101	98	409	393	-3.9
TN	94	89	340	320	-5.9
TX	345	312	1,314	1,218	-7.3
UT	95	93	405	408	0.7
VT	155	154	646	667	3.3
VA	119	119	461	464	0.7
WA	248	247	1,347	1,355	0.6
WV	17	16	64	61	-4.7
WI	1,333	1,280	5,627	5,377	-4.4
WY	5.0	4.5	17.0	16.2	-4.7
US ³	9,203	9,105	40,644	40,818	0.4

¹ Includes dry cows, excludes heifers not yet fresh.

² Excludes milk sucked by calves.

³ May not add due to rounding.

**Milk Cows and Production: By State and United States,
Preliminary January-March, 2001-2002**

State	Jan-Mar Milk Cows ¹		Jan-Mar Milk Production ²		Change From 2001
	2001	2002	2001	2002	
	<i>1,000 Head</i>	<i>1,000 Head</i>	<i>Million Pounds</i>	<i>Million Pounds</i>	<i>Percent</i>
AL	22	20	86	79	-8.1
AK	1.1	1.2	3.41	4.02	17.9
AZ	140	140	753	796	5.7
AR	36	33	117	107	-8.5
CA	1,568	1,626	8,097	8,450	4.4
CO	90	95	483	513	6.2
CT	26	24	120	116	-3.3
DE	9.0	9.0	39.0	38.3	-1.8
FL	155	152	680	651	-4.3
GA	86	85	388	395	1.8
HI	7.6	6.8	27.7	24.1	-13.0
ID	357	381	1,817	1,949	7.3
IL	117	115	519	530	2.1
IN	151	152	636	643	1.1
IA	214	208	965	956	-0.9
KS	94	99	400	470	17.5
KY	128	123	425	432	1.6
LA	55	52	184	172	-6.5
ME	37	38	159	164	3.1
MD	82	81	327	333	1.8
MA	21	20	89	90	1.1
MI	303	295	1,434	1,456	1.5
MN	518	493	2,306	2,203	-4.5
MS	36	34	145	139	-4.1
MO	148	139	507	513	1.2
MT	19	18	84	84	
NE	75	68	306	283	-7.5
NV	25	25	119	118	-0.8
NH	18	18	80	84	5.0
NJ	15	13	60	56	-6.7
NM	261	291	1,302	1,508	15.8
NY	670	676	2,854	3,016	5.7
NC	68	65	299	298	-0.3
ND	46	41	156	148	-5.1
OH	263	260	1,070	1,137	6.3
OK	90	88	326	328	0.6
OR	90	105	393	480	22.1
PA	603	584	2,726	2,720	-0.2
RI	1.4	1.4	5.9	5.8	-1.7
SC	22	20	101	100	-1.0
SD	100	98	393	402	2.3
TN	94	90	355	350	-1.4
TX	338	310	1,388	1,388	
UT	93	92	394	397	0.8
VT	153	154	652	678	4.0
VA	118	120	482	495	2.7
WA	247	247	1,335	1,368	2.5
WV	16	16	61	62	1.6
WI	1,311	1,278	5,603	5,526	-1.4
WY	4.6	4.5	15.2	15.8	3.9
US ³	9,143	9,105	41,267	42,271	2.4

¹ Includes dry cows, excludes heifers not yet fresh.

² Excludes milk sucked by calves.

³ May not add due to rounding.

Reliability Statement

Survey Procedures: Primary data used to determine these estimates were obtained from a sample of producers. Individual States maintain a list of all known milk producers and information on the size of their herd. States use all known sources of producers to ensure that their lists are as complete as possible. Generally, all large producers and a sample of small producers are included in the survey. Questionnaires are mailed to producers near the end of the month to obtain data for the first day of the month. Additional reports are obtained by telephone, as needed, to supplement the mail response.

Estimation Procedures: State offices prepare these estimates using survey indications, historic trends, and any available administrative data. Individual State estimates are reviewed by the Agricultural Statistics Board for reasonableness.

Revision Policy: Milk production, rate per cow, and number of cows are subject to revision the following month for monthly States or the following quarter for the quarterly States. Normally, Federal Market Order sales are the main basis for revisions. However, data for all orders are not available in time for this revision. Estimates are again subject to revisions in February each year based on additional administrative data. In the event that additional changes are necessary, a third revision is possible in February the following year. Estimates are again reviewed after data from the five-year Census of Agriculture are available. No revisions are made after that date.

Reliability: Since all operations with dairy animals are not included in the sample, survey estimates are subject to sampling variability. Survey results are also subject to non-sampling errors such as omissions, duplications, and mistakes in reporting, recording, and processing the data. The effects of these errors cannot be measured directly. They are minimized through rigid quality controls in the data collection process and through a careful review of all reported data for consistency and reasonableness.

To assist users in evaluating the reliability of the estimates in this report, the "Root Mean Square Error" is shown for selected items on the next page. The "Root Mean Square Error" is a statistical measure based on past performance and is computed using the differences between first and final estimates. The "Root Mean Square Error" for milk cow inventory estimates over the past 10 January-March quarters is 0.8 percent. This means that chances are 2 out of 3 that the final January-March estimate will not be above or below the current estimate of 9.11 million head by more than 0.8 percent. Chances are 9 out of 10 that the difference will not exceed 1.5 percent.

Reliability of January-March Milk Estimates ¹

Item	Root Mean Square Error	90% Confidence Level		Difference Between First and Latest Estimates			Quarters	
				Average	Smallest	Largest	First Above Latest	First Below Latest
				<i>Million Pounds</i>	<i>Million Pounds</i>	<i>Million Pounds</i>	<i>Number</i>	<i>Number</i>
Milk Production	<i>Percent</i> 0.4	<i>Percent</i> 0.7	<i>Million Pounds</i> 296	<i>Million Pounds</i> 129	<i>Million Pounds</i> 18	<i>Million Pounds</i> 329	<i>Number</i> 7	<i>Number</i> 3
All Milk Cows	<i>Percent</i> 0.8	<i>Percent</i> 1.5	<i>1,000 Head</i> 137	<i>1,000 Head</i> 52	<i>1,000 Head</i> 0	<i>1,000 Head</i> 145	<i>Number</i> 7	<i>Number</i> 2

¹ Based on records for the past 10 January-March quarters.

The next "Milk Production" report will be released at 3 p.m. ET on May 16, 2002.

The United States Department of Agriculture (USDA) prohibits discrimination in all its programs on the basis of race, color, national origin, gender, religion, age, disability, political beliefs, sexual orientation, and marital or family status. (Not all prohibited bases apply to all programs.) Persons with disabilities who require alternative means for communication of program information (braille, large print, audiotape, etc.) should contact the USDA's TARGET Center at 202-720-2600 (voice and TDD).

To file a complaint of discrimination, write USDA, Director, Office of Civil Rights, Room 326-W, Whitten Building, 1400 Independence Avenue, SW, Washington, D.C., 20250-9410, or call 202-720-5964 (voice or TDD). USDA is an equal opportunity provider and employer.

ACCESS TO REPORTS!!

For your convenience, there are several ways to obtain NASS reports, data products, and services:

INTERNET ACCESS

All NASS reports are available free of charge on the worldwide Internet. For access, connect to the Internet and go to the NASS Home Page at: <http://www.usda.gov/nass/>. Select "Today's Reports" or Publications and then Reports by Calendar or Publications and then Search, by Title or Subject.

E-MAIL SUBSCRIPTION

There are two options for subscribing via e-mail. All NASS reports are available by subscription free of charge direct to your e-mail address. 1) Starting with the NASS Home Page at <http://www.usda.gov/nass/>, click on **Publications**, then click on the **Subscribe by E-mail** button which takes you to the page describing e-mail delivery of reports. Finally, click on **Go to the Subscription Page** and follow the instructions. 2) If you do NOT have Internet access, send an e-mail message to: usda-reports@usda.mannlib.cornell.edu. In the body of the message type the word: **list**.

AUTOFAX ACCESS

NASSFax service is available for some reports from your fax machine. Please call 202-720-2000, using the handset attached to your fax. Respond to the voice prompts. Document 0411 is a list of available reports.

PRINTED REPORTS OR DATA PRODUCTS

CALL OUR TOLL-FREE ORDER DESK: 800-999-6779 (U.S. and Canada)
Other areas, please call 703-605-6220 FAX: 703-605-6900
(Visa, MasterCard, check, or money order acceptable for payment.)

ASSISTANCE

For **assistance** with general agricultural statistics or further information about NASS or its products or services, contact the **Agricultural Statistics Hotline** at **800-727-9540**, 7:30 a.m. to 4:00 p.m. ET, or e-mail: nass@nass.usda.gov.
