

Released May 16, 2002, by the National Agricultural Statistics Service (NASS), Agricultural Statistics Board, U.S. Department of Agriculture. For information on "Milk Production" call Ty Kalas at 202-690-3236, office hours 7:00 a.m. to 4:30 p.m. ET.

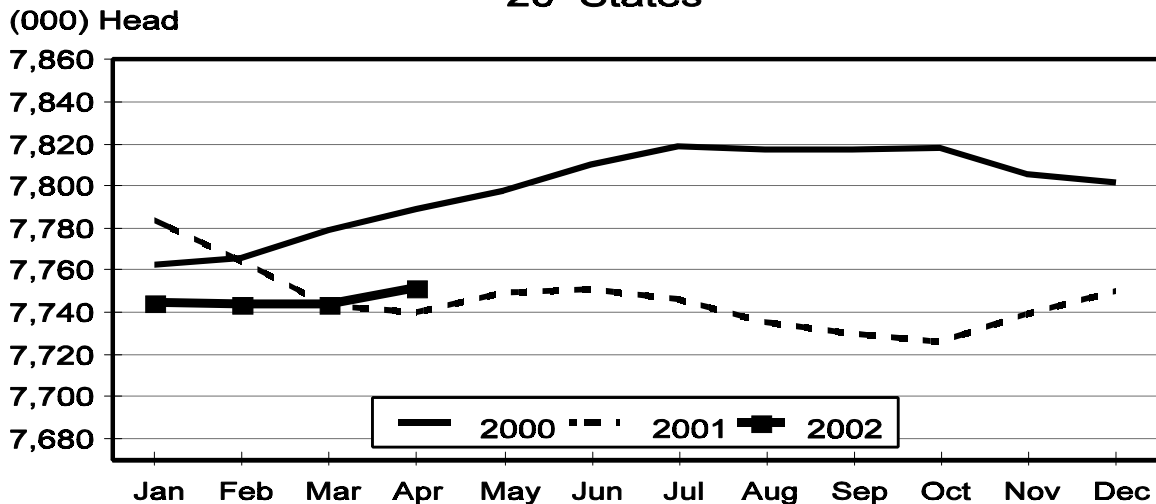
April Milk Production Up 2.9 Percent

Milk production in the 20 major States during April totaled 12.5 billion pounds, up 2.9 percent from April 2001. March revised production, at 12.8 billion pounds, was up 3.1 percent from March 2001. The March revision represented a decrease of 7 million pounds from last month's preliminary production estimate.

Production per cow in the 20 major States averaged 1,614 pounds for April, 43 pounds above April 2001.

The number of milk cows on farms in the 20 major States was 7.75 million head, 12,000 head more than April 2001, and 8,000 head more than March 2002.

Monthly Milk Cows 20 States



Milk Cows and Production: By Quarter, United States, 2001-2002 ¹

Quarter	Milk Cows ²		Milk Per Cow ³		Milk Production ³		
	2001	2002	2001	2002	2001	2002	Change From 2001
	<i>1,000 Head</i>	<i>1,000 Head</i>	<i>Pounds</i>	<i>Pounds</i>	<i>Million Pounds</i>	<i>Million Pounds</i>	<i>Percent</i>
Jan-Mar	9,143	9,105	4,514	4,642	41,267	42,264	2.4
Apr-Jun	9,114		4,683		42,681		
Jul-Sep	9,098		4,459		40,570		
Oct-Dec	9,105		4,483		40,818		
Annual	9,115		18,139		165,336		

¹ May not add due to rounding.

² Includes dry cows, excludes heifers not yet fresh.

³ Excludes milk sucked by calves.

Milk Cows and Production: By Month, 20 Selected States, 2001-2002 ¹

Month	Milk Cows ²		Milk Per Cow ³		Milk Production ³		
	2001	2002	2001	2002	2001	2002	Change From 2001
	<i>1,000 Head</i>	<i>1,000 Head</i>	<i>Pounds</i>	<i>Pounds</i>	<i>Million Pounds</i>	<i>Million Pounds</i>	<i>Percent</i>
Jan	7,784	7,745	1,549	1,585	12,059	12,272	1.8
Feb	7,764	7,744	1,431	1,468	11,108	11,365	2.3
Mar	7,743	7,744	1,599	1,649	12,384	12,771	3.1
Apr	7,740	7,752	1,571	1,614	12,156	12,513	2.9
May	7,749		1,632		12,647		
Jun	7,751		1,555		12,052		
Jul	7,746		1,552		12,025		
Aug	7,735		1,520		11,754		
Sep	7,730		1,472		11,376		
Oct	7,726		1,522		11,756		
Nov	7,739		1,485		11,492		
Dec	7,750		1,549		12,008		
Annual	7,746		18,438		142,817		

¹ 2002 revised.

² Includes dry cows, excludes heifers not yet fresh.

³ Excludes milk sucked by calves.

Estimated Milk Cows and Production: By Month, United States, 2001-2002 ¹

Month	Milk Cows ²		Milk Per Cow ³		Milk Production ³		
	2001	2002	2001	2002	2001	2002	Change From 2001
	<i>1,000 Head</i>	<i>1,000 Head</i>	<i>Pounds</i>	<i>Pounds</i>	<i>Million Pounds</i>	<i>Million Pounds</i>	<i>Percent</i>
Jan	9,169	9,108	1,527	1,564	13,998	14,246	1.8
Feb	9,143	9,104	1,410	1,449	12,894	13,194	2.3
Mar	9,117	9,104	1,577	1,628	14,375	14,824	3.1
Apr	9,110	9,115	1,545	1,590	14,078	14,491	2.9
May	9,116		1,607		14,646		
Jun	9,117		1,531		13,957		
Jul	9,109		1,523		13,877		
Aug	9,096		1,491		13,564		
Sep	9,088		1,445		13,129		
Oct	9,086		1,498		13,611		
Nov	9,106		1,461		13,305		
Dec	9,122		1,524		13,902		
Annual	9,115		18,139		165,336		

¹ 2002 revised.

² Includes dry cows, excludes heifers not yet fresh.

³ Excludes milk sucked by calves.

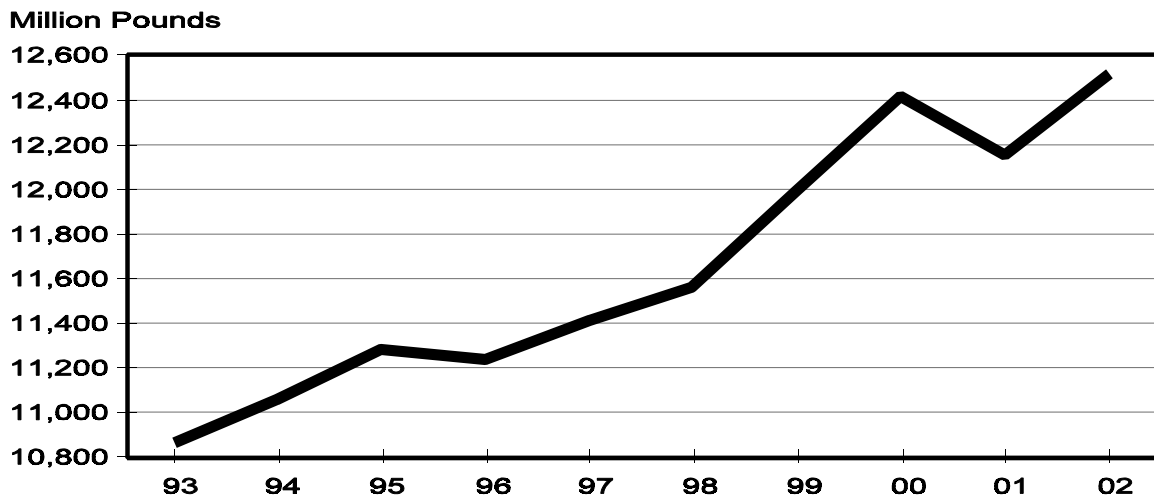
Milk Cows and Production: By State, April 2001-2002

State	Milk Cows ¹		Milk Per Cow ²		Milk Production ²		
	2001	2002	2001	2002	2001	2002	Change From 2001
	<i>1,000 Head</i>	<i>1,000 Head</i>	<i>Pounds</i>	<i>Pounds</i>	<i>Million Pounds</i>	<i>Million Pounds</i>	<i>Percent</i>
AZ	140	140	1,855	2,020	260	283	8.8
CA	1,576	1,636	1,770	1,790	2,790	2,928	4.9
FL	154	151	1,475	1,420	227	214	-5.7
ID	360	381	1,740	1,740	626	663	5.9
IL	117	115	1,555	1,610	182	185	1.6
IN	152	152	1,435	1,485	218	226	3.7
IA	212	209	1,545	1,585	328	331	0.9
KY	128	123	1,180	1,240	151	153	1.3
MI	304	296	1,620	1,675	492	496	0.8
MN	515	490	1,495	1,515	770	742	-3.6
MO	148	138	1,265	1,325	187	183	-2.1
NM	261	295	1,760	1,815	459	535	16.6
NY	670	679	1,450	1,500	972	1,019	4.8
OH	261	260	1,390	1,470	363	382	5.2
PA	599	581	1,540	1,600	922	930	0.9
TX	332	310	1,435	1,580	476	490	2.9
VT	152	154	1,455	1,495	221	230	4.1
VA	118	120	1,380	1,400	163	168	3.1
WA	246	247	1,860	1,895	458	468	2.2
WI	1,295	1,275	1,460	1,480	1,891	1,887	-0.2
20-State Total	7,740	7,752	1,571	1,614	12,156	12,513	2.9

¹ Includes dry cows, excludes heifers not yet fresh.

² Excludes milk sucked by calves.

**April Milk Production, 1993-2002
20 States**



Milk Cows and Production: By State, March 2001-2002 ¹

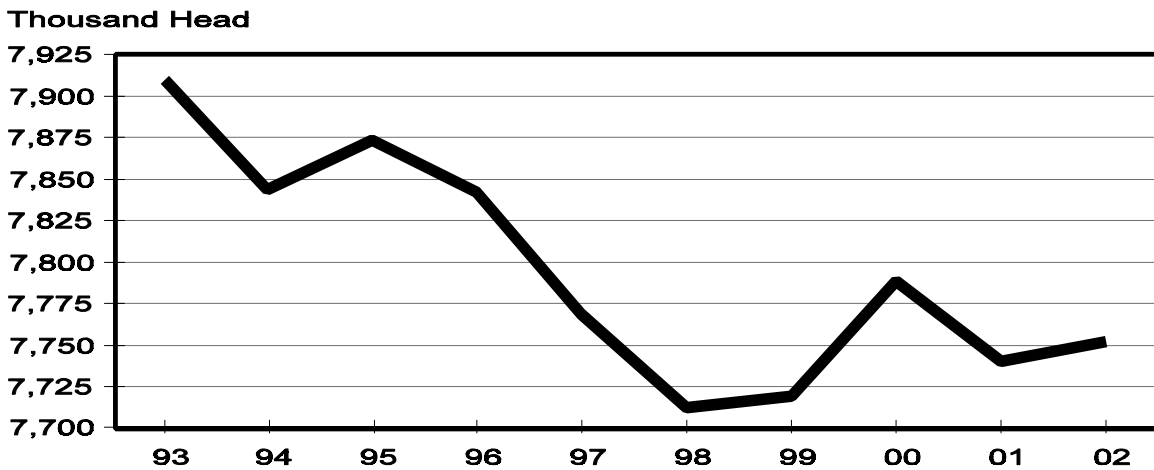
State	Milk Cows ²		Milk per Cow ³		Milk Production ³		
	2001	2002	2001	2002	2001	2002	Change From 2001
	<i>1,000 Head</i>	<i>1,000 Head</i>	<i>Pounds</i>	<i>Pounds</i>	<i>Million Pounds</i>	<i>Million Pounds</i>	<i>Percent</i>
AZ	140	140	1,855	2,055	260	288	10.8
CA	1,572	1,631	1,790	1,830	2,814	2,985	6.1
FL	154	151	1,580	1,505	243	227	-6.6
ID	358	381	1,770	1,760	634	671	5.8
IL	117	115	1,580	1,620	185	186	0.5
IN	151	152	1,455	1,490	220	226	2.7
IA	213	209	1,570	1,615	334	338	1.2
KY	127	123	1,180	1,245	150	153	2.0
MI	304	295	1,660	1,730	505	510	1.0
MN	515	490	1,545	1,560	796	764	-4.0
MO	148	138	1,200	1,335	178	184	3.4
NM	261	293	1,760	1,830	459	536	16.8
NY	670	678	1,490	1,560	998	1,058	6.0
OH	262	260	1,410	1,500	369	390	5.7
PA	600	581	1,580	1,630	948	947	-0.1
TX	335	310	1,460	1,600	489	496	1.4
VT	152	154	1,490	1,530	226	236	4.4
VA	118	120	1,425	1,450	168	174	3.6
WA	246	247	1,885	1,925	464	475	2.4
WI	1,300	1,276	1,495	1,510	1,944	1,927	-0.9
20-State Total	7,743	7,744	1,599	1,649	12,384	12,771	3.1

¹ 2002 revised.

² Includes dry cows, excludes heifers not yet fresh.

³ Excludes milk sucked by calves.

**April Milk Cows, 1993-2002
20 States**



Reliability Statement

Survey Procedures: Primary data used to determine these estimates were obtained from a sample of producers. Individual States maintain a list of all known milk producers and information on the size of their herd. States use all known sources of producers to ensure that their lists are as complete as possible. Generally, all large producers and a sample of small producers are included in the survey. Questionnaires are mailed to producers near the end of the month to obtain data for the first day of the month. Additional reports are obtained by telephone, as needed, to supplement the mail response.

Estimation Procedures: State offices prepare these estimates using survey indications, historic trends, and any available administrative data. Individual State estimates are reviewed by the Agricultural Statistics Board for reasonableness.

Revision Policy: Milk production, rate per cow, and number of cows are subject to revision the following month for monthly States or the following quarter for the quarterly States. Normally, Federal Market Order sales are the main basis for revisions. However, data for all orders are not available in time for this revision. Estimates are again subject to revisions in February each year based on additional administrative data. In the event that additional changes are necessary, a third revision is possible in February the following year. Estimates are again reviewed after data from the five-year Census of Agriculture are available. No revisions are made after that date.

Reliability: Since all operations with dairy animals are not included in the sample, survey estimates are subject to sampling variability. Survey results are also subject to non-sampling errors such as omissions, duplications, and mistakes in reporting, recording, and processing the data. The effects of these errors cannot be measured directly. They are minimized through rigid quality controls in the data collection process and through a careful review of all reported data for consistency and reasonableness.

To assist users in evaluating the reliability of the estimates in this report, the "Root Mean Square Error" is shown for selected items on the next page. The "Root Mean Square Error" is a statistical measure based on past performance and is computed using the differences between first and final estimates. The "Root Mean Square Error" for milk cow inventory estimates over the past 10 January-March quarters is 0.8 percent. This means that chances are 2 out of 3 that the final January-March estimate will not be above or below the current estimate of 9.11 million head by more than 0.8 percent. Chances are 9 out of 10 that the difference will not exceed 1.5 percent.

Reliability of January-March Milk Estimates ¹

Item	Root Mean Square Error	90% Confidence Level		Difference Between First and Latest Estimates			Quarters	
				Average	Smallest	Largest	First Above Latest	First Below Latest
				<i>Million Pounds</i>	<i>Million Pounds</i>	<i>Million Pounds</i>	<i>Number</i>	<i>Number</i>
Milk Production	<i>Percent</i> 0.4	<i>Percent</i> 0.7	<i>Million Pounds</i> 296	<i>Million Pounds</i> 129	<i>Million Pounds</i> 18	<i>Million Pounds</i> 329	<i>Number</i> 7	<i>Number</i> 3
All Milk Cows	<i>Percent</i> 0.8	<i>Percent</i> 1.5	<i>1,000 Head</i> 137	<i>1,000 Head</i> 52	<i>1,000 Head</i> 0	<i>1,000 Head</i> 145	<i>Number</i> 7	<i>Number</i> 2

¹ Based on records for the past 10 January-March quarters.

The next "Milk Production" report will be released at 3 p.m. ET on June 17, 2002.

The United States Department of Agriculture (USDA) prohibits discrimination in all its programs on the basis of race, color, national origin, gender, religion, age, disability, political beliefs, sexual orientation, and marital or family status. (Not all prohibited bases apply to all programs.) Persons with disabilities who require alternative means for communication of program information (braille, large print, audiotape, etc.) should contact the USDA's TARGET Center at 202-720-2600 (voice and TDD).

To file a complaint of discrimination, write USDA, Director, Office of Civil Rights, Room 326-W, Whitten Building, 1400 Independence Avenue, SW, Washington, D.C., 20250-9410, or call 202-720-5964 (voice or TDD). USDA is an equal opportunity provider and employer.

ACCESS TO REPORTS!!

For your convenience, there are several ways to obtain NASS reports, data products, and services:

INTERNET ACCESS

All NASS reports are available free of charge on the worldwide Internet. For access, connect to the Internet and go to the NASS Home Page at: <http://www.usda.gov/nass/>. Select "Today's Reports" or Publications and then Reports by Calendar or Publications and then Search, by Title or Subject.

E-MAIL SUBSCRIPTION

There are two options for subscribing via e-mail. All NASS reports are available by subscription free of charge direct to your e-mail address. 1) Starting with the NASS Home Page at <http://www.usda.gov/nass/>, click on **Publications**, then click on the **Subscribe by E-mail** button which takes you to the page describing e-mail delivery of reports. Finally, click on **Go to the Subscription Page** and follow the instructions. 2) If you do NOT have Internet access, send an e-mail message to: usda-reports@usda.mannlib.cornell.edu. In the body of the message type the word: **list**.

AUTOFAX ACCESS

NASSFax service is available for some reports from your fax machine. Please call 202-720-2000, using the handset attached to your fax. Respond to the voice prompts. Document 0411 is a list of available reports.

PRINTED REPORTS OR DATA PRODUCTS

CALL OUR TOLL-FREE ORDER DESK: 800-999-6779 (U.S. and Canada)
Other areas, please call 703-605-6220 FAX: 703-605-6900
(Visa, MasterCard, check, or money order acceptable for payment.)

ASSISTANCE

For **assistance** with general agricultural statistics or further information about NASS or its products or services, contact the **Agricultural Statistics Hotline** at **800-727-9540**, 7:30 a.m. to 4:00 p.m. ET, or e-mail: nass@nass.usda.gov.
