

Milk Production

Released July 17, 2002, by the National Agricultural Statistics Service (NASS), Agricultural Statistics Board, U.S. Department of Agriculture. For information on "Milk Production" call Ty Kalaus at 202-690-3236, office hours 7:00 a.m. to 4:30 p.m. ET.

June Milk Production Up 2.0 Percent

Milk production in the 20 major States during June totaled 12.3 billion pounds, up 2.0 percent from June 2001. May revised production, at 13.0 billion pounds, was up 3.0 percent from May 2001. The May revision represented a decrease of 0.2 percent or 25 million pounds from last month's preliminary production estimate.

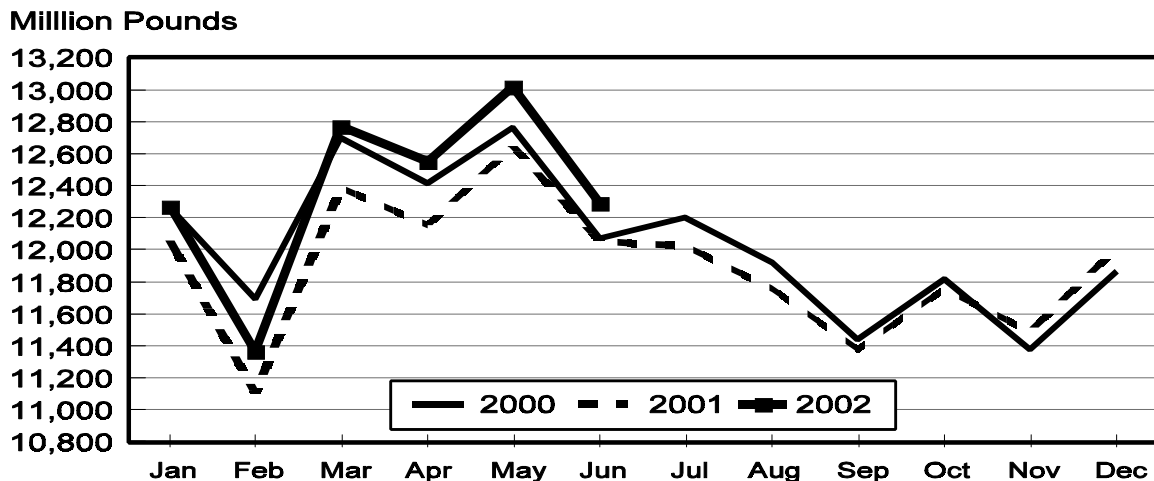
Production per cow in the 20 major States averaged 1,579 pounds for June, 24 pounds above June 2001.

The number of cows on farms in the 20 major States was 7.78 million head, 29,000 head more than June 2001, and 16,000 head more than May 2002.

April-June Milk Production Up 3.0 Percent

The quarterly production of milk for the U.S. was 44.0 billion pounds, 3.0 percent above the April-June period last year. The average number of milk cows in the U.S. during the April-June quarter was 9.15 million head, 33,000 head more than the same period last year.

Monthly Milk Production 20 States



Milk Cows and Production: By Quarter, United States, 2001-2002 ¹

Quarter	Milk Cows ²		Milk Per Cow ³		Milk Production ³		
	2001	2002	2001	2002	2001	2002	Change From 2001
	<i>1,000 Head</i>	<i>1,000 Head</i>	<i>Pounds</i>	<i>Pounds</i>	<i>Million Pounds</i>	<i>Million Pounds</i>	<i>Percent</i>
Jan-Mar	9,143	9,109	4,514	4,639	41,267	42,256	2.4
Apr-Jun	9,114	9,147	4,683	4,805	42,681	43,950	3.0
Jul-Sep	9,098		4,459		40,570		
Oct-Dec	9,105		4,483		40,818		
Annual	9,115		18,139		165,336		

¹ May not add due to rounding.

² Includes dry cows, excludes heifers not yet fresh.

³ Excludes milk sucked by calves.

Milk Cows and Production: By Month, 20 Selected States, 2001-2002 ¹

Month	Milk Cows ²		Milk Per Cow ³		Milk Production ³		
	2001	2002	2001	2002	2001	2002	Change From 2001
	<i>1,000 Head</i>	<i>1,000 Head</i>	<i>Pounds</i>	<i>Pounds</i>	<i>Million Pounds</i>	<i>Million Pounds</i>	<i>Percent</i>
Jan	7,784	7,745	1,549	1,585	12,059	12,272	1.8
Feb	7,764	7,744	1,431	1,468	11,108	11,365	2.3
Mar	7,743	7,744	1,599	1,649	12,384	12,771	3.1
Apr	7,740	7,754	1,571	1,619	12,156	12,555	3.3
May	7,749	7,764	1,632	1,677	12,647	13,021	3.0
Jun	7,751	7,780	1,555	1,579	12,052	12,288	2.0
Jul	7,746		1,552		12,025		
Aug	7,735		1,520		11,754		
Sep	7,730		1,472		11,376		
Oct	7,726		1,522		11,756		
Nov	7,739		1,485		11,492		
Dec	7,750		1,549		12,008		
Annual	7,746		18,438		142,817		

¹ 2002 revised.

² Includes dry cows, excludes heifers not yet fresh.

³ Excludes milk sucked by calves.

Estimated Milk Cows and Production: By Month, United States, 2001-2002 ¹

Month	Milk Cows ²		Milk Per Cow ³		Milk Production ³		
	2001	2002	2001	2002	2001	2002	Change From 2001
	<i>1,000 Head</i>	<i>1,000 Head</i>	<i>Pounds</i>	<i>Pounds</i>	<i>Million Pounds</i>	<i>Million Pounds</i>	<i>Percent</i>
Jan	9,169	9,110	1,527	1,564	13,998	14,245	1.8
Feb	9,143	9,109	1,410	1,448	12,894	13,190	2.3
Mar	9,117	9,109	1,577	1,627	14,375	14,821	3.1
Apr	9,110	9,129	1,545	1,596	14,078	14,573	3.5
May	9,116	9,145	1,607	1,653	14,646	15,114	3.2
Jun	9,117	9,166	1,531	1,556	13,957	14,263	2.2
Jul	9,109		1,523		13,877		
Aug	9,096		1,491		13,564		
Sep	9,088		1,445		13,129		
Oct	9,086		1,498		13,611		
Nov	9,106		1,461		13,305		
Dec	9,122		1,524		13,902		
Annual	9,115		18,139		165,336		

¹ 2002 revised.

² Includes dry cows, excludes heifers not yet fresh.

³ Excludes milk sucked by calves.

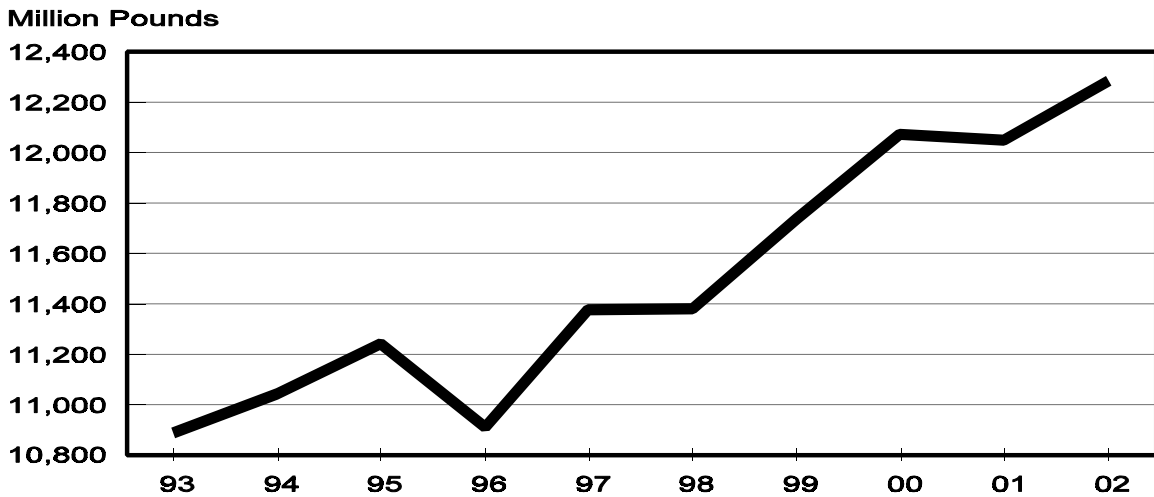
Milk Cows and Production: By State, June 2001-2002

State	Milk Cows ¹		Milk Per Cow ²		Milk Production ²		
	2001	2002	2001	2002	2001	2002	Change From 2001
	<i>1,000 Head</i>	<i>1,000 Head</i>	<i>Pounds</i>	<i>Pounds</i>	<i>Million Pounds</i>	<i>Million Pounds</i>	<i>Percent</i>
AZ	140	143	1,730	1,810	242	259	7.0
CA	1,587	1,645	1,755	1,780	2,785	2,928	5.1
FL	154	150	1,330	1,340	205	201	-2.0
ID	369	390	1,780	1,770	657	690	5.0
IL	115	115	1,480	1,470	170	169	-0.6
IN	154	151	1,420	1,450	219	219	
IA	210	210	1,495	1,510	314	317	1.0
KY	130	125	1,075	1,080	140	135	-3.6
MI	305	300	1,655	1,665	505	500	-1.0
MN	510	490	1,465	1,445	747	708	-5.2
MO	148	137	1,140	1,170	169	160	-5.3
NM	263	298	1,790	1,810	471	539	14.4
NY	673	680	1,490	1,540	1,003	1,047	4.4
OH	260	264	1,370	1,430	356	378	6.2
PA	600	582	1,520	1,535	912	893	-2.1
TX	326	308	1,310	1,425	427	439	2.8
VT	152	154	1,480	1,500	225	231	2.7
VA	118	120	1,295	1,300	153	156	2.0
WA	247	248	1,900	1,925	469	477	1.7
WI	1,290	1,270	1,460	1,450	1,883	1,842	-2.2
20-State Total	7,751	7,780	1,555	1,579	12,052	12,288	2.0

¹ Includes dry cows, excludes heifers not yet fresh.

² Excludes milk sucked by calves.

**June Milk Production, 1993-2002
20 States**



Milk Cows and Production: By State, May 2001-2002 ¹

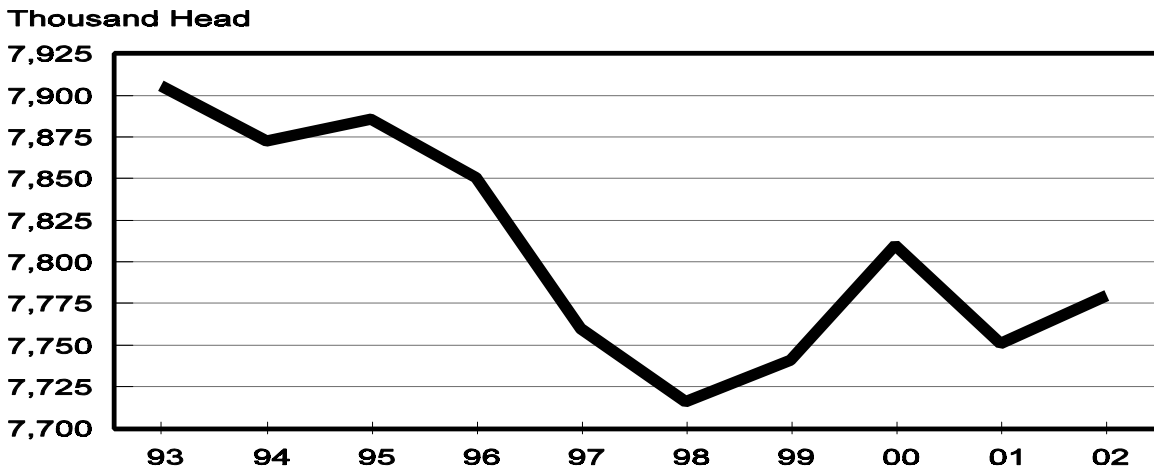
State	Milk Cows ²		Milk per Cow ³		Milk Production ³		
	2001	2002	2001	2002	2001	2002	Change From 2001
	<i>1,000 Head</i>	<i>1,000 Head</i>	<i>Pounds</i>	<i>Pounds</i>	<i>Million Pounds</i>	<i>Million Pounds</i>	<i>Percent</i>
AZ	140	140	1,850	2,050	259	287	10.8
CA	1,582	1,640	1,825	1,875	2,887	3,075	6.5
FL	154	151	1,515	1,460	233	220	-5.6
ID	364	387	1,830	1,820	666	704	5.7
IL	116	115	1,610	1,630	187	187	
IN	152	152	1,490	1,550	226	236	4.4
IA	211	209	1,610	1,630	340	341	0.3
KY	129	123	1,200	1,230	155	151	-2.6
MI	304	298	1,700	1,745	517	520	0.6
MN	515	490	1,525	1,550	785	760	-3.2
MO	148	137	1,255	1,315	186	180	-3.2
NM	261	296	1,870	1,910	488	565	15.8
NY	673	680	1,540	1,610	1,036	1,095	5.7
OH	261	263	1,470	1,540	384	405	5.5
PA	599	580	1,600	1,650	958	957	-0.1
TX	329	310	1,450	1,565	477	485	1.7
VT	152	154	1,545	1,565	235	241	2.6
VA	118	120	1,415	1,425	167	171	2.4
WA	246	247	1,950	2,005	480	495	3.1
WI	1,295	1,272	1,530	1,530	1,981	1,946	-1.8
20-State Total	7,749	7,764	1,632	1,677	12,647	13,021	3.0

¹ 2002 revised.

² Includes dry cows, excludes heifers not yet fresh.

³ Excludes milk sucked by calves.

**June Milk Cows, 1993-2002
20 States**



**Milk Cows and Production: By State and United States,
Revised January-March, 2001-2002**

State	Jan-Mar Milk Cows ¹		Jan-Mar Milk Production ²		Change From 2001
	2001	2002	2001	2002	
	<i>1,000 Head</i>	<i>1,000 Head</i>	<i>Million Pounds</i>	<i>Million Pounds</i>	<i>Percent</i>
AL	22	20	86	79	-8.1
AK	1.1	1.2	3.41	4.02	17.9
AZ	140	140	753	796	5.7
AR	36	33	117	107	-8.5
CA	1,568	1,626	8,097	8,458	4.5
CO	90	97	483	521	7.9
CT	26	24	120	116	-3.3
DE	9.0	9.5	39.0	40.4	3.6
FL	155	152	680	644	-5.3
GA	86	85	388	395	1.8
HI	7.6	6.8	27.7	24.1	-13.0
ID	357	381	1,817	1,940	6.8
IL	117	115	519	530	2.1
IN	151	152	636	646	1.6
IA	214	208	965	956	-0.9
KS	94	100	400	480	20.0
KY	128	123	425	432	1.6
LA	55	52	184	172	-6.5
ME	37	38	159	164	3.1
MD	82	81	327	333	1.8
MA	21	21	89	91	2.2
MI	303	295	1,434	1,456	1.5
MN	518	493	2,306	2,200	-4.6
MS	36	34	145	139	-4.1
MO	148	139	507	513	1.2
MT	19	18	84	83	-1.2
NE	75	68	306	283	-7.5
NV	25	25	119	118	-0.8
NH	18	18	80	84	5.0
NJ	15	13	60	59	-1.7
NM	261	291	1,302	1,508	15.8
NY	670	676	2,854	3,023	5.9
NC	68	65	299	298	-0.3
ND	46	41	156	148	-5.1
OH	263	260	1,070	1,127	5.3
OK	90	88	326	328	0.6
OR	90	105	393	481	22.4
PA	603	584	2,726	2,720	-0.2
RI	1.4	1.4	5.9	5.8	-1.7
SC	22	20	101	102	1.0
SD	100	97	393	373	-5.1
TN	94	90	355	350	-1.4
TX	338	310	1,388	1,388	
UT	93	93	394	392	-0.5
VT	153	154	652	681	4.4
VA	118	120	482	496	2.9
WA	247	247	1,335	1,368	2.5
WV	16	16	61	62	1.6
WI	1,311	1,278	5,603	5,526	-1.4
WY	4.6	4.5	15.2	15.8	3.9
US ³	9,143	9,109	41,267	42,256	2.4

¹ Includes dry cows, excludes heifers not yet fresh.

² Excludes milk sucked by calves.

³ May not add due to rounding.

**Milk Cows and Production: By State and United States,
Preliminary April-June, 2001-2002**

State	Apr-Jun Milk Cows ¹		Apr-Jun Milk Production ²		Change From 2001
	2001	2002	2001	2002	
	<i>1,000 Head</i>	<i>1,000 Head</i>	<i>Million Pounds</i>	<i>Million Pounds</i>	<i>Percent</i>
AL	21	20	81	76	-6.2
AK	1.1	1.2	3.62	4.36	20.4
AZ	140	141	761	829	8.9
AR	35	33	124	111	-10.5
CA	1,582	1,640	8,462	8,940	5.6
CO	91	102	497	555	11.7
CT	25	24	118	117	-0.8
DE	9.0	9.5	38.0	41.0	7.9
FL	154	151	665	641	-3.6
GA	86	85	386	401	3.9
HI	7.5	6.8	28.9	25.9	-10.4
ID	364	386	1,949	2,059	5.6
IL	116	115	539	541	0.4
IN	153	152	663	681	2.7
IA	211	209	982	989	0.7
KS	91	104	410	520	26.8
KY	129	124	446	439	-1.6
LA	54	51	172	158	-8.1
ME	38	38	167	171	2.4
MD	82	81	330	343	3.9
MA	21	21	92	94	2.2
MI	304	298	1,514	1,516	0.1
MN	513	490	2,302	2,215	-3.8
MS	36	34	137	133	-2.9
MO	148	137	542	523	-3.5
MT	19	18	87	85	-2.3
NE	73	67	302	284	-6.0
NV	25	25	124	123	-0.8
NH	18	18	84	84	
NJ	14	13	60	61	1.7
NM	262	296	1,418	1,639	15.6
NY	672	680	3,011	3,176	5.5
NC	68	65	299	302	1.0
ND	46	40	168	152	-9.5
OH	261	262	1,103	1,165	5.6
OK	90	88	336	334	-0.6
OR	90	115	428	559	30.6
PA	599	581	2,792	2,780	-0.4
RI	1.4	1.4	6.1	6.2	1.6
SC	21	20	98	99	1.0
SD	99	97	401	383	-4.5
TN	93	90	355	355	
TX	329	309	1,380	1,414	2.5
UT	93	94	414	428	3.4
VT	152	154	681	702	3.1
VA	118	120	483	496	2.7
WA	246	247	1,407	1,444	2.6
WV	16	16	64	64	
WI	1,293	1,272	5,755	5,675	-1.4
WY	4.4	4.6	15.4	17.0	10.4
US ³	9,114	9,147	42,681	43,950	3.0

¹ Includes dry cows, excludes heifers not yet fresh.

² Excludes milk sucked by calves.

³ May not add due to rounding.

Reliability Statement

Survey Procedures: Primary data used to determine these estimates were obtained from a sample of producers. Individual States maintain a list of all known milk producers and information on the size of their herd. States use all known sources of producers to ensure that their lists are as complete as possible. Generally, all large producers and a sample of small producers are included in the survey. Questionnaires are mailed to producers near the end of the month to obtain data for the first day of the month. Additional reports are obtained by telephone, as needed, to supplement the mail response.

Estimation Procedures: State offices prepare these estimates using survey indications, historic trends, and any available administrative data. Individual State estimates are reviewed by the Agricultural Statistics Board for reasonableness.

Revision Policy: Milk production, rate per cow, and number of cows are subject to revision the following month for monthly States or the following quarter for the quarterly States. Normally, Federal Market Order sales are the main basis for revisions. However, data for all orders are not available in time for this revision. Estimates are again subject to revisions in February each year based on additional administrative data. In the event that additional changes are necessary, a third revision is possible in February the following year. Estimates are again reviewed after data from the five-year Census of Agriculture are available. No revisions are made after that date.

Reliability: Since all operations with dairy animals are not included in the sample, survey estimates are subject to sampling variability. Survey results are also subject to non-sampling errors such as omissions, duplications, and mistakes in reporting, recording, and processing the data. The effects of these errors cannot be measured directly. They are minimized through rigid quality controls in the data collection process and through a careful review of all reported data for consistency and reasonableness.

To assist users in evaluating the reliability of the estimates in this report, the "Root Mean Square Error" is shown for selected items on the next page. The "Root Mean Square Error" is a statistical measure based on past performance and is computed using the differences between first and final estimates. The "Root Mean Square Error" for milk cow inventory estimates over the past 10 April-June quarters is 0.9 percent. This means that chances are 2 out of 3 that the final April-June estimate will not be above or below the current estimate of 9.15 million head by more than 0.9 percent. Chances are 9 out of 10 that the difference will not exceed 1.6 percent.

Reliability of April-June Milk Estimates ¹

Item	Root Mean Square Error	90% Confidence Level		Difference Between First and Latest Estimates			Quarters	
				Average	Smallest	Largest	First Above Latest	First Below Latest
				<i>Million Pounds</i>	<i>Million Pounds</i>	<i>Million Pounds</i>	<i>Number</i>	<i>Number</i>
Milk Production	<i>Percent</i> 0.4	<i>Percent</i> 0.7	<i>Million Pounds</i> 308	<i>Million Pounds</i> 116	<i>Million Pounds</i> 3	<i>Million Pounds</i> 264	<i>Number</i> 8	<i>Number</i> 2
All Milk Cows	<i>Percent</i> 0.9	<i>Percent</i> 1.6	<i>1,000 Head</i> 146	<i>1,000 Head</i> 56	<i>1,000 Head</i> 1	<i>1,000 Head</i> 159	<i>Number</i> 7	<i>Number</i> 3

¹ Based on records for the past 10 April-June quarters.

The next "Milk Production" report will be released at 3 p.m. ET on August 15, 2002.

The United States Department of Agriculture (USDA) prohibits discrimination in all its programs on the basis of race, color, national origin, gender, religion, age, disability, political beliefs, sexual orientation, and marital or family status. (Not all prohibited bases apply to all programs.) Persons with disabilities who require alternative means for communication of program information (braille, large print, audiotape, etc.) should contact the USDA's TARGET Center at 202-720-2600 (voice and TDD).

To file a complaint of discrimination, write USDA, Director, Office of Civil Rights, Room 326-W, Whitten Building, 1400 Independence Avenue, SW, Washington, D.C., 20250-9410, or call 202-720-5964 (voice or TDD). USDA is an equal opportunity provider and employer.

ACCESS TO REPORTS!!

For your convenience, there are several ways to obtain NASS reports, data products, and services:

INTERNET ACCESS

All NASS reports are available free of charge on the worldwide Internet. For access, connect to the Internet and go to the NASS Home Page at: <http://www.usda.gov/nass/>. Select "Today's Reports" or Publications and then Reports by Calendar or Publications and then Search, by Title or Subject.

E-MAIL SUBSCRIPTION

There are two options for subscribing via e-mail. All NASS reports are available by subscription free of charge direct to your e-mail address. 1) Starting with the NASS Home Page at <http://www.usda.gov/nass/>, click on **Publications**, then click on the **Subscribe by E-mail** button which takes you to the page describing e-mail delivery of reports. Finally, click on **Go to the Subscription Page** and follow the instructions. 2) If you do NOT have Internet access, send an e-mail message to: usda-reports@usda.mannlib.cornell.edu. In the body of the message type the word: **list**.

AUTOFAX ACCESS

NASSFax service is available for some reports from your fax machine. Please call 202-720-2000, using the handset attached to your fax. Respond to the voice prompts. Document 0411 is a list of available reports.

PRINTED REPORTS OR DATA PRODUCTS

CALL OUR TOLL-FREE ORDER DESK: 800-999-6779 (U.S. and Canada)
Other areas, please call 703-605-6220 FAX: 703-605-6900
(Visa, MasterCard, check, or money order acceptable for payment.)

ASSISTANCE

For **assistance** with general agricultural statistics or further information about NASS or its products or services, contact the **Agricultural Statistics Hotline** at **800-727-9540**, 7:30 a.m. to 4:00 p.m. ET, or e-mail: nass@nass.usda.gov.
