

# Milk Production

Released August 15, 2002, by the National Agricultural Statistics Service (NASS), Agricultural Statistics Board, U.S. Department of Agriculture. For information on "Milk Production" call Ty Kalaus at 202-690-3236, office hours 7:00 a.m. to 4:30 p.m. ET.

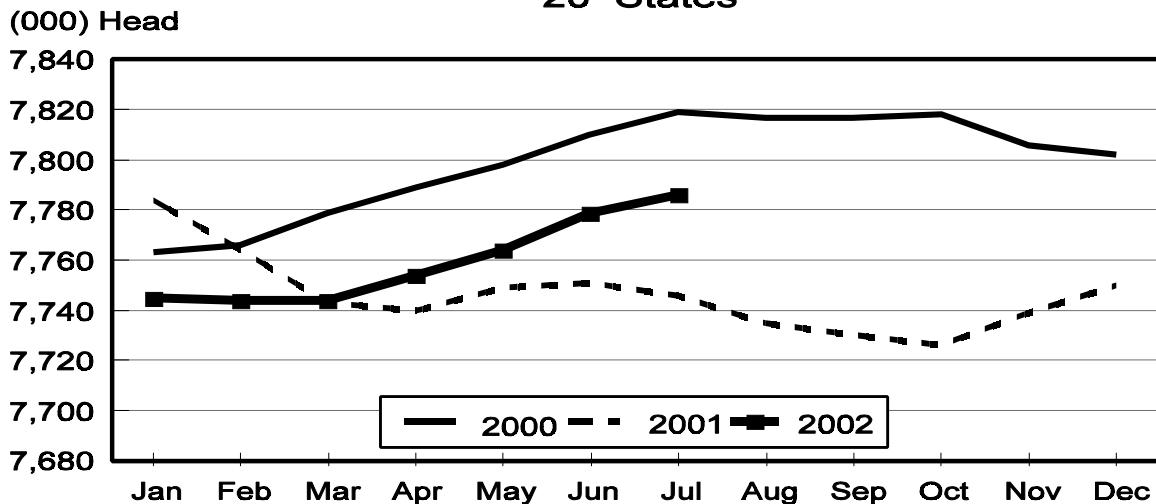
## July Milk Production Up 2.3 Percent

**Milk production** in the 20 major States during July totaled 12.3 billion pounds, up 2.3 percent from July 2001. June revised production, at 12.3 billion pounds, was up 2.2 percent from June 2001. The June revision represented an increase of 0.2 percent or 27 million pounds from last month's preliminary production estimate.

**Production per cow** in the 20 major States averaged 1,580 pounds for July, 28 pounds above July 2001.

**The number of milk cows** on farms in the 20 major States was 7.79 million head, 40,000 head more than July 2001, and 7,000 head more than June 2002.

## Monthly Milk Cows 20 States



**Milk Cows and Production: By Quarter, United States, 2001-2002 <sup>1</sup>**

Quarter	Milk Cows <sup>2</sup>		Milk Per Cow <sup>3</sup>		Milk Production <sup>3</sup>		
	2001	2002	2001	2002	2001	2002	Change From 2001
	<i>1,000 Head</i>	<i>1,000 Head</i>	<i>Pounds</i>	<i>Pounds</i>	<i>Million Pounds</i>	<i>Million Pounds</i>	<i>Percent</i>
Jan-Mar	9,143	9,109	4,514	4,639	41,267	42,256	2.4
Apr-Jun	9,114	9,147	4,683	4,808	42,681	43,977	3.0
Jul-Sep	9,098		4,459		40,570		
Oct-Dec	9,105		4,483		40,818		
Annual	9,115		18,139		165,336		

<sup>1</sup> May not add due to rounding.

<sup>2</sup> Includes dry cows, excludes heifers not yet fresh.

<sup>3</sup> Excludes milk sucked by calves.

**Milk Cows and Production: By Month, 20 Selected States, 2001-2002 <sup>1</sup>**

Month	Milk Cows <sup>2</sup>		Milk Per Cow <sup>3</sup>		Milk Production <sup>3</sup>		
	2001	2002	2001	2002	2001	2002	Change From 2001
	<i>1,000 Head</i>	<i>1,000 Head</i>	<i>Pounds</i>	<i>Pounds</i>	<i>Million Pounds</i>	<i>Million Pounds</i>	<i>Percent</i>
Jan	7,784	7,745	1,549	1,585	12,059	12,272	1.8
Feb	7,764	7,744	1,431	1,468	11,108	11,365	2.3
Mar	7,743	7,744	1,599	1,649	12,384	12,771	3.1
Apr	7,740	7,754	1,571	1,619	12,156	12,555	3.3
May	7,749	7,764	1,632	1,677	12,647	13,021	3.0
Jun	7,751	7,779	1,555	1,583	12,052	12,315	2.2
Jul	7,746	7,786	1,552	1,580	12,025	12,305	2.3
Aug	7,735		1,520		11,754		
Sep	7,730		1,472		11,376		
Oct	7,726		1,522		11,756		
Nov	7,739		1,485		11,492		
Dec	7,750		1,549		12,008		
Annual	7,746		18,438		142,817		

<sup>1</sup> 2002 revised.

<sup>2</sup> Includes dry cows, excludes heifers not yet fresh.

<sup>3</sup> Excludes milk sucked by calves.

**Estimated Milk Cows and Production: By Month, United States, 2001-2002 <sup>1</sup>**

Month	Milk Cows <sup>2</sup>		Milk Per Cow <sup>3</sup>		Milk Production <sup>3</sup>		
	2001	2002	2001	2002	2001	2002	Change From 2001
	<i>1,000 Head</i>	<i>1,000 Head</i>	<i>Pounds</i>	<i>Pounds</i>	<i>Million Pounds</i>	<i>Million Pounds</i>	<i>Percent</i>
Jan	9,169	9,110	1,527	1,564	13,998	14,245	1.8
Feb	9,143	9,109	1,410	1,448	12,894	13,190	2.3
Mar	9,117	9,109	1,577	1,627	14,375	14,821	3.1
Apr	9,110	9,129	1,545	1,596	14,078	14,573	3.5
May	9,116	9,145	1,607	1,653	14,646	15,114	3.2
Jun	9,117	9,166	1,531	1,559	13,957	14,290	2.4
Jul	9,109	9,175	1,523	1,551	13,877	14,230	2.5
Aug	9,096		1,491		13,564		
Sep	9,088		1,445		13,129		
Oct	9,086		1,498		13,611		
Nov	9,106		1,461		13,305		
Dec	9,122		1,524		13,902		
Annual	9,115		18,139		165,336		

<sup>1</sup> 2002 revised.

<sup>2</sup> Includes dry cows, excludes heifers not yet fresh.

<sup>3</sup> Excludes milk sucked by calves.

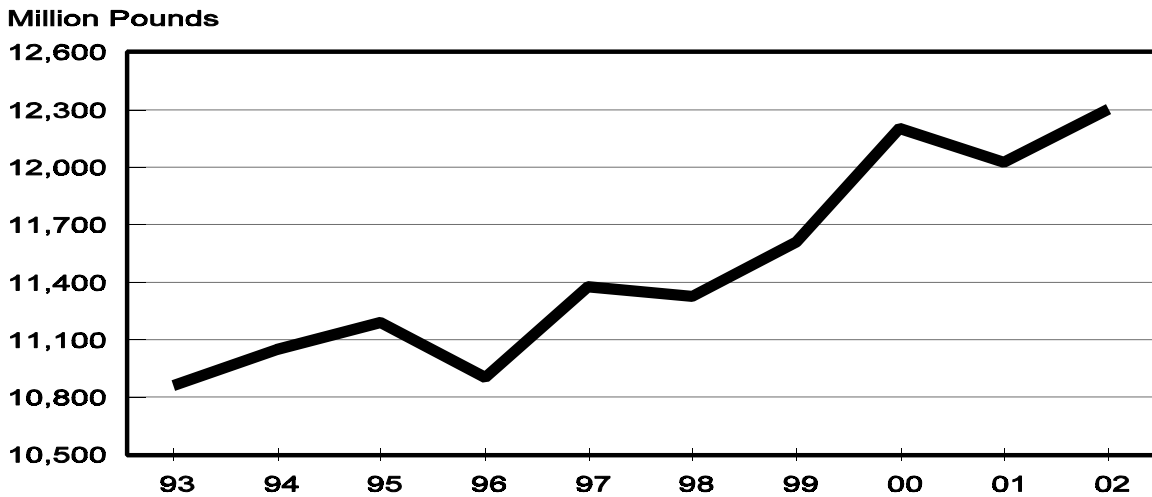
**Milk Cows and Production: By State, July 2001-2002**

State	Milk Cows <sup>1</sup>		Milk Per Cow <sup>2</sup>		Milk Production <sup>2</sup>		
	2001	2002	2001	2002	2001	2002	Change From 2001
	<i>1,000 Head</i>	<i>1,000 Head</i>	<i>Pounds</i>	<i>Pounds</i>	<i>Million Pounds</i>	<i>Million Pounds</i>	<i>Percent</i>
AZ	140	145	1,740	1,690	244	245	0.4
CA	1,592	1,650	1,770	1,815	2,818	2,995	6.3
FL	153	149	1,235	1,250	189	186	-1.6
ID	370	393	1,840	1,830	681	719	5.6
IL	115	115	1,405	1,420	162	163	0.6
IN	154	151	1,395	1,435	215	217	0.9
IA	209	210	1,475	1,480	308	311	1.0
KY	129	123	1,045	1,065	135	131	-3.0
MI	303	301	1,645	1,665	498	501	0.6
MN	510	485	1,415	1,400	722	679	-6.0
MO	146	137	1,055	1,120	154	153	-0.6
NM	265	303	1,790	1,810	474	548	15.6
NY	673	680	1,520	1,570	1,023	1,068	4.4
OH	258	265	1,420	1,450	366	384	4.9
PA	600	584	1,510	1,525	906	891	-1.7
TX	324	308	1,205	1,350	390	416	6.7
VT	152	154	1,505	1,480	229	228	-0.4
VA	118	120	1,300	1,300	153	156	2.0
WA	247	248	1,960	1,960	484	486	0.4
WI	1,288	1,265	1,455	1,445	1,874	1,828	-2.5
20-State Total	7,746	7,786	1,552	1,580	12,025	12,305	2.3

<sup>1</sup> Includes dry cows, excludes heifers not yet fresh.

<sup>2</sup> Excludes milk sucked by calves.

**July Milk Production, 1993-2002  
20 States**



**Milk Cows and Production: By State, June 2001-2002 <sup>1</sup>**

State	Milk Cows <sup>2</sup>		Milk per Cow <sup>3</sup>		Milk Production <sup>3</sup>		
	2001	2002	2001	2002	2001	2002	Change From 2001
	<i>1,000 Head</i>	<i>1,000 Head</i>	<i>Pounds</i>	<i>Pounds</i>	<i>Million Pounds</i>	<i>Million Pounds</i>	<i>Percent</i>
AZ	140	143	1,730	1,810	242	259	7.0
CA	1,587	1,645	1,755	1,800	2,785	2,961	6.3
FL	154	150	1,330	1,340	205	201	-2.0
ID	369	391	1,780	1,770	657	692	5.3
IL	115	115	1,480	1,470	170	169	-0.6
IN	154	151	1,420	1,450	219	219	
IA	210	210	1,495	1,510	314	317	1.0
KY	130	123	1,075	1,080	140	133	-5.0
MI	305	300	1,655	1,665	505	500	-1.0
MN	510	490	1,465	1,445	747	708	-5.2
MO	148	137	1,140	1,170	169	160	-5.3
NM	263	298	1,790	1,810	471	539	14.4
NY	673	680	1,490	1,540	1,003	1,047	4.4
OH	260	264	1,370	1,410	356	372	4.5
PA	600	582	1,520	1,535	912	893	-2.1
TX	326	308	1,310	1,425	427	439	2.8
VT	152	154	1,480	1,500	225	231	2.7
VA	118	120	1,295	1,300	153	156	2.0
WA	247	248	1,900	1,925	469	477	1.7
WI	1,290	1,270	1,460	1,450	1,883	1,842	-2.2
20-State Total	7,751	7,779	1,555	1,583	12,052	12,315	2.2

<sup>1</sup> 2002 revised.

<sup>2</sup> Includes dry cows, excludes heifers not yet fresh.

<sup>3</sup> Excludes milk sucked by calves.

**July Milk Cows, 1993-2002  
20 States**



## Reliability Statement

**Survey Procedures:** Primary data used to determine these estimates were obtained from a sample of producers. Individual States maintain a list of all known milk producers and information on the size of their herd. States use all known sources of producers to ensure that their lists are as complete as possible. Generally, all large producers and a sample of small producers are included in the survey. Questionnaires are mailed to producers near the end of the month to obtain data for the first day of the month. Additional reports are obtained by telephone, as needed, to supplement the mail response.

**Estimation Procedures:** State offices prepare these estimates using survey indications, historic trends, and any available administrative data. Individual State estimates are reviewed by the Agricultural Statistics Board for reasonableness.

**Revision Policy:** Milk production, rate per cow, and number of cows are subject to revision the following month for monthly States or the following quarter for the quarterly States. Normally, Federal Market Order sales are the main basis for revisions. However, data for all orders are not available in time for this revision. Estimates are again subject to revisions in February each year based on additional administrative data. In the event that additional changes are necessary, a third revision is possible in February the following year. Estimates are again reviewed after data from the five-year Census of Agriculture are available. No revisions are made after that date.

**Reliability:** Since all operations with dairy animals are not included in the sample, survey estimates are subject to sampling variability. Survey results are also subject to non-sampling errors such as omissions, duplications, and mistakes in reporting, recording, and processing the data. The effects of these errors cannot be measured directly. They are minimized through rigid quality controls in the data collection process and through a careful review of all reported data for consistency and reasonableness.

To assist users in evaluating the reliability of the estimates in this report, the "Root Mean Square Error" is shown for selected items on the next page. The "Root Mean Square Error" is a statistical measure based on past performance and is computed using the differences between first and final estimates. The "Root Mean Square Error" for milk cow inventory estimates over the past 10 April-June quarters is 0.9 percent. This means that chances are 2 out of 3 that the final April-June estimate will not be above or below the current estimate of 9.15 million head by more than 0.9 percent. Chances are 9 out of 10 that the difference will not exceed 1.6 percent.

**Reliability of April-June Milk Estimates <sup>1</sup>**

Item	Root Mean Square Error	90% Confidence Level		Difference Between First and Latest Estimates			Quarters	
				Average	Smallest	Largest	First Above Latest	First Below Latest
				<i>Million Pounds</i>	<i>Million Pounds</i>	<i>Million Pounds</i>	<i>Number</i>	<i>Number</i>
Milk Production	<i>Percent</i> 0.4	<i>Percent</i> 0.7	<i>Million Pounds</i> 308	<i>Million Pounds</i> 116	<i>Million Pounds</i> 3	<i>Million Pounds</i> 264	<i>Number</i> 8	<i>Number</i> 2
All Milk Cows	<i>Percent</i> 0.9	<i>Percent</i> 1.6	<i>1,000 Head</i> 146	<i>1,000 Head</i> 56	<i>1,000 Head</i> 1	<i>1,000 Head</i> 159	<i>Number</i> 7	<i>Number</i> 3

<sup>1</sup> Based on records for the past 10 April-June quarters.

The next "Milk Production" report will be released at 3 p.m. ET on September 17, 2002.

The United States Department of Agriculture (USDA) prohibits discrimination in all its programs on the basis of race, color, national origin, gender, religion, age, disability, political beliefs, sexual orientation, and marital or family status. (Not all prohibited bases apply to all programs.) Persons with disabilities who require alternative means for communication of program information (braille, large print, audiotape, etc.) should contact the USDA's TARGET Center at 202-720-2600 (voice and TDD).

To file a complaint of discrimination, write USDA, Director, Office of Civil Rights, Room 326-W, Whitten Building, 1400 Independence Avenue, SW, Washington, D.C., 20250-9410, or call 202-720-5964 (voice or TDD). USDA is an equal opportunity provider and employer.

## **ACCESS TO REPORTS!!**

---

For your convenience, there are several ways to obtain NASS reports, data products, and services:

### **INTERNET ACCESS**

All NASS reports are available free of charge on the worldwide Internet. For access, connect to the Internet and go to the NASS Home Page at: <http://www.usda.gov/nass/>. Select "Today's Reports" or Publications and then Reports Calendar or Publications and then Search, by Title or Subject.

### **E-MAIL SUBSCRIPTION**

There are two options for subscribing via e-mail. All NASS reports are available by subscription free of charge direct to your e-mail address. 1) Starting with the NASS Home Page at <http://www.usda.gov/nass/>, click on **Publications**, then click on the **Subscribe by E-mail** button which takes you to the page describing e-mail delivery of reports. Finally, click on **Go to the Subscription Page** and follow the instructions. 2) If you do NOT have Internet access, send an e-mail message to: [usda-reports@usda.mannlib.cornell.edu](mailto:usda-reports@usda.mannlib.cornell.edu). In the body of the message type the word: **list**.

### **AUTOFAX ACCESS**

NASSFax service is available for some reports from your fax machine. Please call 202-720-2000, using the handset attached to your fax. Respond to the voice prompts. Document 0411 is a list of available reports.

-----

### **PRINTED REPORTS OR DATA PRODUCTS**

**CALL OUR TOLL-FREE ORDER DESK: 800-999-6779 (U.S. and Canada)**  
**Other areas, please call 703-605-6220                      FAX: 703-605-6900**  
**(Visa, MasterCard, check, or money order acceptable for payment.)**

-----

### **ASSISTANCE**

For **assistance** with general agricultural statistics or further information about NASS or its products or services, contact the **Agricultural Statistics Hotline** at **800-727-9540**, 7:30 a.m. to 4:00 p.m. ET, or e-mail: [nass@nass.usda.gov](mailto:nass@nass.usda.gov).

---

**USDA Data Users' Forum  
October 21, 2002  
Holiday Inn Mart Plaza  
Chicago, Illinois**

The USDA's National Agricultural Statistics Service will hold a public forum for open exchange between Federal agricultural statistics agencies and data users on October 21, 2002. Agency representatives will provide updates on pending changes in the various statistical and information programs and will seek comments from data users. The USDA's Agricultural Marketing Service, Economic Research Service, Foreign Agricultural Service, and World Agricultural Outlook Board, as well as the U.S. Census Bureau's Foreign Trade Division, will also participate in the forum.

For registration details or additional information about the Data Users' Forum, see the NASS homepage at [www.usda.gov/nass/](http://www.usda.gov/nass/) or contact Karlyn McCutcheon of NASS at (202) 690-8141 or at [karlyn\\_mccutcheon@nass.usda.gov](mailto:karlyn_mccutcheon@nass.usda.gov).

This Data Users' Forum precedes an Industry Outlook Meeting that will be held at the same location on October 22, 2002. The outlook meeting brings together analysts from various commodity sectors to discuss the outlook situation. For more information about the outlook meeting and to register for it, contact Terry Francl of the American Farm Bureau Federation at (847) 685-8769 or at [terry@fb.org](mailto:terry@fb.org).