

Released October 17, 2002, by the National Agricultural Statistics Service (NASS), Agricultural Statistics Board, U.S. Department of Agriculture. For information on "Milk Production" call Ty Kalaus at 202-690-3236, office hours 7:00 a.m. to 4:30 p.m. ET.

September Milk Production Up 3.3 Percent

Milk production in the 20 major States during September totaled 11.8 billion pounds, up 3.3 percent from September 2001. August revised production, at 12.2 billion pounds, was up 4.1 percent from August 2001. The August revision represented an increase of 0.2 percent or 27 million pounds from last month's preliminary production estimate.

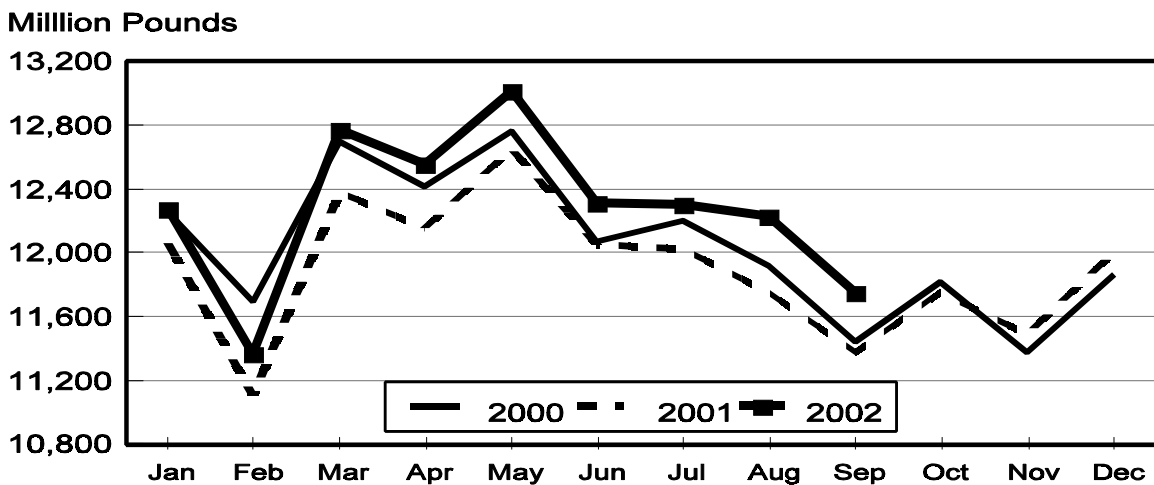
Production per cow in the 20 major States averaged 1,510 pounds for September, 38 pounds above September 2001.

The number of cows on farms in the 20 major States was 7.79 million head, 56,000 head more than September 2001, but 4,000 head less than August 2002.

July-September Milk Production Up 3.4 Percent

The quarterly production of milk for the U.S. was 42.0 billion pounds, 3.4 percent above the July-September period last year. The average number of milk cows in the U.S. during the quarter was 9.16 million head, 61,000 head more than the same period last year.

Monthly Milk Production 20 States



Milk Cows and Production: By Quarter, United States, 2001-2002 ¹

Quarter	Milk Cows ²		Milk Per Cow ³		Milk Production ³		
	2001	2002	2001	2002	2001	2002	Change From 2001
	<i>1,000 Head</i>	<i>1,000 Head</i>	<i>Pounds</i>	<i>Pounds</i>	<i>Million Pounds</i>	<i>Million Pounds</i>	<i>Percent</i>
Jan-Mar	9,143	9,109	4,514	4,639	41,267	42,256	2.4
Apr-Jun	9,114	9,145	4,683	4,806	42,681	43,954	3.0
Jul-Sep	9,098	9,159	4,459	4,582	40,570	41,965	3.4
Oct-Dec	9,105		4,483		40,818		
Annual	9,115		18,139		165,336		

¹ May not add due to rounding.

² Includes dry cows, excludes heifers not yet fresh.

³ Excludes milk sucked by calves.

Milk Cows and Production: By Month, 20 Selected States, 2001-2002 ¹

Month	Milk Cows ²		Milk Per Cow ³		Milk Production ³		
	2001	2002	2001	2002	2001	2002	Change From 2001
	<i>1,000 Head</i>	<i>1,000 Head</i>	<i>Pounds</i>	<i>Pounds</i>	<i>Million Pounds</i>	<i>Million Pounds</i>	<i>Percent</i>
Jan	7,784	7,745	1,549	1,585	12,059	12,272	1.8
Feb	7,764	7,744	1,431	1,468	11,108	11,365	2.3
Mar	7,743	7,744	1,599	1,649	12,384	12,771	3.1
Apr	7,740	7,754	1,571	1,619	12,156	12,555	3.3
May	7,749	7,764	1,632	1,677	12,647	13,021	3.0
Jun	7,751	7,779	1,555	1,583	12,052	12,315	2.2
Jul	7,746	7,783	1,552	1,581	12,025	12,306	2.3
Aug	7,735	7,790	1,520	1,570	11,754	12,232	4.1
Sep	7,730	7,786	1,472	1,510	11,376	11,754	3.3
Oct	7,726		1,522		11,756		
Nov	7,739		1,485		11,492		
Dec	7,750		1,549		12,008		
Annual	7,746		18,438		142,817		

¹ 2002 revised.

² Includes dry cows, excludes heifers not yet fresh.

³ Excludes milk sucked by calves.

Estimated Milk Cows and Production: By Month, United States, 2001-2002 ¹

Month	Milk Cows ²		Milk Per Cow ³		Milk Production ³		
	2001	2002	2001	2002	2001	2002	Change From 2001
	<i>1,000 Head</i>	<i>1,000 Head</i>	<i>Pounds</i>	<i>Pounds</i>	<i>Million Pounds</i>	<i>Million Pounds</i>	<i>Percent</i>
Jan	9,169	9,110	1,527	1,564	13,998	14,245	1.8
Feb	9,143	9,109	1,410	1,448	12,894	13,190	2.3
Mar	9,117	9,109	1,577	1,627	14,375	14,821	3.1
Apr	9,110	9,129	1,545	1,595	14,078	14,564	3.5
May	9,116	9,145	1,607	1,652	14,646	15,105	3.1
Jun	9,117	9,161	1,531	1,559	13,957	14,285	2.4
Jul	9,109	9,161	1,523	1,553	13,877	14,230	2.5
Aug	9,096	9,162	1,491	1,544	13,564	14,143	4.3
Sep	9,088	9,155	1,445	1,485	13,129	13,592	3.5
Oct	9,086		1,498		13,611		
Nov	9,106		1,461		13,305		
Dec	9,122		1,524		13,902		
Annual	9,115		18,139		165,336		

¹ 2002 revised.

² Includes dry cows, excludes heifers not yet fresh.

³ Excludes milk sucked by calves.

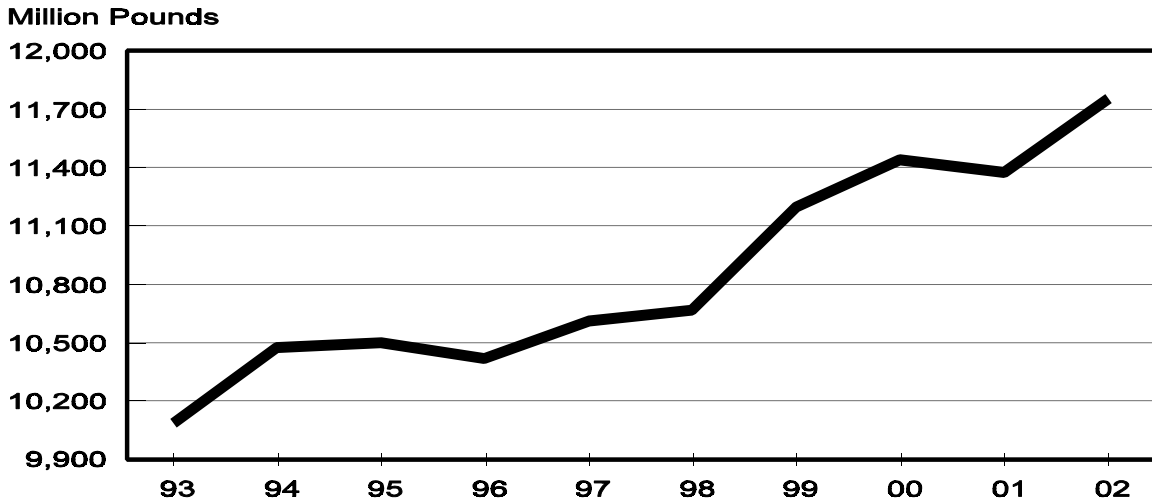
Milk Cows and Production: By State, September 2001-2002

State	Milk Cows ¹		Milk Per Cow ²		Milk Production ²		Change From 2001
	2001	2002	2001	2002	2001	2002	
	<i>1,000 Head</i>	<i>1,000 Head</i>	<i>Pounds</i>	<i>Pounds</i>	<i>Million Pounds</i>	<i>Million Pounds</i>	<i>Percent</i>
AZ	140	150	1,545	1,665	216	250	15.7
CA	1,604	1,655	1,690	1,735	2,711	2,871	5.9
FL	152	148	1,030	1,060	157	157	
ID	369	396	1,770	1,750	653	693	6.1
IL	115	115	1,345	1,365	155	157	1.3
IN	154	149	1,310	1,370	202	204	1.0
IA	206	209	1,430	1,425	295	298	1.0
KY	127	120	975	1,000	124	120	-3.2
MI	303	300	1,570	1,605	476	482	1.3
MN	505	480	1,330	1,330	672	638	-5.1
MO	142	136	985	1,050	140	143	2.1
NM	270	305	1,700	1,700	459	519	13.1
NY	673	676	1,430	1,470	962	994	3.3
OH	257	264	1,340	1,350	344	356	3.5
PA	596	587	1,450	1,460	864	857	-0.8
TX	318	309	1,120	1,260	356	389	9.3
VT	152	153	1,420	1,400	216	214	-0.9
VA	118	119	1,230	1,235	145	147	1.4
WA	247	247	1,835	1,855	453	458	1.1
WI	1,282	1,268	1,385	1,425	1,776	1,807	1.7
20-State Total	7,730	7,786	1,472	1,510	11,376	11,754	3.3

¹ Includes dry cows, excludes heifers not yet fresh.

² Excludes milk sucked by calves.

**September Milk Production, 1993-2002
20 States**



Milk Cows and Production: By State, August 2001-2002 ¹

State	Milk Cows ²		Milk per Cow ³		Milk Production ³		
	2001	2002	2001	2002	2001	2002	Change From 2001
	<i>1,000 Head</i>	<i>1,000 Head</i>	<i>Pounds</i>	<i>Pounds</i>	<i>Million Pounds</i>	<i>Million Pounds</i>	<i>Percent</i>
AZ	140	150	1,520	1,775	213	266	24.9
CA	1,598	1,652	1,765	1,810	2,820	2,990	6.0
FL	153	149	1,115	1,195	171	178	4.1
ID	370	395	1,840	1,830	681	723	6.2
IL	115	115	1,370	1,395	158	160	1.3
IN	154	150	1,345	1,410	207	212	2.4
IA	207	210	1,475	1,480	305	311	2.0
KY	128	122	1,000	1,025	128	125	-2.3
MI	303	301	1,615	1,680	489	506	3.5
MN	505	485	1,385	1,410	699	684	-2.1
MO	144	136	975	1,090	140	148	5.7
NM	268	305	1,770	1,765	474	538	13.5
NY	673	677	1,480	1,510	996	1,022	2.6
OH	258	264	1,380	1,390	356	367	3.1
PA	598	585	1,480	1,515	885	886	0.1
TX	322	308	1,140	1,290	367	397	8.2
VT	152	154	1,460	1,450	222	223	0.5
VA	118	119	1,260	1,250	149	149	
WA	247	248	1,945	1,965	480	487	1.5
WI	1,282	1,265	1,415	1,470	1,814	1,860	2.5
20-State Total	7,735	7,790	1,520	1,570	11,754	12,232	4.1

¹ 2002 revised.

² Includes dry cows, excludes heifers not yet fresh.

³ Excludes milk sucked by calves.

**September Milk Cows, 1993-2002
20 States**



**Milk Cows and Production: By State and United States,
Revised April-June, 2001-2002**

State	Apr-Jun Milk Cows ¹		Apr-Jun Milk Production ²		Change From 2001
	2001	2002	2001	2002	
	<i>1,000 Head</i>	<i>1,000 Head</i>	<i>Million Pounds</i>	<i>Million Pounds</i>	<i>Percent</i>
AL	21	20	81	76	-6.2
AK	1.1	1.2	3.62	4.36	20.4
AZ	140	141	761	829	8.9
AR	35	33	124	111	-10.5
CA	1,582	1,640	8,462	8,973	6.0
CO	91	102	497	548	10.3
CT	25	24	118	117	-0.8
DE	9.0	9.5	38.0	41.0	7.9
FL	154	151	665	641	-3.6
GA	86	85	386	401	3.9
HI	7.5	6.8	28.9	25.9	-10.4
ID	364	387	1,949	2,061	5.7
IL	116	115	539	541	0.4
IN	153	152	663	681	2.7
IA	211	209	982	989	0.7
KS	91	104	410	520	26.8
KY	129	123	446	437	-2.0
LA	54	51	172	158	-8.1
ME	38	38	167	171	2.4
MD	82	81	330	343	3.9
MA	21	21	92	94	2.2
MI	304	298	1,514	1,516	0.1
MN	513	490	2,302	2,215	-3.8
MS	36	34	137	133	-2.9
MO	148	137	542	523	-3.5
MT	19	18	87	86	-1.1
NE	73	67	302	296	-2.0
NV	25	25	124	123	-0.8
NH	18	18	84	84	
NJ	14	13	60	61	1.7
NM	262	296	1,418	1,639	15.6
NY	672	680	3,011	3,176	5.5
NC	68	65	299	302	1.0
ND	46	40	168	152	-9.5
OH	261	262	1,103	1,159	5.1
OK	90	88	336	334	-0.6
OR	90	115	428	543	26.9
PA	599	581	2,792	2,780	-0.4
RI	1.4	1.4	6.1	6.2	1.6
SC	21	20	98	99	1.0
SD	99	97	401	369	-8.0
TN	93	90	355	360	1.4
TX	329	309	1,380	1,414	2.5
UT	93	92	414	424	2.4
VT	152	154	681	702	3.1
VA	118	120	483	496	2.7
WA	246	247	1,407	1,444	2.6
WV	16	16	64	64	
WI	1,293	1,272	5,755	5,675	-1.4
WY	4.4	4.6	15.4	17.0	10.4
US ³	9,114	9,145	42,681	43,954	3.0

¹ Includes dry cows, excludes heifers not yet fresh.

² Excludes milk sucked by calves.

³ May not add due to rounding.

**Milk Cows and Production: By State and United States,
Preliminary July-September, 2001-2002**

State	Jul-Sep Milk Cows ¹		Jul-Sep Milk Production ²		Change From 2001
	2001	2002	2001	2002	
	<i>1,000 Head</i>	<i>1,000 Head</i>	<i>Million Pounds</i>	<i>Million Pounds</i>	<i>Percent</i>
AL	21	20	63	59	-6.3
AK	1.1	1.3	3.61	4.94	36.8
AZ	140	149	673	789	17.2
AR	34	32	95	90	-5.3
CA	1,598	1,651	8,349	8,842	5.9
CO	92	103	489	558	14.1
CT	24	24	108	108	
DE	9.0	9.0	37.0	38.1	3.0
FL	153	149	517	521	0.8
GA	86	84	315	330	4.8
HI	7.4	6.5	26.0	24.1	-7.3
ID	370	394	2,015	2,126	5.5
IL	115	115	475	480	1.1
IN	154	150	624	633	1.4
IA	207	210	908	923	1.7
KS	91	104	375	500	33.3
KY	128	122	387	372	-3.9
LA	54	50	131	125	-4.6
ME	38	37	166	164	-1.2
MD	82	80	317	324	2.2
MA	21	20	89	89	
MI	303	301	1,463	1,489	1.8
MN	507	483	2,093	2,003	-4.3
MS	35	34	102	101	-1.0
MO	144	136	434	444	2.3
MT	19	18	88	88	
NE	70	67	275	283	2.9
NV	25	25	122	123	0.8
NH	18	17	79	79	
NJ	14	13	57	56	-1.8
NM	268	304	1,407	1,605	14.1
NY	673	677	2,981	3,068	2.9
NC	67	64	281	270	-3.9
ND	46	39	166	145	-12.7
OH	258	264	1,066	1,101	3.3
OK	89	88	315	316	0.3
OR	93	120	433	553	27.7
PA	598	585	2,655	2,634	-0.8
RI	1.4	1.4	5.7	5.6	-1.8
SC	20	20	80	80	
SD	99	96	393	346	-12.0
TN	90	88	305	305	
TX	321	308	1,113	1,202	8.0
UT	93	93	419	432	3.1
VT	152	154	667	665	-0.3
VA	118	119	447	449	0.4
WA	247	248	1,417	1,432	1.1
WV	16	15	63	60	-4.8
WI	1,284	1,266	5,464	5,514	0.9
WY	4.5	4.5	16.2	16.7	3.1
US ³	9,098	9,159	40,570	41,965	3.4

¹ Includes dry cows, excludes heifers not yet fresh.

² Excludes milk sucked by calves.

³ May not add due to rounding.

Reliability Statement

Survey Procedures: Primary data used to determine these estimates were obtained from a sample of producers. Individual States maintain a list of all known milk producers and information on the size of their herd. States use all known sources of producers to ensure that their lists are as complete as possible. Generally, all large producers and a sample of small producers are included in the survey. Questionnaires are mailed to producers near the end of the month to obtain data for the first day of the month. Additional reports are obtained by telephone, as needed, to supplement the mail response. Where feasible, States utilize state and federal administrative data, rather than conduct a monthly or quarterly survey, to estimate milk production. This eliminates duplication of data gathering by different government agencies. Indications of milk cow inventory are also obtained in the January and July Cattle Surveys.

Estimation Procedures: State offices prepare these estimates by using a combination of survey indications, historic trends, and any available administrative data. Individual State estimates are reviewed by the Agricultural Statistics Board for reasonableness.

Revision Policy: Milk production, rate per cow, and number of cows are subject to revision the following month for monthly States or the following quarter for the quarterly States. Normally, Federal Market Order sales are the main basis for revisions. However, data for all orders are not available in time for this revision. Estimates are again subject to revisions in February each year based on additional administrative data. In the event that additional changes are necessary, a third revision is possible in February the following year. Estimates are again reviewed after data from the five-year Census of Agriculture are available. No revisions are made after that date.

Reliability: Since all operations with dairy animals are not included in the sample, survey estimates are subject to sampling variability. Survey results are also subject to non-sampling errors such as omissions, duplications, and mistakes in reporting, recording, and processing the data. The effects of these errors cannot be measured directly. They are minimized through rigid quality controls in the data collection process and through a careful review of all reported data for consistency and reasonableness.

To assist users in evaluating the reliability of the estimates in this report, the "Root Mean Square Error" is shown for selected items on the next page. The "Root Mean Square Error" is a statistical measure based on past performance and is computed using the differences between first and final estimates. The "Root Mean Square Error" for milk cow inventory estimates over the past 10 July-September quarters is 0.9 percent. This means that chances are 2 out of 3 that the final July-September estimate will not be above or below the current estimate of 9.16 million head by more than 0.9 percent. Chances are 9 out of 10 that the difference will not exceed 1.7 percent.

Reliability of July-September Milk Estimates ¹

Item	Root Mean Square Error	90% Confidence Level		Difference Between First and Latest Estimates			Quarters	
				Average	Smallest	Largest	First Above Latest	First Below Latest
				<i>Million Pounds</i>	<i>Million Pounds</i>	<i>Million Pounds</i>	<i>Number</i>	<i>Number</i>
Milk Production	<i>Percent</i> 0.7	<i>Percent</i> 1.2	<i>Million Pounds</i> 504	<i>Million Pounds</i> 226	<i>Million Pounds</i> 34	<i>Million Pounds</i> 380	<i>Number</i> 10	<i>Number</i> 0
All Milk Cows	<i>Percent</i> 0.9	<i>Percent</i> 1.7	<i>1,000 Head</i> 156	<i>1,000 Head</i> 64	<i>1,000 Head</i> 3	<i>1,000 Head</i> 171	<i>Number</i> 8	<i>Number</i> 2

¹ Based on records for the past 10 July-September quarters.

The next "Milk Production" report will be released at 3 p.m. ET on November 15, 2002.

The United States Department of Agriculture (USDA) prohibits discrimination in all its programs on the basis of race, color, national origin, gender, religion, age, disability, political beliefs, sexual orientation, and marital or family status. (Not all prohibited bases apply to all programs.) Persons with disabilities who require alternative means for communication of program information (braille, large print, audiotape, etc.) should contact the USDA's TARGET Center at 202-720-2600 (voice and TDD).

To file a complaint of discrimination, write USDA, Director, Office of Civil Rights, Room 326-W, Whitten Building, 1400 Independence Avenue, SW, Washington, D.C., 20250-9410, or call 202-720-5964 (voice or TDD). USDA is an equal opportunity provider and employer.

ACCESS TO REPORTS!!

For your convenience, there are several ways to obtain NASS reports, data products, and services:

INTERNET ACCESS

All NASS reports are available free of charge on the worldwide Internet. For access, connect to the Internet and go to the NASS Home Page at: <http://www.usda.gov/nass/>. Select "Today's Reports" or Publications and then Reports Calendar or Publications and then Search, by Title or Subject.

E-MAIL SUBSCRIPTION

All NASS reports are available by subscription free of charge direct to your e-mail address. Starting with the NASS Home Page at <http://www.usda.gov/nass/>, click on **Publications**, then click on the **Subscribe by E-mail** button which takes you to the page describing e-mail delivery of reports. Finally, click on **Go to the Subscription Page** and follow the instructions.

AUTOFAX ACCESS

NASSFax service is available for some reports from your fax machine. Please call 202-720-2000, using the handset attached to your fax. Respond to the voice prompts. Document 0411 is a list of available reports.

PRINTED REPORTS OR DATA PRODUCTS

CALL OUR TOLL-FREE ORDER DESK: 800-999-6779 (U.S. and Canada)
Other areas, please call 703-605-6220 FAX: 703-605-6900
(Visa, MasterCard, check, or money order acceptable for payment.)

ASSISTANCE

For **assistance** with general agricultural statistics or further information about NASS or its products or services, contact the **Agricultural Statistics Hotline** at **800-727-9540**, 7:30 a.m. to 4:00 p.m. ET, or e-mail: nass@nass.usda.gov.
