



Milk Production

Released February 14, 2003, by the National Agricultural Statistics Service (NASS), Agricultural Statistics Board, U.S. Department of Agriculture. For information on "Milk Production" call Ty Kalaus at 202-690-3236, office hours 7:00 a.m. to 4:30 p.m. ET.

January Milk Production Up 1.8 Percent

Milk production in the 20 major States during January totaled 12.5 billion pounds, up 1.8 percent from January 2002. December revised production, at 12.3 billion pounds, was up 1.6 percent from December 2001. The December revision represented an increase of 0.6 percent or 70 million pounds from last month's preliminary production estimate.

Production per cow in the 20 major States averaged 1,608 pounds for January, 17 pounds above January 2002.

The number of cows on farms in the 20 major States was 7.81 million head, 56,000 head more than January 2002, and 4,000 head more than December 2002.

2002 Annual Milk Production Up 2.6 Percent from 2001

The annual production of milk for the U.S. during 2002 was 169.8 billion pounds, 2.6 percent above 2001. Revisions to 2001 production increased the annual total by less than 0.1 percent. Revised 2002 production was up 0.1 percent from last month's publication.

Production per cow in the U.S. averaged 18,571 pounds for 2002, 412 pounds above 2001. Average annual rate of milk production per cow has increased 18 percent since 1993.

The average number of milk cows on farms in the U.S. during 2002 was 9.14 million head, up 0.3 percent from 2001. Average number of milk cows was revised down 1,000 head for 2001, and up 2,000 head for 2002 from the previous estimates.

Special Note

Included in this issue are tables with Number of Operations, Percent of Inventory, Percent of Milk Production by Size Group, and a U.S. table which contains additional breakouts for the largest size groups.

This issue also contains monthly, quarterly, and annual revisions for 2001-2002.

Milk Cows and Production: By Quarter, United States, 2002-2003 ¹

| Quarter | Milk Cows ² | | Milk Per Cow ³ | | Milk Production ³ | | |
|---------|------------------------|-------------------|---------------------------|---------------|------------------------------|-----------------------|------------------|
| | 2002 | 2003 | 2002 | 2003 | 2002 | 2003 | Change From 2002 |
| | <i>1,000 Head</i> | <i>1,000 Head</i> | <i>Pounds</i> | <i>Pounds</i> | <i>Million Pounds</i> | <i>Million Pounds</i> | <i>Percent</i> |
| Jan-Mar | 9,112 | | 4,653 | | 42,397 | | |
| Apr-Jun | 9,149 | | 4,811 | | 44,015 | | |
| Jul-Sep | 9,153 | | 4,566 | | 41,791 | | |
| Oct-Dec | 9,148 | | 4,543 | | 41,555 | | |
| Annual | 9,141 | | 18,571 | | 169,758 | | |

¹ May not add due to rounding.

² Includes dry cows, excludes heifers not yet fresh.

³ Excludes milk sucked by calves.

Milk Cows and Production: By Month, 20 Selected States, 2002-2003 ¹

| Month | Milk Cows ² | | Milk Per Cow ³ | | Milk Production ³ | | |
|--------|------------------------|-------------------|---------------------------|---------------|------------------------------|-----------------------|------------------|
| | 2002 | 2003 | 2002 | 2003 | 2002 | 2003 | Change From 2002 |
| | <i>1,000 Head</i> | <i>1,000 Head</i> | <i>Pounds</i> | <i>Pounds</i> | <i>Million Pounds</i> | <i>Million Pounds</i> | <i>Percent</i> |
| Jan | 7,749 | 7,805 | 1,591 | 1,608 | 12,327 | 12,547 | 1.8 |
| Feb | 7,744 | | 1,472 | | 11,401 | | |
| Mar | 7,745 | | 1,654 | | 12,810 | | |
| Apr | 7,758 | | 1,621 | | 12,575 | | |
| May | 7,769 | | 1,678 | | 13,039 | | |
| Jun | 7,782 | | 1,587 | | 12,348 | | |
| Jul | 7,781 | | 1,578 | | 12,281 | | |
| Aug | 7,785 | | 1,570 | | 12,223 | | |
| Sep | 7,781 | | 1,497 | | 11,648 | | |
| Oct | 7,789 | | 1,539 | | 11,991 | | |
| Nov | 7,792 | | 1,496 | | 11,657 | | |
| Dec | 7,801 | | 1,575 | | 12,290 | | |
| Annual | 7,773 | | 18,858 | | 146,590 | | |

¹ 2002 revised.

² Includes dry cows, excludes heifers not yet fresh.

³ Excludes milk sucked by calves.

Estimated Milk Cows and Production: By Month, United States, 2002-2003 ¹

| Month | Milk Cows ² | | Milk Per Cow ³ | | Milk Production ³ | | |
|--------|------------------------|-------------------|---------------------------|---------------|------------------------------|-----------------------|------------------|
| | 2002 | 2003 | 2002 | 2003 | 2002 | 2003 | Change From 2002 |
| | <i>1,000 Head</i> | <i>1,000 Head</i> | <i>Pounds</i> | <i>Pounds</i> | <i>Million Pounds</i> | <i>Million Pounds</i> | <i>Percent</i> |
| Jan | 9,117 | 9,153 | 1,569 | 1,591 | 14,304 | 14,559 | 1.8 |
| Feb | 9,109 | | 1,452 | | 13,229 | | |
| Mar | 9,110 | | 1,632 | | 14,864 | | |
| Apr | 9,132 | | 1,597 | | 14,580 | | |
| May | 9,149 | | 1,652 | | 15,118 | | |
| Jun | 9,166 | | 1,562 | | 14,317 | | |
| Jul | 9,158 | | 1,550 | | 14,196 | | |
| Aug | 9,157 | | 1,543 | | 14,128 | | |
| Sep | 9,145 | | 1,473 | | 13,467 | | |
| Oct | 9,147 | | 1,516 | | 13,866 | | |
| Nov | 9,146 | | 1,474 | | 13,478 | | |
| Dec | 9,150 | | 1,553 | | 14,211 | | |
| Annual | 9,141 | | 18,571 | | 169,758 | | |

¹ 2002 revised.

² Includes dry cows, excludes heifers not yet fresh.

³ Excludes milk sucked by calves.

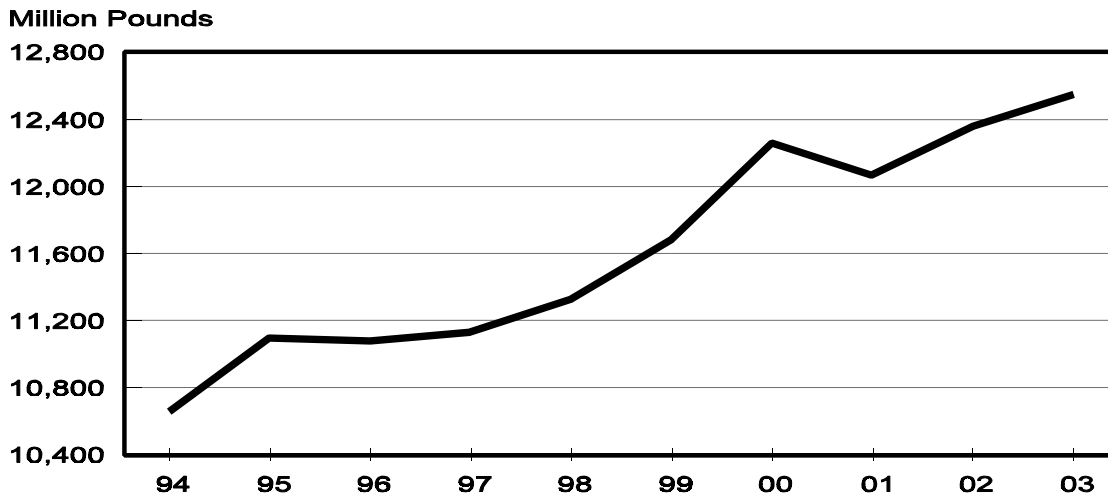
Milk Cows and Production: By State, January 2002-2003

| State | Milk Cows ¹ | | Milk Per Cow ² | | Milk Production ² | | Change From 2002 |
|----------------|------------------------|-------------------|---------------------------|---------------|------------------------------|-----------------------|------------------|
| | 2002 | 2003 | 2002 | 2003 | 2002 | 2003 | |
| | <i>1,000 Head</i> | <i>1,000 Head</i> | <i>Pounds</i> | <i>Pounds</i> | <i>Million Pounds</i> | <i>Million Pounds</i> | <i>Percent</i> |
| AZ | 140 | 150 | 2,085 | 2,035 | 292 | 305 | 4.5 |
| CA | 1,624 | 1,681 | 1,745 | 1,770 | 2,834 | 2,975 | 5.0 |
| FL | 152 | 147 | 1,410 | 1,405 | 214 | 207 | -3.3 |
| ID | 380 | 390 | 1,750 | 1,770 | 665 | 690 | 3.8 |
| IL | 115 | 114 | 1,550 | 1,580 | 178 | 180 | 1.1 |
| IN | 155 | 146 | 1,450 | 1,535 | 225 | 224 | -0.4 |
| IA | 206 | 207 | 1,560 | 1,595 | 321 | 330 | 2.8 |
| KY | 123 | 120 | 1,170 | 1,100 | 144 | 132 | -8.3 |
| MI | 297 | 301 | 1,650 | 1,710 | 490 | 515 | 5.1 |
| MN | 495 | 480 | 1,515 | 1,520 | 750 | 730 | -2.7 |
| MO | 140 | 134 | 1,210 | 1,240 | 169 | 166 | -1.8 |
| NM | 290 | 310 | 1,740 | 1,740 | 505 | 539 | 6.7 |
| NY | 675 | 680 | 1,530 | 1,530 | 1,033 | 1,040 | 0.7 |
| OH | 260 | 260 | 1,480 | 1,440 | 385 | 374 | -2.9 |
| PA | 587 | 590 | 1,570 | 1,540 | 922 | 909 | -1.4 |
| TX | 310 | 311 | 1,490 | 1,550 | 462 | 482 | 4.3 |
| VT | 154 | 153 | 1,510 | 1,495 | 233 | 229 | -1.7 |
| VA | 120 | 118 | 1,390 | 1,340 | 167 | 158 | -5.4 |
| WA | 247 | 248 | 1,880 | 1,925 | 464 | 477 | 2.8 |
| WI | 1,279 | 1,265 | 1,465 | 1,490 | 1,874 | 1,885 | 0.6 |
| 20-State Total | 7,749 | 7,805 | 1,591 | 1,608 | 12,327 | 12,547 | 1.8 |

¹ Includes dry cows, excludes heifers not yet fresh.

² Excludes milk sucked by calves.

**January Milk Production, 1994-2003
20 States**



Milk Cows and Production: By State, December 2001-2002 ¹

| State | Milk Cows ² | | Milk per Cow ³ | | Milk Production ³ | | |
|----------------|------------------------|-------------------|---------------------------|---------------|------------------------------|-----------------------|------------------|
| | 2001 | 2002 | 2001 | 2002 | 2001 | 2002 | Change From 2001 |
| | <i>1,000 Head</i> | <i>1,000 Head</i> | <i>Pounds</i> | <i>Pounds</i> | <i>Million Pounds</i> | <i>Million Pounds</i> | <i>Percent</i> |
| AZ | 140 | 150 | 1,915 | 1,920 | 268 | 288 | 7.5 |
| CA | 1,619 | 1,676 | 1,735 | 1,750 | 2,809 | 2,933 | 4.4 |
| FL | 152 | 147 | 1,320 | 1,325 | 201 | 195 | -3.0 |
| ID | 377 | 390 | 1,750 | 1,780 | 660 | 694 | 5.2 |
| IL | 115 | 115 | 1,490 | 1,505 | 171 | 173 | 1.2 |
| IN | 155 | 146 | 1,460 | 1,515 | 226 | 221 | -2.2 |
| IA | 206 | 208 | 1,550 | 1,550 | 319 | 322 | 0.9 |
| KY | 125 | 120 | 1,130 | 1,075 | 141 | 129 | -8.5 |
| MI | 299 | 301 | 1,675 | 1,675 | 501 | 504 | 0.6 |
| MN | 500 | 480 | 1,460 | 1,485 | 730 | 713 | -2.3 |
| MO | 141 | 134 | 1,145 | 1,210 | 161 | 162 | 0.6 |
| NM | 288 | 308 | 1,700 | 1,710 | 490 | 527 | 7.6 |
| NY | 675 | 680 | 1,510 | 1,490 | 1,019 | 1,013 | -0.6 |
| OH | 258 | 260 | 1,450 | 1,405 | 374 | 365 | -2.4 |
| PA | 592 | 590 | 1,540 | 1,515 | 912 | 894 | -2.0 |
| TX | 310 | 311 | 1,390 | 1,465 | 431 | 456 | 5.8 |
| VT | 154 | 153 | 1,490 | 1,470 | 229 | 225 | -1.7 |
| VA | 119 | 119 | 1,385 | 1,295 | 165 | 154 | -6.7 |
| WA | 247 | 247 | 1,845 | 1,890 | 456 | 467 | 2.4 |
| WI | 1,280 | 1,266 | 1,435 | 1,465 | 1,837 | 1,855 | 1.0 |
| 20-State Total | 7,752 | 7,801 | 1,561 | 1,575 | 12,100 | 12,290 | 1.6 |

¹ 2002 revised.

² Includes dry cows, excludes heifers not yet fresh.

³ Excludes milk sucked by calves.

**January Milk Cows, 1994-2003
20 States**



Milk Cows and Production: United States, 1993-2002 ¹

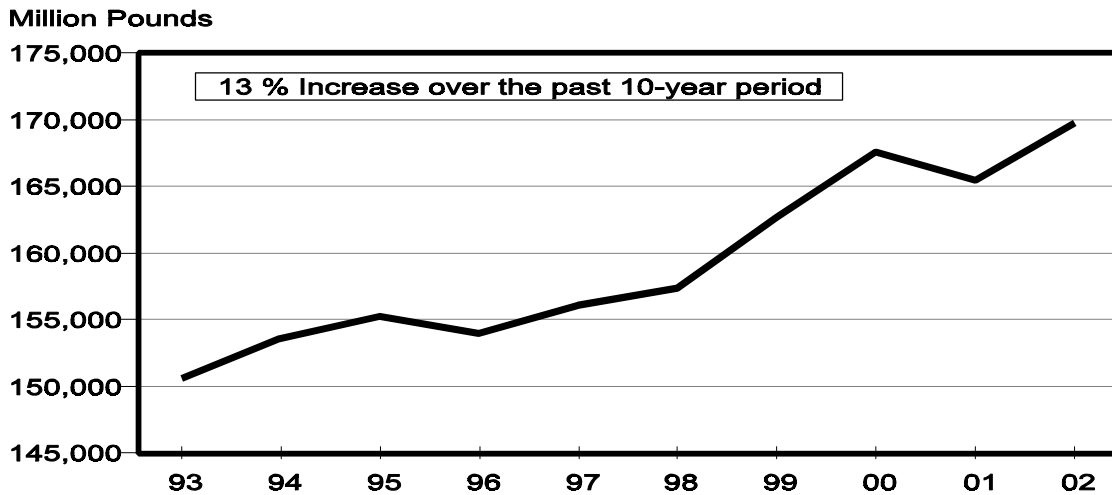
| Year | Milk Cows ² <i>1,000 Head</i> | Production per Cow ³ | | Milk Production ³ |
|------|---|---------------------------------|---------|--------------------------------|
| | | Milk <i>Pounds</i> | | Total <i>Million Pounds</i> |
| 1993 | 9,581 | 15,722 | 150,636 | |
| 1994 | 9,494 | 16,179 | 153,602 | |
| 1995 | 9,466 | 16,405 | 155,292 | |
| 1996 | 9,372 | 16,433 | 154,006 | |
| 1997 | 9,252 | 16,871 | 156,091 | |
| 1998 | 9,154 | 17,189 | 157,348 | |
| 1999 | 9,156 | 17,772 | 162,716 | |
| 2000 | 9,206 | 18,201 | 167,559 | |
| 2001 | 9,114 | 18,159 | 165,497 | |
| 2002 | 9,141 | 18,571 | 169,758 | |

¹ May not add due to rounding.

² Average number during year, excluding heifers not yet fresh.

³ Excludes milk sucked by calves.

**Milk Production, 1993-2002
United States**



Milk Cows and Production: By State and United States, 2001-2002

| State | Milk Cows ¹ | | Milk Per Cow ² | | Milk Production ² | | Change From 2001 |
|-----------------|------------------------|-------------------|---------------------------|---------------|------------------------------|-----------------------|------------------|
| | 2001 | 2002 | 2001 | 2002 | 2001 | 2002 | |
| | <i>1,000 Head</i> | <i>1,000 Head</i> | <i>Pounds</i> | <i>Pounds</i> | <i>Million Pounds</i> | <i>Million Pounds</i> | <i>Percent</i> |
| AL | 21 | 20 | 14,286 | 13,850 | 300 | 277 | -7.7 |
| AK | 1.1 | 1.3 | 13,055 | 13,600 | 14.36 | 17.68 | 23.1 |
| AZ | 140 | 146 | 21,950 | 23,486 | 3,073 | 3,429 | 11.6 |
| AR | 35 | 32 | 12,343 | 12,281 | 432 | 393 | -9.0 |
| CA | 1,589 | 1,647 | 20,904 | 21,180 | 33,217 | 34,884 | 5.0 |
| CO | 92 | 100 | 21,413 | 21,590 | 1,970 | 2,159 | 9.6 |
| CT | 25 | 24 | 18,240 | 18,625 | 456 | 447 | -2.0 |
| DE | 9.0 | 9.3 | 16,667 | 16,559 | 150.0 | 154.0 | 2.7 |
| FL | 153 | 150 | 15,758 | 15,547 | 2,411 | 2,332 | -3.3 |
| GA | 86 | 85 | 16,663 | 17,294 | 1,433 | 1,470 | 2.6 |
| HI | 7.5 | 6.6 | 14,107 | 14,667 | 105.8 | 96.8 | -8.5 |
| ID | 366 | 388 | 21,194 | 21,018 | 7,757 | 8,155 | 5.1 |
| IL | 116 | 115 | 17,414 | 17,835 | 2,020 | 2,051 | 1.5 |
| IN | 153 | 150 | 16,778 | 17,340 | 2,567 | 2,601 | 1.3 |
| IA | 210 | 209 | 18,024 | 18,201 | 3,785 | 3,804 | 0.5 |
| KS | 93 | 103 | 17,312 | 19,515 | 1,610 | 2,010 | 24.8 |
| KY | 128 | 122 | 12,969 | 13,230 | 1,660 | 1,614 | -2.8 |
| LA | 54 | 50 | 11,704 | 11,620 | 632 | 581 | -8.1 |
| ME | 38 | 37 | 17,211 | 17,730 | 654 | 656 | 0.3 |
| MD | 82 | 81 | 15,780 | 16,383 | 1,294 | 1,327 | 2.6 |
| MA | 21 | 21 | 17,000 | 17,190 | 357 | 361 | 1.1 |
| MI | 303 | 299 | 19,373 | 19,883 | 5,870 | 5,945 | 1.3 |
| MN | 510 | 487 | 17,278 | 17,368 | 8,812 | 8,458 | -4.0 |
| MS | 35 | 34 | 14,200 | 14,059 | 497 | 478 | -3.8 |
| MO | 145 | 137 | 13,441 | 14,204 | 1,949 | 1,946 | -0.2 |
| MT | 19 | 18 | 18,211 | 18,944 | 346 | 341 | -1.4 |
| NE | 72 | 67 | 16,194 | 17,463 | 1,166 | 1,170 | 0.3 |
| NV | 25 | 25 | 19,400 | 19,400 | 485 | 485 | |
| NH | 18 | 18 | 17,889 | 18,222 | 322 | 328 | 1.9 |
| NJ | 14 | 13 | 16,643 | 18,154 | 233 | 236 | 1.3 |
| NM | 268 | 299 | 20,750 | 21,124 | 5,561 | 6,316 | 13.6 |
| NY | 672 | 678 | 17,530 | 18,019 | 11,780 | 12,217 | 3.7 |
| NC | 67 | 64 | 17,224 | 17,766 | 1,154 | 1,137 | -1.5 |
| ND | 46 | 40 | 14,000 | 14,625 | 644 | 585 | -9.2 |
| OH | 260 | 262 | 16,519 | 17,080 | 4,295 | 4,475 | 4.2 |
| OK | 89 | 88 | 14,528 | 14,705 | 1,293 | 1,294 | 0.1 |
| OR | 95 | 114 | 18,074 | 18,360 | 1,717 | 2,093 | 21.9 |
| PA | 599 | 585 | 18,112 | 18,419 | 10,849 | 10,775 | -0.7 |
| RI | 1.4 | 1.4 | 16,571 | 16,357 | 23.2 | 22.9 | -1.3 |
| SC | 21 | 20 | 17,476 | 18,200 | 367 | 364 | -0.8 |
| SD | 99 | 96 | 15,960 | 14,625 | 1,580 | 1,404 | -11.1 |
| TN | 92 | 88 | 14,511 | 14,943 | 1,335 | 1,315 | -1.5 |
| TX | 325 | 309 | 15,711 | 17,152 | 5,106 | 5,300 | 3.8 |
| UT | 93 | 93 | 17,581 | 17,839 | 1,635 | 1,659 | 1.5 |
| VT | 153 | 154 | 17,444 | 17,552 | 2,669 | 2,703 | 1.3 |
| VA | 118 | 120 | 15,975 | 15,758 | 1,885 | 1,891 | 0.3 |
| WA | 247 | 247 | 22,324 | 22,753 | 5,514 | 5,620 | 1.9 |
| WV | 16 | 16 | 15,563 | 15,188 | 249 | 243 | -2.4 |
| WI | 1,292 | 1,271 | 17,182 | 17,367 | 22,199 | 22,074 | -0.6 |
| WY | 4.5 | 4.4 | 14,000 | 14,409 | 63.0 | 63.4 | 0.6 |
| US ³ | 9,114 | 9,141 | 18,159 | 18,571 | 165,497 | 169,758 | 2.6 |

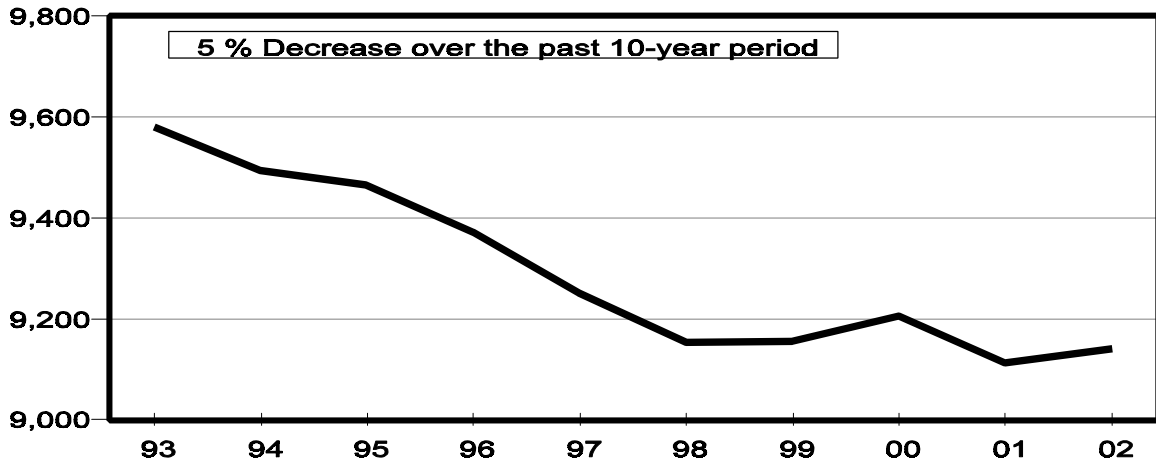
¹ Average number during year, excluding heifers not yet fresh.

² Excludes milk sucked by calves.

³ May not add due to rounding.

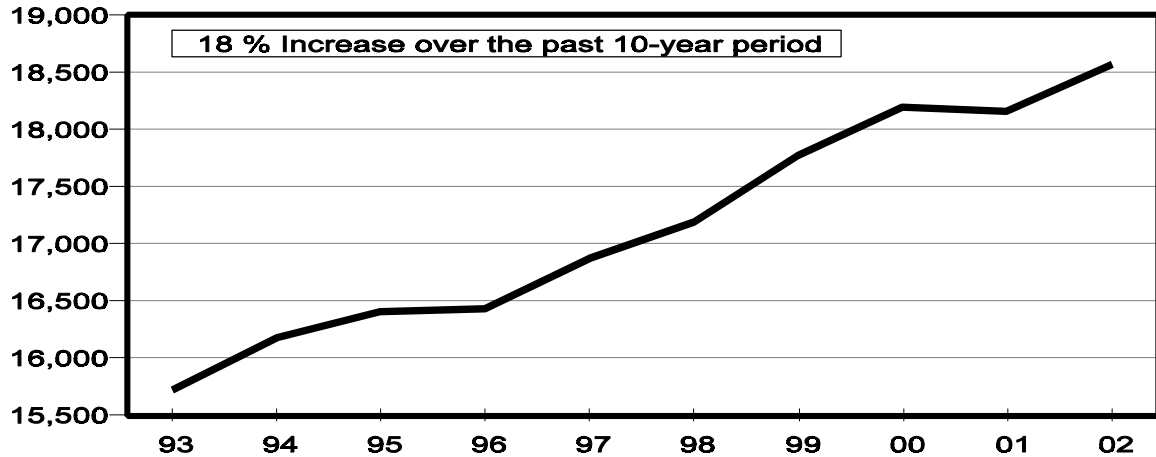
Milk Cows, 1993-2002 United States

Thousand Head



Rate per Cow, 1993-2002 United States

Pounds



Milk Cows: Number by Month, State, and 20 State Total, 2001¹

| State | Jan | Feb | Mar | Apr | May | Jun | |
|--------|-------------------|-------------------|-------------------|-------------------|-------------------|-------------------|--------------------------|
| | <i>1,000 Head</i> | <i>1,000 Head</i> | <i>1,000 Head</i> | <i>1,000 Head</i> | <i>1,000 Head</i> | <i>1,000 Head</i> | |
| AZ | 140 | 140 | 140 | 140 | 140 | 140 | |
| CA | 1,563 | 1,566 | 1,570 | 1,575 | 1,581 | 1,586 | |
| FL | 155 | 155 | 154 | 154 | 154 | 154 | |
| ID | 356 | 357 | 358 | 360 | 364 | 369 | |
| IL | 118 | 117 | 117 | 117 | 116 | 115 | |
| IN | 151 | 151 | 151 | 152 | 152 | 154 | |
| IA | 215 | 215 | 213 | 212 | 211 | 210 | |
| KY | 130 | 128 | 127 | 128 | 129 | 130 | |
| MI | 303 | 303 | 304 | 304 | 304 | 305 | |
| MN | 520 | 520 | 515 | 515 | 515 | 510 | |
| MO | 149 | 148 | 148 | 148 | 148 | 148 | |
| NM | 261 | 261 | 261 | 261 | 261 | 263 | |
| NY | 670 | 670 | 670 | 670 | 670 | 673 | |
| OH | 264 | 263 | 262 | 261 | 261 | 260 | |
| PA | 607 | 602 | 600 | 599 | 599 | 600 | |
| TX | 341 | 338 | 335 | 332 | 329 | 326 | |
| VT | 154 | 153 | 152 | 152 | 152 | 152 | |
| VA | 118 | 118 | 118 | 118 | 118 | 118 | |
| WA | 247 | 247 | 246 | 246 | 246 | 247 | |
| WI | 1,322 | 1,310 | 1,300 | 1,295 | 1,295 | 1,290 | |
| 20-Sts | 7,784 | 7,762 | 7,741 | 7,739 | 7,745 | 7,750 | |
| | Jul | Aug | Sep | Oct | Nov | Dec | Annual Avg. ² |
| AZ | 140 | 140 | 140 | 140 | 140 | 140 | 140 |
| CA | 1,591 | 1,596 | 1,602 | 1,607 | 1,613 | 1,619 | 1,589 |
| FL | 153 | 153 | 152 | 152 | 152 | 152 | 153 |
| ID | 370 | 370 | 369 | 369 | 372 | 377 | 366 |
| IL | 115 | 115 | 115 | 114 | 115 | 115 | 116 |
| IN | 154 | 154 | 154 | 154 | 155 | 155 | 153 |
| IA | 209 | 207 | 206 | 206 | 206 | 206 | 210 |
| KY | 129 | 128 | 127 | 126 | 125 | 125 | 128 |
| MI | 303 | 303 | 303 | 302 | 301 | 299 | 303 |
| MN | 510 | 505 | 505 | 500 | 500 | 500 | 510 |
| MO | 146 | 144 | 142 | 141 | 141 | 141 | 145 |
| NM | 265 | 268 | 270 | 273 | 280 | 288 | 268 |
| NY | 673 | 673 | 673 | 673 | 674 | 675 | 672 |
| OH | 258 | 258 | 257 | 257 | 256 | 258 | 260 |
| PA | 600 | 598 | 596 | 596 | 596 | 592 | 599 |
| TX | 324 | 322 | 318 | 315 | 312 | 310 | 325 |
| VT | 152 | 152 | 152 | 153 | 154 | 154 | 153 |
| VA | 118 | 118 | 118 | 118 | 119 | 119 | 118 |
| WA | 247 | 247 | 247 | 247 | 247 | 247 | 247 |
| WI | 1,288 | 1,282 | 1,282 | 1,281 | 1,280 | 1,280 | 1,292 |
| 20-Sts | 7,745 | 7,733 | 7,728 | 7,724 | 7,738 | 7,752 | 7,745 |

¹ Includes dry cows, excludes heifers not yet fresh.

² Average based on monthly totals.

Milk Cows: Number by Month, State, and 20 State Total, 2002¹

| State | Jan | Feb | Mar | Apr | May | Jun | |
|--------|-------------------|-------------------|-------------------|-------------------|-------------------|-------------------|--------------------------|
| | <i>1,000 Head</i> | <i>1,000 Head</i> | <i>1,000 Head</i> | <i>1,000 Head</i> | <i>1,000 Head</i> | <i>1,000 Head</i> | |
| AZ | 140 | 142 | 143 | 144 | 145 | 145 | |
| CA | 1,624 | 1,626 | 1,631 | 1,635 | 1,639 | 1,645 | |
| FL | 152 | 152 | 151 | 151 | 151 | 150 | |
| ID | 380 | 381 | 381 | 382 | 387 | 391 | |
| IL | 115 | 115 | 115 | 115 | 115 | 115 | |
| IN | 155 | 154 | 153 | 152 | 152 | 151 | |
| IA | 206 | 208 | 209 | 209 | 209 | 210 | |
| KY | 123 | 123 | 123 | 123 | 123 | 123 | |
| MI | 297 | 295 | 295 | 296 | 298 | 300 | |
| MN | 495 | 495 | 490 | 490 | 490 | 490 | |
| MO | 140 | 139 | 138 | 138 | 137 | 137 | |
| NM | 290 | 290 | 293 | 295 | 296 | 298 | |
| NY | 675 | 672 | 675 | 680 | 682 | 682 | |
| OH | 260 | 260 | 261 | 262 | 263 | 264 | |
| PA | 587 | 583 | 581 | 581 | 580 | 582 | |
| TX | 310 | 310 | 309 | 309 | 309 | 307 | |
| VT | 154 | 154 | 154 | 154 | 154 | 154 | |
| VA | 120 | 120 | 120 | 120 | 120 | 120 | |
| WA | 247 | 247 | 247 | 247 | 247 | 248 | |
| WI | 1,279 | 1,278 | 1,276 | 1,275 | 1,272 | 1,270 | |
| 20-Sts | 7,749 | 7,744 | 7,745 | 7,758 | 7,769 | 7,782 | |
| | Jul | Aug | Sep | Oct | Nov | Dec | Annual Avg. ² |
| AZ | 148 | 150 | 150 | 150 | 150 | 150 | 146 |
| CA | 1,647 | 1,651 | 1,658 | 1,664 | 1,669 | 1,676 | 1,647 |
| FL | 149 | 149 | 148 | 147 | 147 | 147 | 150 |
| ID | 392 | 395 | 392 | 391 | 390 | 390 | 388 |
| IL | 115 | 115 | 115 | 115 | 115 | 115 | 115 |
| IN | 150 | 148 | 147 | 147 | 147 | 146 | 150 |
| IA | 210 | 210 | 209 | 208 | 208 | 208 | 209 |
| KY | 123 | 122 | 120 | 120 | 120 | 120 | 122 |
| MI | 301 | 301 | 300 | 300 | 301 | 301 | 299 |
| MN | 485 | 485 | 480 | 480 | 480 | 480 | 487 |
| MO | 137 | 136 | 136 | 136 | 135 | 134 | 137 |
| NM | 303 | 305 | 305 | 305 | 305 | 308 | 299 |
| NY | 680 | 676 | 675 | 676 | 678 | 680 | 678 |
| OH | 263 | 263 | 262 | 262 | 261 | 260 | 262 |
| PA | 584 | 585 | 587 | 591 | 591 | 590 | 585 |
| TX | 307 | 308 | 310 | 310 | 310 | 311 | 309 |
| VT | 154 | 154 | 153 | 153 | 153 | 153 | 154 |
| VA | 120 | 119 | 119 | 119 | 119 | 119 | 120 |
| WA | 248 | 248 | 247 | 247 | 247 | 247 | 247 |
| WI | 1,265 | 1,265 | 1,268 | 1,268 | 1,266 | 1,266 | 1,271 |
| 20-Sts | 7,781 | 7,785 | 7,781 | 7,789 | 7,792 | 7,801 | 7,773 |

¹ Includes dry cows, excludes heifers not yet fresh.

² Average based on monthly totals.

**Milk Produced per Cow: by Month,
State, and 20 States, 2001¹**

| State | Jan | Feb | Mar | Apr | May | Jun | |
|--------|---------------|---------------|---------------|---------------|---------------|---------------|-------------|
| | <i>Pounds</i> | <i>Pounds</i> | <i>Pounds</i> | <i>Pounds</i> | <i>Pounds</i> | <i>Pounds</i> | |
| AZ | 1,850 | 1,735 | 2,020 | 1,970 | 2,010 | 1,860 | |
| CA | 1,760 | 1,615 | 1,790 | 1,770 | 1,825 | 1,755 | |
| FL | 1,440 | 1,380 | 1,580 | 1,475 | 1,515 | 1,330 | |
| ID | 1,740 | 1,580 | 1,770 | 1,740 | 1,830 | 1,780 | |
| IL | 1,470 | 1,380 | 1,580 | 1,555 | 1,610 | 1,480 | |
| IN | 1,455 | 1,295 | 1,450 | 1,420 | 1,470 | 1,420 | |
| IA | 1,525 | 1,410 | 1,570 | 1,545 | 1,610 | 1,495 | |
| KY | 1,090 | 1,040 | 1,180 | 1,180 | 1,200 | 1,075 | |
| MI | 1,590 | 1,475 | 1,660 | 1,620 | 1,705 | 1,655 | |
| MN | 1,520 | 1,385 | 1,545 | 1,495 | 1,525 | 1,465 | |
| MO | 1,150 | 1,070 | 1,200 | 1,265 | 1,255 | 1,140 | |
| NM | 1,680 | 1,550 | 1,760 | 1,760 | 1,870 | 1,790 | |
| NY | 1,460 | 1,315 | 1,480 | 1,450 | 1,540 | 1,485 | |
| OH | 1,340 | 1,240 | 1,410 | 1,390 | 1,470 | 1,370 | |
| PA | 1,520 | 1,420 | 1,580 | 1,540 | 1,600 | 1,520 | |
| TX | 1,365 | 1,285 | 1,460 | 1,435 | 1,450 | 1,310 | |
| VT | 1,450 | 1,330 | 1,490 | 1,455 | 1,550 | 1,480 | |
| VA | 1,380 | 1,280 | 1,425 | 1,380 | 1,415 | 1,305 | |
| WA | 1,845 | 1,680 | 1,885 | 1,860 | 1,950 | 1,900 | |
| WI | 1,445 | 1,335 | 1,495 | 1,460 | 1,530 | 1,460 | |
| 20-Sts | 1,550 | 1,428 | 1,601 | 1,572 | 1,635 | 1,557 | |
| | Jul | Aug | Sep | Oct | Nov | Dec | Annual Avg. |
| AZ | 1,725 | 1,625 | 1,650 | 1,800 | 1,785 | 1,915 | 21,950 |
| CA | 1,770 | 1,765 | 1,690 | 1,745 | 1,685 | 1,735 | 20,904 |
| FL | 1,235 | 1,115 | 1,030 | 1,120 | 1,170 | 1,320 | 15,758 |
| ID | 1,840 | 1,840 | 1,770 | 1,820 | 1,730 | 1,750 | 21,194 |
| IL | 1,405 | 1,370 | 1,345 | 1,390 | 1,375 | 1,490 | 17,414 |
| IN | 1,395 | 1,345 | 1,310 | 1,375 | 1,370 | 1,460 | 16,778 |
| IA | 1,475 | 1,475 | 1,430 | 1,480 | 1,485 | 1,550 | 18,024 |
| KY | 1,045 | 1,000 | 975 | 1,030 | 1,050 | 1,130 | 12,969 |
| MI | 1,645 | 1,615 | 1,570 | 1,600 | 1,575 | 1,675 | 19,373 |
| MN | 1,425 | 1,365 | 1,340 | 1,395 | 1,365 | 1,460 | 17,278 |
| MO | 1,055 | 975 | 985 | 1,085 | 1,080 | 1,145 | 13,441 |
| NM | 1,790 | 1,770 | 1,700 | 1,750 | 1,665 | 1,700 | 20,750 |
| NY | 1,510 | 1,470 | 1,425 | 1,460 | 1,425 | 1,510 | 17,530 |
| OH | 1,410 | 1,375 | 1,340 | 1,380 | 1,370 | 1,450 | 16,519 |
| PA | 1,510 | 1,480 | 1,450 | 1,500 | 1,460 | 1,540 | 18,112 |
| TX | 1,210 | 1,145 | 1,120 | 1,245 | 1,275 | 1,390 | 15,711 |
| VT | 1,505 | 1,460 | 1,420 | 1,450 | 1,410 | 1,490 | 17,444 |
| VA | 1,305 | 1,255 | 1,235 | 1,295 | 1,285 | 1,385 | 15,975 |
| WA | 1,960 | 1,945 | 1,835 | 1,860 | 1,780 | 1,845 | 22,324 |
| WI | 1,455 | 1,415 | 1,385 | 1,400 | 1,365 | 1,435 | 17,182 |
| 20-Sts | 1,552 | 1,519 | 1,474 | 1,523 | 1,487 | 1,561 | 18,459 |

¹ Excludes milk sucked by calves.

**Milk Produced per Cow: by Month,
State, and 20 States, 2002¹**

| State | Jan | Feb | Mar | Apr | May | Jun | |
|--------|---------------|---------------|---------------|---------------|---------------|---------------|-------------|
| | <i>Pounds</i> | <i>Pounds</i> | <i>Pounds</i> | <i>Pounds</i> | <i>Pounds</i> | <i>Pounds</i> | |
| AZ | 2,085 | 1,970 | 2,250 | 2,195 | 2,200 | 1,985 | |
| CA | 1,745 | 1,620 | 1,830 | 1,795 | 1,875 | 1,800 | |
| FL | 1,410 | 1,335 | 1,505 | 1,455 | 1,460 | 1,340 | |
| ID | 1,750 | 1,590 | 1,760 | 1,740 | 1,820 | 1,770 | |
| IL | 1,550 | 1,440 | 1,620 | 1,610 | 1,630 | 1,470 | |
| IN | 1,450 | 1,340 | 1,495 | 1,480 | 1,545 | 1,440 | |
| IA | 1,560 | 1,430 | 1,615 | 1,585 | 1,630 | 1,510 | |
| KY | 1,170 | 1,100 | 1,245 | 1,240 | 1,230 | 1,080 | |
| MI | 1,650 | 1,545 | 1,730 | 1,675 | 1,745 | 1,665 | |
| MN | 1,515 | 1,385 | 1,560 | 1,510 | 1,540 | 1,445 | |
| MO | 1,210 | 1,150 | 1,335 | 1,325 | 1,315 | 1,170 | |
| NM | 1,740 | 1,610 | 1,830 | 1,815 | 1,910 | 1,810 | |
| NY | 1,530 | 1,405 | 1,565 | 1,520 | 1,600 | 1,530 | |
| OH | 1,480 | 1,365 | 1,500 | 1,470 | 1,550 | 1,425 | |
| PA | 1,570 | 1,460 | 1,630 | 1,600 | 1,650 | 1,535 | |
| TX | 1,490 | 1,400 | 1,605 | 1,585 | 1,570 | 1,430 | |
| VT | 1,510 | 1,375 | 1,530 | 1,495 | 1,570 | 1,500 | |
| VA | 1,390 | 1,290 | 1,450 | 1,410 | 1,425 | 1,300 | |
| WA | 1,880 | 1,735 | 1,930 | 1,910 | 2,005 | 1,925 | |
| WI | 1,465 | 1,350 | 1,510 | 1,475 | 1,525 | 1,455 | |
| 20-Sts | 1,591 | 1,472 | 1,654 | 1,621 | 1,678 | 1,587 | |
| | Jul | Aug | Sep | Oct | Nov | Dec | Annual Avg. |
| AZ | 1,850 | 1,785 | 1,660 | 1,750 | 1,800 | 1,920 | 23,486 |
| CA | 1,810 | 1,810 | 1,700 | 1,760 | 1,685 | 1,750 | 21,180 |
| FL | 1,250 | 1,195 | 1,050 | 1,110 | 1,155 | 1,325 | 15,547 |
| ID | 1,810 | 1,830 | 1,730 | 1,760 | 1,690 | 1,780 | 21,018 |
| IL | 1,420 | 1,395 | 1,365 | 1,430 | 1,420 | 1,505 | 17,835 |
| IN | 1,410 | 1,410 | 1,375 | 1,435 | 1,420 | 1,515 | 17,340 |
| IA | 1,495 | 1,480 | 1,425 | 1,480 | 1,470 | 1,550 | 18,201 |
| KY | 1,035 | 1,025 | 990 | 1,025 | 1,020 | 1,075 | 13,230 |
| MI | 1,665 | 1,680 | 1,605 | 1,650 | 1,610 | 1,675 | 19,883 |
| MN | 1,415 | 1,410 | 1,340 | 1,390 | 1,380 | 1,485 | 17,368 |
| MO | 1,120 | 1,090 | 1,050 | 1,120 | 1,125 | 1,210 | 14,204 |
| NM | 1,810 | 1,765 | 1,700 | 1,750 | 1,650 | 1,710 | 21,124 |
| NY | 1,535 | 1,505 | 1,455 | 1,485 | 1,410 | 1,490 | 18,019 |
| OH | 1,390 | 1,390 | 1,360 | 1,410 | 1,350 | 1,405 | 17,080 |
| PA | 1,525 | 1,515 | 1,460 | 1,495 | 1,460 | 1,515 | 18,419 |
| TX | 1,355 | 1,290 | 1,255 | 1,350 | 1,345 | 1,465 | 17,152 |
| VT | 1,480 | 1,450 | 1,400 | 1,425 | 1,380 | 1,470 | 17,552 |
| VA | 1,275 | 1,250 | 1,225 | 1,260 | 1,235 | 1,295 | 15,758 |
| WA | 1,965 | 1,965 | 1,855 | 1,870 | 1,800 | 1,890 | 22,753 |
| WI | 1,455 | 1,470 | 1,405 | 1,410 | 1,385 | 1,465 | 17,367 |
| 20-Sts | 1,578 | 1,570 | 1,497 | 1,539 | 1,496 | 1,575 | 18,858 |

¹ Excludes milk sucked by calves.

**Milk Production: Total by Month, State,
and 20 States, 2001¹**

| State | Jan | Feb | Mar | Apr | May | Jun | |
|--------|-----------------------|-----------------------|-----------------------|-----------------------|-----------------------|-----------------------|---------------------------|
| | <i>Million Pounds</i> | <i>Million Pounds</i> | <i>Million Pounds</i> | <i>Million Pounds</i> | <i>Million Pounds</i> | <i>Million Pounds</i> | |
| AZ | 259 | 243 | 283 | 276 | 281 | 260 | |
| CA | 2,751 | 2,529 | 2,810 | 2,788 | 2,885 | 2,783 | |
| FL | 223 | 214 | 243 | 227 | 233 | 205 | |
| ID | 619 | 564 | 634 | 626 | 666 | 657 | |
| IL | 173 | 161 | 185 | 182 | 187 | 170 | |
| IN | 220 | 196 | 219 | 216 | 223 | 219 | |
| IA | 328 | 303 | 334 | 328 | 340 | 314 | |
| KY | 142 | 133 | 150 | 151 | 155 | 140 | |
| MI | 482 | 447 | 505 | 492 | 518 | 505 | |
| MN | 790 | 720 | 796 | 770 | 785 | 747 | |
| MO | 171 | 158 | 178 | 187 | 186 | 169 | |
| NM | 438 | 405 | 459 | 459 | 488 | 471 | |
| NY | 978 | 881 | 992 | 972 | 1,032 | 999 | |
| OH | 354 | 326 | 369 | 363 | 384 | 356 | |
| PA | 923 | 855 | 948 | 922 | 958 | 912 | |
| TX | 465 | 434 | 489 | 476 | 477 | 427 | |
| VT | 223 | 203 | 226 | 221 | 236 | 225 | |
| VA | 163 | 151 | 168 | 163 | 167 | 154 | |
| WA | 456 | 415 | 464 | 458 | 480 | 469 | |
| WI | 1,910 | 1,749 | 1,944 | 1,891 | 1,981 | 1,883 | |
| 20-Sts | 12,068 | 11,087 | 12,396 | 12,168 | 12,662 | 12,065 | |
| | Jul | Aug | Sep | Oct | Nov | Dec | Annual Total ² |
| AZ | 242 | 228 | 231 | 252 | 250 | 268 | 3,073 |
| CA | 2,816 | 2,817 | 2,707 | 2,804 | 2,718 | 2,809 | 33,217 |
| FL | 189 | 171 | 157 | 170 | 178 | 201 | 2,411 |
| ID | 681 | 681 | 653 | 672 | 644 | 660 | 7,757 |
| IL | 162 | 158 | 155 | 158 | 158 | 171 | 2,020 |
| IN | 215 | 207 | 202 | 212 | 212 | 226 | 2,567 |
| IA | 308 | 305 | 295 | 305 | 306 | 319 | 3,785 |
| KY | 135 | 128 | 124 | 130 | 131 | 141 | 1,660 |
| MI | 498 | 489 | 476 | 483 | 474 | 501 | 5,870 |
| MN | 727 | 689 | 677 | 698 | 683 | 730 | 8,812 |
| MO | 154 | 140 | 140 | 153 | 152 | 161 | 1,949 |
| NM | 474 | 474 | 459 | 478 | 466 | 490 | 5,561 |
| NY | 1,016 | 989 | 959 | 983 | 960 | 1,019 | 11,780 |
| OH | 364 | 355 | 344 | 355 | 351 | 374 | 4,295 |
| PA | 906 | 885 | 864 | 894 | 870 | 912 | 10,849 |
| TX | 392 | 369 | 356 | 392 | 398 | 431 | 5,106 |
| VT | 229 | 222 | 216 | 222 | 217 | 229 | 2,669 |
| VA | 154 | 148 | 146 | 153 | 153 | 165 | 1,885 |
| WA | 484 | 480 | 453 | 459 | 440 | 456 | 5,514 |
| WI | 1,874 | 1,814 | 1,776 | 1,793 | 1,747 | 1,837 | 22,199 |
| 20-Sts | 12,020 | 11,749 | 11,390 | 11,766 | 11,508 | 12,100 | 142,979 |

¹ Excludes milk sucked by calves.

² Total milk production for year.

**Milk Production: Total by Month, State,
and 20 States, 2002¹**

| State | Jan | Feb | Mar | Apr | May | Jun | |
|--------|-----------------------|-----------------------|-----------------------|-----------------------|-----------------------|-----------------------|---------------------------|
| | <i>Million Pounds</i> | <i>Million Pounds</i> | <i>Million Pounds</i> | <i>Million Pounds</i> | <i>Million Pounds</i> | <i>Million Pounds</i> | |
| AZ | 292 | 280 | 322 | 316 | 319 | 288 | |
| CA | 2,834 | 2,634 | 2,985 | 2,935 | 3,073 | 2,961 | |
| FL | 214 | 203 | 227 | 220 | 220 | 201 | |
| ID | 665 | 606 | 671 | 665 | 704 | 692 | |
| IL | 178 | 166 | 186 | 185 | 187 | 169 | |
| IN | 225 | 206 | 229 | 225 | 235 | 217 | |
| IA | 321 | 297 | 338 | 331 | 341 | 317 | |
| KY | 144 | 135 | 153 | 153 | 151 | 133 | |
| MI | 490 | 456 | 510 | 496 | 520 | 500 | |
| MN | 750 | 686 | 764 | 740 | 755 | 708 | |
| MO | 169 | 160 | 184 | 183 | 180 | 160 | |
| NM | 505 | 467 | 536 | 535 | 565 | 539 | |
| NY | 1,033 | 944 | 1,056 | 1,034 | 1,091 | 1,043 | |
| OH | 385 | 355 | 392 | 385 | 408 | 376 | |
| PA | 922 | 851 | 947 | 930 | 957 | 893 | |
| TX | 462 | 434 | 496 | 490 | 485 | 439 | |
| VT | 233 | 212 | 236 | 230 | 242 | 231 | |
| VA | 167 | 155 | 174 | 169 | 171 | 156 | |
| WA | 464 | 429 | 477 | 472 | 495 | 477 | |
| WI | 1,874 | 1,725 | 1,927 | 1,881 | 1,940 | 1,848 | |
| 20-Sts | 12,327 | 11,401 | 12,810 | 12,575 | 13,039 | 12,348 | |
| | Jul | Aug | Sep | Oct | Nov | Dec | Annual Total ² |
| AZ | 274 | 268 | 249 | 263 | 270 | 288 | 3,429 |
| CA | 2,981 | 2,988 | 2,819 | 2,929 | 2,812 | 2,933 | 34,884 |
| FL | 186 | 178 | 155 | 163 | 170 | 195 | 2,332 |
| ID | 710 | 723 | 678 | 688 | 659 | 694 | 8,155 |
| IL | 163 | 160 | 157 | 164 | 163 | 173 | 2,051 |
| IN | 212 | 209 | 202 | 211 | 209 | 221 | 2,601 |
| IA | 314 | 311 | 298 | 308 | 306 | 322 | 3,804 |
| KY | 127 | 125 | 119 | 123 | 122 | 129 | 1,614 |
| MI | 501 | 506 | 482 | 495 | 485 | 504 | 5,945 |
| MN | 686 | 684 | 643 | 667 | 662 | 713 | 8,458 |
| MO | 153 | 148 | 143 | 152 | 152 | 162 | 1,946 |
| NM | 548 | 538 | 519 | 534 | 503 | 527 | 6,316 |
| NY | 1,044 | 1,017 | 982 | 1,004 | 956 | 1,013 | 12,217 |
| OH | 366 | 366 | 356 | 369 | 352 | 365 | 4,475 |
| PA | 891 | 886 | 857 | 884 | 863 | 894 | 10,775 |
| TX | 416 | 397 | 389 | 419 | 417 | 456 | 5,300 |
| VT | 228 | 223 | 214 | 218 | 211 | 225 | 2,703 |
| VA | 153 | 149 | 146 | 150 | 147 | 154 | 1,891 |
| WA | 487 | 487 | 458 | 462 | 445 | 467 | 5,620 |
| WI | 1,841 | 1,860 | 1,782 | 1,788 | 1,753 | 1,855 | 22,074 |
| 20-Sts | 12,281 | 12,223 | 11,648 | 11,991 | 11,657 | 12,290 | 146,590 |

¹ Excludes milk sucked by calves.

² Total milk production for year.

**Milk Cows and Production: Number and Milk Produced
by Quarter, State, and United States, 2001**

| State | Milk Cows ¹ | | | | Milk Production ² | | | |
|-----------------|------------------------|-------------------|-------------------|-------------------|------------------------------|-----------------------|-----------------------|-----------------------|
| | Jan-Mar | Apr-Jun | Jul-Sep | Oct-Dec | Jan-Mar | Apr-Jun | Jul-Sep | Oct-Dec |
| | <i>1,000 Head</i> | <i>1,000 Head</i> | <i>1,000 Head</i> | <i>1,000 Head</i> | <i>Million Pounds</i> | <i>Million Pounds</i> | <i>Million Pounds</i> | <i>Million Pounds</i> |
| AL | 22 | 21 | 21 | 21 | 86 | 81 | 63 | 70 |
| AK | 1.1 | 1.1 | 1.1 | 1.2 | 3.41 | 3.62 | 3.61 | 3.72 |
| AZ | 140 | 140 | 140 | 140 | 785 | 817 | 701 | 770 |
| AR | 36 | 35 | 34 | 33 | 117 | 124 | 95 | 96 |
| CA | 1,566 | 1,581 | 1,596 | 1,613 | 8,090 | 8,456 | 8,340 | 8,331 |
| CO | 90 | 91 | 92 | 93 | 483 | 497 | 489 | 501 |
| CT | 26 | 25 | 24 | 24 | 120 | 118 | 108 | 110 |
| DE | 9.0 | 9.0 | 9.0 | 9.0 | 39.0 | 38.0 | 36.0 | 37.0 |
| FL | 155 | 154 | 153 | 152 | 680 | 665 | 517 | 549 |
| GA | 86 | 86 | 86 | 86 | 388 | 386 | 315 | 344 |
| HI | 7.6 | 7.5 | 7.4 | 7.4 | 27.7 | 28.9 | 26.0 | 23.2 |
| ID | 357 | 364 | 370 | 373 | 1,817 | 1,949 | 2,015 | 1,976 |
| IL | 117 | 116 | 115 | 115 | 519 | 539 | 475 | 487 |
| IN | 151 | 153 | 154 | 155 | 635 | 658 | 624 | 650 |
| IA | 214 | 211 | 207 | 206 | 965 | 982 | 908 | 930 |
| KS | 94 | 91 | 91 | 94 | 400 | 410 | 375 | 425 |
| KY | 128 | 129 | 128 | 125 | 425 | 446 | 387 | 402 |
| LA | 55 | 54 | 54 | 54 | 184 | 172 | 131 | 145 |
| ME | 37 | 38 | 38 | 38 | 159 | 167 | 166 | 162 |
| MD | 82 | 82 | 82 | 81 | 327 | 330 | 317 | 320 |
| MA | 21 | 21 | 21 | 21 | 88 | 92 | 89 | 88 |
| MI | 303 | 304 | 303 | 301 | 1,434 | 1,515 | 1,463 | 1,458 |
| MN | 518 | 513 | 507 | 500 | 2,306 | 2,302 | 2,093 | 2,111 |
| MS | 36 | 36 | 35 | 34 | 145 | 137 | 102 | 113 |
| MO | 148 | 148 | 144 | 141 | 507 | 542 | 434 | 466 |
| MT | 19 | 19 | 19 | 19 | 84 | 87 | 88 | 87 |
| NE | 75 | 73 | 70 | 69 | 306 | 302 | 275 | 283 |
| NV | 25 | 25 | 25 | 25 | 119 | 124 | 122 | 120 |
| NH | 18 | 18 | 18 | 18 | 80 | 83 | 79 | 80 |
| NJ | 15 | 14 | 14 | 14 | 60 | 60 | 57 | 56 |
| NM | 261 | 262 | 268 | 280 | 1,302 | 1,418 | 1,407 | 1,434 |
| NY | 670 | 671 | 673 | 674 | 2,851 | 3,003 | 2,964 | 2,962 |
| NC | 68 | 68 | 67 | 66 | 299 | 299 | 271 | 285 |
| ND | 46 | 46 | 46 | 44 | 156 | 168 | 166 | 154 |
| OH | 263 | 261 | 258 | 257 | 1,049 | 1,103 | 1,063 | 1,080 |
| OK | 90 | 90 | 89 | 88 | 326 | 336 | 315 | 316 |
| OR | 90 | 90 | 93 | 105 | 393 | 428 | 433 | 463 |
| PA | 603 | 599 | 598 | 595 | 2,726 | 2,792 | 2,655 | 2,676 |
| RI | 1.4 | 1.4 | 1.4 | 1.4 | 5.9 | 6.1 | 5.7 | 5.5 |
| SC | 22 | 21 | 20 | 20 | 101 | 98 | 80 | 88 |
| SD | 100 | 99 | 99 | 98 | 393 | 401 | 393 | 393 |
| TN | 94 | 93 | 90 | 89 | 355 | 355 | 305 | 320 |
| TX | 338 | 329 | 321 | 312 | 1,388 | 1,380 | 1,117 | 1,221 |
| UT | 93 | 93 | 93 | 93 | 394 | 414 | 419 | 408 |
| VT | 153 | 152 | 152 | 154 | 652 | 682 | 667 | 668 |
| VA | 118 | 118 | 118 | 119 | 482 | 484 | 448 | 471 |
| WA | 247 | 246 | 247 | 247 | 1,335 | 1,407 | 1,417 | 1,355 |
| WV | 16 | 16 | 16 | 16 | 61 | 64 | 63 | 61 |
| WI | 1,311 | 1,293 | 1,284 | 1,280 | 5,603 | 5,755 | 5,464 | 5,377 |
| WY | 4.6 | 4.4 | 4.5 | 4.5 | 15.2 | 15.4 | 16.2 | 16.2 |
| US ³ | 9,141 | 9,112 | 9,096 | 9,106 | 41,266 | 42,720 | 40,563 | 40,948 |

¹ Quarterly average includes dry cows, excludes heifers not yet fresh.

² Excludes milk sucked by calves.

³ May not add due to rounding.

**Milk Cows and Production: Number and Milk Produced
by Quarter, State, and United States, 2002**

| State | Milk Cows ¹ | | | | Milk Production ² | | | |
|-----------------|------------------------|-------------------|-------------------|-------------------|------------------------------|-----------------------|-----------------------|-----------------------|
| | Jan-Mar | Apr-Jun | Jul-Sep | Oct-Dec | Jan-Mar | Apr-Jun | Jul-Sep | Oct-Dec |
| | <i>1,000 Head</i> | <i>1,000 Head</i> | <i>1,000 Head</i> | <i>1,000 Head</i> | <i>Million Pounds</i> | <i>Million Pounds</i> | <i>Million Pounds</i> | <i>Million Pounds</i> |
| AL | 20 | 20 | 20 | 19 | 79 | 76 | 59 | 63 |
| AK | 1.2 | 1.2 | 1.3 | 1.3 | 4.02 | 4.36 | 4.94 | 4.36 |
| AZ | 142 | 145 | 149 | 150 | 894 | 923 | 791 | 821 |
| AR | 33 | 33 | 32 | 31 | 107 | 111 | 88 | 87 |
| CA | 1,627 | 1,640 | 1,652 | 1,670 | 8,453 | 8,969 | 8,788 | 8,674 |
| CO | 97 | 102 | 102 | 99 | 521 | 548 | 550 | 540 |
| CT | 24 | 24 | 24 | 23 | 116 | 117 | 107 | 107 |
| DE | 9.5 | 9.5 | 9.0 | 9.0 | 42.0 | 41.0 | 35.0 | 36.0 |
| FL | 152 | 151 | 149 | 147 | 644 | 641 | 519 | 528 |
| GA | 85 | 85 | 85 | 85 | 395 | 401 | 330 | 344 |
| HI | 6.7 | 6.7 | 6.5 | 6.6 | 24.5 | 25.7 | 23.9 | 22.7 |
| ID | 381 | 387 | 393 | 390 | 1,942 | 2,061 | 2,111 | 2,041 |
| IL | 115 | 115 | 115 | 115 | 530 | 541 | 480 | 500 |
| IN | 154 | 152 | 148 | 147 | 660 | 677 | 623 | 641 |
| IA | 208 | 209 | 210 | 208 | 956 | 989 | 923 | 936 |
| KS | 100 | 104 | 104 | 105 | 480 | 515 | 500 | 515 |
| KY | 123 | 123 | 122 | 120 | 432 | 437 | 371 | 374 |
| LA | 51 | 51 | 50 | 49 | 170 | 160 | 123 | 128 |
| ME | 38 | 38 | 37 | 36 | 164 | 171 | 164 | 157 |
| MD | 81 | 81 | 81 | 80 | 333 | 343 | 324 | 327 |
| MA | 21 | 21 | 20 | 20 | 91 | 94 | 89 | 87 |
| MI | 296 | 298 | 301 | 301 | 1,456 | 1,516 | 1,489 | 1,484 |
| MN | 493 | 490 | 483 | 480 | 2,200 | 2,203 | 2,013 | 2,042 |
| MS | 34 | 34 | 34 | 33 | 139 | 133 | 101 | 105 |
| MO | 139 | 137 | 136 | 135 | 513 | 523 | 444 | 466 |
| MT | 18 | 18 | 18 | 18 | 83 | 86 | 87 | 85 |
| NE | 68 | 67 | 67 | 66 | 299 | 298 | 283 | 290 |
| NV | 25 | 25 | 25 | 25 | 118 | 123 | 123 | 121 |
| NH | 18 | 18 | 17 | 17 | 84 | 85 | 80 | 79 |
| NJ | 13 | 13 | 13 | 13 | 60 | 61 | 58 | 57 |
| NM | 291 | 296 | 304 | 306 | 1,508 | 1,639 | 1,605 | 1,564 |
| NY | 674 | 681 | 677 | 678 | 3,033 | 3,168 | 3,043 | 2,973 |
| NC | 65 | 65 | 64 | 63 | 298 | 302 | 270 | 267 |
| ND | 41 | 40 | 39 | 38 | 148 | 152 | 145 | 140 |
| OH | 260 | 263 | 263 | 261 | 1,132 | 1,169 | 1,088 | 1,086 |
| OK | 88 | 88 | 88 | 88 | 328 | 334 | 316 | 316 |
| OR | 105 | 115 | 117 | 117 | 486 | 538 | 540 | 529 |
| PA | 584 | 581 | 585 | 591 | 2,720 | 2,780 | 2,634 | 2,641 |
| RI | 1.4 | 1.4 | 1.4 | 1.4 | 5.8 | 6.1 | 5.6 | 5.4 |
| SC | 20 | 20 | 20 | 20 | 102 | 99 | 80 | 83 |
| SD | 97 | 97 | 96 | 95 | 363 | 365 | 340 | 336 |
| TN | 90 | 90 | 87 | 84 | 350 | 360 | 300 | 305 |
| TX | 310 | 308 | 308 | 310 | 1,392 | 1,414 | 1,202 | 1,292 |
| UT | 93 | 92 | 93 | 92 | 391 | 423 | 436 | 409 |
| VT | 154 | 154 | 154 | 153 | 681 | 703 | 665 | 654 |
| VA | 120 | 120 | 119 | 119 | 496 | 496 | 448 | 451 |
| WA | 247 | 247 | 248 | 247 | 1,370 | 1,444 | 1,432 | 1,374 |
| WV | 16 | 16 | 15 | 15 | 62 | 64 | 60 | 57 |
| WI | 1,278 | 1,272 | 1,266 | 1,267 | 5,526 | 5,669 | 5,483 | 5,396 |
| WY | 4.5 | 4.6 | 4.4 | 4.1 | 15.8 | 17.0 | 16.3 | 14.3 |
| US ³ | 9,112 | 9,149 | 9,153 | 9,148 | 42,397 | 44,015 | 41,791 | 41,555 |

¹ Quarterly average includes dry cows, excludes heifers not yet fresh.

² Excludes milk sucked by calves.

³ May not add due to rounding.

**Milk Cows: Number of Operations by State
and United States, 2001-2002¹**

| State | Operations with Milk Cows | |
|-------|---------------------------|---------------|
| | 2001 | 2002 |
| | <i>Number</i> | <i>Number</i> |
| AL | 250 | 200 |
| AK | 30 | 30 |
| AZ | 250 | 250 |
| AR | 900 | 800 |
| CA | 2,500 | 2,500 |
| CO | 800 | 780 |
| CT | 310 | 290 |
| DE | 120 | 120 |
| FL | 510 | 500 |
| GA | 720 | 660 |
| HI | 50 | 50 |
| ID | 1,000 | 950 |
| IL | 1,900 | 1,800 |
| IN | 2,900 | 2,600 |
| IA | 3,500 | 3,200 |
| KS | 1,200 | 1,200 |
| KY | 2,900 | 2,500 |
| LA | 610 | 590 |
| ME | 600 | 550 |
| MD | 950 | 900 |
| MA | 350 | 330 |
| MI | 3,300 | 3,200 |
| MN | 7,800 | 7,200 |
| MS | 480 | 450 |
| MO | 3,700 | 3,500 |
| MT | 650 | 600 |
| NE | 1,100 | 1,000 |
| NV | 150 | 150 |
| NH | 260 | 250 |
| NJ | 250 | 250 |
| NM | 500 | 500 |
| NY | 7,200 | 7,100 |
| NC | 900 | 870 |
| ND | 850 | 760 |
| OH | 5,200 | 5,100 |
| OK | 1,700 | 1,600 |
| OR | 820 | 800 |
| PA | 10,300 | 9,900 |
| RI | 30 | 30 |
| SC | 240 | 220 |
| SD | 1,300 | 1,200 |
| TN | 1,500 | 1,400 |
| TX | 2,100 | 1,900 |
| UT | 760 | 700 |
| VT | 1,600 | 1,500 |
| VA | 1,500 | 1,500 |
| WA | 1,000 | 950 |
| WV | 600 | 500 |
| WI | 19,100 | 17,800 |
| WY | 270 | 260 |
| US | 97,510 | 91,990 |

¹ An operation is any place having one or more head of milk cows, excluding cows used to nurse calves, on hand at any time during the year.

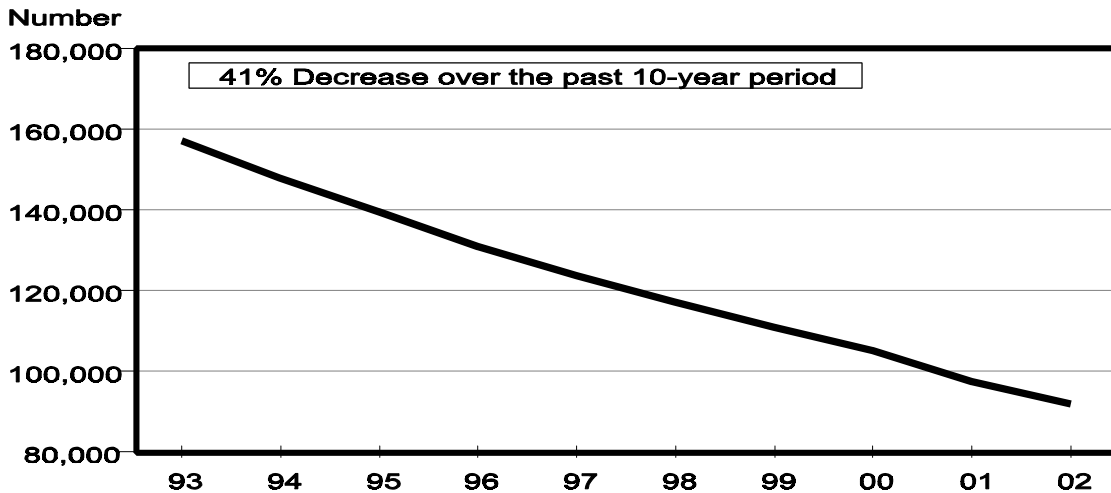
Milk Cows: Number of Operations by Size Group, Selected States, and United States, 2001-2002^{1 2}

| State | Operations Having | | | | | |
|---------|-------------------|---------------|---------------|---------------|---------------|---------------|
| | 1-29 Head | | 30-49 Head | | 50-99 Head | |
| | 2001 | 2002 | 2001 | 2002 | 2001 | 2002 |
| | <i>Number</i> | <i>Number</i> | <i>Number</i> | <i>Number</i> | <i>Number</i> | <i>Number</i> |
| AZ | 120 | 115 | | | 10 | 10 |
| CA | 300 | 280 | 70 | 70 | 80 | 90 |
| CO | 580 | 575 | 10 | 10 | 30 | 30 |
| FL | 290 | 290 | 5 | 5 | 20 | 20 |
| GA | 320 | 290 | 20 | 10 | 90 | 90 |
| ID | 230 | 210 | 80 | 80 | 210 | 190 |
| IL | 480 | 480 | 360 | 350 | 700 | 620 |
| IN | 1,500 | 1,200 | 470 | 490 | 570 | 580 |
| IA | 820 | 715 | 890 | 800 | 1,200 | 1,050 |
| KY | 1,300 | 1,000 | 520 | 470 | 760 | 700 |
| MD | 160 | 160 | 150 | 150 | 370 | 310 |
| MI | 1,050 | 1,050 | 550 | 500 | 800 | 750 |
| MN | 1,100 | 900 | 2,700 | 2,400 | 3,000 | 2,900 |
| MO | 1,600 | 1,600 | 700 | 600 | 850 | 800 |
| NM | 335 | 325 | | | 5 | 5 |
| NY | 1,300 | 1,200 | 1,200 | 1,250 | 2,800 | 2,800 |
| NC | 460 | 460 | 40 | 30 | 150 | 140 |
| OH | 2,400 | 2,300 | 850 | 900 | 1,250 | 1,200 |
| OK | 1,050 | 1,000 | 120 | 120 | 260 | 230 |
| OR | 400 | 370 | 30 | 30 | 80 | 85 |
| PA | 1,800 | 1,600 | 3,700 | 3,500 | 3,600 | 3,600 |
| SD | 410 | 370 | 280 | 250 | 370 | 345 |
| TN | 630 | 550 | 140 | 130 | 390 | 390 |
| TX | 950 | 900 | 100 | 90 | 250 | 200 |
| UT | 270 | 240 | 35 | 40 | 140 | 110 |
| VT | 130 | 110 | 270 | 270 | 780 | 710 |
| VA | 490 | 500 | 140 | 150 | 420 | 400 |
| WA | 300 | 290 | 40 | 30 | 110 | 110 |
| WI | 3,150 | 2,600 | 5,300 | 4,800 | 7,800 | 7,500 |
| Oth Sts | 4,200 | 4,000 | 1,100 | 1,000 | 2,100 | 1,900 |
| US | 28,125 | 25,680 | 19,870 | 18,525 | 29,195 | 27,865 |

See footnote(s) at end of table.

--continued

**Milk Cow Operations, 1993-2002
United States**



Milk Cows: Number of Operations by Size Group, Selected States, and United States, 2001-2002^{1 2} (continued)

| State | Operations Having | | | | | |
|---------|-------------------|---------------|---------------|---------------|---------------|---------------|
| | 100-199 Head | | 200-499 Head | | 500+ Head | |
| | 2001 | 2002 | 2001 | 2002 | 2001 | 2002 |
| | <i>Number</i> | <i>Number</i> | <i>Number</i> | <i>Number</i> | <i>Number</i> | <i>Number</i> |
| AZ | 10 | 10 | 20 | 20 | 90 | 95 |
| CA | 250 | 260 | 700 | 700 | 1,100 | 1,100 |
| CO | 55 | 40 | 75 | 75 | 50 | 50 |
| FL | 35 | 30 | 60 | 55 | 100 | 100 |
| GA | 170 | 160 | 90 | 80 | 30 | 30 |
| ID | 150 | 140 | 150 | 150 | 180 | 180 |
| IL | 280 | 270 | 70 | 65 | 10 | 15 |
| IN | 280 | 250 | 55 | 55 | 25 | 25 |
| IA | 480 | 510 | 95 | 100 | 15 | 25 |
| KY | 270 | 270 | 45 | 55 | 5 | 5 |
| MD | 210 | 210 | 50 | 60 | 10 | 10 |
| MI | 620 | 590 | 215 | 240 | 65 | 70 |
| MN | 700 | 700 | 250 | 250 | 50 | 50 |
| MO | 500 | 450 | 45 | 40 | 5 | 10 |
| NM | 5 | 5 | 15 | 15 | 140 | 150 |
| NY | 1,300 | 1,200 | 470 | 510 | 130 | 140 |
| NC | 160 | 155 | 75 | 70 | 15 | 15 |
| OH | 560 | 540 | 120 | 140 | 20 | 20 |
| OK | 210 | 190 | 50 | 50 | 10 | 10 |
| OR | 170 | 170 | 100 | 100 | 40 | 45 |
| PA | 900 | 900 | 270 | 260 | 30 | 40 |
| SD | 180 | 170 | 45 | 45 | 15 | 20 |
| TN | 250 | 250 | 80 | 70 | 10 | 10 |
| TX | 320 | 290 | 320 | 260 | 160 | 160 |
| UT | 170 | 160 | 110 | 110 | 35 | 40 |
| VT | 270 | 260 | 120 | 120 | 30 | 30 |
| VA | 340 | 350 | 100 | 90 | 10 | 10 |
| WA | 190 | 180 | 220 | 200 | 140 | 140 |
| WI | 2,000 | 2,000 | 680 | 700 | 170 | 200 |
| Oth Sts | 1,300 | 1,150 | 500 | 470 | 100 | 110 |
| US | 12,335 | 11,860 | 5,195 | 5,155 | 2,790 | 2,905 |

¹ An operation is any place having one or more head of milk cows, excluding cows used to nurse calves, on hand at any time during the year.

² Missing data combined with other size groups.

Milk Cows: Percent of Inventory by Size Group, Selected States, and United States, 2001-2002^{1,2}

| State | Inventory on Operations Having | | | | | |
|---------|--------------------------------|----------------|----------------|----------------|----------------|----------------|
| | 1-29 Head | | 30-49 Head | | 50-99 Head | |
| | 2001 | 2002 | 2001 | 2002 | 2001 | 2002 |
| | <i>Percent</i> | <i>Percent</i> | <i>Percent</i> | <i>Percent</i> | <i>Percent</i> | <i>Percent</i> |
| AZ | 0.3 | 0.3 | | | 0.4 | 0.4 |
| CA | 0.1 | 0.1 | 0.2 | 0.2 | 0.3 | 0.4 |
| CO | 1.1 | 1.3 | 0.4 | 0.4 | 2.0 | 2.0 |
| FL | 0.4 | 0.4 | 0.1 | 0.1 | 1.0 | 1.0 |
| GA | 1.0 | 1.0 | 1.0 | 0.5 | 8.0 | 7.5 |
| ID | 0.4 | 0.4 | 0.9 | 0.8 | 4.1 | 3.7 |
| IL | 3.0 | 3.0 | 10.0 | 10.0 | 38.0 | 34.0 |
| IN | 9.0 | 7.0 | 12.0 | 11.0 | 25.0 | 25.0 |
| IA | 5.0 | 3.5 | 13.0 | 12.0 | 36.0 | 32.0 |
| KY | 8.0 | 6.0 | 15.0 | 14.5 | 39.0 | 39.0 |
| MD | 1.5 | 2.0 | 6.5 | 7.0 | 29.0 | 24.0 |
| MI | 5.0 | 4.0 | 7.0 | 6.0 | 18.0 | 17.0 |
| MN | 4.0 | 3.6 | 20.0 | 19.0 | 38.0 | 39.0 |
| MO | 5.0 | 4.5 | 17.0 | 16.0 | 31.0 | 31.0 |
| NM | 0.2 | 0.2 | | | 0.1 | 0.1 |
| NY | 2.0 | 2.0 | 8.0 | 7.5 | 29.0 | 28.0 |
| NC | 1.9 | 2.2 | 2.1 | 1.8 | 17.0 | 16.0 |
| OH | 9.0 | 9.0 | 13.0 | 13.0 | 31.0 | 31.0 |
| OK | 4.0 | 3.0 | 5.0 | 5.0 | 19.0 | 18.0 |
| OR | 0.7 | 0.9 | 1.3 | 1.1 | 7.0 | 6.0 |
| PA | 4.0 | 3.0 | 24.0 | 23.0 | 37.0 | 38.0 |
| SD | 4.0 | 4.0 | 11.0 | 10.0 | 26.0 | 25.0 |
| TN | 2.5 | 2.5 | 5.0 | 5.0 | 29.0 | 29.0 |
| TX | 1.0 | 1.0 | 1.0 | 1.0 | 5.0 | 4.5 |
| UT | 1.0 | 1.0 | 1.0 | 1.5 | 11.0 | 8.5 |
| VT | 1.0 | 1.0 | 7.0 | 7.0 | 31.0 | 29.0 |
| VA | 3.0 | 3.5 | 4.0 | 4.5 | 26.0 | 25.0 |
| WA | 0.3 | 0.2 | 0.7 | 0.5 | 3.0 | 3.3 |
| WI | 3.7 | 3.5 | 14.0 | 13.0 | 38.0 | 38.0 |
| Oth Sts | 3.0 | 3.0 | 6.0 | 6.0 | 24.0 | 23.0 |
| US | 2.6 | 2.3 | 8.1 | 7.5 | 20.9 | 20.1 |

See footnote(s) at end of table.

--continued

Milk Cows: Percent of Inventory by Size Group, Selected States, and United States, 2001-2002^{1 2}(continued)

| State | Inventory on Operations Having | | | | | |
|---------|--------------------------------|----------------|----------------|----------------|----------------|----------------|
| | 100-199 Head | | 200-499 Head | | 500+ Head | |
| | 2001 | 2002 | 2001 | 2002 | 2001 | 2002 |
| | <i>Percent</i> | <i>Percent</i> | <i>Percent</i> | <i>Percent</i> | <i>Percent</i> | <i>Percent</i> |
| AZ | 0.8 | 0.8 | 4.5 | 3.5 | 94.0 | 95.0 |
| CA | 2.4 | 2.3 | 15.0 | 14.0 | 82.0 | 83.0 |
| CO | 7.5 | 5.0 | 26.7 | 25.8 | 62.3 | 65.5 |
| FL | 3.0 | 3.0 | 12.5 | 12.5 | 83.0 | 83.0 |
| GA | 28.0 | 26.0 | 27.0 | 26.0 | 35.0 | 39.0 |
| ID | 5.6 | 5.1 | 13.0 | 12.0 | 76.0 | 78.0 |
| IL | 28.0 | 30.0 | 16.0 | 15.5 | 5.0 | 7.5 |
| IN | 24.0 | 22.0 | 10.0 | 10.0 | 20.0 | 25.0 |
| IA | 28.0 | 30.0 | 12.0 | 13.0 | 6.0 | 9.5 |
| KY | 27.0 | 27.0 | 8.5 | 11.0 | 2.5 | 2.5 |
| MD | 34.0 | 35.0 | 16.0 | 19.0 | 13.0 | 13.0 |
| MI | 27.0 | 26.0 | 21.0 | 23.0 | 22.0 | 24.0 |
| MN | 16.0 | 16.0 | 14.0 | 14.0 | 8.0 | 8.4 |
| MO | 36.0 | 35.0 | 7.5 | 7.0 | 3.5 | 6.5 |
| NM | 0.3 | 0.3 | 1.4 | 1.4 | 98.0 | 98.0 |
| NY | 27.0 | 24.5 | 18.0 | 20.0 | 16.0 | 18.0 |
| NC | 32.0 | 33.0 | 30.0 | 29.0 | 17.0 | 18.0 |
| OH | 28.0 | 26.0 | 13.0 | 15.0 | 6.0 | 6.0 |
| OK | 29.0 | 27.0 | 15.0 | 17.0 | 28.0 | 30.0 |
| OR | 21.0 | 19.0 | 32.0 | 28.0 | 38.0 | 45.0 |
| PA | 20.0 | 20.0 | 11.0 | 11.0 | 4.0 | 5.0 |
| SD | 25.0 | 24.0 | 14.0 | 14.0 | 20.0 | 23.0 |
| TN | 35.0 | 36.0 | 22.0 | 21.0 | 6.5 | 6.5 |
| TX | 14.0 | 13.5 | 31.0 | 27.0 | 48.0 | 53.0 |
| UT | 24.0 | 23.0 | 33.0 | 31.0 | 30.0 | 35.0 |
| VT | 23.0 | 22.0 | 22.0 | 23.0 | 16.0 | 18.0 |
| VA | 38.0 | 40.0 | 23.0 | 21.0 | 6.0 | 6.0 |
| WA | 11.0 | 11.0 | 28.0 | 26.0 | 57.0 | 59.0 |
| WI | 19.0 | 19.0 | 15.0 | 14.5 | 10.3 | 12.0 |
| Oth Sts | 27.0 | 26.0 | 22.0 | 22.0 | 18.0 | 20.0 |
| US | 17.4 | 16.7 | 16.4 | 16.1 | 34.6 | 37.3 |

¹ Percents reflect average distributions of various probability surveys conducted during the year but are based primarily on beginning-of-year and mid-year surveys.

² Missing data combined with other size groups.

Milk Production: Percent of Production by Size Group, Selected States, and United States, 2001-2002^{1 2}

| State | 1-29 Head | | 30-49 Head | | 50-99 Head | |
|---------|----------------|----------------|----------------|----------------|----------------|----------------|
| | 2001 | 2002 | 2001 | 2002 | 2001 | 2002 |
| | <i>Percent</i> | <i>Percent</i> | <i>Percent</i> | <i>Percent</i> | <i>Percent</i> | <i>Percent</i> |
| AZ | 0.1 | 0.1 | | | 0.2 | 0.2 |
| CA | 0.1 | 0.1 | 0.1 | 0.1 | 0.2 | 0.3 |
| CO | 1.0 | 1.0 | 0.5 | 0.5 | 1.5 | 2.0 |
| FL | 0.2 | 0.2 | 0.1 | 0.1 | 0.6 | 0.5 |
| GA | 0.5 | 0.5 | 0.5 | 0.5 | 6.0 | 6.0 |
| ID | 0.2 | 0.2 | 0.6 | 0.6 | 3.1 | 2.7 |
| IL | 2.5 | 2.5 | 8.0 | 9.0 | 38.0 | 32.0 |
| IN | 7.0 | 6.0 | 10.0 | 9.0 | 24.0 | 23.0 |
| IA | 4.0 | 3.0 | 11.0 | 10.0 | 35.0 | 31.0 |
| KY | 5.0 | 5.0 | 14.0 | 13.0 | 39.0 | 38.0 |
| MD | 1.0 | 1.0 | 5.0 | 6.0 | 28.0 | 23.0 |
| MI | 3.0 | 2.5 | 5.5 | 4.5 | 15.5 | 15.0 |
| MN | 3.0 | 2.7 | 18.0 | 17.0 | 37.0 | 38.0 |
| MO | 3.0 | 2.0 | 15.0 | 15.0 | 30.0 | 30.0 |
| NM | 0.1 | 0.1 | | | 0.1 | 0.1 |
| NY | 1.5 | 1.5 | 6.5 | 5.5 | 26.0 | 25.0 |
| NC | 0.4 | 0.5 | 1.6 | 1.5 | 17.0 | 15.0 |
| OH | 5.0 | 5.5 | 12.0 | 11.5 | 30.0 | 30.0 |
| OK | 2.0 | 2.0 | 4.0 | 4.0 | 17.0 | 15.0 |
| OR | 0.5 | 0.5 | 1.5 | 1.0 | 6.0 | 5.5 |
| PA | 3.0 | 2.0 | 22.0 | 21.0 | 37.0 | 38.0 |
| SD | 3.0 | 3.0 | 9.0 | 9.0 | 22.0 | 23.0 |
| TN | 2.0 | 1.5 | 4.5 | 4.0 | 28.0 | 28.0 |
| TX | 0.3 | 0.3 | 0.7 | 0.7 | 4.0 | 4.0 |
| UT | 0.7 | 0.7 | 0.8 | 1.3 | 9.5 | 7.0 |
| VT | 0.5 | 0.5 | 5.5 | 5.5 | 28.0 | 27.0 |
| VA | 2.0 | 2.0 | 3.0 | 4.0 | 24.0 | 23.0 |
| WA | 0.1 | 0.2 | 0.4 | 0.3 | 2.5 | 2.5 |
| WI | 2.7 | 2.5 | 13.3 | 12.0 | 36.0 | 35.0 |
| Oth Sts | 1.5 | 1.5 | 5.0 | 5.0 | 22.0 | 21.0 |
| US | 1.6 | 1.5 | 6.7 | 6.1 | 18.3 | 17.4 |

See footnote(s) at end of table.

--continued

Milk Production: Percent of Production by Size Group, Selected States, and United States, 2001-2002^{1,2}(continued)

| State | 100-199 Head | | 200-499 Head | | 500+ Head | |
|---------|----------------|----------------|----------------|----------------|----------------|----------------|
| | 2001 | 2002 | 2001 | 2002 | 2001 | 2002 |
| | <i>Percent</i> | <i>Percent</i> | <i>Percent</i> | <i>Percent</i> | <i>Percent</i> | <i>Percent</i> |
| AZ | 0.5 | 0.5 | 3.7 | 3.2 | 95.5 | 96.0 |
| CA | 2.6 | 2.5 | 19.0 | 17.0 | 78.0 | 80.0 |
| CO | 6.5 | 4.5 | 26.5 | 25.0 | 64.0 | 67.0 |
| FL | 2.6 | 1.7 | 11.5 | 12.5 | 85.0 | 85.0 |
| GA | 27.0 | 27.0 | 27.0 | 26.0 | 39.0 | 40.0 |
| ID | 4.6 | 4.0 | 11.5 | 11.0 | 80.0 | 81.5 |
| IL | 28.0 | 30.5 | 17.0 | 17.0 | 6.5 | 9.0 |
| IN | 25.0 | 21.0 | 11.0 | 11.0 | 23.0 | 30.0 |
| IA | 29.0 | 31.0 | 14.0 | 14.0 | 7.0 | 11.0 |
| KY | 30.0 | 29.0 | 10.0 | 12.0 | 2.0 | 3.0 |
| MD | 35.0 | 35.0 | 17.0 | 20.0 | 14.0 | 15.0 |
| MI | 27.0 | 25.0 | 23.0 | 25.0 | 26.0 | 28.0 |
| MN | 17.0 | 17.0 | 16.0 | 16.0 | 9.0 | 9.3 |
| MO | 38.0 | 38.0 | 9.0 | 7.0 | 5.0 | 8.0 |
| NM | 0.4 | 0.4 | 1.4 | 1.4 | 98.0 | 98.0 |
| NY | 27.0 | 25.0 | 20.0 | 22.0 | 19.0 | 21.0 |
| NC | 33.0 | 32.0 | 30.0 | 30.0 | 18.0 | 21.0 |
| OH | 30.0 | 28.0 | 15.0 | 17.0 | 8.0 | 8.0 |
| OK | 27.0 | 25.0 | 15.0 | 17.0 | 35.0 | 37.0 |
| OR | 18.0 | 18.0 | 33.0 | 28.0 | 41.0 | 47.0 |
| PA | 21.0 | 21.0 | 12.0 | 12.0 | 5.0 | 6.0 |
| SD | 25.0 | 24.0 | 17.0 | 16.0 | 24.0 | 25.0 |
| TN | 35.0 | 37.0 | 23.0 | 22.0 | 7.5 | 7.5 |
| TX | 14.0 | 12.0 | 29.0 | 25.0 | 52.0 | 58.0 |
| UT | 23.0 | 21.0 | 34.0 | 32.0 | 32.0 | 38.0 |
| VT | 23.0 | 22.0 | 23.0 | 25.0 | 20.0 | 20.0 |
| VA | 39.0 | 41.0 | 25.0 | 23.0 | 7.0 | 7.0 |
| WA | 10.0 | 9.0 | 28.0 | 26.0 | 59.0 | 62.0 |
| WI | 19.0 | 19.0 | 17.0 | 17.5 | 12.0 | 14.0 |
| Oth Sts | 27.0 | 25.0 | 23.5 | 23.5 | 21.0 | 24.0 |
| US | 16.5 | 15.6 | 17.9 | 17.5 | 39.0 | 41.9 |

¹ Percents reflect average distributions of various probability surveys conducted during the year but are based primarily on beginning-of-year and mid-year surveys.

² Missing data combined with other size groups.

Milk Cows: Number of Operations, Percent of Inventory, and Percent of Milk Production by Size Group, United States, 2001-2002¹

| Head | Operations | | Percent of Inventory | | Percent of Production | |
|-------------|---------------|---------------|----------------------|----------------|-----------------------|----------------|
| | 2001 | 2002 | 2001 | 2002 | 2001 | 2002 |
| | <i>Number</i> | <i>Number</i> | <i>Percent</i> | <i>Percent</i> | <i>Percent</i> | <i>Percent</i> |
| 1-29 | 28,125 | 25,680 | 2.6 | 2.3 | 1.6 | 1.5 |
| 30-49 | 19,870 | 18,525 | 8.1 | 7.5 | 6.7 | 6.1 |
| 50-99 | 29,195 | 27,865 | 20.9 | 20.1 | 18.3 | 17.4 |
| 100-199 | 12,335 | 11,860 | 17.4 | 16.7 | 16.5 | 15.6 |
| 200-499 | 5,195 | 5,155 | 16.4 | 16.1 | 17.9 | 17.5 |
| 500-999 | 1,700 | 1,750 | 12.0 | 12.5 | 13.5 | 13.9 |
| 1,000-1,999 | 770 | 775 | 11.5 | 11.5 | 13.2 | 13.0 |
| 2,000+ | 320 | 380 | 11.1 | 13.3 | 12.3 | 15.0 |
| Total | 97,510 | 91,990 | 100.0 | 100.0 | 100.0 | 100.0 |

¹ An operation is any place having one or more head of milk cows, excluding cows used to nurse calves, on hand at any time during the year. Percents reflect average distributions of various probability surveys conducted during the year but are based primarily on beginning-of-year and mid-year surveys.

Reliability Statement

Survey Procedures: Primary data used to determine these estimates were obtained from a sample of producers. Individual States maintain a list of all known milk producers and information on the size of their herd. States use all known sources of producers to ensure that their lists are as complete as possible. Generally, all large producers and a sample of small producers are included in the survey. Questionnaires are mailed to producers near the end of the month to obtain data for the first day of the month. Additional reports are obtained by telephone, as needed, to supplement the mail response. Where feasible, States utilize state and federal administrative data, rather than conduct a monthly or quarterly survey, to estimate milk production. This eliminates duplication of data gathering by different government agencies. Indications of milk cow inventory are also obtained in the January and July Cattle Surveys.

Estimation Procedures: State offices prepare these estimates by using a combination of survey indications, historic trends, and any available administrative data. Individual State estimates are reviewed by the Agricultural Statistics Board for reasonableness.

Revision Policy: Milk production, rate per cow, and number of cows are subject to revision the following month for monthly States or the following quarter for the quarterly States. Normally, Federal Market Order sales are the main basis for revisions. However, data for all orders are not available in time for this revision. Estimates are again subject to revisions in February each year based on additional administrative data. In the event that additional changes are necessary, a third revision is possible in February the following year. Estimates are again reviewed after data from the five-year Census of Agriculture are available. No revisions are made after that date.

Reliability: Since all operations with dairy animals are not included in the sample, survey estimates are subject to sampling variability. Survey results are also subject to non-sampling errors such as omissions, duplications, and mistakes in reporting, recording, and processing the data. The effects of these errors cannot be measured directly. They are minimized through rigid quality controls in the data collection process and through a careful review of all reported data for consistency and reasonableness.

To assist users in evaluating the reliability of the estimates in this report, the "Root Mean Square Error" is shown for selected items on the next page. The "Root Mean Square Error" is a statistical measure based on past performance and is computed using the differences between first and final estimates. The "Root Mean Square Error" for milk cow inventory estimates over the past 10 October-December quarters is 0.9 percent. This means that chances are 2 out of 3 that the final October-December estimate will not be above or below the current estimate of 9.15 million head by more than 0.9 percent. Chances are 9 out of 10 that the difference will not exceed 1.6 percent.

Reliability of October-December Milk Estimates ¹

| Item | Root Mean Square Error | 90% Confidence Level | | Difference Between First and Latest Estimates | | | Quarters | |
|-----------------|------------------------|-----------------------|------------------------------|---|----------------------------|------------------------------|--------------------|--------------------|
| | | | | Average | Smallest | Largest | First Above Latest | First Below Latest |
| | | | | <i>Million Pounds</i> | <i>Million Pounds</i> | <i>Million Pounds</i> | <i>Number</i> | <i>Number</i> |
| Milk Production | <i>Percent</i> 0.5 | <i>Percent</i> 0.9 | <i>Million Pounds</i> 374 | <i>Million Pounds</i> 163 | <i>Million Pounds</i> 1 | <i>Million Pounds</i> 385 | <i>Number</i> 8 | <i>Number</i> 2 |
| All Milk Cows | <i>Percent</i> 0.9 | <i>Percent</i> 1.6 | <i>1,000 Head</i> 146 | <i>1,000 Head</i> 60 | <i>1,000 Head</i> 2 | <i>1,000 Head</i> 164 | <i>Number</i> 8 | <i>Number</i> 2 |

¹ Based on records for the past 10 October-December quarters.

Index

Page

| | |
|---|----|
| Estimated Milk Cows and Production: by Month, United States | 2 |
| Milk Cows and Production: by Month, 20 Selected States | 2 |
| Milk Cows and Production: by Quarter, United States | 2 |
| Milk Cows and Production: by State, January | 3 |
| Milk Cows and Production: by State, December | 4 |
| Milk Cows and Production: by State, and United States | 6 |
| Milk Cows and Production: United States, 1993-2002 | 5 |
| Milk Cows: Number by Month, State, and 20 States, 2001 | 8 |
| Milk Cows: Number by Month, State, and 20 States, 2002 | 9 |
| Milk Produced per Cow: by Month, State, and 20 States, 2001 | 10 |
| Milk Produced per Cow: by Month, State, and 20 States, 2002 | 11 |
| Milk Production: Total by Month, State, and 20 States, 2001 | 12 |
| Milk Production: Total by Month, State, and 20 States, 2002 | 13 |
| Milk Cows and Production: Number and Milk Produced by Quarter, State, and United States, 2001 | 14 |
| Milk Cows and Production: Number and Milk Produced by Quarter, State, and United States, 2002 | 15 |
| Milk Cows: Number of Operations, by State, and United States | 16 |
| Milk Cows: Number of Operations by Size Group, Selected States and United States | 17 |
| Milk Cows: Number of Operations, Percent of Inventory, and Percent of Milk Production by Size Group, United States | 22 |
| Milk Cows: Percent of Inventory by Size Group, Selected States and United States | 19 |
| Milk Production: Percent of Production by Size, Selected States and United States | 21 |
| Reliability Statement: Survey and Estimation Procedures, Revision Policy, and Reliability | 23 |

The next "Milk Production" report will be released at 3 p.m. ET on March 17, 2003.

The United States Department of Agriculture (USDA) prohibits discrimination in all its programs on the basis of race, color, national origin, gender, religion, age, disability, political beliefs, sexual orientation, and marital or family status. (Not all prohibited bases apply to all programs.) Persons with disabilities who require alternative means for communication of program information (braille, large print, audiotape, etc.) should contact the USDA's TARGET Center at 202-720-2600 (voice and TDD).

To file a complaint of discrimination, write USDA, Director, Office of Civil Rights, Room 326-W, Whitten Building, 1400 Independence Avenue, SW, Washington, D.C., 20250-9410, or call 202-720-5964 (voice or TDD). USDA is an equal opportunity provider and employer.

ACCESS TO REPORTS!!

For your convenience, there are several ways to obtain NASS reports, data products, and services:

INTERNET ACCESS

All NASS reports are available free of charge on the worldwide Internet. For access, connect to the Internet and go to the NASS Home Page at: <http://www.usda.gov/nass/>. Select "Today's Reports" or Publications and then Reports Calendar or Publications and then Search, by Title or Subject.

E-MAIL SUBSCRIPTION

All NASS reports are available by subscription free of charge direct to your e-mail address. Starting with the NASS Home Page at <http://www.usda.gov/nass/>, click on **Publications**, then click on the **Subscribe by E-mail** button which takes you to the page describing e-mail delivery of reports. Finally, click on **Go to the Subscription Page** and follow the instructions.

AUTOFAX ACCESS

NASSFax service is available for some reports from your fax machine. Please call 202-720-2000, using the handset attached to your fax. Respond to the voice prompts. Document 0411 is a list of available reports.

PRINTED REPORTS OR DATA PRODUCTS

CALL OUR TOLL-FREE ORDER DESK: 800-999-6779 (U.S. and Canada)
Other areas, please call 703-605-6220 FAX: 703-605-6900
(Visa, MasterCard, check, or money order acceptable for payment.)

ASSISTANCE

For **assistance** with general agricultural statistics or further information about NASS or its products or services, contact the **Agricultural Statistics Hotline** at **800-727-9540**, 7:30 a.m. to 4:00 p.m. ET, or e-mail: nass@nass.usda.gov.

Competing in the 21st Century

Agricultural Outlook Forum 2003



February 20-21, 2003

Crystal Gateway

Marriott Hotel

Arlington, Virginia

- ◆ **2003 Commodity Prospects**
- ◆ **Emerging Export Competitors**
- ◆ **Farming under New Programs**
- ◆ **Coping with Regulations**
- ◆ **Shifting consumer Preferences**
- ◆ **Ensuring Food Safety**
- ◆ **Impact of El Nino**

Sharpen your strategic focus at USDA's 79th annual Agricultural Outlook Forum. Note experts, industry leaders and producers will discuss many facets of competing in domestic and world markets.

The program will examine growing competition from Central and Eastern Europe, Brazil and Asia, as well as progress in WTO negotiations.

Focus sessions will highlight many challenges producers face in the competitive arena, ranging from the growing complexity and cost of regulation, to dealing with food safety and changing eating habits.

As always, leading analysts will be on hand to debate planting, trade and price prospects for farm commodities for the year ahead. Attendees will receive new 10-year commodity projections from USDA.

Networking opportunities abound at the Forum, which attracted 1,400 attendees last February. Register now for the best value. See full details at www.usda.gov/oce.

www.usda.gov/oce agforum@oce.usda.gov (877) 891-2208 toll free