

Milk Production

Released June 17, 2003, by the National Agricultural Statistics Service (NASS), Agricultural Statistics Board, U.S. Department of Agriculture. For information on "Milk Production" call Ty Kalas at 202-690-3236, office hours 7:30 a.m. to 4:00 p.m. ET.

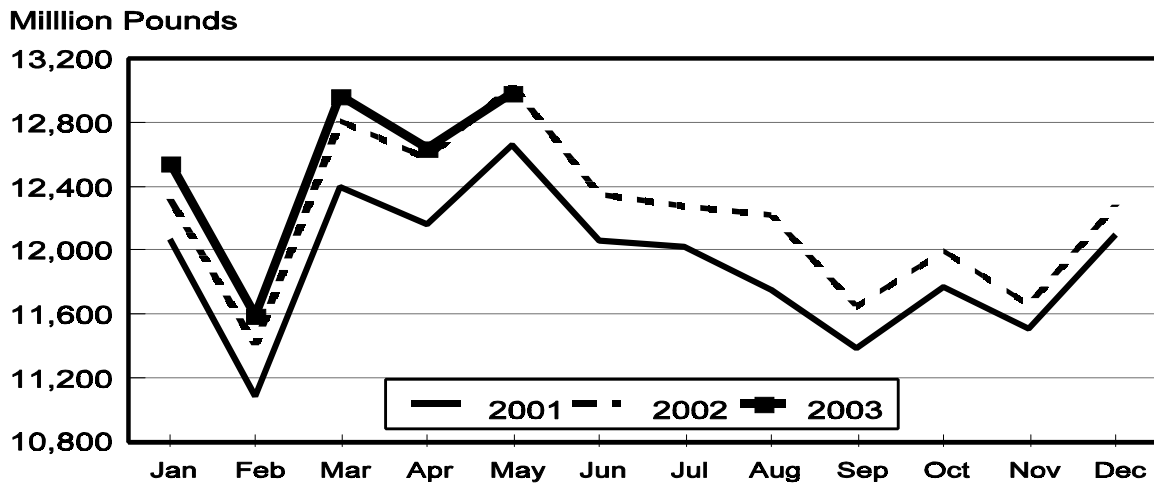
May Milk Production Down 0.4 Percent

Milk production in the 20 major States during May totaled 13.0 billion pounds, down 0.4 percent from May 2002. April revised production, at 12.6 billion pounds, was up 0.6 percent from April 2002. The April revision represented a decrease of 0.2 percent or 30 million pounds from last month's preliminary production estimate.

Production per cow in the 20 major States averaged 1,669 pounds for May, 9 pounds below May 2002.

The number of milk cows on farms in the 20 major States was 7.79 million head, 17,000 head more than May 2002, but 12,000 head less than April 2003.

Monthly Milk Production 20 States



Milk Cows and Production: By Quarter, United States, 2002-2003¹

Quarter	Milk Cows ²		Milk Per Cow ³		Milk Production ³		
	2002	2003	2002	2003	2002	2003	Change From 2002
	<i>1,000 Head</i>	<i>1,000 Head</i>	<i>Pounds</i>	<i>Pounds</i>	<i>Million Pounds</i>	<i>Million Pounds</i>	<i>Percent</i>
Jan-Mar	9,112	9,154	4,653	4,690	42,397	42,931	1.3
Apr-Jun	9,149		4,811		44,015		
Jul-Sep	9,153		4,566		41,791		
Oct-Dec	9,148		4,543		41,555		
Annual	9,141		18,571		169,758		

¹ May not add due to rounding.

² Includes dry cows, excludes heifers not yet fresh.

³ Excludes milk sucked by calves.

Milk Cows and Production: By Month, 20 Selected States, 2002-2003¹

Month	Milk Cows ²		Milk Per Cow ³		Milk Production ³		
	2002	2003	2002	2003	2002	2003	Change From 2002
	<i>1,000 Head</i>	<i>1,000 Head</i>	<i>Pounds</i>	<i>Pounds</i>	<i>Million Pounds</i>	<i>Million Pounds</i>	<i>Percent</i>
Jan	7,749	7,807	1,591	1,607	12,327	12,548	1.8
Feb	7,744	7,810	1,472	1,484	11,401	11,588	1.6
Mar	7,745	7,811	1,654	1,660	12,810	12,969	1.2
Apr	7,758	7,798	1,621	1,622	12,575	12,645	0.6
May	7,769	7,786	1,678	1,669	13,039	12,992	-0.4
Jun	7,782		1,587		12,348		
Jul	7,781		1,578		12,281		
Aug	7,785		1,570		12,223		
Sep	7,781		1,497		11,648		
Oct	7,789		1,539		11,991		
Nov	7,792		1,496		11,657		
Dec	7,801		1,575		12,290		
Annual	7,773		18,858		146,590		

¹ 2003 revised.

² Includes dry cows, excludes heifers not yet fresh.

³ Excludes milk sucked by calves.

Estimated Milk Cows and Production: By Month, United States, 2002-2003¹

Month	Milk Cows ²		Milk Per Cow ³		Milk Production ³		
	2002	2003	2002	2003	2002	2003	Change From 2002
	<i>1,000 Head</i>	<i>1,000 Head</i>	<i>Pounds</i>	<i>Pounds</i>	<i>Million Pounds</i>	<i>Million Pounds</i>	<i>Percent</i>
Jan	9,117	9,153	1,569	1,586	14,304	14,517	1.5
Feb	9,109	9,155	1,452	1,464	13,229	13,406	1.3
Mar	9,110	9,155	1,632	1,639	14,864	15,008	1.0
Apr	9,132	9,138	1,597	1,604	14,580	14,660	0.5
May	9,149	9,123	1,652	1,650	15,118	15,048	-0.5
Jun	9,166		1,562		14,317		
Jul	9,158		1,550		14,196		
Aug	9,157		1,543		14,128		
Sep	9,145		1,473		13,467		
Oct	9,147		1,516		13,866		
Nov	9,146		1,474		13,478		
Dec	9,150		1,553		14,211		
Annual	9,141		18,571		169,758		

¹ 2003 revised.

² Includes dry cows, excludes heifers not yet fresh.

³ Excludes milk sucked by calves.

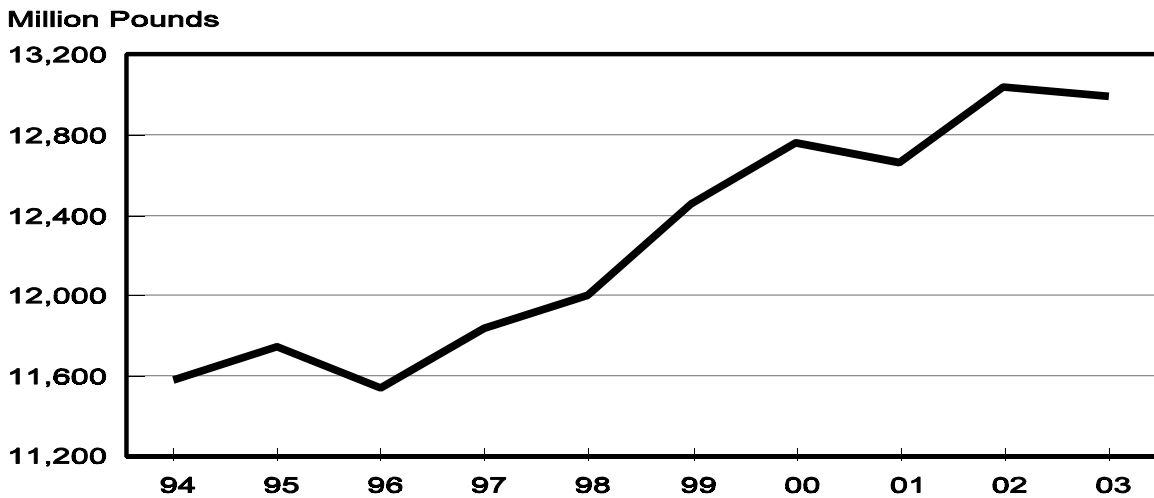
Milk Cows and Production: By State, May 2002-2003

State	Milk Cows ¹		Milk Per Cow ²		Milk Production ²		
	2002	2003	2002	2003	2002	2003	Change From 2002
	<i>1,000 Head</i>	<i>1,000 Head</i>	<i>Pounds</i>	<i>Pounds</i>	<i>Million Pounds</i>	<i>Million Pounds</i>	<i>Percent</i>
AZ	145	150	2,200	2,125	319	319	
CA	1,639	1,693	1,875	1,820	3,073	3,081	0.3
FL	151	144	1,460	1,440	220	207	-5.9
ID	387	398	1,820	1,870	704	744	5.7
IL	115	110	1,630	1,650	187	182	-2.7
IN	152	144	1,545	1,580	235	228	-3.0
IA	209	203	1,630	1,640	341	333	-2.3
KY	123	120	1,230	1,145	151	137	-9.3
MI	298	300	1,745	1,775	520	533	2.5
MN	490	475	1,540	1,545	755	734	-2.8
MO	137	130	1,315	1,345	180	175	-2.8
NM	296	315	1,910	1,890	565	595	5.3
NY	682	682	1,600	1,570	1,091	1,071	-1.8
OH	263	261	1,550	1,560	408	407	-0.2
PA	580	580	1,650	1,600	957	928	-3.0
TX	309	312	1,570	1,645	485	513	5.8
VT	154	150	1,570	1,555	242	233	-3.7
VA	120	118	1,425	1,345	171	159	-7.0
WA	247	244	2,005	1,985	495	484	-2.2
WI	1,272	1,257	1,525	1,535	1,940	1,929	-0.6
20-State Total	7,769	7,786	1,678	1,669	13,039	12,992	-0.4

¹ Includes dry cows, excludes heifers not yet fresh.

² Excludes milk sucked by calves.

**May Milk Production, 1994-2003
20 States**



Milk Cows and Production: By State, April 2002-2003 ¹

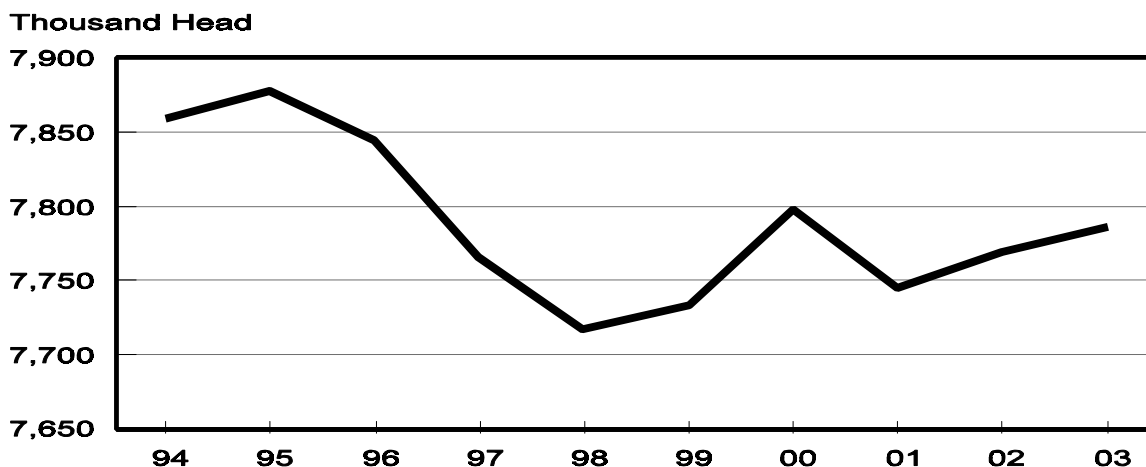
State	Milk Cows ²		Milk per Cow ³		Milk Production ³		
	2002	2003	2002	2003	2002	2003	Change From 2002
	<i>1,000 Head</i>	<i>1,000 Head</i>	<i>Pounds</i>	<i>Pounds</i>	<i>Million Pounds</i>	<i>Million Pounds</i>	<i>Percent</i>
AZ	144	150	2,195	2,115	316	317	0.3
CA	1,635	1,693	1,795	1,780	2,935	3,014	2.7
FL	151	145	1,455	1,435	220	208	-5.5
ID	382	397	1,740	1,800	665	715	7.5
IL	115	111	1,610	1,610	185	179	-3.2
IN	152	145	1,480	1,530	225	222	-1.3
IA	209	203	1,585	1,610	331	327	-1.2
KY	123	120	1,240	1,140	153	137	-10.5
MI	296	300	1,675	1,695	496	509	2.6
MN	490	475	1,510	1,500	740	713	-3.6
MO	138	130	1,325	1,325	183	172	-6.0
NM	295	315	1,815	1,810	535	570	6.5
NY	680	684	1,520	1,495	1,034	1,023	-1.1
OH	262	261	1,470	1,490	385	389	1.0
PA	581	582	1,600	1,575	930	917	-1.4
TX	309	312	1,585	1,640	490	512	4.5
VT	154	150	1,495	1,495	230	224	-2.6
VA	120	118	1,410	1,330	169	157	-7.1
WA	247	247	1,910	1,900	472	469	-0.6
WI	1,275	1,260	1,475	1,485	1,881	1,871	-0.5
20-State Total	7,758	7,798	1,621	1,622	12,575	12,645	0.6

¹ 2003 revised.

² Includes dry cows, excludes heifers not yet fresh.

³ Excludes milk sucked by calves.

**May Milk Cows, 1994-2003
20 States**



Reliability Statement

Survey Procedures: Primary data used to determine these estimates were obtained from a sample of producers. Individual States maintain a list of all known milk producers and information on the size of their herd. States use all known sources of producers to ensure that their lists are as complete as possible. Generally, all large producers and a sample of small producers are included in the survey. Questionnaires are mailed to producers near the end of the month to obtain data for the first day of the month. Additional reports are obtained by telephone, as needed, to supplement the mail response. Where feasible, States utilize state and federal administrative data, rather than conduct a monthly or quarterly survey, to estimate milk production. This eliminates duplication of data gathering by different government agencies. Indications of milk cow inventory are also obtained in the January and July Cattle Surveys.

Estimation Procedures: State offices prepare these estimates by using a combination of survey indications, historic trends, and any available administrative data. Individual State estimates are reviewed by the Agricultural Statistics Board for reasonableness.

Revision Policy: Milk production, rate per cow, and number of cows are subject to revision the following month for monthly States or the following quarter for the quarterly States. Normally, Federal Market Order sales are the main basis for revisions. However, data for all orders are not available in time for this revision. Estimates are again subject to revisions in February each year based on additional administrative data. In the event that additional changes are necessary, a third revision is possible in February the following year. Estimates are again reviewed after data from the five-year Census of Agriculture are available. No revisions are made after that date.

Reliability: Since all operations with dairy animals are not included in the sample, survey estimates are subject to sampling variability. Survey results are also subject to non-sampling errors such as omissions, duplications, and mistakes in reporting, recording, and processing the data. The effects of these errors cannot be measured directly. They are minimized through rigid quality controls in the data collection process and through a careful review of all reported data for consistency and reasonableness.

To assist users in evaluating the reliability of the estimates in this report, the "Root Mean Square Error" is shown for selected items on the next page. The "Root Mean Square Error" is a statistical measure based on past performance and is computed using the differences between first and final estimates. The "Root Mean Square Error" for milk cow inventory estimates over the past 10 January-March quarters is 0.7 percent. This means that chances are 2 out of 3 that the final January-March estimate will not be above or below the current estimate of 9.15 million head by more than 0.7 percent. Chances are 9 out of 10 that the difference will not exceed 1.2 percent.

Reliability of January-March Milk Estimates ¹

Item	Root Mean Square Error	90% Confidence Level		Difference Between First and Latest Estimates			Quarters	
				Average	Smallest	Largest	First Above Latest	First Below Latest
				<i>Million Pounds</i>	<i>Million Pounds</i>	<i>Million Pounds</i>	<i>Number</i>	<i>Number</i>
Milk Production	<i>Percent</i>	<i>Percent</i>	<i>Million Pounds</i>	<i>Million Pounds</i>	<i>Million Pounds</i>	<i>Million Pounds</i>	<i>Number</i>	<i>Number</i>
	0.4	0.7	301	125	18	329	6	4
All Milk Cows	<i>Percent</i>	<i>Percent</i>	<i>1,000 Head</i>	<i>1,000 Head</i>	<i>1,000 Head</i>	<i>1,000 Head</i>	<i>Number</i>	<i>Number</i>
	0.7	1.2	110	39	0	143	6	3

¹ Based on records for the past 10 January-March quarters.

The next "Milk Production" report will be released at 3 p.m. ET on July 17, 2003.

The United States Department of Agriculture (USDA) prohibits discrimination in all its programs on the basis of race, color, national origin, gender, religion, age, disability, political beliefs, sexual orientation, and marital or family status. (Not all prohibited bases apply to all programs.) Persons with disabilities who require alternative means for communication of program information (braille, large print, audiotape, etc.) should contact the USDA's TARGET Center at 202-720-2600 (voice and TDD).

To file a complaint of discrimination, write USDA, Director, Office of Civil Rights, Room 326-W, Whitten Building, 1400 Independence Avenue, SW, Washington, D.C., 20250-9410, or call 202-720-5964 (voice or TDD). USDA is an equal opportunity provider and employer.

ACCESS TO REPORTS!!

For your convenience, there are several ways to obtain NASS reports, data products, and services:

INTERNET ACCESS

All NASS reports are available free of charge on the worldwide Internet. For access, connect to the Internet and go to the NASS Home Page at: <http://www.usda.gov/nass/>. Select "Today's Reports" or Publications and then Reports Calendar or Publications and then Search, by Title or Subject.

E-MAIL SUBSCRIPTION

All NASS reports are available by subscription free of charge direct to your e-mail address. Starting with the NASS Home Page at <http://www.usda.gov/nass/>, click on **Publications**, then click on the **Subscribe by E-mail** button which takes you to the page describing e-mail delivery of reports. Finally, click on **Go to the Subscription Page** and follow the instructions.

AUTOFAX ACCESS

NASSFax service is available for some reports from your fax machine. Please call 202-720-2000, using the handset attached to your fax. Respond to the voice prompts. Document 0411 is a list of available reports.

PRINTED REPORTS OR DATA PRODUCTS

CALL OUR TOLL-FREE ORDER DESK: 800-999-6779 (U.S. and Canada)
Other areas, please call 703-605-6220 FAX: 703-605-6900
(Visa, MasterCard, check, or money order acceptable for payment.)

ASSISTANCE

For **assistance** with general agricultural statistics or further information about NASS or its products or services, contact the **Agricultural Statistics Hotline** at **800-727-9540**, 7:30 a.m. to 4:00 p.m. ET, or e-mail: nass@nass.usda.gov.
