

Released July 17, 2003, by the National Agricultural Statistics Service (NASS), Agricultural Statistics Board, U.S. Department of Agriculture. For information on "Milk Production" call Ty Kalas at 202-690-3236, office hours 7:30 a.m. to 4:00 p.m. ET.

June Milk Production Down 0.1 Percent

Milk production in the 20 major States during June totaled 12.3 billion pounds, down 0.1 percent from June 2002. May revised production, at 13.0 billion pounds, was down 0.4 percent from May 2002. The May revision represented a decrease of 9 million pounds from last month's preliminary production estimate.

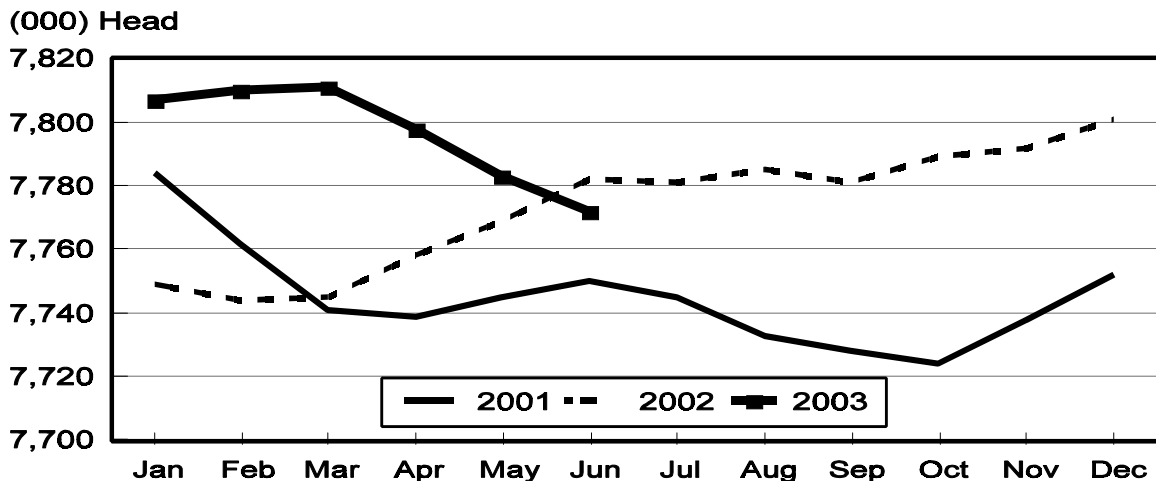
Production per cow in the 20 major States averaged 1,587 pounds for June, unchanged from June 2002.

The number of milk cows on farms in the 20 major States was 7.77 million head, 10,000 head less than June 2002, and 11,000 head less than May 2003.

April-June Milk Production Down 0.3 Percent

Milk production in the U.S. during the April-June quarter totaled 43.9 billion pounds, down 0.3 percent from the April-June quarter last year. The average number of milk cows in the U.S. during the quarter was 9.11 million head, 35,000 head less than the same period last year.

Monthly Milk Cows 20 States



Milk Cows and Production: By Quarter, United States, 2002-2003 ¹

Quarter	Milk Cows ²		Milk Per Cow ³		Milk Production ³		
	2002	2003	2002	2003	2002	2003	Change From 2002
	<i>1,000 Head</i>	<i>1,000 Head</i>	<i>Pounds</i>	<i>Pounds</i>	<i>Million Pounds</i>	<i>Million Pounds</i>	<i>Percent</i>
Jan-Mar	9,112	9,154	4,653	4,691	42,397	42,939	1.3
Apr-Jun	9,149	9,114	4,811	4,813	44,015	43,862	-0.3
Jul-Sep	9,153		4,566		41,791		
Oct-Dec	9,148		4,543		41,555		
Annual	9,141		18,571		169,758		

¹ May not add due to rounding.

² Includes dry cows, excludes heifers not yet fresh.

³ Excludes milk sucked by calves.

Milk Cows and Production: By Month, 20 Selected States, 2002-2003 ¹

Month	Milk Cows ²		Milk Per Cow ³		Milk Production ³		
	2002	2003	2002	2003	2002	2003	Change From 2002
	<i>1,000 Head</i>	<i>1,000 Head</i>	<i>Pounds</i>	<i>Pounds</i>	<i>Million Pounds</i>	<i>Million Pounds</i>	<i>Percent</i>
Jan	7,749	7,807	1,591	1,607	12,327	12,548	1.8
Feb	7,744	7,810	1,472	1,484	11,401	11,588	1.6
Mar	7,745	7,811	1,654	1,660	12,810	12,969	1.2
Apr	7,758	7,798	1,621	1,622	12,575	12,645	0.6
May	7,769	7,783	1,678	1,668	13,039	12,983	-0.4
Jun	7,782	7,772	1,587	1,587	12,348	12,333	-0.1
Jul	7,781		1,578		12,281		
Aug	7,785		1,570		12,223		
Sep	7,781		1,497		11,648		
Oct	7,789		1,539		11,991		
Nov	7,792		1,496		11,657		
Dec	7,801		1,575		12,290		
Annual	7,773		18,858		146,590		

¹ 2003 revised.

² Includes dry cows, excludes heifers not yet fresh.

³ Excludes milk sucked by calves.

Estimated Milk Cows and Production: By Month, United States, 2002-2003 ¹

Month	Milk Cows ²		Milk Per Cow ³		Milk Production ³		
	2002	2003	2002	2003	2002	2003	Change From 2002
	<i>1,000 Head</i>	<i>1,000 Head</i>	<i>Pounds</i>	<i>Pounds</i>	<i>Million Pounds</i>	<i>Million Pounds</i>	<i>Percent</i>
Jan	9,117	9,153	1,569	1,587	14,304	14,521	1.5
Feb	9,109	9,155	1,452	1,465	13,229	13,409	1.4
Mar	9,110	9,155	1,632	1,639	14,864	15,009	1.0
Apr	9,132	9,134	1,597	1,600	14,580	14,610	0.2
May	9,149	9,112	1,652	1,646	15,118	15,002	-0.8
Jun	9,166	9,097	1,562	1,567	14,317	14,250	-0.5
Jul	9,158		1,550		14,196		
Aug	9,157		1,543		14,128		
Sep	9,145		1,473		13,467		
Oct	9,147		1,516		13,866		
Nov	9,146		1,474		13,478		
Dec	9,150		1,553		14,211		
Annual	9,141		18,571		169,758		

¹ 2003 revised.

² Includes dry cows, excludes heifers not yet fresh.

³ Excludes milk sucked by calves.

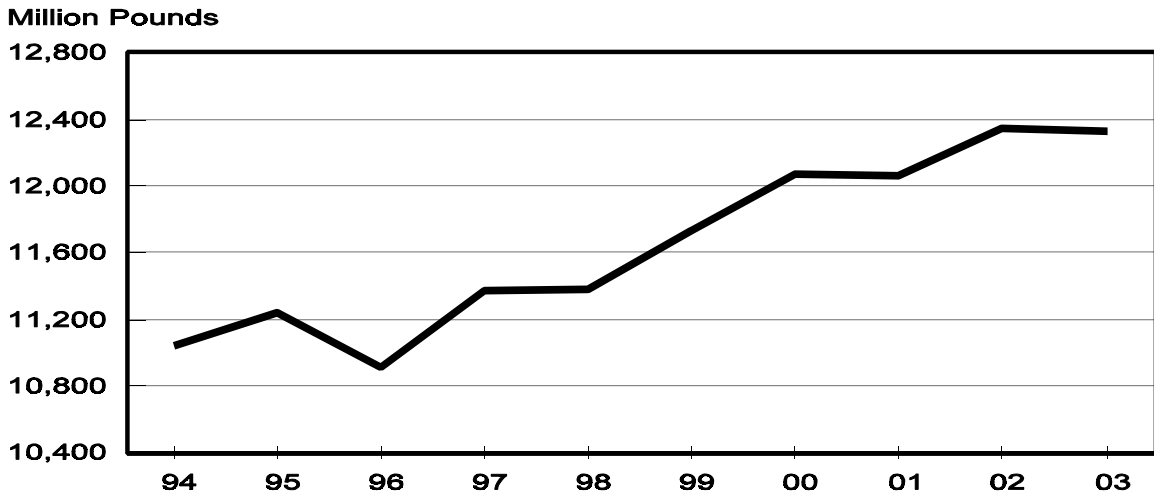
Milk Cows and Production: By State, June 2002-2003

State	Milk Cows ¹		Milk Per Cow ²		Milk Production ²		
	2002	2003	2002	2003	2002	2003	Change From 2002
	<i>1,000 Head</i>	<i>1,000 Head</i>	<i>Pounds</i>	<i>Pounds</i>	<i>Million Pounds</i>	<i>Million Pounds</i>	<i>Percent</i>
AZ	145	150	1,985	1,965	288	295	2.4
CA	1,645	1,691	1,800	1,755	2,961	2,968	0.2
FL	150	142	1,340	1,300	201	185	-8.0
ID	391	401	1,770	1,830	692	734	6.1
IL	115	110	1,470	1,525	169	168	-0.6
IN	151	143	1,440	1,500	217	215	-0.9
IA	210	201	1,510	1,550	317	312	-1.6
KY	123	118	1,080	1,015	133	120	-9.8
MI	300	299	1,665	1,710	500	511	2.2
MN	490	475	1,445	1,455	708	691	-2.4
MO	137	130	1,170	1,220	160	159	-0.6
NM	298	315	1,810	1,795	539	565	4.8
NY	682	681	1,530	1,490	1,043	1,015	-2.7
OH	264	261	1,425	1,460	376	381	1.3
PA	582	578	1,535	1,480	893	855	-4.3
TX	307	312	1,430	1,510	439	471	7.3
VT	154	148	1,500	1,500	231	222	-3.9
VA	120	117	1,300	1,250	156	146	-6.4
WA	248	244	1,925	1,915	477	467	-2.1
WI	1,270	1,256	1,455	1,475	1,848	1,853	0.3
20-State Total	7,782	7,772	1,587	1,587	12,348	12,333	-0.1

¹ Includes dry cows, excludes heifers not yet fresh.

² Excludes milk sucked by calves.

**June Milk Production, 1994-2003
20 States**



Milk Cows and Production: By State, May 2002-2003 ¹

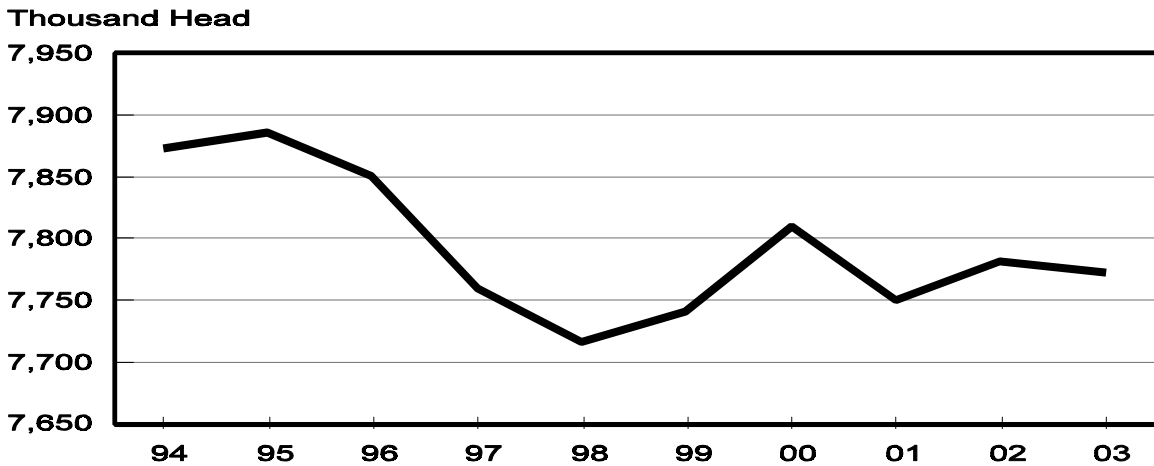
State	Milk Cows ²		Milk per Cow ³		Milk Production ³		
	2002	2003	2002	2003	2002	2003	Change From 2002
	<i>1,000 Head</i>	<i>1,000 Head</i>	<i>Pounds</i>	<i>Pounds</i>	<i>Million Pounds</i>	<i>Million Pounds</i>	<i>Percent</i>
AZ	145	150	2,200	2,125	319	319	
CA	1,639	1,692	1,875	1,820	3,073	3,079	0.2
FL	151	143	1,460	1,430	220	204	-7.3
ID	387	400	1,820	1,870	704	748	6.3
IL	115	110	1,630	1,650	187	182	-2.7
IN	152	144	1,545	1,580	235	228	-3.0
IA	209	203	1,630	1,640	341	333	-2.3
KY	123	119	1,230	1,125	151	134	-11.3
MI	298	300	1,745	1,775	520	533	2.5
MN	490	475	1,540	1,540	755	732	-3.0
MO	137	130	1,315	1,345	180	175	-2.8
NM	296	315	1,910	1,890	565	595	5.3
NY	682	682	1,600	1,560	1,091	1,064	-2.5
OH	263	261	1,550	1,560	408	407	-0.2
PA	580	580	1,650	1,600	957	928	-3.0
TX	309	312	1,570	1,645	485	513	5.8
VT	154	149	1,570	1,565	242	233	-3.7
VA	120	117	1,425	1,350	171	158	-7.6
WA	247	244	2,005	1,975	495	482	-2.6
WI	1,272	1,257	1,525	1,540	1,940	1,936	-0.2
20-State Total	7,769	7,783	1,678	1,668	13,039	12,983	-0.4

¹ 2003 revised.

² Includes dry cows, excludes heifers not yet fresh.

³ Excludes milk sucked by calves.

**June Milk Cows, 1994-2003
20 States**



**Milk Cows and Production: By State and United States,
Revised January-March, 2002-2003**

State	Jan-Mar Milk Cows ¹		Jan-Mar Milk Production ²		Change From 2002
	2002	2003	2002	2003	
	<i>1,000 Head</i>	<i>1,000 Head</i>	<i>Million Pounds</i>	<i>Million Pounds</i>	<i>Percent</i>
AL	20	18	79	70	-11.4
AK	1.2	1.3	4.02	4.33	7.7
AZ	142	150	894	915	2.3
AR	33	30	107	96	-10.3
CA	1,627	1,686	8,453	8,827	4.4
CO	97	101	521	547	5.0
CT	24	23	116	108	-6.9
DE	9.5	9.0	42.0	40.5	-3.6
FL	152	147	644	629	-2.3
GA	85	85	395	399	1.0
HI	6.7	6.6	24.5	24.0	-2.0
ID	381	394	1,942	2,087	7.5
IL	115	114	530	538	1.5
IN	154	146	660	655	-0.8
IA	208	205	956	965	0.9
KS	100	104	480	535	11.5
KY	123	120	432	390	-9.7
LA	51	48	170	149	-12.4
ME	38	35	164	155	-5.5
MD	81	79	333	327	-1.8
MA	21	20	91	88	-3.3
MI	296	300	1,456	1,506	3.4
MN	493	480	2,200	2,134	-3.0
MS	34	32	139	122	-12.2
MO	139	133	513	495	-3.5
MT	18	18	83	85	2.4
NE	68	66	299	297	-0.7
NV	25	26	118	127	7.6
NH	18	17	84	79	-6.0
NJ	13	13	60	57	-5.0
NM	291	313	1,508	1,622	7.6
NY	674	682	3,033	3,019	-0.5
NC	65	62	298	279	-6.4
ND	41	37	148	143	-3.4
OH	260	260	1,132	1,120	-1.1
OK	88	88	328	333	1.5
OR	105	117	486	526	8.2
PA	584	588	2,720	2,686	-1.3
RI	1.4	1.4	5.8	5.8	
SC	20	20	102	95	-6.9
SD	97	93	363	349	-3.9
TN	90	82	350	325	-7.1
TX	310	311	1,392	1,448	4.0
UT	93	92	391	399	2.0
VT	154	152	681	668	-1.9
VA	120	118	496	459	-7.5
WA	247	248	1,370	1,392	1.6
WV	16	15	62	56	-9.7
WI	1,278	1,264	5,526	5,550	0.4
WY	4.5	3.9	15.8	13.3	-15.8
US ³	9,112	9,154	42,397	42,939	1.3

¹ Includes dry cows, excludes heifers not yet fresh.

² Excludes milk sucked by calves.

³ May not add due to rounding.

**Milk Cows and Production: By State and United States,
Preliminary April-June, 2002-2003**

State	Apr-Jun Milk Cows ¹		Apr-Jun Milk Production ²		Change From 2002
	2002	2003	2002	2003	
	<i>1,000 Head</i>	<i>1,000 Head</i>	<i>Million Pounds</i>	<i>Million Pounds</i>	<i>Percent</i>
AL	20	18	76	69	-9.2
AK	1.2	1.3	4.36	4.49	3.0
AZ	145	150	923	931	0.9
AR	33	30	111	100	-9.9
CA	1,640	1,692	8,969	9,061	1.0
CO	102	100	548	547	-0.2
CT	24	22	117	106	-9.4
DE	9.5	9.0	41.0	39.0	-4.9
FL	151	143	641	597	-6.9
GA	85	85	401	407	1.5
HI	6.7	6.5	25.7	24.4	-5.1
ID	387	399	2,061	2,197	6.6
IL	115	110	541	529	-2.2
IN	152	144	677	665	-1.8
IA	209	202	989	972	-1.7
KS	104	103	515	540	4.9
KY	123	119	437	391	-10.5
LA	51	47	160	143	-10.6
ME	38	35	171	161	-5.8
MD	81	79	343	331	-3.5
MA	21	20	94	89	-5.3
MI	298	300	1,516	1,553	2.4
MN	490	475	2,203	2,136	-3.0
MS	34	32	133	118	-11.3
MO	137	130	523	506	-3.3
MT	18	18	86	84	-2.3
NE	67	65	298	293	-1.7
NV	25	26	123	133	8.1
NH	18	16	85	79	-7.1
NJ	13	13	61	57	-6.6
NM	296	315	1,639	1,730	5.6
NY	681	682	3,168	3,102	-2.1
NC	65	61	302	272	-9.9
ND	40	36	152	143	-5.9
OH	263	261	1,169	1,177	0.7
OK	88	87	334	337	0.9
OR	115	120	538	561	4.3
PA	581	580	2,780	2,700	-2.9
RI	1.4	1.3	6.1	5.8	-4.9
SC	20	19	99	86	-13.1
SD	97	91	365	366	0.3
TN	90	79	360	320	-11.1
TX	308	312	1,414	1,496	5.8
UT	92	92	423	414	-2.1
VT	154	149	703	679	-3.4
VA	120	117	496	461	-7.1
WA	247	245	1,444	1,418	-1.8
WV	16	15	64	58	-9.4
WI	1,272	1,258	5,669	5,660	-0.2
WY	4.6	3.8	17.0	13.3	-21.8
US ³	9,149	9,114	44,015	43,862	-0.3

¹ Includes dry cows, excludes heifers not yet fresh.

² Excludes milk sucked by calves.

³ May not add due to rounding.

Reliability Statement

Survey Procedures: Primary data used to determine these estimates were obtained from a sample of producers. Individual States maintain a list of all known milk producers and information on the size of their herd. States use all known sources of producers to ensure that their lists are as complete as possible. Generally, all large producers and a sample of small producers are included in the survey. Questionnaires are mailed to producers near the end of the month to obtain data for the first day of the month. Additional reports are obtained by telephone, as needed, to supplement the mail response. Where feasible, States utilize state and federal administrative data, rather than conduct a monthly or quarterly survey, to estimate milk production. This eliminates duplication of data gathering by different government agencies. Indications of milk cow inventory are also obtained in the January and July Cattle Surveys.

Estimation Procedures: State offices prepare these estimates by using a combination of survey indications, historic trends, and any available administrative data. Individual State estimates are reviewed by the Agricultural Statistics Board for reasonableness.

Revision Policy: Milk production, rate per cow, and number of cows are subject to revision the following month for monthly States or the following quarter for the quarterly States. Normally, Federal Market Order sales are the main basis for revisions. However, data for all orders are not available in time for this revision. Estimates are again subject to revisions in February each year based on additional administrative data. In the event that additional changes are necessary, a third revision is possible in February the following year. Estimates are again reviewed after data from the five-year Census of Agriculture are available. No revisions are made after that date.

Reliability: Since all operations with dairy animals are not included in the sample, survey estimates are subject to sampling variability. Survey results are also subject to non-sampling errors such as omissions, duplications, and mistakes in reporting, recording, and processing the data. The effects of these errors cannot be measured directly. They are minimized through rigid quality controls in the data collection process and through a careful review of all reported data for consistency and reasonableness.

To assist users in evaluating the reliability of the estimates in this report, the "Root Mean Square Error" is shown for selected items on the next page. The "Root Mean Square Error" is a statistical measure based on past performance and is computed using the differences between first and final estimates. The "Root Mean Square Error" for milk cow inventory estimates over the past 10 April-June quarters is 0.7 percent. This means that chances are 2 out of 3 that the final April-June estimate will not be above or below the current estimate of 9.11 million head by more than 0.7 percent. Chances are 9 out of 10 that the difference will not exceed 1.3 percent.

Reliability of April-June Milk Estimates ¹

Item	Root Mean Square Error	90% Confidence Level		Difference Between First and Latest Estimates			Quarters	
				Average	Smallest	Largest	First Above Latest	First Below Latest
				<i>Million Pounds</i>	<i>Million Pounds</i>	<i>Million Pounds</i>	<i>Number</i>	<i>Number</i>
Milk Production	<i>Percent</i> 0.3	<i>Percent</i> 0.6	<i>Million Pounds</i> 263	<i>Million Pounds</i> 103	<i>Million Pounds</i> 3	<i>Million Pounds</i> 264	<i>Number</i> 7	<i>Number</i> 3
All Milk Cows	<i>Percent</i> 0.7	<i>Percent</i> 1.3	<i>1,000 Head</i> 118	<i>1,000 Head</i> 40	<i>1,000 Head</i> 1	<i>1,000 Head</i> 145	<i>Number</i> 6	<i>Number</i> 4

¹ Based on records for the past 10 April-June quarters.

The next "*Milk Production*" report will be released at 3 p.m. ET on August 15, 2003.

The United States Department of Agriculture (USDA) prohibits discrimination in all its programs on the basis of race, color, national origin, gender, religion, age, disability, political beliefs, sexual orientation, and marital or family status. (Not all prohibited bases apply to all programs.) Persons with disabilities who require alternative means for communication of program information (braille, large print, audiotape, etc.) should contact the USDA's TARGET Center at 202-720-2600 (voice and TDD).

To file a complaint of discrimination, write USDA, Director, Office of Civil Rights, Room 326-W, Whitten Building, 1400 Independence Avenue, SW, Washington, D.C., 20250-9410, or call 202-720-5964 (voice or TDD). USDA is an equal opportunity provider and employer.

ACCESS TO REPORTS!!

For your convenience, there are several ways to obtain NASS reports, data products, and services:

INTERNET ACCESS

All NASS reports are available free of charge on the worldwide Internet. For access, connect to the Internet and go to the NASS Home Page at: <http://www.usda.gov/nass/>. Select "Today's Reports" or Publications and then Reports Calendar or Publications and then Search, by Title or Subject.

E-MAIL SUBSCRIPTION

All NASS reports are available by subscription free of charge direct to your e-mail address. Starting with the NASS Home Page at <http://www.usda.gov/nass/>, click on **Publications**, then click on the **Subscribe by E-mail** button which takes you to the page describing e-mail delivery of reports. Finally, click on **Go to the Subscription Page** and follow the instructions.

AUTOFAX ACCESS

NASSFax service is available for some reports from your fax machine. Please call 202-720-2000, using the handset attached to your fax. Respond to the voice prompts. Document 0411 is a list of available reports.

PRINTED REPORTS OR DATA PRODUCTS

CALL OUR TOLL-FREE ORDER DESK: 800-999-6779 (U.S. and Canada)
Other areas, please call 703-605-6220 FAX: 703-605-6900
(Visa, MasterCard, check, or money order acceptable for payment.)

ASSISTANCE

For **assistance** with general agricultural statistics or further information about NASS or its products or services, contact the **Agricultural Statistics Hotline** at **800-727-9540**, 7:30 a.m. to 4:00 p.m. ET, or e-mail: nass@nass.usda.gov.
