

# Milk Production

Released August 15, 2003, by the National Agricultural Statistics Service (NASS), Agricultural Statistics Board, U.S. Department of Agriculture. For information on "Milk Production" call Ty Kalaus at 202-690-3236, office hours 7:30 a.m. to 4:00 p.m. ET.

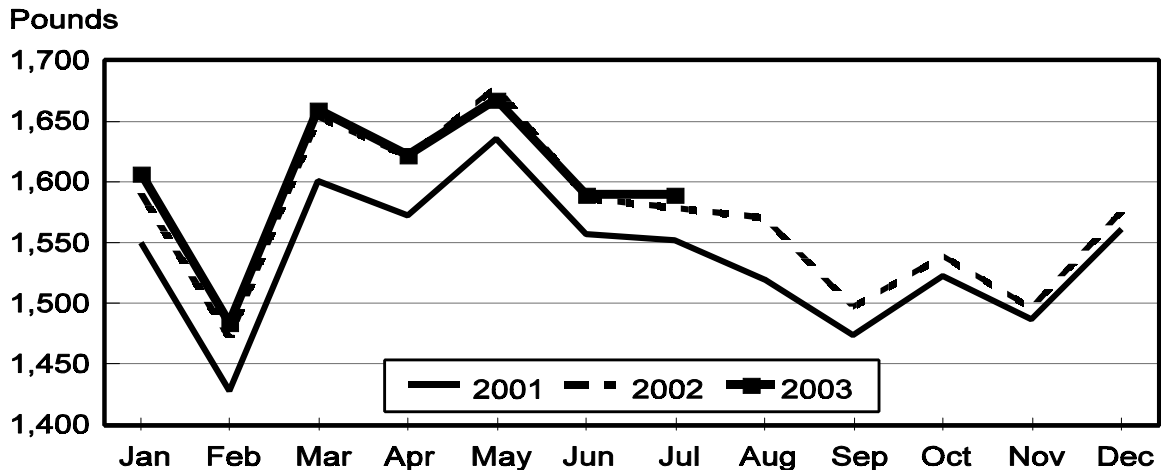
## July Milk Production Up 0.6 Percent

**Milk production** in the 20 major States during July totaled 12.4 billion pounds, up 0.6 percent from July 2002. June revised production, at 12.4 billion pounds, was up 0.1 percent from June 2002. The June revision represented an increase of 0.3 percent or 33 million pounds from last month's preliminary production estimate.

**Production per cow** in the 20 major States averaged 1,590 pounds for July, 12 pounds above July 2002.

**The number of milk cows** on farms in the 20 major States was 7.77 million head, 15,000 head less than July 2002, and 9,000 head less than June 2003.

## Monthly Milk per Cow 20 States



**Milk Cows and Production: By Quarter, United States, 2002-2003<sup>1</sup>**

Quarter	Milk Cows <sup>2</sup>		Milk Per Cow <sup>3</sup>		Milk Production <sup>3</sup>		
	2002	2003	2002	2003	2002	2003	Change From 2002
	<i>1,000 Head</i>	<i>1,000 Head</i>	<i>Pounds</i>	<i>Pounds</i>	<i>Million Pounds</i>	<i>Million Pounds</i>	<i>Percent</i>
Jan-Mar	9,112	9,154	4,653	4,691	42,397	42,939	1.3
Apr-Jun <sup>4</sup>	9,149	9,116	4,811	4,815	44,015	43,895	-0.3
Jul-Sep	9,153		4,566		41,791		
Oct-Dec	9,148		4,543		41,555		
Annual	9,141		18,571		169,758		

<sup>1</sup> May not add due to rounding.

<sup>2</sup> Includes dry cows, excludes heifers not yet fresh.

<sup>3</sup> Excludes milk sucked by calves.

<sup>4</sup> June 2003 revised.

**Milk Cows and Production: By Month, 20 Selected States, 2002-2003<sup>1</sup>**

Month	Milk Cows <sup>2</sup>		Milk Per Cow <sup>3</sup>		Milk Production <sup>3</sup>		
	2002	2003	2002	2003	2002	2003	Change From 2002
	<i>1,000 Head</i>	<i>1,000 Head</i>	<i>Pounds</i>	<i>Pounds</i>	<i>Million Pounds</i>	<i>Million Pounds</i>	<i>Percent</i>
Jan	7,749	7,807	1,591	1,607	12,327	12,548	1.8
Feb	7,744	7,810	1,472	1,484	11,401	11,588	1.6
Mar	7,745	7,811	1,654	1,660	12,810	12,969	1.2
Apr	7,758	7,798	1,621	1,622	12,575	12,645	0.6
May	7,769	7,783	1,678	1,668	13,039	12,983	-0.4
Jun	7,782	7,775	1,587	1,590	12,348	12,366	0.1
Jul	7,781	7,766	1,578	1,590	12,281	12,350	0.6
Aug	7,785		1,570		12,223		
Sep	7,781		1,497		11,648		
Oct	7,789		1,539		11,991		
Nov	7,792		1,496		11,657		
Dec	7,801		1,575		12,290		
Annual	7,773		18,858		146,590		

<sup>1</sup> 2003 revised.

<sup>2</sup> Includes dry cows, excludes heifers not yet fresh.

<sup>3</sup> Excludes milk sucked by calves.

**Estimated Milk Cows and Production: By Month, United States, 2002-2003<sup>1</sup>**

Month	Milk Cows <sup>2</sup>		Milk Per Cow <sup>3</sup>		Milk Production <sup>3</sup>		
	2002	2003	2002	2003	2002	2003	Change From 2002
	<i>1,000 Head</i>	<i>1,000 Head</i>	<i>Pounds</i>	<i>Pounds</i>	<i>Million Pounds</i>	<i>Million Pounds</i>	<i>Percent</i>
Jan	9,117	9,153	1,569	1,587	14,304	14,521	1.5
Feb	9,109	9,155	1,452	1,465	13,229	13,409	1.4
Mar	9,110	9,155	1,632	1,639	14,864	15,009	1.0
Apr	9,132	9,134	1,597	1,600	14,580	14,610	0.2
May	9,149	9,113	1,652	1,646	15,118	15,002	-0.8
Jun	9,166	9,102	1,562	1,569	14,317	14,283	-0.2
Jul	9,158	9,087	1,550	1,568	14,196	14,245	0.3
Aug	9,157		1,543		14,128		
Sep	9,145		1,473		13,467		
Oct	9,147		1,516		13,866		
Nov	9,146		1,474		13,478		
Dec	9,150		1,553		14,211		
Annual	9,141		18,571		169,758		

<sup>1</sup> 2003 revised.

<sup>2</sup> Includes dry cows, excludes heifers not yet fresh.

<sup>3</sup> Excludes milk sucked by calves.

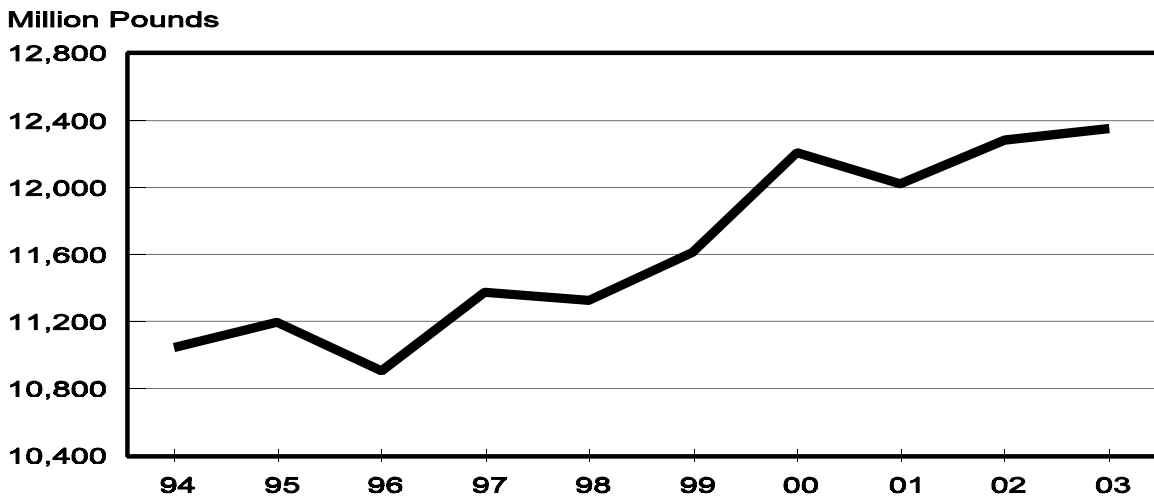
**Milk Cows and Production: By State, July 2002-2003**

State	Milk Cows <sup>1</sup>		Milk Per Cow <sup>2</sup>		Milk Production <sup>2</sup>		
	2002	2003	2002	2003	2002	2003	Change From 2002
	<i>1,000 Head</i>	<i>1,000 Head</i>	<i>Pounds</i>	<i>Pounds</i>	<i>Million Pounds</i>	<i>Million Pounds</i>	<i>Percent</i>
AZ	148	150	1,850	1,805	274	271	-1.1
CA	1,647	1,693	1,810	1,750	2,981	2,963	-0.6
FL	149	141	1,250	1,220	186	172	-7.5
ID	392	408	1,810	1,880	710	767	8.0
IL	115	109	1,420	1,490	163	162	-0.6
IN	150	143	1,410	1,505	212	215	1.4
IA	210	200	1,495	1,560	314	312	-0.6
KY	123	115	1,035	1,005	127	116	-8.7
MI	301	299	1,665	1,750	501	523	4.4
MN	485	475	1,415	1,455	686	691	0.7
MO	137	129	1,120	1,170	153	151	-1.3
NM	303	316	1,810	1,795	548	567	3.5
NY	680	679	1,535	1,500	1,044	1,019	-2.4
OH	263	261	1,390	1,450	366	378	3.3
PA	584	574	1,525	1,500	891	861	-3.4
TX	307	312	1,355	1,430	416	446	7.2
VT	154	148	1,480	1,505	228	223	-2.2
VA	120	115	1,275	1,210	153	139	-9.2
WA	248	244	1,965	1,965	487	479	-1.6
WI	1,265	1,255	1,455	1,510	1,841	1,895	2.9
20-State Total	7,781	7,766	1,578	1,590	12,281	12,350	0.6

<sup>1</sup> Includes dry cows, excludes heifers not yet fresh.

<sup>2</sup> Excludes milk sucked by calves.

**July Milk Production, 1994-2003  
20 States**



**Milk Cows and Production: By State, June 2002-2003 <sup>1</sup>**

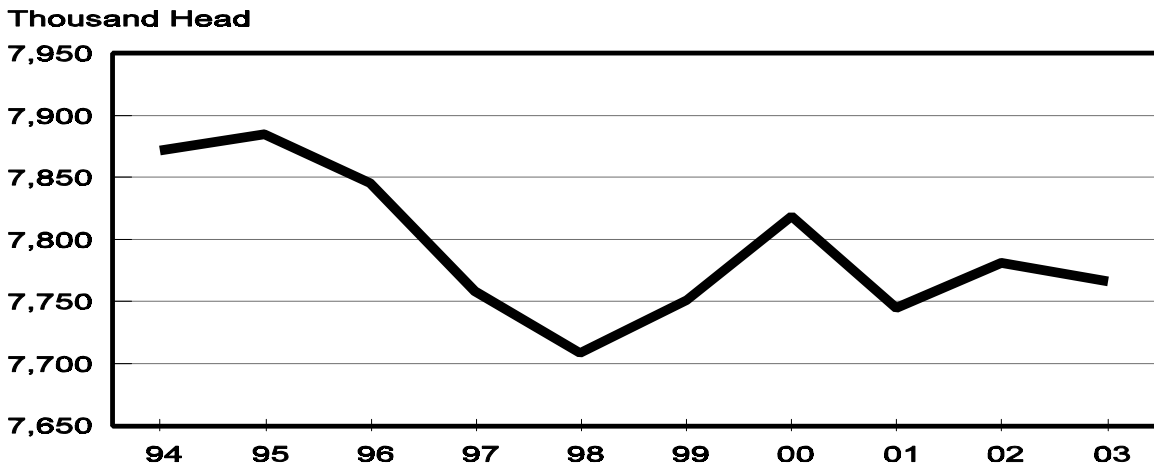
State	Milk Cows <sup>2</sup>		Milk per Cow <sup>3</sup>		Milk Production <sup>3</sup>		
	2002	2003	2002	2003	2002	2003	Change From 2002
	<i>1,000 Head</i>	<i>1,000 Head</i>	<i>Pounds</i>	<i>Pounds</i>	<i>Million Pounds</i>	<i>Million Pounds</i>	<i>Percent</i>
AZ	145	150	1,985	1,965	288	295	2.4
CA	1,645	1,691	1,800	1,750	2,961	2,959	-0.1
FL	150	142	1,340	1,295	201	184	-8.5
ID	391	407	1,770	1,840	692	749	8.2
IL	115	110	1,470	1,525	169	168	-0.6
IN	151	143	1,440	1,500	217	215	-0.9
IA	210	201	1,510	1,550	317	312	-1.6
KY	123	117	1,080	1,025	133	120	-9.8
MI	300	299	1,665	1,710	500	511	2.2
MN	490	475	1,445	1,470	708	698	-1.4
MO	137	130	1,170	1,220	160	159	-0.6
NM	298	315	1,810	1,795	539	565	4.8
NY	682	680	1,530	1,490	1,043	1,013	-2.9
OH	264	261	1,425	1,450	376	378	0.5
PA	582	578	1,535	1,480	893	855	-4.3
TX	307	312	1,430	1,510	439	471	7.3
VT	154	148	1,500	1,500	231	222	-3.9
VA	120	116	1,300	1,220	156	142	-9.0
WA	248	244	1,925	1,910	477	466	-2.3
WI	1,270	1,256	1,455	1,500	1,848	1,884	1.9
20-State Total	7,782	7,775	1,587	1,590	12,348	12,366	0.1

<sup>1</sup> 2003 revised.

<sup>2</sup> Includes dry cows, excludes heifers not yet fresh.

<sup>3</sup> Excludes milk sucked by calves.

**July Milk Cows, 1994-2003  
20 States**



## Reliability Statement

**Survey Procedures:** Primary data used to determine these estimates were obtained from a sample of producers. Individual States maintain a list of all known milk producers and information on the size of their herd. States use all known sources of producers to ensure that their lists are as complete as possible. Generally, all large producers and a sample of small producers are included in the survey. Questionnaires are mailed to producers near the end of the month to obtain data for the first day of the month. Additional reports are obtained by telephone, as needed, to supplement the mail response. Where feasible, States utilize state and federal administrative data, rather than conduct a monthly or quarterly survey, to estimate milk production. This eliminates duplication of data gathering by different government agencies. Indications of milk cow inventory are also obtained in the January and July Cattle Surveys.

**Estimation Procedures:** State offices prepare these estimates by using a combination of survey indications, historic trends, and any available administrative data. Individual State estimates are reviewed by the Agricultural Statistics Board for reasonableness.

**Revision Policy:** Milk production, rate per cow, and number of cows are subject to revision the following month for monthly States or the following quarter for the quarterly States. Normally, Federal Market Order sales are the main basis for revisions. However, data for all orders are not available in time for this revision. Estimates are again subject to revisions in February each year based on additional administrative data. In the event that additional changes are necessary, a third revision is possible in February the following year. Estimates are again reviewed after data from the five-year Census of Agriculture are available. No revisions are made after that date.

**Reliability:** Since all operations with dairy animals are not included in the sample, survey estimates are subject to sampling variability. Survey results are also subject to non-sampling errors such as omissions, duplications, and mistakes in reporting, recording, and processing the data. The effects of these errors cannot be measured directly. They are minimized through rigid quality controls in the data collection process and through a careful review of all reported data for consistency and reasonableness.

To assist users in evaluating the reliability of the estimates in this report, the "Root Mean Square Error" is shown for selected items on the next page. The "Root Mean Square Error" is a statistical measure based on past performance and is computed using the differences between first and final estimates. The "Root Mean Square Error" for milk cow inventory estimates over the past 10 April-June quarters is 0.7 percent. This means that chances are 2 out of 3 that the final April-June estimate will not be above or below the current estimate of 9.12 million head by more than 0.7 percent. Chances are 9 out of 10 that the difference will not exceed 1.3 percent.

**Reliability of April-June Milk Estimates <sup>1</sup>**

Item	Root Mean Square Error	90% Confidence Level		Difference Between First and Latest Estimates			Quarters	
				Average	Smallest	Largest	First Above Latest	First Below Latest
				<i>Million Pounds</i>	<i>Million Pounds</i>	<i>Million Pounds</i>	<i>Number</i>	<i>Number</i>
Milk Production	<i>Percent</i>	<i>Percent</i>	<i>Million Pounds</i>	<i>Million Pounds</i>	<i>Million Pounds</i>	<i>Million Pounds</i>	<i>Number</i>	<i>Number</i>
	0.3	0.6	263	103	3	264	7	3
All Milk Cows	<i>Percent</i>	<i>Percent</i>	<i>1,000 Head</i>	<i>1,000 Head</i>	<i>1,000 Head</i>	<i>1,000 Head</i>	<i>Number</i>	<i>Number</i>
	0.7	1.3	119	40	1	145	6	4

<sup>1</sup> Based on records for the past 10 April-June quarters.

The next "*Milk Production*" report will be released at 3 p.m. ET on September 17, 2003.

The United States Department of Agriculture (USDA) prohibits discrimination in all its programs on the basis of race, color, national origin, gender, religion, age, disability, political beliefs, sexual orientation, and marital or family status. (Not all prohibited bases apply to all programs.) Persons with disabilities who require alternative means for communication of program information (braille, large print, audiotape, etc.) should contact the USDA's TARGET Center at 202-720-2600 (voice and TDD).

To file a complaint of discrimination, write USDA, Director, Office of Civil Rights, Room 326-W, Whitten Building, 1400 Independence Avenue, SW, Washington, D.C., 20250-9410, or call 202-720-5964 (voice or TDD). USDA is an equal opportunity provider and employer.

## **ACCESS TO REPORTS!!**

---

For your convenience, there are several ways to obtain NASS reports, data products, and services:

### **INTERNET ACCESS**

All NASS reports are available free of charge on the worldwide Internet. For access, connect to the Internet and go to the NASS Home Page at: <http://www.usda.gov/nass/>. Select "Today's Reports" or Publications and then Reports Calendar or Publications and then Search, by Title or Subject.

### **E-MAIL SUBSCRIPTION**

All NASS reports are available by subscription free of charge direct to your e-mail address. Starting with the NASS Home Page at <http://www.usda.gov/nass/>, click on **Publications**, then click on the **Subscribe by E-mail** button which takes you to the page describing e-mail delivery of reports. Finally, click on **Go to the Subscription Page** and follow the instructions.

### **AUTOFAX ACCESS**

NASSFax service is available for some reports from your fax machine. Please call 202-720-2000, using the handset attached to your fax. Respond to the voice prompts. Document 0411 is a list of available reports.

-----

### **PRINTED REPORTS OR DATA PRODUCTS**

**CALL OUR TOLL-FREE ORDER DESK: 800-999-6779 (U.S. and Canada)**  
**Other areas, please call 703-605-6220      FAX: 703-605-6900**  
**(Visa, MasterCard, check, or money order acceptable for payment.)**

-----

### **ASSISTANCE**

For **assistance** with general agricultural statistics or further information about NASS or its products or services, contact the **Agricultural Statistics Hotline** at **800-727-9540**, 7:30 a.m. to 4:00 p.m. ET, or e-mail: [nass@nass.usda.gov](mailto:nass@nass.usda.gov).

---