

# Milk Production

Released November 17, 2003, by the National Agricultural Statistics Service (NASS), Agricultural Statistics Board, U.S. Department of Agriculture. For information on "Milk Production" call Ty Kalas at 202-690-3236, office hours 7:30 a.m. to 4:00 p.m. ET.

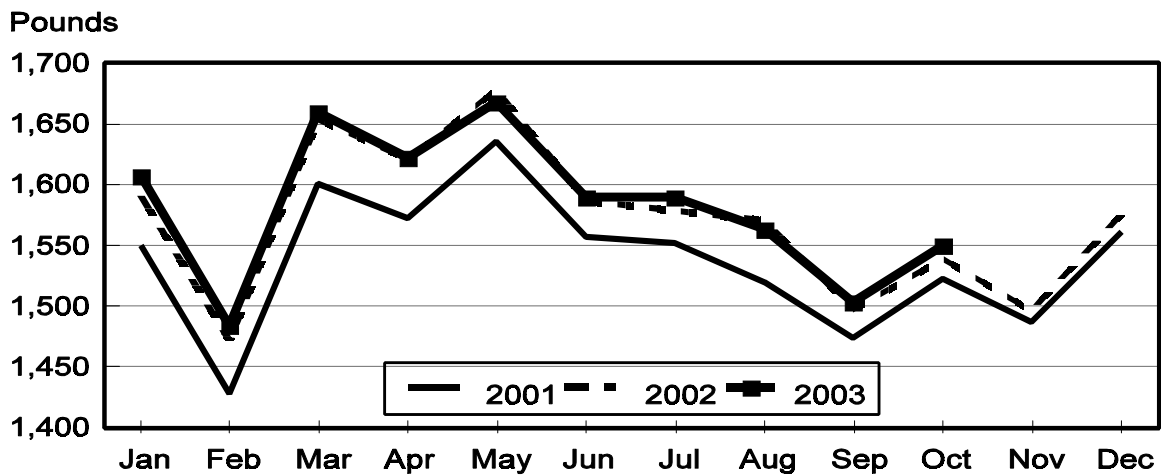
## October Milk Production Down 0.2 Percent

**Milk production** in the 20 major States during October totaled 12.0 billion pounds, down 0.2 percent from October 2002. September revised production, at 11.6 billion pounds, was down 5 million pounds from September 2002. The September revision represented an increase of 2 million pounds from last month's preliminary production estimate.

**Production per cow** in the 20 major States averaged 1,550 pounds for October, 11 pounds above October 2002.

**The number of milk cows** on farms in the 20 major States was 7.72 million head, 70,000 head less than October 2002, and 25,000 head less than September 2003.

## Monthly Milk per Cow 20 States



**Milk Cows and Production: By Quarter, United States, 2002-2003<sup>1</sup>**

Quarter	Milk Cows <sup>2</sup>		Milk Per Cow <sup>3</sup>		Milk Production <sup>3</sup>		
	2002	2003	2002	2003	2002	2003	Change From 2002
	<i>1,000 Head</i>	<i>1,000 Head</i>	<i>Pounds</i>	<i>Pounds</i>	<i>Million Pounds</i>	<i>Million Pounds</i>	<i>Percent</i>
Jan-Mar	9,112	9,154	4,653	4,691	42,397	42,939	1.3
Apr-Jun	9,149	9,114	4,811	4,814	44,015	43,872	-0.3
Jul-Sep	9,153	9,066	4,566	4,582	41,791	41,542	-0.6
Oct-Dec	9,148		4,543		41,555		
Annual	9,141		18,571		169,758		

<sup>1</sup> May not add due to rounding.

<sup>2</sup> Includes dry cows, excludes heifers not yet fresh.

<sup>3</sup> Excludes milk sucked by calves.

**Milk Cows and Production: By Month, 20 Selected States, 2002-2003<sup>1</sup>**

Month	Milk Cows <sup>2</sup>		Milk Per Cow <sup>3</sup>		Milk Production <sup>3</sup>		
	2002	2003	2002	2003	2002	2003	Change From 2002
	<i>1,000 Head</i>	<i>1,000 Head</i>	<i>Pounds</i>	<i>Pounds</i>	<i>Million Pounds</i>	<i>Million Pounds</i>	<i>Percent</i>
Jan	7,749	7,807	1,591	1,607	12,327	12,548	1.8
Feb	7,744	7,810	1,472	1,484	11,401	11,588	1.6
Mar	7,745	7,811	1,654	1,660	12,810	12,969	1.2
Apr	7,758	7,798	1,621	1,622	12,575	12,645	0.6
May	7,769	7,783	1,678	1,668	13,039	12,983	-0.4
Jun	7,782	7,775	1,587	1,590	12,348	12,366	0.1
Jul	7,781	7,765	1,578	1,590	12,281	12,345	0.5
Aug	7,785	7,750	1,570	1,563	12,223	12,110	-0.9
Sep	7,781	7,744	1,497	1,503	11,648	11,643	
Oct	7,789	7,719	1,539	1,550	11,991	11,965	-0.2
Nov	7,792		1,496		11,657		
Dec	7,801		1,575		12,290		
Annual	7,773		18,858		146,590		

<sup>1</sup> 2003 revised.

<sup>2</sup> Includes dry cows, excludes heifers not yet fresh.

<sup>3</sup> Excludes milk sucked by calves.

**Estimated Milk Cows and Production: By Month, United States, 2002-2003<sup>1</sup>**

Month	Milk Cows <sup>2</sup>		Milk Per Cow <sup>3</sup>		Milk Production <sup>3</sup>		
	2002	2003	2002	2003	2002	2003	Change From 2002
	<i>1,000 Head</i>	<i>1,000 Head</i>	<i>Pounds</i>	<i>Pounds</i>	<i>Million Pounds</i>	<i>Million Pounds</i>	<i>Percent</i>
Jan	9,117	9,153	1,569	1,587	14,304	14,521	1.5
Feb	9,109	9,155	1,452	1,465	13,229	13,409	1.4
Mar	9,110	9,155	1,632	1,639	14,864	15,009	1.0
Apr	9,132	9,133	1,597	1,599	14,580	14,602	0.2
May	9,149	9,109	1,652	1,646	15,118	14,991	-0.8
Jun	9,166	9,101	1,562	1,569	14,317	14,279	-0.3
Jul	9,158	9,080	1,550	1,564	14,196	14,205	0.1
Aug	9,157	9,063	1,543	1,538	14,128	13,938	-1.3
Sep	9,145	9,054	1,473	1,480	13,467	13,399	-0.5
Oct	9,147	9,022	1,516	1,528	13,866	13,783	-0.6
Nov	9,146		1,474		13,478		
Dec	9,150		1,553		14,211		
Annual	9,141		18,571		169,758		

<sup>1</sup> 2003 revised.

<sup>2</sup> Includes dry cows, excludes heifers not yet fresh.

<sup>3</sup> Excludes milk sucked by calves.

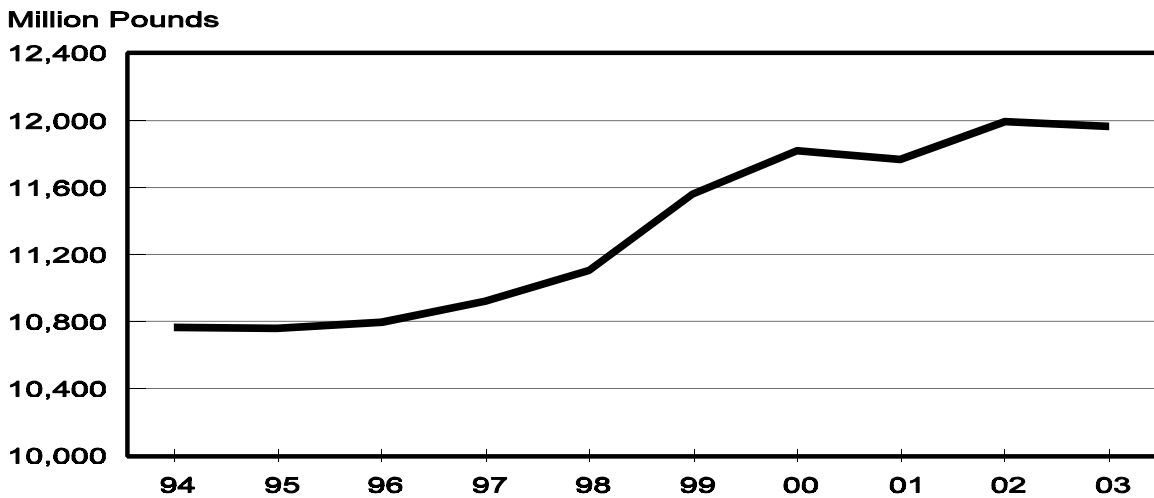
**Milk Cows and Production: By State, October 2002-2003**

State	Milk Cows <sup>1</sup>		Milk Per Cow <sup>2</sup>		Milk Production <sup>2</sup>		
	2002	2003	2002	2003	2002	2003	Change From 2002
	<i>1,000 Head</i>	<i>1,000 Head</i>	<i>Pounds</i>	<i>Pounds</i>	<i>Million Pounds</i>	<i>Million Pounds</i>	<i>Percent</i>
AZ	150	150	1,750	1,790	263	269	2.3
CA	1,664	1,702	1,760	1,710	2,929	2,910	-0.6
FL	147	140	1,110	1,080	163	151	-7.4
ID	391	413	1,760	1,820	688	752	9.3
IL	115	108	1,430	1,450	164	157	-4.3
IN	147	144	1,435	1,490	211	215	1.9
IA	208	198	1,480	1,520	308	301	-2.3
KY	120	110	1,025	1,025	123	113	-8.1
MI	300	297	1,650	1,690	495	502	1.4
MN	480	465	1,390	1,425	667	663	-0.6
MO	136	126	1,120	1,200	152	151	-0.7
NM	305	318	1,750	1,745	534	555	3.9
NY	676	665	1,485	1,455	1,004	968	-3.6
OH	262	259	1,410	1,420	369	368	-0.3
PA	591	562	1,495	1,455	884	818	-7.5
TX	310	311	1,350	1,450	419	451	7.6
VT	153	147	1,425	1,450	218	213	-2.3
VA	119	110	1,260	1,225	150	135	-10.0
WA	247	244	1,870	1,885	462	460	-0.4
WI	1,268	1,250	1,410	1,450	1,788	1,813	1.4
20-State Total	7,789	7,719	1,539	1,550	11,991	11,965	-0.2

<sup>1</sup> Includes dry cows, excludes heifers not yet fresh.

<sup>2</sup> Excludes milk sucked by calves.

**October Milk Production, 1994-2003  
20 States**



**Milk Cows and Production: By State, September 2002-2003<sup>1</sup>**

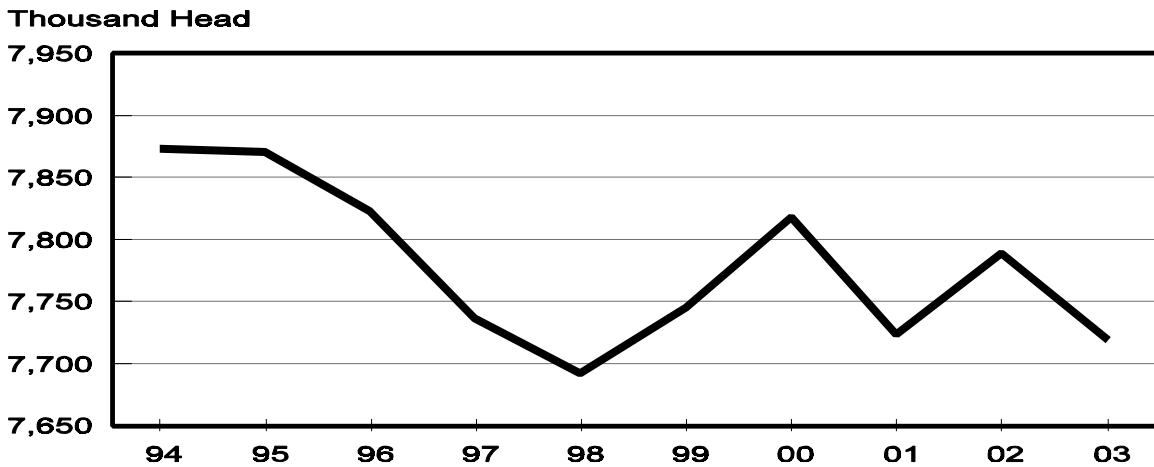
State	Milk Cows <sup>2</sup>		Milk per Cow <sup>3</sup>		Milk Production <sup>3</sup>		
	2002	2003	2002	2003	2002	2003	Change From 2002
	<i>1,000 Head</i>	<i>1,000 Head</i>	<i>Pounds</i>	<i>Pounds</i>	<i>Million Pounds</i>	<i>Million Pounds</i>	<i>Percent</i>
AZ	150	150	1,660	1,660	249	249	
CA	1,658	1,702	1,700	1,655	2,819	2,817	-0.1
FL	148	139	1,050	1,020	155	142	-8.4
ID	392	413	1,730	1,780	678	735	8.4
IL	115	108	1,365	1,400	157	151	-3.8
IN	147	144	1,375	1,425	202	205	1.5
IA	209	199	1,425	1,470	298	293	-1.7
KY	120	111	990	975	119	108	-9.2
MI	300	298	1,605	1,640	482	489	1.5
MN	480	470	1,340	1,360	643	639	-0.6
MO	136	127	1,050	1,115	143	142	-0.7
NM	305	318	1,700	1,705	519	542	4.4
NY	675	673	1,455	1,420	982	956	-2.6
OH	262	259	1,360	1,380	356	357	0.3
PA	587	566	1,460	1,415	857	801	-6.5
TX	310	312	1,255	1,340	389	418	7.5
VT	153	147	1,400	1,430	214	210	-1.9
VA	119	111	1,225	1,175	146	130	-11.0
WA	247	244	1,855	1,865	458	455	-0.7
WI	1,268	1,253	1,405	1,440	1,782	1,804	1.2
20-State Total	7,781	7,744	1,497	1,503	11,648	11,643	

<sup>1</sup> 2003 revised.

<sup>2</sup> Includes dry cows, excludes heifers not yet fresh.

<sup>3</sup> Excludes milk sucked by calves.

**October Milk Cows, 1994-2003  
20 States**



## Reliability Statement

**Survey Procedures:** Primary data used to determine these estimates were obtained from a sample of producers. Individual States maintain a list of all known milk producers and information on the size of their herd. States use all known sources of producers to ensure that their lists are as complete as possible. Generally, all large producers and a sample of small producers are included in the survey. Questionnaires are mailed to producers near the end of the month to obtain data for the first day of the month. Additional reports are obtained by telephone, as needed, to supplement the mail response. Where feasible, States utilize state and federal administrative data, rather than conduct a monthly or quarterly survey, to estimate milk production. This eliminates duplication of data gathering by different government agencies. Indications of milk cow inventory are also obtained in the January and July Cattle Surveys.

**Estimation Procedures:** State offices prepare these estimates by using a combination of survey indications, historic trends, and any available administrative data. Individual State estimates are reviewed by the Agricultural Statistics Board for reasonableness.

**Revision Policy:** Milk production, rate per cow, and number of cows are subject to revision the following month for monthly States or the following quarter for the quarterly States. Normally, Federal Market Order sales are the main basis for revisions. However, data for all orders are not available in time for this revision. Estimates are again subject to revisions in February each year based on additional administrative data. In the event that additional changes are necessary, a third revision is possible in February the following year. Estimates are again reviewed after data from the five-year Census of Agriculture are available. No revisions are made after that date.

**Reliability:** Since all operations with dairy animals are not included in the sample, survey estimates are subject to sampling variability. Survey results are also subject to non-sampling errors such as omissions, duplications, and mistakes in reporting, recording, and processing the data. The effects of these errors cannot be measured directly. They are minimized through rigid quality controls in the data collection process and through a careful review of all reported data for consistency and reasonableness.

To assist users in evaluating the reliability of the estimates in this report, the "Root Mean Square Error" is shown for selected items on the next page. The "Root Mean Square Error" is a statistical measure based on past performance and is computed using the differences between first and final estimates. The "Root Mean Square Error" for milk cow inventory estimates over the past 10 July-September quarters is 0.7 percent. This means that chances are 2 out of 3 that the final July-September estimate will not be above or below the current estimate of 9.07 million head by more than 0.7 percent. Chances are 9 out of 10 that the difference will not exceed 1.4 percent.

**Reliability of July-September Milk Estimates <sup>1</sup>**

Item	Root Mean Square Error	90% Confidence Level		Difference Between First and Latest Estimates			Quarters	
				Average	Smallest	Largest	First Above Latest	First Below Latest
				<i>Million Pounds</i>	<i>Million Pounds</i>	<i>Million Pounds</i>	<i>Number</i>	<i>Number</i>
Milk Production	<i>Percent</i>	<i>Percent</i>	<i>Million Pounds</i>	<i>Million Pounds</i>	<i>Million Pounds</i>	<i>Million Pounds</i>	<i>Number</i>	<i>Number</i>
	0.6	1.1	457	206	34	362	10	0
All Milk Cows	<i>Percent</i>	<i>Percent</i>	<i>1,000 Head</i>	<i>1,000 Head</i>	<i>1,000 Head</i>	<i>1,000 Head</i>	<i>Number</i>	<i>Number</i>
	0.7	1.4	127	47	5	148	8	2

<sup>1</sup> Based on records for the past 10 July-September quarters.

The next "*Milk Production*" report will be released at 3 p.m. ET on December 17, 2003.

The United States Department of Agriculture (USDA) prohibits discrimination in all its programs on the basis of race, color, national origin, gender, religion, age, disability, political beliefs, sexual orientation, and marital or family status. (Not all prohibited bases apply to all programs.) Persons with disabilities who require alternative means for communication of program information (braille, large print, audiotape, etc.) should contact the USDA's TARGET Center at 202-720-2600 (voice and TDD).

To file a complaint of discrimination, write USDA, Director, Office of Civil Rights, Room 326-W, Whitten Building, 1400 Independence Avenue, SW, Washington, D.C., 20250-9410, or call 202-720-5964 (voice or TDD). USDA is an equal opportunity provider and employer.

## ACCESS TO REPORTS!!

---

For your convenience, there are several ways to obtain NASS reports, data products, and services:

### INTERNET ACCESS

All NASS reports are available free of charge on the worldwide Internet. For access, connect to the Internet and go to the NASS Home Page at: <http://www.usda.gov/nass/>. Select "Today's Reports" or Publications and then Reports Calendar or Publications and then Search, by Title or Subject.

### E-MAIL SUBSCRIPTION

All NASS reports are available by subscription free of charge direct to your e-mail address. Starting with the NASS Home Page at <http://www.usda.gov/nass/>, click on **Publications**, then click on the **Subscribe by E-mail** button which takes you to the page describing e-mail delivery of reports. Finally, click on **Go to the Subscription Page** and follow the instructions.

-----

### PRINTED REPORTS OR DATA PRODUCTS

**CALL OUR TOLL-FREE ORDER DESK: 800-999-6779 (U.S. and Canada)**  
**Other areas, please call 703-605-6220      FAX: 703-605-6900**  
**(Visa, MasterCard, check, or money order acceptable for payment.)**

-----

### ASSISTANCE

For **assistance** with general agricultural statistics or further information about NASS or its products or services, contact the **Agricultural Statistics Hotline** at **800-727-9540**, 7:30 a.m. to 4:00 p.m. ET, or e-mail: [nass@nass.usda.gov](mailto:nass@nass.usda.gov).

---