

Milk Production

Released December 17, 2003, by the National Agricultural Statistics Service (NASS), Agricultural Statistics Board, U.S. Department of Agriculture. For information on "Milk Production" call Ty Kalas at 202-690-3236, office hours 7:30 a.m. to 4:00 p.m. ET.

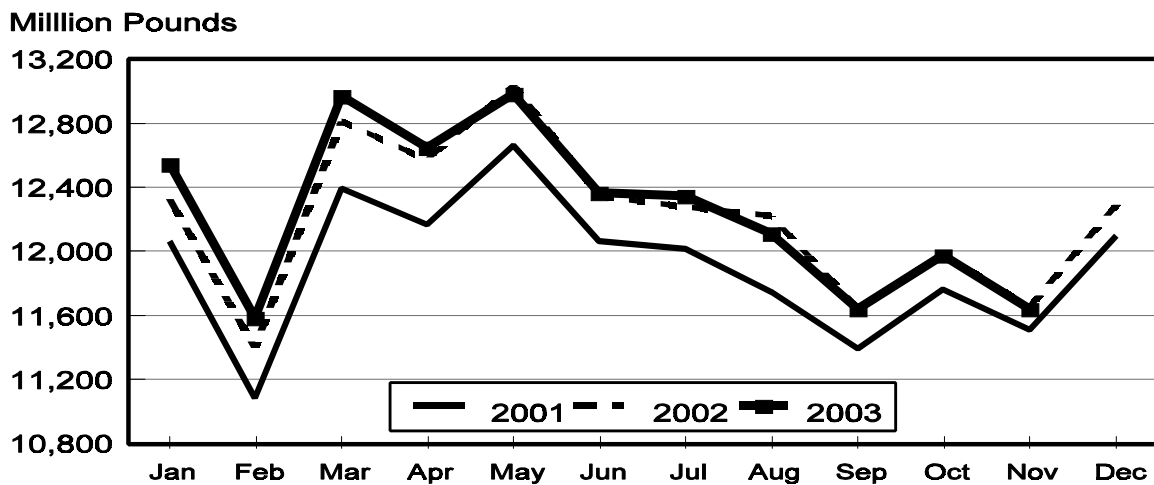
November Milk Production Down 0.2 Percent

Milk production in the 20 major States during November totaled 11.6 billion pounds, down 0.2 percent from November 2002. October revised production, at 12.0 billion pounds, was down 0.1 percent from October 2002. The October revision represented an increase of 0.1 percent or 13 million pounds from last month's preliminary production estimate.

Production per cow in the 20 major States averaged 1,509 pounds for November, 13 pounds above November 2002.

The number of milk cows on farms in the 20 major States was 7.71 million head, 82,000 head less than November 2002, and 10,000 head less than October 2003.

Monthly Milk Production 20 States



Milk Cows and Production: By Quarter, United States, 2002-2003¹

Quarter	Milk Cows ²		Milk Per Cow ³		Milk Production ³		
	2002	2003	2002	2003	2002	2003	Change From 2002
	<i>1,000 Head</i>	<i>1,000 Head</i>	<i>Pounds</i>	<i>Pounds</i>	<i>Million Pounds</i>	<i>Million Pounds</i>	<i>Percent</i>
Jan-Mar	9,112	9,154	4,653	4,691	42,397	42,939	1.3
Apr-Jun	9,149	9,114	4,811	4,814	44,015	43,872	-0.3
Jul-Sep	9,153	9,066	4,566	4,582	41,791	41,542	-0.6
Oct-Dec	9,148		4,543		41,555		
Annual	9,141		18,571		169,758		

¹ May not add due to rounding.

² Includes dry cows, excludes heifers not yet fresh.

³ Excludes milk sucked by calves.

Milk Cows and Production: By Month, 20 Selected States, 2002-2003¹

Month	Milk Cows ²		Milk Per Cow ³		Milk Production ³		
	2002	2003	2002	2003	2002	2003	Change From 2002
	<i>1,000 Head</i>	<i>1,000 Head</i>	<i>Pounds</i>	<i>Pounds</i>	<i>Million Pounds</i>	<i>Million Pounds</i>	<i>Percent</i>
Jan	7,749	7,807	1,591	1,607	12,327	12,548	1.8
Feb	7,744	7,810	1,472	1,484	11,401	11,588	1.6
Mar	7,745	7,811	1,654	1,660	12,810	12,969	1.2
Apr	7,758	7,798	1,621	1,622	12,575	12,645	0.6
May	7,769	7,783	1,678	1,668	13,039	12,983	-0.4
Jun	7,782	7,775	1,587	1,590	12,348	12,366	0.1
Jul	7,781	7,765	1,578	1,590	12,281	12,345	0.5
Aug	7,785	7,750	1,570	1,563	12,223	12,110	-0.9
Sep	7,781	7,744	1,497	1,503	11,648	11,643	
Oct	7,789	7,720	1,539	1,552	11,991	11,978	-0.1
Nov	7,792	7,710	1,496	1,509	11,657	11,637	-0.2
Dec	7,801		1,575		12,290		
Annual	7,773		18,858		146,590		

¹ 2003 revised.

² Includes dry cows, excludes heifers not yet fresh.

³ Excludes milk sucked by calves.

Estimated Milk Cows and Production: By Month, United States, 2002-2003¹

Month	Milk Cows ²		Milk Per Cow ³		Milk Production ³		
	2002	2003	2002	2003	2002	2003	Change From 2002
	<i>1,000 Head</i>	<i>1,000 Head</i>	<i>Pounds</i>	<i>Pounds</i>	<i>Million Pounds</i>	<i>Million Pounds</i>	<i>Percent</i>
Jan	9,117	9,153	1,569	1,587	14,304	14,521	1.5
Feb	9,109	9,155	1,452	1,465	13,229	13,409	1.4
Mar	9,110	9,155	1,632	1,639	14,864	15,009	1.0
Apr	9,132	9,133	1,597	1,599	14,580	14,602	0.2
May	9,149	9,109	1,652	1,646	15,118	14,991	-0.8
Jun	9,166	9,101	1,562	1,569	14,317	14,279	-0.3
Jul	9,158	9,080	1,550	1,564	14,196	14,205	0.1
Aug	9,157	9,063	1,543	1,538	14,128	13,938	-1.3
Sep	9,145	9,054	1,473	1,480	13,467	13,399	-0.5
Oct	9,147	9,022	1,516	1,529	13,866	13,791	-0.5
Nov	9,146	9,007	1,474	1,488	13,478	13,398	-0.6
Dec	9,150		1,553		14,211		
Annual	9,141		18,571		169,758		

¹ 2003 revised.

² Includes dry cows, excludes heifers not yet fresh.

³ Excludes milk sucked by calves.

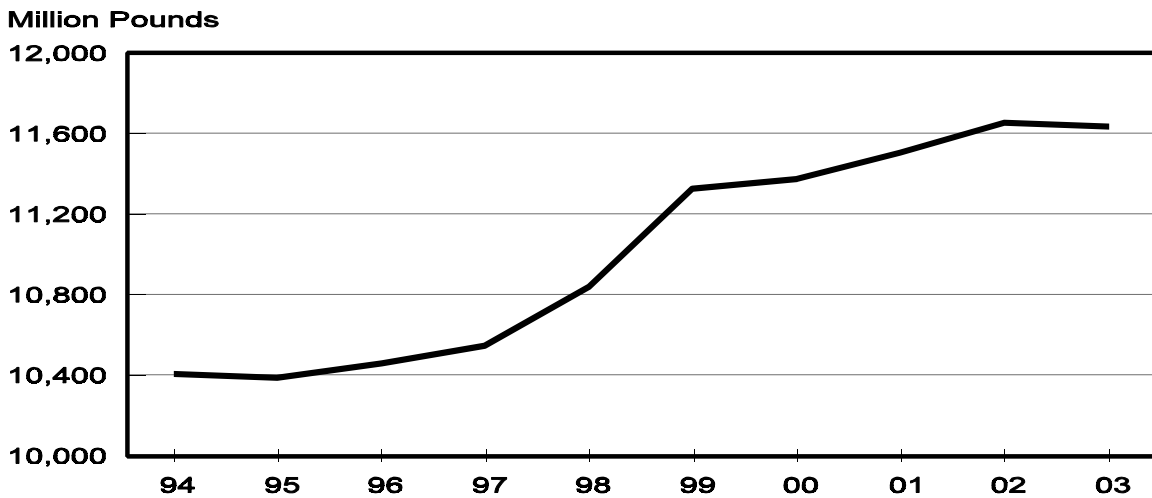
Milk Cows and Production: By State, November 2002-2003

State	Milk Cows ¹		Milk Per Cow ²		Milk Production ²		
	2002	2003	2002	2003	2002	2003	Change From 2002
	<i>1,000 Head</i>	<i>1,000 Head</i>	<i>Pounds</i>	<i>Pounds</i>	<i>Million Pounds</i>	<i>Million Pounds</i>	<i>Percent</i>
AZ	150	150	1,800	1,835	270	275	1.9
CA	1,669	1,706	1,685	1,655	2,812	2,823	0.4
FL	147	140	1,155	1,130	170	158	-7.1
ID	390	412	1,690	1,740	659	717	8.8
IL	115	108	1,420	1,450	163	157	-3.7
IN	147	143	1,420	1,460	209	209	
IA	208	197	1,470	1,490	306	294	-3.9
KY	120	111	1,020	1,025	122	114	-6.6
MI	301	298	1,610	1,635	485	487	0.4
MN	480	465	1,380	1,400	662	651	-1.7
MO	135	125	1,125	1,190	152	149	-2.0
NM	305	320	1,650	1,670	503	534	6.2
NY	678	658	1,410	1,405	956	924	-3.3
OH	261	258	1,350	1,380	352	356	1.1
PA	591	560	1,460	1,420	863	795	-7.9
TX	310	311	1,345	1,460	417	454	8.9
VT	153	146	1,380	1,415	211	207	-1.9
VA	119	109	1,235	1,225	147	134	-8.8
WA	247	244	1,800	1,795	445	438	-1.6
WI	1,266	1,249	1,385	1,410	1,753	1,761	0.5
20-State Total	7,792	7,710	1,496	1,509	11,657	11,637	-0.2

¹ Includes dry cows, excludes heifers not yet fresh.

² Excludes milk sucked by calves.

**November Milk Production, 1994-2003
20 States**



Milk Cows and Production: By State, October 2002-2003 ¹

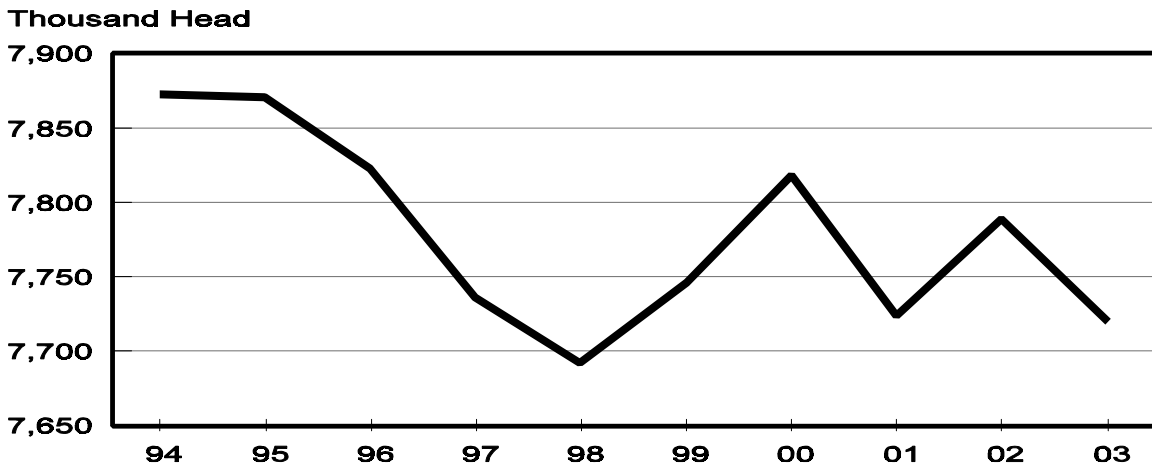
State	Milk Cows ²		Milk per Cow ³		Milk Production ³		
	2002	2003	2002	2003	2002	2003	Change From 2002
	<i>1,000 Head</i>	<i>1,000 Head</i>	<i>Pounds</i>	<i>Pounds</i>	<i>Million Pounds</i>	<i>Million Pounds</i>	<i>Percent</i>
AZ	150	150	1,750	1,790	263	269	2.3
CA	1,664	1,703	1,760	1,705	2,929	2,904	-0.9
FL	147	140	1,110	1,105	163	155	-4.9
ID	391	412	1,760	1,820	688	750	9.0
IL	115	108	1,430	1,470	164	159	-3.0
IN	147	144	1,435	1,490	211	215	1.9
IA	208	198	1,480	1,520	308	301	-2.3
KY	120	111	1,025	1,035	123	115	-6.5
MI	300	297	1,650	1,690	495	502	1.4
MN	480	465	1,390	1,410	667	656	-1.6
MO	136	126	1,120	1,200	152	151	-0.7
NM	305	318	1,750	1,745	534	555	3.9
NY	676	665	1,485	1,455	1,004	968	-3.6
OH	262	259	1,410	1,420	369	368	-0.3
PA	591	562	1,495	1,455	884	818	-7.5
TX	310	311	1,350	1,450	419	451	7.6
VT	153	147	1,425	1,450	218	213	-2.3
VA	119	110	1,260	1,235	150	136	-9.3
WA	247	244	1,870	1,890	462	461	-0.2
WI	1,268	1,250	1,410	1,465	1,788	1,831	2.4
20-State Total	7,789	7,720	1,539	1,552	11,991	11,978	-0.1

¹ 2003 revised.

² Includes dry cows, excludes heifers not yet fresh.

³ Excludes milk sucked by calves.

**November Milk Cows, 1994-2003
20 States**



Reliability Statement

Survey Procedures: Primary data used to determine these estimates were obtained from a sample of producers. Individual States maintain a list of all known milk producers and information on the size of their herd. States use all known sources of producers to ensure that their lists are as complete as possible. Generally, all large producers and a sample of small producers are included in the survey. Questionnaires are mailed to producers near the end of the month to obtain data for the first day of the month. Additional reports are obtained by telephone, as needed, to supplement the mail response. Where feasible, States utilize state and federal administrative data, rather than conduct a monthly or quarterly survey, to estimate milk production. This eliminates duplication of data gathering by different government agencies. Indications of milk cow inventory are also obtained in the January and July Cattle Surveys.

Estimation Procedures: State offices prepare these estimates by using a combination of survey indications, historic trends, and any available administrative data. Individual State estimates are reviewed by the Agricultural Statistics Board for reasonableness.

Revision Policy: Milk production, rate per cow, and number of cows are subject to revision the following month for monthly States or the following quarter for the quarterly States. Normally, Federal Market Order sales are the main basis for revisions. However, data for all orders are not available in time for this revision. Estimates are again subject to revisions in February each year based on additional administrative data. In the event that additional changes are necessary, a third revision is possible in February the following year. Estimates are again reviewed after data from the five-year Census of Agriculture are available. No revisions are made after that date.

Reliability: Since all operations with dairy animals are not included in the sample, survey estimates are subject to sampling variability. Survey results are also subject to non-sampling errors such as omissions, duplications, and mistakes in reporting, recording, and processing the data. The effects of these errors cannot be measured directly. They are minimized through rigid quality controls in the data collection process and through a careful review of all reported data for consistency and reasonableness.

To assist users in evaluating the reliability of the estimates in this report, the "Root Mean Square Error" is shown for selected items on the next page. The "Root Mean Square Error" is a statistical measure based on past performance and is computed using the differences between first and final estimates. The "Root Mean Square Error" for milk cow inventory estimates over the past 10 July-September quarters is 0.7 percent. This means that chances are 2 out of 3 that the final July-September estimate will not be above or below the current estimate of 9.07 million head by more than 0.7 percent. Chances are 9 out of 10 that the difference will not exceed 1.4 percent.

Reliability of July-September Milk Estimates ¹

Item	Root Mean Square Error	90% Confidence Level		Difference Between First and Latest Estimates			Quarters	
				Average	Smallest	Largest	First Above Latest	First Below Latest
				<i>Million Pounds</i>	<i>Million Pounds</i>	<i>Million Pounds</i>	<i>Number</i>	<i>Number</i>
Milk Production	<i>Percent</i> 0.6	<i>Percent</i> 1.1	<i>Million Pounds</i> 457	<i>Million Pounds</i> 206	<i>Million Pounds</i> 34	<i>Million Pounds</i> 362	<i>Number</i> 10	<i>Number</i> 0
All Milk Cows	<i>Percent</i> 0.7	<i>Percent</i> 1.4	<i>1,000 Head</i> 127	<i>1,000 Head</i> 47	<i>1,000 Head</i> 5	<i>1,000 Head</i> 148	<i>Number</i> 8	<i>Number</i> 2

¹ Based on records for the past 10 July-September quarters.

The next "*Milk Production*" report will be released at 3 p.m. ET on January 16, 2004.

The United States Department of Agriculture (USDA) prohibits discrimination in all its programs on the basis of race, color, national origin, gender, religion, age, disability, political beliefs, sexual orientation, and marital or family status. (Not all prohibited bases apply to all programs.) Persons with disabilities who require alternative means for communication of program information (braille, large print, audiotape, etc.) should contact the USDA's TARGET Center at 202-720-2600 (voice and TDD).

To file a complaint of discrimination, write USDA, Director, Office of Civil Rights, Room 326-W, Whitten Building, 1400 Independence Avenue, SW, Washington, D.C., 20250-9410, or call 202-720-5964 (voice or TDD). USDA is an equal opportunity provider and employer.

ACCESS TO REPORTS!!

For your convenience, there are several ways to obtain NASS reports, data products, and services:

INTERNET ACCESS

All NASS reports are available free of charge on the worldwide Internet. For access, connect to the Internet and go to the NASS Home Page at: <http://www.usda.gov/nass/>. Select "Today's Reports" or Publications and then Reports Calendar or Publications and then Search, by Title or Subject.

E-MAIL SUBSCRIPTION

All NASS reports are available by subscription free of charge direct to your e-mail address. Starting with the NASS Home Page at <http://www.usda.gov/nass/>, click on **Publications**, then click on the **Subscribe by E-mail** button which takes you to the page describing e-mail delivery of reports. Finally, click on **Go to the Subscription Page** and follow the instructions.

PRINTED REPORTS OR DATA PRODUCTS

CALL OUR TOLL-FREE ORDER DESK: 800-999-6779 (U.S. and Canada)
Other areas, please call 703-605-6220 FAX: 703-605-6900
(Visa, MasterCard, check, or money order acceptable for payment.)

ASSISTANCE

For **assistance** with general agricultural statistics or further information about NASS or its products or services, contact the **Agricultural Statistics Hotline** at **800-727-9540**, 7:30 a.m. to 4:00 p.m. ET, or e-mail: nass@nass.usda.gov.
