

Milk Production

Released March 16, 2004, by the National Agricultural Statistics Service (NASS), Agricultural Statistics Board, U.S. Department of Agriculture. For information on "Milk Production" call Ty Kalas at 202-690-3236, office hours 7:30 a.m. to 4:00 p.m. ET.

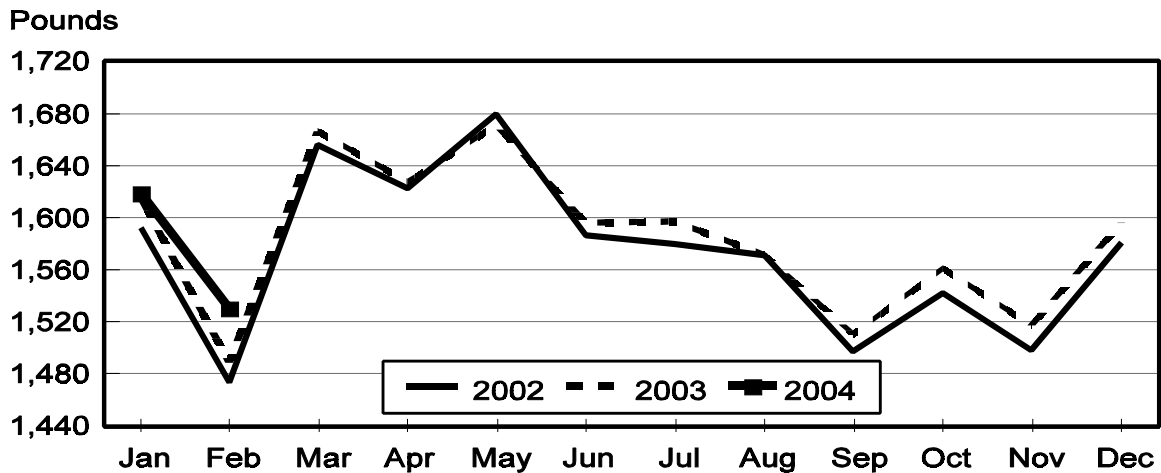
February Milk Production Up 1.7 Percent

Milk production in the 20 major States during February totaled 11.8 billion pounds, up 1.7 percent from February 2003. However, adjusting production for the additional day due to the leap year causes February milk production to be down 1.8 percent on a per day basis. January revised production, at 12.5 billion pounds, was down 1.0 percent from January 2003. The January revision represented a decrease of 11 million pounds from last month's preliminary production estimate.

Production per cow in the 20 major States averaged 1,531 pounds for February, 42 pounds above February 2003.

The number of milk cows on farms in the 20 major States was 7.72 million head, 91,000 head less than February 2003, but 4,000 head more than January 2004.

Monthly Milk per Cow 20 States



Milk Cows and Production: By Quarter, United States, 2003-2004¹

Quarter	Milk Cows ²		Milk Per Cow ³		Milk Production ³		
	2003	2004	2003	2004	2003	2004	Change From 2003
	<i>1,000 Head</i>	<i>1,000 Head</i>	<i>Pounds</i>	<i>Pounds</i>	<i>Million Pounds</i>	<i>Million Pounds</i>	<i>Percent</i>
Jan-Mar	9,144		4,710		43,069		
Apr-Jun	9,109		4,827		43,965		
Jul-Sep	9,073		4,601		41,746		
Oct-Dec	9,011		4,609		41,532		
Annual	9,084		18,749		170,312		

¹ May not add due to rounding.

² Includes dry cows, excludes heifers not yet fresh.

³ Excludes milk sucked by calves.

Milk Cows and Production: By Month, 20 Selected States, 2003-2004¹

	Milk Cows ²		Milk Per Cow ³		Milk Production ³		
	2003	2004	2003	2004	2003	2004	Change From 2003
	<i>1,000 Head</i>	<i>1,000 Head</i>	<i>Pounds</i>	<i>Pounds</i>	<i>Million Pounds</i>	<i>Million Pounds</i>	<i>Percent</i>
Jan	7,810	7,716	1,615	1,619	12,616	12,491	-1.0
Feb	7,811	7,720	1,489	1,531	11,628	11,822	1.7
Mar	7,810		1,666		13,014		
Apr	7,800		1,627		12,693		
May	7,787		1,671		13,013		
Jun	7,785		1,596		12,428		
Jul	7,780		1,597		12,421		
Aug	7,771		1,571		12,207		
Sep	7,764		1,511		11,731		
Oct	7,743		1,561		12,083		
Nov	7,721		1,517		11,709		
Dec	7,713		1,596		12,313		
Annual	7,775		19,017		147,856		

¹ 2004 revised.

² Includes dry cows, excludes heifers not yet fresh.

³ Excludes milk sucked by calves.

Estimated Milk Cows and Production: By Month, United States, 2003- 2004¹

Month	Milk Cows ²		Milk Per Cow ³		Milk Production ³		
	2003	2004	2003	2004	2003	2004	Change From 2003
	<i>1,000 Head</i>	<i>1,000 Head</i>	<i>Pounds</i>	<i>Pounds</i>	<i>Million Pounds</i>	<i>Million Pounds</i>	<i>Percent</i>
Jan	9,147	8,994	1,594	1,599	14,584	14,383	-1.4
Feb	9,145	8,994	1,470	1,513	13,441	13,610	1.3
Mar	9,141		1,646		15,044		
Apr	9,125		1,604		14,634		
May	9,104		1,648		15,003		
Jun	9,097		1,575		14,328		
Jul	9,087		1,570		14,263		
Aug	9,072		1,545		14,015		
Sep	9,061		1,486		13,468		
Oct	9,034		1,538		13,898		
Nov	9,005		1,496		13,470		
Dec	8,994		1,575		14,164		
Annual	9,084		18,749		170,312		

¹ Includes dry cows, excludes heifers not yet fresh.

² Excludes milk sucked by calves.

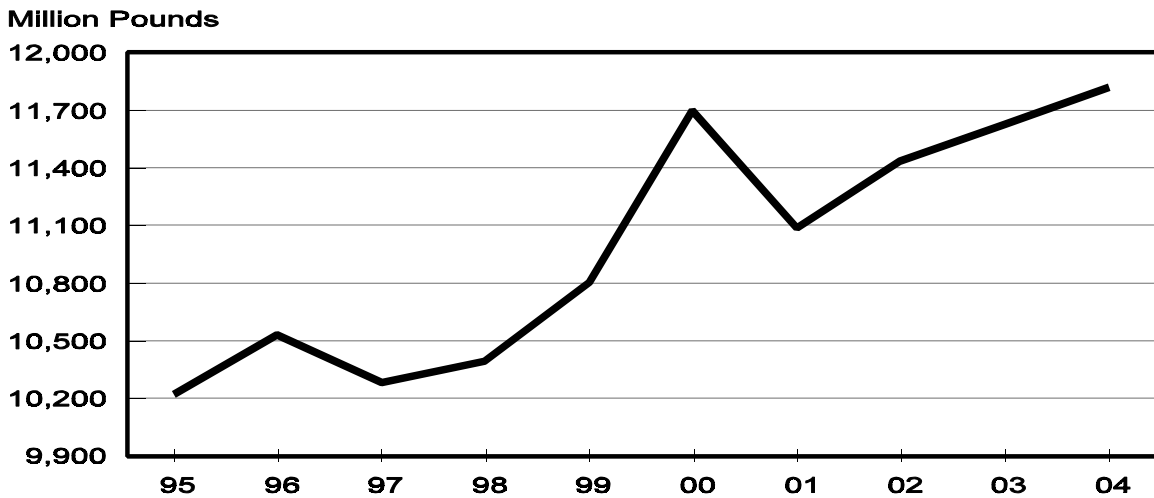
Milk Cows and Production: By State, February 2003-2004

State	Milk Cows ²		Milk Per Cow ³		Milk Production ³		
	2003	2004	2003	2004	2003	2004	Change From 2003
	<i>1,000 Head</i>	<i>1,000 Head</i>	<i>Pounds</i>	<i>Pounds</i>	<i>Million Pounds</i>	<i>Million Pounds</i>	<i>Percent</i>
AZ	155	155	1,850	1,880	287	291	1.4
CA	1,676	1,705	1,655	1,680	2,774	2,864	3.2
FL	146	139	1,290	1,375	188	191	1.6
ID	394	412	1,650	1,700	650	700	7.7
IL	114	108	1,485	1,520	169	164	-3.0
IN	147	145	1,525	1,590	224	231	3.1
IA	204	194	1,480	1,510	302	293	-3.0
KY	120	112	1,000	1,025	120	115	-4.2
MI	302	299	1,590	1,670	480	499	4.0
MN	480	465	1,385	1,425	665	663	-0.3
MO	133	124	1,150	1,185	153	147	-3.9
NM	314	326	1,605	1,660	504	541	7.3
NY	677	660	1,400	1,400	948	924	-2.5
OH	260	259	1,360	1,370	354	355	0.3
PA	588	564	1,430	1,425	841	804	-4.4
TX	320	317	1,410	1,585	451	502	11.3
VT	152	146	1,370	1,425	208	208	
VA	116	105	1,235	1,310	143	138	-3.5
WA	248	240	1,750	1,790	434	430	-0.9
WI	1,265	1,245	1,370	1,415	1,733	1,762	1.7
20-State Total	7,811	7,720	1,489	1,531	11,628	11,822	1.7

¹ Includes dry cows, excludes heifers not yet fresh.

² Excludes milk sucked by calves.

**February Milk Production, 1995-2004
20 States**



Milk Cows and Production: By State, January 2003-2004 ¹

State	Milk Cows ²		Milk per Cow ³		Milk Production ³		
	2003	2004	2003	2004	2003	2004	Change From 2003
	<i>1,000 Head</i>	<i>1,000 Head</i>	<i>Pounds</i>	<i>Pounds</i>	<i>Million Pounds</i>	<i>Million Pounds</i>	<i>Percent</i>
AZ	155	155	1,970	2,010	305	312	2.3
CA	1,672	1,701	1,790	1,755	2,993	2,985	-0.3
FL	147	140	1,360	1,435	200	201	0.5
ID	392	412	1,800	1,800	706	742	5.1
IL	114	108	1,580	1,610	180	174	-3.3
IN	146	145	1,710	1,715	250	249	-0.4
IA	207	196	1,595	1,600	330	314	-4.8
KY	120	112	1,115	1,090	134	122	-9.0
MI	302	300	1,765	1,780	533	534	0.2
MN	480	465	1,520	1,505	730	700	-4.1
MO	134	125	1,240	1,265	166	158	-4.8
NM	314	325	1,720	1,760	540	572	5.9
NY	675	658	1,515	1,490	1,023	980	-4.2
OH	260	258	1,445	1,450	376	374	-0.5
PA	590	563	1,540	1,500	909	845	-7.0
TX	320	317	1,505	1,660	482	526	9.1
VT	153	146	1,495	1,515	229	221	-3.5
VA	116	105	1,365	1,390	158	146	-7.6
WA	248	240	1,910	1,900	474	456	-3.8
WI	1,265	1,245	1,500	1,510	1,898	1,880	-0.9
20-State Total	7,810	7,716	1,615	1,619	12,616	12,491	-1.0

¹ 2004 revised.

² Includes dry cows, excludes heifers not yet fresh.

³ Excludes milk sucked by calves.

**February Milk Cows, 1995-2004
20 States**



Reliability Statement

Survey Procedures: Primary data used to determine these estimates were obtained from a sample of producers. Individual States maintain a list of all known milk producers and information on the size of their herd. States use all known sources of producers to ensure that their lists are as complete as possible. Generally, all large producers and a sample of small producers are included in the survey. Questionnaires are mailed to producers near the end of the month to obtain data for the first day of the month. Additional reports are obtained by telephone, as needed, to supplement the mail response. Where feasible, States utilize state and federal administrative data, rather than conduct a monthly or quarterly survey, to estimate milk production. This eliminates duplication of data gathering by different government agencies. Indications of milk cow inventory are also obtained in the January and July Cattle Surveys.

Estimation Procedures: State offices prepare these estimates by using a combination of survey indications, historic trends, and any available administrative data. Individual State estimates are reviewed by the Agricultural Statistics Board for reasonableness.

Revision Policy: Milk production, rate per cow, and number of cows are subject to revision the following month for monthly States or the following quarter for the quarterly States. Normally, Federal Market Order sales are the main basis for revisions. However, data for all orders are not available in time for this revision. Estimates are again subject to revisions in February each year based on additional administrative data. In the event that additional changes are necessary, a third revision is possible in February the following year. Estimates are again reviewed after data from the five-year Census of Agriculture are available. No revisions are made after that date.

Reliability: Since all operations with dairy animals are not included in the sample, survey estimates are subject to sampling variability. Survey results are also subject to non-sampling errors such as omissions, duplications, and mistakes in reporting, recording, and processing the data. The effects of these errors cannot be measured directly. They are minimized through rigid quality controls in the data collection process and through a careful review of all reported data for consistency and reasonableness.

To assist users in evaluating the reliability of the estimates in this report, the "Root Mean Square Error" is shown for selected items on the next page. The "Root Mean Square Error" is a statistical measure based on past performance and is computed using the differences between first and final estimates. The "Root Mean Square Error" for milk cow inventory estimates over the past 10 October-December quarters is 0.5 percent. This means that chances are 2 out of 3 that the final October-December estimate will not be above or below the current estimate of 9.01 million head by more than 0.5 percent. Chances are 9 out of 10 that the difference will not exceed 0.9 percent.

Reliability of October-December Milk Estimates ¹

Item	Root Mean Square Error	90% Confidence Level		Difference Between First and Latest Estimates			Quarters	
				Average	Smallest	Largest	First Above Latest	First Below Latest
				<i>Million Pounds</i>	<i>Million Pounds</i>	<i>Million Pounds</i>	<i>Number</i>	<i>Number</i>
Milk Production	<i>Percent</i>	<i>Percent</i>	<i>Million Pounds</i>	<i>Million Pounds</i>	<i>Million Pounds</i>	<i>Million Pounds</i>	<i>Number</i>	<i>Number</i>
	0.4	0.8	332	146	1	233	6	4
All Milk Cows	<i>Percent</i>	<i>Percent</i>	<i>1,000 Head</i>	<i>1,000 Head</i>	<i>1,000 Head</i>	<i>1,000 Head</i>	<i>Number</i>	<i>Number</i>
	0.5	0.9	81	31	2	106	7	3

¹ Based on records for the past 10 October-December quarters.

The next "Milk Production" report will be released at 3 p.m. ET on April 16, 2004.

The United States Department of Agriculture (USDA) prohibits discrimination in all its programs on the basis of race, color, national origin, gender, religion, age, disability, political beliefs, sexual orientation, and marital or family status. (Not all prohibited bases apply to all programs.) Persons with disabilities who require alternative means for communication of program information (braille, large print, audiotape, etc.) should contact the USDA's TARGET Center at 202-720-2600 (voice and TDD).

To file a complaint of discrimination, write USDA, Director, Office of Civil Rights, Room 326-W, Whitten Building, 1400 Independence Avenue, SW, Washington, D.C., 20250-9410, or call 202-720-5964 (voice or TDD). USDA is an equal opportunity provider and employer.

ACCESS TO REPORTS!!

For your convenience, there are several ways to obtain NASS reports, data products, and services:

INTERNET ACCESS

All NASS reports are available free of charge on the worldwide Internet. For access, connect to the Internet and go to the NASS Home Page at: www.usda.gov/nass/. Select "Today's Reports" or Publications and then Reports Calendar or Publications and then Search, by Title or Subject.

E-MAIL SUBSCRIPTION

All NASS reports are available by subscription free of charge direct to your e-mail address. Starting with the NASS Home Page at www.usda.gov/nass/, click on **Publications**, then click on the **Subscribe by E-mail** button which takes you to the page describing e-mail delivery of reports. Finally, click on **Go to the Subscription Page** and follow the instructions.

PRINTED REPORTS OR DATA PRODUCTS

CALL OUR TOLL-FREE ORDER DESK: 800-999-6779 (U.S. and Canada)
Other areas, please call 703-605-6220 FAX: 703-605-6900
(Visa, MasterCard, check, or money order acceptable for payment.)

ASSISTANCE

For **assistance** with general agricultural statistics or further information about NASS or its products or services, contact the **Agricultural Statistics Hotline** at **800-727-9540**, 7:30 a.m. to 4:00 p.m. ET, or e-mail: nass@nass.usda.gov.
