

Released April 16, 2004, by the National Agricultural Statistics Service (NASS), Agricultural Statistics Board, U.S. Department of Agriculture. For information on *Milk Production* call Ty Kalas at 202-690-3236, office hours 7:30 a.m. to 4:00 p.m. ET.

March Milk Production Down 1.8 Percent

Milk production in the 20 major States during March totaled 12.8 billion pounds, down 1.8 percent from March 2003. February revised production, at 11.8 billion pounds, was up 1.4 percent from February 2003. However, adjusting for leap year, February milk production was down 2.1 percent on a per day basis from last year. The February revision represented a decrease of 35 million pounds or 0.3 percent from last month's preliminary production estimate.

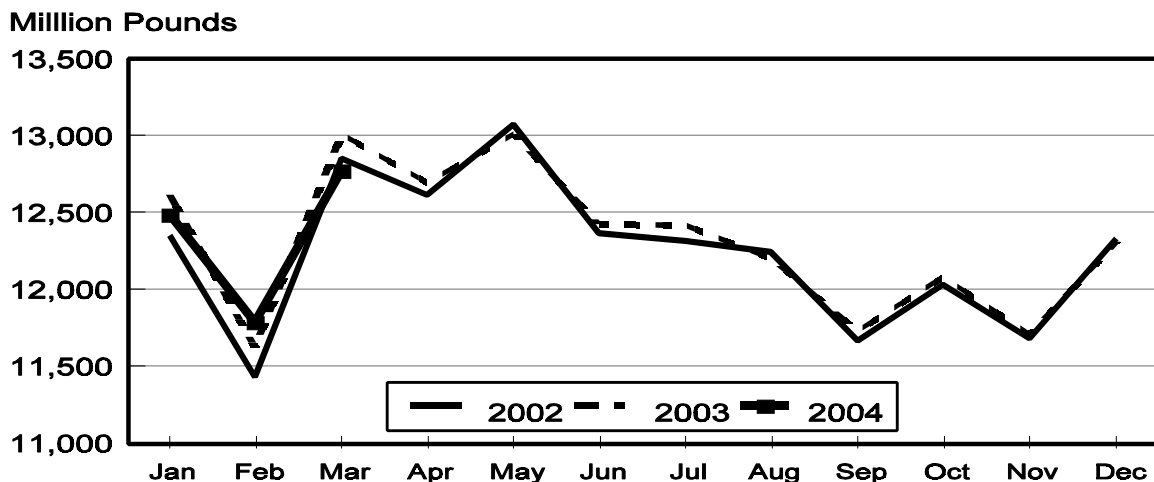
Production per cow in the 20 major States averaged 1,656 pounds for March, 10 pounds below March 2003.

The number of milk cows on farms in the 20 major States was 7.71 million head, 96,000 head less than March 2003, and 2,000 head less than February 2004.

January-March Milk Production Down 0.9 Percent

Milk production in the U.S. during the January-March quarter totaled 42.7 billion pounds, down 0.9 percent from the January-March quarter last year. The average number of milk cows in the U.S. during the quarter was 8.99 million head, 153,000 head less than the same period last year.

Monthly Milk Production 20 States



Milk Cows and Production: By Quarter, United States, 2003-2004 ¹

Quarter	Milk Cows ²		Milk Per Cow ³		Milk Production ³		
	2003	2004	2003	2004	2003	2004	Change From 2003
	<i>1,000 Head</i>	<i>1,000 Head</i>	<i>Pounds</i>	<i>Pounds</i>	<i>Million Pounds</i>	<i>Million Pounds</i>	<i>Percent</i>
Jan-Mar	9,144	8,991	4,710	4,748	43,069	42,688	-0.9
Apr-Jun	9,109		4,827		43,965		
Jul-Sep	9,073		4,601		41,746		
Oct-Dec	9,011		4,609		41,532		
Annual	9,084		18,749		170,312		

¹ May not add due to rounding.

² Includes dry cows, excludes heifers not yet fresh.

³ Excludes milk sucked by calves.

Milk Cows and Production: By Month, 20 Selected States, 2003-2004 ¹

	Milk Cows ²		Milk Per Cow ³		Milk Production ³		
	2003	2004	2003	2004	2003	2004	Change From 2003
	<i>1,000 Head</i>	<i>1,000 Head</i>	<i>Pounds</i>	<i>Pounds</i>	<i>Million Pounds</i>	<i>Million Pounds</i>	<i>Percent</i>
Jan	7,810	7,716	1,615	1,619	12,616	12,491	-1.0
Feb	7,811	7,716	1,489	1,528	11,628	11,787	1.4
Mar	7,810	7,714	1,666	1,656	13,014	12,776	-1.8
Apr	7,800		1,627		12,693		
May	7,787		1,671		13,013		
Jun	7,785		1,596		12,428		
Jul	7,780		1,597		12,421		
Aug	7,771		1,571		12,207		
Sep	7,764		1,511		11,731		
Oct	7,743		1,561		12,083		
Nov	7,721		1,517		11,709		
Dec	7,713		1,596		12,313		
Annual	7,775		19,017		147,856		

¹ 2004 revised.

² Includes dry cows, excludes heifers not yet fresh.

³ Excludes milk sucked by calves.

Estimated Milk Cows and Production: By Month, United States, 2003- 2004 ¹

Month	Milk Cows ²		Milk Per Cow ³		Milk Production ³		
	2003	2004	2003	2004	2003	2004	Change From 2003
	<i>1,000 Head</i>	<i>1,000 Head</i>	<i>Pounds</i>	<i>Pounds</i>	<i>Million Pounds</i>	<i>Million Pounds</i>	<i>Percent</i>
Jan	9,147	8,994	1,594	1,600	14,584	14,389	-1.3
Feb	9,145	8,992	1,470	1,510	13,441	13,578	1.0
Mar	9,141	8,988	1,646	1,638	15,044	14,721	-2.1
Apr	9,125		1,604		14,634		
May	9,104		1,648		15,003		
Jun	9,097		1,575		14,328		
Jul	9,087		1,570		14,263		
Aug	9,072		1,545		14,015		
Sep	9,061		1,486		13,468		
Oct	9,034		1,538		13,898		
Nov	9,005		1,496		13,470		
Dec	8,994		1,575		14,164		
Annual	9,084		18,749		170,312		

¹ 2004 revised.

² Includes dry cows, excludes heifers not yet fresh.

³ Excludes milk sucked by calves.

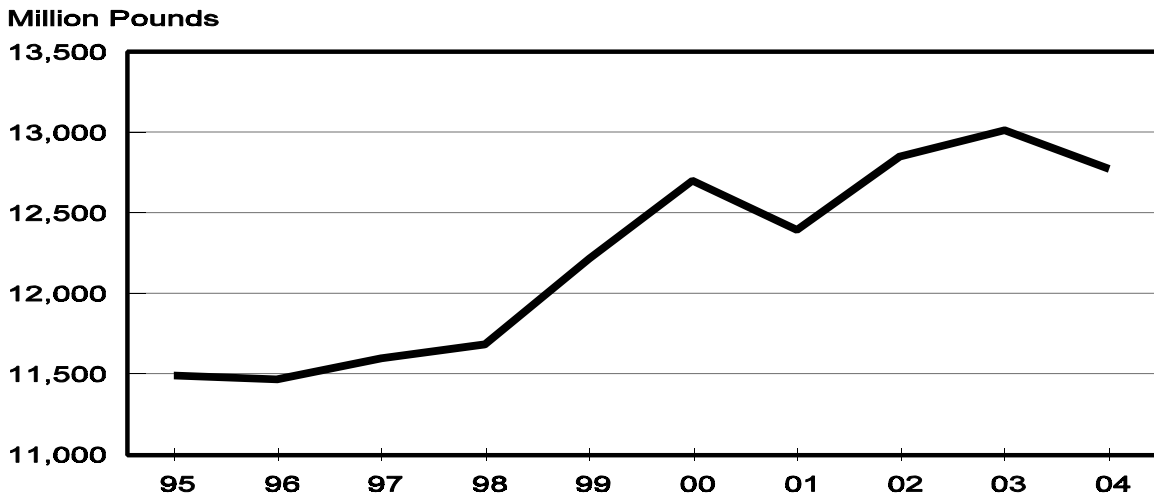
Milk Cows and Production: By State, March 2003-2004

State	Milk Cows ¹		Milk Per Cow ²		Milk Production ²		
	2003	2004	2003	2004	2003	2004	Change From 2003
	<i>1,000 Head</i>	<i>1,000 Head</i>	<i>Pounds</i>	<i>Pounds</i>	<i>Million Pounds</i>	<i>Million Pounds</i>	<i>Percent</i>
AZ	155	155	2,085	2,095	323	325	0.6
CA	1,681	1,708	1,850	1,810	3,110	3,091	-0.6
FL	145	139	1,435	1,540	208	214	2.9
ID	395	413	1,850	1,810	731	748	2.3
IL	113	108	1,670	1,650	189	178	-5.8
IN	147	145	1,720	1,730	253	251	-0.8
IA	203	194	1,640	1,630	333	316	-5.1
KY	120	109	1,135	1,175	136	128	-5.9
MI	302	298	1,800	1,790	544	533	-2.0
MN	480	465	1,540	1,510	739	702	-5.0
MO	131	123	1,340	1,345	176	165	-6.3
NM	315	327	1,835	1,765	578	577	-0.2
NY	680	660	1,540	1,510	1,047	997	-4.8
OH	260	260	1,500	1,520	390	395	1.3
PA	585	564	1,600	1,570	936	885	-5.4
TX	320	317	1,610	1,735	515	550	6.8
VT	151	144	1,535	1,540	232	222	-4.3
VA	116	101	1,360	1,450	158	146	-7.6
WA	248	240	1,950	1,925	484	462	-4.5
WI	1,263	1,244	1,530	1,520	1,932	1,891	-2.1
20-State Total	7,810	7,714	1,666	1,656	13,014	12,776	-1.8

¹ Includes dry cows, excludes heifers not yet fresh.

² Excludes milk sucked by calves.

**March Milk Production, 1995-2004
20 States**



Milk Cows and Production: By State, February 2003-2004 ¹

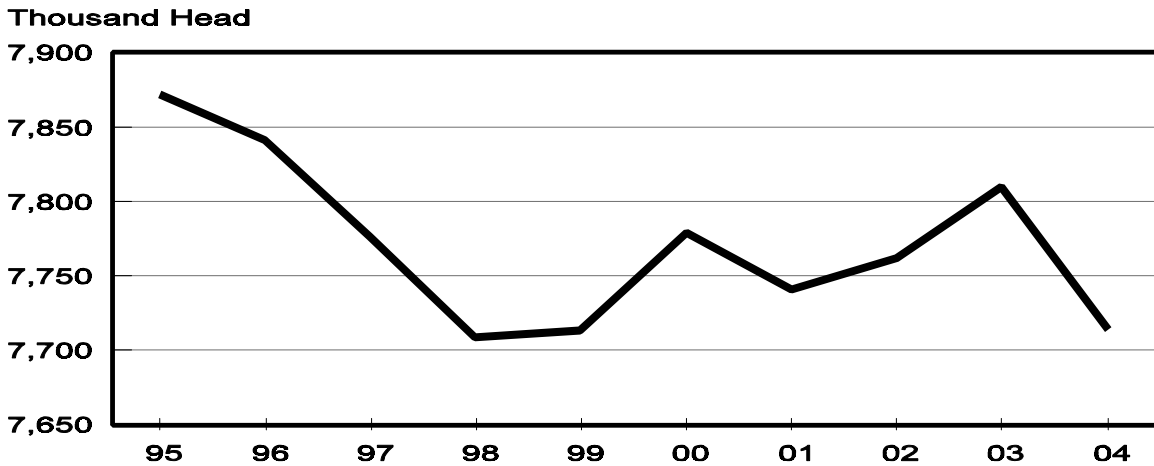
State	Milk Cows ²		Milk per Cow ³		Milk Production ³		
	2003	2004	2003	2004	2003	2004	Change From 2003
	<i>1,000 Head</i>	<i>1,000 Head</i>	<i>Pounds</i>	<i>Pounds</i>	<i>Million Pounds</i>	<i>Million Pounds</i>	<i>Percent</i>
AZ	155	155	1,850	1,955	287	303	5.6
CA	1,676	1,705	1,655	1,670	2,774	2,847	2.6
FL	146	139	1,290	1,410	188	196	4.3
ID	394	412	1,650	1,660	650	684	5.2
IL	114	108	1,485	1,520	169	164	-3.0
IN	147	145	1,525	1,590	224	231	3.1
IA	204	194	1,480	1,510	302	293	-3.0
KY	120	111	1,000	1,035	120	115	-4.2
MI	302	299	1,590	1,670	480	499	4.0
MN	480	465	1,385	1,415	665	658	-1.1
MO	133	124	1,150	1,185	153	147	-3.9
NM	314	326	1,605	1,660	504	541	7.3
NY	677	660	1,400	1,400	948	924	-2.5
OH	260	259	1,360	1,370	354	355	0.3
PA	588	564	1,430	1,425	841	804	-4.4
TX	320	317	1,410	1,585	451	502	11.3
VT	152	145	1,370	1,435	208	208	
VA	116	103	1,235	1,330	143	137	-4.2
WA	248	240	1,750	1,790	434	430	-0.9
WI	1,265	1,245	1,370	1,405	1,733	1,749	0.9
20-State Total	7,811	7,716	1,489	1,528	11,628	11,787	1.4

¹ 2004 revised.

² Includes dry cows, excludes heifers not yet fresh.

³ Excludes milk sucked by calves.

**March Milk Cows, 1995-2004
20 States**



**Milk Cows and Production: By State and United States,
Revised October-December, 2002-2003**

State	Oct-Dec Milk Cows ¹		Oct-Dec Milk Production ²		Change From 2002
	2002	2003	2002	2003	
	<i>1,000 Head</i>	<i>1,000 Head</i>	<i>Million Pounds</i>	<i>Million Pounds</i>	<i>Percent</i>
AL	19	18	63	60	-4.8
AK	1.3	1.2	4.36	3.50	-19.7
AZ	153	155	822	838	1.9
AR	31	28	87	80	-8.0
CA	1,666	1,696	8,720	8,695	-0.3
CO	99	99	540	540	
CT	23	21	107	99	-7.5
DE	9.0	8.0	35.0	32.0	-8.6
FL	147	140	503	510	1.4
GA	85	84	344	337	-2.0
HI	6.6	6.6	22.7	21.1	-7.0
ID	390	412	2,041	2,209	8.2
IL	115	109	500	498	-0.4
IN	147	150	668	748	12.0
IA	208	197	936	913	-2.5
KS	111	110	520	530	1.9
KY	120	112	374	350	-6.4
LA	45	41	126	118	-6.3
ME	36	34	157	151	-3.8
MD	80	77	315	301	-4.4
MA	20	18	87	76	-12.6
MI	302	301	1,529	1,575	3.0
MN	480	465	2,042	1,993	-2.4
MS	33	29	105	96	-8.6
MO	135	125	466	455	-2.4
MT	18	18	85	86	1.2
NE	66	62	290	270	-6.9
NV	25	26	125	120	-4.0
NH	17	16	79	73	-7.6
NJ	13	12	57	50	-12.3
NM	311	321	1,566	1,650	5.4
NY	673	661	2,974	2,871	-3.5
NC	63	59	267	250	-6.4
ND	38	34	140	131	-6.4
OH	261	258	1,086	1,093	0.6
OK	83	81	317	320	0.9
OR	117	118	529	535	1.1
PA	591	561	2,641	2,445	-7.4
RI	1.4	1.3	5.4	5.0	-7.4
SC	20	18	83	72	-13.3
SD	84	80	312	321	2.9
TN	84	77	305	285	-6.6
TX	320	317	1,292	1,405	8.7
UT	92	90	416	398	-4.3
VT	153	146	654	640	-2.1
VA	117	108	451	414	-8.2
WA	247	243	1,374	1,359	-1.1
WV	15	14	57	52	-8.8
WI	1,267	1,249	5,409	5,444	0.6
WY	4.1	3.9	14.3	14.4	0.7
US ³	9,142	9,011	41,643	41,532	-0.3

¹ Includes dry cows, excludes heifers not yet fresh.

² Excludes milk sucked by calves.

³ May not add due to rounding.

**Milk Cows and Production: By State and United States,
Preliminary January-March, 2003-2004**

State	Jan-Mar Milk Cows ¹		Jan-Mar Milk Production ²		Change From 2003
	2003	2004	2003	2004	
	<i>1,000 Head</i>	<i>1,000 Head</i>	<i>Million Pounds</i>	<i>Million Pounds</i>	<i>Percent</i>
AL	18	17	70	70	
AK	1.3	1.2	4.30	3.60	-16.3
AZ	155	155	915	940	2.7
AR	30	27	96	87	-9.4
CA	1,676	1,705	8,877	8,923	0.5
CO	101	100	547	546	-0.2
CT	23	21	109	102	-6.4
DE	8.5	7.8	37.0	34.5	-6.8
FL	146	139	596	611	2.5
GA	85	84	399	380	-4.8
HI	6.6	6.5	24.0	21.3	-11.3
ID	394	412	2,087	2,174	4.2
IL	114	108	538	516	-4.1
IN	147	145	727	731	0.6
IA	205	195	965	923	-4.4
KS	112	111	540	543	0.6
KY	120	111	390	365	-6.4
LA	44	40	149	140	-6.0
ME	35	34	155	151	-2.6
MD	79	76	319	306	-4.1
MA	20	17	88	75	-14.8
MI	302	299	1,557	1,566	0.6
MN	480	465	2,134	2,060	-3.5
MS	32	28	122	109	-10.7
MO	133	124	495	470	-5.1
MT	18	18	86	86	
NE	66	61	297	271	-8.8
NV	26	25	122	125	2.5
NH	17	16	79	76	-3.8
NJ	13	12	57	52	-8.8
NM	314	326	1,622	1,690	4.2
NY	677	659	3,018	2,901	-3.9
NC	62	58	279	264	-5.4
ND	37	33	143	129	-9.8
OH	260	259	1,120	1,124	0.4
OK	83	80	336	330	-1.8
OR	117	120	526	546	3.8
PA	588	564	2,686	2,534	-5.7
RI	1.4	1.2	5.8	5.2	-10.3
SC	20	17	95	78	-17.9
SD	84	80	333	339	1.8
TN	82	77	325	310	-4.6
TX	320	317	1,448	1,578	9.0
UT	92	88	399	387	-3.0
VT	152	145	669	651	-2.7
VA	116	103	459	429	-6.5
WA	248	240	1,392	1,348	-3.2
WV	15	14	56	53	-5.4
WI	1,264	1,245	5,563	5,520	-0.8
WY	3.9	4.0	13.3	14.4	8.3
US ³	9,144	8,991	43,069	42,688	-0.9

¹ Includes dry cows, excludes heifers not yet fresh.

² Excludes milk sucked by calves.

³ May not add due to rounding.

Reliability Statement

Survey Procedures: Primary data used to determine these estimates were obtained from a sample of producers. Individual States maintain a list of all known milk producers and information on the size of their herd. States use all known sources of producers to ensure that their lists are as complete as possible. Generally, all large producers and a sample of small producers are included in the survey. Questionnaires are mailed to producers near the end of the month to obtain data for the first day of the month. Additional reports are obtained by telephone, as needed, to supplement the mail response. Where feasible, States utilize state and federal administrative data, rather than conduct a monthly or quarterly survey, to estimate milk production. This eliminates duplication of data gathering by different government agencies. Indications of milk cow inventory are also obtained in the January and July Cattle Surveys.

Estimation Procedures: State offices prepare these estimates by using a combination of survey indications, historic trends, and any available administrative data. Individual State estimates are reviewed by the Agricultural Statistics Board for reasonableness.

Revision Policy: Milk production, rate per cow, and number of cows are subject to revision the following month for monthly States or the following quarter for the quarterly States. Normally, Federal Market Order sales are the main basis for revisions. However, data for all orders are not available in time for this revision. Estimates are again subject to revisions in February each year based on additional administrative data. In the event that additional changes are necessary, a third revision is possible in February the following year. Estimates are again reviewed after data from the five-year Census of Agriculture are available. No revisions are made after that date.

Reliability: Since all operations with dairy animals are not included in the sample, survey estimates are subject to sampling variability. Survey results are also subject to non-sampling errors such as omissions, duplications, and mistakes in reporting, recording, and processing the data. The effects of these errors cannot be measured directly. They are minimized through rigid quality controls in the data collection process and through a careful review of all reported data for consistency and reasonableness.

To assist users in evaluating the reliability of the estimates in this report, the "Root Mean Square Error" is shown for selected items on the next page. The "Root Mean Square Error" is a statistical measure based on past performance and is computed using the differences between first and final estimates. The "Root Mean Square Error" for milk cow inventory estimates over the past 10 January-March quarters is 0.5 percent. This means that chances are 2 out of 3 that the final January-March estimate will not be above or below the current estimate of 8.99 million head by more than 0.5 percent. Chances are 9 out of 10 that the difference will not exceed 0.9 percent.

Reliability of January-March Milk Estimates ¹

Item	Root Mean Square Error	90% Confidence Level		Difference Between First and Latest Estimates			Quarters	
				Average	Smallest	Largest	First Above Latest	First Below Latest
				<i>Million Pounds</i>	<i>Million Pounds</i>	<i>Million Pounds</i>	<i>Number</i>	<i>Number</i>
Milk Production	<i>Percent</i> 0.4	<i>Percent</i> 0.7	<i>Million Pounds</i> 299	<i>Million Pounds</i> 126	<i>Million Pounds</i> 18	<i>Million Pounds</i> 329	<i>Number</i> 5	<i>Number</i> 5
All Milk Cows	<i>Percent</i> 0.5	<i>Percent</i> 0.9	<i>1,000 Head</i> 81	<i>1,000 Head</i> 26	<i>1,000 Head</i> 0	<i>1,000 Head</i> 126	<i>Number</i> 6	<i>Number</i> 3

¹ Based on records for the past 10 January-March quarters.

The next *Milk Production* report will be released at 3 p.m. ET on May 17, 2004.

The United States Department of Agriculture (USDA) prohibits discrimination in all its programs on the basis of race, color, national origin, gender, religion, age, disability, political beliefs, sexual orientation, and marital or family status. (Not all prohibited bases apply to all programs.) Persons with disabilities who require alternative means for communication of program information (braille, large print, audiotape, etc.) should contact the USDA's TARGET Center at 202-720-2600 (voice and TDD).

To file a complaint of discrimination, write USDA, Director, Office of Civil Rights, Room 326-W, Whitten Building, 1400 Independence Avenue, SW, Washington, D.C., 20250-9410, or call 202-720-5964 (voice or TDD). USDA is an equal opportunity provider and employer.

ACCESS TO REPORTS!!

For your convenience, there are several ways to obtain NASS reports, data products, and services:

INTERNET ACCESS

All NASS reports are available free of charge on the worldwide Internet. For access, connect to the Internet and go to the NASS Home Page at: www.usda.gov/nass/. Select "Today's Reports" or Publications and then Reports Calendar or Publications and then Search, by Title or Subject.

E-MAIL SUBSCRIPTION

All NASS reports are available by subscription free of charge direct to your e-mail address. Starting with the NASS Home Page at www.usda.gov/nass/, click on **Publications**, then click on the **Subscribe by E-mail** button which takes you to the page describing e-mail delivery of reports. Finally, click on **Go to the Subscription Page** and follow the instructions.

PRINTED REPORTS OR DATA PRODUCTS

CALL OUR TOLL-FREE ORDER DESK: 800-999-6779 (U.S. and Canada)
Other areas, please call 703-605-6220 FAX: 703-605-6900
(Visa, MasterCard, check, or money order acceptable for payment.)

ASSISTANCE

For **assistance** with general agricultural statistics or further information about NASS or its products or services, contact the **Agricultural Statistics Hotline** at **800-727-9540**, 7:30 a.m. to 4:00 p.m. ET, or e-mail: nass@nass.usda.gov.
