

Released June 16, 2004, by the National Agricultural Statistics Service (NASS), Agricultural Statistics Board, U.S. Department of Agriculture. For information on *Milk Production* call Ty Kalas at 202-690-3236, office hours 7:30 a.m. to 4:00 p.m. ET.

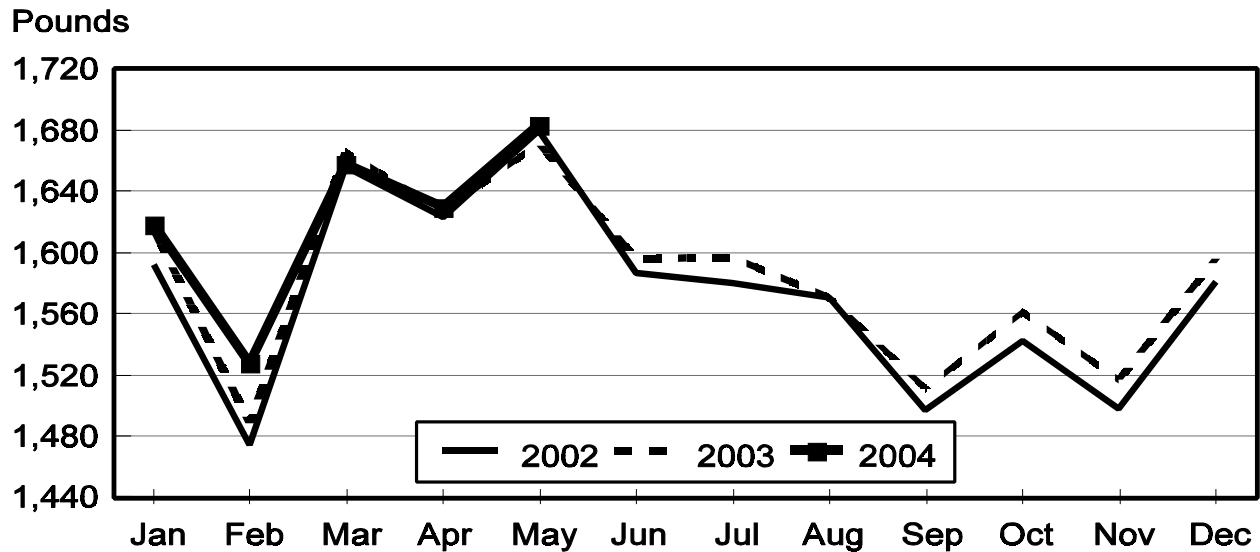
May Milk Production Down 0.1 Percent

Milk production in the 20 major States during May totaled 13.0 billion pounds, down 0.1 percent from May 2003. April revised production, at 12.6 billion pounds, was down 0.8 percent from April 2003. The April revision represented an increase of 4 million pounds from last month's preliminary production estimate.

Production per cow in the 20 major States averaged 1,684 pounds for May, 13 pounds above May 2003.

The number of milk cows on farms in the 20 major States was 7.72 million head, 71,000 head less than May 2003, and 5,000 head less than April 2004.

Monthly Milk per Cow 20 States



Milk Cows and Production: By Quarter, United States, 2003-2004¹

Quarter	Milk Cows ²		Milk Per Cow ³		Milk Production ³		
	2003	2004	2003	2004	2003	2004	Change From 2003
	<i>1,000 Head</i>	<i>1,000 Head</i>	<i>Pounds</i>	<i>Pounds</i>	<i>Million Pounds</i>	<i>Million Pounds</i>	<i>Percent</i>
Jan-Mar	9,144	8,991	4,710	4,750	43,069	42,710	-0.8
Apr-Jun	9,109		4,827		43,965		
Jul-Sep	9,073		4,601		41,746		
Oct-Dec	9,011		4,609		41,532		
Annual	9,084		18,749		170,312		

¹ May not add due to rounding.

² Includes dry cows, excludes heifers not yet fresh.

³ Excludes milk sucked by calves.

Milk Cows and Production: By Month, 20 Selected States, 2003-2004¹

	Milk Cows ²		Milk Per Cow ³		Milk Production ³		
	2003	2004	2003	2004	2003	2004	Change From 2003
	<i>1,000 Head</i>	<i>1,000 Head</i>	<i>Pounds</i>	<i>Pounds</i>	<i>Million Pounds</i>	<i>Million Pounds</i>	<i>Percent</i>
Jan	7,810	7,716	1,615	1,619	12,616	12,491	-1.0
Feb	7,811	7,716	1,489	1,528	11,628	11,787	1.4
Mar	7,810	7,717	1,666	1,658	13,014	12,798	-1.7
Apr	7,800	7,721	1,627	1,630	12,693	12,588	-0.8
May	7,787	7,716	1,671	1,684	13,013	12,994	-0.1
Jun	7,785		1,596		12,428		
Jul	7,780		1,597		12,421		
Aug	7,771		1,571		12,207		
Sep	7,764		1,511		11,731		
Oct	7,743		1,561		12,083		
Nov	7,721		1,517		11,709		
Dec	7,713		1,596		12,313		
Annual	7,775		19,017		147,856		

¹ 2004 revised.

² Includes dry cows, excludes heifers not yet fresh.

³ Excludes milk sucked by calves.

Estimated Milk Cows and Production: By Month, United States, 2003- 2004¹

Month	Milk Cows ²		Milk Per Cow ³		Milk Production ³		
	2003	2004	2003	2004	2003	2004	Change From 2003
	<i>1,000 Head</i>	<i>1,000 Head</i>	<i>Pounds</i>	<i>Pounds</i>	<i>Million Pounds</i>	<i>Million Pounds</i>	<i>Percent</i>
Jan	9,147	8,994	1,594	1,600	14,584	14,389	-1.3
Feb	9,145	8,992	1,470	1,510	13,441	13,578	1.0
Mar	9,141	8,990	1,646	1,640	15,044	14,743	-2.0
Apr	9,125	8,991	1,604	1,609	14,634	14,469	-1.1
May	9,104	8,982	1,648	1,663	15,003	14,940	-0.4
Jun	9,097		1,575		14,328		
Jul	9,087		1,570		14,263		
Aug	9,072		1,545		14,015		
Sep	9,061		1,486		13,468		
Oct	9,034		1,538		13,898		
Nov	9,005		1,496		13,470		
Dec	8,994		1,575		14,164		
Annual	9,084		18,749		170,312		

¹ 2004 revised.

² Includes dry cows, excludes heifers not yet fresh.

³ Excludes milk sucked by calves.

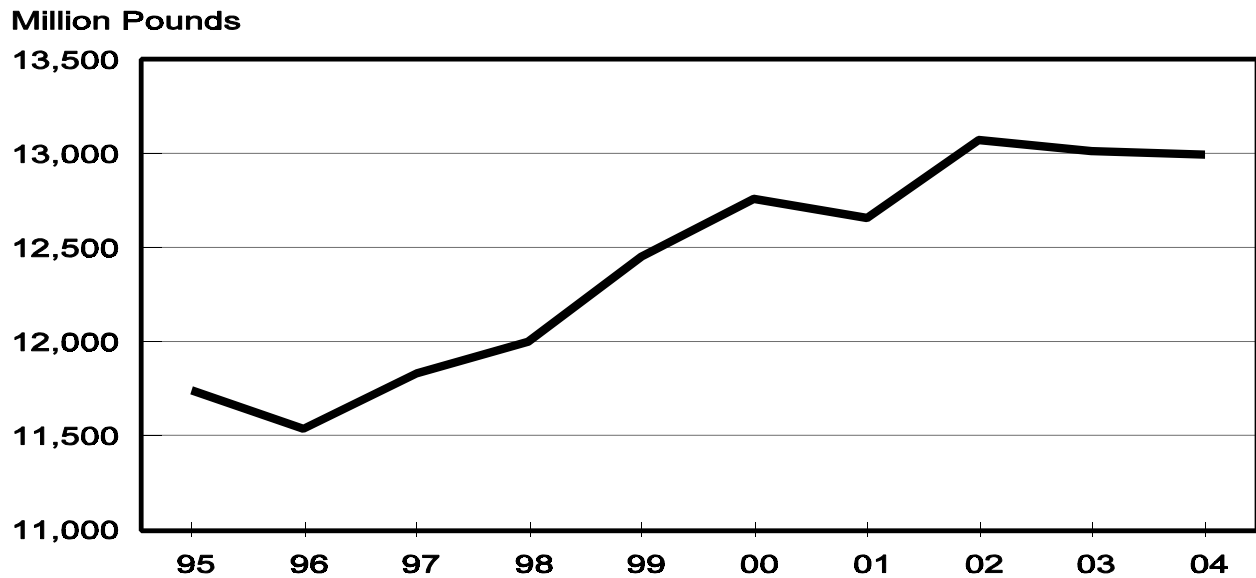
Milk Cows and Production: By State, May 2003-2004

State	Milk Cows ¹		Milk Per Cow ²		Milk Production ²		
	2003	2004	2003	2004	2003	2004	Change From 2003
	<i>1,000 Head</i>	<i>1,000 Head</i>	<i>Pounds</i>	<i>Pounds</i>	<i>Million Pounds</i>	<i>Million Pounds</i>	<i>Percent</i>
AZ	155	155	2,055	2,090	319	324	1.6
CA	1,685	1,720	1,835	1,835	3,092	3,156	2.1
FL	143	138	1,385	1,490	198	206	4.0
ID	400	415	1,870	1,840	748	764	2.1
IL	110	108	1,650	1,620	182	175	-3.8
IN	148	148	1,700	1,700	252	252	
IA	203	194	1,640	1,630	333	316	-5.1
KY	119	108	1,125	1,155	134	125	-6.7
MI	301	299	1,790	1,805	539	540	0.2
MN	475	460	1,530	1,550	727	713	-1.9
MO	130	124	1,345	1,380	175	171	-2.3
NM	315	327	1,890	1,840	595	602	1.2
NY	677	655	1,570	1,580	1,063	1,035	-2.6
OH	261	262	1,560	1,560	407	409	0.5
PA	580	557	1,600	1,605	928	894	-3.7
TX	320	317	1,600	1,720	512	545	6.4
VT	149	144	1,565	1,565	233	225	-3.4
VA	115	102	1,370	1,460	158	149	-5.7
WA	244	240	1,975	1,970	482	473	-1.9
WI	1,257	1,243	1,540	1,545	1,936	1,920	-0.8
20-State Total	7,787	7,716	1,671	1,684	13,013	12,994	-0.1

¹ Includes dry cows, excludes heifers not yet fresh.

² Excludes milk sucked by calves.

**May Milk Production, 1995-2004
20 States**



Milk Cows and Production: By State, April 2003-2004 ¹

State	Milk Cows ²		Milk per Cow ³		Milk Production ³		
	2003	2004	2003	2004	2003	2004	Change From 2003
	<i>1,000 Head</i>	<i>1,000 Head</i>	<i>Pounds</i>	<i>Pounds</i>	<i>Million Pounds</i>	<i>Million Pounds</i>	<i>Percent</i>
AZ	155	155	2,045	2,055	317	319	0.6
CA	1,685	1,716	1,800	1,790	3,033	3,072	1.3
FL	144	138	1,415	1,480	204	204	
ID	397	414	1,800	1,770	715	733	2.5
IL	111	108	1,610	1,580	179	171	-4.5
IN	148	147	1,685	1,660	249	244	-2.0
IA	203	194	1,610	1,580	327	307	-6.1
KY	120	109	1,140	1,155	137	126	-8.0
MI	301	298	1,730	1,755	521	523	0.4
MN	475	465	1,500	1,480	713	688	-3.5
MO	130	124	1,325	1,370	172	170	-1.2
NM	315	327	1,810	1,760	570	576	1.1
NY	679	658	1,505	1,500	1,022	987	-3.4
OH	261	261	1,490	1,500	389	392	0.8
PA	582	561	1,575	1,550	917	870	-5.1
TX	320	317	1,600	1,705	512	540	5.5
VT	150	144	1,495	1,495	224	215	-4.0
VA	116	102	1,355	1,450	157	148	-5.7
WA	248	240	1,895	1,905	470	457	-2.8
WI	1,260	1,243	1,480	1,485	1,865	1,846	-1.0
20-State Total	7,800	7,721	1,627	1,630	12,693	12,588	-0.8

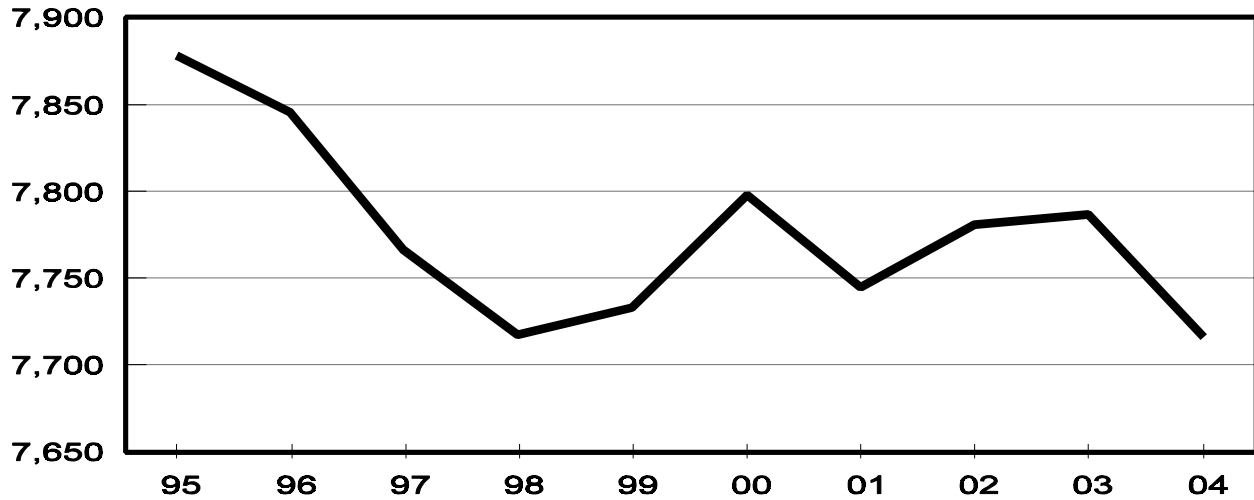
¹ 2004 revised.

² Includes dry cows, excludes heifers not yet fresh.

³ Excludes milk sucked by calves.

**May Milk Cows, 1995-2004
20 States**

Thousand Head



Reliability Statement

Survey Procedures: Primary data used to determine these estimates were obtained from a sample of producers. Individual States maintain a list of all known milk producers and information on the size of their herd. States use all known sources of producers to ensure that their lists are as complete as possible. Generally, all large producers and a sample of small producers are included in the survey. Questionnaires are mailed to producers near the end of the month to obtain data for the first day of the month. Additional reports are obtained by telephone, as needed, to supplement the mail response. Where feasible, States utilize state and federal administrative data, rather than conduct a monthly or quarterly survey, to estimate milk production. This eliminates duplication of data gathering by different government agencies. Indications of milk cow inventory are also obtained in the January and July Cattle Surveys.

Estimation Procedures: State offices prepare these estimates by using a combination of survey indications, historic trends, and any available administrative data. Individual State estimates are reviewed by the Agricultural Statistics Board for reasonableness.

Revision Policy: Milk production, rate per cow, and number of cows are subject to revision the following month for monthly States or the following quarter for the quarterly States. Normally, Federal Market Order sales are the main basis for revisions. However, data for all orders are not available in time for this revision. Estimates are again subject to revisions in February each year based on additional administrative data. In the event that additional changes are necessary, a third revision is possible in February the following year. Estimates are again reviewed after data from the five-year Census of Agriculture are available. No revisions are made after that date.

Reliability: Since all operations with dairy animals are not included in the sample, survey estimates are subject to sampling variability. Survey results are also subject to non-sampling errors such as omissions, duplications, and mistakes in reporting, recording, and processing the data. The effects of these errors cannot be measured directly. They are minimized through rigid quality controls in the data collection process and through a careful review of all reported data for consistency and reasonableness.

To assist users in evaluating the reliability of the estimates in this report, the "Root Mean Square Error" is shown for selected items on the next page. The "Root Mean Square Error" is a statistical measure based on past performance and is computed using the differences between first and final estimates. The "Root Mean Square Error" for milk cow inventory estimates over the past 10 January-March quarters is 0.5 percent. This means that chances are 2 out of 3 that the final January-March estimate will not be above or below the current estimate of 8.99 million head by more than 0.5 percent. Chances are 9 out of 10 that the difference will not exceed 0.9 percent.

Reliability of January-March Milk Estimates ¹

Item	Root Mean Square Error	90% Confidence Level		Difference Between First and Latest Estimates			Quarters	
				Average	Smallest	Largest	First Above Latest	First Below Latest
				<i>Million Pounds</i>	<i>Million Pounds</i>	<i>Million Pounds</i>	<i>Number</i>	<i>Number</i>
Milk Production	<i>Percent</i>	<i>Percent</i>	<i>Million Pounds</i>	<i>Million Pounds</i>	<i>Million Pounds</i>	<i>Million Pounds</i>	<i>Number</i>	<i>Number</i>
	0.4	0.7	299	126	18	329	5	5
All Milk Cows	<i>Percent</i>	<i>Percent</i>	<i>1,000 Head</i>	<i>1,000 Head</i>	<i>1,000 Head</i>	<i>1,000 Head</i>	<i>Number</i>	<i>Number</i>
	0.5	0.9	81	26	0	126	6	3

¹ Based on records for the past 10 January-March quarters.

ACCESS TO REPORTS!!

For your convenience, there are several ways to obtain NASS reports, data products, and services:

INTERNET ACCESS

All NASS reports are available free of charge on the worldwide Internet. For access, connect to the Internet and go to the NASS Home Page at: www.usda.gov/nass/. Select "Today's Reports" or Publications and then Reports Calendar or Publications and then Search, by Title or Subject.

E-MAIL SUBSCRIPTION

All NASS reports are available by subscription free of charge direct to your e-mail address. Starting with the NASS Home Page at www.usda.gov/nass/, click on **Publications**, then click on the **Subscribe by E-mail** button which takes you to the page describing e-mail delivery of reports. Finally, click on [Go to the Subscription Page](#) and follow the instructions.

PRINTED REPORTS OR DATA PRODUCTS

CALL OUR TOLL-FREE ORDER DESK: 800-999-6779 (U.S. and Canada)
Other areas, please call 703-605-6220 FAX: 703-605-6900
(Visa, MasterCard, check, or money order acceptable for payment.)

ASSISTANCE

For **assistance** with general agricultural statistics or further information about NASS or its products or services, contact the **Agricultural Statistics Hotline** at **800-727-9540**, 7:30 a.m. to 4:00 p.m. ET, or e-mail: nass@nass.usda.gov.

The United States Department of Agriculture (USDA) prohibits discrimination in all its programs on the basis of race, color, national origin, gender, religion, age, disability, political beliefs, sexual orientation, and marital or family status. (Not all prohibited bases apply to all programs.) Persons with disabilities who require alternative means for communication of program information (braille, large print, audiotape, etc.) should contact the USDA's TARGET Center at 202-720-2600 (voice and TDD).

To file a complaint of discrimination, write USDA, Director, Office of Civil Rights, Room 326-W, Whitten Building, 1400 Independence Avenue, SW, Washington, D.C., 20250-9410, or call 202-720-5964 (voice or TDD). USDA is an equal opportunity provider and employer.