

Released July 16, 2004, by the National Agricultural Statistics Service (NASS), Agricultural Statistics Board, U.S. Department of Agriculture. For information on *Milk Production* call Ty Kalas at 202-690-3236, office hours 7:30 a.m. to 4:00 p.m. ET.

June Milk Production Down 0.2 Percent

Milk production in the 20 major States during June totaled 12.4 billion pounds, down 0.2 percent from June 2003. May revised production, at 13.0 billion pounds, was down 6 million pounds from May 2003. The May revision represented an increase of 13 million pounds or 0.1 percent from last month's preliminary production estimate.

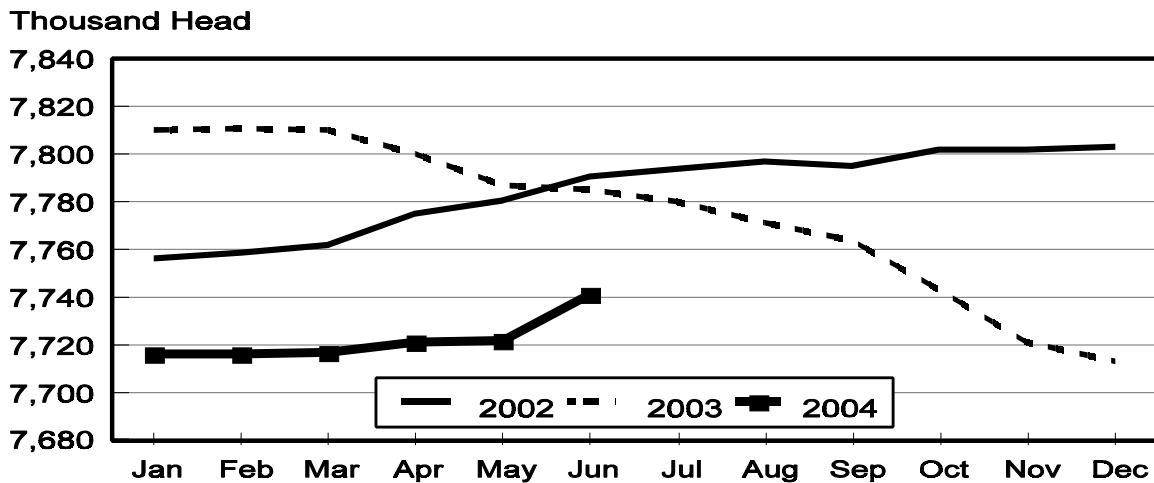
Production per cow in the 20 major States averaged 1,603 pounds for June, 7 pounds above June 2003.

The number of milk cows on farms in the 20 major States was 7.74 million head, 44,000 head less than June 2003, but 19,000 head more than May 2004.

April-June Milk Production Down 0.6 Percent

Milk production in the U.S. during the April-June quarter totaled 43.7 billion pounds, down 0.6 percent from the April-June quarter last year. The average number of milk cows in the U.S. during the quarter was 9.00 million head, 112,000 head less than the same period last year.

Monthly Milk Cows 20 States



Milk Cows and Production: By Quarter, United States, 2003-2004¹

Quarter	Milk Cows ²		Milk Per Cow ³		Milk Production ³		
	2003	2004	2003	2004	2003	2004	Change From 2003
	<i>1,000 Head</i>	<i>1,000 Head</i>	<i>Pounds</i>	<i>Pounds</i>	<i>Million Pounds</i>	<i>Million Pounds</i>	<i>Percent</i>
Jan-Mar	9,144	8,990	4,710	4,750	43,069	42,701	-0.9
Apr-Jun	9,109	8,997	4,827	4,857	43,965	43,702	-0.6
Jul-Sep	9,073		4,601		41,746		
Oct-Dec	9,011		4,609		41,532		
Annual	9,084		18,749		170,312		

¹ May not add due to rounding.

² Includes dry cows, excludes heifers not yet fresh.

³ Excludes milk sucked by calves.

Milk Cows and Production: By Month, 20 Selected States, 2003-2004¹

	Milk Cows ²		Milk Per Cow ³		Milk Production ³		
	2003	2004	2003	2004	2003	2004	Change From 2003
	<i>1,000 Head</i>	<i>1,000 Head</i>	<i>Pounds</i>	<i>Pounds</i>	<i>Million Pounds</i>	<i>Million Pounds</i>	<i>Percent</i>
Jan	7,810	7,716	1,615	1,619	12,616	12,491	-1.0
Feb	7,811	7,716	1,489	1,528	11,628	11,787	1.4
Mar	7,810	7,717	1,666	1,658	13,014	12,798	-1.7
Apr	7,800	7,721	1,627	1,630	12,693	12,588	-0.8
May	7,787	7,722	1,671	1,684	13,013	13,007	
Jun	7,785	7,741	1,596	1,603	12,428	12,409	-0.2
Jul	7,780		1,597		12,421		
Aug	7,771		1,571		12,207		
Sep	7,764		1,511		11,731		
Oct	7,743		1,561		12,083		
Nov	7,721		1,517		11,709		
Dec	7,713		1,596		12,313		
Annual	7,775		19,017		147,856		

¹ 2004 revised.

² Includes dry cows, excludes heifers not yet fresh.

³ Excludes milk sucked by calves.

Estimated Milk Cows and Production: By Month, United States, 2003- 2004¹

Month	Milk Cows ²		Milk Per Cow ³		Milk Production ³		
	2003	2004	2003	2004	2003	2004	Change From 2003
	<i>1,000 Head</i>	<i>1,000 Head</i>	<i>Pounds</i>	<i>Pounds</i>	<i>Million Pounds</i>	<i>Million Pounds</i>	<i>Percent</i>
Jan	9,147	8,994	1,594	1,600	14,584	14,387	-1.4
Feb	9,145	8,989	1,470	1,510	13,441	13,575	1.0
Mar	9,141	8,987	1,646	1,640	15,044	14,739	-2.0
Apr	9,125	8,991	1,604	1,610	14,634	14,476	-1.1
May	9,104	8,989	1,648	1,664	15,003	14,958	-0.3
Jun	9,097	9,012	1,575	1,583	14,328	14,268	-0.4
Jul	9,087		1,570		14,263		
Aug	9,072		1,545		14,015		
Sep	9,061		1,486		13,468		
Oct	9,034		1,538		13,898		
Nov	9,005		1,496		13,470		
Dec	8,994		1,575		14,164		
Annual	9,084		18,749		170,312		

¹ 2004 revised.

² Includes dry cows, excludes heifers not yet fresh.

³ Excludes milk sucked by calves.

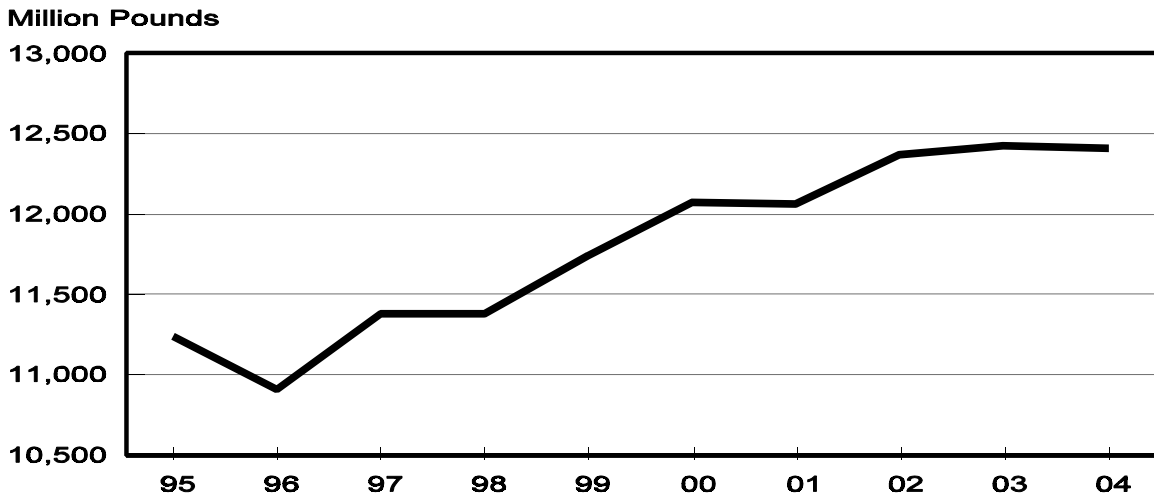
Milk Cows and Production: By State, June 2003-2004

State	Milk Cows ¹		Milk Per Cow ²		Milk Production ²		
	2003	2004	2003	2004	2003	2004	Change From 2003
	<i>1,000 Head</i>	<i>1,000 Head</i>	<i>Pounds</i>	<i>Pounds</i>	<i>Million Pounds</i>	<i>Million Pounds</i>	<i>Percent</i>
AZ	155	155	1,900	1,950	295	302	2.4
CA	1,684	1,725	1,765	1,755	2,972	3,027	1.9
FL	142	139	1,290	1,400	183	195	6.6
ID	407	422	1,840	1,820	749	768	2.5
IL	110	108	1,525	1,540	168	166	-1.2
IN	148	149	1,610	1,610	238	240	0.8
IA	202	193	1,575	1,530	318	295	-7.2
KY	118	112	1,015	1,035	120	116	-3.3
MI	302	300	1,750	1,730	529	519	-1.9
MN	475	460	1,465	1,480	696	681	-2.2
MO	130	124	1,220	1,250	159	155	-2.5
NM	315	328	1,795	1,790	565	587	3.9
NY	675	656	1,500	1,500	1,013	984	-2.9
OH	261	265	1,450	1,435	378	380	0.5
PA	578	557	1,480	1,495	855	833	-2.6
TX	320	320	1,470	1,570	470	502	6.8
VT	148	143	1,500	1,510	222	216	-2.7
VA	115	102	1,235	1,325	142	135	-4.9
WA	244	240	1,910	1,900	466	456	-2.1
WI	1,256	1,243	1,505	1,490	1,890	1,852	-2.0
20-State Total	7,785	7,741	1,596	1,603	12,428	12,409	-0.2

¹ Includes dry cows, excludes heifers not yet fresh.

² Excludes milk sucked by calves.

**June Milk Production, 1995-2004
20 States**



Milk Cows and Production: By State, May 2003-2004 ¹

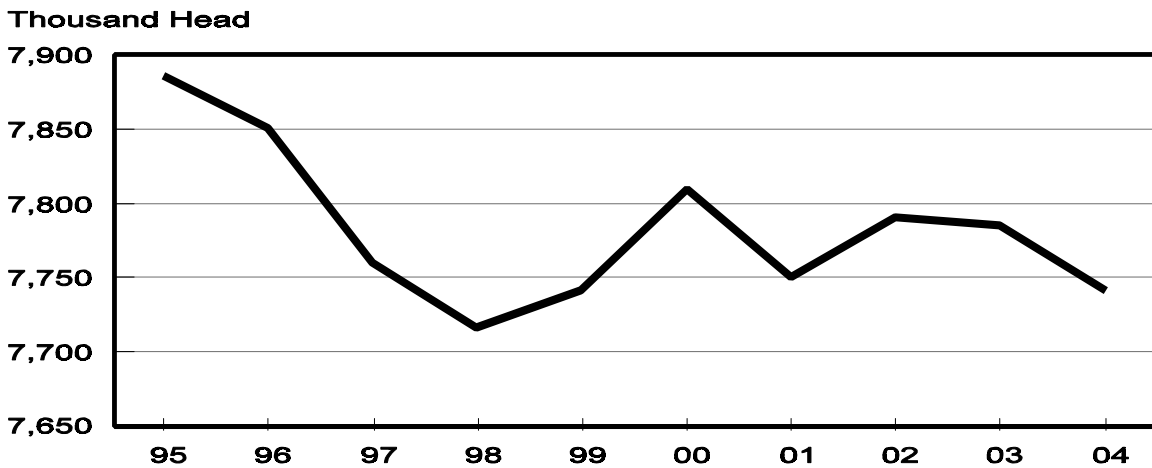
State	Milk Cows ²		Milk per Cow ³		Milk Production ³		
	2003	2004	2003	2004	2003	2004	Change From 2003
	<i>1,000 Head</i>	<i>1,000 Head</i>	<i>Pounds</i>	<i>Pounds</i>	<i>Million Pounds</i>	<i>Million Pounds</i>	<i>Percent</i>
AZ	155	155	2,055	2,090	319	324	1.6
CA	1,685	1,720	1,835	1,830	3,092	3,148	1.8
FL	143	139	1,385	1,525	198	212	7.1
ID	400	417	1,870	1,850	748	771	3.1
IL	110	108	1,650	1,620	182	175	-3.8
IN	148	148	1,700	1,700	252	252	
IA	203	194	1,640	1,630	333	316	-5.1
KY	119	110	1,125	1,190	134	131	-2.2
MI	301	299	1,790	1,805	539	540	0.2
MN	475	460	1,530	1,555	727	715	-1.7
MO	130	124	1,345	1,380	175	171	-2.3
NM	315	327	1,890	1,840	595	602	1.2
NY	677	655	1,570	1,580	1,063	1,035	-2.6
OH	261	263	1,560	1,550	407	408	0.2
PA	580	557	1,600	1,605	928	894	-3.7
TX	320	317	1,600	1,720	512	545	6.4
VT	149	144	1,565	1,565	233	225	-3.4
VA	115	102	1,370	1,460	158	149	-5.7
WA	244	240	1,975	1,975	482	474	-1.7
WI	1,257	1,243	1,540	1,545	1,936	1,920	-0.8
20-State Total	7,787	7,722	1,671	1,684	13,013	13,007	

¹ 2004 revised.

² Includes dry cows, excludes heifers not yet fresh.

³ Excludes milk sucked by calves.

**June Milk Cows, 1995-2004
20 States**



**Milk Cows and Production: By State and United States,
Revised January-March, 2003-2004**

State	Jan-Mar Milk Cows ¹		Jan-Mar Milk Production ²		Change From 2003
	2003	2004	2003	2004	
	<i>1,000 Head</i>	<i>1,000 Head</i>	<i>Million Pounds</i>	<i>Million Pounds</i>	<i>Percent</i>
AL	18	17	70	71	1.4
AK	1.3	1.2	4.3	3.6	-16.3
AZ	155	155	915	940	2.7
AR	30	27	96	87	-9.4
CA	1,676	1,705	8,877	8,927	0.6
CO	101	100	547	546	-0.2
CT	23	21	109	102	-6.4
DE	8.5	7.5	37.0	34.0	-8.1
FL	146	139	596	611	2.5
GA	85	84	399	381	-4.5
HI	6.6	6.5	24.0	21.3	-11.3
ID	394	412	2,087	2,161	3.5
IL	114	108	538	516	-4.1
IN	147	145	727	731	0.6
IA	205	195	965	923	-4.4
KS	112	111	540	543	0.6
KY	120	111	390	366	-6.2
LA	44	40	149	140	-6.0
ME	35	34	155	151	-2.6
MD	79	76	319	306	-4.1
MA	20	17	88	75	-14.8
MI	302	299	1,557	1,566	0.6
MN	480	465	2,134	2,060	-3.5
MS	32	28	122	109	-10.7
MO	133	124	495	470	-5.1
MT	18	18	86	85	-1.2
NE	66	61	297	267	-10.1
NV	26	25	122	125	2.5
NH	17	16	79	76	-3.8
NJ	13	12	57	52	-8.8
NM	314	326	1,622	1,690	4.2
NY	677	659	3,018	2,901	-3.9
NC	62	58	279	264	-5.4
ND	37	33	143	129	-9.8
OH	260	259	1,120	1,124	0.4
OK	83	80	336	330	-1.8
OR	117	120	526	546	3.8
PA	588	564	2,686	2,534	-5.7
RI	1.4	1.2	5.8	5.2	-10.3
SC	20	17	95	79	-16.8
SD	84	80	333	333	
TN	82	77	325	310	-4.6
TX	320	317	1,448	1,578	9.0
UT	92	88	399	387	-3.0
VT	152	145	669	651	-2.7
VA	116	103	459	434	-5.4
WA	248	240	1,392	1,348	-3.2
WV	15	14	56	53	-5.4
WI	1,264	1,245	5,563	5,545	-0.3
WY	3.9	4.0	13.3	14.4	8.3
US ³	9,144	8,990	43,069	42,701	-0.9

¹ Includes dry cows, excludes heifers not yet fresh.

² Excludes milk sucked by calves.

³ May not add due to rounding.

**Milk Cows and Production: By State and United States,
Preliminary April-June, 2003-2004**

State	Apr-Jun Milk Cows ¹		Apr-Jun Milk Production ²		Change From 2003
	2003	2004	2003	2004	
	<i>1,000 Head</i>	<i>1,000 Head</i>	<i>Million Pounds</i>	<i>Million Pounds</i>	<i>Percent</i>
AL	18	17	69	66	-4.3
AK	1.3	1.2	4.5	3.8	-15.6
AZ	155	155	931	945	1.5
AR	29	27	97	86	-11.3
CA	1,685	1,720	9,097	9,247	1.6
CO	100	102	545	557	2.2
CT	22	21	106	101	-4.7
DE	8.5	7.5	36.0	33.0	-8.3
FL	143	139	585	611	4.4
GA	85	84	389	382	-1.8
HI	6.4	6.2	24.3	22.2	-8.6
ID	401	418	2,212	2,272	2.7
IL	110	108	529	512	-3.2
IN	148	148	739	736	-0.4
IA	203	194	978	918	-6.1
KS	111	113	540	562	4.1
KY	119	110	391	373	-4.6
LA	43	38	143	132	-7.7
ME	35	34	161	157	-2.5
MD	78	75	318	305	-4.1
MA	20	17	89	76	-14.6
MI	301	299	1,589	1,582	-0.4
MN	475	462	2,136	2,084	-2.4
MS	31	27	118	104	-11.9
MO	130	124	506	496	-2.0
MT	18	18	87	88	1.1
NE	65	60	294	265	-9.9
NV	26	25	120	124	3.3
NH	16	16	79	78	-1.3
NJ	13	12	57	54	-5.3
NM	315	327	1,730	1,765	2.0
NY	677	656	3,098	3,006	-3.0
NC	61	57	272	259	-4.8
ND	36	34	143	136	-4.9
OH	261	263	1,174	1,180	0.5
OK	82	79	337	329	-2.4
OR	120	120	561	572	2.0
PA	580	558	2,700	2,597	-3.8
RI	1.3	1.2	5.9	5.2	-11.9
SC	19	17	87	76	-12.6
SD	83	80	339	338	-0.3
TN	80	76	325	310	-4.6
TX	320	318	1,494	1,587	6.2
UT	92	87	413	409	-1.0
VT	149	144	679	656	-3.4
VA	115	102	457	432	-5.5
WA	245	240	1,418	1,387	-2.2
WV	15	13	58	52	-10.3
WI	1,258	1,243	5,691	5,618	-1.3
WY	3.8	4.1	13.3	15.6	17.3
US ³	9,109	8,997	43,965	43,702	-0.6

¹ Includes dry cows, excludes heifers not yet fresh.

² Excludes milk sucked by calves.

³ May not add due to rounding.

Reliability Statement

Survey Procedures: Primary data used to determine these estimates were obtained from a sample of producers. Individual States maintain a list of all known milk producers and information on the size of their herd. States use all known sources of producers to ensure that their lists are as complete as possible. Generally, all large producers and a sample of small producers are included in the survey. Questionnaires are mailed to producers near the end of the month to obtain data for the first day of the month. Additional reports are obtained by telephone, as needed, to supplement the mail response. Where feasible, States utilize state and federal administrative data, rather than conduct a monthly or quarterly survey, to estimate milk production. This eliminates duplication of data gathering by different government agencies. Indications of milk cow inventory are also obtained in the January and July Cattle Surveys.

Estimation Procedures: State offices prepare these estimates by using a combination of survey indications, historic trends, and any available administrative data. Individual State estimates are reviewed by the Agricultural Statistics Board for reasonableness.

Revision Policy: Milk production, rate per cow, and number of cows are subject to revision the following month for monthly States or the following quarter for the quarterly States. Normally, Federal Market Order sales are the main basis for revisions. However, data for all orders are not available in time for this revision. Estimates are again subject to revisions in February each year based on additional administrative data. In the event that additional changes are necessary, a third revision is possible in February the following year. Estimates are again reviewed after data from the five-year Census of Agriculture are available. No revisions are made after that date.

Reliability: Since all operations with dairy animals are not included in the sample, survey estimates are subject to sampling variability. Survey results are also subject to non-sampling errors such as omissions, duplications, and mistakes in reporting, recording, and processing the data. The effects of these errors cannot be measured directly. They are minimized through rigid quality controls in the data collection process and through a careful review of all reported data for consistency and reasonableness.

To assist users in evaluating the reliability of the estimates in this report, the "Root Mean Square Error" is shown for selected items on the next page. The "Root Mean Square Error" is a statistical measure based on past performance and is computed using the differences between first and final estimates. The "Root Mean Square Error" for milk cow inventory estimates over the past 10 April-June quarters is 0.5 percent. This means that chances are 2 out of 3 that the final April-June estimate will not be above or below the current estimate of 9.00 million head by more than 0.5 percent. Chances are 9 out of 10 that the difference will not exceed 1.0 percent.

Reliability of April-June Milk Estimates ¹

Item	Root Mean Square Error	90% Confidence Level		Difference Between First and Latest Estimates			Quarters	
				Average	Smallest	Largest	First Above Latest	First Below Latest
				<i>Million Pounds</i>	<i>Million Pounds</i>	<i>Million Pounds</i>	<i>Number</i>	<i>Number</i>
Milk Production	<i>Percent</i> 0.3	<i>Percent</i> 0.6	<i>Million Pounds</i> 262	<i>Million Pounds</i> 96	<i>Million Pounds</i> 3	<i>Million Pounds</i> 264	<i>Number</i> 6	<i>Number</i> 4
All Milk Cows	<i>Percent</i> 0.5	<i>Percent</i> 1.0	<i>1,000 Head</i> 90	<i>1,000 Head</i> 28	<i>1,000 Head</i> 0	<i>1,000 Head</i> 145	<i>Number</i> 6	<i>Number</i> 3

¹ Based on records for the past 10 April-June quarters.

ACCESS TO REPORTS!!

For your convenience, there are several ways to obtain NASS reports, data products, and services:

INTERNET ACCESS

All NASS reports are available free of charge on the worldwide Internet. For access, connect to the Internet and go to the NASS Home Page at: www.usda.gov/nass/. Select "Today's Reports" or Publications and then Reports Calendar or Publications and then Search, by Title or Subject.

E-MAIL SUBSCRIPTION

All NASS reports are available by subscription free of charge direct to your e-mail address. Starting with the NASS Home Page at www.usda.gov/nass/, click on **Publications**, then click on the **Subscribe by E-mail** button which takes you to the page describing e-mail delivery of reports. Finally, click on **Go to the Subscription Page** and follow the instructions.

PRINTED REPORTS OR DATA PRODUCTS

CALL OUR TOLL-FREE ORDER DESK: 800-999-6779 (U.S. and Canada)
Other areas, please call 703-605-6220 FAX: 703-605-6900
(Visa, MasterCard, check, or money order acceptable for payment.)

ASSISTANCE

For **assistance** with general agricultural statistics or further information about NASS or its products or services, contact the **Agricultural Statistics Hotline** at **800-727-9540**, 7:30 a.m. to 4:00 p.m. ET, or e-mail: nass@nass.usda.gov.

The United States Department of Agriculture (USDA) prohibits discrimination in all its programs on the basis of race, color, national origin, gender, religion, age, disability, political beliefs, sexual orientation, and marital or family status. (Not all prohibited bases apply to all programs.) Persons with disabilities who require alternative means for communication of program information (braille, large print, audiotape, etc.) should contact the USDA's TARGET Center at 202-720-2600 (voice and TDD).

To file a complaint of discrimination, write USDA, Director, Office of Civil Rights, Room 326-W, Whitten Building, 1400 Independence Avenue, SW, Washington, D.C., 20250-9410, or call 202-720-5964 (voice or TDD). USDA is an equal opportunity provider and employer.