

Released October 15, 2004, by the National Agricultural Statistics Service (NASS), Agricultural Statistics Board, U.S. Department of Agriculture. For information on *Milk Production* call Ty Kalas at 202-690-3236, office hours 7:30 a.m. to 4:00 p.m. ET.

September Milk Production Up 1.3 Percent

Milk production in the 20 major States during September totaled 11.9 billion pounds, up 1.3 percent from September 2003. August revised production, at 12.4 billion pounds, was up 1.4 percent from August 2003. The August revision represented a decrease of 11 million pounds or 0.1 percent from last month's preliminary production estimate.

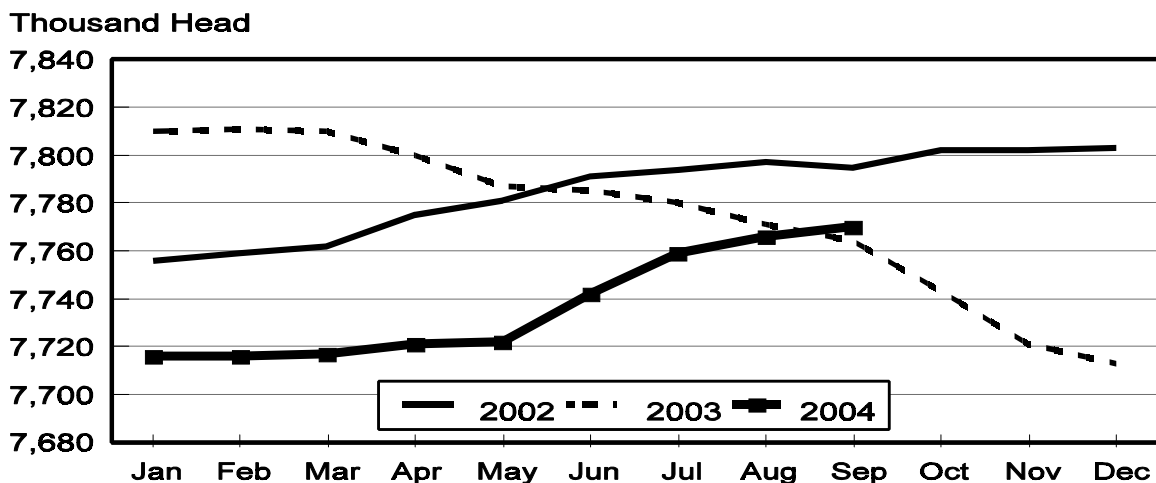
Production per cow in the 20 major States averaged 1,529 pounds for September, 18 pounds above September 2003.

The number of milk cows on farms in the 20 major States was 7.77 million head, 6,000 head more than September 2003, and 4,000 head more than August 2004.

July-September Milk Production Up 1.1 Percent

Milk production in the U.S. during the July-September quarter totaled 42.2 billion pounds, up 1.1 percent from the July-September quarter last year. The average number of milk cows in the U.S. during the quarter was 9.03 million head, 40,000 head less than the same period last year.

Monthly Milk Cows 20 States



Milk Cows and Production: By Quarter, United States, 2003-2004¹

Quarter	Milk Cows ²		Milk Per Cow ³		Milk Production ³		
	2003	2004	2003	2004	2003	2004	Change From 2003
	<i>1,000 Head</i>	<i>1,000 Head</i>	<i>Pounds</i>	<i>Pounds</i>	<i>Million Pounds</i>	<i>Million Pounds</i>	<i>Percent</i>
Jan-Mar	9,144	8,990	4,710	4,750	43,069	42,701	-0.9
Apr-Jun	9,109	8,998	4,827	4,858	43,965	43,712	-0.6
Jul-Sep	9,073	9,033	4,601	4,671	41,746	42,194	1.1
Oct-Dec	9,011		4,609		41,532		
Annual	9,084		18,749		170,312		

¹ May not add due to rounding.

² Includes dry cows, excludes heifers not yet fresh.

³ Excludes milk sucked by calves.

Milk Cows and Production: By Month, 20 Selected States, 2003-2004¹

	Milk Cows ²		Milk Per Cow ³		Milk Production ³		
	2003	2004	2003	2004	2003	2004	Change From 2003
	<i>1,000 Head</i>	<i>1,000 Head</i>	<i>Pounds</i>	<i>Pounds</i>	<i>Million Pounds</i>	<i>Million Pounds</i>	<i>Percent</i>
Jan	7,810	7,716	1,615	1,619	12,616	12,491	-1.0
Feb	7,811	7,716	1,489	1,528	11,628	11,787	1.4
Mar	7,810	7,717	1,666	1,658	13,014	12,798	-1.7
Apr	7,800	7,721	1,627	1,630	12,693	12,588	-0.8
May	7,787	7,722	1,671	1,684	13,013	13,007	
Jun	7,785	7,742	1,596	1,603	12,428	12,410	-0.1
Jul	7,780	7,759	1,597	1,616	12,421	12,541	1.0
Aug	7,771	7,766	1,571	1,594	12,207	12,376	1.4
Sep	7,764	7,770	1,511	1,529	11,731	11,879	1.3
Oct	7,743		1,561		12,083		
Nov	7,721		1,517		11,709		
Dec	7,713		1,596		12,313		
Annual	7,775		19,017		147,856		

¹ 2004 revised.

² Includes dry cows, excludes heifers not yet fresh.

³ Excludes milk sucked by calves.

Estimated Milk Cows and Production: By Month, United States, 2003- 2004¹

Month	Milk Cows ²		Milk Per Cow ³		Milk Production ³		
	2003	2004	2003	2004	2003	2004	Change From 2003
	<i>1,000 Head</i>	<i>1,000 Head</i>	<i>Pounds</i>	<i>Pounds</i>	<i>Million Pounds</i>	<i>Million Pounds</i>	<i>Percent</i>
Jan	9,147	8,994	1,594	1,600	14,584	14,387	-1.4
Feb	9,145	8,989	1,470	1,510	13,441	13,575	1.0
Mar	9,141	8,987	1,646	1,640	15,044	14,739	-2.0
Apr	9,125	8,989	1,604	1,611	14,634	14,479	-1.1
May	9,104	8,990	1,648	1,664	15,003	14,961	-0.3
Jun	9,097	9,014	1,575	1,583	14,328	14,272	-0.4
Jul	9,087	9,026	1,570	1,593	14,263	14,381	0.8
Aug	9,072	9,034	1,545	1,571	14,015	14,192	1.3
Sep	9,061	9,038	1,486	1,507	13,468	13,621	1.1
Oct	9,034		1,538		13,898		
Nov	9,005		1,496		13,470		
Dec	8,994		1,575		14,164		
Annual	9,084		18,749		170,312		

¹ 2004 revised.

² Includes dry cows, excludes heifers not yet fresh.

³ Excludes milk sucked by calves.

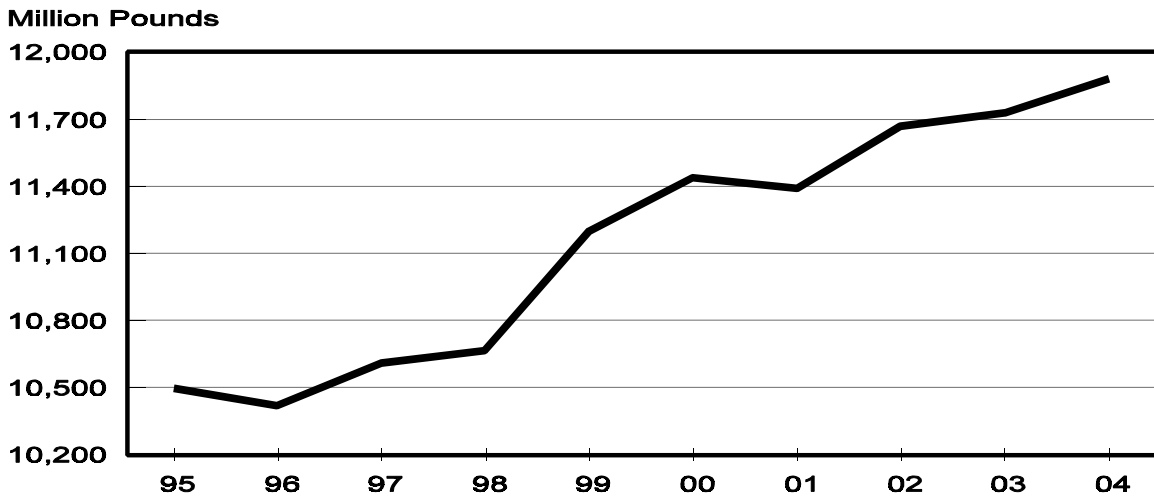
Milk Cows and Production: By State, September 2003-2004

State	Milk Cows ¹		Milk Per Cow ²		Milk Production ²		
	2003	2004	2003	2004	2003	2004	Change From 2003
	<i>1,000 Head</i>	<i>1,000 Head</i>	<i>Pounds</i>	<i>Pounds</i>	<i>Million Pounds</i>	<i>Million Pounds</i>	<i>Percent</i>
AZ	155	165	1,605	1,675	249	276	10.8
CA	1,695	1,737	1,670	1,710	2,831	2,970	4.9
FL	139	137	1,020	1,115	142	153	7.7
ID	413	431	1,780	1,780	735	767	4.4
IL	109	107	1,420	1,440	155	154	-0.6
IN	155	150	1,575	1,540	244	231	-5.3
IA	200	190	1,490	1,480	298	281	-5.7
KY	111	109	975	1,000	108	109	0.9
MI	304	303	1,755	1,685	534	511	-4.3
MN	470	465	1,355	1,365	637	635	-0.3
MO	127	121	1,090	1,150	138	139	0.7
NM	318	330	1,705	1,670	542	551	1.7
NY	668	654	1,430	1,420	955	929	-2.7
OH	259	266	1,380	1,380	357	367	2.8
PA	566	562	1,415	1,415	801	795	-0.7
TX	320	320	1,305	1,405	418	450	7.7
VT	147	145	1,430	1,430	210	207	-1.4
VA	111	104	1,175	1,290	130	134	3.1
WA	244	235	1,865	1,855	455	436	-4.2
WI	1,253	1,239	1,430	1,440	1,792	1,784	-0.4
20-State Total	7,764	7,770	1,511	1,529	11,731	11,879	1.3

¹ Includes dry cows, excludes heifers not yet fresh.

² Excludes milk sucked by calves.

**September Milk Production, 1995-2004
20 States**



Milk Cows and Production: By State, August 2003-2004 ¹

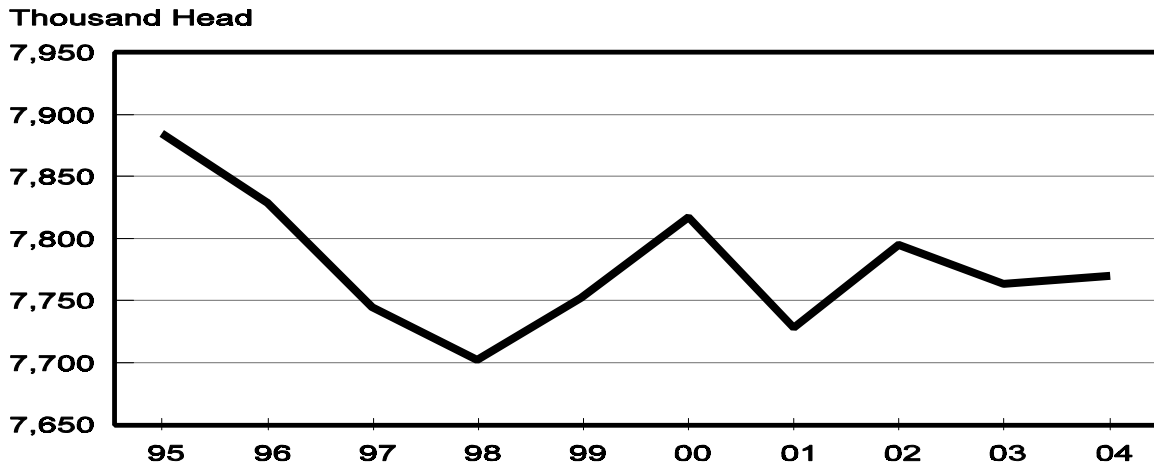
State	Milk Cows ²		Milk per Cow ³		Milk Production ³		
	2003	2004	2003	2004	2003	2004	Change From 2003
	<i>1,000 Head</i>	<i>1,000 Head</i>	<i>Pounds</i>	<i>Pounds</i>	<i>Million Pounds</i>	<i>Million Pounds</i>	<i>Percent</i>
AZ	155	163	1,610	1,740	250	284	13.6
CA	1,693	1,733	1,755	1,775	2,971	3,076	3.5
FL	140	138	1,120	1,225	157	169	7.6
ID	411	431	1,860	1,850	764	797	4.3
IL	110	107	1,480	1,490	163	159	-2.5
IN	152	149	1,610	1,610	245	240	-2.0
IA	200	190	1,540	1,545	308	294	-4.5
KY	112	110	975	1,045	109	115	5.5
MI	304	303	1,805	1,755	549	532	-3.1
MN	470	465	1,420	1,440	667	670	0.4
MO	128	121	1,125	1,210	144	146	1.4
NM	317	330	1,750	1,740	555	574	3.4
NY	671	654	1,475	1,500	990	981	-0.9
OH	260	266	1,420	1,440	369	383	3.8
PA	571	560	1,480	1,475	845	826	-2.2
TX	320	320	1,310	1,465	419	469	11.9
VT	147	145	1,470	1,495	216	217	0.5
VA	112	104	1,190	1,335	133	139	4.5
WA	244	237	1,960	1,905	478	451	-5.6
WI	1,254	1,240	1,495	1,495	1,875	1,854	-1.1
20-State Total	7,771	7,766	1,571	1,594	12,207	12,376	1.4

¹ 2004 revised.

² Includes dry cows, excludes heifers not yet fresh.

³ Excludes milk sucked by calves.

**September Milk Cows, 1995-2004
20 States**



**Milk Cows and Production: By State and United States,
Revised April-June, 2003-2004**

State	Apr-Jun Milk Cows ¹		Apr-Jun Milk Production ²		Change From 2003
	2003	2004	2003	2004	
	<i>1,000 Head</i>	<i>1,000 Head</i>	<i>Million Pounds</i>	<i>Million Pounds</i>	<i>Percent</i>
AL	18	17	69	66	-4.3
AK	1.3	1.2	4.5	3.8	-15.6
AZ	155	155	931	945	1.5
AR	29	27	97	86	-11.3
CA	1,685	1,720	9,097	9,246	1.6
CO	100	102	545	551	1.1
CT	22	21	106	101	-4.7
DE	8.5	7.5	36.0	33.0	-8.3
FL	143	139	585	610	4.3
GA	85	84	389	382	-1.8
HI	6.4	6.2	24.3	22.2	-8.6
ID	401	418	2,212	2,264	2.4
IL	110	108	529	512	-3.2
IN	148	148	739	736	-0.4
IA	203	194	978	922	-5.7
KS	111	113	540	569	5.4
KY	119	110	391	375	-4.1
LA	43	38	143	132	-7.7
ME	35	34	161	157	-2.5
MD	78	75	318	300	-5.7
MA	20	17	89	76	-14.6
MI	301	299	1,589	1,587	-0.1
MN	475	462	2,136	2,084	-2.4
MS	31	27	118	104	-11.9
MO	130	124	506	496	-2.0
MT	18	18	87	88	1.1
NE	65	60	294	266	-9.5
NV	26	25	120	124	3.3
NH	16	16	79	78	-1.3
NJ	13	12	57	52	-8.8
NM	315	327	1,730	1,765	2.0
NY	677	656	3,098	2,999	-3.2
NC	61	57	272	259	-4.8
ND	36	34	143	136	-4.9
OH	261	263	1,174	1,184	0.9
OK	82	79	337	329	-2.4
OR	120	120	561	581	3.6
PA	580	558	2,700	2,597	-3.8
RI	1.3	1.2	5.9	5.2	-11.9
SC	19	17	87	76	-12.6
SD	83	81	339	343	1.2
TN	80	76	325	310	-4.6
TX	320	318	1,494	1,587	6.2
UT	92	87	413	409	-1.0
VT	149	144	679	657	-3.2
VA	115	102	457	434	-5.0
WA	245	240	1,418	1,387	-2.2
WV	15	13	58	52	-10.3
WI	1,258	1,243	5,691	5,618	-1.3
WY	3.8	4.1	13.3	16.0	20.3
US ³	9,109	8,998	43,965	43,712	-0.6

¹ Includes dry cows, excludes heifers not yet fresh.

² Excludes milk sucked by calves.

³ May not add due to rounding.

**Milk Cows and Production: By State and United States,
Preliminary July-September, 2003-2004**

State	Jul-Sep Milk Cows ¹		Jul-Sep Milk Production ²		Change From 2003
	2003	2004	2003	2004	
	<i>1,000 Head</i>	<i>1,000 Head</i>	<i>Million Pounds</i>	<i>Million Pounds</i>	<i>Percent</i>
AL	18	17	53	52	-1.9
AK	1.2	1.2	4.4	3.9	-11.4
AZ	155	162	770	848	10.1
AR	28	26	79	73	-7.6
CA	1,693	1,733	8,768	9,124	4.1
CO	100	103	545	546	0.2
CT	22	21	99	95	-4.0
DE	8.0	7.0	31.0	28.8	-7.1
FL	140	138	470	508	8.1
GA	85	84	319	319	
HI	6.5	5.9	22.6	19.6	-13.3
ID	411	430	2,266	2,358	4.1
IL	110	107	482	476	-1.2
IN	152	150	730	717	-1.8
IA	200	191	924	876	-5.2
KS	110	115	505	555	9.9
KY	113	110	333	341	2.4
LA	42	37	109	103	-5.5
ME	35	34	157	156	-0.6
MD	77	73	294	282	-4.1
MA	18	17	79	74	-6.3
MI	304	302	1,639	1,580	-3.6
MN	472	465	1,995	1,984	-0.6
MS	30	27	87	80	-8.0
MO	128	121	430	436	1.4
MT	18	18	87	89	2.3
NE	63	61	268	256	-4.5
NV	26	25	123	122	-0.8
NH	16	16	74	75	1.4
NJ	12	12	52	49	-5.8
NM	317	330	1,664	1,709	2.7
NY	671	655	2,965	2,907	-2.0
NC	60	56	243	241	-0.8
ND	35	34	137	134	-2.2
OH	260	266	1,103	1,138	3.2
OK	81	77	319	307	-3.8
OR	120	120	555	574	3.4
PA	570	560	2,507	2,465	-1.7
RI	1.3	1.1	5.3	4.6	-13.2
SC	18	17	64	63	-1.6
SD	82	81	332	341	2.7
TN	78	76	270	270	
TX	320	320	1,283	1,412	10.1
UT	90	88	405	418	3.2
VT	147	145	649	645	-0.6
VA	112	104	401	415	3.5
WA	244	237	1,412	1,353	-4.2
WV	15	13	56	51	-8.9
WI	1,254	1,240	5,568	5,504	-1.1
WY	3.7	4.2	13.0	16.0	23.1
US ³	9,073	9,033	41,746	42,194	1.1

¹ Includes dry cows, excludes heifers not yet fresh.

² Excludes milk sucked by calves.

³ May not add due to rounding.

Reliability Statement

Survey Procedures: Primary data used to determine these estimates were obtained from a sample of producers. Individual States maintain a list of all known milk producers and information on the size of their herd. States use all known sources of producers to ensure that their lists are as complete as possible. Generally, all large producers and a sample of small producers are included in the survey. Questionnaires are mailed to producers near the end of the month to obtain data for the first day of the month. Additional reports are obtained by telephone, as needed, to supplement the mail response. Where feasible, States utilize state and federal administrative data, rather than conduct a monthly or quarterly survey, to estimate milk production. This eliminates duplication of data gathering by different government agencies. Indications of milk cow inventory are also obtained in the January and July Cattle Surveys.

Estimation Procedures: State offices prepare these estimates by using a combination of survey indications, historic trends, and any available administrative data. Individual State estimates are reviewed by the Agricultural Statistics Board for reasonableness.

Revision Policy: Milk production, rate per cow, and number of cows are subject to revision the following month for monthly States or the following quarter for the quarterly States. Normally, Federal Market Order sales are the main basis for revisions. However, data for all orders are not available in time for this revision. Estimates are again subject to revisions in February each year based on additional administrative data. In the event that additional changes are necessary, a third revision is possible in February the following year. Estimates are again reviewed after data from the five-year Census of Agriculture are available. No revisions are made after that date.

Reliability: Since all operations with dairy animals are not included in the sample, survey estimates are subject to sampling variability. Survey results are also subject to non-sampling errors such as omissions, duplications, and mistakes in reporting, recording, and processing the data. The effects of these errors cannot be measured directly. They are minimized through rigid quality controls in the data collection process and through a careful review of all reported data for consistency and reasonableness.

To assist users in evaluating the reliability of the estimates in this report, the "Root Mean Square Error" is shown for selected items on the next page. The "Root Mean Square Error" is a statistical measure based on past performance and is computed using the differences between first and final estimates. The "Root Mean Square Error" for milk cow inventory estimates over the past 10 July-September quarters is 0.6 percent. This means that chances are 2 out of 3 that the final July-September estimate will not be above or below the current estimate of 9.03 million head by more than 0.6 percent. Chances are 9 out of 10 that the difference will not exceed 1.1 percent.

Reliability of July-September Milk Estimates ¹

Item	Root Mean Square Error	90% Confidence Level		Difference Between First and Latest Estimates			Quarters	
				Average	Smallest	Largest	First Above Latest	First Below Latest
Milk Production	<i>Percent</i> 0.6	<i>Percent</i> 1.1	<i>Million Pounds</i> 464	<i>Million Pounds</i> 209	<i>Million Pounds</i> 68	<i>Million Pounds</i> 362	<i>Number</i> 9	<i>Number</i> 1
All Milk Cows	<i>Percent</i> 0.6	<i>Percent</i> 1.1	<i>1,000 Head</i> 99	<i>1,000 Head</i> 36	<i>1,000 Head</i> 2	<i>1,000 Head</i> 148	<i>Number</i> 7	<i>Number</i> 3

¹ Based on records for the past 10 July-September quarters.

ACCESS TO REPORTS!!

For your convenience, there are several ways to obtain NASS reports, data products, and services:

INTERNET ACCESS

All NASS reports are available free of charge on the worldwide Internet. For access, connect to the Internet and go to the NASS Home Page at www.usda.gov/nass/. Select "Today's Reports" or Publications and then Reports Calendar or Publications and then Search, by Title or Subject.

E-MAIL SUBSCRIPTION

All NASS reports are available by subscription free of charge direct to your e-mail address. Starting with the NASS Home Page at www.usda.gov/nass/, click on **Publications**, then click on the **Subscribe by E-mail** button which takes you to the page describing e-mail delivery of reports. Finally, click on **Go to the Subscription Page** and follow the instructions.

PRINTED REPORTS OR DATA PRODUCTS

CALL OUR TOLL-FREE ORDER DESK: 800-999-6779 (U.S. and Canada)
Other areas, please call 703-605-6220 FAX: 703-605-6900
(Visa, MasterCard, check, or money order acceptable for payment.)

ASSISTANCE

For **assistance** with general agricultural statistics or further information about NASS or its products or services, contact the **Agricultural Statistics Hotline** at **800-727-9540**, 7:30 a.m. to 4:00 p.m. ET, or e-mail: **nass@nass.usda.gov**.

The United States Department of Agriculture (USDA) prohibits discrimination in all its programs on the basis of race, color, national origin, gender, religion, age, disability, political beliefs, sexual orientation, and marital or family status. (Not all prohibited bases apply to all programs.) Persons with disabilities who require alternative means for communication of program information (braille, large print, audiotape, etc.) should contact the USDA's TARGET Center at 202-720-2600 (voice and TDD).

To file a complaint of discrimination, write USDA, Director, Office of Civil Rights, Room 326-W, Whitten Building, 1400 Independence Avenue, SW, Washington, D.C., 20250-9410, or call 202-720-5964 (voice or TDD). USDA is an equal opportunity provider and employer.