

Released November 16, 2004, by the National Agricultural Statistics Service (NASS), Agricultural Statistics Board, U.S. Department of Agriculture. For information on *Milk Production* call Ty Kalas at 202-690-3236, office hours 7:30 a.m. to 4:00 p.m. ET.

## October Milk Production Up 1.3 Percent

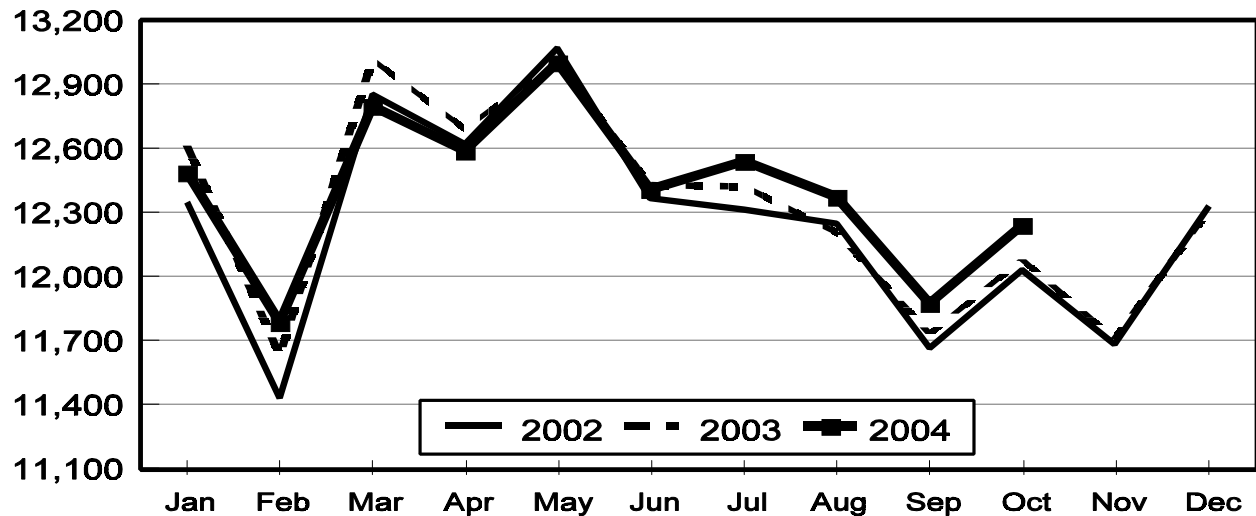
**Milk production** in the 20 major States during October totaled 12.2 billion pounds, up 1.3 percent from October 2003. September revised production, at 11.9 billion pounds, was up 1.3 percent from September 2003. The September revision represented a decrease of 1 million pounds from last month's preliminary production estimate.

**Production per cow** in the 20 major States averaged 1,576 pounds for October, 15 pounds above October 2003.

**The number of milk cows** on farms in the 20 major States was 7.77 million head, 26,000 head more than October 2003, but unchanged from September 2004.

## Monthly Milk Production 20 States

Million Pounds



**Milk Cows and Production: By Quarter, United States, 2003-2004<sup>1</sup>**

Quarter	Milk Cows <sup>2</sup>		Milk Per Cow <sup>3</sup>		Milk Production <sup>3</sup>		
	2003	2004	2003	2004	2003	2004	Change From 2003
	<i>1,000 Head</i>	<i>1,000 Head</i>	<i>Pounds</i>	<i>Pounds</i>	<i>Million Pounds</i>	<i>Million Pounds</i>	<i>Percent</i>
Jan-Mar	9,144	8,990	4,710	4,750	43,069	42,701	-0.9
Apr-Jun	9,109	8,998	4,827	4,858	43,965	43,712	-0.6
Jul-Sep	9,073	9,033	4,601	4,671	41,746	42,193	1.1
Oct-Dec	9,011		4,609		41,532		
Annual	9,084		18,749		170,312		

<sup>1</sup> May not add due to rounding.

<sup>2</sup> Includes dry cows, excludes heifers not yet fresh.

<sup>3</sup> Excludes milk sucked by calves.

**Milk Cows and Production: By Month, 20 Selected States, 2003-2004<sup>1</sup>**

	Milk Cows <sup>2</sup>		Milk Per Cow <sup>3</sup>		Milk Production <sup>3</sup>		
	2003	2004	2003	2004	2003	2004	Change From 2003
	<i>1,000 Head</i>	<i>1,000 Head</i>	<i>Pounds</i>	<i>Pounds</i>	<i>Million Pounds</i>	<i>Million Pounds</i>	<i>Percent</i>
Jan	7,810	7,716	1,615	1,619	12,616	12,491	-1.0
Feb	7,811	7,716	1,489	1,528	11,628	11,787	1.4
Mar	7,810	7,717	1,666	1,658	13,014	12,798	-1.7
Apr	7,800	7,721	1,627	1,630	12,693	12,588	-0.8
May	7,787	7,722	1,671	1,684	13,013	13,007	
Jun	7,785	7,742	1,596	1,603	12,428	12,410	-0.1
Jul	7,780	7,759	1,597	1,616	12,421	12,541	1.0
Aug	7,771	7,766	1,571	1,594	12,207	12,376	1.4
Sep	7,764	7,769	1,511	1,529	11,731	11,878	1.3
Oct	7,743	7,769	1,561	1,576	12,083	12,245	1.3
Nov	7,721		1,517		11,709		
Dec	7,713		1,596		12,313		
Annual	7,775		19,017		147,856		

<sup>1</sup> 2004 revised.

<sup>2</sup> Includes dry cows, excludes heifers not yet fresh.

<sup>3</sup> Excludes milk sucked by calves.

**Estimated Milk Cows and Production: By Month, United States, 2003- 2004<sup>1</sup>**

Month	Milk Cows <sup>2</sup>		Milk Per Cow <sup>3</sup>		Milk Production <sup>3</sup>		
	2003	2004	2003	2004	2003	2004	Change From 2003
	<i>1,000 Head</i>	<i>1,000 Head</i>	<i>Pounds</i>	<i>Pounds</i>	<i>Million Pounds</i>	<i>Million Pounds</i>	<i>Percent</i>
Jan	9,147	8,994	1,594	1,600	14,584	14,387	-1.4
Feb	9,145	8,989	1,470	1,510	13,441	13,575	1.0
Mar	9,141	8,987	1,646	1,640	15,044	14,739	-2.0
Apr	9,125	8,989	1,604	1,611	14,634	14,479	-1.1
May	9,104	8,990	1,648	1,664	15,003	14,961	-0.3
Jun	9,097	9,014	1,575	1,583	14,328	14,272	-0.4
Jul	9,087	9,026	1,570	1,593	14,263	14,381	0.8
Aug	9,072	9,034	1,545	1,571	14,015	14,192	1.3
Sep	9,061	9,038	1,486	1,507	13,468	13,620	1.1
Oct	9,034	9,038	1,538	1,556	13,898	14,067	1.2
Nov	9,005		1,496		13,470		
Dec	8,994		1,575		14,164		
Annual	9,084		18,749		170,312		

<sup>1</sup> 2004 revised.

<sup>2</sup> Includes dry cows, excludes heifers not yet fresh.

<sup>3</sup> Excludes milk sucked by calves.

**Milk Cows and Production: By State, October 2003-2004**

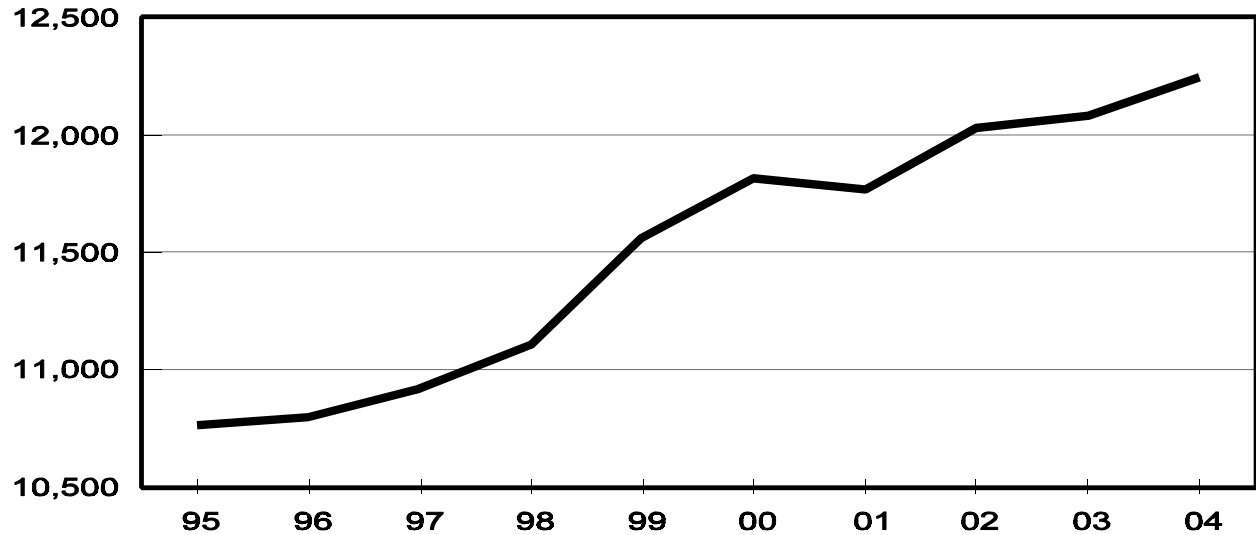
State	Milk Cows <sup>1</sup>		Milk Per Cow <sup>2</sup>		Milk Production <sup>2</sup>		
	2003	2004	2003	2004	2003	2004	Change From 2003
	<i>1,000 Head</i>	<i>1,000 Head</i>	<i>Pounds</i>	<i>Pounds</i>	<i>Million Pounds</i>	<i>Million Pounds</i>	<i>Percent</i>
AZ	155	167	1,735	1,770	269	296	10.0
CA	1,698	1,740	1,720	1,770	2,921	3,080	5.4
FL	140	137	1,105	1,140	155	156	0.6
ID	412	433	1,820	1,800	750	779	3.9
IL	109	106	1,495	1,480	163	157	-3.7
IN	155	152	1,650	1,605	256	244	-4.7
IA	198	190	1,540	1,540	305	293	-3.9
KY	111	109	1,035	1,035	115	113	-1.7
MI	303	305	1,790	1,730	542	528	-2.6
MN	465	465	1,410	1,420	656	660	0.6
MO	126	120	1,200	1,230	151	148	-2.0
NM	318	325	1,745	1,690	555	549	-1.1
NY	665	650	1,455	1,460	968	949	-2.0
OH	259	266	1,420	1,420	368	378	2.7
PA	562	563	1,455	1,465	818	825	0.9
TX	317	320	1,420	1,470	450	470	4.4
VT	147	145	1,450	1,455	213	211	-0.9
VA	109	104	1,245	1,355	136	141	3.7
WA	244	234	1,890	1,890	461	442	-4.1
WI	1,250	1,238	1,465	1,475	1,831	1,826	-0.3
20-State Total	7,743	7,769	1,561	1,576	12,083	12,245	1.3

<sup>1</sup> Includes dry cows, excludes heifers not yet fresh.

<sup>2</sup> Excludes milk sucked by calves.

**October Milk Production, 1995-2004  
20 States**

Million Pounds



**Milk Cows and Production: By State, September 2003-2004<sup>1</sup>**

State	Milk Cows <sup>2</sup>		Milk per Cow <sup>3</sup>		Milk Production <sup>3</sup>		
	2003	2004	2003	2004	2003	2004	Change From 2003
	<i>1,000 Head</i>	<i>1,000 Head</i>	<i>Pounds</i>	<i>Pounds</i>	<i>Million Pounds</i>	<i>Million Pounds</i>	<i>Percent</i>
AZ	155	165	1,605	1,675	249	276	10.8
CA	1,695	1,737	1,670	1,715	2,831	2,979	5.2
FL	139	137	1,020	1,050	142	144	1.4
ID	413	431	1,780	1,780	735	767	4.4
IL	109	107	1,420	1,440	155	154	-0.6
IN	155	150	1,575	1,540	244	231	-5.3
IA	200	190	1,490	1,480	298	281	-5.7
KY	111	109	975	990	108	108	
MI	304	304	1,755	1,690	534	514	-3.7
MN	470	465	1,355	1,365	637	635	-0.3
MO	127	121	1,090	1,150	138	139	0.7
NM	318	328	1,705	1,670	542	548	1.1
NY	668	654	1,430	1,420	955	929	-2.7
OH	259	266	1,380	1,370	357	364	2.0
PA	566	562	1,415	1,415	801	795	-0.7
TX	320	320	1,305	1,405	418	450	7.7
VT	147	145	1,430	1,430	210	207	-1.4
VA	111	104	1,175	1,290	130	134	3.1
WA	244	235	1,865	1,870	455	439	-3.5
WI	1,253	1,239	1,430	1,440	1,792	1,784	-0.4
20-State Total	7,764	7,769	1,511	1,529	11,731	11,878	1.3

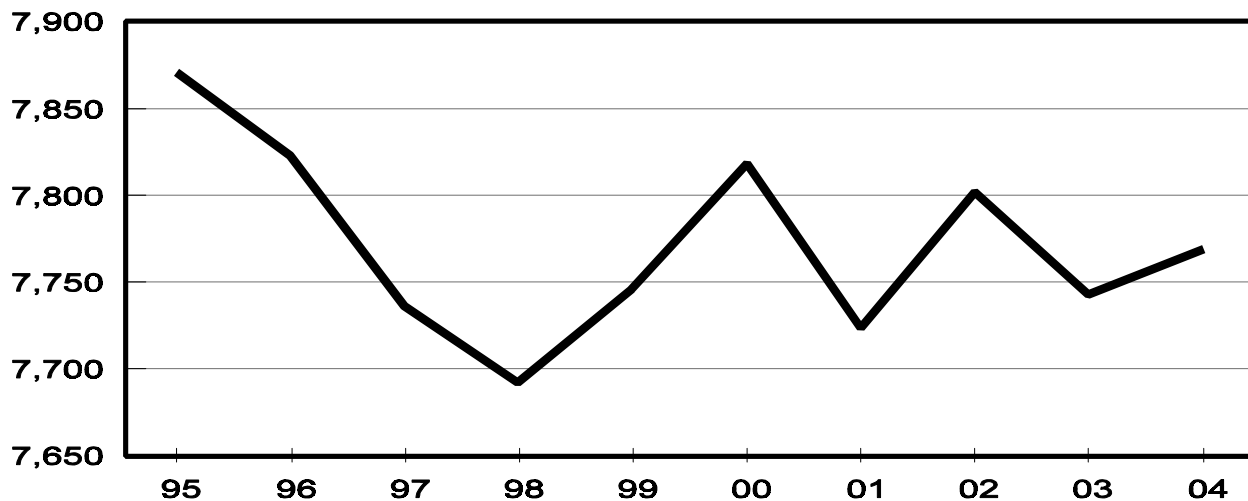
<sup>1</sup> 2004 revised.

<sup>2</sup> Includes dry cows, excludes heifers not yet fresh.

<sup>3</sup> Excludes milk sucked by calves.

**October Milk Cows, 1995-2004  
20 States**

Thousand Head



## Reliability Statement

**Survey Procedures:** Primary data used to determine these estimates were obtained from a sample of producers. Individual States maintain a list of all known milk producers and information on the size of their herd. States use all known sources of producers to ensure that their lists are as complete as possible. Generally, all large producers and a sample of small producers are included in the survey. Questionnaires are mailed to producers near the end of the month to obtain data for the first day of the month. Additional reports are obtained by telephone, as needed, to supplement the mail response. Where feasible, States utilize state and federal administrative data, rather than conduct a monthly or quarterly survey, to estimate milk production. This eliminates duplication of data gathering by different government agencies. Indications of milk cow inventory are also obtained in the January and July Cattle Surveys.

**Estimation Procedures:** State offices prepare these estimates by using a combination of survey indications, historic trends, and any available administrative data. Individual State estimates are reviewed by the Agricultural Statistics Board for reasonableness.

**Revision Policy:** Milk production, rate per cow, and number of cows are subject to revision the following month for monthly States or the following quarter for the quarterly States. Normally, Federal Market Order sales are the main basis for revisions. However, data for all orders are not available in time for this revision. Estimates are again subject to revisions in February each year based on additional administrative data. In the event that additional changes are necessary, a third revision is possible in February the following year. Estimates are again reviewed after data from the five-year Census of Agriculture are available. No revisions are made after that date.

**Reliability:** Since all operations with dairy animals are not included in the sample, survey estimates are subject to sampling variability. Survey results are also subject to non-sampling errors such as omissions, duplications, and mistakes in reporting, recording, and processing the data. The effects of these errors cannot be measured directly. They are minimized through rigid quality controls in the data collection process and through a careful review of all reported data for consistency and reasonableness.

To assist users in evaluating the reliability of the estimates in this report, the "Root Mean Square Error" is shown for selected items on the next page. The "Root Mean Square Error" is a statistical measure based on past performance and is computed using the differences between first and final estimates. The "Root Mean Square Error" for milk cow inventory estimates over the past 10 July-September quarters is 0.6 percent. This means that chances are 2 out of 3 that the final July-September estimate will not be above or below the current estimate of 9.03 million head by more than 0.6 percent. Chances are 9 out of 10 that the difference will not exceed 1.1 percent.

**Reliability of July-September Milk Estimates <sup>1</sup>**

Item	Root Mean Square Error	90% Confidence Level		Difference Between First and Latest Estimates			Quarters	
				Average	Smallest	Largest	First Above Latest	First Below Latest
				<i>Million Pounds</i>	<i>Million Pounds</i>	<i>Million Pounds</i>	<i>Number</i>	<i>Number</i>
Milk Production	<i>Percent</i>	<i>Percent</i>	<i>Million Pounds</i>	<i>Million Pounds</i>	<i>Million Pounds</i>	<i>Million Pounds</i>	<i>Number</i>	<i>Number</i>
	0.6	1.1	464	209	68	362	9	1
All Milk Cows	<i>Percent</i>	<i>Percent</i>	<i>1,000 Head</i>	<i>1,000 Head</i>	<i>1,000 Head</i>	<i>1,000 Head</i>	<i>Number</i>	<i>Number</i>
	0.6	1.1	99	36	2	148	7	3

<sup>1</sup> Based on records for the past 10 July-September quarters.

## ACCESS TO REPORTS!!

---

For your convenience, there are several ways to obtain NASS reports, data products, and services:

### INTERNET ACCESS

All NASS reports are available free of charge on the worldwide Internet. For access, connect to the Internet and go to the NASS Home Page at: [www.usda.gov/nass/](http://www.usda.gov/nass/). Select "Today's Reports" or Publications and then Reports Calendar or Publications and then Search, by Title or Subject.

### E-MAIL SUBSCRIPTION

All NASS reports are available by subscription free of charge direct to your e-mail address. Starting with the NASS Home Page at [www.usda.gov/nass/](http://www.usda.gov/nass/), click on **Publications**, then click on the **Subscribe by E-mail** button which takes you to the page describing e-mail delivery of reports. Finally, click on [Go to the Subscription Page](#) and follow the instructions.

-----

### PRINTED REPORTS OR DATA PRODUCTS

**CALL OUR TOLL-FREE ORDER DESK: 800-999-6779 (U.S. and Canada)**  
**Other areas, please call 703-605-6220      FAX: 703-605-6900**  
**(Visa, MasterCard, check, or money order acceptable for payment.)**

-----

### ASSISTANCE

For **assistance** with general agricultural statistics or further information about NASS or its products or services, contact the **Agricultural Statistics Hotline** at **800-727-9540**, 7:30 a.m. to 4:00 p.m. ET, or e-mail: [nass@nass.usda.gov](mailto:nass@nass.usda.gov).

---

The United States Department of Agriculture (USDA) prohibits discrimination in all its programs on the basis of race, color, national origin, gender, religion, age, disability, political beliefs, sexual orientation, and marital or family status. (Not all prohibited bases apply to all programs.) Persons with disabilities who require alternative means for communication of program information (braille, large print, audiotape, etc.) should contact the USDA's TARGET Center at 202-720-2600 (voice and TDD).

To file a complaint of discrimination, write USDA, Director, Office of Civil Rights, Room 326-W, Whitten Building, 1400 Independence Avenue, SW, Washington, D.C., 20250-9410, or call 202-720-5964 (voice or TDD). USDA is an equal opportunity provider and employer.