

Released January 18, 2005, by the National Agricultural Statistics Service (NASS), Agricultural Statistics Board, U.S. Department of Agriculture. For information on *Milk Production* call Ty Kalas at 202-690-3236, office hours 7:30 a.m. to 4:00 p.m. ET.

December Milk Production Up 1.0 Percent

Milk production in the 20 major States during December totaled 12.4 billion pounds, up 1.0 percent from December 2003. November revised production, at 11.9 billion pounds, was up 1.2 percent from November 2003. The November revision represented an increase of 5 million pounds from last month's preliminary production estimate.

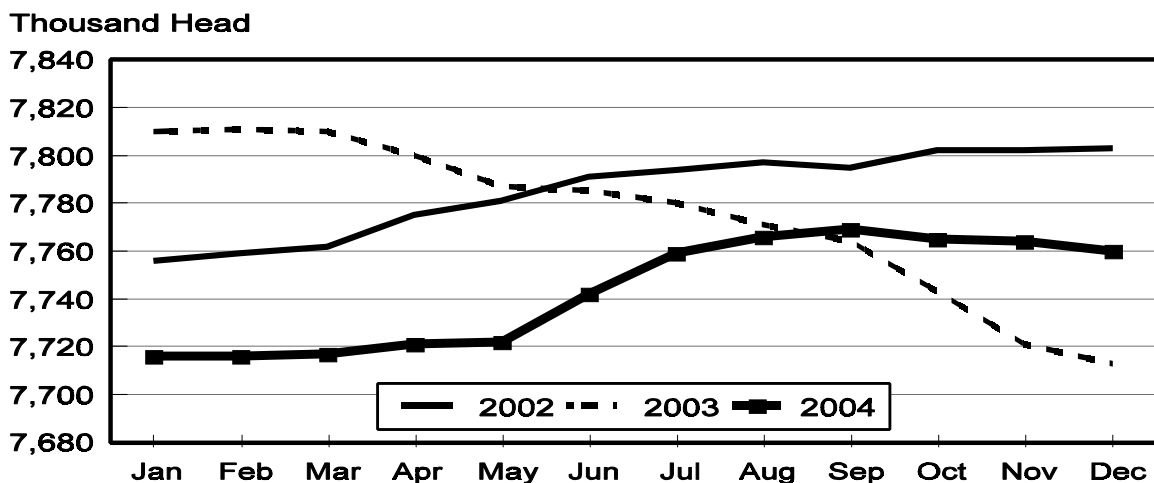
Production per cow in the 20 major States averaged 1,602 pounds for December, 6 pounds above December 2003.

The number of milk cows on farms in the 20 major States was 7.76 million head, 47,000 head more than December 2003, but 4,000 head less than November 2004.

October-December Milk Production Up 0.9 Percent

Milk production in the U.S. during the October-December quarter totaled 41.9 billion pounds, up 0.9 percent from the October-December quarter last year. The average number of milk cows in the U.S. during the quarter was 9.02 million head, 7,000 head more than the same period last year.

Monthly Milk Cows 20 States



Milk Cows and Production: By Quarter, United States, 2003-2004 ¹

Quarter	Milk Cows ²		Milk Per Cow ³		Milk Production ³		
	2003	2004	2003	2004	2003	2004	Change From 2003
	<i>1,000 Head</i>	<i>1,000 Head</i>	<i>Pounds</i>	<i>Pounds</i>	<i>Million Pounds</i>	<i>Million Pounds</i>	<i>Percent</i>
Jan-Mar	9,144	8,990	4,710	4,750	43,069	42,701	-0.9
Apr-Jun	9,109	8,998	4,827	4,858	43,965	43,712	-0.6
Jul-Sep	9,073	9,031	4,601	4,670	41,746	42,174	1.0
Oct-Dec	9,011	9,018	4,609	4,646	41,532	41,895	0.9
Annual	9,084	9,009	18,749	18,924	170,312	170,482	0.1

¹ May not add due to rounding.

² Includes dry cows, excludes heifers not yet fresh.

³ Excludes milk sucked by calves.

Milk Cows and Production: By Month, 20 Selected States, 2003-2004 ¹

Month	Milk Cows ²		Milk Per Cow ³		Milk Production ³		
	2003	2004	2003	2004	2003	2004	Change From 2003
	<i>1,000 Head</i>	<i>1,000 Head</i>	<i>Pounds</i>	<i>Pounds</i>	<i>Million Pounds</i>	<i>Million Pounds</i>	<i>Percent</i>
Jan	7,810	7,716	1,615	1,619	12,616	12,491	-1.0
Feb	7,811	7,716	1,489	1,528	11,628	11,787	1.4
Mar	7,810	7,717	1,666	1,658	13,014	12,798	-1.7
Apr	7,800	7,721	1,627	1,630	12,693	12,588	-0.8
May	7,787	7,722	1,671	1,684	13,013	13,007	
Jun	7,785	7,742	1,596	1,603	12,428	12,410	-0.1
Jul	7,780	7,759	1,597	1,616	12,421	12,541	1.0
Aug	7,771	7,766	1,571	1,594	12,207	12,376	1.4
Sep	7,764	7,769	1,511	1,529	11,731	11,878	1.3
Oct	7,743	7,765	1,561	1,578	12,083	12,254	1.4
Nov	7,721	7,764	1,517	1,526	11,709	11,851	1.2
Dec	7,713	7,760	1,596	1,602	12,313	12,432	1.0
Annual	7,775	7,743	19,017	19,167	147,856	148,413	0.4

¹ 2004 revised.

² Includes dry cows, excludes heifers not yet fresh.

³ Excludes milk sucked by calves.

Estimated Milk Cows and Production: By Month, United States, 2003-2004 ¹

Month	Milk Cows ²		Milk Per Cow ³		Milk Production ³		
	2003	2004	2003	2004	2003	2004	Change From 2003
	<i>1,000 Head</i>	<i>1,000 Head</i>	<i>Pounds</i>	<i>Pounds</i>	<i>Million Pounds</i>	<i>Million Pounds</i>	<i>Percent</i>
Jan	9,147	8,994	1,594	1,600	14,584	14,387	-1.4
Feb	9,145	8,989	1,470	1,510	13,441	13,575	1.0
Mar	9,141	8,987	1,646	1,640	15,044	14,739	-2.0
Apr	9,125	8,989	1,604	1,611	14,634	14,479	-1.1
May	9,104	8,990	1,648	1,664	15,003	14,961	-0.3
Jun	9,097	9,014	1,575	1,583	14,328	14,272	-0.4
Jul	9,087	9,029	1,570	1,592	14,263	14,374	0.8
Aug	9,072	9,033	1,545	1,571	14,015	14,186	1.2
Sep	9,061	9,032	1,486	1,507	13,468	13,614	1.1
Oct	9,034	9,024	1,538	1,557	13,898	14,049	1.1
Nov	9,005	9,020	1,496	1,507	13,470	13,589	0.9
Dec	8,994	9,011	1,575	1,582	14,164	14,257	0.7
Annual	9,084	9,009	18,749	18,924	170,312	170,482	0.1

¹ 2004 revised.

² Includes dry cows, excludes heifers not yet fresh.

³ Excludes milk sucked by calves.

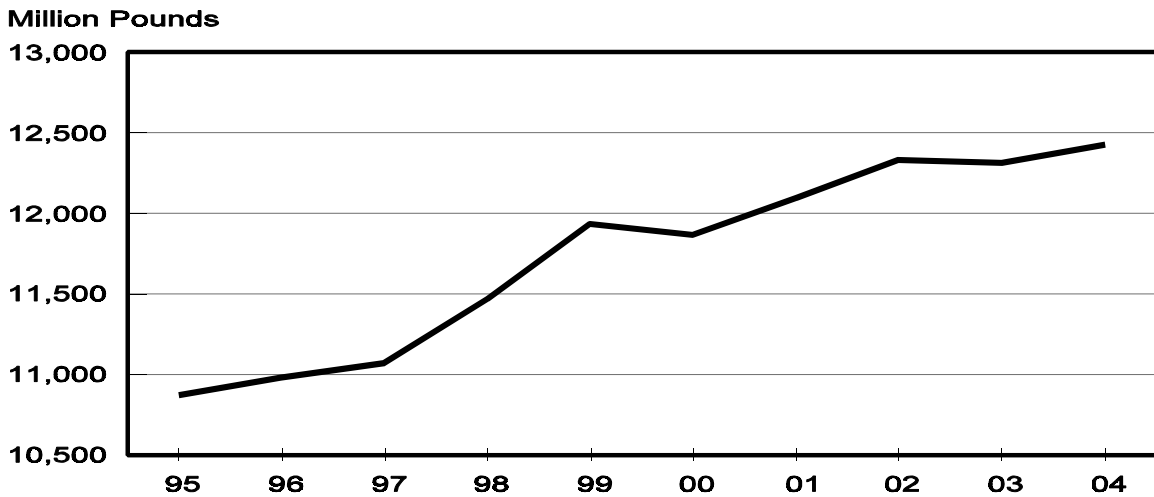
Milk Cows and Production: By State, December 2003-2004

State	Milk Cows ¹		Milk Per Cow ²		Milk Production ²		
	2003	2004	2003	2004	2003	2004	Change From 2003
	<i>1,000 Head</i>	<i>1,000 Head</i>	<i>Pounds</i>	<i>Pounds</i>	<i>Million Pounds</i>	<i>Million Pounds</i>	<i>Percent</i>
AZ	155	166	1,895	1,890	294	314	6.8
CA	1,697	1,741	1,740	1,775	2,953	3,090	4.6
FL	140	138	1,355	1,375	190	190	
ID	412	435	1,800	1,780	742	774	4.3
IL	109	106	1,585	1,540	173	163	-5.8
IN	145	155	1,700	1,620	247	251	1.6
IA	196	188	1,580	1,590	310	299	-3.5
KY	112	110	1,070	1,075	120	118	-1.7
MI	300	307	1,765	1,725	530	530	
MN	465	460	1,485	1,475	691	679	-1.7
MO	124	119	1,250	1,270	155	151	-2.6
NM	324	321	1,730	1,650	561	530	-5.5
NY	657	646	1,480	1,485	972	959	-1.3
OH	258	266	1,440	1,460	372	388	4.3
PA	562	565	1,480	1,490	832	842	1.2
TX	317	319	1,575	1,555	499	496	-0.6
VT	146	143	1,505	1,515	220	217	-1.4
VA	106	104	1,335	1,420	142	148	4.2
WA	241	235	1,900	1,920	458	451	-1.5
WI	1,247	1,236	1,485	1,490	1,852	1,842	-0.5
20-State Total	7,713	7,760	1,596	1,602	12,313	12,432	1.0

¹ Includes dry cows, excludes heifers not yet fresh.

² Excludes milk sucked by calves.

**December Milk Production, 1995-2004
20 States**



Milk Cows and Production: By State, November 2003-2004 ¹

State	Milk Cows ²		Milk per Cow ³		Milk Production ³		
	2003	2004	2003	2004	2003	2004	Change From 2003
	<i>1,000 Head</i>	<i>1,000 Head</i>	<i>Pounds</i>	<i>Pounds</i>	<i>Million Pounds</i>	<i>Million Pounds</i>	<i>Percent</i>
AZ	155	168	1,775	1,760	275	296	7.6
CA	1,694	1,741	1,665	1,700	2,821	2,960	4.9
FL	140	137	1,180	1,250	165	171	3.6
ID	412	434	1,740	1,720	717	746	4.0
IL	109	106	1,485	1,450	162	154	-4.9
IN	151	154	1,620	1,560	245	240	-2.0
IA	197	190	1,515	1,520	298	289	-3.0
KY	112	109	1,025	1,030	115	112	-2.6
MI	300	306	1,675	1,660	503	508	1.0
MN	465	460	1,390	1,390	646	639	-1.1
MO	125	120	1,190	1,215	149	146	-2.0
NM	320	324	1,670	1,605	534	520	-2.6
NY	660	646	1,410	1,410	931	911	-2.1
OH	258	266	1,370	1,390	353	370	4.8
PA	560	563	1,420	1,420	795	799	0.5
TX	317	320	1,440	1,455	456	466	2.2
VT	146	144	1,415	1,415	207	204	-1.4
VA	108	104	1,260	1,360	136	141	3.7
WA	243	235	1,810	1,825	440	429	-2.5
WI	1,249	1,237	1,410	1,415	1,761	1,750	-0.6
20-State Total	7,721	7,764	1,517	1,526	11,709	11,851	1.2

¹ 2004 revised.

² Includes dry cows, excludes heifers not yet fresh.

³ Excludes milk sucked by calves.

**December Milk Cows, 1995-2004
20 States**



**Milk Cows and Production: By State and United States,
Revised July-September, 2003-2004**

State	Jul-Sep Milk Cows ¹		Jul-Sep Milk Production ²		Change From 2003
	2003	2004	2003	2004	
	<i>1,000 Head</i>	<i>1,000 Head</i>	<i>Million Pounds</i>	<i>Million Pounds</i>	<i>Percent</i>
AL	18	17	53	52	-1.9
AK	1.2	1.2	4.4	3.8	-13.6
AZ	155	162	770	848	10.1
AR	28	26	79	72	-8.9
CA	1,693	1,733	8,768	9,133	4.2
CO	100	103	545	553	1.5
CT	22	21	99	95	-4.0
DE	8.0	7.0	31.0	28.8	-7.1
FL	140	138	470	499	6.2
GA	85	84	319	319	
HI	6.5	5.9	22.6	19.6	-13.3
ID	411	430	2,266	2,358	4.1
IL	110	107	482	476	-1.2
IN	152	150	730	717	-1.8
IA	200	191	924	876	-5.2
KS	110	115	505	546	8.1
KY	113	110	333	340	2.1
LA	42	37	109	103	-5.5
ME	35	34	157	156	-0.6
MD	77	73	294	282	-4.1
MA	18	17	79	74	-6.3
MI	304	303	1,639	1,583	-3.4
MN	472	465	1,995	1,984	-0.6
MS	30	27	87	80	-8.0
MO	128	121	430	436	1.4
MT	18	18	87	88	1.1
NE	63	61	268	254	-5.2
NV	26	25	123	122	-0.8
NH	16	16	74	75	1.4
NJ	12	12	52	49	-5.8
NM	317	329	1,664	1,706	2.5
NY	671	655	2,965	2,907	-2.0
NC	60	56	243	241	-0.8
ND	35	34	137	134	-2.2
OH	260	266	1,103	1,135	2.9
OK	81	77	319	307	-3.8
OR	120	120	555	574	3.4
PA	570	560	2,507	2,465	-1.7
RI	1.3	1.1	5.3	4.6	-13.2
SC	18	17	64	63	-1.6
SD	82	80	332	333	0.3
TN	78	75	270	265	-1.9
TX	320	320	1,283	1,412	10.1
UT	90	88	405	418	3.2
VT	147	145	649	645	-0.6
VA	112	104	401	415	3.5
WA	244	237	1,412	1,356	-4.0
WV	15	13	56	51	-8.9
WI	1,254	1,240	5,568	5,504	-1.1
WY	3.7	4.2	13.0	16.0	23.1
US ³	9,073	9,031	41,746	42,174	1.0

¹ Includes dry cows, excludes heifers not yet fresh.

² Excludes milk sucked by calves.

³ May not add due to rounding.

**Milk Cows and Production: By State and United States,
Preliminary October-December, 2003-2004**

State	Oct-Dec Milk Cows ¹		Oct-Dec Milk Production ²		Change From 2003
	2003	2004	2003	2004	
	<i>1,000 Head</i>	<i>1,000 Head</i>	<i>Million Pounds</i>	<i>Million Pounds</i>	<i>Percent</i>
AL	18	17	60	56	-6.7
AK	1.2	1.2	3.5	3.4	-2.9
AZ	155	167	838	906	8.1
AR	28	26	80	73	-8.8
CA	1,696	1,741	8,695	9,130	5.0
CO	99	102	540	553	2.4
CT	21	20	99	95	-4.0
DE	8.0	7.5	32.0	31.5	-1.6
FL	140	137	510	520	2.0
GA	84	84	337	334	-0.9
HI	6.6	5.8	21.1	17.8	-15.6
ID	412	434	2,209	2,301	4.2
IL	109	106	498	474	-4.8
IN	150	154	748	735	-1.7
IA	197	189	913	881	-3.5
KS	110	113	530	540	1.9
KY	112	109	350	343	-2.0
LA	41	36	118	109	-7.6
ME	34	33	151	148	-2.0
MD	77	73	301	288	-4.3
MA	18	17	76	73	-3.9
MI	301	306	1,575	1,566	-0.6
MN	465	460	1,993	1,974	-1.0
MS	29	26	96	87	-9.4
MO	125	120	455	445	-2.2
MT	18	18	86	86	
NE	62	61	270	264	-2.2
NV	26	25	120	121	0.8
NH	16	16	73	75	2.7
NJ	12	12	50	47	-6.0
NM	321	323	1,650	1,599	-3.1
NY	661	647	2,871	2,826	-1.6
NC	59	55	250	242	-3.2
ND	34	33	131	127	-3.1
OH	258	266	1,093	1,136	3.9
OK	81	75	320	297	-7.2
OR	118	120	535	555	3.7
PA	561	564	2,445	2,466	0.9
RI	1.3	1.1	5.0	4.5	-10.0
SC	18	18	72	69	-4.2
SD	80	80	321	335	4.4
TN	77	73	285	270	-5.3
TX	317	320	1,405	1,432	1.9
UT	90	89	398	392	-1.5
VT	146	144	640	632	-1.3
VA	108	104	414	430	3.9
WA	243	235	1,359	1,323	-2.6
WV	14	13	52	49	-5.8
WI	1,249	1,237	5,444	5,418	-0.5
WY	3.9	4.1	14.4	15.6	8.3
US ³	9,011	9,018	41,532	41,895	0.9

¹ Includes dry cows, excludes heifers not yet fresh.

² Excludes milk sucked by calves.

³ May not add due to rounding.

Reliability Statement

Survey Procedures: Primary data used to determine these estimates were obtained from a sample of producers. Individual States maintain a list of all known milk producers and information on the size of their herd. States use all known sources of producers to ensure that their lists are as complete as possible. Generally, all large producers and a sample of small producers are included in the survey. Questionnaires are mailed to producers near the end of the month to obtain data for the first day of the month. Additional reports are obtained by telephone, as needed, to supplement the mail response. Where feasible, States utilize state and federal administrative data, rather than conduct a monthly or quarterly survey, to estimate milk production. This eliminates duplication of data gathering by different government agencies. Indications of milk cow inventory are also obtained in the January and July Cattle Surveys.

Estimation Procedures: State offices prepare these estimates by using a combination of survey indications, historic trends, and any available administrative data. Individual State estimates are reviewed by the Agricultural Statistics Board for reasonableness.

Revision Policy: Milk production, rate per cow, and number of cows are subject to revision the following month for monthly States or the following quarter for the quarterly States. Normally, Federal Market Order sales are the main basis for revisions. However, data for all orders are not available in time for this revision. Estimates are again subject to revisions in February each year based on additional administrative data. In the event that additional changes are necessary, a third revision is possible in February the following year. Estimates are again reviewed after data from the five-year Census of Agriculture are available. No revisions are made after that date.

Reliability: Since all operations with dairy animals are not included in the sample, survey estimates are subject to sampling variability. Survey results are also subject to non-sampling errors such as omissions, duplications, and mistakes in reporting, recording, and processing the data. The effects of these errors cannot be measured directly. They are minimized through rigid quality controls in the data collection process and through a careful review of all reported data for consistency and reasonableness.

To assist users in evaluating the reliability of the estimates in this report, the "Root Mean Square Error" is shown for selected items on the next page. The "Root Mean Square Error" is a statistical measure based on past performance and is computed using the differences between first and final estimates. The "Root Mean Square Error" for milk cow inventory estimates over the past 10 October-December quarters is 0.5 percent. This means that chances are 2 out of 3 that the final October-December estimate will not be above or below the current estimate of 9.02 million head by more than 0.5 percent. Chances are 9 out of 10 that the difference will not exceed 0.9 percent.

Reliability of October-December Milk Estimates ¹

Item	Root Mean Square Error	90% Confidence Level		Difference Between First and Latest Estimates			Quarters	
				Average	Smallest	Largest	First Above Latest	First Below Latest
				<i>Million Pounds</i>	<i>Million Pounds</i>	<i>Million Pounds</i>	<i>Number</i>	<i>Number</i>
Milk Production	<i>Percent</i> 0.4	<i>Percent</i> 0.8	<i>Million Pounds</i> 335	<i>Million Pounds</i> 149	<i>Million Pounds</i> 1	<i>Million Pounds</i> 265	<i>Number</i> 7	<i>Number</i> 3
All Milk Cows	<i>Percent</i> 0.5	<i>Percent</i> 0.9	<i>1,000 Head</i> 81	<i>1,000 Head</i> 32	<i>1,000 Head</i> 2	<i>1,000 Head</i> 106	<i>Number</i> 8	<i>Number</i> 2

¹ Based on records for the past 10 October-December quarters.

ACCESS TO REPORTS!!

For your convenience, there are several ways to obtain NASS reports, data products, and services:

INTERNET ACCESS

All NASS reports are available free of charge on the worldwide Internet. For access, connect to the Internet and go to the NASS Home Page at: www.usda.gov/nass/. Select "Today's Reports" or Publications and then Reports Calendar or Publications and then Search, by Title or Subject.

E-MAIL SUBSCRIPTION

All NASS reports are available by subscription free of charge direct to your e-mail address. Starting with the NASS Home Page at www.usda.gov/nass/, click on **Publications**, then click on the **Subscribe by E-mail** button which takes you to the page describing e-mail delivery of reports. Finally, click on **Go to the Subscription Page** and follow the instructions.

PRINTED REPORTS OR DATA PRODUCTS

CALL OUR TOLL-FREE ORDER DESK: 800-999-6779 (U.S. and Canada)
Other areas, please call 703-605-6220 FAX: 703-605-6900
(Visa, MasterCard, check, or money order acceptable for payment.)

ASSISTANCE

For **assistance** with general agricultural statistics or further information about NASS or its products or services, contact the **Agricultural Statistics Hotline** at **800-727-9540**, 7:30 a.m. to 4:00 p.m. ET, or e-mail: **nass@nass.usda.gov**.

The United States Department of Agriculture (USDA) prohibits discrimination in all its programs on the basis of race, color, national origin, gender, religion, age, disability, political beliefs, sexual orientation, and marital or family status. (Not all prohibited bases apply to all programs.) Persons with disabilities who require alternative means for communication of program information (braille, large print, audiotape, etc.) should contact the USDA's TARGET Center at 202-720-2600 (voice and TDD).

To file a complaint of discrimination, write USDA, Director, Office of Civil Rights, Room 326-W, Whitten Building, 1400 Independence Avenue, SW, Washington, D.C., 20250-9410, or call 202-720-5964 (voice or TDD). USDA is an equal opportunity provider and employer.